



**HAL**  
open science

## **Two-Dimensional Preparative Chromatography: Development of CPC x SFC for the isolation of high molecular weight compounds from biomass**

Magali Batteau, C. Lorentz, D. Laurenti, Karine Faure

### ► **To cite this version:**

Magali Batteau, C. Lorentz, D. Laurenti, Karine Faure. Two-Dimensional Preparative Chromatography: Development of CPC x SFC for the isolation of high molecular weight compounds from biomass. 13ème Congrès de l'Association Francophone des Sciences Séparatives (SEP 2019), Mar 2019, Paris, France. <hal-03749140>

**HAL Id: hal-03749140**

**<https://hal.science/hal-03749140v1>**

Submitted on 10 Aug 2022

**HAL** is a multi-disciplinary open access archive for the deposit and dissemination of scientific research documents, whether they are published or not. The documents may come from teaching and research institutions in France or abroad, or from public or private research centers.

L'archive ouverte pluridisciplinaire **HAL**, est destinée au dépôt et à la diffusion de documents scientifiques de niveau recherche, publiés ou non, émanant des établissements d'enseignement et de recherche français ou étrangers, des laboratoires publics ou privés.



HAL Authorization

# Two-Dimensional Preparative Chromatography: Development of CPC x SFC for the isolation of high molecular weight compounds from biomass

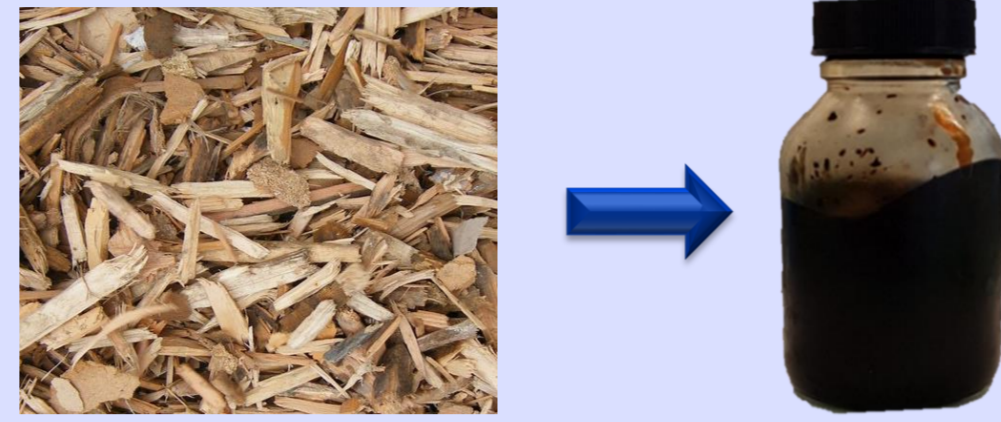
Magali Batteau<sup>1</sup>, Chantal Lorentz<sup>2</sup>, Dorothee Laurent<sup>2</sup>, Karine Faure<sup>1</sup>

<sup>(1)</sup> Institut des Sciences Analytiques, Université de Lyon, CNRS UMR 5280, 5 rue de la Doua – 69100 Villeurbanne, France

<sup>(2)</sup> IRCELYON, UMR5256 CNRS-UCBL, 2 Avenue A. Einstein, 69626 Villeurbanne Cedex, France

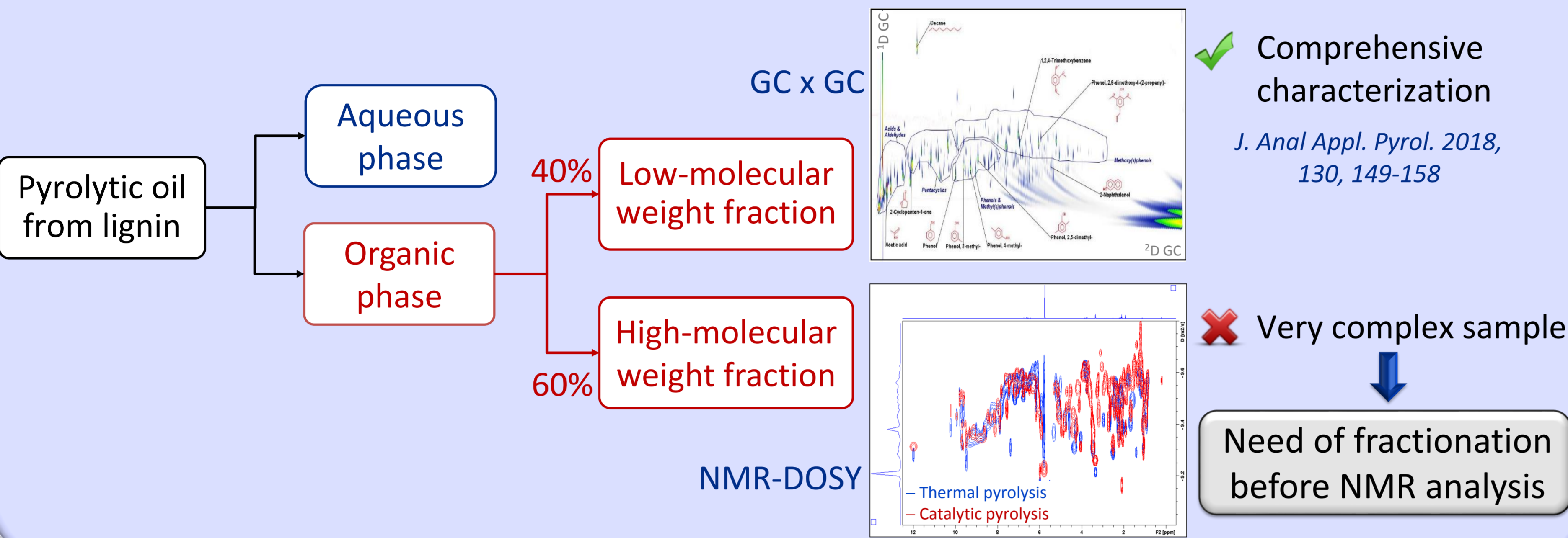
## Bio-oil from biomass as an alternative to fossil fuels:

- due to rarefaction of crude oil
- contributes to diversify energy sources
- reduces greenhouse gas emissions

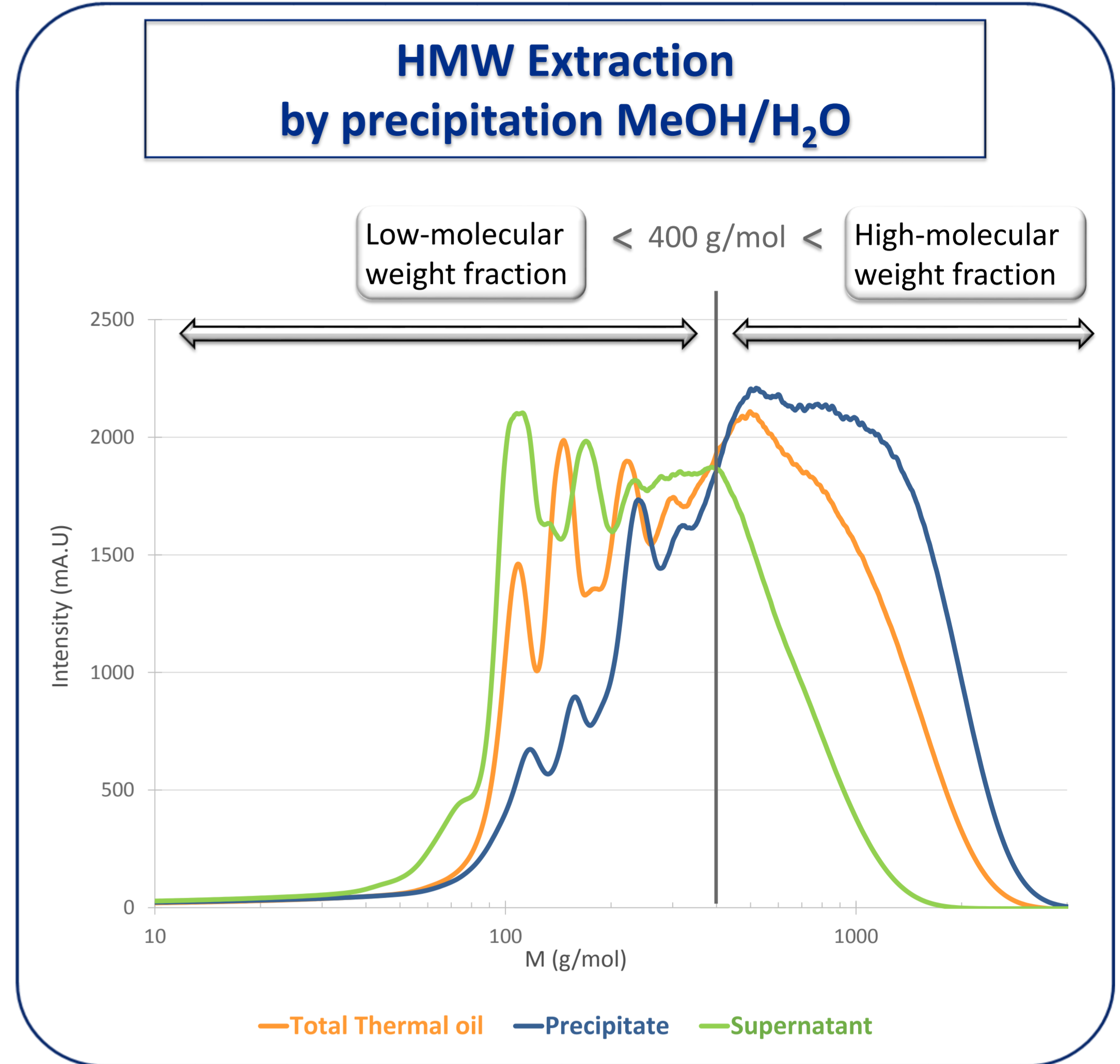


## Valorization of lignocellulose biomass from forestry industry waste into energetic bio-oil by hydroconversion process (conventional thermal pyrolysis or catalytic pyrolysis)

- to optimize the catalyst → need to identify which molecules are concerned by catalysis



## Sample Preparation

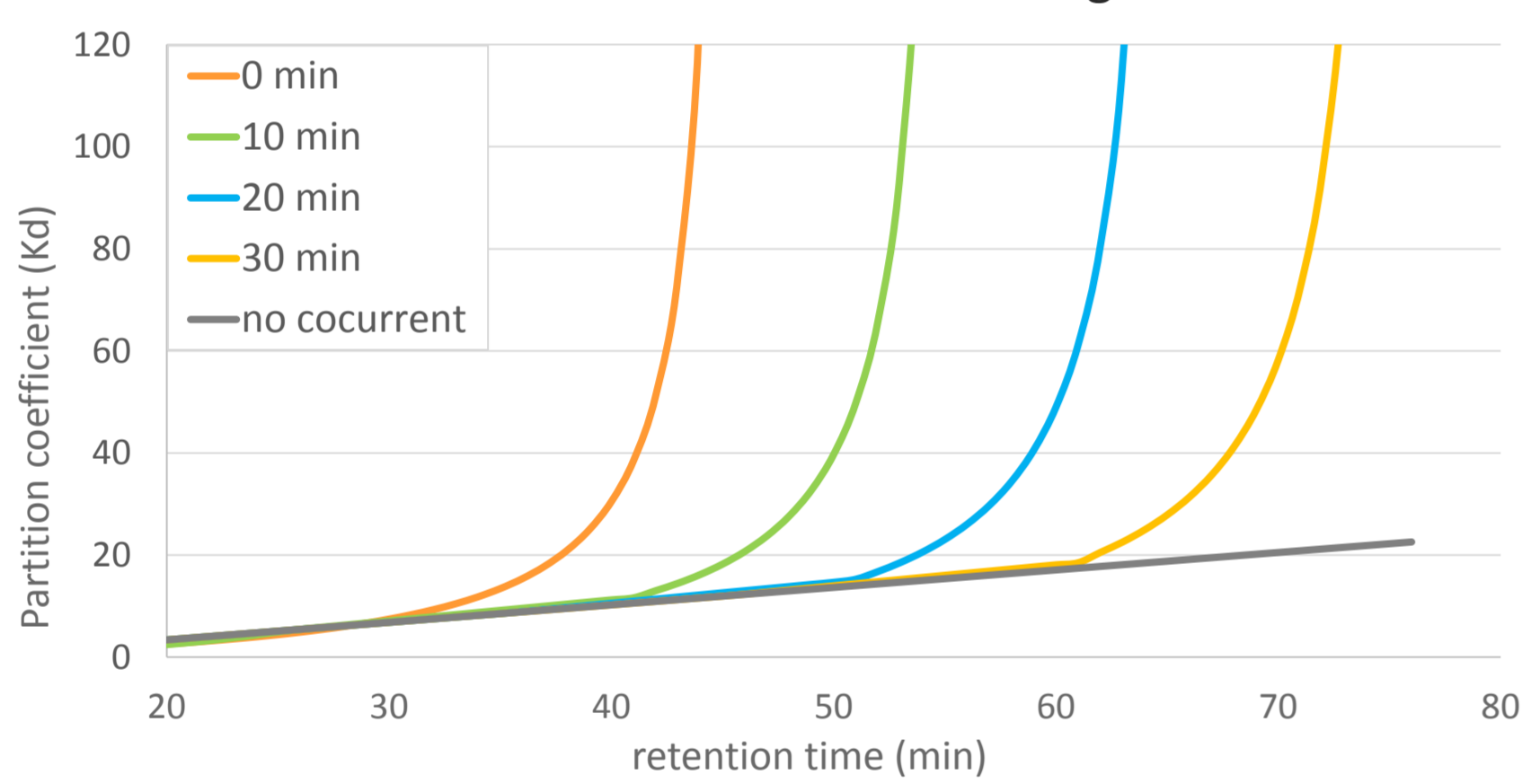


## Development of the preparative CPC x SFC method

### 1D: Centrifugal Partition Chromatography

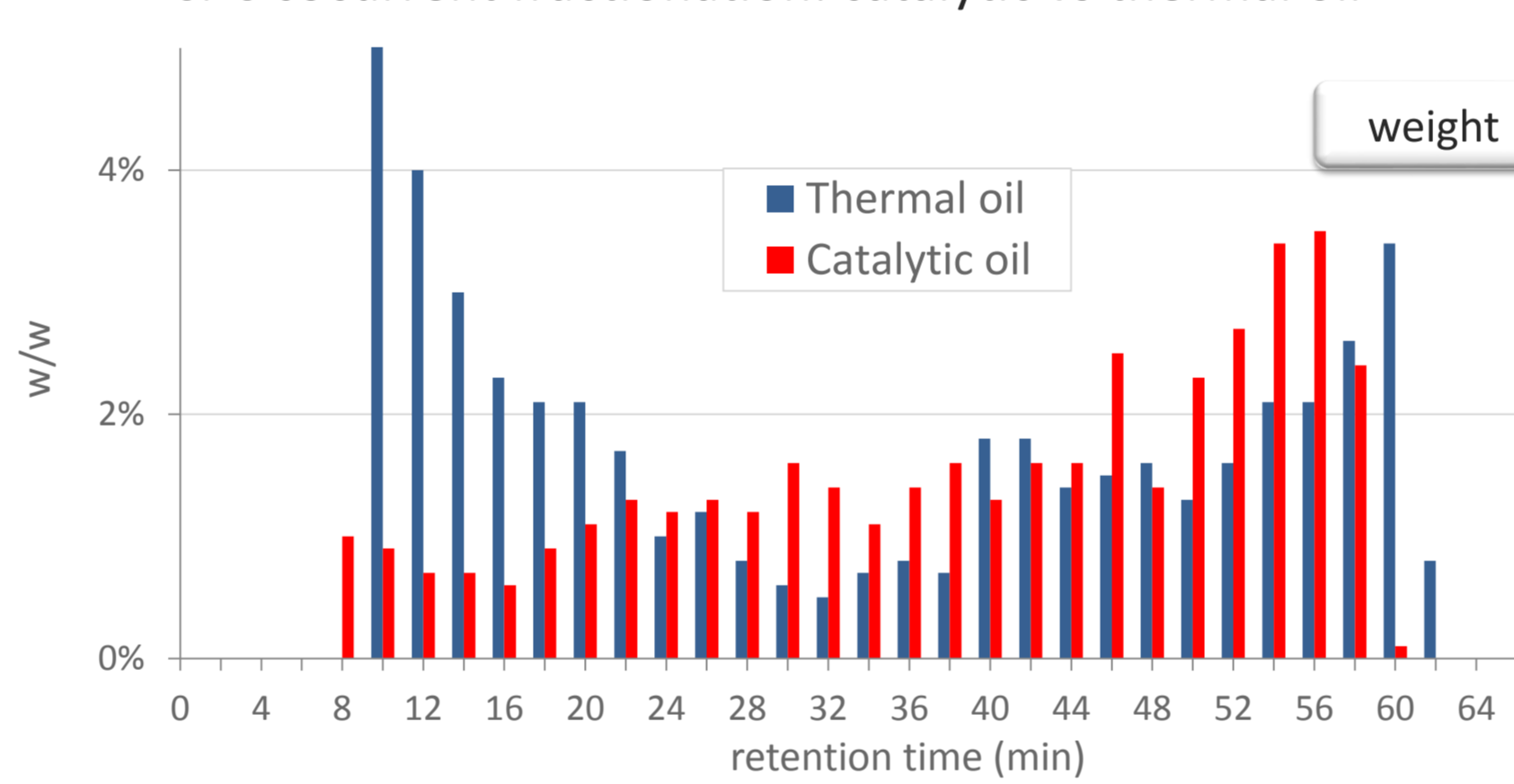
- **Very large retention range (K up to 200): "cocurrent elution" stationary phase gradient**
- The liquid stationary phase is slowly pushed forward to speed up the separation

Simulation of cocurrent elution: effect of  $\Phi_{stat}$  gradient start time



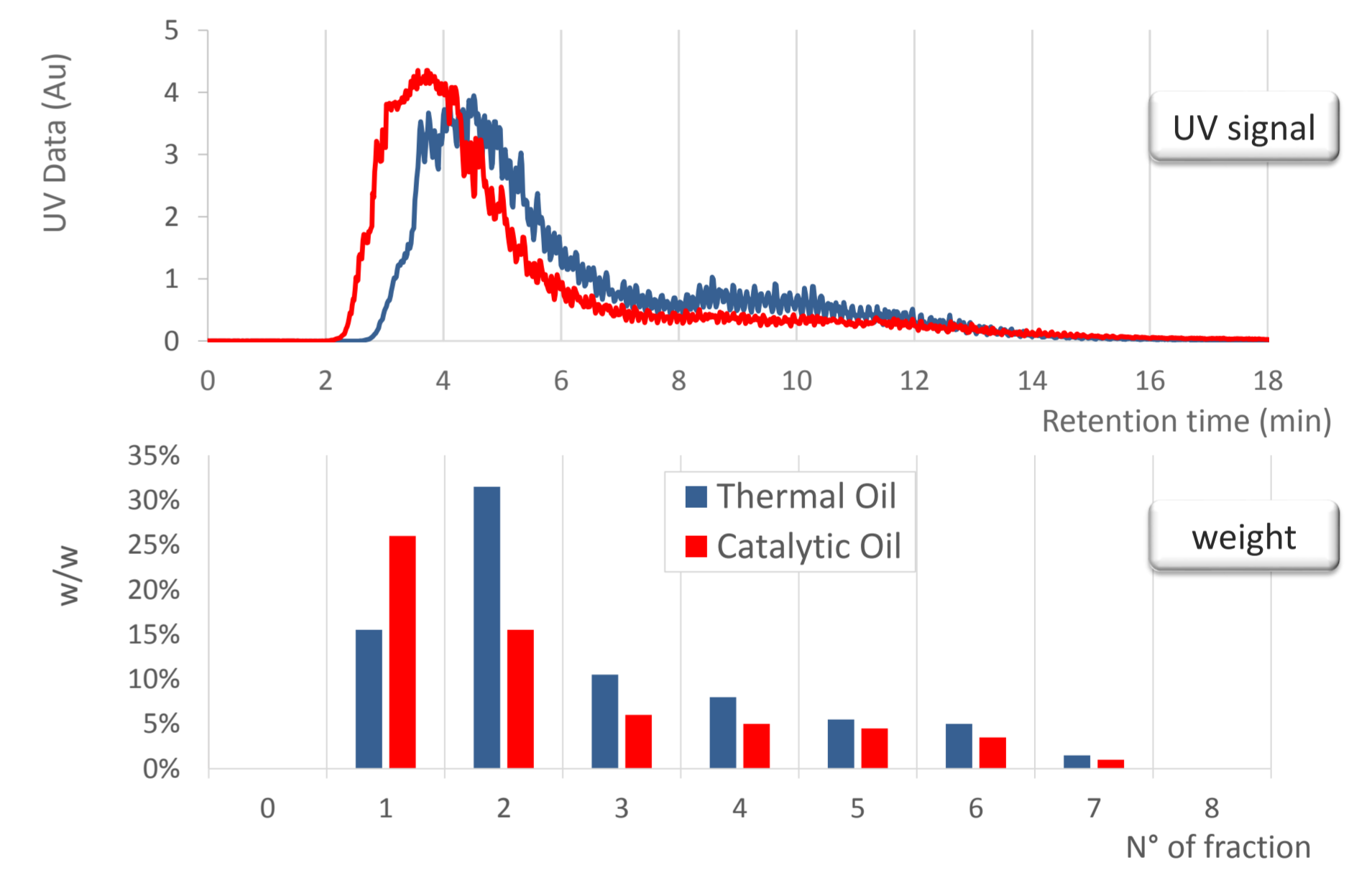
Vc 65.5 mL  
Cocurrent elution:  $\phi_{mob}$  5 mL/min;  $\phi_{stat}$  1 mL/min  
Gradient program: Vs initial 14.5 mL Vs final 30 mL

CPC cocurrent fractionation: catalytic vs thermal oil



SS: Toluene/Acetone/Water (descending mode)  
Cocurrent elution:  $\phi_{mob}$  5 mL/min +  $\phi_{stat}$  1 mL/min  
Start time = 20 min; Vinj = 1 mL (100 mg/mL) in  $\phi_{stat}$

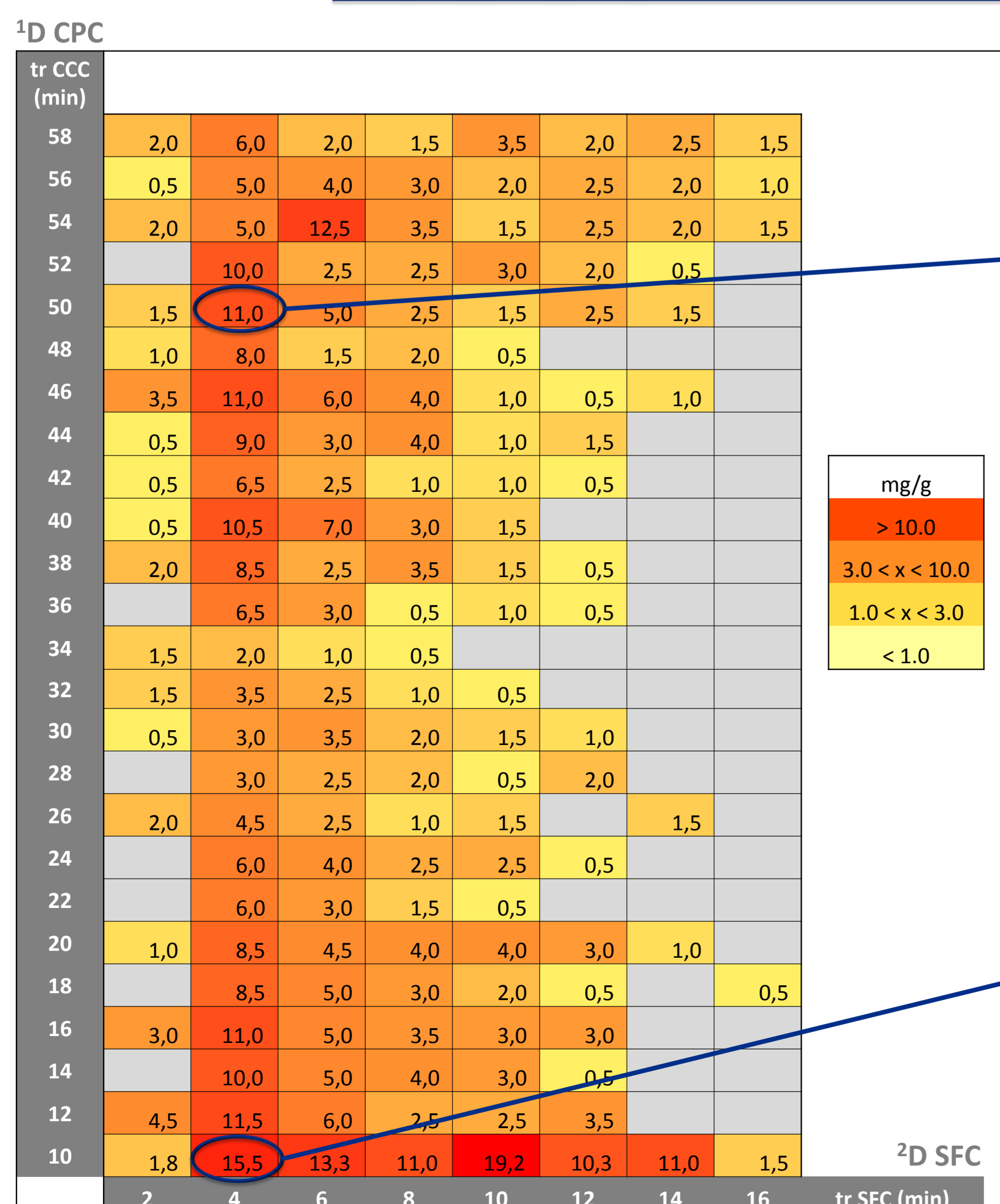
### 2D: SFCprep



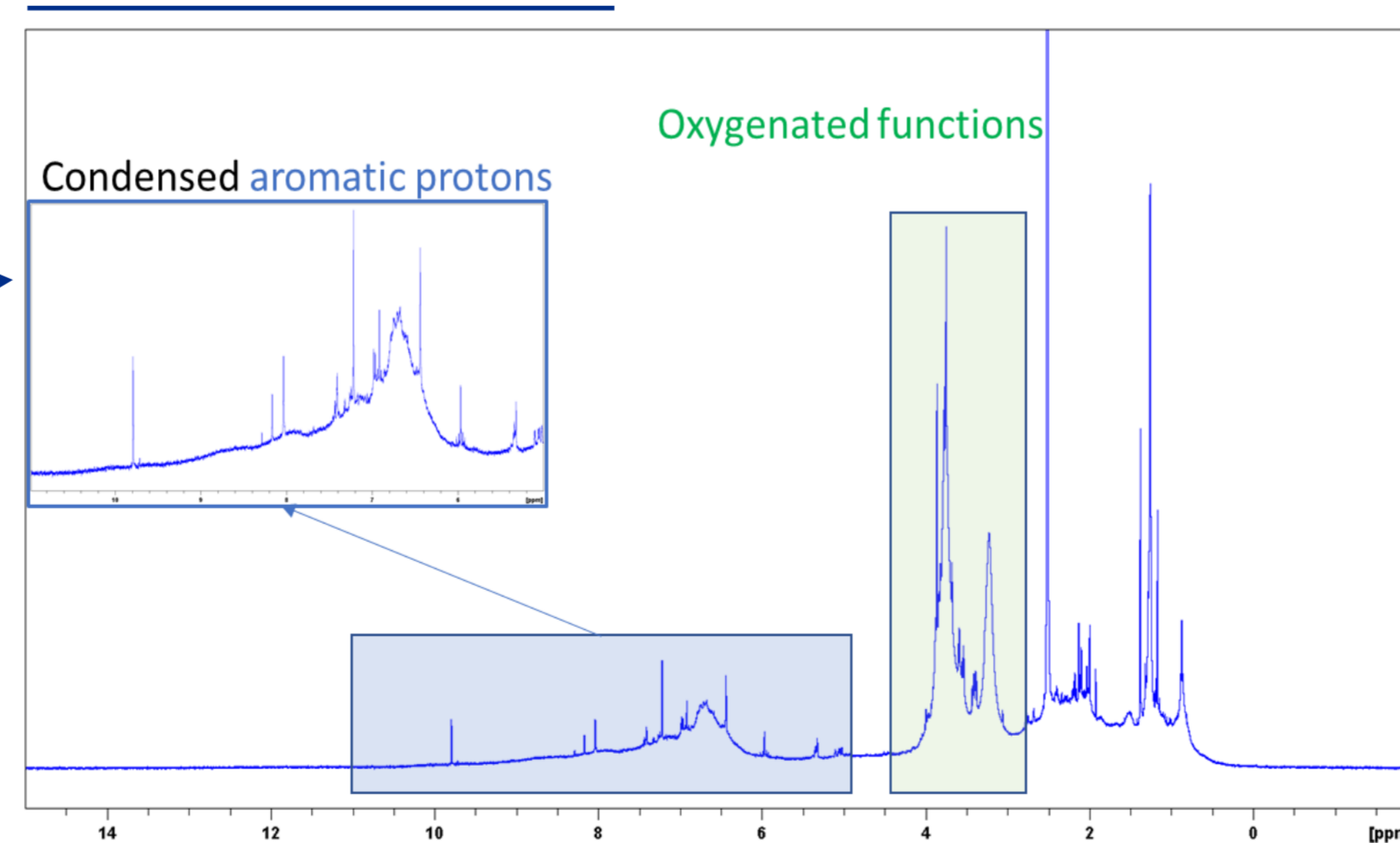
Zorbax silica column (150 x 4.6 mm, 5  $\mu$ m)  
Modifier: Methanol, make-up solvent: Acetonitrile  
Vinj = 100  $\mu$ L (50 mg/mL) in THF

## Isolation of high molecular weight compounds by CPC x SFC

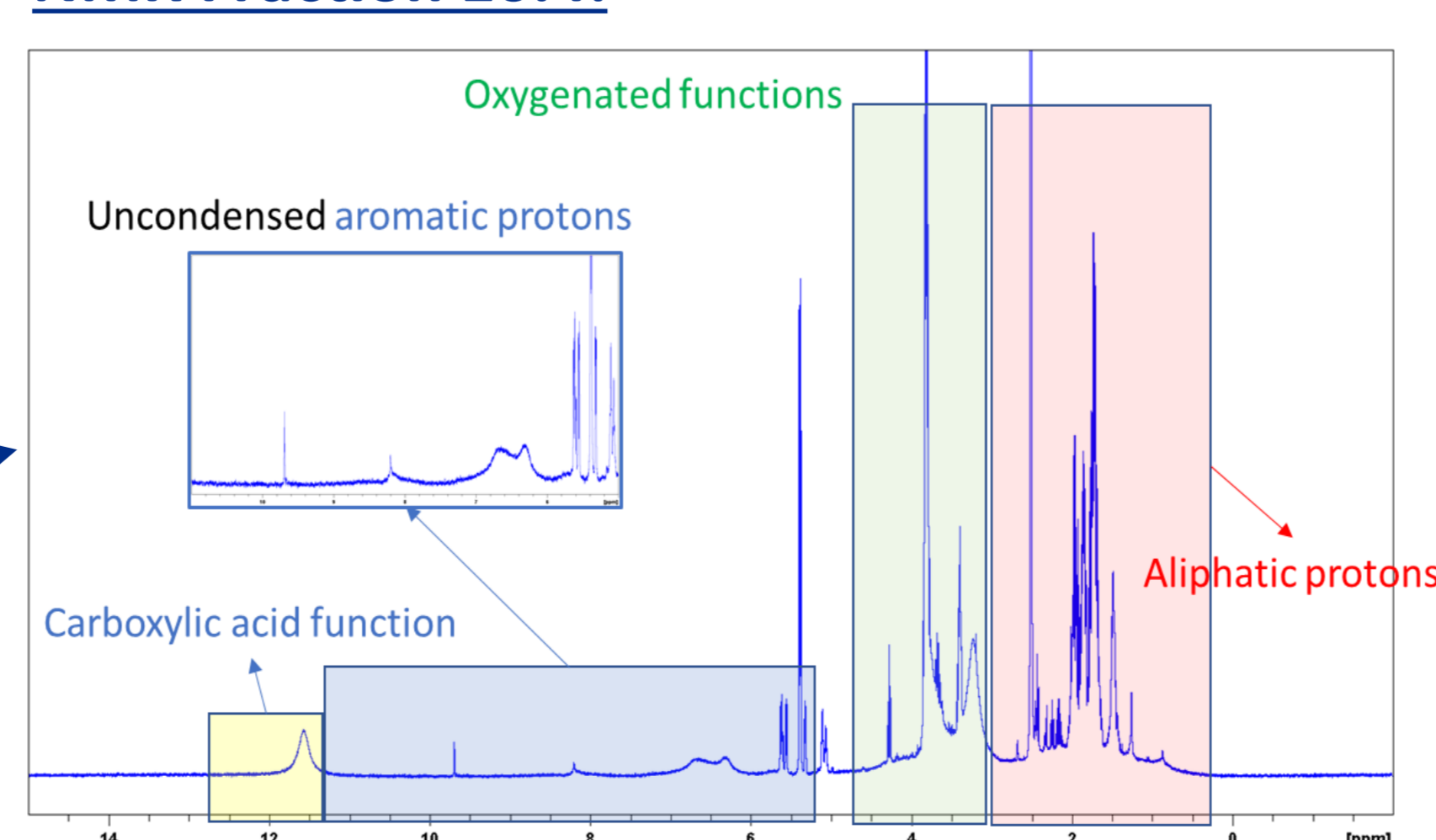
### Thermal oil fractionation by CPC x SFC – mass balance



#### NMR Fraction 50.4:



#### NMR Fraction 10.4:



### Conclusion

	1D: CPC retention	2D: SFC retention
Interactions	$\pi$ - $\pi$	OH
Thermal Oil	-	+
Catalytic Oil	+	-

- Catalytic pyrolysis is known to improve aromatic ring condensation and deoxygenation

### 2D Preparative CPC x SFC

- ✓ Large 2D occupation rate (75%)
- ✓ Production of mg-scale fractions
- ✓ Easier NMR identification

- These new tools can help in the characterization of bio-oils, to improve catalytic process and hence the valorization of biomass energy.