



Tissue-resident CD8 T cells in central nervous system inflammatory diseases: present at the crime scene and ...guilty

Doron Merkler, Ilena Vincenti, Frédérick Masson, Roland S Liblau

► To cite this version:

Doron Merkler, Ilena Vincenti, Frédérick Masson, Roland S Liblau. Tissue-resident CD8 T cells in central nervous system inflammatory diseases: present at the crime scene and ...guilty. *Current Opinion in Immunology*, 2022, 77, pp.102211. 10.1016/j.coi.2022.102211 . hal-03749081

HAL Id: hal-03749081

<https://hal.science/hal-03749081>

Submitted on 10 Aug 2022

HAL is a multi-disciplinary open access archive for the deposit and dissemination of scientific research documents, whether they are published or not. The documents may come from teaching and research institutions in France or abroad, or from public or private research centers.

L'archive ouverte pluridisciplinaire **HAL**, est destinée au dépôt et à la diffusion de documents scientifiques de niveau recherche, publiés ou non, émanant des établissements d'enseignement et de recherche français ou étrangers, des laboratoires publics ou privés.

Tissue-resident CD8 T cells in central nervous system inflammatory diseases: present at the crime scene and ...guilty

Doron Merkler^{1,2}, Ilana Vincenti¹, Frederick Masson³ and Roland S Liblau^{3,4}



Tissue-resident memory T cells (T_{RM}) represent a subset of antigen-experienced T cells that are constantly retained in a given tissue with limited trafficking through the circulation. These cells are characterized by expression of molecules enabling their tissue anchoring and downregulation of molecules promoting tissue egress. They reside at sites of previous antigen encounter and their number increases with age. T_{RM} have been shown to provide rapid and efficient protection against tissue reinfection and T_{RM} density correlates with efficient antitumor responses. Intriguingly, the density of CD8 T_{RM} is increased in the central nervous system (CNS) of patients with neuroinflammatory diseases such as multiple sclerosis, or suffering from neurodegenerative diseases. In this review, we discuss current knowledge regarding the diversity of CNS-resident CD8 T cells and their role in CNS autoimmunity. Given their likely contribution to the protracted course of several inflammatory diseases of the CNS, their therapeutic targeting becomes an important challenge.

Addresses

¹ Department of Pathology and Immunology, University of Geneva, Geneva, Switzerland

² Division of Clinical Pathology, Geneva University Hospital, 1211 Geneva, Switzerland

³ Toulouse Institute for infectious and inflammatory diseases (Infinity), University of Toulouse, CNRS, INSERM, UPS, 31024 Toulouse, France

⁴ Department of Immunology, Toulouse University Hospital, 31300 Toulouse, France

Corresponding author: Doron Merkler (doron.merkler@unige.ch)

Current Opinion in Immunology 2022, 77:102211

This review comes from a themed issue on **Special Section Neuroimmunology**

Edited by **Roland Liblau** and **Isaac Chiu**

For complete overview of the section, please refer to the article collection, "[Special Section Neuroimmunology \(June 2022\)](#)"

Available online 26th May 2022

<https://doi.org/10.1016/j.coi.2022.102211>

0952-7915/© 2022 The Authors. Published by Elsevier Ltd. This is an open access article under the CC BY-NC-ND license (<http://creativecommons.org/licenses/by-nc-nd/4.0/>).

Introduction

Memory T cells ensure a key role in immune surveillance and in protective immunity against reinfection and tumor control. Thereby, memory T cells represent a functionally heterogeneous pool of cells, which are classically segregated according to their patrolling routes within the body. Circulating-memory T cells consist of central-memory T cells (T_{CM}) and effector-memory T cells (T_{EM}) that patrol in the bloodstream, lymphoid organs, and, for T_{EM} , transiently in nonlymphoid organs. In contrast, tissue-resident memory T cells (T_{RM}), the focus of this review, are sessile in a wide range of non-lymphoid tissues, but may re-enter the bloodstream upon recall responses, revealing a recirculatory potential of T_{RM} progeny [1,2].

With regard to the central nervous system (CNS), T_{RM} are generated in mice following acute CNS infection with vesicular stomatitis virus [3] or lymphocytic choriomeningitis virus (rLCMV) [4]. Similarly, T_{RM} are found during persistent infection with murine polyomavirus (MuPyV) [5], murine cytomegalovirus [6], adenovirus [7], bacterial infection such as neuroinvasive *Listeria monocytogenes* [8], and the intracellular parasite *Toxoplasma gondii* [9]. In humans, the residence behavior of memory T cells is challenging to prove, particularly in the CNS. Thus, identification of T_{RM} often relies either on the detection of canonical T_{RM} markers, such as CD69, CD103, or CD49a [10], or on the analysis of their transcriptional signature [11•,12•]. Notably, whereas CD103 expression defines resident memory T cells in epithelial tissues, T_{RM} from the CNS comprise both CD103+ and CD103-subsets [13].

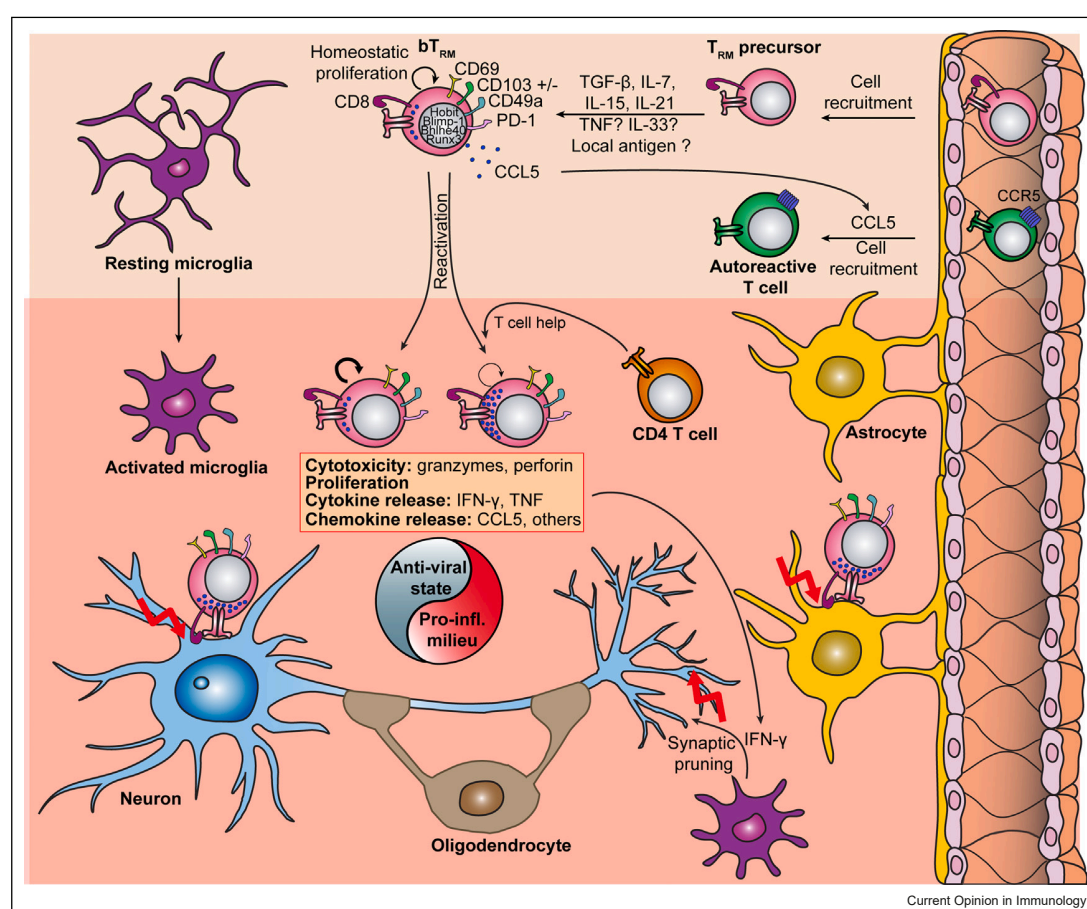
Beyond their role in protective immunity, recent studies suggest that T_{RM} are also implicated in organ-restricted chronic inflammatory diseases, some of which involve the CNS (Table 1). The role of T_{RM} in CNS autoimmune conditions as well as in neurodegenerative disorders only starts to be uncovered. Most of our understanding regarding T_{RM} establishment, maintenance, and function is derived from experimental model systems and focused on CD8 T_{RM} . Although less is known about CD4 T_{RM}

Table 1

Human chronic CNS diseases in which CD8 + T_{RM} were reported.

Chronic CNS diseases	T _{RM} phenotype	References
Multiple Sclerosis	CD8 + CD69 + CD103 + /-	[11•,39•,64•–66]
Neuromyelitis optica	CD8 + CD69 + CD103 + /-	[39•]
Paraneoplastic neurologic syndromes	CD8 + CD69 + CD103 + /-	[38•]
Rasmussen Encephalitis	CD8 + CD103 +	[67,68]
Alzheimer	CD8 + CD69 + CD103 + /-	[63]
Parkinson	CD8 + CD69 + CD103 + /-	[63,69•]
Dementia	CD8 + CD69 + CD103 + /-	[63]
Bipolar disorder	CD8 + CD69 + CD103 + /-	[63]

Figure 1



Schematic outline summarizing CD8 T_{RM} in CNS inflammation. T_{RM} precursor cells recruited within the CNS differentiate into brain T_{RM} (bT_{RM}) upon sensing of microenvironmental cues. The core signature of bT_{RM} includes expression of CD69, CD49a, PD-1, and transcription factors Hobit, Blimp-1, Bhlhe40, and Runx3. In addition, both CD103+ and CD103-bT_{RM} subsets exist. Resting bT_{RM} undergo homeostatic proliferation and constitutively produce the chemokine CCL5, attracting CCR5+ autoreactive T cells within the CNS. Upon bT_{RM} reactivation, the heterogeneous pool of bT_{RM} progeny consists of cells with a high proliferative capacity and cells with a high cytotoxic capacity. CD4 T-cell help is necessary for the acquisition of the highly cytotoxic program. Activated bT_{RM} release pro-inflammatory mediators such as IFN-γ and TNF, as well as chemokine such as CCL5. Altogether, bT_{RM} induce a damaging proinflammatory milieu that can be protective in case of a viral reinfection. bT_{RM}-derived IFN-γ induces synaptic pruning by activated microglia, leading to neuronal damage. Activated autoreactive bT_{RM} can directly attack astrocytes and neurons, and, possibly other cells such as oligodendrocytes.

within the CNS, new functions are emerging for this subset [14]. Here we review the current state of the field, emphasizing the origin of CD8 T_{RM}, their reactivation mechanisms, and how they can be implicated in chronic inflammatory diseases of the CNS.

Mechanism of tissue-resident memory T cells differentiation and maintenance in the central nervous system

T_{RM} preferentially arise from CD127–KLRG1– early effector cells [15–17]. T_{RM} commitment most likely occurs in inflamed tissues upon sensing of tissue-specific microenvironmental cues by precursor cells (Figure 1). Additionally, recent evidence suggests that early T_{RM} precursors are already skewed toward the T_{RM} fate in lymphoid organs [18,19].

TGF- β promotes T_{RM} differentiation by inducing CD103 upregulation and subsequent retention of CD103 + T_{RM} in epithelial tissues [20,21]. Interestingly, TGF- β is also critical for the development of CD103–T_{RM} of the lung [22,23]. During West Nile virus (WNV) infection of the brain, TGF- β production by regulatory T cells similarly induced CD103 upregulation on infiltrating CD8 T cells [24]. Recently, a study of human peripheral blood mononuclear cells (PBMC) suggested that hypoxia synergizes with TGF- β for CD103 induction [25]. CD103 expression has been shown to facilitate cell retention through the interaction with its ligand E-cadherin in epithelia. Despite the absence of E-cadherin expression in the brain parenchyma, expression of CD103 by brain T_{RM} was associated with an increased T_{RM} retention within the CNS tissue [13,26]. During experimental persistent viral infection of the brain, CD4 T-cell-derived IL-21 supports T_{RM} formation [27], while CD4 T-cell help is not required to clear virus from the brain after CNS acute LCMV infection [4]. Additional microenvironmental signals that presumably promote T_{RM} differentiation comprise IL-7, IL-15, TNF, and IL-33 [20,28–31] (Figure 1). Conflicting results have been reported regarding the requirement of local antigen encounter in the CNS for the development of T_{RM} [7,27,32]. Additionally, IL-1 β signaling seems to be required for migration of WNV-specific T cells across the blood–brain barrier (BBB) [33], but its role for T_{RM} differentiation remains to be addressed. Finally, costimulatory signals such as ICOS and CD28 can impact T_{RM} differentiation and functions [16,34].

T_{RM} display a distinct transcriptional signature [35,36] but also share some transcriptional overlap with T_{EM} and T_{CM} [37]. Notably, although sharing a common core signature, there is a phenotypical and a functional heterogeneity among T_{RM} from the brain [38,39], specifically regarding proliferative and effector capabilities.

The core transcriptional program defining T_{RM} comprises the expression of *Hobit*, *Blimp-1*, *Runx3*, and *Bhlhe40* [35,36,40] (Figure 1). Intriguingly, a polymorphism in the *Runx3* gene has been associated with risk to develop multiple sclerosis (MS) [41]. The restrictive environment of nonlymphoid tissues reduces metabolite availabilities. Therefore, T_{RM} have evolved a particular metabolic reprogramming that depends on exogenous free fatty acid uptake to survive [42], and have been shown to adapt their residency program to facilitate organ-specific fatty acid uptake [43]. The transcription factor Notch is required for T_{RM} survival in the lung [44], however, its requirement to establish T_{RM} in other tissues remains elusive. The hallmark of T_{RM} also comprises the downregulation of *Klf2*, *Slpr1*, and *Slpr5* [35,45], all involved in tissue egress. In addition, T_{RM} in murine CNS typically express PD-1 [6,13], the implication of which remains to be explored. The corresponding ligand, PD-L1, is expressed on astrocytes, microglia, and neurons upregulate PD-L1 expression following MuPyV infection in the CNS [46], suggesting a regulatory role of neural cells for T_{RM} activity. In line with this, *in vitro* experiments found that PD-L1 from glial cells induces upregulation of CD69 and CD103 on activated CD8 T cells [47].

Although considerable progress is being made in our understanding of the regulation of T_{RM} function and retention in the CNS, open questions remain to be addressed. In particular, it will be important to gain further knowledge regarding the local cellular source and the temporal regulation of the essential signals, leading to T-cell residence in the CNS.

Evidence for tissue-resident memory T cells in protective immunity of the central nervous system

The presence of T_{RM} in the CNS accelerates clearance of LCMV during acute reinfection and controls persistent infection [4,5,32]. T_{RM} are involved in protective immunity via several mechanisms. They rapidly express proinflammatory cytokines following pathogen encounter, exerting a sensing and alarming function that induces an ‘anti-viral state’ and that promotes the recruitment of immune cells to the infected tissue [48,49]. In addition, upon reactivation, T_{RM} rapidly expand in the CNS and give rise to effector cells [3,4]. These effector cells can clear virus in an interferon-gamma (IFN- γ) and perforin-dependent manner, even in the absence of circulating T cells or NK cells, showing that T_{RM} can serve as an autonomous immunological barrier against infection of the CNS [4]. While circulating-memory T cells are also sufficient to protect against fatal outcome following LCMV intracranial challenge [4], protective immunity during challenge with rabies virus is only achieved when resident memory T cells are pre-

established in the CNS [50,51]. This suggests that the need for T_{RM} in protective anti-infectious immunity may vary, depending on the infection context, ranging from being sufficient to necessary.

Beyond their protective function during infection, T_{RM} are also supposed to play a role in immune surveillance of cancer. Indeed, T_{RM} are found in human tumors [52–57] and tumor-specific T_{RM} surveying the skin prevent the development of melanoma cells into macroscopic lesions in a mouse model of cutaneous melanoma [58]. In the CNS, CD8 T cells with a T_{RM} phenotype have been found in gliomas [26,59], which showed TCR specificity against different virus epitopes, including influenza-A-, Epstein–Barr virus, and cytomegalovirus [60]. Accordingly, delivery of virus-derived peptides in a glioblastoma mouse model reactivated T_{RM} from explant tumors and improved survival [60]. Additionally, tumor-cell lysate vaccination in low-grade gliomas has been shown to elicit tumor-specific T cells with a T_{RM} phenotype in the tumor microenvironment [61]. The potential use of T_{RM} to target pathogens and malignant tumors in the CNS therefore appears to be a most appealing avenue of research for the coming years.

Tissue-resident memory T cells in chronic inflammatory disease of the central nervous system

Role of tissue-resident memory T cells in harmful response in the central nervous system

CD8 T cells with a T_{RM} phenotype are detected in the healthy and aging human brain [62,63]. Furthermore, due to the parenchymal localization of T_{RM} and their surveying attributes, it is tempting to speculate that they are involved in inflammatory disease affecting the CNS. In this regard, CD8 T cells expressing CD69 and/or CD103 are described in MS [11•,64•–66] and in neuromyelitis optica spectrum disorders [39•]. CD8 T cells expressing CD103 are also detected in brain-infiltrating lymphocytes from resected lesions of Rasmussen encephalitis (RE), a highly inflammatory disease of possible autoimmune etiology affecting mostly children, and in which neurons are likely the immunological targets of CD8 T cells [67,68].

Additionally, T_{RM} have been found in paraneoplastic neurological disorders [38•], as well as in neurodegenerative conditions such as Alzheimer's and Parkinson's diseases [63,69•,70]. The fact that T_{RM} are also found in neurodegenerative diseases raises the question how these cells may be involved in the pathogenesis of neurodegeneration. In Parkinson's disease, CD8 T_{RM} infiltration in the substantia nigra paralleled the progression of dopaminergic neuron death and was present already in early disease stages, even before

synucleinopathy was evident [69]. Likewise, clonally expanded CD4 T_{RM} secreting inflammatory mediators and stimulated with a phosphorylated α -synuclein epitope were found in patients suffering from Lewy body dementia and T_{RM} -like CD4 T cells could be detected in their CSF and postmortem substantia nigra [70]. Altogether, this suggests that T_{RM} may contribute or even foster disease evolution in such neurodegenerative diseases. Regardless of whether the disease is primarily considered as neuroinflammatory or neurodegenerative, T_{RM} -mediated tissue damage could happen in two principal ways, either in a bystander manner and/or via cognate antigen recognition.

With regard to a bystander involvement of T_{RM} in CNS autoimmune disease, it was shown that following transient LCMV infection in young mice, brain T_{RM} contributed to a proinflammatory tissue microenvironment in which their constitutive expression of the chemokine CCL5 facilitated the recruitment of circulating autoreactive T cells later in life [66] (Figure 1). Analogously to mice, CCL5 was also detected in the normal-appearing white matter of MS patients. Furthermore, it has been shown that T_{RM} expressed IFN- γ after flavivirus infection and drove synaptic pathology in a bystander manner via microglia activation [71•].

In experimental models of viral and autoimmune encephalitis, CNS-infiltrating effector CD8 T cells attack neurons in an antigen-dependent manner [38•,72] (Figure 1). With prolonged disease duration, such infiltrating CD8 T cells can become tissue-resident and progressively drive neuronal alterations and loss behind the BBB independently to their circulating counterparts [38•]. Furthermore, TCR β sequencing from RE brain resections identified sequence similarity between the CDR3 from the most abundant clonotypes with that of T-cell clones specific for two immunodominant human cytomegalovirus (HCMV) epitopes [73]. This finding suggests that autoreactive T cells in RE might be cross-reacting with HCMV epitopes. Since T_{RM} are described in RE [67,68], one might speculate that cross-reactive T_{RM} are implicated in RE disease pathology. Analogously, in a mouse model of CNS autoimmune disease, virus-specific T_{RM} that cross-react with a cognate neo-self-antigen in glial cells were reactivated and precipitated CNS disease in the absence of infection [39•] (Figure 1).

Furthermore, as brain T_{RM} accumulate following CNS pathogen infections, one could speculate that they could contribute to the aging process and cognitive decline through their intrinsic proinflammatory properties. Indeed, in experimental models of aging, T cells expressing T_{RM} marker (CD69) were found within old

neurogenic niche and contribute to loss of self-renewal through an IFN- γ -dependent mechanism [74]. T_{RM} from aged brains were likewise shown to promote inflammation following ischemic stroke [62].

These data suggest that T_{RM} can play an important role in the immunopathology of various chronic inflammatory processes of the CNS and, thereby, contribute to neurological decline.

Tissue-resident memory T cells cooperation with other immune cells in central nervous system inflammation

During persistent CNS infection with MuPyV and in a model of neuronal autoimmunity, CD8 T_{RM} require CD4 T-cell help to become independent from circulating cells for their maintenance [27,38•,75], revealing an essential role of CD4 T cells for CD8 T_{RM} homeostasis during chronic antigen exposure. Local reactivation of T_{RM} upon antigen encounter in the CNS results in the rapid recruitment of immune cells from the circulation and the vicinity, including CD8 T cells, CD4 T cells, B cells, and border-associated macrophages [39•].

Secretion of IFN- γ appears to be a major T_{RM} effector mechanism fostering the recruitment of various immune cells to the CNS, the local activation of microglial cells, and local interactions between neural cells such as neurons and glial cells and T cells and phagocytes. In the acute phase of brain MuPyV infection, microglial activation is mediated by CD8 T-cell-derived IFN- γ [46]. Similarly, IFN- γ from infiltrating CD8 T cells mediates microglial-dependent synaptic pruning during a mouse model of autoimmune encephalitis [72]. In a model of vaccine-induced autoimmune narcolepsy, lack of IFN- γ by autoimmune CD8 T cells prevents the loss of neurons and attenuates microglial activation [76]. Thus, T_{RM} and infiltrating leukocytes likely cooperate to sustain brain inflammation and inflict tissue damage.

T_{RM} reactivation in the lungs does not depend on conventional antigen-presenting cells, by contrast to circulating-memory cells [77]. Likewise, in a murine CNS autoimmune model, T_{RM} are reactivated by antigen-expressing glial cells [39•]. In this model, functional reactivation of CD8 T_{RM} requires the help of recruited CD4 T cells. Unhelped T_{RM} showed an altered transcriptional signature characterized by increased *Tcf7* expression and reduced expression of cytotoxic genes (Figure 1), which was associated with reduced T_{RM} killing ability and prevented disease onset. Similarly, in a model of neuron-targeted autoimmune disease, help provided locally by CD4 T cells sustains the expression of cytotoxic molecules by T_{RM} [38•].

Thus, it is becoming evident that CD8 T_{RM} communicate with other immune and nonimmune cells within

the CNS microenvironment. In particular, CD4 T cells play critical supporting roles for T_{RM} function.

Future perspectives and therapeutic implications

Besides their beneficial role in the protection against neurotropic pathogens and tumors, it is now clear that T_{RM} have the potential to play a deleterious role in human chronic CNS inflammatory or neurodegenerative diseases, ranging from MS, paraneoplastic neurological disorders to Alzheimer's and Parkinson's diseases, and are likely involved in the process of brain aging. T_{RM} drive a compartmentalized immune response in the CNS, leading to pathology that can operate autonomously behind the BBB in the absence of contributions of the circulating CD8 T-cell pool. The role played by local T_{RM} activation, regardless of its mechanisms, in the waxing and waning presentation of some chronic inflammatory diseases of the CNS, remains to be evaluated.

Importantly, high-throughput transcriptomic analyses have revealed the existence of a tissue-residency program enabling T_{RM} to survive in nonlymphoid tissues by rewiring their metabolic program, effector functions, and adhesion-molecule patterns. More studies are therefore necessary to take advantage of this unique tissue-residency program to uncover potential vulnerabilities specific to CNS T_{RM} . This will require improving our understanding of the signals required for their differentiation, long-term maintenance, and positioning within the CNS tissue, as well as unraveling the cellular niche promoting their survival and their interactions with other partners such as CD4 T cells and microglial cells.

The identification of a pathogenic contribution for T_{RM} cells in chronic inflammatory diseases of the CNS, and possibly in neurodegenerative diseases [38•,39•], raises several key questions related to their ontogeny, their regulation, their interactions with other cell types within the CNS, and, ultimately, their therapeutic targeting.

Indeed, while current treatment options in CNS inflammatory diseases rely on the use of systemic immunosuppressors or molecules blocking T-cell migration to the CNS (such as Fingolimod and Natalizumab), there is an urgent need to consider T_{RM} as a key cellular target at the nexus of many chronic CNS inflammatory diseases. The development of therapies targeting T_{RM} is, however, facing multiple challenges. First, T_{RM} act behind a selective BBB potentially restricting access to drugs delivered in the bloodstream, and as T_{RM} can be deeply embedded within the brain parenchyma, this could also reduce drug accessibility. Second, future pharmacological approaches would need to target

specifically pathogenic T_{RM} cells while sparing the circulating T-cell compartment, including potentially beneficial T cells such as regulatory T cells.

Two non-mutually exclusive approaches to target T_{RM} are (i) to interfere with their differentiation or migration to the tissue, and (ii) to inhibit their survival or functions within the CNS. With regard to the first approach, understanding the molecular mechanisms underpinning the differentiation of effector CD8 T cells into T_{RM} or their precursors in the periphery and/or in the CNS would be required to manipulate this cell type [78]. In that respect, recent studies related to the identification of T_{RM} precursors, based on the expression of the *Hobit* transcription factor, provide valuable information on the developmental pathway and markers of early T_{RM} cells [19].

However, at the time of diagnosis, it is likely that a population of T_{RM} has already seeded the CNS and targeting T_{RM} within the CNS would probably be essential. The identification of molecular features unique to CNS T_{RM}, and of the signals and niches that allow their survival and long-term retention within the CNS, should reveal potential therapeutic targets.

Several targets can already be envisioned, such as HOBIT, CD69, and CD103 (T_{RM}-enriched molecules), cytokines supporting T_{RM} survival (IL-21, IL-15), and tissue-retention (TGF- β), or key T_{RM}-derived inflammatory mediators (such as IFN- γ and CCL5). However, a difficult challenge is to inhibit/neutralize these targets locally, in the CNS, without affecting their expression systemically. Administration of antisense RNA or blocking/neutralizing antibodies through the CSF could be an option. Strategies combining the prevention of effector T-cell homing to the CNS (such as S1P-receptor functional antagonists or anti- α 4 integrin mAb) with inhibition of their CNS residence seem reasonable to act both on the source and the existing pool of pathogenic T_{RM}.

As always, targeting specific immune pathways or cells is a trade-off, as it may lessen protection against infection and cancer [52,79].

Conflict of interest statement

The authors declare that they have no known competing financial interests or personal relationships that could have appeared to influence the work reported in this paper.

Acknowledgements

The work of the authors is supported by Grants from Agence Nationale pour la Recherche CE17-0014, ERA-Net Narcomics, Fondation pour l'Aide à la Recherche sur la Sclérose en Plaques (ARSEP)-French MS society, and Biomarkers in autoimmune Encephalitis and Paraneoplastic neurological

Syndromes Recherche Hospitalo-Universitaire (BETPSY RHU) RHU-18-0012 the Inspire Geroscience project (to RSL), and from the Swiss National Science Foundation 310030B_201271 & 310030_185321, and European Research Council (ERC) 865026 (to DM).

References and recommended reading

Papers of particular interest, published within the period of review, have been highlighted as:

- of special interest
- of outstanding interest

1. Behr FM, Parga-Vidal L, Kragten NAM, van Dam TJP, Wesselink TH, Sheridan BS, Arens R, van Lier RAW, Stark R, van Gisbergen K: **Tissue-resident memory CD8(+) T cells shape local and systemic secondary T cell responses.** *Nat Immunol* 2020, **21**:1070-1081.
2. Beura LK, Wijeyesinghe S, Thompson EA, Macchietto MG, Rosato PC, Pierson MJ, Schenkel JM, Mitchell JS, Vezys V, Fife BT, et al.: **T cells in nonlymphoid tissues give rise to lymph-node-resident memory T cells.** *Immunity* 2018, **48**:327-338 e325.
3. Wakim LM, Woodward-Davis A, Bevan MJ: **Memory T cells persisting within the brain after local infection show functional adaptations to their tissue of residence.** *Proc Natl Acad Sci USA* 2010, **107**:17872-17879.
4. Steinbach K, Vincenti I, Kreutzfeldt M, Page N, Muschawekch A, Wagner I, Drexler I, Pinschewer D, Korn T, Merkler D: **Brain-resident memory T cells represent an autonomous cytotoxic barrier to viral infection.** *J Exp Med* 2016, **213**:1571-1587.
5. Frost EL, Kersh AE, Evavold BD, Lukacher AE: **Cutting edge: resident memory CD8 T cells express high-affinity TCRs.** *J Immunol* 2015, **195**:3520-3524.
6. Prasad S, Hu S, Sheng WS, Chauhan P, Singh A, Lokensgard JR: **The PD-1: PD-L1 pathway promotes development of brain-resident memory T cells following acute viral encephalitis.** *J Neuroinflamm* 2017, **14**:82.
7. Scholler AS, Fonnes M, Nazera L, Christensen JP, Thomsen AR: **Local antigen encounter is essential for establishing persistent CD8(+) T-cell memory in the CNS.** *Front Immunol* 2019, **10**:351.
8. Cassidy BR, Zhang M, Sonntag WE, Drevets DA: **Neuroinvasive Listeria monocytogenes infection triggers accumulation of brain CD8(+) tissue-resident memory T cells in a miR-155-dependent fashion.** *J Neuroinflamm* 2020, **17**:259.
9. Landrith TA, Sureshchandra S, Rivera A, Jang JC, Rais M, Nair MG, Messaoudi I, Wilson EH: **CD103(+) CD8 T cells in the toxoplasma-infected brain exhibit a tissue-resident memory transcriptional profile.** *Front Immunol* 2017, **8**:335.
10. Mackay LK, Braun A, Macleod BL, Collins N, Tebartz C, Bedoui S, Carbone FR, Gebhardt T: **Cutting edge: CD69 interference with sphingosine-1-phosphate receptor function regulates peripheral T cell retention.** *J Immunol* 2015, **194**:2059-2063.
11. Beltran E, Gerdes LA, Hansen J, Flierl-Hecht A, Krebs S, Blum H, Ertl-Wagner B, Barkhof F, Kumpfel T, Hohfeld R, et al.: **Early adaptive immune activation detected in monozygotic twins with prodromal multiple sclerosis.** *J Clin Invest* 2019, **129**:4758-4768.
- This study analyzed CD8 T cells in the CSF of MS-discordant monozygotic twin pairs and identifies clonally expanded CD8 T cells with an activated TRM phenotype in the CSF of non-diseased twin siblings with subclinical neuroinflammation; a finding which was even more pronounced in patients with definite MS.
12. Pappalardo JL, Zhang L, Pecsok MK, Perlman K, Zografou C, Raddassi K, Abulaban A, Krishnaswamy S, Antel J, van Dijk D, et al.: **Transcriptomic and clonal characterization of T cells in the human central nervous system.** *Sci Immunol* 2020, **5**:eabb8786.
- This work identifies that a subset of T cells in the CSF of healthy donor has a TRM signature. TRM are also detected in the CSF of MS patients and express a more activated and a more cytotoxic signature compared to TRM from the CSF of healthy human donors.
13. Wakim LM, Woodward-Davis A, Liu R, Hu Y, Villadamos J, Smyth G, Bevan MJ: **The molecular signature of tissue resident memory CD8 T cells isolated from the brain.** *J Immunol* 2012, **189**:3462-3471.
14. Pasciuto E, Burton OT, Roca CP, Lagou V, Rajan WD, Theys T, Mancuso R, Tito RY, Kouser L, Callaerts-Vegh Z, et al.: **Microglia require CD4 T**

- cells to complete the fetal-to-adult transition. *Cell* 2020, **182**:625-640 e624.
15. Gaide O, Emerson RO, Jiang X, Gulati N, Nizza S, Desmarais C, Robins H, Krueger JG, Clark RA, Kupper TS: **Common clonal origin of central and resident memory T cells following skin immunization.** *Nat Med* 2015, **21**:647-653.
 16. Kurd NS, He Z, Louis TL, Milner JJ, Omilusik KD, Jin W, Tsai MS, Widjaja CE, Kanbar JN, Olvera JG, et al.: **Early precursors and molecular determinants of tissue-resident memory CD8(+) T lymphocytes revealed by single-cell RNA sequencing.** *Sci Immunol* 2020, **5**:eaa6894.
 17. Herndler-Brandstetter D, Ishigame H, Shinnakasu R, Plajer V, Stecher C, Zhao J, Lietzenmayer M, Kroehling L, Takumi A, Kometani K, et al.: **KLRG1(+) Effector CD8(+) T cells lose KLRG1, differentiate into all memory T cell lineages, and convey enhanced protective immunity.** *Immunity* 2018, **48**:716-729 e718.
 18. Kok L, Dijkgraaf FE, Urbanus J, Bresser K, Vredevoogd DW, Cardoso RF, Perie L, Beltman JB, Schumacher TN: **A committed tissue-resident memory T cell precursor within the circulating CD8+ effector T cell pool.** *J Exp Med* 2020, **217**:e20191711.
 19. Parga-Vidal L, Behr FM, Kragten NAM, Nota B, Wesselink TH, Kavazovic I, Covill LE, Schuller MBP, Bryceson YT, Wensveen FM, et al.: **Hobit identifies tissue-resident memory T cell precursors that are regulated by Eomes.** *Sci Immunol* 2021, **6**:eabg3533.
 20. Mackay LK, Rahimpour A, Ma JZ, Collins N, Stock AT, Hafon ML, Vega-Ramos J, Lauzurica P, Mueller SN, Stefanovic T, et al.: **The developmental pathway for CD103(+)CD8+ tissue-resident memory T cells of skin.** *Nat Immunol* 2013, **14**:1294-1301.
 21. Zhang N, Bevan MJ: **Transforming growth factor-beta signaling controls the formation and maintenance of gut-resident memory T cells by regulating migration and retention.** *Immunity* 2013, **39**:687-696.
 22. Goplen NP, Wu Y, Son YM, Li C, Wang Z, Cheon IS, Jiang L, Zhu B, Ayasoufi K, Chini EN, et al.: **Tissue-resident CD8(+) T cells drive age-associated chronic lung sequelae after viral pneumonia.** *Sci Immunol* 2020, **5**:eabc4557.
 23. Wang Z, Wang S, Goplen NP, Li C, Cheon IS, Dai Q, Huang S, Shan J, Ma C, Ye Z, et al.: **PD-1(hi) CD8(+) resident memory T cells balance immunity and fibrotic sequelae.** *Sci Immunol* 2019, **4**:eaaw1217.
 24. Graham JB, Da Costa A, Lund JM: **Regulatory T cells shape the resident memory T cell response to virus infection in the tissues.** *J Immunol* 2014, **192**:683-690.
 25. Hasan F, Chiu Y, Shaw RM, Wang J, Yee C: **Hypoxia acts as an environmental cue for the human tissue-resident memory T cell differentiation program.** *JCI Insight* 2021, **6**:e138970.
 26. Masson F, Calzascia T, Di Berardino-Besson W, de Tribolet N, Dietrich PY, Walker PR: **Brain microenvironment promotes the final functional maturation of tumor-specific effector CD8+ T cells.** *J Immunol* 2007, **179**:845-853.
 27. Ren HM, Kolawole EM, Ren M, Jin G, Netherby-Winslow CS, Wade Q, Shwetank, Rahman ZSM, Evavold BD, Lukacher AE: **IL-21 from high-affinity CD4 T cells drives differentiation of brain-resident CD8 T cells during persistent viral infection.** *Sci Immunol* 2020, **5**:eabb5590.
 28. Adachi T, Kobayashi T, Sugihara E, Yamada T, Ikuta K, Pittaluga S, Saya H, Amagai M, Nagao K: **Hair follicle-derived IL-7 and IL-15 mediate skin-resident memory T cell homeostasis and lymphoma.** *Nat Med* 2015, **21**:1272-1279.
 29. Mackay LK, Wynne-Jones E, Freestone D, Pellicci DG, Mielke LA, Newman DM, Braun A, Masson F, Kallies A, Belz GT, et al.: **T-box transcription factors combine with the cytokines TGF-beta and IL-15 to control tissue-resident memory T cell fate.** *Immunity* 2015, **43**:1101-1111.
 30. McLaren JE, Clement M, Marsden M, Miners KL, Llewellyn-Lacey S, Grant EJ, Rubina A, Gimeno Brias S, Gostick E, Stacey MA, et al.: **IL-33 augments virus-specific memory T cell inflation and potentiates the efficacy of an attenuated cytomegalovirus-based vaccine.** *J Immunol* 2019, **202**:943-955.
 31. Skon CN, Lee JY, Anderson KG, Masopust D, Hogquist KA, Jameson SC: **Transcriptional downregulation of S1pr1 is required for the establishment of resident memory CD8+ T cells.** *Nat Immunol* 2013, **14**:1285-1293.
 32. Urban SL, Jensen IJ, Shan Q, Pewe LL, Xue HH, Badovinac VP, Hartly JT: **Peripherally induced brain tissue-resident memory CD8(+) T cells mediate protection against CNS infection.** *Nat Immunol* 2020, **21**:938-949.
 33. Durrant DM, Daniels BP, Klein RS: **IL-1R1 signaling regulates CXCL12-mediated T cell localization and fate within the central nervous system during West Nile Virus encephalitis.** *J Immunol* 2014, **193**:4095-4106.
 34. Peng C, Huggins MA, Wanhainen KM, Knutson TP, Lu H, Georgiev H, Mittelsteadt KL, Jarjour NN, Wang H, Hogquist KA, et al.: **Engagement of the costimulatory molecule ICOS in tissues promotes establishment of CD8(+) tissue-resident memory T cells.** *Immunity* 2022, **55**:98-114 e115.
 35. Mackay LK, Minnich M, Kragten NA, Liao Y, Nota B, Seillet C, Zaid A, Man K, Preston S, Freestone D, et al.: **Hobit and Blimp1 instruct a universal transcriptional program of tissue residency in lymphocytes.** *Science* 2016, **352**:459-463.
 36. Milner JJ, Toma C, Yu B, Zhang K, Omilusik K, Phan AT, Wang D, Getzler S, Nguyen T, Crotty S, et al.: **Runx3 programs CD8(+) T cell residency in non-lymphoid tissues and tumours.** *Nature* 2017, **552**:253-257.
 37. Milner JJ, Toma C, He Z, Kurd NS, Nguyen QP, McDonald B, Quezada L, Widjaja CE, Witherden DA, Crowl JT, et al.: **Heterogenous populations of tissue-resident CD8(+) T cells are generated in response to infection and malignancy.** *Immunity* 2020, **52**:808-824 e807.
 38. Frieser D, Pignata A, Khajavi L, Shlesinger D, Gonzalez-Fierro C, Nguyen XH, Yermanos A, Merkler D, Höftberger R, Desestret V, Mair KM, Bauer J, Masson F, Liblau RS: **Tissue-resident CD8+ T cells drive compartmentalized and chronic autoimmune damage against CNS neurons.** *Science translational medicine* (640) 2022, **14**:eabl6157, , <https://doi.org/10.1126/scitranslmed.abl6157>.
- This work reveals that bT_{RM} can target self-expressing hypothalamic neurons and are essential drivers of chronic CNS autoimmunity. CD4 T cell help is necessary for bT_{RM}-mediated disease.
39. Vincenti I, Page N, Steinbach K, Yermanos A, Lemeille S, Nunez N, Kreutzfeldt M, Klimek B, Di Liberto G, Egervari K, Piccinno M, Shammass G, Mariotte A, Fonta N, Liaudet N, Shlesinger D, Luzzi AR, Wagner I, Saadi C, Stadelmann C, Merkler D: **Tissue-resident memory CD8+ T cells cooperate with CD4+ T cells to drive compartmentalized immunopathology in the CNS.** *Science translational medicine* (640) 2022, **14**:eabl6058, , <https://doi.org/10.1126/scitranslmed.abl6058>.
- This work identifies that bT_{RM} target neo-self-expressing astrocytes without the prerequisite for an infection and drive CNS autoimmune disease. Activated bT_{RM} require CD4 T cell help to become functionally cytotoxic and inflict tissue damage.
40. Li C, Zhu B, Son YM, Wang Z, Jiang L, Xiang M, Ye Z, Beckermann KE, Wu Y, Jenkins JW, et al.: **The transcription factor Bhlhe40 programs mitochondrial regulation of resident CD8(+) T cell fitness and functionality.** *Immunity* 2019, **51**:491-507 e497.
 41. International Multiple Sclerosis Genetics Consortium: **Multiple sclerosis genomic map implicates peripheral immune cells and microglia in susceptibility.** *Science* 2019, **365**:eaav7188.
 42. Pan Y, Tian T, Park CO, Lofftus SY, Mei S, Liu X, Luo C, O'Malley JT, Gehad A, Teague JE, et al.: **Survival of tissue-resident memory T cells requires exogenous lipid uptake and metabolism.** *Nature* 2017, **543**:252-256.
 43. Frizzell H, Fonseca R, Christo SN, Evrard M, Cruz-Gomez S, Zanluqui NG, von Scheidt B, Freestone D, Park SL, McWilliam HEG, et al.: **Organ-specific isoform selection of fatty acid-binding proteins in tissue-resident lymphocytes.** *Sci Immunol* 2020, **5**:eaay9283.
 44. Hombrink P, Helbig C, Backer RA, Piet B, Oja AE, Stark R, Brasser G, Jongejan A, Jonkers RE, Nota B, et al.: **Programs for the persistence, vigilance and control of human CD8(+) lung-resident memory T cells.** *Nat Immunol* 2016, **17**:1467-1478.
 - [45]. Evrard M, Wynne-Jones E, Peng C, Kato Y, Christo SN, Fonseca R, Park SL, Burn TN, Osman M, Devi S, et al.: **Sphingosine 1-phosphate receptor 5 (S1PR5) regulates the peripheral retention of tissue-resident lymphocytes.** *J Exp Med* 2022, **219**:e20210116.
 46. Shwetank, Frost EL, Mockus TE, Ren HM, Toprak M, Lauver MD, Netherby-Winslow CS, Jin G, Cosby JM, Evavold BD, et al.: **PD-1 dynamically regulates inflammation and development of brain-resident memory CD8 T cells during persistent viral encephalitis.** *Front Immunol* 2019, **10**:783.
 47. Prasad S, Hu S, Sheng WS, Chauhan P, Lokensgard JR: **Reactive glia promote development of CD103(+) CD69(+) CD8(+) T-cells through programmed cell death-ligand 1 (PD-L1).** *Immun Inflamm Dis* 2018, **6**:332-344.

48. Ariotti S, Hogenbirk MA, Dijkgraaf FE, Visser LL, Hoekstra ME, Song JY, Jacobs H, Haanen JB, Schumacher TN: **T cell memory. Skin-resident memory CD8(+) T cells trigger a state of tissue-wide pathogen alert.** *Science* 2014, **346**:101-105.
49. Schenkel JM, Fraser KA, Vezys V, Masopust D: **Sensing and alarm function of resident memory CD8(+) T cells.** *Nat Immunol* 2013, **14**:509-513.
50. Garcia SA, Lebrun A, Kean RB, Hooper DC: **Clearance of attenuated rabies virus from brain tissues is required for long-term protection against CNS challenge with a pathogenic variant.** *J Neurovirol* 2018, **24**:606-615.
51. Lebrun A, Kean RB, Hooper DC: **Brain tissue-resident immune memory cells are required for long-term protection against CNS infection with rabies virus.** *Future Virol* 2020, **15**:755-761.
52. Caushi JX, Zhang J, Ji Z, Vaghasia A, Zhang B, Hsueh EH, Mog BJ, Hou W, Justesen S, Blosser R, Hersey P, et al.: **Transcriptional programs of neoantigen-specific TIL in anti-PD-1-treated lung cancers.** *Nature* 2021, **596**:126-132.
53. Djenidi F, Adam J, Goubar A, Durgeau A, Maurice G, de Montpreville V, Validire P, Besse B, Mami-Chouaib F: **CD8+CD103+ tumor-infiltrating lymphocytes are tumor-specific tissue-resident memory T cells and a prognostic factor for survival in lung cancer patients.** *J Immunol* 2015, **194**:3475-3486.
54. Edwards J, Wilmott JS, Madore J, Gide TN, Quek C, Tasker A, Ferguson A, Chen J, Hewavisenti R, Hersey P, et al.: **CD103(+) tumor-resident CD8(+) T cells are associated with improved survival in immunotherapy-naïve melanoma patients and expand significantly during anti-PD-1 treatment.** *Clin Cancer Res* 2018, **24**:3036-3045.
55. Komdeur FL, Prins TM, van de Wall S, Plat A, Wisman GBA, Hollema H, Daemen T, Church DN, de Bruyn M, Nijman HW: **CD103+ tumor-infiltrating lymphocytes are tumor-reactive intraepithelial CD8+ T cells associated with prognostic benefit and therapy response in cervical cancer.** *Oncoimmunology* 2017, **6**:e1338230.
56. Wang B, Wu S, Zeng H, Liu Z, Dong W, He W, Chen X, Dong X, Zheng L, Lin T, et al.: **CD103+ tumor infiltrating lymphocytes predict a favorable prognosis in urothelial cell carcinoma of the bladder.** *J Urol* 2015, **194**:556-562.
57. Webb JR, Milne K, Watson P, Deleeuw RJ, Nelson BH: **Tumor-infiltrating lymphocytes expressing the tissue resident memory marker CD103 are associated with increased survival in high-grade serous ovarian cancer.** *Clin Cancer Res* 2014, **20**:434-444.
58. Park SL, Buzzai A, Rautela J, Hor JL, Hochheiser K, Efferm M, McBain N, Wagner T, Edwards J, McConville R, et al.: **Tissue-resident memory CD8(+) T cells promote melanoma-immune equilibrium in skin.** *Nature* 2019, **565**:366-371.
59. Vasquez JC, Huttner A, Zhang L, Marks A, Chan A, Baehring JM, Kahle KT, Dhodapkar KM: **SOX2 immunity and tissue resident memory in children and young adults with glioma.** *J Neurooncol* 2017, **134**:41-53.
60. Ning J, Gavil NV, Wu S, Wijeyesinghe S, Weyu E, Ma J, Li M, Grigore FN, Dhawan S, Skorput AGJ, et al.: **Functional virus-specific memory T cells survey glioblastoma.** *Cancer Immunol Immunother* 2022, <https://doi.org/10.1007/s00262-021-03125-w>
61. Ogino H, Taylor JW, Nejo T, Gibson D, Watchmaker PB, Okada K, Saijo A, Tedesco MR, Shai A, Wong CM, et al.: **Randomized trial of neoadjuvant vaccination with tumor-cell lysate induces T cell response in low-grade gliomas.** *J Clin Invest* 2022, **132**:e151239.
62. Ritzel RM, Crapser J, Patel AR, Verma R, Grenier JM, Chauhan A, Jellison ER, McCullough LD: **Age-associated resident memory CD8 T cells in the central nervous system are primed to potentiate inflammation after ischemic brain injury.** *J Immunol* 2016, **196**:3318-3330.
63. Smolders J, Heutink KM, Fransen NL, Remmerswaal EBM, Hombrink P, Ten Berge IJM, van Lier RAW, Huitinga I, Hamann J: **Tissue-resident memory T cells populate the human brain.** *Nat Commun* 2018, **9**:4593.
64. Fransen NL, Hsiao CC, van der Poel M, Engelenburg HJ, Verdaasdonk K, Vincenten MCJ, Remmerswaal EBM, Kuhlmann T, Mason MRJ, Hamann J, et al.: **Tissue-resident memory T cells invade the brain parenchyma in multiple sclerosis white matter lesions.** *Brain* 2020, **143**:1714-1730.
- This work describes CD8 with a T_{RM} phenotype in autopsy cases of MS. T_{RM} in MS normal-appearing white matter and MS lesions have a distinct phenotype.
65. Machado-Santos J, Saji E, Troscher AR, Paunovic M, Liblau R, Gabriely G, Bien CG, Bauer J, Lassmann H: **The compartmentalized inflammatory response in the multiple sclerosis brain is composed of tissue-resident CD8+ T lymphocytes and B cells.** *Brain* 2018, **141**:2066-2082.
66. Steinbach K, Vincenti I, Egervari K, Kreutzfeldt M, van der Meer F, Page N, Klimek B, Rossitto-Borlat I, Di Liberto G, Muschaweckh A, et al.: **Brain-resident memory T cells generated early in life predispose to autoimmune disease in mice.** *Sci Transl Med* 2019, **11**:eaav5519.
67. Owens GC, Chang JW, Huynh MN, Chirwa T, Vinters HV, Mathern GW: **Evidence for resident memory T cells in rasmussen encephalitis.** *Front Immunol* 2016, **7**:64.
68. Wiendl H, Gross CC, Bauer J, Merkler D, Prat A, Liblau R: **Fundamental mechanistic insights from rare but paradigmatic neuroimmunological diseases.** *Nat Rev Neurol* 2021, **17**:433-447.
69. Galiano-Landeira J, Torra A, Vila M, Bove J: **CD8 T cell nigral infiltration precedes synucleinopathy in early stages of Parkinson's disease.** *Brain* 2020, **143**:3717-3733.
- This study identifies CD8 T cells with a T_{RM} phenotype in Parkinson's disease. Those T_{RM} were identified even at early presymptomatic stages of disease.
70. Gate D, Tapp E, Leventhal O, Shahid M, Nonninger TJ, Yang AC, Strempl K, Unger MS, Fehlmann T, Oh H, et al.: **CD4(+) T cells contribute to neurodegeneration in Lewy body dementia.** *Science* 2021, **374**:868-874.
71. Garber C, Soung A, Vollmer LL, Kanmogne M, Last A, Brown J, Klein RS: **T cells promote microglia-mediated synaptic elimination and cognitive dysfunction during recovery from neuropathogenic flaviviruses.** *Nat Neurosci* 2019, **22**:1276-1288.
- This paper identifies that memory CD8 T cell-derived IFN- γ acts on hippocampal microglia to trigger synapse elimination following WNV or ZIKV recovery in mice, resulting in post-infectious cognitive sequelae.
72. Di Liberto G, Pantelyushin S, Kreutzfeldt M, Page N, Musardo S, Coras R, Steinbach K, Vincenti I, Klimek B, Lingner T, et al.: **Neurons under T cell attack coordinate phagocyte-mediated synaptic stripping.** *Cell* 2018, **175**:458-471 e419.
73. Chang JW, Reyes SD, Faure-Kumar E, Lam SK, Lawlor MW, Leventer RJ, Lew SM, Lockhart PJ, Pope K, Weiner HL, et al.: **Clonally focused public and private T cells in resected brain tissue from surgeries to treat children with intractable seizures.** *Front Immunol* 2021, **12**:664344.
74. Dulken BW, Buckley MT, Navarro Negredo P, Saligram N, Cayrol R, Leeman DS, George BM, Boutet SC, Hebestreit K, Pluvinau JV, et al.: **Single-cell analysis reveals T cell infiltration in old neurogenic niches.** *Nature* 2019, **571**:205-210.
75. Mockus TE, Shwetank, Lauver MD, Ren HM, Netherby CS, Salameh T, Kawasawa YI, Yue F, Broach JR, Lukacher AE: **CD4 T cells control development and maintenance of brain-resident CD8 T cells during polyomavirus infection.** *PLoS Pathog* 2018, **14**:e1007365.
76. Bernard-Valnet RFD, Nguyen X-H, Khajavi L, Quériault C, Arthaud S, Melzi S, Fusade-Boyer M, Masson F, Zytynicki M, Saoudi A, Dauvilliers Y, Peyron C, Bauer J, Liblau R: **Influenza vaccination induces autoimmunity against orexinergic neurons in a mouse model for narcolepsy.** *Brain* 2022,awab455.
77. Low JS, Farsakoglu Y, Amezcua Vesely MC, Sefik E, Kelly JB, Harman CCD, Jackson R, Shyer JA, Jiang X, Cauley LS, et al.: **Tissue-resident memory T cell reactivation by diverse antigen-presenting cells imparts distinct functional responses.** *J Exp Med* 2020, **217**:e20192291.
78. Kok L, Masopust D, Schumacher TN: **The precursors of CD8(+) tissue resident memory T cells: from lymphoid organs to infected tissues.** *Nat Rev Immunol* (5) 2022, **22**:283-293.
79. Mami-Chouaib F, Blanc C, Corgnac S, Hans S, Malenica I, Granier C, Thiy I, Tartour E: **Resident memory T cells, critical components in tumor immunology.** *J Immunother Cancer* 2018, **6**:87.