



**HAL**  
open science

## Description of new taxa in American Lamiinae (Coleoptera, Cerambycidae)

Sergio Devesa, Antonio Santos Silva

► **To cite this version:**

Sergio Devesa, Antonio Santos Silva. Description of new taxa in American Lamiinae (Coleoptera, Cerambycidae). *Faunitaxys*, 2022, 10 (41), pp.1-9. hal-03737322v2

**HAL Id: hal-03737322**

**<https://hal.science/hal-03737322v2>**

Submitted on 25 Aug 2022

**HAL** is a multi-disciplinary open access archive for the deposit and dissemination of scientific research documents, whether they are published or not. The documents may come from teaching and research institutions in France or abroad, or from public or private research centers.

L'archive ouverte pluridisciplinaire **HAL**, est destinée au dépôt et à la diffusion de documents scientifiques de niveau recherche, publiés ou non, émanant des établissements d'enseignement et de recherche français ou étrangers, des laboratoires publics ou privés.



Distributed under a Creative Commons Attribution - NonCommercial - NoDerivatives 4.0  
International License

# Faunitaxys

*Revue de Faunistique, Taxonomie et Systématique  
morphologique et moléculaire*



Volume 10  
Numéro 41

Juillet 2022

ISSN : 2269 - 6016  
Dépôt légal : Juillet 2022

# Faunitaxys

*Revue de Faunistique, Taxonomie et Systématique  
morphologique et moléculaire*

ZooBank : <http://zoobank.org/79A36B2E-F645-4F9A-AE2B-ED32CE6771CC>

Directeur de la publication, rédacteur, conception graphique et PAO:

*Lionel Delaunay*

Cette revue ne peut pas être vendue

Elle est distribuée par échange aux institutions (version papier)

et sur simple demande aux particuliers (format PDF)

à l'adresse suivante:

AFCFF (Association française de Cartographie de la Faune et de la Flore)

28, rue Voltaire, F- 42100 Saint Etienne

E-mail: [lionel.delaunay@free.fr](mailto:lionel.delaunay@free.fr)

Elle est disponible librement au téléchargement à partir du site:

<http://faunitaxys.fr/>

La parution de *Faunitaxys* est apériodique

*Faunitaxys* est indexé dans / *Faunitaxys* is indexed in:

- **Zoological Record**

Articles and nomenclatural novelties are referenced by:

- **ZooBank** (<http://zoobank.org>)

Online Archives:

- **HAL** (<https://hal.archives-ouvertes.fr>)

- **Internet Archive** (<https://archive.org>)

Imprimée sur les presses de SPEED COPIE, 6, rue Tréfilerie, F- 42100 Saint-Etienne

**Imprimé le 23 juillet 2022**



# Description of new taxa in American Lamiinae (Coleoptera, Cerambycidae)

SERGIO DEVESA (1) & ANTONIO SANTOS-SILVA (2)

(1) La Iglesia, 4, 36988 O Grove-San Vicente, Pontevedra, España.

- [sergio.devesa@gmail.com](mailto:sergio.devesa@gmail.com) - Orcid: <https://orcid.org/0000-0003-4159-4776>

- ZooBank: <http://zoobank.org/AD8E9FB4-1249-43B9-B4B3-B633721E4D39>

(2) Museu de Zoologia, Universidade de São Paulo, Avenida Nazaré # 481, 04263-000, São Paulo, SP, Brazil.

- [toncriss@uol.com.br](mailto:toncriss@uol.com.br) - Orcid: <https://orcid.org/0000-0001-7128-1418>

- ZooBank: <http://zoobank.org/726E502C-0712-4EB7-8737-63D881C96B39>

## Keywords:

Coleoptera;	<i>Colobothea</i> ;
Cerambycidae;	taxonomy;
Acanthocinini;	new species;
Colobotheini;	description;
Longhorned	morphology;
woodboring beetles;	Bolivia;
<i>Anisopodus</i> ;	Colombia;
<i>Lepturges</i> ;	Neotropical Region.

**Abstract.** – Three new species are described from the Neotropical Region: *Anisopodus leptos* sp. nov., from Bolivia (Acanthocinini); *Lepturges (Lepturges) caldensis* sp. nov., from Colombia (Acanthocinini); and *Colobothea vaamondei* sp. nov., from Colombia (Colobotheini).

Devesa S. & Santos-Silva A., 2022. – Description of new taxa in American Lamiinae (Coleoptera, Cerambycidae). *Faunitaxys*, 10(41): 1 – 9.

DOI: [https://doi.org/10.57800/faunitaxys-10\(41\)](https://doi.org/10.57800/faunitaxys-10(41))

ZooBank: <http://zoobank.org/A43499ED-C9E6-484D-A8C4-108CBEF7DA9F>

Received: 26/06/2022 – Revised: 15/07/2022 – Accepted: 18/07/2022

## Introduction

*Anisopodus* White, 1855 includes very different species whose unique feature is solely the length of their hind legs, but even so, there are exceptions. The genus includes species with or without humeral carina, with or without a lateral tubercle on the prothorax, and species with different elytral and prothoracic shapes. The new species described here does not agree very well with the type species of the genus, *A. arachnoides* Audinet-Serville, 1835 (Fig. 5), especially by the prothoracic shape, and elytral apex. However, we consider it mandatory to include the new species in *Anisopodus* until a detailed review of the genus is done. Currently, *Anisopodus* includes 46 species distributed from Mexico to southern South America (Monné 2022; Tavakilian & Chevillotte 2022). Monné (2022) does not include *A. jaculus* (Gyllenhal, 1817), transferred from *Lamia* Fabricius, 1775 to *Anisopodus* by Aurivillius (1923), a species originally described from “Isle de France” [Mauritius], and listed *A. varius* Melzer, 1935, a species synonymized with *Hyperplatys nigrisparsus* (Bates, 1885) by Nascimento *et al.* (2020).

*Lepturges (Lepturges)* Bates, 1863 is another problematic genus of Acanthocinini. Although the general appearance, especially that of the prothorax and prosternal process is very similar in nearly all species, there are aberrant species included in the genus. Typical species of this genus have the lateral tubercles of the prothorax practically adjacent to the posterolateral angles, however in some species, it is impossible to consider them as separated from the posterolateral angles. Additionally, there are species with the lateral tubercles of the prothorax distinctly separated from the posterolateral angles as, for example, in *L. (L.) peruviansis* Audureau, 2018. In the same way, the

prosternal process is very narrow in many species, often centrally laminiform, but there are species with a wider prosternal process as, for example in *L. (L.) proximus* Melzer, 1934. The new species described here is very similar to *L. (L.) navicularis* Bates, 1872 and *L. (L.) onorei* Santos-Silva, Nascimento, Botero & McClarin, 2021. These three species have the body stouter than in nearly all species of the genus. However, there are other species with a wider body as, for example, *L. (L.) beaveri* Monné, 1978, which has the lateral tubercles of the prothorax similar to most species of the genus, and a very narrow prosternal process. Although the new species described here has the prosternal process distinctly wide, the similarity in general appearance to *L. (L.) navicularis* and *L. (L.) onorei*, the presence of species with wide body shape, as well as the moderately wide prosternal process makes it difficult to describe a new genus to include it. Therefore, we are provisionally describing it in *Lepturges (Lepturges)*, until a full review of the genus can be provided. Currently, *Lepturges (Lepturges)* includes 79 species distributed from the United States of America to southern South America (Monné 2022; Tavakilian & Chevillotte 2022). Monné (2022) listed *L. (L.) soricinus* Fairmaire & Germain, 1859 in *Leiopus* Audinet-Serville, 1835, not following the transference to *Lepturges* by Gilmour (1965).

Currently, *Colobothea* Lepelletier & Audinet-Serville, 1825 includes 120 species distributed from Mexico to southern South America (Monné 2022; Tavakilian & Chevillotte 2022). This genus includes species with different prothoracic shapes (see photographs on Bezark 2022), which suggests that the species actually belong to at least two genera. The prothoracic shape in the new species described here agrees well with that of the type species, *Saperda cassandra* Dalman, 1823.

## Reviewer:

Larry G. Bezark (USA) - ZooBank: <http://zoobank.org/25C35904-2035-4416-9534-8641C1551196>



This is an open access article under the terms of the Creative Commons Attribution-NonCommercial-NoDerivs License, which permits use and distribution in any medium, provided the original work is properly cited, the use is non-commercial and no modifications or adaptations are made.

Copyright 2022 The Authors. *Faunitaxys* published by Lionel Delaunay on behalf of the AFCFF (Association française de Cartographie de la Faune et de la Flore).

## Material and Methods

Measurements were made using an ocular micrometer adapted to an Olympus SZX7 0.8–5.6X stereomicroscope; photographs were taken with a Canon EOS 5D Mark III DSLR camera equipped with a Canon MP-E 65mm f/2.8 1–5X macro lens, controlled by Cognisys Stackshot; photographs were stacked using Zerene Stacker AutoMontage software and processed with Capture One 21 software.

The acronyms used in the text are as follows:

– **MHNUSC**: Museo de Historia Natural de la Universidad de Santiago de Compostela, Spain.

– **SDPC**: Sergio Devesa Private Collection, Pontevedra, Spain.

## Results

### ACANTHOCININI Blanchard, 1845

#### *Anisopodus leptos* sp. nov.

(Fig. 1–4)

ZooBank: <http://zoobank.org/52CCAFF3-A8A9-4EBA-91F3-63D1070E9E15>

**Holotype**, ♂, BOLIVIA, *La Paz* (without further details): IX.1998, 1000 m.s.n.m., local collector (temporarily in SDPC, to be deposited in MHNUSC).

#### *Description of the holotype.*

**Coloration.** – Integument mostly dark brown; palpomeres dark yellowish brown; scape dark reddish brown, darker on apex; pedicel mostly brownish; antennomeres III–XI orangish brown, darkened apically. Prosternum with irregular dark reddish brown area centrally. Central area of mesoventrite and mesoventral process dark reddish brown; central area of metaventrite with irregular reddish brown areas. Elytra gradually brown toward apex. Pro- and mesocoxae mostly orangish brown; trochanters and femoral peduncles orangish brown; femoral peduncles mostly brown, darker on profemora. Tibiae reddish brown basally, gradually darkened toward apex, especially on apical quarter. Tarsomeres I dark reddish brown basally, blackish apically; tarsomeres II–V blackish. Abdominal ventrite 2–4 dark reddish brown apically; ventrite 3 with yellowish-brown maculae centrally near apex; ventrite 5 with irregular reddish-brown maculae, especially on posterior half.

**Head.** – Frons finely, abundantly punctate; with ochraceous pubescence almost obscuring integument, except glabrous region of median groove, and one long, erect dark brown seta on each side close to clypeus. Vertex finely punctate, except smooth area close to prothorax; with dense ochraceous pubescence obscuring integument, except glabrous area close to prothorax and area of median groove (this latter area diamond-shaped between antennal tubercles and upper eye lobes). Area behind eyes with ochraceous pubescence obscuring integument close to eye, pubescence narrowed toward area between eye lobes, widened, yellower toward ventral surface, glabrous close to prothorax. Genae with dense yellowish-brown pubescence, except glabrous apex. Wide central area of postclypeus with pubescence as on frons posteriorly, sparser, bristly close to anteclypeus; with one long, erect seta on each side, blackish basally, gradually yellowish toward apex. Labrum with sparse ochraceous pubescence, and long, erect setae interspersed on posterior half, setae blackish basally, gradually yellowish toward apex; anterior margin with fringe of yellowish setae. Gulamentum smooth, glabrous on wide posterior area, finely punctate, with sparse, moderately long, erect yellowish setae anteriorly. Distance between upper eye lobes 0.27 times distance between outer margins of eyes; in frontal view, distance between lower eye lobes 0.57 times distance between outer margins of eyes. Antennae 3.2 times elytral length, reaching elytral apex at basal sixth of antennomere VI.

Scape with abundant yellowish-white pubescence not obscuring integument, and a few short, erect, thick black setae ventrally near apex; pedicel with pubescence as on scape, and a few short, erect black setae on ventral surface of posterior half; antennomeres III–XI with sparse yellowish pubescence, slightly denser and bristly toward XI; antennomeres III–IV with a few short, erect black setae ventrally; antennomeres III–IX with short, erect black setae apically.

Antennal formula based on length of antennomere III:

– Scape = 1.55. – Pedicel = 0.09. – IV = 1.55. – V = 1.55. – VI = 1.45. – VII = 1.36. – VIII = 1.36. – IX = 1.36. – X = 1.36. – XI = 1.27.

**Thorax.** – Prothorax wider than long; sides gradually widened from anterolateral angles to near posterior third, slightly convergent from this point to lateral tubercles, then distinctly narrowed toward posterolateral angles; lateral tubercles located near posterolateral angles, with blunt apex not directed backward. Pronotum coarsely, abundantly punctate; with moderately large, circular brown pubescent spot on each side of anterior third, brownish pubescent macula on middle of lateral margins, yellow pubescent band on lateral margins close to lateral tubercle, mostly pale yellow pubescence on wide central area, and mostly yellowish-white pubescence on remaining surface; with a few long, erect blackish setae near lateral tubercle. Sides of prothorax coarsely, abundantly punctate; with grayish-white pubescence partially obscuring integument. Prosternum and prosternal process with grayish-white pubescence not obscuring integument; narrowest area of prosternal process 0.2 times procoxal width. Mesoventrite with short grayish-white pubescence distinctly not obscuring integument, almost absent on each side of antero-central region, longer, denser laterally; mesanepisternum and mesepimeron with dense white pubescence; metanepisternum and sides of metaventrite with dense yellowish-white pubescence; central area of metaventrite with minute, abundant yellowish-white pubescence not obscuring integument. Scutellum with dense grayish-white pubescence.

**Elytra.** – Somewhat coarsely, abundantly punctate, punctures gradually finer and sparser from middle, especially on posterior third; basal area with dense grayish-yellow pubescence; remaining surface most with dense grayish-white pubescence, not reaching epipleural margin and apex, longitudinally projected on sides before and after middle, with circular brownish pubescent spots interspersed, except large, irregular brownish pubescent macula on sides of central area, and another irregular spot (more irregular than the former) on posterior third, laterally fused with brownish pubescent apex; area of centrobasal crest slightly tumid; apex obliquely truncate, except straight narrow area close to sutural angle.

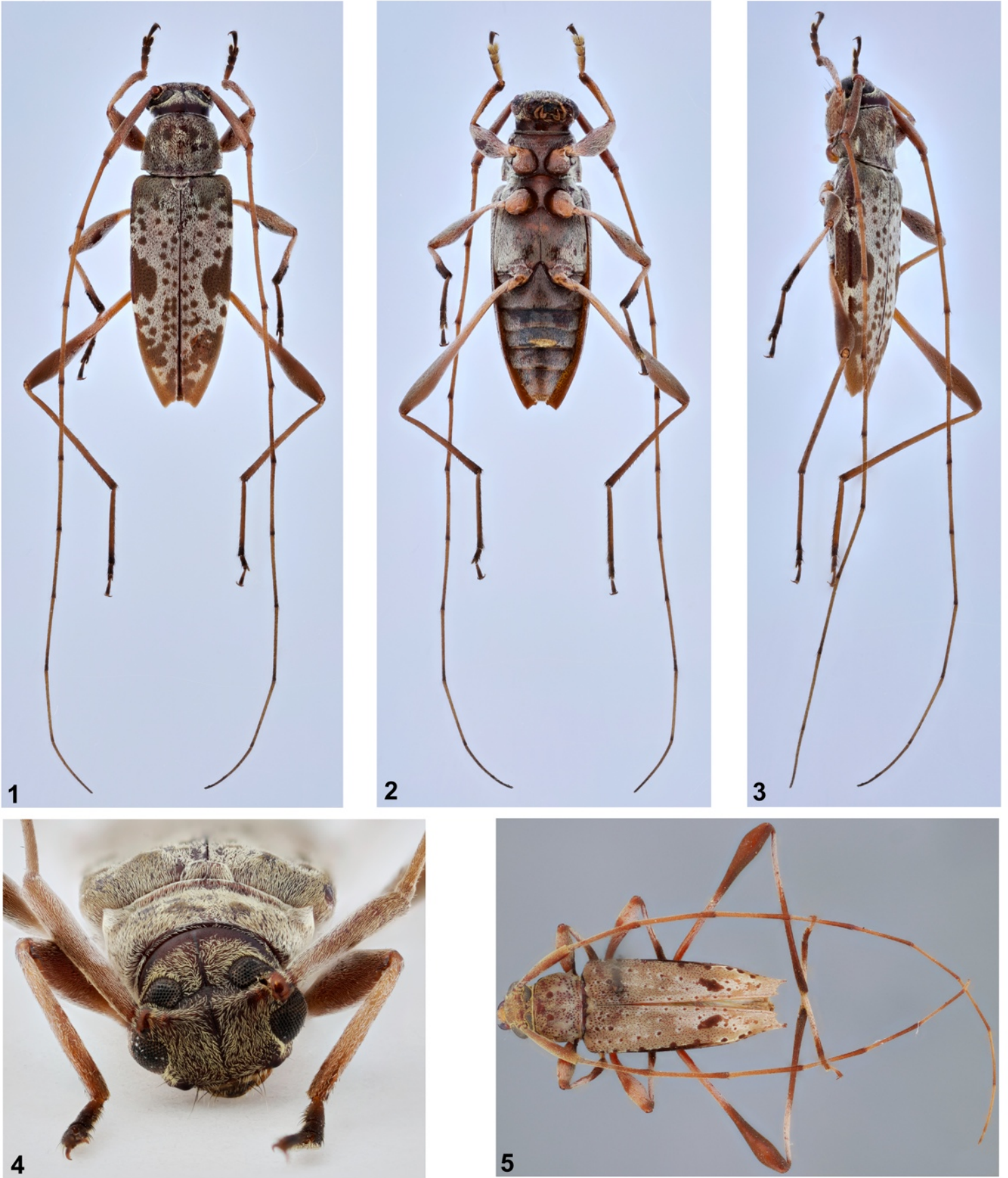
**Legs.** – Femora with abundant grayish-white pubescence not obscuring integument; metafemora distinctly surpassing elytral apex. Protibiae with grayish-white pubescence not obscuring integument, except posterior 2/3 of ventral surface with darker pubescence, and short, thick, erect setae, more distinct close to apex of anterior third. Mesotibiae with abundant grayish-white pubescence not obscuring integument, except slightly distinct dark pubescence on apical third, and short, erect, abundant, thick black setae on dorsal surface of apical third; metatibiae with sparse yellowish pubescence, darker apically, and short, erect, thick black setae interspersed. Metatarsomere I 4.0 times II–III together.

**Abdomen.** – Ventrites with abundant grayish-white pubescence not obscuring integument, slightly denser and longer laterally, except glabrous yellowish-brown area of ventrite 3. Apex of ventrite 5 emarginate centrally.

#### **Dimensions** (mm).

- Total length, 7.2;
- Prothoracic length, 1.4;
- Anterior prothoracic width, 1.4;
- Posterior prothoracic width, 1.5;
- Maximum prothoracic width, 1.8;
- Humeral width, 2.2;
- Elytral length, 5.0.





**Figures. 1-5.** *Anisopodus* spp.

1-4. *Anisopodus leptos*, holotype ♂. 1. Dorsal habitus. 2. Ventral habitus. 3. Lateral habitus. 4. Head, frontal view.  
5. *Anisopodus arachnoides* (Audinet-Serville, 1835), ♂, dorsal view.

**Etymology.** – Greek, “leptos” (λεπτός), meaning slender, slim, and thin; alluding to the body shape of the new species.

**Remarks.** – *Anisopodus leptos* sp. nov. is similar to *A. andicola* Kirsch, 1889 (see photographs on Bezark 2022), but differs by the elytral apex not spiniform (outer angle distinctly spiniform in *A. andicola*), grayish-white pubescence on the elytra not reaching apex (reaching the apex in *A. andicola*), and circular brownish spots on the elytra distinctly larger (very small in *A. andicola*). It differs from *A. degener* Bates, 1885 (see photographs on Bezark 2022), especially by the metafemora distinctly longer and slender (shorter, thicker, not surpassing the elytral apex in males of *A. degener*); from *A. dispar* Bates, 1885 (see photographs on Bezark 2022), by the lateral tubercles of the prothorax not spiniform and not directed backward (spiniform and directed backward in *A. dispar*), and by the metafemoral club not abruptly widened (abruptly widened in *A. dispar*); and from *A. punctipennis* Monné & Martins, 1976 (see photographs on Bezark 2022) by the slender body (stouter in *A. punctipennis*), and by the metafemoral club slender and longer (stouter and shorter in *A. punctipennis*).

***Lepturges (Lepturges) caldensis* sp. nov.**

(Fig. 6-9)

ZooBank: <http://zoobank.org/8B475F1B-F95D-4CE0-9DCF-B4AF643017D4>

**Holotype**, ♀, COLOMBIA, *Caldas*: Manizales, Chinchiná, Reserva Florestal Protectora Planalto (Cenicafé), 04°59'27"N 75°35'28"W, 18.III.1996, 1350 m.s.n.m., Carlos L. Vaamonde leg. (temporarily in SDPC, to be deposited in MHNSUC).

**Description of the holotype.**

**Coloration.** – Integument mostly dark brown; palpi mostly dark reddish brown with irregular dark brown areas; antennae brown basally, gradually reddish brown toward apex. Elytra gradually brown toward apex. Abdominal ventrites reddish brown, except dark brown abdominal process, central area of ventrite 1, and irregular dark brown areas on ventrites 2–5, dark area more distinct centrally, forming fragmented band gradually narrowed toward base of ventrite 5.

**Head.** – Frons very finely, abundantly punctate; with dense yellowish-brown pubescence, except glabrous median groove, and one long, erect, dark seta on each side close to eyes. Vertex and area behind eyes finely, abundantly punctate, except smooth area close to prothorax; slightly depressed between antennal tubercles and upper eye lobes; vertex with dense yellowish-brown pubescence, except glabrous center of depressed area, area close to prothorax, and narrow central band close to smooth posterior area; area behind eyes with dense yellowish-brown pubescence close to eye, glabrous close to prothorax. Genae with abundant yellowish-brown pubescence close to eye, not obscuring integument, very sparse on remaining surface, except glabrous apex; with a few long, erect brownish setae interspersed. Wide central area of postclypeus with pubescence as on frons posteriorly, sparse and with one long, erect brownish setae on each side close to anteclypeus. Labrum with yellowish-brown pubescence not obscuring integument, long, erect brownish setae interspersed, and short fringe of yellowish-brown setae on anterior margin. Gulamentum glabrous, except narrow anterior area with yellowish pubescence not obscuring integument. Distance between upper eye lobes 0.21 times distance between outer margins of eyes; in frontal view, distance between lower eye lobes 0.63 times distance between outer margins of eyes.

Antennae 2.35 times elytral length, reaching elytral apex at apex of antennomere VI. Scape with abundant yellowish-white pubescence not obscuring integument, slightly yellower toward apex, and short, erect, thick dark setae on posterior third of ventral surface. Pedicel with yellowish pubescence not obscuring integument, and a few short, thick, decumbent dark setae ventrally; antennomeres III–XI with yellowish-white pubescence not obscuring integument; antennomeres III–IV with short, erect, thick, sparse dark setae ventrally; antennomeres V–VI with a few short, thick dark setae apically.

Antennal formula based on length of antennomere III:

– Scape = 0.80. – Pedicel = 0.10. – IV = 0.75. – V = 0.65. – VI = 0.60. – VII = 0.55. – VIII = 0.55. – IX = 0.55. – X = 0.50. – XI = 0.45.

**Thorax.** – Prothorax distinctly wider than long; sides slightly rounded on anterior third, tumid from this point to lateral tubercles, then abruptly narrowed to posterolateral angles; lateral tubercles with acute apex, located on posterior quarter. Pronotum minutely, densely punctate on anterior 3/4, with transverse row of coarse punctures and minute, sparse punctures interspersed on posterior quarter; with large brownish pubescent macula one each side of middle, not obscuring integument, from near anterior margin to posterior quarter; with three wide, longitudinal, dense yellowish-brown pubescent bands on anterior 3/4, fused along anterior margin, partially fused close to posterior quarter (lateral bands widened toward anterolateral angles); with irregular brownish pubescent macula laterally on central area; with moderately abundant yellowish pubescence on area of lateral tubercles; with yellowish pubescence not obscuring integument on posterior quarter, almost absent on coarsely punctate region; and with a few long, erect dark setae on area of lateral tubercles. Sides of prothorax with abundant yellowish-brown pubescence partially obscuring integument. Prosternum and prosternal process with abundant yellowish pubescence not obscuring integument, yellower on sides of prosternum; narrowest area of prosternal process 0.32 times procoxal width. Procoxae and mesocoxae with abundant, long yellowish-brown pubescence centrally, darker laterally. Mesoventrite with sparse yellowish-brown pubescence on wide central area, denser laterally; mesanepisternum, mesepimeron, metanepisternum and sides of metaventrite with dense yellowish-brown pubescence; central area of metaventrite with abundant yellowish-white pubescence. Scutellum with dense pubescence, yellowish-brown on anterolateral region, pale yellow on remaining surface.

**Elytra.** – Parallel-sided on anterior half, convergent on posterior half; apex obliquely truncate, with blunt outer angle; coarsely, abundantly punctate on basal half, anterior margin of punctures granulate on basal quarter, coarsely, sparsely punctate on posterior half (forming irregular rows along suture and laterally); with yellowish-brown pubescence on basal seventh, forming irregular projections posteriorly toward next pubescent band; with large, dense pale yellow pubescent macula from about anterior sixth to about middle, with anterior margin irregular and somewhat convex and posterior margin strongly dentate; with narrow, longitudinal, pale yellow pubescent band close to suture, from previous macula to apex; with elongate, V-shaped pale yellow pubescent band on side of dorsal surface, from large pubescent band on anterior half to posterior seventh; with longitudinal, slightly oblique pale yellow pubescent band dorsally, from sutural angle to before middle; with elongate, subelliptical pale yellow pubescent band dorsally, between V-shaped pubescent band and suture, located slightly after middle; and area close to epipleural margin with





**Figures 6-11.** *Lepturges* (*L.*) spp.

**6-9.** *Lepturges* (*L.*) *caldensis*, holotype ♀. **6.** Dorsal habitus. **7.** Ventral habitus. **8.** Lateral habitus. **9.** Head, frontal view.

**10.** *Lepturges* (*L.*) *navicularis* Bates, 1872, ♂, dorsal habitus.

**11.** *Lepturges* (*L.*) *onorei* Santos-Silva, Nascimento, Botero & McClarin, 2021, holotype ♀, dorsal habitus.



yellowish-brown pubescence from base to apex, more pale yellow toward apex.

**Legs.** – Femora pedunculate-clavate; with dense yellowish-brown pubescence partially obscuring integument. Tibiae with abundant yellowish pubescence partially obscuring integument, except posterior 2/3 of ventral surface of protibiae with bristly yellowish-brown pubescence, posterior third of ventral surface of mesotibiae and posterior quarter of metatibiae with yellowish-brown pubescence, and posterior third of dorsal surface of mesotibiae with bristly, both yellowish-brown and brownish pubescence. Metatarsomere I 1.35 times II–III together.

**Abdomen.** – Ventrites with abundant light yellowish-brown pubescence not obscuring integument, more yellowish-white on abdominal process and part of central region of ventrite 1, except glabrous apex of ventrites 2–4, and dense fringe of yellowish-brown setae on apex of ventrite 1; ventrite 5 with long, erect, sparse dark setae intersperse on posterior third; apex slightly concave.

**Dimensions** (mm).

- Total length, 7.6;
- Prothoracic length, 1.2;
- Anterior prothoracic width, 1.5;
- Posterior prothoracic width, 1.7;
- Maximum prothoracic width, 2.1;
- Humeral width, 2.8;
- Elytral length, 5.6.

**Etymology.** – *Lepturges* (*Lepturges*) *caldensis* sp. nov. is named for the Colombian province of Caldas, where the holotype was collected.

**Remarks.** – *Lepturges* (*Lepturges*) *caldensis* sp. nov. is similar to *L. (L.) navicularis* Bates, 1872 (Fig. 10), but differs as follows: scape slender, reaching the base of the prothorax; antennomeres III–XI slender and unicolorous; punctures on the anterior region of the elytra granulate; and prosternal process about one-third the width of a procoxa. In *L. (L.) navicularis*, the scape is stouter and does not reach the base of the prothorax, antennomeres III–XI thicker and bicolorous, elytral punctures not granulate, and prosternal process almost laminiform centrally. Additionally the elytral pubescent pattern is different in these two species. It differs from females of *L. (L.) onorei* Santos-Silva, Nascimento, Botero & McClarin, 2021 (Fig. 11), by the antennomere III distinctly longer than the scape (about as long as the scape in *L. (L.) onorei*), antennomeres III–XI unicolorous (bicolorous in *L. (L.) onorei*), punctures on the anterior region of the elytra granulate (not granulate in *L. (L.) onorei*), prosternal process about one-third the width of a procoxa (very narrow in *L. (L.) onorei*), and different elytral pubescent pattern.

**COLOBOTHEINI** Thomson, 1860

*Colobothea vaamondei* sp. nov.

(Fig. 12–15)

ZooBank: <http://zoobank.org/A2C98CB6-4085-4BEC-BBAD-01A17FE39311>

**Holotype**, ♀, COLOMBIA, *Valle del Cauca*: Playa Rica (Río Garrapatas), 04°27'22.9"N/76°23'17.1"W, 15.VI.1996, Carlos L. Vaamonde leg. (temporarily in SDPC, to be deposited in MHNUSC).

**Description of the holotype.**

**Coloration.** – Integument mostly dark brown; palpomeres brown with yellowish-brown apex; basal area of antennomeres III–XI brownish (more reddish brown depending on light intensity); tarsomeres I–II dark reddish brown; apex of abdominal ventrites 1–4 yellowish-brown.

**Head.** – Frons elongate, very finely, densely punctate, except smooth area close to clypeus; with abundant brownish pubescence partially obscuring integument on wide central area, with irregular pale yellow pubescence interspersed, except glabrous longitudinal middle area, abundant pale yellow pubescence close to genae and inner side of lower eye lobes, and yellowish-brown pubescence close to superior area of lower eye lobes. Vertex finely, moderately abundantly punctate, except smooth median groove (smooth area triangularly widened between upper eye lobes); with one longitudinal yellow pubescent band on each side of glabrous median groove. Area behind upper eye lobe, finely, abundantly punctate; with brownish pubescence partially obscuring integument. Area behind lower eye lobes finely abundantly punctate close to eye, punctures sparser close to prothorax; with brownish pubescence not obscuring integument close to upper eye lobe, and dense, wide transverse yellow pubescent band inferiorly, reaching prothorax and fused with that on genae. Genae about as long as lower eye lobe; finely, sparsely punctate, except smooth area close to frontal area of eye; with yellowish-brown pubescence obscuring integument close to eye, gradually paler and sparser toward apex, except glabrous area near clypeus. Wide central area of postclypeus with dense, bristly pale yellow pubescence, except almost glabrous center. Labrum with abundant pale yellow pubescence close to anteclypeus, shorter and sparser centrally, and a few long, erect brownish setae interspersed, glabrous on remaining surface, except dense fringe of pale yellow setae on anterior margin. Gula glabrous, except narrow anterior area with both brownish and yellowish-white pubescence not obscuring integument. Distance between upper eye lobes 0.20 times distance between outer margins of eyes; in frontal view, distance between lower eye lobes 0.54 times distance between outer margins of eyes. Antennae 1.7 times elytral length, reaching elytral apex at apex of antennomere VII. Scape mostly with abundant yellowish-brown pubescence not obscuring integument, except white pubescent macula on middle of inner surface, and longitudinal white pubescent band on basal half of ventral surface; with long, erect dark setae ventrally, especially near apex. Pedicel with yellowish-brown pubescence not obscuring integument, and long, erect, abundant dark setae ventrally. Antennomeres III–VI and VIII–XI with dense white pubescence basally, this area wider toward distal segments, and brownish pubescence not obscuring integument on remaining surface; antennomeres VII and IX with brownish pubescence not obscuring integument; antennomeres III–V with long, erect, sparse dark setae ventrally, more abundant apically and on antennomere III; antennomeres VI–IX with short, thick dark setae apically; antennomeres III–V slightly widened apically.

Antennal formula based on length of antennomere III:

- Scape = 1.04. – Pedicel = 0.36. – IV = 0.79. – V = 0.54. – VI = 0.46. – VII = 0.39. – VIII = 0.32. – IX = 0.29. – X = 0.21. – XI = 0.18.

**Thorax.** – Prothorax wider than long; sides uniformly divergent from anterolateral angles to posterolateral angles. Pronotum mostly smooth, except arched row of coarse, deep punctures posteriorly, and four coarse, shallow punctures, one on each side under row of deep punctures, one on each side of central area just above row of deep punctures; sides with longitudinal wide yellow pubescent band, from anterior to posterior margin, reaching superior area of sides of prothorax, obliquely directed upward and inward apically (apex of this pubescent area yellower); with rectangular pubescent area centrally on posterior third, starting close to row of deep punctures, yellow on sides close to punctures, pale yellow on central area close to punctures, pale yellow on each side, pale yellow on narrow pale yellow band on each side of narrow and glabrous central area, and brownish between pale yellow areas; with pale yellow pubescent E-shaped macula on central area of anterior third (pubescence yellower on centrally), with transverse brownish pubescent macula on central area; with longitudinal pale yellow pubescent band centrally, irregular pale yellow pubescent spot on each side of previous band, and brownish pubescence between them; with longitudinal yellowish pubescent band on each side of central pubescence, following the superior and inferior arms of E-shaped macula; with three pubescent spots from near anterior margin





12



13



14



15



16



17

**Figures 12-17.** *Colobothea* spp.

12-15. *Colobothea vaamondei*, holotype ♀. 12. Dorsal habitus. 13. Ventral habitus 14. Lateral habitus. 15. Head, frontal view.  
16-17. *Colobothea colombiana* Monné, 1993, holotype ♂. 16. Dorsal habitus. 17. Ventral habitus.



to after middle, the superior one yellow, the two other pale yellow, located between wide lateral yellow pubescent band and E-shaped band; dense dark brown pubescence from anterior to posterior margin, located between wide lateral pubescent band, E-shaped band, and posterior rectangular pubescent area; remaining surface glabrous; and a few long, erect dark setae close to posterolateral angles. Sides of prothorax with subtriangular pale yellow pubescent macula posteriorly, brownish, close to yellow pubescent band on pronotum, and dense pale yellow pubescence on postcoxal process. Prosternum with dense yellow pubescence laterally, yellowish-white distinctly sparser on remaining surface, especially centrally. Prosternal process with moderately abundant yellowish-white pubescence not obscuring integument, sparser centrally; narrowest area 0.56 times procoxal width. Mesoventrite glabrous on wide central area, with dense yellow pubescence laterally; mesanepisternum with somewhat abundant yellow pubescence close to mesoventrite, sparse on remaining surface; mesepimeron mostly glabrous; mesoventrite apical sides projected laterally, and posterior margin widely emarginate; with dense, bristly yellow pubescence partially obscuring integument; narrowest area 1.26 times mesocoxal width. Metanepisternum with yellow pubescence basally and apically, and short, very sparse, decumbent pale yellow setae on remaining surface. Sides of metaventrite with dense yellow pubescence close to mesocoxal cavity and posteriorly, glabrous on large, somewhat V-shaped remaining surface; wide central area with abundant yellow pubescence not obscuring integument, except glabrous metathoracic discrimen. Scutellum with dense, triangular yellow pubescent macula anterocentrally, and dense yellow pubescence on posterior margin.

**Elytra.** – Coarsely, moderately abundantly punctate on anterior half, denser on circum-scutellar region, except smooth humeral area, punctures distinctly sparser on posterior half; slightly longitudinally sulcate, sulcus more distinct on sides of anterior half; humeral carina strongly marked; with two small yellow macula basally between scutellum and humerus; with short, elongate pale yellow macula under and close to the scutellum, not reaching central area of scutellum, together making a triangular area with sparse brownish pubescence; with subcircular pale yellow macula dorsally close to humerus; with four subcircular pale yellow pubescent maculae on anterior third, one between epipleural margin and humeral carina, three dorsally, together forming an oblique row; with three large, subcircular pale yellow pubescent macula just after middle, outer most on the humeral carina, reaching area between epipleural margin and humeral carina, two dorsally, together forming a slightly arched row; with two subcircular pale yellow pubescent bands on posterior quarter, outermost on humeral carina, another on center of dorsal surface; with one irregular, transverse pale yellow pubescent macula close to apex; with pale yellow pubescent macula basally under humerus; remaining surface with longitudinal, irregular pale yellow pubescent bands, and dark brown pubescence interspersed on some areas; apex sinuous, with long spine on outer angle and rounded sutural angle.

**Legs.** – Femora with abundant pale yellow pubescence not obscuring integument, except brownish pubescent band on dorsal surface of femoral club. Tibiae with yellowish-white pubescent ring after middle, not reaching ventral surface on protibiae; basal area almost glabrous dorsally, with yellowish-white pubescence laterally and ventrally, sparser than on pubescent ring; apical area with brownish pubescence dorsally and laterally, and bristly yellowish-brown pubescence ventrally; posterior half of dorsal surface of mesotibiae with short, thick, erect dark setae. Tarsomeres I and II with yellowish-white pubescence; metatarsomere I slightly longer than II–III together.

**Abdomen.** – Ventrites 1–3 with three pale yellow pubescent maculae on each side, one close to superior margin, one close to inferior margin, another larger, located more centrally, close to inferior margin, prolonged toward abdominal process on ventrite 1; ventrite 1 with spare pale yellow pubescence centrally; ventrite 4 with four pale yellow pubescent maculae, one laterally, close to posterior margin, another larger, centrally, from anterior to posterior margin and partially fused centrally; ventrite 5 with two subtriangular pale yellow pubescent maculae basally close to anterior margin, and two yellowish-white pubescent maculae laterally close to apex. Apex of ventrite 5 slightly concave, with spiniform outer angles.

### **Dimensions** (mm).

- Total length, 12.6;
- Prothoracic length, 2.6;
- Anterior prothoracic width, 3.3;
- Posterior prothoracic width, 3.8;
- Maximum prothoracic width, 4.8;
- Humeral width, 5.6;
- Elytral length, 8.8.

**Etymology.** – *Colobothea vaamondei* sp. nov. is named in honor of Carlos L. Vaamonde, a good friend of the first author and collector of the holotype.

**Remarks.** – *Colobothea vaamondei* sp. nov. is slightly similar to *C. colombiana* Monné, 1993 (Figs 16–17), due to the pale yellow pubescent macula below the scutellum and the subcircular pale yellow pubescent bands on posterior half of the elytra. However, they differ as follows: body slender (stouter in *C. colombiana*), pubescence on center of the pronotum sparser and forming a complex pattern (denser and forming longitudinal bands in *C. colombiana*), sparser elytral pubescence (denser in *C. colombiana*), slender and longer scape and antennomere III (stouter and shorter in *C. colombiana*), posterior half of the elytra with three subcircular pubescent maculae on its superior region (two in *C. colombiana*). Although the holotype of *C. vaamondei* sp. nov. is a female and the holotype of *C. colombiana* is a male, those differences cannot be considered as sexual dimorphism because this type of difference does not occur in other species of the genus. It is also similar to *C. picturata* Monné, 1993 by the same features of *C. colombiana*, and differs by the same features, except the shape and length of the scape and antennomere III. In the holotype of *C. picturata* the third pale yellow pubescent macula just after the middle of the elytra is present, although slightly distinct and more irregular, and the elytra are mostly covered with dense and greenish-brown pubescence.

### **Acknowledgments**

The first author is grateful to Carlos L. Vaamonde (INRAE, UR0633 Zoologie Forestière, Orléans, France) for providing of some specimens used in this study and collected by him in Colombia. Thanks also to Luis Miguel Constantino (Cenicafe, Colombia) for the photograph of the type locality of *Lepturges (Lepturges) caldensis*. We also express our sincere thanks to Juan Pablo Botero (Pontificia Universidad Javeriana, Bogotá, Colombia), for trying to find more specimens of *Colobothea vaamondei* and *Lepturges (Lepturges) caldensis*. Thanks also to Larry G. Bezark (California, USA) for the accurate review of the manuscript.

### **References**

- Aurivillius C., 1923. – Cerambycidae: Lamiinae II, pp. 323–704. In: Junk, W. & Schenkling, S. (eds.). *Coleopterorum Catalogus*, Pars 74. W. Junk, Berlin, 704 pp.
- Bezark L.G., 2022. – A photographic Catalog of the Cerambycidae of the World. New World Cerambycidae Catalog. Available from: <http://bezbycids.com/byciddb/wdefault.asp?w=n/> (Last accessed 25 May 2022).

Gilmour E.F., 1965. – Catalogue des Lamières du Monde (Col., Cerambycidae). *Museum G. Frey, Tutzing bei München*, 8: 559-655.

Monné M.A., 2022. – Catalogue of the Cerambycidae (Coleoptera) of the Neotropical region. Part I. Subfamily Lamiinae. Available from: <https://cerambycids.com/catalog/> (Last accessed 25 May 2022).

Nascimento F.E.L., Santos-Silva A. & McClarin J., 2020. – Flat-faced longhorn beetles (Coleoptera: Cerambycidae: Lamiinae) from the

Neotropical region: new species from Ecuador, nomenclatural changes and notes. *Annales de la Société entomologique de France* (NS), 1-20. <https://doi.org/10.1080/00379271.2020.1750972>

Tavakilian G.L. & Chevillotte H., 2022. – Titan: base de données internationales sur les Cerambycidae ou Longicornes. Available from: <http://titan.gbif.fr/> (Last accessed 26 June 2022).

## Résumé

Devesa S. & Santos-Silva A., 2022. – Description de nouveaux Lamiinae américains. *Faunitaxys*, 10(41): 1 – 9.

Trois nouvelles espèces sont décrites de la région néotropicale : *Anisopodus leptos* **sp. nov.**, de Bolivie (Acanthocinini); *Lepturges (Lepturges) caldensis* **sp. nov.**, de Colombie (Acanthocinini); et *Colobothea vaamondei* **sp. nov.**, de Colombie (Colobotheini).

Mots clés. – Coleoptera, Cerambycidae, Acanthocinini, Colobotheini, longicornes, *Anisopodus*, *Lepturges*, *Colobothea*, taxonomie, nouvelle espèce, description, morphologie, Bolivie, Colombie, région néotropicale.

---

## Derniers articles publiés

Lourenço W. R. & Velten J., 2022. – Further insights on Cretaceous Burmite scorpions with the descriptions of a new genus and species (Scorpiones: Buthoidea: Buthidae). *Faunitaxys*, 10(35): 1 – 5. [https://doi.org/10.57800/faunitaxys-10\(35\)](https://doi.org/10.57800/faunitaxys-10(35))

Lanuza-Garay A., 2022. – A New Species of *Confluentia* Santos-Silva, Galileo & McClarin (Cerambycidae: Lamiinae: Colobotheini) from Panamá. *Faunitaxys*, 10(36): 1 – 3. [https://doi.org/10.57800/faunitaxys-10\(36\)](https://doi.org/10.57800/faunitaxys-10(36))

Lapèze J., 2022. – Le genre *Centronodus* Funkhouser (Hemiptera : Membracidae : Centronodinae) en Guyane française et description d'une nouvelle espèce. *Faunitaxys*, 10(37) : 1 – 19. [https://doi.org/10.57800/faunitaxys-10\(37\)](https://doi.org/10.57800/faunitaxys-10(37))

Qiu L., 2022. – A new species of *Oospira* Blanford, 1872 (Gastropoda: Stylommatophora: Clausiliidae) from Chongqing, China. *Faunitaxys*, 10(38) : 1 – 5. [https://doi.org/10.57800/faunitaxys-10\(38\)](https://doi.org/10.57800/faunitaxys-10(38))

Santos-Silva A. & Bezark L. G., 2022. – On some species of *Anobrium* Belon (Coleoptera, Cerambycidae, Pteropliini). *Faunitaxys*, 10(39): 1 – 8. - [https://doi.org/10.57800/faunitaxys-10\(39\)](https://doi.org/10.57800/faunitaxys-10(39))

Santos-Silva A., 2022. – Description of two new species and one new genus of American Cerambycidae, and notes on *Amphicnaeia nigra* Galileo & Martins (Coleoptera). *Faunitaxys*, 10(40): 1 – 8. [https://doi.org/10.57800/faunitaxys-10\(40\)](https://doi.org/10.57800/faunitaxys-10(40))

## Faunitaxys est échangée avec les revues suivantes (« print versions »):

- Annali del Museo Civico di Storia Naturale G. Doria (Italie)
- Boletín de la Asociación española de Entomología (Espagne)
- Boletín de la Sociedad Andaluza de Entomología (Espagne)
- Bollettino del Museo di Storia Naturale di Venezia (Italie)
- Bulletin de la Société linnéenne de Lyon (France)
- Bulletin of Insectology (Italie)
- Heteropterus Rev. Entomol. (Espagne)
- Israel Journal of Entomology (Israël)
- Klapalekiana (République Tchèque)
- Koleopterologische Rundschau (Allemagne)
- Memorie del Museo Civico di Storia Naturale di Verona (Italie)
- Nova Supplementa Entomologica (Allemagne)
- Proceedings of the Entomological Society of Washington (USA)
- Revue suisse de Zoologie (Suisse)
- Spixiana (Allemagne)
- Stuttgarter Beiträge zur Naturkunde A, Biologie (Allemagne)
- Zoosystematica Rossica (Russie)



# Faunitaxys

*Volume 10, Numéro 41, Juillet 2022*

## SOMMAIRE

Description de nouveaux Limiinae américains.

*Sergio Devesa & Antonio Santos-Silva* . . . . . 1 – 9

## CONTENTS

Description of new taxa in American Lamiinae (Coleoptera, Cerambycidae).

*Sergio Devesa & Antonio Santos-Silva* . . . . . 1 – 9

***Illustration de la couverture*** : Reserva forestal protectora de Planalto (Colombia).

Crédits photos:

© **Sergio Devesa**: Fig. 1-4, 6-9 & 12-15.

© **Antonio Santos-Silva**: Fig. 5, 10-11 & 16-17.

© **Archivo fotográfico de Cenicafé** (cortesía de L.M. Constantino) : Couverture.

Publié par l'Association Française de Cartographie de la Faune et de la Flore (AFCFF)