



HAL
open science

Garnet Trade in Early Medieval Europe: The Italian Network

Cristina Boschetti, Bernard Gratuze, Nadine Schibille

► **To cite this version:**

Cristina Boschetti, Bernard Gratuze, Nadine Schibille. Garnet Trade in Early Medieval Europe: The Italian Network. *European Journal of Archaeology*, In press, <10.1017/ea.2022.25>. <hal-03732735>

HAL Id: hal-03732735

<https://hal.science/hal-03732735v1>

Submitted on 8 Sep 2022

HAL is a multi-disciplinary open access archive for the deposit and dissemination of scientific research documents, whether they are published or not. The documents may come from teaching and research institutions in France or abroad, or from public or private research centers.

L'archive ouverte pluridisciplinaire HAL, est destinée au dépôt et à la diffusion de documents scientifiques de niveau recherche, publiés ou non, émanant des établissements d'enseignement et de recherche français ou étrangers, des laboratoires publics ou privés.



HAL Authorization

Garnet Trade in Early Medieval Europe: The Italian Network

CRISTINA BOSCHETTI , BERNARD GRATUZE  AND NADINE SCHIBILLE 

Institut de Recherches sur les Archéomatériaux, UMR7065, CNRS University of Orléans, France

The reconstruction of the trade routes along which garnets reached Europe in the early Middle Ages demonstrates the persistence of long-distance trade after the fall of the Western Roman Empire. Early medieval garnet jewellery from Italy and the presence of lapidary workshops are important evidence for understanding the dynamics of this commerce but are systematically overlooked. Chemical trace-element analysis (LA-ICP-MS) of loose and inset garnets and glass inlays from burials in sixth-seventh-century Lombardy has identified South Asian and Bohemian garnets together with Egyptian glass. This combination shows that the long-distance trade routes crossing the Peninsula and the Alpine passes played a key role in the European market for garnets, significantly modifying the current model of the Mediterranean garnet trade and shedding new light on the character of the elites who emerged in Italy during the Migration period.

Keywords: early Medieval Italy, jewellery, garnet, glass gems, gem sourcing, LA-ICP-MS

INTRODUCTION AND AIMS

Jewellery inset with garnets is emblematic of the status of the elites that emerged in Europe during the Migration period between the fifth and seventh century AD (Arrhenius, 1985; Calligaro et al., 2007; Calligaro & Périn, 2013, 2019; Hamerow, 2017; Hilgner, 2018). The success of garnet jewellery in early medieval Europe is closely connected to the diffusion of cloisonné. In this goldsmithing technique, strips or threads are soldered to a metallic plate to create cells, the so-called ‘cloisons’ that are inset with thin plaques of precious materials (Arrhenius, 1985). Red garnet is the preferred material of medieval cloisonné, but it was frequently flanked by coloured glass, at least since the early sixth century (Calligaro et al., 2007). Personal

ornaments from the Italian peninsula follow this broader European trend, but have scarcely been studied, and garnets set in jewellery from Italian sites have never been analysed (Aimone, 2011). Hence, Italy has been overlooked by several recent studies on the provenance and trade of garnets in early medieval Europe, resulting in an incomplete model for the routes of that trade (Pion et al., 2020).

The current model of the circulation of garnets is based on the results of the chemical and mineralogical characterization of thousands of garnets from sixth-seventh-century contexts in France, Belgium, Switzerland, Slovenia, Hungary, the Netherlands, the British Islands, and Nubia (Calligaro et al., 2007; Šmit et al., 2014; Hamerow et al., 2015; Pion et al., 2020; Then-Obłuska et al., 2021). These

studies show that, until the end of the fifth century, the market was dominated by stones mined in southern Asia and sent to the Mediterranean via the Indian Ocean maritime route (Pion et al., 2020, with references). The import of South Asian garnets ceased at the end of the sixth century, when Bohemian and Portuguese gems appeared for the first time on the scene. Studies of early medieval garnets focus on the Merovingian world, and the current reconstruction of the route followed by garnets identifies Alexandria and Marseille as the two major hubs that controlled their circulation in the Mediterranean area (Pion et al., 2020: 849). Egypt, with the port of Alexandria, was certainly the point of entry for Asian goods directed to the Mediterranean. Marseille, the main emporium on the French coast, is proposed as the place where garnets arrived from Alexandria with two intermediate stops, one at Carthage and one in Sardinia, and as the exclusive point of departure for the entire distribution network of garnets in Europe (Pion et al., 2020: 859, fig. 36.17). This overlooks the other sea route that connected Alexandria to Marseille, calling in Sicily and then running along the Italian peninsula (Pieri, 2002).

The recently documented fifth-century lapidary workshop in Alexandria is currently regarded as the only firm archaeological evidence for garnet working (Rifa-Abou El Nil & Calligaro, 2021) before the eighth century AD (Ljungkvist et al., 2017). However, lapidary workshops cutting garnets are clearly documented in at least two Italian sites: Monte Barro and Crypta Balbi (Figure 1). The Ostrogothic fort of Monte Barro, located on the mountains overlooking Lecco in Lombardy, was occupied during the first half of the sixth century (De Marchi, 2001; Superchi et al., 2001; Martínez Jiménez, 2011, with references), while garnets were worked in the jewellery workshop of the Crypta Balbi in

Rome, abandoned during the seventh century (Giannichedda et al., 2001). Raw garnets were also excavated at Loppio, a fortified settlement in the eastern Alps active between the sixth century and the first half of the seventh, but the study of this context is still preliminary, and the identification of a lapidary workshop is ambiguous (Maurina, 2008). The first century of frequentation of Loppio and the full span of occupation at Monte Barro coincide perfectly with the period of circulation of South Asian garnets. This important but largely ignored evidence indicates that raw garnets, probably including garnets mined in southern Asia, reached Italy during the early Middle Ages, revealing a scenario that is fundamentally different from the currently accepted model of garnet trade.

Cemeteries of the sixth–seventh century in the Po valley provide an interesting context for studying the dynamics of the circulation of garnets. From AD 568 onwards, the region became part of the first nucleus of the Lombard Kingdom, established by communities of migrants who settled in Italy (Brogiolo, 2017). This sector of the emerging kingdom occupied a region traversed by long-distance trade, which still ran along the former Roman road network (Knobloch, 1998). Lombardy was a key area for the regulation of exchange between Italy and the transalpine region, as the Lombard rule controlled the Alpine passes (McCormick, 2001: 68), and Milan marked the starting point of the via Aurea, the road connecting the Po to the Rhine valley via the Splügen Pass (Knobloch, 1998).

In this article, we present the results of the first chemical trace–element analysis of garnets from early medieval Italy, investigating jewellery and loose garnets from furnished burials from two sixth–seventh-century cemeteries in Lombardy. This is



Figure 1. Map of Italy showing the Roman road network and the main sites discussed: in red the cemeteries of Lodi Vecchio and Porzano, in yellow the lapidary workshops of Monte Barro, Loppio, and Crypta Balbi (Rome) (adapted from the Digital Atlas for Roman and Medieval Civilizations).

complemented by the analysis of glass gems and plaques for jewellery, to determine whether these glasses were made locally or were sourced from long-distance trade. Our results show that the current

model of the garnet trade routes in early medieval Europe needs to be substantially revised and highlight the supra-regional character of a new elite that emerged in Italy during the Migration period.

THE CEMETERY OF CAMPO MARCHIONE IN LENO AND THE BURIALS OF CORTE BASSA IN LODI VECCHIO

The finds investigated for this study were selected from sixth–seventh-century female burials excavated in two Lombard sites: the large rural cemetery of Campo Marchione at Porzano in the commune of Leno (Giostra, 2011, 2017) and a small urban cemetery in Corte Bassa, in the south-eastern quarter of the Roman town of Laus Pompeia, now Lodi Vecchio (Jorio & Ferrucci, 2017) (Figure 1). The cemetery of Campo Marchione was established in the last quarter of the sixth century, when the first generation of migrants settled in Italy, and remained in use until the end of the eighth century, when the site was abandoned (Giostra, 2011, 2017). The study of glass beads from the cemetery identified European products together with exotic specimens imported from Egypt and, to a minor extent, from India and Mesopotamia (Boschetti et al., 2020). Cloisonné garnet jewellery is documented in three exceptional female burials, two of which date to the end of the sixth century, and one to the first decades of the seventh (Giostra, 2011: 258–59, 2017: 85–86).

At Corte Bassa, four tombs clearly form a coherent group. Their location, close to a newly-founded church, the small number of burials, and the exceptional richness of the grave goods are characteristics observed elsewhere in Lombard Italy. Such small cemeteries were reserved for aristocratic families, as at Trezzo d'Adda (Ambrosioni & Lusuardi Siena, 1986) and Mantova (Facchinetti & Castagna, 2017). Two of the four tombs, one of a girl (T US 61) and one of a woman (T US 6), as identified by anthropological analysis, stand out for the quantity and quality of their jewellery. The girl's grave was built in timber in line with German tradition

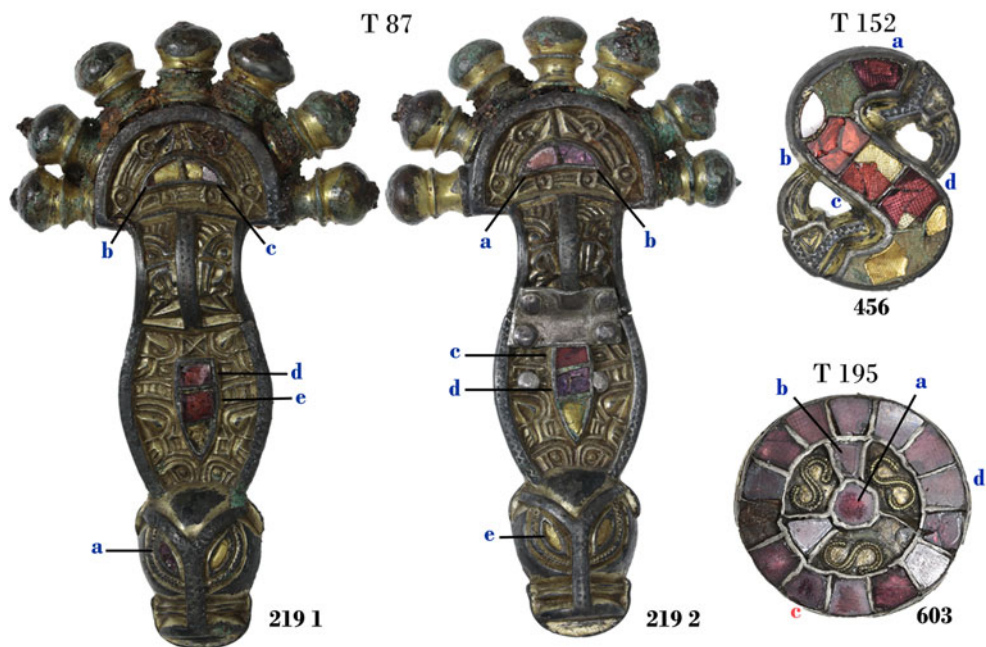
and dates to the last quarter of the sixth century, while the brick structure of the woman's tomb and its stratigraphic position fits in the seventh century. Preliminary studies suggested that the tomb of the woman had been looted, because several garnets were found loose and were interpreted as gems left behind after the gold settings had been removed (Jorio & Ferrucci, 2017: 162). However, one gold coin and several filigree-gold beads, with gold garnet-inlaid jewellery were still *in situ*, and we could ascertain that the loose garnets were instead a cache of finished and unfinished gems and wasters.

MATERIALS AND METHODS

The objects presented here include all the jewellery inlaid with garnets from Campo Marchione and a selection of personal ornaments from Corte Bassa (Figures 2–3). Sixty-four garnets were analysed, both loose and set in jewels. The analysis also included four glass plaques, two cabochon gems, and four chips of translucent purple glass, deposited in the cache of loose garnets at Corte Bassa and erroneously identified as garnets before analysis.

All objects were investigated by optical microscopy, and compositional analyses were conducted at the Centre Ernest-Babelon of the CNRS Institut de Recherches sur les Archéomatériaux of Orléans using laser ablation inductively coupled plasma mass spectrometry (LA-ICP-MS). Details of the mass spectrometer used, ablation device, the procedure employed (e.g. Gratuze, 2016), and the reference material used for calibration and verification are given in the online [Supplementary Material](#) together with relevant tables (Tables S1 and S2).

PORZANO-CAMPO MARCHIONE

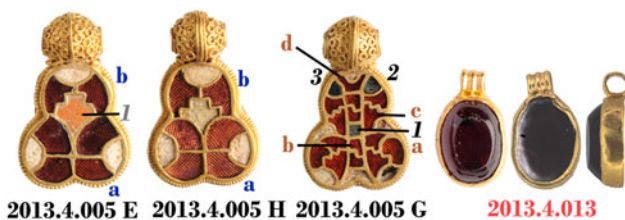


LODI VECCHIO-CORTE BASSA

T US 61

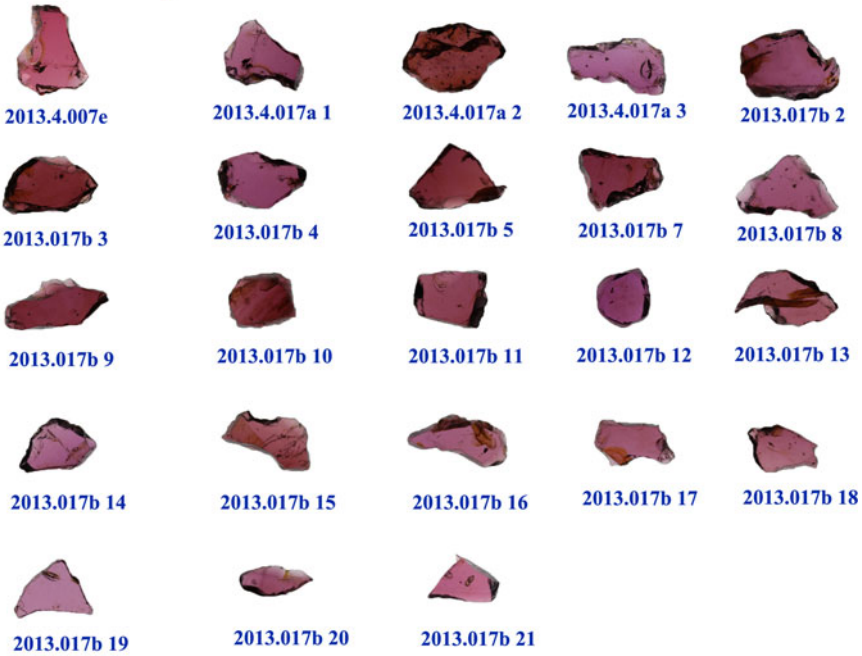
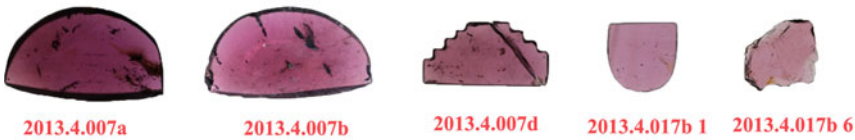


T US 6



COMPOSITIONAL GROUPS	
GARNET	Group I Group II Group IIIa Group V
GLASS	Foy 3.2 HIMT Egyptian cuprite Cu/Pb
	1 cm

Figure 2. Jewellery from Campo Marchione–Porzano and Corte Bassa–Lodi Vecchio, with indication of tomb (T), sample number, garnet, and base glass type. Photographs by Cristina Boschetti reproduced with permission of the Soprintendenza Archeologia, Belle Arti e Paesaggio of the provinces of Bergamo and Brescia, and of Cremona, Lodi, and Mantova.

GARNET Group I**GARNET Group II****GARNET Group IIIa****GLASS Foy 3.2**

1 cm

Figure 3. Loose garnets and glass chips from the tomb of a woman (T US 6) at Corte Bassa-Lodi Vecchio, divided into compositional groups. Photographs by Cristina Boschetti reproduced with permission of the Soprintendenza Archeologia, Belle Arti e Paesaggio of the provinces of Bergamo and Brescia, and of Cremona, Lodi, and Mantova.

RESULTS

Typology and style

The typology and context of the four cloisonné brooches from Campo Marchione (all artefacts are illustrated in [Figure 2](#), as are those from Corte Bassa) date them to the end of the sixth century and suggest two different provenances. The pair of gilded silver bow fibulae with head ornamented with radiating onion-shaped knobs from Tomb 87 (nos. 219 1 and 2) and the S-shaped silver brooch with bird heads from Tomb 152 (no. 456) are related to examples from Cividale del Friuli, attributed to Italian workshops and dated to the end of the sixth century (Miazzo, 1999; Ahumada Silva, 2012: 41). The disc brooch from Tomb 195 (no. 603), by contrast, is unique in Italy, showing similarities with small silver disc brooches documented in the Merovingian area and believed to be from workshops active in France (Giostra, 2011: 262; Dalceggio, 2018: 116). The two brooches from the tomb of the girl of Corte Bassa (T US 61) can also be assigned to Merovingian workshops (Dalceggio, 2018: 14–17, with references). While the silver rosette (2013.4.033) belongs to a well-documented type, the gold S-shaped brooch (2013.4.040) has no exact parallels, but the same cloisonné work and the association of garnets with circular cabochon gems in translucent glass are well documented in Merovingian regions (Calligaro et al., 2007: 137). No gold pendants with beaded frame inset with large garnets like those excavated in Corte Bassa (nos. 2013.4.034 and 38) are known from the Italian peninsula but similar gems with the same gold setting can be found in dozens of reused decorations of jewelled reliquaries, crosses, and book bindings from Lombardy attributed to local workshops active between the tenth and the twelfth

centuries (Tomei, 1999; Bertelli & Stella, 2001). Examples of pendants have been found in Saxon burials of the second half of the seventh century and are credited to Byzantine workshops active in the Italian peninsula (Crawford, 2004). The garnet bead (2013.4.004 u) was strung in a necklace with glass, calcedony, and rock crystal beads. Spherical garnet beads are documented in the sixth and seventh century in Lombard cemeteries, but knowledge of such artefacts is too limited to reconstruct their exact distribution and chronology (Giostra, 2012: 269).

Unlike the jewellery from the tomb of the girl, the entire set of ornaments from the tomb of the woman (T US 6) can be attributed to Italian workshops. The absence of traditional brooches in this burial is consistent with changes in the style of personal ornaments documented in Italy in the seventh century (Giostra, 2011; Micheletto et al., 2014: 18). The gold pendant inlaid with an oval garnet (2013.4.013) is clearly in Byzantine taste. The five cloisonné pendants, of which three are analysed in this study (2013.4.005E, H, and G), stand out for their high technical quality and are characterized by a combination of cloisonné on the body and filigree on the beads that form the suspension loop. Both the bodies and the beads are strikingly similar to gold jewellery attributed to workshops probably operating in Italy and deposited in burials dated between the end of the sixth century and the first decades of the seventh. The body of the pendants are similar to examples from Domagnano and Cividale (Brozzi, 1990; Aimone, 2011), while the filigree beads are identical to those used in gold coin pendants from Nocera Umbra, Rome, and Klepsau (Koch, 1990: tables 2, 9; Arslan, 2011). The same filigree decoration with sections of gold threads forming minute circles is also employed in a series of disc brooches from Castel

Trosino, Cividale del Friuli, Parma, and Isola Rizza (Verona) (Dalceggio, 2017, 2018: 135, 138–52, 156). Part of the assemblage from the woman's tomb at Corte Bassa, including loose chips of garnets and gems (Figure 3), were probably inside a casket, of which few fragments survive. While no garnet caches have thus far been recovered in Italy, several examples have been found in high-ranking female and, to a minor extent, male burials in southern Britain, Scandinavia, and Hungary (Horvath & Bendo, 2011; Hamerow, 2017).

Lapidary and glass forming techniques

Members of the garnet family can be cut and polished using hard minerals, like diamond, corundum, and emery. Toolmarks on the surface of medieval gems suggest the use of rotating wheels coated with powdered emery or corundum and actioned by a lathe (Arrhenius, 1985: 55–58; Rifa-Abou El Nil & Calligaro, 2021), following a process described by Roman and medieval sources (Cannella, 2006: 262–84). The thin plaques used in cloisonné can be obtained either by heating the stone, which tends to fracture along its crystalline structure, or by incising guidelines with a wheel and snapping the gem (Arrhenius, 1985: 43–45). The loose unfinished garnets from the Lodi Vecchio cache vary from two to three millimetres in thickness and are partially polished on both sides. Part of the plaques are not perfectly flat near the edges, where the surface has in some cases the gritty texture left by the passage of a wheel. Lines traced by rotating tools are clearly visible and cross the surface of part of the plaques (Figure 4a, b). The edges are uneven and freshly fractured. These characteristics identify these garnets as wasters resulting from the last stages of shaping

the cloisonné plaques, before proceeding to the final mirror polishing. By contrast, the loose garnets from the cache are carefully finished pieces, with convex surfaces, flat bases, and wheel-cut tapering borders (Figure 4c, d). The front is mirror-polished, and feather-shaped polishing lines are clearly visible under optical microscope (Figure 4d). Such lines are created by the repeated passages of a cloth with abrasive powder and water or, more conveniently, by using a damp wooden rotating wheel covered with abrasive powder (Arrhenius, 1985: 76).

All the garnets set in cloisonné are flat, with wheel-cut facets running along the edges and mirror-polished surfaces. The shape of the plaques is always perfectly consistent with the design of the cloisonné (Figure 4e, f). A comparable technique was used for the two larger garnets set in the Lodi Vecchio square pendants (Figure 3). As for the oval pendant, its gem (Figure 2) is concave on the back, indicating that it was not cleaved by heating. Similar plain oval or circular stones have been identified as blanks for gem carving, imported to Europe from India as semi-finished gems during late antiquity and which remained in circulation for over a century (Adams, 2011: 12–13). The garnet bead is spherical and carefully polished and was obtained by a combination of flaking, drilling, and polishing (Figure 2). Stone beads can be manufactured using a process still used in traditional agate bead-making in present-day India (Bhan et al., 2017).

The four purple glass plaques from the garnet cache are thin and flat on both sides (Figure 4). Similarly coloured glass plaques were used during late antiquity as inlays and were formed by pressing and tooling the hot glass on a marver (flat surface on which softened glass is rolled (Verità et al., 2013). The fresh fractures at the edges are the result of cold cutting,

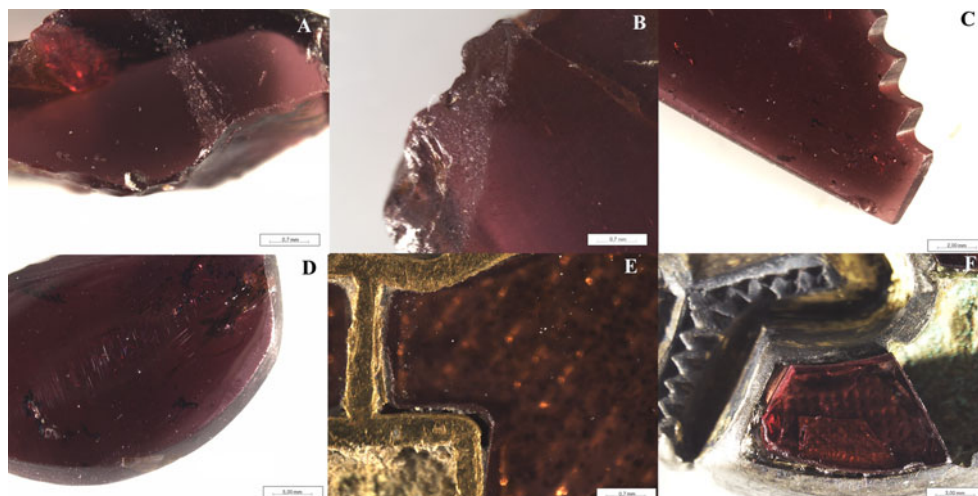


Figure 4. Toolmarks and detail of lapidary work on loose and inset garnets, observed under optical microscope. A–B: lines left by the turning wheel and fresh fractures along the edges of garnet wasters; C: vertical polishing lines on the edges; D: feather polishing lines on the surface of finished loose gems; E–F: clean-cut edges of plaques set in cloisonné. Photographs by Cristina Boschetti reproduced with permission of the Soprintendenza Archeologia, Belle Arti e Paesaggio of the provinces of Bergamo and Brescia, and of Cremona, Lodi, and Mantova.

probably using a grozing iron (a type of pliers used to cut glass slabs). A similar process was presumably followed to obtain the plaques inlaid in the gold pendants. The cabochon blue gems set in the S-shaped brooch (2013.4.040) are the result of hot-working. A convenient procedure to form glass gems in a controlled way is to press a gob of soft glass into an open mould, as documented in Egyptian workshops making glass inlays during the Hellenistic and Roman period (Stern & Schlick-Nolte, 1994: 49–50).

Chemical composition of the garnets and the glass

The minerals classified under the garnet family are aluminosilicates, displaying different crystal forms with a hardness on the Mohs scale between 6.5 and 7.5 (Muhling & Griffin, 1991; Calligaro et al., 2007: 115; Locock, 2008). The colours of garnet

vary significantly, from red-purple to orange-yellow, green and black, but the red-purple group is the only group documented in ancient jewellery (Arrhenius, 1985). All the garnets from Campo Marchione and Corte Bassa are red. The full analytical data of the sixty-four garnets are reported in Table S2 in the online [Supplementary Material](#) and illustrated in [Figure 3](#). The garnets can be divided into five compositional groups (I to V) based on the concentrations of calcium, magnesium, yttrium, and chromium (Calligaro & Périn, 2013, 2019) ([Figure 5a–c](#)). Most of the garnets analysed in this study belong to Indian and Ceylonese garnet groups I, II, and IIIa. Group I garnets are the best represented ($n = 49/64$), followed by group II with eight exemplars (five loose garnets, one plaque from the S-shaped brooch from Corte Bassa, one from the disc brooch from Campo Marchione, and the oval garnet of the pendant from the tomb of the woman at

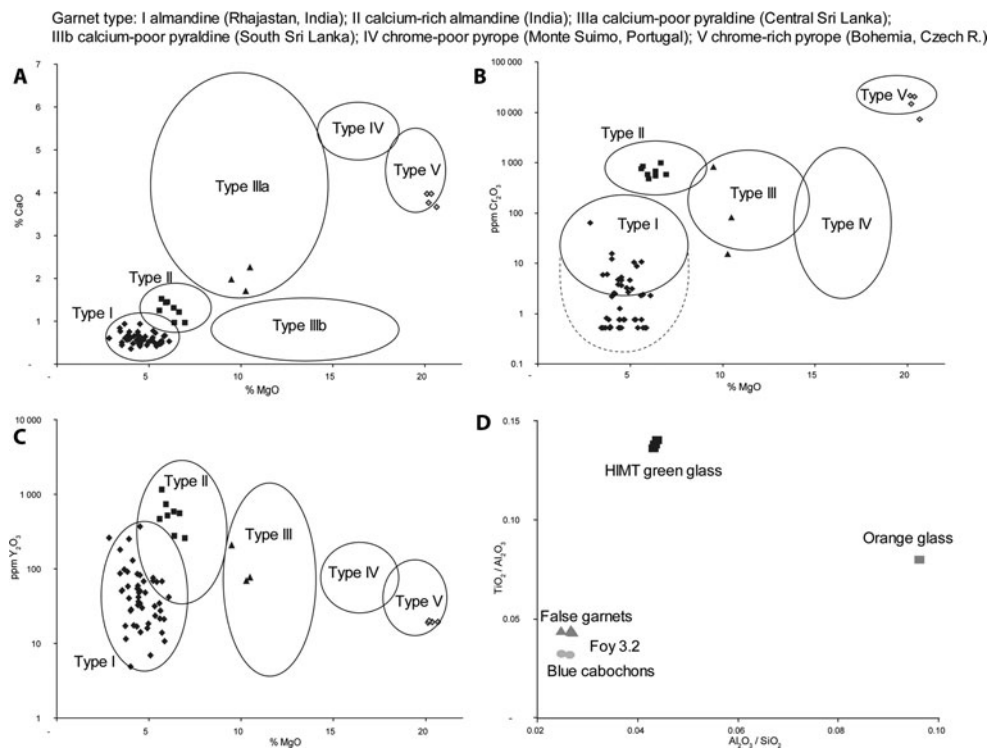


Figure 5. Compositional groupings of the garnets (A–C) and glass samples (D). For the garnets, the ellipses are drawn according to Calligaro and Périn’s (2013, 2019) classification. Some differences between LA-ICP-MS and the method used to obtain the reference data (PIXE) may explain a slight shift between our data and the reference groups.

Corte Bassa), and three of group IIIa (the bead and one plaque from the S-shaped brooch from the girl’s tomb, and one loose garnet from the woman’s tomb of Corte Bassa). Four garnets set in one of the cloisonné and filigree pendants from Corte Bassa (2013.4.005 H) are different and are consistent with Group V, which appeared around AD 600 and probably originates in the central mountains of Bohemia (Czech Republic) (Calligaro et al., 2007).

All the glass samples analysed are classified as natron glasses, according to their low (< 1.5 wt %) magnesium and potassium oxides (Sayre & Smith, 1961; Gratuze & Barrandon, 1990; Shortland et al., 2006) (see Supplementary Material, Table S2, and Figure 3). It is well established that oxide ratios of Al₂O₃ to SiO₂

and TiO₂ to Al₂O₃ characterize the provenance and date of different natron base glasses (Freestone et al., 2018). The two cabochon gems, and the four purple plaques from the garnet cache at Campo Bassa, have low aluminium, potassium, and titanium oxide contents and low to medium calcium oxide concentrations. They can be identified as a type known as Foy 3.2, a base glass produced in Egypt and dated mostly to the fourth to fifth century AD (Stojanović et al., 2015; Cholakova & Rehren, 2018; Balvanović & Šmit, 2020) (Figure 5d). The manganese content in four plaques is notably higher than in the typical Foy 3.2 composition, but this difference can be explained by an intentional addition of manganese, necessary to obtain a purple colour. The cobalt

used for the two cabochons has a high CoO/NiO ratio (55.5), typical of cobalt sources used before the end of the fourth century AD (Gratuze et al., 2018). The three translucent green plaques set in one of the gold pendants (2013.4.005 G), with high iron, manganese, and titanium oxides, belong to the late antique HIMT glass group, produced from the end of the fourth and during the fifth century in Egypt and popular across Europe (Freestone et al., 2018). The orange glass set in the pendant 2013.4.005 E differs from the rest of the glasses analysed for its high lead and copper concentrations, which are often encountered in opaque orange glass (Schibille et al., 2020, with references). Its high titanium and zirconium contents are in line with a possible Egyptian provenance.

DISCUSSION

The typological and stylistic study revealed that the garnet-inlaid jewellery from the sites of Campo Marchione and Corte Bassa is a combination of products manufactured in different workshops located in the Italian peninsula and the Merovingian area. The diverse origins reflect the multiple directions of the circulation of finished jewellery that was traded, but also exchanged in the form of gifts and passed on as heirlooms (La Rocca, 1997; Barbiera, 2012: 117–20; Hamerow, 2017: 71). This is compatible with the supra-regional character of the elites who ruled the Italian mainland between the sixth and seventh century. The South Asian provenance of the majority of the garnets is in line with the chronological trends observed in relation to medieval Europe more generally. The combination of South Asian and Bohemian garnets in the cloisonné gold pendants from Lodi Vecchio is particularly interesting, because

European garnets were previously believed to have been used exclusively as cabochon gems, given that they were not suitable for cutting as cloisonné plaques (Calligaro et al., 2007: 128). It is possible that highly specialized workshops continued to practise the cloisonné technique as late as the beginning of the seventh century, when the stocks of the larger South Asian garnets were running out.

The exclusive presence of Egyptian compositions in the glasses analysed in this study is significant, especially with respect to the Foy 3.2 group, which is extremely rare in Italy (Fiorentino et al., 2020). Foy 3.2 glass has been identified in Egyptian segmented beads retrieved from Merovingian burials (Gratuze, unpublished data), whereas it is not documented in wound beads manufactured in Europe, which are generally made with recycled Roman base glass (Boschetti et al., 2020, with references). Considering that Egypt was the major Mediterranean hub for the distribution of precious stones imported from southern Asia (Rifa-Abou El Nil & Calligaro, 2021), the Egyptian glass gems and plaques used in jewellery are most likely to be imports that travelled alongside precious stones. The presence of purple glass chips deposited with the garnet wasters from Corte Bassa can be explained by the fact that some fake stones, manufactured in Egypt, circulated with the stocks of garnets. The use of glass to forge garnet is described by Pliny the Elder (Pliny, *Natural History* 37, 25) and explains the presence of purple glass gems and plaques in cloisonné garnet jewellery from Saxon Britain (Bimson & Freestone, 2000) and Merovingian France (Calligaro et al., 2007: 115).

The cache of South Asian finished garnets and wasters in the tomb of the woman at Lodi Vecchio is particularly telling for the role the Italian peninsula played in the long-distance garnet trade.

This evidence indicates that exotic garnets were still circulating in Italy at the beginning of the seventh century. The peculiar deposition of loose garnets and wasters in British and Scandinavian burials is interpreted as a direct link between the deceased and the control of luxury goods exchanged through long-distance trade networks (Hamerow, 2017, with references). We know from anthropological evidence from lapidary workshops in present-day India that wasters are collected at the end of the work session and weighed to prevent the unauthorized sale of gems (Bhan et al., 2017). Wasters are not trade items and access to them implies a direct connection with the individuals who controlled the lapidary workshops and proximity with a centre where garnets were worked. It is therefore likely that the woman buried with the garnet cache was a member of a family directly involved in the circulation (and working) of precious stones.

The Lodi Vecchio garnet cache is unique in the Italian peninsula, but a similar interpretation can be proposed for the deposition of a block of raw amber in a female burial at Cividale at the end of the sixth century (Ahumada Silva, 2012: 37, 39, 47). Both sites are located along important long-distance routes. Cividale is close to the European terminal of the amber route that connected the Adriatic to the Baltic, while Lodi Vecchio is located on the Roman road passing Milan and leading across the Alps to reach the Rhine valley (Knobloch, 1998). The Ostrogothic fort of Monte Barro, where garnets were worked during the first half of the sixth century, is located at the beginning of the Italian Alpine section of this route. The chemical characterization of the garnets from Monte Barro is not sufficiently clear to define their provenance, but the variations of their chromium concentrations indicate that they may

belong to Asian groups II and III (Superchi et al., 2001). If the presence of a lapidary workshop in Loppio is confirmed, it will add weight to the argument that the Alpine network of fortifications played a role in the long-distance trade of exotic products.

During the sixth century, both Monte Barro and Loppio were under Byzantine influence (Brogiolo, 2008), and the Byzantines certainly controlled the commerce on the Alpine frontiers. The Crypta Balbi in Rome currently represents the southern limit of the Italian evidence for raw garnets. The available data are not sufficient to determine their provenance, but an emerald and a sapphire from the Crypta Balbi come from Egypt and Sri Lanka (or Burma), respectively, indicating that the workshop was handling exotic gems (Andreozzi et al., 1996). From the beginning of the seventh century, Rome was permanently integrated in the Byzantine administration (Delogu, 2001) and the identification of raw garnets and other exotic gems in the Crypta Balbi workshop attests to the Byzantine monopoly in the commerce of exotic products. Studies show that imports of oriental goods never ceased to reach Rome (Sagui, 2002), not even during the fifth and sixth centuries, traditionally considered a period of interrupted long-distance trade (Giannichedda et al., 2001). Egyptian wine continued to be imported via eastern Sicily, calling at the port of Syracuse before heading for Naples and then on to Marseille (Pieri, 2002; Moncada, 2018). In light of these considerations, the previously accepted model of the garnet trade network can be modified, taking into account the key role of the Italian peninsula, where garnets arrived by sea and were traded further overland and along the Rhine corridor (Figure 6). The same path was probably followed by other South Asian and Egyptian goods used in

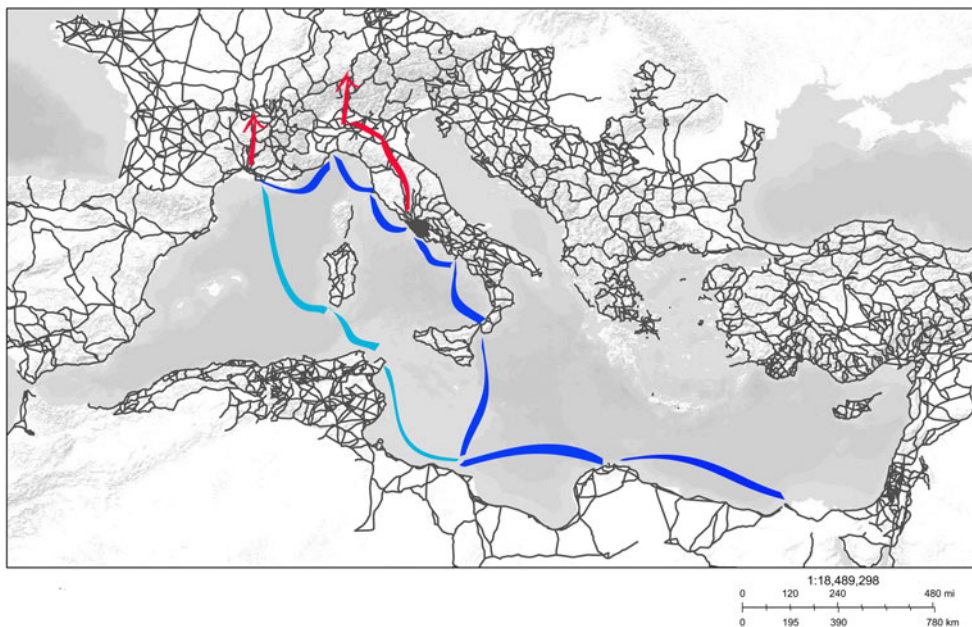


Figure 6. Map of the Mediterranean showing the Roman road network and the eastern (blue) and western (light blue) sea routes connecting Alexandria to Marseille. In red, the terrestrial routes distributing garnets in Europe, starting in Rome and Marseille (adapted from the Digital Atlas for Roman and Medieval Civilizations).

jewellery, including glass beads (Pion & Gratuze, 2016; Boschetti et al., 2020), gems and plaques, and cowrie shells (McCormick, 2001: 360). It is not surprising that all the nodes of this trade are in the territories controlled by the Byzantines, who held the monopoly over the circulation of exotic oriental imports and mastered the skills necessary to cut the precious stones.

CONCLUSIONS

During the early Middle Ages, the garnet route was more complex than previously thought. The Italian peninsula played a central role in this commerce, having direct access to Egyptian products via the sea and trading them across the Alpine roads. While the trade of finished jewellery followed circular movements, that of

precious stones followed multiple branches but, until the beginning of the seventh century, its direction was predominantly from south to north. The routes of this commerce changed significantly when European garnets replaced South Asian imports. The lapidary workshops documented in Italy are in places under Byzantine control, and the trade in precious stones, including garnets, was most probably a Byzantine monopoly. When the Po valley became part of the Lombard Kingdom, the emerging Lombard nobility were undoubtedly instrumental in controlling the goods that came from the south and were directed north over the Alpine passes (McCormick, 2001: 68). We cannot identify the woman buried with the garnet wasters at Lodi Vecchio as a member of the Byzantine or Langobard aristocracy, but the location of her grave, in a Lombard town along a road crossed

by long-distance trade, indicates how the different aristocratic groups living in the Langobard and Byzantine sectors of the peninsula participated in the trade and processing of exotic products. The deposition of finished garnets and wasters, previously documented in other European regions (Brownlee, 2021) but now also in Italy, adds a new element to the cultural diversity and global identity of European society during the seventh century AD.

ACKNOWLEDGEMENTS

This project received funding from the European Research Council (ERC) under the European Union's Horizon 2020 programme (grant no. 647315 to Nadine Schibille). The funding organization had no influence in the study design, data collection, analysis, decision to publish, or preparation of the manuscript. We acknowledge the Soprintendenza Archeologia, Belle Arti e Paesaggio per le Province di Bergamo e Brescia, the Soprintendenza Archeologia, Belle Arti e Paesaggio per le Province di Cremona, Lodi e Mantova, and especially Gabriele Barucca, Andrea Breda, Cristina Longhi, Luca Rinaldi, and Simone Sestito for their kind assistance and for allowing us to study and publish the material.

SUPPLEMENTARY MATERIAL

To view supplementary material for this article, please visit <https://doi.org/10.1017/eea.2022.25>.

REFERENCES

Adams, N. 2011. The Garnet Millennium: The Role of Sealstones in Garnet Studies. In: C. Entwistle & N. Adams, eds. *Gems*

- of Heaven: Recent Research on Engraved Gemstones in Late Antiquity c. AD 200–600*. London: The British Museum, pp. 10–24.
- Ahumada Silva, I. ed. 2012. *La collina di San Mauro a Cividale del Friuli: dalla necropoli longobarda alla chiesetta bassomedievale*. Firenze: All'Insegna del Giglio.
- Aimone, M. 2011. Nuovi dati sull'oreficeria a cloisonné in Italia fra V e VI secolo. Ricerche stilistiche, indagini tecniche, questioni cronologiche. *Archeologia Medievale*, 38: 459–506.
- Ambrosioni, A.M. & Lusuardi Siena, S. 1986. La necropoli longobarda di Trezzo sull'Adda. In: E. Roffia, ed. *La necropoli Longobarda di Trezzo sull'Adda* (Ricerche di Archeologia Altomedievale e Medievale, 12–13). Firenze: All'Insegna del Giglio, pp. 167–233.
- Andreozzi, G.B., Graziani, G. & Sagui, L. 1996. Gems from Archaeological Excavations at Rome (Crypta Balbi). *Zeitschrift der Deutschen Gemmologischen Gesellschaft*, 4: 49–72.
- Arrhenius, B. 1985. *Merovingian Garnet Jewellery: Emergence and Social Implications*. Stockholm: Almqvist & Wiskell International.
- Arslan, E. 2011. Moneta e forme di tesaurizzazione dei Longobardi e delle popolazioni romanze in Italia nel VI secolo. In: C. Ebanista & M. Rotili, eds. *Archeologia e storia delle migrazioni: Europa, Italia, Mediterraneo fra tarda età romana e alto medioevo* (Atti del Convegno internazionale di studi, Cimitile-Santa Maria Capua Vetere, 17–18 Giugno 2010). Cimitile: Tavolaro, pp. 309–37.
- Balvanović, R. & Šmit, Ž. 2020. Sixth-Century AD Glassware from Jelica, Serbia: An Increasingly Complex Picture of Late Antiquity Glass Composition. *Archaeological and Anthropological Sciences*, 12: 94. <https://doi.org/10.1007/s12520-020-01031-3>
- Barbiera, I. 2012. *Memorie sepolte. Tombe e identità nell'alto medioevo (secoli V–VIII)*. Roma: Carocci.
- Bertelli, C. & Stella, C. eds. 2001. *M'illumino d'immenso. Brescia, le Sante Croci*. Milano: Skira.
- Bhan, K.K., Kenoyer, J.M. & Vidale, M. 2017. Living Tradition: Stone Bead Production in Khambhat: An Ethnoarchaeological Approach. In: A.

- Kanungo, ed. *Stone Beads of South and Southeast Asia: Archaeology, Ethnography and Global Connections*. New Delhi: Aryan Books International, pp. 167–89.
- Bimson, M. & Freestone, I.C. 2000. Analysis of Some Glass from Anglo-Saxon Jewellery. In: M. Bimson, ed. *Glass in Britain and Ireland AD 350–1100* (British Museum Occasional Papers, 127). London: The British Museum, pp. 131–203.
- Boschetti, C., Gratuze, B. & Schibille, N. 2020. Commercial and Social Significance of Glass Beads in Migration-Period Italy: The Cemetery of Campo Marchione. *Oxford Journal of Archaeology*, 39: 319–42. <https://doi.org/10.1111/ojoa.12200>
- Brogiolo, G.P. 2008. Sistemi di difesa nell'arco alpino tra tarda antichità e alto medioevo. In: L. Daccò, ed. *Tardo antico e alto medioevo tra Lario orientale e Milano* (Atti della giornata di studi, Lecco 2006). Lecco: Musei Civici, pp. 11–22.
- Brogiolo, G.P. 2017. Un'Italia divisa tra Romani e Longobardi. In: G.P. Brogiolo, F. Marazzi & C. Giostra, eds. *Longobardi, un popolo che cambia la storia* (exhibition catalogue). Milano: Skira, pp. 44–51.
- Brownlee, E. 2021. Connectivity and Funerary Change in Early Medieval Europe. *Antiquity*, 95: 142–59. <https://doi.org/10.15184/aqy.2020.153>
- Brozzi, M. 1990. Il ducato di Forum Iulii, X.178. Pendagli in oro e pietre dalla necropoli Cella, Cividale. In: G.C. Menis, ed. *I Longobardi* (exhibition catalogue). Milano: Electa, pp. 464–65.
- Calligaro, T. & Périn, P. 2013. Route des grenats 3, Inde, Tamil Nadu, août 2013: note sur l'origine géologique des grenats utilisés par les orfèvres du haut Moyen Âge occidental. *Bulletin de liaison de l'Association française d'Archéologie mérovingienne*, 37: 125–35.
- Calligaro, T. & Périn, P. 2019. Le commerce des grenats à l'époque mérovingienne. *Archéopages Hors Série*, 5: 109–20.
- Calligaro, T., Périn, P., Vallet, F. & Poirot, J.-P. 2007. Contribution à l'étude des grenats mérovingiens (Basilique de Saint-Denis et autres collections du musée d'Archéologie nationale, diverses collections publiques et objets de fouilles récentes). *Antiquités Nationales*, 38: 111–44.
- Cannella, A.-F. 2006. *Gemmes, verre coloré, fausses pierres précieuses au Moyen Âge. Le quatrième livre du "Trésorier de Philosophie naturelle des pierres précieuses" de Jean d'Outremeuse*. Liège: Bibliothèque de la Faculté de Philosophie et Lettres de l'Université de Liège.
- Cholakova, A. & Rehren, T. 2018. A Late Antique Manganese Decolourised Glass Composition: Interpreting Patterns and Mechanisms of Distribution. In: D. Rosenow, M. Phelps, A. Meek & I. Freestone, eds. *Things that Travelled: Mediterranean Glass in the First Millennium AD*. London: UCL Press, pp. 46–71.
- Crawford, S. 2004. Votive Deposition, Religion and the Anglo-Saxon Furnished Burial Ritual. *World Archaeology*, 36: 87–102. <https://doi.org/10.1080/0043824042000192641>
- Dalceggio, M. 2017. Le fibule a disco di Castel Trosino: produzione locale o urbana? Riflessioni e spunti per una discussione. In: M. Beghelli & P.M. De Marchi, eds. *I maestri del metallo: l'intelligenza nelle mani. L'Alto medioevo. artigiani, tecniche produttive e organizzazione manifatturiera*, 2. Roma: BraDypUS, pp. 115–27.
- Dalceggio, M. 2018. *Fibule a disco di VI–VII secolo in Italia*. Roma: BraDypUS.
- Delogu, P. 2001. Roma in età bizantina. In: M.S. Arena, P. Delogu, L. Paroli, M. Ricci, L. Sagui & L. Venditelli, eds. *Roma dall'Antichità al Medioevo. Archeologia e storia nel Museo Nazionale della Crypta Balbi*. Milano: Electa, p. 251.
- De Marchi, P.M. 2001. Manufatti in metallo, osso, pietre preziose. In: G.P. Brogiolo & L. Castelletti, eds. *Archeologia a Monte Barro II: Gli scavi 1990–97 e le ricerche al S. Martino di Lecco*. Lecco: Consorzio Parco Monte Barro, pp. 173–86 and 393–98.
- Facchinetti, G. & Castagna, D. 2017. Mantova, battistero di via Rubens. In: G. P. Brogiolo, F. Marazzi, & C. Giostra, eds. *Longobardi, un popolo che cambia la storia* (exhibition catalogue). Milano: Skira, pp. 96–97 and 240–41.
- Fiorentino, S., Chinni, T. & Vandini, M. 2020. Ravenna, its Mosaics and the Contribution of Archaeometry: A Systematic Reassessment on Literature Data Related to Glass Tesserae and New Considerations. *Journal of Cultural Heritage*, 46: 335–49. <https://doi.org/10.1016/j.culher.2020.06.003>

- Freestone, I.C., Degryse, P., Lankton, J., Gratuze, B. & Schneider, J. 2018. HIMT, Glass Composition and Commodity Branding in the Primary Glass Industry. In: D. Rosenow, M. Phelps, A. Meek & I. Freestone, eds. *Things that Travelled: Mediterranean Glass in the First Millennium AD*. London: UCL Press, pp. 159–90. <https://doi.org/10.2307/j.ctt21c4tb3.14>
- Giannichedda, E., Mannoni, T. & Ricci, M. 2001. I cicli produttivi. In: M.S. Arena, P. Delogu, L. Paroli, M. Ricci, L. Sagui & L. Vendittelli, eds. *Roma dall'Antichità al Medioevo. Archeologia e storia nel Museo Nazionale della Crypta Balbi*. Milano: Electa, pp. 331–39.
- Giostra, C. 2011. La fisionomia culturale dei Longobardi in Italia settentrionale: la necropoli di Leno, Campo Marchione (Brescia). In: C. Ebanista, & M. Rotili, eds. *Archeologia e storia delle migrazioni. Europa, Italia, Mediterraneo fra tarda età romana e alto medioevo* (Atti del Convegno internazionale di studi, Cimitile-Santa Maria Capua Vetere, 17–18 Giugno 2010). Cimitile: Tavolario, pp. 255–74.
- Giostra, C. 2012. I vaghi di collana. In: S. Lusuardi Siena & C. Giostra, eds. *Archeologia medievale a Trezzo sull'Adda. Il sepolcreto longobardo e l'oratorio di San Martino. Le Chiese di Santo Stefano e San Michele in Sallianense* (Contributi di Archeologia, 5). Milano: Vita e Pensiero, pp. 255–74.
- Giostra, C. 2017. La struttura sociale nelle necropoli longobarde italiane: una lettura archeologica. In: C. Giostra, ed. *Archeologia dei Longobardi. Dati e metodi per nuovi percorsi di analisi* (Archeologia Barbarica, 1). Mantova: Società Archeologica Padana, pp. 83–112.
- Gratuze, B. 2016. Glass Characterization Using Laser Ablation-Inductively Coupled Plasma-Mass Spectrometry Methods. In: L. Dussubieux, M. Goltko & B. Gratuze, eds. *Recent Advances in Laser Ablation ICP-MS for Archaeology*. Berlin & Heidelberg: Springer, pp. 179–96. https://doi.org/10.1007/978-3-662-49894-1_12
- Gratuze, B. & Barrandon, J.-N. 1990. Islamic Glass Weights and Stamps: Analysis Using Nuclear Techniques. *Archaeometry*, 32: 155–62. <https://doi.org/10.1111/j.1475-4754.1990.tb00462.x>
- Gratuze, B., Pactat, I. & Schibille, N. 2018. Changes in the Signature of Cobalt Colorants in Late Antique and Early Islamic Glass Production. *Minerals*, 8: 225. <https://doi.org/10.3390/min8060225>
- Hamerow, H. 2017. The Circulation of Garnets in the North Sea Zone, ca. 400–700. In: A. Hilgner, S. Greiff & D. Quast, eds. *Gemstones in the First Millennium AD: Mines, Trade, Workshops and Symbolism*. Mainz: Römisch-Germanisches Zentralmuseum, pp. 71–84.
- Hamerow, H., Byard, A., Cameron, E., Düring, A., Levick, P., Marquez-Grant, N. & Shortland, A. 2015. A High-Status Seventh-Century Female Burial from West Hanney, Oxfordshire. *The Antiquaries Journal*, 95: 91–118. <https://doi.org/10.1017/S0003581514000742>
- Hilgner, A. 2018. The 'Polychrome Style' in Early Medieval Gold Ornaments: Garnet Cloisonné of the Fifth to Seventh Centuries in Europe. In: H. Eilbrach, O. Heinrich-Tamáska, B. Niemeyer, I. Reich & H.-U. Voß, eds. *Über den Glanz des Goldes und die Polychromie. Technische Vielfalt und kulturelle Bedeutung vor- und frühgeschichtlicher Metallarbeiten* (Kolloquien zur Vor- und Frühgeschichte, 24). Bonn: Rudolf Habelt, pp. 299–312.
- Horvath, E. & Bendo, Z. 2011. Provenance Study on a Collection of Loose Garnets from a Gepidic Period Grave in Northeast Hungary. *Archeometriai Műhely*, 1: 17–32.
- Jorio, S. & Ferrucci, S. 2017. Vetri d'élite: il caso di Laus. In: S. Ciappi, M.G. Diani & M. Ubaldi, eds. *Vetro e alimentazione* (Atti delle XVIII Giornate nazionali di Studio sul Vetro). Pavia: Association Internationale pour l'Histoire du Verre, pp. 161–66.
- Knobloch, R. 1998. Il sistema stradale di età romana: genesi ed evoluzione. *Insula Fulcheria*, 40: 8–29.
- Koch, U. 1990. *Das fränkische Gräberfeld von Klepsau im Hohenlohekreis*. Stuttgart: Theiss.
- La Rocca, C. 1997. Segni di distinzione. Dai corredi funerari alle donazioni "post obitum" nel regno longobardo. In: L. Paroli ed. *L'Italia centrosettentrionale in età longobarda*. Atti del Convegno, Ascoli Piceno, 6-7 ottobre 1995, Firenze, pp. 31–54.

- Ljungkvist, J., Sarén Lundahl, J. & Frölund, P. 2017. Two Workshops with Garnet Crafts in Gamla Uppsala. In: A. Hilgner, S. Greiff & D. Quast, eds. *Gemstones in the First Millennium AD: Mines, Trade, Workshops and Symbolism*. Mainz: Römisch-Germanisches Zentralmuseum, pp. 91–101.
- Locock, A.J. 2008. An Excel Spreadsheet to Recast Analyses of Garnet into End-Member Components, and a Synopsis of the Crystal Chemistry of Natural Silicate Garnets. *Computers & Geosciences*, 34: 1769–80. <https://doi.org/10.1016/j.cageo.2007.12.013>
- Martinez Jiménez, A.J. 2011. Monte Barro: An Ostrogothic Fortified Site in the Alps. *Assemblage*, 11: 34–46.
- Maurina, B. 2008. Scavi archeologici a Loppio, Isola di S. Andrea (TN). Relazione preliminare sulla prima campagna di scavo. *Annali del Museo Civico di Rovereto*, 23: 35–49.
- McCormick, M. 2001. *Origins of the European Economy: Communications and Commerce AD 300–900*. Cambridge: Cambridge University Press.
- Miazzo, L. 1999. La fibula a “S” della tomba femminile n. 152 della necropoli longobarda di Leno. In: *L'età altomedievale, Guida al Nuovo Museo di Brescia*. Brescia: Museo di Santa Giulia, pp. 64–65.
- Micheletto, E., Garanzini, F., Ugge, S. & Giostra, C. 2014. Due nuove grandi necropoli in Piemonte. In: E. Possenti, ed. *Necropoli longobarde in Italia. Indirizzi della ricerca e nuovi dati*. Trento: Castello del Buonconsiglio, monumenti e collezioni provinciali, pp. 96–117.
- Moncada, S. 2018. Le anfore orientali in Sicilia tra il V ed il VII secolo d.C.: alcune considerazioni sul commercio mediterraneo. *Pyrenae*, 49: 61–85. <https://doi.org/10.1344/Pyrenae2018.vol49num2.3>
- Muhling, J.R. & Griffin, B.J. 1991. On Recasting Garnet Analyses into End-Member Molecules – Revisited: Short Note. *Computers & Geosciences*, 17: 161–70.
- Pieri, D. 2002. Marchands orientaux dans l'économie occidentale de l'Antiquité tardive. In: L. Rivet & M. Sciallano, eds. *Vivre, produire et échanger. Reflets méditerranéens: mélanges offerts à Bernard Liou*. Montagnac: Monique Mergoïl, pp. 123–32.
- Pion, C. & Gratuze, B. 2016. Indo-Pacific Glass Beads from the Indian Subcontinent in Early Merovingian Graves (5th–6th Century AD). *Archaeological Research in Asia*, 6: 51–64. <https://doi.org/10.1016/j.ara.2016.02.005>
- Pion, C., Gratuze, B., Périn, P. & Thomas, C. 2020. Bead and Garnet Trade Between the Merovingian, Mediterranean, and Indian Worlds. In: B. Effros & I. Moreira, eds. *The Oxford Handbook of the Merovingian World*. Oxford: Oxford University Press, pp. 819–59.
- Rifa-Abou El Nil, P. & Calligaro, T. 2021. Un atelier de taille de pierre semi-précieuses à Alexandrie. In: M. Beretta, P. Bromblet, T. Calligaro & J.-Y. Empereur, eds. *Chimie et Alexandrie dans l'Antiquité*. Les Ulis: EDP Sciences, pp. 247–66. <https://doi.org/10.1051/978-2-7598-2415-1-015>
- Sagui, L. 2002. Roma, i centri privilegiati e la lunga durata nella tarda antichità. Dati archeologici da deposito di VII secolo della Crypta Balbi. *Archeologia Medievale*, 29: 7–42.
- Sayre, E.V. & Smith, R.W. 1961. Compositional Categories of Ancient Glass. *Science*, 133: 1824–26. <https://doi.org/10.1126/science.133.3467.1824>
- Schibille, N., Boschetti, C., de Juan Ares, J., Tévar, M.Á.V. & Veron, E. 2020. The Color Palette of the Mosaics in the Roman Villa of Noheda (Spain). *Minerals*, 10: 272. <https://doi.org/10.3390/min10030272>
- Shortland, A., Schachner, L., Freestone, I. & Tite, M. 2006. Natron as a Flux in the Early Vitreous Materials Industry: Sources, Beginnings, and Reasons for Decline. *Journal of Archaeological Science*, 33: 521–30. <https://doi.org/10.1016/j.jas.2005.09.011>
- Šmit, Ž., Fajfar, H., Jeršek, M., Knific, T. & Lux, J. 2014. Analysis of Garnets from the Archaeological Sites in Slovenia. *Nuclear Instruments and Methods in Physics Research Section B: Beam Interactions with Materials and Atoms*, 328: 89–94. <https://doi.org/10.1016/j.nimb.2014.02.121>
- Stern, E.M. & Schlick-Nolte, B. 1994. *Early Glass of the Ancient World, 1600 BC–AD 50: Ernesto Wolf Collection*. Ostfildern: Gerd Hatje.
- Stojanović, M.M., Šmit, Ž., Glumac, M. & Mutić, J. 2015. PIXE-PIGE Investigation

- of Roman Imperial Vessels and Window Glass from Mt Kosmaj, Serbia (Moesia Superior). *Journal of Archaeological Science Reports*, 1: 53–63. <https://doi.org/10.1016/j.jasrep.2014.11.001>
- Superchi, M., Muzzioli, D. & Valisa, P. 2001. Analisi gemmologica dei materiali ornamentali. In: G.P. Brogiolo & L. Castelletti, eds. *Archeologia a Monte Barro II. Gli scavi 1990–97 e le ricerche a S. Martino di Lecco*. Lecco: Consorzio Parco Monte Barro, pp. 187–94.
- Then-Obłuska, J., Gilg, H.A., Schüssler, U., & Wagner, B. 2021. Western Connections of Northeast Africa: The Garnet Evidence from Late Antique Nubia, Sudan. *Archaeometry*, 6: 227–46. <https://doi.org/10.1111/arc.12607>
- Tomei, A. 1999. *Evangelario di Ariberto: un capolavoro dell'oreficeria medievale lombarda*. Cinisello Balsamo: Silvana.
- Verità, M., Maggetti, M., Sagui, L. & Santopadre, P. 2013. Colors of Roman Glass: An Investigation of the Yellow Sectilia in the Gorga Collection. *Journal of Glass Studies*, 55: 39–52.

BIOGRAPHICAL NOTES

Cristina Boschetti graduated in curatorial studies and classics from the University of Parma and obtained her PhD in archaeological science from the University of Padova in 2009. She has since held post-doctoral posts at the Universities of Nottingham, Padova, and Cairo. From 2018 to 2021 she was a researcher at the CNRS Institut de Recherche sur les Archéomatériaux at the University of Orléans, on the ERC-funded project GlassRoutes (PI: Nadine Schibille). She is currently a research fellow at the Centre for Urban Network Evolution at Aarhus University. Her research interests include the economy and technology of glass from Hellenism to the early Middle Ages and Hellenistic and Roman mosaics and wall paintings, with a focus on workshop practices.

Address: IRAMAT-CEB, UMR7065, CNRS/Université d'Orléans, 3D, rue de la Férollerie, 45071 Orléans cedex 2, France. [email: cristina.boschetti@cnrs-orleans.fr]. ORCID: 0000-0003-4499-779X.

Bernard Gratuze is director of research at the French CNRS Institut de Recherche sur les Archéomatériaux at the University of Orléans. His research interests include the development of analytical protocols using laser ablation inductively coupled plasma mass spectrometry (LA-ICP-MS) for glass (as well as lithic materials) to study their production and trade from protohistory to the modern period. He studies glass-making processes and recipes from the beginning of the second millennium BC onwards, especially in transition periods (e.g. change in ash fluxes in the early first millennium BC and the late first millennium AD). With colleagues, he recently identified Indian glass bead imports in Western Europe in the fifth–sixth centuries AD.

Address: IRAMAT-CEB, UMR7065, CNRS/Université d'Orléans, 3D, rue de la Férollerie, 45071 Orléans cedex 2, France. [email: bernard.gratuze@cnrs-orleans.fr]. ORCID: 0000-0001-6136-8085.

Nadine Schibille is a senior researcher at the French CNRS Institut de Recherche sur les Archéomatériaux at the University of Orléans. She has recently completed the ERC-funded project GlassRoutes (ID: 647315) that traced Mediterranean-wide developments in the production, trade, and consumption of glass using scientific methods. Her PhD in the history of art from the University of Sussex and MSc in the scientific analysis of archaeological materials from the Institute of Archaeology at UCL enables her to apply interdisciplinary approaches to economic,

cultural, and technical developments in the medieval Mediterranean. She has published on topics from Byzantine aesthetics to glass consumption patterns in Islamic al-Andalus.

Address: IRAMAT-CEB, UMR7065, CNRS/Université d'Orléans, 3D, rue de la Férellerie, 45071 Orléans cedex 2, France. [email: nadine.schibille@cnrs-orleans.fr]. ORCID: 0000-0001-9242-0392.

Le commerce des grenats au haut Moyen Âge en Europe : le réseau italien

L'étude des routes commerciales par lesquelles les grenats atteignent l'Europe au haut Moyen Âge met en évidence la persistance de ce commerce à longue distance après la chute de l'Empire romain d'Occident. Les bijoux en grenat du haut Moyen Âge découverts en Italie et la présence d'ateliers lapidaires sont des éléments cruciaux, qui ont été longtemps négligés, pour comprendre la dynamique de ces échanges. L'analyse des éléments traces (LA-ICP-MS) des grenats et des incrustations en verre retrouvés dans des sépultures lombardes, datées du sixième au septième siècle de notre ère, a révélé la présence de verre égyptien et de grenats provenant d'Asie du Sud et de Bohême. Cette combinaison met en évidence le rôle clé des routes du commerce à longue distance traversant la péninsule et les cols alpins dans le marché européen des grenats. Ces résultats modifient considérablement le modèle actuel du commerce méditerranéen de ces gemmes et apporte un nouvel éclairage sur le caractère cosmopolite des élites qui ont émergé en Italie au cours de la période de migration. Translation by the authors

Mots-clés: haut Moyen Âge en Italie, bijoux, grenat, gemmes en verre, approvisionnement des pierres précieuses, LA-ICP-MS

Der Handel von Granaten im frühmittelalterlichen Europa: das italienische Netzwerk

Die Rekonstruktion der Handelswege, über welche die Granate im Frühmittelalter nach Europa gelangten, belegt das Fortbestehen des Fernhandels nach dem Ende des weströmischen Reiches. Der frühmittelalterliche Granatschmuck aus Italien und das Vorhandensein von Edelsteinschleifereien sind wichtige Belege für das Verständnis der Dynamik dieses Handels, wurden aber systematisch übersehen. Die Spurenelementanalyse (LA-ICP-MS) von losen und eingelegten Granaten und Glaseinlagen aus Gräbern in der Lombardei des sechsten bis siebten Jahrhunderts identifizierte sowohl südasiatische und böhmische Granate als auch ägyptisches Glas. Diese Kombination zeigt, dass die Fernhandelsrouten, die über die Halbinsel und die Alpenpässe führten, eine Schlüsselrolle auf dem europäischen Granatmarkt spielten. Diese Ergebnisse erweitern das derzeitige Modell des Granathandels im Mittelmeerraum erheblich und werfen neues Licht auf den weltoffenen Charakter der Eliten, die während der Völkerwanderungszeit in Italien aufkamen. Translation by the authors

Stichworte: Frühmittelalterliches Italien, Schmuck, Granat, Glasperlen, Edelsteinbeschaffung, LA-ICP-MS