



HAL
open science

Direct and latent effects of ocean acidification on the transition of a sea urchin from planktonic larva to benthic juvenile

Narimane Dorey, Emanuela Butera, Nadjejda Espinel-Velasco, Sam Dupont

► To cite this version:

Narimane Dorey, Emanuela Butera, Nadjejda Espinel-Velasco, Sam Dupont. Direct and latent effects of ocean acidification on the transition of a sea urchin from planktonic larva to benthic juvenile. *Scientific Reports*, 2022, 12, 10.1038/s41598-022-09537-7 . hal-03727516

HAL Id: hal-03727516

<https://hal.science/hal-03727516>

Submitted on 19 Jul 2022

HAL is a multi-disciplinary open access archive for the deposit and dissemination of scientific research documents, whether they are published or not. The documents may come from teaching and research institutions in France or abroad, or from public or private research centers.

L'archive ouverte pluridisciplinaire **HAL**, est destinée au dépôt et à la diffusion de documents scientifiques de niveau recherche, publiés ou non, émanant des établissements d'enseignement et de recherche français ou étrangers, des laboratoires publics ou privés.



OPEN

Direct and latent effects of ocean acidification on the transition of a sea urchin from planktonic larva to benthic juvenile

Narimane Dorey^{1,2,4,6}✉, Emanuela Butera^{1,6}, Nadjeđa Espinel-Velasco³ & Sam Dupont^{1,5}

Ongoing ocean acidification is expected to affect marine organisms and ecosystems. While sea urchins can tolerate a wide range of pH, this comes at a high energetic cost, and early life stages are particularly vulnerable. Information on how ocean acidification affects transitions between life-history stages is scarce. We evaluated the direct and indirect effects of pH (pH_T 8.0, 7.6 and 7.2) on the development and transition between life-history stages of the sea urchin *Strongylocentrotus droebachiensis*, from fertilization to early juvenile. Continuous exposure to low pH negatively affected larval mortality and growth. At pH 7.2, formation of the rudiment (the primordial juvenile) was delayed by two days. Larvae raised at pH 8.0 and transferred to 7.2 after competency had mortality rates five to six times lower than those kept at 8.0, indicating that pH also has a direct effect on older, competent larvae. Latent effects were visible on the larvae raised at pH 7.6: they were more successful in settling (45% at day 40 post-fertilization) and metamorphosing (30%) than larvae raised at 8.0 (17 and 1% respectively). These direct and indirect effects of ocean acidification on settlement and metamorphosis have important implications for population survival.

As a consequence of rising atmospheric anthropogenic carbon dioxide (CO₂), ocean acidification (OA) is expected to decrease the average surface ocean pH by 0.2–0.4 units by 2100^{1,2}. While open ocean pH values present small variability throughout the year, coastal systems are characterized by natural daily and seasonal pH variations³. For instance, the sampling site (Gullmarsfjord, Sweden) in the present study is characterized by a yearly variation of surface seawater pH between 8.6 and 7.6, while the average pH remains 8.1⁴. Given the intrinsic variable character of coastal ecosystems, it is expected that by 2100, the lowest pH experienced by organisms in these areas will be inferior to the projected average pH of 7.7 for open ocean⁵.

Lowered pH significantly impacts survival, development, physiology and growth in many benthic invertebrates, some of which play important roles as bioturbators or keystone species⁶. A review of 49 research articles on the effect of OA on sea urchins listed a majority (60%) of negative effects, most of them sub-lethal⁷ (see also⁸), although the observed effects appeared species, population and stage specific^{9,10}. Early-life stages seem to be particularly sensitive as OA increases metabolic rates and decreases growth rates in sea urchin larvae (e.g., for *Strongylocentrotus droebachiensis*, O.F. Müller 1776 used in this study⁴). Acidified water also affects other physiological parameters in sea urchin larvae such as acid–base regulation¹¹, feeding¹² or gene expression related to immunity¹³. One current hypothesis is that exposure to lower pH increases the energy cost to maintain vital functions, including homeostasis¹¹, leading to less energy available for growth.

Such energy limitations could induce latent shortcomings, in particular during life-stage transitions, which require major morphological and physiological changes and are often energy demanding (e.g., sea urchin¹⁴, barnacle¹⁵, abalone¹⁶). In sea urchins, embryos develop into planktotrophic pluteus larvae that eventually reach the ability to settle (i.e., competency, generally reached in 20–25 days post-fertilization at 10–12 °C in *S. droebachiensis*^{17,18}). A competent larva develops a large embryonic urchin inside its body, the rudiment. After finding

¹Department of Biological and Environmental Sciences, University of Gothenburg, The Sven Lovén Centre for Marine Science, 45178 Kristineberg, Fiskebäckskil, Sweden. ²Laboratoire de Météorologie Dynamique/IPSL, Ecole Normale Supérieure, PSL Research University, Sorbonne Université, École Polytechnique, IP, CNRS, 75005 Paris, France. ³Norwegian Polar Institute, Fram Centre, 9296 Tromsø, Norway. ⁴Laboratoire de Météorologie Dynamique/IPSL, Ecole Normale Supérieure, 24 rue Lhomond, 75005 Paris, France. ⁵International Atomic Energy Agency, Principality of Monaco, Monaco. ⁶These authors contributed equally: Narimane Dorey and Emanuela Butera. ✉email: narimane.dorey@gmail.com

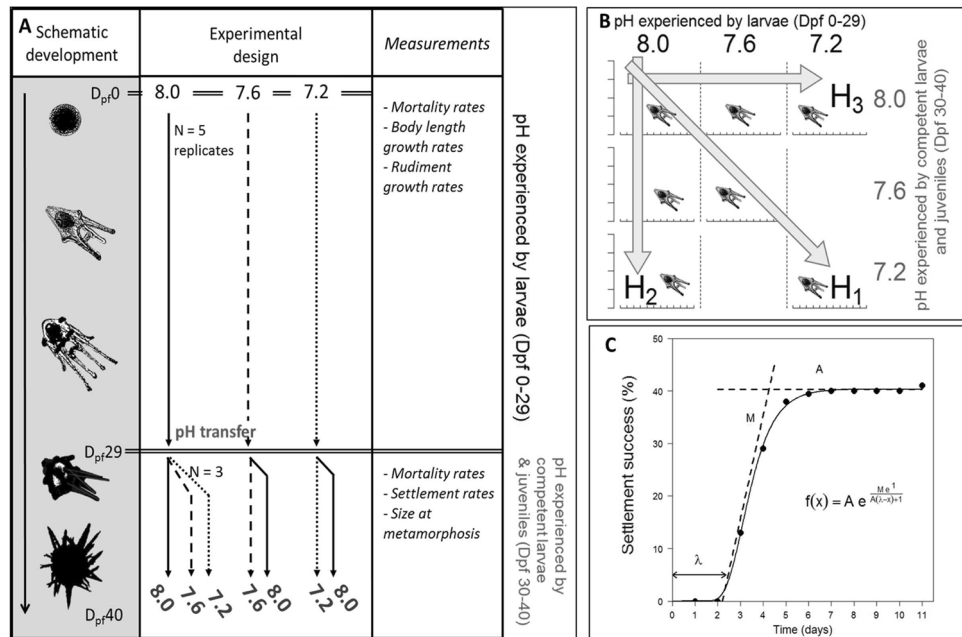


Figure 1. (A) Timeline of the experiment. The experiment started (Day post-fertilization, Dpf 0) with cleaving embryos that were distributed into five replicate jars at three different pHs (8.0, 7.6 and 7.2). At Dpf 29, larvae from three of the five replicate jars were distributed individually into wells inside three 24-well plates per new pH condition (i.e., $n=72$ larvae for each treatment). (B) Experimental design: Two parameters were tested: (i) pH experienced by larvae (Dpf 1 to 29) and (ii) pH experienced by stages from competent larvae to juveniles (Dpf 30–40). Seven combinations were tested allowing to test three different hypotheses: (H₁), continuous exposure to low pH throughout the development has a negative effect on larval, competent, newly settled and early juvenile development; (H₂), low pH experienced by competent larvae have a direct negative effect on the settlement and metamorphosis success; and, (H₃), settling individuals and metamorphosed juveniles from larvae raised under low pH are impaired relative to the ones raised under pH 8.0 (i.e., latent effect). (C) The Gompertz model used for settlement, with three descriptive parameters: maximum cumulated settlement (A; % larvae), maximum settlement rate (M; % larvae day⁻¹) and initial latency period (λ; days from Dpf 30).

suitable settlement substrate and attaching to it, full metamorphosis into a benthic juvenile can be achieved^{19–21}. While these transitions are likely to be susceptible to OA, most studies have been restricted to a single stage. There is however growing interest in investigating the effect of OA on the transitions between at least two succeeding life-history stages in invertebrates whether in sea urchins^{22,23}, sea stars^{24,25}, oysters^{26–28}, corals^{29,30} or slipper limpets³¹. In particular in sea urchins, recent studies^{32–34} have investigated how larval exposure to lowered pH influences the juvenile stages.

The aim of our study was to investigate whether pH affects the transition from a planktonic larva to a benthic juvenile in the green sea urchin *S. droebachiensis*. We tested three hypotheses to untangle direct and latent effects of pH (Fig. 1). The first hypothesis (H₁) tested whether “continuous exposure to low pH throughout the development has a negative effect on larval, newly settled and early juvenile development”. We compared responses of individuals exposed to three pHs (8.0, 7.6 and 7.2) from post-fertilization (Dpf=0, Days post-fertilization) to post-settlement/juvenile stages (Dpf=40). The second hypothesis (H₂) examined whether “low pH experienced by competent larvae have a direct negative effect on the settlement and metamorphosis success”. We then raised larvae at pH 8.0 until competency (Dpf 29) and examined the response when transferred to three pHs (8.0, 7.6 and 7.2) until post-settlement/juvenile stages (Dpf 40). The last hypothesis (H₃) tested whether “settling individuals and metamorphosed juveniles from larvae raised under low pH are impaired relative to the ones raised under pH 8.0” (i.e., latent effect). For testing H₃, we raised larvae at three different pHs (8.0, 7.6 and 7.2) until competency (Dpf 29) and measured the responses of individuals transferred to a pH of 8.0 until post-settlement/juvenile stages (Dpf 40).

Material and methods

Adult collection and maintenance. The green sea urchin *S. droebachiensis* is a calcifying species widely distributed in boreal coastal ecosystems³⁵. Adults *S. droebachiensis* were collected by divers in the Kattegat (Dröbak, Norway), transferred to the Sven Lovén Centre for Marine Sciences—Kristineberg facilities (Fiskebäckskil, Sweden) and maintained in 400-L basins with natural flowing seawater (seawater replacement: ~1 L min⁻¹), allowing a minimum volume of 10 L per individual. Sea urchins were kept at 12 °C and fed ad libitum with *Ulva* spp. for four months prior to experiments.

Spawning and fertilization. In April 2012, spawning of the adults was induced by intra-coelomic injection of 1 mL of 0.5 M KCl in filtered seawater (FSW). Eggs from four females were collected in FSW (~9 °C) while sperm from three males was collected dry and kept on ice. Sperm stock solution in FSW was subsequently added to an egg dilution to reach a final density of ~1000 sperm egg⁻¹, allowing a fertilization success above 95%. After fertilization (~15 min), eggs were rinsed twice with FSW. Cleaving embryos (two-cell stage) were placed in 5-L culture jars filled with FSW at the target pH and at a density of ten embryos per mL in continuously aerated conditions.

General experimental design. An experiment was designed to test the impact of two different types of exposure to low pH (Fig. 1A): (i) pH experienced during the first phase of the larval development prior to the development of competency (well-formed rudiment; Dpf 0 to 29), and (ii) pH experienced after the formation of the rudiment, settlement, metamorphosis, and the juvenile stage. Three pHs were compared (8.0, 7.6 and 7.2) for a total of seven combinations of treatments (Fig. 1A,B). This design allowed testing our three different hypotheses on direct and indirect effect of pH on transition from a planktonic larva to a benthic juvenile.

Larval incubation experiment (Dpf 0 to 29). Larvae were cultured in glass jars until reaching competency at 29 days post-fertilization (Dpf 29) in three pH treatments (8.0, 7.6 and 7.2, Fig. 1A), and each treatment was replicated five times. Larval and later settler cultures were maintained at a temperature of 9.04 ± 0.25 °C (mean \pm SD) and in a salinity of $\sim 32.79 \pm 0.25$.

Target pHs in the culturing vessels ($\text{pH } 7.2$ and 7.6 ± 0.02 pH units) were achieved by bubbling pure CO₂ in each bottle (pH computer AquaMedic). pH stability was visually assessed from the pH computer display at least twice a day. pH_{NBS}, temperature and total alkalinity (TA) were measured in each jar twice a week. pH was monitored using a Metrohm (827 pH lab) electrode and adjusted from pH measurements on the total scale (pH_T) using TRIS (Tris/HCl) and AMP (2-aminopyridine/HCl) buffer solutions with a salinity of 32 (provided by Unité d'Océanographie Chimique, Université de Liège, Belgium). Total alkalinity was assessed on filtered samples with a titration system (Titroline alpha plus, SI Analytics), following recommendations by Dickson et al.³⁶. The carbonate system parameters ($p\text{CO}_2$, Ω_{Ca} and Ω_{Ar}) were calculated from measured temperature, pH_T and TA using the package *seacarb*³⁷ in the software R³⁸ with default values, following recommendations by Dickson et al.³⁶ (see detailed results in supplementary information: Table S1).

From Dpf 6 to 25, larvae were fed daily with *Rhodomonas* sp. at a constant concentration of 150 µg C L⁻¹ (3000–6000 cells mL⁻¹ for diameters ranging between 6 and 8 µm). *Rhodomonas* sp. strains were provided by the Marine Algal Culture Centre of Gothenburg University (GUMACC) and maintained in B1 medium³⁹ at 20 °C under a 12:12 h light:dark cycle. Algal concentration and size were measured daily in every bottle using a Coulter counter (Elzone 5380, Micrometrics, Aachen, Germany) and concentration in each bottle was adjusted accordingly. At the chosen algal concentration (150 µg C L⁻¹) and time of exposure (24 h, algae added daily), seawater pH has no impact on algal growth and survival²³. As feeding can delay settlement and metamorphosis, feeding was stopped when a rudiment was visible (Dpf 25).

From Dpf 1 until 24, daily samples from each culture (2 × 10 mL) were fixed with 4% buffered paraformaldehyde in FSW and counted to estimate density. To account for developmental delay at low pH⁴⁰, relative mortality rates (% larvae µm⁻¹) were calculated for each replicate as the coefficient of the linear relationship between the relative density and body length rather than time. When the rates were non-significant (p -value > 0.05), the mortality was considered null. At the four-arms stage (Dpf 10–20), larval morphology was scored as normal or abnormal after His et al.⁴¹ (i.e., very strong arm asymmetry, wrong arm orientation, deformities).

Every day, ten fixed larvae were randomly selected from each culture (Dpf 1–24) and photographed under a microscope (Leica with DFC295 camera). Body length (BL) and rudiment diameter were measured using the software ImageJ 1.44p⁴². Larval growth rate was calculated for each replicate as the coefficient of the significant logarithmic relationship between BL and time. Two rudiment growth rates were calculated for each replicate as the coefficient of the significant linear relationship between rudiment diameter and (i) time post-fertilization (µm day⁻¹) and (ii) BL (µm µm_{BL}⁻¹). Only rates calculated from significant relationships were used in subsequent analyses (p -value < 0.05).

Settlement experiment (Dpf 30 to 40). At Dpf 29, larvae showed signs of competency and presented visible, large (> 100 µm) and opaque rudiments⁴³. Competent larvae were transferred to settlement conditions for 11 days (i.e., until Dpf 40, Fig. 1A). A total of two-hundred and sixteen larvae were picked from three randomly selected larval cultures at pH 8.0, measured and distributed into 24-multiwell plates previously soaked in FSW for 24 h (one larvae per 3 mL well; considered as replicate). The wells were filled with 3 mL of FSW pre-equilibrated at the target pH and temperature (~9.0 °C). Three plates were filled with FSW at pH 7.2, three with pH 7.6 and three with pH 8.0 (24 larvae × 3 plates × 3 pH treatments = 216 larvae). A similar process was used for larvae grown at 7.6 and 7.2, but larvae were only transferred to two pH treatments, either the same pH treatment or 8.0 (Fig. 1A; 24 larvae × 3 plates × 4 treatments = 288 larvae).

Each well was closed with parafilm, and the plates were kept underwater in three 4-L aquaria filled with seawater equilibrated at the target pH (controlled by AquaMedic System as described above). The FSW in each well was replaced every 48 h with water equilibrated at the same pH. Over this interval of time, the pH inside the wells was relatively stable and only changed by less than 0.17 pH units: from 8.00 to 8.06 ± 0.05 pH_T units; from 7.60 to 7.72 ± 0.12 pH_T units and from 7.20 to 7.37 ± 0.05 pH_T units ($n = 3$ measurements of pooled samples from the seawater inside the wells). No food or settlement cues were added during this settlement period.

Every day, each individual was carefully followed through microscopy and scored as post-larva, newly settled post-larva (i.e., tightly attached to the inner surface of the wells), metamorphosed juvenile or dead. Each newly

metamorphosed juvenile was photographed under a stereomicroscope (Leica MZ 16A with a DFC 420C camera) and the body diameter was measured. Relative mortality rate (% individuals day⁻¹) was calculated as per the larval experiment. The cumulative settlement (in %) followed a Gompertz growth model and was analyzed as such using the package *grofit*⁴⁴ in R. Three parameters were extracted from the model: maximum cumulated settlement (A; % larvae), maximum settlement rate (M; % larvae day⁻¹) and initial latency period (λ ; days; see Fig. 1C).

Data and statistical analyses. All the analyses were run with the software R³⁸ applying a statistical significance threshold at $\alpha = 0.05$. The normality of data distributions was checked with a Shapiro–Wilk test and homoscedasticity was tested using the Bartlett test. Results are given as mean \pm SD.

For the larval experiment, culturing jars were true replicates (Dpf 0–29). In accordance with the data distribution, one-way ANOVA, Kruskal–Wallis (KW), Wilcoxon (W) or t-test (t) were used to test the effects of the pH treatments on the carbonate chemistry and biological parameters. Pairwise comparisons using t-tests with pooled SD with a Bonferroni adjustment were applied where significant effects were found.

For the settlement experiment, a generalized linear mixed effects model (GLMM, R package *nlme*⁴⁵, function *lme*) was used to take into account a potential random effect of the plates. The effect of pH treatment, time (fixed factors) and plates (random factor) on relative mortality was tested. These GLMM were compared to GLMM without pH treatment or without time using ANOVA, to test for statistical significance of each of these factors in the original model. If models were significantly different ($p < 0.05$), model selection was done by comparing AIC (Akaike Information Criterion, higher quality model for lower AIC). A similar process was used to test for the statistical significance of the random factor: the initial GLMM was compared to a linear model without random factor (function *gls* from package *nlme*). For the proportion of settlement data, we log-transformed time before the analysis.

For the settlement experiment, we also tested the effect of pH on the three parameters (A, M and λ) extracted from the Gompertz models for each plate (ANOVA for the three Gompertz parameters, $n = 3$ data points per pH treatment). In this second analysis, time was not included as a factor as it is already included in the Gompertz model. Plates are thus considered as the replication units (and not as a random factor), and A, M and λ are analyzed with one-way ANOVA (one fixed factor: pH treatment).

Results

Carbonate chemistry conditions. During the *larval experiment* (Dpf 0 to 29), mean pH_T for each of the treatments was 8.00 ± 0.03 ($p\text{CO}_2$ of 458 ± 41 μatm , $\Omega_{\text{ar}} = 1.73 \pm 0.11$ and $\Omega_{\text{ca}} = 2.74 \pm 0.18$), 7.60 ± 0.07 ($p\text{CO}_2$ of 1262 ± 241 μatm , $\Omega_{\text{ar}} = 0.74 \pm 0.11$ and $\Omega_{\text{ca}} = 1.18 \pm 0.18$) and 7.24 ± 0.08 ($p\text{CO}_2$ of 3027 ± 685 μatm , $\Omega_{\text{ar}} = 0.33 \pm 0.05$ and $\Omega_{\text{ca}} = 0.53 \pm 0.08$; see detailed results in Table S1). pH treatments were significantly different from one another (KW: $\chi^2 = 105.9$, $df = 2$ and $p < 0.001$) and pH did not vary between replicates within each pH treatment (KW: $\chi^2 = 2.2$, $df = 4$ and $p = 0.70$ for pH 7.2; $\chi^2 = 4.5$, $df = 4$ and $p = 0.34$ for 7.6 and $\chi^2 = 7.4$, $df = 4$ and $p = 0.12$ for 8.0). Temperature (9.04 ± 0.25 °C) and TA (2321 ± 53 $\mu\text{mol kg}^{-1}$) did not vary significantly between treatments (KW; Temperature: $\chi^2 = 2.1$, $df = 2$ and $p = 0.35$; TA: $\chi^2 = 0.72$, $df = 2$ and $p = 0.70$) nor replicates (KW; Temperature: $\chi^2 = 21.1$, $df = 14$ and $p = 0.098$; TA: $\chi^2 = 11.5$, $df = 14$ and $p = 0.65$).

Larval incubation experiment (Dpf 0 to 29). During the larval incubation experiment, we followed the effect of continuously lowered pH on larval mortality and growth (H₁).

Mean larval densities at Dpf 24 were 2.0 ± 1.2 larvae mL⁻¹ at pH 7.2, 1.4 ± 1.5 larvae mL⁻¹ at pH 7.6 and 2.5 ± 3.0 larvae mL⁻¹ at pH 8.0. Larval densities in five cultures (two 7.2 replicates, one 7.6 replicate and two 8.0 replicates) were excluded from these calculations as they were too low to be recorded. Mortality rates (Dpf 0–24) were significantly higher at pH 7.2 than at pH 8.0 (0.22 ± 0.08 and $0.12 \pm 0.03\%$ larvae $\mu\text{m}_{\text{BL}}^{-1}$ respectively), while rates at 7.6 were intermediary ($0.17 \pm 0.05\%$ larvae $\mu\text{m}_{\text{BL}}^{-1}$; ANOVA: $F_{2,12} = 4.2$, $p = 0.040$; post-hoc test; Fig. 2A). At the four-arms stage (Dpf 10–20), larval abnormality was significantly higher at 7.2 than in the two other treatments (ANOVA: $F_{2,12} = 15.5$, $p = 0.005$; post-hoc test). The proportion of abnormal larvae was $14 \pm 18\%$ for pH 8.0, $8 \pm 12\%$ for pH 7.6 and $26 \pm 24\%$ for pH 7.2.

Larval body growth (Fig. 2B) was significantly lower in pH 7.2 (103 ± 25 $\mu\text{m}_{\text{BL}} \log(\text{day})^{-1}$) compared to pH 7.6 and 8.0 (141 ± 18 and 139 ± 10 $\mu\text{m}_{\text{BL}} \log(\text{day})^{-1}$ respectively; ANOVA: $F_{2,12} = 6.5$, $p = 0.012$; post-hoc test). Rudiment growth was similar in all pH treatments (12 ± 4 $\mu\text{m day}^{-1}$; ANOVA: $F_{2,9} = 0.3$, $p = 0.77$). However, the rudiment appeared two days later in 7.2 and the size of the rudiment was always lower in this treatment (KW test on each day; Fig. 2C). Rudiment size was correlated to the body length (Fig. 2D, $p < 0.0001$), albeit some dispersion ($R^2 = 39\%$), following the relationship *rudiment size* = 0.44 *body length* – 71.26.

Settlement experiment (Dpf 30 to 40). During the settlement experiment, we followed the effect of pH on competent larvae mortality, settlement, and metamorphosis success, following three hypotheses H₁, H₂ and H₃.

- a. H₁: Continuous exposure to low pH throughout the development has a negative effect on larval, competent, newly settled and early juvenile development

Mortality: For individuals maintained in the same pH treatment from larvae to settlement and metamorphosis, the pH treatment had no effect on competent larvae mortality (Fig. 3A; GLMM, models comparison: $p = 0.21$; see details in Table S2). Mean mortality rates ranged from 4.4 at pH 8.0 to 1.3% per day at pH 7.2 ($R^2 > 86\%$).

Settlement: pH treatment had no significant effect on the settlement dynamics (GLMM, models comparison: $p = 0.22$; details in Table S2). Similarly, none of the parameters of the settlement dynamics from the

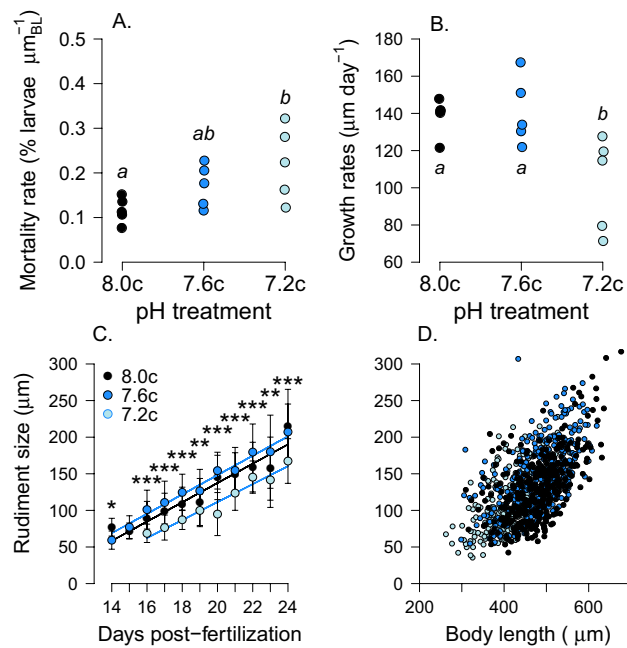


Figure 2. Effect of the pH treatments on the larval development (Dpf 1–29, H_1): (A) mortality rates (% larvae $\mu\text{m}_{\text{BL}}^{-1}$), (B) body growth rates ($\mu\text{m}_{\text{BL}} \text{day}^{-1}$) and (C) rudiment size (μm ; mean \pm SD, vs. days post-fertilization); stars represent the significance of the pH effect (KW test; ** for p -value < 0.01 , *** for p -value < 0.001 ; $n = 5$ replicates per pH treatment). (D) Rudiment size was significantly correlated to larval body size.

Gompertz model were significantly influenced by pH (Table 1). At the end of the settlement experiment, the average maximum cumulated settlement (A) was $34 \pm 14\%$ (ANOVA, $p = 0.057$; Fig. 3B); average settlement rate (M) was $12 \pm 9\% \text{day}^{-1}$ ($p = 0.18$); and the average initial latency period (λ) at the start of the settlement experiment was 2.7 ± 1.9 days ($p = 0.80$).

b. H_2 : Low pH experienced by competent larvae have a direct negative effect on the settlement and metamorphosis success

Mortality: Larvae raised at pH 8.0 and transferred to 7.2 at Dpf 30 had mortality rates five to six times lower than the ones kept at pH 8.0 or 7.6 (~ 0.9 , 5.0 and 4.4% day^{-1} for pH 7.2, 7.6 and 8.0, respectively, Fig. 3A). This direct effect of pH during the settlement period was significant (GLMM, $p = 0.0495$, Table S2).

Settlement: pH experienced by competent larvae did not significantly influence their settlement dynamic (GLMM, $p = 0.20$, Table S2) or the settlement parameters extracted from the Gompertz model (ANOVA: $p = 0.20$ for A, $p = 0.32$ for M and $p = 0.90$ for λ ; Table 1 and Fig. 3B).

c. H_3 : settling individuals and metamorphosed juveniles from larvae raised under low pH are impaired relative to the ones raised under pH 8.0 (“latent effect”)

Mortality: The pH in which larvae were raised had a significant effect on the mortality of competent larvae maintained at pH 8.0 (GLMM, $p = 0.021$, Table S2). The average mortality rates for larvae raised at pH 7.6 ($\sim 4.0\% \text{day}^{-1}$, $R^2 = 88\%$) were similar to those raised at pH 8.0 ($\sim 4.4\% \text{day}^{-1}$) but higher than those raised at 7.2 ($\sim 2.6\% \text{day}^{-1}$, $R^2 = 93\%$; Fig. 3A, Fig. S1).

Settlement: The pH in which larvae were raised had a significant effect on the settlement dynamic (GLMM, $p = 0.044$, Table S2). For example, nearly half of the individuals settled when larvae had been raised at pH 7.6 (maximum settlement, $A = 45 \pm 17\%$) when only 30 \pm 13% of the larvae raised at pH 7.2 did and 16 \pm 9% for pH 8.0 (Table 1, Fig. 3B). However, pH had no significant effect on any of the settlement parameters extracted from the Gompertz model (ANOVA: $p = 0.10$ for A, $p = 0.17$ for M and $p = 0.84$ for λ , Table 1, Fig. S2).

Metamorphosis (Dpf 30 to 40). H_1 : Individual did not metamorphose after being raised continuously at pH 8.0 and 7.2, whereas 30% did at pH 7.6 (Fig. 3C, Fig. S3). Therefore, it was not possible to test the effect of pH on the size of the newly metamorphosed individuals or the timing of metamorphosis. H_2 : Few individuals (6–10%) metamorphosed after being transferred from pH 8.0 to a lower pH (pH 7.6 or 7.2). H_3 : Larvae transferred from pH 7.6 to pH 8.0 had the highest metamorphosis success (31%), while 8% ($n = 6$) metamorphosed after being transferred from pH 7.2 to pH 8.0.

Discussion

We tested three different hypotheses related to the direct and indirect effect of seawater pH experienced during larval development, settlement, metamorphosis, and juvenile stages.

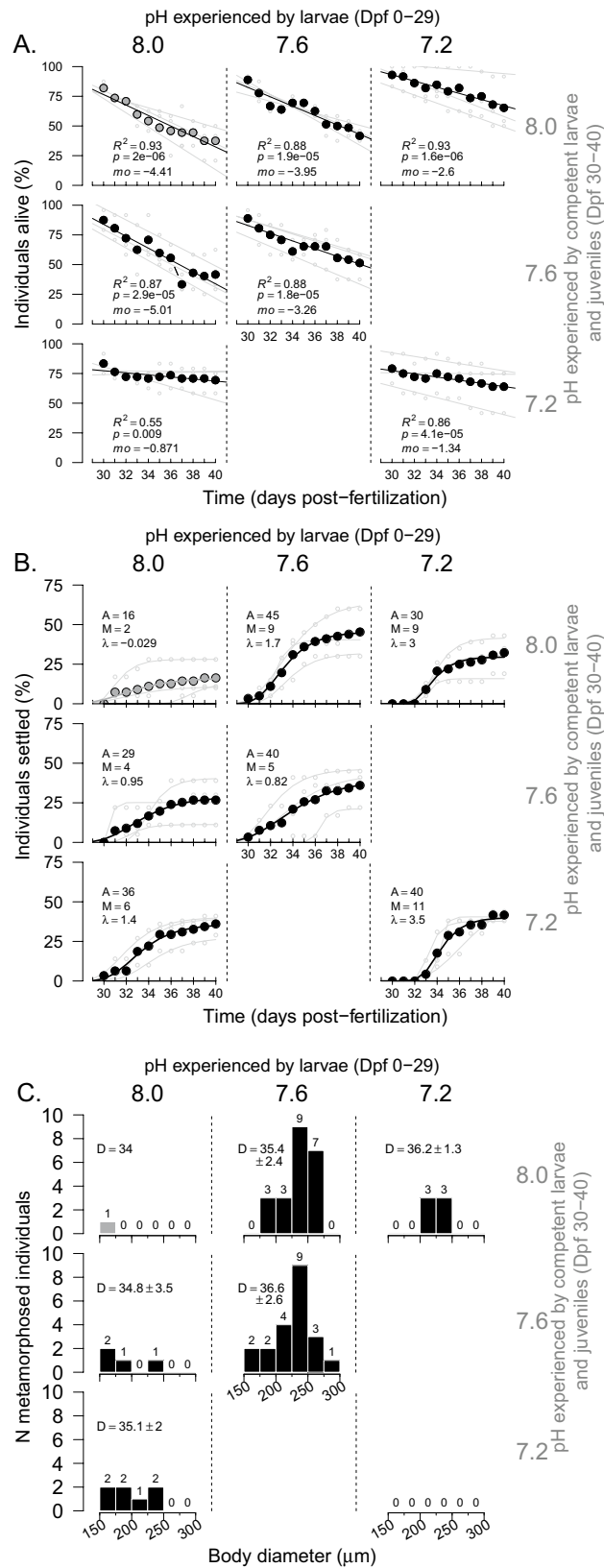


Figure 3. Effect of the combination of pH treatments on the settlement experiment (Dpf 29–40): At Dpf 29, individuals from three pH (“pH experienced by larvae”, vertical pHs) were distributed in one of three pH treatments (horizontal pHs, see Fig. 1B). Full data points represent proportions calculated on the three well-plates combined (n = 72), while light grey data points are calculated in each of the well-plates (n = 24). (A) Mortality rates (mo , % indiv. day⁻¹) were calculated as the linear relationship between survival (individuals alive, %) and days. (B) Settlement success (%) were fitted with Gompertz models (see Fig. 1B). A is the maximum cumulated settlement (% larvae), M is the maximum settlement rate (% larvae day⁻¹) and λ is the initial latency period (days). Results of the models are detailed in Table 1. (C) Distribution of the newly metamorphosed individuals by body diameter at metamorphosis (μ m). D represents the mean time (\pm SD) to metamorphosis (Dpf).

pH treatment Dpf 0–29	pH treatment Dpf 30–40	A (%)	M (% day ⁻¹)	Λ (days)
8.0	8.0	17 ± 9	5 ± 4	2.63 ± 3.79
7.6	7.6	37 ± 14	9 ± 3	2.81 ± 3.35
7.2	7.2	45 ± 10	22 ± 17	4.04 ± 0.70
7.2	8.0	29 ± 13	11 ± 2	3.14 ± 0.41
7.6	8.0	46 ± 17	12 ± 6	2.06 ± 0.52
8.0	7.2	36 ± 7	7 ± 2	1.71 ± 1.09
8.0	7.6	26 ± 15	16 ± 14	2.22 ± 1.18

Table 1. Parameters extracted from the Gompertz model by treatment (means ± SD, n = 3 plates): maximum cumulated settlement (A; % larvae), maximum settlement rate (M; % larvae day⁻¹) and initial latency period (Λ; days from d 30). The three treatments in bold were significantly different from each other.

H₁: Continuous exposure to low pH throughout the development has a negative effect on larval, newly settled and early juvenile development. *Larval development.* Larvae exposed to pH 7.2 (Dpf 0–29) presented higher mortality and abnormality rates, as well as lower growth rates than their counterparts at pH 7.6 and 8.0. In addition, rudiments developed later at the lowest pH 7.2. Growth delay and abnormalities have typically been observed in sea urchin larvae under acidified conditions (see reviews^{7,8}). In *S. droebachiensis* larvae, metabolism (respiration⁴ and feeding¹²) increased due to exposure to lowered pH. This increased metabolism—possibly due to increased/additional costs of certain physiological functions (e.g., pH regulation and digestion^{11,12,46})—could increase maintenance costs and thus reduce scope for growth^{40,47}.

A change in energy allocation could also explain the significant delay in formation of the rudiment as well as the increased mortality and abnormality at pH 7.2 during the pre-settlement period. pH-induced changes in morphology (abnormalities, asymmetry) such as those observed here could be a consequence of a disruption of one or more molecular mechanisms involved in development¹³ (e.g., growth rates, cell division). Building the rudiment requires a considerable energy investment from the larvae⁴⁸, and lowering the pH can be expected to negatively impact the subsequent transitions. Interestingly, rudiment growth rate (Fig. 2C) and size relative to larval body length was similar in all three pH conditions (Fig. 2D). The smaller rudiment observed at 7.2 at a given time can hence be attributed to the larval growth delay rather than to an additional effect of larval energy restriction on the rudiment. This result suggests that the building of the rudiment is a priority of the larval energy investment. Accordingly, Väitilinen et al.⁴⁹ reached similar conclusions as they observed a faster growth of the rudiment than of the larval body (2.3-fold) in fed competent *P. lividus* larvae.

Settlement. When competent larvae (Dpf 30–40) were exposed at settlement to the same pH as the treatment in which they had grown, pH did not have a statistically significant effect on the mortality (Fig. 3A) or the settlement parameters (cumulated settlement, rates of settlement or latency period, Fig. 3B). Comparing our results to other published studies is difficult (e.g.,^{50,51}) as different protocols were used (e.g., no inducer used in our experiment) and we defined settlement as substrate attachment while others defined settlement as the installation of settlers (no difference between settled competent larvae or juveniles). Nevertheless, and in contrast to our results, García et al.⁵⁰ observed that, in the sea urchin *P. lividus*, lowering pH induced a delay in the settlement of competent larvae by eight days at pH 7.7 (vs. 8.1), and no settlement was found at pH 7.4. However, García et al.⁵² also found that settlement in the sea urchin *P. lividus* was unaffected at reduced pH (7.7 vs. 8.1) when competent larvae were presented with a suitable algal substrate.

Metamorphosis. In our study, only one out of 72 larvae metamorphosed into juvenile when raised at pH 8.0 and none at pH 7.2. Although we observed relatively high settlement at pH 7.2 (40%), it did not result in any juveniles. This could suggest that, for individuals grown at pH 7.2 from early stages, a full metamorphosis might be too costly to achieve. However, around 30% of the competent larvae raised at pH 7.6 metamorphosed (Fig. 3C). An early settlement behavior observed at 7.6—together with increased metamorphosis success—can be interpreted in the light of the “desperate larvae hypothesis” proposed by Marshall and Keough⁵³. This hypothesis postulates that a larva in unfavorable conditions (e.g., low food concentration or, for our study, the energetically challenging low pH conditions) would settle earlier, as an alternative to a risky or costly planktonic life. Although this strategy allows escape from unfavorable planktonic conditions, it limits the probability of finding an adequate substrate for juvenile growth, hence diminishing the chances of survival after metamorphosis. Under this assumption, larvae raised at pH 8.0 would still have enough energy reserve to delay their metamorphosis and wait for a more suitable substrate. As biologically active environments that are favorable for juvenile urchins are characterized by larger variability in pH, an alternative hypothesis would be that a mild decrease in pH (e.g., 7.6 vs. 8.0) could play the role of an inducer. It must be noted that our experimental design did not include the use of natural cues for settlement such as encrusting algae, filamentous mats or marine biofilms. We believe that this could explain the low settlement success observed in larvae raised at ambient pH 40 days after fertilization (<25% settlement at pH 8.0) and that the settlement dynamics observed in our experiment may be different in the presence of such inducers⁵⁴. Because of the low number of newly metamorphosed individuals in control conditions, we were unable to test the hypothesis that lower pH decreased settlers’ size (as seen by Wangenstein et al.⁵¹), even though our preliminary data hinted at similar results (data not shown).

H₂: Low pH experienced by competent larvae have a direct negative effect on the settlement and metamorphosis success. For larvae raised in pH 8.0 until competency (Dpf 29), mortality rates were five times lower for individuals transferred to pH 7.2 as compared to those transferred to pH 8.0 or 7.6, indicating that pH also has a direct effect on older, competent larvae. Our observation on the absence of direct effects of pH 7.6 on settlement is not isolated: settlement rates of *Centrostephanus rodgersii* were unaffected when competent larvae (Dpf 40) were transferred to lowered pH³² (7.6 and 7.8 vs. 8.1; see also studies on *Evechinus chloroticus*⁵⁵ and *Pseudechinus huttoni*³⁴). In the present study, when competent larvae were transferred to lower pH, metamorphosis success increased (Fig. 3C). It is possible that competent larvae could preferentially settle and metamorphose when encountering an environment with lower pH. Sea urchin larvae settle preferably on biologically active settlement substrates such as crustose coralline algae^{54,56}. Given their photosynthesis/respiration activities, crustose coralline algae change the pH of the boundary layers leading pH variability and lower pHs than the surrounding waters³⁴. pH might potentially be used as a proxy by competent larvae to identify suitable habitats. The effect of lower pH could also be indirect through a stress associated with increased energy costs and leading to metamorphosis (aforementioned desperate larvae hypothesis).

H₃: settling individuals and metamorphosed juveniles from larvae raised under low pH are impaired relative to the ones raised under pH 8.0 (“latent effect”). For larvae grown at reduced pH until competency (Dpf 29) and subsequently transferred to pH 8.0, average mortality rates were significantly influenced by the pH experienced during early larval development. The lowest daily mortality rates were found for pH 7.2 (2.6 vs. 4.4% in pH 8.0). This could be explained by a latent effect as at Dpf 30, competent larvae raised at 7.2 were smaller and had smaller rudiments. To understand if reduced mortality at low pH stems from a developmental delay⁵⁷, future studies will need to monitor the energy reserves of competent larvae.

A latent effect was also observed for the settlement dynamics. More (45%) of the larvae raised at pH 7.6 settled compared to the other two treatments (30% for pH 7.2 and 16% for pH 8.0). This might indicate that pH 7.6 could be the optimal pH for the larval development of this species. The importance to consider the present natural variability, extreme low pH in particular, to define species sensitivity has been highlighted by Vargas et al.⁵⁸. *S. droebachiensis* spawn in spring during plankton blooms and are naturally exposed to a large pH variability ranging from 8.6 to 7.6⁴. Therefore, a pH 7.6 would be within the species tolerance level and regularly experienced by the larval stages.

While we observed “positive” latent effects, the literature principally reports negative latent post-settlement effects of lowered pH on early-post settlement growth in invertebrates (see review⁵⁹). For example, when reared at low pH (7.8) until metamorphosis and transferred to control pH conditions (8.1), oysters performed poorer (decrease in juvenile growth rates by 26%) than individuals raised at 8.1 all along²⁷, an effect that persisted for at least four months after metamorphosis²⁸. Coral recruits decreased their calcification and growth when larvae had previously been reared at low pH³⁰. While we found latent effects that increased settlement success, experiments on the same species showed that prior exposure to pH 7.6 had a negative latent effect on the post-settlement survival and growth²³. Earlier settlement at pH 7.6 may not necessarily be a “positive” latent effect for juvenile survival, with low pH having a direct impact on early juveniles test and spines^{32,34}.

Conclusion

In conclusion, our results highlight pH as an important modulator of the transition between larval and juvenile stages. Larvae raised within the present range of pH environmental variability show some plasticity in their settlement and metamorphosis pattern while larvae raised at pH 7.2 never achieved metamorphosis. This confirms the presence of a physiological tipping point below pH 7.6 for this species^{4,47}. Survival and effective recruitment of juveniles into the adult population has been seldom investigated in the context of OA and remains a black box today in the predictions of future population changes. This study highlights the potential of OA to modify the recruitment into adult populations through slower growth rates and decrease of the metamorphosis success at extreme low pH. Ocean acidification might lead to recruitment in an inhospitable environment that—in the long term—could modify urchin distributions⁶⁰ and induce effects at the ecosystem level⁶¹.

Received: 12 May 2021; Accepted: 12 January 2022

Published online: 01 April 2022

References

- Kwiatkowski, L. et al. Twenty-first century ocean warming, acidification, deoxygenation, and upper-ocean nutrient and primary production decline from CMIP6 model projections. *Biogeosciences* **17**, 3439–3470 (2020).
- Intergovernmental Panel on Climate Change. *Climate Change 2013: 5th Assessment Report of the Intergovernmental Panel on Climate Change* (Cambridge University Press, 2013).
- Torres, O., Kwiatkowski, L., Sutton, A. J., Dorey, N. & Orr, J. C. Characterizing mean and extreme diurnal variability of ocean CO₂ system variables across marine environments. *Geophys. Res. Lett.* **48**, 2 (2021).
- Dorey, N., Lançon, P., Thorndyke, M. & Dupont, S. Assessing physiological tipping point of sea urchin larvae exposed to a broad range of pH. *Glob. Change Biol.* **19**, 3355–3367 (2013).
- Hauri, C. et al. Spatiotemporal variability and long-term trends of ocean acidification in the California current system. *Biogeosci. Discuss.* **9**, 10371–10428 (2012).
- Dupont, S. & Pörtner, H.-O. A snapshot into ocean acidification research. *Mar. Biol.* **160**, 1765–1771 (2013).
- Dupont, S. & Thorndyke, M. Chapter: Direct impacts of near-future ocean acidification on sea urchins. in *Climate Change Perspective from the Atlantic: Past, Present and Future* (eds. Fernández-Palacios, J. et al.) 461–485 (2013).
- Byrne, M. & Hernández, J. C. Chapter 16: Sea urchins in a high CO₂ world: Impacts of climate warming and ocean acidification across life history stages. in *Developments in Aquaculture and Fisheries Science* vol. 43 281–297 (Elsevier, 2020).

9. Kroeker, K. J., Kordas, R. L., Crim, R. N. & Singh, G. G. Meta-analysis reveals negative yet variable effects of ocean acidification on marine organisms. *Ecol. Lett.* **13**, 1419–1434 (2010).
10. L. Kelley, A., J. Lunden, J., 1 Ocean Acidification Research Center, College of Fisheries and Ocean Sciences, University of Alaska, Fairbanks, Fairbanks, AK, 99775, USA, & 2 Haverford College, Haverford, PA, 19041, USA. Meta-analysis identifies metabolic sensitivities to ocean acidification. *AIMS Environ. Sci.* **4**, 709–729 (2017).
11. Stumpp, M. *et al.* Acidified seawater impacts sea urchin larvae pH regulatory systems relevant for calcification. *Proc. Natl. Acad. Sci. U. S. A.* **109**, 18192–18197 (2012).
12. Stumpp, M. *et al.* Digestion in sea urchin larvae impaired under ocean acidification. *Nat. Clim. Change* **3**, 1044–1049 (2013).
13. Runcie, D. E. *et al.* Genomic characterization of the evolutionary potential of the sea urchin *Strongylocentrotus droebachiensis* facing ocean acidification. *Genome Biol. Evol.* **8**, 272 (2017).
14. Sewell, M. Utilization of lipids during early development of the sea urchin *Evechinus chloroticus*. *Mar. Ecol. Prog. Ser.* **304**, 133–142 (2005).
15. Lucas, M. I., Walker, G., Holland, D. L. & Crisp, D. J. An energy budget for the free-swimming and metamorphosing larvae of *Balanus balanoides* (Crustacea: Cirripedia). *Mar. Biol.* **55**, 221–229 (1979).
16. Shilling, F. M., Hoegh-Guldberg, O. & Manahan, D. T. Sources of energy for increased metabolic demand during metamorphosis of the abalone *Haliotis rufescens* (Mollusca). *Biol. Bull.* **191**, 402–412 (1996).
17. Meidel, S. K. & Scheibling, R. E. Effects of food type and ration on reproductive maturation and growth of the sea urchin *Strongylocentrotus droebachiensis*. *Mar. Biol.* **134**, 155–166 (1999).
18. Pearce, C. M. & Scheibling, R. E. Induction of metamorphosis of larvae of the green sea urchin, *Strongylocentrotus droebachiensis* by coralline red algae. *Biol. Bull.* **179**, 304–311 (1990).
19. Gosselin, P. & Jangoux, M. From competent larva to exotrophic juvenile: a morphofunctional study of the perimetamorphic period of *Paracentrotus lividus* (Echinodermata, Echinoidea). *Zoomorphology* **118**, 31–43 (1998).
20. Hinegardner, R. T. Growth and development of the laboratory cultured sea urchin. *Biol. Bull.* **137**, 465–475 (1969).
21. Strathmann, R. R. Length of pelagic period in echinoderms with feeding larvae from the Northeast Pacific. *J. Exp. Biol. Ecol.* **34**, 23–27 (1978).
22. Byrne, M. *et al.* Unshelled abalone and corrupted urchins: Development of marine calcifiers in a changing ocean. *Proc. Biol. Sci.* **278**, 2376–2383 (2011).
23. Dupont, S., Dorey, N., Stumpp, M., Melzner, F. & Thorndyke, M. Long-term and trans-life-cycle effects of exposure to ocean acidification in the green sea urchin *Strongylocentrotus droebachiensis*. *Mar. Biol.* **160**, 1835–1843 (2013).
24. Uthicke, S. *et al.* Impacts of ocean acidification on early life-history stages and settlement of the coral-eating sea star *Acanthaster planci*. *PLoS ONE* **8**, e82938 (2013).
25. Dupont, S., Lundve, B. & Thorndyke, M. Near future ocean acidification increases growth rate of the lecithotrophic larvae and juveniles of the sea star *Crossaster papposus*. *J. Exp. Zool. Mol. Dev. Evol.* **314**, 382–389 (2010).
26. Lim, Y.-K., Dang, X. & Thiagarajan, V. Transgenerational responses to seawater pH in the edible oyster, with implications for the mariculture of the species under future ocean acidification. *Sci. Total Environ.* **782**, 146704 (2021).
27. Hettinger, A. *et al.* Persistent carry-over effects of planktonic exposure to ocean acidification in the Olympia oyster. *Ecology* **93**, 2758–2768 (2012).
28. Hettinger, A. *et al.* Larval carry-over effects from ocean acidification persist in the natural environment. *Glob. Change Biol.* <https://doi.org/10.1111/gcb.12307> (2013).
29. Albright, R. & Langdon, C. Ocean acidification impacts multiple early life history processes of the Caribbean coral *Porites astreoides*. *Glob. Change Biol.* **17**, 2478–2487 (2011).
30. Yuan, X. *et al.* Elevated CO₂ delays the early development of scleractinian coral *Acropora gemmifera*. *Sci. Rep.* **8**, 2787 (2018).
31. Maboloc, E. A. & Chan, K. Y. K. Parental whole life cycle exposure modulates progeny responses to ocean acidification in slipper limpets. *Glob. Change Biol.* **2**, 15647. <https://doi.org/10.1111/gcb.15647> (2021).
32. Mos, B., Byrne, M. & Dworjanyn, S. A. Effects of low and high pH on sea urchin settlement, implications for the use of alkali to counter the impacts of acidification. *Aquaculture* **528**, 735618 (2020).
33. Harianto, J., Aldridge, J., Torres Gabarda, S. A., Grainger, R. J. & Byrne, M. Impacts of acclimation in warm-low pH conditions on the physiology of the sea urchin *Heliocidaris erythrogramma* and carryover effects for juvenile offspring. *Front. Mar. Sci.* **7**, 588938 (2021).
34. Houlihan, E. P., Espinel-Velasco, N., Cornwall, C. E., Pilditch, C. A. & Lamare, M. D. Diffusive boundary layers and ocean acidification: Implications for sea urchin settlement and growth. *Front. Mar. Sci.* **7**, 577562 (2020).
35. Norderhaug, K. M. & Christie, H. C. Sea urchin grazing and kelp re-vegetation in the NE Atlantic. *Mar. Biol. Res.* **5**, 515–528 (2009).
36. Dickson, A., Sabine, C. L. & Christian, J. R. *Guide to best practices for ocean CO₂ measurements*. (PICES Special Publication 3;191 pp, 2007).
37. Lavigne, H. & Gattuso, J.-P. *seacarb: seawater carbonate chemistry with R. R package version 2.4*. <http://CRAN.R-project.org/package=seacarb>. (2011).
38. R Core Team. *R: A language and environment for statistical computing. R: A language and environment for statistical computing* (2017).
39. Guillard, R. R. L. & Ryther, J. H. Studies of marine planktonic diatoms. I. *Cyclotella nana* Hustedt and *Detonula confervacea* (Cleve) Gran. *Can. J. Microbiol.* **8**, 229–239 (1962).
40. Stumpp, M., Wren, J., Melzner, F., Thorndyke, M. & Dupont, S. CO₂ induced seawater acidification impacts sea urchin larval development I: Elevated metabolic rates decrease scope for growth and induce developmental delay. *Comp. Biochem. Physiol. Mol. Integr. Physiol.* **160**, 331–340 (2011).
41. His, E., Heyvang, I., Geffard, O. & De Montaudouin, X. A comparison between oyster (*Crassostrea gigas*) and sea urchin (*Paracentrotus lividus*) larval bioassays for toxicological studies. *Water Res.* **33**, 1706–1718 (1999).
42. U. S. National Institutes of Health, Bethesda, Maryland, U. *ImageJ, Rasband, W.S.*, <http://imagej.nih.gov/ij/>.
43. Smith, M. M., Cruz Smith, L., Cameron, R. A. & Urry, L. The larval stages of the sea urchin, *Strongylocentrotus purpuratus*. *J. Morphol.* **269**, 713–733 (2008).
44. Kahm, M., Hasenbrink, G., Lichtenberg-Frate, H., Ludwig, J. & Kschischo, M. grofit: Fitting Biological Growth Curves with R. *J. Stat. Softw.* **33**(7), 1–21. URL <http://www.jstatsoft.org/v33/i07/>. (2010).
45. Pinheiro, J., Bates, D., & R-core. *Package 'nlme': Linear and Nonlinear Mixed Effects Models*. Cran-R (2018).
46. Pan, T.-C.F., Applebaum, S. L. & Manahan, D. T. Experimental ocean acidification alters the allocation of metabolic energy. *Proc. Natl. Acad. Sci. U. S. A.* **112**, 4696–4701 (2015).
47. Jager, T., Ravagnan, E. & Dupont, S. Near-future ocean acidification impacts maintenance costs in sea-urchin larvae: Identification of stress factors and tipping points using a DEB modelling approach. *J. Exp. Mar. Biol. Ecol.* **474**, 11–17 (2016).
48. Hoegh-Guldberg, O. & Emllet, R. B. Energy use during the development of a lecithotrophic and a planktotrophic echinoid. *Biol. Bull.* **192**, 27–40 (1997).
49. Vaitilingam, D. *et al.* Effects of delayed metamorphosis and food rations on the perimetamorphic events in the echinoid *Paracentrotus lividus* (Lamarck, 1816) (Echinodermata). *J. Exp. Mar. Biol. Ecol.* **262**, 41–60 (2001).
50. Garcia, E., Clemente, S. & Hernández, J. C. Ocean warming ameliorates the negative effects of ocean acidification on *Paracentrotus lividus* larval development and settlement. *Mar. Environ. Res.* **110**, 61–68 (2015).

51. Wangensteen, O. S., Dupont, S., Casties, I., Turon, X. & Palacín, C. Some like it hot: Temperature and pH modulate larval development and settlement of the sea urchin *Arbacia lixula*. *J. Exp. Mar. Biol. Ecol.* **449**, 304–311 (2013).
52. García, E., Clemente, S. & Hernández, J. C. Effects of natural current pH variability on the sea urchin *Paracentrotus lividus* larvae development and settlement. *Mar. Environ. Res.* **139**, 11–18 (2018).
53. Marshall, D. J. & Keough, M. J. Variation in the dispersal potential of non-feeding invertebrate larvae: The desperate larva hypothesis and larval size. *Mar. Ecol. Prog. Ser.* **255**, 145–153 (2003).
54. Huggett, M. J., Williamson, J. E., de Nys, R., Kjelleberg, S. & Steinberg, P. D. Larval settlement of the common Australian sea urchin *Heliocidaris erythrogramma* in response to bacteria from the surface of coralline algae. *Oecologia* **149**, 604–619 (2006).
55. Espinel-Velasco, N., Agüera, A. & Lamare, M. Sea urchin larvae show resilience to ocean acidification at the time of settlement and metamorphosis. *Mar. Environ. Res.* **159**, 104977 (2020).
56. Lamare, M. & Barker, M. Settlement and recruitment of the New Zealand sea urchin *Evechinus chloroticus*. *Mar. Ecol. Prog. Ser.* **218**, 153–166 (2001).
57. Martin, S. *et al.* Early development and molecular plasticity in the Mediterranean sea urchin *Paracentrotus lividus* exposed to CO₂-driven acidification. *J. Exp. Biol.* **214**, 1357–1368 (2011).
58. Vargas, C. A. *et al.* Species-specific responses to ocean acidification should account for local adaptation and adaptive plasticity. *Nat. Ecol. Evol.* **1**, 0084 (2017).
59. Espinel-Velasco, N. *et al.* Effects of ocean acidification on the settlement and metamorphosis of marine invertebrate and fish larvae: a review. *Mar. Ecol. Prog. Ser.* **606**, 237–257 (2018).
60. Briffa, M., de la Haye, K. & Munday, P. L. High CO₂ and marine animal behaviour: potential mechanisms and ecological consequences. *Mar. Pollut. Bull.* **64**, 1519–1528 (2012).
61. Gaylord, B. *et al.* Ocean acidification through the lens of ecological theory. *Ecology* **96**, 3–15 (2015).

Acknowledgements

SD is funded by the CeMEB and supported by a Linnaeus-grant from the Swedish Research Councils VR and Formas. This work was performed within the Linnaeus Centre for Marine Evolutionary Biology, CeMEB (<http://www.cemeb.science.gu.se/>).

Author contributions

N.D. and M.B. designed and performed the experiment, the analyses and wrote the first draft. S.D. and N.E. contributed significantly to the data interpretation and writing the manuscript. N.D. provided final figures, final analyses and final draft. All authors reviewed the manuscript.

Competing interests

The authors declare no competing interests.

Additional information

Supplementary Information The online version contains supplementary material available at <https://doi.org/10.1038/s41598-022-09537-7>.

Correspondence and requests for materials should be addressed to N.D.

Reprints and permissions information is available at www.nature.com/reprints.

Publisher's note Springer Nature remains neutral with regard to jurisdictional claims in published maps and institutional affiliations.



Open Access This article is licensed under a Creative Commons Attribution 4.0 International License, which permits use, sharing, adaptation, distribution and reproduction in any medium or format, as long as you give appropriate credit to the original author(s) and the source, provide a link to the Creative Commons licence, and indicate if changes were made. The images or other third party material in this article are included in the article's Creative Commons licence, unless indicated otherwise in a credit line to the material. If material is not included in the article's Creative Commons licence and your intended use is not permitted by statutory regulation or exceeds the permitted use, you will need to obtain permission directly from the copyright holder. To view a copy of this licence, visit <http://creativecommons.org/licenses/by/4.0/>.

© The Author(s) 2022