



**HAL**  
open science

## High-Flow Versus VenturiMask Oxygen Therapy to Prevent Re-Intubation in Hypoxemic Patients After Extubation: A Multicenter, Randomized Clinical Trial

Salvatore Maurizio Maggiore, Samir Jaber, Domenico Luca Grieco, Jordi Mancebo, Spyros Zakyntinos, Alexandre Demoule, Jean-Damien Ricard, Paolo Navalesi, Rosanna Vaschetto, Sami Hraiech, et al.

### ► To cite this version:

Salvatore Maurizio Maggiore, Samir Jaber, Domenico Luca Grieco, Jordi Mancebo, Spyros Zakyntinos, et al.. High-Flow Versus VenturiMask Oxygen Therapy to Prevent Re-Intubation in Hypoxemic Patients After Extubation: A Multicenter, Randomized Clinical Trial. *American Journal of Respiratory and Critical Care Medicine*, 2022, 106 (12), pp.1452-1462. 10.1164/rccm.202201-0065OC . hal-03727232

**HAL Id: hal-03727232**

**<https://hal.science/hal-03727232>**

Submitted on 25 Jun 2023

**HAL** is a multi-disciplinary open access archive for the deposit and dissemination of scientific research documents, whether they are published or not. The documents may come from teaching and research institutions in France or abroad, or from public or private research centers.

L'archive ouverte pluridisciplinaire **HAL**, est destinée au dépôt et à la diffusion de documents scientifiques de niveau recherche, publiés ou non, émanant des établissements d'enseignement et de recherche français ou étrangers, des laboratoires publics ou privés.



Distributed under a Creative Commons Attribution - NonCommercial - NoDerivatives 4.0 International License

# **High-Flow Versus VenturiMask Oxygen Therapy to Prevent Reintubation in Hypoxemic Patients after Extubation A Multicenter Randomized Clinical Trial**

Salvatore Maurizio Maggiore<sup>1,2</sup>, Samir Jaber<sup>3,4</sup>, Domenico Luca Grieco<sup>5</sup>, Jordi Mancebo<sup>6</sup>, Spyros Zakyntinos<sup>7</sup>, Alexandre Demoule<sup>8,9</sup>, Jean-Damien Ricard<sup>10</sup>, Paolo Navalesi<sup>11</sup>, Rosanna Vaschetto<sup>12,13</sup>, Sami Hraiech<sup>14</sup>, Kada Klouche<sup>15,16</sup>, Jean-Pierre Frat<sup>17,18</sup>, Virginie Lemiale<sup>19</sup>, Vito Fanelli<sup>20,21</sup>, Gerald Chanques<sup>3,4</sup>, Daniele Natalini<sup>4</sup>, Eleni Ischaki<sup>6</sup>, Danielle Reuter<sup>8,9</sup>, Indalecio Moran<sup>5</sup>, Béatrice La Combe<sup>8</sup>, Federico Longhini<sup>22</sup>, Andrea De Gaetano<sup>23,24</sup>, V. Marco Ranieri<sup>25</sup>, Laurent J. Brochard<sup>26,27</sup>, Massimo Antonelli<sup>4</sup>, and the RINO Trial Study Group

1 University Department of Innovative Technologies in Medicine and Dentistry, Gabriele d'Annunzio University of Chieti-Pescara, Chieti, Italy;

2 Department of Anesthesiology, Critical Care Medicine, and Emergency, SS Annunziata Hospital, Chieti, Italy;

3 Department of Anesthesia and Intensive Care Unit, Regional University Hospital of Montpellier, St-Eloi Hospital, University of Montpellier, Montpellier; France,

4 PhyMedExp, INSERM U1046, CNRS UMR, 9214, University of Montpellier, Montpellier Cedex 5, France;

5 Department of Anesthesiology and Intensive Care Medicine, Fondazione Policlinico Universitario A. Gemelli IRCCS, Catholic University of The Sacred Heart, Rome, Italy;

6 Servei de Medicina Intensiva, Hospital Universitari de la Santa Creu i Sant Pau, Barcelona, Spain;

7 Department of Intensive Care Medicine, National and Kapodistrian University of Athens Medical School, Evaggelismos General Hospital, Athens, Greece;

8 Service de Pneumologie, Médecine Intensive–Réanimation (Département “R3S”), Hôpital Pitié-Salpêtrière, Sorbonne Université, AP-HP, Paris, France;

9 INSERM, UMRS1158 Neurophysiologie Respiratoire Expérimentale et Clinique, Sorbonne Université, Paris, France;

10 Service de Médecine Intensive-Réanimation, DMU ESPRIT, Hôpital Louis Mourier, AP-HP, Université de Paris, Colombes, France;

11 Anesthesia and Intensive Care Unit, Department of Medicine, University of Padua, Padua, Italy;

12 Dipartimento di Medicina Traslazionale, Università del Piemonte Orientale, Novara, Italy;

13 Azienda Ospedaliero-Universitaria Maggiore della Novara, Italy;

14 Service de Médecine Intensive – Réanimation, AP-HM, Hôpital Nord, Aix-Marseille Université, Health Service Research and Quality of Life Center (CEReSS), Marseille, France;

15 Intensive Care Medicine Department, Lapeyronie Hospital, Montpellier University Hospital, Montpellier, France;

16 PhyMedExp, INSERM, CNRS, University of Montpellier, Montpellier, France;

17 Médecine Intensive Réanimation, CHU Poitiers, INSERM, CIC 1402, ALIVE, Université de Poitiers, Poitiers, France;

18 INSERM, CIC 1402, ALIVE, Université de Poitiers, Poitiers, France;

19 Medical ICU, AP-HP Saint Louis, Paris, France;

20 Department of Surgical Sciences, University of Turin, Turin, Italy;

21 Department of Anaesthesia, Critical Care, and Emergency, Citta della Salute e della Scienza Hospital, Turin, Italy;

22 Anesthesia and Intensive Care Unit, Department of Medical and Surgical Sciences, “Mater Domini” University Hospital, “MagnaGraecia” University, Catanzaro, Italy;

23 CNR-IASI, Rome, Italy; 24 CNR-IRIB, Palermo, Italy;

25 Dipartimento di Scienze Mediche e Chirurgiche, Anestesia e Rianimazione, Policlinico di Sant’Orsola, AlmaMater Studiorum-Universita di Bologna, Bologna, Italy;

26 Keenan Centre for Biomedical Research, Li Ka Shing Knowledge Institute, St. Michael’s Hospital, Toronto, Ontario, Canada; and

27 Interdepartmental Division of Critical Care Medicine, University of Toronto, Toronto, Ontario, Canada

**Clinical trial** registered with [www.clinicaltrials.gov](http://www.clinicaltrials.gov) (NCT02107183).

**Keywords:**

weaning; oxygen therapy; nasal high-flow oxygen; acute respiratory failure; noninvasive ventilation

**Correspondence and requests for reprints** should be addressed to Salvatore Maurizio Maggiore, M.D., Ph.D., Department of Anesthesiology and Critical Care Medicine, Annunziata University Hospital, Via dei Vestini SNC, 66100 Chieti, Italy.

**E-mail:** [salvatore.maggiore@unich.it](mailto:salvatore.maggiore@unich.it).



# Abstract

## Rationale:

When compared with VenturiMask after extubation, high-flow nasal oxygen provides physiological advantages.

## Objectives:

To establish whether high-flow oxygen prevents endotracheal reintubation in hypoxemic patients after extubation, compared with VenturiMask.

## Methods:

In this multicenter randomized trial, 494 patients exhibiting PaO<sub>2</sub>:FIO<sub>2</sub> ratio < 300 mm Hg after extubation were randomly assigned to receive high-flow or VenturiMask oxygen, with the possibility to apply rescue noninvasive ventilation before reintubation. High-flow use in the VenturiMask group was not permitted.

## Measurements and Main Results:

The primary outcome was the rate of reintubation within 72 hours according to predefined criteria, which were validated a posteriori by an independent adjudication committee. Main secondary outcomes included reintubation rate at 28 days and the need for rescue noninvasive ventilation according to predefined criteria. After intubation criteria validation (n = 492 patients), 32 patients (13%) in the high-flow group and 27 patients (11%) in the VenturiMask group required reintubation at 72 hours (unadjusted odds ratio, 1.26 [95% confidence interval (CI), 0.70–2.26]; P = 0.49). At 28 days, the rate of reintubation was 21% in the high-flow group and 23% in the VenturiMask group (adjusted hazard ratio, 0.89 [95% CI, 0.60–1.31]; P = 0.55). The need for rescue noninvasive ventilation was significantly lower in the high-flow group than in the VenturiMask group: at 72 hours, 8% versus 17% (adjusted hazard ratio, 0.39 [95% CI, 0.22–0.71]; P = 0.002) and at 28 days, 12% versus 21% (adjusted hazard ratio, 0.52 [95% CI, 0.32–0.83]; P = 0.007).

## Conclusions:

Reintubation rate did not significantly differ between patients treated with VenturiMask or high-flow oxygen after extubation. High-flow oxygen yielded less frequent use of rescue noninvasive ventilation.

---

In mechanically ventilated patients recovering from respiratory failure, extubation is performed when the acute phase of the disease has resolved and predetermined criteria are met, but it is not always successful (1, 2). Reintubation is needed in around 15% of cases and is associated with increased risk of complications and worse mortality (3–5). Treatment of postextubation hypoxemia is essential in such a context, with oxygen therapy commonly administered to improve oxygen delivery (6, 7).

In the ICU, high-flow nasal oxygen has been tested as first-line treatment in patients experiencing acute hypoxemic respiratory failure, for preoxygenation during endotracheal intubation, and to facilitate weaning from mechanical ventilation, with promising results (8–14).

High-flow nasal oxygen appears as effective as noninvasive ventilation in patients experiencing or at high risk of respiratory failure after extubation (15, 16) and preemptive nasal high-flow oxygen, compared with low-flow oxygen, has been shown to prevent reintubation among critically ill patients at low risk of reintubation (17, 18).

VenturiMasks provide gas mixture at higher flows than the low-flow devices used for oxygen therapy as control treatments in previous randomized studies. We previously demonstrated that, compared with VenturiMask after extubation in hypoxemic patients recovering from respiratory failure, high-flow nasal oxygen improves oxygenation and reduces PaCO<sub>2</sub>, respiratory rate, and discomfort (19). Whether these physiological benefits translate into improved extubation weaning outcome remains to be established.

We conducted a multicenter, randomized trial to determine whether high-flow nasal oxygen may reduce the reintubation rate of critically ill patients experiencing hypoxemia after extubation, compared with VenturiMask oxygen therapy.

## **Methods**

### **Study Design**

The RINO(Reintubation Rate after Oxygen Therapy: Impact of Nasal High-Flow versus VenturiMask Oxygen Therapy on Weaning Outcome) trial is an investigator-initiated, multicenter, randomized, two-arm, open-label study conducted between June 2014 and October 2016 in 13 ICUs in Italy (4), France (7), Spain (1), and Greece (1). The study was sponsored by Fisher and Paykel Healthcare (New Zealand). The investigators and the sponsor had access to patients' data. Statistical analysis was conducted independently of the sponsor (see Statistical Analysis section). All sites had experience with the use of both VenturiMasks and high-flow nasal oxygen. The institutional review board of the coordinator center (Catholic University of The Sacred Heart, Fondazione Policlinico Universitario A. Gemelli IRCCS, Rome, Italy) reviewed and approved the study protocol before trial initiation (no. 12634/13 on December 5, 2013). By in-site beginning of enrollment, each local ethics committee reviewed and approved the study protocol. Each enrolled patient or next of kin provided written informed consent to participate in the trial. The study was conducted in accordance with the declaration of Helsinki and was registered on April 8, 2014 on [www.clinicaltrials.gov](http://www.clinicaltrials.gov) (NCT02107183).

### **Participants**

All adult intubated patients mechanically ventilated for at least 48 hours in the ICU and eligible for undergoing a spontaneous breathing trial were eligible for enrollment.

To avoid delays in the administration of study treatments, written informed consent to study participation was preferentially obtained before spontaneous breathing trial or immediately after extubation.

Readiness to undergo a spontaneous breathing trial was defined by the presence of the following criteria (1, 20):

- \_ improvement or resolution of the underlying cause of acute respiratory failure;
- \_ normal sensorium (alertness and ability to communicate);
- \_ correction of arterial hypoxemia ( $\text{PaO}_2 > 60$  mm Hg at a  $\text{FIO}_2 < 40\%$  with positive end-expiratory pressure  $< 5$  cmH<sub>2</sub>O);
- \_ absence of fever ( $> 38^\circ\text{C}$ ) or sepsis;
- \_ blood hemoglobin concentration  $> 7$  g/dl;
- \_ hemodynamic stability without cardiac ischemia or arrhythmias.

The spontaneous breathing trial was conducted in both groups according to clinical practice at each center. Failure or success was defined according to predetermined criteria (see online supplement E1) (1). In failing patients, mechanical ventilation was resumed with settings provided by the attending physician, and new spontaneous breathing trials were performed on a daily basis whether the predefined criteria were met. Succeeding patients were extubated and received oxygen therapy via VenturiMask (OS/60K, FIAB), with  $\text{FIO}_2 = 31\%$  and oxygen flow set according to manufacturer's recommendation (8 L/min).

Patients were considered eligible for inclusion in the study if they showed hypoxemia within 120 minutes after extubation. Hypoxemia was assessed during oxygen therapy via VenturiMask 31% and was defined by  $\text{PaO}_2 : \text{FIO}_2 < 300$  mmHg or by a peripheral oxygen saturation ( $\text{SpO}_2$ ) to nominal  $\text{FIO}_2$  ratio  $< 300\%$  (with  $\text{SpO}_2 > 98\%$ ) (21).

The exclusion criteria were the presence of a tracheostomy, pregnancy, and the need for prophylactic noninvasive ventilation immediately after extubation, according to the following predetermined criteria (20, 22, 23): 1) more than three consecutive failures of a spontaneous breathing trial; 2)  $\text{PaCO}_2 > 45$  mmHg with respiratory rate  $> 25$  breaths/min before the spontaneous breathing trial.

Inclusion of patients with compensated hypercapnia (i.e.,  $\text{PaCO}_2 > 45$  mmHg with  $\text{pH} > 7.35$ ) without objective signs of respiratory distress during the spontaneous breathing trial (no use of accessory muscles and respiratory rate  $> 25$  breaths/min) was permitted.

## **Procedures**

Enrolled patients were randomized in a 1:1 ratio to receive VenturiMask or high-flow nasal oxygen.

Randomization was performed within 120 minutes after extubation, immediately after the oxygenation criterion validation. A computer-generated randomization scheme managed by a centralized web-based system allocated patients to each group. Randomization was stratified according to the cause of ICU admission (medical vs. surgical or trauma), age ( $< 65$  vs.  $\geq 65$  yr), and the presence of hypercapnia at inclusion ( $\text{PaCO}_2 < 45$  mmHg vs.  $\geq 45$  mmHg).

## **At a Glance Commentary**

### **Scientific Knowledge on the**

**Subject:** Weaning from mechanical ventilation and extubation are critical procedures in mechanically ventilated patients, as weaning failure and reintubation occur in up to 10–30% of cases and are associated with increased mortality. In one randomized trial, preemptive high-flow nasal oxygen, as compared to low-flow oxygen, has been shown to prevent reintubation among critically ill patients at low risk of weaning failure. The use of noninvasive ventilation was rigorously discouraged in both groups, despite some evidence indicating that its use among selected patients may prevent reintubation when oxygen therapy fails. VenturiMasks provide gas mixture at higher flows than the low-flow devices used for oxygen therapy as control treatment in that study. Compared to VenturiMask after extubation in hypoxemic patients, high-flow nasal oxygen provides physiological advantages. Whether these physiological benefits translate into improved weaning outcome remains to be established.

### **What This Study Adds to the**

**Field:** In this open-label randomized trial, 494 patients with hypoxemia after extubation were randomly assigned to receive high-flow nasal or VenturiMask oxygen, with the possibility to apply rescue noninvasive ventilation before reintubation. We found that reintubation rate at 72 hours and 28 days did not significantly differ between groups. Use of high-flow nasal oxygen yielded to less frequent use of rescue noninvasive ventilation.



Patients had to undergo the allocated treatment within 120 minutes from the time of extubation. Patients received oxygen through VenturiMask (OS/60K, FIAB) or high-flow nasal oxygen with the Optiflow system (Fisher and Paykel). In both groups, set FIO<sub>2</sub> was titrated to maintain a SpO<sub>2</sub> between 92% and 98%, or between 88% and 95% in hypercapnic patients, for the entire study period.

In patients receiving high-flow nasal oxygen, gas flow rate was initially set at the highest value (50–60 L/min) and eventually diminished in case of intolerance; the temperature of the heated humidifier (Fisher and Paykel Healthcare) was set at 37°C (absolute humidity delivered 44 mg H<sub>2</sub>O/L) and then eventually reduced to enhance patient comfort (24).

Among patients receiving VenturiMask, oxygen was passively humidified and pure oxygen flow was set depending on the nominal FIO<sub>2</sub>, as stated by manufacturer's recommendation. FIO<sub>2</sub> was continuously titrated to obtain the SpO<sub>2</sub> target. No crossover to high-flow nasal oxygen was allowed in the VenturiMask group.

In the high-flow group, weaning from the device could be attempted after 12 hours, if set FIO<sub>2</sub> was 40% and patient's respiratory rate was 25 breaths/min. Readiness to tolerate high-flow nasal oxygen discontinuation was established by progressively (steps of 10 L/min) lowering gas flow to 10 L/min, while keeping FIO<sub>2</sub> unchanged. Intolerance to flow decrease was defined as persistent (.5 min) drop in the SpO<sub>2</sub> 3% or 92% (88% in hypercapnic patients), and/or an increase in respiratory rate 20% or 25 breaths/min at any time during this procedure. Conversely, weaning was considered successful if SpO<sub>2</sub> remained 92% (or 88% in hypercapnic patients) and the respiratory rate 25 breaths/min while the patient was receiving nasal flow of 10 L/min for 30 minutes. In this latter case, high-flow nasal oxygen could be replaced by the VenturiMask; otherwise, the treatment was continued. In patients who were successfully weaned from high-flow nasal oxygen, the treatment could be resumed at any time in case of SpO<sub>2</sub> 92%, respiratory rate 25 breaths/min, presence of respiratory distress, and/or according to the prescription of the attending physician. At ICU discharge, all enrolled patients still requiring oxygen administration received oxygen therapy with VenturiMask.

In both arms, standard care, which included respiratory physiotherapy, was delivered according to the clinical practice of each institution.

### **Treatment Failure**

Extubation failure was defined as the need for endotracheal reintubation within 72 hours after extubation and before discharge from the ICU. To avoid any delay in reintubation and to standardize treatments in both groups, the decision to intubate was based on predefined criteria, that included the presence of unbearable dyspnea and at least one of the following (8, 25–27):

- \_ hypercapnia with respiratory acidosis (arterial pH < 7.25 with PaCO<sub>2</sub> 45 mm Hg);
- \_ changes in mental status, making nursing care impossible and requiring sedation;
- \_ SpO<sub>2</sub> 85% or PaO<sub>2</sub> 45 mm Hg despite oxygen therapy with FIO<sub>2</sub> 50%;
- \_ hypotension, with a systolic blood pressure 70 mm Hg for .30 minutes despite fluid resuscitation and/or use of vasopressors;

\_ copious secretions that were not adequately cleared or that were associated with acidosis, hypoxemia, or changes in mental status;

\_ intolerance to rescue noninvasive ventilation.

All the reasons for reintubation were recorded.

Among patients experiencing respiratory failure during the assigned treatment, a trial of rescue noninvasive ventilation before reintubation was allowed in both arms, if predetermined criteria were met (supplement E2). Noninvasive ventilation settings and interfaces were chosen by the attending physician.

Given that the final decision to reintubate was made by the attending physician who could not be blinded to study treatments, an adjudication committee reviewed a posteriori (blindly to assigned treatments) the records of all intubated patients to ascertain that the decision to intubate was unbiased and in accordance with the criteria of the protocol. The adjudication committee consisted of three clinicians with expertise in the field (F. Roche Campo, J.-C. M. Richard, and A. Mercat), who were not involved in the study.

## **Measurements**

All data were recorded on the electronic case report form and managed by a centralized web system (data manager: Ferrario Dati). Patient demographics were collected at study entry, together with the Simplified Acute Physiologic Score II (SAPSII), the main comorbidities, the cause and length of ICU stay, the reason and duration of invasive mechanical ventilation, the Sequential Organ Failure Assessment (SOFA) score on the day of enrollment, and the physiological parameters certifying the successful spontaneous breathing trial and the oxygenation criterion needed for inclusion in the study.

Daily arterial blood gases and the episodes of oxygen desaturation (defined as SpO<sub>2</sub><92%) were collected; arterial blood gas analysis was performed before noninvasive ventilation initiation or reintubation in all failing patients to certify the fulfillment of the required criteria.

## **Outcomes**

The primary outcome was the rate of endotracheal reintubation within 72 hours from randomization and before ICU discharge in the modified intention-to-treat population, which included all intubated patients but those for whom the reasons of reintubation were not deemed adherent to the predefined criteria by the adjudication committee. Secondary endpoints included: the rate of endotracheal reintubation within 72 hours in the intention-to-treat population, need for endotracheal intubation up to 28 days from randomization, need for noninvasive ventilation within 72 hours and up to 28 days from enrollment, length of ICU and hospital length of stay, the need for ICU readmission, and ICU and in-hospital mortality. Safety endpoints included the time from randomization to endotracheal reintubation, the incidence of the prespecified events leading to reintubation, and rescue noninvasive ventilation use. Exploratory outcomes included ventilatorfree days on a 28-day basis, the number of episodes of hypoxemia per patient (SpO<sub>2</sub><90%) during the assigned treatments, and 90-day mortality. Moreover, to handle the effect of the competing risk of death on the

endotracheal reintubation rate, we report a post hoc exploratory composite outcome including in-hospital reintubation or death without reintubation.

All endpoints except for the primary outcome measure were analyzed on an intention-to-treat basis.

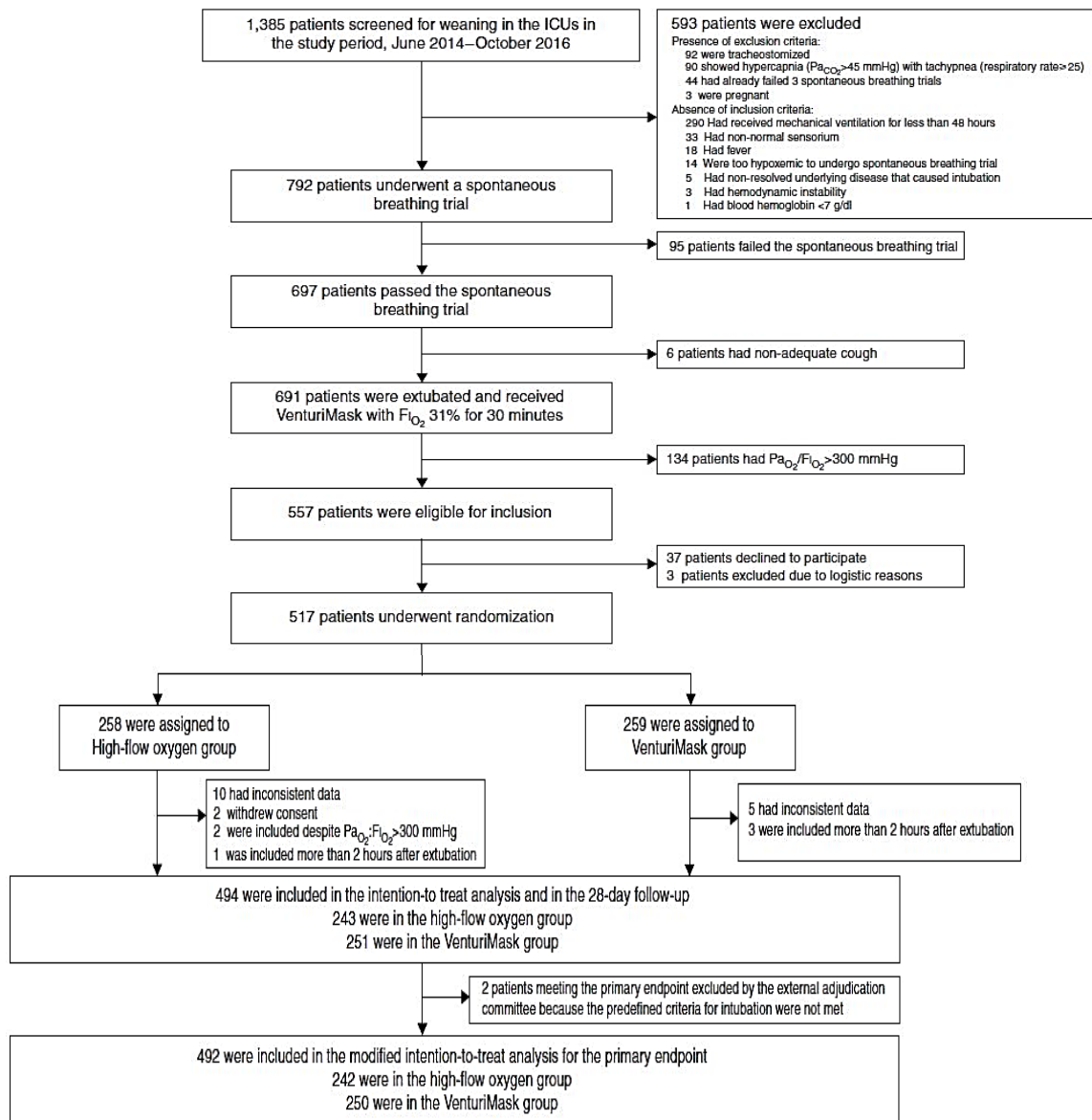
## **Statistical Analysis**

Previous data indicate that the reintubation rate in hypoxemic patients receiving VenturiMask after extubation is 18% (19). We calculated that the enrollment of 225 patients per group (total: 450 patients) would provide an 80% power to detect a 9% absolute reduction in the rate of the primary outcome in high-flow nasal oxygen group, with an  $\alpha$  of 0.05. Enrollment of 500 patients was foreseen to take into account a 10% attrition rate due to protocol violations, absence of objective criteria to define the primary endpoint, crossover, and drop-outs.

All data are displayed as frequencies, means (SD), or medians (interquartile range [IQR]), as appropriate, and tabulated descriptively by study group. Analysis on the primary endpoint and on categorical secondary endpoints was performed using a Fisher exact test. Kaplan-Meier survival analyses regarding the time to reintubation and time to the need for rescue noninvasive ventilation in the two groups were performed: the graphical representation shows no evidence against the assumption of proportionality. Ordinal qualitative variables or non-normal quantitative variables were compared with the Wilcoxon sum of ranks (Mann-Whitney U) test, and results are displayed as medians (IQR). Quantitative normal variables were compared with the Student's t test, and results are displayed as means $\pm$ SD.

Multivariate analyses were conducted on all prespecified secondary endpoints, which included time-to-event data: backward elimination procedure on the Cox proportional hazards regression model was applied considering the assigned treatment as fixed (nonoptional) term and all other possible predictors (supplement E3) as optional terms. All other possible predictors were prespecified. The Cox model was iteratively fitted, and the optional predictor with the highest P value was eliminated at each step, until all remaining (if any) optional predictors were simultaneously significant at  $P < 0.05$ . Post hoc exploratory analyses on the rate of endotracheal reintubation were conducted in the following subgroups: patients having received mechanical ventilation because of acute respiratory failure; patients with age  $> 65$  years; patients with mechanical ventilation duration  $> 7$  days; patients with SAPSII  $> 40$  at ICU admission; patients with SOFA score  $> 4$  at enrollment; patients with compensated hypercapnia (PaCO<sub>2</sub> 45 mm Hg with pH  $> 7.35$  at study inclusion).

All analyses other than the one on the primary outcome should be considered exploratory and intended as hypothesis generating. Two-sided P value  $< 0.05$  was considered statistically significant. There were no missing data for the primary, secondary, and safety endpoints. All statistical analyses were conducted in the R statistical computing environment (R Foundation for Statistical Computing).



**Figure 1.** Consort diagram of the RINO (Reintubation Rate after Oxygen Therapy: Impact of Nasal High-Flow versus VenturiMask Oxygen Therapy on Weaning Outcome) trial.

## Results

Between June 1, 2014 and October 31, 2016, 1,385 patients were screened for undergoing weaning from mechanical ventilation; among 557 patients eligible for inclusion in the study, 517 underwent randomization (Figure 1). After secondary exclusion by the independent data manager of 2 patients who withdrew consent, 4 who did not receive assigned treatments within 2 hours after extubation, 15 who had significant inconsistencies in the recorded data, and 2 who had been erroneously deemed eligible despite PaO<sub>2</sub>:FIO<sub>2</sub> ratio.300mmHg, 494 patients completed the trial and were included in the intention-to-treat analysis: 243 patients were assigned to the high-flow group and 251 patients to the VenturiMask group.

## Characteristics at Inclusion

The characteristics of the patients at enrollment are displayed in Table 1. Patients had been mechanically ventilated mainly because of acute respiratory failure (220 patients, 45%), for a median time of 5 days (IQR, 3–8 d). While on VenturiMask with a nominal FIO<sub>2</sub> of 31% after extubation, their mean (6SD) PaO<sub>2</sub>:FIO<sub>2</sub> ratio was 228±64 mm Hg.

Table 1. Characteristics of Patients at Baseline, According to Study Group

| Characteristic  | VenturiMask (n = 251) | High-Flow Nasal Oxygen (n = 243) |
|---|-----------------------|----------------------------------|
| Age, yr   | 63 ± 14               | 62 ± 15                          |
| Male sex  | 166 (66)              | 171 (70)                         |
| Body mass index*  | 27 ± 6                | 27 ± 5                           |
| SAPSII <sup>†</sup>                                     | 42 ± 18               | 40 ± 16                          |
| Type of admission in the ICU                            |                       |                                  |
| Medical   | 172 (69)              | 165 (68)                         |
| Surgical or trauma                                      | 79 (31)               | 78 (32)                          |
| Current smoking   | 49 (20)               | 48 (20)                          |
| Comorbidities   |                       |                                  |
| Cardiac failure   | 34 (14)               | 29 (12)                          |
| Myocardial infarction                                   | 14 (6)                | 15 (6)                           |
| Renal failure   | 40 (16)               | 30 (12)                          |
| Chronic respiratory failure                             | 30 (12)               | 29 (12)                          |
| Liver cirrhosis   | 23 (9)                | 20 (8)                           |
| HIV   | 7 (3)                 | 3 (1)                            |
| Multiple transfusions                                   | 7 (3)                 | 9 (4)                            |
| Use of corticosteroids                                  | 27 (11)               | 26 (11)                          |
| Chemotherapy  | 15 (6)                | 9 (4)                            |
| Reason for mechanical ventilation                       |                       |                                  |
| Acute respiratory failure                               | 102 (41)              | 118 (49)                         |
| Brain injury or altered consciousness                   | 50 (20)               | 48 (20)                          |
| Surgery   | 45 (18)               | 29 (12)                          |
| Circulatory failure                                     | 32 (13)               | 22 (9)                           |
| Trauma  | 10 (4)                | 17 (7)                           |
| Duration of ICU stay before enrollment, d               | 6 (3–9)               | 6 (3–9)                          |
| Duration of mechanical ventilation before enrollment, d | 6 (3–9)               | 5 (3–8)                          |
| SOFA at enrollment                                      | 4 (3–7)               | 4 (3–6)                          |
| Heart rate at enrollment, beats/min                     | 87 ± 19               | 85 ± 21                          |
| Arterial pressure at enrollment, mm Hg                  |                       |                                  |
| Systolic  | 133 ± 20              | 134 ± 21                         |
| Mean  | 89 ± 13               | 90 ± 14                          |
| Arterial blood gases at enrollment                      |                       |                                  |
| pH  | 7.46 ± 0.06           | 7.45 ± 0.05                      |
| PaO <sub>2</sub> :FIO <sub>2</sub> , mm Hg <sup>‡</sup> | 232 ± 49              | 225 ± 42                         |
| PaCO <sub>2</sub> , mm Hg                               | 38 ± 8                | 38 ± 7                           |
| SpO <sub>2</sub> :FIO <sub>2</sub> <sup>§</sup>         | 306 ± 23              | 304 ± 22                         |
| VenturiMask FIO <sub>2</sub> at enrollment, %           | 31 ± 3                | 31 ± 3                           |
| Respiratory rate, breaths/min                           | 21 (17–25)            | 20 (18–24)                       |

Definition of abbreviations: SAPSII = Simplified Acute Physiology Score II; SpO<sub>2</sub> = peripheral oxygen saturation.

Data are presented as mean ± SD, n (%), or median (interquartile range).

\*The body mass index is the weight in kilograms divided by the square of the height in meters.

<sup>†</sup>The SAPSII was calculated from 17 variables at enrollment, information about previous health status, and information obtained at admission. Scores range from 0 to 163, with higher scores indicating more severe disease.

<sup>‡</sup>PaO<sub>2</sub>:FIO<sub>2</sub> was available for 476 patients: 245 in the VenturiMask group and 231 in the high-flow nasal oxygen group.

<sup>§</sup>SpO<sub>2</sub>:FIO<sub>2</sub> was available for 417 patients: 211 in the VenturiMask group and 206 in the high-flow nasal oxygen group.

## Treatments

The initial settings were as follows: in the VenturiMask group, nominal FIO<sub>2</sub> was 36.612%; in the high-flow group, FIO<sub>2</sub> was 50.623% with a gas flow rate of 45.612 L/min. In the high-flow group, treatment was delivered before successful weaning for a median time of 28 hours (IQR, 23–58 h). No patient in the VenturiMask group received high-flow nasal oxygen.

## Primary Endpoint

Primary and secondary outcomes are displayed in Table 2. Sixty-one patients (12%) were reintubated within 72 hours and before discharge from the ICU. Two patients (one in each group) were excluded from the modified intention-to-treat analysis on the primary endpoint, as the adjudication committee deemed that reintubation had not been performed because of the prespecified criteria of the protocol. In this cohort (492 patients), reintubation at 72 hours within the ICU stay was needed in 32 of 242 patients (13%) in the high-flow group and in 27 of 250 (11%) patients in the VenturiMask group, with an unadjusted odds ratio for the high-flow group of 1.26 (95% confidence interval [CI], 0.70–2.26) (P=0.49) (Figure 2).

No significant intergroup differences in the rate of endotracheal intubation at 72 hours and 28 days were found in any of the analyzed subgroup of patients (see Table in supplement E4).

## Secondary Endpoints

In the intention-to-treat population (494 patients), endotracheal reintubation within 72 hours and before ICU discharge was needed in 33 patients (14%) in the high flow group and in 28 patients (11%) in the VenturiMask group, with an unadjusted odds ratio for the high-flow group of 1.25 (95% CI, 0.71–2.23) (P = 0.49). This difference remained not significant after adjustment for covariates (presence of kidney failure at inclusion), with an adjusted hazard ratio for the high-flow group of 1.19 (95% CI, 0.72–1.96) (P=0.51).

At 28 days, endotracheal reintubation was needed in 51 patients (21%) in the high flow group and in 57 patients (23%) in the VenturiMask group, with an unadjusted odds ratio for the high-flow group of 0.90 (95% CI, 0.71–2.23) (P=0.66). This difference remained not significant after adjustment for covariates (PaO<sub>2</sub>:FIO<sub>2</sub> at study inclusion and the duration of ICU stay before enrollment), with an adjusted hazard ratio for the high-flow group of 0.89 (95% CI, 0.60–1.31) (P=0.55) (Figure 3).

The proportion of patients requiring rescue noninvasive ventilation within 72 hours and 28 days from enrollment was significantly lower in the high-flow group than in the VenturiMask group: at 72 hours, 20 patients (8%) versus 42 patients (17%), with an unadjusted odds ratio for the high flow group of 0.45 (95% CI, 0.24–0.81) (P = 0.004); at 28 days, 30 patients (12%) versus 53 patients (21%), with an unadjusted odds ratio for the high-flow group of 0.45 (95% CI, 0.24–0.81) (P = 0.011). The need for rescue noninvasive ventilation remained significantly lower in the high-flow group after adjustment for covariates (72 h: PaO<sub>2</sub>:FIO<sub>2</sub> at study inclusion and presence of HIV; 28 days: PaO<sub>2</sub>:FIO<sub>2</sub> at study inclusion and SOFA score at enrollment), with an adjusted hazard ratio for the high-flow group of 0.39 (95% CI, 0.22–0.71) (P = 0.002) at 72 hours and 0.52 (95% CI, 0.32–0.83) (P = 0.007) at 28 days (Figures 2 and 3).



**Table 2.** Primary and Secondary Outcomes, According to Study Group

| Outcome   | High-Flow Nasal Oxygen (n = 243) | VenturiMask (n = 251) | Odds Ratio or Mean Difference (95% CI) | P Value |
|---|----------------------------------|-----------------------|--|---------|
| <b>Primary outcome</b>  |                                  |                       |  |         |
| Reintubation within 72 h. Modified intention-to-treat population (after the presence of intubation criteria were adjudicated by the external committee; n = 492 patients) | 32 (13)                          | 27 (11)               | 1.26 (0.70 to 2.26)                    | 0.49    |
| <b>Secondary outcomes</b>   |                                  |                       |  |         |
| Reintubation within 72 h. Intention-to-treat population   | 33 (14)                          | 28 (11)               | 1.25 (0.71 to 2.23)                    | 0.49    |
| Reintubation within 28 d  | 51 (21)                          | 57 (23)               | 0.90 (0.58 to 1.42)                    | 0.66    |
| Need for rescue noninvasive ventilation within 72 h   | 20 (8)                           | 42 (17)               | 0.45 (0.24 to 0.81)                    | 0.004   |
| Need for rescue noninvasive ventilation within 28 d   | 30 (12)                          | 53 (21)               | 0.53 (0.31 to 0.88)                    | 0.011   |
| Duration of stay in the ICU, d  | 11 (7 to 21)                     | 11 (7 to 20)          | 1 (−2 to 3)                            | 0.56    |
| Duration of stay in the hospital, d   | 32 (17 to 64)                    | 33 (20 to 65)         | 1 (−4 to 6)                            | 0.51    |
| Need for ICU readmission  | 23 (9)                           | 19 (8)                | 1.28 (0.64 to 2.55)                    | 0.52    |
| In-ICU mortality  | 12 (5)                           | 16 (6)                | 0.76 (0.42 to 0.76)                    | 0.56    |
| In-hospital mortality   | 32 (13)                          | 40 (16)               | 0.80 (0.47 to 1.37)                    | 0.44    |
| <b>Safety endpoints</b>   |                                  |                       |  |         |
| Hours to reintubation   | 50 (16 to 91)                    | 72 (21 to 165)        | −31 (−78 to 16)                        | 0.11    |
| Incidence of prespecified events requiring reintubation within 72 h from extubation*  |                                  |                       |  |         |
| Hypoxemia   | 16 (7)                           | 16 (6)                | 1.04 (0.51 to 2.12)                    | >0.999  |
| Hypercapnia   | 2 (1)                            | 7 (3)                 | 0.29 (0.06 to 1.41)                    | 0.18    |
| Inability to clear secretions   | 19 (8)                           | 15 (6)                | 1.33 (0.66 to 2.69)                    | 0.48    |
| Intolerance to rescue treatment with noninvasive ventilation  | 2 (1)                            | 5 (2)                 | 0.41 (0.08 to 2.12)                    | 0.45    |
| Altered mental status   | 11 (5)                           | 5 (2)                 | 2.33 (0.80 to 6.82)                    | 0.13    |
| Incidence of prespecified events requiring rescue noninvasive ventilation use*  |                                  |                       |  |         |
| Hypoxemia   | 24 (10)                          | 32 (13)               | 0.75 (0.41 to 1.36)                    | 0.32    |
| Hypercapnia   | 9 (4)                            | 8 (3)                 | 1.17 (0.39 to 2.54)                    | 0.81    |
| Tachypnea   | 13 (5)                           | 38 (15)               | 0.32 (0.16 to 0.64)                    | <0.001  |
| Respiratory fatigue or distress   | 27 (11)                          | 48 (19)               | 0.53 (0.31 to 0.90)                    | 0.017   |
| <b>Exploratory outcomes</b>   |                                  |                       |  |         |
| Episodes of hypoxemia per patient (Sp <sub>O<sub>2</sub></sub> < 90%) during the stay in ICU  | 0 (0 to 0)                       | 0 (0 to 0)            | −0.1 (−0.2 to 0.1)                     | 0.49    |
| Ventilator-free days at 28 d  | 28 (25 to 28)                    | 28 (23 to 28)         | 0 (−2 to 1)                            | 0.34    |
| 90-d mortality  | 29 (12)                          | 39 (16)               | 0.74 (0.42 to 1.27)                    | 0.30    |
| Reintubation or death without reintubation during the hospital stay   | 67 (28)                          | 77 (31)               | 0.86 (0.58 to 1.27)                    | 0.49    |

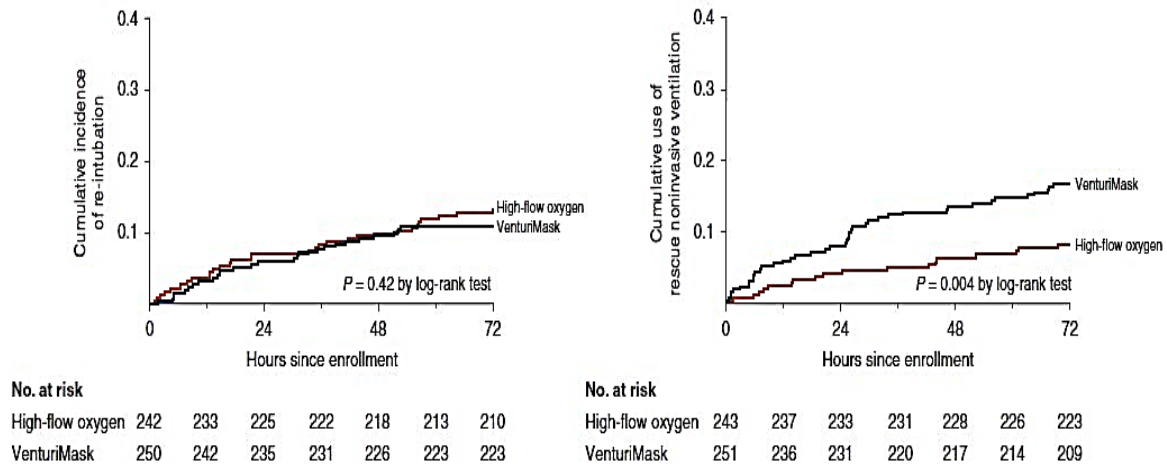
*Definition of abbreviation:* Sp<sub>O<sub>2</sub></sub> = peripheral oxygen saturation.

Values are displayed as median (interquartile range) or n (%). There were no missing data among the two groups. All the calculations were unadjusted. Adjusted results are reported in the RESULTS section of the manuscript. For nonnormal quantitative variables, comparison between groups was performed with the Mann-Whitney test. Comparisons between groups for qualitative variables were performed with the chi-square test or the Fisher exact test, as appropriate in agreement with tests assumptions.

\*Each patient could develop one or more indications to endotracheal reintubation and rescue noninvasive ventilation. For all other endpoints, what is reported is the number of patients with the event rather than number of events.

Among patients who received rescue noninvasive ventilation within 28 days from enrollment, the rate of subsequent endotracheal reintubation was 55% (29 of 53 treated patients) in the VenturiMask group and 53% (16 of 30 treated patients) in the high-flow group (P.0.99).

The rate of in-hospital mortality was 13% in the high-flow group and 16% in the VenturiMask group, a difference that was statistically significant neither in the univariate analysis (unadjusted odds ratio for the high-flow group of 0.80 [95% CI, 0.47–1.37]; P = 0.44) nor after adjustment for covariates (age, SAPSII at ICU admission and PaO<sub>2</sub>:FIO<sub>2</sub> at study inclusion), with an adjusted hazard ratio for the high-flow group of 0.84 (95% CI, 0.51–1.40).



**Figure 2.** Left: Kaplan-Meier plots of the cumulative incidence of reintubation within 72 hours from enrollment and before ICU discharge in the modified intention-to-treat population (after intubation criteria were adjudicated by the external committee;  $n=492$  patients). Right: Kaplan-Meier plots of the cumulative use of rescue noninvasive ventilation within 72 hours from enrollment in the intention-to-treat population ( $n=494$  patients).

## Safety Endpoints

For reintubated patients, the median time from randomization to endotracheal reintubation was 50 hours (IQR, 16 to 91) in the high-flow group and 72 hours (IQR, 21 to 165) in the VenturiMask group, a difference that was not statistically significant (mean difference, 231 h [95% CI, 278 to 16 h];  $P = 0.11$ ).

Patients in the high-flow group required noninvasive ventilation less frequently than those receiving VenturiMask because of a statistically significantly lower incidence of tachypnea (5% vs. 15%; unadjusted odds ratio for the high-flow group of 0.32 [95% CI, 0.16–0.64];  $P, 0.001$ ) and fatigue or respiratory distress (11% vs. 19%, unadjusted odds ratio for the high flow group of 0.53 [95% CI, 0.31–0.90];  $P = 0.017$ ) during the allocated treatment.

There were no statistically significant differences in any of other analyzed outcomes (Table 2).

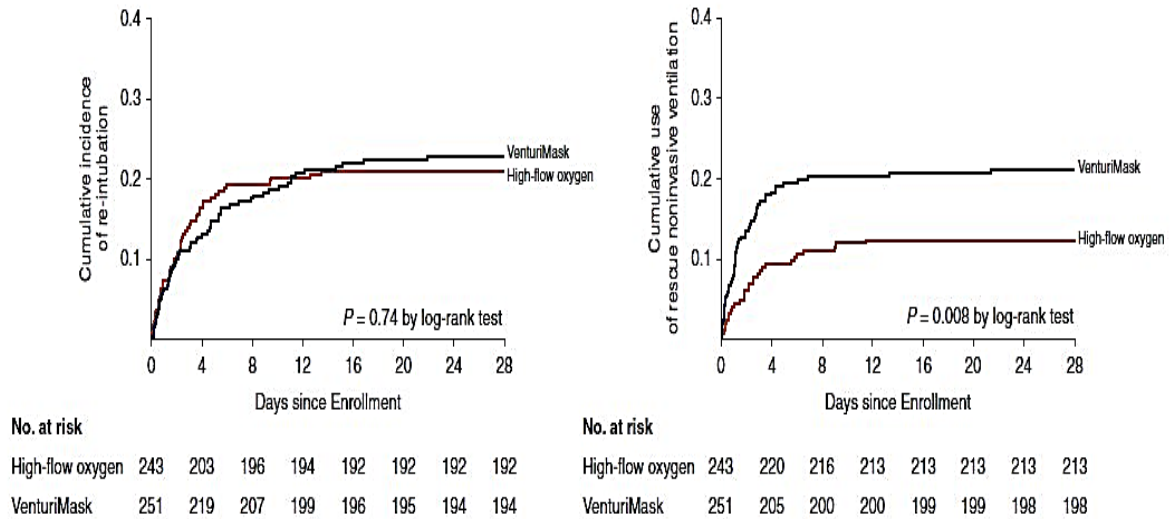
## Discussion

In this open-label, multicenter randomized trial involving patients who experienced hypoxemia after scheduled extubation in the ICU, the use of high-flow nasal oxygen did not result in a lower rate of extubation failure in comparison to VenturiMask oxygen therapy. Consistently, no effect was found on the length of intensive care and hospital stay or on all-cause mortality. Patients in the VenturiMask group, however, more often required rescue noninvasive ventilation.

The use of high-flow nasal oxygen, which delivers up to 60 L/min of an air/oxygen mixture actively conditioned by a heated humidifier through specifically designed nasal cannula, is becoming widespread (28, 29). The system, by matching patients' peak inspiratory flow, ensures accurate delivery of the set FIO<sub>2</sub> (30, 31), generates a flow-dependent upper airways washout effect enhancing CO<sub>2</sub> clearance in the anatomical dead space (32), and optimizes tolerance through full gas conditioning and the comfortable interface (33–35). In addition, an



air entrainment effect produced by a patient's expiration against the continuous gas flow generates a nasopharyngeal flow-dependent positive pressure, with values up to 5–6 cmH<sub>2</sub>O reached at the end of expiration and when the mouth is closed (36–39). Compared with low-flow oxygen, high-flow nasal oxygen increases end-expiratory lung volume and PaO<sub>2</sub>:FIO<sub>2</sub> ratio, reduces work of breathing, enhances CO<sub>2</sub> clearance, and optimizes compliance of the respiratory system, with The most benefit documented when the highest flows are used (36, 40–43).



**Figure 3.** Left: Kaplan-Meier plots of the cumulative incidence of reintubation within 28 days from enrollment in the intention-to-treat population ( $n=494$  patients). Right: Kaplan-Meier plots of the cumulative use of rescue noninvasive ventilation within 28 days in the intention-to-treat population ( $n=494$  patients).

Hernandez and colleagues reported that, among critically ill patients at low risk of weaning failure, preemptive high-flow nasal oxygen after extubation prevents reintubation in comparison to low-flow oxygen (17). In that study, however, the use of noninvasive ventilation was rigorously discouraged in both groups; in our trial, extubation outcome might have been affected by the possibility of applying a rescue noninvasive ventilation trial in patients experiencing respiratory distress. Preemptive noninvasive ventilation in unselected patients after extubation can delay reintubation, with a detrimental effect on clinical outcome (44, 45), and is hence discouraged. However, its use among selected cohorts of patients from experienced teams may be of benefit (46), facilitating the weaning process in patients at high risk of reintubation while recovering from acute respiratory failure (47–52). Recent large studies support its use for treating hypoxemic patients after surgery and critically ill patients at high risk of reintubation in the ICU (47, 50, 51, 53). In our study, the use of high-flow nasal oxygen was associated with a less frequent need for a rescue treatment with noninvasive ventilation. Importantly, this intervention was applied based on prespecified criteria. The less-frequent use of rescue noninvasive ventilation in the high-flow group was due to lower incidence of tachypnea and respiratory fatigue during the treatment: respiratory muscle unloading and dyspnea relief are well-described effects of high-flow nasal oxygen. These mostly depend on the CO<sub>2</sub> washout from upper airways produced by the device, which reduces ventilation dead space (29, 54). Our findings are consistent with the results of the recent PROPER (Protocolized Post-Extubation Respiratory Support) trial, which showed that preemptive high-flow nasal oxygen in all patients does not reduce the rate of reintubation if

escalation of noninvasive respiratory support (high-flow oxygen or noninvasive ventilation) is permitted in the control group (5).

High-flow nasal oxygen provides clinical benefits in the postextubation phase. Avoiding rescue noninvasive ventilation may improve patients' comfort, reduce personnel workload, and help save ventilator equipment.

All large randomized trials conducted to assess difference in efficacy between devices for oxygen therapy in the postextubation phase compared high-flow nasal with low-flow oxygen (12, 17, 55). VenturiMasks, thanks to the air entrainment effects, provide significantly higher outflows at predetermined FIO<sub>2</sub> than low-flow oxygen, especially when low FIO<sub>2</sub> is used (56). In our study, mean VenturiMask FIO<sub>2</sub> at treatment initiation was 36.612%, and this should correspond to a total nominal gas outflow exceeding 30 L/min, according to manufacturer's specifications. Delivery of higher flows during VenturiMask oxygen therapy, compared with conventional low-flow devices, may have contributed to increase the rate of extubation success in the control group.

Our trial has several strengths that suggest that the results may be generalized to patients who are weaned after at least 48 hours of mechanical ventilation and exhibit hypoxemia after extubation in other ICUs. These include the multicenter design, the sealed randomization to the assigned strategy, a well-defined study population, the use of prespecified standardized criteria for both reintubation and the need for rescue noninvasive ventilation, and complete follow-up at 90 days.

Our study has limitations. The rate of endotracheal reintubation in the VenturiMask group was lower than that hypothesized in the sample size calculation, possibly making the study underpowered to detect smaller differences between groups. Also, submission of the manuscript for publication was delayed because of the shift of the sponsor's personnel in charge to follow the trial and by the surge of the coronavirus disease (COVID-19) pandemic.

In conclusion, compared with VenturiMask oxygen therapy in critically ill patients exhibiting hypoxemia after scheduled extubation, high-flow nasal oxygen does not reduce the rate of endotracheal reintubation. Use of high-flow nasal oxygen is associated with less frequent need for rescue noninvasive ventilation. \_

**Author disclosures** are available with the text of this article at [www.atsjournals.org](http://www.atsjournals.org).

### **Acknowledgment:**

Members of the RINO Trial Study Group are listed in the online supplement. The authors thank Prof. Jean-Christophe M. Richard (Angers, France), Dr. Ferran Roche-Campo (Barcelona, Spain), and Prof. Alain Mercat (Barcelona, Spain) for their contribution as members of the adjudication committee for endotracheal intubation. Prof. Richard, Dr. Ferran-Roche Campo, and Prof. Mercat received a personal fee for their contribution in the study.

### **Author Contributions:**

S.M.M. and M.A. conceived the study. A.D.G. conducted statistical analysis. D.L.G. and S.M.M. interpreted the data and wrote the first draft of the manuscript. L.J.B., V.M.R., and M.A. critically revised the manuscript. S.M.M. organized the study as an overall supervisor.

All other authors contributed to data acquisition. All the authors reviewed the final draft of the manuscript and agreed on submitting it to the Journal. S.M.M. had full access to all the data in the study and takes responsibility for the integrity of the data and the accuracy of the data analysis.

### **Data sharing:**

Data can be made available by the corresponding author (S.M.M.) upon a reasonable request. The study protocol and the statistical analysis plan are available as supplementary material to this article.

## **References**

1. Boles J-M, Bion J, Connors A, Herridge M, Marsh B, Melot C, et al. Weaning from mechanical ventilation. *Eur Respir J* 2007;29:1033–1056.
2. McConville JF, Kress JP. Weaning patients from the ventilator. *N Engl J Med* 2012;367:2233–2239.
3. Esteban A, Ferguson ND, Meade MO, Frutos-Vivar F, Apezteguia C, Brochard L, et al.; VENTILA Group. Evolution of mechanical ventilation in response to clinical research. *Am J Respir Crit Care Med* 2008;177:170–177.
4. Funk G-C, Anders S, Breyer M-K, Burghuber OC, Edelmann G, Heindl W, et al. Incidence and outcome of weaning from mechanical ventilation according to new categories. *Eur Respir J* 2010;35:88–94.
5. Casey JD, Vaughan EM, Lloyd BD, Billas PA, Jackson KE, Hall EJ, et al. Protocolized postextubation respiratory support to prevent reintubation: a randomized clinical trial. *Am J Respir Crit Care Med* 2021;204:294–302.
6. Jubran A, Tobin MJ. Pathophysiologic basis of acute respiratory distress in patients who fail a trial of weaning from mechanical ventilation. *Am J Respir Crit Care Med* 1997;155:906–915.
7. Maggiore SM, Battilana M, Serano L, Petrini F. Ventilatory support after extubation in critically ill patients. *Lancet Respir Med* 2018;6:948–962.
8. Frat J-P, Thille AW, Mercat A, Girault C, Ragot S, Perbet S, et al.; FLORALI Study Group; REVA Network. High-flow oxygen through nasal cannula in acute hypoxemic respiratory failure. *N Engl J Med* 2015;372: 2185–2196.
9. Rittayamai N, Tscheikuna J, Rujiwit P. High-flow nasal cannula versus conventional oxygen therapy after endotracheal extubation: a randomized crossover physiologic study. *Respir Care* 2014;59:485–490.

10. Vourc'h M, Asfar P, Volteau C, Bachoumas K, Clavieras N, Egreteau P-Y, et al. High-flow nasal cannula oxygen during endotracheal intubation in hypoxemic patients: a randomized controlled clinical trial. *Intensive Care Med* 2015;41:1538–1548.
11. Miguel-Montanes R, Hajage D, Messika J, Bertrand F, Gaudry S, Rafat C, et al. Use of high-flow nasal cannula oxygen therapy to prevent desaturation during tracheal intubation of intensive care patients with mild-to-moderate hypoxemia. *Crit Care Med* 2015;43:574–583.
12. Fernandez R, Subira C, Frutos-Vivar F, Rialp G, Laborda C, Masclans JR, et al. High-flow nasal cannula to prevent postextubation respiratory failure in high-risk non-hypercapnic patients: a randomized multicenter trial. *Ann Intensive Care* 2017;7:47.
13. Futier E, Paugam-Burtz C, Godet T, Khoy-Ear L, Rozencwajg S, Delay J-M, et al.; OPERA study investigators. Effect of early postextubation highflow nasal cannula vs conventional oxygen therapy on hypoxaemia in patients after major abdominal surgery: a French multicentre randomised controlled trial (OPERA). *Intensive Care Med* 2016;42:1888–1898.
14. Grieco DL, Maggiore SM, Roca O, Spinelli E, Patel BK, Thille AW, et al. Non-invasive ventilatory support and high-flow nasal oxygen as first-line treatment of acute hypoxemic respiratory failure and ARDS. *Intensive Care Med* 2021;47:851–866.
15. Hernandez G, Vaquero C, Colinas L, Cuenca R, Gonzalez P, Canabal A, et al. Effect of postextubation high-flow nasal cannula vs noninvasive ventilation on reintubation and postextubation respiratory failure in high-risk patients: a randomized clinical trial. *JAMA* 2016;316:1565–1574.
16. Stephan F, Barrucand B, Petit P, Rezaiguia-Delclaux S, Medard A, Delannoy B, et al.; BiPOP Study Group. High-flow nasal oxygen vs noninvasive positive airway pressure in hypoxemic patients after cardiothoracic surgery: a randomized clinical trial. *JAMA* 2015;313:2331–2339.
17. Hernandez G, Vaquero C, Gonzalez P, Subira C, Frutos-Vivar F, Rialp G, et al. Effect of postextubation high-flow nasal cannula vs conventional oxygen therapy on reintubation in low-risk patients: a randomized clinical trial. *JAMA* 2016;315:1354–1361.
18. Rochweg B, Einav S, Chaudhuri D, Mancebo J, Mauri T, Helviz Y, et al. The role for high flow nasal cannula as a respiratory support strategy in adults: a clinical practice guideline. *Intensive Care Med* 2020;46:2226–2237.
19. Maggiore SM, Idone FA, Vaschetto R, Festa R, Cataldo A, Antonicelli F, et al. Nasal high-flow versus Venturi mask oxygen therapy after extubation: effects on oxygenation, comfort, and clinical outcome. *Am J Respir Crit Care Med* 2014;190:282–288.
20. Ferrer M, Sellaes J, Valencia M, Carrillo A, Gonzalez G, Badia JR, et al. Non-invasive ventilation after extubation in hypercapnic patients with chronic respiratory disorders: randomised controlled trial. *Lancet* 2009; 374:1082–1088.

21. Pandharipande PP, Shintani AK, Hagerman HE, St Jacques PJ, Rice TW, Sanders NW, et al. Derivation and validation of Spo<sub>2</sub>/Fio<sub>2</sub> ratio to impute for Pao<sub>2</sub>/Fio<sub>2</sub> ratio in the respiratory component of the Sequential Organ Failure Assessment score. *Crit Care Med* 2009;37: 1317–1321.
22. Ferrer M, Esquinas A, Arancibia F, Bauer TT, Gonzalez G, Carrillo A, et al. Noninvasive ventilation during persistent weaning failure: a randomized controlled trial. *Am J Respir Crit Care Med* 2003;168: 70–76.
23. Nava S, Gregoretti C, Fanfulla F, Squadrone E, Grassi M, Carlucci A, et al. Noninvasive ventilation to prevent respiratory failure after extubation in high-risk patients. *Crit Care Med* 2005;33:2465–2470.
24. Mauri T, Galazzi A, Binda F, Masciopinto L, Corcione N, Carlesso E, et al. Impact of flow and temperature on patient comfort during respiratory support by high-flow nasal cannula. *Crit Care* 2018;22:120.
25. Patel BK, Wolfe KS, Pohlman AS, Hall JB, Kress JP. Effect of noninvasive ventilation delivered by helmet vs face mask on the rate of endotracheal intubation in patients with acute respiratory distress syndrome: a randomized clinical trial. *JAMA* 2016;315:2435–2441.
26. Antonelli M, Conti G, Rocco M, Bui M, De Blasi RA, Vivino G, et al. A comparison of noninvasive positive-pressure ventilation and conventional mechanical ventilation in patients with acute respiratory failure. *N Engl J Med* 1998;339:429–435.
27. Grieco DL, Menga LS, Cesarano M, Ros\_a T, Spadaro S, Bitondo MM, et al.; COVID-ICU Gemelli Study Group. Effect of helmet noninvasive ventilation vs high-flow nasal oxygen on days free of respiratory support in patients with COVID-19 and moderate to severe hypoxemic respiratory failure: the HENIVOT randomized clinical trial. *JAMA* 2021; 325:1731–1743.
28. Papazian L, Corley A, Hess D, Fraser JF, Frat J-P, Guitton C, et al. Use of high-flow nasal cannula oxygenation in ICU adults: a narrative review. *Intensive Care Med* 2016;42:1336–1349.
29. Ricard J-D, Roca O, Lemiale V, Corley A, Braunlich J, Jones P, et al. Use of nasal high flow oxygen during acute respiratory failure. *Intensive Care Med* 2020;46:2238–2247.
30. Bazuaye EA, Stone TN, Corris PA, Gibson GJ. Variability of inspired oxygen concentration with nasal cannulas. *Thorax* 1992;47:609–611.
31. Chanques G, Riboulet F, Molinari N, Carr J, Jung B, Prades A, et al. Comparison of three high flow oxygen therapy delivery devices: a clinical physiological cross-over study. *Minerva Anesthesiol* 2013;79: 1344–1355.
32. M€oller W, Celik G, Feng S, Bartenstein P, Meyer G, Oliver E, et al. Nasal high flow clears anatomical dead space in upper airway models. *J Appl Physiol* (1985) 2015;118:1525–1532.

33. Schwabbauer N, Berg B, Blumenstock G, Haap M, Hetzel J, Riessen R. Nasal high-flow oxygen therapy in patients with hypoxic respiratory failure: effect on functional and subjective respiratory parameters compared to conventional oxygen therapy and non-invasive ventilation (NIV). *BMC Anesthesiol* 2014;14:66.
34. Sztrymf B, Messika J, Bertrand F, Hurel D, Leon R, Dreyfuss D, et al. Beneficial effects of humidified high flow nasal oxygen in critical care patients: a prospective pilot study. *Intensive Care Med* 2011; 37:1780–1786.
35. Cuquemelle E, Pham T, Papon J-F, Louis B, Danin P-E, Brochard L. Heated and humidified high-flow oxygen therapy reduces discomfort during hypoxemic respiratory failure. *Respir Care* 2012;57:1571–1577.
36. Parke RL, Bloch A, McGuinness SP. Effect of very-high-flow nasal therapy on airway pressure and end-expiratory lung impedance in healthy volunteers. *Respir Care* 2015;60:1397–1403.
37. Parke RL, McGuinness SP. Pressures delivered by nasal high flow oxygen during all phases of the respiratory cycle. *Respir Care* 2013;58: 1621–1624.
38. Parke R, McGuinness S, Eccleston M. Nasal high-flow therapy delivers low level positive airway pressure. *Br J Anaesth* 2009;103:886–890.
39. Natalini D, Grieco DL, Santantonio MT, Mincione L, Toni F, Anzellotti GM, et al. Physiological effects of high-flow oxygen in tracheostomized patients. *Ann Intensive Care* 2019;9:114.
40. Mauri T, Turrini C, Eronia N, Grasselli G, Volta CA, Bellani G, et al. Physiologic effects of high-flow nasal cannula in acute hypoxemic respiratory failure. *Am J Respir Crit Care Med* 2017;195:1207–1215.
41. Grieco DL, Toni F, Santantonio MT, Spaziani L, Natalini D, Idone FA, et al. Comfort during high-flow oxygen therapy through nasal cannula in critically ill patients: effects of gas temperature and flow. *Intensive Care Med* 2013;39:512.
42. Corley A, Caruana LR, Barnett AG, Tronstad O, Fraser JF. Oxygen delivery through high-flow nasal cannulae increase end-expiratory lung volume and reduce respiratory rate in post-cardiac surgical patients. *Br J Anaesth* 2011;107:998–1004.
43. Mauri T, Alban L, Turrini C, Cambiaghi B, Carlesso E, Taccone P, et al. Optimum support by high-flow nasal cannula in acute hypoxemic respiratory failure: effects of increasing flow rates. *Intensive Care Med* 2017;43:1453–1463.
44. Esteban A, Frutos-Vivar F, Ferguson ND, Arabi Y, Apeztegia C, Gonzalez M, et al. Noninvasive positive-pressure ventilation for respiratory failure after extubation. *N Engl J Med* 2004;350:2452–2460.
45. Mosier JM, Sakles JC, Whitmore SP, Hypes CD, Hallett DK, Hawbaker KE, et al. Failed noninvasive positive-pressure ventilation is associated with an increased risk of intubation-related complications. *Ann Intensive Care* 2015;5:4.

46. Ferrer M, Valencia M, Nicolas JM, Bernadich O, Badia JR, Torres A. Early noninvasive ventilation averts extubation failure in patients at risk: a randomized trial. *Am J Respir Crit Care Med* 2006;173:164–170.
47. Thille AW, Muller G, Gacouin A, Coudroy R, Decavele M, Sonnevile R, et al.; HIGH-WEAN Study Group and the REVA Research Network. Effect of postextubation high-flow nasal oxygen with noninvasive ventilation vs high-flow nasal oxygen alone on reintubation among patients at high risk of extubation failure: a randomized clinical trial. *JAMA* 2019;322:1465–1475.
48. Vaschetto R, Turucz E, Dellapiazza F, Guido S, Colombo D, Cammarota G, et al. Noninvasive ventilation after early extubation in patients recovering from hypoxemic acute respiratory failure: a single-centre feasibility study. *Intensive Care Med* 2012;38:1599–1606.
49. Vaschetto R, Longhini F, Persona P, Ori C, Stefani G, Liu S, et al. Early extubation followed by immediate noninvasive ventilation vs. standard extubation in hypoxemic patients: a randomized clinical trial. *Intensive Care Med* 2019;45:62–71.
50. Thille AW, Coudroy R, Nay M-A, Gacouin A, Decaele M, Sonnevile R, et al.; HIGH-WEAN Study Group and the REVA Research Network. Beneficial effects of noninvasive ventilation after extubation in obese or overweight patients: a post hoc analysis of a randomized clinical trial. *Am J Respir Crit Care Med* 2022;205:440–449.
51. Grieco DL, Jaber S. Preemptive noninvasive ventilation to facilitate weaning from mechanical ventilation in obese patients at high risk of reintubation. *Am J Respir Crit Care Med* 2022;205: 382–383.
52. Rittayamai N, Grieco DL, Brochard L. Noninvasive respiratory support in intensive care medicine. *Intensive Care Med* [online ahead of print] 27 Jun 2022; DOI: 10.1007/s00134-022-06762-6.
53. Jaber S, Lescot T, Futier E, Paugam-Burtz C, Seguin P, Ferrandiere M, et al.; NIVAS Study Group. Effect of noninvasive ventilation on tracheal reintubation among patients with hypoxemic respiratory failure following abdominal surgery: a randomized clinical trial. *JAMA* 2016; 315:1345–1353.
54. Mcoller W, Feng S, Domanski U, Franke K-J, Celik G, Bartenstein P, et al. Nasal high flow reduces dead space. *J Appl Physiol (1985)* 2017;122: 191–197.
55. Fernando SM, Tran A, Sadeghirad B, Burns KEA, Fan E, Brodie D, et al. Noninvasive respiratory support following extubation in critically ill adults: a systematic review and network meta-analysis. *Intensive Care Med* 2022;48:137–147.
56. Howard LS. Oxygen therapy. *Clin Med (Lond)* 2009;9:156–159.

