



**HAL**  
open science

## **Interactive effects of metals and carbon nanotubes in a microcosm agrosystem**

Mathieu Leroy, Benjamin Pey, Vincent E.J. Jassey, Clarisse Liné, Arnaud Elger, Anne Probst, Emmanuel Flahaut, Jérôme Silvestre, Camille Larue

### ► **To cite this version:**

Mathieu Leroy, Benjamin Pey, Vincent E.J. Jassey, Clarisse Liné, Arnaud Elger, et al.. Interactive effects of metals and carbon nanotubes in a microcosm agrosystem. *Journal of Hazardous Materials*, 2022, 431, pp.128613. 10.1016/j.jhazmat.2022.128613 . hal-03726547

**HAL Id: hal-03726547**

**<https://hal.science/hal-03726547>**

Submitted on 18 Jul 2022

**HAL** is a multi-disciplinary open access archive for the deposit and dissemination of scientific research documents, whether they are published or not. The documents may come from teaching and research institutions in France or abroad, or from public or private research centers.

L'archive ouverte pluridisciplinaire **HAL**, est destinée au dépôt et à la diffusion de documents scientifiques de niveau recherche, publiés ou non, émanant des établissements d'enseignement et de recherche français ou étrangers, des laboratoires publics ou privés.

# Interactive effects of metals and carbon nanotubes in a microcosm agrosystem

Leroy Mathieu<sup>1,2</sup>, Pey Benjamin<sup>1</sup>, Jassey Vincent E.J.<sup>1</sup>, Liné Clarisse<sup>1,2</sup>, Elger Arnaud<sup>1</sup>, Probst Anne<sup>1</sup>,  
Flahaut Emmanuel<sup>2</sup>, Silvestre Jérôme<sup>1</sup>, Larue Camille<sup>1</sup>

<sup>1</sup>Laboratoire écologie fonctionnelle et environnement, Université de Toulouse, CNRS, Toulouse, France, <sup>2</sup>CIRIMAT, Université de Toulouse, CNRS, INPT, UPS, UMR CNRS-UPS-INP N°5085, Université Toulouse 3 Paul Sabatier, Bât. CIRIMAT, 118, route de Narbonne, 31062 Toulouse cedex 9, France

## Abstract

Agricultural soils are exposed to multiple contaminants through the use of agrochemicals or sewage sludge, introducing metals, nanomaterials and others. Among nanomaterials, carbon nanotubes (CNTs) are known for their large surface area and adsorption capabilities, possibly modifying other element behavior. However, to date, very little is known about the impacts of such interactions in agrosystems. In this study, we aimed at understanding the transfer and toxicity of contaminants (Cd, Pb, Zn and CNTs) in microcosms including native soil bacteria, earthworms and lettuce. After a 6 week exposure, no effect of the addition of CNTs to metal contaminated soils was detected on bacterial concentration or earthworm growth. However, in lettuce, an interactive effect between CNTs and metals was highlighted: in the soil containing the highest metal concentrations the addition of 0.1 mg kg<sup>-1</sup> CNTs led to a biomass loss (-22%) and a flavonoid concentration increase (+27%). In parallel, the addition of CNTs led to differential impacts on elemental uptake in lettuce leaves possibly related to the soil organic matter content. For earthworms, the addition of 10 mg kg<sup>-1</sup> CNTs

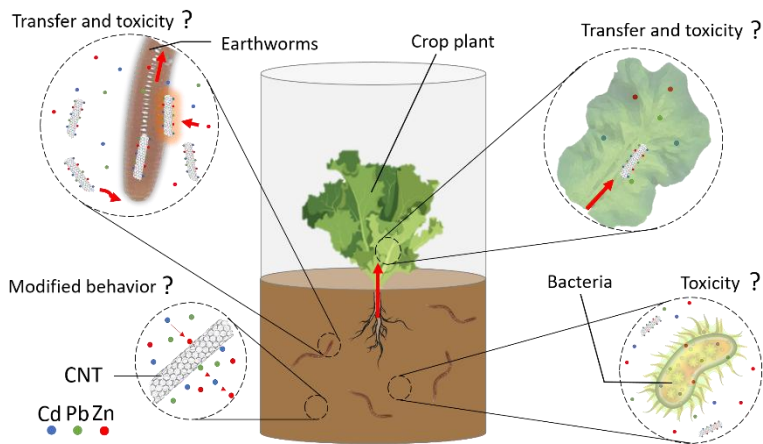
25 resulted in an increased body elemental transfer in the soil with the higher organic matter content  
26 (Pb: + 34% and Zn: + 25%).

27

28 **Keywords:** multiple stress, cocktail contaminants, risk assessment, toxicity, transfer

29

30 **Graphical abstract**



31

32

33

34

35

36

37

38

39

40

41

## 42 **1. Introduction**

43 For several decades, most agrosystems have faced problems related to diverse agricultural practices.  
44 For instance the continuous spreading of organic and inorganic fertilizers has progressively led to the  
45 accumulation of metals in soils<sup>1,2</sup>. Additionally, the application of sludge from wastewater treatment  
46 plants as fertilizer is reported to be one of the most important sources of metal contamination in  
47 agricultural soils<sup>2,3</sup>. In the long term, this also implies a risk of toxicity to organisms in these  
48 ecosystems and contamination of the food chain<sup>4</sup>. Indeed, many studies demonstrated that soil  
49 contamination with metals reduces the overall bacterial biomass, leads to compositional changes in  
50 bacterial communities and microbial processes that would result from a difference in tolerance to  
51 metals depending on the bacterial species<sup>5,6</sup>. For earthworms, studies have shown a reduction in  
52 their growth through a delay in biomass gain compared to controls<sup>7-9</sup>. Metals can also modify  
53 earthworm reproduction through a reduction in the number of spermatozoa produced<sup>10</sup>, cocoon  
54 production<sup>8,11,12</sup>, cocoon hatching success<sup>9,13,14</sup> and number of juveniles produced<sup>8,9,11</sup>. Finally, studies  
55 have observed a slowdown in plant growth parameters following exposure to metals such as  
56 inhibition of seed germination, reduction and/or malformation of the root system, reduction of  
57 mineral nutrition, photosynthetic activity, activity of certain enzymes, leaf area and aerial biomass  
58 and ultimately fruit production<sup>15,16</sup>. In response, authorities such as the European Union (Directive  
59 86/278/EEC) and the United States (Title 40 of the Code of Federal Regulations, Part 503) have  
60 established legislation defining the permitted limits for metals in sewage sludge used for land  
61 application<sup>17,18</sup>.

62 However, with society habit changes, new contaminants have emerged recently such as  
63 nanomaterials. In particular, since their first synthesis in 1962<sup>19</sup>, and because of their remarkable  
64 physical, electronical and chemical properties, graphene-based materials have been increasingly  
65 used by industrials. The nanoscale of graphene-based materials provides a common characteristic to  
66 these materials, a high specific surface area, which reveals increased energy and surface reactivity<sup>20</sup>.  
67 Carbon nanotubes (CNTs) are among the most widely used graphene-based materials<sup>21</sup>. Nowadays,

68 they are found in products such as kitchen utensils, tires and sport equipments<sup>22</sup>, and subsequently  
69 possibly end up into the environment during their journey from production to recycling<sup>23</sup>. In  
70 particular, they tend to accumulate in sewage sludge<sup>23</sup>. According to a review published by Holden *et*  
71 *al.* (2014), the concentration of carbonaceous nanomaterials in biosolids could reach up to 10 mg kg<sup>-1</sup>  
72 while in natural soil it could be up to 0.01 mg kg<sup>-1</sup><sup>24</sup>. In addition, CNTs concentration in agricultural  
73 soils could increase in the future as their use as nano-fertilizer is considered for the production of  
74 plant-based biofuels and crop food<sup>25</sup>. It is thus necessary to better understand the fate of these CNTs  
75 in agrosystems. Recent work has demonstrated that CNTs can decrease soil microbial activity<sup>26-29</sup>;  
76 another study has observed a decrease in soil bacterial biomass when exposed to CNTs<sup>28</sup> (up to  
77 1000 mg kg<sup>-1</sup>). The structure of bacterial communities may also be altered by exposure to CNTs<sup>29,30</sup>.  
78 For earthworms, DNA damage in a dose-response relationship was demonstrated in *Eisenia fetida*  
79 after exposure to CNTs over a wide range of concentrations (50, 250 and 500 mg kg<sup>-1</sup>)<sup>31</sup>. Another  
80 study showed a reduction in cocoon production of up to 60% and 78% at 495 and 1000 mg  
81 MWCNT.kg<sup>-1</sup> of food, respectively<sup>32</sup>. However, a majority of studies did not observe any apparent  
82 effect on earthworms following exposure to CNTs, probably due to their depuration abilities<sup>33-35</sup>,  
83 which limit the toxicity of CNTs to these organisms<sup>34,36-38</sup>. Finally, for crop plants several studies  
84 showed a significant increase in seed germination<sup>39-42</sup>, root length<sup>39,43,44</sup>, biomass production<sup>44-46</sup>, and  
85 flower and fruit productions<sup>47</sup> at different CNTs concentrations (40, 50, 100 and 500 mg.L<sup>-1</sup>).  
86 However, some studies highlighted contrasting results with slower growth of some crop plants<sup>48-51</sup>.  
87 Overall, it is interesting to note that most experiments were carried out with very high CNTs  
88 concentrations in comparison with expected environmental concentrations.

89 The multiplicity of pollutants found in the environment and their different effects raise questions  
90 about their possible interactions. Indeed, organisms are exposed to a wide variety of contaminants,  
91 the cumulative effects of which are as yet uncertain. Studies have shown that there can be a "cocktail  
92 effect" and that individual toxic substances present at seemingly innocuous concentrations can  
93 synergistically cause harm to organisms when mixed<sup>52-55</sup>. To date, very few studies have been carried

94 out on co-contamination of CNTs and metal(oid)s (*e.g.* Cd<sup>56,57</sup> and As<sup>56</sup>), although recent research has  
95 shown possible interactions between them<sup>58,59</sup>. Indeed, CNTs are capable of adsorbing metals to their  
96 surfaces in aqueous solution<sup>60-63</sup>.

97 Finally, in agrosystems, interactions between soil micro-organisms, earthworms and crop plants are  
98 of uttermost importance for ecosystem services; however, these interactions are rarely considered in  
99 ecotoxicology studies which rather focus on single organism exposure. For instance, in a review that  
100 compiles data from 67 different studies on the effect of earthworms on plants, Stefan Scheu<sup>64</sup>  
101 observed in 79% of the cases a significant increase in the biomass of seedlings in the presence of  
102 earthworms. He explained this phenomenon in particular by the action of the worms as bioturbbers,  
103 which modified the soil structure, mineralized and remobilized nutrients and microorganisms<sup>64</sup>.

104 The objectives of this study were to investigate the transfer and toxicity of these cocktail  
105 contaminants (Cd, Pb, Zn and CNTs) at environmentally relevant concentrations on above- and  
106 belowground components (microbial communities, earthworms and crop plants) in a microcosm  
107 agrosystem experiment. Our aims were to: (1) assess the joint toxicity of CNTs and metals on soil  
108 microbial communities (total abundance), earthworms (mortality, biomass and sexual maturity) and  
109 crop plants - here lettuce - (height, leaf number, aerial biomass, photosynthetic activity), (2)  
110 determine whether the transfer of metals was modified in the presence of CNTs in exposed  
111 organisms (earthworms and lettuce plants), and (3) discuss the processes and the factors involved in  
112 the interactions.

113

## 114 **2. Material and methods**

### 115 **2.1. Soil characterization**

116 To avoid adding “fresh” metals to the soils right before the beginning of the experiment which can  
117 bias their behavior<sup>65</sup>, we used “historically” contaminated soils (see supporting information for more

118 details)<sup>66</sup>. As a result, two clay-loam soils with different metal concentrations were collected: Lower  
119 Contamination (LC, Cd = 13.2, Pb = 523.9, Zn = 689.3 mg kg<sup>-1</sup>) and Higher Contamination (HC, Cd =  
120 27.7, Pb = 1471.4, Zn = 1825.1 mg kg<sup>-1</sup>) in metals (see section 3.1 in results for more information).  
121 These soils were chosen to be as similar as possible in term of physico-chemical properties (texture  
122 and pH).

123 The main physico-chemical characteristics (texture, pH, C/N) of soil (sieved to 2 mm) were  
124 determined for each microcosm at the beginning of the experiment (see supporting information for  
125 more details). Total Cd, Pb and Zn concentrations and others elements (B, Ba, Ca, Cu, K, Mg, Mn, Na,  
126 Ni, P, S, Sr) were determined by inductively-coupled plasma atomic emission spectrophotometry  
127 (ICP-AES, see section 2.7).

128

## 129 **2.2. Characterization and suspension of CNTs**

130 CNTs were synthesized at the Interuniversity Center of Materials Research and Engineering (CIRIMAT,  
131 Toulouse University) and observed by transmission electron microscope. They were multi walled  
132 CNTs with length varying from 1 to 20 μm, an average diameter of 16.8 ± 6.7 nm and a specific  
133 surface area of 293 m<sup>2</sup>.g<sup>-1</sup>. CNTs were suspended in ultrapure water at 100 mg.L<sup>-1</sup> and homogenized  
134 for 15 min in an ultrasonic bath before use.

135

## 136 **2.3. Experimental set-up**

137 HC and LC bulk dry soils were contaminated by addition of the required volume of CNTs suspension  
138 to reach a final concentration of 0.1 or 10 mg kg<sup>-1</sup> dry soil; this resulted in a full-factorial design  
139 crossing each metal contamination level with each CNTs concentration (LC0, LC0.1, LC10, HC0, HC0.1  
140 and HC10). This resulted in 36 microcosms: 6 treatments x 6 replicates. The soils were mixed

141 manually for 10 min after contamination. This last step was repeated every day for a week so that  
142 the CNTs were homogeneously distributed in the soil.

143 Three hundred grams of soil were distributed in each experimental unit (L = 45 cm, D = 10 cm); a  
144 lettuce seedling (*Lactuca sativa*, var. Laitue romaine provided by the company Germinance) and 4  
145 earthworms (*E. fetida*, provided by the Laboratory of Civil Engineering and Geo-Environment) were  
146 added (Figure S1). Each earthworm was selected at the sub-adult stage (puberculum without  
147 clitellum) and in a restricted body mass range ( $1.37 \pm 0.22$  g). They were depurated for 24h before  
148 being introduced into the microcosms. To avoid additional trophic stress to the earthworms, they  
149 were fed every two days with  $4.5 \pm 0.2$  mg of crushed (<2 mm) moistened horse dung added in small  
150 clumps on top soil. The experiment lasted 6 weeks (for complete development of organisms) in an  
151 environmental chamber with controlled parameters (10 h/14 h day/night cycle, 24°/22 °C and a  
152 hygrometry rate of 85%).

153

#### 154 **2.4. Bacterial abundance**

155 After exposure to contaminants, 3 mg of previously homogenized dried soil were placed in a tube  
156 with 10 ml of ultrapure water for each microcosm. After 2 hours of stirring, the samples were  
157 centrifuged. The supernatant, containing bacteria, was filtered at 10  $\mu\text{m}$  to remove suspended  
158 matter coarse particles. Then, bacterial samples (1 mL) were stained with SYBR Green I (0.1x final  
159 concentration) and incubated in the dark for 15 minutes. Finally, the samples were run for flow  
160 cytometry (Guava, Merck, United States) at a medium speed of 2  $\mu\text{L s}^{-1}$  and a count rate not  
161 exceeding 1000 events  $\text{s}^{-1}$ .

162

#### 163 **2.5. Toxicity endpoints for *Eisenia fetida***



164 After exposure, the soil was manually disaggregated to recover the worms. The survival rate and  
165 juvenile density were determined. After 24 hours of depuration, earthworms were weighed. Finally,  
166 they were frozen, then freeze-dried and ground to determine their elemental concentration by ICP-  
167 AES (see section 2.7.).

168

## 169 **2.6. Phytotoxicity endpoints**

170 After exposure, several parameters were recorded: length of the longest leaf, number of leaves,  
171 fresh and dry biomasses, leaf surface area and effective quantum yield. Part of the leaf biomass was  
172 dried in an oven (60°C) to determine elemental concentrations by ICP-AES (see section 2.7.). The  
173 remaining biomass was used fresh for methanol-based extraction. Photosynthetic pigments  
174 (chlorophyll a and b) were then quantified<sup>67</sup> and secondary metabolites *i.e.* total phenolic compound,  
175 flavonoid and tannin concentrations were assessed thank to the Folin-Ciocalteu assay<sup>68</sup>, aluminum  
176 chloride method<sup>69</sup> and vanillin method in acid medium<sup>70</sup>, respectively as described in Liné *et al.*  
177 (2021)<sup>71</sup>. More details for phytotoxicity endpoints can be found in supporting information.

178

## 179 **2.7. Sample preparation and chemical analysis by ICP-AES**

180 Acid digestion was performed in a DigiPrep heating system, using HNO<sub>3</sub>, NH<sub>4</sub>F, and HClO<sub>4</sub>, as well as  
181 H<sub>2</sub>O<sub>2</sub>, with a temperature of 100 °C and several evaporation steps for plant and worm samples<sup>72</sup>. For  
182 soils, a two-step digestion was performed in the same system with respectively 4 ml of HCl and 2 ml  
183 HNO<sub>3</sub> during 90 minutes at 95°C, then addition of 1.5 mL of H<sub>2</sub>O<sub>2</sub> and heating at 100°C until near  
184 complete evaporation. For soil, a filtration step (0.45 µm) was added. Digested samples were then  
185 diluted in 5% HNO<sub>3</sub> before analysis on an ICP-AES (IRIS Intrepid II XDL, Thermo Scientific, United  
186 States). along with control samples (blanks with only chemicals and standard reference materials:

187 NIST SRM 1515: apple leaves, irmm BCR 679: white cabbage, NRCC PRON-1: river prawn). Percentage  
188 of recovery for reference materials are given in Table S1.

189

## 190 **2.8. Calculations and statistical analyses**

191 Transfer factor was determined as the ratio between metal concentration in a given organism (plant  
192 or earthworm) divided by the total metal concentration in the soil.

193 For statistical analyses, first, 2-way ANOVAs were performed on the toxicity endpoints to test the  
194 effects of metal concentration ( $p_{metals}$ -value), of CNTs addition ( $p_{CNTs}$ -value) or the interaction  
195 between both ( $p_{CNTs/metals}$ -value). The normality, independence and homoscedasticity of the residues  
196 were checked using Shapiro, Durbin-Watson and Breusch-Pagan tests, respectively. If one of the  
197 three conditions of validity was not met, the data were log-transformed or square root transformed.  
198 In the case of failed transformations, a non-parametric Kruskal-Wallis test was performed. All the  
199 details about statistical analyses can be found in Table S2. Principal component analyses (PCA) were  
200 performed on the elemental concentrations in earthworms and plants. All statistical analyses were  
201 performed on RStudio software (version 3.4.1).

202

203

## 204 **3. Results**

205

### 206 **3.1. Soil characterization**

207 Cd, Pb and Zn concentrations were significantly different between LC and HC soils (Table S3,  $p$ -value  
208 < 0.01 for each metal, t-test). HC soils had 2.1 times more Cd than LC soil (28 vs. 13 mg kg<sup>-1</sup>), 2.9  
209 times more Pb (1471 vs. 524 mg kg<sup>-1</sup>) and 2.6 times more Zn (1825 vs. 689 mg kg<sup>-1</sup>). More information  
210 about other elemental concentrations (Ag, Al, As, Ba, B, Ca, Ce, Co, Cr, Cu, K, Li, Mg, Mn, Na, Ni, P, Pb,

211 S, Sr) in soils is available in Table S4. HC soil was composed of 1.7% sand, 88.4% silt and 9.8% clay  
 212 while LC soil had 5.9% sand, 82.2% silt and 11.8% clay (Table S5). LC and HC soils had pH of 7.2 and  
 213 7.0, respectively. Finally, carbon and nitrogen contents were 1.7 and 3 times more important in HC  
 214 soil than in LC one ( $p$ -value < 0.01).

215

### 216 3.2 Toxicity of the co-contamination on belowground components

217 Overall, bacterial density was 93% higher in LC soils compared to HC soils whatever the CNT  
 218 treatment ( $p$ -value < 0.001, Figure 1A).

219 After exposure, no effect was observed on the worm mortality rate among treatments ( $p$ -value =  
 220 0.157, Figure S2), which was on average of 13%. No effect of metal or CNT treatments was observed  
 221 and no interaction CNTs/metals was detected on worm biomass ( $p_{metals}$ -value = 0.129,  $p_{CNTs}$ -value =  
 222 0.819,  $p_{CNTs/metals}$ -value = 0.304) with an average biomass of 0.94 g for the 4 worms per microcosm  
 223 (Figure 1B). The same was concluded for the number of juvenile ( $p_{metals}$ -value = 0.953,  $p_{CNTs}$ -value =  
 224 0.97,  $p_{CNTs/metals}$ -value = 0.71, Figure S3) with on average 1 juvenile per microcosm.

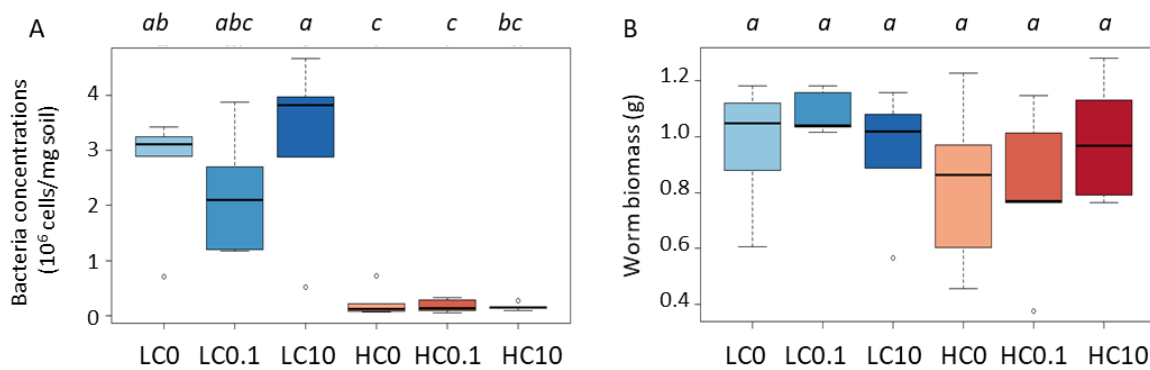


Figure 1: Soil bacterial concentration (A) and earthworm biomass (B) for the six exposure conditions (2 metal modalities: LC = Lower Contamination and HC = Higher Contamination with Cd, Pb and Zn; 3 CNT modalities: 0 = 0 mg kg<sup>-1</sup>, 0.1 = 0.1 mg kg<sup>-1</sup>, 10 = 10 mg kg<sup>-1</sup>) after a 6 week-exposure. Same lowercase letters indicate treatments that do not differ significantly ( $p$ -value > 0.05;  $n=6$ ).

225

### 226 3.3 Toxicity of the co-contamination on the aboveground component

227 Overall, lettuce grown on HC soil had a better growth than plants grown in LC soil with a significantly  
 228 higher biomass (+27%,  $p_{metals}$ -value < 0.001, Figure 2A), longer leaves (+ 3 cm longer,  $p_{metals}$ -value <  
 229 0.001, Figure S4). Dry weight/fresh weight ratio of lettuce was the same among all treatments ( $p$  =  
 230 0.082, Figure S5). No significant effect of CNT addition was observed on any of the assessed  
 231 parameters (Table S2, Figures S4 to S7). However, an interaction between CNT exposure and soil  
 232 metals was detected for lettuce biomass ( $p_{CNTs/metals}$ -value = 0.036) indicating that lettuces exposed to  
 233 HC 0.1 showed significantly lower biomass than HC 0 (-22%, Figure 2A). No interaction was found for  
 234 other development endpoints (Table S2).

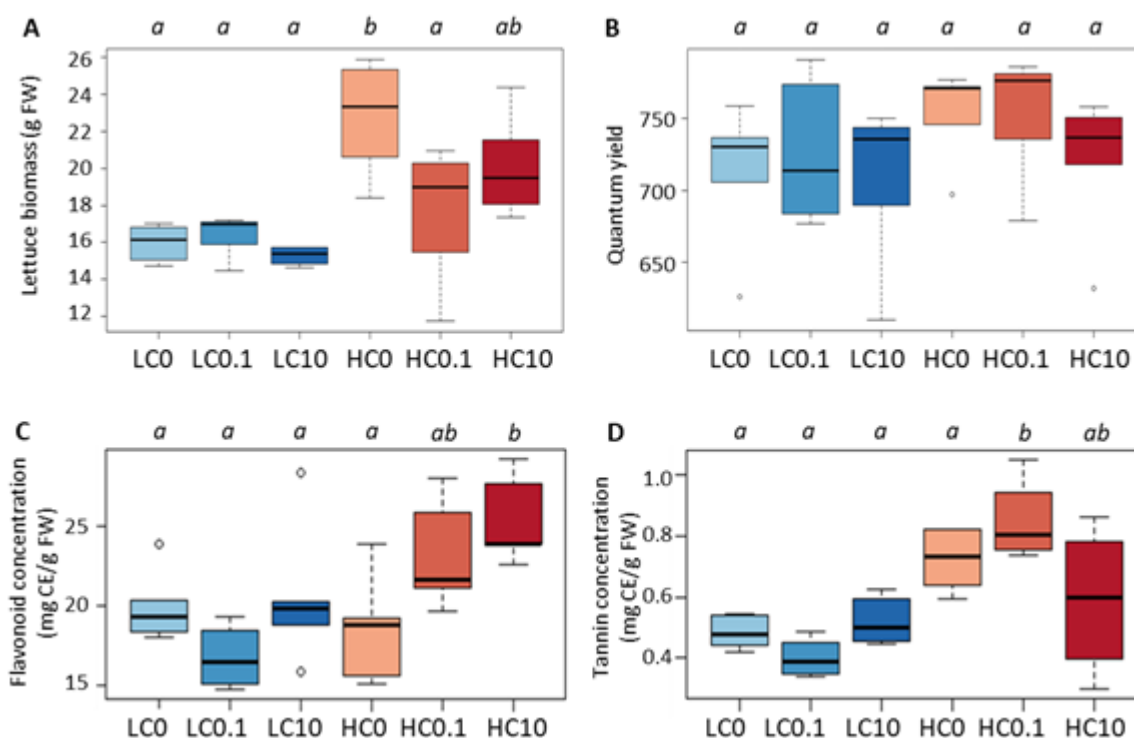


Figure 2: Lettuce aboveground biomass (A), quantum yield (B), flavonoid (C) and tannin (D) concentrations in leaves for the six exposure modalities (2 metal modalities: LC = Lower Contamination and HC = Higher Contamination with Cd, Pb and Zn; 3 CNT modalities: 0 = 0 mg kg<sup>-1</sup>, 0.1 = 0.1 mg kg<sup>-1</sup>, 10 = 10 mg kg<sup>-1</sup>) after a 6 week-exposure. Same lowercase letters indicate treatments that do not differ significantly ( $p$ -value > 0.05;  $n=6$ ). CE: catechine equivalent, FW: fresh weight.

235  
 236 At the physiological level, the quantum yield of lettuce leaves showed no significant difference  
 237 regardless of the treatment with in average a value of 0.730 ( $p$  = 0.302, Figure 2B). However, lettuces  
 238 exposed in HC soils showed significantly higher chlorophyll a and b (+50% and +57%, respectively;

239 Chlo a:  $p_{metals}\text{-value} < 0.001$ ; Chlo b:  $p_{metals}\text{-value} < 0.001$ , Figure S8, S9) but no impact of CNT addition  
240 or interaction between these two contaminants could be highlighted. For secondary metabolites,  
241 flavonoids (+17%,  $p_{metals}\text{-value} = 0.014$ , Figure 2C) and tannins (+53%,  $p_{metals}\text{-value} = 0.001$ , Figure 2D)  
242 were more concentrated in the leaves of plants grown in HC soils than in those grown in LC soils; this  
243 effect was not visible for total phenolic compounds (Figure S10). The addition of CNTs in the medium  
244 led to an increase in flavonoids in comparison with control plants (+20%,  $p_{CNTs}\text{-value} = 0.038$ ) which  
245 was not the case for total phenolic compounds or tannins (Table S2). Interactions CNTs/metals were  
246 detected for flavonoid and tannin concentrations (flavonoids:  $p_{CNTs/metals}\text{-value} = 0.027$ ; tannins:  
247  $p_{CNTs/metals}\text{-value} = 0.016$ ): flavonoids significantly increased with CNT concentration only in HC soils  
248 and tannin concentration was higher after exposure to 0.1 mg kg<sup>-1</sup> CNTs in comparison with the  
249 control in HC soils.

250

### 251 **3.3. Transfer and bioaccumulation of a cocktail of contaminants in below and above ground** 252 **components**

253

#### 254 **3.3.1. Earthworms**

255 Concentrations of Pb and Zn were significantly higher in earthworm tissues exposed in HC soils with  
256 in average 141.8 and 213.1 mg kg<sup>-1</sup>, respectively, than in earthworm tissues exposed in LC soils with  
257 45.4 mg kg<sup>-1</sup> of Pb and 157.5 mg kg<sup>-1</sup> of Zn (Pb:  $p_{metals}\text{-value} < 0.001$ ; Zn:  $p_{metals}\text{-value} < 0.001$ , Figure  
258 3A). This was not the case for Cd ( $p_{metals}\text{-value} = 0.559$ ), with an average concentration of 31 mg kg<sup>-1</sup>  
259 whatever the condition. In addition, there was no effect of CNTs and no interaction CNTs/metals on  
260 the transfer of Cd ( $p_{CNTs}\text{-value} = 0.953$ ,  $p_{CNTs/metals}\text{-value} = 0.683$ ). There was no effect of CNTs either  
261 on the transfer of Pb and Zn in LC soils (Pb:  $p_{CNTs}\text{-value} = 0.390$ ; Zn:  $p_{CNTs}\text{-value} = 0.620$ ). However,  
262 CNT/metal interactions were found on the transfer of Pb and Zn (Pb:  $p_{CNTs/metals}\text{-value} < 0.001$ ; Zn:  
263  $p_{CNTs/metals}\text{-value} < 0.001$ ). Earthworms exposed to 10 mg kg<sup>-1</sup> of CNTs in HC soils contained 34% more

264 Pb and 25% more Zn in their tissues than at other CNTs concentrations (0 and 0.1 mg kg<sup>-1</sup>) which was  
265 not the case for earthworms exposed in LC soils. Taking into account the initial metal concentrations  
266 in soil, the transfer factors of Cd, Pb and Zn highlighted the same trend than concentration results  
267 (Table S6).

268 The PCA individualized earthworms exposed to HC 10 treatment which had higher amounts of  
269 certain elements (B, Mn, Ni, Ba, Na) in their tissues at the end of exposure than earthworms exposed  
270 to the other treatments (Figure 3B, 3C). More information about nominal elemental concentrations  
271 in earthworms (B, Ba, Ca, Cu, K, Mg, Mn, Na, Ni, P, S, Sr) are available in Table S7.

272

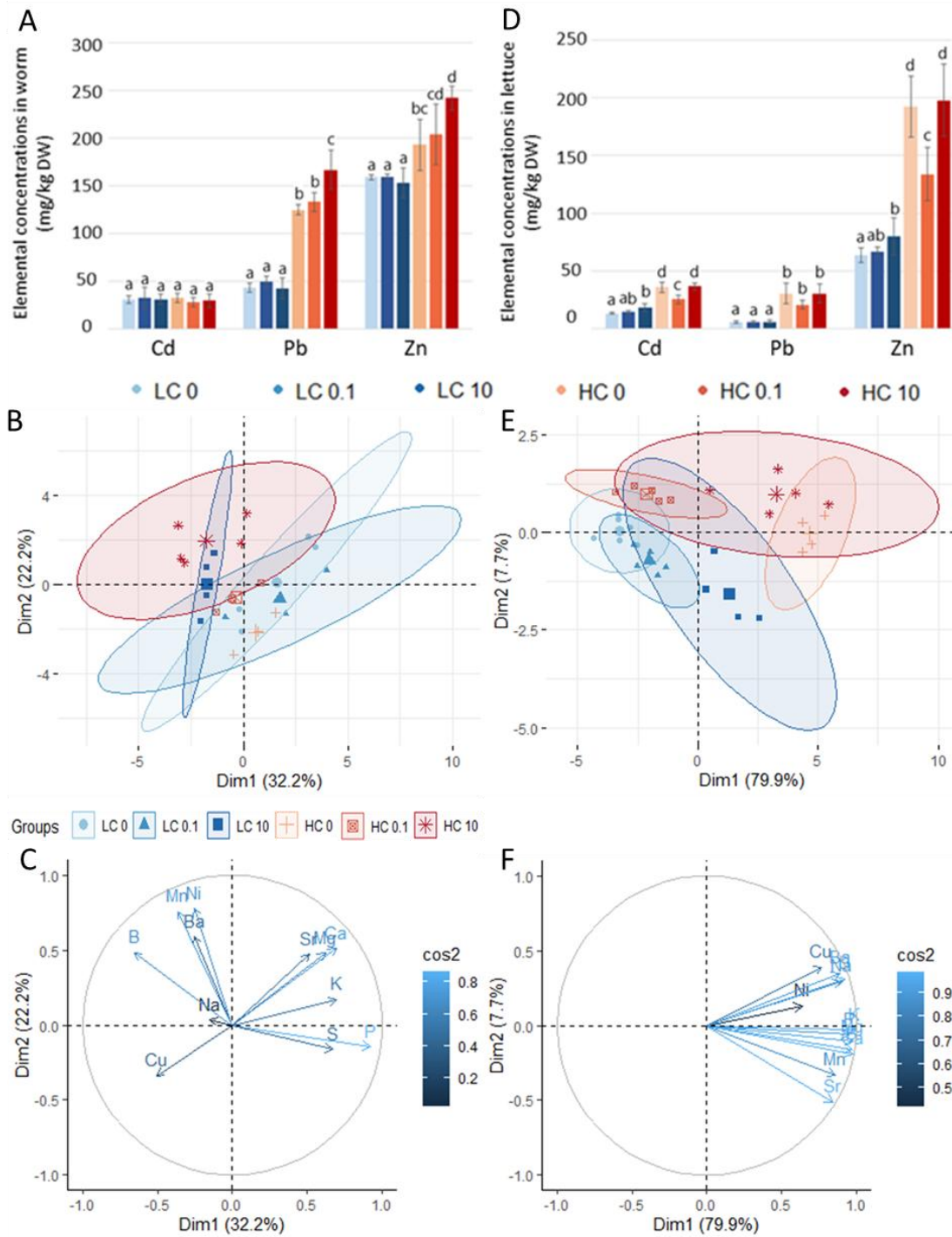


Figure 3: Concentrations of metals (Cd, Pb, Zn) in earthworm tissues (A) and lettuce leaves (D) for the six exposure modalities (2 metal modalities: LC = Low Contamination and HC = High Contamination with Cd, Pb and Zn; 3 CNT modalities: 0 = 0 mg kg<sup>-1</sup>, 0.1 = 0.1 mg kg<sup>-1</sup>, 10 = 10 mg kg<sup>-1</sup>) at the end of exposure (6 weeks). Same lowercase letters indicate treatments that do not differ significantly (*p*-value > 0.05; *n*=6). DW: dry weight. PCA on the elemental content (B, Ba, Ca, Cu, K, Mg, Mn, Na, Ni, P, S, Sr) represented by individuals and correlation circle graphs for earthworm tissues (B and C) and lettuce leaves (E and F) for the 6 treatments. Cos2 corresponds to the level of variable contributions (elements) to dimensions 1 and 2.

### 274 3.3.2. Lettuces

275 Concentrations of Cd, Pb and Zn were significantly higher in leaves of lettuces exposed in HC soils  
276 with in average 32.8, 27.3 and 174.6 mg kg<sup>-1</sup>, respectively than in lettuce leaves grown in LC soils with  
277 15.5, 5.8, 70.2 mg kg<sup>-1</sup> (Cd:  $p_{metals-value} < 0.001$ ; Pb:  $p_{metals-value} < 0.001$ ; Zn:  $p_{metals-value} < 0.001$ ,  
278 Figure 3D). There was no effect of CNTs on the transfer of Pb in lettuce leaves ( $p_{CNTs-value} = 0.090$ )  
279 but it was significant for Cd and Zn (Cd:  $p_{CNTs-value} < 0.001$ ; Zn:  $p_{CNTs-value} < 0.001$ ). Furthermore,  
280 interactions were detected for Cd and Zn with CNTs (Cd:  $p_{CNTs/metals-value} < 0.010$ ; Zn:  $p_{CNTs/metals-value}$   
281 = 0.002) with a significant increase of 37% and 21%, respectively in lettuce exposed to 10 mg kg<sup>-1</sup> CNT  
282 in LC soils compared to control. However, a significant decrease of 29% in Cd and 30% in Zn  
283 accumulation was noticeable in plants exposed to 0.1 mg kg<sup>-1</sup> CNTs in HC soil in comparison to the  
284 control. A similar pattern was observed for Pb (-32%) but was not significant ( $p_{CNTs/metals-value} =$   
285 0.108). Transfer factors followed the same trend than Cd, Pb and Zn absolute concentration in  
286 lettuces (Table S8).

287 The PCA on elemental concentrations (B, Ba, Ca, Cu, K, Mg, Mn, Na, Ni, P, S, Sr) in lettuce leaves after  
288 exposure (Figure 3E, 3F) highlighted the two soil modalities. Lettuces which were exposed to HC soils  
289 contained higher elemental concentrations than those exposed to LC soils. In LC soils, the  
290 concentration gradient of CNTs can be seen along PC 2, explaining 7.7% of the variance. This pattern  
291 was not visible for HC soils. Lettuces treated with HC 0.1 had less nutrients in their leaves at the end  
292 of exposure than the other HC treatments. More information about elemental concentrations in  
293 lettuce leaves can be found in Table S9.

294

295

## 296 4. Discussion

### 297 4.1. Toxicological impacts of a contaminant cocktail



298 Our results demonstrated that the toxicological impacts of CNT/metal co-contamination within an  
299 experimental agrosystem differed from one organism to another.

300 Bacterial populations were less abundant (-93%) in the soil containing the highest concentrations of  
301 metals. This is in agreement with the results of the literature which demonstrate that microbial  
302 concentration depends on the metal contamination of the environment<sup>5,6</sup>. HC soils had 7, 2 and 16  
303 times higher Cd, Pb and Zn concentrations than published ED<sub>50</sub> (Effective Doses) (based on the  
304 inhibition of the dehydrogenase activity) obtained in a comparable soil (clay = 15%, silt = 75%, sand =  
305 10 %): ED<sub>50</sub> of 90, 652 and 115 mg kg<sup>-1</sup> for Cd, Pb and Zn, respectively<sup>73</sup>. The addition of CNTs in the  
306 two soils, at low (0.1 mg kg<sup>-1</sup>) and high (10 mg kg<sup>-1</sup>) concentrations, did not result in additional  
307 impacts on bacterial populations. It is interesting to note as it differs from what was expected since  
308 the state of the art suggested that the addition of CNTs (in non-contaminated soil) usually leads to  
309 bacterial toxicity<sup>26-29</sup>. However, these studies were mostly performed on sandy-silty soils<sup>26-29</sup>, poor in  
310 clay, which could influence the mobility of CNTs and their toxicity<sup>72,74</sup>. A study with a soil comparable  
311 to the one used in the present study (clay = 11%, silt = 76%, sand = 13%) also did not observe a  
312 significant effect of CNTs on the bacterial biomass when exposed to 0.2 and 20 mg kg<sup>-1</sup><sup>75</sup>. No  
313 interactive effects between CNTs and metals was highlighted.

314 The toxicity results obtained on earthworms also demonstrated no impact of the addition of CNTs on  
315 the tested parameters (mortality, biomass and developmental stage). Nevertheless, the stress  
316 imposed by metals delayed the development of the earthworms. Here, on average 35% of the  
317 earthworms were still in the juvenile stage. Considering the 6 week-exposure, they should have all  
318 reached the adult stage since *E. fetida* are adult in around 40-60 days. Overall, in the literature,  
319 ecotoxicity studies relative to exposure to metals did not show acute effects on earthworms. Indeed,  
320 *E. fetida* is able to tolerate high concentrations of metals. Spurgeon *et al.* (1994), estimated LC<sub>50</sub>  
321 values of 3670 mg kg<sup>-1</sup> and 745 mg kg<sup>-1</sup> for Pb and Zn, respectively during a 56-day experiment<sup>8</sup>. Here,  
322 the concentrations were [Pb] = 524, 1471, [Zn] = 689, 1825 mg kg<sup>-1</sup> in LC and HC soils, respectively. Zn

323 concentrations, especially in HC soil, could thus have been detrimental for earthworms. However,  
324 the soils used in this current study were richer in silt and clay than Spurgeon's soil (present study: 1  
325 to 6% sand and 94 to 99% silt+clay, Spurgeon soil = 70% sand, 20% kaolin clay), making all the  
326 elements less bioavailable because fixed in clay-humus complexes<sup>76</sup>. In addition, it has been  
327 recognized that the type of clay influences element adsorption and consequently their  
328 bioavailability<sup>77</sup>. Furthermore, the exposure soils used here came from an historically contaminated  
329 area; metals have aged, which could further reduced their bioavailability<sup>65</sup>. As for CNT  
330 contamination, the literature mostly reports no apparent effects on earthworms<sup>33-35</sup>. Consequently,  
331 our results suggest no synergic nor antagonist effects of the co-exposure of CNTs and metals on  
332 earthworm fitness.

333 Opposite to the initial hypothesis, lettuces developed better in soils with higher concentrations of  
334 metals (HC vs. LC). Indeed, many studies reported a slowdown in plant growth parameters when  
335 exposed to metal contamination<sup>16</sup>. In particular, *L. sativa* appears to be poorly tolerant to this type of  
336 contamination ( $LC_{50}$  : Cd = 2.59 mg L<sup>-1</sup>, Zn = 33.88 mg L<sup>-1</sup>)<sup>78</sup>. In this experiment, the increased  
337 development of lettuces in HC soils can be partly explained by the higher amounts of N in  
338 comparison with LC soils (N average: LC = 0.14%, HC = 0.25%). The addition of CNTs had no overall  
339 toxicological effects on the development of the crop plants except in the condition HC0.1 with a 22%  
340 biomass decrease. In the literature, CNT exposure (in single stressor condition) led to controversial  
341 results for *L. sativa* since some studies observed a significant reduction in root and shoot size<sup>51,79</sup>  
342 while another observed no effect on other developmental markers (germination and root length)<sup>80</sup>.  
343 However, for metabolism markers, it appears that the higher the concentration of CNTs, the higher  
344 the concentration of flavonoids in lettuce exposed in HC soil. This is in agreement with a study which  
345 observed a 160% increase in flavonoid production in *Satureja khuzestanica* following a 15-day  
346 exposure to 100 mg.L<sup>-1</sup> of MWCNTs. On the other hand, exposure to lower CNT concentrations in  
347 date palm shoots (0.05 and 0.1 mg L<sup>-1</sup>) did not show significant differences in flavonoid production  
348 compared to the control<sup>81</sup>. As reported in a review paper<sup>82</sup>, several studies have highlighted an

349 induction of flavonoid synthesis in plants in response to abiotic stresses such as high concentrations  
350 of metals in the growing medium<sup>82</sup>. For instance, it has been observed that flavonoid levels increased  
351 after exposure to copper sulphate and cadmium chloride in callus cultures of the legume *Ononis*  
352 *arvensis*<sup>83</sup>. Flavonoids are able to chelate metals, thereby reducing their toxicity to plants<sup>84-86</sup>. To sum  
353 up, in the case of the crop plant, a synergic effect between CNTs and metals was detected and led to  
354 a moderate toxicity.

355

#### 356 **4.2. Controlling factors of contaminant transfer to organisms**

357 For HC soils, the accumulation of Pb and Zn in earthworm tissues was a function of CNT  
358 concentrations in the medium. More generally, this observation was also valid for all other elements  
359 measured in their tissues. Given their properties, CNTs may have adsorbed metals and other  
360 elements on their surface and acted as a vector by facilitating their entry into earthworm tissues *via*  
361 their two routes of exposure: integument and soil ingestion (probably mainly by integument for *E.*  
362 *fetida*). It could be hypothesised that CNTs can damage the integument and/or the digestive tract  
363 cells after ingestion by physical effects leading to an enhanced uptake of the adsorbed metals and  
364 nutrients inside earthworm body like it has been demonstrated for other nanoparticles<sup>87,88</sup>. However,  
365 this effect of CNTs on earthworm elemental content was not observed in LC soils. An explanation to  
366 these results could be related with the low organic matter content of the LC soil which is less  
367 favourable for earthworm feeding and bioturbation activities and thus metal transfer<sup>89</sup>. Finally, Cd  
368 transfer did not respond in the same way as Pb and Zn; it is likely less bioavailable than the other  
369 elements<sup>90</sup>. Indeed, it has been proven that Zn presence can limit Cd absorption for *E. fetida*<sup>91</sup>, but  
370 also Cd compete with Pb in *Aporrectodea caliginosa*<sup>92</sup> and other organisms like collembolan<sup>93</sup>.  
371 Furthermore, Cd has a higher affinity than other elements for metallothioneine which could lead to a  
372 more efficient earthworm detoxification<sup>91,94</sup>.

373 For lettuces, CNT addition in LC soil led to increasing nutrient and metal (Cd and Zn, only)  
374 concentrations in leaves at the highest CNT concentration. The low organic matter content is rather a  
375 favorable factor for nanomaterial transfer to plants<sup>72</sup>. CNTs would adsorb elements at their surface  
376 and be taken up by plant roots leading to a higher accumulation of elements in lettuce leaves<sup>95</sup>.  
377 Alternatively, CNTs could also damage root epidermis and led to enhanced elemental entry<sup>96</sup>. On the  
378 other hand, a very different effect was seen for HC soil. Indeed, in this soil, richer in organic matter  
379 (on average 1.7 richer), no elemental concentration increase was detected in leaves, this is probably  
380 due to the fact that complex interactions between CNTs and organic matter took place in this soil  
381 making CNTs much less bioavailable for plants<sup>72</sup>. Furthermore, a significant decrease in metal  
382 concentrations was seen in plants exposed to HC 0.1. These results might be explained by the  
383 adsorption of metals on the surface of the CNTs according to the CNT concentration in the medium.  
384 Indeed, at low concentrations in the medium (0.1 mg kg<sup>-1</sup>), CNTs tend to be better dispersed in the  
385 soil than at higher concentration (10 mg kg<sup>-1</sup>)<sup>97,98</sup>. Thus, at 0.1 mg kg<sup>-1</sup>, exchange surface of CNTs was  
386 more important because less agglomerated and therefore increased the adsorption of other  
387 compounds such as metals making them less bioavailable for the plants. Likewise, in their study,  
388 Zhang *et al.* (2014) observed that the agglomeration of CNTs reduced the adsorption of some organic  
389 compounds<sup>97</sup>. The reduction in elemental bioavailability induced by CNTs could, in the long term, be  
390 detrimental to the proper development of crop plant or reduce their nutritional values. Indeed, here,  
391 this decrease in elemental concentrations in leaves was correlated with a 22% decrease in lettuce  
392 biomass.

393

394 The results obtained in this study carried out in microcosms, over a relevant duration representing  
395 the life cycle of earthworms and the production of consumable biomass in plants (lettuce leaves),  
396 showed that the co-contamination of CNTs and metals did not lead to acute toxicity. However, stress  
397 symptoms were observed (delayed development in earthworms, increase in stress marker molecules

398 and slowdown in biomass production in lettuce). Furthermore, this study revealed that the addition  
399 of CNTs to a previously contaminated soil can modify the soil-to-organism transfer of elements  
400 present in the soil matrix. The results also demonstrated both synergistic and antagonist effects for  
401 earthworms and lettuce. It is important to mention that it relies on several parameters: soil physico-  
402 chemical parameters (in particular organic matter content), the element considered (and its affinity  
403 for both soil and CNTs) as well as the organisms (including at the species level<sup>71</sup>) and their exposure  
404 pathways (oral ingestion, contact, root uptake) making the prediction of their transfer and long-term  
405 toxicity difficult. Finally, the interactions between these organisms are tight; consequently, the  
406 impact on a single one of these organisms can lead to cascade reactions and have consequences on  
407 the functioning of the entire agrosystem and the ecological services it provides. Given that CNT  
408 introduction in the environment is likely to increase in the future, further studies are urgently  
409 needed to understand the mechanisms of interactions between CNTs and other contaminants and  
410 their impacts on organisms and the associated risks for food safety in order to guarantee their  
411 rational use. In the meanwhile, their intentional introduction in both crop systems and recreational  
412 gardens should be avoided as it could increase the risk of trace element uptake by humans through  
413 consumption of edible parts of crops, possibly leading to health impact if consumed in large amount.

414

## 415 **Acknowledgement**

416 M. Leroy received funding support through the Région Occitanie and Toulouse Federal University,  
417 DECOREM interdisciplinary group (Laboratoire Ecologie Fonctionnelle et Environnement) and EC2CO  
418 program CARBOSTRESS (CNRS-INSU). The authors would like to acknowledge Céline Pernin and  
419 Frédéric Gimbert from LGCgE Lille and Chrono-Environnement for the provision of earthworms and  
420 soils, respectively. We also thank David Baqué, Issam Moussa and Frédéric Julien, R&D engineers on  
421 the FBil (ICP-AES), SHIVA (IRMS) and PAPC (physico-chemical analysis) platforms of Laboratoire

422 Ecologie Fonctionnelle et Environnement. Finally, the authors thank Ariane Chabert, Annie Perrault,  
423 Roman Teisserenc, Perrine Klein and Charles Gers for their valuable technical help.

424

425

426

427

428

429

## 430 Bibliography

- 431 (1) Nicholson, F. A.; Smith, S. R.; Alloway, B. J.; Carlton-Smith, C.; Chambers, B. J. An Inventory of  
432 Heavy Metals Inputs to Agricultural Soils in England and Wales. *Sci. Total Environ.* **2003**, *311*  
433 (1), 205–219. [https://doi.org/10.1016/S0048-9697\(03\)00139-6](https://doi.org/10.1016/S0048-9697(03)00139-6).
- 434 (2) Nagajyoti, P. C.; Lee, K. D.; Sreekanth, T. V. M. Heavy Metals, Occurrence and Toxicity for  
435 Plants: A Review. *Environ. Chem. Lett.* **2010**, *8* (3), 199–216. [https://doi.org/10.1007/s10311-](https://doi.org/10.1007/s10311-010-0297-8)  
436 [010-0297-8](https://doi.org/10.1007/s10311-010-0297-8).
- 437 (3) *Toxic Metals in Soil-Plant Systems*; Ross, S., Ed.; Wiley: Chichester, West Sussex, England ; New  
438 York, 1994.
- 439 (4) Joško, I.; Oleszczuk, P. The Influence of ZnO and TiO<sub>2</sub> Nanoparticles on the Toxicity of Sewage  
440 Sludges. *Environ. Sci. Process. Impacts* **2012**, *15* (1), 296–306.  
441 <https://doi.org/10.1039/C2EM30653K>.
- 442 (5) Baath, E. Effects of Heavy Metals in Soil on Microbial Processes and Populations (a Review).  
443 *Water. Air. Soil Pollut.* **1989**, *47* (3–4), 335–379. <https://doi.org/10.1007/BF00279331>.
- 444 (6) Giller, K. E.; Witter, E.; Mcgrath, S. P. Toxicity of Heavy Metals to Microorganisms and  
445 Microbial Processes in Agricultural Soils: A Review. *Soil Biol. Biochem.* **1998**, *30* (10), 1389–  
446 1414. [https://doi.org/10.1016/S0038-0717\(97\)00270-8](https://doi.org/10.1016/S0038-0717(97)00270-8).
- 447 (7) Neuhauser, E. F.; Loehr, R. C.; Milligan, D. L.; Malecki, M. R. Toxicity of Metals to the  
448 Earthworm *Eisenia Fetida*. *Biol. Fertil. Soils* **1985**, *1* (3), 149–152.  
449 <https://doi.org/10.1007/BF00301782>.
- 450 (8) Spurgeon, D. J.; Hopkin, S. P.; Jones, D. T. Effects of Cadmium, Copper, Lead and Zinc on  
451 Growth, Reproduction and Survival of the Earthworm *Eisenia Fetida* (Savigny): Assessing the  
452 Environmental Impact of Point-Source Metal Contamination in Terrestrial Ecosystems.  
453 *Environ. Pollut.* **1994**, *84* (2), 123–130. [https://doi.org/10.1016/0269-7491\(94\)90094-9](https://doi.org/10.1016/0269-7491(94)90094-9).
- 454 (9) van Gestel, C. A. M.; Dirven-van Breemen, E. M.; Baerselman, R. Accumulation and Elimination  
455 of Cadmium, Chromium and Zinc and Effects on Growth and Reproduction in *Eisenia Andrei*  
456 (*Oligochaeta*, Annelida). *Sci. Total Environ.* **1993**, *134*, 585–597.  
457 [https://doi.org/10.1016/S0048-9697\(05\)80061-0](https://doi.org/10.1016/S0048-9697(05)80061-0).
- 458 (10) Cikutovic, M. A.; Fitzpatrick, L. C.; Venables, B. J.; Goven, A. J. Sperm Count in Earthworms  
459 (*Lumbricus Terrestris*) as a Biomarker for Environmental Toxicology: Effects of Cadmium and  
460 Chlordane. *Environ. Pollut.* **1993**, *81* (2), 123–125. [https://doi.org/10.1016/0269-](https://doi.org/10.1016/0269-7491(93)90076-Z)  
461 [7491\(93\)90076-Z](https://doi.org/10.1016/0269-7491(93)90076-Z).

- 462 (11) Abbasi, S. A.; Soni, R. Stress-induced Enhancement of Reproduction in Earthworm  
463 Octochaetus Pattoni Exposed to Chromium (vi) and Mercury (ii)— Implications in  
464 Environmental Management. *Int. J. Environ. Stud.* **1983**, *22* (1), 43–47.  
465 <https://doi.org/10.1080/00207238308710100>.
- 466 (12) Spurgeon, D. J.; Hopkin, S. P. Comparisons of Metal Accumulation and Excretion Kinetics in  
467 Earthworms (*Eisenia Fetida*) Exposed to Contaminated Field and Laboratory Soils. *Appl. Soil*  
468 *Ecol.* **1999**, *11* (2), 227–243. [https://doi.org/10.1016/S0929-1393\(98\)00150-4](https://doi.org/10.1016/S0929-1393(98)00150-4).
- 469 (13) Bengtsson, G.; Gunnarsson, T.; Rundgren, S. Effects of Metal Pollution on the  
470 Earthworm *Dendrobaena Rubida* (Sav.) in Acidified Soils. *Water. Air. Soil Pollut.* **1986**, *28* (3),  
471 361–383. <https://doi.org/10.1007/BF00583501>.
- 472 (14) van Gestel, C. A. M.; van Dis, W. A.; van Breemen, E. M.; Sparenburg, P. M. Development of a  
473 Standardized Reproduction Toxicity Test with the Earthworm Species *Eisenia Fetida* Andrei  
474 Using Copper, Pentachlorophenol, and 2,4-Dichloroaniline. *Ecotoxicol. Environ. Saf.* **1989**, *18*  
475 (3), 305–312. [https://doi.org/10.1016/0147-6513\(89\)90024-9](https://doi.org/10.1016/0147-6513(89)90024-9).
- 476 (15) Probst, A.; Liu, H.; Fanjul, M.; Liao, B.; Hollande, E. Response of *Vicia Faba* L. to Metal Toxicity  
477 on Mine Tailing Substrate: Geochemical and Morphological Changes in Leaf and Root. *Environ.*  
478 *Exp. Bot.* **2009**, *66* (2), 297–308. <https://doi.org/10.1016/j.envexpbot.2009.02.003>.
- 479 (16) Chibuike, G. U.; Obiora, S. C. Heavy Metal Polluted Soils: Effect on Plants and Bioremediation  
480 Methods.
- 481 (17) Yuan, S.-J.; Dai, X.-H. Sewage Sludge-Based Functional Nanomaterials: Development and  
482 Applications. *Environ. Sci. Nano* **2017**, *4* (1), 17–26. <https://doi.org/10.1039/C6EN00177G>.
- 483 (18) Inglezakis, V. J.; Zorpas, A. A.; Karagiannidis, A.; Samaras, P.; Voukkali, I.; Sklari, S. EUROPEAN  
484 UNION LEGISLATION ON SEWAGE SLUDGE MANAGEMENT. *Fresenius Environ. Bull.* **2014**, *23*  
485 (2), 5.
- 486 (19) Boehm, H. P.; Clauss, A.; Fischer, G. O.; Hofmann, U. Dünnte Kohlenstoff-Folien. *Z. Für*  
487 *Naturforschung B* **1962**, *17* (3), 150–153. <https://doi.org/10.1515/znb-1962-0302>.
- 488 (20) Trindade, T. J. F. Banfield & A. Navrotsky (Editors) Nanoparticles and the Environment.  
489 Mineralogical Society of America, Washington, D.C., 2001, 350 Pp. Price US \$28. ISBN 0-  
490 939950-56-1. *Clay Miner.* **2003**, *38* (2), 255–255.  
491 <https://doi.org/10.1017/S0009855800013376>.
- 492 (21) Vance, M. E.; Kuiken, T.; Vejerano, E. P.; McGinnis, S. P.; Hochella, M. F.; Hull, D. R.  
493 Nanotechnology in the Real World: Redeveloping the Nanomaterial Consumer Products  
494 Inventory. *Beilstein J. Nanotechnol.* **2015**, *6* (1), 1769–1780.  
495 <https://doi.org/10.3762/bjnano.6.181>.
- 496 (22) Larue, C. Impact de nanoparticules de TiO<sub>2</sub> et de nanotubes de carbone sur les végétaux. 297.
- 497 (23) Gottschalk, F.; Sun, T.; Nowack, B. Environmental Concentrations of Engineered  
498 Nanomaterials: Review of Modeling and Analytical Studies. *Environ. Pollut.* **2013**, *181*, 287–  
499 300. <https://doi.org/10.1016/j.envpol.2013.06.003>.
- 500 (24) Holden, P. A.; Klaessig, F.; Turco, R. F.; Priester, J. H.; Rico, C. M.; Avila-Arias, H.; Mortimer, M.;  
501 Pacpaco, K.; Gardea-Torresdey, J. L. Evaluation of Exposure Concentrations Used in Assessing  
502 Manufactured Nanomaterial Environmental Hazards: Are They Relevant? *Environ. Sci. Technol.*  
503 **2014**, *48* (18), 10541–10551. <https://doi.org/10.1021/es502440s>.
- 504 (25) Rudakiya, D.; Patel, Y.; Chhaya, U.; Gupte, A. Carbon Nanotubes in Agriculture: Production,  
505 Potential, and Prospects. In *Nanotechnology for Agriculture: Advances for Sustainable*  
506 *Agriculture*; Panpatte, D. G., Jhala, Y. K., Eds.; Springer: Singapore, 2019; pp 121–130.
- 507 (26) Chung, H.; Son, Y.; Yoon, T. K.; Kim, S.; Kim, W. The Effect of Multi-Walled Carbon Nanotubes  
508 on Soil Microbial Activity. *Ecotoxicol. Environ. Saf.* **2011**, *74* (4), 569–575.  
509 <https://doi.org/10.1016/j.ecoenv.2011.01.004>.
- 510 (27) Jin, L.; Son, Y.; Yoon, T. K.; Kang, Y. J.; Kim, W.; Chung, H. High Concentrations of Single-Walled  
511 Carbon Nanotubes Lower Soil Enzyme Activity and Microbial Biomass. *Ecotoxicol. Environ. Saf.*  
512 **2013**, *88*, 9–15. <https://doi.org/10.1016/j.ecoenv.2012.10.031>.

- 513 (28) Jin, L.; Son, Y.; DeForest, J. L.; Kang, Y. J.; Kim, W.; Chung, H. Single-Walled Carbon Nanotubes  
514 Alter Soil Microbial Community Composition. *Sci. Total Environ.* **2014**, *466–467*, 533–538.  
515 <https://doi.org/10.1016/j.scitotenv.2013.07.035>.
- 516 (29) Ge, Y.; Priester, J. H.; Mortimer, M.; Chang, C. H.; Ji, Z.; Schimel, J. P.; Holden, P. A. Long-Term  
517 Effects of Multiwalled Carbon Nanotubes and Graphene on Microbial Communities in Dry Soil.  
518 *Environ. Sci. Technol.* **2016**, *50* (7), 3965–3974. <https://doi.org/10.1021/acs.est.5b05620>.
- 519 (30) Kerfahi, D.; Tripathi, B. M.; Singh, D.; Kim, H.; Lee, S.; Lee, J.; Adams, J. M. Effects of  
520 Functionalized and Raw Multi-Walled Carbon Nanotubes on Soil Bacterial Community  
521 Composition. *PLOS ONE* **2015**, *10* (3), e0123042.  
522 <https://doi.org/10.1371/journal.pone.0123042>.
- 523 (31) Hu, C. W.; Zhang, L. J.; Wang, W. L.; Cui, Y. B.; Li, M. Evaluation of the Combined Toxicity of  
524 Multi-Walled Carbon Nanotubes and Sodium Pentachlorophenate on the Earthworm *Eisenia*  
525 *Fetida* Using Avoidance Bioassay and Comet Assay. *Soil Biol. Biochem.* **2014**, *70*, 123–130.  
526 <https://doi.org/10.1016/j.soilbio.2013.12.018>.
- 527 (32) Scott-Fordsmand, J. J.; Krogh, P. H.; Schaefer, M.; Johansen, A. The Toxicity Testing of Double-  
528 Walled Nanotubes-Contaminated Food to *Eisenia Veneta* Earthworms. *Ecotoxicol. Environ.*  
529 *Saf.* **2008**, *71* (3), 616–619. <https://doi.org/10.1016/j.ecoenv.2008.04.011>.
- 530 (33) Petersen, E. J.; Pinto, R. A.; Landrum, P. F.; Weber, Jr. Influence of Carbon Nanotubes on  
531 Pyrene Bioaccumulation from Contaminated Soils by Earthworms. *Environ. Sci. Technol.* **2009**,  
532 *43* (11), 4181–4187. <https://doi.org/10.1021/es803023a>.
- 533 (34) Li, S.; Irin, F.; Atore, F. O.; Green, M. J.; Cañas-Carrell, J. E. Determination of Multi-Walled  
534 Carbon Nanotube Bioaccumulation in Earthworms Measured by a Microwave-Based Detection  
535 Technique. *Sci. Total Environ.* **2013**, *445–446*, 9–13.  
536 <https://doi.org/10.1016/j.scitotenv.2012.12.037>.
- 537 (35) Calisi, A.; Grimaldi, A.; Leomanni, A.; Lionetto, M. G.; Dondero, F.; Schettino, T.  
538 Multibiomarker Response in the Earthworm *Eisenia Fetida* as Tool for Assessing Multi-Walled  
539 Carbon Nanotube Ecotoxicity. *Ecotoxicology* **2016**, *25* (4), 677–687.  
540 <https://doi.org/10.1007/s10646-016-1626-x>.
- 541 (36) Petersen, E. J.; Pinto, R. A.; Zhang, L.; Huang, Q.; Landrum, P. F.; Weber, W. J. Effects of  
542 Polyethyleneimine-Mediated Functionalization of Multi-Walled Carbon Nanotubes on  
543 Earthworm Bioaccumulation and Sorption by Soils. *Environ. Sci. Technol.* **2011**, *45* (8), 3718–  
544 3724. <https://doi.org/10.1021/es103004r>.
- 545 (37) Eom, H.-J.; Roca, C. P.; Roh, J.-Y.; Chatterjee, N.; Jeong, J.-S.; Shim, I.; Kim, H.-M.; Kim, P.-J.;  
546 Choi, K.; Giralt, F.; Choi, J. A Systems Toxicology Approach on the Mechanism of Uptake and  
547 Toxicity of MWCNT in *Caenorhabditis Elegans*. *Chem. Biol. Interact.* **2015**, *239*, 153–163.  
548 <https://doi.org/10.1016/j.cbi.2015.06.031>.
- 549 (38) Liné, C.; Larue, C.; Flahaut, E. Carbon Nanotubes : Impacts and Behaviour in the Terrestrial  
550 Ecosystem - A Review. *Carbon* **2017**, *123*, 767–785.  
551 <https://doi.org/10.1016/j.carbon.2017.07.089>.
- 552 (39) Oleszczuk, P.; Joško, I.; Xing, B. The Toxicity to Plants of the Sewage Sludges Containing  
553 Multiwalled Carbon Nanotubes. *J. Hazard. Mater.* **2011**, *186* (1), 436–442.  
554 <https://doi.org/10.1016/j.jhazmat.2010.11.028>.
- 555 (40) Ratnikova, T. A.; Podila, R.; Rao, A. M.; Taylor, A. G. Tomato Seed Coat Permeability to  
556 Selected Carbon Nanomaterials and Enhancement of Germination and Seedling Growth. *Sci.*  
557 *World J.* **2015**, *2015*. <https://doi.org/10.1155/2015/419215>.
- 558 (41) Lahiani, M. H.; Chen, J.; Irin, F.; Puretzky, A. A.; Green, M. J.; Khodakovskaya, M. V. Interaction  
559 of Carbon Nanohorns with Plants: Uptake and Biological Effects. *Carbon* **2015**, *81* (1), 607–  
560 619. <https://doi.org/10.1016/j.carbon.2014.09.095>.
- 561 (42) Lahiani, M. H.; Dervishi, E.; Ivanov, I.; Chen, J.; Khodakovskaya, M. Comparative Study of Plant  
562 Responses to Carbon-Based Nanomaterials with Different Morphologies. *Nanotechnology*  
563 **2016**, *27* (26), 1–13. <https://doi.org/10.1088/0957-4484/27/26/265102>.



- 564 (43) Tripathi, S.; Kumar Sonkar, S.; Sarkar, S. Growth Stimulation of Gram ( *Cicer Arietinum* ) Plant  
565 by Water Soluble Carbon Nanotubes. *Nanoscale* **2011**, *3* (3), 1176–1181.  
566 <https://doi.org/10.1039/CONR00722F>.
- 567 (44) Miralles, P.; Johnson, E.; Church, T. L.; Harris, A. T. Multiwalled Carbon Nanotubes in Alfalfa  
568 and Wheat: Toxicology and Uptake. *J. R. Soc. Interface* **2012**, *9* (77), 3514–3527.  
569 <https://doi.org/10.1098/rsif.2012.0535>.
- 570 (45) Villagarcia, H.; Dervishi, E.; De Silva, K.; Biris, A. S.; Khodakovskaya, M. V. Surface Chemistry of  
571 Carbon Nanotubes Impacts the Growth and Expression of Water Channel Protein in Tomato  
572 Plants. *Small* **2012**, *8* (15), 2328–2334. <https://doi.org/10.1002/smll.201102661>.
- 573 (46) Martínez-Ballesta, M. C.; Zapata, L.; Chalbi, N.; Carvajal, M. Multiwalled Carbon Nanotubes  
574 Enter Broccoli Cells Enhancing Growth and Water Uptake of Plants Exposed to Salinity. *J.*  
575 *Nanobiotechnology* **2016**, *14* (1), 42. <https://doi.org/10.1186/s12951-016-0199-4>.
- 576 (47) Khodakovskaya, M. V.; Kim, B.-S.; Kim, J. N.; Alimohammadi, M.; Dervishi, E.; Mustafa, T.;  
577 Cernigla, C. E. Carbon Nanotubes as Plant Growth Regulators: Effects on Tomato Growth,  
578 Reproductive System, and Soil Microbial Community. *Small* **2013**, *9* (1), 115–123.  
579 <https://doi.org/10.1002/smll.201201225>.
- 580 (48) Lin, C.; Fugetsu, B.; Su, Y.; Watari, F. Studies on Toxicity of Multi-Walled Carbon Nanotubes on  
581 Arabidopsis T87 Suspension Cells. *J. Hazard. Mater.* **2009**, *170* (2–3), 578–583.  
582 <https://doi.org/10.1016/j.jhazmat.2009.05.025>.
- 583 (49) Shen, C.-X.; Zhang, Q.-F.; Li, J.; Bi, F.-C.; Yao, N. Induction of Programmed Cell Death in  
584 Arabidopsis and Rice by Single-Wall Carbon Nanotubes. *Am. J. Bot.* **2010**, *97* (10), 1602–1609.  
585 <https://doi.org/10.3732/ajb.1000073>.
- 586 (50) Mondal, A.; Basu, R.; Das, S.; Nandy, P. Beneficial Role of Carbon Nanotubes on Mustard Plant  
587 Growth: An Agricultural Prospect. *J. Nanoparticle Res.* **2011**, *13* (10), 4519–4528.  
588 <https://doi.org/10.1007/s11051-011-0406-z>.
- 589 (51) Begum, P.; Fugetsu, B. Phytotoxicity of Multi-Walled Carbon Nanotubes on Red Spinach  
590 (*Amaranthus Tricolor* L) and the Role of Ascorbic Acid as an Antioxidant. *J. Hazard. Mater.*  
591 **2012**, *243*, 212–222. <https://doi.org/10.1016/j.jhazmat.2012.10.025>.
- 592 (52) Carvalho, R. N.; Arukwe, A.; Ait-Aissa, S.; Bado-Nilles, A.; Balzamo, S.; Baun, A.; Belkin, S.;  
593 Blaha, L.; Brion, F.; Conti, D.; Creusot, N.; Essig, Y.; Ferrero, V. E.; Flander-Putrlle, V.; Fürhacker,  
594 M.; Grillari-Voglauer, R.; Hogstrand, C.; Jonas, A.; Kharlyngdoh, J. B.; Loos, R.; Lundebye, A.-K.;  
595 Modig, C.; Olsson, P. E.; Pillai, S.; Polak, N.; Potalivo, M.; Sanchez, W.; Schifferli, A.; Schirmer,  
596 K.; Sforzini, S.; Stürzenbaum, S. R.; Softeland, L.; Turk, V.; Viarengo, A.; Werner, I.; Yagur-Kroll,  
597 S.; Zounkova, R.; Lettieri, T. Mixtures of Chemical Pollutants at European Legislation Safety  
598 Concentrations: How Safe Are They? *Toxicol. Sci.* **2014**, No. July.  
599 <https://doi.org/10.1093/toxsci/kfu118>.
- 600 (53) Ji, Y.; Zhou, Y.; Ma, C.; Feng, Y.; Hao, Y.; Rui, Y.; Wu, W.; Gui, X.; Le, V. N.; Han, Y.; Wang, Y.;  
601 Xing, B.; Liu, L.; Cao, W. Jointed Toxicity of TiO<sub>2</sub> NPs and Cd to Rice Seedlings: NPs Alleviated  
602 Cd Toxicity and Cd Promoted NPs Uptake. *Plant Physiol. Biochem. PPB* **2017**, *110*, 82–93.  
603 <https://doi.org/10.1016/j.plaphy.2016.05.010>.
- 604 (54) Cai, F.; Wu, X.; Zhang, H.; Shen, X.; Zhang, M.; Chen, W.; Gao, Q.; White, J. C.; Tao, S.; Wang, X.  
605 Impact of TiO<sub>2</sub> Nanoparticles on Lead Uptake and Bioaccumulation in Rice (*Oryza Sativa* L.).  
606 *NanoImpact* **2017**, *5*, 101–108. <https://doi.org/10.1016/j.impact.2017.01.006>.
- 607 (55) Rillig, M. C.; Ryo, M.; Lehmann, A.; Aguilar-Trigueros, C. A.; Buchert, S.; Wulf, A.; Iwasaki, A.;  
608 Roy, J.; Yang, G. The Role of Multiple Global Change Factors in Driving Soil Functions and  
609 Microbial Biodiversity. *Science* **2019**, *366* (6467), 886–890.  
610 <https://doi.org/10.1126/science.aay2832>.
- 611 (56) Chen, X.; Wang, J.; Hayat, K.; Zhang, D.; Zhou, P. Small Structures with Big Impact: Multi-  
612 Walled Carbon Nanotubes Enhanced Remediation Efficiency in Hyperaccumulator *Solanum*  
613 *Nigrum* L. under Cadmium and Arsenic Stress. *Chemosphere* **2021**, *276*, 130130.  
614 <https://doi.org/10.1016/j.chemosphere.2021.130130>.

- 615 (57) Chang, X.; Song, Z.; Xu, Y.; Gao, M. Effects of Carbon Nanotubes on Growth of Wheat  
616 Seedlings and Cd Uptake. *Chemosphere* **2020**, *240*, 124931.
- 617 (58) Rao, G. P.; Lu, C.; Su, F. Sorption of Divalent Metal Ions from Aqueous Solution by Carbon  
618 Nanotubes: A Review. *Sep. Purif. Technol.* **2007**, *58* (1), 224–231.  
619 <https://doi.org/10.1016/j.seppur.2006.12.006>.
- 620 (59) Abbas, A.; Al-Amer, A. M.; Laoui, T.; Al-Marri, M. J.; Nasser, M. S.; Khraisheh, M.; Atieh, M. A.  
621 Heavy Metal Removal from Aqueous Solution by Advanced Carbon Nanotubes: Critical Review  
622 of Adsorption Applications. *Sep. Purif. Technol.* **2016**, *157*, 141–161.  
623 <https://doi.org/10.1016/j.seppur.2015.11.039>.
- 624 (60) Addo Ntim, S.; Mitra, S. Adsorption of Arsenic on Multiwall Carbon Nanotube–Zirconia  
625 Nanohybrid for Potential Drinking Water Purification. *J. Colloid Interface Sci.* **2012**, *375* (1),  
626 154–159. <https://doi.org/10.1016/j.jcis.2012.01.063>.
- 627 (61) Tofighy, M. A.; Mohammadi, T. Adsorption of Divalent Heavy Metal Ions from Water Using  
628 Carbon Nanotube Sheets. *J. Hazard. Mater.* **2011**, *185*, 140–147.  
629 <https://doi.org/10.1016/j.jhazmat.2010.09.008>.
- 630 (62) Moradi, O. The Removal of Ions by Functionalized Carbon Nanotube: Equilibrium, Isotherms  
631 and Thermodynamic Studies. *Chem. Biochem. Eng. Q.* **2011**, *25* (2), 229–240.
- 632 (63) Moradi, O.; Zare, K. Adsorption of Pb(II), Cd(II) and Cu(II) Ions in Aqueous Solution on SWCNTs  
633 and SWCNT –COOH Surfaces: Kinetics Studies. *Fuller. Nanotub. Carbon Nanostructures* **2011**,  
634 *19* (7), 628–652. <https://doi.org/10.1080/1536383X.2010.504955>.
- 635 (64) Scheu, S. Effects of Earthworms on Plant Growth: Patterns and Perspectives: The 7th  
636 International Symposium on Earthworm Ecology · Cardiff · Wales · 2002. *Pedobiologia* **2003**,  
637 *47* (5), 846–856. <https://doi.org/10.1078/0031-4056-00270>.
- 638 (65) Lock, K.; Janssen, C. R. Influence of Aging on Metal Availability in Soils. *Rev. Env. Contam*  
639 *Toxicol* **2003**, *178*, 1–21.
- 640 (66) Fritsch, C.; Cœurdassier, M.; Giraudoux, P.; Raoul, F.; Douay, F.; Rieffel, D.; Vaufléury, A. de;  
641 Scheifler, R. Spatially Explicit Analysis of Metal Transfer to Biota: Influence of Soil  
642 Contamination and Landscape. *PLOS ONE* **2011**, *6* (5), e20682.  
643 <https://doi.org/10.1371/journal.pone.0020682>.
- 644 (67) Lichtenthaler, H. K. [34] Chlorophylls and Carotenoids: Pigments of Photosynthetic  
645 Biomembranes. *Methods Enzymol.* **1987**, *148*, 350–382. [https://doi.org/10.1016/0076-6879\(87\)48036-1](https://doi.org/10.1016/0076-6879(87)48036-1).
- 647 (68) Ainsworth, E. A.; Gillespie, K. M. Estimation of Total Phenolic Content and Other Oxidation  
648 Substrates in Plant Tissues Using Folin–Ciocalteu Reagent. *Nat. Protoc.* **2007**, *2* (4), 875–877.  
649 <https://doi.org/10.1038/nprot.2007.102>.
- 650 (69) Settharaksa, S.; Madaka, F.; Sueree, L.; Kittiwisut, S.; Sakunpak, A.; Moton, C.; Charoenchai, L.  
651 Effect of Solvent Types on Phenolic, Flavonoid Contents and Antioxidant Activities of *Syzygium*  
652 *Gratum* (Wight) S.N. *Int. J. Pharm. Pharm. Sci.* **2014**, *6* (2), 114–116.
- 653 (70) El Euch, S. K.; Bouajila, J.; Bouzouita, N. Chemical Composition, Biological and Cytotoxic  
654 Activities of *Cistus Salviifolius* Flower Buds and Leaves Extracts. *Ind. Crops Prod.* **2015**, *76*,  
655 1100–1105. <https://doi.org/10.1016/J.INDCROP.2015.08.033>.
- 656 (71) Liné, C.; Manent, F.; Wolinski, A.; Flahaut, E.; Larue, C. Comparative Study of Response of Four  
657 Crop Species Exposed to Carbon Nanotube Contamination in Soil. *Chemosphere* **2021**, *274*,  
658 129854. <https://doi.org/10.1016/j.chemosphere.2021.129854>.
- 659 (72) Larue, C.; Baratange, C.; Vantelon, D.; Khodja, H.; Surblé, S.; Elger, A.; Carrière, M. Influence of  
660 Soil Type on TiO<sub>2</sub> Nanoparticle Fate in an Agro-Ecosystem. *Sci. Total Environ.* **2018**, *630*, 609–  
661 617. <https://doi.org/10.1016/j.scitotenv.2018.02.264>.
- 662 (73) Welp, G. Inhibitory Effects of the Total and Water-Soluble Concentrations of Nine Different  
663 Metals on the Dehydrogenase Activity of a Loess Soil. *Biol. Fertil. Soils* **1999**, *30* (1), 132–139.  
664 <https://doi.org/10.1007/s003740050599>.

- 665 (74) Cornelis, G.; Hund-Rinke, K.; Kuhlbusch, T.; Brink, N. van den; Nickel, C. Fate and Bioavailability  
666 of Engineered Nanoparticles in Soils: A Review. *Crit. Rev. Environ. Sci. Technol.* **2014**, *44* (24),  
667 2720–2764. <https://doi.org/10.1080/10643389.2013.829767>.
- 668 (75) Shan, J.; Ji, R.; Yu, Y.; Xie, Z.; Yan, X. Biochar, Activated Carbon, and Carbon Nanotubes Have  
669 Different Effects on Fate of 14 C-Catechol and Microbial Community in Soil. *Sci. Rep.* **2015**, *5*  
670 (October), 1–11. <https://doi.org/10.1038/srep16000>.
- 671 (76) Hatton, D.; Pickering, W. F. The Effect of PH on the Retention of Cu, Pb, Zu and Cd by Clay-  
672 Humic Acid Mixtures. *Water. Air. Soil Pollut.* **1980**, *14* (1), 13–21.  
673 <https://doi.org/10.1007/BF00291822>.
- 674 (77) Uddin, M. K. A Review on the Adsorption of Heavy Metals by Clay Minerals, with Special Focus  
675 on the Past Decade. *Chem. Eng. J.* **2017**, *308*, 438–462.  
676 <https://doi.org/10.1016/j.cej.2016.09.029>.
- 677 (78) Diaz, L. M. C.; Campos, C.; Oron, G. Toxicity Effects of Selected Heavy Metals on Lactuca Sativa  
678 and Hydra Viridissima Used for Sustainable Crop Production. *Environ. Manag. Sustain. Dev.*  
679 **2018**, *7* (3), 82–101. <https://doi.org/10.5296/emsd.v7i3.13446>.
- 680 (79) Ikhtiar, R.; Begum, P.; Watari, F.; Fugetsu, B. Toxic Effect of Multiwalled Carbon Nanotubes on  
681 Lettuce (*Lactuca Sativa*). *Nano Biomed.* **2013**, *5* (1), 18–24.  
682 <https://doi.org/10.11344/nano.5.18>.
- 683 (80) Lin, D.; Xing, B. Phytotoxicity of Nanoparticles: Inhibition of Seed Germination and Root  
684 Growth. *Environ. Pollut.* **2007**, *150* (2), 243–250.  
685 <https://doi.org/10.1016/j.envpol.2007.01.016>.
- 686 (81) Taha, R. A.; Hassan, M. M.; Ibrahim, E. A.; Abou Baker, N. H.; Shaaban, E. A. Carbon Nanotubes  
687 Impact on Date Palm in Vitro Cultures. *Plant Cell Tissue Organ Cult. PCTOC* **2016**, *127* (2), 525–  
688 534. <https://doi.org/10.1007/s11240-016-1058-6>.
- 689 (82) Samanta, A.; Das, G.; Das, S. Roles of Flavonoids in Plants. *Int. J. Pharm. Sci. Technol.* **2011**, *6*,  
690 12–35.
- 691 (83) Keilig, K.; Ludwig-Müller, J. Effect of flavonoids on heavy metal tolerance in *Arabidopsis*  
692 *thaliana* seedlings.
- 693 (84) Yamasaki, H.; Sakihama, Y.; Ikehara, N. Flavonoid-Peroxidase Reaction as a Detoxification  
694 Mechanism of Plant Cells against H<sub>2</sub>O<sub>2</sub>. *Plant Physiol.* **1997**, *115* (4), 1405–1412.  
695 <https://doi.org/10.1104/pp.115.4.1405>.
- 696 (85) Jansen, M. A. K.; Noort, R. E. van den; Tan, M. Y. A.; Prinsen, E.; Lagrimini, L. M.; Thorneley, R.  
697 N. F. Phenol-Oxidizing Peroxidases Contribute to the Protection of Plants from Ultraviolet  
698 Radiation Stress. *Plant Physiol.* **2001**, *126* (3), 1012–1023.  
699 <https://doi.org/10.1104/pp.126.3.1012>.
- 700 (86) Phenolic Compounds and Their Antioxidant Activity in Plants Growing under Heavy Metal  
701 Stress. *Pol. J. Environ. Stud.* *15* (4), 523–530.
- 702 (87) Adeel, M.; Ma, C.; Ullah, S.; Rizwan, M.; Hao, Y.; Chen, C.; Jilani, G.; Shakoore, N.; Li, M.; Wang,  
703 L.; Tsang, D. C. W.; Rinklebe, J.; Rui, Y.; Xing, B. Exposure to Nickel Oxide Nanoparticles  
704 Insinuates Physiological, Ultrastructural and Oxidative Damage: A Life Cycle Study on *Eisenia*  
705 *Fetida*. *Environ. Pollut.* **2019**, *254*, 113032. <https://doi.org/10.1016/j.envpol.2019.113032>.
- 706 (88) Świątek, Z. M.; Woźnicka, O.; Bednarska, A. J. Unravelling the ZnO-NPs Mechanistic Pathway:  
707 Cellular Changes and Altered Morphology in the Gastrointestinal Tract of the Earthworm  
708 *Eisenia Andrei*. *Ecotoxicol. Environ. Saf.* **2020**, *196*, 110532.  
709 <https://doi.org/10.1016/j.ecoenv.2020.110532>.
- 710 (89) Capowiez, Y.; Gilbert, F.; Vallat, A.; Poggiale, J.-C.; Bonzom, J.-M. Depth Distribution of Soil  
711 Organic Matter and Burrowing Activity of Earthworms—Mesocosm Study Using X-Ray  
712 Tomography and Luminophores. *Biol. Fertil. Soils* **2021**, *57* (3), 337–346.  
713 <https://doi.org/10.1007/s00374-020-01536-y>.
- 714 (90) Farrah, H.; Hatton, D.; Pickering, W. F. The Affinity of Metal Ions for Clay Surfaces. *Chem. Geol.*  
715 **1980**, *28*, 55–68. [https://doi.org/10.1016/0009-2541\(80\)90035-2](https://doi.org/10.1016/0009-2541(80)90035-2).

- 716 (91) Demuyne, S.; Grumiaux, F.; Mottier, V.; Schikorski, D.; Lemièrre, S.; Leprêtre, A. Cd/Zn  
717 Exposure Interactions on Metallothionein Response in Eisenia Fetida (Annelida, Oligochaeta).  
718 *Comp. Biochem. Physiol. Part C Toxicol. Pharmacol.* **2007**, *145* (4), 658–668.  
719 <https://doi.org/10.1016/j.cbpc.2007.03.001>.
- 720 (92) Khalil, M. A.; Abdel-Lateif, H. M.; Bayoumi, B. M.; van Straalen, N. M. Analysis of Separate and  
721 Combined Effects of Heavy Metals on the Growth of Aporectodea Caliginosa (Oligochaeta;  
722 Annelida), Using the Toxic Unit Approach. *Appl. Soil Ecol.* **1996**, *4* (3), 213–219.  
723 [https://doi.org/10.1016/S0929-1393\(96\)00115-1](https://doi.org/10.1016/S0929-1393(96)00115-1).
- 724 (93) Bur, T.; Crouau, Y.; Bianco, A.; Gandois, L.; Probst, A. Toxicity of Pb and of Pb/Cd Combination  
725 on the Springtail Folsomia Candida in Natural Soils: Reproduction, Growth and  
726 Bioaccumulation as Indicators. *Sci. Total Environ.* **2012**, *414*, 187–197.  
727 <https://doi.org/10.1016/j.scitotenv.2011.10.029>.
- 728 (94) Kowald, G. R.; Stürzenbaum, S. R.; Blindauer, C. A. Earthworm Lumbricus Rubellus MT-2: Metal  
729 Binding and Protein Folding of a True Cadmium-MT. *Int. J. Mol. Sci.* **2016**, *17* (1), 65.  
730 <https://doi.org/10.3390/ijms17010065>.
- 731 (95) Larue, C.; Pinault, M.; Czarny, B.; Georgin, D.; Jaillard, D.; Bendiab, N.; Mayne-L’Hermite, M.;  
732 Taran, F.; Dive, V.; Carriere, M. Quantitative Evaluation of Multi-Walled Carbon Nanotube  
733 Uptake in Wheat and Rapeseed. *J. Hazard. Mater.* **2012**, *227*, 155–163.  
734 <https://doi.org/10.1016/j.jhazmat.2012.05.033>.
- 735 (96) Wild, E.; Jones, K. C. Novel Method for the Direct Visualization of in Vivo Nanomaterials and  
736 Chemical Interactions in Plants. *Environ. Sci. Technol.* **2009**, *43* (14), 5290–5294.  
737 <https://doi.org/10.1021/es900065h>.
- 738 (97) Zhang, S.; Shao, T.; Bekaroglu, S. S. K.; Karanfil, T. The Impacts of Aggregation and Surface  
739 Chemistry of Carbon Nanotubes on the Adsorption of Synthetic Organic Compounds. *Environ.*  
740 *Sci. Technol.* **2009**, *43* (15), 5719–5725. <https://doi.org/10.1021/es900453e>.
- 741 (98) Petosa, A. R.; Jaisi, D. P.; Quevedo, I. R.; Elimelech, M.; Tufenkji, N. Aggregation and  
742 Deposition of Engineered Nanomaterials in Aquatic Environments: Role of Physicochemical  
743 Interactions. *Environ. Sci. Technol.* **2010**, *44* (17), 6532–6549.  
744 <https://doi.org/10.1021/es100598h>.
- 745