



HAL
open science

Description of two new species and one new genus of American Cerambycidae, and notes on *Amphicnaeia nigra* Galileo & Martins (Coleoptera)

Antonio Santos Silva

► **To cite this version:**

Antonio Santos Silva. Description of two new species and one new genus of American Cerambycidae, and notes on *Amphicnaeia nigra* Galileo & Martins (Coleoptera). *Faunitaxys*, 2022, 10 (40), pp.1-8. hal-03725300

HAL Id: hal-03725300

<https://hal.science/hal-03725300v1>

Submitted on 16 Jul 2022

HAL is a multi-disciplinary open access archive for the deposit and dissemination of scientific research documents, whether they are published or not. The documents may come from teaching and research institutions in France or abroad, or from public or private research centers.

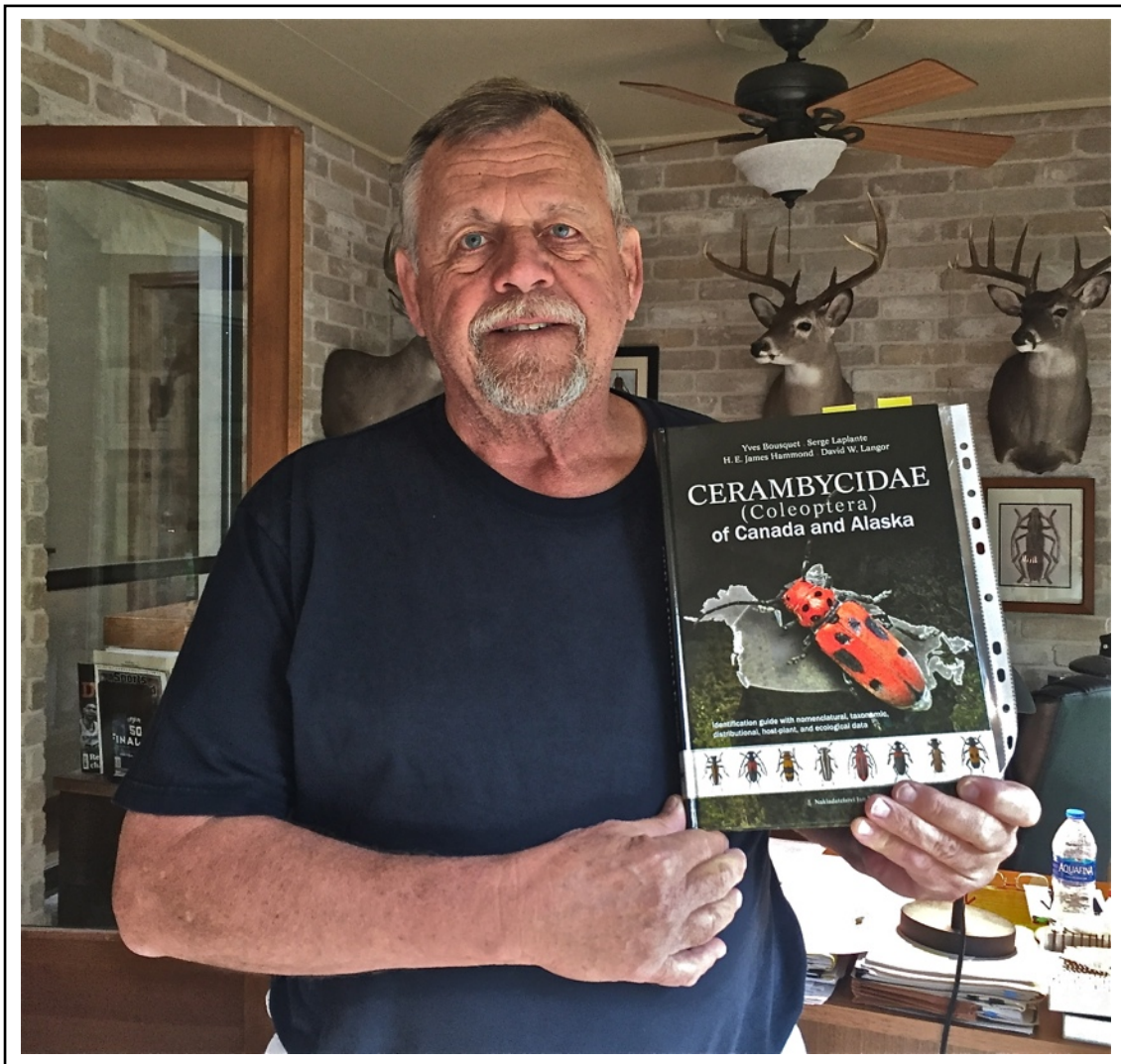
L'archive ouverte pluridisciplinaire **HAL**, est destinée au dépôt et à la diffusion de documents scientifiques de niveau recherche, publiés ou non, émanant des établissements d'enseignement et de recherche français ou étrangers, des laboratoires publics ou privés.



Distributed under a Creative Commons Attribution - NonCommercial - NoDerivatives 4.0 International License

Faunitaxys

*Revue de Faunistique, Taxonomie et Systématique
morphologique et moléculaire*



Volume 10
Numéro 40

Juillet 2022

ISSN : 2269 - 6016
Dépôt légal : Juillet 2022

Faunitaxys

*Revue de Faunistique, Taxonomie et Systématique
morphologique et moléculaire*

ZooBank : <http://zoobank.org/79A36B2E-F645-4F9A-AE2B-ED32CE6771CC>

Directeur de la publication, rédacteur, conception graphique et PAO:

Lionel Delaunay

Cette revue ne peut pas être vendue

Elle est distribuée par échange aux institutions (version papier)

et sur simple demande aux particuliers (format PDF)

à l'adresse suivante:

AFCFF (Association française de Cartographie de la Faune et de la Flore)

28, rue Voltaire, F- 42100 Saint Etienne

E-mail: lionel.delaunay@free.fr

Elle est disponible librement au téléchargement à partir du site:

<http://faunitaxys.fr/>

La parution de *Faunitaxys* est apériodique

Faunitaxys est indexé dans / *Faunitaxys* is indexed in:

- **Zoological Record**

Articles and nomenclatural novelties are referenced by:

- **ZooBank** (<http://zoobank.org>)

Online Archives:

- **HAL** (<https://hal.archives-ouvertes.fr>)

- **Internet Archive** (<https://archive.org>)

Imprimée sur les presses de SPEED COPIE, 6, rue Tréfilerie, F- 42100 Saint-Etienne

Imprimé le 18 juillet 2022

Description of two new species and one new genus of American Cerambycidae, and notes on *Amphicnaeia nigra* Galileo & Martins (Coleoptera)

ANTONIO SANTOS-SILVA

(3) Museu de Zoologia, Universidade de São Paulo, São Paulo, SP, Brazil.

- E-mail: toncriss@uol.com.br - Orcid: <https://orcid.org/0000-0001-7128-1418>

- ZooBank: <http://zoobank.org/726E502C-0712-4EB7-8737-63D881C96B39>

Keywords:

Coleoptera;
Cerambycidae;
taxonomy;
new species;
Coscinedes;
Enochlisi;
Latin America;
neotropical region.

Abstract. – *Coscinedes elpis* (Cerambycinae, Neocorini), **new species** is described from Guatemala. A key to species of *Coscinedes* Bates, 1885 is provided. *Enochlisi micri* (Lamiinae, Apomecynini), **gen. nov.** and **sp. nov.**, is described from Mexico. Additionally, notes on elytral color in *Amphicnaeia nigra* Galileo & Martins, 2001 are provided.

Santos-Silva A., 2022. – Description of two new species and one new genus of American Cerambycidae, and notes on *Amphicnaeia nigra* Galileo & Martins (Coleoptera). *Faunitaxys*, 10(40): 1 – 8.

DOI: [https://doi.org/10.57800/faunitaxys-10\(40\)](https://doi.org/10.57800/faunitaxys-10(40))

ZooBank: <http://zoobank.org/6B74EF49-435F-499C-8A09-E371E8BCA8F1>

Received: 16/05/2022 – Revised: 15/07/2022 – Accepted: 16/07/2022

Introduction

Coscinedes Bates, 1885 is a small genus of American Cerambycidae currently questionably placed (Santos-Silva & Skillman 2020) in Neocorini Martins, 2005, which includes only two known species.

Bates (1885) defined *Coscinedes* as follows (translated):

“Pertinent to the subfamily Piezocerinae, but the metatibiae not carinate and the body entirely densely reticulate-punctate. Body slender; glabrous. Head projected; frons transverse-quadrate, laterally with distinct margin; antennal tubercles wide, slightly elevated. Palpi very short, apical segment narrowly triangular. Antennae (male) filiform, slightly longer than the body, not pubescent; antennomere III shorter than the following antennomeres and scape, IV slightly longer than III, slightly shorter than the following antennomeres; III–IV sulcate, sulcus obtusely margined, V–X slightly serrate. Prothorax elongated, cylindrical, constricted basally, without lateral tubercles. Elytra narrowed apically, apex obtusely truncate, dorsally depressed, sides very sinuate centrally. Prosternal process narrow centrally, widely expanded apically, flat; procoxal cavities closed outwardly and posteriorly (coxae not protruding); mesoventrite wide, flat, mesocoxal cavities closed laterally; ventral segments normal. Femora abruptly clavate; metatibiae slightly flattened, not carinate; tarsi short and wide.”

As seen before, Bates (1885) included *Coscinedes* in Piezocerini Lacordaire, 1868, a status furthered by Aurivillius (1912). Martins & Chemsak (1966) transferred *Coscinedes* to Ibdionini (currently Neoibidionini Monné, 2012). Martins (1968) transferred the genus again, including it in Callidiopini Lacordaire, 1868. Finally, Martins (2005) included *Coscinedes*

in his new tribe Neocorini. For now, *Coscinedes* is retained in Neocorini, until detailed studies involving this tribe, Neoibidionini and Tillomorphini Lacordaire, 1868 are carried out. It is important to note that some of the generic features pointed out by Bates (1885), as for example the antennal length, are not present in *C. oaxacae* Martins & Galileo, 2006 or in the new species described here.

During the identification of specimens sent by the late James E. Wappes, I found a new species of Apomecynini, which could not be included in any known genus of the tribe; it is described in a new genus.

Furthermore, a few notes on *Amphicnaeia nigra* Galileo & Martins, 2001 are provided, as well as high-quality photographs that in addition to the original description, should help other researchers to identify the species.

Material and Methods

Photographs were taken in the MZSP with a Canon EOS Rebel T3i DSLR camera, Canon MP-E 65mm f/2.8 1-5X macro lens, controlled by Zerene Stacker AutoMontage software. Measurements were taken in “mm” using measuring ocular Hensoldt/Wetzlar - Mess 10 in the Leica MZ6 stereomicroscope, also used in the study of the specimens.

The acronyms used in the text are as follows:

- **FSCA**: Florida State Collection of Arthropods, Gainesville, Florida, USA
- **MCNZ**: Museu de Ciências Naturais, Fundação Zoobotânica do Rio Grande do Sul, Porto Alegre, Rio Grande do Sul, Brazil
- **MZSP**: Museu de Zoologia, Universidade de São Paulo, São Paulo, Brazil

Reviewers:

Larry G. Bezak (USA) - ZooBank: <http://zoobank.org/25C35904-2035-4416-9534-8641C1551196>

Juan Pablo Botero (Pontificia Universidad Javeriana, Bogotá, Colombia) - Orcid: <http://orcid.org/0000-0002-5547-7987>

- ZooBank: <http://zoobank.org/463CA17F-AC2C-44DF-85AB-2AEA79684A12>



This is an open access article under the terms of the Creative Commons Attribution-NonCommercial-NoDerivs License, which permits use and distribution in any medium, provided the original work is properly cited, the use is non-commercial and no modifications or adaptations are made.

Copyright 2022 The Authors. *Faunitaxys* published by Lionel Delaunay on behalf of the AFCFF (Association française de Cartographie de la Faune et de la Flore).

Taxonomy

NEOCORINI Martins, 2005

Coscinedes Bates, 1885

Coscinedes elpis sp. nov.

(Fig. 1-5)

ZooBank: <http://zoobank.org/53462783-0714-4607-A624-DB8574DB7700>

Holotype, ♂, GUATEMALA, *Zacapa*: Quarry rd. to San Lorenzo, Sierra Las Minas, 15°04'N, 89°67'W, 555 m, 26.V.2019, Wappes, Monzón & Skillman leg. (FSCA).

Description of the holotype.

Coloration. – Integument mostly shiny. Head, prothorax, mesoventrite, and mesanepisternum dark reddish; anteclypeus and labrum dark reddish-brown; prosternal process and mesoventral process dark reddish with some areas blackish; mandibles dark reddish except black apex; scape and pedicel dark reddish basally, gradually blackish toward apex; antennomeres III–VIII black, opaque; antennomeres IX–XI dark brown, opaque, with base of IX slightly dark reddish, and apex of XI reddish brown. Mesepimeron, metanepisternum, metaventrite, femora, tibiae black. Tarsi mostly dark brown, blackish on some areas, except reddish brown claws and metatarsomeres III–V. Abdominal ventrites black, except narrow reddish-brown apex of ventrites 1–4.

Head. – Frons coarsely, densely, deeply punctate, each puncture with short, bristly yellowish-white seta. Antennal tubercles coarsely punctate, except nearly smooth apex (punctures finer than on frons); each puncture with short yellowish-white seta; apical area with sparse row of minute whitish setae. Area between antennal tubercles laterally with punctures and setae as on frons, punctures anastomosed centrally. Vertex gradually elevated toward prothoracic margin; coarsely, deeply punctate (punctures coarser than on frons), each puncture with minute yellowish-white seta; with one long, erect yellow seta on each side behind antennal tubercles. Sides of head coarsely, deeply, abundantly punctate superiorly, each puncture with minute yellowish-white seta; area behind eyes superiorly subsmooth close to eye, coarsely punctate close to prothorax (some punctures with short yellowish-white seta), inferiorly tumid, moderately coarsely punctate close to eye (some punctures with short yellowish-white setae), with a few coarse punctures toward prothorax. Genae somewhat rugose-punctate, except smooth apex; with short, moderately sparse whitish setae, except glabrous apex. Wide central area of postclypeus slightly rugose-punctate; with a few minute yellowish-white setae, and one long, erect pale yellow seta on each side. Sides of postclypeus smooth, glabrous. Labrum coplanar with anteclypeus on posterior half, inclined on anterior half (central area concave); glabrous close to anteclypeus, with minute, sparse yellowish-white setae close to inclined area, with one long, erect pale yellow seta on each side of inclined area, and moderately dense brownish setae on concave area. Gulamentum smooth, glabrous on posterior third, coarsely, densely punctate on

anterior 2/3, each puncture with whitish seta, and one long, erect pale yellow seta on each side. Mandibles coarsely, densely punctate on basal 2/3 of outer side, smooth on apical third; each puncture with short whitish or yellow seta; with tuft of long, erect yellow setae close to smooth area. Posterior area of eyes slightly projected upward posteriorly; in frontal view, distance between eyes 0.55 times distance between outer margins of eyes. Antennae 1.5 times elytral length, reaching elytral apex at posterior third of antennomere XI. Scape convex dorsally, straight ventrally; moderately finely, abundantly punctate, punctures slightly sparser ventrally, except smooth dorsal apex; each puncture with a minute whitish seta. Pedicel and antennomeres III–XI densely minutely punctate, with fine punctures interspersed; with minute, decumbent whitish setae, gradually more abundant toward antennomere XI, and short, erect yellowish-white setae interspersed dorsally from antennomere VI; apical area of ventral surface of antennomeres V–X with short, abundant yellowish pubescence.

Antennal formula based on length of antennomere III:

– Scape = 1.11. – Pedicel = 0.39. – IV = 1.22. – V = 1.44. – VI = 1.55. – VII = 1.55. – VIII = 1.61. – IX = 1.67. – X = 1.50. – XI = 1.94.

Thorax. – Prothorax longitudinal; sides gradually widened from anterolateral angles to posterior third, narrowed toward posterior quarter, then parallel-sided to posterolateral angles; anterior margin convex and posterior margin concave. Pronotum very coarsely, deeply reticulate-punctate; each puncture with minute yellowish-white seta. Sides of prothorax with sculpturing and setae as on pronotum, except smooth, glabrous area close to posterior margin, and one long, erect yellowish-brown seta on each side of posterior fifth. Prosternum coarsely abundantly punctate, punctures coarser, longitudinal on sides of posterior half, transverse on remaining surface (punctures gradually finer toward anterior margin); each puncture with short whitish seta. Prosternal process nearly smooth, glabrous, strongly narrowed on anterior third, pentagonal on posterior 2/3, arched from apex of narrow area to posterior third, then flattened. Ventral surface of mesothorax coarsely, deeply, abundantly punctate, except mesepimeron somewhat rugose-punctate, and sides and apex of mesoventral process smooth; suture between mesoventrite and mesanepisternum absent; each puncture with short whitish seta; mesoventral process 0.55 times mesocoxal width. Metaventrite and metanepisternum coarsely, deeply, abundantly punctate, punctures gradually finer toward central area of metaventrite, especially toward posterior region; each puncture with short yellowish-white seta. Scutellum smooth, glabrous, subquadrate.

Elytra. – Coarsely, densely, almost reticulate-punctate, punctures finer toward apex; each puncture with short yellowish-white seta; apex rounded.

Legs. – Profemoral peduncle short; femoral club abruptly widened dorsally; minutely, sparsely punctate, punctures denser on posterior third of dorsal surface of club; with short, sparse white setae. Meso- and metafemora pedunculate-clavate; punctures and setae as on profemora. Tibiae with short, sparse white setae, except dense, bristly yellowish-brown setae on posterior 2/3 of ventral surface of protibiae, and posterior half of ventral surface of meso- and metatibiae; metatibiae with a few long, decumbent yellow setae. Metatarsomere I distinctly shorter than II–III together.

Key to species of *Coscinedes* Bates, 1885

- | | | |
|-------|---|--|
| 1. | Posterior area of lower eye lobes (Fig. 5) not narrowed and projected upward; antennae, elytra, and legs dark (Fig. 1); profemoral club abruptly widened (Fig. 2). Guatemala | <i>C. elpis</i> sp. nov. |
| — | Posterior area of lower eye lobes (Fig. 7 & 10) narrowed and projected upward; antennae, elytra, and legs orangish brown, reddish brown or bicolorous (Fig. 6, 10 & 11); profemoral club gradually widened (Fig. 8 & 11) | 2 |
| 2(1). | Prothorax mostly dark; elytra three times prothoracic length or slightly longer; antennae, elytra, and legs bicolorous (Fig. 9-11). Mexico (Oaxaca) | <i>C. oaxaca</i> Martins & Galileo, 2006 |
| — | Prothorax orangish brown or reddish brown; elytra shorter than three times prothoracic length; antennae, elytra, and legs unicolorous (sometimes femoral peduncle slightly darker than femoral club) (Fig. 6-8). Mexico (Oaxaca, Veracruz, Chiapas, Quintana Roo), Guatemala, Honduras, Nicaragua, Costa Rica, Panama | <i>O. gracilis</i> Bates, 1885 |



Figures 1-5. *Coscinedes elpis* sp. nov., ♂ holotype.

1. Dorsal habitus. 2. Ventral habitus. 3. Lateral habitus. 4. Head, frontal view. 5. Head and prothorax, lateral view.

Abdomen. – Ventrites coarsely, deeply, abundantly punctate, except smooth apex of 1–4, and subsmooth sides of 1–5; punctures on 1–4 with short whitish seta; punctures on basal 2/3 of ventrite 5 with short whitish seta, and punctures on posterior third with moderately long, pale yellow seta; apex of ventrite 5 rounded.

Dimensions (mm).

- Total length, 6.15;
- Prothoracic length, 1.35;
- Anterior prothoracic width, 0.95;
- Posterior prothoracic width, 0.90;
- Maximum prothoracic width, 1.15;
- Humeral width, 1.40;
- Elytral length, 4.10.

Etymology. – Greek, Elpis (ἐλπίς), personification and spirit of hope (feminine noun in apposition).

Remarks. – See key to separate *C. elpis* sp. nov. from the other species of the genus.

APOMECCYNINI Thomson, 1860

Enochlisi gen. nov.

ZooBank: <http://zoobank.org/71485AA5-A1DE-4003-8A60-D38D753A87C3>

Type species: *Enochlisi micri* sp. nov., here designated.

Etymology. – Greek, ἐνόχληση (annoyance, bother, trouble); alluding to the problems and annoyances encountered while completing this work. Feminine gender.

Description. – Small size. Body convex, subelongate, without long and erect setae. Head retractile. Frons subflattened. Antennal tubercles slightly elevated, distinctly separated from each other. Eyes divided, with irregular, imperfectly formed row of ommatidia close to upper and lower eye lobes. Antennae not reaching elytral apex in both sexes; scape slightly shorter than antennomere III, subpiriform, without apical cicatrix; antennomere III longer than IV; antennomere IV longer than V. Prothorax with small, subtriangular tubercle laterally about middle. Apex of prosternal process widely expanded apically, emarginate centrally. Mesocoxal cavities closed laterally. Metathorax distinctly shorter than abdominal ventrite 1. Humeri without spiniform projection; elytra without centrobasal crest, fused along suture, with rounded apex. Femora pedunculate-clavate. Abdominal ventrite 5 distinctly longer than ventrite 4 in both sexes; intercoxal process wide, with rounded apex.

Remarks. – *Enochlisi* gen. nov. is similar to *Potiatuca* Galileo & Martins, 2006, by the reduced metathorax, and the abdominal intercoxal process very wide and rounded apically, a feature omitted in the original description of *Potiatuca* (Fig. 19), but differs as follows: eye lobes divided (not divided in *Potiatuca*); body without long and erect setae (present and somewhat abundant in *Potiatuca*). *Enochlisi* differs from *Adaptaptera* Santos-Silva, Nascimento & Wappes, 2019 especially by the abdominal intercoxal process being wide and with rounded apex (narrow and triangular-shaped in *Adaptaptera*). As the shape of the intercoxal process was not mentioned in the original description of *Potiatuca carioca* Monné & Monné, 2009, and *P. serrana* Monné & Monné, 2009, it is not possible to know if they really belong to *Potiatuca*. Even so, these two species differ from the type species of *Enochlisi* by the presence of somewhat abundant erect setae and eyes being not divided.

Enochlisi micri sp. nov.

(Fig. 12-18)

ZooBank: <http://zoobank.org/B3146B9C-9544-42D2-8542-3C2CB62739F0>

Holotype, ♂, MEXICO, *Oaxaca*: Hwy 175, 76 km NE Oaxaca, 9,400', 29.VIII.1982, C. & L. O'Brien & G. Wibmer leg. (FSCA).

Paratypes – Same data as holotype, 4 ♀ (3 FSCA; 1 MZSP, formerly FSCA).

Description of the holotype (Fig. 12-16).

Coloration. – Integument mostly dark brown; ventral mouthparts dark reddish brown, except orangish-brown apex of palpomeres; anterior area of labrum reddish brown; apex of scape dark reddish brown; pedicel and antennomeres dark reddish brown, lighter from V. Apex of lobes of tarsomere III, and entire tarsomeres IV and V reddish brown; tarsal claws reddish brown basally, blackish on remaining surface.

Head. – Frons coarsely, somewhat sparsely punctate; with brownish pubescence not obscuring integument, a few short yellowish-white suberect setae interspersed, especially superiorly, and a few long, erect, both yellowish-white and reddish-brown setae interspersed laterally. Vertex with sculpturing as on frons; depressed between antennal tubercles and upper eye lobes; with brownish pubescence not obscuring integument, sparser close to prothorax, and one long, erect yellowish-brown seta on each side close to upper eye lobes. Area behind eyes and genae coarsely, somewhat sparsely punctate, except smooth area of genae under lower eye lobe; with brownish pubescence not obscuring integument, and yellowish-white pubescence interspersed, more abundant near apex of genae. Antennal tubercles coarsely, sparsely punctate basally, smooth apically; with brownish pubescence not obscuring integument. Wide central area of postclypeus finely, abundantly punctate; with brownish pubescence not obscuring integument, and moderately long yellowish-white setae interspersed. Sides of postclypeus smooth, glabrous. Labrum finely, sparsely punctate on posterior 3/4, smooth on anterior quarter; with both, short and somewhat long yellowish-white setae directed forward on posterior 3/4, glabrous on anterior quarter; anterior margin with dense fringe of golden setae. Gulamentum minutely, abundantly punctate; with yellowish-white pubescence not obscuring integument, and a few long, erect yellowish-white setae on intermaxillary process. Outer side of mandibles finely punctate, with yellowish pubescence not obscuring integument on basal half, smooth, glabrous on apical half. Distance between upper eye lobes 0.38 times distance between outer margins of eyes; in frontal view, distance between lower eye lobes 0.74 times distance between outer margins of eyes. Antennae 1.25 times elytral length, slightly surpassing base of posterior third of elytra. Scape finely, abundantly punctate, with yellowish-brown pubescence not obscuring integument, and short, decumbent pale yellow setae interspersed dorsally and laterally. Pedicel and antennomeres III–IV with brownish pubescence not obscuring integument, with short, decumbent pale yellow setae interspersed throughout, and long, erect dark brown setae on posterior half of inner margin. Antennomeres V–XI with yellowish-white pubescence, gradually denser toward XI; antennomeres V–VII with long brownish setae on apex of inner margin.

Antennal formula based on length of antennomere III:

– Scape = 0.94. – Pedicel = 0.32. – IV = 0.65. – V = 0.59. – VI = 0.53. – VII = 0.53. – VIII = 0.47. – IX = 0.47. – X = 0.47. – XI = 0.59.

Thorax. – Prothorax slightly wider than long. Pronotum coarsely, abundantly punctate; with brownish pubescence not obscuring integument, except narrow, slightly distinct longitudinal yellowish-white pubescent band centrally (this pubescence more distinct close to posterior margin), and a few long, erect yellowish-white setae interspersed laterally. Sides of prothorax with sculpturing as on pronotum; with brownish pubescence not obscuring integument. Prosternum coarsely, somewhat abundantly punctate, except smooth, oblique central band laterally; with brownish pubescence not obscuring integument, more yellowish-white centrally, and a few long, erect yellowish setae interspersed. Prosternal process with somewhat abundant yellowish-white pubescence not obscuring integument, sparser on sides of posterior region, and long, erect setae of same color



Figures 6-11. *Coscinedes* spp.

6-8. *C. gracilis* Bates, 1885, ♂ from Mexico (Yucatán). **6.** Dorsal habitus. **7.** Head and prothorax, lateral view. **8.** Ventral habitus.
9-11. *C. oaxaca* Martins & Galileo, 2006, paratype ♂ from Mexico (Oaxaca). **9.** Dorsal habitus. **10.** Head and prothorax, lateral view.
11. Ventral habitus.

interspersed; narrowest area 0.34 times procoxal width. Mesoventrite narrow, coarsely, sparsely punctate, except smooth sides; with sparse brownish pubescence centrally, distinctly denser laterally. Mesanepisternum and mesepimeron coarsely, somewhat abundantly punctate, punctures finer on mesepimeron; with abundant brownish pubescence not obscuring integument. Mesoventral process abruptly elevated basally, coarsely, sparsely punctate; with yellowish-white pubescence not obscuring integument; apex emarginate centrally, 0.41 times mesocoxal width. Metanepisternum and anterior half of metaventrite coarsely, sparsely punctate, punctures coarser on metaventrite; posterior half of metaventrite distinctly more elevated than anterior half, and more elevated than abdominal intercoxal process; with brownish pubescence not obscuring integument, and long, erect setae of same color interspersed on posterior region of metaventrite. Scutellum triangular-shaped; with dense pale yellow pubescence.

Elytra. – Coarsely vermiculate dorsally; coarsely, somewhat abundantly punctate, punctures slightly finer toward apex; with abundant brownish pubescence not obscuring integument, and irregular yellowish-white pubescent maculae interspersed.

Legs. – Femora with abundant brownish pubescence not obscuring integument, more yellowish-white on base of profemora, and a few short, bristly yellowish-white setae interspersed ventrally on meso- and metafemora. Tibiae with brownish pubescence not obscuring integument, except bristly yellowish-brown pubescence on posterior half of ventral surface of protibia, fringe of yellow setae on apex of all tibiae, dense, long, erect, abundant yellow setae on dorsal sulcus of mesotibiae, and bristly pale yellow setae on posterior quarter of ventral surface of meso- and metatibiae. Metatarsomere I shorter than II–III together.

Abdomen. – Ventrite 1 coarsely, sparsely punctate laterally, punctures slightly more abundant on sides of intercoxal process, minutely, abundantly punctate on remaining surface, except smooth apex; ventrites 2–3 with a few coarse punctures laterally, more abundant on 3, minutely, abundantly punctate on remaining surface, except smooth apex; ventrite 4 minutely, abundantly punctate, except smooth apex; ventrite 5 minutely, abundantly punctate, with fine punctures interspersed. Ventrites with abundant brownish pubescence not obscuring integument, and long, erect yellowish-white setae interspersed, distinctly more abundant on 5, except glabrous apex of 1–4. Ventrite 5 twice length of 4; apex truncate.

Female (Fig. 17–18). It differs from ♂ by:

- Shorter antennae, as long as elytral length, reaching about middle of elytra;
- Narrowest area of prosternal process wider, about 0.5 times procoxal width;
- Apex of mesoventral process wider, 0.57 times mesocoxal width;
- Abdominal ventrite 5 2.5 times length of 4, with apex slightly rounded.

Dimensions (mm) (holotype ♂ / paratypes ♀).

- Total length, 5.90/5.80–7.60;
- Prothoracic length, 1.65/1.30–1.85;
- Anterior prothoracic width, 1.50/1.40–1.85;
- Posterior prothoracic width, 1.70/1.50–2.10;
- Maximum prothoracic width, 1.85/1.70–2.30;
- Humeral width, 2.00/1.95–2.60;
- Elytral length, 3.90/3.70–4.95.

Etymology. – Greek, μικρή (mikrī), adjective meaning short (in length), allusive to the size of the metathorax.

Amphicnaeia Bates, 1866

Amphicnaeia nigra Galileo & Martins, 2001

(Fig. 20–21)

Amphicnaeia nigra Galileo & Martins, 2001: 39;

Monné, 2005: 288 (cat.);

Monné & Hovore, 2006: 225 (checklist);

Moura & Von Groll, 2017: 448 (holotype);

Monné, 2022: 491.

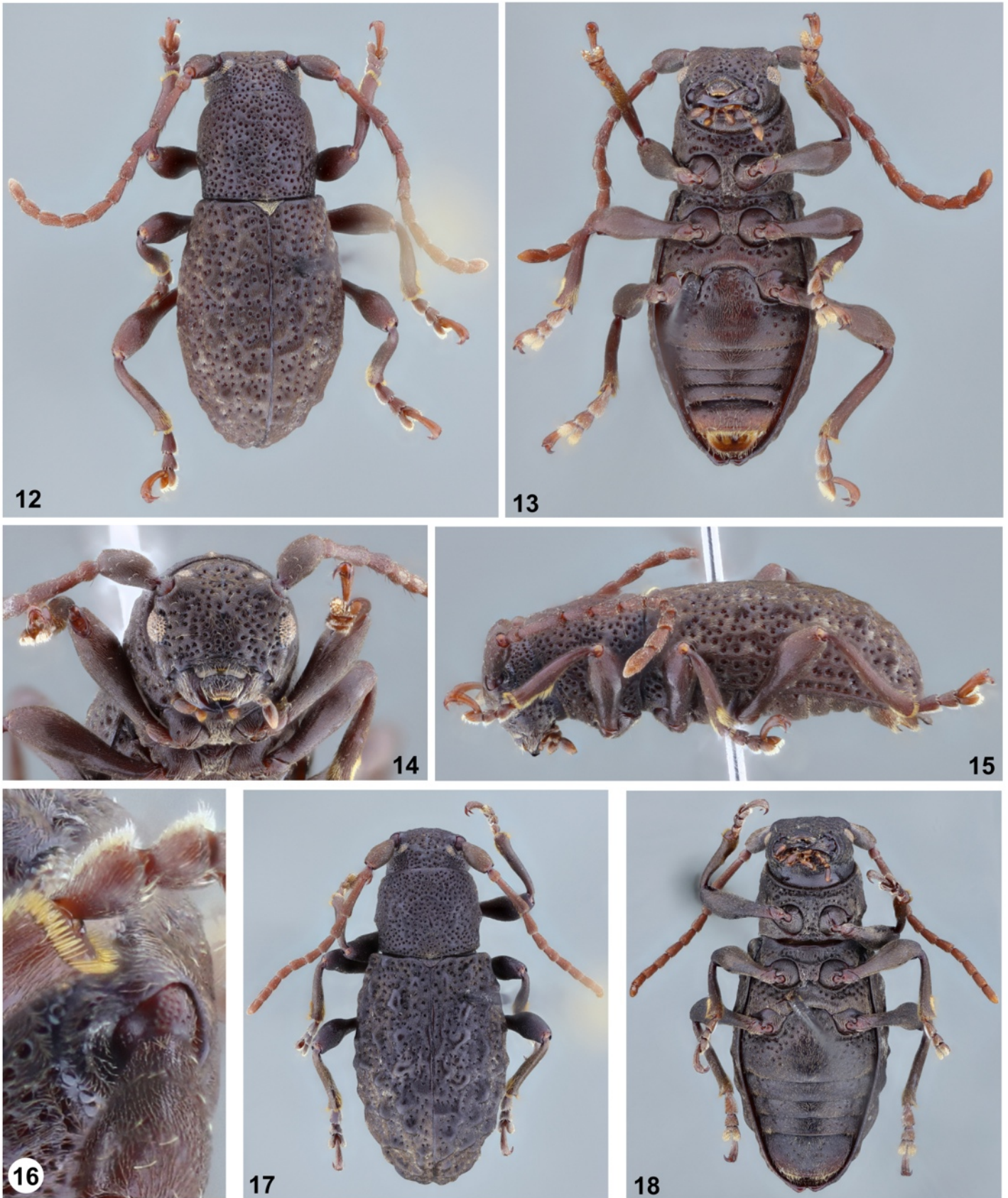
Remarks. – This species was described based on a single female from Brazil (Rio Grande do Sul). It remains known only by the holotype (Monné 2022; Tavakilian & Chevillotte 2021). According to Galileo & Martins (2001), the elytra in *A. nigra* are uniformly black, without contrasting pubescent maculae. However, it is possible to see that the elytra have a faint pale yellow pubescent band on the base.

Acknowledgments

Thanks to Paul Skelley (FSCA) for sending specimens for study, and to Luciano Moura (MCNZ) for the photographs of *Amphicnaeia nigra* and *Potiaticna ingridae* Galileo & Martins, 2006. Thanks also to Juan Pablo Botero (Bogotá, Colombia) and Larry G. Bezark (California, USA) for accurate review of the manuscript.

References

- Aurivillius C., 1912. – Cerambycidae: Cerambycinae. In: Junk, W. and Schenkling, S. (Eds), *Coleopterorum Catalogus*. Pars 39. W. Junk, Berlin, 574 pp.
- Bates H.W., 1885. – *Biologia Centrali-Americana*, Insecta, Coleoptera, suppl. to Longicornia, 5: 249–436.
- Galileo M.H.M. & Martins U.R., 2001. – Notas sobre *Amphicnaeia* Bates, 1866 (Coleoptera, Cerambycidae, Lamiinae) com revalidações e descrições de espécies novas. *Revista Brasileira de Entomologia*, 45(1): 37–41.
- Martins U.R., 1968. – Notas sobre Cerambycinae II (Coleoptera, Cerambycidae). *Papéis Avulsos de Zoologia*, 22(3): 13–30.
- Martins U.R., 2005. – Tribo Neocorini, pp. 239–270. In: Martins UR (Org.), *Cerambycidae Sul-americanos* (Coleoptera), Taxonomia. Volume 5. Editora da Universidade de São Paulo (Edusp), São Paulo, v + 284 pp.
- Martins U.R. & Chemsak J.A., 1966. – Synopsis of the known Mexican Ibidionini. (Coleoptera, Cerambycidae). *Journal of the Kansas Entomological Society*, 39(3): 454–467.
- Monné M.A., 2005. – Catalogue of the Cerambycidae (Coleoptera) of the Neotropical Region. Part II. Subfamily Lamiinae. *Zootaxa*, 1023: 1–759.
- Monné M.A., 2022. – Catalogue of the Cerambycidae (Coleoptera) of the Neotropical region. Part II. Subfamily Lamiinae. Available from: <https://cerambycids.com/catalog/> (Last accessed 25 April 2022).
- Monné M.A. & Hovore F.T., 2006. – *A Checklist of the Cerambycidae, or longhorned wood-boring beetles, of the Western Hemisphere*. Rancho Dominguez, Bio Quip Publications, 393 pp.
- Moura L.A. & Von Groll E., 2017. – Catalogue of Coleoptera type specimens housed in the collection of the Museu de Ciências Naturais, Fundação Zoobotânica do Rio Grande do Sul, Brazil. *Zootaxa*, 4318(3): 439–473.
- Santos-Silva A. & Skillman F.W., 2020. Description of a new species of *Xalitla* Lane, 1959 (Cerambycidae: Cerambycinae: Neobidionini) from western Mexico. *Insecta Mundi*, 765: 1–9.
- Tavakilian G.L. & Chevillotte H., 2021. – Titan: base de données internationales sur les Cerambycidae ou Longicornes. Available on <http://titan.gbif.fr/> (Last accessed 25 April 2022).



Figures 12-18. *Enochlisi micri* sp. nov.

12-16. Holotype ♂. 12. Dorsal habitus. 13. Ventral habitus. 14. Head, frontal view. 15. Lateral habitus. 16. Eye.
17-18. Paratype ♀. 17. Dorsal habitus. 18. Ventral habitus.



Figures 19-21.

19. *Potiatuca ingridae* Galileo & Martins, 2006, ventral view.

20-21. *Amphicnaeia nigra* Galileo & Martins, 2001, holotype ♀. 20. Dorsal habitus. 21. Ventral habitus. All by Luciano Moura.

Résumé

Santos-Silva A., 2022. – Description de deux nouvelles espèces et d'un nouveau genre de Cerambycidae américains, avec une note sur *Amphicnaeia nigra* Galileo & Martins (Coleoptera). *Faunitaxys*, 10(40): 1 – 8.

Coscinedes elpis (Cerambycinae, Neocorini), **n. sp.** est décrite du Guatemala. Une clé du genre *Coscinedes* Bates, 1885 est proposée. *Enochlisi micri* (Lamiinae, Apomecynini), **n. gen.** et **n. sp.**, est décrite de Mexico. De plus, des informations sur la couleur des élytres chez *Amphicnaeia nigra* Galileo & Martins, 2001 sont données.

Mots-clés. – Coleoptera, Cerambycidae, taxonomie, nouvelles espèces, *Coscinedes*, *Enochlisi*, Amérique latine, région néotropicale.

Derniers articles publiés

Montreuil O. & Uliana M., 2022. – Un nouvel *Amphimallon* Latreille (Coleoptera, Melolonthidae, Rhizotrogini) de l'île de Sifnos (Grèce). *Faunitaxys*, 10(12) : 1 – 5. [https://doi.org/10.57800/faunitaxys-10\(12\)](https://doi.org/10.57800/faunitaxys-10(12))

Háva J., 2022. – *Anthrenus* (*Anthrenus*) *coacheorum* **sp. nov.** from Senegal (Coleoptera: Dermestidae: Megatominae). *Faunitaxys*, 10(13) : 1 – 3. [https://doi.org/10.57800/faunitaxys-10\(13\)](https://doi.org/10.57800/faunitaxys-10(13))

Keith D., 2022. – Description d'une nouvelle espèce du genre *Brachyllus* Brenske, 1896 (Coleoptera, Scarabaeidae, Melolonthinae) de Chine méridionale. *Faunitaxys*, 10(14) : 1 – 3. [https://doi.org/10.57800/faunitaxys-10\(14\)](https://doi.org/10.57800/faunitaxys-10(14))

Háva J., 2022. – A new Dermestidae species (Coleoptera: Bostrichoidea) from central Iran. *Faunitaxys*, 10(15) : 1 – 3. [https://doi.org/10.57800/faunitaxys-10\(15\)](https://doi.org/10.57800/faunitaxys-10(15))

Coache A. & Borovec R., 2022. – On the genus *Dicasticus* Pascoe, 1886 in archipel of São Tomé and Príncipe (Curculionidae, Entiminae, Peritelini). *Faunitaxys*, 10(16): 1 – 16. [https://doi.org/10.57800/faunitaxys-10\(16\)](https://doi.org/10.57800/faunitaxys-10(16))

Ballerio A. & Coache A., 2022. – A new species of *Chaetophilharmostes* from São Tomé (Guinea Gulf) with remarks on the generic status of the genus *Chaetophilharmostes* (Coleoptera, Scarabaeoidea, Hybosoridae, Ceratocanthinae). *Faunitaxys*, 10(17): 1 – 8. [https://doi.org/10.57800/faunitaxys-10\(17\)](https://doi.org/10.57800/faunitaxys-10(17))

Botero J. P. & Santos-Silva A., 2022. – A new species of *Elytrimitatrix* (*Grossifemora*) Santos-Silva & Hovore (Coleoptera, Disteniidae, Disteniinae). *Faunitaxys*, 10(18): 1 – 4. [https://doi.org/10.57800/faunitaxys-10\(18\)](https://doi.org/10.57800/faunitaxys-10(18))

Bezark L. G., Botero J. P. & Santos-Silva A., 2022. – New species, transferences and taxonomic notes on American Lamiinae (Coleoptera, Cerambycidae). *Faunitaxys*, 10(19): 1 – 25. [https://doi.org/10.57800/faunitaxys-10\(19\)](https://doi.org/10.57800/faunitaxys-10(19))

- López M. A. & Baena M., 2022. – *Anisogaster mohelianus* (Quentin & Villiers, 1979) **comb. nov.**, primer registro para Madagascar (Coleoptera: Cerambycidae: Obriini). *Faunitaxys*, 10(20): 1 – 7. [https://doi.org/10.57800/faunitaxys-10\(20\)](https://doi.org/10.57800/faunitaxys-10(20))
- Lacroix M., Coache A. & Filippi G., 2022. – Contribution à la connaissance des Sericinae de Sao Tomé et Principe (Coleoptera, Scarabaeoidea). *Faunitaxys*, 10(21) : 1 – 9. [https://doi.org/10.57800/faunitaxys-10\(21\)](https://doi.org/10.57800/faunitaxys-10(21))
- Háva J. & Zahradník P., 2022. – A new *Adelina* Dejean, 1835 species from Mexico (Coleoptera: Tenebrionidae: Diaperini). *Faunitaxys*, 10(22) : 1 – 5. [https://doi.org/10.57800/faunitaxys-10\(22\)](https://doi.org/10.57800/faunitaxys-10(22))
- Delahaye N. & Kozlov A. O., 2022. – Etude du genre *Enneaphyllus* Waterhouse, 1877 (Coleoptera, Cerambycidae, Prioninae, Meroscelisini). *Faunitaxys*, 10(23) : 1 – 5. [https://doi.org/10.57800/faunitaxys-10\(23\)](https://doi.org/10.57800/faunitaxys-10(23))
- Magnani F., Stockar R. & Lourenço W. R., 2022. – A new family, genus and species of fossil scorpion from the Meride Limestone (Middle Triassic) of Monte San Giorgio (Switzerland). *Faunitaxys*, 10(24): 1 – 7. [https://doi.org/10.57800/faunitaxys-10\(24\)](https://doi.org/10.57800/faunitaxys-10(24))
- Háva J., 2022. – A new *Attagenus* species (Coleoptera: Dermestidae: Attageninae) from Ivory Coast. *Faunitaxys*, 10(25): 1 – 3. [https://doi.org/10.57800/faunitaxys-10\(25\)](https://doi.org/10.57800/faunitaxys-10(25))
- Ythier E. & Lourenço W. R., 2022. – A new species of *Lychas* C. L. Koch, 1845 from Thailand (Scorpiones: Buthidae). *Faunitaxys*, 10(26): 1 – 7. [https://doi.org/10.57800/faunitaxys-10\(26\)](https://doi.org/10.57800/faunitaxys-10(26))
- Lourenço W. R. & Ythier E., 2022. – A new species of the genus *Scorpiops* Peters, 1861, subgenus *Euscorpiops* Vachon, 1980 from Laos (Scorpiones: Scorpioipidae). *Faunitaxys*, 10(27): 1 – 9. [https://doi.org/10.57800/faunitaxys-10\(27\)](https://doi.org/10.57800/faunitaxys-10(27))
- Ythier E., 2022. – A new species of *Buthacus* Birula, 1908 from Western Algeria (Scorpiones: Buthidae). *Faunitaxys*, 10(28): 1 – 6. [https://doi.org/10.57800/faunitaxys-10\(28\)](https://doi.org/10.57800/faunitaxys-10(28))
- Moretto P. & Minetti R., 2022. – Le véritable *Heliocopris bucephalus* (Fabricius, 1775). Description d'une nouvelle espèce et établissement d'une nouvelle synonymie (Coleoptera, Scarabaeidae, Coprini). *Faunitaxys*, 10(29) : 1 – 12. [https://doi.org/10.57800/faunitaxys-10\(29\)](https://doi.org/10.57800/faunitaxys-10(29))
- Vives E., 2022. – Cerambycidos nuevos o interesantes de Filipinas (Coleoptera, Cerambycidae) (Pars-22). *Faunitaxys*, 10(30) : 1 – 3. [https://doi.org/10.57800/faunitaxys-10\(30\)](https://doi.org/10.57800/faunitaxys-10(30))
- Huchet J-B. & Labatut S., 2022. – *Ataenius heinekeni* (Wollaston, 1854) découvert en France. Première citation pour la région paléarctique continentale (Coleoptera : Scarabaeoidea : Aphodiidae : Eupariinae). *Faunitaxys*, 10(31) : 1 – 7. [https://doi.org/10.57800/faunitaxys-10\(31\)](https://doi.org/10.57800/faunitaxys-10(31))
- Háva J., 2022. – A contribution to knowledge of the Dermestidae (Coleoptera) fauna of Kyrgyzstan. *Faunitaxys*, 10(32): 1 – 3. [https://doi.org/10.57800/faunitaxys-10\(32\)](https://doi.org/10.57800/faunitaxys-10(32))
- Ahrens D., 2022. – *Tetraserica takakuwai* **sp. nov.** – a further new species of *Tetraserica* Ahrens, 2004 from Thailand (Coleoptera: Scarabaeidae: Melolonthinae: Sericini). *Faunitaxys*, 10(33) : 1 – 4. [https://doi.org/10.57800/faunitaxys-10\(33\)](https://doi.org/10.57800/faunitaxys-10(33))
- Borer M. & Ehrmann R., 2022. – Contribution to the knowledge of the genus *Parasphendale* Schulthess-Schindler, 1898 (Mantodea: Miomantidae) with description of a new species from East Africa. *Faunitaxys*, 10(34): 1 – 29. [https://doi.org/10.57800/faunitaxys-10\(34\)](https://doi.org/10.57800/faunitaxys-10(34))
- Lourenço W. R. & Velten J., 2022. – Further insights on Cretaceous Burmite scorpions with the descriptions of a new genus and species (Scorpiones: Buthoidea: Buthidae). *Faunitaxys*, 10(35): 1 – 5. [https://doi.org/10.57800/faunitaxys-10\(35\)](https://doi.org/10.57800/faunitaxys-10(35))
- Lanuza-Garay A., 2022. – A New Species of *Confluentia* Santos-Silva, Galileo & McClarin (Cerambycidae: Lamiinae: Colobotheini) from Panamá. *Faunitaxys*, 10(36): 1 – 3. [https://doi.org/10.57800/faunitaxys-10\(36\)](https://doi.org/10.57800/faunitaxys-10(36))
- Lapèze J., 2022. – Le genre *Centronodus* Funkhouser (Hemiptera : Membracidae : Centronodinae) en Guyane française et description d'une nouvelle espèce. *Faunitaxys*, 10(37) : 1 – 19. [https://doi.org/10.57800/faunitaxys-10\(37\)](https://doi.org/10.57800/faunitaxys-10(37))
- Qiu L., 2021. – A new species of *Oospira* Blanford, 1872 (Gastropoda: Stylommatophora: Clausiliidae) from Chongqing, China. *Faunitaxys*, 10(38) : 1 – 5. [https://doi.org/10.57800/faunitaxys-10\(38\)](https://doi.org/10.57800/faunitaxys-10(38))

Faunitaxys est échangée avec les revues suivantes (« print versions ») :

- Annali del Museo Civico di Storia Naturale G. Doria (Italie)
- Boletín de la Asociación española de Entomología (Espagne)
- Boletín de la Sociedad Andaluza de Entomología (Espagne)
- Bollettino del Museo di Storia Naturale di Venezia (Italie)
- Bulletin de la Société linnéenne de Lyon (France)
- Bulletin of Insectology (Italie)
- Heteropterus Rev. Entomol. (Espagne)
- Israel Journal of Entomology (Israël)
- Klapalekiana (République Tchèque)
- Koleopterologische Rundschau (Allemagne)
- Memorie del Museo Civico di Storia Naturale di Verona (Italie)
- Nova Supplementa Entomologica (Allemagne)
- Proceedings of the Entomological Society of Washington (USA)
- Revue suisse de Zoologie (Suisse)
- Spixiana (Allemagne)
- Stuttgarter Beiträge zur Naturkunde A, Biologie (Allemagne)
- Zoosystematica Rossica (Russie)

Faunitaxys

Volume 10, Numéro 40, Juillet 2022

SOMMAIRE

Description de deux nouvelles espèces et d'un nouveau genre de Cerambycidae américains, avec une note sur *Amphicnaeia nigra* Galileo & Martins (Coleoptera).

Antonio Santos-Silva 1 – 8

CONTENTS

Description of two new species and one new genus of American Cerambycidae, and notes on *Amphicnaeia nigra* Galileo & Martins (Coleoptera).

Antonio Santos-Silva 1 – 8



Illustration de la couverture :

The late James E. Wappes at his home a few years before his passing. The photo was taken by his wife, Rebecca Wappes.

Crédits photos:

© **Antonio Santos-Silva** : Fig. 1-21.