



HAL
open science

Land cover mapping with Gaussian Processes at the country scale using sparse and variational approaches

Valentine Bellet, Mathieu M. Fauvel, Jordi Inglada

► **To cite this version:**

Valentine Bellet, Mathieu M. Fauvel, Jordi Inglada. Land cover mapping with Gaussian Processes at the country scale using sparse and variational approaches. Living Planet Symposium 2022, May 2022, Bonn, Germany. hal-03720074

HAL Id: hal-03720074

<https://hal.science/hal-03720074>

Submitted on 11 Jul 2022

HAL is a multi-disciplinary open access archive for the deposit and dissemination of scientific research documents, whether they are published or not. The documents may come from teaching and research institutions in France or abroad, or from public or private research centers.

L'archive ouverte pluridisciplinaire **HAL**, est destinée au dépôt et à la diffusion de documents scientifiques de niveau recherche, publiés ou non, émanant des établissements d'enseignement et de recherche français ou étrangers, des laboratoires publics ou privés.

LAND COVER MAPPING WITH GAUSSIAN PROCESSES AT THE COUNTRY SCALE USING SPARSE AND

VARIATIONAL APPROACHES

V. BELLET^{1,2}, M. FAUVEL², J. INGLADA²

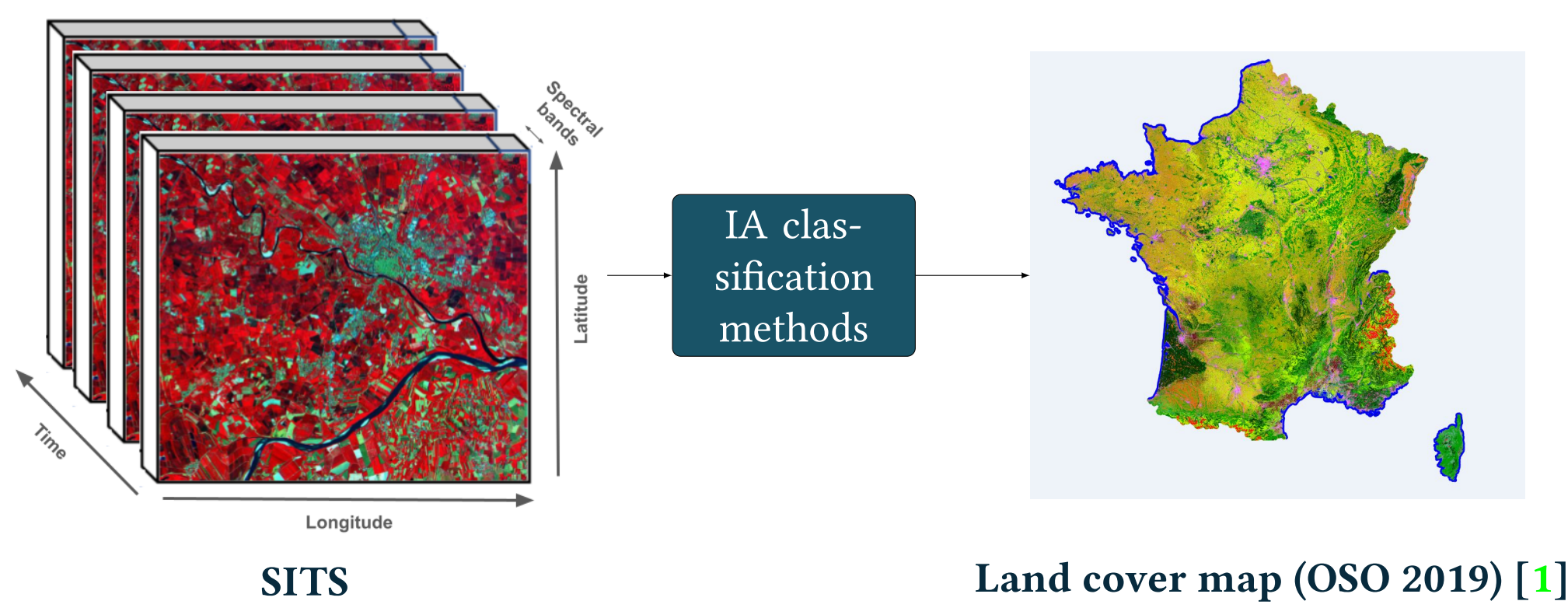
¹ Université Fédérale Toulouse Midi-Pyrénées

² CESBIO, Université de Toulouse, CNES/CNRS/INRAe/IRD/UPS

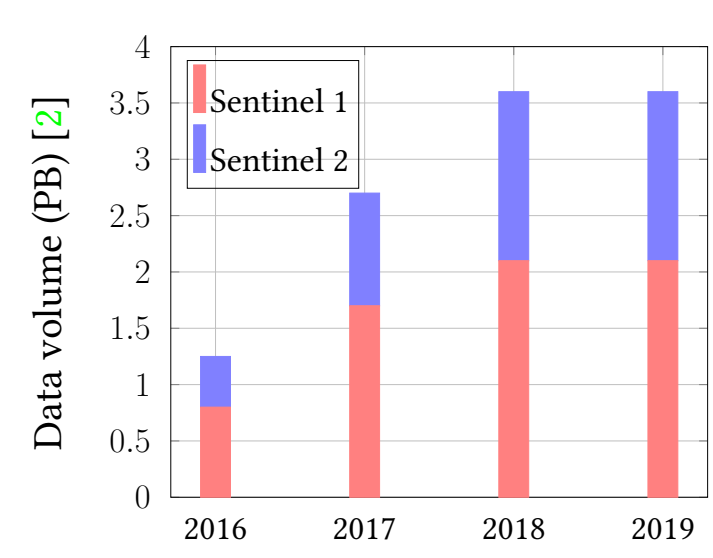


Massive Earth Observation Data

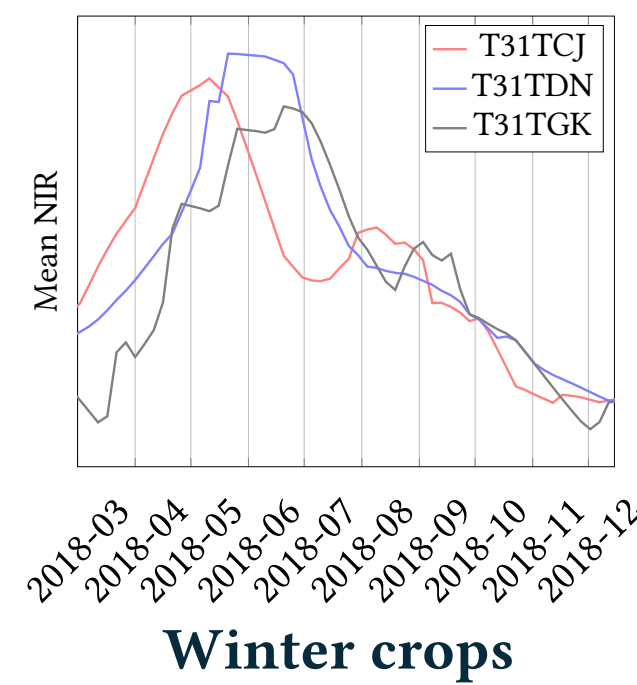
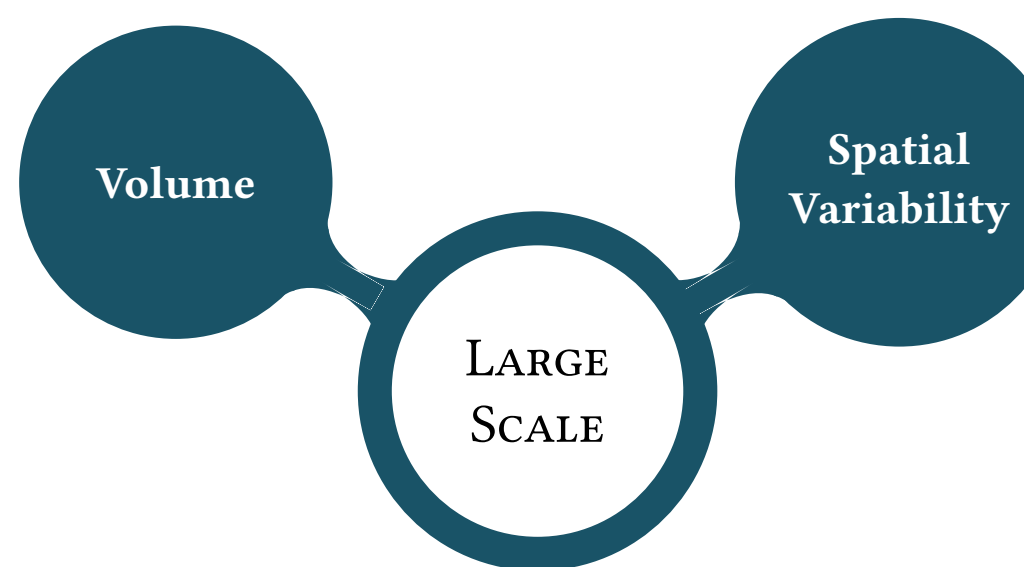
Land cover classification:



Challenges:



Annual data volume



Winter crops

Data generation:

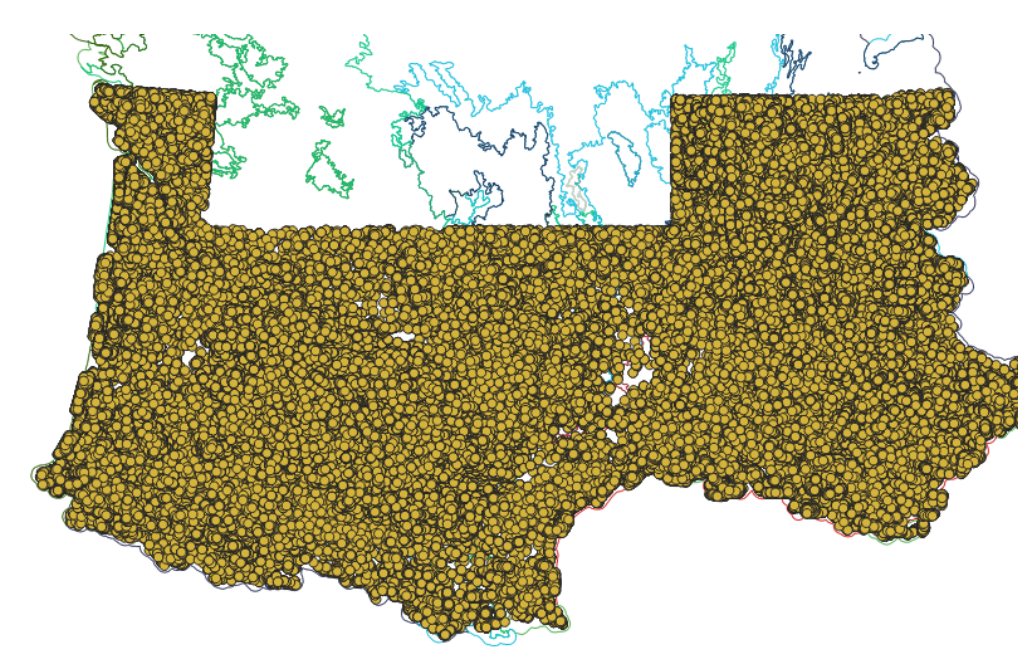
Classification dataset

- 3 distinct datasets: train, validation and test
- dataset produced for each ecoclimatic region (8 ecoclimatic regions)
- sampling repeated 11 times with different random seed
- preprocessing: feature scaling

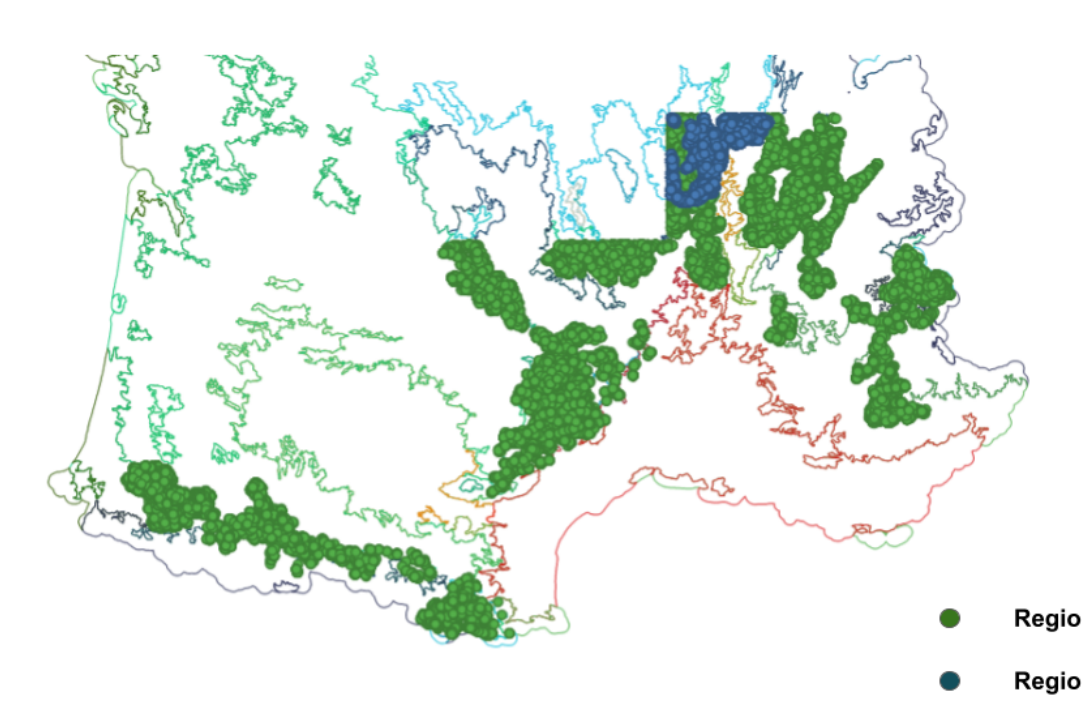
Maximum number of pixels for each class

	Region X	Global
Dataset A (train-val)	4 000-1 000	32 000 -8 000
Dataset B (train-val)	16 000-4 000	128 000-32 000
Dataset A&B (test)	10 000	80 000

Classification configuration:



Global configuration:
learn a unique model in the full area



Stratification configuration:
learn a model for each ecoclimatic region

Competitive methods:

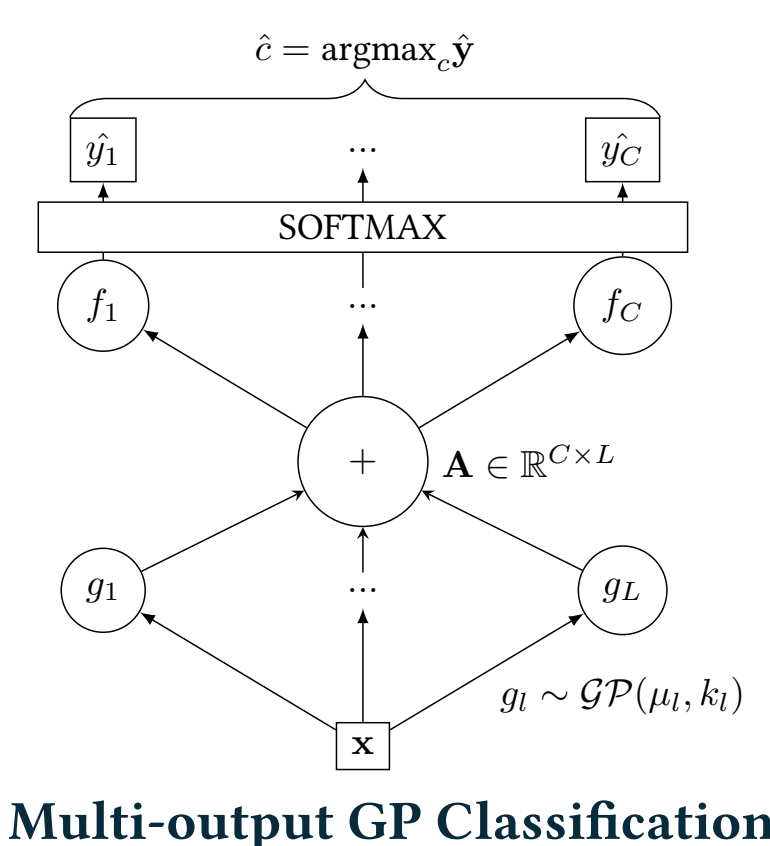
1. Random Forest (RF): 100 trees with no maximum depth and the number of features considered for splitting at each leaf node is equal to the square root of the total number of features. (*Scikit-learn*)
2. Multilayer Perceptron (MLP): four hidden layers. The number of neurons in the first layer is the number of features divided by 2 and in the last three layers: the number of classes multiplied by 3. The activation function used is the ReLU. (*Pytorch*)

Large Scale Gaussian Process Classification

Multi-output Stochastic Variational Sparse Gaussian Process Classification [3]:

To overcome large scale issues [4], Gaussian Process $f \sim \mathcal{GP}(\mu, k)$ can be approximated using inducing points $\mathbf{Z} = \{\mathbf{z}_i\}_{i=1}^m$ with $m \ll n$ (i.e. n number of training inputs $\mathbf{X} = \{\mathbf{x}_i\}_{i=1}^n$). The complexity is reduced from $\mathcal{O}(n^3)$ to $\mathcal{O}(nm^2)$. (μ and k are modeled by some parametric functions with hyperparameters θ)

These inducing points \mathbf{Z} can be learned with the hyperparameters θ using the ELBO ε (stochastic optimization):
 $\varepsilon = \text{data driven term} + \text{regularization term}$ (Kullback-Leibler divergence)

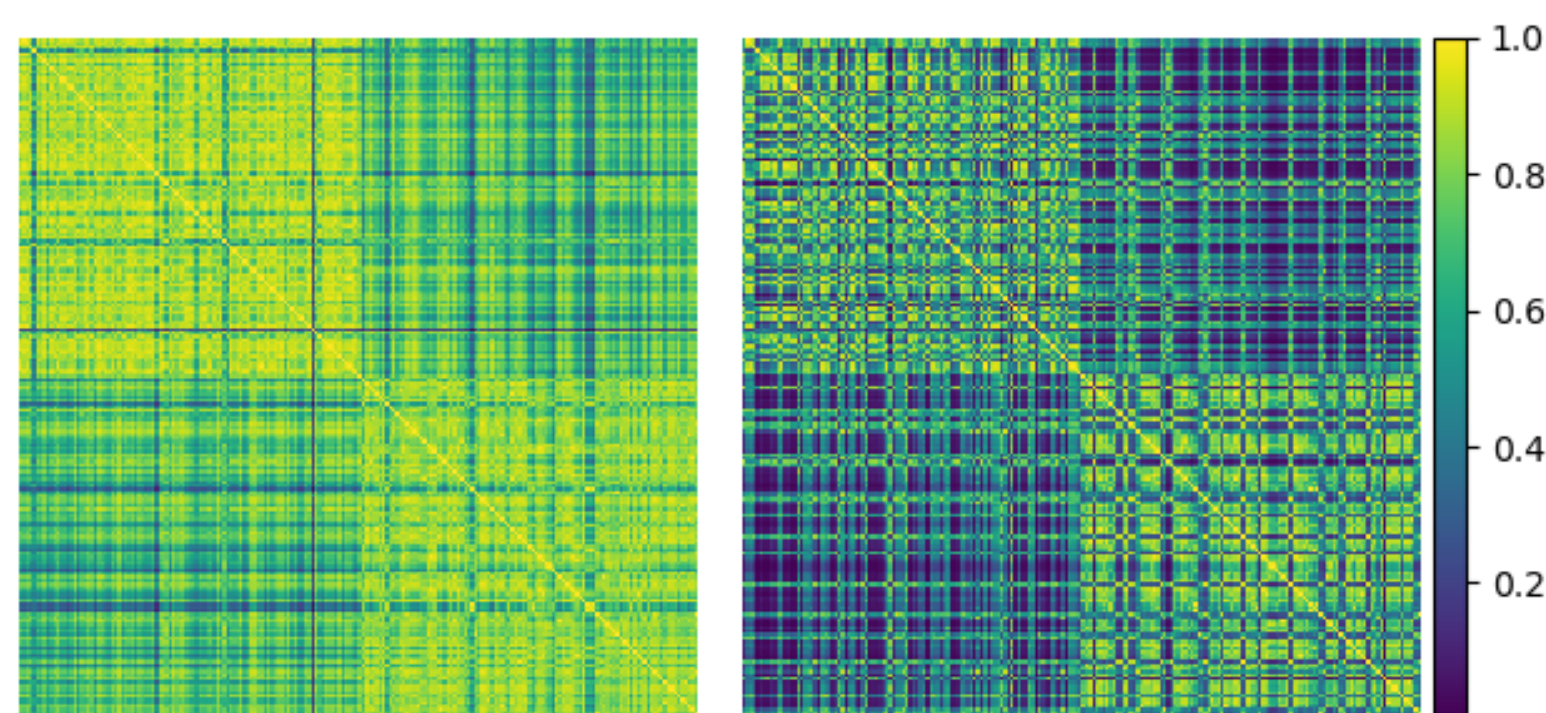


Multi-output GP Classification

Sparse GP

Stochastic Variational SGP

Spectro-temporal and spatial covariates:



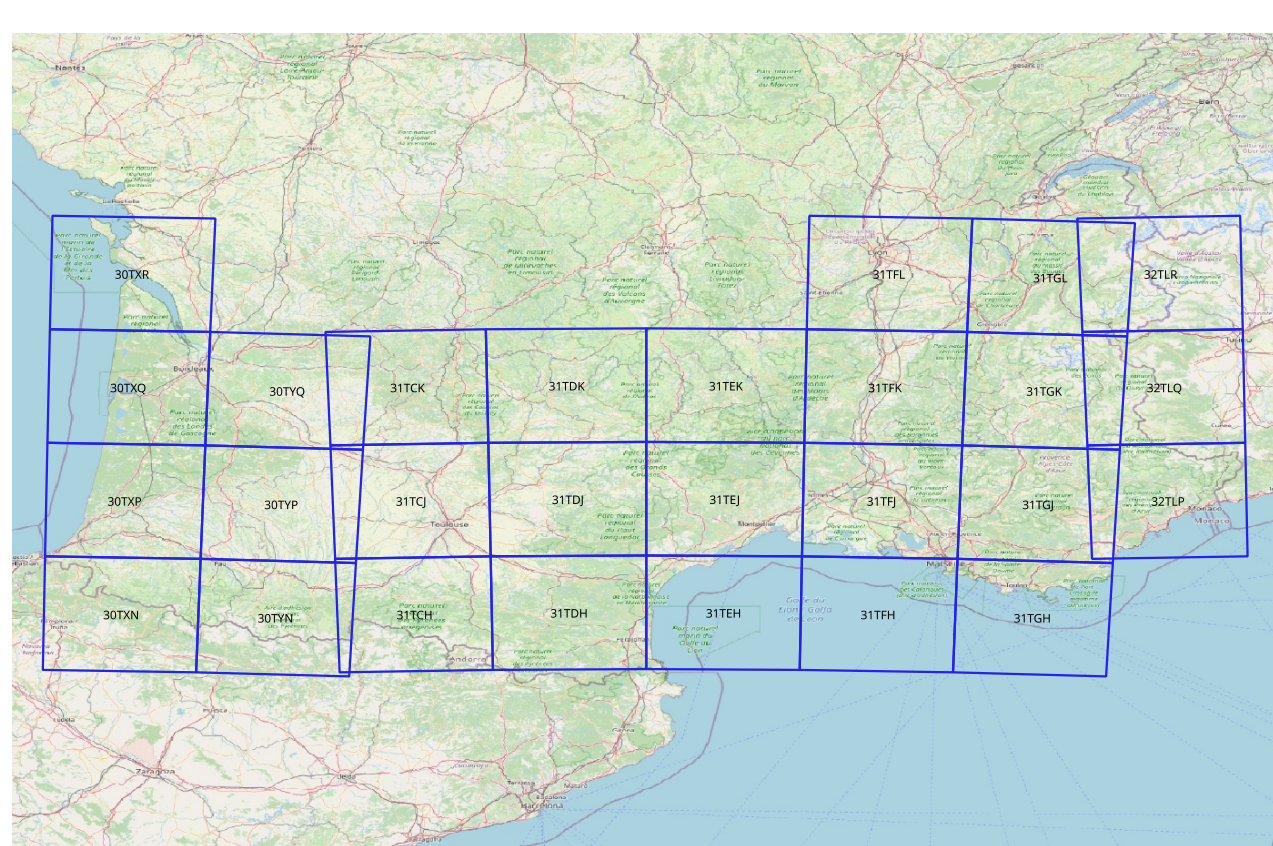
Spectro-temporal kernel Spatio-spectro-temporal kernel

1. λt -GP: $k(\mathbf{x}, \mathbf{x}') = k_M(\mathbf{x}_M, \mathbf{x}'_M)$
2. $\phi \lambda$ -GPSC: $k(\mathbf{x}, \mathbf{x}') = \alpha_0^2 \times k_\phi(\mathbf{x}_\phi, \mathbf{x}'_\phi) + \alpha_M^2 \times k_M(\mathbf{x}_M, \mathbf{x}'_M)$
3. $\phi \lambda$ -GPPC: $k(\mathbf{x}, \mathbf{x}') = k_\phi(\mathbf{x}_\phi, \mathbf{x}'_\phi) \times k_M(\mathbf{x}_M, \mathbf{x}'_M)$

$$\mathbf{x} = \{\mathbf{x}_\phi, \mathbf{x}_M\}$$

Experimental setup

Study area:



SITS and reference data

- 27 Sentinel-2 tiles
- acquisitions of level-2A from January to December 2018 linearly resampled (interval of 10 days) (total of 37 virtual dates)
- 13 spectral features λt : 10 spectral-bands (10m ground sampling distance) + 3 spectral indices (NDVI, NDWI, brightness)
- 2 spatial features ϕ : geographic coordinates (latitude, longitude) in meters in Lambert 93 projection
- 23 land cover classes ranging from artificial areas to vegetation and water bodies
- ~ 5 TB

Color	Name	Area (km ²)
Blue	Continuous urban fabric	104
Light Blue	Discontinuous urban fabric	654
Yellow	Industrial and commercial units	564
Light Green	Road surfaces	62
Green	Rapeseed	297
Light Green	Straw cereals	564
Light Green	Protein crops	150
Light Green	Soy	470
Light Green	Sunflower	1441
Light Green	Corn	1030
Light Green	Rice	77
Light Green	Tubers / roots	49

Color	Name	Area (km ²)
Light Green	Grasslands	1167
Light Green	Orchards and fruit growing	93
Light Green	Vineyards	523
Light Green	Broad-leaved forest	1593
Light Green	Coniferous forest	4934
Light Green	Natural grasslands	3386
Light Green	Woody moorlands	1713
Light Green	Natural mineral surfaces	1680
Light Green	Beaches, dunes and sand plains	126
Light Green	Glaciers and perpetual snows	164
Light Green	Water bodies	14567

Results

Quantitative results: (first line: dataset A, second line: dataset B)

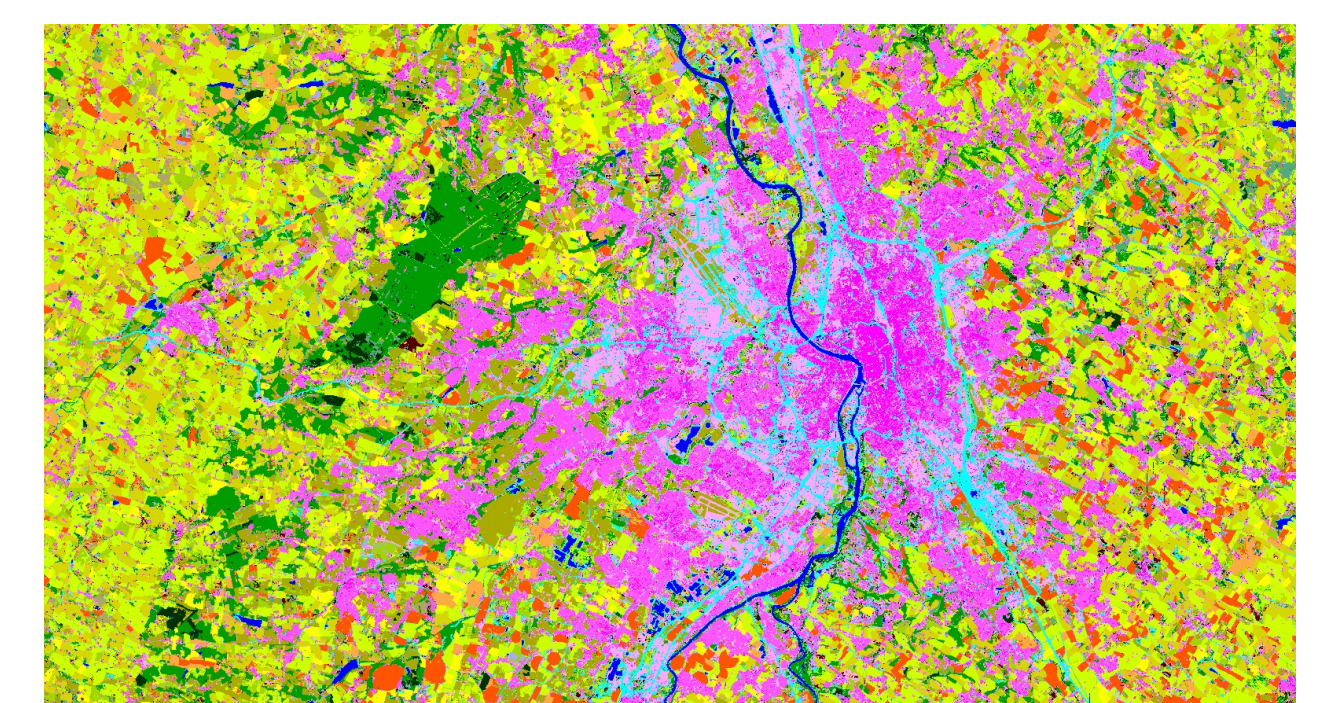
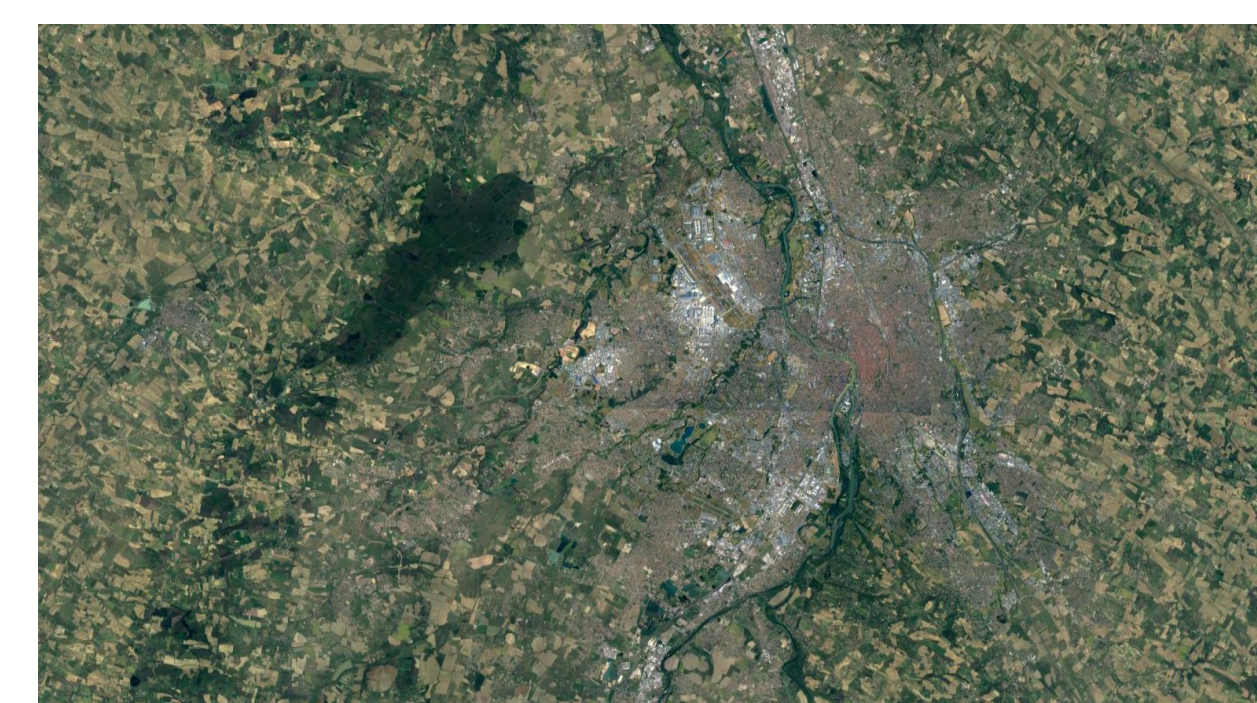
Stratification configuration

	λ -GP	$\phi \lambda$ -GPSC	$\phi \lambda$ -GPPC	λ -RF	$\phi \lambda$ -RF	λ -MLP	$\phi \lambda$ -MLP
oa	77.2 ± 0.3	78.2 ± 0.4	78.6 ± 0.3	75.6 ± 0.1	76.8 ± 0.1	75.5 ± 0.3	76.0 ± 0.2
fscore	77.5 ± 0.3	76.1 ± 0.4	76.7 ± 0.3	75.5 ± 0.2	76.5 ± 0.1	77.1 ± 0.3	77.6 ± 0.3

Global configuration

	λ -GP	$\phi \lambda$ -GPSC	$\phi \lambda$ -GPPC	λ -RF	$\phi \lambda$ -RF	λ -MLP	$\phi \lambda$ -MLP
oa	76.6 ± 0.6	79.3 ± 0.5	79.7 ± 0.6	75.3 ± 0.1	76.2 ± 0.1	77.7 ± 0.1	78.6 ± 0.1
fscore	77.5 ± 0.6	80.3 ± 0.5	80.7 ± 0.6	76.4 ± 0.2	77.4 ± 0.2	78.6 ± 0.1	79.5 ± 0.1

Qualitative results: (with stratification configuration using *iota2* chain with the model λ -GP)

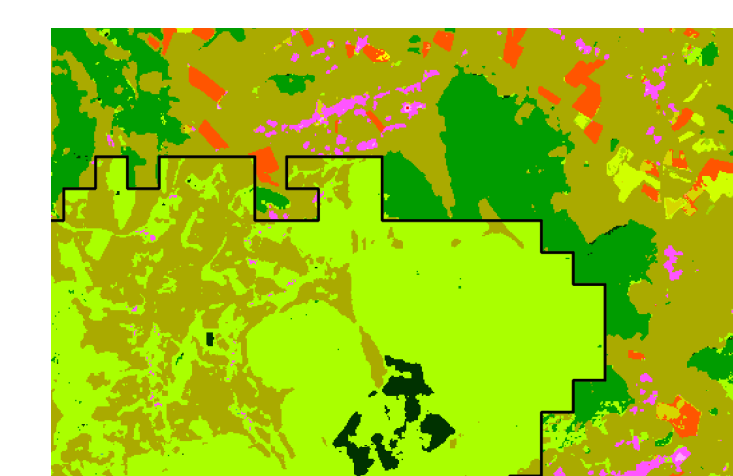
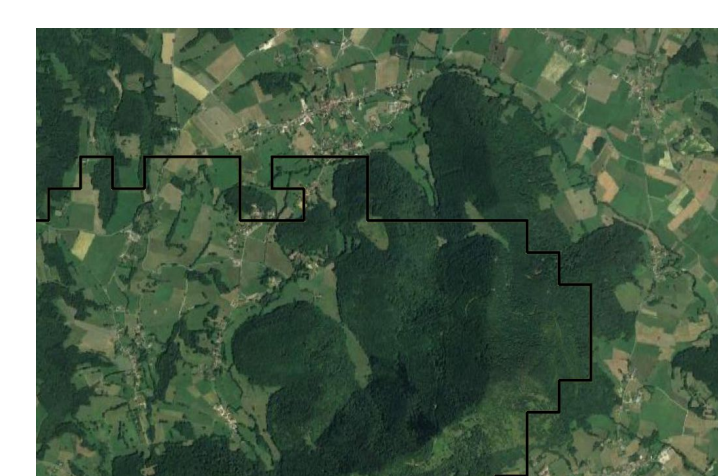


Perspectives

• Dimensionality reduction

Optimization of the inducing points $\mathbf{Z} = \{\mathbf{z}_i\}_{i=1}^m$ with $\mathbf{z}_i \in \mathbb{R}^{\phi+\lambda}$ can be difficult for large dimension: feature reduction.

• Spatial constraints in boundary zones:



Join optimization between models of 2 regions [5]:

$$\mathcal{L}_1 + \mathcal{L}_2 + \lambda R(f_1, f_2)$$

- \mathcal{L}_1 : ELBO region 1
- \mathcal{L}_2 : ELBO function region 2
- $f_1 = f_2$ in boundary zones

References

- [1] Jordi Inglada et al. "Operational High Resolution Land Cover Map Production at the Country Scale Using Satellite Image Time Series". en. In: *Remote Sensing* 9.1 (Jan. 2017). Number: 1 Publisher: Multidisciplinary Digital Publishing Institute, p. 95. doi: 10.3390/rs9010095. URL: <https://www.mdpi.com/2072-4292/9/1/95> (visited on 09/30/2020).
- [2] Pierre Soille et al. "A versatile data-intensive computing platform for information retrieval from big geospatial data". In: *Future Gener. Comput. Syst.* 81 (2018), pp. 30-40. URL: <https://doi.org/10.1016/j.future.2017.11.007>.
- [3] Andrew G Wilson et al. "Stochastic Variational Deep Kernel Learning". In: *Advances in Neural Information Processing Systems*. Vol. 29, 2016.
- [4] Gustau Camps-Valls et al. "A Survey on Gaussian Processes for Earth-Observation Data Analysis: A Comprehensive Investigation". In: *IEEE Geoscience and Remote Sensing Magazine* 4.2 (2016), pp. 58-78. doi: 10.1109/IGARS.2015.2510094.
- [5] Chiwoo Park and Daniel Apley. "Patchwork Kriging for Large-scale Gaussian Process Regression". en. In: (), p. 43.

Acknowledgements

This work is supported by the Natural Intelligence Toulouse Institute (ANITI) from Université Fédérale Toulouse Midi-Pyrénées under grant agreement ANITI ANR-19-P3A-0004 (this PhD is co-funded by CS-Group and by the Centre National d'Etudes Spatiales (CNES)). Special thanks to Benjamin Tardy for the support.