



HAL
open science

The Length of Telomeres and the Baseline Level of Cytogenetic Damage in Leukocytes of Lung Cancer Patients

V.G. Druzhinin, E Baranova, V.P. Volobaev, V.I. Ivanov, A.V. Larionov, V.I. Minina, F. Smagulova, L. Legoff, V.A. Titov, A. Fucic

► **To cite this version:**

V.G. Druzhinin, E Baranova, V.P. Volobaev, V.I. Ivanov, A.V. Larionov, et al.. The Length of Telomeres and the Baseline Level of Cytogenetic Damage in Leukocytes of Lung Cancer Patients. *Genetika / Russian Journal of Genetics*, 2022, 58 (1), pp.73-84. 10.1134/S1022795422010021 . hal-03719726

HAL Id: hal-03719726

<https://hal.science/hal-03719726v1>

Submitted on 19 Jul 2022

HAL is a multi-disciplinary open access archive for the deposit and dissemination of scientific research documents, whether they are published or not. The documents may come from teaching and research institutions in France or abroad, or from public or private research centers.

L'archive ouverte pluridisciplinaire **HAL**, est destinée au dépôt et à la diffusion de documents scientifiques de niveau recherche, publiés ou non, émanant des établissements d'enseignement et de recherche français ou étrangers, des laboratoires publics ou privés.

HUMAN GENETICS

UDC 575.224:616.006.6

The Length of Telomeres and the Baseline Level of Cytogenetic Damage in Leukocytes of Lung Cancer Patients

V. G. Druzhinin^{a, *}, E. D. Baranova^a, V. P. Volobaev^a, V. I. Ivanov^c, A. V. Larionov^a, V. I. Minina^{b, c}, F. Smagulova^d, L. Legoff^d, V. A. Titov^e, and A. Fucic^f

Translated by D. Novikova

^aKemerovo State University, Kemerovo, 650000 Russia

^bFederal Research Center of Coal and Coal Chemistry, Siberian Branch, Russian Academy of Sciences, Kemerovo, 650065 Russia

^cKemerovo State Medical University, Kemerovo, 650056 Russia

^dUniversity of Rennes, EHESP, Inserm, Irset (Institut de recherche en santé, environnement et travail)---UMR_S 1085, Rennes, F-35200 France

^eKemerovo Regional Oncological Dispensary, Kemerovo, 650036 Russia

^fInstitute for Medical Research and Occupational Health, Zagreb, 10000 Croatia

**e-mail: druzhinin_vladim@mail.ru*

Received April 7, 2021;

revised June 21, 2021;

accepted July 12, 2021

Abstract---Despite the great efforts of basic and clinical research on lung cancer (LC), the prevention and treatment of this type of cancer show still far from satisfactory indicators. The complex mechanisms of the LC biology are already recognized, but there is a significant gap in the knowledge about the interaction of key biomarkers in the etiology and progression of this disease. The present work is aimed at studying the relationship between the telomere length (TL) and frequencies of chromosomal aberrations (CA) and micronuclei (MN) in leukocytes of primary lung cancer patients. In 67 men with lung cancer and 77 control donors (men), the baseline frequencies of CA and MN were determined in blood leukocytes, and TL was also studied. As a result, a significant increase in TL was found in lung cancer patients compared with control donors (25.86 ± 2.13 versus 15.29 ± 1.22 , respectively, $p = 0.00001$). In leukocytes of LC patients, a significant increase in the baseline level of structural aberrations of chromosomes, as well as micronuclei containing centromeres, was noted. Only in the sample of lung cancer patients were direct correlations of

TL with the frequency of chromosomal type aberrations and with the frequency of paired fragments revealed. In the same sample, significant inverse correlations of TL with the frequency of binucleated leukocytes containing nuclear protrusions and with the frequency of cells entering apoptosis were recorded. The study first showed that an increase in TL in lung cancer patients is associated with structural chromosomal damages, but not with the incidence of aneuploidies.

Keywords: lung cancer, leukocytes, genome instability, telomere length, chromosomal aberrations, micronuclei

Telomeres maintain the integrity of chromosomes by closing their ends and providing protection against degradation and fusion during the cell cycle. The structure of telomeres in humans consists of 1000–2000 repeats of TTAGGG sequences associated with complexes of six shelterins. With age, there is a gradual depletion of telomeres and a reduction in their length [1]. Shorter telomeres were shown to correlate with increased levels of inflammation and oxidative stress [2, 3].

Previously, correlations between the telomere length (TL) in leukocytes and various diseases such as atherosclerosis, heart failure, type 2 diabetes mellitus, chronic psychosocial stress, depression, dementia, Alzheimer's disease, and cancer were found [4–9]. There is an opinion that short telomeres in combination with other mechanisms of carcinogenesis can lead to genome instability, which is typical for many types of cancer [10]. Thus, TL in peripheral blood leukocytes appears to be a marker of the susceptibility to many types of cancer: breast, lung, bladder, head and neck, and pancreatic cancer [11–14]. However, recent epidemiological data showed that not only short but also long telomeres of lymphocytes may be associated with an increased risk of cancer [15, 16].

Correlations between TL and chromosomal aberrations (CA) were observed in blood leukocytes of healthy people [17], in cells of solid tumors [18], and in patients with different types of leukemia [19, 20]. Genome instability (point mutations, structural and numerical chromosome abnormalities) is one of the fundamental mechanisms of malignant transformation [21–23] and a significant biomarker of cancer risk [24, 25]. This is an early event in carcinogenesis, often found in cells of newly diagnosed (untreated) patients with various types of cancer [26–33]. It was shown that increased frequencies of CA and micronuclei (NM) are predictors of the risk of developing cancer in human populations [34–37]. Meta-analysis of MN frequencies in leukocytes of untreated patients with different types of cancer showed that 72% of the samples demonstrated an increase in the baseline MN level compared with control donors [38]. A similar increase in CA levels was recorded in cancer

patients before starting therapy [39]. However, the potential of both biomarkers for practical assessment of cancer risk and detection of genome instability during cancer progression has not yet been fully exploited.

Lung cancer (LC) is one of the most common malignant tumors and one of the leading causes of death from cancer worldwide. In particular, death from lung cancer in men accounts for about 1/3 of deaths from all malignant neoplasms [40]. The etiology of LC is characterized by aneuploidy and genome instability, which are observed in patients before the therapy, but also have a strong effect on the survival of already treated patients [41–44]. Thus, the study of genome instability in LC is of great importance for early diagnosis and recognition of high-risk patients, as well as for tracking the results of the therapy, especially depending on the type of LC, which was shown to have different biology [45]. In this study, we first compare the data on TL with the baseline frequencies of cytogenetic damage in blood leukocytes of untreated LC patients.

MATERIALS AND METHODS

Characteristics of Studied Groups

The length of telomeres and the baseline frequencies of CA and MN were studied in peripheral blood leukocytes of 60 patients with primary diagnosed lung cancer (only men, the average age of 59.64 ± 1.15 years) admitted to the Kemerovo Regional Oncological Dispensary and in 77 healthy male donors, residents of Kemerovo (the average age of 59.49 ± 0.75 years). There was no significant difference in age between LC patients and the control group ($p = 0.09$). Among LC patients, 61.2% were active smokers, while in the control sample, approximately equal numbers of smokers and nonsmokers were registered (Table 1).

For this study, blood samples from LC patients were taken upon admission to the clinic prior to any diagnostic and therapeutic procedures. The sample included patients who met the following criteria: no infectious diseases at the time of sampling and no occupational exposure to ionizing radiation or known chemical mutagens/carcinogens. In total, 52.2% of patients were diagnosed with squamous cell lung cancer, 25.4% with adenocarcinoma, 10.5% with small cell lung cancer, and 11.9% with other types of lung cancer (non-small cell, large cell, neuroendocrine, mesenchymal). For each patient, the stage of the disease was determined on the basis of the TNM classification (tumor, node, metastases) in accordance with the Goldstraw recommendation [46]. On this basis, 41.9% of patients were in stages I–II, 58.1% were in stages III–IV, and 14.7% of patients had metastases to distant organs. The description of this group is presented in Table 1.

All participants were informed about the purpose, methodology, and potential risks of the study; an informed consent was signed by each donor. The study was carried out in accordance with the requirements of the Ethics Committee of Kemerovo State University.

Telomere Length Measurement

To study the relative telomere length, quantitative PCR (QPCR) was used according to the protocol [47]. In each sample, the ratio of the copy number of telomeric repeats to the copy number of a single gene (T/S) of the 36B4u ribosomal phosphoprotein, also known as *RPLPO*, was determined. This ratio is proportional to the average telomere length. The concentration of studied DNA was previously measured on a Quantus fluorometer (E6150, Promega) using the Quantiflor dsDNA system (E2670, Promega). The mix for each QPCR reaction contained 5 μ L of Syber Green Master Mix (iTag Universal SYBR green Supermix, Biorad), 0.9 μ L of nuclease-free H₂O; 0.05 μ L of each primer, and 0.4 ng of DNA. To amplify telomeric sequences, primers telg 5'-CGG TTT GTT TGG GTT TGG GTT TGG GTT TGG GTT TGG GTT-3' and telc 5'-GGC TTG CCT TAC CCT TAC CCT TAC CCT TAC CCT TAC CCT-3' were used. Primers albc 5'-CAG CAA GTG GGA AGG TGT AAT CC-3' and albd 5'-CCC ATT CTA TCA TCA ACG GGT ACA A-3' were used to amplify the single copy 36B4u reference gene [47]. QPCR conditions were set at 95°C for 3 min, followed by 40 cycles at 95°C for 15 s and 60°C for 1 min, followed by HRM from 65°C to 95°C in increments of 0.5°C. PCR was performed three times; average values were used for analysis. QPCR results were analyzed using Bio-Rad CFX384 Manager™ software. For each sample, a threshold amplification cycle, in which the fluorescence intensity exceeded the background level (Ct), was noted for both genes. Next, the Δ Ct index as the difference in the threshold cycle for the telomeric sample and the reference sample of the same sample was calculated (Δ Ct = Ct^{tel} – Ct^{36B4}). As a result, the relative number of telomeric repeats to the single copy 36B4u gene was determined by the formula $T/S = 2^{(-\Delta Cq)}$.

Analysis of Chromosomal Aberrations

Heparinized samples of peripheral whole blood were cultured in RPMI-1640 medium (PanEco) supplemented with 20% fetal calf serum (Gibco) and 2% phytohemagglutinin (PanEco) for 48 h at 37°C. Colchicine (0.05 mg/mL) (PanEco) was added to the cultures 2 h before fixation. After the end of incubation, the cell cultures were treated with a hypotonic solution of 0.55% KCl for 20 min at 37°C. The material was fixed in three changes of the cooled Carnoy's fixative (methanol and glacial acetic acid in the ratio of 3 : 1). The resulting

suspension was dropped onto clean glass slides, cooled and moistened with water. The preparations were encrypted and stained with a 2% Giemsa dye solution (Merck).

Consideration of metaphases included in the analysis and criteria for registration of cytogenetic damages were consistent with generally accepted recommendations [48]. The following indicators were considered: the proportion of aberrant metaphases, the frequency of chromatid-type aberrations (single fragments, chromatid exchanges), the frequency of chromosomal aberrations (paired fragments, dicentric and ring chromosomes, atypical monocentrics). Achromatic gaps were not included in the number of aberrations and were not considered.

Analysis of Micronuclei in the Culture of Leukocytes with Cytokinesis Block

Micronuclei and other cytogenetic disorders were determined according to the standard CBMN protocol [49] using modifications proposed by F.I. Ingel [50]. In a culture flask containing 3.8 mL of culture medium (RPMI-1640 medium + 20% bovine serum + 100 U/mL penicillin), 0.2 mL of whole blood was placed. Phytohemagglutinin (PanEco) was added to the flasks at the final concentration of 6 µg/mL and cultured for 44 h at 37°C. After 44 h from the start of incubation, 48 µL of cytochalasin B (Applichem GmbH) was added to each culture, and they were cultured for another 24 h at the same temperature. At the end of the cycle, the cells were fixed in accordance with the protocol, and final suspensions were dropped onto cooled glass slides. The preparations were encrypted and stained with a 2% Giemsa dye solution (Merck) for 15 min. The preparations were analyzed under a Nikon Eclipse 80i microscope at a magnification of ×1000.

The proliferative pool was analyzed in each preparation: 500 cells with different numbers of nuclei were counted, and cells at the stage of apoptosis and mitosis were also considered. Then, in other areas of the glass, another 1000 only binucleated lymphocytes were counted, in which various types of cytogenetic damage, such as frequencies of binucleated lymphocytes with MN, frequencies of cells with nucleoplasmic bridges, frequencies of cells with nuclear protrusions, were recorded. Additionally, the index of the number of mononuclear lymphocytes with MN was calculated.

Analysis of Micronuclei in Leukocyte Culture Using Pancentromeric DNA Probes

To identify centromere-positive (CEN+) or centromere-negative (CEN-) micronuclei in lymphocytes, the method of fluorescence in situ hybridization (FISH) with pancentromeric DNA probes was used. The final preparations were washed in 2x SSC three times for 5 min,

DNA denaturation was carried out for 5 min in a solution of 0.01% pepsin, and then they were fixed in 1% paraformaldehyde for 10 min and washed in 1x PBS for 5 min. The preparations were dehydrated by wiring in a battery of alcohols of ascending concentration (70, 90, 100%) for 2 min and dried at room temperature. Dry preparations were loaded with 10 μ L probes, covered with cover slips, and placed in a hybridizer (ThermoBrite), 5 min at 75°C, 20 h at 37°C. After hybridization, the cover slips were removed and washed in solutions WT1 (2 mL 20x SSC + 98 mL water + 300 μ L Nonidet) for 1 min and WT2 (10 mL 20x SSC + 90 mL water + 100 μ L Nonidet) for 2 min (cuvettes with solutions were placed in a water bath heated to 71–72°C). Then the slides were washed in water for 3 min and dried at room temperature in the dark. Dry slides were coated with 5 μ L of Prolong Gold antifade with DAPI and covered with cover slips. Contrast staining after washes was performed with DAPI mixed with Prolong Gold Antifade mounting medium (Thermo Fisher Scientific). The slides were stored in the dark at 4–10°C until microscopic analysis.

The analysis was performed using a fluorescence microscope (Axioskop-Zeiss) equipped with filters for DAPI (blue) and FITC (green) and connected to a computer equipped with ISIS software version 5.0 (MetaSystems) for collecting and analyzing objects with MN. A total of 1000 binucleated leukocytes were studied in 38 patients with lung cancer and 37 control donors.

Statistical Analysis

Statistical processing of the results of the study was carried out using the StatSoft STATISTICA 7.0 program. The quantitative indicators were assessed by calculating the mean values (μ) and standard errors of the mean (SE). The frequency distribution of cytogenetic indicators was checked using the Kolmogorov–Smirnov test. Comparison of the groups was performed using the Mann–Whitney *U* test and Fisher’s exact test. The correlation between indicators for cases with abnormal data distribution was calculated with employment of nonparametric statistics using the Spearman’s correlation coefficient.

RESULTS

Telomere Length in Leukocytes of Lung Cancer Patients and Control Donors

Figure 1 shows the results of the TL measurement in leukocytes of lung cancer patients and control donors. Obviously, the mean T/S value is significantly higher in the patients compared with the control (25.86 ± 2.13 versus 15.29 ± 1.22 ; $p = 0.00001$). When comparing TL in subgroups of patients with different pathomorphological types of lung cancer, no

differences were found between them. In particular, the T/S values were 24.63 ± 3.05 in patients with squamous cell LC, 29.60 ± 5.13 in patients with adenocarcinoma, and 27.52 ± 5.72 in patients with small cell LC. LC patients with stages I–II, according to the TNM classification, had an average value of the relative telomere length of 26.6 ± 3.39 , and those with stages III–IV had 25.81 ± 2.74 ($p > 0.05$). There were also no differences in TL when comparing subgroups of patients with metastases to distant organs and without them (30.86 ± 5.79 versus 25.54 ± 2.35 ; $p > 0.05$). Finally, age and smoking status did not affect in any way the DL parameters either in the sample of patients or in the control.

Baseline Frequencies of Chromosomal Aberrations in Leukocytes of Lung Cancer Patients and Control Donors

LC patients had a significant increase in the proportion of aberrant metaphases compared with control donors ($4.4 \pm 0.25\%$ versus $2.11 \pm 0.14\%$; $p < 0.0001$). They also showed a significant increase in the frequency of chromatid-type aberrations, such as single fragments ($2.95 \pm 0.24\%$ versus $1.46 \pm 0.11\%$; $p < 0.0001$) and chromatid exchanges ($0.1 \pm 0.03\%$ versus $0.03 \pm 0.02\%$; $p = 0.003$) compared with the control group. Finally, there is a significant increase in chromosomal aberrations, such as paired fragments ($1.1 \pm 0.14\%$ versus $0.46 \pm 0.06\%$; $p < 0.0001$) and chromosomal exchanges ($0.53 \pm 0.08\%$ versus $0.26 \pm 0.05\%$; $p = 0.002$) in LC patients compared with the control group (Table 2).

Correlation analysis showed that the Spearman's coefficient was not significant when comparing the frequency of CA with age ($p = 0.27$ for patients and $p = 0.73$ for the control). Also, no significant differences were found in the frequencies of CA between the subgroups of patients with different histological types of LC and stages of the tumor process. Finally, the proportion of aberrant metaphases was not significantly increased in leukocytes of smokers with LC compared with nonsmokers ($4.63 \pm 0.32\%$ versus $3.98 \pm 0.42\%$; $p = 0.31$) and did not differ between smokers and nonsmokers in control donors ($2.02 \pm 0.16\%$ versus $2.2 \pm 0.23\%$; $p = 0.67$).

Baseline Frequencies of Micronuclei in Leukocytes of Lung Cancer Patients and Control Donors

The results of micronucleus analysis of lymphocytes cultured under conditions of the cytokinetic block are summarized in Table 3. As in the case of the test on identification of CA, significant unidirectional differences in the level of cytogenetic markers were revealed between patients and controls. LC patients demonstrate an increased frequency of binucleated leukocytes with one MN ($1.31 \pm 0.1\%$ versus $0.78 \pm 0.05\%$; $p < 0.0001$) and binucleated

leukocytes with two MN ($0.14 \pm 0.02\%$ versus $0.09 \pm 0.01\%$; $p < 0.05$) and total frequency of binucleated cells with MN ($1.49 \pm 0.11\%$ versus $0.86 \pm 0.06\%$; $p < 0.0001$) compared with the control.

The frequency of mononuclear leukocytes with MN was $0.33 \pm 0.05\%$ in LC patients and $0.23 \pm 0.03\%$ in the control group ($p > 0.05$). There were also no differences in the frequency of cells with protrusions between the compared samples: $1.77 \pm 0.14\%$ in patients and $1.69 \pm 0.12\%$ in the control. The frequency of binucleated leukocytes with nucleoplasmic bridges was significantly increased in LC patients ($0.2 \pm 0.02\%$) compared with the control ($0.12 \pm 0.02\%$; $p < 0.001$). In addition, in the total pool of analyzed cytological objects in patients, a significant decrease in the frequency of cells with signs of apoptosis was found in comparison with the control ($1.32 \pm 0.89\%$ versus 2.18 ± 1.56 ; $p < 0.003$). The age of the subjects, as well as the smoking factor did not affect the results of MN analysis either in the sample of patients with LC or in the control group. Comparison of patient subgroups with three main pathomorphological forms of lung cancer (squamous cell, adenocarcinoma, small cell) did not reveal significant differences in the results of MN analysis.

In order to assess the differential contribution of CEN+ and CEN- micronuclei to the total MN index in leukocytes of 38 LC patients and 37 control donors, an additional cytogenetic analysis was performed using pancentromeric DNA probes, the results of which are presented in Table 4. The total frequency of MN was $1.43 \pm 0.1\%$ in the group of LC patients and $0.87 \pm 0.07\%$ in the control group ($p = 0.00001$). At the same time, only CEN+ MN was significantly higher in leukocytes of patients compared with the control ($0.83 \pm 0.08\%$ and $0.32 \pm 0.03\%$; $p = 0.00001$), while the frequencies of CEN- between the compared samples did not differ significantly.

Relationship between the Telomere Length and Cytogenetic Damage in Leukocytes

The relationship between TL and structural damage of chromosomes was assessed using the Spearman's correlation coefficient. There was no relationship between TL and the proportion of aberrant metaphases in both groups: in patients ($p = 0.238$) and in the control ($p = 0.662$). Also, there was no significant correlation between TL and the frequency of chromatid-type aberrations in LC patients ($p = 0.903$) and in the control ($p = 0.972$). However, Spearman's correlation coefficient for TL with chromosomal aberrations turned out to be significant in the sample of LC patients ($R = 0.3$; $p = 0.02$) and insignificant in the group of control donors (Fig. 2). Also the correlation of TL with paired fragments was significant in LC patients ($R = 0.36$; $p = 0.004$), while this was not observed in the control group (Fig. 3).

No relationship between frequencies of TL and MN in leukocytes of LC patients and in control donors was revealed ($p > 0.05$). However, an inverse relationship was found between TL and the frequency of binucleated leukocytes with protrusions ($R = -0.27$; $p = 0.04$) in LC patients (Fig. 4). An inverse correlation was also found for TL and the frequency of cells with signs of apoptosis ($R = -0.31$; $p = 0.02$) in LC patients (Fig. 5). No significant correlations were found between these biomarkers for control donors.

DISCUSSION

To date, the relationship between the telomere length and the risk of malignant tumors remains largely controversial and requires further study. There is an opinion that not only a decrease but also a lengthening of TL may be associated with the risk of developing cancer. In the present study, performed in accordance with the case--control design, LC patients had significantly longer telomeres in leukocytes compared with healthy donors. This fact is in line with previously published cohort studies of male smokers in Finland [51] and Asian nonsmoking women [52]. The association between longer telomeres in leukocytes with the risk of lymphoma and melanoma was also established [9, 51, 53–55].

There were no significant differences in TL between patients with different histological LC subtypes (squamous cell carcinoma, adenocarcinoma and small cell carcinoma), different cancer stages, or different smoking status. However, dividing the general sample into subgroups leads to a significant decrease in the number of compared cases, which may well affect the reliability of the results of comparison. It is obvious (Fig. 1) that dispersion of individual values of TL in LC patients is greater than in control donors, and this suggests that an increase in compared samples of patients with different histological types of LC at different stages of the disease in the future will reveal the relationship of TL to these factors.

The telomere length paradox has been widely discussed in recent years. It is known that older people, whose telomeres in somatic cells are shorter than in young people, have an increased susceptibility to major types of cancer [10]. However, constitutively long telomeres can provide additional rounds of cell division. This, in turn, increases the risk of accumulating somatic mutations that block the pathways to cell aging and apoptosis and promote tumorigenesis. Various mathematical hypotheses and models were proposed to resolve the telomere length paradox and its relationship with cancer [56–58]. For example, it was suggested that the role of TL varies depending on the stage of carcinogenesis [15]. According to this hypothesis, the first stage in a two-stage model of carcinogenesis (accumulation of mutations in multipotent dividing stem cells) occurs regardless of the length of individual telomeres. At the same time, the telomere length begins to play a key role in the progression

of cancer at its second stage, clonal expansion. Thus, this model emphasizes that constitutively long telomeres do not cause cancer, but may contribute to carcinogenesis.

Carcinogenesis is often considered as the result of a series of driver mutations, genomic instability, and selection of cells with a replicative advantage [59]. People with longer telomeres have an increased risk of clonal cell expansion with DNA damage.

Significantly increased baseline frequencies of MN and CA in leukocytes of LC patients shown in our study are consistent with the data of other authors on genome instability in this type of cancer [33, 42, 60–62]. At the same time, the use of FISH technology with pancentromeric DNA probes first showed that aneuploidies (CEN+ micronuclei) play a significant role in the total pool of cytogenetic disorders in lymphocytes of LC patients, which confirms the importance of genomic type mutations in the etiology and pathogenesis of this type of cancer [63].

The present study first showed the direct relationship between chromosomal aberrations, paired fragments, and TL, which was found only in patients with LC, but not in control donors. In addition, an interesting observation is the inverse correlation between TL and the frequency of leukocytes with nuclear protrusions, as well as the inverse correlation of TL with the frequency of cells entering apoptosis. It can be assumed that incomplete or insufficient repair of DNA double-strand breaks in LC patients is manifested by the accumulation of chromosomal aberrations and protrusions. As for the presence of a feedback between TL and apoptosis, it confirms the fact that constitutively long telomeres allow cells with accumulated damage to escape from the systems of programmed death.

The absence of a relationship between the frequency of MN and TL is probably associated with the fact that an increase in the frequency of MN in patients is mainly a consequence of aneuploidies arising from defects in the control point of the spindle assembly [64].

In the group of control donors, no associations were found between TL and any cytogenetic damage. Earlier studies of healthy men in Norway showed that an increased frequency of chromosomal aberrations in leukocytes is associated with a shorter telomere length [17]. It can be assumed that, in healthy control subjects, spontaneous chromosomal aberrations and TL are in equilibrium, which is disturbed when genome damage and other mechanisms of carcinogenesis trigger an irreversible process of neoplastic transformation.

Thus, our study shows that, in the complex LC biology, the genome damage of somatic cells is associated with longer telomeres. Further efforts in this direction should be focused on a comparative study of representative samples of patients with main histological forms of LC at different stages of the disease. It can be expected that the results of these studies will

provide a better understanding of the significance of TL as a biomarker of bronchogenic cancer progression.

ACKNOWLEDGMENTS

We are grateful to the doctors and the staff of the Kemerovo Regional Oncological Dispensary, to all the surveyed persons who voluntarily participated in this study, and to the employees of the Kemerovo State University and the Institute of Human Ecology who participated in organizing and conducting this study.

FUNDING

This work was financially supported by the Russian Science Foundation, project no. 18-14-00022.

COMPLIANCE WITH ETHICAL STANDARDS

Conflict of interest. The authors declare that they have no conflict of interest.

Statement of compliance with standards of research involving humans as subjects. All procedures performed in studies involving human participants were in accordance with the ethical standards of the institutional and/or national research committee and with the 1964 Helsinki Declaration and its later amendments or comparable ethical standards. Informed consent was obtained from all individual participants involved in the study.

REFERENCES

1. Blackburn, E.H., Greider, C.W., and Szostak, J.W., Telomeres and telomerase: the path from maize, *Tetrahymena* and yeast to human cancer and aging, *Nat. Med.*, 2006, vol. 12, no. 10, pp. 1133—1138. doi 10.1038/nm1006-1133
2. Kotrschal, A., Ilmonen, P., and Penn, D., Stress impacts telomere dynamics, *Biol. Lett.*, 2007, vol. 3, no. 2, pp. 128—130. doi 10.1098/rsbl.2006.0594
3. Wong, J.Y., Vivo, I.D., Lin, X., et al., The relationship between inflammatory biomarkers and telomere length in an occupational prospective cohort study, *PLoS One*, 2014, vol. 9, no. 1. e87348. doi 10.1371/journal.pone.0087348
4. Risques, R., Arbee, K., Yashin, A., et al., Leukocyte telomere length is associated with disability in older U.S. population, *J. Am. Geriatr. Soc.*, 2010, vol. 58, no. 7, pp. 1289—1298. doi 10.1111/j.1532-5415.2010.02948.x

5. Hochstrasser, T., Marksteiner, J., and Humpel, C., Telomere length is age-dependent and reduced in monocytes of Alzheimer patients, *Exp. Gerontol.*, 2012, vol. 47, no. 2, pp. 160—163. doi 10.1016/j.exger.2011.11.012
6. Epel, E.S., Blackburn, E.H., Lin, J., et al., Accelerated telomere shortening in response to life stress, *Proc. Natl. Acad. Sci. U.S.A.*, 2004, vol. 101, no. 49, pp. 17312—17315. doi 10.1073/pnas.0407162101
7. Tyrka, A.R., Price, L.H., Kao, H.T., et al., Childhood maltreatment and telomere shortening: preliminary support for an effect of early stress on cellular aging, *Biol. Psychiatry*, 2010, vol. 67, no. 6, pp. 531—534. doi 10.1016/j.biopsych.2009.08.014
8. Kuo, C.L., Pilling, L.C., Kuchel, G.A., et al., Telomere length and aging-related outcomes in humans: a Mendelian randomization study in 261 000 older participants, *Aging Cell*, 2019, vol. 18, no. 6. e13017. doi 10.1111/accel.13017
9. Haycock, P.C., Burgess, S., Nounu, A., et al., Association between telomere length and risk of cancer and non-neoplastic diseases: a mendelian randomization study, *JAMA Oncol.*, 2017, vol. 3, no. 5, pp. 636—651. doi 10.1001/jamaoncol.2016.5945
10. Maser, R.S. and DePinho, R.A., Connecting chromosomes, crisis, and cancer, *Science*, 2002, vol. 297, no. 5581, pp. 565—569. doi 10.1126/science.297.5581.565
11. Jang, J.S., Choi, Y.Y., Lee, W.K., et al., Telomere length and the risk of lung cancer, *Cancer Sci.*, 2008, vol. 99, no. 7, pp. 1385—1389. doi 10.1111/j.1349-7006.2008.00831.x
12. Luu, H.N., Huang, J.Y., Wang, R., et al., Association between leukocyte telomere length and the risk of pancreatic cancer: findings from a prospective study, *PLoS One*, 2019, vol. 14, no. 8. e0221697. doi 10.1371/journal.pone.0221697
13. Ennour-Idrissi, K., Maunsell, E., and Diorio, C., Telomere length and breast cancer prognosis: a systematic review, *Cancer Epidemiol. Biomarkers Prev.*, 2017, vol. 26, no. 1, pp. 3—10. doi 10.1158/1055-9965.EPI-16-0343
14. Machiela, M.J., Hsiung, C.A., Shu, X.O., et al., Genetic variants associated with longer telomere length are associated with increased lung cancer risk among never-smoking women in Asia: a report from the female lung cancer consortium in Asia, *Int. J. Cancer*, 2015, vol. 137, no. 2, pp. 311—319. doi 10.1002/ijc.29393
15. Aviv, A., Anderson, J.J., and Shay, J.W., Mutations, cancer and the telomere length paradox, *Trends Cancer*, 2017, vol. 3, no. 4, pp. 253—258. doi 10.1016/j.trecan.2017.02.005
16. McNally, E.J., Luncsford, P.J., and Armanios, M., Long telomeres and cancer risk: the price of cellular immortality, *J. Clin. Invest.*, 2019, vol. 129, no. 9, pp. 3474—3481. doi 10.1172/JCI120851

17. Li, H., Hilmarsen, H.T., Hossain, M.B., et al., Telomere length and LINE1 methylation is associated with chromosomal aberrations in peripheral blood, *Genes Chromosomes Cancer*, 2013, vol. 52, no. 1, pp. 1—10. doi 10.1002/gcc.22000
18. Stewénius, Y., Gorunova, L., Jonson, T., et al., Structural and numerical chromosome changes in colon cancer develop through telomere-mediated anaphase bridges, not through mitotic multipolarity, *Proc. Natl. Acad. Sci. U.S.A.*, 2005, vol. 102, no. 15, pp. 5541—5546. doi 10.1073/pnas.0408454102
19. Hartmann, U., Brümmendorf, T.H., Balabanov, S., et al. Telomere length and hTERT expression in patients with acute myeloid leukemia correlates with chromosomal abnormalities, *Haematologica*, 2005, vol. 90, no. 3, pp. 307—316.
20. Swiggers, S.J., Kuijpers, M.A., de Cort, M.J., et al., Critically short telomeres in acute myeloid leukemia with loss or gain of parts of chromosomes, *Genes Chromosomes Cancer*, 2006, vol. 45, no. 3, pp. 247—256. doi 10.1002/gcc.20286
21. Negrini, S., Gorgoulis, V.G., and Halazonetis, T.D., Genomic instability---an evolving hallmark of cancer, *Nat. Rev. Mol. Cell Biol.*, 2010, vol. 11, no. 3, pp. 220—228. doi 10.1038/nrm2858
22. Streffer, C., Strong association between cancer and genomic instability, *Radiat. Environ. Biophys.*, 2010, vol. 49, no. 2, pp. 125—131. doi 10.1007/s00411-009-0258-4
23. Tubbs, A. and Nussenzweig, A., Endogenous DNA damage as a source of genomic instability in cancer, *Cell*, 2017, vol. 168, no. 4, pp. 644—656. doi 10.1016/j.cell.2017.01.002
24. Alidousty, C., Baar, T., Martelotto, L.G., et al., Genetic instability and recurrent MYC amplification in ALK-translocated NSCLC: a central role of TP53 mutations, *J. Pathol.*, 2018, vol. 246, no. 1, pp. 67—76. doi 10.1002/path.5110
25. Jdey, W., Thierry, S., Popova, T., et al., Micronuclei frequency in tumors is a predictive biomarker for genetic instability and sensitivity to the DNA repair inhibitor AsiDNA, *Cancer Res.*, 2017, vol. 77, no. 16, pp. 4207—4216. doi 10.1158/0008-5472.CAN-16-2693
26. Venkatachalam, P., Solomon, F.D.P., Mohankumar, M.N., et al., Higher frequency of dicentrics and micronuclei in peripheral blood lymphocytes of cancer patients, *Mutat. Res.*, 1999, vol. 425, no. 1, pp. 1—8. doi 10.1016/s0027-5107(98)00238-3
27. Jagetia, G.C., Jayakrishnan, A., Fernandes, D., and Vidyasagar, M.S., Evaluation of micronuclei frequency in the cultured peripheral blood lymphocytes of cancer patients before and after radiation treatment, *Mutat. Res.*, 2001, vol. 491, nos. 1—2, pp. 9—16. doi 10.1016/s1383-5718(00)00132-7

28. Violot, D., M'Kacher, R., Adjadj, E., et al., Evidence of increased chromosomal abnormalities in French Polynesian thyroid cancer patients, *Eur. J. Nucleic Med. Mol. Imaging*, 2005, vol. 32, no. 2, pp. 174—179. doi 10.1007/s00259-004-1662-2
29. Yildirim, I.H., Yesilada, E., and Yologlu, S., Micronucleus frequency in peripheral blood lymphocytes and exfoliated buccal cells of untreated cancer patients, *Genetika*, 2006, vol. 42, no. 5, pp. 705—710.
30. Vodicka, P., Polivkova, Z., Sytarova, S., et al., Chromosomal damage in peripheral blood lymphocytes of newly diagnosed cancer patients and healthy controls, *Carcinogenesis*, 2010, vol. 31, no. 7, pp. 1238—1241. doi 10.1093/carcin/bgq056
31. Lloyd, S.M., Lopez, M., and El-Zein, R., Cytokinesis-blocked micronucleus cytome assay and spectral karyotyping as methods for identifying chromosome damage in a lung cancer case-control population, *Genes Chromosomes Cancer*, 2013, vol. 52, no. 7, pp. 694—707. doi 10.1002/gcc.22065
32. Bolognesi, C., Bruzzi, P., Gismondi, V., et al., Clinical application of micronucleus test: a case-control study on the prediction of breast cancer risk susceptibility, *PLoS One*, 2014, vol. 9, no. 11. e112354. doi 10.1371/journal.pone.0112354
33. Vodenkova, S., Polivkova, Z., Musak, L., et al., Structural chromosomal aberrations as potential risk markers in incident cancer patients, *Mutagenesis*, 2015, vol. 30, no. 4, pp. 557—563. doi 10.1093/mutage/gev018
34. Hagmar, L., Brøgger, A., Hansteen, I.L., et al., Cancer risk in humans predicted by increased levels of chromosomal aberrations in lymphocytes: Nordic study group on the health risk of chromosome damage, *Cancer Res.*, 1994, vol. 54, no. 11, pp. 2919—2922.
35. Fenech, M., Chromosomal biomarkers of genomic instability relevant to cancer, *Drug Discov. Today*, 2002, vol. 7, no. 22, pp. 1128—1137. doi 10.1016/s1359-6446(02)02502-3
36. Bonassi, S., Norppa, H., Ceppi, M., et al., Chromosomal aberration frequency in lymphocytes predicts the risk of cancer: results from a pooled cohort study of 22358 subjects in 11 countries, *Carcinogenesis*, 2008, vol. 29, no. 6, pp. 1178—1183. doi 10.1093/carcin/bgn075
37. Bonassi, S., El-Zein, R., Bolognesi, C., and Fenech, M., Micronuclei frequency in peripheral blood lymphocytes and cancer risk: evidence from human studies, *Mutagenesis*, 2011, vol. 26, no. 1, pp. 93—100. doi 10.1093/mutage/geq075
38. Iarmarcovai, G., Ceppi, M., Botta, A., et al., Micronuclei frequency in peripheral blood lymphocytes of cancer patients: a meta-analysis, *Mutat. Res.*, 2008, vol. 659, no. 3, pp. 274—283. doi 10.1016/j.mrrev.2008.05.006

39. Rossi, A., Hansteen, M.I., Skjelbred, C.F., et al., Association between frequency of chromosomal aberrations and cancer risk is not influenced by genetic polymorphisms in GSTM1 and GSTT1, *Environ. Health Perspect.*, 2009, vol. 117, no. 2, pp. 203—208. doi 10.1289/ehp.11769
40. Stewart, B.W. and Wild, C.P., *World Cancer Report*, Lyon: IARC, 2014.
41. Richard, C., Fumet, J.D., Chevrier, S., et al., Exome analysis reveals genomic markers associated with better efficacy of nivolumab in lung cancer patients, *Clin. Cancer Res.*, 2019, vol. 25, no. 3, pp. 957—966. doi 10.1158/1078-0432.CCR-18-1940
42. El-Zein, R.A., Abdel-Rahman, S., Santee, K.J., et al., Identification of small and non-small cell lung cancer markers in peripheral blood using cytokinesis-blocked micronucleus and spectral karyotyping assays, *Cytogenet. Genome Res.*, 2017, vol. 152, no. 3, pp. 122—131. doi 10.1159/000479809
43. El-Zein, R.A., Etzel, C.J., and Munden, R.F., The cytokinesis-blocked micronucleus assay as a novel biomarker for selection of lung cancer screening participants, *Transl. Lung Cancer Res.*, 2018, vol. 7, no. 3, pp. 336—346. doi 10.21037/tlcr.2018.05.09
44. Okamoto, T., Kohno, M., Ito, K., et al., Clinical significance of DNA damage response factors and chromosomal instability in primary lung adenocarcinoma, *Anticancer Res.*, 2017, vol. 37, no. 4, pp. 1729—1735. doi 10.21873/anticancer.11505
45. Huang, T., Li, J., Zhang, C., et al., Distinguishing lung adenocarcinoma from lung squamous cell carcinoma by two hypomethylated and three hypermethylated genes: a meta-analysis, *PLoS One*, 2016, vol. 11, no. 2. e0149088. doi 10.1371/journal.pone.0149088
46. Goldstraw, P., New staging system: how does it affect our practice? *J. Clin. Oncol.*, 2013, vol. 31, no. 8, pp. 984—991. doi 10.1200/JCO.2012.42.7922
47. Thriveni, K., Raju, A., Kumar, R.V., et al., Patterns of relative telomere length is associated with hTERT gene expression in the tissue of patients with breast cancer, *Clin. Breast Cancer*, 2019, vol. 19, no. 1, pp. 27—34. doi 10.1016/j.clbc.2018.07.021
48. Savage, J.R., Classification and relationships of induced chromosomal structural changes, *J. Med. Genet.*, 1976, vol. 13, no. 2, pp. 103—122.
49. Fenech, M., Cytokinesis-block micronucleus cytome assay, *Nat. Protoc.*, 2007, vol. 2, no. 5, pp. 1084—1104. doi 10.1038/nprot.2007.77
50. Ingel, F.I., Perspectives of micronuclear test in human lymphocytes cultivated in cytogenetic block conditions: 1. Cell proliferation, *Ekol. Genet.*, 2006, vol. 4, no. 3, pp. 7—19.

51. Shen, M., Cawthon, R., Rothman, N., et al., A prospective study of telomere length measured by monochrome multiplex quantitative PCR and risk of lung cancer, *Lung Cancer*, 2011, vol. 73, no. 2, pp. 33—37. doi 10.1016/j.lungcan.2010.11.009
52. Lan, Q., Cawthon, R., Gao, Y., et al., Longer telomere length in peripheral white blood cells is associated with risk of lung cancer and the rs2736100 (CLPTM1L-TERT) polymorphism in a prospective cohort study among women in China, *PLoS One*, 2013, vol. 8, no. 3. e59230. doi 10.1371/journal.pone.0059230
53. Han, J., Qureshi, A.A., Prescott, J., et al., A prospective study of telomere length and the risk of skin cancer, *J. Invest. Dermatol.*, 2009, vol. 129, no. 2, pp. 415—421. doi 10.1038/jid.2008.238
54. Fu, X., Wan, S., Hann, H.W., et al., Relative telomere length: a novel non-invasive biomarker for the risk of non-cirrhotic hepatocellular carcinoma in patients with chronic hepatitis B infection, *Eur. J. Cancer*, 2012, vol. 48, no. 7, pp. 1014—1022. doi 10.1016/j.ejca.2012.02.066
55. Gramatges, M.M., Telli, M.L., Balise, R., and Ford, J.M., Longer relative telomere length in blood from women with sporadic and familial breast cancer compared with healthy controls, *Cancer Epidemiol. Biomarkers Prev.*, 2010, vol. 19, no. 2, pp. 605—613. doi 10.1158/1055-9965.EPI-09-0896
56. Tomasetti, C. and Vogelstein, B., Cancer etiology: variation in cancer risk among tissues can be explained by the number of stem cell divisions, *Science*, 2015, vol. 347, no. 6217, pp. 78—81. doi 10.1126/science.1260825
57. Wu, S., Powers, S., Zhu, W., and Hannun, Y.A., Substantial contribution of extrinsic risk factors to cancer development, *Nature*, 2016, vol. 529, no. 7584, pp. 43—47. doi 10.1038/nature16166
58. Shain, A.H., Yeh, I., Kovalyshyn, I., et al., The genetic evolution of melanoma from precursor lesions, *N. Engl. J. Med.*, 2015, vol. 373, no. 20, pp. 1926—1936. doi 10.1056/NEJMoa1502583
59. Hanahan, D. and Weinberg, R.A., Hallmarks of cancer: the next generation, *Cell*, 2011, vol. 144, no. 5, pp. 646—674. doi 10.1016/j.cell.2011.02.013
60. Lou, J., He, J., Zheng, W., et al., Investigating the genetic instability in the peripheral lymphocytes of 36 untreated lung cancer patients with comet assay and micronucleus assay, *Mutat. Res.*, 2007, vol. 617, nos. 1—2, pp. 104—110. doi 10.1016/j.mrfmmm.2007.01.004
61. Peddireddy, V., Badabagni, S.P., Gundimeda, S.D., et al., Genetic instability in peripheral lymphocytes as biological marker for non-small cell lung cancer patients in the South Indian

state of Andhra Pradesh, *Int. J. Biol. Markers*, 2014, vol. 29, no. 4. e345-53. doi 10.5301/jbm.5000085

62. Minina, V.I., Sinitsky, M.Y., Druzhinin, V.G., et al., Chromosome aberrations in peripheral blood lymphocytes of lung cancer patients exposed to radon and air pollution, *Eur. J. Cancer Prev.*, 2018, vol. 27, no. 1, pp. 6—12. doi 10.1097/CEJ.0000000000000270. PMID: 27232209

63. Sansregret, L. and Swanton, C., The role of aneuploidy in cancer evolution., *Cold Spring Harbor Perspect. Med.*, 2017, vol. 7, no. 1. a028373. doi 10.1101/cshperspect.a028373

64. Simonetti, G., Bruno, S., Padella, A., et al., Aneuploidy: cancer strength or vulnerability? *Int. J. Cancer*, 2019, vol. 144, no. 1, pp. 8—25. doi 10.1002/ijc.31718

TABLES

Table 1. Characteristics of the studied groups

Indicators	LC patients, $n = 67$	Control, $n = 77$
Age (years) ($\mu \pm SE$) / min--max	59.64 \pm 9.38 / 22–73	59.49 \pm 6.61 / 43-79
Smoking status (%):		
smokers	61.2	52.0
nonsmokers	38.8	48.0
LC type* (%):		
squamous cell cancer	52.2	
adenocarcinoma	25.4	
small cell cancer	10.5	
other cancers	11.9	
TNM** (%):		
I, II	29.9	
III, IV	70.1	
Metastases – (%)	86.6	
Metastases + (%)	13.4	

*Pathomorphological diagnosis.

**LC stages according to the tumor–node–metastasis classification.

Table 2. Frequencies of chromosomal aberrations in leukocytes of lung cancer patients and control donors

Aberration type	Lung cancer (<i>n</i> = 67)		Control (<i>n</i> = 77)	
	$\mu \pm SE, \%$	min–max	$\mu \pm SE, \%$	min–max
Proportion of aberrant metaphases	$4,4 \pm 0,25^{**}$	0,5–9,5	$2,11 \pm 0,14$	0–5
Single fragments	$2,95 \pm 0,24^{**}$	0–8,5	$1,46 \pm 0,11$	0–3,5
Chromatid exchanges	$0,1 \pm 0,03^*$	0–0,5	$0,03 \pm 0,02$	0–1
Paired fragments	$1,1 \pm 0,14^{**}$	0–5,5	$0,46 \pm 0,06$	0–2,5
Chromosomal exchanges	$0,53 \pm 0,08^*$	0–4	$0,26 \pm 0,05$	0–2

* $p < 0.01$, ** $p < 0.0001$, differ from the value for the control group.

Table 3. Frequencies of micronuclei and other cytogenetic damages ($\mu \pm SD, \%$) in leukocytes of lung cancer patients and control donors

Group	Binucleated cells with MN			Binucleated cells with bridges	Binucleated cells with protrusions	Mononuclear cells with MN
	1 MN	2 MN	total MN			
Lung cancer	$1,31 \pm 0,1^{***}$	$0,14 \pm 0,02^*$	$1,49 \pm 0,11^{***}$	$0,2 \pm 0,02^{**}$	$1,77 \pm 0,14$	$0,33 \pm 0,05$
Control	$0,78 \pm 0,05$	$0,09 \pm 0,01$	$0,86 \pm 0,06$	$0,12 \pm 0,02$	$1,69 \pm 0,12$	$0,23 \pm 0,03$

* $p < 0.05$, ** $p < 0.01$, *** $p < 0.001$, differ from the value for the control group.

Table 4. Frequencies of centromere-positive (CEN+) and centromere-negative (CEN–) micronuclei ($\mu \pm SD, \%$) in leukocytes of lung cancer patients and control donors

Biomarker	Lung cancer (<i>n</i> = 38)			Control (<i>n</i> = 37)		
	MN +	MN –	total MN	MN +	MN –	total MN
Binucleated cells with MN	$0,83 \pm 0,08^*$	$0,61 \pm 0,04$	$1,43 \pm 0,1^*$	$0,32 \pm 0,03$	$0,58 \pm 0,05$	$0,87 \pm 0,07$

* $p = 0.00001$, differs from the value for the control group.

FIGURE CAPTIONS

Fig. 1. The results of measuring telomere length. $F = 20.24$; $p = 0.00001$.

Key:

Относительная длина теломер --> Relative telomere length;

Контроль --> Control;

Рак легких --> Lung cancer.

Fig. 2. The relationship of the telomere length to the frequency of chromosomal aberrations in leukocytes of lung cancer patients.

Key:

Относительная длина теломер --> Relative telomere length;

Аберрации хромосомного типа, % --> Chromosomal aberrations, %.

Fig. 3. The relationship of the telomere length to the frequency of paired fragments in leukocytes of lung cancer patients.

Key:

Относительная длина теломер --> Relative telomere length;

Парные фрагменты, % --> Paired fragments, %.

Fig. 4. The relationship of the telomere length to the frequency of nuclear protrusions in leukocytes of lung cancer patients.

Key:

Относительная длина теломер --> Relative telomere length;

Двухъядерные лейкоциты с протрузиями, % --> Binucleated leukocytes with protrusions, %.

Fig. 5. The relationship of the telomere length to the frequency of apoptosis in leukocytes of lung cancer patients.

Key:

Относительная длина теломер --> Relative telomere length;

Апоптоз, % --> Apoptosis, %.

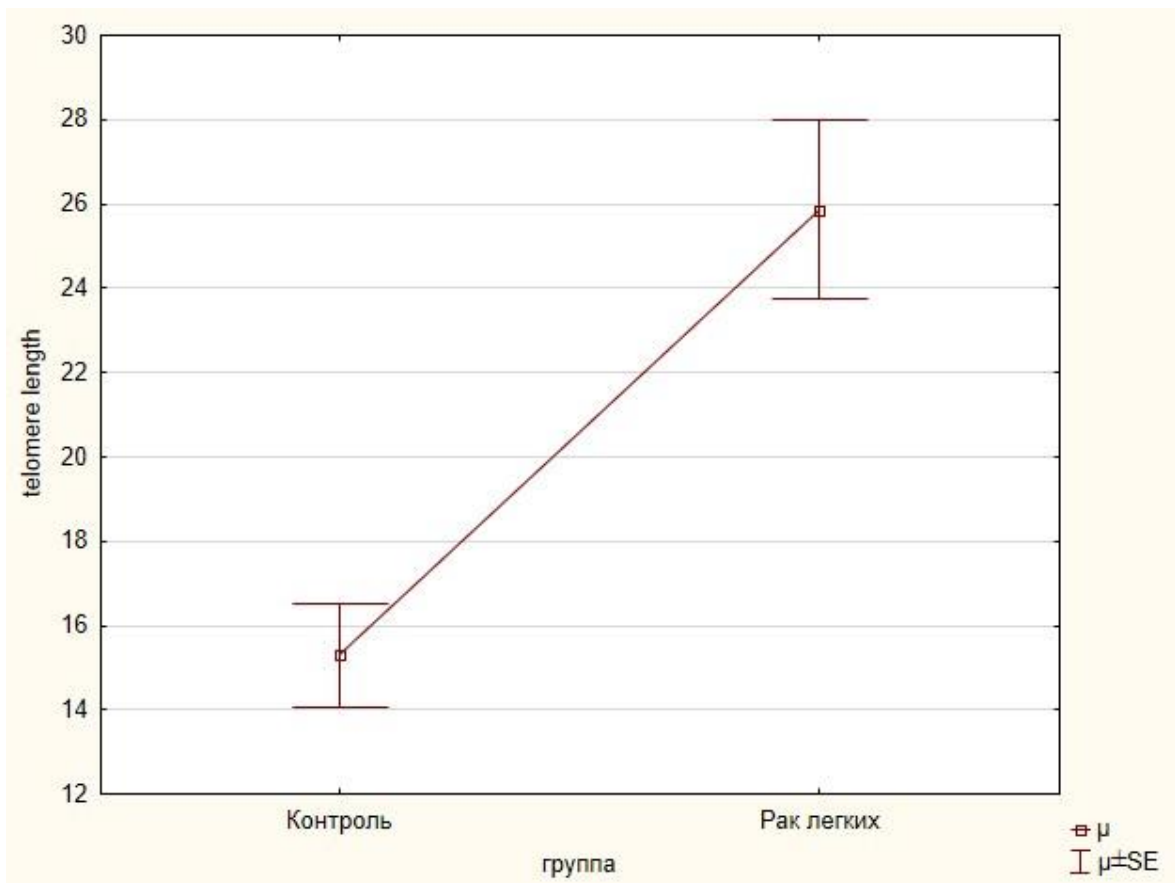


Fig. 1. The results of measuring telomere length. $F = 20.24$; $p = 0.00001$.

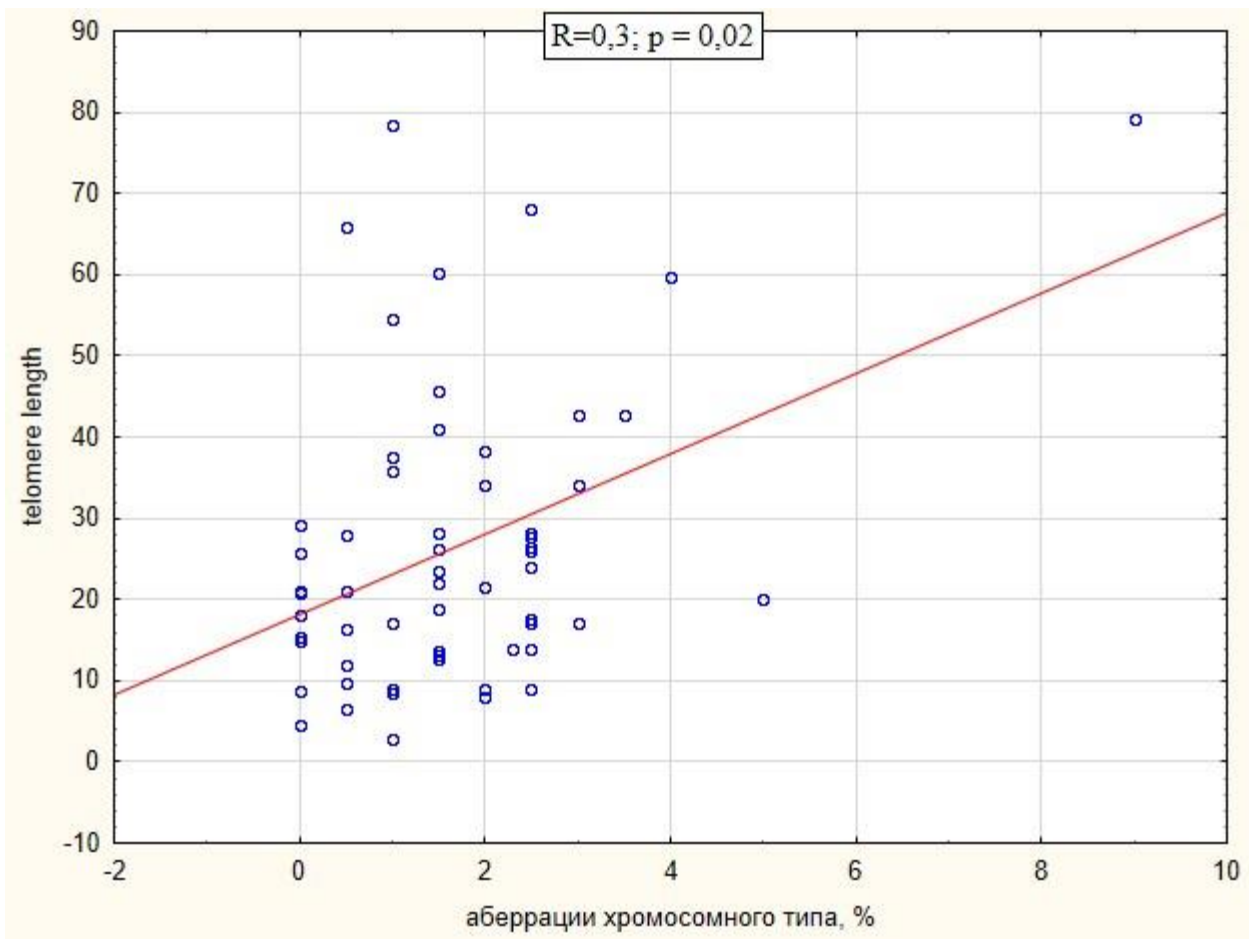


Fig. 2. The relationship of the telomere length to the frequency of chromosomal aberrations in leukocytes of lung cancer patients.

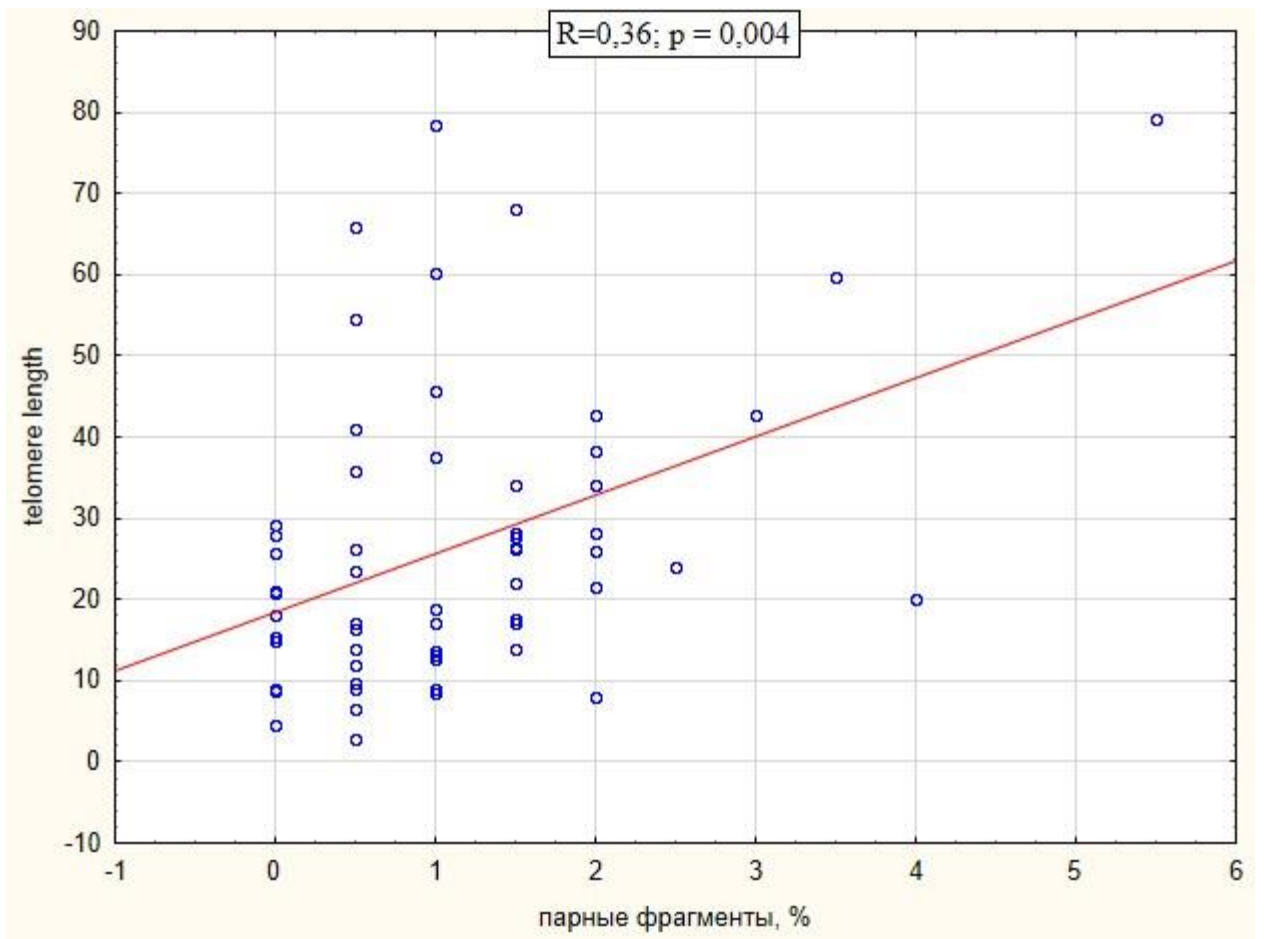


Fig. 3. The relationship of the telomere length to the frequency of paired fragments in leukocytes of lung cancer patients.

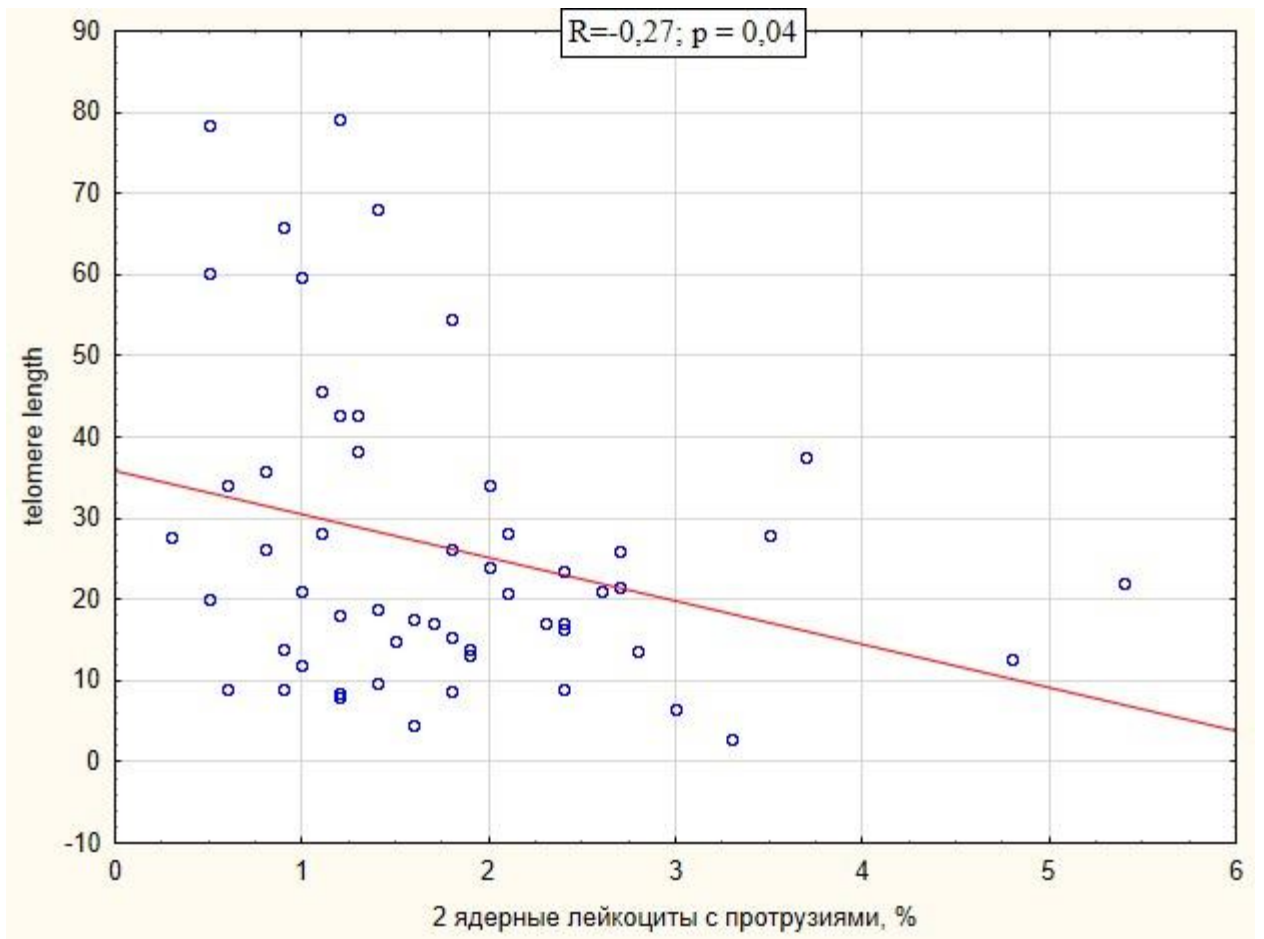


Fig. 4. The relationship of the telomere length to the frequency of nuclear protrusions in leukocytes of lung cancer patients.

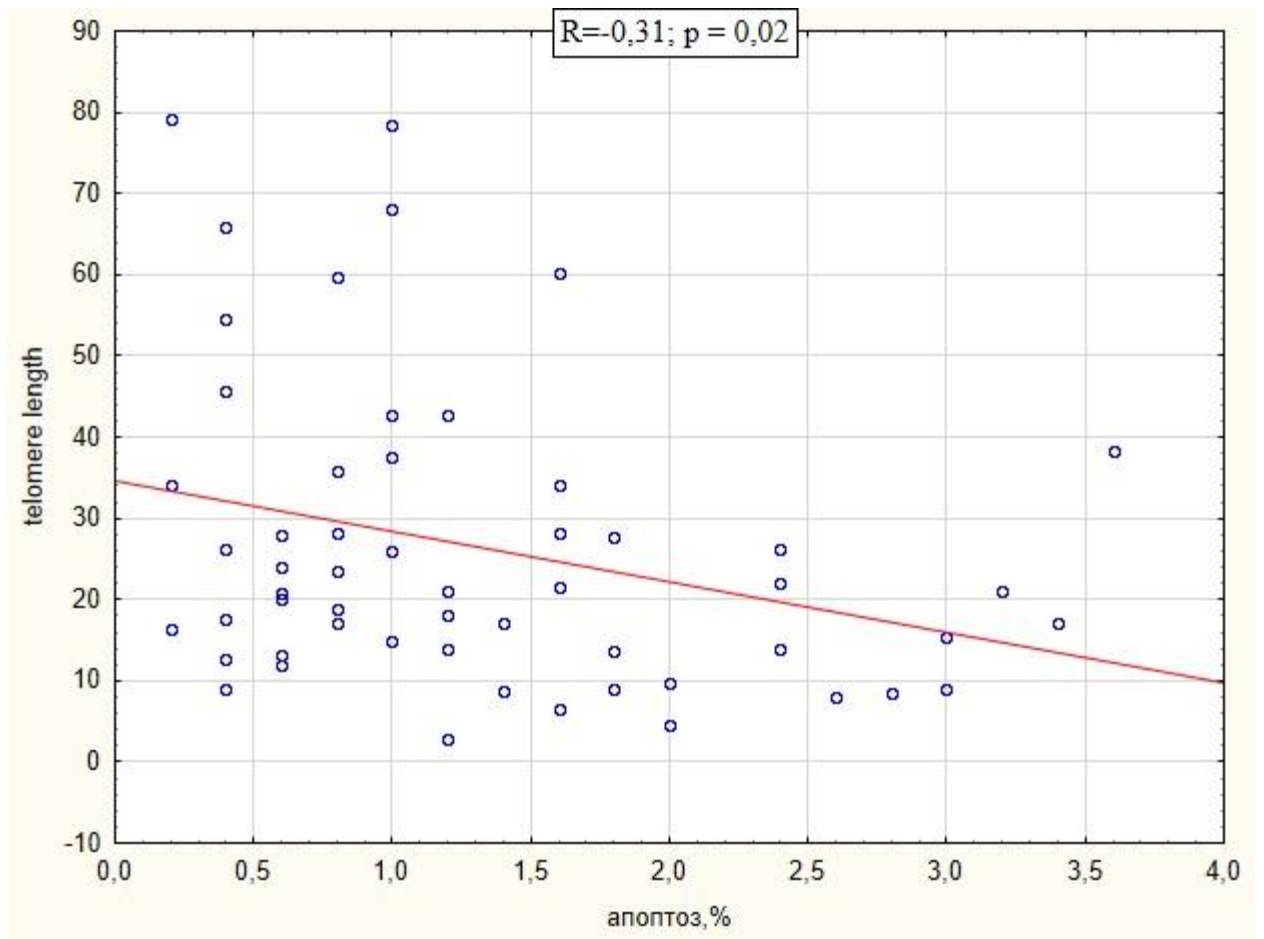


Fig. 5. The relationship of the telomere length to the frequency of apoptosis in leukocytes of lung cancer patients.