



HAL
open science

Fan/OGV broadband noise predictions using LES

Jean Al-Am, Vincent Clair, Alexis Giauque, Jérôme Boudet, Fernando Gea-Aguilera

► **To cite this version:**

Jean Al-Am, Vincent Clair, Alexis Giauque, Jérôme Boudet, Fernando Gea-Aguilera. Fan/OGV broadband noise predictions using LES. EuroHPC Summit Week 2022, Mar 2022, Paris, France. hal-03718436

HAL Id: hal-03718436

<https://hal.science/hal-03718436>

Submitted on 8 Jul 2022

HAL is a multi-disciplinary open access archive for the deposit and dissemination of scientific research documents, whether they are published or not. The documents may come from teaching and research institutions in France or abroad, or from public or private research centers.

L'archive ouverte pluridisciplinaire **HAL**, est destinée au dépôt et à la diffusion de documents scientifiques de niveau recherche, publiés ou non, émanant des établissements d'enseignement et de recherche français ou étrangers, des laboratoires publics ou privés.



EuroHPC
Joint Undertaking



EuroHPC Summit Week 2022

#PRACEdays



Fan/OGV broadband noise predictions using LES

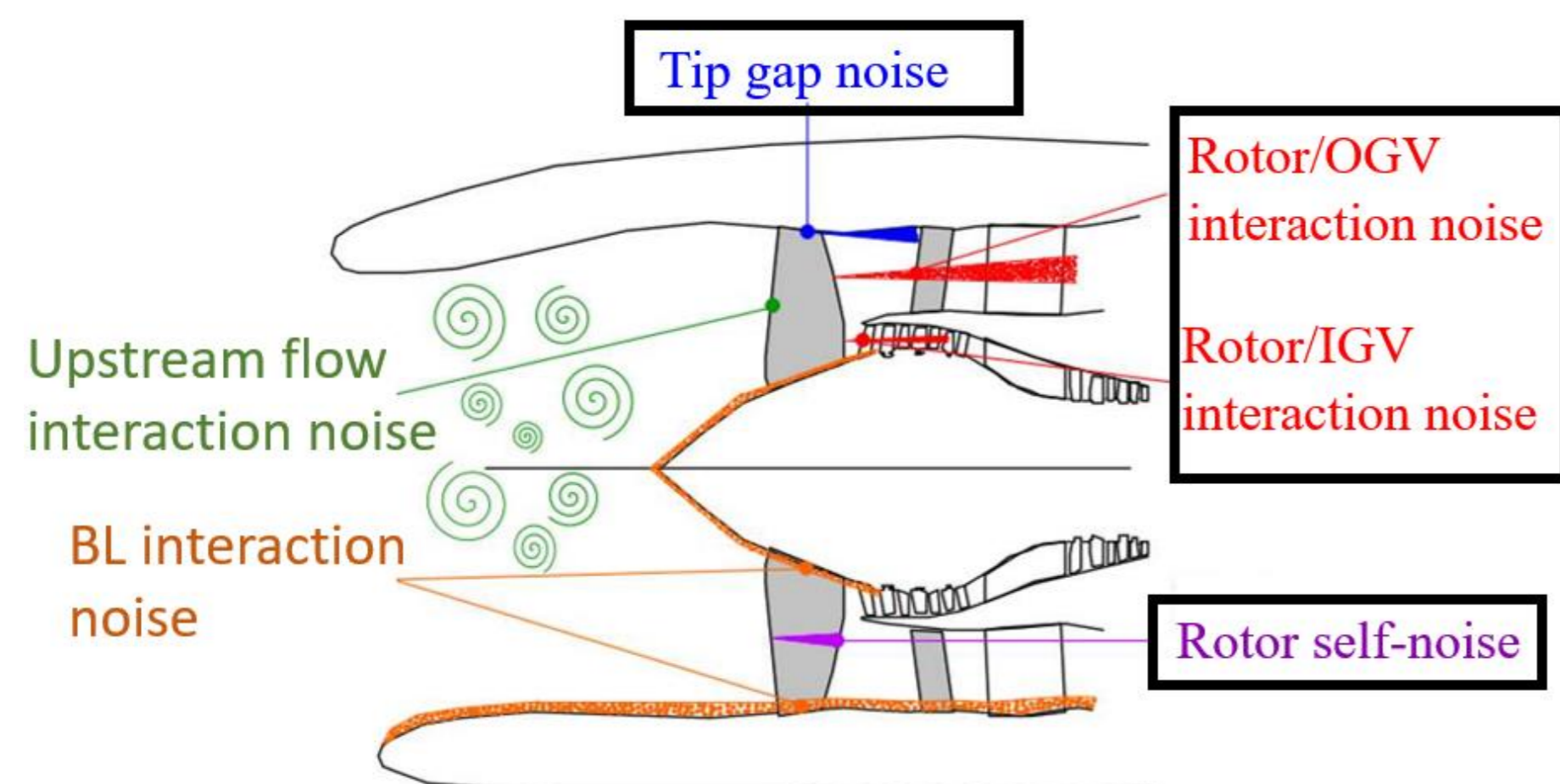
Jean Al-Am^(1,2), Vincent Clair⁽¹⁾, Alexis Giauque⁽¹⁾, Jérôme Boudet⁽¹⁾, Fernando Gea-Aguilera⁽²⁾

⁽¹⁾ Univ Lyon, École Centrale de Lyon, INSA Lyon, Université Claude Bernard Lyon I, CNRS, Laboratoire de Mécanique des Fluides et d'Acoustique, UMR 5509, 36 Avenue Guy de Collongue, F-69134, Ecully, France.

⁽²⁾ Safran Aircraft Engines, 77550 Moissy-Cramayel, France.

1. Introduction

- The fan stage of an aero-engine is a major contributor to the overall engine noise.
- At approach conditions, the broadband noise becomes a major contributor to the fan noise.

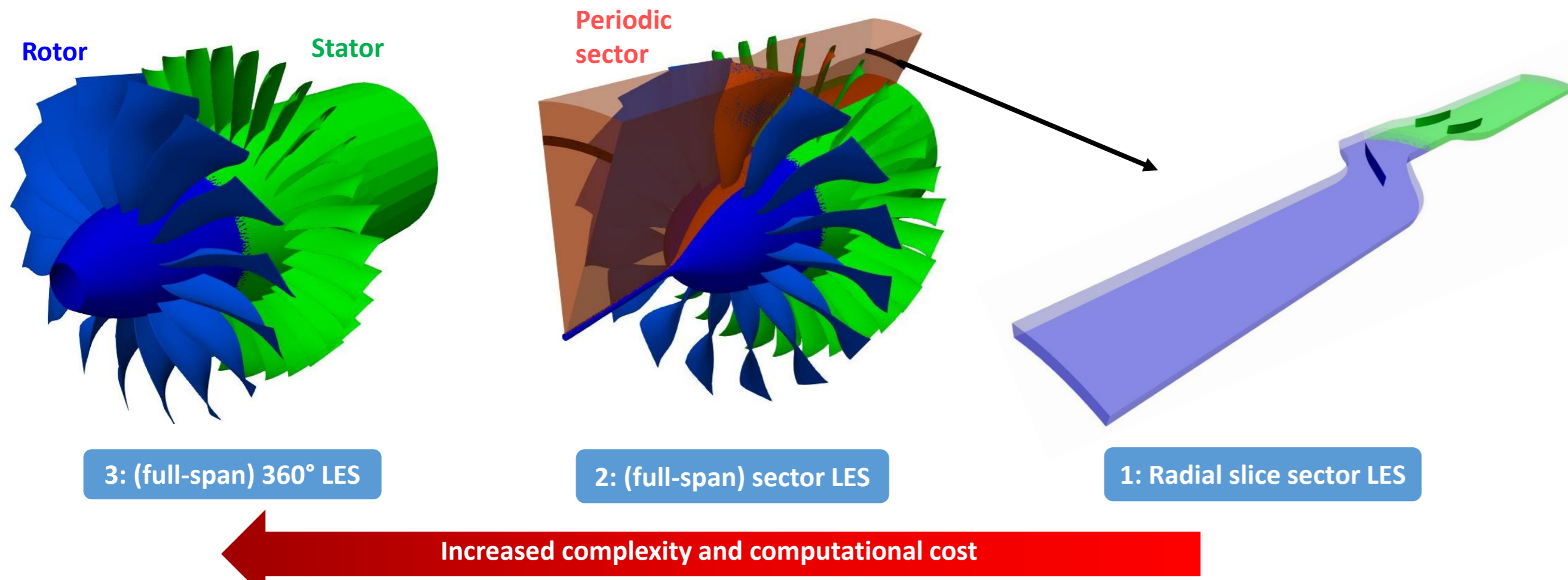


Objective

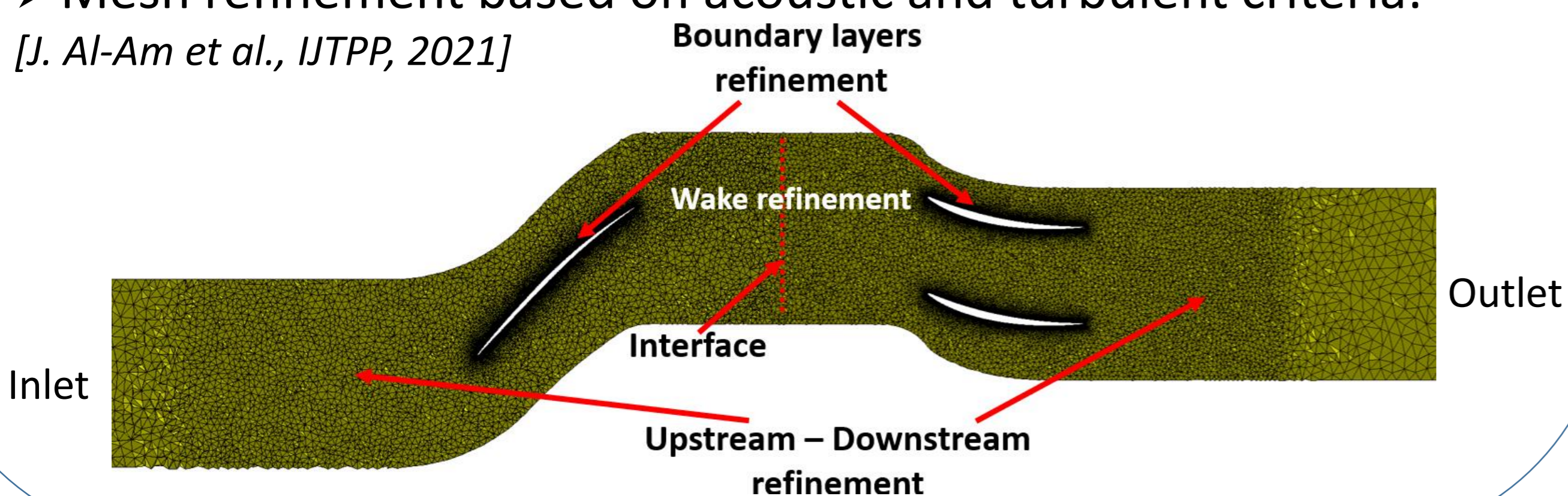
- Direct prediction of fan broadband noise using Large Eddy Simulations (LES).

2. LES setup

- Several configurations of the ECL fan stage at 55%Nn:

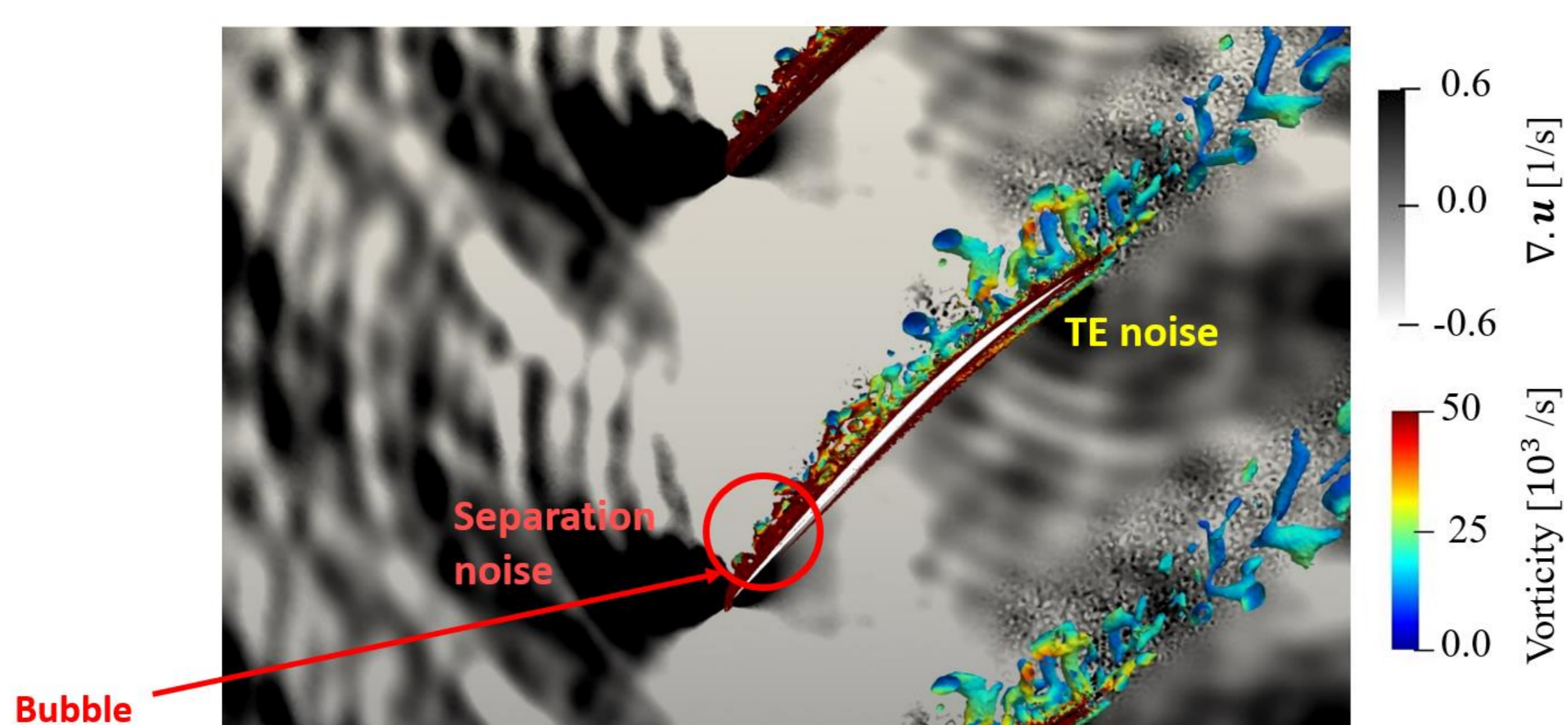


- Solver **AVBP**, numerical scheme: TTGC (3rd order).
- Mesh refinement based on acoustic and turbulent criteria: [J. Al-Am et al., IJTPP, 2021]



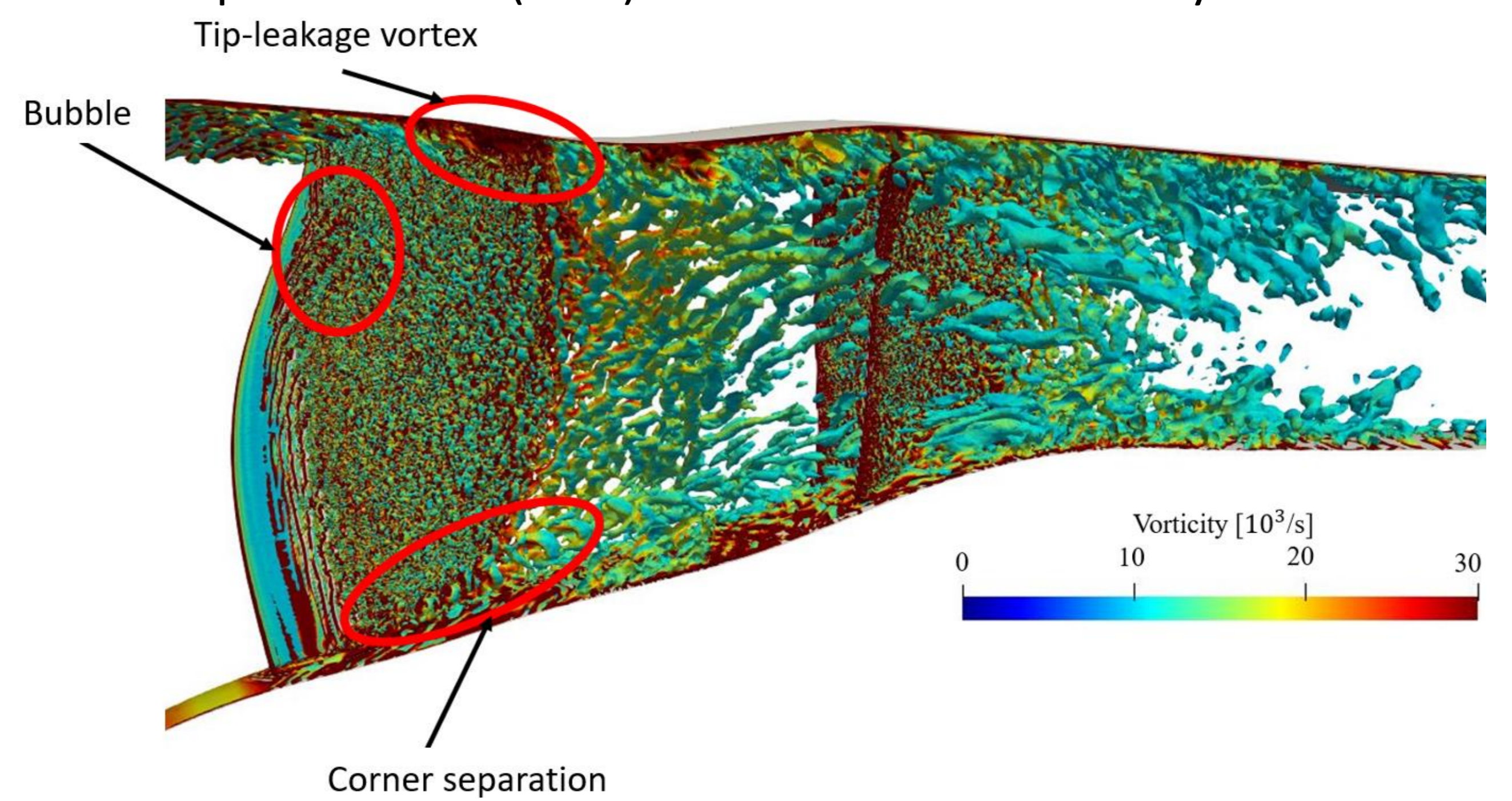
3. ECL5 - radial slice sector LES

- Two main noise sources: separation noise and trailing edge noise.
- High frequency tones related to fluctuations in the bubble region.



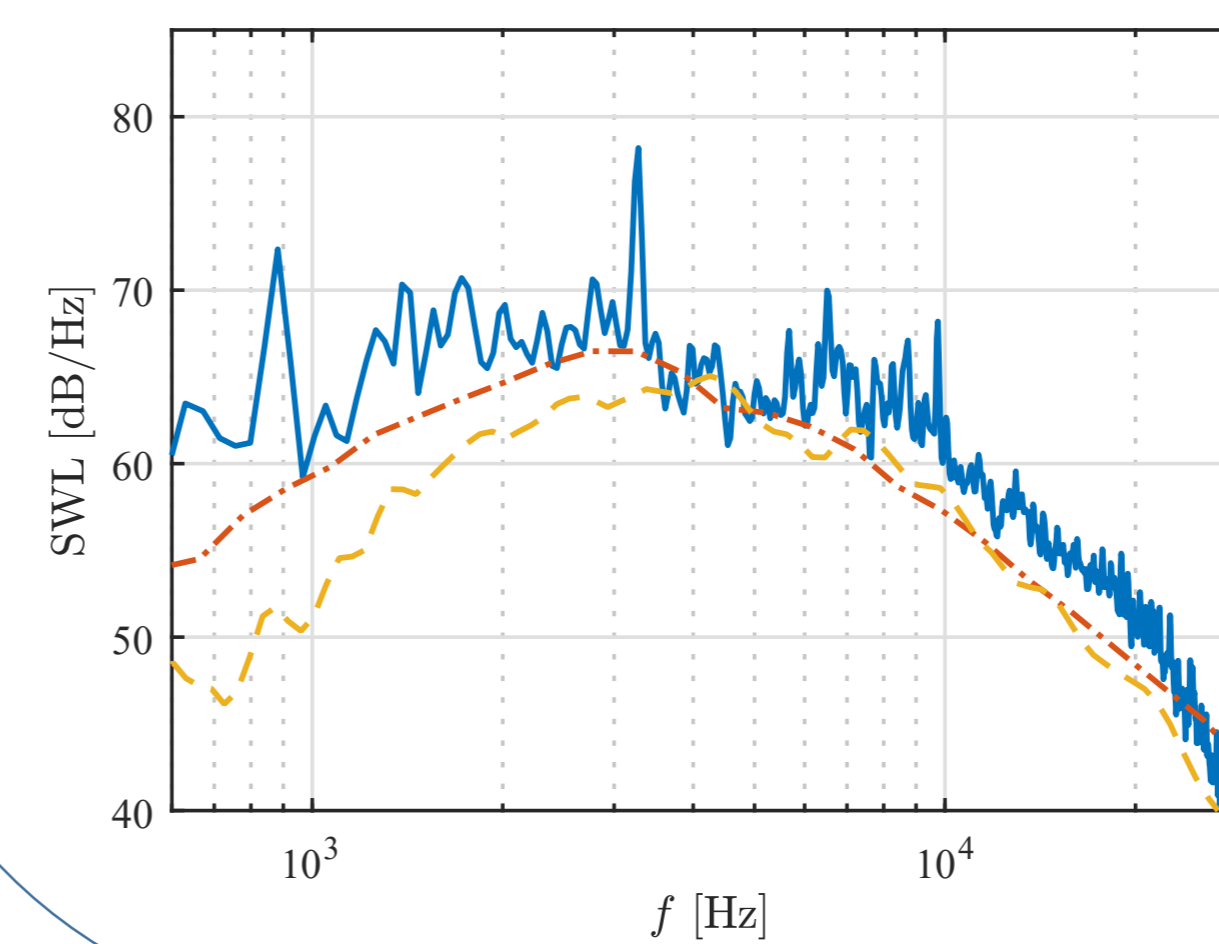
4. ECL5 – (full span) sector LES

- Turbulent structures and noise mechanisms.
- Sound power levels (SWL) from direct LES and analytical models.

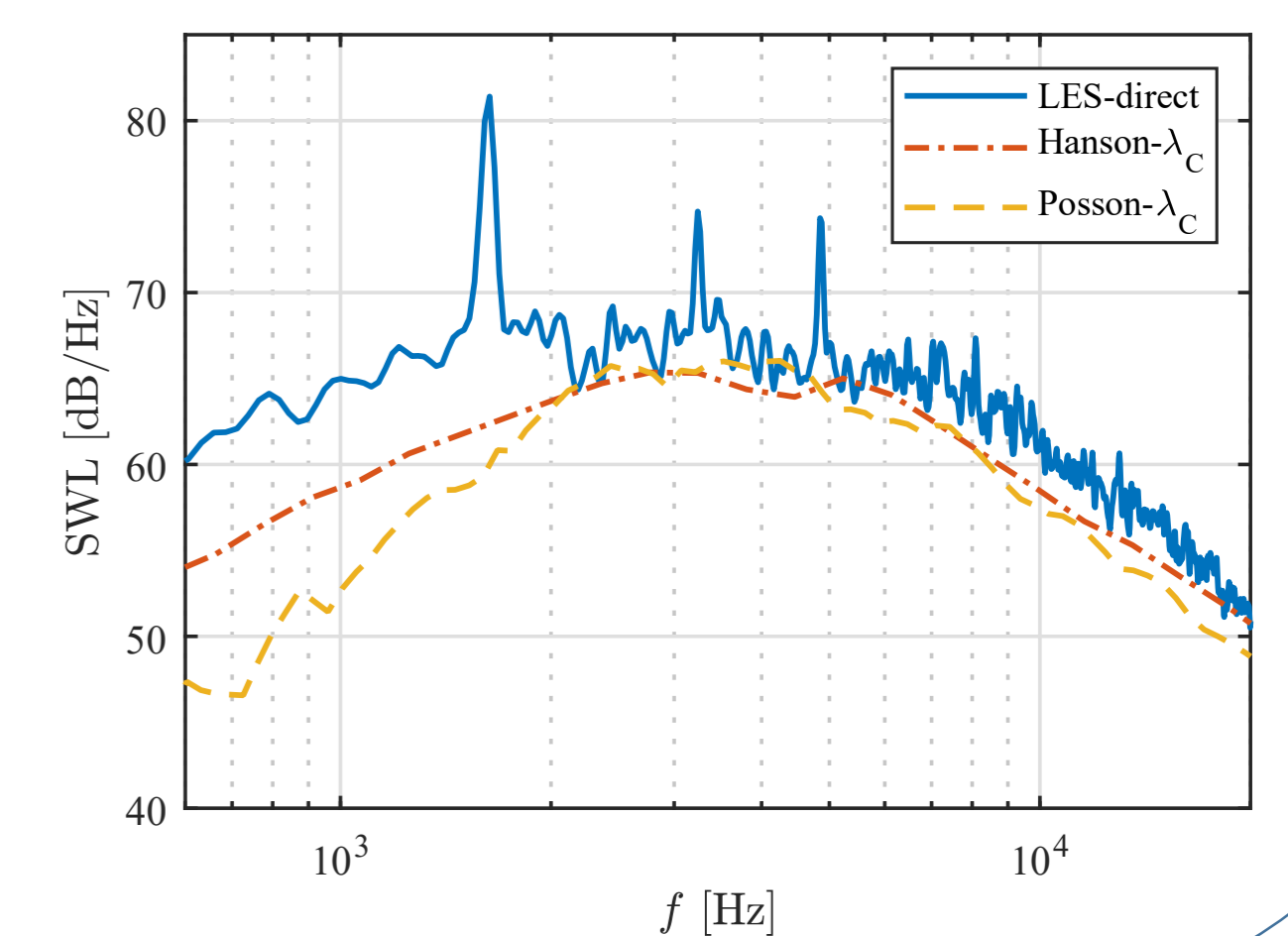


Turbulence interaction noise

Intake section



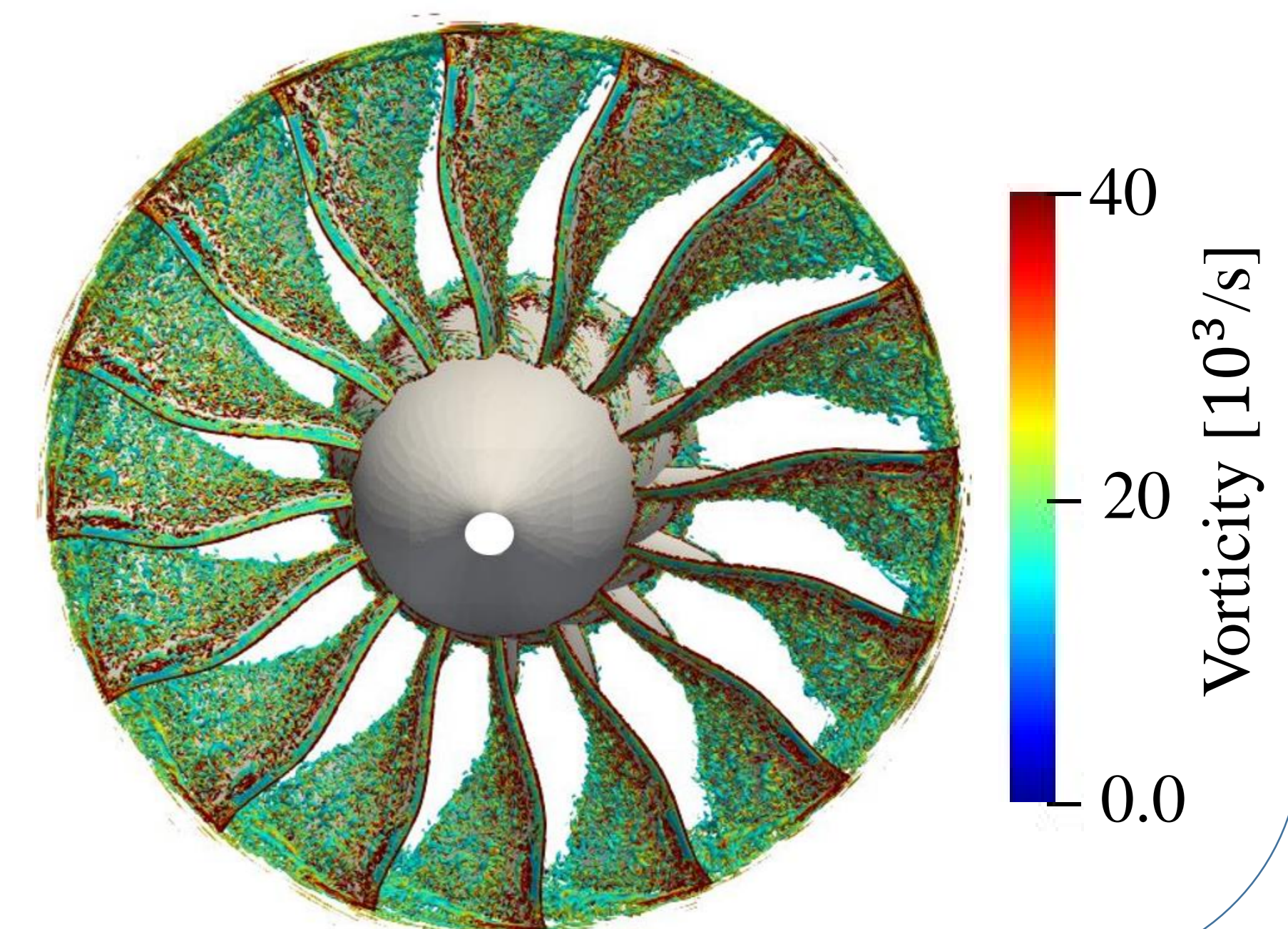
Exhaust section



5. ECL5 – (full span) 360° LES

- A full 360° configuration allows us to:
 - Predict all the cut-on propagating modes.
 - Describe properly the correlation of the blade-to-blade unsteady loads.

| | |
|--------------|-------------------|
| Nb. cells | 1.5×10^9 |
| Procs | 15360 |
| CPUh (PRACE) | 30×10^6 |



6. Conclusions and perspectives

- ✓ Fan stage noise predictions using LES and analytical models.
- ✓ Analysis of the different noise mechanisms.
- 💡 Convergence of the (full span) 360° LES.
- 💡 Comparison between the different LES configurations.

7. Acknowledgements

- Funding: ARENA chair (ANR-11-LABX-0060/ ANR-16-IDEX-0005).
- Computational resources: GENCI (CINES), FLMSN-PMCS21.

