



# Assessing spatiotemporal variation in abundance: A flexible framework accounting for sampling bias with an application to common pochard ( *Aythya ferina* )

Benjamin Folliot, Alain Caizergues, Adrien Tableau, Guillaume Souchay,  
Matthieu Guillemain, Jocelyn Champagnon, Clément Calenge

## ► To cite this version:

Benjamin Folliot, Alain Caizergues, Adrien Tableau, Guillaume Souchay, Matthieu Guillemain, et al.. Assessing spatiotemporal variation in abundance: A flexible framework accounting for sampling bias with an application to common pochard ( *Aythya ferina* ). Ecology and Evolution, 2022, 12 (4), 10.1002/ece3.8835 . hal-03715725

**HAL Id: hal-03715725**

**<https://hal.science/hal-03715725>**

Submitted on 13 Feb 2023

**HAL** is a multi-disciplinary open access archive for the deposit and dissemination of scientific research documents, whether they are published or not. The documents may come from teaching and research institutions in France or abroad, or from public or private research centers.

L'archive ouverte pluridisciplinaire **HAL**, est destinée au dépôt et à la diffusion de documents scientifiques de niveau recherche, publiés ou non, émanant des établissements d'enseignement et de recherche français ou étrangers, des laboratoires publics ou privés.

## RESEARCH ARTICLE

# Assessing spatiotemporal variation in abundance: A flexible framework accounting for sampling bias with an application to common pochard (*Aythya ferina*)

Benjamin Folliot<sup>1,2</sup>  | Alain Caizergues<sup>1</sup> | Adrien Tableau<sup>1</sup> | Guillaume Souchay<sup>1</sup>  |  
Matthieu Guillemain<sup>3</sup> | Jocelyn Champagnon<sup>4</sup> | Clément Calenge<sup>5</sup>

<sup>1</sup>Office Français de la Biodiversité,  
Direction de la Recherche et de l'Appui  
Scientifique, Nantes, France

<sup>2</sup>DYNECO - Laboratoire d'écologie  
benthique, Ifremer, Centre de Bretagne, ZI  
de la Pointe du Diable, Plouzané, France

<sup>3</sup>Office Français de la Biodiversité,  
Direction de la Recherche et de l'Appui  
Scientifique, Arles, France

<sup>4</sup>Tour du Valat, Research Institute for the  
Conservation of Mediterranean Wetlands,  
Arles, France

<sup>5</sup>Office Français de la Biodiversité,  
Direction Surveillance, Evaluation,  
Données - Unité données et appui  
méthodologique, Saint Benoist, France

## Correspondence

Benjamin Folliot, Office Français de la  
Biodiversité, Direction de la Recherche  
et de l'Appui Scientifique, Parc d'Affaires  
La Rivière, 8 Boulevard Albert Einstein,  
Nantes 44300, France.  
Email: [benjamin.folliot@gmail.com](mailto:benjamin.folliot@gmail.com)

## Abstract

Assessing trends in the relative abundance of populations is a key yet complex issue for management and conservation. This is a major aim of many large-scale censusing schemes such as the International Waterbird Count (IWC). However, owing to the lack of sampling strategy and standardization, such schemes likely suffer from biases due to spatial heterogeneity in sampling effort. Despite huge improvements of the statistical tools that allow tackling these statistical issues (e.g., GLMM, Bayesian inference), many conservationists still prefer to rely on stand-alone turn-key statistical tools, often violating the prerequisites put forward by the developers of these tools. Here, we propose a straightforward and flexible approach to tackle the typical statistical issues one can encounter when analyzing count data of monitoring schemes such as the IWC. We rely on IWC counts of the declining common pochard populations of the Northwest European flyway as a case study (period 2002–2012). To standardize the size of sampling units and mitigate spatial autocorrelation, we grouped sampling sites using a 75 × 75 km grid cells overlaid over the flyway of interest. Then, we used a hierarchical modeling approach, assessing population trends with random effects at two spatial scales (grid cells, and sites within grid cells) in order to derive spatialized values and to compute the average population trend at the whole flyway scale. Our approach allowed to tackle many statistical issues inherent to this type of analysis but often neglected, including spatial autocorrelation. Concerning the case study, our main findings are that: (1) the northwestern population of common pochards experienced a steep decline (4.9% per year over the 2002–2012 period); (2) the decline was more pronounced at high than low latitude (11.6% and 0.5% per year at 60° and 46° of latitude, respectively); and, (3) the decline was independent of the initial number of individuals in a given site (random across sites). Beyond the case study of the common pochard, our study provides a conceptual statistical framework for estimating and assessing potential drivers of population trends at various spatial scales.

This is an open access article under the terms of the Creative Commons Attribution License, which permits use, distribution and reproduction in any medium, provided the original work is properly cited.

© 2022 The Authors. *Ecology and Evolution* published by John Wiley & Sons Ltd.

## KEYWORDS

common pochard, ducks, hierarchical modeling, population trends, sampling bias, spatial autocorrelation

## TAXONOMY CLASSIFICATION

Spatial ecology

## 1 | INTRODUCTION

Wildlife populations are often distributed over huge areas, especially in migratory species (e.g., common pochards occupy continental flyways, Folliot et al., 2018), making difficult the implementation of reliable strategies for assessing their abundance and temporal trends (Jarman et al., 1996). Counting migratory birds, whose distribution often encompasses whole continents, requires the coordination of censuses and surveys over numerous entities (states, provinces, and countries) not necessarily sharing the same management priorities or conservation status for the same species. Nevertheless, the monitoring of migratory birds has a long tradition of coordinated “transnational” population censuses (Amano et al., 2018; Gregory et al., 2007; Lehikoinen et al., 2013; Sayoud et al., 2016). For example, Wetlands International coordinates the International Waterbird Census (IWC) over more than 100 countries around the world since 1967 (Amano et al., 2018). In the Palearctic region, the management of Anatidae species is conducted at the flyway level based on the IWC (censuses performed around January 15, Elmerg et al., 2006). These counts, together with censuses performed during the breeding season, serve to establish the International Union for Conservation of Nature (IUCN)’s red lists (IUCN, 2020), and implement management actions. In Western Europe, the red list status of harvested species helps implementing hunting policies by member countries of such agreements as the African–Eurasian Waterbird Agreement (AEWA).

Large-scale censuses and surveys also serve scientific purposes. The internationally coordinated censuses, such as IWC, the Mid-Winter Survey, or the Christmas Bird Count (MWS or CBC respectively, its North American counterparts) and the Pan-European Common Bird Monitoring Scheme (PECBMS), have recently been used to assess the efficiency of conservation policies (Amano et al., 2018; Gaget et al., 2020; Jørgensen et al., 2016), birds’ response to climate change (Lehikoinen et al., 2013; Meehan et al., 2021; Pavón-Jordán et al., 2019), or both (Gaget et al., 2018).

Unfortunately, international bird censuses, as those carried out in the Palearctic area, potentially suffer weaknesses that should be addressed adequately in the analyses. The methods required to model the population size from the censuses data depend on the type of collected data. In most large-scale monitoring, models used to infer population relative abundance rely on the assumption that the population abundance estimated in a site can be used to infer the abundance in the surrounding area. For example, most models of the CBC data suppose that the counted numbers of birds in all sites in a given region (“stratum”) are similar enough to allow the inference of an average relative abundance for the region (Soykan et al., 2016). Models

of North American Breeding Bird Survey (BBS) rely on a similar assumption, with all the routes belonging to a given region used to estimate the average relative abundance of the birds in this region (Link & Sauer, 1998; Sauer & Link, 2011). This similarity of bird abundances on routes close to each other is often more explicitly accounted for using spatial models (Bled et al., 2013; Thogmartin et al., 2004).

However, considering waterbirds, we cannot expect that bird abundances are similar in close locations: the number of ducks is likely to be very different on a small pond and on the neighboring lake. Therefore, a model of censuses cannot suppose that the abundance of water birds on a given water point is similar to the abundance on water points of the surrounding region, precluding the use of classical regression models such as those developed for BBS or CBC. On the other hand, even if adjacent entities are not characterized by similar bird abundances, they may potentially be sharing the same demographic characteristics, in particular population trends (Knape & de Valpine, 2012). This suggests that a modeling approach allowing to infer average population trends in regions without attempting to estimate the population abundance might be useful for such species.

When the IWC scheme was implemented, each country was asked to maximize the inferential potential of their monitoring efforts by focusing on more abundant sites to allow for more accurate estimation of populations trends, but no other sampling strategy was proposed to help achieving these goals (Delany, 2010). Therefore, censuses schemes were initially designed to be easily implemented at large scale to involve as many countries/territories as possible and almost entirely lacked a real sampling strategy. As a result, the managers in charge of the counts tended to prefer biodiversity hotspots for monitoring. Sampled sites may differ in size, densities of individuals, observation pressure, skill of observers, census methods, and so on, yet these differences are most of the time completely ignored in the analyses. As a consequence, overdispersion often “plague” the datasets and may seriously affect both estimate values and variable selection. Indeed, unaccounted overdispersion leads to an overestimated precision of estimates, and thereby to an inflated type I error rate (e.g., a random between-year variation in the estimated population size considered as a significant change in actual population size, or an environmental variable wrongly considered as having a significant effect on the population size; Cameron & Trivedi, 1998, chap. 3). For this reason, most authors include overdispersion residuals in their models of census data (Link & Sauer, 1998; Sauer & Link, 2011) or use statistical distributions other than Poisson (e.g., quasi-Poisson approaches, Pannekoek & van Strien, 2001). Finally, some data may be missing (Komdeur et al., 1992) leading to some difficulties in the inference of the population size and trends.

In summary, the lack of sampling strategy and standardization over time and space, together with the other problems mentioned above, may lead to important biases that should be considered in the analyses of wildlife census data. To date, the assessment of population trends often relies on a “standalone turn-key solution” (usually TRIM software, Lehtikoinen et al., 2013; Musil et al., 2011; Musilová et al., 2018), which has proven invaluable but suffers from drawbacks (Amano et al., 2018 or Meehan et al., 2021). TRIM tackles overdispersion but does not allow accounting for the problem of spatial autocorrelation in the population trends. However, most TRIM users, so far, simply ignored spatial autocorrelation together with the possibility to tackle overdispersion, meaning that in numerous instances the models did not fit the data. Trying to circumvent this last problem, some authors opted for a “last resort” solution consisting in performing analyses on log-transformed counts in a normal distribution framework (Pavón-Jordán et al., 2020), a strategy generally resulting in biased estimates when the count data include many zeroes (O'Hara & Kotze, 2010).

Here, we present a flexible statistical approach aimed at providing unbiased estimates of temporal trends in numbers derived from censuses collected in different countries and hence, potentially suffering the same biases as discussed above. We use the IWC data of common pochard (*Aythya ferina* – hereafter pochard) in the Northwestern European flyway as a case study. This diving duck is considered to have experienced a sharp decline over most of its range including the focal flyway (mean annual declines of  $-5.97\%$  and  $-2.16\%$  in the Northwestern and Central European Flyways, respectively, as estimated with TRIM, 2003–2012, Nagy et al., 2014). Such unfavorable status has caused the species to be upgraded from Least Concern (LC) to Vulnerable (VU) on the European and global IUCN Red Lists in 2015 (BirdLife International, 2015), and demographic studies to be initiated (Caizergues et al., 2016; Folliot et al., 2017, 2018, 2020; Gourlay-Larour et al., 2012, 2013, 2014; Keller, 2009).

The aims of the study were as follows: (1) to exemplify how biased a typical IWC dataset can be, (2) to develop a hierarchical modeling framework that adequately considers overdispersion and spatial autocorrelation in relative abundance trends, and (3) to assess within this framework the trends of pochard populations in Northwestern Europe, taking into account possible differences between the different parts of the wintering range in this area. We selected the IWC's pochard dataset as a case study both because it included the typical biases of interest mentioned above, and because these biases potentially plague many waterbird count datasets including those of IWC.

## 2 | MATERIALS AND METHODS

The pochard is a hunted diving duck whose distribution encompasses the Palearctic region (i.e., Western Eurasia and North Africa), mostly above  $40^\circ$  of latitude (Folliot et al., 2018; Fox et al., 2016). We focused on pochard populations of the Northwestern European flyway. For the sake of simplicity (to avoid tackling, e.g., threshold effects often characterizing long-term count time series) and

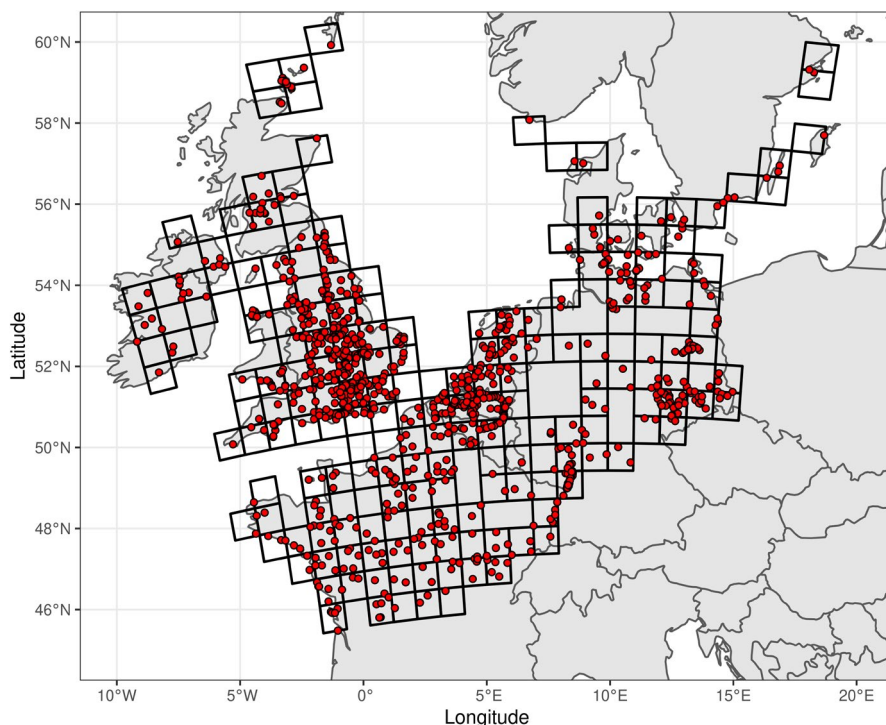
comparison with previous estimates, we focused on the January IWC counts of the 2002–2012 decade. During this period, the dataset covered 3273 sites counted at least once. Since it is difficult to assess the long-term trend of population size on a site using only a few counts, we focused our modeling approach on those sites counted at least 60% of the time (7 times) during the study period, representing a total of 981 sites (Figure 1).

### 2.1 | Assessing the nature of the problem

Before designing the statistical approach for the assessment of the population trend, we first fitted a preliminary simple Poisson generalized linear mixed model of the number of pochards on a site during a given year as a linear function of the year. This model included a site-specific intercept and a random effect of the site on the slope of the year. Indeed, while the slopes of  $N$  sites can be considered as  $N$  noisy measurements of an average trend, the intercepts (average number of individuals) may display consistent differences between sites due to, for example, differences in site size area. This model also included overdispersion residuals, and was fitted using the package TMB for the R software (a package that accommodate both large volume of data and large number of parameters, Kristensen et al., 2016). This analysis revealed that this period was characterized by a steep linear decline in the number of individuals counted (mean slope equal to  $-0.04$ , SE = 0.005; although this SE probably overestimates the precision of the slope, as it does not account for the spatial autocorrelation in the trends, see below). We assessed the spatial autocorrelation of the estimates of regression slopes estimated for each site with a Moran test (Cliff & Ord, 1981) based on a relative neighborhood graph (Toussaint, 1980, spdep package – Bivand et al., 2015). Moran's test detected highly significant but weakly positive spatial autocorrelation (Moran statistic  $I = 0.08$ ,  $p = .006$ ), meaning that neighboring sites tended to display similar temporal trends. A map showing the distribution of the sampled sites suggests that this spatial autocorrelation was due to the spatial heterogeneity of sampling effort, with some areas being oversampled (Figure 1). In some areas, the distance between neighboring sampling sites was in some cases lower than 100 m, leading to a high probability that the same groups of birds were counted on neighboring sites. Not accounting for this unequal sampling intensity would lead to a disproportionate weight of oversampled areas in the analysis, leading to overall trend estimates strongly affected by the local trends observed in these areas.

### 2.2 | Using a grid to ensure the standardization of sampling units

We designed a hierarchical modeling approach to account for spatial autocorrelation and non-random site selection (sampling heterogeneity). To ensure the reproducibility of the analyses carried out in this study, we included all the code and data used for this modeling approach in the R package pochardTrend (Digital



**FIGURE 1** Spatial distribution of the 981 sites surveyed at least 7 years between 2002 and 2012 (red circles) located in the northwestern flyway with the juxtaposition of 193 grid cells (75 × 75 km) when at least one site surveyed is present for the monitoring of the common pochard (*Aythya ferina*)

Object Identifier: <https://doi.org/10.5281/zenodo.5710550> on GitHub at the following URL: <https://github.com/ClementCalenge/pochardTrend>. The reader can install this package in R with the package devtools (Wickham et al., 2021), using the function `devtools::install_github("ClementCalenge/pochardTrend", ref="main")`. The `pochardTrend` package includes a vignette describing how the user can easily reproduce the model fit (available with the command `vignette("pochardTrend")`, once the package has been installed). We wrote this vignette to provide the user with the essential information on the model. This vignette also describes the model checks and residual analysis carried out for the obtained model (see below).

To account for spatial sampling heterogeneity, we “standardized” the size of sampling areas using a grid made of 193 (75 × 75 km) grid cells encompassing the flyway of interest (Figure 1). Each grid cell included at least 1 of the 981 sites retained in the analyses (see above). We opted for such a spatial resolution because it offered the best compromise between a low resolution and an overly high one that would have included non-sampled territories (grid cells). Therefore, each “sampling unit” covered a standard area and all the sampling units had the same weight in the analysis. Shifting from a set of sampled points with an irregular geographical repartition to a lattice process is a common strategy to standardize the area sampling unit and give them the same weight in the analysis (Bled et al., 2013).

### 2.3 | Structure of the hierarchical model

A major aim of our study was to develop a hierarchical model for estimating population trends from IWC-like data. We therefore fitted a model of the form:

$$N_{it} \sim \text{Poisson}(\lambda_{it}) \quad (1)$$

Where  $N_{it}$  is the number of individuals detected in site  $i$  during year  $t$ . We described these numbers using a Poisson distribution with mean  $\lambda_{it}$ , supposing the following model for this parameter:

$$\log(\lambda_{it}) = \alpha_i + (\beta_0 + d_i) \cdot t + e_{it} \quad (2)$$

$e_{it}$  is a Gaussian residual characterizing site  $i$  and year  $t$  (with mean 0 and standard deviation  $\sigma_e$ ) included in the model to account for overdispersion;  $\alpha_i$  is the intercept of the model for site  $i$  (Pannekoek & Van Strien, 2001; Sauer & Link, 2011), the slope of the year  $t$  is the sum of a fixed slope  $\beta_0$ , and a random site effect  $d_i$  modeled using a Gaussian distribution with a mean  $b_{q(i)}$  characterizing grid cell  $q(i)$  containing the site  $i$  and a standard deviation equal to  $\sigma_d$ :

$$d_i \sim \text{Normal}(b_{q(i)}, \sigma_d) \quad (3)$$

Note that if we calculate the sum  $\beta_0 + b_{q(i)}$ , the resulting value is the slope of the relationship between the log-mean number of animals in grid cell  $q(i)$  and the year. The parameter  $b_{q(i)}$  is itself modeled by a Gaussian distribution:

$$b_{q(i)} \sim \text{Normal}(\gamma \cdot L_{q(i)}, \sigma_b) \quad (4)$$

where  $\gamma$  is the slope of the latitude  $L_{q(i)}$  of the grid cell  $q(i)$  containing the site  $i$  and  $\sigma_b$  is the standard deviation of this Gaussian distribution.

Here, we modeled the trend as a function of the latitude only, but it would in theory be possible to model the slope as a function of other environmental variables (e.g., land cover change). We focused on the latitude to assess possible differences in trends over the species' range on a North–South axis due to migratory short stopping (shortening of migration distance leading to increasing numbers at high latitudes and decreasing numbers at low latitudes) in response



to increasing winter temperatures (Elmberg et al., 2014; Tománková et al., 2013).

To summarize, this hierarchical approach estimated (1) the population trend  $\beta_0 + b_{q(i)}$  in each grid cell and (2) the average population trend  $\beta_0$  over the whole flyway of interest (here the Northwestern European flyway).

To give more meaningful measure of the trends, we estimated the median percentage  $r$  of decrease in the population at a given latitude  $L$  over a duration  $D$  by calculating:

$$r = 100 \times [1 - \exp(D \times (\beta_0 + \gamma \cdot L))] \quad (5)$$

We calculated this percentage at latitudes 60° and 46°, for durations of 1 year and 10 years.

In order to avoid convergence issues caused by correlations between the intercept and the slope, we centered year ( $t$ ) at the year 2007 (middle of the study period, following the recommendation of Pinheiro and Bates (2000) to center explanatory variables before the fit). The model ran on R software (R Core Team, 2013) using the TMB package (Kristensen et al., 2016). Finally, we tested the existence of a remaining spatial autocorrelation in the random effects  $d_i$  and  $b_{q(i)}$  with a Moran test.

### 3 | RESULTS

The strategy of standardization of sampling units through the use of grid cells proved effective to tackle the problem of spatial autocorrelation at both the grid cell and site levels (grid cell level: Moran test  $I = 0.060$ ,  $p$ -value = .14; site level: Moran test  $I = 0.012$ ,  $p$ -value = .33). Moreover, the random estimates of slopes for both the site and grid cell did not show any departure from normality, suggesting that the model correctly fitted the data. Finally, the plot of the residuals of the model against year did not exhibit any particular pattern, meaning that the observed trend did not depart from log-linearity.

We identified a significant negative effect of the latitude of a grid cell on the population trend (Table 1). The decline in the number of pochards estimated using our hierarchical model (Equation 5) was greater at northern than at southern latitudes. Based on our model, we estimated a significant decrease in population size equal to 74% over the entire period for latitudes of 60° (SE = 6%; corresponding to a mean decrease of 11.6% per year, SE = 1.8% – calculation carried out within the developed R package vignette). In contrast, the decline was not significant in grid cells at 46° of latitude (mean decrease of 5.7%, SE = 14%; corresponding to a mean decrease of 0.54% per year, SE = 1.4%, Figure 2).

Overall, the decline in northwestern pochard populations averaged 4.9% per year over the 11 years of the study period (SE = 0.6%), which represents a total decline of 42.3% (SE = 4%; Figure 3). Standard deviations of the random effects of slopes (Table 1) at the level of both the grid cell ( $\sigma_b$ ) and site ( $\sigma_d$ ) were quite large (Figure 2): for example, the typical yearly decline in a cell

**TABLE 1** Parameter estimates and their standard errors derived from the GLMM model assessing the spatio-temporal variations in numbers of pochards in the Northwestern European flyway

Parameter	Estimation	SE
Year ( $\beta_0$ )	0.38	0.12
Latitude ( $\gamma$ )	−0.008	0.002
$\sigma_b$	0.033	0.001
$\sigma_d$	0.073	0.008
$\sigma_e$	1.18	0.01

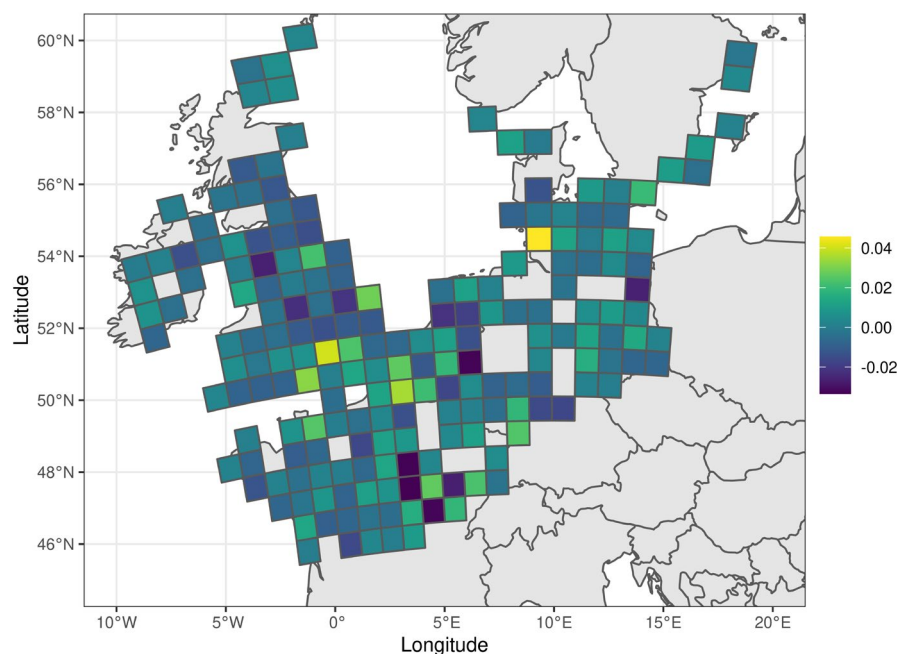
Note: Year is for the global slope parameter  $\beta_0$  associated with the year in the model; Latitude is the slope coefficient  $\gamma$  of latitude on the random effect of the grid cells. The parameters  $\sigma_e$ ,  $\sigma_d$ , and  $\sigma_b$  are the standard deviations of the overdispersion residuals, the site random effects, and the random effects of the grid cells, respectively.

located at latitude 60° varied between  $(1 - \exp(\beta_0 + \gamma \cdot 60 + \sigma_b)) = 8.8\%$  and  $(1 - \exp(\beta_0 + \gamma \cdot 60 - \sigma_b)) = 14.6\%$ . Similarly, the typical yearly decline in a sampling site located in a typical cell varied between 5% and 17.9% per year, reflecting strong differences in observed trends in numbers at these two sampling levels. Finally, the decline in numbers in a given site did not depend on the initial number of individuals counted at this site (the correlation coefficient between the intercept of the site and the slope of the relationship between year and number of individuals in this site was equal to 0;  $R = 0.0005$  to be precise). In other words, all sites had the same probability to display any given decline independently of their initial state (in terms of number of wintering individuals).

### 4 | DISCUSSION

In this study, we provide an example of the typical issues one may encounter when analyzing such large-scale population censuses (here IWC) and provide a general framework to tackle them. In a preliminary step, we ran analyses that allowed not only detecting spatial autocorrelation but also helped characterizing its nature, that is, spatio-temporal heterogeneity in sampling effort. In addition, these preliminary analyses showed that the decline in pochards observed during the study period did not depart from linearity. In a second step, we standardized the sampling units using a 75 × 75 km grid overlaid on the flyway of interest. This strategy proved efficient both to remove spatial autocorrelation (and therefore allowed estimating improved population trends regarding this potential source of bias) and to detect spatial (latitudinal) heterogeneity in the observed decline in the focal species in the area of interest.

Despite potential biases, one must recognize that without large-scale and long-lasting surveys like the International Waterbirds Census or its North American counterpart, the Mid-Winter Survey, monitoring the conservation status of so many bird species would have simply been impossible (IUCN, 2020). Moreover, these monitoring schemes have proven crucial in the understanding of the impact of anthropogenic activities on wildlife (e.g., harvest and global warming) and the effect of mitigating actions (e.g., creation



**FIGURE 2** Spatial distribution of the random effects of population trends of common pochards (average changes in the logarithm of numbers of individuals per year) at the grid cell scale

of protected areas and implementation of conservation action plans, Pavón-Jordán et al., 2020; Marchowski et al., 2020). Unfortunately, because these surveys were initiated without proper sampling strategies and in a time (1935s) when data storage, digitizing, and statistical computing were still in their infancy, they may suffer from serious weaknesses that must be addressed properly, for example, using appropriate modeling framework, before any inference.

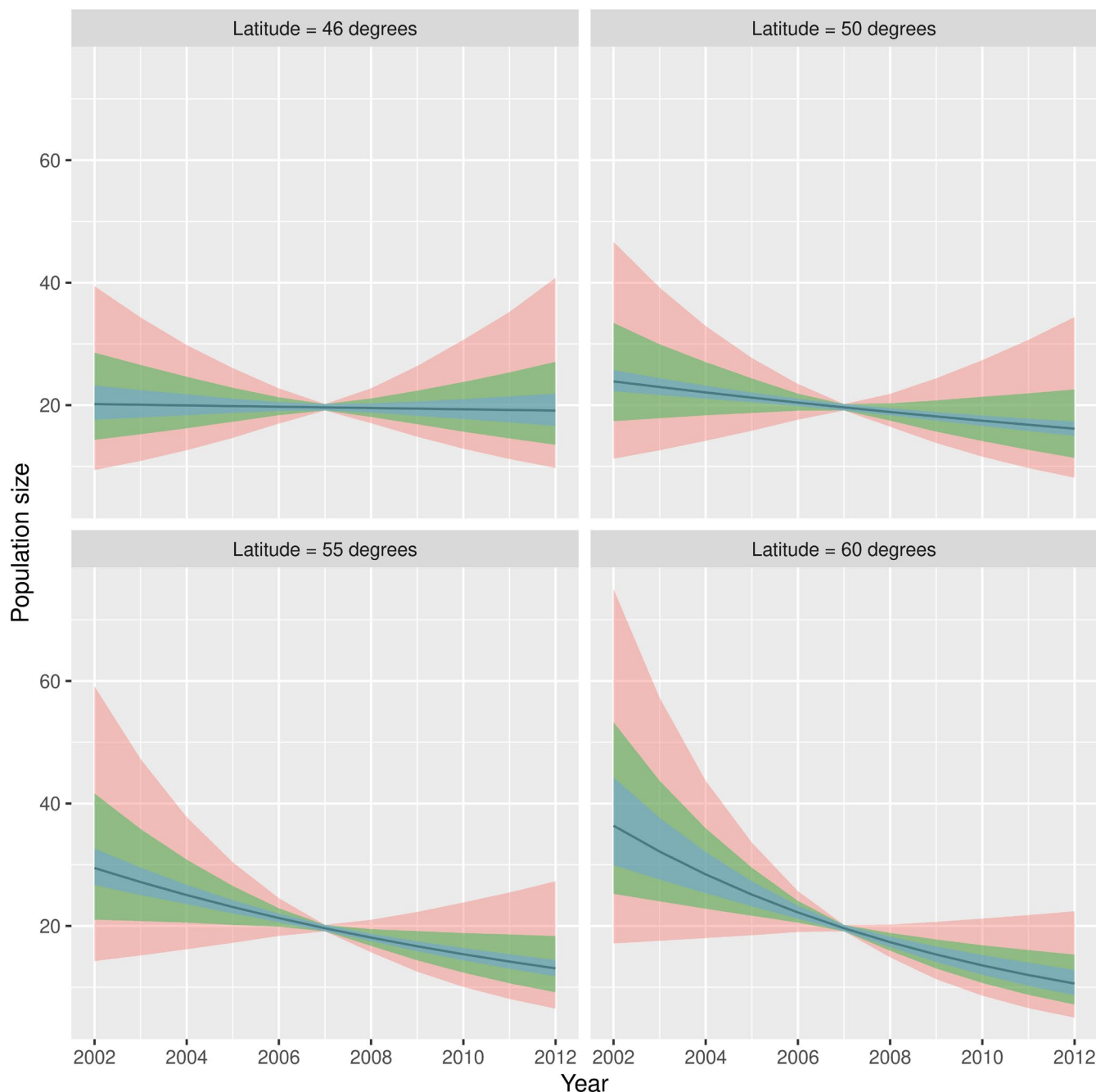
Bayesian hierarchical modeling has previously been used to assess bird population trends (including ducks) in North America based on MWS, CBC counts, and North American Breeding Bird Surveys (Link et al., 2006; Meehan et al., 2021; Sauer & Link, 2011; Soykan et al., 2016). However, the majority of these studies did not explicitly tackle spatial autocorrelation. Note that several authors also used a grid discretization of the study area to both standardize sampling units and model the spatial and temporal autocorrelation structure in the data (Bled et al., 2013; Meehan et al., 2019) into a Bayesian hierarchical model (conditional autoregressive and CAR structure). We did not model the autocorrelation using such models in our study because the standardization of sampling units through the grid approach proved fully efficient to remove spatial autocorrelation/structure. This does not mean, however, that a  $75 \times 75$  km grid will prove efficient to remove spatial autocorrelation in all instances. Should they adopt our approach, future studies may have to adjust the size of grid cells and eventually resort to approach consisting to tackle spatial structure directly into the model (Meehan et al., 2019).

Thus, turning back to the focal species, it turns out that the annual decline in populations in the northwestern flyway averaged  $4.9\% \pm 0.6$  SE per year, a value similar to those computed previously with TRIM by Nagy et al. (2014) and BirdLife International (2015) (respectively, 5.9% per year on average over 2003–2012 and 4.4% per year over 2006–2015). Therefore, our more robust analysis confirms that pochard population experienced a sharp decline in the northwestern flyway.

Although our model proved to be efficient in circumventing many limits of the dataset, this modeling approach is not the panacea and

cannot be considered as a replacement for a proper sampling of the population. Indeed, if we had the means to design a proper sampling design over the continental scale, we would also probably have defined another aim to the study. More precisely, we would have designed the sampling design and protocol to allow the estimation of the trend of the whole population size over the migration corridor. Due to the lack of common sampling strategy, we could not reach such an aim, and we designed a model allowing to estimate a spatial mean of the local trends over the corridor, which we used as a proxy of the pochard population trend. However, a spatial mean of the local trends is not exactly the same thing as the trend of the whole population size. Indeed, most of the pochard population is probably located in a restricted number of grid cells (e.g., in the Netherlands, where wetlands are numerous), whereas this spatial mean gives the same weight to all the grid cells of the corridor including those with a tiny fraction of the population. The local trends estimated in scarcely populated grid cells thus weigh too much in our global assessment. Our estimated population trend is therefore probably biased, although the population decline observed in most of the corridor gives us confidence in our qualitative assessment of the population status.

Numerous waterbird populations have been found (or are expected) to display range shifts toward the north/northeast owing to migration short stopping (reduction in migration distances) in response to rising temperatures (Elmberg et al., 2014; Visser et al., 2009). In these species, the numbers of wintering individuals usually experience declines in southwestern parts of the wintering range and increases in the northwestern parts, in Europe (Lehikoinen et al., 2013; Pavón-Jordán et al., 2020). Our analyses do not support this view for pochards in the northwestern flyway where the decline in wintering individuals was in fact significantly stronger at northern than southern latitudes ( $-12\%$  per year at  $60^\circ$  of latitude against stability at  $46^\circ$ ). According to ringing recoveries, large proportions of pochards wintering in Northwestern Europe originate from beyond or up to the Ural Mountains (Folliot et al., 2020), casting serious



**FIGURE 3** Expected trend in the number of common pochards counted in the northwestern flyway computed for average sites at 46°, 50°, 55°, and 60° latitude (curve and 95% confidence intervals in blue). The green area corresponds to the 95% prediction interval on the trends at the scale of the grid cell. The red area corresponds to the 95% prediction interval on the trends at the scale of the site. The blue area corresponds to the 95% credible interval on the mean trend. Note that all confidence and prediction intervals have minimal width in 2007 because the variable “year” has been centered to allow the fit of the model (i.e.,  $t = 0$  for year 2007, see *Material and Methods*)

doubt about the pertinence of the three putative flyways as delineated by Scott and Rose (1996). Thus, we cannot totally rule out that the decline in pochard in Northwestern Europe is due to individuals staying closer to their breeding grounds thereby evading the survey by remaining outside the putative flyway where most IWC counts are carried out. Moreover, it is also possible that increasing numbers of individuals are still spending the wintering season within the limits of their putative flyway, although closer to their breeding ground on (still) not surveyed sites particularly in the European part of Russia.

Previous studies addressing the problem of short stopping in waterbirds (e.g., ducks and wading birds) either computed geographic range shifts (Pavón-Jordán et al., 2020) or based their reasoning upon crude comparisons between country in geographical changes in populations trends (Lehikoinen et al., 2013; Marchowski et al., 2020). Here, we provide a formal, reproducible framework for estimating how population trends vary over space showing that the observed decline is gradually increasing with latitude, which is similar in spirit to previous work on similar issues. We just changed the target of the inference, shifting from the estimation of a trend based on an estimate of total



relative abundance on an area (Bled et al., 2013; Sauer & Link, 2011) to the estimation of an average of trends of local relative abundance because of the impossibility for us to suppose a spatial autocorrelation in relative abundance in sampled sites for waterbirds (i.e., no reason to suppose that the abundance will be similar in two close water points with different sizes). From a conservation and management point of view, therefore, our approach provides a convenient and flexible way for accurately assessing the status of species across space and time and eventually seeking its ultimate causes.

One of the most important finding of our study, which has important biological and statistical consequences, concerns the fact that population trends varied randomly across sites, and is not correlated with the intercept of our model, that is, with the average number of animals detected in the site. The rate of decline, therefore, did not vary according to mean numbers of individuals detected in the site. This is an interesting finding because if we suppose that the number of detected animals reflects the actual number of animals present in a site, then mean population trends can be assessed – in average – even in sites where few animals were detected, although this would still require a large number of such sites due to the large variability in the estimated trends from one site to another. This also gives us insights into the understanding of pochard's social processes during winter, and more particularly that large aggregations are not systematically favored by the birds as is often suspected. However, we concur that our approach cannot finely assess behavioral and/or social processes and that further research is needed to assess the underlying (social or behavioral) mechanisms of group structure and size.

## 5 | CONCLUSIONS

The approach presented here may provide a convenient framework for quantitatively assessing spatial and temporal changes in population trends. However, although a significant improvement, our approach will probably never achieve the same performances (in terms of accuracy and precision) as a standardized sampling scheme. The take-home message therefore is that census schemes such as the IWC should as far as possible aim at implementing a standardized sampling strategy allowing tackling the problems of sample representativeness and spatial heterogeneity of sampling effort before data collection. Only such a strategy would provide reliable estimates of both population sizes and trends. This issue was raised a few years ago with the Midwinter Inventory in the USA (Eggeman & Johnson, 1989; Heusmann, 1999). These surveys were abandoned in most states in favor of inventory with a standardized sampling protocol (see, e.g., Herbert et al., 2018; Masto et al., 2020; Whitaker et al., 2019).

## ACKNOWLEDGMENTS

This study was supported by the Office National de la Chasse et de la Faune Sauvage (now Office Français de la Biodiversité) through a PhD grant to BF. We warmly thank Szabolcs Nagy and Tom Langendoen from Wetlands International Head Office for providing the pochard wintering census dataset. We also thank the many

people who spend much time to count birds, allowing us to work over great spatial and temporal scales. Finally, we thank two anonymous reviewers and the associate editor for their valuable comments and suggestions that greatly improved the content of the manuscript.

## CONFLICT OF INTEREST

The authors have no competing interests.

## AUTHOR CONTRIBUTIONS

**Benjamin Folliot:** Conceptualization (equal); Data curation (equal); Formal analysis (equal); Writing – original draft (lead). **Alain Caizergues:** Conceptualization (equal); Supervision (equal); Writing – original draft (equal). **Adrien Tableau:** Conceptualization (equal); Data curation (equal); Writing – original draft (equal). **Guillaume Souchay:** Conceptualization (equal); Writing – original draft (equal). **Matthieu Guillemain:** Conceptualization (equal); Supervision (equal); Writing – original draft (equal). **Jocelyn Champagnon:** Conceptualization (equal); Supervision (equal); Writing – original draft (equal). **Clément Calenge:** Conceptualization (equal); Formal analysis (equal); Software (lead); Writing – original draft (equal).

## OPEN RESEARCH BADGES



This article has been awarded <Open Materials, Open Data, Preregistered Research Designs> Badges. All materials and data are publicly accessible via the Open Science Framework at <https://doi.org/10.5281/zenodo.5710550>; <https://github.com/ClementCalenge/pochardTrend/commits/v1>.

## DATA AVAILABILITY STATEMENT

We included all the code and data used in the R package pochardTrend (Digital Object Identifier: <https://zenodo.org/record/5710550#.YkGTkOdBxhF>) on GitHub at the following URL: <https://github.com/ClementCalenge/pochardTrend>. The reader can install this package in R using the function `devtools::install_github("ClementCalenge/pochardTrend", ref="main")`. The pochardTrend package includes a vignette describing how the user can easily reproduce the model fit (available with the command `vignette("pochardTrend")`), once the package has been installed).

## ORCID

Benjamin Folliot <https://orcid.org/0000-0002-9725-2102>

Guillaume Souchay <https://orcid.org/0000-0003-0214-9362>

## REFERENCES

- Amano, T., Székely, T., Sandel, B., Nagy, S., Mundkur, T., Langendoen, T., Blanco, D., Soykan, C. U., & Sutherland, W. J. (2018). Successful conservation of global waterbird populations depends on effective governance. *Nature*, 553(7687), 199–202.
- BirdLife International (2015). *Aythya ferina*. The IUCN Red List of Threatened Species 2015: e.T22680358A59966548.
- Bivand, R., Altman, M., Anselin, L., Assunção, R., Berke, O., Bernat, A., & Blanchet, G. (2015). Package 'spdep'. The Comprehensive R Archive

- Network. <https://mran.microsoft.com/snapshot/2017-08-23/web/packages/spdep/spdep.pdf>
- Bled, F., Sauer, J., Pardieck, K., Doherty, P., & Royle, J. A. (2013). Modeling trends from North American Breeding Bird Survey data: A spatially explicit approach. *PLoS One*, 8(12), e81867. <https://doi.org/10.1371/journal.pone.0081867>
- Caizergues, A., Van Wilgenburg, S. L., & Hobson, K. A. (2016). Unraveling migratory connectivity of two European diving ducks: A stable isotope approach. *European Journal of Wildlife Research*, 62, 701–711.
- Cameron, A., & Trivedi, P. (1998). *Regression analysis of count data*. Econometric society Monographs.
- Cliff, A., & Ord, J. (1981). *Spatial processes. Models & applications*. Pion limited.
- Delany, S. (2010). Guidance on waterbird monitoring methodology: Field protocol for waterbird counting. *Wetlands International*, 25, 4–5.
- Eggeman, D. R., & Johnson, F. A. (1989). Variation in effort and methodology for the midwinter waterfowl inventory in the Atlantic Flyway. *Wildlife Society Bulletin (1973-2006)*, 17(3), 227–233.
- Elmberg, J., Nummi, P., Pöysä, H., Sjöberg, K., Gunnarsson, G., Clausen, P., Guillemain, M., Rodrigues, D., & Väänänen, V.-M. (2006). The scientific basis for new and sustainable management of migratory European ducks. *Wildlife Biology*, 12(2), 121–127.
- Elmberg, J., Rebecca Hessel, A. D., & Fox, L. D. (2014). Interpreting seasonal range shifts in migratory birds: A critical assessment of 'short-stopping' and a suggested terminology. *Journal of Ornithology*, 155(3), 571–579.
- Folliot, B., Caizergues, A., Barbotin, A., & Guillemain, M. (2017). Environmental and individual correlates of Common pochard (*Aythya ferina*) nesting success. *European Journal of Wildlife Research*, 63, 69.
- Folliot, B., Guillemain, M., Champagnon, J., & Caizergues, A. (2018). Patterns of spatial distribution and migration phenology of common pochards *Aythya ferina* in the Western Palearctic: A ring-recoveries analysis. *Wildlife Biology*, 2018, 1.
- Folliot, B., Souchay, G., Champagnon, J., Guillemain, M., Durham, M., Hearn, R., Hofer, J., Laesser, J., Sorin, C., & Caizergues, A. (2020). When survival matters: Is decreasing survival underlying the decline of Common pochard in Western Europe? *Wildlife Biology*, 2020(3), 1–12. <https://doi.org/10.2981/wlb.00682>
- Fox, A. D., Caizergues, A., Banik, M. V., Devos, K., Dvorak, M., Ellerman, M., Folliot, B., Green, A. J., Grüneberg, C., Guillemain, M., Håland, A., Hornman, M., Keller, V., Koshelev, A. I., Kostiushev, V. A., Kozulin, A., Ławicki, Ł., Luiguijõe, L., Müller, C., ... Wahl, J. (2016). Recent changes in the abundance of Common Pochard *Aythya ferina* breeding in Europe. *Wildfowl*, 66, 22–40.
- Gaget, E., Galewski, T., Jiguet, F., & Le Viol, I. (2018). Waterbird communities adjust to climate warming according to conservation policy and species protection status. *Biological Conservation*, 227, 205–212. <https://doi.org/10.1016/j.biocon.2018.09.019>
- Gaget, E., Le Viol, I., Pavón-Jordán, D., Cazalis, V., Kerbiriou, C., Jiguet, F., Popoff, N., Dami, L., Mondain-Monval, J. Y., Defos du Rau, P., Abdou, W., Bozic, L., Dakki, M., Encarnação, V., Erciyas-Yavuz, K., Etayeb, K. S., Molina, B., Petkov, N., Uzunova, D., ... Galewski, T. (2020). Assessing the effectiveness of the Ramsar Convention in preserving wintering waterbirds in the Mediterranean. *Biological Conservation*, 243, 108485. <https://doi.org/10.1016/j.biocon.2020.108485>
- Gourlay-Larour, M. L., Pradel, R., Guillemain, M., Guitton, J.-S., L'hostis, M., Santin-Janin, H., & Caizergues, A. (2014). Movement patterns in a partial migrant: A multi-event capture-recapture approach. *PLoS One*, 9, e96478.
- Gourlay-Larour, M. L., Pradel, R., Guillemain, M., Santin-Janin, H., L'Hostis, M., & Caizergues, A. (2013). Individual turnover in common pochards wintering in western France. *Journal of Wildlife Management*, 77, 477–485.
- Gourlay-Larour, M. L., Schricke, V., Sorin, C., L'Hostis, M., & Caizergues, A. (2012). Movements of wintering diving ducks: New insights from nasal saddled individuals. *Bird Study*, 59, 266–278.
- Gregory, R. D., Vorisek, P., Van strien, A., Gmelig meyling, A. W., Jiguet, F., Fornasari, L., Reif, J., Chylarecki, P., & Burfield, I. J. (2007). Population trends of widespread woodland birds in Europe. *Ibis*, 149, 78–97. <https://doi.org/10.1111/j.1474-919X.2007.00698.x>
- Herbert, J. A., Chakraborty, A., Naylor, L. W., Beatty, W. S., & Kremenetz, D. G. (2018). Effects of landscape structure and temporal habitat dynamics on wintering mallard abundance. *Landscape Ecology*, 33(8), 1319–1334. <https://doi.org/10.1007/s10980-018-0671-7>
- Heusmann, H. W. (1999). Let's get rid of the midwinter waterfowl inventory in the Atlantic Flyway. *Wildlife Society Bulletin (1973-2006)*, 27(3), 559–565.
- IUCN. (2020). *The IUCN Red List of Threatened Species. Version 2020-2*. <https://www.iucnredlist.org>
- Jarman, P. (1996). Complete counts. In D. E. Wilson, F. R. Cole, J. D. Nichols, R. Rudran, & M. Foster (Eds.), *Measuring and monitoring biological diversity: Standard methods for mammals* (pp. 192–193). Smithsonian Institution Press.
- Jørgensen, P. S., Böhning-Gaese, K., Thorup, K., Tøttrup, A. P., Chylarecki, P., Jiguet, F., Lehtikoinen, A., Noble, D. G., Reif, J., Schmid, H., van Turnhout, C., Burfield, I. J., Foppen, R., Voříšek, P., van Strien, A., Gregory, R. D., & Rahbek, C. (2016). Continent-scale global change attribution in European birds-combining annual and decadal time scales. *Global Change Biology*, 22(2), 530–543. <https://doi.org/10.1111/gcb.13097>
- Keller, I., Korner-Nievergelt, F., & Jenni, L. (2009). Within-winter movements: A common phenomenon in the Common Pochard *Aythya ferina*. *Journal of Ornithology*, 150, 483–494.
- Knappe, J., & de Valpine, P. (2012). Are patterns of density dependence in the Global Population Dynamics Database driven by uncertainty about population abundance? *Ecology Letters*, 15, 17–23. <https://doi.org/10.1111/j.1461-0248.2011.01702.x>
- Komdeur, J., Komdeur, J., Bertelsen, J., & Cracknell, G. (1992). *Manual for aeroplane and ship surveys of waterfowl and seabirds*. IWRB Slimbridge.
- Kristensen, K., Anders Nielsen, C. W., Berg, H. S., & Bell, B. (2016). TMB: Automatic differentiation and Laplace approximation. *Journal of Statistical Software*, 70(5), 1–21.
- Lehtikoinen, A., Jaatinen, K., Vähätalo, A. V., Clausen, P., Crowe, O., Deceuninck, B., Hearn, R., Holt, C. A., Hornman, M., Keller, V., Nilsson, L., Langendoen, T., Tománková, I., Wahl, J., & Fox, A. D. (2013). Rapid climate driven shifts in wintering distributions of three common waterbird species. *Global Change Biology*, 19(7), 2071–2081. <https://doi.org/10.1111/gcb.12200>
- Link, W. A., & Sauer, J. R. (1998). Estimating population change from count data: Application to the North American Breeding Bird Survey. *Ecological Applications*, 8(2), 258–268.
- Link, W. A., Sauer, J. R., & Niven, D. K. (2006). A hierarchical model for regional analysis of population change using Christmas Bird Count data, with application to the American Black Duck. *The Condor*, 108(1), 13–24. <https://doi.org/10.1093/condor/108.1.13>
- Marchowski, D., Ławicki, Ł., Fox, A. D., Nielsen, R. D., Petersen, I. K., Hornman, M., Nilsson, L., Haas, F., Wahl, J., Kieckbusch, J., Nehls, H. W., Calbrade, N., Hearn, R., Meissner, W., Fitzgerald, N., Luiguijõe, L., Zenatello, M., Gaudard, C., & Koschinski, S. (2020). Effectiveness of the European Natura 2000 network to sustain a specialist wintering waterbird population in the face of climate change. *Scientific Reports*, 10(1), 1–12. <https://doi.org/10.1038/s41598-020-77153-4>
- Masto, N. M., Kaminski, R. M., Gerard, P. D., & Ross, B. E. (2020). Aerial strip-transect surveys: Indexing autumn-winter waterbird abundance and distribution in South Carolina. *Journal of Southeastern Association of Fish and Wildlife Agencies*, 8, 89–100.
- Meehan, T. D., Kaminski, R. M., Lebaron, G. S., Michel, N. L., Bateman, B. L., & Wilsey, C. B. (2021). Half-century winter duck abundance and temperature trends in the Mississippi and Atlantic flyways. *The Journal of Wildlife Management*, 85(4), 713–722. <https://doi.org/10.1002/jwmg.22023>

- Meehan, T. D., Michel, N. L., & Rue, H. (2019). Spatial modeling of Audubon Christmas Bird Counts reveals fine-scale patterns and drivers of relative abundance trends. *Ecosphere*, 10(4), e02707. <https://doi.org/10.1002/ecs2.2707>
- Musil, P., Musilová, Z., Fuchs, R., & Poláková, S. (2011). Long-term changes in numbers and distribution of wintering waterbirds in the Czech Republic, 1966–2008. *Bird Study*, 58(4), 450–460. <https://doi.org/10.1080/00063657.2011.603289>
- Musilová, Z., Musil, P., Zouhar, J., Adam, M., & Bejček, V. (2018). Importance of Natura 2000 sites for wintering waterbirds: Low preference, species' distribution changes and carrying capacity of Natura 2000 could fail to protect the species. *Biological Conservation*, 228, 79–88. <https://doi.org/10.1016/j.biocon.2018.10.004>
- Nagy, S., Nagy, S., Flink, S., & Langendoen, T. (2014). *Waterbird trends 1988–2012 Results of trend analyses of data from the International Waterbird Census in the African-Eurasian Flyway*. Wetlands International. <https://www.wetlands.org/publications/1304/>
- O'Hara, R., & Kotze, J. (2010). Do not log-transform count data. *Methods in Ecology and Evolution*, 1, 118–122.
- Pannekoek, J., & van Strien, A. (2001). *TRIM 3 manual (TRends & Indices for Monitoring data)*. Centraal Bureau voor de Statistiek, Divisie Research en Ontwikkeling.
- Pavón-Jordán, D., Abdou, W., Azafaf, H., Balaž, M., Bino, T., Borg, J. J., Božič, L., Butchart, S. H. M., Clausen, P., Sniauksta, L., Dakki, M., Devos, K., Domsa, C., Encarnação, V., Etayeb, K., Faragó, S., Fox, A. D., Frost, T., Gaudard, C., ... Lehtikoinen, A. (2020). Positive impacts of important bird and biodiversity areas on wintering waterbirds under changing temperatures throughout Europe and North Africa. *Biological Conservation*, 246, 108549. <https://doi.org/10.1016/j.biocon.2020.108549>
- Pavón-Jordán, D., Clausen, P., Dagys, M., Devos, K., Encarnação, V., Fox, A. D., Frost, T., Gaudard, C., Hornman, M., Keller, V., Langendoen, T., Ławicki, Ł., Lewis, L. J., Lorentsen, S.-H., Luigujoe, L., Meissner, W., Molina, B., Musil, P., Musilova, Z., ... Lehtikoinen, A. (2019). Habitat-and species-mediated short-and long-term distributional changes in waterbird abundance linked to variation in European winter weather. *Diversity and Distributions*, 25(2), 225–239. <https://doi.org/10.1111/ddi.12855>
- Pinheiro, J., & Bates, D. (2000). *Mixed effects models in S and S-Plus*. Springer-Verlag.
- R Core Team (2013). *R: A language and environment for statistical computing*. R Foundation for Statistical Computing.
- Sauer, J. R., & Link, W. A. (2011). Analysis of the North American breeding bird survey using hierarchical models. *The Auk*, 128(1), 87–98.
- Sayoud, M. S., Salhi, H., Chalabi, B., Allali, A., Dakki, M., & Qninba, A. (2016). The first coordinated trans-North African mid-winter waterbird census: The contribution of the International Waterbird Census to the conservation of waterbirds and wetlands at a biogeographical level. *Biological Conservation*, 206, 11–20.
- Scott, D. A., & Rose, P. M. (1996). *Atlas of Anatidae populations in Africa and western Eurasia*. Wetlands International Indonesia Office.
- Soykan, C. U., Sauer, J., Schuetz, J. G., LeBaron, G. S., Dale, K., & Langham, G. M. (2016). Population trends for North American winter birds based on hierarchical models. *Ecosphere*, 7(5), e01351. <https://doi.org/10.1002/ecs2.1351>
- Thogmartin, W. E., Sauer, J. R., & Knutson, M. G. (2004). A hierarchical spatial model of avian abundance with application to Cerulean Warblers. *Ecological Applications*, 14(6), 1766–1779. <https://doi.org/10.1890/03-5247>
- Tománková, I., Boland, H., Reid, N., & Fox, A. D. (2013). Assessing the extent to which temporal changes in waterbird community composition are driven by either local, regional or global factors. *Aquatic Conservation: Marine and Freshwater Ecosystems*, 23(2), 343–355. <https://doi.org/10.1002/aqc.2303>
- Toussaint, G. T. (1980). The relative neighbourhood graph of a finite planar set. *Pattern Recognition*, 12(4), 261–268.
- Visser, M. E., Perdeck, A. C., van BALEN, J. H., & Both, C. (2009). Climate change leads to decreasing bird migration distances. *Global Change Biology*, 15(8), 1859–1865. <https://doi.org/10.1111/j.1365-2486.2009.01865.x>
- Whitaker, J. M., Ringelman, K. M., Marty, J. R., Selman, W. M., & Linscombe, J. T. (2019). Changes in Waterfowl Abundance and Species Composition on Louisiana Coastal Wildlife Management Areas and Refuges 2004–2016. *Journal of the Southeastern Association of Fish and Wildlife Agencies*, 6, 136–145.
- Wickham, H., Hester, J., Chang, W., & Bryan, J. (2021). devtools: Tools to Make Developing R Packages Easier. <https://devtools.r-lib.org/>

**How to cite this article:** Folliot, B., Caizergues, A., Tableau, A., Souchay, G., Guillemain, M., Champagnon, J., & Calenge, C. (2022). Assessing spatiotemporal variation in abundance: A flexible framework accounting for sampling bias with an application to common pochard (*Aythya ferina*). *Ecology and Evolution*, 12, e8835. <https://doi.org/10.1002/ece3.8835>