



HAL
open science

Endothelial cells give a boost to senescence surveillance

Daniel Sampaio Gonçalves, William M Keyes

► **To cite this version:**

Daniel Sampaio Gonçalves, William M Keyes. Endothelial cells give a boost to senescence surveillance. Genes and Development, 2022, 36 (9-10), pp.511-513. 10.1101/gad.349767.122 . hal-03715500

HAL Id: hal-03715500

<https://hal.science/hal-03715500>

Submitted on 26 Sep 2023

HAL is a multi-disciplinary open access archive for the deposit and dissemination of scientific research documents, whether they are published or not. The documents may come from teaching and research institutions in France or abroad, or from public or private research centers.

L'archive ouverte pluridisciplinaire **HAL**, est destinée au dépôt et à la diffusion de documents scientifiques de niveau recherche, publiés ou non, émanant des établissements d'enseignement et de recherche français ou étrangers, des laboratoires publics ou privés.

OUTLOOK

Endothelial cells give a boost to senescence surveillance

Daniel Sampaio Gonçalves^{1,2,3,4} and William M. Keyes^{1,2,3,4}

¹Institut de Génétique et de Biologie Moléculaire et Cellulaire (IGBMC), Illkirch 67400, France; ²UMR7104, Centre National de la Recherche Scientifique (CNRS), Illkirch 67400, France; ³U1258, Institut National de la Santé et de la Recherche Médicale (INSERM), Illkirch 67400, France; ⁴Université de Strasbourg, Illkirch 67400, France

Senescence is a specialized form of cell cycle arrest induced in response to damage and stress. In certain settings, senescent cells can promote their own removal by recruitment of the immune system, a process that is thought to decline in efficiency with age. In this issue of *Genes & Development*, Yin et al. (pp. 533–549) discover a surprising cross-talk where senescent cells instruct endothelial cells to help organize the clearance of the senescent population. This uncovers yet another layer of complexity in senescent cell biology, with implications for cancer treatment and aging.

In cells harboring oncogenic mutations, senescence becomes activated to prevent their uncontrolled proliferation, functioning as a tumor-suppressive mechanism. One hallmark feature of these and other senescent cells is their production of a complex secretome of proteins and extracellular vesicles known as the “senescence-associated secretory phenotype” (SASP), which enables senescent cells to interact with their microenvironment (Muñoz-Espín and Serrano 2014; Rhinn et al. 2019; Birch and Gil 2020). A previous landmark study investigating Ras-induced senescence (RIS) shed light on one key function of the SASP, using an elegant model of transposon-mediated delivery of oncogenic Ras to induce senescence in individual hepatocytes in the liver (Kang et al. 2011). They found that the oncogene-expressing senescent cells promoted their own removal, with the SASP activating the immune system—notably, CD4⁺ T cells and monocytes/macrophages—to remove the premalignant senescent cells. Critically, if this clearance was blocked, senescent cells persisted and hepatocarcinoma developed. Therefore, the coordinated induction and subsequent removal of senescent cells is a key tumor-suppressive mechanism.

However, it was not fully clear how this process was orchestrated at the cellular and molecular level, and the

current study from Yin et al. (2022) advances our understanding, uncovering a previously unknown involvement of endothelial cells (ECs), instructed by the senescent cells, to aid in senescence surveillance.

The investigators previously demonstrated that the SASP can promote lymphocyte adhesion and *trans*-endothelial migration (Hoare et al. 2016), prompting them to explore here how the endothelial cells changed in response to SASP exposure. To address this, they isolated liver sinusoidal endothelial cells (LSECs) from patients and exposed these to the SASP in culture, before performing RNA sequencing. Interestingly, they found that LSECs turned on key inflammatory genes involved in immune cell recruitment and adhesion, such as IL6, IL8, ICAM1, ICOSLG, and others. Transcription factor (TF) motif analysis on the differentially expressed genes implicated the involvement of NF-κB, which they validated at the protein and RNA levels. Importantly, they also demonstrated these SASP-induced changes in other ECs, including human umbilical vein endothelial cells (HUVECs) and human aortic endothelial cells (HAECs).

Interestingly, NF-κB is a master regulator of the SASP in senescent cells (Chien et al. 2011), so the investigators sought to explore whether it now also played a functional role in the ECs. Using genetic or drug inhibitors, they blocked NF-κB signaling in SASP-treated ECs and showed that, indeed, NF-κB mediated the induction of the inflammatory genes, which in culture models was necessary for lymphocyte adhesion and *trans*-endothelial migration.

A critical question was now whether similar cross-talk happens in vivo. To address this, the investigators used the model of transposon-mediated delivery of oncogenic Ras to the liver, validating RIS only in the hepatocytes, and senescent cell clearance after 12 d. In this setting, they then used endothelial-specific Cre-mediated reporter mice to isolate LSECs and confirmed the induction of NF-κB target genes by the SASP in the LSECs in vivo (Fig. 1A).

[*Keywords*: senescence; immune surveillance; SASP; endothelium; liver; NF-κB]

Corresponding author: bill.keyes@igbmc.fr

Article is online at <http://www.genesdev.org/cgi/doi/10.1101/gad.349767.122>.

© 2022 Sampaio Gonçalves and Keyes This article is distributed exclusively by Cold Spring Harbor Laboratory Press for the first six months after the full-issue publication date (see <http://genesdev.cshlp.org/site/misc/terms.xhtml>). After six months, it is available under a Creative Commons License (Attribution-NonCommercial 4.0 International), as described at <http://creativecommons.org/licenses/by-nc/4.0/>.

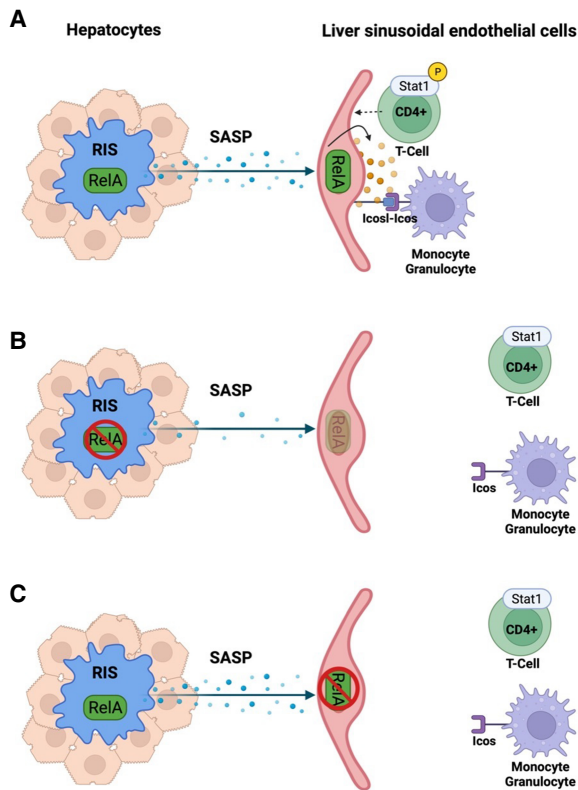


Figure 1. SASP exposure activates LSECs to recruit immune cells for senescence surveillance. (A) Oncogene expression in single hepatocytes leads to RAS-induced senescence (RIS) and activation of NF- κ B/RelA signaling, which regulates the senescence-associated secretory phenotype (SASP). SASP factors act on adjacent liver sinusoidal endothelial cells (LSECs) and induce NF- κ B/RelA. This induces inflammatory gene expression, which activates Stat1 in CD4⁺ T cells, and up-regulation of *Icosl*, which leads to recruitment of Icos⁺ immunocytes. (B) Inhibition of *RelA* in RIS decreases the SASP, which now fails to activate RelA in LSECs. (C) Inactivation of *RelA* in LSECs decreases recruitment of Stat1 phosphorylated CD4⁺ cells and Icos-expressing immunocytes, leading to impaired senescence surveillance. Image made with BioRender.

However, what are the functional roles for such signaling? To answer this, they used a systematic combination of cell type-specific Cre-expressing mouse models to disrupt NF- κ B either in the hepatocytes or in the LSECs, when RIS was induced only in the hepatocytes. As hypothesized, loss of NF- κ B in the senescent cells diminished their own clearance but also caused a decreased paracrine induction of NF- κ B target genes in the LSECs (Fig. 1B). However, the key result came when they deleted NF- κ B in the LSECs (Fig. 1C). This led to decreased SASP-induced inflammatory gene expression in the LSECs but also impaired clearance of the senescent hepatocytes, conclusively demonstrating that senescent hepatocytes engaged the LSECs to aid in senescence surveillance.

However, it was still not clear whether SASP-primed LSECs were merely favoring immune cell entry or whether they were influencing their functionality. Single-cell

sequencing on CD4⁺ T cells revealed that NF- κ B signaling in the endothelium was required for Stat1 signaling in T cells, a key mediator of their polarization and function (Fig. 1). Finally, the investigators returned to the increased ICOSLG expression induced by the SASP in the LSECs. As this is a key immunoregulatory factor in immune cell activation, they investigated its contribution using blocking antibodies to interfere with its ligand *Icos* and mice with diphtheria toxin receptor to ablate *Icos*⁺ cells. Ultimately, they found that *Icos*–*Icosl* signaling was required for granulocyte- and monocyte-mediated clearance of the senescent cells, although the precise role of the LSECs in this remains to be seen.

A major strength of this study is the comprehensive use of mouse models to tease apart the cell type-specific roles of NF- κ B, including reporters and deletion and ablation models, coupled with detailed *in vivo* validation of their specificity. This allowed the investigators to unequivocally show that it is the oncogene-expressing senescent cells that produce the signals to activate the ECs, notably advancing our understanding of how senescent cells communicate and function.

Of course, this also raises additional questions. Previous studies have also shown that the SASP induces functional changes in ECs (Coppé et al. 2006; Ruscetti et al. 2020). It will be interesting to unravel the functions of the other SASP-induced TFs identified here (e.g., *Egr1*, *Jun*, and *AP1*), and how broadly the influence is on other cell types beyond ECs. While the focus of this study is on RIS, senescence also has beneficial roles in development and regeneration, as well as detrimental effects in aging and age-related disease (Rhinn et al. 2019; Di Micco et al. 2021). It will be exciting to explore whether similar communication with ECs is involved in these situations. Do ECs facilitate senescence surveillance only in beneficial settings? How does this change during aging? Interestingly, LSECs are one of the first cells to undergo senescence during aging (Grosse et al. 2020). Might this alter their immune-recruitment functions, ultimately contributing to senescence accumulation during aging? Overall, the study by Yin et al. (2022) provides one more important clue into the complex biology of senescent cells and reinforces the idea that functionally manipulating them—or now their instructed neighbors—could be useful in tumor and aging contexts.

Acknowledgments

Work in the Keyes laboratory was supported in part by grants from La Fondation pour la Recherche Médicale (FRM) (AJE20160635985), Fondation ARC pour la Recherche sur le Cancer (PJA20181208104), La Fondation Schlumberger pour l'Éducation et la Recherche (FSER 19 [year 2018]/FRM), and Agence Nationale de la Recherche (ANR) (ANR-19-CE13-0023-03). D.S.G. is supported by the Fonds National de la Recherche, Luxembourg (14584624).

References

- Birch J, Gil J. 2020. Senescence and the SASP: many therapeutic avenues. *Genes Dev* **34**: 1565–1576. doi:10.1101/gad.343129.120
- Chien Y, Scuoppo C, Wang X, Fang X, Balgley B, Bolden JE, Premsrirut P, Luo W, Chicas A, Lee CS, et al. 2011. Control of the senescence-associated secretory phenotype by NF- κ B promotes senescence and enhances chemosensitivity. *Genes Dev* **25**: 2125–2136. doi:10.1101/gad.17276711
- Coppé JP, Kauser K, Campisi J, Beauséjour CM. 2006. Secretion of vascular endothelial growth factor by primary human fibroblasts at senescence. *J Biol Chem* **281**: 29568–29574. doi:10.1074/jbc.M603307200
- Di Micco R, Krizhanovsky V, Baker D, d'Adda di Fagagna F. 2021. Cellular senescence in ageing: from mechanisms to therapeutic opportunities. *Nat Rev Mol Cell Biol* **22**: 75–95. doi:10.1038/s41580-020-00314-w
- Grosse L, Wagner N, Emelyanov A, Molina C, Lacas-Gervais S, Wagner KD, Bulavin DV. 2020. Defined p16^{High} senescent cell types are indispensable for mouse healthspan. *Cell Metab* **32**: 87–99.e6. <https://doi.org/10.1016/j.cmet.2020.05.002>
- Hoare M, Ito Y, Kang T-W, Weekes MP, Matheson NJ, Patten DA, Shetty S, Parry AJ, Menon S, Salama R, et al. 2016. NOTCH1 mediates a switch between two distinct secretomes during senescence. *Nat Cell Biol* **18**: 979–992. doi:10.1038/ncb3397
- Kang TW, Yeves T, Woller N, Hoenicke L, Wuestefeld T, Dauch D, Hohmeyer A, Gereke M, Rudalska R, Potapova A, et al. 2011. Senescence surveillance of pre-malignant hepatocytes limits liver cancer development. *Nature* **479**: 547–551. doi:10.1038/nature10599
- Muñoz-Espín D, Serrano M. 2014. Cellular senescence: from physiology to pathology. *Nat Rev Mol Cell Biol* **15**: 482–496. doi:10.1038/nrm3823
- Rhinn M, Ritschka B, Keyes WM. 2019. Cellular senescence in development, regeneration and disease. *Development* **146**: dev151837. doi:10.1242/dev.151837
- Ruscetti M, Morris JP, Mezzadra R, Russell J, Leibold J, Romesser PB, Simon J, Kulick A, Ho YJ, Fennell M, et al. 2020. Senescence-induced vascular remodeling creates therapeutic vulnerabilities in pancreas cancer. *Cell* **181**: 424–441.e21. doi:10.1016/j.cell.2020.03.008
- Yin K, Patten D, Gough S, de Barros Gonçalves S, Chan A, Olan I, Cassidy L, Poblocka M, Zhu H, Lun A, et al. 2022. Senescence-induced endothelial phenotypes underpin immune-mediated senescence surveillance. *Genes Dev* (this issue). doi:10.1101/gad.349585.122



Endothelial cells give a boost to senescence surveillance

Daniel Sampaio Gonçalves and William M. Keyes

Genes Dev. 2022, **36**:

Access the most recent version at doi:[10.1101/gad.349767.122](https://doi.org/10.1101/gad.349767.122)

Related Content	Senescence-induced endothelial phenotypes underpin immune-mediated senescence surveillance Kelvin Yin, Daniel Patten, Sarah Gough, et al. Genes Dev. May , 2022 36: 533-549
References	This article cites 11 articles, 5 of which can be accessed free at: http://genesdev.cshlp.org/content/36/9-10/511.full.html#ref-list-1 Articles cited in: http://genesdev.cshlp.org/content/36/9-10/511.full.html#related-urls
Creative Commons License	This article is distributed exclusively by Cold Spring Harbor Laboratory Press for the first six months after the full-issue publication date (see http://genesdev.cshlp.org/site/misc/terms.xhtml). After six months, it is available under a Creative Commons License (Attribution-NonCommercial 4.0 International), as described at http://creativecommons.org/licenses/by-nc/4.0/ .
Email Alerting Service	Receive free email alerts when new articles cite this article - sign up in the box at the top right corner of the article or click here .

