



# **The Delta SARS-CoV-2 variant has a higher viral load than the Beta and the historical variants in nasopharyngeal samples from newly diagnosed COVID-19 patients**

Elisa Teyssou, Héloïse Delagrèverie, Benoit Visseaux, Sidonie Lambert-Niclot, Ségolène Brichler, Valentine Ferre, Stéphane Marot, Aude Jary, Eve Todesco, Aurélie Schnuriger, et al.

## **► To cite this version:**

Elisa Teyssou, Héloïse Delagrèverie, Benoit Visseaux, Sidonie Lambert-Niclot, Ségolène Brichler, et al.. The Delta SARS-CoV-2 variant has a higher viral load than the Beta and the historical variants in nasopharyngeal samples from newly diagnosed COVID-19 patients. *Journal of Infection*, 2021, 83 (4), pp.e1-e3. 10.1016/j.jinf.2021.08.027 . hal-03713074

**HAL Id: hal-03713074**

**<https://hal.science/hal-03713074v1>**

Submitted on 6 Sep 2024

**HAL** is a multi-disciplinary open access archive for the deposit and dissemination of scientific research documents, whether they are published or not. The documents may come from teaching and research institutions in France or abroad, or from public or private research centers.

L'archive ouverte pluridisciplinaire **HAL**, est destinée au dépôt et à la diffusion de documents scientifiques de niveau recherche, publiés ou non, émanant des établissements d'enseignement et de recherche français ou étrangers, des laboratoires publics ou privés.



Since January 2020 Elsevier has created a COVID-19 resource centre with free information in English and Mandarin on the novel coronavirus COVID-19. The COVID-19 resource centre is hosted on Elsevier Connect, the company's public news and information website.

Elsevier hereby grants permission to make all its COVID-19-related research that is available on the COVID-19 resource centre - including this research content - immediately available in PubMed Central and other publicly funded repositories, such as the WHO COVID database with rights for unrestricted research re-use and analyses in any form or by any means with acknowledgement of the original source. These permissions are granted for free by Elsevier for as long as the COVID-19 resource centre remains active.



## Letter to the Editor

**The Delta SARS-CoV-2 variant has a higher viral load than the Beta and the historical variants in nasopharyngeal samples from newly diagnosed COVID-19 patients**


Dear editor,

Following the publication of Tang et al.<sup>1</sup>, we have previously shown that the Beta variant presented an intermediate relative viral load (VL) between the Alpha and the historical lineages in nasopharyngeal samples at diagnosis, a difference with historical lineages which may be associated with higher infectivity.<sup>2</sup>

In December 2020, novel SARS-CoV-2 variants emerged in India (B.1.617.1, B.1.617.2 and B.1.617.3) and led to a huge increase in positive cases<sup>3</sup>. B.1.617.2, known as the Delta variant, became rapidly the dominant variant and is now present in more than 124 countries, leading to a new surge in cases in France. To date, the Delta variant accounts for 90% of new cases in France. Recently, it has been shown in China that the relative VL of the Delta variant of quarantine contact cases (at their first positive RT-PCR) was strongly higher than the original 19A/19B lineage<sup>4</sup>. Moreover, it has been established that the Delta variant presented a transmissibility 40 to 60% higher than the Alpha variant<sup>5</sup>.

In order to evaluate the VL of the Delta variant in France, we measured and compared its relative VL with three other SARS-CoV-2 variants: the Alpha, the Beta and the historical (20A/EU2) SARS-CoV-2 variants, collected from four hospital laboratories in Paris area (Pitié-Salpêtrière, Bichat-Claude Bernard, Saint-Antoine/Trousseau and Avicenne hospitals) at their epidemic pic. A total of 738 RT-PCR SARS-CoV-2 positive nasopharyngeal samples collected at diagnosis were screened to assess SARS-CoV-2 viral lineages using the same method as in our previous study<sup>2</sup>. Sanger sequencing of the receptor binding domain (RBD) was used to assess the variant type. The relative VL was assessed from CT values (for ORF1ab and N target genes) obtained by the TaqPath™ COVID-19 RT-PCR (ThermoFisher, Waltham, USA) and by linear regression in log<sub>10</sub> copies/ml with a standard curve realized from a SARS-CoV-2 positive nasopharyngeal sample quantified by Droplet-Digital™ PCR (Bio-Rad). Statistical analyses were performed with the STATVIEW software (ANOVA with a multiple comparison test).

We analysed the results from 738 SARS-CoV-2 infected patients (median age 51 years [27–67], sex ratio 48% men): 332 historical SARS-CoV-2, 249 Alpha, 98 Beta and 59 Delta variants. Concerning the ORF1ab target gene, the Delta variant presented a VL (median 7.83 log<sub>10</sub> copies/ml [6.3–8.83]) ten time higher than the historical variants (median 6.77 [5.04–7.88]) ( $p < 0.0001$ ). A two-fold difference in the ORF1ab VL was also observed between the Delta variant and the Alpha and Beta variants (median 7.58 [5.79–8.69] and 7.42 [6.06–8.38], respectively) (Fig. 1A). For the N gene, the Delta variant (median 7.69 [6.58–8.94]) also presented a significantly higher VL (5-fold) than the historical variants (median 7.02 [5.26–8.15]) ( $p < 0.0001$ ). We also observed a significant 2.5-fold

higher difference in VL levels between the Delta variant and the Beta variant (median 7.26 [6.10–8.37]) ( $p < 0.05$ ). No statistical difference was found between the Delta and the Alpha (median 8.05 [6.13–9.08]) variants (Fig. 1B).

Our results showed significant differences of the relative VL between the Delta and the Beta and the historical variants. Indeed, the Delta variant has statistically higher nasopharyngeal VL at diagnosis than the Beta and the historical lineages. The Alpha and Delta variants had similar VL.

Further studies are required to confirm potential higher infectiousness and higher severity of the disease caused by these emerging variants. However, our study confirmed that the Delta variant presented a higher viral load, which could partially justify its rapid dominant position in France.

As previously, we focused on the relative VL in one swab per patient, which could be influenced by the variation of the nasopharyngeal swab technique. To limit sampling bias, we only collected samples from initial diagnostic swabs and we assessed Ct values using the same SARS-CoV-2 assay. We also collected samples during a variant specific target timing: we collected samples for each variant during their emergence phase.

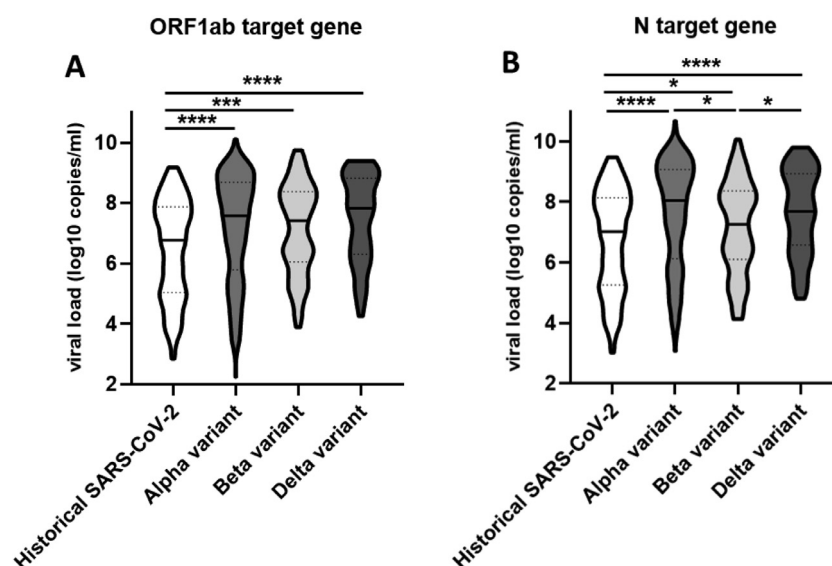
We did not observe such a huge VL difference between the Delta variant and the historical variants as the one observed with the 19A/19B lineage<sup>4</sup>. However, this difference can be explained by the fact that all the historical variants studied here presented the D614G mutation, absent from the 19A/19B lineages, which is known to confer a better infectivity to the virus<sup>6</sup>.

Unlike the Alpha and the Beta variants, the Delta variant does not harbour the N501Y mutation in the Spike (S) protein which is known in the Alpha variant to enhance the affinity for ACE2<sup>7</sup>. However, the Delta variant carries three key S mutations, L452R, T478K and P681R which confer resistance to some neutralizing monoclonal antibodies and a possibly higher transmission<sup>8</sup>. Indeed, it has been shown that the L452R mutation leads to increased infectivity, though slightly lower than with the N501Y mutation, compared to historical lineages.<sup>9</sup> Moreover, the L452R and the T478K possibly increase ACE2 binding and the stabilization of the ACE2-RBD complex and the P681R, present in the furin cleavage site, could enhance the transmissibility of the virus by its action on the S1-S2 cleavage.<sup>10</sup> These mutations confer equally to the virus a resistance to neutralizing monoclonal antibodies by disrupting their binding ability to the RBD spike<sup>10</sup> and could play a role in vaccine escape, which could explain its worldwide predominance.

Overall, our study brings evidence of increased infectivity of the Delta variant that could contribute to its fast worldwide propagation.

**Declaration of Competing Interest**

The authors declare that they have no conflict of interest.



**Fig. 1.** Delta variant, similarly to the Alpha variant, is associated with a higher viral load than Beta and historical SARS-CoV-2 variants.

The graph presents the median and the quartiles of the relative VL in log<sub>10</sub> copies/ml of the four groups for the ORF1ab gene (A) and for the N gene (B). The median of the relative VL was higher for the Delta than the Beta and the historical SARS-CoV-2 variants. \**p* < 0.05, \*\*\**p* < 0.001, \*\*\*\**p* < 0.0001.

## Acknowledgments

The authors acknowledged all the members of the Pitié-Salpêtrière, Bichat, Saint-Antoine/Trousseau and Avicenne Virology departments for their collaboration and clinicians of the four hospitals for their implication in the SARS-CoV-2 patient care. This work was supported by the Agence Nationale de la Recherche sur le SIDA et les Maladies Infectieuses Emergentes (ANRS MIE), AC43 Medical Virology and Emergen Program.

## References

1. Tang VW. Introduction of the South African SARS-CoV-2 variant 501Y.V2 into the UK. *J Infect* 2021;3.
2. Elisa T, Cathia S, Benoit V, Sidonie LN, Valentine F, Stéphane M, et al. The 501Y.V2 SARS-CoV-2 variant has an intermediate viral load between the 501Y.V1 and the historical variants in nasopharyngeal samples from newly diagnosed COVID-19 patients. *J Infect* 2021;83(1):119–45. Doi: [10.1016/j.jinf.2021.04.023](https://doi.org/10.1016/j.jinf.2021.04.023).
3. CDC. Coronavirus Disease 2019 (COVID-19). Centers for disease control and prevention. Available at <https://www.cdc.gov/coronavirus/2019-ncov/variants/variant-info.html>. Accessed July 30, 2021, 2020.
4. Viral infection and transmission in a large well-traced outbreak caused by the Delta SARS-CoV-2 variant - SARS-CoV-2 coronavirus /nCoV-2019 Genomic Epidemiology. Virological. Available at <https://virological.org/t/viral-infection-and-transmission-in-a-large-well-traced-outbreak-caused-by-the-delta-sars-cov-2-variant/724>. Accessed July 30, 2021, 2021.
5. S1267\_SPI-M-O\_Consensus\_Statement.pdf n.d. [https://assets.publishing.service.gov.uk/government/uploads/system/uploads/attachment\\_data/file/993321/](https://assets.publishing.service.gov.uk/government/uploads/system/uploads/attachment_data/file/993321/), June 2, 2021.
6. Groves DC, Rowland-Jones SL, Angyal A. The D614G mutations in the SARS-CoV-2 spike protein: implications for viral infectivity, disease severity and vaccine design. *Biochem Biophys Res Commun* 2021;538:104–7. doi: [10.1016/j.bbrc.2020.10.109](https://doi.org/10.1016/j.bbrc.2020.10.109).
7. Villoutreix BO, Vincent C, Anne-Geneviève M, Abdel-Majid K. In Silico investigation of the New UK (B.1.1.7) and South African (501Y.V2) SARS-CoV-2 Variants with a Focus at the ACE2–Spike RBD Interface. *Int J Mol Sci* 2021;22(4). doi: [10.3390/ijms22041695](https://doi.org/10.3390/ijms22041695).
8. Qianqian L, Jiajing W, Jianhui N, Li Z, Huan H, Shuo L, et al. The impact of mutations in SARS-CoV-2 spike on viral infectivity and antigenicity. *Cell* 2020;182(5):1284–1294.e9. doi: [10.1016/j.cell.2020.07.012](https://doi.org/10.1016/j.cell.2020.07.012).
9. Xianding D, A G-KM, M KM, Venice S, Candace W, Kate MM, et al. Transmission, infectivity, and neutralization of a spike L452R SARS-CoV-2 variant. *Cell* 2021;184(13):3426–3437.e8. doi: [10.1016/j.cell.2021.04.025](https://doi.org/10.1016/j.cell.2021.04.025).
10. Sarah C, Varsha P, Santosh J, Pragya Y, Nivedita G, Mousumi D, et al. SARS-CoV-2 Spike Mutations, L452R, T478K, E484Q and P681R, in the Second Wave of COVID-19 in Maharashtra. *India. Microorgan* 2021;9(7):1542. doi: [10.3390/microorganisms9071542](https://doi.org/10.3390/microorganisms9071542).

Elisa Teyssou\*

Sorbonne Université, INSERM, Institut Pierre Louis d'Epidémiologie et de Santé Publique, AP-HP, Hôpitaux Universitaires Pitié Salpêtrière - Charles Foix, laboratoire de virologie, Paris F-75013, France

Héloïse Delagrèverie

Laboratoire de Microbiologie Clinique, Hôpital Avicenne AP-HP, Université Sorbonne Paris Nord, Bobigny F-93022, France

Benoit Visseaux

Service de Virologie, Université de Paris INSERM, IAME, UMR 1137, AP-HP, Hôpital Bichat-Claude Bernard, Paris F-75018, France

Sidonie Lambert-Niclot

Sorbonne Université, INSERM, Institut Pierre Louis d'Epidémiologie et de Santé Publique, AP-HP, Hôpital Universitaire Saint Antoine, laboratoire de virologie, Paris F-75012, France

Ségolène Brichler

Laboratoire de Microbiologie Clinique, Hôpital Avicenne AP-HP, Université Sorbonne Paris Nord, Bobigny F-93022, France

Valentine Ferre

Service de Virologie, Université de Paris INSERM, IAME, UMR 1137, AP-HP, Hôpital Bichat-Claude Bernard, Paris F-75018, France

Stéphane Marot, Aude Jary, Eve Todesco

Sorbonne Université, INSERM, Institut Pierre Louis d'Epidémiologie et de Santé Publique, AP-HP, Hôpitaux Universitaires Pitié Salpêtrière - Charles Foix, laboratoire de virologie, Paris F-75013, France

Aurélien Schnuriger

CRSA INSERM UMR\_S 938, AP-HP, Laboratoire de Virologie, Hôpital Universitaire Armand-Trousseau, F-75012, Paris

Emna Ghidaoui, Basma Abdi, Sepideh Akhavan

Sorbonne Université, INSERM, Institut Pierre Louis d'Epidémiologie et de Santé Publique, AP-HP, Hôpitaux Universitaires Pitié Salpêtrière - Charles Foix, laboratoire de virologie, Paris F-75013, France

Nadhira Houhou-Fidouh, Charlotte Charpentier

Service de Virologie, Université de Paris INSERM, IAME, UMR 1137, AP-HP, Hôpital Bichat-Claude Bernard, Paris F-75018, France

Laurence Morand-Joubert

*Sorbonne Université, INSERM, Institut Pierre Louis d'Epidémiologie  
et de Santé Publique, AP-HP, Hôpital Universitaire Saint Antoine,  
laboratoire de virologie, Paris F-75012, France*

David Boutolleau

*Sorbonne Université, INSERM, Institut Pierre Louis d'Epidémiologie et  
de Santé Publique, AP-HP, Hôpitaux Universitaires Pitié Salpêtrière -  
Charles Foix, laboratoire de virologie, Paris F-75013, France*

Diane Descamps

*Service de Virologie, Université de Paris INSERM, IAME, UMR 1137,  
AP-HP, Hôpital Bichat-Claude Bernard, Paris F-75018, France*

Vincent Calvez, Anne Geneviève Marcelin, Cathia Soulie

*Sorbonne Université, INSERM, Institut Pierre Louis d'Epidémiologie et  
de Santé Publique, AP-HP, Hôpitaux Universitaires Pitié Salpêtrière -  
Charles Foix, laboratoire de virologie, Paris F-75013, France*

\*Corresponding author.

E-mail address: [elisa.teyssou@aphp.fr](mailto:elisa.teyssou@aphp.fr) (E. Teyssou)