

Table S1 Sequences of primers used for qPCR

Gene	Forward primer (5'-3')	Reverse primer (5'-3')
<i>Rn18s</i>	TTGGCAAATGCTTTCGCTC	CGCCGCTAGAGGTGAAATTC
<i>Tnf</i>	TAGCTCCAGAAAAGCAAGC	TTTTCTGGAGGGAGATGTGG
<i>Il6</i>	CCGGAGAGGAGACTTCACAG	CAGAATTGCCATTGCACAAC
<i>Timp1</i>	TTCCAGTAAGGCTGTAGC	TTATGACCAGGTCCGAGTT
<i>Timp2</i>	CTGGGACACGCTTAGCATCA	GACAGCGAGTGATCTTGAC
<i>Ccl2</i>	TCCCAATGAGTAGGCTGGAG	TCTGGACCCATTCTTCTTG
<i>Nox2</i>	AGTGCCTGTTGCTCGACAA	GCGGTGTGCAGTGTATCAT
<i>Col1a1</i>	GCTCCTGCTCCTTAGGG	GCAGAAAGCACAGCACTCG
<i>Mmp2</i>	ATGGTAAACAAGGCTTCATG	TTGAGAAGGATGGCAAGTAT
<i>Mmp8</i>	TACAGGGAACCCAGCACCTA	GGGGTTGTCTGAAGTCCATAG
<i>Mmp9</i>	CATTTCGCTGGATAAGGAGT	TCACACGCCAGAAGAATTTG
<i>Mmp13</i>	ACACTGGCAAAGCCATTTT	TTTTGGGATGCTTAGGGTTG
<i>Mmp14</i>	GCCCTGTCCAGATAAGC	ACCATCGCTCCTTGAAGACA
<i>Mmp19</i>	GTGTGGACTGTAACAGATTCAGG	CCTTGAAGAAATGAGTCCGTCGT
<i>Tgfb1</i>	CACCATCCATGACATGAACC	CAGAAGTTGGCATGGTAGCC

Table S2 List of fluorochrome-conjugated antibodies

Target	Fluorescent dye	Clone	Reference
CD3	APC	145.2.C11	eBio 17-0031-81
CD4	BV510	RM4-5	BD 561099
CD8	APC- Cy7	53-6-7	BD 557654
CD19	BV786	ID3	BD 563333
TCR	BV605	H57-597	BD 562840
FoxP3	PE	150D/E4	eBio 12-4774-42
NK1.1	PEeFluor	PK136	eBio 61-5941-80
CD11b	PE-Cy7	M1/70	BD 552850
GR1	Efluor 450	RB6-8C5	eBio 48-5931-82

All antibodies were purchased from either BD Pharmingen™ or eBioscience Thermo Fisher Scientific.

Figure 1S

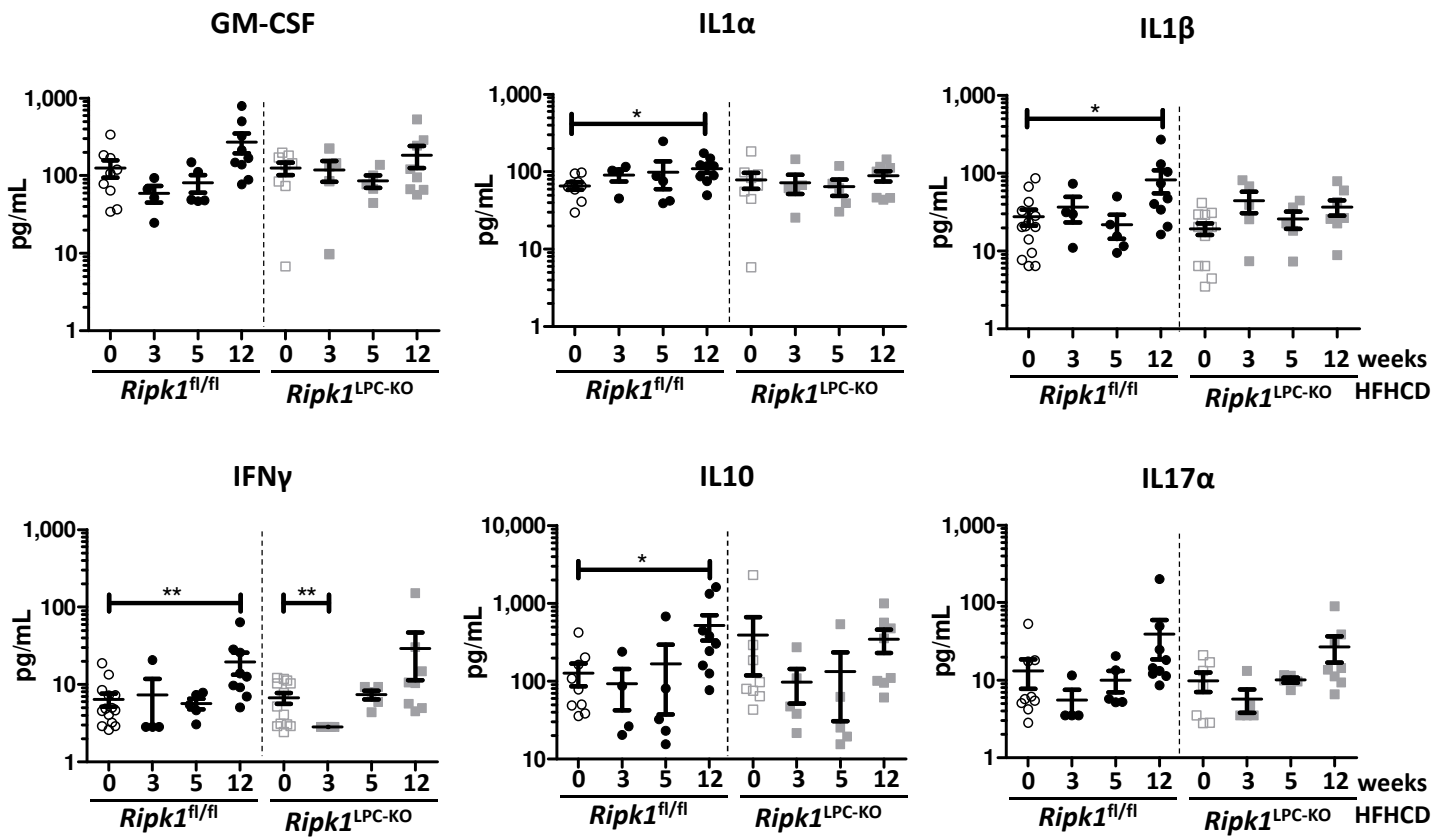


Fig. 1S Plasma concentrations of cytokines

Levels of plasma GM-CSF, IL1 α , IL1 β , IFN γ , IL10 and IL17 α . Plasma concentrations of IL23 and IL12p70 are not shown because mostly below the detection threshold. See the Material and Methods section for consideration of detection limits. For all graphs, each empty and solid black circles respectively represent *Ripk1*^{fl/fl} individuals under SD or HFHCD, while empty and solid grey squares respectively represent *Ripk1*^{LPC-KO} individuals under SD or HFHCD.

Figure 2S

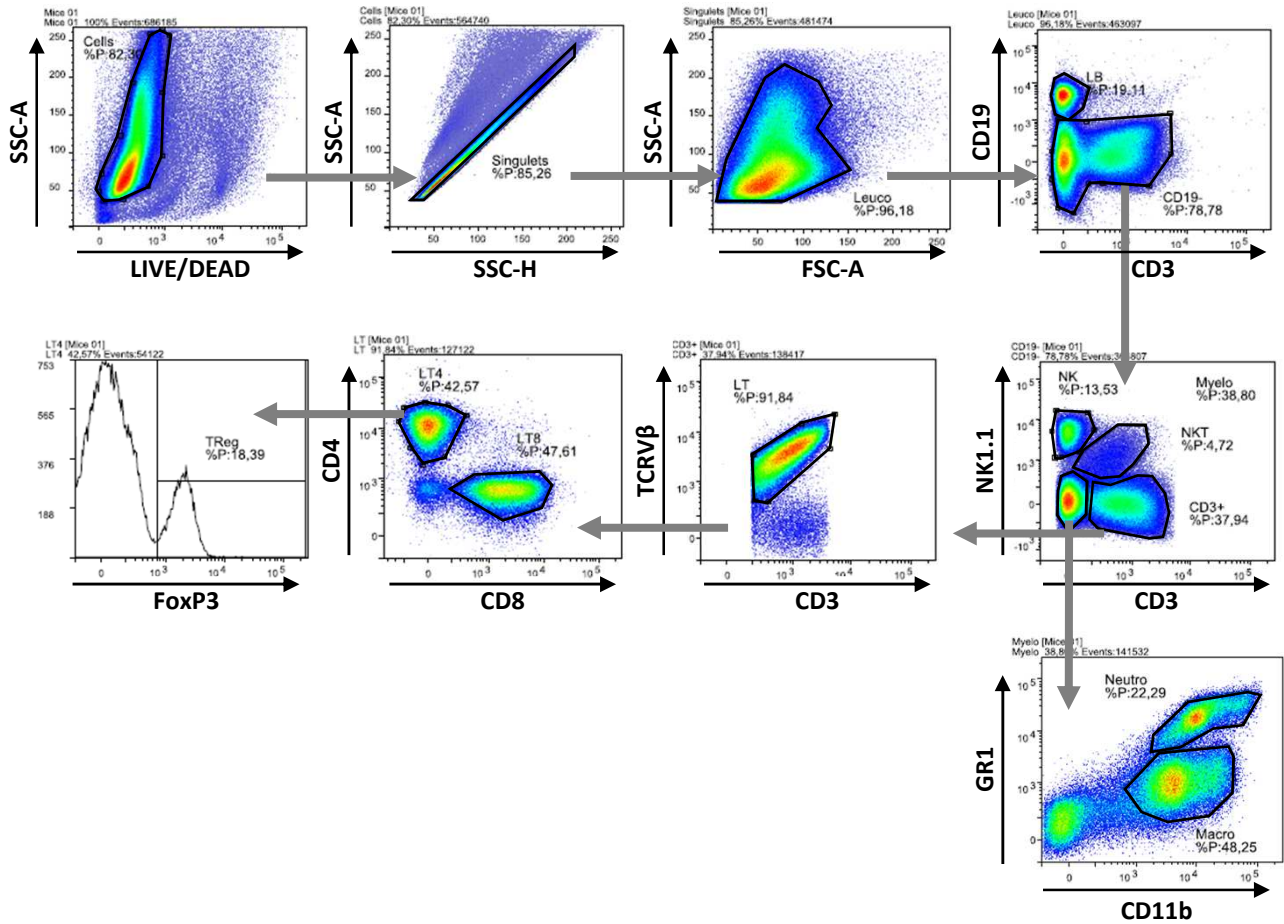


Fig. 2S Gating strategy used to identify the different populations of hepatic immune cells

Lymphocytes B (CD19+/CD3-), lymphocytes T-CD8+ (CD19-/CD3+/TCRVβ+/NK1.1-/CD8+), lymphocytes T-CD4+ (CD19-/CD3+/TCRVβ+/NK1.1-/CD4+), regulatory T cells (CD19-/CD3+/TCRVβ+/NK1.1-/CD4+/FoxP3+), NKT cells (CD19-/CD3+/NK1.1+), NK cells (CD19-/CD3-/NK1.1+), neutrophils (CD19-/CD3-/NK1.1-/GR1+/CD11b+) and macrophages (CD19-/CD3-/NK1.1-/GR1+/-/CD11b+) were first gated for singlets and on a viability marker (black arrows define x and y axes; thick grey arrows show the identification process of the immune cell populations).

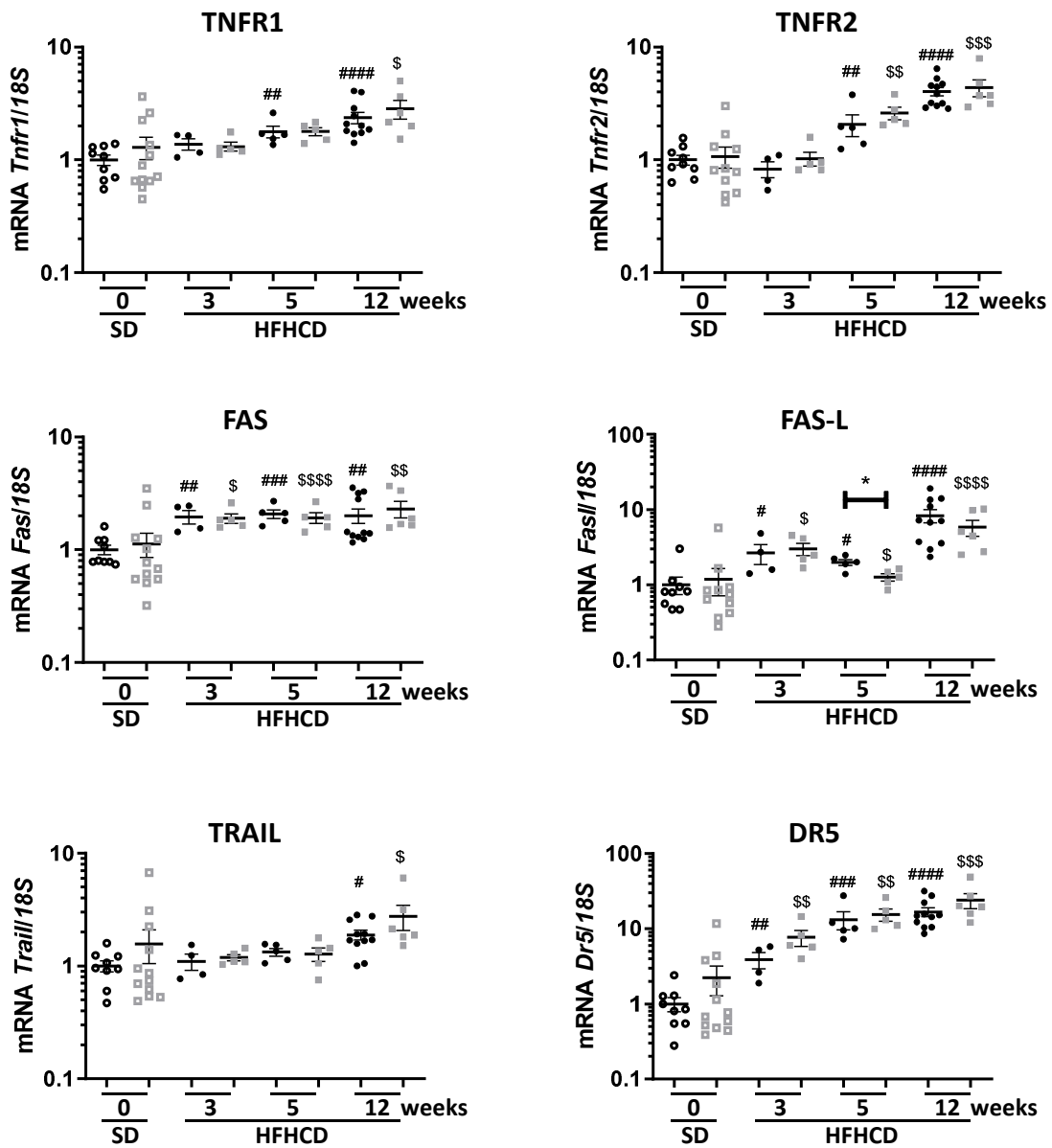


Fig. 3S Relative quantification of hepatic mRNA transcripts

Ripk1^{fl/fl} and *Ripk1^{LPC-KO}* C57B16/J male mice received either a SD (0) or a HFHCD during 3, 5 or 12 weeks. Relative levels of *Tnfr1*, *Tnfr2*, *Fas*, *Fasl*, *Trail* and *Dr5* transcripts quantified in liver tissue. For all graphs, each empty and solid black circles respectively represent *Ripk1^{fl/fl}* individuals under SD or HFHCD, while empty and solid grey squares respectively represent *Ripk1^{LPC-KO}* individuals under SD or HFHCD.