



# EDAM, life sciences ontology for data analysis and management

Lucie Lamothe<sup>1</sup>, Alban Gaignard<sup>2</sup>, Mads Kierkegaard<sup>3</sup>, Hager Eldakrouy<sup>4</sup>, Melissa Black<sup>5</sup>, Bryan Brancotte<sup>6</sup>, Jon Ison<sup>1</sup>, Veit Schwämmle<sup>3</sup>, Matúš Kalaš<sup>7</sup>, Hervé Ménager<sup>1,6</sup>, and the EDAM community

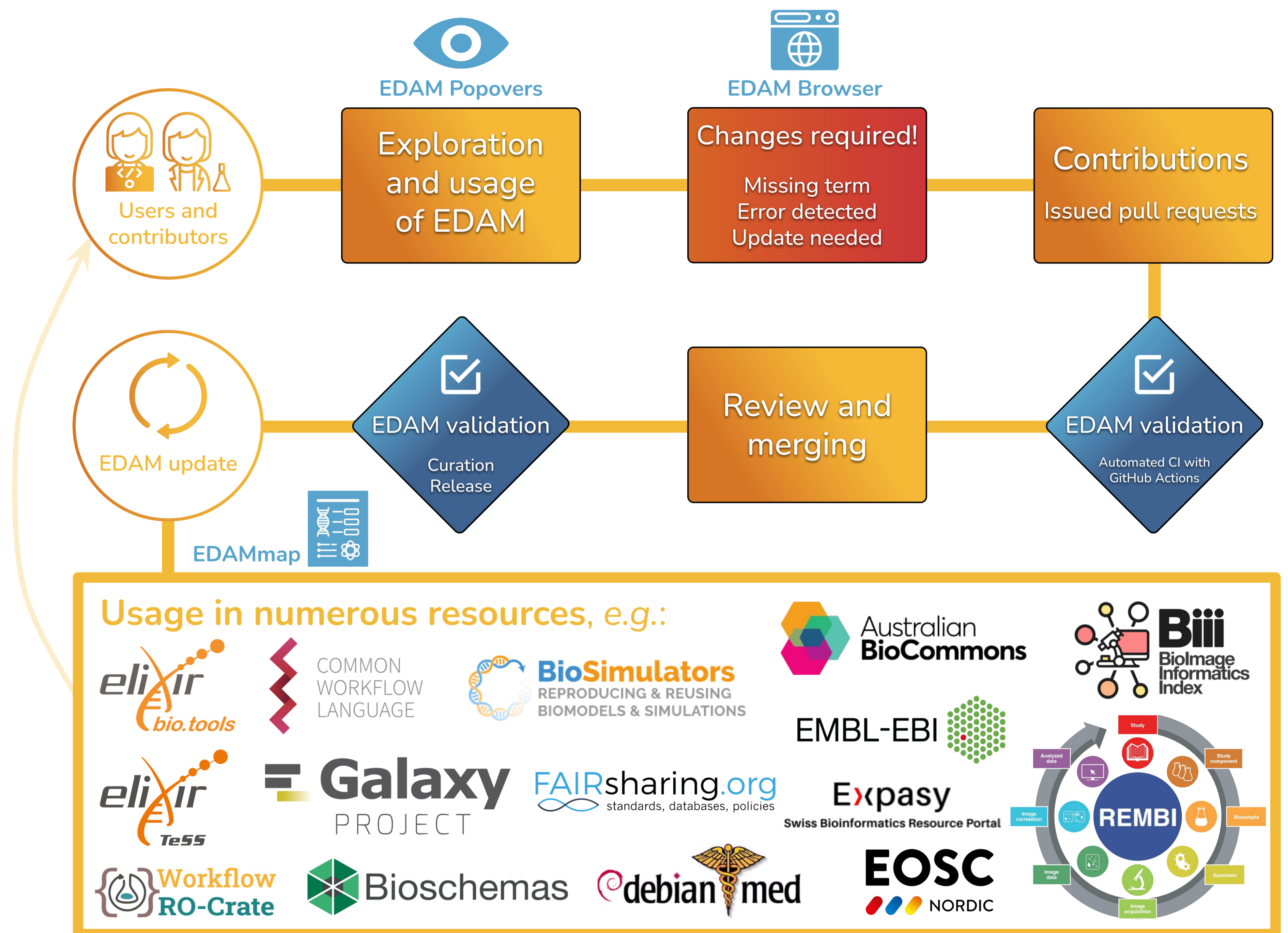
EDAM is an ontology of **data analysis** and **data management**, within and beyond life sciences. It comprises concepts related to data analysis, modelling, optimisation, and data life cycle. EDAM is a human and machine-actionable **controlled vocabulary**, used to annotate data, tools, workflows and training materials, so that they can be more **easily found, reused, and combined**.

EDAM is developed in a **participatory** and **transparent** fashion, within a broad and growing **community of contributors** from both inside and outside of ELIXIR.

Community extensions of EDAM are:

-  **EDAM Bioimaging** (including machine learning)
-  **EDAM Geo** for interdisciplinary applications, such as **global** and **planetary health**

The community-driven development comes with a set of **challenges**.

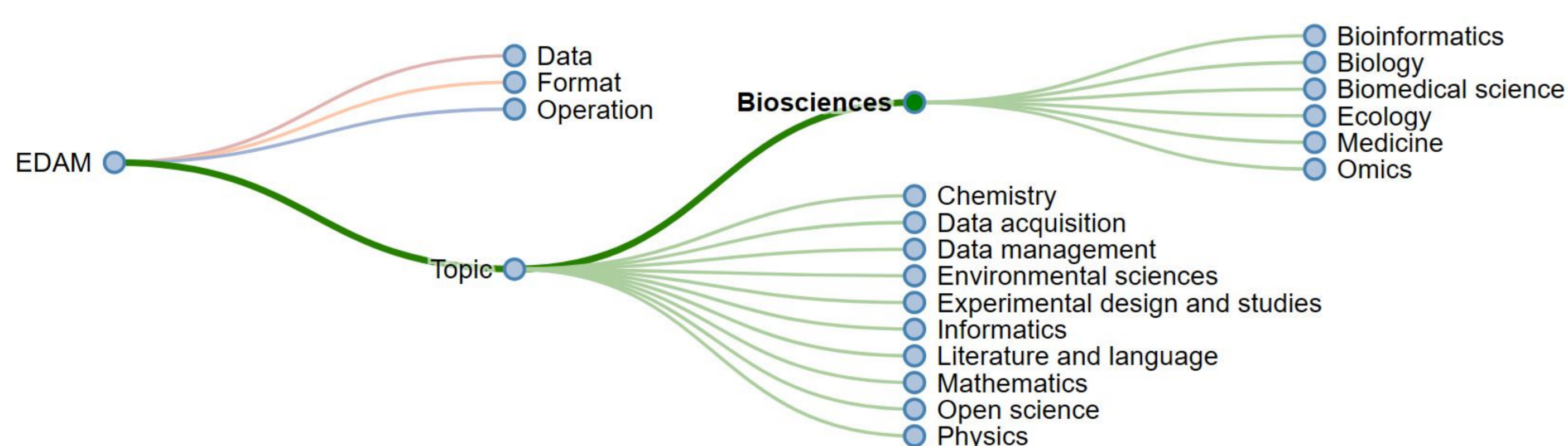


Design by Alban Sauvaille, IFB-core, ELIXIR France. Using icons from Flaticon.com

To help the community use and contribute to EDAM, a set of tools are provided:

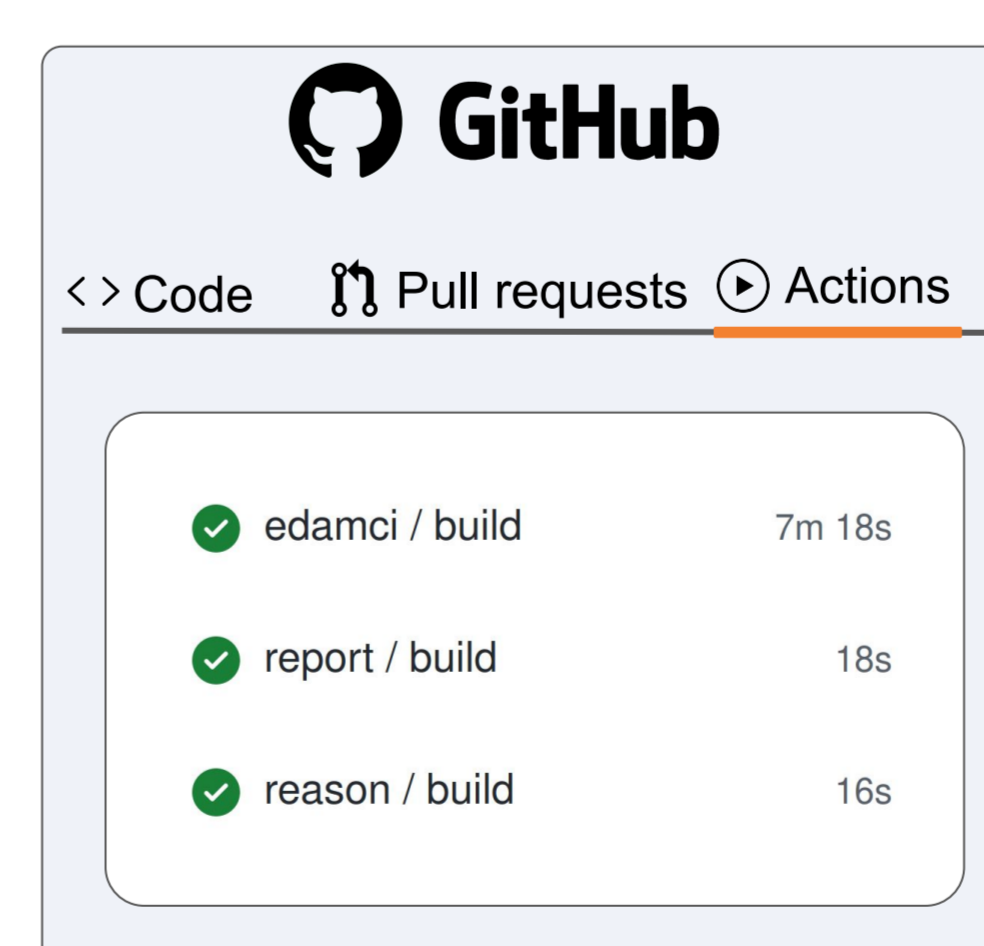
## EDAM Browser

A web interface that lets users **explore EDAM** and its usage graphically. It also allows contributors to **submit a suggestion** to the GitHub repository using a graphical user interface.



## EDAM validation

The quality-control tooling includes standard tools such as **ELK** and **ROBOT**, plus a custom validator working on both the syntactic and semantic levels. The validation tools are run by **continuous integration (CI)** workflows, using GitHub Actions. Additional tests are available for **curation**.



<sup>1</sup> CNRS, Institut Français de Bioinformatique, IFB-core, **France** (J.I. at the time of contribution)

<sup>2</sup> Nantes Université, CNRS, INSERM, L'institut du thorax, **France**

<sup>3</sup> University of Southern Denmark, Ødense, **Denmark**

<sup>4</sup> Outreachy intern (EDAM), Cairo, **Egypt** (at the time of contribution)

<sup>5</sup> Outreachy intern (EDAM), São Paulo, **Brazil** (at the time of contribution)

<sup>6</sup> Institut Pasteur, Université Paris Cité, Bioinformatics and Biostatistics Hub, **France**

<sup>7</sup> University of Bergen, **Norway**

