



Long rDNA amplicon sequencing of insect-infecting nephridiophagids reveals their affiliation to the Chytridiomycota and a potential to switch between hosts

Jürgen Strassert, Christian Wurzbacher, Vincent Hervé, Taraha Antany, Andreas Brune, Renate Radek

► To cite this version:

Jürgen Strassert, Christian Wurzbacher, Vincent Hervé, Taraha Antany, Andreas Brune, et al.. Long rDNA amplicon sequencing of insect-infecting nephridiophagids reveals their affiliation to the Chytridiomycota and a potential to switch between hosts. Scientific Reports, 2021, 11 (1), pp.396. 10.1038/s41598-020-79842-6 . hal-03701902

HAL Id: hal-03701902

<https://hal.science/hal-03701902>

Submitted on 10 Jan 2024

HAL is a multi-disciplinary open access archive for the deposit and dissemination of scientific research documents, whether they are published or not. The documents may come from teaching and research institutions in France or abroad, or from public or private research centers.

L'archive ouverte pluridisciplinaire **HAL**, est destinée au dépôt et à la diffusion de documents scientifiques de niveau recherche, publiés ou non, émanant des établissements d'enseignement et de recherche français ou étrangers, des laboratoires publics ou privés.



OPEN

Long rDNA amplicon sequencing of insect-infecting nephridiophagids reveals their affiliation to the Chytridiomycota and a potential to switch between hosts

Jürgen F. H. Strassert¹ , Christian Wurzbacher² , Vincent Hervé³ , Taraha Antany¹, Andreas Brune³ & Renate Radek¹

Nephridiophagids are unicellular eukaryotes that parasitize the Malpighian tubules of numerous insects. Their life cycle comprises multinucleate vegetative plasmodia that divide into oligonucleate and uninucleate cells, and sporogonial plasmodia that form uninucleate spores. Nephridiophagids are poor in morphological characteristics, and although they have been tentatively identified as early-branching fungi based on the SSU rRNA gene sequences of three species, their exact position within the fungal tree of life remained unclear. In this study, we describe two new species of nephridiophagids (*Nephridiophaga postici* and *Nephridiophaga javanicae*) from cockroaches. Using long-read sequencing of the nearly complete rDNA operon of numerous further species obtained from cockroaches and earwigs to improve the resolution of the phylogenetic analysis, we found a robust affiliation of nephridiophagids with the Chytridiomycota—a group of zoosporic fungi that comprises parasites of diverse host taxa, such as microphytes, plants, and amphibians. The presence of the same nephridiophagid species in two only distantly related cockroaches indicates that their host specificity is not as strict as generally assumed.

Insects are the most diverse group of all animals. So far, about one million species have been described and recent estimates for extant species range from 2.6 to 7.8 million^{1,2}. They are globally distributed and impact human life at numerous levels. In agriculture, for instance, insects play a major role as both pollinators (e.g., honey bees) and pests that feed on crops (e.g., grasshoppers). Other pest insects live parasitic (e.g., lice) and/or transmit parasites and diseases (e.g., mosquitoes, cockroaches). Among the unicellular eukaryotes that infect insects, alveolates (apicomplexans, ciliates), amoeba, trypanosomes, and microsporidians are frequently found³. Nephridiophagids represent a further unicellular eukaryote group of insect parasites^{4–7}. First discovered in honey bees (formal description of the genus *Nephridiophaga*)⁵, they are mainly known from cockroaches and beetles⁸. They infect the Malpighian tubules where especially the lumen can be densely colonised by different life cycle stages⁹. The life cycle of nephridiophagids consists of a vegetative phase with multinucleated plasmodia that multiply by division into oligonucleate and uninucleate cells, and a sporogenic phase with plasmodia that form uninucleate 5–10 µm long spores. Mature spores have a thick chitinous wall and are released with the feces of the host insects enabling infection of further individuals by oral uptake^{9,10}.

The phylogenetic affiliation of nephridiophagids, which are poor in morphological characteristics, has been heavily debated and is far from being resolved^{5,9,11–13}. Classifications of this taxon to diverse groups such as Microsporidia or Haplosporidia exemplify this controversy^{11,13–15}. Only the molecular phylogenetic analysis of the small subunit ribosomal RNA (SSU rRNA) gene of one *Nephridiophaga* species (*N. blattellae*) in 2004 could

¹Evolutionary Biology, Institute for Biology/Zoology, Free University of Berlin, Berlin, Germany. ²Chair of Urban Water Systems Engineering, Technical University of Munich, Garching, Germany. ³Research Group Insect Gut Microbiology and Symbiosis, Max Planck Institute for Terrestrial Microbiology, Marburg, Germany. ✉email: strassert@zedat.fu-berlin.de; radek@zedat.fu-berlin.de

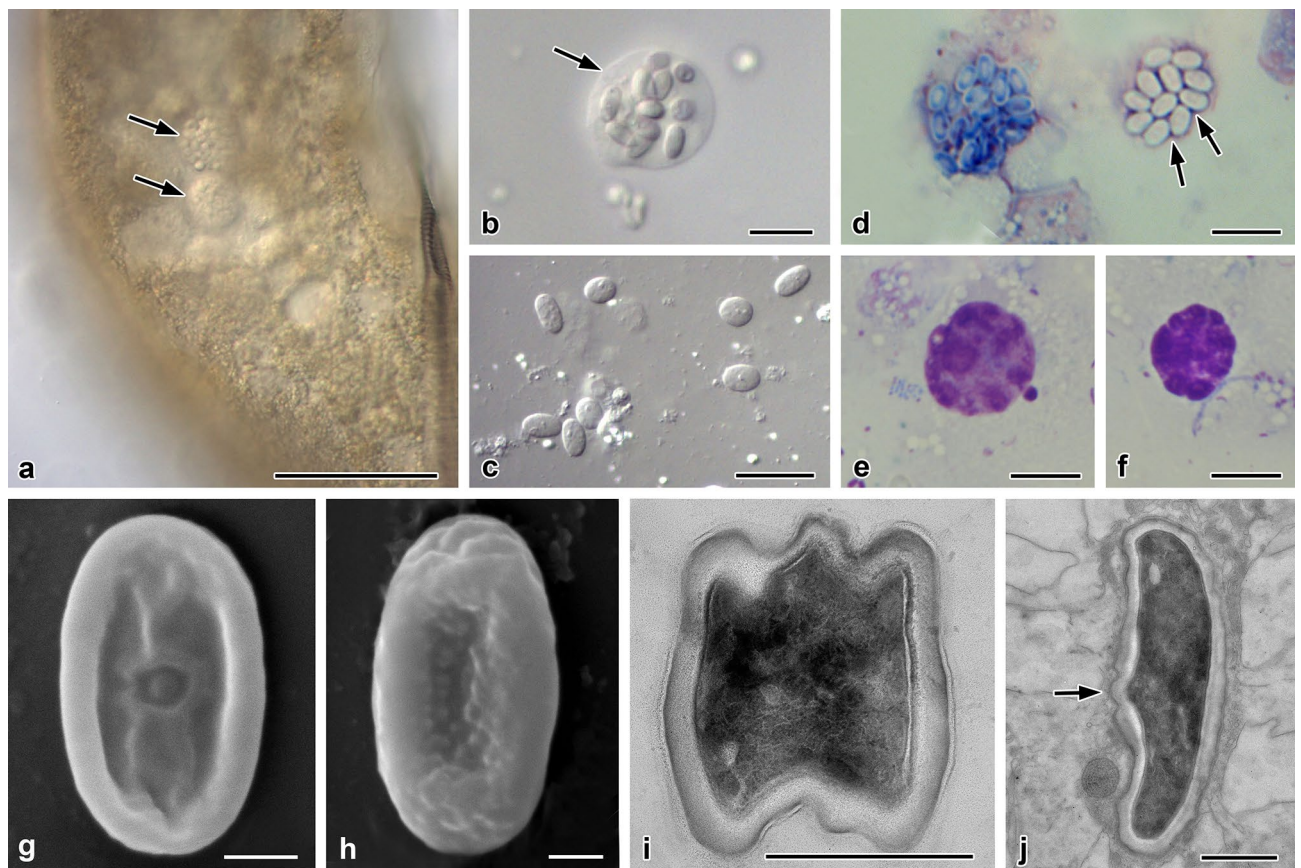


Figure 1. *Nephridiophaga postici* sp. nov. from *Eublabeus posticus*. (a) Infected Malpighian tubule containing sporogenic plasmodia (arrows). (b) Sporogenic plasmodium. Arrow points to plasma membrane of plasmodium. (c) Single spores. (d–f) Giemsa staining. (d) Left plasmodium with sporoblasts, right with mature spores. Arrows point to vegetative nuclei. (e,f) Vegetative plasmodia with stained nuclei. (g,h) Scanning electron micrographs of dorsal (g) and ventral (h) side of flattened, mature spores. (i,j) Ultra-thin sections. (i) Mature spore in cross-section. (j) Mature spore in longitudinal section. Arrow points to region of spore opening. Multilayered spore wall. Scale bars: (a) = 50 µm, (b–f) = 10 µm, (g–j) = 1 µm.

shed light on the fungal nature of this parasite, although with only moderate statistical support¹⁶. Recently, the SSU rRNA gene sequence analysis of two further *Nephridiophaga* species (*N. blaberi*, *N. maderae*) confirmed the affiliation of nephridiophagids to the fungi but failed to safely assign them to any existing group¹⁷.

It is generally assumed that nephridiophagids are highly host-specific. Feeding of nephridiophagid spores from one cockroach species to another nephridiophage-free species did not lead to a successful transmission⁹. However, it needs to be noted that cockroaches donating and receiving nephridiophagids were fairly distantly related belonging to different families^{9,18}. Whether the intimate association of host and parasite resulted in a cospeciation between the two partners, as it has been documented for other symbiotic relationships^{19–23}, is currently unknown and awaits investigation.

In the present study, we screened putative nephridiophagid hosts for infections. Subsequently, we used long-read sequencing of the rDNA operon of various nephridiophagid species (two of them formally described here) in order to increase and analyse the phylogenetic signal for this enigmatic group, and to define its position in the fungal tree. We additionally inferred the molecular phylogeny of the host insects from their cytochrome *c* oxidase subunit II (COII) gene sequences, and—by comparing host and parasite phylogeny—discuss the potential for a cospeciation between the two partners.

Results

Morphology of *Nephridiophaga postici* sp. nov. and *Nephridiophaga javanica* sp. nov.. Life cycle stages and morphological features of the two *Nephridiophaga* species from *Eublabeus posticus* (*Nephridiophaga postici*; Fig. 1) and *Elliptorhina javanica* (*Nephridiophaga javanica*; Fig. 2) resemble each other. Developmental stages occur in the lumen of the Malpighian tubules (Fig. 1a). The most prominent stages are the sporogenic plasmodia, which include different numbers of spores (Figs. 1a,b,d, 2a–d). Vegetative plasmodia can be recognised in Giemsa stained smears by the possession of multiple nuclei (Fig. 1e,f). The mostly spherical, sometimes elongated sporogenic plasmodia of *N. postici* measure 16.5–34.4 × 13.6–22.0 µm (mean 23.9 × 18.1 µm; *n* = 9) and contain 11–38 (mean 22; *n* = 21) spores. The sporogenic plasmodia of *N. javanica* measure 14.2–22.7 × 12.9–20.3 µm (mean 18.8 × 16.5 µm; *n* = 22) and include 11–21 (mean 15.6; *n* = 22) spores. Between the

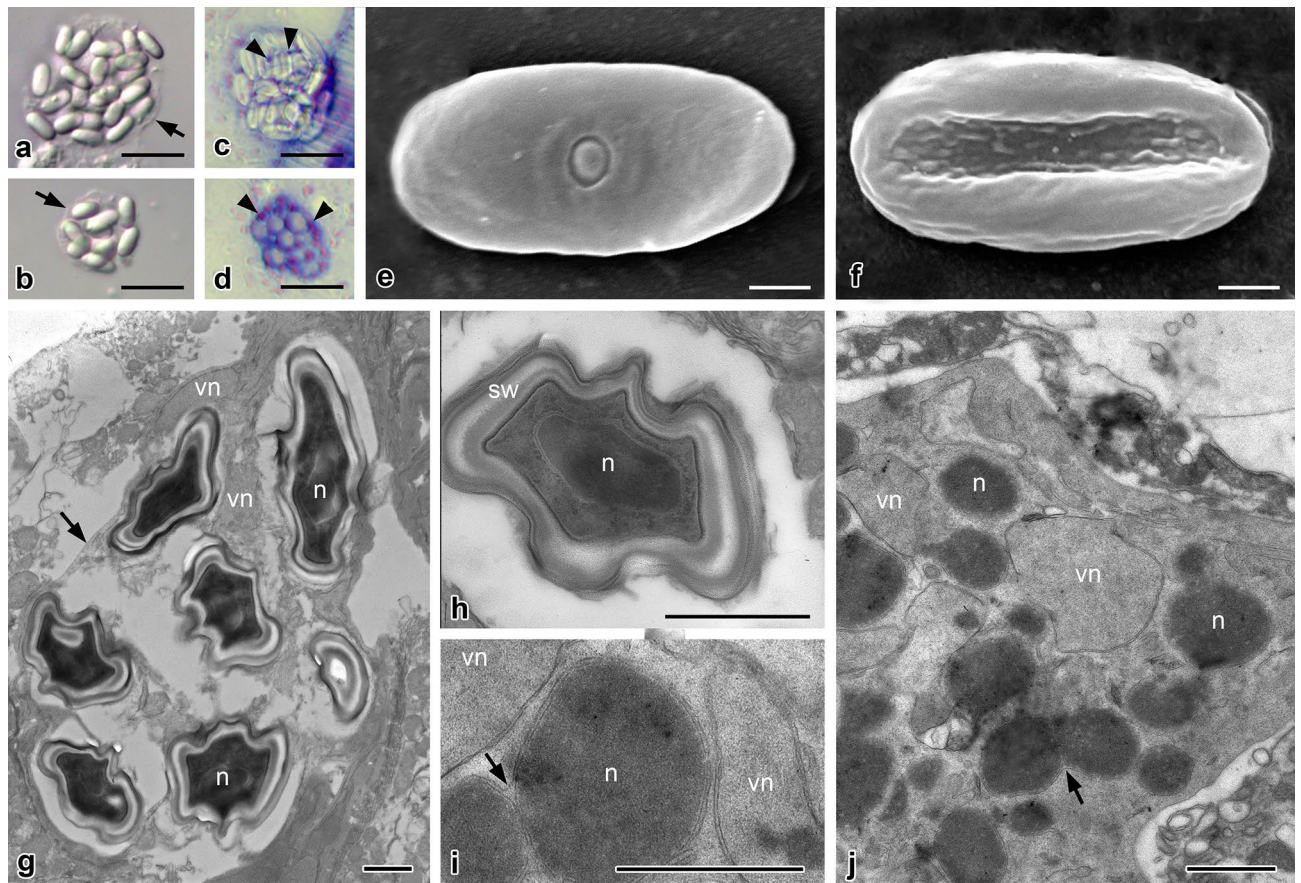


Figure 2. *Nephridiophaga javanica* sp. nov. from *Elliptorhina javanica*. (a,b) Sporogenic plasmodia including different numbers of mature spores. Arrows point to plasma membranes of the plasmodia. (c,d) Giemsa staining reveals vegetative nuclei (arrowheads) of sporogenic plasmodia. (e,f) Scanning electron micrographs of dorsal (e) and ventral (f) side of flattened, mature spores. Dorsal side with central cap of spore opening. (g–j) Ultra-thin sections. (g) Sporogenic plasmodium with electron-dense mature spores and vegetative nuclei (vn). Spores contain one nucleus (n). Arrow points to plasma membrane of plasmodium. (h) Mature spore in cross-section. Spore wall (sw) consists of several layers. (i,j) Vegetative plasmodia with vegetative electron-light nuclei (vn) and prospective electron-dense spore nuclei (n). Arrows point to division or fusion of electron-dense nuclei (note outer membrane surrounding both nuclei). Scale bars: (a–d) = 10 μ m, (e–j) = 1 μ m.

spores, residual vegetative nuclei of the mother plasmodia are visible (Figs. 1d, 2c,d). Single mature spores are flattened, oval-shaped (Fig. 1c), and measure $5.0\text{--}7.0 \times 2.6\text{--}3.8$ μ m (mean 5.9×3.2 μ m; $n = 52$) in *N. postici* and $5.3\text{--}7.1 \times 2.7\text{--}3.8$ μ m (mean 6.4×3.3 μ m; $n = 42$) in *N. javanica*.

Scanning electron microscopy revealed flattened spores with a thickened rim (Figs. 1g,h, 2e,f). One side possesses a small, central cap (spore opening; Figs. 1g, 2e; the dorsal side according to Radek and Herth⁸) while the other (ventral) side misses such a structure but shows tiny bulges. Longitudinal folds may occur as preparation artifact during drying (Figs. 1g, 2f). Between the electron-dense mature spores of sporogenic plasmodia, residual vegetative nuclei are seen in ultra-thin sections (Fig. 2g). Mature spores contain one central nucleus (Fig. 2g, h). The spore walls are thick at the rim and thinner at the flat sides and the spore opening (Fig. 1j). They consist of several layers (Figs. 1i,j, 2g,h); in addition to outer and inner biomembranes, the outer and inner layers of the wall are electron-dense and the zone in-between has a moderate electron density. Before visible spores are formed within a plasmodium, two types of nuclei develop, which differ by electron density (Fig. 2i,j). Since the residual vegetative nuclei in mature sporogenic plasmodia are electron-light (Fig. 2g), the electron-light nuclei in young sporogenic plasmodia (Fig. 2i,j) most likely also represent vegetative nuclei while the dense forms represent the future spore nuclei.

Whereas the described morphological characteristics of *N. postici* and *N. javanica* were less discriminative, our molecular phylogenetic analyses (below) confirmed that they are two distinct species.

Affiliation of nephridiophagids to Chytridiomycota. To place nephridiophagids within the fungal tree of life, we incorporated all major fungal groups in our analyses. The phylogenetic tree (Fig. 3) inferred from a concatenated alignment of SSU and LSU rRNA genes reveals overall good support for the diverse phyla (for a current overview, see Wijayawardene et al.²⁴). Nephridiophagids fall into the phylum Chytridiomycota, branching as sister to species that belong to the Cladochytriales (support 89%, 95%, 0.89; see Fig. 3). This topology is

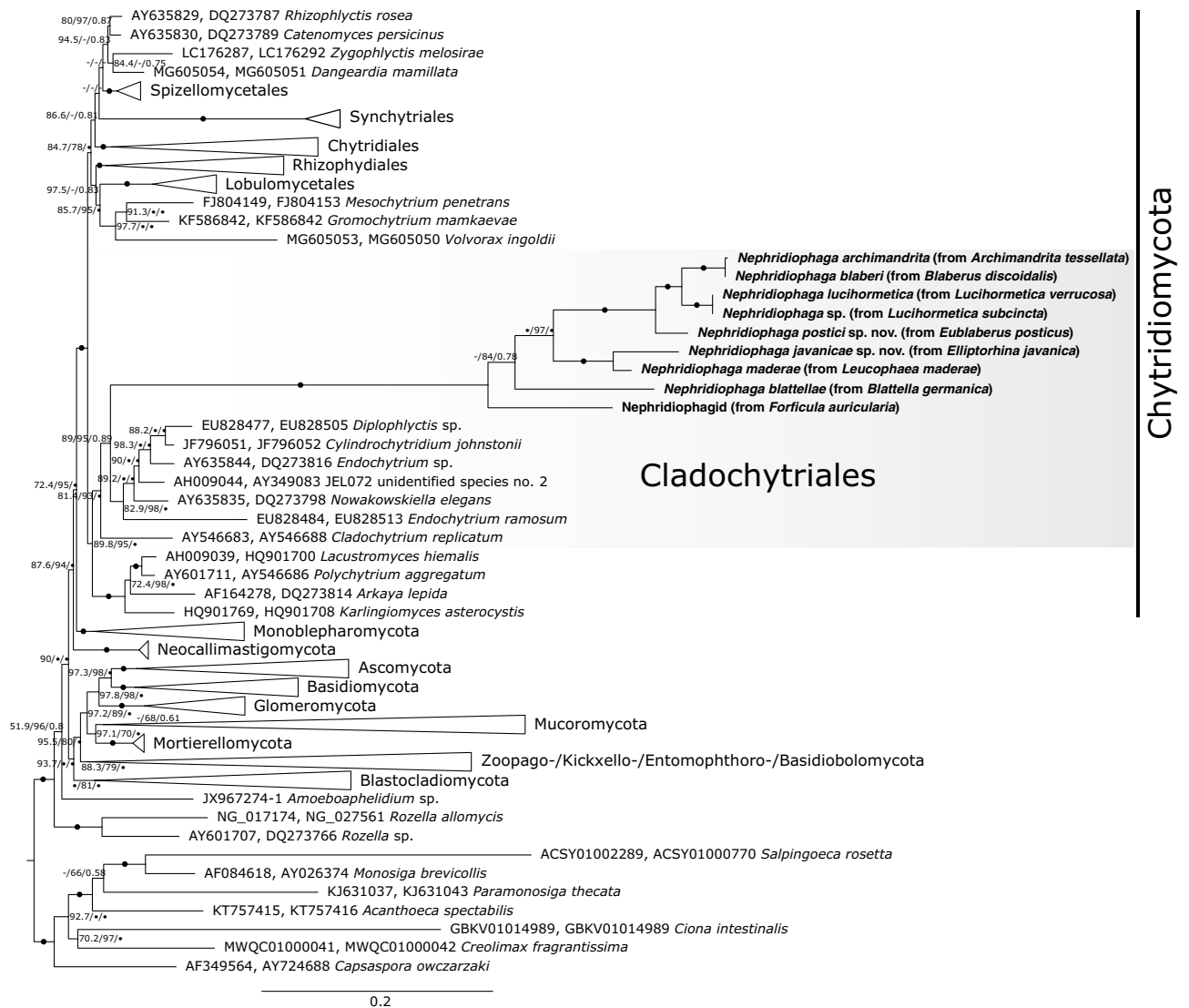


Figure 3. Phylogenetic tree inferred from a concatenated alignment of SSU and LSU rRNA genes under the GTR + F + I + G4 model. Branch support is given by SH-aLRT/UFBoot2/Bayesian posterior probabilities. Black circles indicate support values $\geq 99\%$ or ≥ 0.9 , and dashes indicate values $< 50\%$ or < 0.5 . Black circles at branches show $\geq 99\%$ and ≥ 0.9 support in all analyses. Sequences obtained in this study are marked in bold. Note, for nephridiophagids obtained from *Luciormetica* spp. and *Archimandrita tessellata* only SSU rRNA gene sequences have been used for tree inference. See Supplementary Data for taxa of collapsed clades.

also supported by the approximately unbiased test ($p = 1$), whereas alternative hypotheses of a sister relationship of nephridiophagids to (i) Mucoro-/Mortierellomycota, (ii) Zoopago-/Kickxello-/Entomophthoro-/Basidiobolomycota, and (iii) *Rozella* are all rejected ($p = 0$). These alternative topologies were tested as an affiliation of nephridiophagids to the—meanwhile as paraphyletic classified—Zygomycota or to the Rozellomycota has been hypothesised elsewhere (without statistical support though)^{16,25}.

Monophyly of nephridiophagids was fully supported in all analyses. In addition to the here two formally described species, *Nephridiophaga postici* and *Nephridiophaga javanica*, sequence data was obtained from further, so far only morphologically characterised nephridiophagids. They all branch with high support in close proximity to the only three *Nephridiophaga* species represented by both molecular and morphological data (*N. blattellae*, *N. blaberi*, and *N. maderae*)^{4,8,9,17,26}, confirming their assignment to the genus *Nephridiophaga*. The only exception from this is the nephridiophagid isolated from the European earwig *Forficula auricularia*, which is more distantly related ($\sim 8\%$ SSU rRNA gene sequence divergence) and branches as sister to the *Nephridiophaga* cluster (Fig. 3).

Host specificity. To check for strict host specificity and the resulting potential for cospeciation of the host insects and their fungal parasites (i.e., for congruency of their phylogenies), we reconstructed the phylogenetic relationships between the insects that harbor nephridiophagids (Fig. 4). Despite the fact that several nodes of the host tree remained rather inconclusive, it is conspicuous that the topology of the early-branching lineages

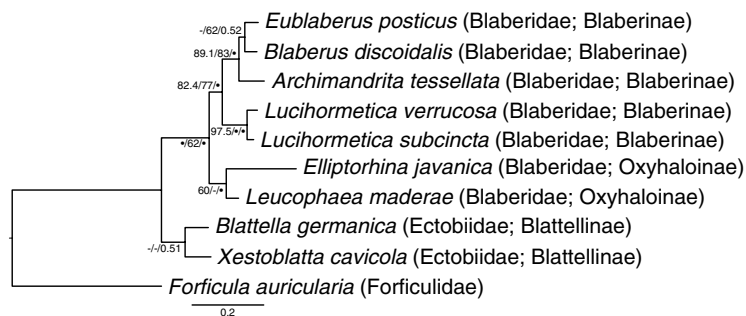


Figure 4. Phylogenetic tree of the host taxa inferred from the deduced amino acid alignment of the mitochondrial cytochrome *c* oxidase II. The topology is based on maximum-likelihood and Bayesian analyses (see “Methods”), and branch support is given by SH-aLRT/UFBoot2/Bayesian posterior probabilities. Black circles indicate support values $\geq 99\%$ or ≥ 0.9 , and dashes indicate values $< 50\%$ or < 0.5 . The amino acid sequence of *Xestoblatta cavicola* has been added to sustain the sister-relationship of Blattellinae and Blaberidae¹⁸. The tree is rooted on *Forficula auricularia* (Dermaptera).

(*F. auricularia*, *B. germanica*, *L. maderae*, and *E. javanica*) mirrors the topology of their respective parasites (see Figs. 3 and 4). However, even without further testing a strict host specificity or even cospeciation of the two partners in general cannot be confirmed, not only because of the distinct branching of *E. posticus* in a more apical clade (compare Figs. 3 and 4) but also because we detected virtually identical *Nephridiophaga* sequences obtained from both *A. tessellata* and *B. discoidalis* (Fig. 3; $> 99.8\%$ SSU rRNA gene sequence identity; ITS/LSU data was not available for *Nephridiophaga archimandrita*).

Discussion

Although the fungal character of nephridiophagids has been revealed more than 15 years ago¹⁶, their phylogenetic affiliation to a certain fungal phylum remained enigmatic. Based on SSU rRNA gene sequence analyses, relationships either to the Zygomycota^{16,27} or close to the root of the fungal kingdom¹⁷ have been proposed. In this study, we increased the phylogenetic signal by analysing both the SSU and LSU rRNA gene sequences of numerous, partly newly described species. Our results show that nephridiophagids belong to the phylum Chytridiomycota (also known as “chytrids”).

Phylogenetic assignment. Nephridiophagids show only a few morphological characteristics hampering their classification based on microscopic studies. The here newly described species, *Nephridiophaga postici* and *Nephridiophaga javanicae*, resembled the general morphology of other *Nephridiophaga* species concerning the shape and size of spores and vegetative and sporogenic plasmodia, as well as the number of spores in a sporogenic plasmodium (summarised by Radek et al.⁷). Thus, due to transitions between these features among different nephridiophagid species and the fact that the same species can infect two different host species (see below), we propose that molecular markers will additionally be considered in future classifications.

Our phylogenetic analyses of a concatenated SSU/LSU rRNA gene alignment corroborated the novel species character of *N. postici* and *N. javanicae* and, moreover, allowed an unambiguous assignment of nephridiophagids to the Chytridiomycota. The consideration of the LSU rRNA gene has previously been shown to boost the phylogenetic power in tree inferences, allowing to untangle the diversification not only of early-branching fungi^{28–32} but in addition with the SSU also of other clades such as dinoflagellates or even higher-ranking and deep-branching groups^{33,34}. Here, nephridiophagids fell into the fully supported Chytridiomycota clade. Their further affiliation to the Cladochytriales remains less definite as the node in question did not yield maximal statistical support (although SH-aLRT, UFBoot2, and Bayesian PP were all in a range that typically confirms a certain clade^{35–37}; Fig. 3). Note that for the used ultrafast bootstraps, which provide more unbiased branch supports than standard bootstraps, a reliability threshold of $\geq 95\%$ is recommended³⁷. The long stem of the nephridiophagids, however, does not automatically reflect phylogenetic distance to the other Cladochytriales species but rather underlines their rapidly-evolving character, which is frequently observed in parasitic eukaryotes^{38–41}. Also, the parasitic life style and the lack of flagellated zoospores in nephridiophagids do not necessarily justify an exclusion from the Cladochytriales. Though members of this order show a characteristic zoospore ultrastructure⁴² and inhabit aquatic habitats and moist soils where they grow on decaying plant material^{42,43}, all different kind of aquatic and terrestrial environments and life styles (saprophytic, parasitic, saprophytic/parasitic) have been documented within numerous unrelated chytrid orders [e.g.,^{44–49}], indicating that parasitism has evolved several times independently in this group. Similarly, the absence of flagellated zoospores is likely phylogenetically less informative but denotes a secondary loss in adaptation to an endoparasitic lifestyle and a passive spore transmission via the oral uptake of feces. Although most parasitic lineages (infecting algae, land plants, fungi or reptiles) still possess free-swimming zoospores that settle on a potential host, losses of flagella have been reported for some non-related groups within chytrids and also monoblepharomycetes and other early-branching fungi such as microsporidians—especially when the life cycle is endoparasitic in all stages^{30,50–52}.

Host specificity. Nephridiophagids have long been assumed to be host-specific. Indeed, feeding spores from one cockroach species to another nephridiophage-free cockroach species did not lead to new infections in transmission experiments⁹. In these studies, however, closely related hosts (belonging to the same family) were not tested. Due to the shared and inconspicuous morphology of nephridiophagids, addressing the question of host specificity solely based on microscopic studies is difficult, but so far, molecular markers (SSU rRNA gene sequences) were known only for three *Nephridiophaga* species^{16,17}. Our molecular phylogenetic studies allowed the detection of the same *Nephridiophaga* phylotype in the cockroaches *Archimandrita tessellata* and *Blaberus discoidalis*. The nephridiophagids of these two hosts have previously been treated as separate species described as *Nephridiophaga archimandrita* (lacking molecular data⁷) and *Nephridiophaga blaberi* (with published SSU rRNA gene sequence^{4,17}). In this context, it is noteworthy that both Fabel et al.⁴ and Radek et al.¹⁷ misidentified the host of *N. blaberi* as *Blaberus craniifer*. Here, we tested the identity of this cockroach (from the same source mentioned in the two studies) based on its mitochondrial COII gene sequence, and we correct as follows: the host of *N. blaberi* is *B. discoidalis* (occasionally named as “false death’s head cockroach”) and not the similar looking *B. craniifer* (death’s head cockroach). Considering their identical SSU rRNA gene sequences, we further suggest to synonymise the described species *N. archimandrita* and *N. blaberi* upon the original host can be identified.

The presence of the same nephridiophagid phylotype in two different cockroach species shows that a transmission is generally possible—at least temporarily and between closely related species. Here, both host species were affiliated to the subfamily Blaberinae. We hypothesise that the observed horizontal transfer is a consequence of maintaining the cockroaches in the same cultural area at our institute and at the German Environment Agency (from where they were obtained) for many years. Although not tested, taking into account the high numbers of spores and sporangia found in microscopic observations, we believe that the nephridiophagid phylotype in question became a permanent parasite of both cockroach species, *A. tessellata* and *B. discoidalis*. Whether one of the two hosts was primarily free of *Nephridiophaga* infection or whether one *Nephridiophaga* species has been substituted by another is currently unclear. A release of selection pressure and lower microbiome diversity in laboratory animals may facilitate the colonisation of opportunistic infections. Thus, it is speculative to what extent horizontal nephridiophagid transfer can be observed outside the laboratory. Partial congruence of the phylogenetic trees of hosts and parasites implies that parasite exchange did not happen between the early-branching, more distantly-related host insects (Figs. 3 and 4). However, if this observation is simply caused by their different distribution needs to be investigated in future studies. The parasites’ life cycle, which includes a release of spores with the host feces and new infection by their oral ingestion, enables an easy interspecific transfer. Yet, if this then leads to a permanent infection presumably depends on the degree to which the parasite evolved host-specific adaptations over time (as shown for many other symbiont/host systems^{19–23,53,54}). Our observations give rise to believe that nephridiophagids are less host-specific than generally assumed excluding a strict cospeciation with their host insects. This is also in line with the scattered presence of these parasites even within a certain family of diverse insects (Supplementary Table S1).

General notes. To date, most *Nephridiophaga* species have only been described by a few morphological features such as spore size, the number of spores per sporogenic plasmodium, and the habitat for spore formation (in the lumen or exceptionally within the epithelial cells of the Malpighian tubules)⁴. Since in general, the stages of different species look very similar, the presumed host specificity was traditionally used as further criterion for delimitating new species—a distinguishing trait that is no longer recommended by our findings. Here, we described two new *Nephridiophaga* species based on both, morphology and molecular phylogeny. SSU and LSU rRNA gene sequences have been obtained from several further nephridiophagids, among them a species from an earwig, which has morphologically been described as *Nephridiophaga forficulae*⁶ but possibly represents a further genus of nephridiophagids. We did not find the type species *Nephridiophaga apis*, but considering the genetic distance between *N. forficulae* and cockroach-infecting nephridiophagids, it is possible that *N. apis* is even more distantly related to most of the described nephridiophagids—a discovery that would challenge their assignment to the genus *Nephridiophaga*.

Although the described methods enabled us to obtain sequence data, which allowed an assignment of nephridiophagids to the Chytridiomycota, it needs to be mentioned that the protocol will require some modifications. Whereas it worked fine for host individuals that were highly infected by nephridiophagids, only a few reads were obtained for less infected individuals, hindering the generation of reliable consensus sequences. We tested annealing temperatures of 55 °C and 57 °C for the long-range PCRs. Yet, for both settings the majority of reads belonged either to the host insect or other fungi such as yeasts. As the primers span the SSU, ITS1, 5.8S, ITS2, and a long part of the LSU rRNA gene, they are not too easy to replace. We therefore suggest trying even higher annealing temperatures and/or—where possible—to increase the ratio of target cells by for example micromanipulation or centrifugation in future studies. In combination with genome amplification or other techniques, the latter could also facilitate the sequencing of numerous further genes that can be used for tree inference. An approach, which will become favourable as soon as more diverse chytrid genomes/transcriptomes become publicly available.

Taxonomy. *Nephridiophaga postici* Strasser and Radek sp. nov.. Registration identifier MycoBank No. MB837477.

Diagnosis Flattened, oval to elongate, uninucleate spores measuring 5.0–7.0 × 2.6–3.8 µm (mean 5.9 × 3.2 µm; n = 52) in fresh preparations. 11–38 (mean 22; n = 21) spores per sporogenic plasmodium. Sporogenic plasmodia mostly spherical, sometimes elongated, measuring 16.5–34.4 × 13.6–22.0 µm (mean 23.9 × 18.1 µm; n = 9).

Holotype A Giemsa-stained smear with slide number 2020/14 was deposited in the Upper Austrian Museum in Linz, Austria.

Distribution/host locality Cockroach hosts are cultured at the insectarium of Aquarium Berlin, Berlin, Germany. *E. posticus* is native to Central and South America.

Ecology Infection of the host by oral ingestion of spores. Life cycle stages develop in the Malpighian tubules. Spores released via the feces.

Etymology and host Named after its host *Eublabeus posticus* Erichson, 1848.

Gene sequence rDNA operon acc. no. MW018148.

Nephridiophaga javanicae Strasser and Radek sp. nov.. Registration identifier MycoBank No. MB837478.

Diagnosis Flattened, oval to elongate, uninucleate spores measuring $5.3\text{--}7.1 \times 2.7\text{--}3.8\text{ }\mu\text{m}$ (mean $6.4 \times 3.3\text{ }\mu\text{m}$; $n = 42$) in fresh preparations. $11\text{--}21$ (mean 15.6 ; $n = 22$) spores per sporogenic plasmodium. Sporogenic plasmodia mostly spherical, measuring $14.2\text{--}22.7 \times 12.9\text{--}20.3\text{ }\mu\text{m}$ (mean $18.8 \times 16.5\text{ }\mu\text{m}$; $n = 22$).

Holotype A Giemsa-stained smear with slide number 2020/13 was deposited in the Upper Austrian Museum in Linz, Austria.

Distribution/host locality Cockroach hosts are cultured at the insectarium of Aquarium Berlin, Berlin, Germany; naturally occurring in Madagascar.

Ecology Infection of the host by oral ingestion of spores. Life cycle stages develop in the Malpighian tubules. Spores released via the feces.

Etymology and host Named after its host *Elliptorhina javanica* Hanitsch, 1930.

Gene sequence rDNA operon acc. no. MW018146.

Methods

Sampling. The following insects were used in this study: *Archimandrita tessellata* (peppered cockroach), *Blaberus discoidalis* (discoide cockroach), *Blattella germanica* (German cockroach), *Elliptorhina javanica* (Halloween hisser), *Eublabeus posticus* (orange head cockroach), *Leucophaea maderae* (Madeira cockroach), *Lucihormetica subcincta* (glow spot cockroach), *Lucihormetica verrucosa* (warty glow spot cockroach), and *Forficula auricularia* (European earwig). A list of the numerous further insects microscopically checked for parasites with nephridiophagid morphology is given in Supplementary Table S1. Prior to preparation, individuals were either killed by freezing or, for morphological investigations, by crushing the head. Parts of the Malpighian tubules were removed, transferred into Ringer solution (Sigma-Aldrich), and checked for nephridiophagids by light microscopy. In case of infection, the remaining parts of tubules were stored in RNAlater stabilisation solution (Sigma-Aldrich) for molecular phylogenetic analyses. Material from further animals was processed for morphological studies.

Morphological analyses. Disrupted Malpighian tubules were smeared on microscope slides, air-dried, fixed in methanol (5 min), and stained with Giemsa solution (Accustain, Sigma-Aldrich; 45 min in a 1:10 dilution). Dried smears were embedded in Entellan (Merck). For scanning electron microscopy, cover glasses with smears of infected Malpighian tubules were air-dried and coated with gold particles using a Baltec SCD 040 sputter device. Micrographs were taken with a Quanta 200 electron microscope (FEI Company). For transmission electron microscopy, samples were fixed for several days with 2.5% glutaraldehyde in 0.1 M cacodylate buffer at 4 °C, rinsed with cacodylate buffer, and post-fixed for 1.5 h with reduced OsO_4 at room temperature without darkening (fresh 1:1 mixture of 2% OsO_4 and 3% $\text{K}_4[\text{Fe}(\text{CN})_6]$). The samples were then rinsed with distilled water, and after dehydration in a series of ethanol (15 min each in 30%, 50%, 70%, 90%, 100%, $3 \times 100\%$ water free), they were embedded in Spurr's resin⁵⁵. Ultrathin sections were stained with saturated aqueous uranyl acetate for 30 min in the dark, followed by Reynolds' lead citrate⁵⁶ for 5 min. During the latter, sodium hydroxide pellets were put next to the grids in order to remove CO_2 from the atmosphere and thus prevent precipitation of lead carbonate. The sections were investigated using a Philips CM 120 BioTwin electron microscope.

DNA extraction and long-range PCRs. To avoid DNA shearing, samples were carefully disrupted by only one freeze-thawing cycle followed by bead-beating with two steel beads (diameter: 3 mm) in a 2 mL tube using a Retsch MM 400 Mixer Mill (45 s at 30 1/s). DNA was extracted with the DNeasy Plant Mini Kit (Qiagen) following the manufacturer's instructions with two exceptions: (i) after the initial incubation in Buffer AP1 + RNase for 10 min at 65 °C, lysates were kept at room temperature for another 20 min, (ii) lower volumes of Buffer AE were used for elution. For PCR-amplification of the SSU rRNA, ITS1, 5.8S rRNA, ITS2, and most of the LSU rRNA gene, the Herculase II Fusion DNA Polymerase (Agilent Technologies) was used together with the primers NS1short and RCA95m⁵⁷, each prolonged at the 5'-end with Oxford Nanopore Universal Tags (TTT CTG TTG GTG CTG ATA TTG C-NS1short, ACT TGC CTG TCG CTC TAT CTT C-RCA95m). The PCR started with a denaturing step at 95 °C for 4 min, followed by 36 cycles at 95 °C for 25 s, 55 (or 57) °C for 25 s and 70 °C for 4 min, and a final extension step at 70 °C for 6 min. PCR products were then used as template for another PCR with 13 cycles and an annealing temperature of 62 °C but otherwise identical settings. The primers in this second PCR were replaced by sample-specific barcodes.

Library preparation and Nanopore sequencing. Products of the barcoding PCR were purified using the Agencourt AMPure XP Kit (Beckman Coulter) and quantified with both Qubit (Invitrogen) and NanoDrop (Thermo Fisher). For each sequencing run on a flow cell, four to six samples (not all part of this study) were pooled in an equimolar way yielding a total of 1 μg DNA. Library preparation comprised a DNA end repair, adapter ligation, and intermediate purification steps, and was carried out according to the 1D Sequencing SQK-LSK108 protocol (Oxford Nanopore Technologies). Samples were sequenced with a MinION equipped with

FLO-MIN106 flow cells (R9.4; Oxford Nanopore Technologies). High-accuracy base calling was employed using Guppy implemented in the MinKNOW software (Oxford Nanopore Technologies).

Long-reads processing. Reads shorter than 3500 bp, longer than 8000 bp and with more than 10 homopolymers were discarded using *mothur* v. 1.43.0⁵⁸. They were then classified with the naive Bayesian classifier⁵⁹ implemented in *mothur* using an in-house database containing Nephridiophagidae and an 80% confidence threshold. Subsequently, target sequences were extracted and demultiplexed using *Flexbar*⁶⁰, aligned with *MAFFT* 7⁶¹, and clustered employing the *opticlust* option in *mothur*. Final consensus sequences were then generated with *Consension* (<https://microbiology.se/software/consension/>).

SSU rDNA sequencing and host COII sequencing. For *A. tessellata*, *L. subcincta*, and *L. verrucosa*, the number of *Nephridiophaga* reads obtained by Nanopore sequencing was too low (< 5) to create reliable consensus sequences. Here, the SSU rDNA was amplified using the KAPA2G Fast HotStart ReadyMix and universal eukaryote primers⁶² in combination with newly designed nephridiophagid specific primers; according to Radek et al.¹⁷ but slightly modified due to a found mismatch: Neph_F, CAG TTG GGG GCG TYA GTA TT and Neph_R, AAT ACT RAC GCC CCC AAC TG. The PCR started with a denaturing step at 94 °C for 5 min, followed by 35 cycles at 94 °C for 1 min, 59 °C for 1 min, and 72 °C for 1 min, and a final extension step at 72 °C for 10 min. PCR products were cleaned and sequenced at LGC, Biosearch Technologies.

The mitochondrial COII genes of the host insects were amplified with the primers Mod A-tLeu and B-tLys2 (CAG ATA AGT GCA TTG GAT TT and GTT TAA GAG ACC AGT ACT TG, respectively; modified from Liu and Beckenbach⁶³) using the KAPA2G Fast HotStart ReadyMix. The PCR started with a denaturing step at 94 °C for 3 min, followed by 35 cycles at 94 °C for 30 s, 56 °C for 45 s, and 72 °C for 90 s, and a final extension step at 72 °C for 7 min. PCR products were cleaned and sequenced at LGC, Biosearch Technologies.

Phylogenetic analyses. Newly obtained nephridiophagid SSU and LSU rRNA gene sequences were aligned together with representatives of major fungal groups using *MAFFT* L-INS-i v. 7.055b⁶⁴ (Supplementary Data) and filtered with *trimAL* v. 1.2rev59⁶⁵ using a gap threshold of 0.3 and a similarity threshold of 0.001. Sequences were then concatenated with *SeqKit* v. 0.11.0⁶⁶. A maximum-likelihood tree was inferred from the concatenated alignment with *IQ-TREE* v. 1.6.12⁶⁷ employing the best-fitting model GTR + F + I + G4 (determined with *ModelFinder*⁶⁸). Copies of the obtained tree were manually edited to test alternative topologies using the approximately unbiased test⁶⁹: 1) nephridiophagids sister to Cladochytriales (original tree) *versus* nephridiophagids sister to the Mucoro-/Mortierellomycota clade, 2) nephridiophagids sister to Cladochytriales *versus* nephridiophagids sister to the Zoopago-/Kickxello-/Entomophthoro-/Basidiobolomycota clade, 3) nephridiophagids sister to Cladochytriales *versus* nephridiophagids sister to *Rozella*. Branch support was assessed using ultrafast bootstrap approximation³⁷ (UFBoot2; 1,000 replicates) and SH-like approximate likelihood ratio test (SH-aLRT)³⁵ (1,000 replicates). Bayesian analysis was inferred with *PhyloBayes-MPI* v. 1.8³⁶ using the GTR model and four categories for the discrete gamma distribution (53,700 generations; burnin 6000). Convergence of two independent Markov Chain Monte Carlo (MCMC) chains was tested with *bpcomp* and confirmed with *maxdiff* reaching 0.05.

COII nucleic acid sequences of the hosts were translated to amino acid sequences with *EMBOSS* *Transeq*⁷⁰, aligned with *MAFFT* L-INS-I (Supplementary Data), and filtered with *trimAL* (-automated1 flag employed). A phylogenetic tree was reconstructed using *IQ-TREE* under the best-fitting mitochondrial Metazoa protein model *mtMet*⁷¹ + G4, and node support was inferred with ultrafast bootstrap approximation (UFBoot2; 1,000 replicates) and SH-aLRT (1000 replicates). A second tree based on Bayesian analysis was built with *PhyloBayes-MPI* (model -dgam 4 -cat -gtr). Convergence of four independent MCMC chains (128,000 generations; burnin 14,000) was confirmed with *maxdiff* reaching 0.006.

Data availability

Sequence data are available under Acc. Nos. MT993857–MT993859 and MW018144–MW018149. All other data needed to evaluate the conclusions in the paper are present in the paper and the Supplementary Information.

Received: 14 October 2020; Accepted: 14 December 2020

Published online: 11 January 2021

References

1. Stork, N. E. How many species of insects and other terrestrial arthropods are there on Earth?. *Annu. Rev. Entomol.* **63**, 31–45 (2018).
2. Stork, N. E., McBroom, J., Gely, C. & Hamilton, A. J. New approaches narrow global species estimates for beetles, insects, and terrestrial arthropods. *Proc. Natl. Acad. Sci. U. S. A.* **112**, 7519–7523 (2015).
3. Lange, C. E. & Lord, J. C. Protistan entomopathogens. In *Insect Pathology* (eds. Vega, F. E. & Kaya, H. K.) 367–394 (Academic Press, 2012). <https://doi.org/10.1016/B978-0-12-384984-7.00010-5>.
4. Fabel, P., Radek, R. & Storch, V. A new spore-forming protist, *Nephridiophaga blaberi* sp. nov., in the Death's head cockroach *Blaberus craniifer*. *Eur. J. Protistol.* **36**, 387–395 (2000).
5. Ivanić, M. Die Entwicklungsgeschichte und die parasitäre Zerstörungsarbeit einer in den Zellen der Malpighischen Gefäße der Honigbiene (*Apis mellifera*) schmarotzenden Haplosporidie *Nephridiophaga apis* n. g. n. sp.. *Cellule* **45**, 291–324 (1937).
6. Ormieres, R. & Manier, J.-F. Observations sur *Nephridiophaga forficulae* (Léger, 1909). *Ann. Parasitol. Hum. Comparée* **48**, 1–10 (1973).
7. Radek, R., Wellmanns, D. & Wolf, A. Two new species of *Nephridiophaga* (Zygomycota) in the Malpighian tubules of cockroaches. *Parasitol. Res.* **109**, 473–482 (2011).

8. Radek, R. & Herth, W. Ultrastructural investigation of the spore-forming protist *Nephridiophaga blattellae* in the Malpighian tubules of the German cockroach *Blattella germanica*. *Parasitol. Res.* **85**, 216–231 (1999).
9. Woolever, P. Life history and electron microscopy of a haplosporidian, *Nephridiophaga blattellae* (Crawley) n. comb, in the Malpighian tubules of the German Cockroach, *Blattella germanica* (L.). *J. Protozool.* **13**, 622–642 (1966).
10. Radek, R., Klein, G. & Storch, V. The spore of the unicellular organism *Nephridiophaga blattellae*: ultrastructure and substances of the spore wall. *Acta Protozool.* **41**, 169–181 (2002).
11. Purrini, K. & Weiser, J. Light and electron microscope studies on a protozoan, *Oryctospora alata* n. gen., n. sp. (Protista, Coelosporidae), parasitizing a natural population of the rhinoceros beetle, *Oryctes monoceros* Oliv. (Coleoptera, Scarabaeidae). *Zool. Beitrage* **332**, 209–220 (1990).
12. Purrini, K. & Rohde, M. Light and electron microscope studies on two new protists, *Coelosporidium schalleri* n. sp. and *Coelosporidium meloidorum* n. sp. (Protista) infecting natural populations of the flea beetle, *Podagrica fuscicornis*, and flower beetle, *Mylabris maculiventris*. *Zool. Anz.* **220**, 323–333 (1988).
13. Lange, C. E. Unclassified protists of arthropods: the ultrastructure of *Nephridiophaga periplanetae* (Lutz & Splendore, 1903) n. comb., and the affinities of the Nephridiophagidae to other protists. *J. Eukaryot. Microbiol.* **40**, 689–700 (1993).
14. Perrin, W. S. Observations on the structure and life-history of *Pleistophora periplanetae*, Lutz and Splendore. *J. Cell Sci.* **49**, 615–633 (1966).
15. Sprague, V. Recent problems of taxonomy and morphology of Haplosporidia. *J. Parasitol.* **56**, 327–328 (1970).
16. Wylezich, C., Radek, R. & Schlegel, M. Phylogenetische Analyse der 18S rRNA identifiziert den parasitischen Protisten *Nephridiophaga blattellae* (Nephridiophagidae) als Vertreter der Zygomycota (Fungi). *Denisia* **13**, 435–442 (2004).
17. Radek, R. *et al.* Morphologic and molecular data help adopting the insect-pathogenic nephridiophagids (Nephridiophagidae) among the early diverging fungal lineages, close to the Chytridiomycota. *Mycoskeys* **25**, 31–50 (2017).
18. Evangelista, D. A. *et al.* An integrative phylogenomic approach illuminates the evolutionary history of cockroaches and termites (Blattodea). *Proc. R. Soc. B Biol. Sci.* **286**, 20182076 (2019).
19. Baumann, P., Moran, N. A. & Baumann, L. The evolution and genetics of aphid endosymbionts. *Bioscience* **47**, 12–20 (1997).
20. Peek, A. S., Feldman, R. A., Lutz, R. A. & Vrijenhoek, R. C. Cospeciation of chemoheterotrophic bacteria and deep sea clams. *Proc. Natl. Acad. Sci. U. S. A.* **95**, 9962–9966 (1998).
21. Hosokawa, T., Kikuchi, Y., Nikoh, N., Shimada, M. & Fukatsu, T. Strict host-symbiont cospeciation and reductive genome evolution in insect gut bacteria. *PLOS Biol.* **4**, e337 (2006).
22. Hughes, J., Kennedy, M., Johnson, K. P., Palma, R. L. & Page, R. D. M. Multiple cophylogenetic analyses reveal frequent cospeciation between peleciform birds and *Pectinopygus* lice. *Syst. Biol.* **56**, 232–251 (2007).
23. Desai, M. S. *et al.* Strict cospeciation of devescovinid flagellates and Bacteroidales ectosymbionts in the gut of dry-wood termites (Kalotermitidae). *Environ. Microbiol.* **12**, 2120–2132 (2010).
24. Wijayawardene, N. *et al.* Outline of fungi and fungus-like taxa. *Mycosphere* **11**, 1060–1456 (2020).
25. Tedersoo, L., Anslan, S., Bahram, M., Kõljalg, U. & Abarenkov, K. Identifying the 'unidentified' fungi: a global-scale long-read third-generation sequencing approach. *Fungal Divers.* **103**, 273–293 (2020).
26. Crawley, H. Interrelationships of the Sporozoa. *Am. Nat.* **39**, 607–624 (1905).
27. White, M. M. *et al.* Phylogeny of the Zygomycota based on nuclear ribosomal sequence data. *Mycologia* **98**, 872–884 (2006).
28. Letcher, P. M., Powell, M. J., Churchill, P. F. & Chambers, J. G. Ultrastructural and molecular phylogenetic delineation of a new order, the Rhizophydiales (Chytridiomycota). *Mycol. Res.* **110**, 898–915 (2006).
29. Van den Wyngaert, S., Rojas-Jimenez, K., Seto, K., Kagami, M. & Grossart, H.-P. Diversity and hidden host specificity of chytrids infecting colonial volvocacean algae. *J. Eukaryot. Microbiol.* **65**, 870–881 (2018).
30. James, T. Y. *et al.* A molecular phylogeny of the flagellated fungi (Chytridiomycota) and description of a new phylum (Blastocladiomycota). *Mycologia* **98**, 860–871 (2006).
31. Powell, M. J., Letcher, P. M., Chambers, J. G. & Roychoudhury, S. A new genus and family for the misclassified chytrid, *Rhizophlyctis harderi*. *Mycologia* **107**, 419–431 (2015).
32. Letcher, P. M., Powell, M. J., Lopez, S., Lee, P. A. & McBride, R. C. A new isolate of *Amoeboaphelidium protococcarum*, and *Amoeboaphelidium occidentale*, a new species in phylum Aphelida (Opisthosporidia). *Mycologia* **107**, 522–531 (2015).
33. Strassert, J. F. H. *et al.* Single cell genomics of uncultured marine alveolates shows paraphyly of basal dinoflagellates. *ISME J.* **12**, 304–308 (2018).
34. Jany, M. *et al.* Long-read metabarcoding of the eukaryotic rDNA operon to phylogenetically and taxonomically resolve environmental diversity. *Mol. Ecol. Resour.* **20**, 429–443 (2020).
35. Guindon, S. *et al.* New algorithms and methods to estimate maximum-likelihood phylogenies: assessing the performance of PhyML 3.0. *Syst. Biol.* **59**, 307–321 (2010).
36. Lartillot, N., Rodrigue, N., Stubbs, D. & Richer, J. Phylobayes mpi: phylogenetic reconstruction with infinite mixtures of profiles in a parallel environment. *Syst. Biol.* **62**, 611–615 (2013).
37. Hoang, D. T., Chernomor, O., Von Haeseler, A., Minh, B. Q. & Vinh, L. S. UFBoot2: improving the ultrafast bootstrap approximation. *Mol. Biol. Evol.* **35**, 518–522 (2018).
38. Lloyd, D. & Harris, J. C. *Giardia*: highly evolved parasite or early branching eukaryote? *Trends Microbiol.* **10**, 122–127 (2002).
39. Burki, F. *et al.* Phylogenomics of the intracellular parasite *Mikrocytos mackini* reveals evidence for a mitosome in Rhizaria. *Curr. Biol.* **23**, 1541–1547 (2013).
40. Abbott, C. L. Evolution: hidden at the end of a very long branch. *Curr. Biol.* **27**, R271–R273 (2014).
41. Keeling, P. J. & Fast, N. M. Microsporidia: biology and evolution of highly reduced intracellular parasites. *Annu. Rev. Microbiol.* **56**, 93–116 (2002).
42. Mozley-Standridge, S. E., Letcher, P. M., Longcore, J. E., Porter, D. & Simmons, D. R. Cladochytriales—a new order in Chytridiomycota. *Mycol. Res.* **113**, 498–507 (2009).
43. Jerônimo, G. H., Jesus, A. L., Simmons, D. R., James, T. Y. & Pires-Zottarelli, C. L. A. Novel taxa in Cladochytriales (Chytridiomycota): *Karlingiella* (gen. nov.) and *Nowakowskiella crenulata* (sp. nov.). *Mycologia* **111**, 506–516 (2019).
44. Gutiérrez, M. H., Jara, A. M. & Pantoja, S. Fungal parasites infect marine diatoms in the upwelling ecosystem of the Humboldt current system off central Chile. *Environ. Microbiol.* **18**, 1646–1653 (2016).
45. Lepelletier, F. *et al.* *Dinomyces arenensis* gen. et sp. nov. (Rhizophydiales, Dinomycetaceae fam. Nov.), a chytrid infecting marine dinoflagellates. *Protist* **165**, 230–244 (2014).
46. Hassett, B. T. & Gradinger, R. Chytrids dominate arctic marine fungal communities. *Environ. Microbiol.* **18**, 2001–2009 (2016).
47. Comeau, A. M., Vincent, W. F., Bernier, L. & Lovejoy, C. Novel chytrid lineages dominate fungal sequences in diverse marine and freshwater habitats. *Sci. Rep.* **6**, 30120 (2016).
48. Lefèvre, E., Roussel, B., Amblard, C. & Sime-Ngando, T. The molecular diversity of freshwater picoeukaryotes reveals high occurrence of putative parasitoids in the plankton. *PLoS ONE* **3**, e2324 (2008).
49. Fisher, M. C., Garner, T. W. J. & Walker, S. F. Global emergence of *Batrachochytrium dendrobatidis* and amphibian chytridiomycosis in space, time, and host. *Annu. Rev. Microbiol.* **63**, 291–310 (2009).
50. Powell, M. J. & Letcher, P. M. Chytridiomycota, Monoblepharidomycota, and Neocallimastigomycota. In *Systematics and Evolution: The Mycota VII Part A* (eds McLaughlin, D. J. & Spatafora, J. W.) 141–175 (Springer, 2014). <https://doi.org/10.1007/978-3-642-55318-9>.

51. Cali, A., Becnel, J. J. & Takvorian, P. M. Microsporidia. In *Handbook of the Protists: Second Edition* (eds. Archibald, J. M. et al.) 1559–1618 (Springer, 2017). https://doi.org/10.1007/978-3-319-28149-0_27.
52. Powell, M. J. Chytridiomycota. In *Handbook of the Protists: Second Edition* (eds. Archibald, J. M. et al.) 1523–1558 (Springer, 2017). https://doi.org/10.1007/978-3-319-28149-0_18.
53. Schulte, R. D., Makus, C., Hasert, B., Michiels, N. K. & Schulenburg, H. Multiple reciprocal adaptations and rapid genetic change upon experimental coevolution of an animal host and its microbial parasite. *Proc. Natl. Acad. Sci. U. S. A.* **107**, 7359–7364 (2010).
54. Ebert, D. Host-parasite coevolution: insights from the *Daphnia*-parasite model system. *Curr. Opin. Microbiol.* **11**, 290–301 (2008).
55. Spurr, A. R. A low-viscosity epoxy resin embedding medium for electron microscopy. *J. Ultrastructure Res.* **26**, 31–43 (1969).
56. Reynolds, E. S. The use of lead citrate at high pH as an electron-opaque stain in electron microscopy. *J. Cell Biol.* **17**, 208–212 (1963).
57. Wurzbacher, C. et al. Introducing ribosomal tandem repeat barcoding for fungi. *Mol. Ecol. Resour.* **19**, 118–127 (2019).
58. Schloss, P. D. et al. Introducing mothur: open-source, platform-independent, community-supported software for describing and comparing microbial communities. *Appl. Environ. Microbiol.* **75**, 7537–7541 (2009).
59. Wang, Q., Garrity, G. M., Tiedje, J. M. & Cole, J. R. Naïve Bayesian classifier for rapid assignment of rRNA sequences into the new bacterial taxonomy. *Appl. Environ. Microbiol.* **73**, 5261–5267 (2007).
60. Roehr, J. T., Dieterich, C. & Reinert, K. Flexbar 3.0—SIMD and multicore parallelization. *Bioinformatics* **33**, 2941–2942 (2017).
61. Nakamura, T., Yamada, K. D., Tomii, K. & Katoh, K. Parallelization of MAFFT for large-scale multiple sequence alignments. *Bioinformatics* **34**, 2490–2492 (2018).
62. Medlin, L., Elwood, H. J., Stickel, S. & Sogin, M. L. The characterization of enzymatically amplified eukaryotic 16S-like rRNA-coding regions. *Gene* **71**, 491–499 (1988).
63. Liu, H. & Beckenbach, A. T. Evolution of the mitochondrial cytochrome oxidase II gene among 10 orders of insects. *Mol. Phylogenet. Evol.* **1**, 41–52 (1992).
64. Katoh, K. & Standley, D. M. MAFFT multiple sequence alignment software version 7: improvements in performance and usability. *Mol. Biol. Evol.* **30**, 772–780 (2013).
65. Capella-Gutierrez, S., Silla-Martinez, J. M. & Gabaldon, T. trimAl: a tool for automated alignment trimming in large-scale phylogenetic analyses. *Bioinformatics* **25**, 1972–1973 (2009).
66. Shen, W., Le, S., Li, Y. & Hu, F. SeqKit: a cross-platform and ultrafast toolkit for FASTA/Q file manipulation. *PLoS ONE* **11**, e0163962 (2016).
67. Nguyen, L. T., Schmidt, H. A., Von Haeseler, A. & Minh, B. Q. IQ-TREE: a fast and effective stochastic algorithm for estimating maximum-likelihood phylogenies. *Mol. Biol. Evol.* **32**, 268–274 (2015).
68. Kalyaanamoorthy, S., Minh, B. Q., Wong, T. K. F., von Haeseler, A. & Jermini, L. S. ModelFinder: fast model selection for accurate phylogenetic estimates. *Nat. Methods* **14**, 587–589 (2017).
69. Shimodaira, H. An approximately unbiased test of phylogenetic tree selection. *Syst. Biol.* **51**, 492–508 (2002).
70. Madeira, F. et al. The EMBL-EBI search and sequence analysis tools APIs in 2019. *Nucleic Acids Res.* **47**, W636–W641 (2019).
71. Le, V. S., Dang, C. C. & Le, Q. S. Improved mitochondrial amino acid substitution models for metazoan evolutionary studies. *BMC Evol. Biol.* **17**, 136 (2017).

Acknowledgements

The study was supported by grants of the German Research Foundation (DFG) to Renate Radek (RA850/6-1), Christian Wurzbacher (WU 890/2-1), and Andreas Brune (Collaborative Research Center SFB 987). The authors thank Monika Koenning and PD Dr. Erik Schmolz from the German Environment Agency (UBA) in Berlin, Shahin Tavangari from Aquarium Berlin, and Prof. Dr. Joël Meunier from the University of Tours for providing insects. We also thank the High-Performance Computing Service of ZEDAT, Free University of Berlin, for computing time.

Author contributions

J.F.H.S. and R.R. conceived and designed the study. R.R. and T.A. investigated the cells morphologically. J.F.H.S. performed lab work and molecular phylogenetic studies. A.B. provided the Nanopore sequencing platform, and C.W. and V.H. processed the reads. J.F.H.S. and R.R. wrote the manuscript, and all authors read and approved the final version.

Competing interests

The authors declare no competing interests.

Additional information

Supplementary Information The online version contains supplementary material available at <https://doi.org/10.1038/s41598-020-79842-6>.

Correspondence and requests for materials should be addressed to J.F.H.S. or R.R.

Reprints and permissions information is available at www.nature.com/reprints.

Publisher's note Springer Nature remains neutral with regard to jurisdictional claims in published maps and institutional affiliations.



Open Access This article is licensed under a Creative Commons Attribution 4.0 International License, which permits use, sharing, adaptation, distribution and reproduction in any medium or format, as long as you give appropriate credit to the original author(s) and the source, provide a link to the Creative Commons licence, and indicate if changes were made. The images or other third party material in this article are included in the article's Creative Commons licence, unless indicated otherwise in a credit line to the material. If material is not included in the article's Creative Commons licence and your intended use is not permitted by statutory regulation or exceeds the permitted use, you will need to obtain permission directly from the copyright holder. To view a copy of this licence, visit <http://creativecommons.org/licenses/by/4.0/>.

© The Author(s) 2021