



# Biotic and abiotic factors shape arbuscular mycorrhizal fungal communities associated with the roots of the widespread fern *Botrychium lunaria* (Ophioglossaceae)

Frédéric Alexandre Sandoz, Saskia Bindschedler, Benjamin Dauphin, Laurent Farinelli, Jason Grant, Vincent Hervé

## ► To cite this version:

Frédéric Alexandre Sandoz, Saskia Bindschedler, Benjamin Dauphin, Laurent Farinelli, Jason Grant, et al.. Biotic and abiotic factors shape arbuscular mycorrhizal fungal communities associated with the roots of the widespread fern *Botrychium lunaria* (Ophioglossaceae). *Environmental Microbiology Reports*, 2020, 12 (3), pp.342-354. 10.1111/1758-2229.12840 . hal-03701741

**HAL Id: hal-03701741**

**<https://hal.science/hal-03701741>**

Submitted on 10 Jan 2024

**HAL** is a multi-disciplinary open access archive for the deposit and dissemination of scientific research documents, whether they are published or not. The documents may come from teaching and research institutions in France or abroad, or from public or private research centers.

L'archive ouverte pluridisciplinaire **HAL**, est destinée au dépôt et à la diffusion de documents scientifiques de niveau recherche, publiés ou non, émanant des établissements d'enseignement et de recherche français ou étrangers, des laboratoires publics ou privés.

## Brief Report

**Biotic and abiotic factors shape arbuscular mycorrhizal fungal communities associated with the roots of the widespread fern *Botrychium lunaria* (Ophioglossaceae)**Frédéric Alexandre Sandoz,<sup>1,2,3</sup>Saskia Bindschedler,<sup>1</sup> Benjamin Dauphin,<sup>2,4</sup>Laurent Farinelli,<sup>5</sup> Jason R. Grant<sup>2</sup> andVincent Hervé <sup>1,6,7\*</sup><sup>1</sup>Laboratory of Microbiology, Institute of Biology, University of Neuchâtel, Neuchâtel, Switzerland.<sup>2</sup>Laboratory of Evolutionary Genetics, Institute of Biology, University of Neuchâtel, Neuchâtel, Switzerland.<sup>3</sup>Conservatoire et Jardin botaniques de la Ville de Genève, Chambésy-Genève, Switzerland.<sup>4</sup>Swiss Federal Research Institute WSL, Birmensdorf, Switzerland.<sup>5</sup>Fasteris SA, Plan-les-Ouates, Switzerland.<sup>6</sup>Laboratory of Biogeosciences, Institute of Earth Surface Dynamics, University of Lausanne, Lausanne, Switzerland.<sup>7</sup>Max Planck Institute for Terrestrial Microbiology, Marburg, Germany.**Summary**

Arbuscular mycorrhizal fungi (AMF) play central roles in terrestrial ecosystems by interacting with both above and belowground communities as well as by influencing edaphic properties. The AMF communities associated with the roots of the fern *Botrychium lunaria* (Ophioglossaceae) were sampled in four transects at 2400 m a.s.l. in the Swiss Alps and analyzed using metabarcoding. Members of five Glomeromycota genera were identified across the 71 samples. Our analyses revealed the existence of a core microbiome composed of four abundant *Glomus* operational taxonomic units (OTUs), as well as a low OTU turnover between samples. The AMF communities were not spatially structured, which contrasts with most studies on AMF associated with angiosperms. pH, microbial connectivity and humus cover significantly

shaped AMF *beta* diversity but only explained a minor fraction of variation in *beta* diversity. AMF OTUs associations were found to be significant by both cohesion and co-occurrence analyses, suggesting a role for fungus–fungus interactions in AMF community assembly. In particular, OTU co-occurrences were more frequent between different genera than among the same genus, rising the hypothesis of functional complementarity among the AMF associated to *B. lunaria*. Altogether, our results provide new insights into the ecology of fern symbionts in alpine grasslands.

**Introduction**

Arbuscular mycorrhizal fungi (AMF) are important players in terrestrial ecosystems due to their ability to form mutualistic symbiotic associations with approximately 72% of terrestrial plant species (Brundrett and Tedersoo, 2018), including about 54% of pteridophyte species (Lehnert *et al.*, 2017). AMF are obligate biotrophs that, as a rule, trade nutrients (phosphorus, nitrogen and others) with plant hosts for carbon (carbohydrates and lipids) (Hodge *et al.*, 2010). In addition to this, AMF also increase plant resistance to both abiotic (e.g. drought) (Augé *et al.*, 2015) and biotic (e.g. pathogens) stresses (Gianinazzi *et al.*, 2010; Veresoglou and Rillig, 2012). However, there are exceptions, with several plant species actually exchanging little, or even no carbon to the fungal partner (Leake, 2005; Merckx *et al.*, 2009; Selosse and Roy, 2009). This is the case, for instance, in Lycopodiaceae (the lycopods, or club mosses) that have a non-photosynthetic life-stage for several years and are thus unable to exchange any carbon to their fungal partners (Winther and Friedman, 2008). Furthermore, beyond the nutritional exchange, AMF also play central roles at the ecosystem level through modifications of soil physical (e.g. aggregation) and chemical (e.g. nutrient concentrations, leaching) properties, as well as by influencing the composition of both plant and soil microbial communities

Received 10 September, 2019; accepted 20 March, 2020.  
For correspondence: \*E-mail vincent.herve8@gmail.com; Tel. (+49) 6421 178 122; Fax (+49) 6421 178 709.

© 2020 The Authors. *Environmental Microbiology Reports* published by Society for Applied Microbiology and John Wiley & Sons Ltd.  
This is an open access article under the terms of the Creative Commons Attribution License, which permits use, distribution and reproduction in any medium, provided the original work is properly cited.

(van der Heijden *et al.*, 1998; Rillig, 2004; Powell and Rillig, 2018).

Depending on the authors, AMF are classified as belonging to the Glomeromycota phylum (Schüßler *et al.*, 2001) or to the Glomeromycotina sub-phylum, Mucoromycota phylum (Spatafora *et al.*, 2016). These taxa are ubiquitous in terrestrial ecosystems and several studies have investigated their diversity and distribution across the globe (Kivlin *et al.*, 2011; Davison *et al.*, 2015; Stürmer *et al.*, 2018). It is assumed that AMF are more prominent in grasslands and tropical forests as compared to temperate or boreal forests (Allen *et al.*, 1995). Treseder and Cross (2006) highlighted that a major driver of AMF abundance was fine root biomass, whatever the biome. However, most of these studies have focused on AMF associated with angiosperm hosts, leaving other plant clades such as pteridophytes poorly investigated (Berch and Kendrick, 1982; Gemma *et al.*, 1992; Liu *et al.*, 2004; Muthukumar and Prabha, 2013; Pressel *et al.*, 2016). Molecular data on fern-associated AMF diversity based on high-throughput sequencing are even more scarce (Huang *et al.*, 2018). Thus, there is currently a gap regarding the identity and the ecology of AMF associated with pteridophytes, which are a rich and widespread plant group (Kreft *et al.*, 2010). Moreover, a large portion of these plants associate with AMF (Pressel *et al.*, 2016).

*Botrychium lunaria* (Ophioglossaceae), referred to as the common moonwort, is a widespread fern distributed throughout the northern hemisphere and a few notable disjunctions to the southern hemisphere (Dauphin *et al.*, 2014, 2016, 2017, 2018; Stensvold and Farrar, 2017). In Switzerland, *B. lunaria* is widespread in the Alps and Jura mountains (Maccagni *et al.*, 2017; Dauphin *et al.*, 2018). It belongs to the Ophioglossaceae family, which with its sister clade Psilotaceae, belongs to an early divergent lineage that diverged from the other ferns approximately 300 million years ago (Pryer *et al.*, 2004). Ophioglossaceae are known to be colonized by AMF, but to date most taxa from this family have not been investigated for their fungal symbionts (Lehnert *et al.*, 2017). *B. lunaria* seems generalist as for its habitat, although it is considered to be a pioneer species, and highly sensitive to plant competition (Muller, 1999). As all members of the Ophioglossaceae family (Smith *et al.*, 2008), *B. lunaria* is known to form subterranean, achlorophyllous and obligatory mycorrhizal gametophytes (Schmid and Oberwinkler, 1994). It has also been demonstrated that both the gametophyte and the sporophyte of *B. crenulatum* and *B. lanceolatum* are colonized by AMF (Winther and Friedman, 2007).

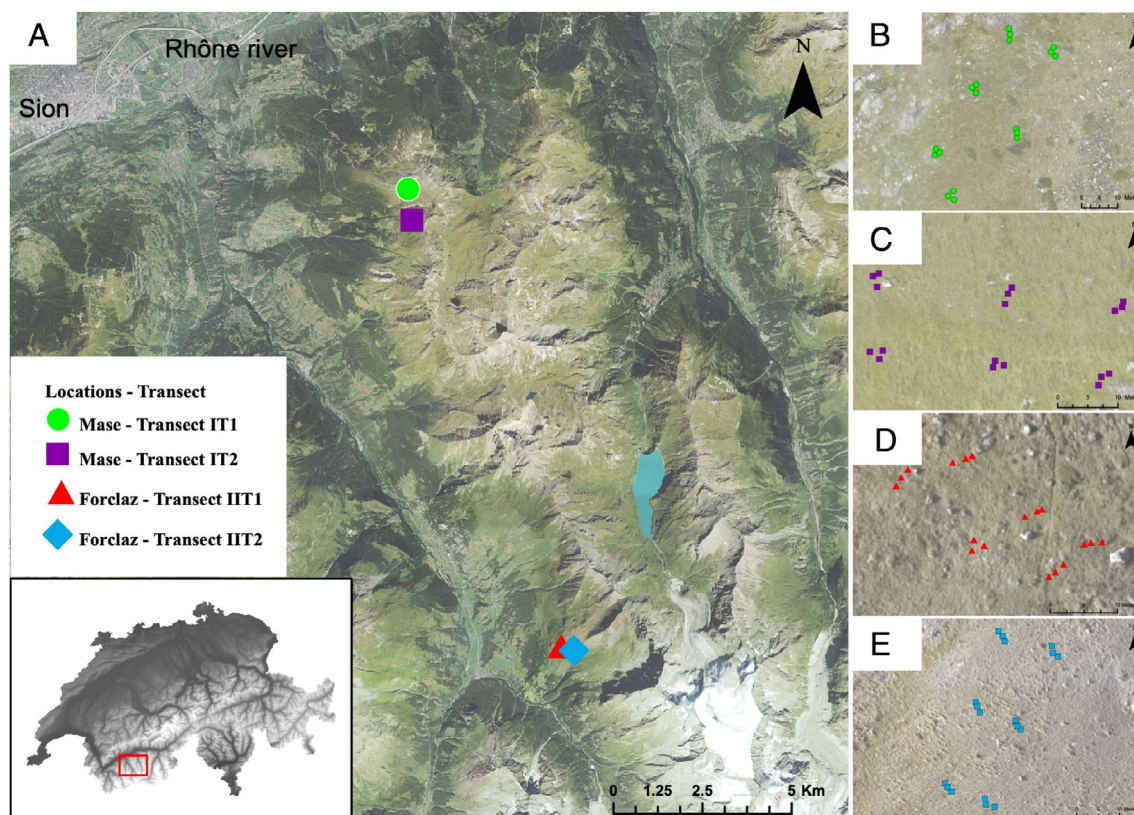
To date, molecular studies investigating the taxonomic diversity of AMF colonizing *Botrychium* ferns are restricted to a cloning and Sanger sequencing approach

(Kovács *et al.*, 2007; Winther and Friedman, 2007), implying that not all the fungal diversity may have been recovered due to low sequencing depth. Additionally, biotic and/or abiotic factors structuring the AMF communities associated with *Botrychium* species roots have not yet been investigated. However, it is now well established in angiosperm plant communities that various factors may be involved in structuring AMF communities such as the effect of the host plant species (Sepp *et al.*, 2019), neighbouring plants (Hausmann and Hawkes, 2009), soil pH (Dumbrell *et al.*, 2010), AMF phylogenetic distance and spatial distance (Horn *et al.*, 2014), effect of succession (Gao *et al.*, 2019), effect of geographic distance, soil moisture, and soil temperature (Kivlin *et al.*, 2011), as well as slope (Chai *et al.*, 2018). Furthermore, the relative roles of these abiotic and biotic factors are known to vary depending on the spatial scale of analysis (Vályi *et al.*, 2016; Caruso, 2018).

Our study aims at describing the AMF communities associated with the moonwort and at quantifying the factors that structure these communities. Therefore, we used high-throughput sequencing of 18S rRNA gene amplicons to investigate the taxonomic diversity of AMF associated with the roots of *B. lunaria* from four geographically distinct populations in the Swiss Alps. Furthermore, we investigated AMF community structure with co-occurrence and cohesion analyses. Finally, abiotic (soil physicochemical parameters, field characteristics) and biotic (floristic composition) factors, that are known to influence the community composition of AMF associated to angiosperms, were also assessed for each sampling site in order to identify and quantify the factors involved in shaping AMF communities of *B. lunaria* populations (Fig. 1).

## Results

After quality filtering and random subsampling, 1'194'362 Glomeromycota sequences originating from 71 root samples of *Botrychium lunaria* were clustered into 53 OTUs. Analysis of both the rarefaction curves and the sample-based OTUs accumulation curve indicated that sequencing depth and sample size were sufficient to estimate and compare the AMF diversity of all the samples (Supporting Information Fig. S2). This was also supported by a high Good's coverage estimator of each sample (coverage > 0.99). Regarding the richness, there was on average 26 OTUs per sample and 48 OTUs per transect, indicating a low OTU turnover. No significant difference in the patterns on  $\alpha$  diversity was observed between the four transects, considering either observed richness, Shannon diversity or the inverse of Simpson index (Kruskal-Wallis test,  $P > 0.05$ ; Supporting Information Fig. S3). Additionally, no significant correlation was



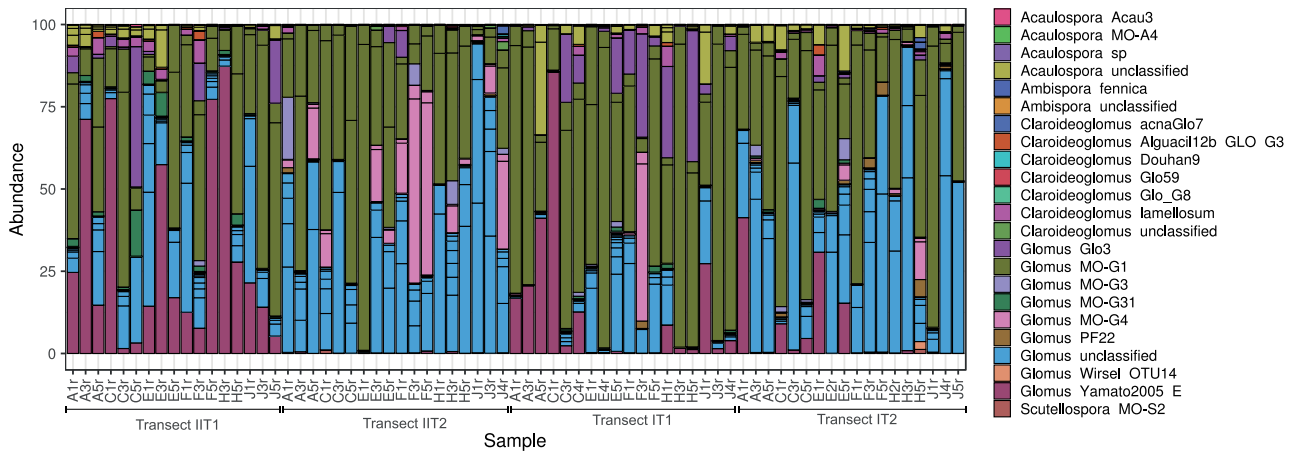
**Fig. 1.** Map of the study area in the Central Alps of Switzerland with details of the sampling design. A. Sampling locations and geographical distances of *Botrychium lunaria* roots collected in Val d'Hérens. B and C. Zooms of the transects IT1 and IT2 performed at the Mase locality. D and E. Zooms of the transects IIT1 and IIT2 carried out at the Forclaz locality. Maps were generated with ARCMAP (ESRI, 2018; Redlands, California, USA) and the background consists of an aerial photograph with a spatial resolution of 25 cm (Sion, Valais, Switzerland; <https://www.vs.ch/web/egeo>).

found between AMF OTU richness and any of the floristic or edaphic variable measured in the present study. However, a negative and significant relationship ( $r = -0.54$ ,  $P < 0.001$ ) was observed between the richness of the neighbouring plants surrounding *B. lunaria* sporophytes and the soil pH (Supporting Information Fig. S4).

The high-throughput amplicon sequencing of the AMF associated with *B. lunaria* roots revealed the presence of five genera (Fig. 2): *Glomus* (31 OTUs, 95.88% of the reads), *Acaulospora* (9 OTUs, 2.59% of the reads), *Claroideoglomus* (9 OTUs, 1.44% of the reads), *Ambispora* (3 OTUs, 0.05% of the reads) and *Scutellospora* (1 OTU, 0.04% of the reads). Across all samples, a core microbiome (OTUs present in all the samples) of four OTUs belonging the genus *Glomus* (including *Glomus* MO-G1) and representing 61.74% of the reads was identified.

Probabilistic modelling based on Dirichlet multinomial mixture models was used as unsupervised clustering method to partition AMF communities into community types. The optimal cluster number was two, further referred to as community types A and B. Principal

coordinates analysis (PCoA) based on Canberra distances (Kuczynski *et al.*, 2010) confirmed the existence of two community types (Fig. 3A). Additionally, AMOVA indicated that variation among community types [sum of squares (SS) = 1.14] was much lower than within community types (SS = 7.71) and that the observed separation between these two community types was statistically significant ( $P < 0.001$ ). This latter result was confirmed by ANOSIM ( $R = 0.43$ ,  $P < 0.001$ ). Community type A included samples from the four transects, whereas community type B contains samples from three of the four transects. Then, edaphic and floristic variables were investigated within these two community types. We found that soil pH was significantly lower in community type A (mean pH value 5.34) compared to B (mean pH value 6.33) (Wilcoxon test,  $P < 0.001$ ; Fig. 3B). Using compositional balances (Rivera-Pinto *et al.*, 2018), five OTUs signatures of these two community types were identified (Fig. S5). We found that two OTUs (*Glomus* MOG31 and *Acaulospora* Acau3) were preferentially found in the community type A associated with more

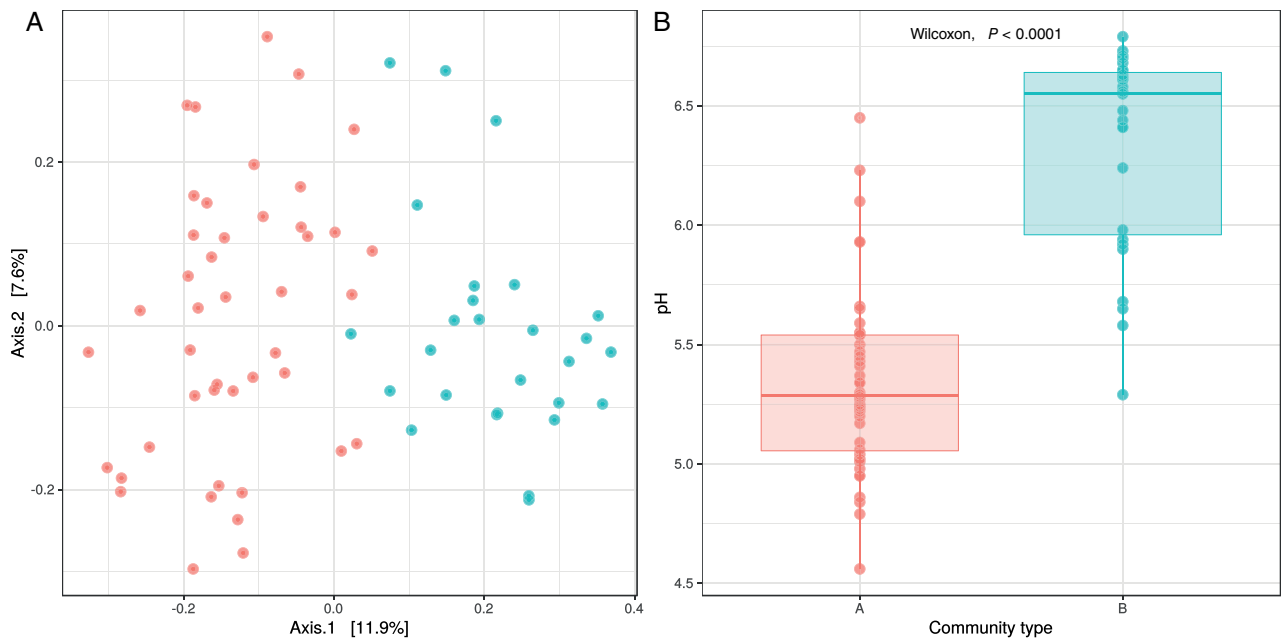


**Fig. 2.** Taxonomic composition of the 71 samples based on the MaarjAM database. Horizontal black lines delimit OTU relative abundance.

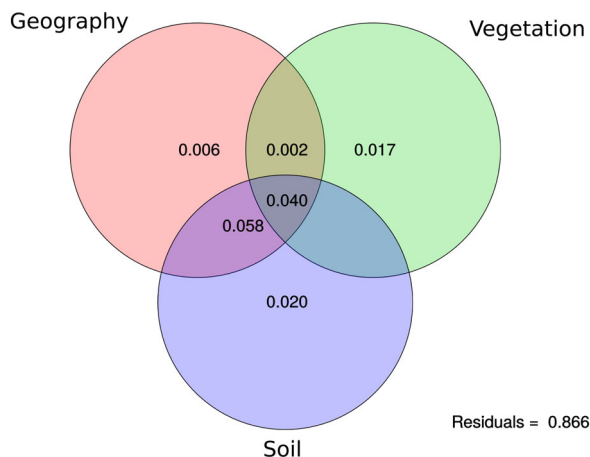
acidic soil pHs, whereas three OTUs (unclassified *Glo-*  
*mus*) were preferentially found in the community type B.

To further disentangle the respective contribution of geography, floristic composition, and soil properties in explaining the variation in AMF community structure, an analysis of variation partitioning was performed (Fig. 4). The largest part of the variation explained by geography (i.e. latitude and longitude) was shared with the soil properties, indicating that edaphic and spatial variables were strongly intercorrelated. Conversely, the proportion of

variation in community composition explained by purely spatial structure was extremely low (adjusted  $R^2 = 0.006$ ), highlighting the very weak influence of only geographic distance as part of the factor geography, and thus, indicating an absence of spatial pattern. Variation explained by floristic (adjusted  $R^2 = 0.017$ ) and soil (adjusted  $R^2 = 0.020$ ) variables with no spatial structure was around three time higher than the spatial variables. A significant explained variation was also shared by the interaction of the three matrices (adjusted  $R^2 = 0.04$ ).



**Fig. 3.** A. Principal Coordinates Analysis (PCoA) based on Canberra distances among the AMF communities. Samples were assigned to community type A (red) and B (blue) by unsupervised clustering. B. Soil pH of the samples associated with community type A and B by unsupervised clustering (see Methods for details).



**Fig. 4.** Venn diagram illustrating the variation partitioning analysis. The contribution of spatial distance (geography), soil physicochemical properties (soil) and floristic composition (vegetation) on the AMF community structure is presented. Numbers indicate adjusted  $R^2$  values. Negative values are not shown.

Yet, a large fraction of the variation was not explained by any of these three variables (adjusted  $R^2 = 0.866$ ), indicating that these variables were rather poor predictors of the AMF community structure.

Co-occurrence analyses based on a presence–absence matrix of AMF OTUs associated with *B. lunaria* roots across all samples revealed 9.8% of non-random co-occurrences including 94 positive and 29 negative ones and thus indicating some degree of association among AMF OTUs. Positive co-occurrences indicate that several OTUs were found associated with a greater degree than expected by chance only, while negative co-occurrences suggest exclusion between AMF OTUs. At the genus level, we observed 33 positive co-occurrences among *Glomus*, 17 between *Glomus* and *Acaulospora*, 14 between *Glomus* and *Claroideoglomus*, seven between *Claroideoglomus* and *Acaulospora* as well as seven among *Acaulospora* and four among *Acaulospora* (Supporting Information Table S2). On the other hand, we found nine negative co-occurrences between *Glomus* and *Claroideoglomus*, five among *Glomus*, four between *Glomus* and *Acaulospora*, and four between *Glomus* and *Ambispora* (Supporting Information Table S3). Overall, there were more co-occurrences between OTUs from

distinct genera (49 positive and 22 negative ones) than among OTUs of the same genus (45 positive and 7 negative ones).

Because of the existence of these non-random patterns of co-occurrence, we further quantified the degree of connectivity (positive and negative cohesions) and complexity of associations among the AMF communities, using a recently developed statistical method named cohesion (Herren and McMahon, 2017). First, 10 OTUs with the lowest negative and the highest positive connectedness were investigated, representing potential keystone taxa (Herren and McMahon, 2018). OTUs with the lowest negative connectedness (nine assigned to *Glomus* and one to *Claroideoglomus*) corresponded to abundant OTUs, including the four members of the core microbiome. Interestingly, two of the three OTUs occurring preferentially in the community type B (higher soil pH) were also among these negatively connected OTUs. On the contrary, OTUs with the highest positive connectedness (eight assigned to *Glomus*, one to *Ambispora* and one to *Claroideoglomus*) corresponded to low abundance OTUs (relative abundance ranging from 0.05% to 4.67%).

In order to evaluate the influence of both abiotic and biotic factors on the AMF community composition, multivariate analysis of deviance of generalized linear models (GLMs) was applied. Forward selection on the explanatory variables identified positive cohesion, negative cohesion, pH and humus cover as significant variables (Table 1). Neighbouring plants, via the humus cover quantified by the Landolt's indicator H, showed a significant effect on AMF community composition, but with a lower explained deviance compared to the three other variables mentioned above (Dev = 83,  $P < 0.005$ ). This indicator ranges from 1, for a bare soil with no humus cover, to 5 for raw humus or bog, with plants rooting particularly in humus. As an abiotic factor, pH showed a higher explained deviance (Dev = 573,  $P < 0.001$ ) compared to the other biotic factors (Table 1). Both cohesion metrics contributed significantly to explain AMF community composition, with slightly higher explained deviance for the negative cohesion than for the positive one (Dev = 350,  $P < 0.001$  for negative cohesion; Dev = 326,  $P < 0.001$  for positive cohesion). As mentioned previously, soil pH was also

**Table 1.** Multivariate analysis of the deviance of generalized linear models fitting AMF communities to biotic and abiotic factors.

	Residual Degree of freedom	Degree of freedom difference	Deviance	<i>P</i> value
Positive cohesion	69	1	326	0.001
Negative cohesion	68	1	350	0.001
pH	67	1	573	0.001
Humus (H)	66	1	83	0.004

significantly different between the two community types identified by unsupervised clustering. A similar trend was observed for the positive cohesion ( $P < 0.05$ ), but not for the negative cohesion (Supporting Information Fig. S6). Finally, the difference in humus cover was only marginally significant ( $P < 0.09$ ).

## Discussion

Previous studies have investigated AMF communities in the Alps, either based on spore morphology (Read and Haselwandter, 1981; Oehl *et al.*, 2011; Oehl and Körner, 2014) or on molecular techniques such as DNA fingerprinting and cloning-sequencing (Sykorová *et al.*, 2007; Casazza *et al.*, 2017). With the emergence of next-generation sequencing, and the bypass of cloning steps, it is now possible to study the species diversity and structure of AMF communities in natural populations. However, on the regional or global scale, knowledge about the molecular diversity of AMF communities in high altitudes ( $> 2000$  m a.s.l.) remains poor (Bueno de Mesquita *et al.*, 2018). Here, we showed both the taxonomic diversity and the community structure of the AMF associated with the roots of the fern *Botrychium lunaria* from alpine grasslands at 2400 m a.s.l. Using high-throughput sequencing of 18S rRNA gene amplicons from 71 roots samples, the AMF diversity was fully covered and resulted in 53 OTUs.

Despite the apparent lack of specificity of plants for their AMF symbionts (there are many more plants species than AMF species), several studies have demonstrated that old plant lineages such as liverworts (Russell and Bulman, 2004), Lycopodiaceae (Winther and Friedman, 2008), and Ophioglossaceae (Field *et al.*, 2015) were usually associated with Glomeromycota belonging to the *Glomus* genus. The long co-evolution between these plant lineages and their symbiotic fungal partners may explain this apparent specificity (Brundrett, 2002). To date, only a few *Botrychium* species have been investigated for their AMF composition and this was done solely using a cloning sequencing approach. Winther and Friedman (2007) reported that *B. crenulatum* and *B. lanceolatum* were colonized by members of the *Glomus* genus. On the other hand, it was found that *B. virginianum* was colonized by both members of *Glomus* (West *et al.*, 2009) and *Scutellospora* (Kovács *et al.*, 2007). In this study, we confirmed the presence of *Glomus* as a dominant member of the root-associated AMF community of *B. lunaria* and go further in describing the taxonomic composition. We reported for the first time the presence of *Acaulospora* (nine OTUs), *Ambispora* (three OTUs), and *Claroideoglomus* (nine OTUs) genera. The existence in our data set of a core microbiome of four *Glomus* OTUs representing 62% of the reads

strengthened the importance of this fungal genus among AMF associated to *Botrychium* and more generally with ferns (West *et al.*, 2009). Using the online database MaarjAM (Opik *et al.*, 2010), we also found that, in previous studies, most of the sequences associated with the *Botrychium* genus belonged to *Glomus*. Thus, our data bring new insights into the AMF diversity associated with the widespread *Botrychium* species and more generally to alpine AMF ecology.

Regarding OTU richness, no significant correlation was found with any of the floristic or edaphic variables measured in the present study. This contrasts with other studies in alpine grasslands (Xiang *et al.*, 2016), orchards (Van Geel *et al.*, 2015), and tropical montane forests (Camenzind *et al.*, 2014) where N and P contents significantly influenced AMF OTU richness. Because AMF colonize both soil and roots (Vályi *et al.*, 2016), they depend on both the edaphic conditions and the host plant (Vályi *et al.*, 2015), with the latter controlling the initiation and degree of colonization by signalling compounds (Schmitz and Harrison, 2014). As a result, in order to settle into plant roots and in agreement with the modern coexistence theory (HilleRisLambers *et al.*, 2012), AMF have to pass through two filters: an environmental (i.e. the soil) and a biotic filter (i.e. the plant host). Since we only analyzed root samples from a single fern species, the present study was not designed to test the effect of the host plant on the AMF communities. However, the presence of a core microbiome composed of four abundant OTUs strongly suggests that, at local scale, a large fraction of the AMF community is constantly associated with the host, regardless of the geographical distance between plants or of the edaphic parameters. *B. lunaria* might act as a biotic filter and contributes partially to the structure of its root-associated AMF community. As such, the importance of the core microbiome and the very low OTU turnover observed between samples, could also be explained by a host symbiont specificity. Indeed, such effect has been observed between plants and AMF (Becklin *et al.*, 2012; Sepp *et al.*, 2019). Both of these hypotheses should be tested in further experiments including several fern species and soil samples.

On the other hand, the effect of the environment on the AMF community structure was detected in different analyses. First, unsupervised clustering analysis identified two community types found in soils with significantly different pH (Fig. 3), suggesting that pH conditions might drive AMF community assembly of *B. lunaria* roots. Five OTUs were identified as microbial signatures of these two community types (Supporting Information Fig. S5) and among them, one OTU assigned to the *Acaulospora* genus was preferentially found in the more acidic samples (community type A). Interestingly, this genus has already been shown to be associated with acidic soils

(Morton, 1986; Coughlan *et al.*, 2000). Second, multivariate analysis of the deviance of generalized linear models confirmed the major influence of pH on AMF community structure, since pH was the significant factor explaining the highest deviance (Table 1). The major role of pH in structuring AMF communities has already been reported from studies with wide soil pH conditions (pH 3.72 to 8.04) (Dumbrell *et al.*, 2010). As already shown by Lekberg *et al.* (2011) in grasslands, our results highlight that even within a more narrow range (pH 4.56–6.79), pH is a strong predictor of AMF community composition. It should also be pointed out that the effect of the pH gradient might reflect a spatial gradient, since in our study, the edaphic and spatial variables were intercorrelated (Fig. 4). Yet, the two community types were both present in three of the four sampled populations (on both Mase and Forclaz sampling locations, see Fig. 1), indicating that dispersal limitation was not a structuring factor at the scale of our study. This was confirmed by the variation partitioning analysis that revealed a negligible proportion of variance explained by purely spatial factors (Fig. 4). Additionally, soil pH was found to be negatively correlated with the species richness of the plants surrounding *B. lunaria* (Supporting Information Fig. S4), indicating that pH is a driver of both above- and belowground diversity. This pattern can be explained by the *habitat hypothesis* introduced by Zobel and Öpik (2014), where both plant and AMF communities follow changes in abiotic conditions. Three of the four sampled transects were grasslands at a climax state. Therefore, in such stable ecosystems at late succession, only the *habitat hypothesis* can explain spatial co-variation of plant and AMF communities, and this co-variation was also identified in the variation partitioning analysis (Fig. 4).

Although the influence of plant communities on AMF community composition was reported in grassland microcosms (Johnson *et al.*, 2004; Hausmann and Hawkes, 2009), here, we did not identify a direct effect of the floristic composition on the AMF community structure. However, we found that one of the derived Landolt's ecological indicators, namely humus cover (H), significantly influenced the AMF community composition (Table 1). Humus harbours diverse soil taxa, including mycorrhizal fungi, and concentrates various biological activities (Ponge, 2003). It is also a central place and a particular environment for aboveground-belowground interactions, especially plant–soil feedbacks (Ponge, 2013). AMF have been reported to be indirectly involved in litter decomposition via the stimulation of microbial decomposers (Bunn *et al.*, 2019). Therefore, these AMF–decomposers interactions could be under the control of the humus forms (Ponge, 2013). Alternatively, humus cover could influence AMF community composition via its impact on soil temperature and moisture. To our

knowledge, this is one of the few studies reporting a significant relationship between ecological indicator values inferred from floristics and AMF community composition, highlighting again the link between above- and belowground components in the grassland ecosystem. Thus, this result also calls for a more systematic use of such ecological indicator values when studying AMF communities, especially in alpine environments. It should be underlined that, altogether spatial distance, soil physicochemical properties and floristic composition only explained a minor fraction of the AMF community composition variance and therefore, that a large proportion of variance remained unexplained (Fig. 4). This could be due to a strong selective effect of *B. lunaria*, as discussed above. Additionally, biotic interactions, among AMF or between AMF and other soil organisms, could impact AMF community structure.

Indeed, another factor structuring the AMF communities associated to *B. lunaria* was the potential interactions within the AMF communities, as demonstrated by co-occurrence and cohesion analyses. The role of non-host biotic interactions in structuring AMF communities has already been discussed (Vályi *et al.*, 2016). For instance, the importance of interactions within the AMF community of *Festuca brevipila* in grasslands with environmental gradients has been suggested (Horn *et al.*, 2017). Here, we confirm this idea with quantitative data using the cohesion metrics that measure the degree of connectivity of a microbial community (Herren and McMahon, 2017). Both positive and negative cohesions contributed significantly to explain AMF community composition, with relatively similar explained deviance values (Table 1). Together, these two biotic factors explain more deviance than the pH and the humus coverage, showing the importance of AMF connectivity compared to edaphic factors. Cohesion metrics have been used to describe community complexity (negative cohesion) and community dynamics (positive cohesion) (Danczak *et al.*, 2018). On closer examination, we observed that OTUs with the lowest negative connectedness represented abundant OTUs including the members of the core microbiome, here supporting that negative cohesion reflects community stability and low turnover within this community. Conversely, OTUs with the highest positive connectedness represented low abundance OTUs, occurring in fewer samples and thus reflecting the fraction of the community with a higher turnover. This also highlights the importance of low abundant OTUs in the AMF community structure. The existence of these two types of OTUs could be the results of different life-history strategies of the AMF (trade-off between colonization and persistence; competitors, stress tolerators and ruderals AMF) (Hart *et al.*, 2001; Chagnon *et al.*, 2013), with the abundant and prevalent OTUs showing high persistence abilities,

while less abundant and less prevalent OTUs would present traits promoting rapid colonization abilities. Such low abundant OTUs could only be identified *in situ* with an appropriate sequencing depth of the amplicons, reinforcing the need for high-throughput sequencing to properly describe the molecular diversity and community structure of AMF. Open questions remain about the importance of these low abundant AMF OTUs for ecosystem functioning (Jousset *et al.*, 2017).

Regarding the AMF co-occurrences, we always found more co-occurrences between OTUs of different genera (49 positive and 22 negative ones) than among OTUs of the same genus (45 positive and 7 negative ones). This observation contrasts with results obtained from soil samples collected across a European transect (Bouffaud *et al.*, 2016). Our co-occurrence pattern could support different interpretations. The high number of positive co-occurrences between OTUs from different genera (i.e. phylogenetically distant OTUs, with likely different functional characteristics) could be the result of competitive exclusion, which would prevent the co-occurrence of closely related and functionally similar OTUs. Indeed, Glomeraceae, Gigasporaceae and Acaulosporaceae present distinct functional traits, which are phylogenetically conserved (Maherali and Klironomos, 2007, 2012). Thus, *B. lunaria* could benefit from functional complementarity of OTUs belonging to different genera and/or families. The detection of negative co-occurrences could be the results of competitive interactions between AMF OTUs (Thonar *et al.*, 2014). AMF could, for instance, compete for root space. Because we identified two community types and a significant effect of soil pH on the AMF community structure, these negative co-occurrences may also reflect environmental preferences (here, pH-related) of certain AMF OTUs leading to the exclusion of these OTUs if abiotic conditions are not suitable for their survival (i.e. non-overlapping niches between OTUs). Lastly, the higher number of positive compared to negative co-occurrences, associated with the low OTU turnover observed between our samples, support one more time the hypothesis of *B. lunaria* having a strong selective effect on AMF community composition.

## Conclusions

We provide, at a regional scale, the first molecular inventory of the AMF associated with the widespread fern *Botrychium lunaria*. Community analysis revealed the existence of an abundant core microbiome and of a low OTU turnover. Contrary to what is generally observed with angiosperm hosts, we found no spatially structured pattern of the community. Soil properties (mainly pH) and aboveground vegetation (humus cover) significantly impacted the AMF community composition but overall,

remained relatively poor predictors. OTU associations were not random, indicating a potential role of AMF interactions in community structure. Lastly, even if more data will be needed to confirm this hypothesis, our data suggest that *B. lunaria* has a strong selective effect on the composition of its AMF symbionts (i.e. host specificity).

## Experimental procedures

This study was carried out in the *Val d'Hérens* (Valais canton, Switzerland) in June 2015. Four alpine populations (IT1, IT2, IIT1, IIT2: Fig. 1A) of *Botrychium lunaria* were sampled at about 2400 m above sea level. Each population consisted of six sampling plots, which were organized in two technical replicates (IT1/IT2 and IIT1/IIT2), each replicate made up of three plots (Fig. 1B–E). Finally, each of these plots contained three quadrats (0.25 m × 0.25 m) in which root samples of *B. lunaria* and the associated rhizospheric soil were collected (Supporting Information Fig. S1). A distance of about 0.75 m between the different sampled quadrats was respected as far as this was possible. Overall, this corresponded to 18 root samples and their associated rhizospheric soil for each population, resulting in a total of 72 samples from the four populations (Fig. 1A–E).

The floristic composition (phytosociological *relevés*) was assessed on a normalized surface of 0.0625 m<sup>2</sup> (0.25 m × 0.25 m) within each quadrat according to the *Braun-Blanquet's* method (Braun-Blanquet and Pavillard, 1925). Floristic records were used to estimate the *alpha* diversity of the plants (N0\_plants) surrounding *B. lunaria* sporophytes as well as to calculate eight Landolt's ecological indicator values: Colloidal dispersion (D), Continentality (K), Light (L), Moisture (F), Humus (H), Nutritive substances (N), pH reaction (R) and Temperature (T) (Landolt *et al.*, 2010) (Supporting Information Table S1).

A total of 72 rhizospheric soil samples were analyzed in order to measure: residual moisture (Hr %), total phosphorus (Ptot), pH, organic carbon (Corg) and total nitrogen (Ntot) contents (Supporting Information Table S1). The corresponding 72 root samples were crushed using tungsten beads and DNA extractions were carried out using the *DNeasy Plant Mini Kit* (Qiagen) following the manufacturer instructions (*Quick-Start Protocol*). The primers AMV4.5NF and AMDGR (Sato *et al.*, 2005) were used to amplify a fragment of the 18S rRNA gene including the variable domain V4 and the 72 DNA libraries were sequenced on an Illumina 2 × 250 MiSeq platform by Fasteris SA (Plan-les-Ouates, Switzerland).

Amplicon sequence processing was performed using *mothur* software version 1.39.5 (Schloss *et al.*, 2009) and by mainly following the Schloss standard operating procedure for MiSeq Illumina data (Kozich *et al.*, 2013). To

account for differences in sampling efforts, 16 822 sequences were randomly subsampled from each sample. Sequences were clustered into 97% sequence similarity OTUs using the OptiClust algorithm (Westcott and Schloss, 2017). A representative sequence of each OTU was classified using the naive Bayesian classifier with the MaarJAM database (Opik *et al.*, 2010) and an 80% confidence threshold. Then, the OTU table was curated with the LULU algorithm to remove erroneous rare OTUs based on both sequence similarity thresholds and within-sample patterns of co-occurrence (Frøslev *et al.*, 2017). Finally, singletons were excluded. The raw sequence data have been deposited in the NCBI Sequence Read Archive under BioProject PRJNA547499.

Rarefaction curves, Good's coverage estimator, analysis of molecular variance (AMOVA) (Schloss, 2008), ANOSIM (Clarke, 1993) and Dirichlet multinomial mixture models for unsupervised clustering (Holmes *et al.*, 2012) were computed with *mothur* version 1.39.5 (Schloss *et al.*, 2009). All the other analyses and data visualization were computed using R software version 3.4.4. (<https://www.r-project.org/>). *Alpha* and *beta* diversity were visualized with the *phyloseq* package (McMurdie and Holmes, 2013). To quantify the contribution of spatial distance, soil properties, and floristic composition on the total variation of the AMF OTU abundances, variation partitioning (Borcard *et al.*, 1992) was performed using the *vegan* R package (Oksanen *et al.*, 2012). Regarding the spatial matrix, a set of spatial predictors from the geographical coordinates was computed by principal coordinates of neighbour matrices (PCNM). Subsequently, forward selection (Blanchet *et al.*, 2008) of PCNM variables based on  $10^5$  permutation was applied with the *packfor* R package in order to retain only the significant variables. To identify AMF OTU signatures of the different community types, we computed compositional balances using the *selbal* algorithm implemented in the eponymous R package (Rivera-Pinto *et al.*, 2018). To evaluate the co-occurrence probability between AMF OTUs, the Veech probabilistic model of species co-occurrence with a hypergeometric distribution (Veech, 2013) was applied using the *cooccur* R package (Griffith *et al.*, 2016). A cohesion analysis was used to compute positive and negative cohesion metrics (Herren and McMahon, 2017) and also to identify the most connected OTUs, which have been shown to be potential keystone taxa of a community (Herren and McMahon, 2018). To determine which abiotic or biotic variables significantly explained variations in AMF community composition, a forward selection (Blanchet *et al.*, 2008) was performed using the *packfor* R package. Then, the impact of abiotic and biotic variables on community structure was investigated with generalized linear models (GLMs) for multivariate abundance data using the *mvabund* R package (Wang *et al.*, 2012).

Full details of all experimental procedures are given in the Supporting Information.

## Acknowledgements

This work was supported by the Swiss National Science Foundation (grants CR32I2-149853/1 31003A\_156456), and the Fonds Wuthrich Mathey-Dupraz for field work. The authors thank Marie Zufferey, Clément Duckert, Simon Doizy and Julien Vieu for their help during the field fieldwork. The authors also thank the three anonymous reviewers for their helpful and constructive comments.

## References

- Allen, E.B., Allen, M.F., Helm, D.J., Trappe, J.M., Molina, R., and Rincon, E. (1995) Patterns and regulation of mycorrhizal plant and fungal diversity. *Plant Soil* **170**: 47–62.
- Augé, R.M., Toler, H.D., and Saxton, A.M. (2015) Arbuscular mycorrhizal symbiosis alters stomatal conductance of host plants more under drought than under amply watered conditions: a meta-analysis. *Mycorrhiza* **25**: 13–24.
- Becklin, K.M., Hertweck, K.L., and Jumpponen, A. (2012) Host identity impacts rhizosphere fungal communities associated with three alpine plant species. *Microb Ecol* **63**: 682–693.
- Berch, S.M., and Kendrick, B. (1982) Vesicular-arbuscular mycorrhizae of southern Ontario ferns and fern-allies. *Mycologia* **74**: 769–776.
- Blanchet, F.G., Legendre, P., and Borcard, D. (2008) Forward selection of explanatory variables. *Ecology* **89**: 2623–2632.
- Borcard, D., Legendre, P., and Drapeau, P. (1992) Partialling out the spatial component of ecological variation. *Ecology* **73**: 1045–1055.
- Bouffaud, M.-L., Creamer, R.E., Stone, D., Plassart, P., van Tuinen, D., Lemanceau, P., *et al.* (2016) Indicator species and co-occurrence in communities of arbuscular mycorrhizal fungi at the European scale. *Soil Biol Biochem* **103**: 464–470.
- Braun-Blanquet, J. and Pavillard, J. (1925) Vocabulaire de sociologie végétale.
- Brundrett, M.C. (2002) Coevolution of roots and mycorrhizas of land plants. *New Phytol* **154**: 275–304.
- Brundrett, M.C., and Tedersoo, L. (2018) Evolutionary history of mycorrhizal symbioses and global host plant diversity. *New Phytol* **220**: 1108–1115.
- Bueno de Mesquita, C.P., Sartwell, S.A., Ordemann, E.V., Porazinska, D.L., Farrer, E.C., King, A.J., *et al.* (2018) Patterns of root colonization by arbuscular mycorrhizal fungi and dark septate endophytes across a mostly-unvegetated, high-elevation landscape. *Fungal Ecol* **36**: 63–74.
- Bunn, R.A., Simpson, D.T., Bullington, L.S., Lekberg, Y., and Janos, D.P. (2019) Revisiting the 'direct mineral cycling' hypothesis: arbuscular mycorrhizal fungi colonize leaf litter, but why? *ISME J* **13**: 1891–1898.
- Camenzind, T., Hempel, S., Homeier, J., Horn, S., Velescu, A., Wilcke, W., and Rillig, M.C. (2014) Nitrogen and phosphorus additions impact arbuscular mycorrhizal

- abundance and molecular diversity in a tropical montane forest. *Glob Chang Biol* **20**: 3646–3659.
- Caruso, T. (2018) Disentangling the factors shaping arbuscular mycorrhizal fungal communities across multiple spatial scales. *New Phytol* **220**: 954–956.
- Casazza, G., Lumini, E., Ercole, E., Dovana, F., Guerrina, M., Amulfo, A., *et al.* (2017) The abundance and diversity of arbuscular mycorrhizal fungi are linked to the soil chemistry of screes and to slope in the Alpic paleo-endemic *Berardia subacaulis*. *PLoS One* **12**: e0171866.
- Chagnon, P.-L., Bradley, R.L., Maherali, H., and Klironomos, J.N. (2013) A trait-based framework to understand life history of mycorrhizal fungi. *Trends Plant Sci* **18**: 484–491.
- Chai, Y., Jiang, S., Guo, W., Qin, M., Pan, J., Bahadur, A., *et al.* (2018) The effect of slope aspect on the phylogenetic structure of arbuscular mycorrhizal fungal communities in an alpine ecosystem. *Soil Biol Biochem* **126**: 103–113.
- Clarke, K.R. (1993) Non-parametric multivariate analyses of changes in community structure. *Austral Ecol* **18**: 117–143.
- Coughlan, A.P., Dalpé, Y., Lapointe, L., and Piché, Y. (2000) Soil pH-induced changes in root colonization, diversity, and reproduction of symbiotic arbuscular mycorrhizal fungi from healthy and declining maple forests. *Can J For Res* **30**: 1543–1554.
- Danczak, R.E., Johnston, M.D., Kenah, C., Slattery, M., and Wilkins, M.J. (2018) Microbial community cohesion mediates community turnover in unperturbed aquifers. *mSystems* **3**: e00066–e00018.
- Dauphin, B., Farrar, D.R., Maccagni, A., and Grant, J.R. (2017) A worldwide molecular phylogeny provides new insight on cryptic diversity within the moonworts (*Botrychium* s. s., Ophioglossaceae). *Syst Bot* **42**: 620–639.
- Dauphin, B., Grant, J., and Mráz, P. (2016) Ploidy level and genome size variation in the homosporous ferns *Botrychium* s.l. (Ophioglossaceae). *Plant Syst Evol* **302**: 575–584.
- Dauphin, B., Grant, J.R., Farrar, D.R., and Rothfels, C.J. (2018) Rapid allopolyploid radiation of moonwort ferns (*Botrychium*; Ophioglossaceae) revealed by PacBio sequencing of homologous and homeologous nuclear regions. *Mol Phylogenet Evol* **120**: 342–353.
- Dauphin, B., Vieu, J., and Grant, J.R. (2014) Molecular phylogenetics supports widespread cryptic species in moonworts (*Botrychium* s.s., Ophioglossaceae). *Am J Bot* **101**: 128–140.
- Davison, J., Moora, M., Opik, M., Adholeya, A., Ainsaar, L., Ba, A., *et al.* (2015) Global assessment of arbuscular mycorrhizal fungus diversity reveals very low endemism. *Science* (80-) **349**: 970–973.
- Dumbrell, A.J., Nelson, M., Helgason, T., Dytham, C., and Fitter, A.H. (2010) Relative roles of niche and neutral processes in structuring a soil microbial community. *ISME J* **4**: 337–345.
- Field, K.J., Leake, J.R., Tille, S., Allinson, K.E., Rimington, W.R., Bidartondo, M.I., *et al.* (2015) From mycoheterotrophy to mutualism: mycorrhizal specificity and functioning in *Ophioglossum vulgatum* sporophytes. *New Phytol* **205**: 1492–1502.
- Frøsløv, T.G., Kjølner, R., Bruun, H.H., Ejrnæs, R., Brunbjerg, A.K., Pietroni, C., and Hansen, A.J. (2017) Algorithm for post-clustering curation of DNA amplicon data yields reliable biodiversity estimates. *Nat Commun* **8**: 1188.
- Gao, C., Montoya, L., Xu, L., Madera, M., Hollingsworth, J., Purdom, E., *et al.* (2019) Strong succession in arbuscular mycorrhizal fungal communities. *ISME J* **13**: 214–226.
- Van Geel, M., Ceustermans, A., Van Hemelrijck, W., Lievens, B., and Honnay, O. (2015) Decrease in diversity and changes in community composition of arbuscular mycorrhizal fungi in roots of apple trees with increasing orchard management intensity across a regional scale. *Mol Ecol* **24**: 941–952.
- Gemma, J.N., Koske, R.E., and Flynn, T. (1992) Mycorrhizae in Hawaiian pteridophytes: occurrence and evolutionary significance. *Am J Bot* **79**: 843–852.
- Gianinazzi, S., Gollotte, A., Binet, M.-N., van Tuinen, D., Redecker, D., and Wipf, D. (2010) Agroecology: the key role of arbuscular mycorrhizas in ecosystem services. *Mycorrhiza* **20**: 519–530.
- Griffith, D.M., Veech, J.A., and Marsh, C.J. (2016) Cooccur: probabilistic species co-occurrence analysis in R. *J Stat Softw* **69**: 1–17.
- Hart, M.M., Reader, R.J., and Klironomos, J.N. (2001) Life-history strategies of arbuscular mycorrhizal fungi in relation to their successional dynamics. *Mycologia* **93**: 1186–1194.
- Hausmann, N.T., and Hawkes, C.V. (2009) Plant neighborhood control of arbuscular mycorrhizal community composition. *New Phytol* **183**: 1188–1200.
- van der Heijden, M.G.A., Klironomos, J.N., Ursic, M., Moutoglou, P., Streitwolf-Engel, R., Boller, T., *et al.* (1998) Mycorrhizal fungal diversity determines plant biodiversity, ecosystem variability and productivity. *Nature* **396**: 69–72.
- Herren, C.M., and McMahon, K.D. (2017) Cohesion: a method for quantifying the connectivity of microbial communities. *ISME J* **11**: 2426–2438.
- Herren, C.M., and McMahon, K.D. (2018) Keystone taxa predict compositional change in microbial communities. *Environ Microbiol* **20**: 2207–2217.
- HilleRisLambers, J., Adler, P.B., Harpole, W.S., Levine, J.M., and Mayfield, M.M. (2012) Rethinking community assembly through the lens of coexistence theory. *Annu Rev Ecol Syst* **43**: 227–248.
- Hodge, A., Helgason, T., and Fitter, A.H. (2010) Nutritional ecology of arbuscular mycorrhizal fungi. *Fungal Ecol* **3**: 267–273.
- Holmes, I., Harris, K., and Quince, C. (2012) Dirichlet multinomial mixtures: generative models for microbial metagenomics. *PLoS One* **7**: e30126.
- Horn, S., Caruso, T., Verbruggen, E., Rillig, M.C., and Hempel, S. (2014) Arbuscular mycorrhizal fungal communities are phylogenetically clustered at small scales. *ISME J* **8**: 2231–2242.
- Horn, S., Hempel, S., Verbruggen, E., Rillig, M.C., and Caruso, T. (2017) Linking the community structure of arbuscular mycorrhizal fungi and plants: a story of interdependence? *ISME J* **11**: 1400–1411.

- Huang, Z., Zhao, F., Hua, J., and Ma, Z. (2018) Prediction of the distribution of arbuscular mycorrhizal fungi in the metal(loid)-contaminated soils by the arsenic concentration in the fronds of *Pteris vittata* L. *J Soil Sediment* **18**: 2544–2551.
- Johnson, D., Vandenkoornhuyse, P.J., Leake, J.R., Gilbert, L., Booth, R.E., Grime, J.P., et al. (2004) Plant communities affect arbuscular mycorrhizal fungal diversity and community composition in grassland microcosms. *New Phytol* **161**: 503–515.
- Jousset, A., Bienhold, C., Chatzinotas, A., Gallien, L., Gobet, A., Kurm, V., et al. (2017) Where less may be more: how the rare biosphere pulls ecosystems strings. *ISME J* **11**: 853–862.
- Kivlin, S.N., Hawkes, C.V., and Treseder, K.K. (2011) Global diversity and distribution of arbuscular mycorrhizal fungi. *Soil Biol Biochem* **43**: 2294–2303.
- Kovács, G.M., Balázs, T., and Péntes, Z. (2007) Molecular study of arbuscular mycorrhizal fungi colonizing the sporophyte of the eusporangiate rattlesnake fern (*Botrychium virginianum*, Ophioglossaceae). *Mycorrhiza* **17**: 597–605.
- Kozich, J.J., Westcott, S.L., Baxter, N.T., Highlander, S.K., and Schloss, P.D. (2013) Development of a dual-index sequencing strategy and curation pipeline for analyzing amplicon sequence data on the miseq illumina sequencing platform. *Appl Environ Microbiol* **79**: 5112–5120.
- Kreft, H., Jetz, W., Mutke, J., and Barthlott, W. (2010) Contrasting environmental and regional effects on global pteridophyte and seed plant diversity. *Ecography (Cop)* **33**: 408–419.
- Kuczynski, J., Liu, Z., Lozupone, C., McDonald, D., Fierer, N., and Knight, R. (2010) Microbial community resemblance methods differ in their ability to detect biologically relevant patterns. *Nat Methods* **7**: 813–819.
- Landolt, E., Bäumler, B., Erhardt, A., Hegg, O., Klötzli, F., Lämmler, W., et al. (2010) Flora indicativa - Ökologische zeigerwerte und biologische kennzeichen zur flora der Schweiz und der Alpen, Haupt (ed) Bern.
- Leake, J.R. (2005) Plants parasitic on fungi: unearthing the fungi in myco-heterotrophs and debunking the 'saprophytic' plant myth. *Mycologist* **19**: 113–122.
- Lehnert, M., Krug, M., and Kessler, M. (2017) A review of symbiotic fungal endophytes in lycophytes and ferns – a global phylogenetic and ecological perspective. *Symbiosis* **71**: 77–89.
- Lekberg, Y., Meadow, J., Rohr, J.R., Redecker, D., and Zabinski, C.A. (2011) Importance of dispersal and thermal environment for mycorrhizal communities: lessons from Yellowstone National Park. *Ecology* **92**: 1292–1302.
- Liu, R.-J., Zhang, Y., and Guo, L.-D. (2004) Arbuscular mycorrhizal fungi associated with common pteridophytes in Duijiangyan, Southwest China. *Mycorrhiza* **14**: 25–30.
- Maccagni, A., Parisod, C., and Grant, J.R. (2017) Phylogeography of the moonwort fern *Botrychium lunaria* (Ophioglossaceae) based on chloroplast DNA in the central-European mountain system. *Alp Bot* **127**: 185–196.
- Maherali, H., and Klironomos, J.N. (2007) Influence of phylogeny on fungal community assembly and ecosystem functioning. *Science (80- )* **316**: 1746–1748.
- Maherali, H., and Klironomos, J.N. (2012) Phylogenetic and trait-based assembly of arbuscular mycorrhizal fungal communities. *PLoS One* **7**: e36695.
- McMurdie, P.J., and Holmes, S. (2013) phyloseq: an R package for reproducible interactive analysis and graphics of microbiome census data. *PLoS One* **8**: e61217.
- Merckx, V., Bidartondo, M.I., and Hynson, N.A. (2009) Myco-heterotrophy: when fungi host plants. *Ann Bot* **104**: 1255–1261.
- Morton, J.B. (1986) Three new species of Acaulospora (Endogonaceae) from high aluminum, low pH soils in West Virginia. *Mycologia* **78**: 641–648.
- Muller, S. (1999) Plant communities and conservation of Botrychium-rich grasslands in the Bitcherland (Northern Vosges Biosphere Reserve, France). *Biodivers Conserv* **8**: 1519–1532.
- Muthukumar, T., and Prabha, K. (2013) Arbuscular mycorrhizal and septate endophyte fungal associations in lycophytes and ferns of South India. *Symbiosis* **59**: 15–33.
- Oehl, F., and Körner, C. (2014) Multiple mycorrhization at the coldest place known for angiosperm plant life. *Alp Bot* **124**: 193–198.
- Oehl, F., Schneider, D., Sieverding, E., and Burga, C.A. (2011) Succession of arbuscular mycorrhizal communities in the foreland of the retreating Morteratsch glacier in the Central Alps. *Pedobiologia (Jena)* **54**: 321–331.
- Oksanen, J., Blanchet, F.G., Kindt, R., Legendre, P., O'Hara, R.B., Simpson, G.L., et al. (2012) vegan: Community ecology package. *R Packag version 1*: R package.
- Opik, M., Vanatoa, A., Vanatoa, E., Moora, M., Davison, J., Kalwij, J.M., et al. (2010) The online database MaarjAM reveals global and ecosystemic distribution patterns in arbuscular mycorrhizal fungi (Glomeromycota). *New Phytol* **188**: 223–241.
- Ponge, J.-F. (2003) Humus forms in terrestrial ecosystems: a framework to biodiversity. *Soil Biol Biochem* **35**: 935–945.
- Ponge, J.-F. (2013) Plant–soil feedbacks mediated by humus forms: a review. *Soil Biol Biochem* **57**: 1048–1060.
- Powell, J.R., and Rillig, M.C. (2018) Biodiversity of arbuscular mycorrhizal fungi and ecosystem function. *New Phytol* **220**: 1059–1075.
- Pressel, S., Bidartondo, M.I., Field, K.J., Rimington, W.R., and Duckett, J.G. (2016) Pteridophyte fungal associations: current knowledge and future perspectives. *J Syst Evol* **54**: 666–678.
- Pryer, K.M., Schuettpelz, E., Wolf, P.G., Schneider, H., Smith, A.R., and Cranfill, R. (2004) Phylogeny and evolution of ferns (monilophytes) with a focus on the early leptosporangiate divergences. *Am J Bot* **91**: 1582–1598.
- Read, D.J., and Haselwandter, K. (1981) Observations on the mycorrhizal status of some alpine plant communities. *New Phytol* **88**: 341–352.
- Rillig, M.C. (2004) Arbuscular mycorrhizae and terrestrial ecosystem processes. *Ecol Lett* **7**: 740–754.
- Rivera-Pinto, J., Egozcue, J.J., Pawlowsky-Glahn, V., Paredes, R., Noguera-Julian, M., and Calle, M.L. (2018) Balances: a new perspective for microbiome analysis. *mSystems* **3**: e00053–e00018.
- Russell, J., and Bulman, S. (2004) The liverwort *Marchantia foliacea* forms a specialized symbiosis with arbuscular

- mycorrhizal fungi in the genus *glomus*. *New Phytol* **165**: 567–579.
- Sato, K., Suyama, Y., Saito, M., and Sugawara, K. (2005) A new primer for discrimination of arbuscular mycorrhizal fungi with polymerase chain reaction-denature gradient gel electrophoresis. *Grassl Sci* **51**: 179–181.
- Schloss, P.D. (2008) Evaluating different approaches that test whether microbial communities have the same structure. *ISME J* **2**: 265–275.
- Schloss, P.D., Westcott, S.L., Ryabin, T., Hall, J.R., Hartmann, M., Hollister, E.B., *et al.* (2009) Introducing mothur: open-source, platform-independent, community-supported software for describing and comparing microbial communities. *Appl Environ Microbiol* **75**: 7537–7541.
- Schmid, E., and Oberwinkler, F. (1994) Light and electron microscopy of the host-fungus interaction in the achlorophyllous gametophyte of *Botrychium lunaria*. *Can J Bot* **72**: 182–188.
- Schmitz, A.M., and Harrison, M.J. (2014) Signaling events during initiation of arbuscular mycorrhizal symbiosis. *J Integr Plant Biol* **56**: 250–261.
- Schüßler, A., Schwarzott, D., and Walker, C. (2001) A new fungal phylum, the Glomeromycota: phylogeny and evolution. *Mycol Res* **105**: 1413–1421.
- Selosse, M.-A., and Roy, M. (2009) Green plants that feed on fungi: facts and questions about mixotrophy. *Trends Plant Sci* **14**: 64–70.
- Sepp, S., Davison, J., Jairus, T., Vasar, M., Moora, M., Zobel, M., and Öpik, M. (2019) Non-random association patterns in a plant–mycorrhizal fungal network reveal host–symbiont specificity. *Mol Ecol* **28**: 365–378.
- Smith, A.R., Pryer, K.M., Schuettelpelz, E., Korall, P., Schneider, H., and Wolf, P.G. (2008) Fern classification. In *Biology and Evolution of Ferns and Lycophytes*. Ranker, T.A., and Haufler, C.H. (eds). Cambridge: Cambridge University Press, pp. 417–467.
- Spatafora, J.W., Chang, Y., Benny, G.L., Lazarus, K., Smith, M.E., Berbee, M.L., *et al.* (2016) A phylum-level phylogenetic classification of zygomycete fungi based on genome-scale data. *Mycologia* **108**: 1028–1046.
- Stensvold, M.C., and Farrar, D.R. (2017) Genetic diversity in the worldwide *Botrychium lunaria* (Ophioglossaceae) complex, with new species and new combinations. *Brittonia* **69**: 148–175.
- Stürmer, S.L., Bever, J.D., and Morton, J.B. (2018) Biogeography of arbuscular mycorrhizal fungi (Glomeromycota): a phylogenetic perspective on species distribution patterns. *Mycorrhiza* **28**: 587–603.
- Sykorová, Z., Wiemken, A., and Redecker, D. (2007) Cooccurring *Gentiana verna* and *Gentiana acaulis* and their neighboring plants in two Swiss upper montane meadows harbor distinct arbuscular mycorrhizal fungal communities. *Appl Environ Microbiol* **73**: 5426–5434.
- Thonar, C., Frossard, E., Šmilauer, P., and Jansa, J. (2014) Competition and facilitation in synthetic communities of arbuscular mycorrhizal fungi. *Mol Ecol* **23**: 733–746.
- Treseder, K.K., and Cross, A. (2006) Global distributions of arbuscular mycorrhizal fungi. *Ecosystems* **9**: 305–316.
- Vályi, K., Mardhiah, U., Rillig, M.C., and Hempel, S. (2016) Community assembly and coexistence in communities of arbuscular mycorrhizal fungi. *ISME J* **10**: 2341–2351.
- Vályi, K., Rillig, M.C., and Hempel, S. (2015) Land-use intensity and host plant identity interactively shape communities of arbuscular mycorrhizal fungi in roots of grassland plants. *New Phytol* **205**: 1577–1586.
- Veech, J.A. (2013) A probabilistic model for analysing species co-occurrence. *Glob Ecol Biogeogr* **22**: 252–260.
- Veresoglou, S.D., and Rillig, M.C. (2012) Suppression of fungal and nematode plant pathogens through arbuscular mycorrhizal fungi. *Biol Lett* **8**: 214–217.
- Wang, Y., Naumann, U., Wright, S.T., and Warton, D.I. (2012) mvabund - an R package for model-based analysis of multivariate abundance data. *Methods Ecol Evol* **3**: 471–474.
- West, B., Brandt, J., Holstien, K., Hill, A., and Hill, M. (2009) Fern-associated arbuscular mycorrhizal fungi are represented by multiple *glomus* spp.: do environmental factors influence partner identity? *Mycorrhiza* **19**: 295–304.
- Westcott, S.L., and Schloss, P.D. (2017) OptiClust, an improved method for assigning amplicon-based sequence data to operational taxonomic units. *mSphere* **2**: e00073–e00017.
- Winther, J.L., and Friedman, W.E. (2008) Arbuscular mycorrhizal associations in Lycopodiaceae. *New Phytol* **177**: 790–801.
- Winther, J.L., and Friedman, W.E. (2007) Arbuscular mycorrhizal symbionts in *Botrychium* (Ophioglossaceae). *Am J Bot* **94**: 1248–1255.
- Xiang, X., Gibbons, S.M., He, J.-S., Wang, C., He, D., Li, Q., *et al.* (2016) Rapid response of arbuscular mycorrhizal fungal communities to short-term fertilization in an alpine grassland on the Qinghai-Tibet plateau. *PeerJ* **4**: e2226.
- Zobel, M., and Öpik, M. (2014) Plant and arbuscular mycorrhizal fungal (AMF) communities - which drives which? *J Veg Sci* **25**: 1133–1140.

## Supporting Information

Additional Supporting Information may be found in the online version of this article at the publisher's web-site:

**Appendix S1:** Supplementary Information about the experimental procedures and related references.

**Figure S1 A.** Schematic view of a sampling plot showing the dimensions and spatial organization of its three quadrats. **B.** Photography of a quadrat, in each of them the floristic composition was assessed, and *B. lunaria* root samples and associated rhizospheric soil were sampled.

**Figure S2 A.** Rarefaction curves of the 71 AMF samples. **B.** Sample-based OTUs accumulation curve.

**Figure S3** Alpha diversity metrics (observed richness, Shannon diversity and the inverse of Simpson index) in the four transects.

**Figure S4** Linear relationship between the richness of the neighbouring plants surrounding *B. lunaria* sporophytes and the soil pH. The solid blue line shows the fit of the linear model and the shaded area corresponds to the point wise 95% confidence interval on the fitted values. *R* corresponds to the Pearson's product-moment correlation.

**Figure S5** AMF OTU signature of the different community types based on compositional balances computed with the *selbal* algorithm. The two groups of OTUs that form the

global balance are specified at the top of the plot. The box plot represents the distribution of the balance scores for community type A and B samples. The right part of the figure contains the receiver operating characteristic (ROC) curve with its area under the curve (AUC) value (1) and the density curve for each community type.

**Figure S6** Values of the four significant variables impacting the AMF community composition, namely pH, humus cover (Landolt's indicator H), positive cohesion and negative cohesion, for the community type A and B. Statistical significance

between the two community types was tested by the Wilcoxon signed-rank test.

**Table S1** Edaphic and floristic parameters measured on each sampling site.

**Table S2** Summary of the number of significantly positive co-occurrences detected between AMF OTUs ( $p < 0.05$ ). Results are presented at the genus level.

**Table S3** Summary of the number of significantly negative co-occurrences detected between AMF OTUs ( $p < 0.05$ ). Results are presented at the genus level.