



**HAL**  
open science

## Blood mercury concentrations in four sympatric gull species from South Western France: Insights from stable isotopes and biologging

William Jouanneau, Manrico Sebastiano, David Rozen-Rechels, Stephanie Harris, Pierre Blévin, Frédéric Angelier, François Brischoux, Julien Gernigon, Jean-Christophe Lemesle, Frédéric Robin, et al.

### ► To cite this version:

William Jouanneau, Manrico Sebastiano, David Rozen-Rechels, Stephanie Harris, Pierre Blévin, et al.. Blood mercury concentrations in four sympatric gull species from South Western France: Insights from stable isotopes and biologging. *Environmental Pollution*, 2022, 308, pp.119619. 10.1016/j.envpol.2022.119619 . hal-03700587

**HAL Id: hal-03700587**

**<https://hal.science/hal-03700587>**

Submitted on 14 Nov 2022

**HAL** is a multi-disciplinary open access archive for the deposit and dissemination of scientific research documents, whether they are published or not. The documents may come from teaching and research institutions in France or abroad, or from public or private research centers.

L'archive ouverte pluridisciplinaire **HAL**, est destinée au dépôt et à la diffusion de documents scientifiques de niveau recherche, publiés ou non, émanant des établissements d'enseignement et de recherche français ou étrangers, des laboratoires publics ou privés.

1 Blood mercury concentrations in four sympatric gull species from  
2 South Western France: insights from stable isotopes and biologging

3

4 William Jouanneau <sup>a,\*</sup>, Manrico Sebastiano <sup>b,c</sup>, David Rozen-Rechels <sup>d</sup>, Stephanie M. Harris  
5 <sup>e,f</sup>, Pierre Blévin <sup>a,g</sup>, Frédéric Angelier <sup>a</sup>, François Brischoux <sup>a</sup>, Julien Gernigon <sup>h</sup>, Jean-  
6 Christophe Lemesle <sup>h</sup>, Frédéric Robin <sup>h</sup>, Yves Chereh <sup>a</sup>, Paco Bustamante <sup>ij</sup>, Olivier Chastel  
7 <sup>a</sup>

8

9 <sup>a</sup> Centre d'Etudes Biologiques de Chizé (CEBC), UMR 7372 CNRS & La Rochelle  
10 Université, 79360 Villiers-en-Bois, France

11 <sup>b</sup> Unité Physiologie Moléculaire et Adaptation, Muséum National d'Histoire Naturelle,  
12 UMR 7221 CNRS/MNHN, 7 rue Cuvier 75005 Paris, France

13 <sup>c</sup> Behavioural Ecology and Ecophysiology group, University of Antwerp, Antwerp,  
14 Belgium

15 <sup>d</sup> Sorbonne Université, CNRS, IRD, INRAE, Université Paris Est Créteil, Institut  
16 d'écologie et des sciences de l'environnement de Paris (iEES-Paris), Paris, France

17 <sup>e</sup> School of Ocean Sciences, College of Environmental Science and Engineering, Bangor  
18 University, Menai Bridge, LL59 5AB, United Kingdom

19 <sup>f</sup> Cornell Lab of Ornithology, Cornell University, 159 Sapsucker Woods Road, Ithaca, USA

20 <sup>g</sup> Akvaplan-niva AS, Fram Centre, P.O. Box 6606 Langnes, 9296 Tromsø, Norway

21 <sup>h</sup> Ligue pour la Protection des Oiseaux (LPO), 17300 Rochefort, France

22 <sup>i</sup> Littoral Environnement et Sociétés, LIENSs, Univ. La Rochelle, CNRS, 17000 La  
23 Rochelle, France

24 <sup>j</sup> Institut Universitaire de France (IUF), 1 rue Descartes 75005 Paris, France

25 **ABSTRACT**

26 Mercury (Hg) is a toxic trace element widely distributed in the environment, which  
27 particularly accumulates in top predators, including seabirds. Among seabirds, large gulls  
28 (*Larus sp*) are generalist feeders, foraging in both terrestrial and marine habitats, making  
29 them relevant bioindicators of local coastal Hg contamination. In the present study, we  
30 reported blood Hg concentrations in adults and chicks of four different gull species  
31 breeding on the French Atlantic coast: the European herring gull (*Larus argentatus*), the  
32 Lesser black-backed gull (*L. fuscus*), the Great black-backed gull (*L. marinus*) and the  
33 Yellow-legged gull (*L. michahellis*). We also investigated the potential role of foraging  
34 ecology in shaping Hg contamination across species, using the unique combination of three  
35 dietary tracers (carbon, nitrogen and sulfur stable isotopes) and biologging (GPS tracking).  
36 A high concentration of Hg was associated with high trophic position and a marine diet in  
37 gulls, which was corroborated by birds' space use strategy during foraging trips. Adults of  
38 all four species reached Hg concentrations above reported toxicity thresholds. Specifically,  
39 adults of Great black-backed gulls had a high trophic marine specialized diet and  
40 significantly higher Hg concentrations than the three other species. Blood Hg was 4 to 7  
41 times higher in adults than in chicks, although chicks of all species received mainly marine  
42 and high trophic position prey, which is expected to be the cause of blood Hg  
43 concentrations of toxic concern. By using both stable isotopes and GPS tracking, the  
44 present study provides compelling insights on the main feeding habits driving Hg  
45 contamination in a seabird assemblage feeding in complex coastal environments.

46

47 Key words: Contaminant, Trace element, Seabird, Habitat, Movement ecology, Stable  
48 isotopes

49 **INTRODUCTION**

50 Mercury (Hg) is a non-essential trace element released by both natural and  
51 anthropogenic processes (Pirrone et al., 2010). Organic Hg (mostly methylmercury; MeHg)  
52 is the main bioavailable and toxic form for living organisms (Díez, 2008; Thompson and  
53 Furness, 1989). MeHg is incorporated in organisms mainly via ingestion of contaminated  
54 food (Eagles-Smith et al., 2018). In birds, accumulation of MeHg has been associated with  
55 a wide range of behavioral and physiological detrimental consequences, impacting  
56 individual fitness, and ultimately, population dynamics (Tan et al., 2009; Whitney and  
57 Cristol, 2017). Due to a relatively long biological half-life in tissues (Stickel et al., 1977),  
58 Hg tends to bioaccumulate in organisms over time and biomagnify up trophic food webs,  
59 leading long-lived top predators to exhibit elevated Hg concentrations (Atwell et al., 1998;  
60 Cherel et al., 2018; Evers et al., 2005). In coastal environments, seabirds are therefore  
61 considered as excellent sentinels of the local contamination (Burger and Gochfeld, 2004;  
62 Furness and Camphuysen, 1997; Monteiro and Furness, 1995).

63 Seabirds show a large interspecific variation in foraging strategies (Ceia and  
64 Ramos, 2015), leading to varied degrees of Hg exposure among species (Carravieri et al.,  
65 2014b; Monteiro et al., 1998; Stewart et al., 1997). Large gulls of the *Larus* genus are  
66 omnivorous and opportunistic feeders. *Larus* spp. are known to exploit both marine and  
67 terrestrial habitats, and can scavenge from multiple anthropogenic sources including waste  
68 dumps, landfill sites and fishing discards, as well as predated upon eggs or chicks  
69 (Buckley, 1990; Mudge and Ferns, 1982; Ramos et al., 2009). Assessing Hg concentrations  
70 in sympatric *Larus* species with differences in foraging ecology thus enables to have an  
71 overview of the local environmental contamination, particularly in complex coastal

72 habitats (Binkowski et al., 2020). Additionally, in seabirds, individual variation in foraging  
73 behavior appears to be highly prevalent, with individuals differing in their resource use,  
74 habitat selection, and their fidelity to foraging sites (Ceia and Ramos, 2015; Phillips et al.,  
75 2017). Such variation in foraging behavior may be consistent over time, and linked to  
76 individuals' characteristics, such as their age or sex (Bolnick et al., 2003). As Hg exposure  
77 largely varies with feeding strategies and habitat use, this variability shapes intraspecific  
78 differences in Hg contamination (Bustamante et al., 2016; Ceia and Ramos, 2015; Stewart  
79 et al., 1997), with consequences for individual fitness. Characterizing foraging ecology at  
80 the individual level is therefore essential to understand patterns of Hg contamination within  
81 and among species.

82 Tracking devices, including Global Positioning System (GPS) loggers, enable fine  
83 scale monitoring of an animal's movements, which facilitates a direct characterization of  
84 its habitat use (Burger and Shaffer, 2008). Furthermore, recently developed analytical tools  
85 - including hidden Markov models (HMMs) - facilitate behavioral classification of GPS  
86 tracking data (Langrock et al., 2012), enabling the identification of the precise locations  
87 and habitats in which animals are foraging. The analysis of stable isotopes – used as a  
88 proxy for the trophic niche (Newsome et al., 2007) – can also represent an effective tool to  
89 define the foraging habitats (carbon:  $\delta^{13}\text{C}$  and sulfur:  $\delta^{34}\text{S}$ ) and trophic positions (nitrogen:  
90  $\delta^{15}\text{N}$ ) of seabirds (Hobson et al., 1994; Kelly, 2000; Lott et al., 2003). A marine diet is  
91 characterized by higher  $\delta^{13}\text{C}$ ,  $\delta^{15}\text{N}$  and  $\delta^{34}\text{S}$  values, as opposed to lower levels indicating  
92 terrestrial food intakes (Chisholm et al., 1982; Hobson, 1987; MacAvoy et al., 2000;  
93 Schoeninger and DeNiro, 1984). More specifically,  $\delta^{34}\text{S}$  is preferentially used to  
94 differentiate marine vs terrestrial foraging habitats, since it does not present a stepwise

95 enrichment within the food chain, and therefore shows a greater discriminating power than  
96  $\delta^{13}\text{C}$  and  $\delta^{15}\text{N}$  (Hobson, 1999; McCutchan Jr et al., 2003). This characteristic makes  $\delta^{34}\text{S}$   
97 particularly interesting to depict seabirds' use of coastal habitats. Therefore, the use of GPS  
98 trackers combined with isotopic measurements enables a holistic overview of birds'  
99 feeding strategies with respect to multiple available foraging habitats, as well as a high  
100 discriminant power (Bracey et al., 2021; Caron-Beaudoin et al., 2013; Ceia et al., 2018;  
101 Mendes et al., 2018).

102 In France, Hg contamination of seabirds has been largely documented in overseas  
103 departments and territories (e.g. French Guiana, Sebastiano et al., 2016; 2017; Scattered  
104 Islands, Kojadinovic et al. 2007a; Réunion Island, Kojadinovic et al. 2007b; 2007c) and  
105 French Southern and Antarctic Territories (e.g., Blévin et al., 2013; Carravieri et al., 2014;  
106 2016; Goutte et al., 2014a; 2014b; Tartu et al., 2014; 2015a). Although the coasts of  
107 metropolitan France host large numbers of breeding seabirds (e.g., 174 000 pairs, Cadiou,  
108 2011), data on Hg concentrations in seabird tissues are scarce and limited to chicks of four  
109 gull species (*Larus argentatus*, *Larus fuscus*, *Larus marinus* and *Larus michahellis*) from  
110 the Southern Bay of Biscay and the English Channel (Binkowski et al., 2020; Zorrozueta et  
111 al., 2020). In these studies, high blood Hg concentrations were associated with a diet of  
112 marine origin and of high trophic position. Yet, our knowledge on Hg concentrations in  
113 other potentially contaminated areas remains very limited.

114 In the present study, we investigated Hg concentrations in adults and chicks of four  
115 gull species from a South Western France colony: Herring gulls *Larus argentatus*  
116 *argenteus*, Lesser black-backed gulls *L. fuscus graellsii*, Great black-backed gulls *L.*  
117 *marinus* and Yellow-legged gulls *L. michahellis*. We were particularly interested to i)



118 describe Hg concentrations of the species during the breeding period; ii) identify the factors  
119 driving inter- and intraspecific Hg variations among adults and chicks – in relation to their  
120 different feeding habitats inferred from blood  $\delta^{13}\text{C}$ ,  $\delta^{15}\text{N}$  and  $\delta^{34}\text{S}$  stable isotopes, and in  
121 relation to their individuals characteristics as age and sex; and iii) explore whether fine-  
122 scale habitat partitioning using GPS tracking further elucidates the potential variation in  
123 adult Hg contamination. Due to the known differences in foraging ecology among the four  
124 species, as well as the individual differences within species, we expected a high inter- and  
125 intraspecific variation in Hg concentrations. We further predicted that i) individuals feeding  
126 at higher trophic positions (indicated by higher  $\delta^{15}\text{N}$  values) or foraging in marine habitats  
127 (indicated by both high  $\delta^{13}\text{C}$  and  $\delta^{34}\text{S}$  values, as well as GPS tracking) would exhibit higher  
128 Hg concentrations; and that ii) these patterns would persist both between and within  
129 species.

130

## 131 **MATERIALS AND METHODS**

### 132 **Field methodology**

133 In the breeding seasons of 2016-2019, we sampled gulls breeding in “Lilleau des  
134 Niges” National Nature reserve, Ile de Ré, South Western France (46°13'53" N, 1°30'22"  
135 W; Figure 1): European herring gulls (EHG, approx. 400 pairs), Lesser black-backed gulls  
136 (LBBG, approx. 400 pairs), Great black-backed gulls (GBBG, approx. 200 pairs), and  
137 Yellow-legged gull (YLG, approx. 100 pairs). Adult birds were sampled in May ( $n = 140$ ),  
138 and chicks in July ( $n = 107$ ). All individuals were captured and sampled only once over the  
139 four years. Annual sample sizes for adults and chicks of each species can be found in the  
140 Supporting Information (SI) Table S1. Adults incubating a full-size clutch (i.e. 2 to 3 eggs)

141 were caught on their nests, using a trap placed over the eggs. Chicks of approximately 1  
142 month of age were caught by hand, within the colony. From an early age, gull chicks are  
143 developed enough to explore their environment and do not stay in their nest, therefore we  
144 were unable to assign relatedness among chicks and adults. Skull and tarsus were measured  
145 using a caliper ( $\pm 0.1$  mm). Wing length was also measured using a ruler ( $\pm 1$  mm), and  
146 birds were weighted using a Pesola spring balance ( $\pm 5$ g). Blood samples (2 mL,  $<1$  % of  
147 the body mass of LBBG, the smallest species in this study) were taken from the brachial  
148 vein of adults and chicks using heparinized syringes. Blood was transferred into a 2 mL  
149 Eppendorf<sup>®</sup> tube and immediately stored in a cool box. At the end of each sampling day,  
150 whole blood was centrifuged and red blood cells (hereafter “blood”) were stored at  $-20^{\circ}\text{C}$   
151 until laboratory analyses. Blood samples were then used to measure Hg and stable isotopes  
152 and for molecular sexing.

153

#### 154 **Mercury analysis**

155         The analysis of total Hg in lyophilized blood was carried out using an Altec AMA  
156 254 spectrophotometer following Bustamante et al. (2006). Each sample (mass:  $\sim 0.5$  mg  
157 dry weight, dw) was analysed twice and Hg concentrations were then averaged. For each  
158 individual, the relative standard deviation was  $<10$  %. Accuracy was checked at the  
159 beginning and the end of each measurement session using a certified reference material  
160 (2016-2018: DOLT-5 dogfish liver - Hg certified concentration (mean  $\pm$  SD):  $0.44 \pm 0.18$   
161  $\mu\text{g g}^{-1}$  dw; 2019: TORT-3 lobster hepatopancreas - Hg certified concentration:  $0.29 \pm 0.02$   
162  $\mu\text{g g}^{-1}$  dw; obtained from NRC, Canada). Recoveries were respectively  $0.422 \pm 0.005$  and  
163  $0.318 \pm 0.014 \mu\text{g g}^{-1}$  dw. Blanks were also run before and after each set of samples. The

164 limit of detection of the AMA was 0.1 ng. Hg concentrations are expressed as  $\mu\text{g g}^{-1}$  dw.  
165 In several bird species, MeHg represents most of the total Hg in blood (Renedo et al., 2018;  
166 Rimmer et al., 2005). Chicks accumulate Hg from hatching, being fed by their parents from  
167 local food items. For this reason, they are relevant bioindicators of the local environment  
168 contamination (Binkowski et al., 2020; Blévin et al., 2013). By contrast to chicks, using  
169 adult gulls as bioindicators of their local environment during breeding is still debated as  
170 the half-life of Hg in avian tissues is 1~3 months, and contaminants acquired during  
171 migration might still be present in blood (Bearhop et al., 2000; Monteiro and Furness, 2001;  
172 Stickel et al., 1977). However, all species used in the present study were on the breeding  
173 grounds more than 3 months before sampling, therefore blood Hg should mainly represent  
174 local contamination.

175

#### 176 **Stable isotope analysis**

177 Sub-samples of blood were weighed (mean  $\pm$  SD:  $0.29 \pm 0.06$  mg dw for  $\delta^{13}\text{C}$  and  
178  $\delta^{15}\text{N}$ ;  $0.71 \pm 0.05$  mg dw for  $\delta^{34}\text{S}$ ) with a microbalance and then packed into tin containers  
179 for combustion. Relative abundances of carbon, nitrogen and sulfur isotopes were  
180 measured using a continuous flow mass spectrometer (Thermo Scientific Delta V  
181 Advantage) coupled with an elemental analyzer (carbon and nitrogen: Thermo Scientific  
182 Flash EA 1112; sulfur: Thermo Scientific Flash IRMS EA IsoLink). The delta ( $\delta$ ) notation  
183 relative to Vienna PeeDee Belemnite, atmospheric  $\text{N}_2$  and Vienna Cañon Diablo troilite  
184 for  $\delta^{13}\text{C}$ ,  $\delta^{15}\text{N}$  and  $\delta^{34}\text{S}$  respectively, was used to present isotopic results. Accuracy was  
185 checked by replicate measurements of the internal laboratory standard, and analytical  
186 precision was  $<0.10$  ‰ for  $\delta^{13}\text{C}$ ,  $<0.15$  ‰ for  $\delta^{15}\text{N}$  and  $<0.20$  ‰ for  $\delta^{34}\text{S}$  values. The stable

187 isotopes values were computed as  $\delta X = \left[ \left( \frac{R_{Sample}}{R_{Standard}} \right) - 1 \right] \times 1000$ , where X stands for  $^{13}\text{C}$ ,  
188  $^{15}\text{N}$  or  $^{34}\text{S}$  and  $R$  being the ratio  $^{13}\text{C}/^{12}\text{C}$ ,  $^{15}\text{N}/^{14}\text{N}$  or  $^{34}\text{S}/^{32}\text{S}$ . Turnover time for  $\delta^{13}\text{C}$  and  $\delta$   
189  $^{15}\text{N}$  in blood is 11~30 days (Barquete et al., 2013; Hobson and Clark, 1992; 1993), therefore  
190 stable isotopes values are representative of the breeding period in adults.

191

## 192 **GPS tracking analysis**

193 A subset ( $n = 43$ ) of the captured adults (18 EHG, 18 LBBG and 7 GBBG, see SI Table S1)  
194 were equipped with GPS-UHF loggers (HARRIER, Ecotone<sup>®</sup>) in 2017 and 2018. Among  
195 the 43 GPS equipped birds, 17 EHG, 18 LBBG and 6 GBBG were blood sampled and  
196 included in Hg and stable isotopes analyses. The total mass of the logger and the harness  
197 (used for attachment) weighted on average 13g (i.e. <2 % of the body mass of LBBG, the  
198 smallest species in this study).

199 GPS loggers were set to record locations every 5 min. For each tracked individual,  
200 locations were filtered to the period between the day after blood sampling to the last day  
201 before either nest failure or egg hatching had been recorded (Figure 1 & SI Figure S1 &  
202 Table S2). Foraging sites were identified from GPS tracks by assigning a behavioral state  
203 to each location using Hidden Markov Models (hereafter “HMMs”, Franke et al. 2004)  
204 fitted using the moveHMM R package (Michelot et al., 2016). Additional information on  
205 the spatial data treatment and the behavioral classification can be found in the SI. The  
206 habitat for each of these locations was assigned as either “pelagic”; “coastal” (i.e. lagoons,  
207 estuaries, coastal salt marshes, intertidal flats), or “terrestrial” (all others) based on the  
208 CORINE Land Cover dataset (CORINE Land Cover; Feranec et al. 2016). Ratios of pelagic  
209 vs coastal and marine (i.e., pelagic and coastal) vs terrestrial habitats used by each

210 individual were then calculated.

211 For an overview of the feeding behaviors leading to the observed Hg concentrations  
212 in the tracked species, we estimated birds' foraging site fidelity. As well as giving important  
213 insight into the degree of specialization in birds' uses of foraging habitat, this measure of  
214 site fidelity served to test whether individuals' foraging behavior in the period after blood  
215 sampling was likely to be representative of their behavior prior to blood sampling (see SI).  
216 Individual foraging site fidelity was assessed following the randomization procedure of  
217 Harris et al. (2020). For each foraging site, the distance to a randomly selected site from  
218 the same individual during another trip (within-individual comparison), as well as to a  
219 randomly selected site from each other individual of the same species (between-individual  
220 comparisons) was measured. The site fidelity index corresponds to the proportion of  
221 between-individual sites that were farther from the focal site than the within-individual  
222 site. This index is bounded between 0 and 1, with high values representing high site fidelity  
223 (an individual forages more closely to its own foraging sites than to the sites of other  
224 individuals), and low values representing low site fidelity (an individual forages more  
225 closely to the foraging sites of other individuals than to its own foraging sites). Additional  
226 information can be found in the SI.

227

### 228 **Molecular sexing**

229 All adults and chicks ( $n = 247$ ) were sexed using blood samples by polymerase  
230 chain reaction (PCR) amplification of parts of two highly conserved genes (CHD) of sex  
231 chromosomes, following Fridolfsson and Ellegren (1999).

232

233 **Statistical analyses**

234 Statistical analyses were performed using R 4.0.0 (R Core Team, 2020). One YLG  
235 chick was removed from the dataset due to outliers in  $\delta^{13}\text{C}$  and  $\delta^{34}\text{S}$  values. In all species,  
236 adults had much higher Hg concentrations than chicks, and therefore chicks and adults  
237 were treated separately.

238 Firstly, relationships between Hg concentrations and diet (inferred by stable isotope  
239 values) were investigated. As  $\delta^{13}\text{C}$ ,  $\delta^{15}\text{N}$  and  $\delta^{34}\text{S}$  were positively correlated in adults  
240 (Pearson correlation  $>0.70$ ,  $p < 0.001$  for all relationships) and partially correlated in chicks  
241 (correlation: C-N = 0.72,  $p < 0.001$ ; S-C = -0.15; S-N = -0.18, both  $p > 0.05$ ), principal  
242 components analyses (“FactoMineR” R package, version 2.3; Lê et al., 2008) were  
243 performed on the three isotopes to reduce the number of explanatory variables. Principal  
244 components (PCs) which explained more than 80 % of the total variance were retained. In  
245 adults, principal components analysis reduced  $\delta^{13}\text{C}$ ,  $\delta^{15}\text{N}$  and  $\delta^{34}\text{S}$  to one PC (PC<sub>1</sub>)  
246 explaining 83.6 % of the variance and equally influenced by  $\delta^{13}\text{C}$ ,  $\delta^{15}\text{N}$  and  $\delta^{34}\text{S}$  (SI Figure  
247 S2 & Table S3). High PC<sub>1</sub> scores reflected high  $\delta^{13}\text{C}$ ,  $\delta^{15}\text{N}$  and  $\delta^{34}\text{S}$ . In chicks, principal  
248 components analyses reduced  $\delta^{13}\text{C}$ ,  $\delta^{15}\text{N}$  and  $\delta^{34}\text{S}$  to two PCs explaining 92.0 % of the  
249 variance (SI Figure S2 & Table S3). High PC<sub>1</sub> scores indicated high  $\delta^{13}\text{C}$  and  $\delta^{15}\text{N}$  values,  
250 and high PC<sub>2</sub> scores indicated high  $\delta^{34}\text{S}$  values. The isotopic niches, which are essential  
251 for an overview of each species’ local feeding habits, were investigated, and the foraging  
252 ecology of each species were illustrated and described in the SI. Generalized least square  
253 (GLS) models were then used to investigate the effects of the selected PCs on Hg (“nlme”  
254 R package, version 3.1-151; Pinheiro et al., 2020). For that, using Hg as the response  
255 variable, we included as explanatory covariates the selected PCs and the species. Year was

256 not included as a predictor in the models to improve statistical power, and also because  
257 four years of sampling was insufficient to evaluate temporal trends in Hg concentration.  
258 We used GLS models instead of linear models (LM) due to heteroscedasticity in Hg  
259 concentrations among species (see SI for further information). For both adults and chicks,  
260 after running GLS models, Tukey post-hoc pairwise comparison tests were performed to  
261 quantify the differences in Hg concentrations among species (“emmeans” R package,  
262 version 1.7.1-1; Lenth et al., 2021). Although performed on only three variables, PCA  
263 enabled the inclusion of ecological information provided by the three stable isotopes rather  
264 than exploring the effect of each stable isotopes in independent models (similar conclusions  
265 were obtained using both methods, see SI)

266         Secondly, as Hg levels were found to be highly variable among species, we ran one  
267 LM per species to investigate differences between the sexes. With Hg as the response  
268 variable, we included the sex as an explanatory variable. This model was not fitted for  
269 adults of YLG as only a single female was sampled. In previous studies, chick age has been  
270 found to be a key predictors of Hg contamination, as blood Hg strongly fluctuates during  
271 chick growth, reaching highest concentrations when feathers stop growing (Spalding et al.,  
272 2000). Morphology is commonly used as a proxy of chick age, and we therefore also  
273 included the skull length (head and bill) in the LMs for chicks as an additional explanatory  
274 variable. Where Hg differed significantly between sexes, an additional LM was built to  
275 investigate whether this was linked to sex differences in diet, with the selected PCs fitted  
276 as the response and sex as an explanatory variable.

277         Finally, in GPS-tracked adults, the impact of the use of marine or terrestrial habitats  
278 on Hg concentrations was investigated using a GLS model: Hg was fitted as the response

279 variable, and the proportional use of marine vs terrestrial habitat and species (to control for  
280 the variation among species) were included as explanatory covariates. A similar model was  
281 built to investigate the impact of the use of coastal or pelagic habitats on Hg concentrations,  
282 including coastal vs pelagic habitats and species (to control for the variation among species)  
283 as explanatory covariates. Before modelling, two individuals that were tracked but not  
284 blood sampled were removed from the dataset.

285 For all models, a set of candidate models including all possible combinations of the  
286 predictors, ranging from the full model (that includes each of the stated variables) to the  
287 null model was built. In each case, the best candidate model – i.e., the one with the lowest  
288 second-order Akaike’s Information Criterion value for small sample size (AICc;  
289 “AICcmodavg” R package, version 2.2-2; Mazerolle, 2017), or the most parsimonious  
290 model among those with a  $\Delta\text{AICc} \leq 2$  – was retained for inference. Homogeneity and  
291 normality of the residuals were visually checked using plots of residuals vs fitted values  
292 and histograms of the residuals (Zuur et al., 2007). In post-hoc tests, an  $\alpha < 0.05$  threshold  
293 was used to assess the significance of the tests.

294

## 295 **RESULTS**

### 296 **Mercury in relation to feeding habits as inferred by stable isotopes**

297 In chicks, Hg concentrations ranged from  $0.27 \mu\text{g g}^{-1} \text{ dw}$  in EHG to  $3.86 \mu\text{g g}^{-1} \text{ dw}$   
298 in GBBG (Table 1). Model selection indicated that  $\text{PC}_1$  and species were significant  
299 predictors of Hg concentrations, but not  $\text{PC}_2$  (SI Table S4). Post-hoc comparison test  
300 showed that GBBG had the highest Hg concentrations, followed by YLG that was not  
301 significantly different from EHG and LBBG, but LBBG had lower Hg concentrations than



302 EHG (Tables 1 & 2, Figure 2). Chicks also exhibited a positive relationship between Hg  
303 concentration and PC<sub>1</sub> (estimate ± SE = 0.09 ± 0.03,  $t = 3.49$ ,  $p < 0.001$ ; Table 2 & Figure  
304 3). Sex was not retained as a significant predictor of Hg concentration for any species, but  
305 skull size (as a proxy for chick age) was included in the best model for GBBG only (SI  
306 Table S5), with Hg significantly increasing with skull size in this species ( $F_{1, 26} = 6.51$ ,  $p =$   
307 0.017; estimate ± SE = 0.04 ± 0.02).

308 In adults, individual blood Hg concentrations ranged from 0.89 µg g<sup>-1</sup> dw in EHG  
309 to 21.5 µg g<sup>-1</sup> dw in GBBG (Table 1). Model selection showed that PC<sub>1</sub> and species were  
310 significant predictors of Hg concentrations in adult gulls (SI Table S4). Post-hoc  
311 comparison test indicated that GBBG had the highest Hg concentrations, while lower  
312 concentrations were found in YLG, LBBG and EHG (not significantly different among  
313 them; Tables 1 & 2, Figure 2). Adults also showed a significant and positive association  
314 between Hg concentration and PC<sub>1</sub> (estimate ± SE = 0.55 ± 0.06,  $t = 9.25$ ,  $p < 0.001$ ; Table  
315 2 & Figure 3). Sex was retained for GBBG only (SI Table S5), with males having higher  
316 Hg concentrations than females in adults of this species ( $F_{1, 35} = 19.2$ ,  $p < 0.001$ ; estimate ±  
317 SE = 4.62 ± 1.05). However, sex was not retained as a significant predictor of stable  
318 isotopes in GBBG (PC<sub>1</sub>; SI Table S6).

319

### 320 **Mercury in relation to habitat use as inferred by GPS tracking**

321 From GPS tracked adults, a total of 1069 foraging trips from 43 individuals were  
322 recorded (612 in EHG, 304 in LBBG and 154 in GBBG). The three tracked species showed  
323 different patterns of habitat use: GBBG forage predominantly at sea and showed low inter-  
324 individual variation (average use of marine habitats ± SD: 0.93 ± 0.05 %), while EHG (0.63

325  $\pm 0.23$  %) and LBBG ( $0.78 \pm 0.17$  %) individuals were more spread on a gradient from  
326 strictly terrestrial to strictly marine (Figure 1 & SI Figure S3). The use of marine habitats  
327 in EHG and GBBG was mainly coastal (proportion of coastal habitats use  $\pm$  SD:  $0.58 \pm$   
328  $0.25$  and  $0.90 \pm 0.07$  respectively), while LBBG used pelagic and coastal habitats  
329 (proportion of coastal habitats use  $\pm$  SD:  $0.23 \pm 0.16$ ; Figure 1 & SI Figure S3). Model  
330 selection indicated that the proportional use of marine vs terrestrial habitats and the species  
331 were significant predictors of Hg variations (SI Table S7), Hg concentrations increased  
332 with the use of marine habitats in all three species (Estimate  $\pm$  SE =  $2.59 \pm 0.99$ ,  $t = 2.62$ ,  
333  $p = 0.01$ ; Figure 4). Conversely, the coastal vs pelagic gradient was not a significant  
334 predictor of Hg variations in the three gull species. (Table S7). GBBG, EHG and LBBG  
335 exhibited a relatively high fidelity to foraging sites (fidelity index  $\pm$  SD =  $0.71 \pm 0.18$ ;  $0.59$   
336  $\pm 0.13$  and  $0.72 \pm 0.13$  respectively).

337

## 338 **DISCUSSION**

339 Blood Hg concentrations of four sympatric gull species were investigated in  
340 relation to their foraging ecology inferred from stable isotopes  $\delta^{13}\text{C}$ ,  $\delta^{15}\text{N}$  and  $\delta^{34}\text{S}$  blood  
341 values in adults and chicks, and from GPS tracking of adult birds. High Hg concentrations  
342 were related to stable isotopes values representative of a high trophic position food, mainly  
343 of marine origin. Foraging movements tracked during breeding corroborated the  
344 relationship between Hg and the birds' foraging strategies with relation to terrestrial vs  
345 marine habitat use. All species showed foraging site fidelity, indicating a degree of  
346 specialization in their use of foraging sites, and thus high potential for consistent individual  
347 differences in contaminant level to emerge. This led some adult individuals to exceed

348 reported toxicity thresholds in all four species, particularly in GBBG, showing extremely  
349 high levels of Hg. These findings are also concerning for chicks, which predominantly  
350 receive marine food from their parents, and are therefore likely to accumulate high  
351 concentrations of Hg. Together, these results support the use of sympatric species of gulls  
352 as bioindicators of contamination in complex coastal habitats.

353

### 354 **Mercury concentrations**

355 LBBG and GBBG chicks had blood Hg concentrations similar to those from the  
356 French coast of the English Channel, although EHG chicks had higher Hg concentrations,  
357 even compared to the colonies from the Seine estuary, one of the most polluted rivers in  
358 Europe (Binkowski et al., 2020; Cossa et al., 2002). Toxicological benchmarks are usually  
359 assessed for adult birds, meaning that chicks Hg concentrations can only be compared to  
360 published thresholds from adults with caution. However, much lower blood Hg  
361 concentrations have been associated with an impaired physiological condition in LBBG  
362 chicks (lower metabolism markers, increased oxidative stress and increased anaerobic  
363 metabolism; Santos et al., 2020). In the present study, all four species showed similar Hg  
364 levels between sexes, likely because sex difference in contaminant exposure is usually  
365 visible later in life. However, in GBBG we detected increased levels of Hg with skull size  
366 (a proxy of chick age), but this result was not found in other species. Blood Hg is known  
367 to increase with the chicks age when most of the feathers have grown (Ackerman et al.,  
368 2011). This relationship may be easier to detect in GBBG as they grow larger, thus their  
369 among individual variation in size is higher than the other investigated species.

370 Hg concentrations in adults ranged from similar (EHG and LBBG) to much higher  
371 (YLG and GBBG) than in gulls from the Baltic Sea including EHG and GBBG, or Brown  
372 skuas (*Stercorarius antarcticus lonnbergi*) from three colonies of the Southern Ocean  
373 (Mills et al., 2022; Szumiło-Pilarska et al., 2017). Notably, we found GBBG to have  
374 average blood Hg concentrations similar to those of the Wandering albatross (*Diomedea*  
375 *exulans*; Anderson et al., 2009), the highest trophic position seabird in the Southern Ocean  
376 (Cherel et al., 2017) and one of the species with the highest known Hg levels worldwide  
377 (Blévin et al., 2013; Carravieri et al., 2014a; 2014b; Cherel et al., 2018). Such Hg  
378 concentrations are known to significantly impact reproduction, including breeding success  
379 in various bird species (Goutte et al., 2015; Tartu et al., 2013; 2014; 2015b; Ackerman et  
380 al., 2016). As no physiological endpoints were measured in the present study, it is not  
381 possible to directly draw conclusions on the impact of Hg concentrations of this population.  
382 Other factors may also contribute to a reduced toxicity of Hg. For instance, selenium –  
383 which was not measured in the present study – is an essential trace element which may  
384 protect birds against Hg toxicity (Dietz et al., 2000; Manceau et al., 2021). However, Hg is  
385 known to affect almost all aspects of avian physiology and life history traits (Sebastiano et  
386 al., 2022; Tartu et al., 2015a; Whitney and Cristol, 2017). We therefore emphasize further  
387 work to investigate whether the reported high blood Hg concentrations are detrimental to  
388 the different species of birds in the region. Similarly to what we observed in GBBG, higher  
389 concentrations of Hg in males than in females were previously found in other bird species  
390 (Ackerman et al., 2007; Burgess et al., 2005; La Sala et al., 2011). Interestingly, incubating  
391 GBBGs males and females were not found to differ in terms of stable isotopes  
392 concentration, suggesting diet is not the main driver of this difference. A possible

393 explanation may be represented by the fact that female gulls deposit Hg into their eggs  
394 therefore lowering their circulating contaminants (Lewis et al., 1993).

395

### 396 **Mercury concentrations in relation to foraging ecology**

397         The positive relationship between blood Hg concentrations and  $\delta^{13}\text{C}$  or  $\delta^{15}\text{N}$  values  
398 observed in gull chicks is in agreement with previous studies on the same four species in  
399 the English Channel (Binkowski et al., 2020) and the southern Bay of Biscay (Zorrozueta et  
400 al., 2020). However, blood  $\delta^{34}\text{S}$  was not found to be an important driver of Hg  
401 contamination at Ile de Ré, contrary to chicks in the English Channel (Binkowski et al.,  
402 2020) and Spain (Ramos et al., 2013). In the present study, chick isotopic values were in  
403 the highest range values of those of their parents for  $\delta^{13}\text{C}$ ,  $\delta^{15}\text{N}$  and  $\delta^{34}\text{S}$ , meaning that they  
404 predominantly received food at a higher trophic position and of marine origin. A diet shift  
405 after hatching – reflecting different food requirement before and after hatching – has  
406 previously been described in EHG and other species of gulls (Annett and Pierotti, 1989;  
407 Bukacińska et al., 1996; Pierotti and Annett, 1987). This specialized chick diet of low  
408 marine prey diversity, provided by the parents, may explain why the terrestrial vs marine  
409 gradient is not a good predictor of Hg variations in chicks.

410         Isotopic data showed that, similarly to chicks, blood Hg contamination was higher in  
411 adult gulls feeding on marine than terrestrial items. This is consistent with previous studies  
412 investigating the relationship between Hg and  $\delta^{13}\text{C}$ ,  $\delta^{15}\text{N}$  and  $\delta^{34}\text{S}$  in coastal seabirds and  
413 their prey (Gongora et al., 2018; Peterson et al., 2017). These patterns likely reflect the  
414 biomagnifying characteristics of Hg along food webs, with longer and more complex food  
415 webs in the marine environment (Bełdowska and Falkowska, 2016; Morel et al., 1998), as

416 well as that MeHg is mainly produced in the ocean (Chen et al., 2008). Conversely, some  
417 previous studies did not report such relationship in other aquatic birds (Einoder et al., 2018;  
418 Soldatini et al., 2020), however, the association between Hg and  $\delta^{13}\text{C}$  or  $\delta^{15}\text{N}$  is complex  
419 and largely depends on the species or their environments. Different environments likely  
420 differ in their  $\delta^{15}\text{N}$  baseline (Elliott et al., 2021), thus precluding comparing directly  
421 consumers'  $\delta^{15}\text{N}$  values as reflecting their trophic position. This is likely the case of gulls  
422 from Ile de Ré, meaning that any blood  $\delta^{15}\text{N}$  difference at the species or individual level  
423 must be interpreted with caution, especially if their  $\delta^{13}\text{C}$  and  $\delta^{34}\text{S}$  values indicate foraging  
424 in different habitats.

425 In the present study, EHG, LBBG and YLG showed important inter-individual  
426 variations in blood  $\delta^{13}\text{C}$ ,  $\delta^{15}\text{N}$  and  $\delta^{34}\text{S}$  values, that characterize populations of generalist  
427 species made of specialist individuals (Jaeger et al., 2009). In contrast, GBBG exhibited  
428 narrower ranges for all isotopic values, representative of a specialist species. GBBG's  
429 isotopic values were in the highest range of those of the other gull species, that characterize  
430 a diet based on marine items ( $\delta^{34}\text{S}$ : +15 to +19 ‰), whereas EHG, LBBG and YLG  
431 individuals showed a diet of mixed terrestrial, intertidal and marine sources (Nehlich, 2015;  
432 Rees et al., 1978). The very high Hg concentrations found in GBBG are therefore most  
433 likely related to its marine diet. These isotopic results are supported by the analyses of  
434 foraging trips in EHG, LBBG and GBBG, as the use of a marine habitats was related to  
435 higher blood Hg concentrations. In other species of coastal gulls equipped with tracking  
436 devices, including the American Herring gull (*Larus smithsonianus*) and the Western gull  
437 (*Larus occidentalis*), a similar pattern was recently observed, with individuals mainly  
438 foraging in marine environments exhibiting the highest Hg concentrations (Clatterbuck et

439 al., 2021; Thorne et al., 2021). EHG showed higher use of coastal foraging sites but similar  
440 Hg concentrations compared to the more pelagic LBBG. The coastal specialists GBBG  
441 also presented the highest Hg concentrations, further suggesting that “marine vs terrestrial”  
442 may represent a better gradient than “coastal vs pelagic” to explain Hg variations in gull  
443 species. As  $\delta^{34}\text{S}$  highly discriminates between terrestrial and marine habitats (McCutchan  
444 Jr et al., 2003), we further stress the importance of the use of  $\delta^{34}\text{S}$  as relevant index of  
445 foraging habitats.

446 Nevertheless, Figures 3 & 4 reveal a weaker relationship between blood Hg and  $\text{PC}_1$  in  
447 GBBGs. It was however not possible to include the interaction between  $\text{PC}_1$  and species in  
448 the models to study if this relationship was different among species, due to the relatively  
449 different range in  $\text{PC}_1$  and Hg values between GBBG and the other species. In chicks, the  
450 additive effect of maternal Hg initially transferred in the egg may contribute to blur the  
451 relationship in all species.

452 Surprisingly, the range of Hg concentrations seems to be inversely correlated to the  
453 isotopic niche width in adults, i.e., with the foraging habitat diversity. In the specialist  
454 GBBG, high fidelity to foraging sites may explain the high inter-individual variation in Hg  
455 concentration despite a narrow isotopic niche, i.e., birds feeding on a similar trophic  
456 position prey but specialized in areas of different contamination intensities (river estuarine,  
457 salt-marshes, intertidal area, open sea,...; Mitchell and Gilmour, 2008), generating  
458 individual variation in Hg exposure. EHG and LBBG also exhibited a relatively high  
459 fidelity to foraging sites, but the lower range of Hg concentrations compared to GBBG  
460 suggests that the foraging areas provided by movement analyses are important to  
461 understand the sources of Hg in specialist species.

462

## 463 **CONCLUSION**

464           In the present study, we have highlighted the need to refine ecotoxicological studies  
465 with stable isotope analyses, as the trophic position (using  $\delta^{15}\text{N}$  as a proxy) and the feeding  
466 habitat ( $\delta^{34}\text{S}$ ) were important drivers of blood Hg contamination. We also point out that not  
467 only the use of GPS data highly reflects the results on Hg concentrations and habitat  
468 selection through isotopic analyses, but it may further provides fundamental insights on  
469 inter-individual contamination through habitat fidelity. We argue for the concomitant use  
470 of both GPS and the stable isotopes method to characterize the sources of contaminants in  
471 seabirds.

472           Our results also call for a potential toxicological risk in both chicks and adults. As  
473 chicks receive high trophic position prey of marine origin from their parents, such diet  
474 could lead to Hg concentrations of concern during their development. In adults, GBBG  
475 showed particularly high concentrations of Hg due to its almost exclusively marine food.  
476 Nonetheless, several adults of all four species might be at risk as exceeded previously  
477 reported Hg toxicity thresholds. It is therefore fundamental to further investigate the  
478 potential detrimental effects of Hg exposure on physiological and life-history traits of the  
479 studied species.

480

## 481 **ACKNOWLEDGMENTS**

482           This work was funded by the Region Nouvelle-Aquitaine, France  
483 (MULTISTRESS, O. Chastel) and the CPER ECONAT. W. Jouanneau was funded by a  
484 PhD grant from La Rochelle Université. GPS loggers have been funded by the FEDER



485 Nouvelle Aquitaine. Equipment and catching authorization have been delivery by Museum  
486 d'Histoire Naturelle de Paris (MNHN). We thank M. Brault-Favrou and C. Churlaud from  
487 the Platefome Analyses Elémentaires of LIENSs for their assistance in mercury analyses,  
488 G. Guillou from the Plateforme Analyses Isotopiques of LIENSs for running stable  
489 isotopes analyses, and C. Ribout for molecular sexing (CEBC). We also acknowledge the  
490 numerous volunteers from the Ligue pour la Protection des Oiseaux (LPO) and the CEBC,  
491 for their help on the field. The IUF (Institut Universitaire de France) is acknowledged for  
492 its support to P. Bustamante as a Senior Member. This study was approved by the French  
493 Animal Ethic Committee (authorization number: APAFIS #15629-2019032823161213).  
494 We thank four anonymous reviewers for their valuable comments on this manuscript.

495

496 **CORRESPONDING AUTHOR**

497 \*William Jouanneau

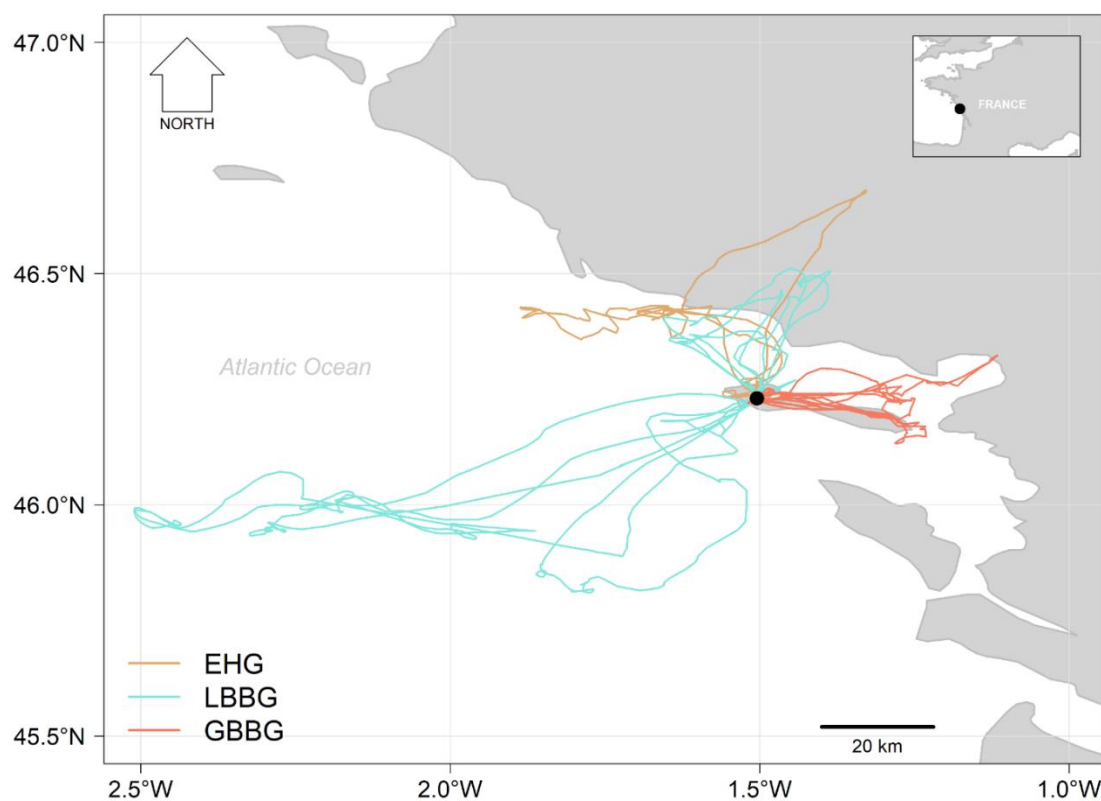
498 [w.jouanneau@gmail.com](mailto:w.jouanneau@gmail.com)

499 Centre d'Etudes Biologiques de Chizé (CEBC – CNRS/ULR)

500 405 route de Prissé la Charrière

501 79360 Villiers-en-Bois

502 **Figure 1.** Map of the Ile de Ré and surroundings, France, visited by the adults of four species of gulls from the “Lilleau des Niges”  
503 colony during their breeding period; European herring gulls (EHG), Lesser black-backed gulls (LBBG), Great black-backed gulls  
504 (GBBG) and Yellow-legged gulls (YLG). The studied colony is represented by the black point. YLG were not tracked and so are not  
505 presented, but were included in analyses of Hg and stable isotopes. Tracks presented here are a random selection of 5 trips per species,  
506 see SI Figure S1 for maps of all tracks per species.



507 **Table 1.** Hg concentrations ( $\mu\text{g g}^{-1}$  dw) and carbon ( $\delta^{13}\text{C}$ ), nitrogen ( $\delta^{15}\text{N}$ ) and sulfur ( $\delta^{34}\text{S}$ ) stable isotope values (‰) measured in blood  
 508 of adults and chicks of four gull species from the Ile de Ré, France: sample size ( $n$ ), mean  $\pm$  standard deviation ( $SD$ ), median and range  
 509 (min-max). For adults, Hg values are presented separately for females ( $\text{♀}$ ) and males ( $\text{♂}$ ).

		Adults							
	$n$	Hg		$\delta^{13}\text{C}$		$\delta^{15}\text{N}$		$\delta^{34}\text{S}$	
		Mean $\pm$ SD	Min/max	Mean $\pm$ SD	Min/max	Mean $\pm$ SD	Min/max	Mean $\pm$ SD	Min/max
EHG ( <i>Larus argentatus</i> )	44	2.29 $\pm$ 1.06	0.89/5.01	-19.4 $\pm$ 1.93	-22.9/-15.5	12.7 $\pm$ 1.82	9.76/16.0	13.1 $\pm$ 2.23	8.72/17.0
♀	23	2.05 $\pm$ 0.96	0.90/4.31						
♂	21	2.55 $\pm$ 1.12	0.89/5.01						
LBBG ( <i>Larus fuscus</i> )	54	3.08 $\pm$ 1.31	0.95/6.42	-19.1 $\pm$ 1.34	-22.6/-17.6	13.8 $\pm$ 1.30	10.9/15.8	15.9 $\pm$ 2.37	9.90/18.6
♀	27	2.82 $\pm$ 1.03	0.98/4.78						
♂	27	3.35 $\pm$ 1.52	0.95/6.42						
GBBG ( <i>Larus marinus</i> )	37	12.5 $\pm$ 3.93	6.97/21.5	-16.8 $\pm$ 0.83	-19.7/-14.7	16.4 $\pm$ 0.41	15.8/17.8	16.9 $\pm$ 1.07	14.6/18.7
♀	19	10.3 $\pm$ 2.20	6.97/13.8						
♂	18	14.9 $\pm$ 4.00	7.26/21.5						
YLG ( <i>Larus michahellis</i> )	5	6.00 $\pm$ 2.72	2.25/9.63	-19.4 $\pm$ 3.51	-25.2/-16.7	15.1 $\pm$ 1.32	12.76/15.91	12.6 $\pm$ 4.66	5.87/16.7
♀	1	2.25 $\pm$ NA	2.25/2.25						
♂	4	6.94 $\pm$ 2.00	5.26/9.63						

		Chicks							
	$n$	Hg		$\delta^{13}\text{C}$		$\delta^{15}\text{N}$		$\delta^{34}\text{S}$	
		Mean $\pm$ SD	Min/max	Mean $\pm$ SD	Min/max	Mean $\pm$ SD	Min/max	Mean $\pm$ SD	Min/max
EHG ( <i>Larus argentatus</i> )	30	0.68 $\pm$ 0.25	0.27/1.19	-18.3 $\pm$ 0.66	-19.9/-17.1	13.8 $\pm$ 0.75	12.1/15.0	16.8 $\pm$ 1.21	14.0/18.7
LBBG ( <i>Larus fuscus</i> )	37	0.58 $\pm$ 0.15	0.35/0.94	-18.3 $\pm$ 0.27	-18.8/-17.7	14.5 $\pm$ 0.41	13.7/15.2	18.4 $\pm$ 0.93	16.7/19.8
GBBG ( <i>Larus marinus</i> )	28	1.91 $\pm$ 0.76	0.81/3.86	-17.1 $\pm$ 0.77	-19.33/-16.7	15.6 $\pm$ 0.48	14.0/16.6	16.5 $\pm$ 1.32	12.8/18.6
YLG ( <i>Larus michahellis</i> )	11	0.90 $\pm$ 0.34	0.48/1.75	-18.0 $\pm$ 0.61	-19.37/-17.42	14.9 $\pm$ 1.07	12.4/16.1	16.5 $\pm$ 1.46	14.07/18.4

510

511 **Table 2.** Outputs of linear models examining the variables affecting Hg concentration in  
 512 four gull species from the Ile de Ré, France: European herring gulls (EHG), Lesser black-  
 513 backed gulls (LBBG), Great black-backed gulls (GBBG) and Yellow-legged gulls (YLG).  
 514 Significant *p*-values are in bold.

515

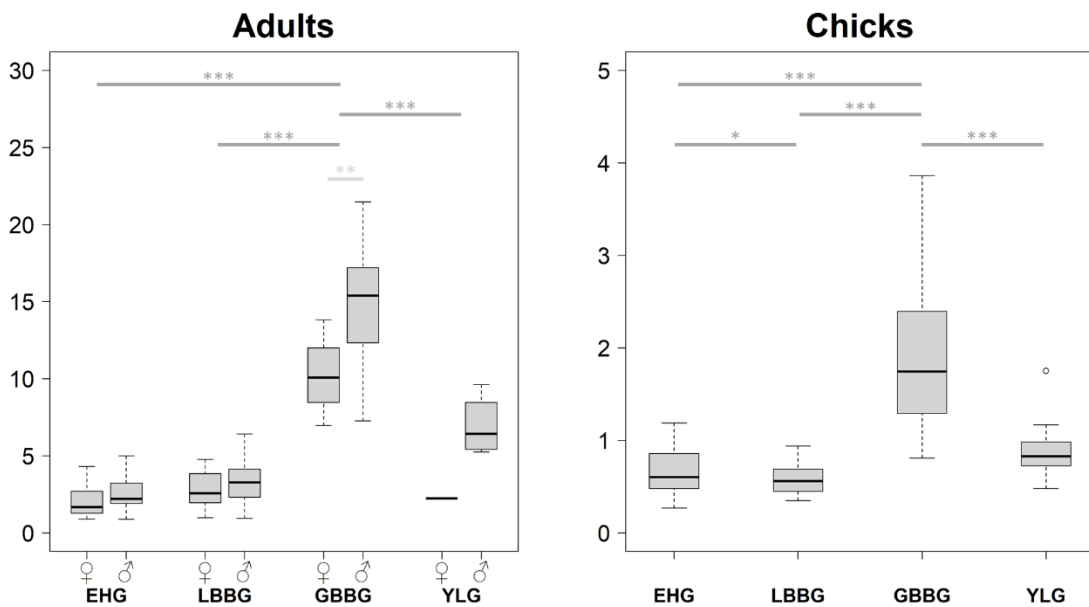
<b>Adults</b>				
<b>Parameter</b>	<b>Estimate</b>	<b>SE</b>	<b><i>t</i>-value</b>	<b><i>p</i>-value</b>
PC <sub>1</sub>	0.55	0.06	9.25	<b>&lt;0.001</b>
EHG - LBBG	0.10	0.19	0.56	0.943
EHG - GBBG	8.56	0.67	12.70	<b>&lt;0.001</b>
EHG - YLG	2.65	0.79	3.38	0.089
LBBG - GBBG	8.45	0.66	12.79	<b>&lt;0.001</b>
LBBG - YLG	2.55	0.79	3.22	0.099
GBBG - YLG	-5.90	1.02	-5.78	<b>&lt;0.001</b>

516

<b>Chicks</b>				
<b>Parameter</b>	<b>Estimate</b>	<b>SE</b>	<b><i>t</i>-value</b>	<b><i>p</i>-value</b>
PC <sub>1</sub>	0.09	0.03	3.49	<b>&lt;0.001</b>
EHG - LBBG	-0.13	0.05	-2.72	<b>0.043</b>
EHG - GBBG	1.01	0.16	6.33	<b>&lt;0.001</b>
EHG - YLG	0.11	0.12	0.93	0.792
LBBG - GBBG	1.14	0.15	7.45	<b>&lt;0.001</b>
LBBG - YLG	0.24	0.11	2.16	0.189
GBBG - YLG	-0.90	0.18	-5.05	<b>&lt;0.001</b>

517

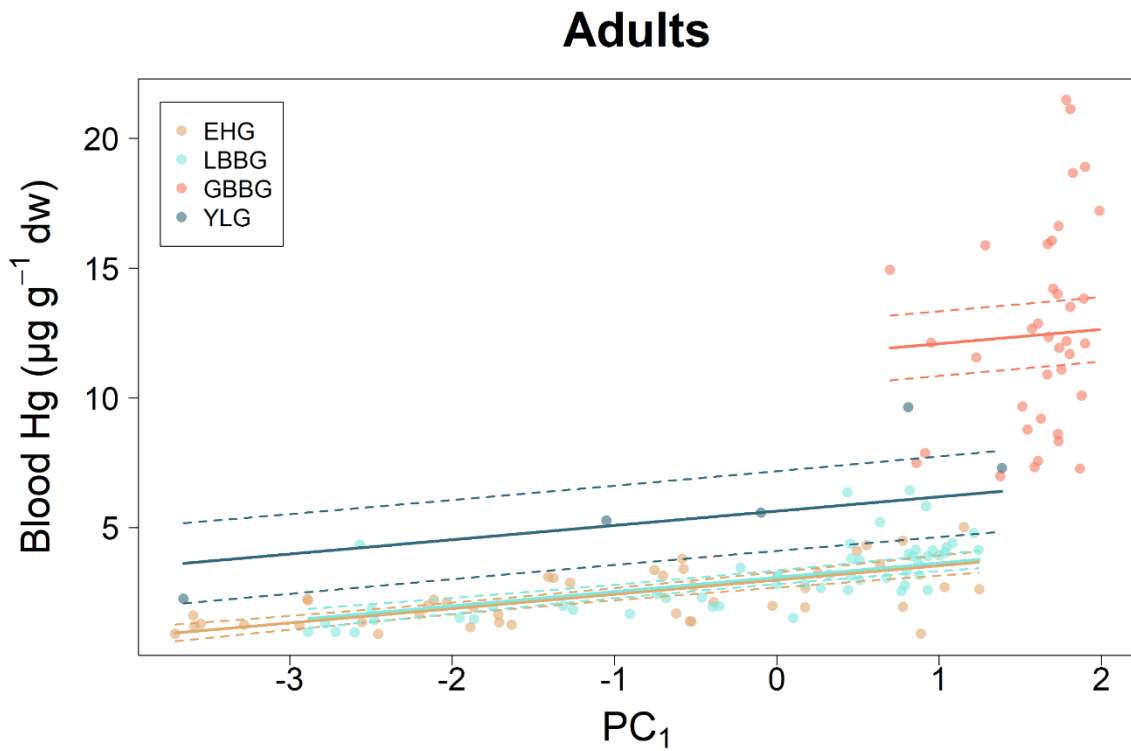
518 **Figure 2.** Blood concentrations of Hg in adults and chicks of four gull species from the  
 519 Ile de Ré, France; European herring gulls (EHG), Lesser black-backed gulls (LBBG),  
 520 Great black-backed gulls (GBBG) and Yellow-legged gulls (YLG). For adults (left), Hg  
 521 values are shown separately for females (♀) and males (♂). Interspecific (dark-grey) and  
 522 between sex (light grey) statistically significant differences are indicated by the asterisk:  
 523 \*, \*\*, \*\*\*; indicating a *p*-value < 0.05, <0.01, and <0.001, respectively. Values are  
 524 median, 25<sup>th</sup> and 75<sup>th</sup> percentiles and range.  
 525



526 **Figure 3.** Relationship between blood Hg concentrations and PC<sub>1</sub> ( $\delta^{13}\text{C}$ ,  $\delta^{15}\text{N}$  and  $\delta^{34}\text{S}$   
527 values in adults and  $\delta^{13}\text{C}$ ,  $\delta^{15}\text{N}$  in chicks) or PC<sub>2</sub> ( $\delta^{34}\text{S}$  values in chicks) of four gull species  
528 from Ile de Ré, France: European herring gulls (EHG), Lesser black-backed gulls (LBBG),  
529 Great black-backed gulls (GBBG) and Yellow-legged gulls (YLG). For each species, the  
530 solid line refers to the fitted models obtained and dotted lines represent 95 % confident  
531 intervals.

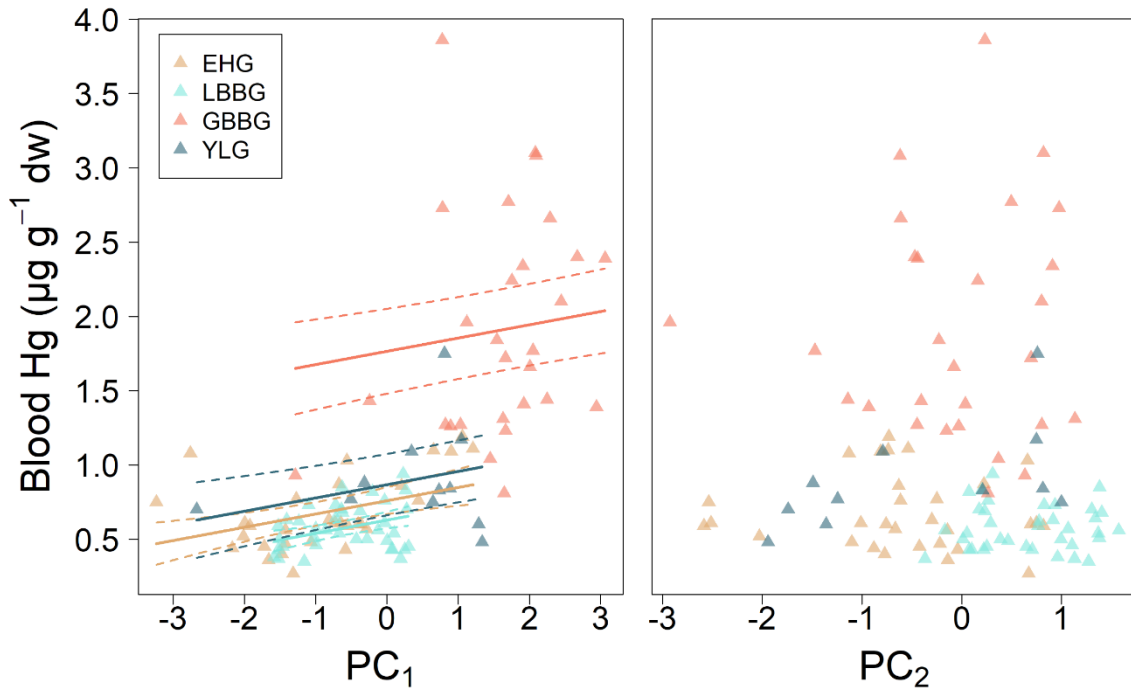
532

533



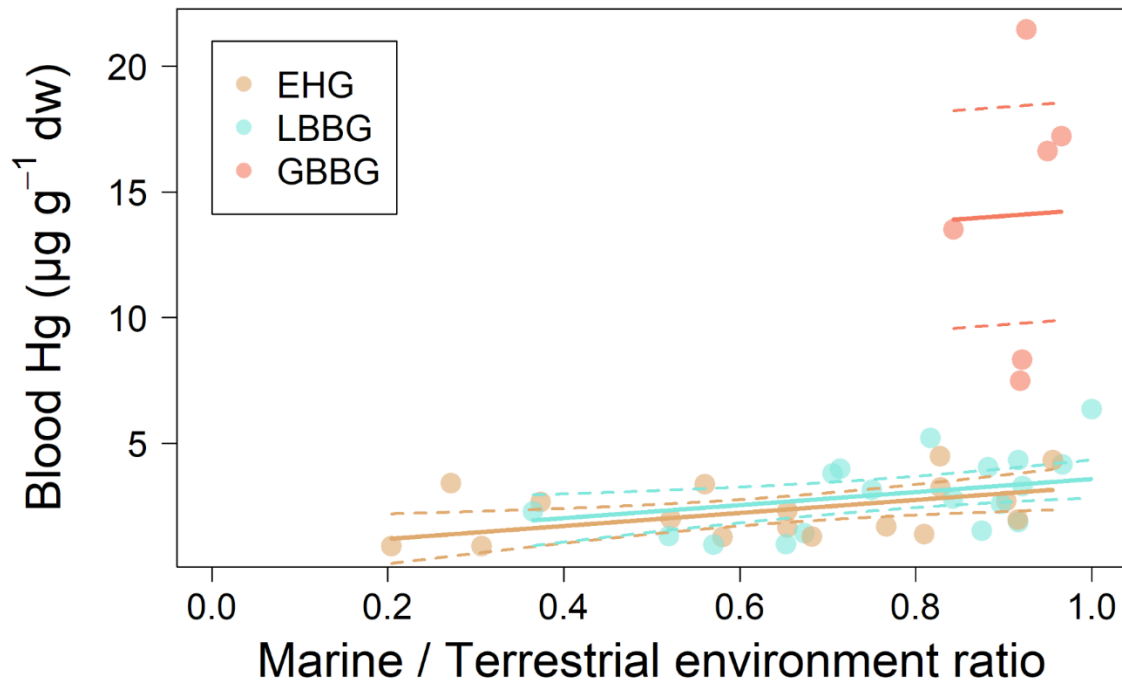
534

# Chicks



535

536 **Figure 4.** Relationship between blood Hg concentrations and the proportion of foraging  
537 trips in marine (1: exclusively marine) vs terrestrial (0: exclusively terrestrial) habitats  
538 obtain by GPS tracking in adults of three gull species from Ile de Ré, France; European  
539 herring gulls (EHG), Lesser black-backed gulls (LBBG) and Great black-backed gulls  
540 (GBBG). For each species, the solid line refers to the fitted models obtained and dotted  
541 lines represent 95 % confident intervals.  
542



543



544 **REFERENCES**

- 545 (2020), R.C.T., 2020. R: A language and environment for statistical computing. R  
546 Foundation for Statistical Computing, Vienna, Austria.
- 547 Ackerman, J.T., Eagles-Smith, C.A., Herzog, M.P., 2011. Bird mercury concentrations  
548 change rapidly as chicks age: toxicological risk is highest at hatching and fledging. *Environ*  
549 *Sci Technol* 45, 5418-5425.
- 550 Ackerman, J.T., Eagles-Smith, C.A., Herzog, M.P., Hartman, C.A., Peterson, S.H., Evers,  
551 D.C., Jackson, A.K., Elliott, J.E., Vander Pol, S.S., Bryan, C.E., 2016. Avian mercury  
552 exposure and toxicological risk across western North America: A synthesis. *Sci Total*  
553 *Environ* 568, 749-769.
- 554 Ackerman, J.T., Eagles-Smith, C.A., Takekawa, J.Y., Demers, S.A., Adelsbach, T.L.,  
555 Bluso, J.D., Miles, A.K., Warnock, N., Suchanek, T.H., Schwarzbach, S.E., 2007. Mercury  
556 concentrations and space use of pre-breeding American avocets and black-necked stilts in  
557 San Francisco Bay. *Science of The Total Environment* 384, 452-466.
- 558 Agency, E.E., 2016. CORINE Land Cover - Occupation des sols en France.
- 559 Anderson, O., Phillips, R., McDonald, R., Shore, R., McGill, R., Bearhop, S., 2009.  
560 Influence of trophic position and foraging range on mercury levels within a seabird  
561 community. *Marine Ecology Progress Series* 375, 277-288.
- 562 Annett, C., Pierotti, R., 1989. Chick hatching as a trigger for dietary switching in the  
563 Western Gull. *Colonial Waterbirds*, 4-11.
- 564 Atwell, L., Hobson, K.A., Welch, H.E., 1998. Biomagnification and bioaccumulation of  
565 mercury in an arctic marine food web: insights from stable nitrogen isotope analysis.  
566 *Canadian Journal of Fisheries and Aquatic Sciences* 55, 1114-1121.
- 567 Barquete, V., Strauss, V., Ryan, P.G., 2013. Stable isotope turnover in blood and claws: A  
568 case study in captive African Penguins. *Journal of Experimental Marine Biology and*  
569 *Ecology* 448, 121-127.
- 570 Bearhop, S., Phillips, R., Thompson, D., Waldron, S., Furness, R., 2000. Variability in  
571 mercury concentrations of great skuas *Catharacta skua*: the influence of colony, diet and  
572 trophic status inferred from stable isotope signatures. *Marine Ecology Progress Series* 195,  
573 261-268.
- 574 Bełdowska, M., Falkowska, L., 2016. Mercury in marine fish, mammals, seabirds, and  
575 human hair in the coastal zone of the southern Baltic. *Water, Air, & Soil Pollution* 227, 52.
- 576 Binkowski, L.J., Fort, J., Brault-Favrou, M., Gallien, F., Le Guillou, G., Chastel, O.,  
577 Bustamante, P., 2020. Foraging ecology drives mercury contamination in chick gulls from  
578 the English Channel. *Chemosphere*, 128622.
- 579 Blévin, P., Carravieri, A., Jaeger, A., Chastel, O., Bustamante, P., Cherel, Y., 2013. Wide  
580 range of mercury contamination in chicks of southern ocean seabirds. *PLoS One* 8, e54508.
- 581 Bolnick, D.I., Svanback, R., Fordyce, J.A., Yang, L.H., Davis, J.M., Hulsey, C.D., Forister,  
582 M.L., 2003. The ecology of individuals: incidence and implications of individual  
583 specialization. *Am Nat* 161, 1-28.
- 584 Bracey, A.M., Etterson, M.A., Strand, F.C., Matteson, S.W., Niemi, G.J., Cuthbert, F.J.,  
585 Hoffman, J.C., 2021. Foraging Ecology Differentiates Life Stages and Mercury Exposure  
586 in Common Terns (*Sterna hirundo*). *Integrated Environmental Assessment and*  
587 *Management* 17, 398-410.
- 588 Buckley, N.J., 1990. Diet and feeding ecology of great black-backed gulls (*Larus marinus*)

589 at a southern Irish breeding colony. *Journal of Zoology* 222, 363-373.

590 Bukacińska, M., Bukaciński, D., Spaans, A.L., 1996. Attendance and diet in relation to  
591 breeding success in Herring Gulls (*Larus argentatus*). *The Auk* 113, 300-309.

592 Burger, A.E., Shaffer, S.A., 2008. Perspectives in Ornithology Application of Tracking and  
593 Data-Logging Technology in Research and Conservation of Seabirds. *The Auk* 125, 253-  
594 264.

595 Burger, J., Gochfeld, M., 2004. Marine birds as sentinels of environmental pollution.  
596 *EcoHealth* 1, 263-274.

597 Burgess, N.M., Evers, D.C., Kaplan, J.D., 2005. Mercury and other contaminants in  
598 common loons breeding in Atlantic Canada. *Ecotoxicology* 14, 241-252.

599 Bustamante, P., Carravieri, A., Goutte, A., Barbraud, C., Delord, K., Chastel, O.,  
600 Weimerskirch, H., Cherel, Y., 2016. High feather mercury concentrations in the wandering  
601 albatross are related to sex, breeding status and trophic ecology with no demographic  
602 consequences. *Environ Res* 144, 1-10.

603 Bustamante, P., Lahaye, V., Durnez, C., Churlaud, C., Caurant, F., 2006. Total and organic  
604 Hg concentrations in cephalopods from the North Eastern Atlantic waters: influence of  
605 geographical origin and feeding ecology. *Sci Total Environ* 368, 585-596.

606 Cadiou, B., 2011. Cinquième recensement national des oiseaux marins nicheurs en France  
607 Métropolitaine 2009-2011 - 1ère synthèse : bilan intermédiaire 2009-2010, p. 62.

608 Caron-Beaudoin, É., Gentes, M.L., Patenaude-Monette, M., Hélie, J.F., Giroux, J.F.,  
609 Verreault, J., 2013. Combined usage of stable isotopes and GPS-based telemetry to  
610 understand the feeding ecology of an omnivorous bird, the Ring-billed Gull (*Larus*  
611 *delawarensis*). *Canadian journal of zoology* 91, 689-697.

612 Carravieri, A., 2014. Seabirds as bioindicators of Southern Ocean ecosystems:  
613 concentrations of inorganic and organic contaminants, ecological explanation and critical  
614 evaluation, *Environmental and Population Biology, Ecology*. La Rochelle University, p.  
615 238.

616 Carravieri, A., Bustamante, P., Tartu, S., Meillere, A., Labadie, P., Budzinski, H., Peluhet,  
617 L., Barbraud, C., Weimerskirch, H., Chastel, O., Cherel, Y., 2014a. Wandering albatrosses  
618 document latitudinal variations in the transfer of persistent organic pollutants and mercury  
619 to Southern Ocean predators. *Environ Sci Technol* 48, 14746-14755.

620 Carravieri, A., Cherel, Y., Blevin, P., Brault-Favrou, M., Chastel, O., Bustamante, P.,  
621 2014b. Mercury exposure in a large subantarctic avian community. *Environ Pollut* 190, 51-  
622 57.

623 Carravieri, A., Cherel, Y., Jaeger, A., Churlaud, C., Bustamante, P., 2016. Penguins as  
624 bioindicators of mercury contamination in the southern Indian Ocean: geographical and  
625 temporal trends. *Environmental Pollution* 213, 195-205.

626 Ceia, F.R., Cherel, Y., Paiva, V.H., Ramos, J.A., 2018. Stable Isotope Dynamics ( $\delta^{13}\text{C}$  and  
627  $\delta^{15}\text{N}$ ) in Neritic and Oceanic Waters of the North Atlantic Inferred From GPS-Tracked  
628 Cory's Shearwaters. *Frontiers in Marine Science* 5.

629 Ceia, F.R., Ramos, J.A., 2015. Individual specialization in the foraging and feeding  
630 strategies of seabirds: a review. *Marine biology* 162, 1923-1938.

631 Chen, C., Amirbahman, A., Fisher, N., Harding, G., Lamborg, C., Nacci, D., Taylor, D.,  
632 2008. Methylmercury in Marine Ecosystems: Spatial Patterns and Processes of Production,  
633 Bioaccumulation, and Biomagnification. *EcoHealth* 5, 399-408.

634 Cherel, Y., Barbraud, C., Lahournat, M., Jaeger, A., Jaquemet, S., Wanless, R.M., Phillips,

635 R.A., Thompson, D.R., Bustamante, P., 2018. Accumulate or eliminate? Seasonal mercury  
636 dynamics in albatrosses, the most contaminated family of birds. *Environ Pollut* 241, 124-  
637 135.

638 Cherel, Y., Xavier, J.C., de Grissac, S., Trouvé, C., Weimerskirch, H., 2017. Feeding  
639 ecology, isotopic niche, and ingestion of fishery-related items of the wandering albatross  
640 *Diomedea exulans* at Kerguelen and Crozet Islands. *Marine Ecology Progress Series* 565,  
641 197-215.

642 Chisholm, B.S., Nelson, D.E., Schwarcz, H.P., 1982. Stable-carbon isotope ratios as a  
643 measure of marine versus terrestrial protein in ancient diets. *Science* 216, 1131-1132.

644 Clatterbuck, C.A., Lewison, R.L., Orben, R.A., Ackerman, J.T., Torres, L.G., Suryan,  
645 R.M., Warzybok, P., Jahncke, J., Shaffer, S.A., 2021. Foraging in marine habitats increases  
646 mercury concentrations in a generalist seabird. *Chemosphere* 279, 130470.

647 Cossa, D., Laurier, F.J.G., Ficht, A., 2002. Mercury Contamination in the Seine Estuary,  
648 France: An Overview, *Biogeochemistry of Environmentally Important Trace Elements*.  
649 American Chemical Society, pp. 298-320.

650 Dietz, R., Riget, F., Born, E., 2000. An assessment of selenium to mercury in Greenland  
651 marine animals. *Science of The Total Environment* 245, 15-24.

652 Díez, S., 2008. Human health effects of methylmercury exposure. *Reviews of*  
653 *environmental contamination and toxicology*, 111-132.

654 Eagles-Smith, C.A., Silbergeld, E.K., Basu, N., Bustamante, P., Diaz-Barriga, F., Hopkins,  
655 W.A., Kidd, K.A., Nyland, J.F., 2018. Modulators of mercury risk to wildlife and humans  
656 in the context of rapid global change. *Ambio* 47, 170-197.

657 Einoder, L.D., MacLeod, C.K., Coughanowr, C., 2018. Metal and Isotope Analysis of Bird  
658 Feathers in a Contaminated Estuary Reveals Bioaccumulation, Biomagnification, and  
659 Potential Toxic Effects. *Arch Environ Contam Toxicol* 75, 96-110.

660 Elliott, K.H., Braune, B.M., Elliott, J.E., 2021. Beyond bulk delta(15)N: Combining a suite  
661 of stable isotopic measures improves the resolution of the food webs mediating  
662 contaminant signals across space, time and communities. *Environ Int* 148, 106370.

663 Evers, D.C., Burgess, N.M., Champoux, L., Hoskins, B., Major, A., Goodale, W.M., Taylor,  
664 R.J., Poppenga, R., Daigle, T., 2005. Patterns and interpretation of mercury exposure in  
665 freshwater avian communities in northeastern North America. *Ecotoxicology* 14, 193-221.

666 Feranec, J., Soukup, T., Hazeu, G., Jaffrain, G., 2016. European landscape dynamics:  
667 CORINE land cover data. CRC Press.

668 Franke, A., Caelli, T., Hudson, R.J., 2004. Analysis of movements and behavior of caribou  
669 (*Rangifer tarandus*) using hidden Markov models. *Ecological Modelling* 173, 259-270.

670 Fridolfsson, A.-K., Ellegren, H., 1999. A Simple and Universal Method for Molecular  
671 Sexing of Non-Ratite Birds. *Journal of Avian Biology* 30, 116-121.

672 Furness, R.W., Camphuysen, K., 1997. Seabirds as monitors of the marine environment.  
673 *iceS Journal of marine Science* 54, 726-737.

674 Gongora, E., Braune, B.M., Elliott, K.H., 2018. Nitrogen and sulfur isotopes predict  
675 variation in mercury levels in Arctic seabird prey. *Mar Pollut Bull* 135, 907-914.

676 Goutte, A., Barbraud, C., Herzke, D., Bustamante, P., Angelier, F., Tartu, S., Clément-  
677 Chastel, C., Moe, B., Bech, C., Gabrielsen, G.W., 2015. Survival rate and breeding outputs  
678 in a high Arctic seabird exposed to legacy persistent organic pollutants and mercury.  
679 *Environmental Pollution* 200, 1-9.

680 Goutte, A., Barbraud, C., Meillere, A., Carravieri, A., Bustamante, P., Labadie, P.,

681 Budzinski, H., Delord, K., Cherel, Y., Weimerskirch, H., Chastel, O., 2014a. Demographic  
682 consequences of heavy metals and persistent organic pollutants in a vulnerable long-lived  
683 bird, the wandering albatross. *Proc Biol Sci* 281.

684 Goutte, A., Bustamante, P., Barbraud, C., Delord, K., Weimerskirch, H., Chastel, O., 2014b.  
685 Demographic responses to mercury exposure in two closely related Antarctic top predators.  
686 *Ecology* 95, 1075-1086.

687 Harris, S.M., Descamps, S., Sneddon, L.U., Bertrand, P., Chastel, O., Patrick, S.C., 2020.  
688 Personality predicts foraging site fidelity and trip repeatability in a marine predator. *J Anim*  
689 *Ecol* 89, 68-79.

690 Hobson, K.A., 1987. Use of stable-carbon isotope analysis to estimate marine and  
691 terrestrial protein content in gull diets. *Canadian journal of zoology* 65, 1210-1213.

692 Hobson, K.A., 1999. Tracing origins and migration of wildlife using stable isotopes: a  
693 review. *Oecologia* 120, 314-326.

694 Hobson, K.A., Clark, R.G., 1992. Assessing avian diets using stable isotopes I: turnover of  
695  $^{13}\text{C}$  in tissues. *The Condor* 94, 181-188.

696 Hobson, K.A., Clark, R.G., 1993. Turnover of  $^{13}\text{C}$  in Cellular and Plasma  
697 Fractions of Blood: Implications for Nondestructive Sampling in Avian Dietary Studies.  
698 *The Auk* 110, 638-641.

699 Hobson, K.A., Piatt, J.F., Pitocchelli, J., 1994. Using stable isotopes to determine seabird  
700 trophic relationships. *Journal of animal ecology*, 786-798.

701 Jaeger, A., Blanchard, P., Richard, P., Cherel, Y., 2009. Using carbon and nitrogen isotopic  
702 values of body feathers to infer inter-and intra-individual variations of seabird feeding  
703 ecology during moult. *Marine biology* 156, 1233-1240.

704 Kelly, J.F., 2000. Stable isotopes of carbon and nitrogen in the study of avian and  
705 mammalian trophic ecology. *Canadian journal of zoology* 78, 1-27.

706 Kojadinovic, J., Bustamante, P., Churlaud, C., Cosson, R.P., Le Corre, M., 2007a. Mercury  
707 in seabird feathers: Insight on dietary habits and evidence for exposure levels in the western  
708 Indian Ocean. *Science of The Total Environment* 384, 194-204.

709 Kojadinovic, J., Bustamante, P., Le Corre, M., Cosson, R.P., 2007b. Trace Elements in  
710 Three Marine Birds Breeding on Reunion Island (Western Indian Ocean): Part 2—Factors  
711 Influencing Their Detoxification. *Archives of Environmental Contamination and*  
712 *Toxicology* 52, 431-440.

713 Kojadinovic, J., Corre, M.L., Cosson, R.P., Bustamante, P., 2007c. Trace Elements in Three  
714 Marine Birds Breeding on Reunion Island (Western Indian Ocean): Part 1—Factors  
715 Influencing Their Bioaccumulation. *Archives of Environmental Contamination and*  
716 *Toxicology* 52, 418-430.

717 La Sala, L.F., Petracci, P.F., Smits, J.E., Botté, S., Furness, R.W., 2011. Mercury levels and  
718 health parameters in the threatened Olrog's Gull (*Larus atlanticus*) from Argentina.  
719 *Environmental monitoring and assessment* 181, 1-11.

720 Langrock, R., King, R., Matthiopoulos, J., Thomas, L., Fortin, D., Morales, J.M., 2012.  
721 Flexible and practical modeling of animal telemetry data: hidden Markov models and  
722 extensions. *Ecology* 93, 2336-2342.

723 Lê, S., Josse, J., Husson, F., 2008. FactoMineR: an R package for multivariate analysis.  
724 *Journal of statistical software* 25.

725 Lenth, R.V., Buerkner, P., Herve, M., Love, J., Miguez, F., H., R., Singmann, H., 2021.  
726 Package 'emmeans', 1.7.1-1 ed.

727 Lewis, S., Becker, P., Furness, R., 1993. Mercury levels in eggs, tissues, and feathers of  
728 herring gulls *Larus argentatus* from the German Wadden Sea Coast. *Environmental*  
729 *Pollution* 80, 293-299.

730 Lott, C.A., Meehan, T.D., Heath, J.A., 2003. Estimating the latitudinal origins of migratory  
731 birds using hydrogen and sulfur stable isotopes in feathers: influence of marine prey base.  
732 *Oecologia* 134, 505-510.

733 MacAvoy, S., Macko, S., McIninch, S., Garman, G., 2000. Marine nutrient contributions  
734 to freshwater apex predators. *Oecologia* 122, 568-573.

735 Manceau, A., Bourdineaud, J.P., Oliveira, R.B., Sarrazin, S.L.F., Krabbenhoft, D.P.,  
736 Eagles-Smith, C.A., Ackerman, J.T., Stewart, A.R., Ward-Deitrich, C., Del Castillo Busto,  
737 M.E., Goenaga-Infante, H., Wack, A., Retegan, M., Detlefs, B., Glatzel, P., Bustamante, P.,  
738 Nagy, K.L., Poulin, B.A., 2021. Demethylation of Methylmercury in Bird, Fish, and  
739 Earthworm. *Environ Sci Technol*.

740 Mazerolle, M.J., 2017. Package ‘AICcmodavg’, R package, 2.3-1 ed.

741 McCutchan Jr, J.H., Lewis Jr, W.M., Kendall, C., McGrath, C.C., 2003. Variation in trophic  
742 shift for stable isotope ratios of carbon, nitrogen, and sulfur. *Oikos* 102, 378-390.

743 Mendes, R.F., Ramos, J.A., Paiva, V.H., Calado, J.G., Matos, D.M., Ceia, F.R., 2018.  
744 Foraging strategies of a generalist seabird species, the yellow-legged gull, from GPS  
745 tracking and stable isotope analyses. *Marine biology* 165.

746 Michelot, T., Langrock, R., Patterson, T.A., 2016. moveHMM: an R package for the  
747 statistical modelling of animal movement data using hidden Markov models. *Methods in*  
748 *Ecology and Evolution* 7, 1308-1315.

749 Mills, W.F., Ibanez, A.E., Bustamante, P., Carneiro, A.P.B., Bearhop, S., Cherel, Y.,  
750 Mariano-Jelicich, R., McGill, R.A.R., Montalti, D., Votier, S.C., Phillips, R.A., 2022.  
751 Spatial and sex differences in mercury contamination of skuas in the Southern Ocean.  
752 *Environ Pollut* 297, 118841.

753 Mitchell, C.P., Gilmour, C.C., 2008. Methylmercury production in a Chesapeake Bay salt  
754 marsh. *Journal of Geophysical Research: Biogeosciences* 113.

755 Monteiro, L., Furness, R., 1995. Seabirds as monitors of mercury in the marine  
756 environment, Mercury as a Global Pollutant. Springer, pp. 851-870.

757 Monteiro, L., Granadeiro, J., Furness, R., 1998. Relationship between mercury levels and  
758 diet in Azores seabirds. *Marine Ecology Progress Series* 166, 259-265.

759 Monteiro, L.R., Furness, R.W., 2001. Kinetics, dose– response, and excretion of  
760 methylmercury in free-living adult Cory's shearwaters. *Environmental Science &*  
761 *Technology* 35, 739-746.

762 Morel, F.M., Kraepiel, A.M., Amyot, M., 1998. The chemical cycle and bioaccumulation  
763 of mercury. *Annual review of ecology and systematics* 29, 543-566.

764 Mudge, G., Ferns, P., 1982. The feeding ecology of five species of gulls (Ayes: Larini) in  
765 the inner Bristol Channel. *Journal of Zoology* 197, 497-510.

766 Nehlich, O., 2015. The application of sulphur isotope analyses in archaeological research:  
767 a review. *Earth-Science Reviews* 142, 1-17.

768 Newsome, S.D., Martinez del Rio, C., Bearhop, S., Phillips, D.L., 2007. A niche for  
769 isotopic ecology. *Frontiers in Ecology and the Environment* 5, 429-436.

770 Peterson, S.H., Ackerman, J.T., Eagles-Smith, C.A., 2017. Mercury contamination and  
771 stable isotopes reveal variability in foraging ecology of generalist California gulls.  
772 *Ecological Indicators* 74, 205-215.

773 Phillips, R.A., Lewis, S., González-Solís, J., Daunt, F., 2017. Causes and consequences of  
774 individual variability and specialization in foraging and migration strategies of seabirds.  
775 *Marine Ecology Progress Series* 578, 117-150.

776 Pierotti, R., Annett, C., 1987. Reproductive consequences of dietary specialization and  
777 switching in an ecological generalist, *Foraging behavior*. Springer, pp. 417-442.

778 Pinheiro, J., Bates, D., DebRoy, S., Sarkar, D., Heisterkamp, S., Van Willigen, B.,  
779 Maintainer, R., 2017. Package ‘nlme’, Linear and nonlinear mixed effects models, version,  
780 3.1-151 ed.

781 Pirrone, N., Cinnirella, S., Feng, X., Finkelman, R.B., Friedli, H.R., Leaner, J., Mason, R.,  
782 Mukherjee, A.B., Stracher, G.B., Streets, D.G., Telmer, K., 2010. Global mercury  
783 emissions to the atmosphere from anthropogenic and natural sources. *Atmos. Chem. Phys.*  
784 10, 5951-5964.

785 Ramos, R., Ramirez, F., Jover, L., 2013. Trophodynamics of inorganic pollutants in a wide-  
786 range feeder: The relevance of dietary inputs and biomagnification in the Yellow-legged  
787 gull (*Larus michahellis*). *Environ Pollut* 172, 235-242.

788 Ramos, R., Ramírez, F., Sanpera, C., Jover, L., Ruiz, X., 2009. Feeding ecology of yellow-  
789 legged gulls *Larus michahellis* in the western Mediterranean: a comparative assessment  
790 using conventional and isotopic methods. *Marine Ecology Progress Series* 377, 289-297.

791 Rees, C., Jenkins, W., Monster, J., 1978. The sulphur isotopic composition of ocean water  
792 sulphate. *Geochimica et Cosmochimica acta* 42, 377-381.

793 Renedo, M., Amouroux, D., Duval, B., Carravieri, A., Tessier, E., Barre, J., Bérail, S.,  
794 Pedrero, Z., Cherel, Y., Bustamante, P., 2018. Seabird Tissues As Efficient Biomonitoring  
795 Tools for Hg Isotopic Investigations: Implications of Using Blood and Feathers from  
796 Chicks and Adults. *Environ Sci Technol* 52, 4227-4234.

797 Rimmer, C.C., McFarland, K.P., Evers, D.C., Miller, E.K., Aubry, Y., Busby, D., Taylor,  
798 R.J., 2005. Mercury Concentrations in Bicknell’s Thrush and Other Insectivorous  
799 Passerines in Montane Forests of Northeastern North America. *Ecotoxicology* 14, 223-240.

800 Santos, C.S.A., Sotillo, A., Gupta, T., Delgado, S., Müller, W., Stienen, E.W.M., de Neve,  
801 L., Lens, L., Soares, A., Monteiro, M.S., Loureiro, S., 2020. Mercury (Hg) Uptake Affects  
802 the Development of *Larus fuscus* Chicks. *Environ Toxicol Chem*.

803 Schoeninger, M.J., DeNiro, M.J., 1984. Nitrogen and carbon isotopic composition of bone  
804 collagen from marine and terrestrial animals. *Geochimica et Cosmochimica acta* 48, 625-  
805 639.

806 Sebastiano, M., Bustamante, P., Costantini, D., Eulaers, I., Malarvannan, G., Mendez-  
807 Fernandez, P., Churlaud, C., Blevin, P., Hauselmann, A., Dell’Omo, G., Covaci, A., Eens,  
808 M., Chastel, O., 2016. High levels of mercury and low levels of persistent organic  
809 pollutants in a tropical seabird in French Guiana, the Magnificent frigatebird, *Fregata*  
810 *magnificens*. *Environ Pollut* 214, 384-393.

811 Sebastiano, M., Bustamante, P., Eulaers, I., Malarvannan, G., Mendez-Fernandez, P.,  
812 Churlaud, C., Blevin, P., Hauselmann, A., Covaci, A., Eens, M., Costantini, D., Chastel,  
813 O., 2017. Trophic ecology drives contaminant concentrations within a tropical seabird  
814 community. *Environ Pollut* 227, 183-193.

815 Sebastiano, M., Costantini, D., Eens, M., Pineau, K., Bustamante, P., Chastel, O., 2022.  
816 Possible interaction between exposure to environmental contaminants and nutritional stress  
817 in promoting disease occurrence in seabirds from French Guiana: a review. *Regional*  
818 *Environmental Change* 22, 63.

819 Soldatini, C., Sebastiano, M., Albores-Barajas, Y.V., Abdelgawad, H., Bustamante, P.,  
820 Costantini, D., 2020. Mercury exposure in relation to foraging ecology and its impact on  
821 the oxidative status of an endangered seabird. *Sci Total Environ* 724, 138131.  
822 Spalding, M.G., Frederick, P.C., McGill, H.C., Bouton, S.N., McDowell, L.R., 2000.  
823 Methylmercury accumulation in tissues and its effects on growth and appetite in captive  
824 great egrets. *Journal of wildlife diseases* 36, 411-422.  
825 Stewart, F., Phillips, R., Catry, P., Furness, R., 1997. Influence of species, age and diet on  
826 mercury concentrations in Shetland seabirds. *Marine Ecology Progress Series* 151, 237-  
827 244.  
828 Stickel, L., Stickel, W., McLane, M., Bruns, M., 1977. Prolonged retention of methyl  
829 mercury by mallard drakes. *Bulletin of environmental contamination and toxicology* 18,  
830 393-400.  
831 Szumiło-Pilarska, E., Falkowska, L., Grajewska, A., Meissner, W., 2017. Mercury in  
832 Feathers and Blood of Gulls from the Southern Baltic Coast, Poland. *Water Air Soil Pollut*  
833 228, 138.  
834 Tan, S.W., Meiller, J.C., Mahaffey, K.R., 2009. The endocrine effects of mercury in humans  
835 and wildlife. *Critical reviews in toxicology* 39, 228-269.  
836 Tartu, S., Angelier, F., Wingfield, J.C., Bustamante, P., Labadie, P., Budzinski, H.,  
837 Weimerskirch, H., Bustnes, J.O., Chastel, O., 2015a. Corticosterone, prolactin and egg  
838 neglect behavior in relation to mercury and legacy POPs in a long-lived Antarctic bird. *Sci*  
839 *Total Environ* 505, 180-188.  
840 Tartu, S., Bustamante, P., Angelier, F., Lendvai, Á.Z., Moe, B., Blévin, P., Bech, C.,  
841 Gabrielsen, G.W., Bustnes, J.O., Chastel, O., Hørak, P., 2015b. Mercury exposure, stress  
842 and prolactin secretion in an Arctic seabird: an experimental study. *Functional Ecology* 30,  
843 596-604.  
844 Tartu, S., Bustamante, P., Goutte, A., Cherel, Y., Weimerskirch, H., Bustnes, J.O., Chastel,  
845 O., 2014. Age-related mercury contamination and relationship with luteinizing hormone in  
846 a long-lived Antarctic bird. *PLoS One* 9, e103642.  
847 Tartu, S., Goutte, A., Bustamante, P., Angelier, F., Moe, B., Clement-Chastel, C., Bech, C.,  
848 Gabrielsen, G.W., Bustnes, J.O., Chastel, O., 2013. To breed or not to breed: endocrine  
849 response to mercury contamination by an Arctic seabird. *Biol Lett* 9, 20130317.  
850 Thompson, D., Furness, R., 1989. Comparison of the levels of total and organic mercury  
851 in seabird feathers. *Marine Pollution Bulletin* 20, 577-579.  
852 Thorne, L.H., Fuirst, M., Veit, R., Baumann, Z., 2021. Mercury concentrations provide an  
853 indicator of marine foraging in coastal birds. *Ecological Indicators* 121.  
854 Whitney, M.C., Cristol, D.A., 2017. Impacts of sublethal mercury exposure on birds: a  
855 detailed review. *Reviews of Environmental Contamination and Toxicology* Volume 244,  
856 113-163.  
857 Zorrozuza, N., Mathilde, M., Asier, A., Castege, I., Diaz, B., Egunez, A., Galarza, A.,  
858 Hidalgo, J., Milon, E., Sanpera, C., Arizaga, J., 2020. Relating trophic ecology and Hg  
859 species contamination in a resident opportunistic seabird of the Bay of Biscay. *Environ Res*  
860 186, 109526.  
861 Zuur, A., Ieno, E.N., Smith, G.M., 2007. *Analyzing ecological data*. Springer.  
862