



**HAL**  
open science

## Differential prognostic burden of cardiovascular disease and lower-limb amputation on the risk of all-cause death in people with long-standing type 1 diabetes

Marion Camoin, Gilberto Velho, Pierre-Jean Saulnier, Louis Potier, Yawa Abouleka, Charlyne Carpentier, Severine Dubois, Alice Larroumet, Vincent Rigalleau, Elise Gand, et al.

### ► To cite this version:

Marion Camoin, Gilberto Velho, Pierre-Jean Saulnier, Louis Potier, Yawa Abouleka, et al.. Differential prognostic burden of cardiovascular disease and lower-limb amputation on the risk of all-cause death in people with long-standing type 1 diabetes. *Cardiovascular Diabetology*, 2022, 21 (1), pp.71. 10.1186/s12933-022-01487-8 . hal-03698020

**HAL Id: hal-03698020**

**<https://hal.science/hal-03698020>**

Submitted on 17 Jun 2022

**HAL** is a multi-disciplinary open access archive for the deposit and dissemination of scientific research documents, whether they are published or not. The documents may come from teaching and research institutions in France or abroad, or from public or private research centers.

L'archive ouverte pluridisciplinaire **HAL**, est destinée au dépôt et à la diffusion de documents scientifiques de niveau recherche, publiés ou non, émanant des établissements d'enseignement et de recherche français ou étrangers, des laboratoires publics ou privés.



Distributed under a Creative Commons Attribution 4.0 International License

RESEARCH

Open Access



# Differential prognostic burden of cardiovascular disease and lower-limb amputation on the risk of all-cause death in people with long-standing type 1 diabetes

Marion Camoin<sup>1,2</sup>, Gilberto Velho<sup>3</sup>, Pierre-Jean Saulnier<sup>4,5,6</sup>, Louis Potier<sup>2,3</sup>, Yawa Abouleka<sup>2</sup>, Charlyne Carpentier<sup>7</sup>, Severine Dubois<sup>7</sup>, Alice Larroumet<sup>1</sup>, Vincent Rigalleau<sup>1,8,9</sup>, Elise Gand<sup>5</sup>, Olivier Bourron<sup>10,11</sup>, Lyse Bordier<sup>12</sup>, André Scheen<sup>13</sup>, Samy Hadjadj<sup>14</sup>, Ronan Roussel<sup>2,3^</sup>, Michel Marre<sup>3,15</sup> and Kamel Mohammedi<sup>1,8,16\*</sup>

## Abstract

**Background:** Cardiovascular disease (CVD) and nontraumatic lower-limb amputation (LLA) each results in reduced life expectancy in patients with type 1 diabetes, but the differential burden between these conditions is unknown. We compared the effects of CVD and LLA on the risk of mortality in people with type 1 diabetes.

**Methods:** We used pooled data from the SURGENE, GENEDIAB, and GENESIS prospective cohorts. Data were divided into: 1/absence of CVD (myocardial infarction and/or stroke) nor LLA, 2/history of CVD alone without LLA, 3/LLA alone without CVD or 4/both conditions at baseline. Participants with baseline history of peripheral artery disease were excluded from groups 1 and 2. The study endpoint was any death occurring during follow-up, regardless of the causes.

**Results:** Among 1169 participants (male 55%, age  $40 \pm 13$  years, diabetes duration  $23 \pm 11$  years), CVD, LLA or both were present at baseline in 49 (4.2%), 62 (5.3%) and 20 (1.7%) subjects, respectively. All-cause death occurred in 304 (26%) participants during 17-year follow-up, corresponding to 18,426 person-years and an incidence rate of 16 (95%CI, 15–18) per 1000 person-years. The risk of death increased in individuals with baseline history of CVD (adjusted HR 2.00 [95% CI 1.34–3.01],  $p = 0.0008$ ) or LLA (2.26 [1.56–3.28],  $p < 0.0001$ ), *versus* no condition, with an additive effect in people with both conditions (5.32 [3.14–9.00],  $p < 0.0001$ ). No incremental risk of death was observed in people with CVD *versus* LLA (0.87 [0.54–1.41]). Compared with no condition, CVD and LLA were similarly associated with reduced life expectancy during follow-up: 2.79 (95% CI 1.26–4.32) and 3.38 (1.87–4.88) years, respectively. Combined conditions expose to 7.04 (4.76–9.31) less years of life expectancy (all  $p < 0.0001$ ).

<sup>^</sup>Ronan Roussel—deceased on 01/30/2022

\*Correspondence: km.mmohammedi@gmail.com

<sup>1</sup> Department of Endocrinology, Diabetes and Nutrition, CEDEX, Bordeaux University Hospital, Hôpital Haut-Lévêque, Avenue de Magellan, 33604 Pessac, France

Full list of author information is available at the end of the article



**Conclusions:** CVD and LLA conferred a similar burden regarding mortality in type 1 diabetes population. Our findings encourage a careful consideration of people with type 1 diabetes and LLA as usually recommended for those with CVD, in terms of management of risk factors, treatments and prevention.

**Keywords:** Lower-limb amputation, Cardiovascular disease, Mortality, Myocardial infarction, Stroke, Type 1 diabetes mellitus

## Background

Type 1 diabetes is still associated with increased risk of premature mortality as compared to matched individuals from the general population, despite success in reducing risk of diabetes complications over the last decades [1–3]. Cardiovascular disease (CVD) is at least 3-times more prevalent in people with type 1 diabetes, compared with individuals without diabetes [4]. It is well established that CVD accounts for most of the premature deaths occurring in patients with type 1 diabetes [5, 6].

Nontraumatic lower-limb amputations (LLA) is a common complication, with a much higher prevalence in people with type 1 diabetes than in persons without diabetes [7]. It is a devastating complication, associated with major disability, worsening quality of life and considerable impact on health care systems [8–10]. LLA is also associated with a significant reduction in life expectancy, which is usually attributable to coexisting CVD [11, 12]. Beyond increasing the risk of cardiovascular events, LLA is a sentinel outcome, because risk is affected by many conditions, especially peripheral artery disease (PAD), peripheral diabetic neuropathy, diabetic foot ulceration, and infectious disease [8, 13, 14]. The relationship between CVD, LLA and death has not been widely evaluated in people with type 1 diabetes, and fragmentary data have been extrapolated in a large part from studies in population with type 2 diabetes [15–18]. Notably, the difference in the lethal burden induced by CVD or LLA in terms of mortality is still unknown in people with type 1 diabetes. In the current study, we explored whether there is a prognostic difference between a history of CVD and non-traumatic LLA in respect of risk of all-cause death in people with long-standing type 1 diabetes.

## Methods

### Study participants

We used data from three French and Belgian prospective cohorts of people with type 1 diabetes [19–21]. The three studies complied with the Declaration of Helsinki, and the study protocol of each cohort was approved by the Ethics Committee of Angers University Hospital (Angers, France). All participants from the 3 cohorts gave written informed consent. Characteristics of participants at baseline in each single cohort were previously published [22–25], and are shown in Additional Table 1. Briefly, the

Survival Genetic Nephropathy (SURGENE) study was a single center, prospective cohort of all volunteers with type 1 diabetes attending the diabetes clinic at the university hospital of Angers, France [19]. Participants were selected from 1989 to 1996 based on a diagnosis of type 1 diabetes before the age of 40 years, and a duration of diabetes longer than 3 years. The *Génétique de la Néphropathie Diabétique* (GENEDIAB) study was a multi-center cohort conducted in 17 diabetes clinics in France and Belgium (see list of centers in Additional File 1). Participants were recruited from May 1994 to April 1995 based on the diagnosis of type 1 diabetes before the age of 35 years, duration of diabetes of at least 5 years, with a past or present history of pre-proliferative or proliferative diabetic retinopathy requiring laser photocoagulation therapy [20]. The Genesis France-Belgique study was a family-based cohort including probands with type 1 diabetes for at least 5 years [21]. Participants were recruited from November 1998 to December 2000 on the basis of a diagnosis of type 1 diabetes before the age of 35 years, with initial ketosis and requirement for permanent insulin treatment within 1 year of diagnosis, and past or present diagnosis of diabetic retinopathy. Participants were followed from enrolment in each corresponding cohort until death or the latest clinical visit up to May 31, 2019. Data from the 3 cohorts were pooled together for the current analysis. Among 1347 participants enrolled in the 3 cohorts, we excluded 35 participants without LLA data at baseline and 98 subjects without a known vital status or follow-up data within the study period (Additional file 4: Fig. S1). We also excluded 45 participants according to the definition of the exposure (see below).

### Definition of the exposure

Participants were categorized into 4 groups according to the history of CVD (myocardial infarction and/or stroke) and non-traumatic LLA at baseline: (1) people without CVD nor LLA, (2) those with CVD who had not LLA, (3) those with LLA without CVD, and (4) those with both CVD and LLA. To reduce the potential confounding effect related to PAD, participants with a baseline history of PAD in group 1 (n = 37) and group 2 (n = 8) were excluded from the current analysis.

The presence of LLA, myocardial infarction and stroke was reported at baseline in the case report form by using

**Table 1** Characteristics of participants by history of CVD and LLA at baseline

	All participants	History of CVD and/or LLA at baseline				P
		Absent	CVD only	LLA only	Both CVD and LLA	
N	1169	1038	49 (4.2)	62 (5.3)	20 (1.7)	
Cohort membership, n (%)						<0.0001
SURGENE	337 (29)	330 (32)	5 (10)	2 (3)	0 (0)	
GENEDIAB	376 (32)	284 (27)	22 (45)	54 (87)	16 (80)	
GENESIS	456 (39)	424 (41)	22 (45)	6 (10)	4 (20)	
Male sex, n (%)	643 (55)	552 (53)	32 (65)	41 (66)	18 (90)	0.0009
Age (years)	40 ± 13	39 ± 12	52 ± 10 <sup>a</sup>	50 ± 12 <sup>a</sup>	51 ± 10 <sup>a</sup>	<0.0001
Age of diabetes onset (years)	15 (10, 23)	14 (10, 23)	19 (11, 29)	18 (12, 25)	16 (11, 24)	0.04
Duration of diabetes (years)	23 ± 11	22 ± 11	31 ± 9 <sup>a</sup>	32 ± 9 <sup>a</sup>	34 ± 7 <sup>a</sup>	<0.0001
Body mass index (kg/m <sup>2</sup> )	24 ± 3	24 ± 3	25 ± 4	24 ± 4	24 ± 3	0.20
Tobacco smoking, n (%)						<0.0001
Former	119 (10)	91 (9)	9 (18)	15 (24)	4 (20)	
Current	241 (21)	210 (20)	8 (16)	14 (23)	9 (45)	
Systolic blood pressure (mmHg)	132 ± 19	131 ± 18	140 ± 18 <sup>a</sup>	146 ± 22 <sup>a</sup>	143 ± 13 <sup>a</sup>	<0.0001
Diastolic blood pressure (mmHg)	76 ± 11	76 ± 11	78 ± 9	81 ± 10 <sup>a</sup>	81 ± 8 <sup>a</sup>	0.0001
HbA1c (%)	8.8 ± 1.8	8.8 ± 1.8	8.7 ± 1.1	9.2 ± 2.7	8.5 ± 1.5	0.33
HbA1c (mmol/mol)	72 ± 20	72 ± 20	71 ± 12	77 ± 29	70 ± 16	
Total cholesterol (mmol/l) <sup>1</sup>	5.6 ± 1.4	5.6 ± 1.4	6.2 ± 1.4 <sup>a</sup>	5.7 ± 1.4	6.3 ± 1.3 <sup>a</sup>	0.04
eGFR (mL/min/1.73m <sup>2</sup> )	86 ± 30	89 ± 28	66 ± 31 <sup>a</sup>	64 ± 32 <sup>a</sup>	61 ± 34 <sup>a</sup>	<0.0001
Urinary albumin concentration (mg/l)	14 (6, 94)	13 (5, 77)	17 (6, 501)	91 (16, 457)	381 (36, 805)	<0.0001
Diabetic kidney disease, n (%)	484 (41)	398 (38)	26 (53)	42 (68)	18 (90)	<0.0001
Diabetic retinopathy stages, n (%)						<0.0001
Non-proliferative	276 (24)	265 (26)	7 (14)	1 (2)	3 (15)	
Pre-proliferative	182 (16)	160 (15)	9 (18)	10 (16)	3 (15)	
Proliferative	503 (43)	405 (39)	33 (67)	51 (82)	14 (70)	
Peripheral diabetic neuropathy, n (%)	412 (35)	314 (30)	29 (59)	51 (82)	18 (90)	<0.0001
Peripheral artery disease, n (%)	71 (8)	0	0	52 (88)	19 (100)	<0.0001
Antihypertensive drugs, n (%)	469 (40)	371 (36)	39 (80)	42 (68)	17 (85)	<0.0001
Lipid-lowering drugs, n (%)	69 (6)	52 (5)	9 (18)	4 (6)	4 (20)	0.0002

Quantitative variables are presented as mean ± SD or as median (25th–75th percentiles) for those with skewed distribution (age of diabetes onset and urinary albumin concentration)

Comparisons were performed using  $\chi^2$ , ANOVA or Kruskal–Wallis tests. Post-hoc test was performed following ANOVA to determine significantly different values compared to subjects without condition (a).  $P < 0.05$  was considered as significant

CVD cardiovascular disease (myocardial infarction and/or stroke), LLA lower-limb amputation

<sup>1</sup> Data available for 664 participants

a dedicated questionnaire. An independent adjudication committee validated these conditions based on medical and surgical reports. Myocardial infarction was diagnosed based on the presence of clinical signs, abnormalities in electrocardiogram, and elevated enzymatic biomarkers. Stroke was diagnosed based on abnormal neurological examination and/or cerebral CT Scan evidence. The history of LLA at baseline was defined as either a minor (below the ankle amputation consisting of at least 1-ray metatarsal resection) or major (above the ankle amputation consisting of transtibial or transfemoral) amputation resulting from nontraumatic causes.

#### Definition of other clinical conditions at baseline

Peripheral diabetic neuropathy was diagnosed based on the absence of Achilles reflex and the loss of the 10-g monofilament sensation and/or the loss of vibration perception. Lower-limb PAD was defined as the absence of foot pulses and/or intermittent claudication. Diabetic retinopathy was staged as absent, non-proliferative, and proliferative. The Chronic Kidney Disease Epidemiology Collaboration (CKD-EPI) creatinine equation was applied to estimate the glomerular filtration rate (eGFR). History of diabetic kidney disease (DKD) was defined as  $eGFR < 60$  mL/min/1.73 m<sup>2</sup> and/or urinary albumin concentration (UAC)  $\geq 30$  mg/l.

### Study endpoint

The endpoint was any death occurring during follow-up, regardless of the causes. The vital status was obtained from hospital case records or by contacting the family physician of the participants. It was cross-checked by contacting the civil registry of the birth place of participants. Death cases were centrally reviewed by an independent adjudication committee by using hospitalization records or all other relevant supporting documents.

Data regarding causes of deaths were available only in a subset of participants. Cardiovascular mortality was defined as deaths resulting from arrhythmia, acute myocardial infarction, heart failure, stroke, cardiovascular haemorrhage, PAD, end-stage kidney disease, dead in bed syndrome, sudden deaths or undetermined causes. Non cardiovascular mortality was defined as deaths resulting from cancer, infectious, pulmonary, gastrointestinal, hepatobiliary or pancreatic disease, metabolic complications, suicide, drug reaction or overdose, and trauma or unintentional injuries.

### Statistical methods

Quantitative variables were expressed as mean  $\pm$  SD or median (25th, 75th percentiles) for variables with skewed distribution. Categorical variables were presented as the number of participants with the corresponding percentage. Chi-squared, ANOVA, Wilcoxon or Kruskal–Wallis tests were used to compare key characteristics of participants at baseline.

Kaplan–Meier curves were used to plot survival rates during follow-up according to the exposure (absence of CVD and LLA, CVD only, LLA only or both CVD and LLA). Incidence curves were compared using the log-rank test. We fitted Cox proportional hazards survival regression models to estimate hazard ratios (HR), with associated 95% CI, for all-cause death in participants with CVD, LLA or both, compared to those without these conditions at baseline. Analyses were adjusted for age, sex and cohort membership (model 1), plus other relevant confounding variables: history of tobacco smoking, duration of diabetes, HbA1c, BMI, systolic blood pressure, UAC, eGFR, and use of antihypertensive and lipid-lowering drugs at baseline (model 2). The Schoenfeld residuals method was used to check the proportional hazards assumption for the association between exposure and all-cause death.

We have also estimated the loss in life-time expectancy within study period in participants with baseline history of CVD, LLA or both conditions, compared to those without these conditions, using the pseudo-observation approach on survival data [26, 27].

We performed a series of sensitivity analyses. First, we evaluated the association between the exposure and the endpoint after adjusting for total cholesterol and history of diabetic peripheral neuropathy and retinopathy stages at baseline (on top of model 2) in a subset of participants from whom these data were available. Second, we assessed the risk of all-cause death according to baseline history of CVD and/or LLA using an alternative definition: without exclusion of participants with a baseline history of PAD in groups 1 and 2. Third, we tested the association of interest considering the baseline history of DKD in the exposure definition. Hence, participants were categorized into 5 groups: (1) people without DKD, CVD or LLA; (2) those with DKD, without CVD or LLA; (3) those with CVD without DKD or LLA; (4) those with LLA without CKD or CVD; and (5) those with 2 conditions or more. Finally, we assessed the association between baseline history of CVD or LLA and the risk of cardiovascular death in a subset of participants from whom causes of death were documented (see Additional file 2, 3).

A *p* value less than 0.05 was considered as significant. Statistical analyses were performed using SAS software, version 9.4 (SAS Institute, [www.sas.com](http://www.sas.com)) and Stata software, version 13 (StataCorp, [www.stata.com](http://www.stata.com)).

## Results

### Characteristics of participants at baseline

Among 1169 participants, 643 (55%) subjects were men, and 31% former or current tobacco smokers. The mean  $\pm$  SD age, duration of diabetes, HbA1c, systolic and diastolic blood pressure were  $40 \pm 13$  years,  $23 \pm 11$  years,  $8.8 \pm 1.8\%$ ,  $132 \pm 19$  and  $76 \pm 11$  mmHg, respectively (Table 1). A history of CVD and/or LLA was present at baseline in 131 (11.2%) participants: CVD only 49 (4.2%), LLA only 62 (5.3%) and both CVD and LLA 20 (1.7%). Characteristics of participants according to these conditions are shown in Table 1. Participants with a baseline history of CVD or/and LLA, compared to those without these conditions, were older, more frequently men and smokers (Table 1). They had a longer duration of diabetes, higher systolic and diastolic blood pressure, total cholesterol and UAC, and a lower eGFR. They were also more likely to have a history of DKD, proliferative retinopathy, or peripheral neuropathy, and to use antihypertensive or lipid-lowering drugs (Table 1). Baseline history of PAD was present in 88% participants with LLA alone and 100% of those with both CVD and LLA. By study design, PAD was absent in participants without CVD nor LLA and in those with only CVD.

### Incidence of all-cause death during follow-up

Three hundred and four (26%) patients died during a median (25th, 75th percentiles) duration of follow-up of 17 (10–22) years, corresponding to 18,426 person-years and an incidence rate of 16 (95% CI, 15–18) per 1000 person-years. Characteristics of participants at baseline according to the incidence of all-cause death are shown in Table 2. Patients who died, compared with those who were still alive within study period, were older at baseline, and more frequently men (Table 2). They had a longer duration of diabetes, higher systolic and diastolic blood pressure, total cholesterol, and UAC, and a lower eGFR. The baseline history of tobacco smoking, DKD, proliferative retinopathy, peripheral neuropathy or PAD, and the use of antihypertensive or lipid-lowering drugs were more frequent in patients who died, compared with those who were still alive during follow-up (Table 2).

### Incidence of all-cause death by baseline history of CVD and/or LLA

The cumulative incidence and the incidence rates of all-cause death were significantly higher in participants with a baseline history of CVD, LLA or both, compared to those without these conditions (Fig. 1 and Table 3). The relative risk of all-cause death was higher in participants with CVD (HR 2.47 [95% CI 1.67–3.66]), LLA (2.38 [1.68–3.38]) or both conditions (8.50 [5.09–14.19]), compared to those without these conditions at baseline, after adjusting for age, sex and cohort membership ( $p < 0.0001$  for all analyses). Similar results were observed after adjusting for further confounding variables (model 2, Table 3). No prognostic difference was observed between baseline history of CVD and LLA in regards of risk of all-cause death (CVD versus LLA: HR 0.87 [0.54–1.41],  $p = 0.57$ ) after adjusting for model 2. The presence of both conditions at baseline, versus CVD alone (HR 2.72, [1.48–4.99],  $p = 0.001$ ) or versus LLA alone (HR 2.36, [1.34–4.18],  $p = 0.003$ ), was associated with increased risk of all-cause death.

### Sensitivity analyses

#### All-cause death by baseline history of CVD and/or LLA using an extended adjusting model

Associations between baseline history of CVD and/or LLA and all-cause death had similar magnitudes after adjustment for total cholesterol and history of diabetic peripheral neuropathy and retinopathy stages at baseline (further to adjusting for model 2) in 633 participants for whom these data were available: CVD alone (1.75 [1.03–2.96],  $p = 0.04$ ), LLA alone (1.98 [1.31–3.00],  $p = 0.001$ ), or both CVD and LLA (4.75 [2.57–8.78],  $p < 0.0001$ ).

**Table 2** Characteristics of participants at baseline by the incidence of all-cause death during follow-up

	All-cause death		P
	No	Yes	
N	865	304	
Cohort membership, n (%)			< 0.0001
SURGENE	275 (32)	62 (20)	
GENEDIAB	212 (25)	164 (54)	
GENESIS	378 (44)	78 (26)	
Male sex, n (%)	452 (52)	191 (63)	0.001
Age (years)	37 ± 11	49 ± 13	< 0.0001
Age of diabetes onset (years)	14 (10, 22)	17 (12, 27)	< 0.0001
Duration of diabetes (years)	21 ± 11	30 ± 10	< 0.0001
Body mass index (kg/m <sup>2</sup> )	24 ± 3	24 ± 4	0.36
Tobacco smoking, n (%)			< 0.0001
Former smokers	69 (8)	50 (16)	
Current smokers	165 (19)	76 (25)	
Systolic blood pressure (mmHg)	129 ± 18	141 ± 19	< 0.0001
Diastolic blood pressure (mmHg)	75 ± 11	79 ± 11	< 0.0001
HbA1c (%)	8.8 ± 1.8	8.8 ± 1.9	0.52
HbA1c (mmol/mol)	72 ± 20	73 ± 21	
Total cholesterol (mmol/l) <sup>a</sup>	5.5 ± 1.4	5.9 ± 1.5	0.0003
eGFR (mL/min/1.73m <sup>2</sup> )	92 ± 27	70 ± 31	< 0.0001
Urinary albumin concentration (mg/l)	11 (5, 51)	45 (8, 552)	< 0.0001
Diabetic kidney disease, n (%)	299 (35)	185 (61)	< 0.0001
Diabetic retinopathy stages, n (%)			< 0.0001
Non-proliferative	242 (28)	34 (11)	
Pre-proliferative	123 (14)	59 (19)	
Proliferative	307 (35)	196 (64)	
Peripheral diabetic neuropathy, n (%)	246 (28)	166 (55)	< 0.0001
Peripheral artery disease, n (%)	16 (3)	55 (23)	< 0.0001
Antihypertensive drugs, n (%)	283 (33)	186 (62)	< 0.0001
Lipid-lowering drugs, n (%)	37 (4)	32 (10)	< 0.0001

Quantitative variables are presented as mean ± SD or as median (25th–75th percentiles) for those with skewed distribution (age of diabetes onset and urinary albumin concentration)

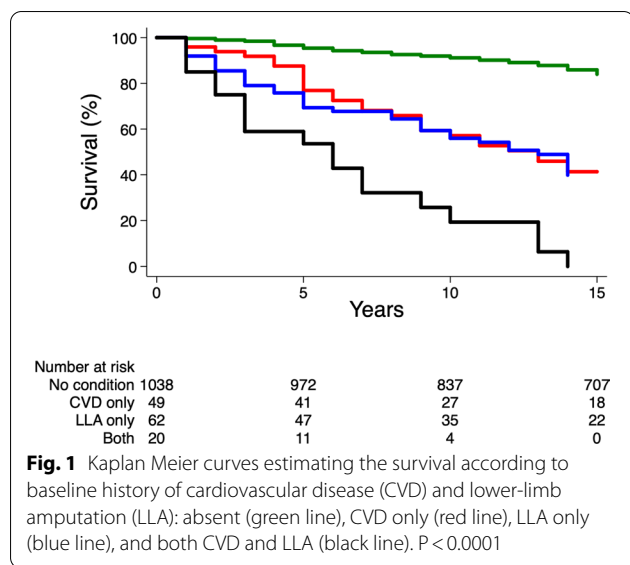
Comparisons were performed using  $\chi^2$ , ANOVA or Wilcoxon tests

$P < 0.05$  was considered as significant

<sup>a</sup> Data available for 664 participants

#### All-cause death by baseline history of CVD and/or LLA using an alternative definition (without exclusion of participants with PAD in groups 1 and 2)

A history of CVD only, LLA only and both conditions were present at baseline in 57 (4.7%), 62 (5.1%) and 20 (1.7%) participants, respectively. The risk of all-cause death was significantly higher in participants with a baseline history of CVD only (HR 2.02 [95% CI 1.39–2.94],  $p = 0.0002$ ), LLA only (2.23 [1.54–3.23],  $p < 0.0001$ ), or



both conditions (5.29 [3.14–8.90], p < 0.0001), compared to those without these conditions.

**All-cause death by baseline history of DKD, CVD and/or LLA**

DKD only, CVD only and LLA only were present at baseline in 423 (35%), 25 (2.1%) and 20 (1.7%) participants, respectively. The risk of all-cause death was similarly increased in participants with a baseline history of DKD only (HR 2.30 [95% CI, 1.75–3.01], p < 0.0001), CVD only (2.50 [1.38–4.52], p = 0.003) and LLA only (2.11 [1.13–3.92], p = 0.02), compared to those without these 3 conditions. The presence of 2 of these conditions or more was observed at baseline in 92 (7.6%) participants, and it was associated with excess risk of death (5.88 [4.21–8.20], p < 0.0001).

**Incidence of cardiovascular death by baseline history of CVD and/or LLA**

Causes of death were documented in 97 patients: 13 participants were excluded according to study flow chart

(Additional file 4: Fig. S1), and then 84 cases were investigated in the current analysis. Deaths from cardiovascular and non-cardiovascular causes were reported in 50 (4.3%) and 34 (2.9%) patients, respectively. Cardiovascular causes were more prevalent than non-cardiovascular causes in people with baseline history of CVD and/or LLA (p < 0.0001, Additional Table 2). The baseline history of CVD (HR 2.98 [95% CI, 1.13–7.91], p = 0.03) or LLA (3.81 [1.28–11.32], p = 0.02) was associated with increased risk of cardiovascular mortality.

**Estimated reduction in life-time expectancy**

Participants with a history of CVD or LLA, compared to those without these conditions, would have a mean (95% CI) reduction in life-time expectancy during the 17 years of follow-up of 3.32 (1.72–4.92) or 3.96 (2.47–5.45) years, respectively (all p < 0.0001, adjusted for model 1). The presence of both CVD and LLA at baseline was associated with 8.11 (5.95–10.26) less years of life expectancy, compared with the absence of these conditions at baseline (p < 0.0001, adjusted for model 1). The estimation of loss in life-time expectancy during study period was comparable after adjusting for model 2: CVD 2.79 (1.26–4.32), LLA 3.38 (1.87–4.88), and both CVD and LLA 7.04 (4.76–9.31) years (all p < 0.0001).

**Discussion**

In the present investigation, we compared the effects of a baseline history of CVD (myocardial infarction and/or stroke), nontraumatic LLA or both on the incidence of all-cause death in people with long-standing type 1 diabetes. As expected, CVD or LLA at baseline was each associated with increased risk of all-cause death during follow-up. The original and the key finding of our study was the observation that a baseline LLA conferred a similar prognostic burden than baseline CVD in terms of all-cause death in patients with long-standing type 1 diabetes. The cumulative incidence of all-cause death was 61% and 73% over a median duration of

**Table 3** Risk of all-cause death during follow-up by history of CVD or/and LLA at baseline

	All-cause death			Model 1		Model 2	
	No, n	Yes, n (%)	Incidence rate (95% CI)	Hazard ratios (95% CI)	P	Hazard ratios (95% CI)	P
Absent	827	211 (20)	12 (11–14)	1	–	1	–
Cardiovascular disease only	19	30 (61)	53 (37–76)	2.47 (1.67–3.66)	< 0.0001	2.00 (1.34–3.01)	0.0008
Lower-limb amputation only	17	45 (73)	61 (45–81)	2.38 (1.68–3.38)	< 0.0001	2.26 (1.56–3.28)	< 0.0001
Both conditions	2	18 (90)	156 (99–248)	8.50 (5.09–14.19)	< 0.0001	5.32 (3.14–9.00)	< 0.0001

Incidence rate expressed per 1000 person-years. Hazard ratios (with associated 95% CIs) computed by Cox proportional hazards survival regression analyses, adjusted for cohort membership, sex and age (model 1), plus history of tobacco smoking, duration of diabetes, BMI, HbA1c, systolic blood pressure, urinary albumin concentration, estimated glomerular filtration rate, and use of antihypertensive and lipid-lowering drugs at baseline (model 2). p < 0.05 was considered as significant

follow-up of 17 years in participants with baseline history of LLA or CVD, respectively. Each single condition was associated with two-fold increased risk of all-cause death. The burden of LLA and CVD seemed independent, with an additive effect as the presence of both conditions increased the cumulative incidence (90%), and the adjusted relative risk of all-cause death, 5 times higher compared with the absence of these conditions at baseline. Furthermore, the presence of both conditions at baseline increased the risk of all-cause death, more than 2 times higher compared with the presence of each single condition. The excess risk of all-cause death observed in people with CVD and LLA was mainly driven by cardiovascular causes.

#### **Incidence of all-cause death in people with type 1 diabetes**

The incidence of all-cause death observed in our study is comparable with the recent report in people with long-standing (50-year cohort) type 1 diabetes from the Finnish Diabetic Nephropathy Study (FinnDiane) cohort [28]. However, the rate of mortality in our study is higher than other reports in type 1 diabetes cohorts from USA, Europe and Australia [1, 2, 29]. As in FinnDiane 50-year cohort, the participants in our cohorts were older, and they were diagnosed with type 1 diabetes between 1938 and 1995. Furthermore, GENESIS and GENEDIAB cohorts recruited participants with a history of non-proliferative or proliferative retinopathy. Finally, 41% of participants in our cohorts had a baseline history of DKD, which has been recognized as a major predictor of death in patients with type 1 diabetes [30].

It is worthy to note that the cumulative incidence of all-cause death was high (20%) even in people with type 1 diabetes without a baseline history of CVD or LLA and a rather young age of 40 years at baseline (yet with a long duration of type 1 diabetes). This observation is in line with a recent report from a large Swedish diabetes registry highlighting the early onset of type 1 diabetes and the longer duration of diabetes as important determinants of death and cardiovascular events [4]. The participants in our study were diagnosed with type 1 diabetes at 15 (25th, 75th percentiles, 10, 23) years old, with a duration of diabetes at baseline of  $23 \pm 11$  years. A longer duration of diabetes reflects a high glycaemic load and its related damages.

#### **Effect of cardiovascular disease and lower-limb amputation in life-time expectancy**

Our findings show also that CVD and LLA had a similar impact in terms of loss in life-time expectancy. Among people with type 1 diabetes, those with CVD or LLA may lose about 3 years life-time during the 17-year follow-up

compared with other participants without these conditions, after adjustment for potential confounders. The presence of both conditions exposes to a 7-year loss in life expectancy within study period. It has been shown that people with type 1 diabetes had a drastic reduction in life expectancy, compared with individuals without diabetes [6, 31]. One study estimated that people with type 1 diabetes had an estimated life expectancy at birth 12 years less than that of the general population, using an Australian national data scheme between 1997 and 2010 [31]. Comparable findings were reported in a Scottish cohort of people with type 1 diabetes based on data from 2008 through 2010 [6]. In our present study, we were able to extend those findings in order to estimate and compare the loss in life-time expectancy among people with type 1 diabetes with versus without CVD and/or LLA, followed up to May 31, 2019.

#### **Potential mechanisms linking lower-limb amputation to cardiovascular disease**

The similar poor prognosis observed in participants with baseline CVD and LLA may be explained by common traditional risk factors and conditions [32]. In our study, participants with CVD and LLA shared key risk factors and major diabetes complications. Microvascular disease may also be a trigger of poor prognosis in people with CVD and LLA, independently of traditional risk factors [33–35]. In our study, eGFR decreased, albuminuria increased, neuropathy became more frequent and retinopathy more severe, proportionally to the burden of baseline history of CVD and LLA (either or both together). Of note, we observed that DKD, CVD and LLA (each considered individually) confer a similar risk of all-cause death, twofold higher compared to the absence of these 3 conditions. This finding suggests that DKD may not explain (at least not fully) the poor prognosis observed in people with CVD or LLA. Furthermore, LLA and CVD may also share some pathological mechanisms including endothelial dysfunction, pro-thrombotic states, oxidative stress and systemic inflammation [24, 36–40]. Autoimmune mechanisms have also been suggested as a potential determinant of CVD in people with type 1 diabetes [41].

#### **Strengths and limitations**

The main strength of our study is the assessment of single, joint and differential prognostic effects of baseline history of CVD and LLA on the risk of all-cause death in three multicenter binational cohorts of patients with long-standing type 1 diabetes followed for a median duration of 17 years. We also investigated a comprehensive set of demographic, clinical, and biological features



at baseline, as well as robust and adjudicated conditions at baseline and endpoint during follow-up. Our study has some limitations to acknowledge. The diagnosis of PAD in our study was based on interview and clinical examination, without systematic screening (using specific investigation such as ankle-brachial index) for asymptomatic PAD. Our study does not allow to examine the prognostic burden of PAD independently of LLA since PAD was present at baseline in 88% and 100% in group 3 (participants with LLA alone) and group 4 (both CVD and LLA), respectively. To avoid misinterpretation, we excluded PAD participants from group 1 (without CVD and LLA) and group 2 (with CVD alone). Nevertheless, keeping PAD in these groups did not change our findings. Additionally, we did not have a comprehensive data regarding causes of deaths, which did not allow us to investigate carefully the cause-specific mortality. Finally, our results may not be applied to people with other ethnic backgrounds or low-income and middle-income regions as we investigated only Caucasians from France and Belgium.

## Conclusion

In summary, a baseline history of CVD and LLA had a similar and heavy burden regarding all-cause death in people with long-standing type 1 diabetes. Each single condition exposes to two-fold increased risk of all-cause death, with an additive effect. The presence of both CVD and LLA at baseline exposed to exceedingly excess risk of death, five times higher compared to the absence of these conditions. Our findings encourage a careful consideration of people with type 1 diabetes and LLA as usually recommended for CVD, in terms of management of risk factors, treatments and prevention.

## Abbreviations

CKD: Chronic kidney disease; CKD-EPI: Chronic kidney disease epidemiology collaboration; CVD: Cardiovascular disease; DKD: Diabetic kidney disease; eGFR: Estimated glomerular filtration rate; FinnDiane: Finnish Diabetic Nephropathy Study; GENEDIAB: *Génétique de la Néphropathie Diabétique*; LLA: Lower-limb amputation; PAD: Peripheral artery disease; SURGENE: Survival Genetic Nephropathy; UAC: Urinary albumin concentration.

## Supplementary Information

The online version contains supplementary material available at <https://doi.org/10.1186/s12933-022-01487-8>.

**Additional file 1:** List of contributors to SURGENE, GENEDIAB, and GENESIS studies.

**Additional file 2: Table S1.** Characteristics of participants at baseline in each individual cohort.

**Additional file 3: Table S2.** Causes of deaths.

**Additional file 4: Fig. S1.** Study flowchart.

## Acknowledgements

We thank all the patients who participated to this study as well as their physicians. The list of contributors is available in the Additional file 1. This article is dedicated to the memory of Ronan Roussel who tragically left us recently. Ronan was a distinguished diabetologist and an outstanding scientist with a sharp mind. We all have lost a great friend and a valuable colleague.

## Author contributions

MC, GV, MM and KM designed the study, researched data and drafted the manuscript. PJS, LP, YA, CC, SD, AL, VR, EG, OB, LB, AC, SH and RR researched data, contributed to discussion and reviewed/edited the manuscript. All authors approved the current version of the manuscript. KM is the guarantor of this work and, as such, had full access to all the data and take responsibility for the integrity of the data and the accuracy of the data analyses. All the authors have read and approved the final manuscript.

## Funding

No funding to declare.

## Availability of data and materials

The datasets analysed during the current study are not publicly available due to consideration of intellectual property, due to many ongoing active collaborations, and to continuing analyses by the study investigators, but may be available from the last author on reasonable request.

## Declarations

### Ethics approval and consent to participate

The Ethics Committee of Angers University Hospital (Angers, France) approved the SURGENE, GENEDIAB and GENESIS protocols, and all participants provided written informed consent.

### Consent for publication

Not applicable.

### Competing interests

L.P. reports personal fees and non-financial support from Sanofi, Novo Nordisk, Eli Lilly and MSD. VR had grants from the Servier Diabetes institute, Roche, and Merck Lippa Santé. O.B. reports personal fees and non-financial support from MSD and Sanofi. L.B. reports personal fees and non-financial support from Astra Zeneca, Bayer, BD, BMS, Boehringer Ingelheim, MSD, Novartis, Lilly, Novo Nordisk, Roche, and Sanofi. AS has received lecturer/advisor fees from AstraZeneca, Boehringer Ingelheim, Eli Lilly, Janssen, Merck Sharp and Dohme, Novartis, NovoNordisk, Sanofi and Servier. SH reports personal fees and non-financial support from Astra Zeneca, grants and personal fees from Bayer, personal fees from Boehringer Ingelheim, grants from Dinno Santé, personal fees from Eli Lilly, non-financial support from LVL, personal fees and non-financial support from MSD, personal fees from Novartis, grants from Pierre Fabre Santé, personal fees and non-financial support from Sanofi, personal fees and non-financial support from Servier, personal fees from Valbiotis. RR reports research grants from Sanofi, Novo Nordisk, and Diabnext, consulting and speakers' bureau fees (compensation donated to the nonprofit Foundation APHP for Research) from Sanofi, Novo Nordisk, Eli Lilly, Boehringer-Ingelheim, Mundipharma, Janssen, AstraZeneca, MSD, Medtronic, and Abbott. MM is a consultant for Novo-Nordisk Algerian subsidiary, and has received personal fees from Novo-Nordisk, Merck-Sharp and Dohme, and Eli Lilly. KM reports personal fees or non-financial support from Novo Nordisk, Sanofi, Astra-Zeneca, Eli Lilly, Abbott, Boehringer-Ingelheim and LifeScan. Authors declare no other potential conflict of interest relevant to this article.

### Author details

<sup>1</sup>Department of Endocrinology, Diabetes and Nutrition, CEDEX, Bordeaux University Hospital, Hôpital Haut-Lévêque, Avenue de Magellan, 33604 Pessac, France. <sup>2</sup>Service d'Endocrinologie Diabétologie Nutrition, Hôpital Bichat, Fédération de Diabétologie de Paris, AP-HP, Université de Paris, Paris, France. <sup>3</sup>INEM, INSERM, Université de Paris, Paris, France. <sup>4</sup>UFR de Médecine et Pharmacie, Université de Poitiers, Poitiers, France. <sup>5</sup>Centre d'Investigation Clinique, CHU de Poitiers, Poitiers, France. <sup>6</sup>Inserm, CIC 1402, Poitiers, France. <sup>7</sup>Service d'Endocrinologie Diabétologie Nutrition, CHU d'Angers, Angers, France.

<sup>8</sup>Faculty of Medicine, University of Bordeaux, Bordeaux, France. <sup>9</sup>INSERM U1219, Bordeaux Population Health Research Center, Bordeaux, France. <sup>10</sup>Service de Diabétologie et Métabolisme, APHP, Groupe Hospitalier La Pitié-Salpêtrière, Sorbonne Université, Paris, France. <sup>11</sup>INSERM, UMRS 1138, Centre de Recherche des Cordeliers, Sorbonne Université, Paris, France. <sup>12</sup>Service d'Endocrinologie, Hôpital Bégin, Saint Mandé, France. <sup>13</sup>CHU Liège, Liège Université, Liège, Belgique. <sup>14</sup>Institut du Thorax, INSERM, CNRS, UNIV Nantes, CHU Nantes, Nantes, France. <sup>15</sup>Clinique Ambroise Paré, Neuilly-sur-Seine, France. <sup>16</sup>Biology of Cardiovascular Diseases, INSERM Unit 1034, Pessac, France.

Received: 3 February 2022 Accepted: 28 February 2022

Published online: 09 May 2022

## References

- Harding JL, Shaw JE, Peeters A, Davidson S, Magliano DJ. Age-Specific trends from 2000–2011 in all-cause and cause-specific mortality in type 1 and type 2 diabetes: a cohort study of more than one million people. *Diabetes Care*. 2016;39(6):1018–26.
- Rawshani A, Rawshani A, Franzen S, Eliasson B, Svensson AM, Miftaraj M, et al. Mortality and cardiovascular disease in type 1 and type 2 diabetes. *N Engl J Med*. 2017;376(15):1407–18.
- Harjutsalo V, Pongrac Barlovic D, Groop PH. Long-term population-based trends in the incidence of cardiovascular disease in individuals with type 1 diabetes from Finland: a retrospective, nationwide, cohort study. *Lancet Diabetes Endocrinol*. 2021. [https://doi.org/10.1016/S2213-8587\(21\)00172-8](https://doi.org/10.1016/S2213-8587(21)00172-8).
- Rawshani A, Sattar N, Franzen S, Rawshani A, Hattersley AT, Svensson AM, et al. Excess mortality and cardiovascular disease in young adults with type 1 diabetes in relation to age at onset: a nationwide, register-based cohort study. *Lancet*. 2018;392(10146):477–86.
- Khunti K, Davies M, Majeed A, Thorsted BL, Wolden ML, Paul SK. Hypoglycemia and risk of cardiovascular disease and all-cause mortality in insulin-treated people with type 1 and type 2 diabetes: a cohort study. *Diabetes Care*. 2015;38(2):316–22.
- Livingstone SJ, Levin D, Looker HC, Lindsay RS, Wild SH, Joss N, et al. Estimated life expectancy in a Scottish cohort with type 1 diabetes, 2008–2010. *JAMA*. 2015;313(1):37–44.
- Olafsdottir AF, Svensson AM, Pivodic A, Gudbjornsdottir S, Nystrom T, Wedel H, et al. Excess risk of lower extremity amputations in people with type 1 diabetes compared with the general population: amputations and type 1 diabetes. *BMJ Open Diabetes Res Care*. 2019;7(1):e000602.
- Boulton AJ, Vileikyte L, Ragnarson-Tennvall G, Apelqvist J. The global burden of diabetic foot disease. *Lancet*. 2005;366(9498):1719–24.
- Kerr M, Barron E, Chadwick P, Evans T, Kong WM, Rayman G, et al. The cost of diabetic foot ulcers and amputations to the National Health Service in England. *Diabet Med*. 2019. <https://doi.org/10.1111/dme.13973>.
- Zhang Y, Lazzarini PA, McPhail SM, van Netten JJ, Armstrong DG, Pacella RE. Global disability burdens of diabetes-related lower-extremity complications in 1990 and 2016. *Diabetes Care*. 2020;43(5):964–74.
- Mohammedi K, Potier L, Belhatem N, Matallah N, Hadjadj S, Roussel R, et al. Lower-extremity amputation as a marker for renal and cardiovascular events and mortality in patients with long standing type 1 diabetes. *Cardiovasc Diabetol*. 2016;15:5.
- Mohammedi K, Harrap S, Mancía G, Marre M, Poulter N, Chalmers J, et al. History of lower-limb complications and risk of cancer death in people with type 2 diabetes. *Cardiovasc Diabetol*. 2021;20(1):3.
- Ndip A, Lavery LA, Lafontaine J, Rutter MK, Vardhan A, Vileikyte L, et al. High levels of foot ulceration and amputation risk in a multiracial cohort of diabetic patients on dialysis therapy. *Diabetes Care*. 2010;33(4):878–80.
- Armstrong DG, Boulton AJM, Bus SA. Diabetic foot ulcers and their recurrence. *N Engl J Med*. 2017;376(24):2367–75.
- Schofield CJ, Libby G, Brennan GM, MacAlpine RR, Morris AD, Leese GP. Mortality and hospitalization in patients after amputation: a comparison between patients with and without diabetes. *Diabetes Care*. 2006;29(10):2252–6.
- Icks A, Scheer M, Morbach S, Genz J, Haastert B, Giani G, et al. Time-dependent impact of diabetes on mortality in patients after major lower extremity amputation: survival in a population-based 5-year cohort in Germany. *Diabetes Care*. 2011;34(6):1350–4.
- Thorud JC, Plemmons B, Buckley CJ, Shibuya N, Jupiter DC. Mortality after nontraumatic major amputation among patients with diabetes and peripheral vascular disease: a systematic review. *J Foot Ankle Surg*. 2016;55(3):591–9.
- Cascini S, Agabiti N, Davoli M, Uccioli L, Meloni M, Giurato L, et al. Survival and factors predicting mortality after major and minor lower-extremity amputations among patients with diabetes: a population-based study using health information systems. *BMJ Open Diabetes Res Care*. 2020. <https://doi.org/10.1136/bmjdr-2020-001355>.
- Hadjadj S, Belloum R, Bouhanick B, Gallois Y, Guilloteau G, Chatellier G, et al. Prognostic value of angiotensin-I converting enzyme I/D polymorphism for nephropathy in type 1 diabetes mellitus: a prospective study. *J Am Soc Nephrol*. 2001;12(3):541–9.
- Marre M, Jeunemaitre X, Gallois Y, Rodier M, Chatellier G, Sert C, et al. Contribution of genetic polymorphism in the renin-angiotensin system to the development of renal complications in insulin-dependent diabetes: Genetique de la Nephropathie Diabetique (GENEDIAB) study group. *J Clin Invest*. 1997;99(7):1585–95.
- Hadjadj S, Pean F, Gallois Y, Passa P, Aubert R, Weekers L, et al. Different patterns of insulin resistance in relatives of type 1 diabetic patients with retinopathy or nephropathy: the Genesis France-Belgium Study. *Diabetes Care*. 2004;27(11):2661–8.
- Mohammedi K, Bellili-Munoz N, Driss F, Roussel R, Seta N, Fumeron F, et al. Manganese superoxide dismutase (SOD2) polymorphisms, plasma advanced oxidation protein products (AOPP) concentration and risk of kidney complications in subjects with type 1 diabetes. *PLoS ONE*. 2014;9(5):e96916.
- Mohammedi K, Patente TA, Bellili-Munoz N, Driss F, Le Nagard H, Fumeron F, et al. Glutathione peroxidase-1 gene (GPX1) variants, oxidative stress and risk of kidney complications in people with type 1 diabetes. *Metabolism*. 2016;65(2):12–9.
- Sanchez M, Roussel R, Hadjadj S, Moutairou A, Marre M, Velho G, et al. Plasma concentrations of 8-hydroxy-2'-deoxyguanosine and risk of kidney disease and death in individuals with type 1 diabetes. *Diabetologia*. 2018;61(4):977–84.
- Sanchez M, Hoang S, Kannengiesser C, Potier L, Hadjadj S, Marre M, et al. Leukocyte telomere length, DNA oxidation, and risk of lower-extremity amputation in patients with long-standing type 1 diabetes. *Diabetes Care*. 2020;43(4):828–34.
- Andersen PK. Decomposition of number of life years lost according to causes of death. *Stat Med*. 2013;32(30):5278–85.
- Overgaard MAP, Parner ET. Regression analysis of censored data using pseudo-observations: an update. *Stata J*. 2015;15(3):809–21.
- Harjutsalo V, Barlovic DP, Gordin D, Forsblom C, King G, Groop PH. Presence and determinants of cardiovascular disease and mortality in individuals with type 1 diabetes of long duration: the FinnDiane 50 years of diabetes study. *Diabetes Care*. 2021. <https://doi.org/10.2337/dc20-2816>.
- Costacou T, Guo J, Miller RG, Orchard TJ. Excess mortality and cardiovascular disease risk in type 1 diabetes. *Lancet*. 2019;393(10175):985.
- Groop PH, Thomas MC, Moran JL, Waden J, Thorn LM, Makinen VP, et al. The presence and severity of chronic kidney disease predicts all-cause mortality in type 1 diabetes. *Diabetes*. 2009;58(7):1651–8.
- Huo L, Harding JL, Peeters A, Shaw JE, Magliano DJ. Life expectancy of type 1 diabetic patients during 1997–2010: a national Australian registry-based cohort study. *Diabetologia*. 2016;59(6):1177–85.
- Hallstrom S, Svensson AM, Pivodic A, Olafsdottir AF, Londahl M, Wedel H, et al. Risk factors and incidence over time for lower extremity amputations in people with type 1 diabetes: an observational cohort study of 46,088 patients from the Swedish National Diabetes Registry. *Diabetologia*. 2021. <https://doi.org/10.1007/s00125-021-05550-z>.
- Mohammedi K, Woodward M, Marre M, Colagiuri S, Cooper M, Harrap S, et al. Comparative effects of microvascular and macrovascular disease on the risk of major outcomes in patients with type 2 diabetes. *Cardiovasc Diabetol*. 2017;16(1):95.
- Mohammedi K, Abouleka Y, Carpentier C, Potier L, Dubois S, Foussard N, et al. Association between the ACE insertion/deletion polymorphism and risk of lower-limb amputation in patients with long-standing type 1 diabetes. *Diabetes Care*. 2021. <https://doi.org/10.2337/dc21-0973>.
- Beckman JA, Duncan MS, Damrauer SM, Wells QS, Barnett JV, Wasserman DH, et al. Microvascular disease, peripheral artery disease, and amputation. *Circulation*. 2019;140(6):449–58.

36. Mohammadi K, Bellili-Munoz N, Marklund SL, Driss F, Le Nagard H, Patente TA, et al. Plasma extracellular superoxide dismutase concentration, allelic variations in the SOD3 gene and risk of myocardial infarction and all-cause mortality in people with type 1 and type 2 diabetes. *Cardiovasc Diabetol*. 2015;14:845.
37. Nin JW, Ferreira I, Schalkwijk CG, Prins MH, Chaturvedi N, Fuller JH, et al. Levels of soluble receptor for AGE are cross-sectionally associated with cardiovascular disease in type 1 diabetes, and this association is partially mediated by endothelial and renal dysfunction and by low-grade inflammation: the EURODIAB Prospective Complications Study. *Diabetologia*. 2009;52(4):705–14.
38. Giacco F, Brownlee M. Oxidative stress and diabetic complications. *Circ Res*. 2010;107(9):1058–70.
39. Nativel M, Schneider F, Saulnier PJ, Gand E, Ragot S, Meilhac O, et al. Prognostic values of inflammatory and redox status biomarkers on the risk of major lower-extremity artery disease in individuals with type 2 diabetes. *Diabetes Care*. 2018;41(10):2162–9.
40. Alivon M, Vo-Duc Phuong T, Vignon V, Bozec E, Khettab H, Hanon O, et al. A novel device for measuring arterial stiffness using finger-toe pulse wave velocity: validation study of the pOpmetre(R). *Arch Cardiovasc Dis*. 2015;108(4):227–34.
41. Sousa GR, Pober D, Galderisi A, Lv H, Yu L, Pereira AC, et al. Glycemic control, cardiac autoimmunity, and long-term risk of cardiovascular disease in type 1 diabetes mellitus. *Circulation*. 2019;139(6):730–43.

### Publisher's Note

Springer Nature remains neutral with regard to jurisdictional claims in published maps and institutional affiliations.

Ready to submit your research? Choose BMC and benefit from:

- fast, convenient online submission
- thorough peer review by experienced researchers in your field
- rapid publication on acceptance
- support for research data, including large and complex data types
- gold Open Access which fosters wider collaboration and increased citations
- maximum visibility for your research: over 100M website views per year

At BMC, research is always in progress.

Learn more [biomedcentral.com/submissions](https://biomedcentral.com/submissions)

