



HAL
open science

**The complete mitochondrial genomes of the higher termites
Labiotermes labralis and Embiratermes neotenicus
(Termitidae: Syntermitinae)**

Vincent Hervé, Andreas Brune

► **To cite this version:**

Vincent Hervé, Andreas Brune. The complete mitochondrial genomes of the higher termites *Labiotermes labralis* and *Embiratermes neotenicus* (Termitidae: Syntermitinae). *Mitochondrial DNA Part B Resources*, 2017, 2 (1), pp.109-110. <10.1080/23802359.2017.1289349>. <hal-03695665>

HAL Id: hal-03695665

<https://hal.science/hal-03695665v1>

Submitted on 10 Jan 2024



HAL is a multi-disciplinary open access archive for the deposit and dissemination of scientific research documents, whether they are published or not. The documents may come from teaching and research institutions in France or abroad, or from public or private research centers.

L'archive ouverte pluridisciplinaire **HAL**, est destinée au dépôt et à la diffusion de documents scientifiques de niveau recherche, publiés ou non, émanant des établissements d'enseignement et de recherche français ou étrangers, des laboratoires publics ou privés.



Distributed under a Creative Commons CC BY 4.0 - Attribution - International License

The complete mitochondrial genomes of the higher termites *Labiotermes labralis* and *Embiratermes neotenicus* (Termitidae: Syntermitinae)

Vincent Hervé  and Andreas Brune 

Department of Biogeochemistry, Max Planck Institute for Terrestrial Microbiology, Marburg, Germany

ABSTRACT

The complete mitochondrial genomes (mitogenomes) of two higher termites were reconstructed from the metagenomes of individual gut compartments with more than 2000-fold coverage. The circular mitogenomes of *Labiotermes labralis* (accession number KY436201) and *Embiratermes neotenicus* (accession number KY436202) have a length of 15,935 and 15,868 bp and an overall G+C content of 30.7 mol% and 33.7 mol%, respectively, and both have an asymmetric nucleotide composition. Genome structure and orientation are the same as in other termites and in the ancestral insect mitogenome. These data further expand arthropod mitogenome databases, which have become an important resource in ecological, phylogenetic and evolutionary studies.

ARTICLE HISTORY

Received 18 January 2017
Revised 20 January 2017
Accepted 28 January 2017

KEYWORDS

Termite; mitogenome;
Isoptera; Termitidae;
Syntermitinae

Over the last few years, mitochondrial genomes (mitogenomes) have received strong interest by both evolutionary biologists and ecologists (Crampton-Platt et al. 2016). The number of available arthropod mitogenomes, especially from insects, has greatly increased during the last decade (Cameron 2014). The genomic information contained in these mitogenomes not only allows inference of phylogeny and evolutionary history of insects, such as termites, with a unprecedented resolution (Bourguignon et al. 2015), but also provides a phylogenetic framework for monitoring arthropod biodiversity in soils with high-throughput DNA sequencing approaches (Andújar et al. 2015; Crampton-Platt et al. 2015).



Termites are key organisms in tropical ecosystems because they are important soil engineers (Jouquet et al. 2016) and play a significant role in lignocellulose degradation (Brune 2014). Here we report the complete mitochondrial genome sequences of two species of higher termites (Termitidae: Syntermitinae), *Labiotermes labralis* and *Embiratermes neotenicus*, which were reconstructed from the metagenomic reads of the insect guts. Termites were collected in Petit Saut, French Guiana. The DNA of both samples is stored at the Max Planck Institute of Terrestrial Microbiology, Marburg, Germany.

The mitogenomes were reconstructed using a strategy that has proven to be efficient for other termite species (Dietrich & Brune 2016; Qian 2016). Metagenomes of individual gut compartments of *Labiotermes labralis* (segment P1; IMG taxon object ID 3300010369) and *Embiratermes neotenicus* (segment P4; IMG taxon object ID 3300009784) were obtained as previously described (Rossmassler et al. 2015). The quality-trimmed sequencing reads from the gut

metagenomes were collected, and mitochondrial reads were extracted and assembled using a baiting and iterative mapping approach (MITObim version 1.8; Hahn et al. 2013) with the complete mitogenome of *Nasutitermes triodiae* (accession number JX144940) as reference genome. The resulting mitogenomes were circularized and then annotated with the Improved *de novo* Metazoan Mitochondrial Genome Annotation (MITOS) webserver (Bernt et al. 2013; <http://mitos.bioinf.uni-leipzig.de/>).

The original metagenomic dataset of *Labiotermes labralis* consisted of 191,583,421 raw reads, from which 244,794 mitochondrial reads were recruited and assembled into one circular contig of 15,935 bp. The mitogenome sequence had an average coverage of 2023-fold, an asymmetric nucleotide composition (42.9% A, 19.2% C, 11.4% G, 26.5% T) and an overall G+C content of 30.7 mol% (accession number KY436201). The original metagenomic dataset of *Embiratermes neotenicus* consisted of 209,047,724 raw reads, from which 269,723 mitochondrial reads were recruited and assembled into one circular contig of 15,868 bp, with an average coverage of 2418-fold, an asymmetric nucleotide composition (42.5% A, 21.6% C, 12.1% G, 23.8% T) and an overall G+C content of 33.7 mol% (accession number KY436202). These values are consistent with the length and nucleotide composition of other higher termite mitogenomes (Bourguignon et al. 2015; Dietrich & Brune 2016).

Both mitogenomes encode 37 genes including 2 ribosomal RNA (rRNA) genes (12S and 16S rRNA), 22 transfer RNA (tRNA) genes, and 13 protein-coding genes, and also contain a non-coding control region. The protein-coding genes

CONTACT Vincent Hervé  vincent.herve8@gmail.com  Department of Biogeochemistry, Max Planck Institute for Terrestrial Microbiology, Karl-von-Frisch-Strasse 10, 35043 Marburg, Germany

© 2017 The Author(s). Published by Informa UK Limited, trading as Taylor & Francis Group.

This is an Open Access article distributed under the terms of the Creative Commons Attribution License (<http://creativecommons.org/licenses/by/4.0/>), which permits unrestricted use, distribution, and reproduction in any medium, provided the original work is properly cited.

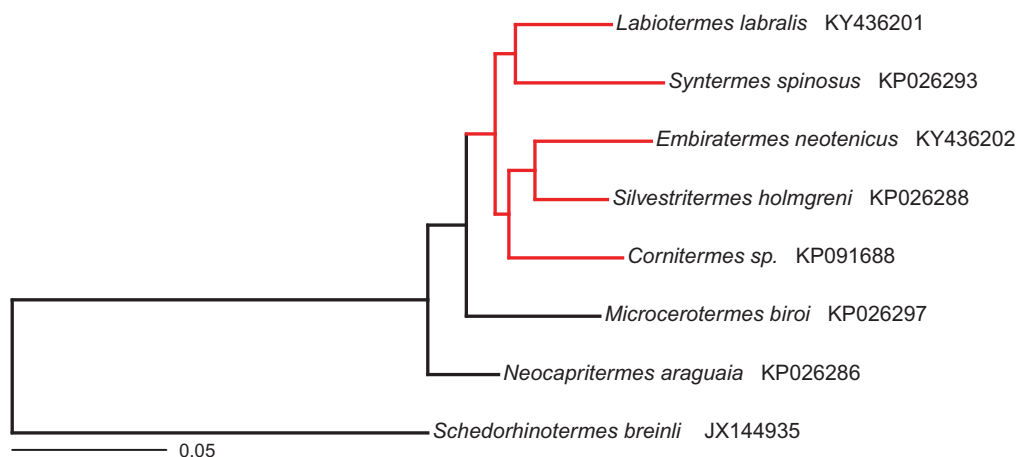


Figure 1. Maximum likelihood phylogenetic tree based on the amino acid sequences of all protein-coding genes of selected termite mitogenomes. The tree was built with RaxML version 8.2.9 (Stamatakis 2014). Members of the Syntermitinae subfamily are highlighted in red. GenBank accession numbers are given after the species name.

encode seven NADH dehydrogenase subunits (*nad1-nad6*, *nad4l*), the cytochrome *b* subunit (*cob*), three cytochrome *c* oxidase subunits (*cox1-cox3*), and two ATP synthase subunits (*atp6*, *atp8*). In both cases, the gene order and orientation were identical to those of other termites, which have retained the organization of the ancestral insect mitochondrial genome (Cameron 2014). Phylogenetic analysis of protein-coding sequences yielded the same tree topology for the Syntermitinae subfamily as previously reported by Bourguignon et al. (2015) using partial mitochondrial genomes of *Labiotermes labralis* and *Embiratermes neotenicus* generated by PCR amplification and Illumina sequencing (Figure 1).

This study adds two complete mitochondrial genomes to the growing list of insect mitogenomes. Such extensions of mitogenome databases are important because they will increase the accuracy of future phylogenetic and evolutionary studies of arthropods, and improve the accuracy of high-throughput analyses in community ecology based on metagenomic datasets (Crampton-Platt et al. 2016).

Disclosure statement

The authors report no conflicts of interest. The authors alone are responsible for the content and writing of the paper.

Funding

This study was funded by the Deutsche Forschungsgemeinschaft in the collaborative research center SFB 987 (Microbial Diversity in Environmental Signal Response) and by the Max-Planck-Gesellschaft.

ORCID

Vincent Hervé  <http://orcid.org/0000-0002-3495-561X>
Andreas Brune  <http://orcid.org/0000-0002-2667-4391>

References

- Andújar C, Arribas P, Ruzicka F, Crampton-Platt A, Timmermans MJTN, Vogler AP. 2015. Phylogenetic community ecology of soil biodiversity using mitochondrial metagenomics. *Mol Ecol.* 24:3603–3617.
- Bernt M, Donath A, Jühling F, Externbrink F, Florentz C, Fritzsche G, Pütz J, Middendorf M, Stadler PF. 2013. MITOS: improved de novo metazoan mitochondrial genome annotation. *Mol Phylogenet Evol.* 69:313–319.
- Bourguignon T, Lo N, Cameron SL, Šobotník J, Hayashi Y, Shigenobu S, Watanabe D, Roisin Y, Miura T, Evans TA. 2015. The evolutionary history of termites as inferred from 66 mitochondrial genomes. *Mol Biol Evol.* 32:406–421.
- Brune A. 2014. Symbiotic digestion of lignocellulose in termite guts. *Nat Rev Microbiol.* 12:168–180.
- Cameron SL. 2014. Insect mitochondrial genomics: implications for evolution and phylogeny. *Annu Rev Entomol.* 59:95–117.
- Crampton-Platt A, Timmermans MJTN, Gimmel ML, Kutty SN, Cockerill TD, Vun Khen C, Vogler AP. 2015. Soup to tree: the phylogeny of beetles inferred by mitochondrial metagenomics of a Bornean rainforest sample. *Mol Biol Evol.* 32:2302–2316.
- Crampton-Platt A, Yu DW, Zhou X, Vogler AP. 2016. Mitochondrial metagenomics: letting the genes out of the bottle. *Gigascience.* 5:15.
- Dietrich C, Brune A. 2016. The complete mitogenomes of six higher termite species reconstructed from metagenomic datasets (*Cornitermes* sp., *Cubitermes ugandensis*, *Microcerotermes parvus*, *Nasutitermes corniger*, *Neocapritermes taracua*, and *Termes hospes*). *Mitochondrial DNA.* 27:3903–3904.
- Hahn C, Bachmann L, Chevreux B. 2013. Reconstructing mitochondrial genomes directly from genomic next-generation sequencing reads – a baiting and iterative mapping approach. *Nucleic Acids Res.* 41:e129.
- Jouquet P, Bottinelli N, Shanbhag RR, Bourguignon T, Traoré S, Abbasi SA. 2016. Termites: the neglected soil engineers of tropical soils. *Soil Sci.* 181:157–165.
- Qian ZQ. 2016. The complete mitogenome of the dampwood termite *Zootermopsis nevadensis* (Insecta: Isoptera: Termitidae). *Mitochondrial DNA.* 27:1163–1164.
- Rossmassler K, Dietrich C, Thompson C, Mikaelyan A, Nonoh JO, Scheffrahn RH, Sillam-Dussès D, Brune A. 2015. Metagenomic analysis of the microbiota in the highly compartmented hindguts of six wood- or soil-feeding higher termites. *Microbiome.* 3:56.
- Stamatakis A. 2014. RAXML version 8: a tool for phylogenetic analysis and post-analysis of large phylogenies. *Bioinformatics.* 30:1312–1313.