



**HAL**  
open science

## High-fidelity glass micro-axicons fabricated by laser-assisted wet etching

Jean-Loup Skora, Olivier Gaiffe, Sylwester Bargiel, Jean-Marc Cote, Laurent  
Tavernier, Michel de Labachellerie, Nicolas Passilly

► **To cite this version:**

Jean-Loup Skora, Olivier Gaiffe, Sylwester Bargiel, Jean-Marc Cote, Laurent Tavernier, et al.. High-fidelity glass micro-axicons fabricated by laser-assisted wet etching. *Optics Express*, 2022, 30 (3), pp.3749-3759. hal-03693032

**HAL Id: hal-03693032**

**<https://hal.science/hal-03693032>**

Submitted on 10 Jun 2022

**HAL** is a multi-disciplinary open access archive for the deposit and dissemination of scientific research documents, whether they are published or not. The documents may come from teaching and research institutions in France or abroad, or from public or private research centers.

L'archive ouverte pluridisciplinaire **HAL**, est destinée au dépôt et à la diffusion de documents scientifiques de niveau recherche, publiés ou non, émanant des établissements d'enseignement et de recherche français ou étrangers, des laboratoires publics ou privés.

# High-fidelity glass micro-axicons fabricated by laser-assisted wet etching

JEAN-LOUP SKORA,<sup>1</sup> OLIVIER GAIFFE,<sup>2</sup> SYLWESTER BARGIEL,<sup>1</sup>  
JEAN-MARC COTE,<sup>1</sup> LAURENT TAVERNIER,<sup>2</sup> MICHEL DE  
LABACHELERIE<sup>1</sup> AND NICOLAS PASSILLY<sup>1,\*</sup>

<sup>1</sup>FEMTO-ST Institute, UMR6174 CNRS, Université Bourgogne Franche-Comté, F-25000, Besançon, France

<sup>2</sup>Laboratoire de Nanomédecine, Imagerie et Thérapeutiques, EA4662, Centre Hospitalier Universitaire, Université Bourgogne Franche-Comté, F-25000, Besançon, France

\*nicolas.passilly@femto-st.fr

**Abstract:** We report on the fabrication of micro-axicons made of glass by laser-assisted wet etching (LAE) and laser polishing. The employed technique, relying on a direct-writing process using a femtosecond laser, allows revealing high fidelity profiles when the exposed glass samples are etched in a heated potassium hydroxide (KOH) solution. The remaining surface roughness is then decreased by carbon dioxide (CO<sub>2</sub>) laser polishing. Such polishing is limited to the superficial layer of the component so that the tip is only slightly rounded, with a radius of curvature of nearly 200 μm. It is then shown with 500 μm-diameter axicons that a quasi-Bessel beam is generated closely after the tip, and features a 5.3 μm diameter maintained over a propagation distance of almost 3.5 mm.

© 2021 Optica Publishing Group under the terms of the [Optica Publishing Group Publishing Agreement](#)

## 1. Introduction

Refractive axicons, first proposed in 1954 [1], are conical-shaped continuous profile transmissive components. They are known to produce quasi-Bessel beams (QBB) from an incident collimated beam (Fig. 1). Such beams are characterized by an electric-field profile following a Bessel function generated from the interference of all deviated beams and diffraction on the conical vertex. This shaping results in a long and narrow focal line along the optical axis ("diffraction-free beam"), rather than a point as in the case of convex lenses. Such non-diffracting unique property makes them useful in applications like alignment and metrology [2, 3], second harmonic generation [4], 2D micro-fabrication [5], waveguide writing [6], optical trapping [7, 8], or optical coherence tomography [9, 10] where the associated improved depth of field is an asset. To do so, the axicon deviates the incident collimated beam propagating along the z-axis with an angle  $\beta$  determined, in the paraxial approximation, by the opening angle (also called "base" or "wedge" angle)  $\alpha$  of the cone and the refractive index  $n$  of the employed material [11]:

$$\beta = (n - 1)\alpha. \quad (1)$$

If  $W_0$  is the beam-waist of the incident beam (Fig. 1), the length of the focal line,  $Z_{max}$ , can be approximated to:

$$Z_{max} = W_0/\tan \beta, \quad (2)$$

whereas the radius  $r_B$  of the central lobe (first zero) of the QBB is described by [12]:

$$r_B = 2.4048/(k \sin \beta), \quad (3)$$

$r_B$  can then be related to the full width at half maximum (FWHM) of the central lobe FWHM

$= 1.0532 \times r_B$ , which is easier to derive experimentally in the ranges where the QBB is not properly shaped.

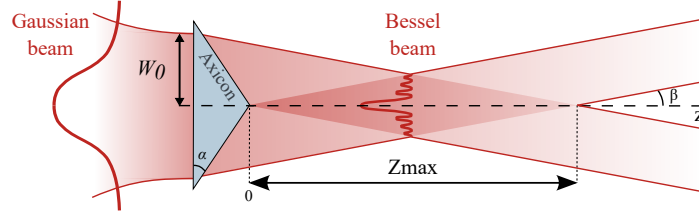


Fig. 1. Sketch of Bessel beam formation behind an axicon.

Refractive axicons are usually fabricated by diamond turning [13] or grinding and polishing [14] of glass or epoxy. In the case of micro-fabrication, most of the employed techniques lead to microstructures made of resist, whose shape can be generated by electron beam lithography [15,16], electric field shaping of SU8 droplets [17], interference lithography [18], or 2-photon laser writing [19]. Other means as direct-laser writing of UV-curable epoxy [20] or chemical etching (positive or negative) to produce axicons at the tip of optical fibers [21] have also been proposed. Diamond tools are also used to generate molds that are subsequently employed for replication [22]. Still, such approaches lead to components in polymer, which are not as robust as if they were made in glass. This can be critical for applications where high laser power has to be handled, e.g. for ablation (microcapillarities, etc.) [23], or when the components should be used in harsh conditions.

Previously, we developed a wafer-level technique based on glass-blowing from multiple silicon-glass cavities to generate micro-axicons [24]. Nevertheless, although the wafer-level character along with the high level of rotational symmetry are undeniable advantages, the technique intrinsically leads to blunt the tip with a radius of curvature reaching a few millimeters. Recently, axicons made of glass with shorter radii of curvature have been fabricated by femtosecond laser ablation followed by CO<sub>2</sub> laser polishing [25–28]. Despite the fact that it is a direct writing method, more adapted to prototyping than large-scale production, it leads to a more conical shape allowing the generation of Bessel beams closer from the tip. However, the significant roughness resulting from the laser ablation requires to perform a strong thermal surface polishing, eventually rounding the tip as well.

Here, the proposed LAE technique is, similarly to laser ablation, a direct writing method, but only for laser-exposing the component's surface so that it is subsequently primarily revealed by wet-etching, especially in potassium hydroxide (KOH) aqueous solution. The etch-rate of KOH, better known for anisotropic etching of silicon, rather than glass, is substantially increased for laser-exposed areas, allowing glass 3-D structuration. Proposed in the early 2000s, such a technique of femtosecond laser pre-irradiation was first employed to enhance etching based on aqueous solution of Hydrofluoric (HF) acid [29], but with a much lower selectivity than the one obtained further in KOH [30]. In addition, it has been more focused on microfluidics circuits generation [31–33] or microfluidics combined with waveguides for optical sensing [34,35], rather than on micro-optical component fabrication. Moreover, when it is employed for this purpose, it is often used to carve a basic geometry which is subsequently shaped by reflow, such as a cube toward a sphere [36] or a disk toward a toroid [37] to generate microresonators, or pillars reflowed in an array of microlenses [38]. Even when the primary shape of the lens is drawn from LAE, the final sought state, e.g. achieved by flame polishing [39–41], is close to the one minimizing the surface tensions and only slightly modified.

In the case of an axicon, featuring a much higher spatial frequency at its tip, the laser surface polishing should minimize surface re-shaping. In this framework, we consequently show that the

surface roughness resulting from LAE is lower than for laser ablation, and then requires lighter thermal surface polishing, eventually better preserving the profile singularities of the component such as the axicon tip. This feature is particularly interesting for micro-axicons since it favors the quasi-Bessel generation in its nearest neighborhood and gives it more potential to be used, e.g., in compact lab-on-chip devices.

## 2. Micro-axicon generation

### 2.1. Laser assisted etching

High-fidelity micro-axicons with 500  $\mu\text{m}$  diameter and apex angle of  $170^\circ$  ( $\alpha = 5^\circ$ ) are fabricated in fused silica through a LAE manufacturing process [29] whose direct laser writing step is achieved with a f100 aHead Enhanced system from FEMTOprint (Muzzano, Switzerland). The system consists of a horizontal XY-moving hollow stage holding the glass wafer to be irradiated. The stage stands above a  $20\times$  microscope objective, mounted on a vertical Z-translation stage and used to focus inside the glass bulk the beam emitted by a 1030 nm Yb:YAG femtosecond laser (spot size specified at 1.5  $\mu\text{m}$ ). The beam pulse energy is typically set to 230nJ and produced at a repetition rate of 1 MHz. The system enables to run programmed sequences synchronizing the laser spot XYZ-displacements with the laser output power (Fig. 2(a)). The LAE process relies on the structural modification of the glass material resulting from the intense irradiation undergone at the focal point of the femtosecond laser. Since the efficiency of the laser inscription is polarization-sensitive, at least in the femtosecond regime [42], the incident linear polarization is aligned perpendicularly to the writing direction [43], in order to optimize the material modification.

Here, we use 500  $\mu\text{m}$ -thick  $20\times 20$  mm polished fused-silica samples (Corning 7980), although the system can process wafers up to 1 mm-thick and 100 mm diameter. The 3D surface of the refractive micro-optical component is raster-drawn with 1  $\mu\text{m}$  line spacing along Y and located few tens of microns below the sample surface. Just before the component's surface, vertical accesses are first laser-exposed. They are aimed to provide evenly distributed access of the etching solution through the sacrificial volume to the 3D laser-exposed surface. By doing so, the sacrificial material does not require to be entirely laser-irradiated but is eventually detached during wet etching [44]. In addition, this scanning strategy prevents from excessive internal stress due to overexposure. The laser irradiation step requires typically 60 minutes for a 500  $\mu\text{m}$ -diameter component. This duration is not proportional to the volume but to the surface of the contour and then is little dependent on the superfluous material, unlike laser ablation for which it has to be entirely laser-treated.

The next step (Fig. 2(b)) consists in a liquid phase etching of the irradiated glass wafer. For this purpose, the glass wafer is immersed into a 10 mol/L KOH aqueous solution, maintained at a constant temperature of  $85^\circ\text{C}$  under sporadic ultrasonic agitation. It takes approximately 60min for the KOH solution to react and dissolve the considered areas, i.e. surface and accesses, of the laser-modified glass whatever their number on the wafer. Hence, this etching sub-step allows fast and uniform batch processing. Since these areas were defined as the lens outlines, their dissolution leads to the separation of the undesirable glass parts located above the axicon profile. The laser-modified areas can be etched nearly 900times faster than the unmodified glass [45], allowing them to be removed with a negligible alteration of the surrounding glass, hence resulting in good machining accuracy.

Nevertheless, the surface of the released micro-axicons shows right after etching a non-negligible roughness that avoids their qualification as optical components, at least for visible wavelengths. Therefore, an additional surface-polishing step is required.

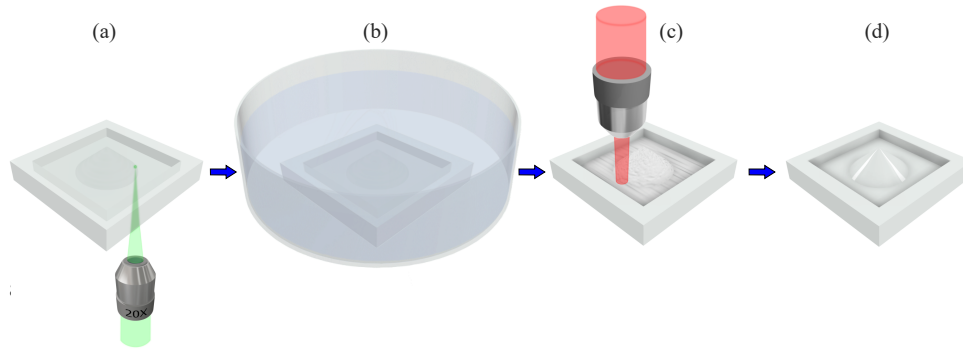


Fig. 2. Flowchart of the complete fabrication process of a single micro-axicon in a glass wafer : (a) the axicon outline areas to be subtracted are irradiated by scanning the femtosecond laser-focused spot inside the wafer bulk from its backside, along a defined path and starting from the top surface. Here, the irradiated glass is structurally modified and only the refractive index change is visible. (b) These outline areas are then etched in a 85 °C KOH solution leading to the release of the axicon shape. (c) This surface is then smoothed by raster scanning a 150  $\mu\text{m}$  diameter CO<sub>2</sub> laser spot, (d) the resulting axicon surface is optically polished.

## 2.2. CO<sub>2</sub> laser polishing

The last fabrication step (Fig. 2(c)) consists in polishing the component's surface through local heating by a CO<sub>2</sub> laser [46,47]. The Diamond C-30 laser (from Coherent, Santa Clara, CA, USA) emits an infrared beam focused and raster scanned on the surface of the component produced by LAE.

This scanning is done by moving the component with a motorized XY-stage. For each axicon, 13 scans are performed on the X and the Y directions at a speed of 2 mm/s with an overlap of 100  $\mu\text{m}$ . The laser power is set at 5.3W and the CO<sub>2</sub> laser energy is deposited on a circular Gaussian beam with a 230  $\mu\text{m}$  beam waist ( $1/e^2$  spot radius).

Since fused silica is highly absorbing at 10.6  $\mu\text{m}$ , the laser light is absorbed in the vicinity of the lens surface. Therefore, this absorption leads to a significant increase of the glass temperature, limited to a thin layer below the lens surface. As this thin layer temperature increases, its viscosity decreases and eventually reaches a level where the glass is soft enough for surface roughness relaxation effects to occur, which results in a smoothing effect. Indeed, multiple phenomena involving surface tension lead, at first, to the relaxation of high spatial frequencies corresponding to roughness. Since the glass heating is limited to the glass surface, the shape of the lens is rather well-preserved during this process.

## 3. Component's profile and surface characterization

The surfaces of the fabricated axicons were characterized by two different systems. First, an optical profilometer based on white light interferometry (MSA 500 from Polytec, Waldbronn, Germany) was employed to determine surface topography and roughness on a 886 x 662  $\mu\text{m}^2$  area. Second, a mechanical stylus profilometer (Dektak XT from Bruker) was used to measure the profiles of non-polished components, whose roughness is too large for optical profilometer to collect the signal from all the surface points.

Two batches of components have been fabricated, with a slightly different meshing of the laser-insulated paths. The first tested micro-axicon (MA1), from the first batch, is characterized by a coarser meshing than the second tested one (MA2), taken from the second batch. In addition,

those components are compared to a precision axicon (AX125 from Thorlabs) specified at a similar angle ( $\alpha = 5^\circ$ ) than the fabricated micro-axicons. The various acquired profiles are fitted with Eq. 4 [48] in order to derive average angles as well as radii of curvature of the axicon tips.

$$e(r) = e_0 - R_c \tan^2(\alpha) \sqrt{1 + \frac{r^2}{R_c^2 \tan^2(\alpha)}}. \quad (4)$$

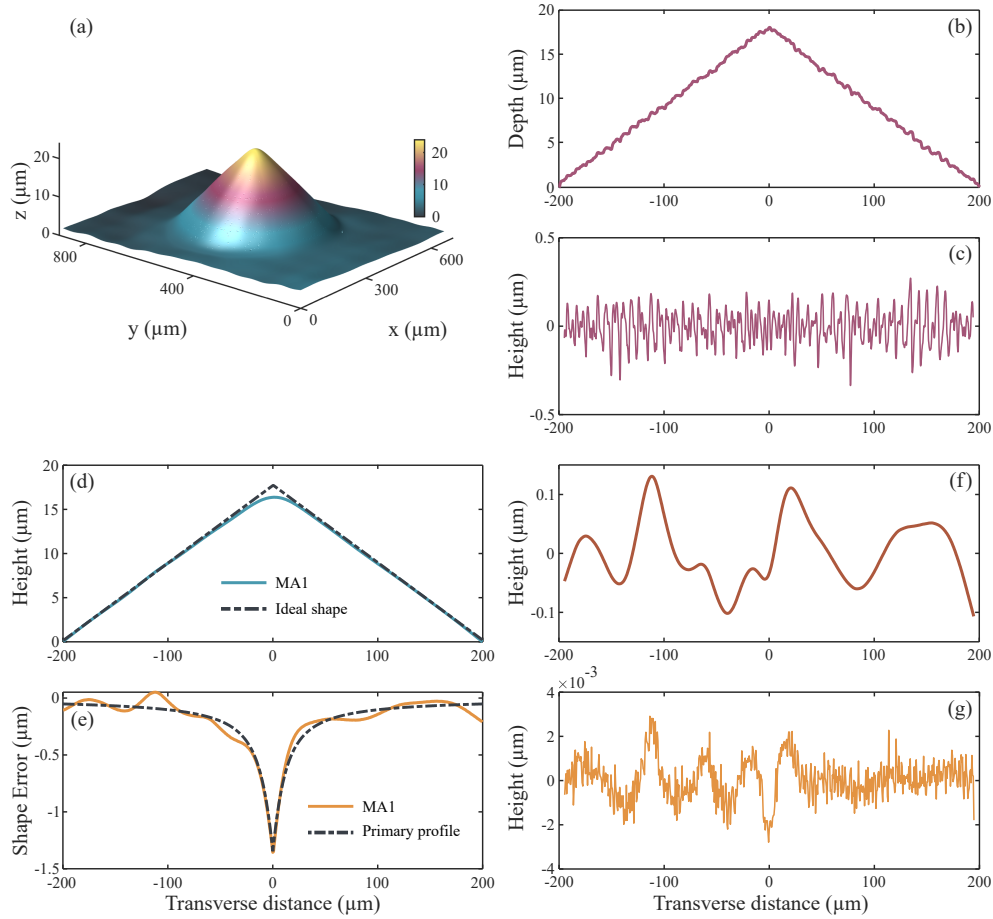


Fig. 3. Surface profile characterization of the 500  $\mu\text{m}$  - diameter MA1 : (a) 3-D surface topography, (b) Cross-section profile measured right after wet etching. The fitted profile features  $R_c = 28.2 \mu\text{m}$  and  $\alpha = 5.12^\circ$ . (c) Roughness profile from which RMS roughness is derived at the level of  $R_q = 94 \text{ nm}$ . (d) Cross-section profile after laser polishing compared to the ideal conical shape (dashed black line). The polished profile now features a more rounded tip with an associated  $R_c = 174 \mu\text{m}$ . (e) Resulting shape error derived from comparing the two curves of (d). The dashed black line shows the primary profile and allows deriving the RMS waviness in (f) which reaches  $W_q = 54 \text{ nm}$ . The roughness of the polished component, extracted by considering a cut-off length of  $10 \mu\text{m}$ , drops significantly. The former rough surface from (c) is now polished and shown in (g) with a 125x magnification of the ordinate (vertical scale). The calculated roughness is then equal to  $R_q = 0.9 \text{ nm}$ . Note that cross sections are mostly derived from white-light profilometry (MSA-500 from Polytec) whereas the rough profiles (b), (c) result from stylus profilometry (Bruker Dektak XT).

Figure 3(a) reports the topography of one of the 500  $\mu\text{m}$  diameter conical lenses, namely MA1, buried 63  $\mu\text{m}$  under the wafer surface and measured by white light interferometry. One of the cross-sections of MA1 is shown in Fig. 3(b) before the polishing step. This rough profile is acquired with the mechanical profilometer equipped with a 2  $\mu\text{m}$  probe. It remains close to the ideal conical shape, with an associated radius of curvature measured around 28  $\mu\text{m}$ . The initial roughness displayed on Fig. 3(c) is at the level of  $R_q = 94$  nm evaluated when applying a 10  $\mu\text{m}$  cut-off filter. It can be noted that the roughness observed before polishing varies according to the different axes passing through the axicon tip. Indeed, since the 3D surface of the axicon is generated by writing parallel lines with 1  $\mu\text{m}$  overlap, the KOH solution preferentially dissolves and diffuses along the writing lines rather than along the perpendicular direction, resulting in an anisotropic roughness pattern ( $R_q = 45$  nm RMS along the writing lines versus  $R_q = 90$  nm RMS perpendicularly to them).

The subsequent laser polishing tends to round the tip and thus increases the curvature as shown in Fig. 3(d) where one of MA1's cross-sectional profiles is displayed ( $R_c = 174$   $\mu\text{m}$ ). The tip rounding is highlighted as well when displaying the shape error (Fig. 3(e), resulting from subtraction between both curves of Fig. 3(d)). Here, it reaches almost 1.4  $\mu\text{m}$  for MA1. Nevertheless, this maximum profile deviation remains almost twice lower than the one measured on the AX125 axicon (3  $\mu\text{m}$  maximum shape error) and 2 to 4 times lower than the one reported in [28] measured on laser-ablated components (maximum shape deviation of 3 to 6  $\mu\text{m}$  and associated  $R_c = 600$   $\mu\text{m}$ ). This higher profile fidelity obtained for the fabricated axicons can be attributed to a lighter surface polishing and an associated higher cut-off of spatial frequencies due to lower initial roughness produced by the LAE process.

From the difference between the shape error profile and the primary profile (dashed black line derived from Eq. 4 with a radius set at  $R_c = 207$   $\mu\text{m}$ ), both displayed on Fig. 3(e), we can subsequently derive the waviness profile (Fig. 3(f)) along with the roughness profile (Fig. 3(g)). The waviness shown here is measured at  $W_q = 54$  nm. CO<sub>2</sub> laser processing leads to a significant decrease of the surface roughness, at the level of  $R_q = 0.9$  nm (Fig. 3(g)).

Table 1. Representative parameters of axicons' surfaces, derived from 8 radial cross-sections (each 22.5°) collected from surfaces measured with the optical profilometer. Given  $\alpha$ ,  $R_c$ ,  $W_q$  and  $R_q$  are mean values, averaged from the 8 considered cross-sections.

Element	$\alpha$ ( $SD^a$ ) (°)	Range (°)	$R_c$ ( $SD$ ) ( $\mu\text{m}$ )	Range ( $\mu\text{m}$ )	$W_q$ ( $SD$ ) (nm)	Range (nm)	$R_q$ ( $SD$ ) (nm)	Range (nm)
MA1	5.08 (0.07)	5.02 - 5.22	191 (37)	157 - 246	68 (13)	47 - 85	0.9 (0.1)	0.7 - 1
MA2	5.32 (0.10)	5.20 - 5.45	228 (19)	208 - 258	55 (9)	40 - 71	0.8 (0.2)	0.6 - 1.1
AX125	4.67 (0.01)	4.66 - 4.67	344 (2)	340 - 346	34 (7)	23 - 43	0.7 (0.1)	0.6 - 0.8

<sup>a</sup>  $SD$  stands for standard deviation

The profile parameters concerning the three considered components are gathered in Tab. 1. According to the reported values, MA2 appears to be more obtuse than MA1 (by  $\approx 0.25^\circ$ ) and differs stronger from the specified  $5^\circ$  than MA1. It is also slightly more asymmetric. Indeed, whereas MA1 wedge angle ranges from  $5.08^\circ$  (y-axis) to  $5.22^\circ$  (x-axis), it is spread between  $5.20^\circ$  (y-axis) to  $5.45^\circ$  (x-axis) in the case of MA2. This asymmetry is attributed to a higher applied irradiation dose, probably consecutive to the finer meshing, resulting also in uneven etch rate. The AX125 mean angle is measured similarly and appears to be more uniform at  $4.67^\circ$  (standard deviation ( $SD$ ) = 0.01), value from which a slightly smaller focusing power

can however be expected. Note that the angle of the AX125 is evaluated from topography measurements applied only on the 500  $\mu\text{m}$ -diameter disk centered on the tip, despite its 6.35 mm radius. This can explain the discrepancy with the specified angle of  $5^\circ$ .

As reported in Tab. 1, MA1 shows a higher fidelity around the tip ( $R_c^{\text{mean}} = 191 \mu\text{m}$ ) than MA2 ( $R_c^{\text{mean}} = 228 \mu\text{m}$ ) but with a larger  $SD$  (37  $\mu\text{m}$  against 19  $\mu\text{m}$ ) revealing a more asymmetrical tip. In addition, although MA1 appears to be more asymmetric than MA2 around the tip, it is the opposite concerning their lower part as underlined earlier. Such asymmetries are not experienced with commercial AX125 axicon fabricated by standard grinding and polishing, however, the latter leads to a larger radius of curvature ( $R_c^{\text{mean}} = 344 \mu\text{m}$ ).

The surface of the AX125 is also more stretched with nearly twice lower  $W_q^{\text{mean}} = 34 \text{ nm}$  than the one of MA1 ( $W_q^{\text{mean}} = 68 \text{ nm}$ ). In addition, the measured waviness is 25% larger for MA1 than for MA2, as it could be expected from the different meshing of exposed surfaces. Note that, as previously, the wavelength of the applied cut-off filter is set at 10  $\mu\text{m}$ . Finally, the measured surface roughness of the commercial AX125 ( $R_q^{\text{mean}} = 0.7 \text{ nm}$ ) is close to its specification given at 0.6 nm and on the same order as the mean surface roughness of MA1 and MA2 measured at 0.9 nm and 0.8 nm, respectively.

#### 4. Bessel beam generation

Such components are then employed to generate QBB. The resulting intensity distributions are studied with a 3D intensity point spread function (IPSF) measurement system [49] where each transverse plane is imaged onto a movable camera so that the whole distribution of the focal volume can be reconstructed. The axicons under test are illuminated with a He-Ne laser ( $\lambda = 632.8 \text{ nm}$ ), whose beam is collimated by a beam expander (at  $W_0 \approx 240 \mu\text{m}$ ), whereas the imaging part uses a 10x plan achromat microscope objective from Olympus ( $NA = 0.25$ ) associated with a tube lens of 150 mm focal length to ensure a magnification of 8.33. Consequently, each pixel of the CMOS camera ( $\mu\text{Eye UI-1545LE-M-GL}$  from IDS having  $1280 \times 1024$  pixels of 5.2  $\mu\text{m}$  size) corresponds to 0.62  $\mu\text{m}$  in the focal plane. Transverse planes are acquired every 25  $\mu\text{m}$  along the propagation direction thanks to a translation achieved by a servo motor (Ealing 37-1104).

Figure 4 displays transverse (XY intensity distributions – Fig. 4(a) (b) and (c)) and longitudinal (XZ intensity distributions – Fig. 4(d) (e) and (f)) sections of the recorded focal volumes. The origin of the longitudinal distance is set at the position of the axicon tip. The Bessel-like intensity distributions, characterized by a sharp and intense central peak surrounded by concentric and evenly separated rings (square of the zeroth-order Bessel function profile) in the transverse planes, and by a non-diffracting feature in the longitudinal plane, are visible confirming the generation of a QBB by the three considered components. The first transverse distributions (the three most to the left) of the beams are noteworthy since they display an earlier shaped QBB for the fabricated micro-axicons MA1 and MA2 than for the commercial AX125, as well as a smaller beam radius, also clearly visible on the longitudinal planes. It can moreover be noticed that such beam shaping is shorter than the one achieved by laser-ablated axicons for which it typically starts at  $z \approx 3 \text{ mm}$  [25, 28]. The beam central core early ellipticity of MA1 (Fig. 4(a):  $z = 0.5 \text{ mm}$ ,  $\epsilon = 1.66$ ) is attributed to the asymmetry of the component's surface profile around the tip reported in the previous section. On the other side, i.e. at  $z > 4 \text{ mm}$ , the beam shaped by MA1 (Fig. 4(a)) does not lose its symmetry as much as the one shaped by MA2 (Fig. 4(b)), for which asymmetrical side lobes materialize from  $z > 5 \text{ mm}$ , in good agreement with the earlier observations of an elliptical contour of the surface profile.

Nevertheless, as seen on the longitudinal (XZ plane) evolutions of beams shaped by MA1 and MA2 between  $z = 0.75 \text{ mm}$  and  $z = 4.75 \text{ mm}$  (Fig. 4(d) and (e)), the central peak remains stable without significant modulation. Note on these graphs that images are normalized (from transverse plane to plane) to better visualize the entire propagation, but the QBB quality can be better appreciated with the on-axis intensity distributions (Fig. 4(g)(h)(i)) where its early



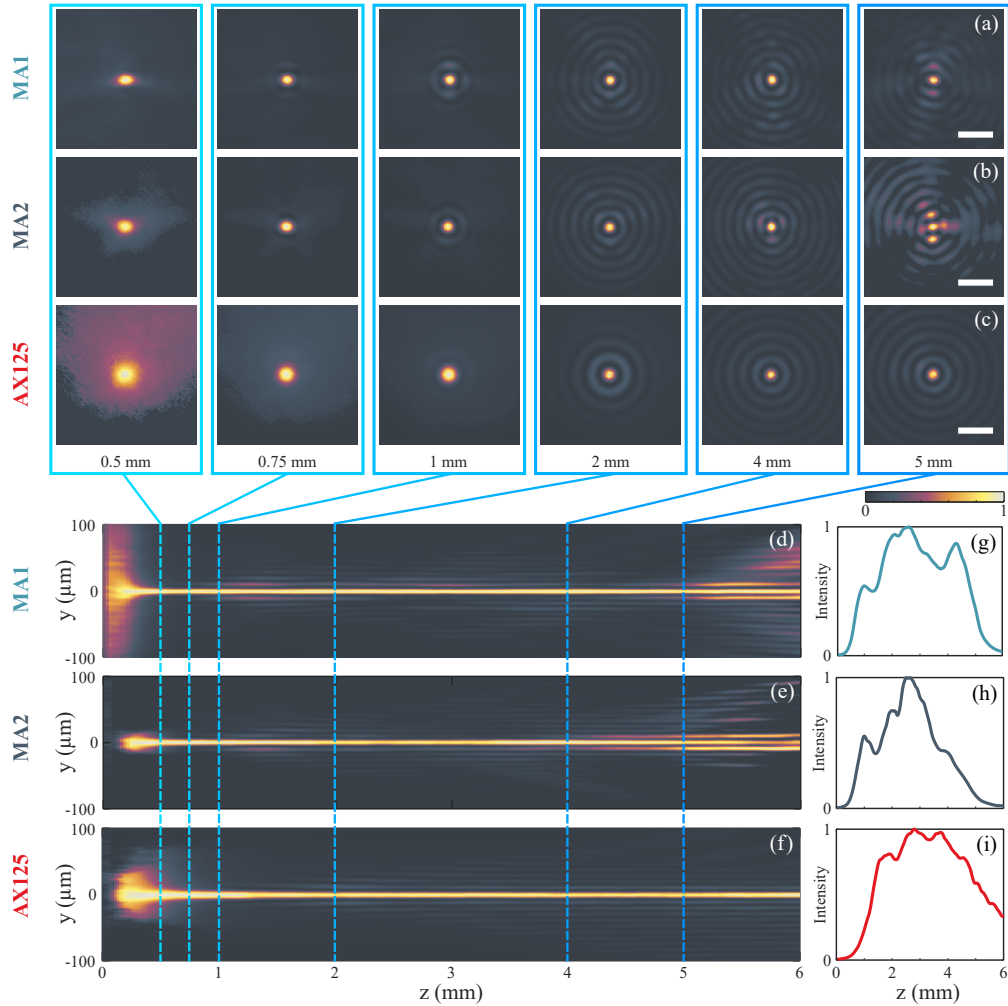


Fig. 4. Transverse intensity distributions recorded onto the camera at different picked longitudinal distances: Beam shaped by (a) MA1 (b) MA2 (c) commercial AX125 axicon. The white bar is 25  $\mu\text{m}$  long; Associated longitudinally normalized intensity distributions: (d) MA1 (e) MA2 (f) commercial AX125 axicon; On-axis intensity: (g) MA1 (h) MA2 (i) commercial AX125 axicon.

generation with respect to the beam shaped by the AX125 is also manifest.

According to Eq. 2, the length of the focal line is influenced by the axicon angle. Taking into account the average wedge angles reported in the Tab. 1,  $Z_{max}$  is equal to 5.92 mm, 5.66 mm and 6.44 mm for MA1, MA2 and the AX125, respectively. The higher angles of the fabricated axicons lead to shortening of their generated focal line length as it can be seen in Fig. 4(g) and (h) compared to Fig. 4(i). Additionally, the decline of the on-axis intensity for MA2 (Fig. 4(h)) is accentuated by the loss of symmetry at the component's contour.

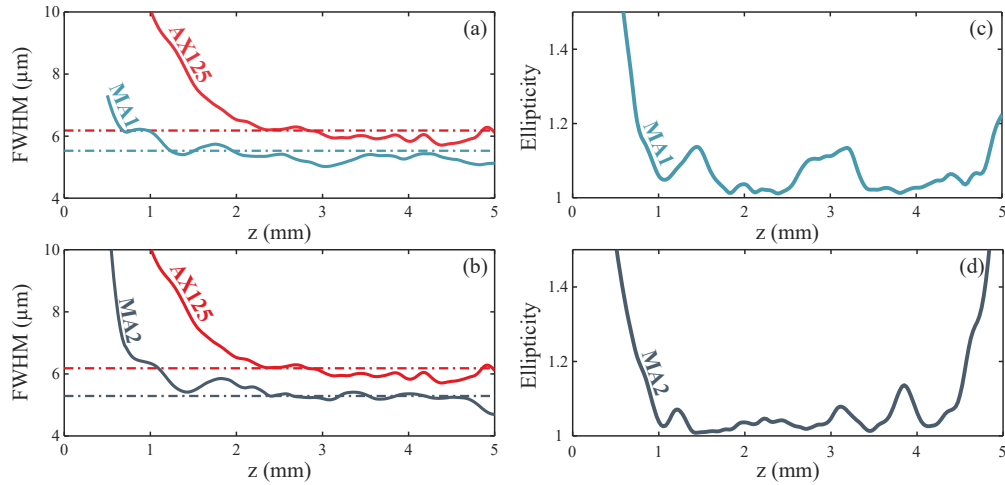


Fig. 5. (a)-(b) MA1 and MA2 beam central lobe's FWHM derived from experimental IPSPF volumes, each being compared to the beam FWHM obtained after the AX125. Dash-dotted lines display the corresponding expected FWHM calculated from approximated Eq. 3 of an equivalent ideal (conical) axicon; (c)-(d) Ellipticity of the beam central lobe as a function of the propagation distance for MA1 and MA2.

Finally, Fig. 5 displays other features of the shaped beams, in the form of the experimental central lobe's FWHM (Fig. 5(a)(b)) and ellipticity (Fig. 5(c)(d)) as a function of the longitudinal distance. As expected from Eq. 3, larger angles, such as for MA1 and especially MA2, lead to smaller central lobes. Indeed, whereas the beam generated by the AX125 is characterized by  $FWHM \approx 6 \mu\text{m}$ , the ones generated by MA1 and MA2 are closer to  $5 \mu\text{m}$ . Note that dash-dotted lines display the approximated FWHM of an ideal axicon, i.e. fully conical, evaluated according to Eq. 3 and to data from Tab. 1. These lines are plotted at  $FWHM = 6.2 \mu\text{m}$ ,  $5.5 \mu\text{m}$  and  $5.3 \mu\text{m}$  for AX125, MA1 and MA2, respectively. As already shown on the on-axis intensities on Figs. 4(g)-(h), the QBB is generated closer from the tip with MA1 and MA2, i.e. around  $z = 1 \text{ mm}$ , than with the AX125 for which the QBB appears right after  $z = 2 \text{ mm}$ . This feature, achieved thanks to the reduced radius of curvature of the tip, is particularly interesting for micro-axicons intended to be used within integrated optical microsystems.

From  $z = 1 \text{ mm}$  to  $z \approx 4.5 \text{ mm}$ , the ellipticity of the central lobes of MA1 and MA2 remains reasonable ( $1.00 < \epsilon < 1.15$ ) (Fig. 5(d)-(e)). Taking also into account the on-axis intensities and FWHM, this propagation range can be defined as the operational length of the generated QBB. It can be noticed that despite a slightly shorter length for the beam shaped by MA2 ( $z \approx 4.50 \text{ mm}$  instead of  $z \approx 4.75 \text{ mm}$ ), the ellipticity remains close to unity all along its working range. This behavior is in good agreement with the previous observations, such as a lower waviness and more symmetrical tip attributed to the finer meshing of the exposed surface of MA2. The latter is then capable of e.g. shaping closely from the axicon tip ( $z = 1 \text{ mm}$ ) until  $z = 4.5 \text{ mm}$ , a tiny visible QBB of  $FWHM = 5.3 \mu\text{m}$ , featuring an aspect ratio of 660.

## 5. Conclusion

This paper describes the use of LAE, a rapid prototyping method, for the fabrication of micro-optical components made of glass, and in particular micro-axicons employed for QBB generation in the visible range. It is shown that LAE, based on femtosecond laser pre-inscription of glass wafer, followed by wet KOH etching, allows building high fidelity refractive surfaces characterized by a reasonable roughness ( $R_q < 100$  nm). Hence, the required polishing step performed by heating the glass surface with a CO<sub>2</sub> laser faithfully preserves the designed shape of the component whereas decreasing the roughness until less than 1 nm RMS. Thereby, micro-axicons featuring tips with a low radius of curvature ( $R_c < 200$  μm) are fabricated, leading to the generation of QBB closely from the component's surface (1 mm). This is particularly interesting for micro-optical components embedded in microsystems that cannot tolerate delayed beam shaping. The QBB are then characterized by 5.3 μm diameter central core over an effective length of 3.5 mm.

## Funding

French National Research Agency (ANR) DOCT-VCSEL and μROCS projects (ANR-15-CE19-0012 and ANR-17-CE19-0005), INSERM Robot project (OPE-2017-0123), SMYLE Collegium.

## Acknowledgments

The authors thank the french RENATECH network and its FEMTO-ST technological facility, Luca Furfaro for fruitful discussions as well as Sarah Benchabane for discussions and careful reading of the manuscript.

## Disclosures

The authors declare no conflicts of interest.

## Data availability

Data underlying the results presented in this paper are not publicly available at this time but may be obtained from the authors upon reasonable request.

## References

1. J. H. McLeod, "The axicon: a new type of optical element," *JOSA* **44**, 592–597 (1954).
2. G. Häusler and W. Heckel, "Light sectioning with large depth and high resolution," *Appl. Opt.* **27**, 5165–5169 (1988).
3. J. A. Davis, E. Carcole, and D. M. Cottrell, "Range-finding by triangulation with nondiffracting beams," *Appl. Opt.* **35**, 2159–2161 (1996).
4. A. Piskarskas, V. Smilgevičius, A. Stabinis, V. Jarutis, V. Pašiškevičius, S. Wang, J. Tellefsen, and F. Laurell, "Noncollinear second-harmonic generation in periodically poled KTiOPO<sub>4</sub> excited by the Bessel beam," *Opt. Lett.* **24**, 1053–1055 (1999).
5. X.-F. Li, R. Winfield, S. O'Brien, and G. Crean, "Application of Bessel beams to 2D microfabrication," *Appl. Surf. Sci.* **255**, 5146–5149 (2009).
6. F. Xin, M. Flammini, F. Di Mei, L. Falsi, D. Pierangeli, A. J. Agranat, and E. DelRe, "Using Bessel beams to induce optical waveguides," *Phys. Rev. Appl.* **11**, 024011 (2019).
7. V. Garces-Chavez, D. McGloin, H. Melville, W. Sibbett, and K. Dholakia, "Simultaneous micromanipulation in multiple planes using a self-reconstructing light beam," *Nature* **419**, 145–147 (2002).
8. R. A. B. Suarez, L. A. Ambrosio, A. A. R. Neves, M. Zamboni-Rached, and M. R. R. Gesualdi, "Experimental optical trapping with frozen waves," *Opt. Lett.* **45**, 2514–2517 (2020).
9. K.-S. Lee and J. P. Rolland, "Bessel beam spectral-domain high-resolution optical coherence tomography with micro-optic axicon providing extended focusing range," *Opt. Lett.* **33**, 1696–1698 (2008).
10. D. Lorenser, C. C. Singe, A. Curatolo, and D. D. Sampson, "Energy-efficient low-fresnel-number Bessel beams and their application in optical coherence tomography," *Opt. Lett.* **39**, 548–551 (2014).
11. D. McGloin and K. Dholakia, "Bessel beams: diffraction in a new light," *Contemp. Phys.* **46**, 15–28 (2005).
12. O. Brzobohatý, T. Čížmár, and P. Zemánek, "High quality quasi-Bessel beam generated by round-tip axicon," *Opt. Express* **16**, 12688–12700 (2008).

13. M. Bass, *Handbook of Optics, 3rd Ed.*, vol. 1 (McGraw-Hill, 2009). Chap. 22.
14. A. Van LE and N. J. Richardi (2012). US Patent 9821522B2.
15. W. C. Cheong, B. P. S. Ahluwalia, X.-C. Yuan, L.-S. Zhang, H. Wang, H. B. Niu, and X. Peng, "Fabrication of efficient microaxicon by direct electron-beam lithography for long nondiffracting distance of bessel beams for optical manipulation," *Appl. Phys. Lett.* **87**, 024104 (2005).
16. B. P. S. Ahluwalia, W. C. Cheong, X.-C. Yuan, L.-S. Zhang, S.-H. Tao, J. Bu, and H. Wang, "Design and fabrication of a double-axicon for generation of tailorable self-imaged three-dimensional intensity voids," *Opt. Lett.* **31**, 987–989 (2006).
17. Z. Cao, K. Wang, S. Wu, and Q. Wu, "Fabrication of refractive axicons utilizing electrostatic force," *Optik* **124**, 3761–3763 (2013).
18. E. Stankevičius, M. Garliauskas, M. Gedvilas, and G. Račiukaitis, "Bessel-like beam array formation by periodical arrangement of the polymeric round-tip microstructures," *Opt. Express* **23**, 28557–28566 (2015).
19. M. Schmid, S. Thiele, A. Herkommer, and H. Giessen, "Three-dimensional direct laser written achromatic axicons and multi-component microlenses," *Opt. Lett.* **43**, 5837–5840 (2018).
20. H. Huang, S. Chen, H. Zou, Q. Li, J. Fu, F. Lin, and X. Wu, "Fabrication of micro-axicons using direct-laser writing," *Opt. Express* **22**, 11035–11042 (2014).
21. G. M. Philip and N. K. Viswanathan, "Fabrication of negative micro axicons in optical fibers via chemical etching," in *Proceedings of Int. Conf. Opt. Photon. (ICOP)*, (Chandigarh, India, 2009), paper D2.3.
22. N. Weber, D. Spether, A. Seifert, and H. Zappe, "Highly compact imaging using bessel beams generated by ultraminiaturized multi-micro-axicon systems," *J. Opt. Soc. Am. A* **29**, 808–816 (2012).
23. J. Dudutis, P. Gečys, and G. Račiukaitis, "Non-ideal axicon-generated bessel beam application for intra-volume glass modification," *Opt. Express* **24**, 28433–28443 (2016).
24. J. V. Carrión, J. Albero, M. Baranski, C. Gorecki, and N. Passilly, "Microfabrication of axicons by glass blowing at a wafer-level," *Opt. Lett.* **44**, 3282–3285 (2019).
25. S. Schwarz, S. Rung, C. Esen, and R. Hellmann, "Fabrication of a high-quality axicon by femtosecond laser ablation and CO<sub>2</sub> laser polishing for quasi-bessel beam generation," *Opt. Express* **26**, 23287–23294 (2018).
26. S. Schwarz, G.-L. Roth, S. Rung, C. Esen, and R. Hellmann, "Fabrication and evaluation of negative axicons for ultrashort pulsed laser applications," *Opt. Express* **28**, 26207–26217 (2020).
27. S. Schwarz, S. Rung, C. Esen, and R. Hellmann, "Rapid fabrication of precise glass axicon arrays by an all laser-based manufacturing technology," *J. Laser Appl.* **32**, 012001 (2020).
28. J. Dudutis, J. Pipiras, S. Schwarz, S. Rung, R. Hellmann, G. Račiukaitis, and P. Gečys, "Laser-fabricated axicons challenging the conventional optics in glass processing applications," *Opt. Express* **28**, 5715–5730 (2020).
29. A. Marcinkevičius, S. Juodkazis, M. Watanabe, M. Miwa, S. Matsuo, H. Misawa, and J. Nishii, "Femtosecond laser-assisted three-dimensional microfabrication in silica," *Opt. Lett.* **26**, 277–279 (2001).
30. S. Matsuo, H. Sumi, S. Kiyama, T. Tomita, and S. Hashimoto, "Femtosecond laser-assisted etching of pyrex glass with aqueous solution of KOH," *Appl. Surf. Sci.* **255**, 9758–9760 (2009).
31. Y. Bellouard, A. Said, M. Dugan, and P. Bado, "Fabrication of high-aspect ratio, micro-fluidic channels and tunnels using femtosecond laser pulses and chemical etching," *Opt. Express* **12**, 2120–2129 (2004).
32. F. Sima, K. Sugioka, R. M. Vázquez, R. Osellame, L. Kelemen, and P. Ormos, "Three-dimensional femtosecond laser processing for lab-on-a-chip applications," *Nanophotonics* **7**, 613–634 (2018).
33. H. Liu, W. Lin, and M. Hong, "Hybrid laser precision engineering of transparent hard materials: challenges, solutions and applications," *Light. Sci. Appl.* **10**, 162 (2021).
34. R. Osellame, V. Maselli, R. M. Vazquez, R. Ramponi, and G. Cerullo, "Integration of optical waveguides and microfluidic channels both fabricated by femtosecond laser irradiation," *Appl. Phys. Lett.* **90**, 231118 (2007).
35. N. Bellini, K. C. Vishnubhatla, F. Bragheri, L. Ferrara, P. Minzioni, R. Ramponi, I. Cristiani, and R. Osellame, "Femtosecond laser fabricated monolithic chip for optical trapping and stretching of single cells," *Opt. Express* **18**, 4679–4688 (2010).
36. J. Drs, T. Kishi, and Y. Bellouard, "Laser-assisted morphing of complex three dimensional objects," *Opt. Express* **23**, 17355–17366 (2015).
37. J. Lin, S. Yu, Y. Ma, W. Fang, F. He, L. Qiao, L. Tong, Y. Cheng, and Z. Xu, "On-chip three-dimensional high-Q microcavities fabricated by femtosecond laser direct writing," *Opt. Express* **20**, 10212–10217 (2012).
38. S. Yang, K. Peng, X. Cao, W. Wang, Y. Chen, Y. Li, J. Zhao, and B. Li, "CO<sub>2</sub> laser thermal reflow shaped convex glass microlens array after bessel picosecond laser inscribing and hydrofluoric acid processing," *Appl. Opt.* **59**, 1099–1104 (2020).
39. L. Qiao, F. He, C. Wang, Y. Liao, Y. Cheng, K. Sugioka, K. Midorikawa, C. Pan, and X. Wei, "Fabrication of a micro-optical lens using femtosecond laser 3D micromachining for two-photon imaging of bio-tissues," *Opt. Commun.* **284**, 2988–2991 (2011).
40. C. Ross, D. G. MacLachlan, D. Choudhury, and R. R. Thomson, "Towards optical quality micro-optic fabrication by direct laser writing and chemical etching," in *Frontiers in Ultrafast Optics: Biomedical, Scientific, and Industrial Applications XVII*, vol. 10094 A. Heisterkamp, P. R. Herman, M. Meunier, and R. Osellame, eds., International Society for Optics and Photonics (SPIE, 2017), pp. 101 – 115.
41. C. A. Ross, D. G. MacLachlan, B. J. E. Smith, R. J. Beck, J. D. Shephard, N. Weston, and R. R. Thomson, "A miniature fibre-optic raman probe fabricated by ultrafast laser-assisted etching," *Micromachines* **11**, 185 (2020).

42. X. Li, J. Xu, Z. Lin, J. Qi, P. Wang, W. Chu, Z. Fang, Z. Wang, Z. Chai, and Y. Cheng, "Polarization-insensitive space-selective etching in fused silica induced by picosecond laser irradiation," *Appl. Surf. Sci.* **485**, 188–193 (2019).
43. C. Hnatovsky, R. S. Taylor, E. Simova, V. R. Bhardwaj, D. M. Rayner, and P. B. Corkum, "Polarization-selective etching in femtosecond laser-assisted microfluidic channel fabrication in fused silica," *Opt. Lett.* **30**, 1867–1869 (2005).
44. A. Butkutė, T. Baravykas, J. Stančikas, T. Tičkūnas, R. Vargalis, D. Paipulas, V. Sirutkaitis, and L. Jonušauskas, "Optimization of selective laser etching (SLE) for glass micromechanical structure fabrication," *Opt. Express* **29**, 23487–23499 (2021).
45. C. A. Ross, D. G. MacLachlan, D. Choudhury, and R. R. Thomson, "Optimisation of ultrafast laser assisted etching in fused silica," *Opt. Express* **26**, 24343–24356 (2018).
46. K. M. Nowak, H. J. Baker, and D. R. Hall, "Efficient laser polishing of silica micro-optic components," *Appl. Opt.* **45**, 162–171 (2006).
47. Z. Cao, C. Wei, X. Cheng, Y. Zhao, X. Peng, Z. Jiang, and J. Shao, "Ground fused silica processed by combined chemical etching and CO<sub>2</sub> laser polishing with super-smooth surface and high damage resistance," *Opt. Lett.* **45**, 6014–6017 (2020).
48. B. Dépret, P. Verkerk, and D. Hennequin, "Characterization and modelling of the hollow beam produced by a real conical lens," *Opt. Commun.* **211**, 31–38 (2002).
49. M. Baranski, S. Perrin, N. Passilly, L. Froehly, J. Albero, S. Bargiel, and C. Gorecki, "A simple method for quality evaluation of micro-optical components based on 3D IPSF measurement," *Opt. Express* **22**, 13202–13212 (2014).