



Nanoplasmonic for probing gas/particle interactions

Benjamin Demirdjian, Igor Ozerov, F. Bedu, Alain Ranguis, Claude R Henry

► To cite this version:

Benjamin Demirdjian, Igor Ozerov, F. Bedu, Alain Ranguis, Claude R Henry. Nanoplasmonic for probing gas/particle interactions. Les journées scientifiques communes des GDR Plasmonique active et GDR Photo Electro Stimulation, Jun 2022, Le Mans, France. hal-03690393

HAL Id: hal-03690393

<https://hal.science/hal-03690393>

Submitted on 8 Jun 2022

HAL is a multi-disciplinary open access archive for the deposit and dissemination of scientific research documents, whether they are published or not. The documents may come from teaching and research institutions in France or abroad, or from public or private research centers.

L'archive ouverte pluridisciplinaire **HAL**, est destinée au dépôt et à la diffusion de documents scientifiques de niveau recherche, publiés ou non, émanant des établissements d'enseignement et de recherche français ou étrangers, des laboratoires publics ou privés.

Nanoplasmonic sensing for probing gas/particle interactions

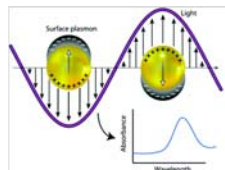
B. Demirdjian, I. Ozerov, F. Bedu, A. Ranguis, C. R. Henry

Aix-Marseille University, CNRS, CINaM UMR 7325, 13288 Marseille, France

NANOSENSORS BASED ON LSPR

Extraordinary optical properties of noble-metal nanoparticles :

→ development of (chemical, biological, ...) sensitive nanosensors



Localized surface plasmon resonance (LSPR) extinction peak : collective oscillation of electrons of an illuminated metal nanoparticle (NP)

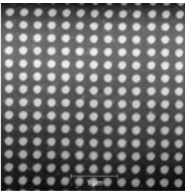
The minimum of reflected light corresponds to a maximum of absorbance

Analyst, 2020, 145, 3776-3800

OPTIMISATION OF GOLD NANODISKS PARAMETERS

FDTD Simulations
→ parameters (p, h, d) giving the best theoretical S/N

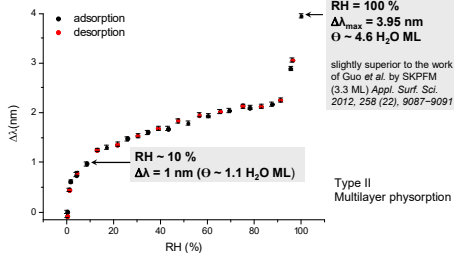
$\langle p \rangle = 300$ nm
 $\langle h \rangle = 25$ nm
 $d = 150$ nm



Tapping mode topographical AFM image of Au nanodisks on borosilicate glass (covered by a SiO2 layer)
PSIA apparatus (XE-100)

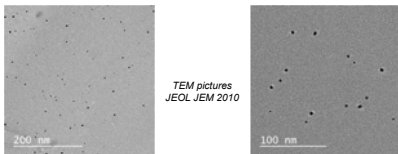
DNPS: WATER ADSORPTION ISOTHERM ON BARE GOLD NANODISKS

Langmuir 34 (2018) 5381-5385



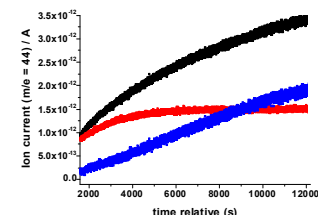
High sensitivity: error bars on $\Delta\lambda \sim 0.04$ nm $\sim 4/100$ H₂O ML ! (equation (1))
Reversibility: no chemisorption of water on gold (good agreement with Heras et al., Z. Phys. Chem. 129, 11-20 1982)

PT NPS FABRICATION AND TEM OBSERVATIONS (A. ALTIE, D. CHAUDANSON)



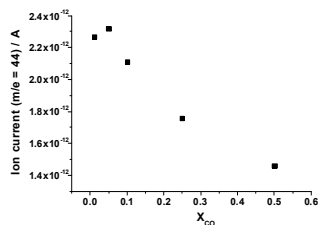
- Chemical synthesis (plasmonic sample immersed in Pt(acac)₃ + chloroform)
- Reduction (CO, H₂) + heating treatment (200 °C) → transfer HV reactor
- Pt NPs cubic shape
• $d = 3.0 \pm 1$ nm
• $\theta_s = n_s d^2 = 0.52$ % (very low !)

QMS TO FOLLOW CO OXIDATION AND FOR QUANTITATIVE MEASUREMENTS



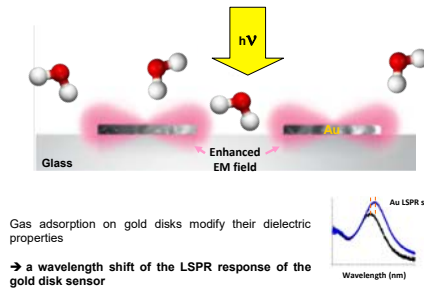
• QMS → monitoring the CO₂ production during CO oxidation on Pt NPs
($T = 443$ K, $X_{CO} = P_{CO} / (P_{CO} + P_{CO_2}) = 0.25$)

• CO₂ production by the plasmonic sample itself (blue) since the contribution from the bare HV reactor (red) has been subtracted.



→ the maximum of the steady state CO₂ production is obtained for $X_{CO} = 0.05$ in agreement with the work of Langhammer et al. (ACS Nano 2019, 13, 6090-6100) on large (70 nm) single Pt particles at 473 K

DIRECT NANOPLASMONIC SENSING (DNPS)



→ a wavelength shift of the LSPR response of the gold disk sensor

GOLD NANODISKS FABRICATION: EBL PROCESS (PLANETE)

Sample holder = borosilicate glass window, $e = 1$ mm, $\Phi = 25$ mm
Cleaning: acetone + US, then isopropanol + US, EDI rinsing, oxygen plasma oven at 150 °C (300 W during 10 min)

PMMA spin-coating (resin 950 K at 4 %, speed : 4000 rpm, $e = 270$ nm annealing 10 min at 170 °C)

Gold layer deposition (5 nm) to remove the charges (Edwards 306)

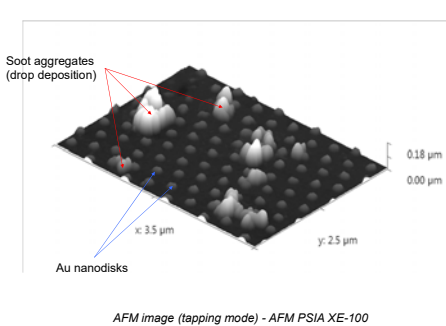
The gold film is irradiated with an electron beam (Raith PIONEER)
Area of 1×1 mm²

Revelation in acetone (Au is removed) then with MIBK/IPA 1 : 3 during 45 s
Then with IPA during 45 s (→ holes in the resin)

Cr and Au evaporation within the PMMA resin (Edwards 306)
 $e_{Cr} = 2$ nm, $e_{Au} = 20$ nm
Lift-off of the resin (acetone + US)

→ Precise control of the shape, the size and the pitch of gold nanodisks

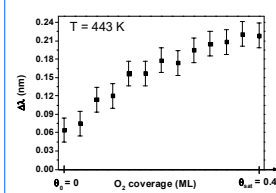
SOOT DEPOSITION ON GOLD NANODISKS: DROPLET DEPOSITION



AFM image (tapping mode) - AFM PSIA XE-100

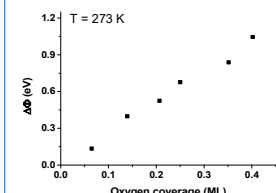
INPS: OXYGEN AND CO ADSORPTION : ANALOGY $\Delta\lambda/\Delta\Phi$

ACS Omega 6 (2021) 13398-13405



Our INPS measurements:
 $\Delta\lambda > 0$ and increases with oxygen coverage

Error bars = lower limit of detection = 0.04 ML !!!

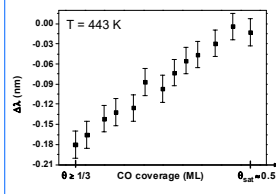


Literature → work function measurements on polycrystalline Pt*

$\Delta\Phi > 0$ and increases with oxygen coverage

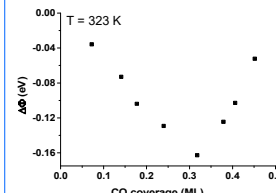
→ oxygen is irreversibly adsorbed on Pt NPs until the saturation coverage $\Theta \sim 0.4$ ML

*Norton, Surf. Sci. 1975, 47, 98-114



Our INPS measurements :
 $\Delta\lambda < 0$ and increases when $0.3 < \Theta < 0.5$ ML

Error bars = lower limit of detection = 0.04 ML !!!



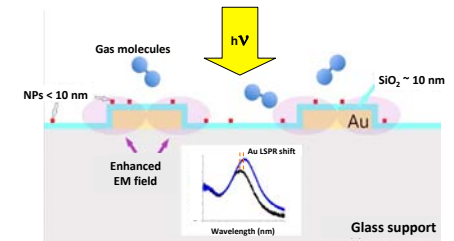
Literature → work function measurements on Pt(111)* :

$\Delta\Phi < 0$ and increases when $0.3 < \Theta < 0.5$ ML

→ CO is reversibly adsorbed on Pt NPs until the saturation coverage $\Theta \sim 0.5$ ML

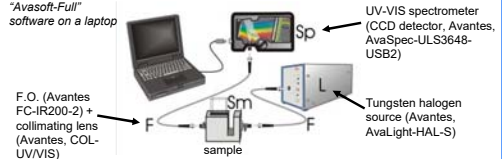
*Ertl et al. Surf. Sci. 1977, 64, 393-410

INDIRECT NANOPLASMONIC SENSING (INPS)



NPs react with gas molecules → modification of the dielectric properties at the NP surface
→ LSPR shift of the underlying Au detector.

LSPR MEASUREMENTS: EXPERIMENTAL SET-UP



RESPONSE OF THE LSPR NANOSENSORS

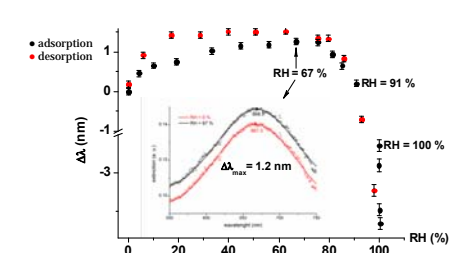
The response of LSPR nanosensors follows a simple model described by the group of Campbell (Langmuir 1998, 14, 5636-5648)

$$\Delta\lambda = m (n_2 - n_1) [1 - \exp(-2d/l_0)] \quad (1)$$

$\Delta\lambda$: wavelength shift
 m : sensitivity of the refractive index (RI)
 n_2 and n_1 : RI of different surrounding media
 d : effective thickness of the adsorbate layer
 l_0 : characteristic decay length of the evanescent electromagnetic field.

INPS: WATER ADSORPTION ON HYDROPHILIC SOOT PARTICLES

The Journal of Physical Chemistry Letters 6 (2015) 4148-4152

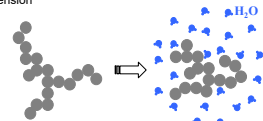


• Highly sensitive sensor → detection of about 2/100 of a water ML !
• At RH > 70 % → peculiar blue shift ! ($\Delta\lambda_{min} = -3.7$ nm)
• Desorption: small hysteresis → porosity

BLUE SHIFT ? → MODELLISATION (A. KARAPETYAN)

RH → hydrophilic soot aggregates collapse into + dense structures (Mikhailov et al., J. Geophys. Res. 2006, 111, D07209)

→ RH = 100 % soot aggregates are more compact:
• higher mass fractal dimension
• smaller gyration radius
• higher n and k values



Simulations: analytical Born and Wolf equations → absorbance of the thin multilayers system C/SiO₂/gold/glass

With a thinner C layer (-10 nm) and a higher n value (+0.1):
→ $\Delta\lambda = -4$ nm (- exp. value)

CONCLUSIONS AND OUTLOOKS

Nanoplasmonic sensing :

Quantitative + very sensitive probe: a few hundredths of a ML of adsorbed gas !

Large (P, T) domains for adsorption, reactivity, catalysis ...

Non destructive probe (compare to other probes)

Outlooks :

Enhanced the detector EM field (morphology, coupling ...)

Increase the density of NP's for INPS (e-beam UHV evaporation)

Theoretical investigation of analogy $\Delta\lambda/\Delta\Phi$ (shown for the 1st time)

