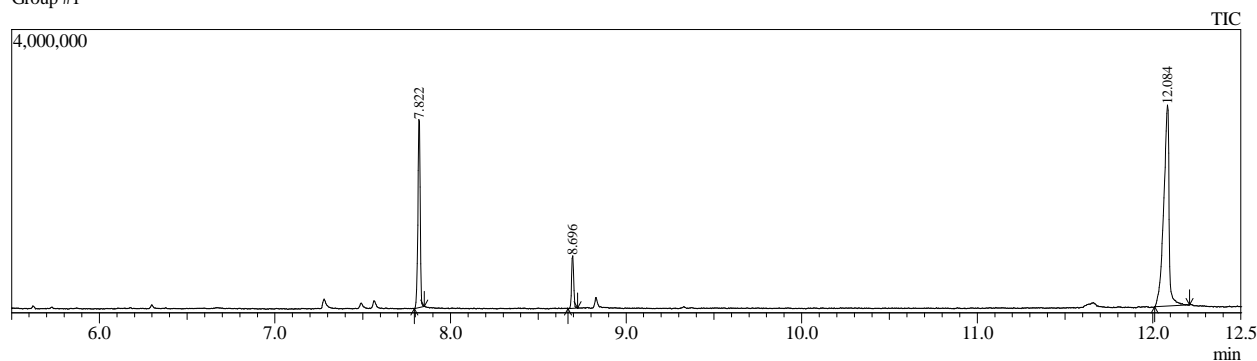


Sample Information

Sample Name : SLE048-1h30-concentrated
Vial # : 18
Injection Volume : 1.00
Data File : C:\GCMSsolution\Data\Project1\AM2N3\Sébastien Lemouzy\SLE048-1h30-concentrated
Method File : C:\GCMSsolution\Data\Project1\AM2N3\Sébastien Lemouzy\50-280 (split 10) début
Tuning File : C:\GCMSsolution\System\Tune1\2021.01.04.qgt

Chromatogram SLE048-1h30-concentrated C:\GCMSsolution\Data\Project1\AM2N3\Sébastien Lemouzy\SLE048-1h30-concentrated-t.qgd

Group #1



Peak Report							Name
Peak#	R.Time	I.Time	F.Time	Area	Area%	Height	
1	7.822	7.793	7.850	2407386	26.43	2674673	
2	8.696	8.670	8.723	605548	6.65	744788	
3	12.084	12.010	12.210	6096983	66.93	2859849	
				9109917	100.00	6279310	

Spectrum

Method

[Comment]

===== Analytical Line 1 =====

[AOC-20i+s]

of Rinses with Presolvent :6
of Rinses with Solvent(post) :6
of Rinses with Sample :2
Plunger Speed(Suction) :High
Viscosity Comp. Time :0.2 sec
Plunger Speed(Injection) :High
Syringe Insertion Speed :High
Injection Mode :Normal
Pumping Times :5
Inj. Port Dwell Time :0.0 sec
Terminal Air Gap :No
Plunger Washing Speed :High
Washing Volume :8uL
Syringe Suction Position :0.0 mm
Syringe Injection Position :0.0 mm
Solvent Selection :All A,B,C

[GC-2010]

Column Oven Temp. :50.0 °C
Injection Temp. :250.00 °C
Injection Mode :Split
Flow Control Mode :Linear Velocity
Pressure :108.3 kPa
Total Flow :11.1 mL/min

Column Flow	:0.74 mL/min	
Linear Velocity	:38.2 cm/sec	
Purge Flow	:3.0 mL/min	
Split Ratio	:10.0	
High Pressure Injection	:OFF	
Carrier Gas Saver	:ON	
Carrier Gas Saver Split Ratio	:10.0	
Carrier Gas Saver Time	:1.00 min	
Splitter Hold	:OFF	
Oven Temp. Program		
Rate	Temperature(°C)	Hold Time(min)
-	50.0	2.00
22.00	280.0	2.00

< Ready Check Heat Unit >
 Column Oven : Yes
 SPL1 : Yes
 MS : Yes
 < Ready Check Detector(FTD) >
 < Ready Check Baseline Drift >
 < Ready Check Injection Flow >
 SPL1 Carrier : Yes
 SPL1 Purge : Yes
 < Ready Check APC Flow >
 < Ready Check Detector APC Flow >
 External Wait :No
 Equilibrium Time :1.0 min

[GC Program]

[GCMS-QP2010 SE]
 IonSourceTemp :200.00 °C
 Interface Temp. :280.00 °C
 Solvent Cut Time :1.50 min
 Detector Gain Mode :Relative
 Detector Gain :0.89 kV +0.00 kV
 Threshold :0

[MS Table]

--Group 1 - Event 1--
 Start Time :5.30min
 End Time :14.45min
 ACQ Mode :Scan
 Event Time :0.20sec
 Scan Speed :5000
 Start m/z :30.00
 End m/z :800.00

Sample Inlet Unit :GC

[MS Program]

Use MS Program :OFF

Library

No peaks found