



**HAL**  
open science

## The evolution of agro-urbanism: A case study from Angkor, Cambodia

Alison Carter, Sarah Klassen, Miriam Stark, Martin Polkinghorne, Piphall Heng, Rachna Chhay, Damian Evans

► **To cite this version:**

Alison Carter, Sarah Klassen, Miriam Stark, Martin Polkinghorne, Piphall Heng, et al.. The evolution of agro-urbanism: A case study from Angkor, Cambodia. *Journal of Anthropological Archaeology*, 2021, 63, pp.101323. 10.1016/j.jaa.2021.101323 . hal-03686514

**HAL Id: hal-03686514**

**<https://hal.science/hal-03686514>**

Submitted on 2 Jun 2022

**HAL** is a multi-disciplinary open access archive for the deposit and dissemination of scientific research documents, whether they are published or not. The documents may come from teaching and research institutions in France or abroad, or from public or private research centers.

L'archive ouverte pluridisciplinaire **HAL**, est destinée au dépôt et à la diffusion de documents scientifiques de niveau recherche, publiés ou non, émanant des établissements d'enseignement et de recherche français ou étrangers, des laboratoires publics ou privés.

## **Accepted Manuscript**

Carter, Alison Kyra, Sarah Klassen, Miriam T. Stark, Martin Polkinghorne, Piphai Heng, Damian Evans, and Rachna Chhay. "The evolution of agro-urbanism: A case study from Angkor, Cambodia." *Journal of Anthropological Archaeology* 63 (2021): 101323.

## **Published Article**

<https://www.sciencedirect.com/science/article/pii/S0278416521000568>

# The evolution of agro-urbanism: A case study from Angkor, Cambodia

Alison Kyra Carter <sup>a,\*</sup>, Sarah Klassen <sup>b,h</sup>, Miriam T. Stark <sup>c</sup>, Martin Polkinghorne <sup>d</sup>, Piphah Heng <sup>e</sup>,  
Damian Evans <sup>f</sup>, Rachna Chhay <sup>g</sup>

<sup>a</sup> Department of Anthropology, University of Oregon, 308 Condon Hall, 1321 Kincaid Street, Eugene, OR, 97403, United States

<sup>b</sup> Department of Anthropology, University of British Columbia, 2104 – 6303 NW Marine Drive, Vancouver, BC V6T 1Z1, Canada

<sup>c</sup> Department of Anthropology, University of Hawai'i at Mānoa, 2424 Maile Way, Saunders Hall 346, Honolulu, HI 96822, United States

<sup>d</sup> Archaeology, Flinders University, College of Humanities, Arts and Social Sciences, Level 2, College Front, Humanities Building, Bedford Park, South Australia, Australia

<sup>e</sup> Center for Southeast Asian Studies/Department of Anthropology, Stevens Building, DeKalb, IL 60115, United States

<sup>f</sup> Ecole française d'Extrême-Orient, 22 Avenue du Président Wilson, 75116 Paris, France

<sup>g</sup> Angkor International Centre of Research and Documentation, APSARA National Authority, Siem Reap, Cambodia

<sup>h</sup> Department of Archaeological Sciences of the Faculty of Archaeology, Leiden University, Rapenburg 70, 2311 EZ Leiden, Netherlands

\* Corresponding author

## Keywords

Urbanism, Agro-urbanism, Demography, Cambodia, Angkor, Southeast Asia

## Abstract

The vast agro-urban settlements that developed in the humid tropics of Mesoamerica and Asia contained both elite civic-ceremonial spaces and sprawling metropolitan areas. Recent studies have suggested that both local autonomy and elite policies facilitated the development of these settlements; however, studies have been limited by a lack of detail in considering how, when, and why these factors contributed to the evolution of these sites. In this paper, we use a fine-grained diachronic analysis of Angkor's landscape to identify both the state-level policies and infrastructure and bottom-up organization that spurred the growth of Angkor as the world's most extensive pre-industrial settlement complex. This degree of diachronic detail is unique for the ancient world. We observe that Angkor's low-density metropolitan area and higher-density civic-ceremonial center

grew at different rates and independently of one another. While local historical factors contributed to these developments, we argue that future comparative studies might identify similar patterns.

## **1. Introduction**

In recent years, comparative archaeological studies of urbanism have increasingly focused on agro-urban centers, which are sometimes called distributed urban network systems or garden cities (e.g., Chase and Chase, 2016; Fisher, 2014; Fletcher, 2009, 2012; Graham, 1996; Graham and Isendahl, 2018; Isendahl, 2012; Lucero et al., 2015; Scarborough and Isendahl, 2020). This type of low-density urbanism is not uncommon in the archaeological record of the tropical world, and is categorically different from the compact, high-density cities of Mesopotamia and other classical civilizations that have provided the archetypes for understanding urbanism (e.g., Coningham et al., 2007; Isendahl and Smith, 2013; Kusimba et al., 2006). Agro-urban spaces have relatively low population densities in the metropolitan zones that typically sprawl far beyond the higher-density regal-ritual or civic-ceremonial monumental centers. The boundary between these two spaces is frequently blurred (Fletcher, 2012). Civic-ceremonial centers often have extensive green spaces, such as household-level gardens and larger areas like parks (Stark, 2014a; Stark, 2014b). This integration of agricultural land within urban environments appears to have made agro-urban settlements flexible and sustainable (Isendahl and Smith, 2013; Scarborough and Isendahl, 2020).

While recent work has considered the decline of agro-urban centers (Lucero et al., 2015; Gilliland et al., 2013; Fletcher 2009: 15), there has been comparatively little effort devoted to understanding how these massive settlements formed and grew. In this paper, we draw on multiple datasets including lidar, archaeological excavation data, radio-carbon dates, and machine learning algorithms to map the development of one of the world's largest preindustrial agro-urban settlements: Angkor, in present-day Cambodia (Evans et al., 2007). Angkor was the preeminent regional power from the 9–15th centuries CE, controlling a large portion of mainland Southeast Asia. Our work suggests that Angkor's initial population in the 9th century likely was approximately 160,000–250,000 people and grew to between 688,000–900,000 people at its apogee in the 12–13th centuries CE (Klassen et al., 2021). We argue that Angkor's higher-density civic-ceremonial center (henceforth CCC), dispersed rural metropolitan area (henceforth AMA) and its embankments (henceforth BANKs) grew at different rates, and that this growth was facilitated by both top-down infrastructure development as well as bottom-up organization. In the following section we contextualize our work within broader studies of agro-urban settlements, before moving to provide a background on Angkor and our methods, and finally offering a detailed discussion of historical and demographic developments at Angkor over time.

## **2. Agro-urbanism in the archaeological record**

Agro-urban settlement complexes are distinctive and important urban morphologies that are found in both the ancient and contemporary world. Despite the increased attention paid to agro-urban centers in recent scholarship, understanding the conditions and structures that allowed for the emergence and development of these settlements is still in the early stages (Fletcher 2019). Fletcher and others have proposed that extensive, low-density urban forms emerged from high-density cities that continued expanding (Fletcher, 1995; Chapman and Gaydarska, 2016a). Other recent work has identified different developmental trajectories based on the areal extent of the settlements (Fletcher and White, 2018); in this model, smaller (1–100 km<sup>2</sup>) settlements tend to expand out of smaller villages. Several scholars have noted that these sites were egalitarian or heterarchical in their organization, with bottom-up or local organization as the driving force behind their trajectory of

growth (Chapman and Gaydarska, 2016b; McIntosh, 1999; McIntosh and McIntosh, 2003; Moore, 2017).

In contrast, the vast agro-urban settlements (over 100 km<sup>2</sup>) that developed in the humid tropics of Mesoamerica and Asia had a different type of organization. These settlements contained large communal ritual spaces, monumental architecture, and hydrological infrastructure that integrated rural spaces and civic-ceremonial centers (Fletcher and White 2018; Lucero et al. 2015). The socio-political organization of these cities was unequivocally hierarchical, yet we see variability in the role of elite power, state control, and centralized planning as drivers for the development of these sprawling settlement complexes. For example, at the Maya site of Caracol in Belize, it appears that the development of causeways connecting three distinct settlements catalyzed their growth and eventual coalescence into a single settlement. Over time, the epicenter at Caracol was rebuilt and expanded and continued to integrate administrative and market areas through transportation infrastructure. Agricultural fields and heterogeneous residences were also incorporated into this landscape (Chase and Chase, 2016). While this might suggest that elite planning and organization facilitated the growth of the city, recent work has identified that bottom-up construction and management of water reservoirs was also key to the successful expansion and agricultural productivity of this settlement (Chase, 2016). Similar studies at other Maya sites suggest households in those locations had even more autonomy in managing their infield agricultural systems, thereby shaping the organization of their settlement landscapes (Fisher, 2014).

The site of Anuradhapura, Sri Lanka, shows a different mix of centralized and decentralized autonomy in the formation of its extensive settlement complex. There the hinterland was integrated with the civic-ceremonial center by way of a network of Buddhist monasteries that held considerable economic power (Strickland et al., 2018). The growth of Anuradhapura and its extended hydraulic infrastructure began prior to the development of the monastic system, but expanded considerably as the monastic system grew. Anuradhapura's expansion seems to have been facilitated by both state-level construction of large water storage tanks and complex canal systems, as well as more localized hydraulic infrastructure overseen by the Buddhist monasteries (Gilliland et al. 2013; Strickland et al., 2018). The relationship between the secular rulership and powerful Buddhist communities in the hinterland shaped the formation of this urban center.

These studies raise intriguing questions about the conditions and structures that contribute to the development of extended settlement complexes; frequently, however, the absence of fine-grained detail impedes our ability to fully understand the complex processes at work across multiple scales of time and space, and this has certainly been true of Angkor itself. In this paper, therefore, our aim is to draw together several decades of multidisciplinary research results to model Angkor's spatio-temporal development in granular detail, in order to inform a discussion of the emergence and growth of the settlement complex overtime (Fig. 1). Angkor is unusual in its archaeological coverage: over the last thirty years, more than 3000 km<sup>2</sup> of the Greater Angkor Region has been mapped by archaeologists, by hand, in exceptional detail and then followed up with comprehensive ground verification (Chevance et al., 2019; Evans, 2007, 2016; Evans et al., 2013; Gaucher, 2004; Pottier, 1999) (Fig. 1). Recent work combining geographic information systems analyses and machine learning algorithms has enabled temples and other features on the landscape to be dated (Klassen and Evans, 2020; Klassen et al., 2018) and has provided models of population growth and decline (Klassen et al., 2021). This extensive and unusual dataset allows us to begin creating finer-grained models for the development of the settlement complex of Angkor over time.

## **2.1. Angkor's landscape and temples**

The empire's capital and heartland, the Greater Angkor Region, lies on a lowland plain on the eastern edge of the floodplain of the Tonle Sap Lake. As we define it for the current study, the Greater Angkor Region encompasses approximately 3000 km<sup>2</sup>, reaching from the Tonle Sap into the Kulen hills (Fig. 1). This boundary is somewhat arbitrary and partially based on the watershed catchment boundaries of Angkor's rivers and the original Zoning and Environmental Management Plan for Angkor (ZEMP) established in the early 1990s as part of Angkor's UNESCO World Heritage listing (Evans, 2007; Wager, 1995). The extent of settlement beyond these boundaries is the subject of ongoing research, but it is clear that the low-density distribution of local temples extends in a wide arc across modern-day Cambodia. The monumental or CCC zone, containing the massive stone temples for which Angkor is famous, encompasses approximately 30 km<sup>2</sup> (Fig. 2)<sup>1</sup>.

Conventionally, the Angkor period is considered to have begun with the ruler Jayavarman II (r. 770–830 CE), who established himself as universal monarch in 802 CE, and ended in 1431 CE with the supposed sacking of Angkor by the rival kingdom of Ayutthaya located in present-day Thailand (Briggs, 1951; Coëdès, 1968). These simplified narratives gloss over a great deal of historical complexity. Sedentary agricultural communities have been living on the eastern edge of the Tonle Sap floodplain since at least 1000 BCE (Pottier, 2006b; Pottier et al., 2004). Numerous inscriptions dating from the 6–8th centuries CE, along with the remains of brick temples, attest to the presence in this region of a significant population ruled by powerful elites throughout the Pre-Angkor period (6–8th centuries CE) (Pottier, 2017). Furthermore, there is no evidence for a sudden or violent downfall at the end of the Angkor period in the 15th century CE. On the contrary, recent archaeological and environmental studies have pointed towards a gradual demographic decline beginning in the late 13th century CE, driven in part by a series of climatic changes that heavily disrupted Angkor's water management system (Buckley et al., 2010; Buckley et al., 2014; Hall et al. 2021; Penny et al., 2019). Additionally, expanding trade opportunities, especially with China seems to have been an important “pull-factor” drawing people further south near the modern capital of Phnom Penh to take advantage of these economic opportunities (Polkinghorne, 2018; Vickery, 1977, 2010; Polkinghorne and Sato, 2021).

---

<sup>1</sup> The 30km<sup>2</sup> area represents the main location of Yaśodharapura. If the earlier capital of Hariharālaya is included, the total area is closer to 75km<sup>2</sup>

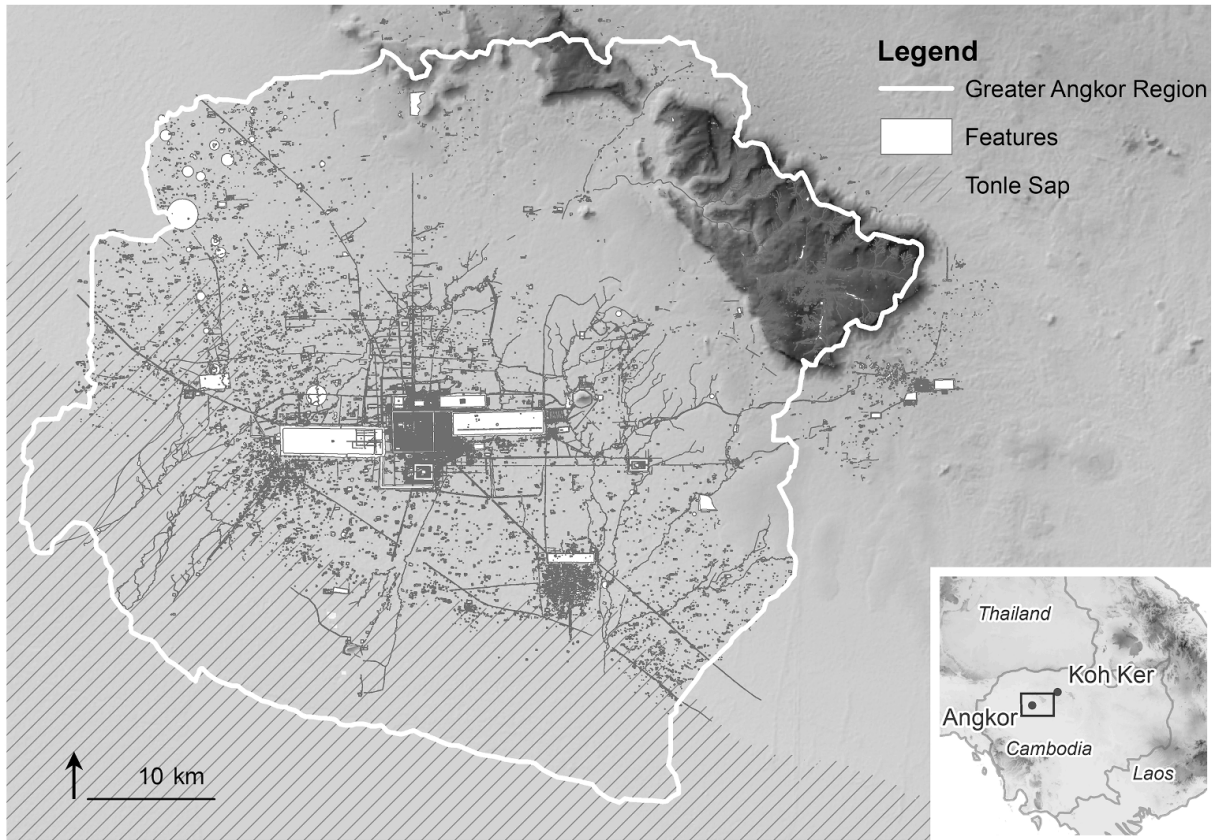


Fig. 1. The 3000 square kilometer area of Greater Angkor, including the upland region of Phnom Kulen, and the 10th century CE capital of Koh Ker.

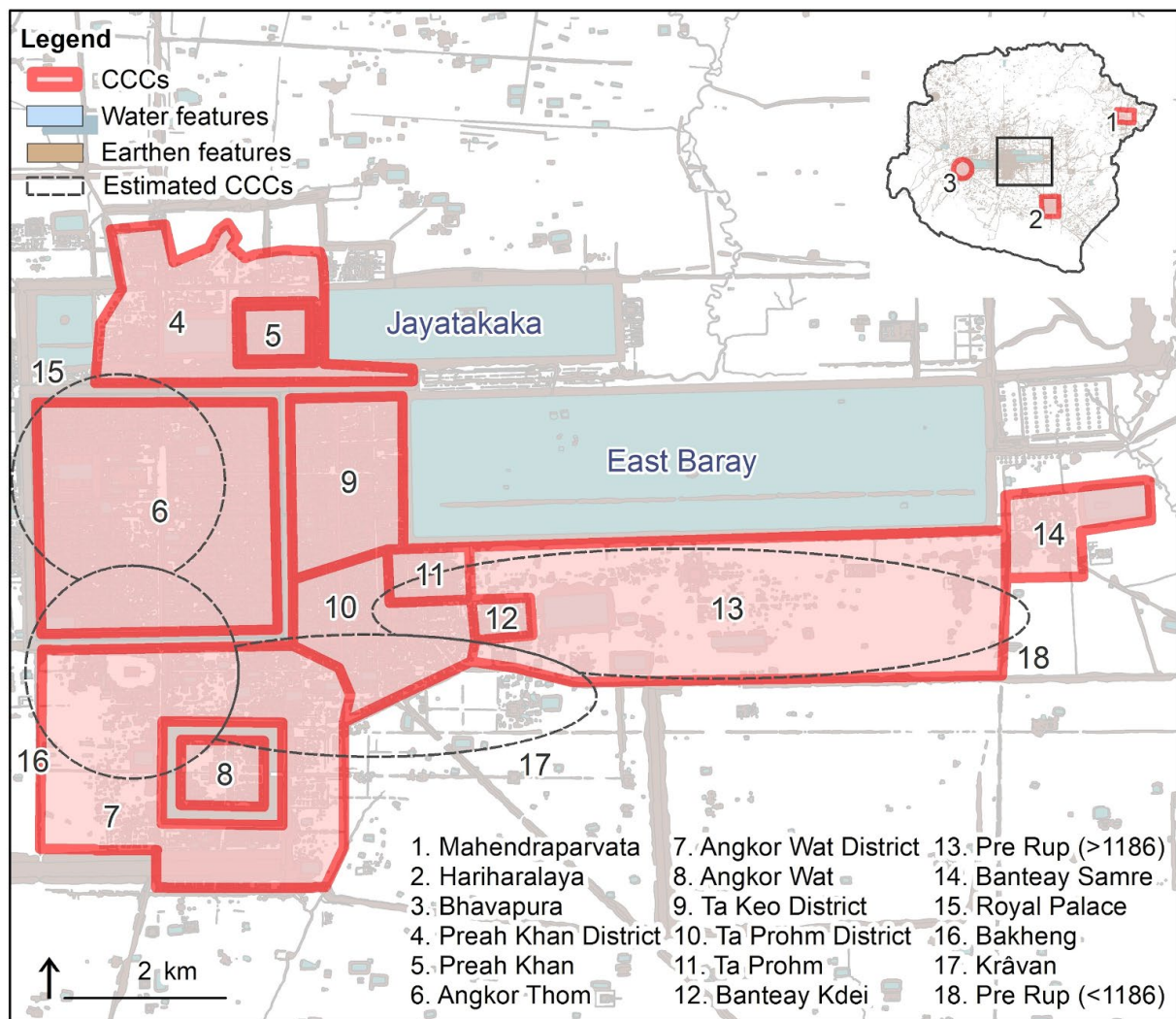


Fig. 2. Map of the 17 CCC zones. Adapted from Fig. 4 in Klassen et al. 2021 originally published in Science Advances.

Insights about Angkor’s political organization can be gleaned somewhat from inscriptions, which describe a powerful king at the top of a hierarchy that included many bureaucrats, elite families and relatives, as well as religious specialists, craftsmen, servants, farmers and slaves (Lustig et al., 2021; Lustig and Lustig, 2013; Sedov, 1978). Kings would give or authorize the purchase of land, which in turn was frequently used to establish temples. In practice, the power of Angkorian kings has been described as cyclical; waxing and waning over time (Lustig, 2011; Sahai, 1977; Stark, 2006a). Particular rulers seem to have been more effective at consolidating and expanding the empire than others with the power of regional elites shifting similarly (Lustig, 2011; Lustig and Lustig, 2019).

Angkor’s agro-urban landscape grew incrementally over time, driven in part by the state construction projects of Angkorian kings who implemented major public works, including the construction of large water storage tanks or *baray* and the raising of massive stone temples (Table 1). These acts would transform the landscape and allocate (or reallocate) resources, since each temple would need many workers and associated support staff (Groslier, 1979; Pottier, 2000b). To track these developments over time and space, we divide Angkor’s landscape into three categories—the civic-ceremonial center or CCC, the metropolitan area or AMA, and the embankments or BANKs—as well as five periods that represent developments in the CCC by some of Angkor’s major kings (Table 1 and Fig. 2).



The AMA was an anthropogenic landscape (Chase and Chase 2016) dominated by rice fields (Hawken, 2013; Hawken and Castillo, 2021), earthen occupation mounds, and small community temples. This Angkorian settlement pattern is similar to those found throughout the Lower Mekong Basin, from the Khorat Plateau (Evans et al. 2016) to the Mekong Delta (Stark 2006b; Stark et al. 2015). In previous publications, we have referred to this zone as Angkor's hinterland (e.g., Carter et al., 2018; Evans et al., 2013; Klassen et al., 2018). However, in other archaeological studies around the world, the term hinterland has often referred to a remote zone outside the core's administrative control (e.g., Kepecs et al., 1994; Smith, 2014b). The area under consideration here was not peripheral but distinctly integrated into Angkor's CCC through hydraulic and transportation infrastructure (BANKs) as well as a ritual temple-economy (Fletcher et al., 2008a; Fletcher et al., 2008b; Hendrickson, 2010; Sedov, 1963). For this reason, we use the term metropolitan area to describe the almost 3000 km<sup>2</sup> zone surrounding the CCC as it is part of Angkor's urban form, not detached or separate from it as the term hinterland might imply.

AMA community temples have a particular configuration known as *prasat-trapeang* (temple-pond) (see discussion in Klassen and Evans 2020) (Fig. 3). AMA temples were frequently constructed of perishable materials, most have not been investigated archaeologically, and few have associated inscriptions. However, recent studies have combined multiple lines of evidence with statistical techniques to predict the construction dates of over 1000 of these temples in Angkor's AMA (Klassen and Evans, 2020; Klassen et al., 2018). In the Angkorian period, temples were the center of social and ritual life, and their affiliation with elites and royalty also made them an important part of the political economy (Lustig and Lustig, 2019; Sedov, 1963; Sedov, 1978). Although land ownership changed over time (see Lustig and Lustig, 2019, and discussion below), temples in the AMA frequently owned or controlled agricultural land and were central to the expansion of Angkorian agrarian economy (Sedov, 1963). Temples also marshalled many lower-status community members' labor. These individuals are frequently listed in large numbers in inscriptions (Lustig and Lustig, 2013; Lustig and Lustig, 2015), where they are often described as unfree or slaves (see further discussion below). In some cases, labor was provided by cyclical workgroups through a fortnight or seasonal calendar (Lustig and Lustig, 2015; Sahai, 2012; Stark et al., 2015).

Villages in the AMA were also tied to larger "central temples" in the AMA to which they provided goods and labor (Sedov, 1963). The inscriptions of Ta Prohm and Preah Khan, both state temples of Jayavarman VII (r. 1181/1183 – c.1220 CE), describe in detail the large number of villages tasked with providing rice, goods, and labor to these institutions (Cœdès, 1941; Cœdès, 1906; Maxwell, 2007). For example, at Ta Prohm, inscriptions indicate that there were 12,000 people associated with the functions of this single temple and 66,625 people from 3,140 villages that provided goods and labor (Cœdès, 1906). However, state temples also owned agricultural lands and temple workforces (Sedov, 1963; Sedov, 1978).

The AMA was not just an agricultural zone but a "theocratic" landscape (sensu Coningham et al., 2007), in which temple communities organized the agricultural land, labor, rice surplus, socio-political, and religious life of its members. Epigraphic data suggest that the rulers, state officials, and other elites were actively engaged in the temple economy, particularly in reassignments of land and labor (e.g., Lustig and Lustig, 2015; Moffat et al., 2020; Ricklefs, 1967). While private land ownership was common, the King appeared to have had final authority regarding land claims, which facilitated an elite patronage system (Mabbett, 1978). Although not organized in a formal hierarchy, the AMA temples were connected to the CCC through these temple-related economic networks. Additionally, the AMA included state-sponsored infrastructure in the form of transportation networks

(Hendrickson, 2010), water management features, and embankments (below) (Fletcher et al., 2008a; Fletcher et al, 2008b Klassen and Evans, 2020), which tied this space into the CCC.

The CCC was the location of most of Angkor's massive, states-sponsored stone temples and contained the city's highest population densities at different points in its sequence, although densities fluctuated through time. Like the AMA landscape, the CCC also had extensive hydraulic features. Limited excavations within CCC temple enclosures suggest the presence of garden spaces around residential areas (Castillo et al., 2020). In the CCC, temples are constructed of stone or brick and surrounded by occupation mounds (Fig. 3). Temple enclosures themselves may have served as urban neighborhoods and likely included the temple staff's habitation areas (Carter et al., 2018; Stark et al., 2015).

The CCC grew over time as various kings built new temples and transformed the landscape. Our model identifies 17 diachronic zones of temples and their associated occupation mounds (Fig. 2). The areas of some of these zones are estimated, as later temples and occupation mounds expanded over earlier ones. For example, our portions of the Pre Rup zone (or district, see Heng et al., 2021) were taken over later by the construction of Ta Prohm and Preah Khan temples. Similarly, the initial Royal Palace zone was subsumed by the later walled city of Angkor Thom (Fig. 2). In such cases, we drew from studies on the chronology of the urban core to delimit the extent of the CCC zones at different points in time (see Table S1 in Klassen et al., 2021 for a detailed discussion).

### **3. Methods**

Angkor's landscape is a palimpsest, in the sense that the patterns we see on the surface today are the end product of multiple periods of human occupation and transformation spanning millennia, with newer developments often at least partially erasing the traces of previous urban and agricultural networks. Since the 19th century, one of the key challenges at Angkor has been to make sense of the complex, overlapping patterns that we see on the landscape, particularly when we look at it from above, and to organize the traces into some kind of chronological sequence. Although a limited number of archaeological excavations have provided radiocarbon dates and many of the major temple sites in the CCC include inscriptions with consecration dates, the vast majority of features on Angkor's landscape remain undated by absolute dating techniques, and increasingly we have come to rely on establishing webs of relative chronological information that are anchored, in places, to absolute dates from inscriptions or excavations, or to periods derived from art historical or architectural studies. Earlier publications discuss in detail our methods for dating AMA features at Angkor (Klassen et al., 2018) and estimating Angkor's population (Klassen et al, 2021). We summarize these approaches below.

Period	Ruler	Dates of Reign	Major developments	Population			
				CCC	AMA	BANKs	Total
Period 1: 770–888 CE Pre-Angkor Period and the early cities of Mahendraparvata and Hariharālaya	Jayavarman II	802–835 CE	Jayavarman II declared universal monarch. Dominion includes city of Hariharālaya	89,137	70,668	88,891	248,696
	Indravarman I	877–889 CE	Construction of the Indratatāka baray, Preah Kō Temple, and possibly the Prei Monti royal palace and Bakong Temple at Hariharālaya				
Period 2: 889–1001 CE Initial foundation of Yaśodharapura Capital at Koh Ker (Chok Gargyar) Return of capital near Pre Rup	Yaśovarman I	889–900 CE	Declared construction of the Lolei temple in Hariharālaya, moved the capital northwest centered on Phnom Bakheng and constructed the East Baray.	76,796	318,439	139,191	525,313
	Jayavarman IV Rājendrarvarman II	928–941 CE 944–968 CE	Moved capital to Koh Ker Returned capital to Angkor and established the state temple of Pre Rup in 961 CE.				
Period 3: 1002–1112 CE Reign of Sūryavarman I	Sūryavarman I	1002/ 1003–1050 CE	Modified the Phimeanakas temple in the area near the Royal Palace as well as the Baphuon temple and West Baray.	117,288	431,181	183,399	761,663
Period 4: 1113–1180 CE Reign of Sūryavarman II and construction of Angkor Wat	Sūryavarman II	1113–1149 CE	Expanded the territory of the Angkorian kingdom and built Angkor Wat	122,534	491,322	203,949	847,600
Period 5: 1181–1300 CE Reign of Jayavarman VII	Jayavarman VII	1181/1183- c.1220 CE	Reclaimed Angkor from Cham rulers, established Angkor Thom, the Bayon, Ta Prohm, Preah Khan, Banteay Kdei, and the Jayataṭāka baray.	159,852	497,949	216,215	903,811

Table 1 Major developments and rulers at Angkor with associated population estimates in the Civic Ceremonial Center (CCC) Angkor Metropolitan Area (AMA) and embankments (BANKs).

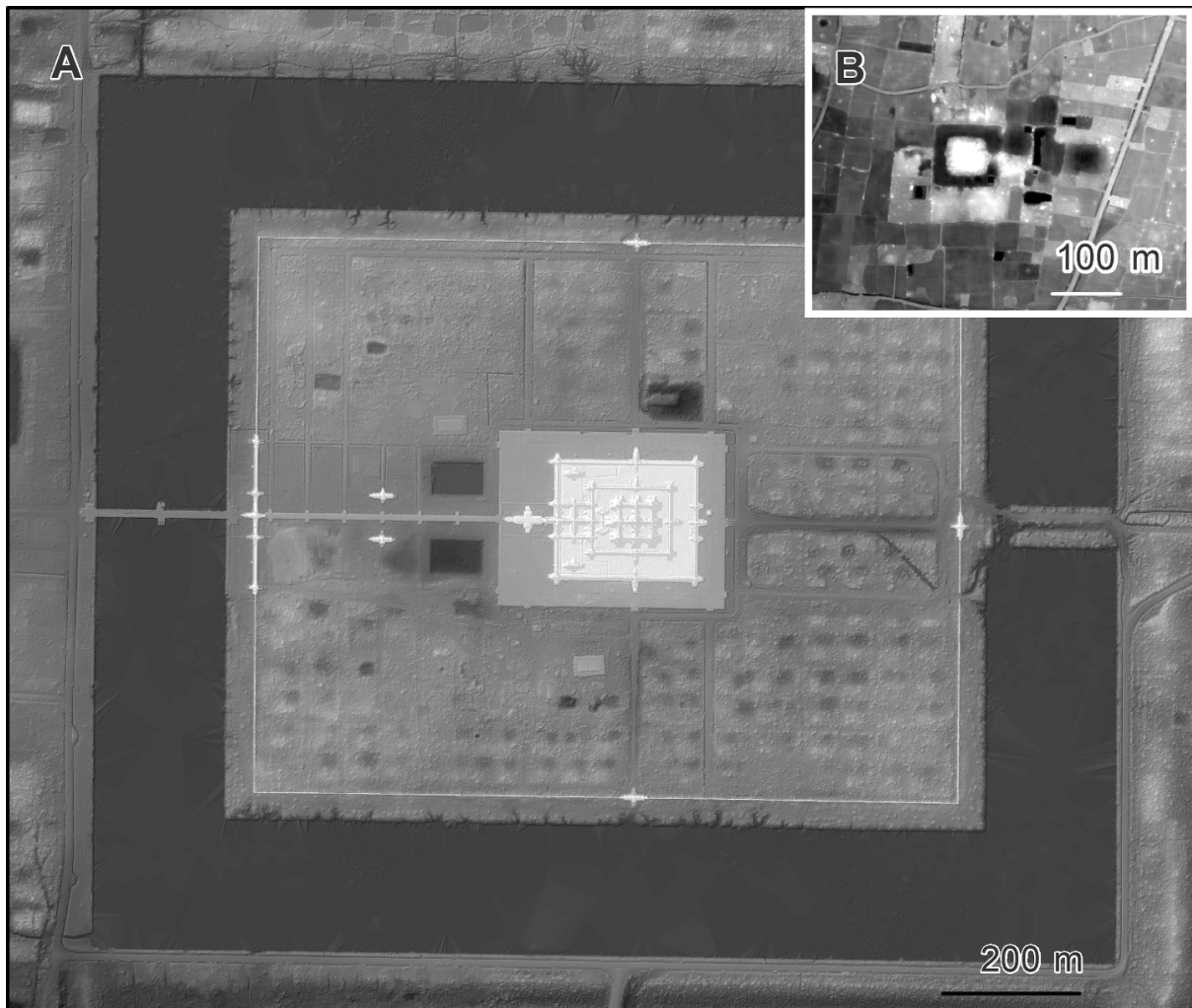


Fig. 3. Lidar imagery of (A) Angkor Wat and (B) a temple community with a classical prasat-trapeang formation in the AMA. The two areas are shown at the same scale to emphasize the much larger size of the state temples in the CCC compared to the smaller size of the temples in the AMA.

### 3.1. Dating and population estimates in the CCC

Temple spaces were our primary analytic unit. Temples in the CCC are often associated with art historical data and inscriptions that provide their date of construction or consecration (Klassen et al., 2018, 2021; Lustig, 2009; Polkinghorne, 2007).<sup>2</sup> However, dating the CCC is not always as straightforward, as parts of this landscape were used and reused over time, obscuring previous habitation and use. Some scholars have suggested that the builders of Angkor's temples followed particular ritual practices in which temples were to be constructed on "pure soil," which required that meters of existing soil be removed and replaced by beds of sand (Dumarçay et al., 2001: 34). In many cases, this soil replacement obscures any previous habitation in the area, although excavations at Angkor Wat and Ta Prohm suggest some light prior habitation/use of these landscapes (Carter et al., 2018; Carter et al. 2019; Sonnemann et al., 2015). At Angkor Thom, the orthogonally arranged city was developed in three phases beginning in the late 9th century CE, which continued until it was seemingly formalized with the construction of an enclosure wall by Jayavarman VII in the 12th century CE (Gaucher, 2017; Gaucher and Husi, 2013). These transformations complicate our understanding of the landscape's evolution; however, we attempt to incorporate all such factors into our model (see additional discussion in Klassen et al., 2021).

Archaeologists have used numerous methods for estimating population size and density in urban areas (Chamberlain, 2006; Hassan, 1978). Early studies estimated population by counting residential structures and estimating the number of people per structure (Nelson, 1909) or making similar calculations by considering floor area (Narroll, 1962; Wiessner, 1974). Ethnographic data about household size has been valuable for estimating the number of people per household (David, 1971; Kolb, 1985). Communities with robust mortuary data have used skeletal remains to model populations (see Milner et al., 2019 for a review of this method and its challenges). Other studies have taken a broader approach by considering available natural resources and the landscape's carrying capacity (Zorn, 1994). Scholars working in time periods with historical documents have used these resources to complement archaeological data (e.g., Jones and DeWitte, 2012; Kowalewski, 2003). More recent studies have used innovative methods to better estimate population, including the study of fecal stanols as a means of measuring population increases and decreases on a landscape (White et al., 2019), lidar data (Inomata et al., 2018), and agent-based modeling (Kohler et al., 2012) to identify residential structures more accurately.

These methods are difficult to apply at Angkor. Only a handful of skeletal remains have been uncovered as the dead were largely cremated in the Angkor period (Pottier and Chhem, 2008). Identifying dwelling spaces has been challenging due to the ephemeral nature of Angkorian habitation structures (Carter et al., 2021; see also Graham, 1996). Early scholars were aware of occupation mounds around Angkor and attempted to map them, but were hampered by the dense forest (Stark et al., 2015). Despite this, numerous estimates for Angkor's population have been proposed, evolving as conceptions of Angkor's urban form have shifted over time (see Table 2). Several of these methods have looked at the carrying capacity of the landscape and the population that could be supported based on the hydraulic network's development. The most recent and comprehensive estimate by Lustig (2001) argues for a total population of 750,000 people at Angkor's height, based on a 1500 km<sup>2</sup> area and assuming both of the largest water storage tanks (the East and

---

<sup>2</sup> To date features such as embankments, mounds, and ponds in the CCC, which typically do not have inscriptions, we used several methods. In many cases we could use a relative system of grouping features with other features that either date to the same time period or date to an earlier time period. For example, if a mound was built over an embankment it is assumed that the mound was built after the embankment (see Klassen et al., 2021 for further discussion).

West Baray) were in use but were not irrigating rice fields to the south. Despite usage in the comparative literature (e.g., Chase and Chase, 2016; Diamond, 2011: 539; Fletcher and White, 2018; Stone, 2009), this number was never meant to be definitive. Instead, it was an estimate of rice productivity and the carrying capacity of the Angkor region (Lustig, 2001). More recently, several scholars have provided population estimates for some of the enclosure areas within the CCC based on archaeological excavations and recently acquired lidar data (Table 2).

With lidar data, the mounded residential areas across the Greater Angkor Region have become more visible, even where they are covered by dense vegetation, allowing for more precise identification of residential spaces (Evans et al., 2013). Nevertheless, we are still unable to see individual house structures. To remedy this, we drew on recent archaeological work at Angkor Wat (Klassen et al., 2021; Stark et al., 2015). A horizontal excavation on a single mound in the Angkor Wat enclosure in 2015, as well as numerous smaller excavations on discrete occupation mounds, indicated only one household per mound, with each mound measuring approximately 600 m<sup>2</sup> in size. Although Cambodian households can include nuclear and extended families with varying numbers of children, ethnographic data suggests a preference for nuclear families with ethnographic surveys noting approximately five people per household (Delvert, 1961: 319; Ebihara, 2018: 51-68, 266; Ebihara, 1977: 52; Heuveline, 2017; Kalab, 1968: 525). Worldwide ethnographic studies also suggest that approximately five people are typical for most households (Hassan, 1978: 58).

To estimate the CCC population, we used a method we call the “mound method” in which the total square meters of mounded occupation features, including occupation mounds, pond embankments, and linear embankments were calculated. We then assumed that each household of five required approximately 600 m<sup>2</sup> (see also discussion in Klassen et al., 2021). For example, at Angkor Wat, we extrapolated the mound-depression pattern seen in the eastern portion of the Angkor Wat enclosure across the entire enclosure to estimate a total of 271–278 mounds and a population of 1355–1390 persons.

We view this 600 m<sup>2</sup> per household measurement as merely a beginning point based on the best currently available evidence for estimating the number of potential households, and by extension the total population at Angkor. A recent ethnoarchaeological study of household space around the ancient site of Bagan, Myanmar estimated the average household compound area to be 760 m<sup>2</sup>, close to our estimate at Angkor (Talving-Loza, 2020). We acknowledge that there was likely variation in household space in the past. Historical data has suggested that Angkorian households varied by size and status (Zhou, 2007: 49-50), and ethnographic studies also suggest that household size and density varied in village settings (Delvert, 1961: 180-198, 204; Ebihara, 2018: 41; Kalab, 1968; Prak, 2006). Rural households may have encompassed more space for gardens or tending animals than those in the CCC (Bâty et al., 2014). We also expect that further excavations will refine our estimate for household size in different contexts. At Ta Prohm, for example, not all mounds within the enclosure seem to have been as intensively inhabited (Carter et al., 2018).

Source	Estimated population	Estimated population Density (p)/km <sup>2</sup>	Source and notes
Civic-Ceremonial Center "The Hydraulic City"	600,000 <sup>a</sup>	526 p/km <sup>2</sup>	(Groslier, 1979)
"Hydraulic Suburbs" the less densely populated area of 10,000 km <sup>2</sup> surrounding the civic-ceremonial center that included 5 <i>srok</i> of Siem Reap province: Siemreap, Chikreng, Kralanh, Puok, Sautnikom.	429,000 <sup>a</sup>	464 p/km <sup>2</sup>	(Groslier, 1979)
Hinterland area of dryland cultivation to the north and east of the hydraulic city	872,000 <sup>a</sup>	101 p/km <sup>2</sup>	(Groslier, 1979 - see Carte 7)
Core Area 1000 km <sup>2</sup> area Includes major temple zone	150,000–400,000 people <sup>b</sup>	150–400 p/km <sup>2</sup>	(Lustig, 2001)
Inner Area 1500 km <sup>2</sup> area that includes Core Area as well as southern area near Tonle Sap	350,000–750,000 people <sup>b</sup>	233 p/km <sup>2</sup> 500 p/km <sup>2</sup>	(Fletcher et al., 2017; Lustig, 2001)
Extended Area 2500 km <sup>2</sup> Core and Inner Area as well as expanding to Damdek Canal to the East, westward to rivers, and north/northeast to foothills of Phnom Kulen.	650,000–1,000,000 people <sup>b</sup>	260 p/km <sup>2</sup> 400 p/km <sup>2</sup>	(Lustig, 2001)
Angkor's "Hydraulic Zone" (area between the East and West <i>baray</i> and the Tonle Sap lake) similar to Groslier's "Hydraulic City" above	288,000 <sup>c</sup>		(Acker, 1998 drawing on Groslier 1979)
Angkor Thom enclosure	16,000 (1651 ponds <sup>*/</sup> 2 families per pond) <sup>d</sup>	1778 p/km <sup>2</sup>	(Hanus and Evans, 2016) *The pond algorithm noted in the article identified 1651 ponds. **Based on a count from a map by Gaucher, 2004 ***2219 were mapped in the revised count of ponds within Angkor Thom based on lidar data (Hanus and Evans, 2016) (Evans and Fletcher, 2015)
	30,000 (2219 ponds <sup>*/</sup> 3 families per pond) <sup>d</sup>		
	40,500 (2700 ponds <sup>*/</sup> 3 families per pond) <sup>d</sup>		
Angkor Wat Enclosure	2500–4500 <sup>d</sup>		(Evans and Fletcher, 2015)
Ta Prohm Enclosure	1800–2000 <sup>d</sup>		(Evans and Fletcher, 2015)
Ta Prohm Enclosure	1400–2000 people <sup>e</sup>	882–1260 p/km <sup>2</sup>	(Carter et al., 2018)

<sup>a</sup> Based on available cultivable (irrigated) land.

<sup>b</sup> Population that could be supported by rice produced using various water management strategies.

<sup>c</sup> Estimated amount of people fed by dry season and wet season rice.

<sup>d</sup> Based on number of ponds within enclosure and 13th century visitor Zhou Daguan's account.

<sup>e</sup> Based on available mound space.

Table 2. Summary of previous population and density estimates proposed for Angkor.

It is worth noting that the 13th century Chinese visitor to Angkor, Zhou Daguan, described slaves associated with households in Angkor, observing that “most families have a hundred or more of them; a few have ten or twenty; only the poorest have none at all” (Zhou 2007: 58- 59). These slaves are described as ethnic minorities who had little status within Angkor’s society (Mabbett, 1983) and only allowed to “sit or sleep under the house” (Zhou, 2007: 59). It is unclear how to interpret this evidence when calculating household size at Angkor. Excavations within the CCC have not uncovered evidence for people such as slaves living underneath houses (Carter et al., 2018; Heng et al., 2021; Stark et al., 2015). It is unlikely that even ten slaves could easily live underneath an average-sized house and would therefore require additional living quarters. Zhou (2007: 59) also implies that some of these slaves may have lived outside the city. In both cases then, we believe we have accounted for this population in our model. Overall it is likely that a large portion of Angkor’s population was not free and would fall under some category of slave (Lustig and Lustig, 2013; Mabbett, 1983).

### **3.2. Dating and population estimates in the AMA**

Most temples in the AMA do not have accessible datable material culture or inscriptions and the “mound method” is difficult to apply in this zone; therefore, we used different methods to calculate dates and population estimates. In the AMA, over 1,100 *prasat-trapeang* (temple-pond) configurations have been identified and mapped (Klassen and Evans 2020; Klassen et al.2018). The AMA temple dates were estimated using an algorithm that used a combination of multiple linear regression and graph-based semi-supervised machine learning to predict temple dates with a 49–66-year average absolute error (see full discussion in Klassen et al., 2018).

As noted earlier, these temples are thought to be the center of Angkorian-period communities. Occupation mounds within the AMA are not as visible in the CCC, and Angkorian inscriptions are of limited utility. While many describe the numbers of temple personnel and even the names of villages and lands donated (Lustig and Lustig 2013, 2019; Lustig and Lustig 2015), they are non-specific regarding the size and the demographic make-up of villages. However, some temple communities do have surviving occupation mounds. With these temple communities, we applied an algorithm originally devised by Hanson and Ortman (2017) to provide spatial resolution to our population estimates. This algorithm assumes that density increases with the size of the occupation mounds. Ethnographic data suggests that approximately 100 families of five people were associated with each temple community (Delvert 1961 see also Kalab 1968). Based on this understanding, we adjusted the Hanson and Ortman algorithm, so the outputs have a mean population of 497. For temples without surviving occupation mounds, we assigned a population of 497 people (see further discussion in Klassen et al., 2021).

As in the CCC, the AMA landscape was dynamic. Over time, land belonging to lower-status families or corporate groups appears to have been sold to higher-ranking elites (Lustig and Lustig, 2019). Archaeological evidence suggests that smaller temples may have been replaced by or superseded by larger temples. For example, excavations at the site of Trapeang Thlok show the site was in use only from the end of the 10th century to the mid-11th century CE when it was seemingly abandoned, with the population possibly shifting to the larger nearby temple sites of Prasat Trapeang Ropou or Prasat Prei (Bâty, 2010). Determining the longevity of occupation at many sites will require similar careful archaeological excavation. However, in our model, we argue that populations of smaller temple communities would have been aggregated into those of large temples after the land was acquired. Therefore, once founded, the associated temple populations remain on the landscape, even if their affiliations, labor, and agricultural products were moved to a larger temple (see further discussion in Klassen et al., 2021).

### 3.3. Dating and population on the BANKS

The final form of occupation was on embankments (BANKs) of large water management features and roads. Evidence for occupation on the BANKs includes scatters of domestic debris such as ceramics on the surface and similar debris in the channels along with dark organic deposits (Fletcher et al., 2003: 109-111). These spaces may have been occupied by recent migrants to the city, as they offered land for housing that was not controlled by existing AMA communities, but this hypothesis requires further testing (Fletcher et al., 2003: 110-112; Klassen et al. 2021).

Angkor's hydraulic network has been reconstructed with a reasonable degree of confidence (Fletcher and Pottier, 2021; Fletcher et al., 2008b). While some hydraulic network elements (e.g., the massive East Baray) can be dated from inscriptions, other BANKs were indirectly dated by their spatial and functional relationship with well-dated temples or based on the superpositioning of features on a landscape. Features with unknown dates used a relative system of grouping features with other features that either date to the same time period or date to an earlier time period (see further discussion of these methods in Klassen et al., 2021).

The BANKs population was calculated assuming that the widest surviving part of the embankment represented the width of the embankment at the time of construction. We used our "mound method" described above to estimate household size on the embankments and with the same household composition. Preliminary surveys suggest that population density on the BANKs decreased farther from Angkor's CCC (Roland Fletcher, personal communication). Until further research can be done to determine variable population density along the BANKs, we report the maximum population on these features and note that the actual population likely fell within a range between zero and the population maximum (see Klassen et al., 2021).

To be sure, these population estimates are models that require further testing. Additional data from residential areas in both the CCC and AMA are needed to determine if the average household size, calculated here based on mounds within Angkor Wat, was typical or if this varied over time and space. Similarly, ethnographic data demonstrates that household composition was diverse and frequently changed over time (e.g., Ebihara 1977). As many house mounds in the AMA are missing, it is also difficult to determine exactly how many households were affiliated with a particular temple and ethnographic data suggest some flexibility in how households could support various pagodas (e.g., Kalab 1968). Excavations to identify datable material, would also help refine the timing of sites whose dates were estimated based on machine learning algorithms. Additionally, habitation on embankments has not been thoroughly examined and so our population estimates for these locations are the most speculative. We are curious if habitation was as intense on these features and if material culture might tell us more about who was living on these mounds and their occupations.

Our reliance on ethnographic data to estimate household and community sizes is both a boon and a limitation. The exact composition of an Angkorian household may be difficult to determine, especially given a lack of skeletal remains that might facilitate understandings of biological family relationships or clear outlines of dwelling size and rooms within a dwelling space. Non-kin members of households, such as slaves or servants, are also difficult to account for. Nevertheless, we feel that the ethnographic data, provides the most informed option for estimating population given that other source of data for estimating household size are absent.

### 4. Discussion

Table 1 lists the total number of people in the CCC, AMA, and BANKs during each period (see also Fig. 4). We note that at its height in the 12-13th centuries CE, Angkor's population could have been as



high as 900,000 people if the BANKs were fully inhabited. We also observe different rates of growth in these three occupation zones, with major population growth in the AMA in Period 2. However, in subsequent periods, we observe slower growth in the AMA with increasing population density in the CCC (Fig. 5 and Tables 3 and 4). This culminates in the highest population density in the CCC associated with Period 5 and the reign of Jayavaraman VII, who intensified and formalized Angkorian space. These developments were short-lived, however, as Angkor began its slow decline in the 13th and 14th centuries CE. In the sections below, we discuss each period in detail and the historical developments that were shaping Angkor’s agro-urban landscape.

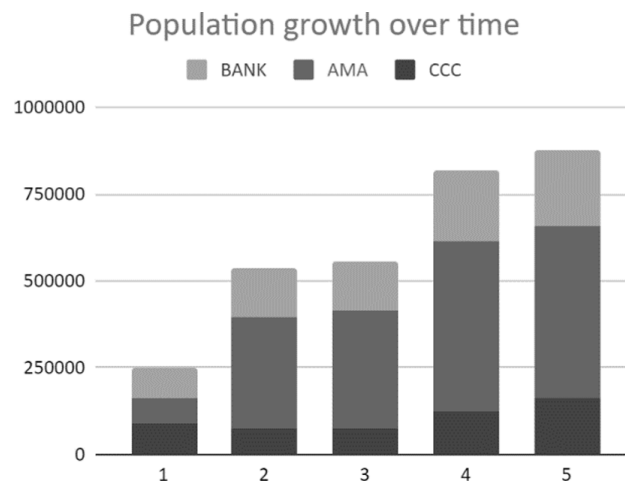


Fig. 4. Population growth over time.

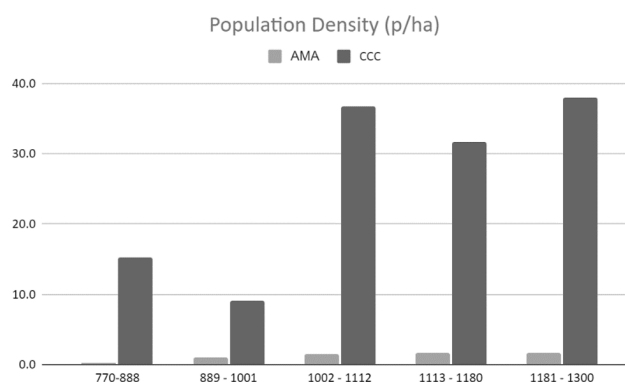


Fig. 5. Population density in the AMA and CCC zones over time.

#### 4.1. Period 1-770-888 CE: Pre-Angkor period and the early cities of Mahendraparvata and Hariharālaya

We begin our Period 1 in 770 CE with the habitation of two early Angkorian capital cities (Mahendraparvata and Hariharālaya) and a third likely population center near what would become the West Baray (Bhavapura) (Fig. 2).<sup>3</sup> We estimate the total population of Angkor in this period to be

<sup>3</sup> Our start date for Period 1 is based on a radiocarbon date from excavations within Hariharālaya and reflects evidence for this earlier population (Pottier et al., 2005: 15; Penny et al., 2006). This date is somewhat arbitrary; as our focus is on developments from the 9th century CE period, we use the 770 CE date to partially capture the earlier phase at Hariharālaya.

approximately 250,000 people (Fig. 4 and Table 1). The two capitals of Hariharālaya and Mahendraparvata have the highest population densities of approximately 16 persons per hectare (henceforth p/ ha) and monumental construction and infrastructure development we consider to be typical of CCC zones. The third population center, Bhavapura (discussed below), has a slightly lower population density of approximately 13p/ha (Table 4). The presence of temple communities in the AMA is sparse; just over 200 km<sup>2</sup> of Angkor’s AMA contains less than 5p/ha (Table 3) with approximately 70,000 people. However, if the embankments were fully inhabited at this time, this would add about 89,000 people to the AMA landscape.

Mahendraparvata, located on Phnom Kulen (Fig. 1), contains the massive Rong Chen pyramid temple, where Jayavarman II was supposedly declared a universal monarch establishing the start of the Angkor kingdom (Cœdès, 1968; Cœdès, 1943; Cœdès and Dupont, 1943). Recent studies have demonstrated that this was a large, planned city of approximately 40–50 km<sup>2</sup>, organized on a grid with occupation areas, temples, linear causeways, hydraulic features including a large reservoir (Chevance et al., 2019). The construction of these hydraulic features would have likely required a large labor force during the early phases of urban development on the mountain (Chevance et al., 2019; Penny et al., 2014). The city appears to date to the late 8th-early 9th centuries CE, although the presence of at least two Pre-Angkorian temples points towards this location’s importance during the Pre-Angkor period (Chevance et al., 2019). Calculating population at Mahendraparvata is challenging as there are not clear occupation mounds as seen in the lowland floodplains. For this reason, we estimated the population density to be similar to that at Hariharālaya (see Klassen et al., 2021).

Period				Total (km <sup>2</sup> )
	>5	5–10	10>	
1-770-888	201.2	21.1	62.8	285.0
2-889-1001	687.5	101.3	111.6	900.3
3-1002-1112	748.3	136.0	116.4	1,000.8
4-1113-1180	777.3	158.6	136.3	1,072.1
5-1181-1300	380.0	353.5	349.5	1,083.0

Table 3. Amount of km<sup>2</sup> with densities less than 5, 5–10, and greater than 10 people/ha.

The expansion of Hariharālaya as a capital is also associated with Jayavarman II, in the early 9th century CE, although many of the major constructions at Hariharālaya, including aspects of the brick towers of Preah Kô, the Indratatāka reservoir, and the Bakong temple are affiliated with the ruler Indravarman I (877–889 CE). Archaeological and epigraphic data suggest long-term habitation in the Hariharālaya area prior to the Angkor period. A recently identified inscription from the Bakong temple might be one of the oldest in the region, dating to the 6- 7th centuries CE (Pottier and Soutif, 2014). Excavations around the site of Trapeang Phong also indicate habitation from the 7th century CE (Pottier, 2017; Pottier and Bolle, 2009). Recent archaeological and palynological data suggest the construction of the Bakong began in the late 8th century CE, prior to Indravarman I’s reign (Penny et al., 2006; Pottier, 2012). By the 9th century CE, the population at Hariharālaya expanded, especially around the royal palace, Prei Monti (Pottier, 2012; Pottier et al., 2008; Pottier et al., 2009; Pottier et al., 2007). Using the mound method, we estimate the population of this city to be approximately 39,000 people.

The area around the future site of the West Baray and the Ak Yum, believed to have been known as Bhavapura, presents a unique challenge (Pottier 2017). This region has a long history of habitation.

Burials dating from the Bronze Age (approx. 1000 BCE) were identified in the West Baray (Pottier, 2006b; Pottier et al., 2004), and Iron Age or Protohistoric burials from the early-mid first millennium CE were uncovered during excavations at the nearby temple site of Prei Khmeng (O'Reilly et al., 2020; Pottier, 2001). Several inscriptions and large temples were located in this region, including Prei Khmeng, Ak Yum, and Wat Khnat, testifying to the significant population in this area in the 7th and 8th centuries CE (Pottier, 2006a; Pottier 2017; Pottier et al., 2001a; Pottier et al., 2001b). The Bhavapura settlement contained powerful rulers and may have included a “proto-baray” and associated rice fields (Fletcher et al., 2017: 277; Hawken, 2013: 360; Klassen and Evans, 2020: 5; Pottier, 2017; Soutif, 2009). Unfortunately, much of the habitation in this area was destroyed by the construction of the West Baray in the 11th century CE. In our model, we gave this area the same density as Pre Rup, whose mounds are visible and have been mapped. The surviving remains in this zone suggest a lower density than Hariharālaya. Fletcher and Pottier (2021) suggest that Bhavapura may have been approximately 35 km<sup>2</sup>. We estimate the total population at approximately 26,000 people; however, these estimates will need to be refined with further archaeological investigation.

#### *4.2. Period 2-889-1001 CE: Initial foundation of Yaśodharapura, Jayavarman IV's capital at Koh Ker (Chok Gargyar), and return to Yaśodharapura*

In 889 CE, the ruler Yaśovarman I came to power and established a new capital, Yaśodharapura, centered around the natural hill of Phnom Bakheng where he also built a temple (Gaucher, 2010; Pottier, 2000a) (Fig. 1). Inscriptions (K. 464 and K. 558) date the consecration of gods at Phnom Bakheng temple to 907 CE (Jacques, 2005; Jacques, 1970). During this period, we observe two major population centers within the CCC (Fig. 2). The first is around the temple of Phnom Bakheng extending to the north to the area around the Royal Palace and Phimeanakas and to the east around the Krâvan temple (Fig. 2 zones 15–17). Although heavily disturbed by later modifications and more intensive habitation during the reign of Jayavarman VII, excavations within Angkor Thom suggest habitation in this area dating at least to the 9th century CE and the period of Yaśovarman I (Gaucher, 2017; Gaucher and Husi, 2013). Inscriptions K. 291 and K. 576 also imply that Yaśodharapura reached this palace area (Coédès, 1937: 199; Finot, 1925: 307) and ceramics dating to the 9th century CE have been identified in excavations within Angkor Thom (Gaucher and Husi, 2013; Polkinghorne et al., 2014). The population of these three zones totals nearly 30,000 people. A second population center was around the temple of Pre Rup and the area of the Eastern Baray, also called the Eastern District (Heng et al., under review) (Fig. 2, zone 13). The mounds in the Eastern District are less disturbed; therefore, we are able to use the “mound method” to estimate population within this region and assume that similar densities were in place in the Yaśodharapura area with a population of almost 14,000 people.

It is unclear why Yaśovarman I decided to shift the location of the capital from Hariharālaya. As noted above, there had been a population living in this area during Period 1 and likely earlier (Groslier, 1979: 165- 166). Groslier notes that Yaśovarman had a “predilection” for hilltop temple sites (Groslier, 1979: 172). Hydrological studies also demonstrate that this area had a higher and less variable water table than Hariharālaya, which may have facilitated rice agriculture with groundwater access during the dry season (Acker, 2012). Increased water management certainly seems to have been an important focus during this period. Inscriptions (K. 280–283) describe the East Baray's construction in association with King Yaśovarman I in the late 9th century CE (Bergaigne, 1893: 407-408; Coédès, 1932: 108-109). During this period, the creation of the channel known as the Siem Reap River brought water closer to the newly established capital (Acker, 2012; Groslier, 1979; Lustig et al., 2008). The aim of the increased investment in water management is believed to have been to facilitate agricultural production (Fletcher and Evans 2012; Fletcher et al. 2008a; Fletcher et al. 2008b; Groslier 1979). The labor of a large number of people would have been required for the construction of the East Baray and related

channel features. Pottier (2000b: 105) has estimated that a workforce of 148,000 people could have taken three months to construct the larger West Baray. It is likely that such a workforce would have been drawn from these surrounding AMA populations.

Temple and districts	Date	Area of Mounds (ha)	Total Area (ha)	Houses	Population	Density (Ppl/ha)
Bhavapura (Ak Yum)	690	–	1900	–	26,296	13.84
Mahendraparvata	800	–	1545.00	–	24,982	16.17
Hariharālaya	770	466.3	2402.64	7,772	38,859	16.17
Bakheng (temple and district)	889	–	994.01	–	13,757	13.84
Krāvan (Pr.) (district)	921	–	575.4	–	7,963	13.84
Royal Palace (temple and district)	889	–	527.4	–	7,299	13.84
Pre Rup (Eastern District) (district)	961	165	994.0	2,751	13,757	13.84
Angkor Wat (temple)	1140	–	83.4	275	1,375	16.48
Angkor Wat (district)	1140	242.3	846.3	4,037	20,189	23.86
Ta Prohm (temple)	1186	28.4	66.7	473	2,366	35.49
Ta Prohm (district)	1186	176.5	275.8	2,941	14,708	53.33
Preah Khan (temple)	1191	32.3	56.6	539	2,695	47.58
Preah Khan (district)	1200	363.1	408.3	6,051	30,256	74.10
Angkor Thom	1200	497.7	833.5	8,296	41,478	49.76

Table 4. Population estimates and densities of sites mentioned in the text.

Despite the infrastructure development at Yaśodharapura during Period 2, our model estimates a population decrease to approximately 77,000 people in the CCC during this period. Part of this may be due to the estimates used in our model that was based on the visible occupation mounds at Pre Rup, which are lower density than those at Hariharālaya. However, there were additional changes taking place in Angkor’s landscape. During this period, King Jayavarman IV (r. 928–941 CE) ruled from an alternative capital site at Koh Ker (called Chok Gargyar) approximately 80 km northeast of Angkor in what is now Preah Vihear province (Fig. 1). Although well-located for access to stone, recent work has identified serious problems with the city’s water management system that likely affected its viability as a long-term capital (Evans, 2010; Lustig et al., 2018; Moffat et al., 2020). The establishment of this alternative capital may have drawn some population away from the CCC at Yaśodharapura (Hall et al., 2018). However, this period also saw the foundations of numerous temples in the AMA by non-royal officials (discussed below and Lustig and Lustig, 2019).

In the mid-10th century CE, King Rājendravarman II (r. 944–968 CE) returned the capital to Yaśodharapura from Koh Ker, where it remained the location of Angkor’s capital for several centuries, growing and expanding with subsequent kings. Rājendravarman II constructed the large state temple of Pre Rup near the East Baray, inaugurating it in 961 CE (Cœdès, 1909). Additional modifications were made to the East Baray during this period, including the construction of the East Mebon temple on a man-made island in the middle of the baray (Dumarçay et al., 2001: 64–65; Fletcher et al., 2008b; Groslier, 1979).

Archaeological evidence suggests continued habitation at Bhavapura until the construction of the West Baray in the 11th century CE (Pottier et al., 2001a; Pottier et al., 2001b). For these reasons, we have left these population estimates unchanged until that time. Archaeological and palynological data suggest some depopulation at Hariharālaya with the establishment of Yaśodharapura (Penny, 2006). However, archaeological excavations at Trapeang Phong show evidence for continued habitation in this area until the 15th century CE, and the central tower of Bakong was renovated in first half of the 12th century CE (Boisselier, 1952: 223; Pottier and Bolle, 2009). Our model leaves a population of approximately 37,000 people, moving only a small elite population of approximately 2,000 people to Yaśodharapura. In contrast, Mahendraparvata appears to have been depopulated during this period, although later features indicate the area was not completely abandoned (Chevance et al., 2019). For

this reason, we have reduced the population at Mahendraparvata to 1000 people. This number is merely an estimate and will need to be refined with further archaeological investigation.

While the CCC population was seemingly shrinking, Angkor's AMA population saw a dramatic jump, from 70,000 to approximately 318,000 people. The total area of land with a density of <5 people per hectare expands from 201 km<sup>2</sup> to 687.5 km<sup>2</sup> (Tables 1 and 3). Inscriptional evidence suggests that non-royal officials established many new temple communities in the AMA during this period (Klassen et al., 2018; Lustig and Lustig, 2019). Additionally, the water management system and road and transportation networks expanded, especially in the northeastern portion of Angkor's territory (Hendrickson, 2010). Many of these new temple communities in the 10th and 11th centuries CE (our Periods 2 and 3) specifically tend to cluster around the state-sponsored hydraulic infrastructure, including the construction of baray (Klassen and Evans, 2020). Combined with inscriptional evidence, Klassen and Evans (2020: 6) hypothesize that these newly established temple communities practiced a form of bottom-up organization where they had some degree of local autonomy over their associated land. These combined factors seem to have allowed for the expansion of Angkor's AMA into a massive agro-urban center (Klassen and Evans, 2020).

#### *4.3. Period 3-1002-1112 CE: Reign of Sūryavarman I*

In the early 11th century CE, there was an internal struggle for power between two rival kings, with Sūryavarman I (1002/1003-1050 CE) ultimately claiming the throne, which begins our Period 3 (Vickery, 1985). Sūryavarman I continued habitation within Yásodharapura and modified some of the Royal Palace area and the temple of Phimeanakas, while also constructing numerous temples outside of the capital (Jacques and Lafond, 2007). As part of these expansions, Sūryavarman I also seems to have formalized some of Angkor's road networks (Hendrickson, 2010).

During this period, the dramatic increase in the AMA population begins to slow, with only about 112,000 new people during this more than 100 year period. In contrast, the CCC expands to approximately 117,000 people. The CCC's growth is likely due to the formalization of the Royal Palace compound, including the nearby temples of the Baphuon (Leroy et al., 2015) and Phimeanakas in the area that would later become incorporated into Angkor Thom (Gaucher, 2017). King Sūryavarman I is also associated with the construction of the West Baray in the western part of the capital (Pottier, 2000b). The construction of this feature would have required a large labor force, likely drawn from AMA populations and disrupted much of the earlier settlement of Bhavapura.

While one might expect continued expansion of AMA populations due to the West Baray's construction, our model predicts only modest growth. Klassen et al. (2018) have noted a decline in new AMA temple constructions from the 11th century CE onward. Inscriptions also indicate a shift in the titles of individuals buying and selling land during the 10th century CE, prior to Sūryavarman I's reign. Inscriptions demonstrate changing land ownership, where high-ranking elites appeared to have monopolized landholding at the expense of the lower status individuals and communal/corporate groups (Lustig and Lustig, 2019; cf. Vickery, 1985). Additionally, the number of tax immunities granted to new temple foundations appears to decline in the 11th century CE, which would have discouraged the formation of new temples (Lustig and Lustig, 2019). Taken together, it appears that during the 11th century CE, there was a shift from the establishment of new temples on undeveloped land to elite consolidation of land ownership (Klassen and Evans, 2020; Lustig and Lustig, 2019). These top-down controls appear to have slowed Angkor's AMA population growth.

#### *4.4. Period 4-1113-1180 CE: Reign of Sūryavarman II and construction of Angkor Wat*

Our Period 4 begins with the next major king of Angkor, Sūryavarman II (1113–1149 CE), who came to power in the early 12th century CE and is responsible for Angkor’s most famous temple, Angkor Wat. Like his namesake, he also expanded the Empire’s borders. While we primarily associate this period with Sūryavarman II, a newly discovered inscription also describes a subsequent ruler, King Tribhuvanadityavarman, who took power after Sūryavarman II and ruled from 1149 to 1180 CE (Sharrock, 2018). The inscription also recounts that he built “eight Buddhist sanctuaries” and was then killed during a Cham attack on Angkor in 1180 CE (Sharrock, 2018: 112). This new inscription suggests that Tribhuvanadityavarman was a more important ruler than previously supposed, and future research is needed to determine his impact on Angkor’s history.

Our model predicts a continued slow population growth in both the CCC and AMA during this period. The CCC saw a population increase of only approximately 5,000 people. However, Angkor Wat’s construction had major impacts on Angkor’s socio-political landscape and may have inspired reorganization of habitation within the CCC. The construction of the temple itself would have required an immense number of laborers. Additionally, lidar images reveal a large series of square spirals south of Angkor Wat, whose function is not yet clear, but may have acted as large gardens (Evans, 2016). During his reign, Sūryavaraman II invaded the neighboring kingdom of Champa in Vietnam and moved the Angkorian Empire farther into Thailand and the northern Malay Peninsula (Coe and Evans, 2018; Coedès, 1968). One must wonder if this expansion and focus outside the Greater Angkor Region contributed to the slower growth of the AMA during this period (Table 1).

#### *4.5. Period 5–1181/1183–1300 CE: Reign of Jayavarman VII*

The ruler many consider to be Angkor’s most celebrated king, Jayavarman VII, came to power at the end of the 12th century, which marks the beginning of Period 5. With Jayavarman VII’s reign (1181/1183-c.1220 CE) came a period of dynamism. He was responsible for the greatest expansion of the Empire, massive building campaigns within the capital, and additions to the water management network (Coedès, 1943). Jayavarman VII is associated with the construction of five major temples in Angkor’s CCC: the state temple of the Bayon, Banteay Kdei, Ta Prohm, Preah Khan, and Neak Pean on a small island within the Jayataṭāka baray (Coedès, 1968; Stern 1965). Additionally, Jayavarman VII built large temples, such as Banteay Chhmar outside the Greater Angkor Region (Sharrock, 2015), contributed to Angkor’s expanding road networks (Hendrickson, 2010), and constructed small hospital chapels inside and outside the CCC (Pottier and Chhem, 2008; Sharrock and Jacques, 2017).

We see another demographic increase during this period, with the population across Angkor reaching its peak—perhaps up to 900,000 people—and approximately 1000 km<sup>2</sup> of the 3000 km<sup>2</sup> study having been occupied (Tables 1 and 3). This population growth is largely due to an increase in population in the CCC, from approximately 122,000 to 160,000 people, as the AMA and BANKs populations grew only slightly. In portions of the CCC, population density increased dramatically. For example, habitation around Preah Khan temple may have had a density as high as 75p/ha (Table 4). However, we note that excavations at the nearby Ta Prohm temple, also constructed by Jayavarman VII, suggest not all the mounds within the enclosure were equally or as intensively inhabited (Carter et al., 2018) and based on these data have revised the population estimates down from that predicted by the mound-method. Confirming that these enclosures were densely inhabited will require more fine-grained archaeological investigation.

Most scholars agree that late-12th – early-13th-century CE Angkor contrasted markedly with its preceding urban forms both in structure and worldview (Coedès, 1943; Coedès, 1968; Gaucher, 2004; Groslier, 1973; Hawixbrock, 1998; Mus, 1961; Sharrock, 2009), such changes likely explain its steep increase in population density. Jayavarman VII was a remarkably effective consolidator of previous

state infrastructure: roads, bridges, and even some provincial capitals (Hendrickson, 2008, 2010; Hendrickson and Leroy, 2020). Angkor's urban core also reflects this pattern in, for example, the formalization and walling of the Angkor Thom area (Gaucher, 2017). Labor requirements to undertake such massive state projects would have placed demands on both AMA and core populations and likely brought more residents to the city center (Klassen and Evans, 2020).

While there would have been an increased demand for agricultural production to support this large population of non-producers living in the CCC, recent work by Klassen et al. (2021) suggests that the heightened demand for surplus may not have led to the immiseration of farmers. Using settlement scaling theory, the authors argue that supra-household scale organization of agriculturalists facilitated through temple communities (whether owned on a local level or by elites) likely allowed for increasing returns to farming labor that did not necessitate decreased fallowing, more hours of work, or increased technological inputs. Further, the patterning of agricultural temple communities is consistent with the Alonso-Mullis-Mills model (Alonso, 1964; Brueckner, 1987), where land is valued based on the commuting cost to the CCCs. This indicates that the urban development and form of medieval Angkor was beholden to the same processes that structure the urban form of contemporary cities (Klassen et al., 2021).

A population of 900,000 people would have exceeded the previously estimated landscape capacity of 750,000 people without irrigation from the baray (Lustig 2001). Therefore one must wonder if Angkor's provincial zones were sending other food or staple finance to the capital (D'Altroy and Earle, 1985; Isendahl and Barthel, 2018). For example, an inscription from one of Jayavarman VII's large state temples in the CCC, Ta Prohm, notes that 66,625 people from 3,140 villages supplied the temple with goods and labor (Cœdès, 1906). Our model predicts only 2000 people living within Ta Prohm's temple enclosure, with an additional 14,000 in the temple district; far below the numbers mentioned in the inscription. Therefore, there must have been additional villages outside the temple district, likely in the AMA and beyond, that would have provisioned Ta Prohm. Inscriptions note that small AMA temples would collect goods and products from their agricultural lands, a small portion of which were sent as tax to larger centralized temples (Sedov, 1963). However, no inscriptions suggest staple finance was sent from AMA or provincial temples to the capital (Lustig, 2001, 2009). Instead, it appears that many temples would convert their staple finance to wealth finance or "high-value goods" that would be sent as tax to the capital (Lustig and Lustig, 2019). Several provincial zones, notably the province of Battambang were well-known in the 19th and 20th centuries CE for their fertile agricultural soils and rice productivity (Nesbitt, 1997). It is plausible these regions were sending rice to the capital; however, no such material or epigraphic evidence yet exists for this practice.

#### *4.6. Angkor's decline (after 1301 CE)*

Following a population high in Period 5, Angkor's population began to fall. Accumulated archaeological evidence suggests that Angkor's decline started in the late 13th through 14th centuries CE, before the supposed sacking of Angkor by the Kingdom of Ayutthaya in 1431 CE (Buckley et al., 2010; Carter et al., 2019; Fletcher et al., 2017; Hall et al. 2021; Penny et al., 2019; Penny et al., 2018). The last Sanskrit inscription dates to 1327 CE, with the last major stone temple (Maṅgalārtha) constructed in 1295 CE (Briggs, 1951: 243, 251; Finot, 1925: 393-406). The growing influence of Theravāda Buddhism, which had emerged with a new fervour in the late 13th century CE, appears to have appropriated pre-existing power structures (Thompson, 1997), though its relationship with the decline of Angkor as capital is unclear (Polkinghorne, 2021).

Additionally, recent environmental studies have suggested that people were likely leaving the walled precinct of Angkor Thom in the early 14th century CE (Hall et al., 2021; Penny et al., 2019). As noted

above, some portion of this population may have been moving further south, as Early Modern capitals were located closer to present-day Phnom Penh, where China's trading potential was growing (Polkinghorne, 2018; Vickery, 1977, 2010; Polkinghorne and Sato, 2021). On top of this, a series of decades-long droughts and heavy monsoons severely impacted Angkor's water management network in the 14th and 15th centuries CE, which must have also impacted Angkor's agricultural productivity (Buckley et al., 2010). If people were already leaving the CCC, one might wonder if the water network's maintenance was necessary as communities in the AMA could produce enough for themselves with their existing infrastructure (Fletcher et al., 2017: 283; Polkinghorne, 2018: 260). This is a question worthy of further investigation.

Accurately determining which portions of Angkor's landscape were still inhabited during this period is challenging. Recent archaeological studies have highlighted the dynamic and complex life histories of some of Angkor's temples and their populations. At Angkor Wat, there appears to be a break or decline in occupation mounds surrounding the temple, followed by a lighter re-occupation in the Early Modern period (Carter et al., 2019; Stark et al., 2015). Conversely, at Ta Prohm, archaeological evidence suggests no habitation or use of the temple following the 14th century CE (Carter et al., 2018). Some temples, such as the Baphuon, were heavily modified in the 15th century CE, indicating a significant population's presence to undertake these changes (Leroy et al., 2015). Other archaeological and art historical studies have demonstrated continued habitation around Angkor (Brotherson, 2019; Castillo et al., 2018; Polkinghorne et al., 2018). Recently, Fletcher et al. (2017) have proposed a population of approximately 300,000 adults at Angkor by the early 14th century CE. We are currently unable to model population decline in Greater Angkor more accurately, as this will require careful archaeological excavation. Although there was a significant depopulation, this region was not abandoned or forgotten.

## **5. Conclusions**

To summarize, several salient trends characterize the Angkor case study. The first involves initial nucleation in the urban core (Period 1) with three major population centers and a population density of 13–16p/ha. This was followed by a rapid AMA expansion in Period 2, which quadrupled the population in this zone. Angkor's total population during this period was approaching half a million people, depending on the density of habitation on the BANKs. Angkor's AMA always housed more people than its urban civic-ceremonial core. Such demographic imbalance coincided with the construction of new temple-based communities in the capital and the expansion of the city's water management network to include more of the metropolitan region. The AMA temple communities took advantage of this top-down state-sponsored infrastructure and relied on their own bottom-up management strategies (Klassen and Evans, 2020). Interestingly, social constraints regarding land sales and a reduction of tax immunities on temple foundations (especially 10th through early 12th century CE taxation) seems to have slowed the growth of the AMA beginning in the 11th century CE, as land in these regions was increasingly consolidated into the hands of elites. It is also likely that environmental factors and the landscape's carrying capacity limited settlement expansion (Hawken, 2013; Lustig, 2001; Pottier, 2000b).

Overall population growth in both the AMA and CCC was slow during the 12th century CE, but our model supports conventional Angkorian scholarship in placing Angkor's apogee (*sensu* Feinman and Carballo, 2019) during Period 5 in the late 12th to early 14th centuries CE when at least 688,000 and perhaps as many as 900,000 lived in the Greater Angkor Region. Jayavarman VII's reign seems to have spurred a significant increase in population density in the CCC. Major works in the polity's capital included a series of state temples and the walled enclosure of Angkor Thom under Jayavarman VII. However, in the period after Jayavarman VII's death, elites likely began to abandon the CCC, prompting



socio-political, religious, and environmental changes that reduced population across much of the Greater Angkor region, although the exact scale of this is currently unknown.

This study makes several contributions to our understandings to the growth of agro-urban centers and urbanism more broadly. Firstly, the Angkorian case study suggests centralized state control is not a necessary determinant for urban expansion. On the one hand, the development and increased density of Angkor's civic-ceremonial zone were shaped by Angkorian rulers and their entourages, both through intentional acts like state projects and unintended consequences like the growth of an elite "middle class" (Fletcher, 2019; Smith, 2018). Developments in the AMA, in contrast, involved local decision-making and governance and did not simply reflect exploitation by capital elites (e.g., Abrams, 1995; Klassen and Evans 2020; Hirth, 2013; Small, 2006; Steinkeller, 2007; Taylor, 2013). Aspects of Angkor's political economy are similarly heterogeneous. The production of stoneware ceramics was relatively decentralized and use of these ceramics was widespread across the Angkor empire (Grave et al., 2021; Grave et al., 2017). However, the production and use of objects associated with temples such as decorative lintels, bronze statues, and even the iron used in the construction of temples, was more centralized and under state control (Hendrickson and Leroy, 2020; Polkinghorne, 2013; Polkinghorne et al., 2014; Polkinghorne et al., 2015).

Secondly our work shows that both agrarian potential and individual ruler policies may limit urban size and configuration. Until the late 12th century, Angkor's growth stayed within the carrying capacity of the landscape. Even then, the upper range of our population estimate during this period (approx. 900,000 people) is based on intensive habitation on the embankments, which is thus far untested. However, the growth of Angkor over time was "pushed" by the activities of particular rulers who expanded Angkor's borders and infrastructure. This resulted in variable growth in the CCC and AMA over time. The relationship between the CCC and AMA communities was likely a critical factor in Angkor's urban longevity. As has been noted for other agro-urban settlements, the CCC's integration with the AMA and BANKs zones could have allowed for access to diverse ecological resources leading to urban sustainability; recent work has pointed out that "the Khmer did not live on rice alone" (Castillo et al. 2020; see also Castillo et al. 2018; Scarborough and Isendahl 2020). A ritual economy linking the AMA temple communities with those in the core may have also facilitated Angkor's long-term sustainability. Work at Teotihuacan, for example, has suggested that public rituals were key to maintaining long-term unity within the multicultural population (Filini, 2015). We expect that people in AMA communities likely came into the CCC to participate in ritual festivals and royal performances (Stark, 2015). Migration was an important component of ancient urbanism (Smith, 2014a; Smith, 2014b; Storey, 2006). As noted earlier, temple inscriptions suggest that some smaller temples had cyclical labor forces. Could similar workgroups be moving into and out of the state temples within Angkor's CCC? Future studies could estimate, for example, the labor needed to expand Jayavarman VII's CCC (see Kim, 2013; Smailes, 2011). Such work might also shed light on how Angkorians crafted their shared identity and how AMA communities may have been integrated into or resisted the Angkorian state (e.g., Buell, 2014; Smith, 2003; Yaeger, 2000).

Angkor's massive settlement complex was neither an accident nor entirely planned, but it was certainly created (Cowgill, 2004: 535). That Angkor was able to maintain its dominance for hundreds of years also testifies to the sustainability and stability of this urban form (Klassen and Evans, 2020; Scarborough and Isendahl, 2020; Stark, 2019). As discussed above, multiple factors influence the development of agro-urban settlements. This fine-grained analysis allows us to see more clearly how and when these factors facilitated the development of the Greater Angkor region. While many of these took place within a local historical context, we argue that future comparative studies might observe similar patterns.

## **CRedit authorship contribution statement**

Alison Kyra Carter: Conceptualization, Methodology, Investigation, Writing - original draft, Writing - review & editing. Sarah Klassen: Conceptualization, Methodology, Investigation, Writing - original draft, Writing - review & editing, Visualization. Miriam T. Stark: Investigation, Writing - review & editing. Martin Polkinghorne: Investigation, Writing - review & editing. Piphai Heng: Investigation, Writing - review & editing. Damian Evans: Investigation, Writing - review & editing. Rachna Chhay: Investigation, Writing - review & editing.

## **Acknowledgements**

The Authors thank the APSARA National Authority for their permission to conduct remote sensing and field investigations. Thanks also to Roland Fletcher for his support. Thank you to Terry and Eileen Lustig for their comments and suggestions on aspects of economic geography and Michael E. Smith for reading and offering comments on an earlier draft of this paper. Thanks to Malay So and Maryne Dana for administrative support.

## **Funding**

Research, planning, and writing of this manuscript was undertaken with the support of the University of Oregon Global Oregon Faculty Collaboration Fund supported by the Global Studies Institute in the UO Office of International Affairs. Data collection for parts of the research in this study have been funded by: the National Geographic Society Committee for Research and Exploration under Grant 9602-14; Dumbarton Oaks under a Project Grant in Garden and Landscape Studies; the Social Sciences and Humanities Research Council of Canada Postdoctoral Fellowship; the National Science Foundation Doctoral Dissertation Research Improvement Awards (#1638137); Australian Research Council Discovery Early Career Researcher Award (DE150100756) and Council Discovery Grant (DP170102574); and the European Research Council (ERC) under the European Union's Horizon 2020 research and innovation programme (grant agreements 639828 and 866454).

## **References**

- Abrams, E.M., 1995. A model of fluctuating labor value and the establishment of state power: An application to the Prehispanic Maya. *Latin Am. Antiquity* 6, 196–213.
- Acker, B., 2012. Mysteries of Angkor revealed: Hydrology and the siting of Angkor. In: Haendel, A. (Ed.), *Old Myths and New Approaches, Interpreting Ancient Religious Sites in Southeast Asia*. Monash University Publishing, Clayton, Victoria, pp. 28–41.
- Acker, R., 1998. New geographical tests of the hydraulic thesis at Angkor. *South East Asia Res.* 6, 5–47.
- Alonso, W., 1964. *Location and Land Use: Toward a General Theory of Land Rent*. Harvard University Press, Cambridge, MA.
- Bâty, P., 2010. Les fouilles de l'aéroport de Siem Reap à Angkor. *Archéopages Hors-série* 2, 86–93.
- Bâty, P., Desbat, A., Sellami, F., Marquié, S., 2014. Le tertre E à Trapeang Ropou Approche archéologique et géomorphologique d'un habitat angkorien. *Aséanie* 33, 331–387.
- Bergaigne, A.M., 1893. *Inscriptions sanscrites de Campā et du Cambodge*. Imprimerie Nationale, Paris.
- Boisselier, J., 1952. Ben Mala et la chronologie des monuments du style d'Ankor Vat. *Bulletin de l'École française d'Extrême-Orient* 46 (1), 187–226.
- Briggs, L.P., 1951. *The Ancient Khmer Empire*. American Philosophical Society, Philadelphia.
- Brotherson, D., 2019. *Commerce, the Capital, & Community. Trade Ceramics, Settlement Patterns, & Continuity Throughout the Demise of Angkor* (PhD Thesis). University of Sydney, Sydney.
- Bruelckner, J.K., 1987. The structure of urban equilibria: A unified treatment of the Muth-Mills model. In: Mills, E.S. (Ed.), *Handbook of Regional and Urban Economics. Volume 2: Urban Economics*. North-Holland, Amsterdam, pp. 821–845.

- Buckley, B.M., Anchukaitis, K.J., Penny, D., Fletcher, R., Cook, E.R., Sano, M., Nam, L.C., Wichienkeo, A., Minh, T.T., Hong, T.M., 2010. Climate as a contributing factor in the demise of Angkor, Cambodia. *Proc. Natl. Acad. Sci.* 107, 6748–6752.
- Buckley, Brendan M., Fletcher, Roland, Wang, Shi-Yu Simon, Zottoli, Brian, Pottier, Christophe, 2014. Monsoon extremes and society over the past millennium on mainland Southeast Asia. *Quat. Sci. Rev.* 95, 1–19. <https://doi.org/10.1016/j.quascirev.2014.04.022>.
- Buell, M.D., 2014. The rise of a Minoan City and the (re)structuring of its hinterlands: A view from Galatas. In: Creekmore, A.T., Fisher, K.D. (Eds.), *Making Ancient Cities: Space and Place in Early Urban Societies*. Cambridge University Press, New York, pp. 257–291.
- Carter, A.K., Stark, M., Heng, P., Chhay, R., 2021. The Angkorian House. In: Evans, D., Stark, M., Hendrickson, M. (Eds.), *The Angkorian World*. Routledge, London (submitted for publication).
- Carter, A.K., Stark, M.T., Quintus, S., Zhuang, Y., Wang, H., Heng, P., Chhay, R., 2019. Temple occupation and the tempo of collapse at Angkor Wat, Cambodia. *Proc. Natl. Acad. Sci.* 116, 12226–12231.
- Carter, A.K., Heng, P., Stark, M.T., Chhay, R., Evans, D.H., 2018. Urbanism and Residential Patterning in Angkor. *J. Field Archaeol.* 43, 492–506.
- Castillo, C.C., Carter, A., Kingwell-Banham, E., Zhuang, Y., Weisskopf, A., Chhay, R., Heng, P., Fuller, D.Q., Stark, M., 2020. The Khmer did not live by rice alone: Archaeobotanical investigations at Angkor Wat and Ta Prohm. *Archaeol. Res. Asi* 24, 100213.
- Castillo, C.C., Polkinghorne, M., Vincent, B., Suy, T.B., Fuller, D.Q., 2018. Life goes on: Archaeobotanical investigations of diet and ritual at Angkor Thom, Cambodia (14th–15th centuries CE). *The Holocene* 28, 930–944.
- Chamberlain, A., 2006. *Demography in Archaeology*. Cambridge University Press, Cambridge.
- Chapman, John, Gaydarska, Bissierka, 2016a. Low-Density Urbanism: The Case of the Trypillia Group of Ukraine. In: Fern´andez-G´otz, Manuel, Krause, Dirk (Eds.), *Eurasia at the Dawn of History: Urbanization and Social Change*. Cambridge University Press, Cambridge, pp. 81–105. <https://doi.org/10.1017/9781316550328.006>.
- Chapman, J., Gaydarska, B., 2016b. Low-density agrarian mega-cities: From past to present. In: Müller, J., Rassmann, K., Videiko, M. (Eds.), *Trypillia Mega-Sites and European Prehistory 4100–3400 BCE*. Routledge, New York, pp. 289–300.
- Chase, A.F., Chase, D.Z., 2016. Urbanism and anthropogenic landscapes. *Annu. Rev. Anthropol.* 45, 361–376.
- Chase, A.S.Z., 2016. Beyond elite control: residential reservoirs at Caracol, Belize. *WIREs Water* 3, 885–897.
- Chevance, J.-B., Evans, D., Hofer, N., Sakhoeun, S., Chhean, R., 2019. Mahendraparvata: an early Angkor-period capital defined through airborne laser scanning at Phnom Kulen. *Antiquity* 93, 1303–1321.
- Coe, M.D., Evans, D., 2018. *Angkor and the Khmer Civilization, Second Edition*. Thames & Hudson, New York.
- Cœdès, G., 1906. La stèle de Ta-Prohm. *Bulletin de l'École française d'Extrême-Orient* 6, 44–86.
- Cœdès, G., 1909. L'Inscription de Baksei Camkron. *J. Asiatique* 467–502.
- Cœdès, G., 1932. A la recherche du Yaçodharaçrama. *Bulletin de l'École française d'Extrême-Orient* 32, 84–112.
- Cœdès, G., 1937. *Inscriptions du Cambodge, Vol III*. Editions de Boccard, Paris.
- Cœdès, G., 1941. La stèle de Pr´ah Khan d'Angkor. *Bulletin de l'École française d'Extrême-Orient* 41, 255–302.
- Cœdès, G., 1943. *Pour mieux comprendre Angkor*. Imprimerie d'Extrême-Orient, Hanoi.
- Cœdès, G., 1968. *The Indianized States of Southeast Asia, third ed.* The University of Hawaii Press, Honolulu.

- Cœdès, George, Dupont, Pierre, 1943. Les Stèles de Sdok Kak Thom, Phnom Dandak, et Prah Vihar. *Bulletin de l'École française d'Extrême-Orient* 43, 56–154.
- Coningham, R., Gunawardhana, P., Manuel, M., Adikari, G., Katugampola, M., Young, R., Schmidt, A., Krishnan, K., Simpson, I., McDonnell, G., Batt, C., 2007. The state of theocracy: defining an early medieval hinterland in Sri Lanka. *Antiquity* 81, 688–719.
- Cowgill, G.L., 2004. Origins and Development of Urbanism: Archaeological Perspectives. *Annu. Rev. Anthropol.* 33, 525–5449.
- D'Altroy, T., Earle, T., 1985. Staple finance, wealth finance and storage in the inka political economy. *Curr. Anthropol.* 26, 187–206.
- David, N., 1971. The Fulani Compound and the Archaeologist. *World Archaeol.* 3, 111–131.
- Delvert, J., 1961. *Le paysan cambodgien*. Mouton & Co, Paris.
- Diamond, J., 2011. *Collapse: How Societies Choose to Fail or Succeed*, revised ed. Penguin Books, New York.
- Dumarçay, J., Royere, P., 2001. *Cambodian Architecture: Eighth to Thirteenth Centuries*. Brill, Leiden.
- Ebihara, M., 2018. *Svay. A Khmer Village in Cambodia*. Southeast Asia Program Publications, Ithaca.
- Ebihara, M., 1977. Residence patterns in a Khmer Peasant Village. *Ann. N. Y. Acad. Sci.* 293, 51–68.
- Evans, C., Chang, N., Shimizu, N., 2016. Sites, survey, and ceramics: Settlement patterns of the first to ninth centuries CE in the Upper Mun River Valley, northeast Thailand. *J. Southeast Asian Stud.* 47 (03), 438–467. <https://doi.org/10.1017/s0022463416000278>.
- Evans, D., 2007. Putting Angkor on the map: a new survey of a Khmer 'Hydraulic City' in historical and theoretical context (PhD thesis). University of Sydney, Sydney.
- Evans, D., 2010-2011. The archaeological landscape of Koh Ker, northwest Cambodia. *Bulletin de l'École française d'Extrême-Orient*, pp. 91–150.
- Evans, D., 2016. Airborne laser scanning as a method for exploring long-term socioecological dynamics in Cambodia. *J. Archaeol. Sci.* 74, 164–175.
- Evans, D., Fletcher, R., 2015. The landscape of Angkor Wat redefined. *Antiquity* 89, 1402–1419.
- Evans, D.H., Fletcher, R.J., Pottier, C., Chevance, J.-B., Soutif, D., Tan, B.S., Im, S., Ea, D., Tin, T., Kim, S., Cromarty, C., De Greef, S., Hanus, K., Bâty, P., Kuszinger, R., Shimoda, I., Boornazian, G., 2013. Uncovering archaeological landscapes at Angkor using lidar. *Proc. Natl. Acad. Sci.* 110, 12595–12600.
- Evans, D.H., Pottier, C., Fletcher, R., Hensley, S., Tapley, I., Milne, A., Barbetti, M., 2007. A comprehensive archaeological map of the world's largest preindustrial settlement complex at Angkor, Cambodia. *Proc. Natl. Acad. Sci.* 104, 14277–14282.
- Feinman, G.M., Carballo, D.M., 2019. The scale, governance, and sustainability of central places in Pre-Hispanic Mesoamerica. In: Lozney, L.R., McGovern, T.H. (Eds.), *Global Perspectives on Long Term Community Resource Management*. Springer Nature Switzerland, Cham, Switzerland, pp. 235–253.
- Filini, A., 2015. Teotihuacan: Ritual economy, exchange, and urbanization processes in classic period mesoamerica. *Econ. Anthropol.* 2 (1), 97–119.
- Finot, L., 1925. Inscriptions d'Ankor. *Bulletin de l'École française d'Extrême-Orient* 25, 289–409.
- Fisher, C., 2014. The role of infield agriculture in Maya cities. *J. Anthropol. Archaeol.* 36, 196–210.
- Fletcher, R., 1995. *The Limits of Settlement Growth: A Theoretical Outline*. Cambridge University Press, Cambridge.
- Fletcher, R., 2009. Low-density, agrarian-based urbanism: A comparative view. *Insights* 2, 2–20.
- Fletcher, R., 2012. Low-density, agrarian-based urbanism: Scale, power and ecology. In: Smith, M.E. (Ed.), *The Comparative Archaeology of Complex Societies*. Cambridge University Press, Cambridge, pp. 285–321.

- Fletcher, R., 2019. Trajectories to low-density settlements past and present: paradox and outcomes. *Front. Digital Human.* 6 <https://doi.org/10.3389/fdigh.2019.00014>.
- Fletcher, R.J., Barbetti, M., Evans, D., Than, H., Sokrithy, I., Chan, K., Penny, D., Pottier, C., Somaneath, T., 2003. Redefining Angkor: Structure and environment in the largest, low density urban complex of the pre-industrial world. *Udaya. J. Khmer Stud.* 4, 107–121.
- Fletcher, R., Buckley, B., Pottier, C., Wang, S.-Y.S., 2017. Fourteenth to sixteenth centuries AD. The case of Angkor and monsoon extremes in Mainland Southeast Asia. In: Weiss, H. (Ed.), *Megadrought and Collapse: From Early Agriculture to Angkor*. Oxford University Press, Oxford, pp. 275–314.
- Fletcher, R., Evans, D., 2012. The dynamics of Angkor and its landscape. In: Haendel, A. (Ed.), *Old Myths and New Approaches: Interpreting Ancient Religious Sites in Southeast Asia*. Monash University Publishing, Clayton, Victoria, pp. 42–62.
- Fletcher, R., Penny, D., Evans, D., Pottier, C., Barbetti, M., Kummu, M., Lustig, T., 2008a. The water management network of Angkor, Cambodia. *Antiquity* 82, 658–670.
- Fletcher, R., Pottier, C., Evans, D., Kummu, M., 2008b. The development of the water management system of Angkor: A provisional model. *Bull. Indo-Pac. Prehist. Assoc.* 28, 57–66.
- Fletcher, R., Pottier, C., 2021. Angkor: a provisional map history of Greater Angkor from ancestry to transformation. In: Higham, C., Kim, N.C. (Eds.), *The Oxford Handbook of Southeast Asian Archaeology*. Oxford University Press, Oxford (submitted for publication).
- Fletcher, R., White, K., 2018. Tropical environments and trajectories to low-density settlement forms. In: Sanz, N. (Ed.), *Exploring Frameworks for Tropical Forest Conservation: Integrating Natural and Cultural Diversity for Sustainability: A Global Perspective*. UNESCO, Mexico City, pp. 92–115.
- Gaucher, J., 2004. Angkor Thom, une utopie réalisée? Structuration de l'espace et modèle indien d'urbanisme dans le Cambodge ancien. *Arts asiatiques* 59, 58–86.
- Gaucher, J., 2010. Angkor, histoire urbaine et archéologie. In: Dagens, B. (Ed.), *Archéologues à Angkor*. Archives archéologiques de l'Ecole française d'Extrême-Orient, Paris, pp. 53–57.
- Gaucher, J., 2017. L'enceinte d'Angkor Thom: archéologie d'une forme et chronologie d'une ville. In: Beschaouch, A., Verellen, F., Zink, M. (Eds.), *Deux décennies de coopération archéologique franco-cambodgienne à Angkor*. Académie des Inscriptions et Belles-Lettres, Paris, pp. 27–41.
- Gaucher, J., Husi, P., 2013. L'archéologie urbaine appliquée à un site archéologique: l'exemple d'Angkor Thom (Cambodge), capitale du royaume khmer angkorien. In: Lorans, E., Rodier, X. (Eds.), *Archéologie de l'espace urbain*. Presses universitaires François-Rabelais, Tours. <https://doi.org/10.4000/books.pufr.7610>.
- Gilliland, K., Simpson, I.A., Adderley, W.P., Burbidge, C.I., Cresswell, A.J., Sanderson, D. C.W., Coningham, R.A.E., Manuel, M., Strickland, K., Gunawardhana, P., 2013. The dry tank: Development and disuse of water management infrastructure in the Anuradhapura Hinterland, Sri Lanka. *J. Archaeol. Sci.* 40, 1012–1028.
- Graham, E., 1996. Maya cities and the character of a tropical urbanism. In: Sinclair, P. (Ed.), *The Development of Urbanism from a Global Perspective*. Uppsala University, Uppsala, Sweden.
- Graham, E., Isendahl, C., 2018. Neotropical cities as agro-urban landscapes: Revisiting 'Low-density, agrarian-based urbanism'. In: Ekblom, A., Isendahl, C., Lindholm, K.-J. (Eds.), *The Resilience of Heritage: Cultivating a Future of the Past: Essays in Honour of Professor Paul J.J. Sinclair*. Uppsala University Press, Uppsala, Sweden, pp. 165–180.
- Grave, P., Stark, M., Ea, D., Kealhofer, L., Tan, B.S., Tin, T., 2017. Differentiating khmer stoneware production: An NAA pilot study from Siem Reap Province, Cambodia. *Archaeometry* 59, 13–24.
- Grave, P., Kealhofer, L., Phon, K., Heng, P., Stark, M.T., Marsh, B., Ea, D., Chhay, R., Marriner, G.P., 2021. Centralized power/decentralized production? Angkorian stoneware and the southern

- production complex of Cheung Ek, Cambodia. *J. Archaeol. Sci.* 125, 105270. <https://doi.org/10.1016/j.jas.2020.105270>.
- Groslier, B.P., 1973. *Inscriptions du Bayon*. EFEO (Mémoire archéologique no. 3, vol. 2), Paris.
- Groslier, B.P., 1979. VII. La cité hydraulique angkoriennne: exploitation ou surexploitation du sol? *Bulletin de l'École française d'Extrême-Orient* 66, 161–202.
- Hall, T., Penny, D., Hamilton, R., 2018. Re-evaluating the occupation history of Koh Ker, Cambodia, during the Angkor period: A palaeo-ecological approach. *PLoS ONE* 13, e0203962.
- Hall, T., Penny, D., Vincent, B., Pokinghorne, M., 2021. An integrated palaeoenvironmental record of Early Modern occupancy and land use within Angkor Thom, Angkor. *Quat. Sci. Rev.* 251 <https://doi.org/10.1016/j.quascirev.2020.106710>.
- Hanson, J.W., Ortman, S.G., 2017. A systematic method for estimating the populations of Greek and Roman settlements. *J. Roman Archaeol.* 30, 301–324.
- Hanus, K., Evans, D., 2016. Imaging the waters of Angkor: A method for semi-automated pond extraction from LiDAR data. *Archaeol. Prospect.* 23, 87–94.
- Hassan, F.A., 1978. Demographic archaeology. *Adv. Archaeol. Method Theory* 1, 49–103.
- Hawixbrock, C., 1998. Jayavarman VII ou le renouveau d'Angkor entre tradition et modernité. *Bulletin de l'École française d'Extrême-Orient* 85, 63–85.
- Hawken, S., 2013. Designs of kings and farmers: Landscape systems of the greater Angkor urban complex. *Asian Perspect.* 52, 347–367.
- Hawken, S., Castillo, C.C., 2021. Angkor's Agrarian Economy: A Socio-Ecological Mosaic. In: Evans, D., Stark, Miriam T., Hendrickson, Mitch (Eds.), *The Angkorian World*. Routledge, London (submitted for publication).
- Hendrickson, M., 2008. *Arteries of Empire: An operational study of transport and communication in Angkorian Southeast Asia (9th to 15th centuries CE)* (PhD Thesis). University of Sydney, Sydney.
- Hendrickson, M., 2010. Historic routes to Angkor: Development of the Khmer Road System (Ninth to Thirteenth Centuries AD) in Mainland Southeast Asia. *Antiquity* 84, 480–496.
- Hendrickson, M., Leroy, S., 2020. Sparks and needles: Seeking catalysts of state expansions: a case study of technological interaction at Angkor, Cambodia (9th to 13th centuries CE). *J. Anthropol. Archaeol.* 57, 101141.
- Heng, P., Stark, M.T., Carter, A.K., Chhay, R., 2021. Form, structure, and long-term Angkorian urbanism: A view from the Kok Phnov Site (9-15th centuries CE). *Archaeol. Res. Asia* (submitted for publication).
- Heuveline, P., 2017. Households and family processes. In: Brickell, K., Springer, S. (Eds.), *The Handbook of Contemporary Cambodia*. Routledge, New York, pp. 336–345.
- Hirth, K., 2013. Economic consumption and domestic economy in Cholula's Rural Hinterland, Mexico. *Latin Am. Antiquity* 24, 123–148.
- Inomata, T., Triadan, D., Pinzon, F., Burham, M., Ranchos, J.L., Aoyama, K., Haraguchi, T., 2018. Archaeological application of airborne LiDAR to examine social changes in the Ceibal region of the Maya lowlands. *PLoS ONE* 13, e0191619.
- Isendahl, C., 2012. Agro-urban landscapes: the example of Maya lowland cities. *Antiquity* 86, 1112–1125.
- Isendahl, C., Barthel, S., 2018. Archaeology, history, and urban food security: integrating cross-cultural and long-term perspectives. In: Zeunert, J., Waterman, T. (Eds.), *Routledge Handbook of Landscape and Food*. Routledge, New York, pp. 61–72.
- Isendahl, C., Smith, M.E., 2013. Sustainable agrarian urbanism: The low-density cities of the Mayas and Aztecs. *Cities* 31, 132–143.
- Jacques, C., 1970. IV. Études d'épigraphie cambodgienne. *Bulletin de l'École française d'Extrême-Orient* 57 (1), 57–90.

- Jacques, C., 2005. History of the Phnom Bakheng Monument. In: Chermayeff, J.C. (Ed.), Phnom Bakheng Workshop on Public Interpretation. Center for Khmer Studies, Siem Reap, Cambodia, pp. 23–40.
- Jacques, C., Lafond, P., 2007. The Khmer Empire: Cities and Sanctuaries from the 5th to the 13th Century. River Books, Bangkok.
- Jones, E.E., DeWitte, S.N., 2012. Using spatial analysis to estimate depopulation for Native American populations in northeastern North America, AD 1616–1645. *J. Anthropol. Archaeol.* 31, 83–92.
- Kalab, M., 1968. Study of a Cambodian Village. *Geogr. J.* 134, 521–537.
- Kepecs, S., Feinman, G.M., Boucher, S., 1994. Chichen itza and its hinterland: A worldsystems perspective. *Ancient Mesoamerica* 5, 141–158.
- Kim, N.C., 2013. Lasting monuments and durable institutions: Labor, urbanism, and statehood in Northern Vietnam and beyond. *J. Archaeol. Res.* 21 (3), 217–267.
- Klassen, S., Ortman, S., Lobo, J., Evans, D., 2021. Increasing returns to agricultural intensification at Angkor, Cambodia. Under review with *J. Archaeol. Method Theory* (submitted for publication).
- Klassen, S., Carter, A.K., Evans, D., Ortman, S.G., Stark, M.T., Loyless, A.A., Polkinghorne, M., Heng, P., Hill, M., Wijker, P., Niles-Weed, J., Marriner, G.P., Pottier, C., Fletcher, R., 2021. Diachronic modeling of the population within the medieval Greater Angkor Region settlement complex. *Sci. Adv.* 7 (19), eabf8441. <https://doi.org/10.1126/sciadv.abf8441>.
- Klassen, S., Evans, D., 2020. Top-down and bottom-up water management: A diachronic model of changing water management strategies at Angkor, Cambodia. *J. Anthropol. Archaeol.* 58, 101166. <https://doi.org/10.1016/j.jaa.2020.101166>.
- Klassen, S., Weed, J., Evans, D., 2018. Semi-supervised machine learning approaches for predicting the chronology of archaeological sites: A case study of temples from medieval Angkor, Cambodia. *PLoS ONE* 13, e0205649.
- Kohler, T.A., Bocinsky, R.K., Cockburn, D., Crabtree, S.A., Varien, M.D., Kolm, K.E., Smith, S., Ortman, S.G., Kobti, Z., 2012. Modelling prehispanic Pueblo societies in their ecosystems. *Ecol. Model.* 241, 30–41.
- Kolb, C.C., 1985. Demographic estimates in archaeology: Contributions from ethnoarchaeology on mesoamerican peasants. *Curr. Anthropol.* 26, 581–599.
- Kowalewski, S.A., 2003. Scale and the explanation of demographic change: 3,500 years in the Valley of Oaxaca. *Am. Anthropol.* 105, 313–325.
- Kusimba, C., Kusimba, S.B., Agbaje-Williams, B., 2006. Precolonial African cities: Size and density. In: Storey, G. (Ed.), *Urbanism in the Preindustrial World: Cross-Cultural Approaches*. University of Alabama Press, Tuscaloosa, pp. 145–160.
- Leroy, S., Hendrickson, M., Delqué-Kolic, E., Vega, E., Dillmann, P., 2015. First direct dating for the construction and modification of the Baphuon Temple Mountain in Angkor, Cambodia. *PLoS ONE* 10, e0141052.
- Lucero, L.J., Fletcher, R., Coningham, R., 2015. From ‘Collapse’ to urban diaspora: the transformation of low-density, dispersed agrarian urbanism. *Antiquity* 89, 1139–1154.
- Lustig, E., 2001. Water and the Transformation of Power at Angkor, 10th to 13<sup>th</sup> Centuries A.D. BA Honours Thesis. University of Sydney, Sydney.
- Lustig, E., 2009. Power and Pragmatism in the Political Economy of Angkor, Department of Archaeology (PhD Thesis). University of Sydney, Sydney.
- Lustig, E., 2011. Using inscription data to investigate power in Angkor’s empire. *Aséanie* 27, 35–66.
- Lustig, E., Lustig, T., 2013. New Insights into “les Interminables Listes Nominative d’Esclaves” from Numerical Analyses of the Personnel in Angkorian Inscriptions. *Aséanie* 31, 55–83.
- Lustig, T.L., Lustig, E.J., 2015. Following the non-money trail: Reconciling some Angkorian Temple Accounts. *J. Indo-Pac. Archaeol.* 39, 26–37.

- Lustig, E., Lustig, T., 2019. Losing ground: Decline of Angkor's middle-level officials. *J. Southeast Asian Stud.* 50, 409–430.
- Lustig, E., Cremin, A., Lustig, T., 2021. A view of Angkor's economy. In: Evans, D., Stark, M.T., Hendrickson, M. (Eds.), *The Angkorian World*. Routledge, London (submitted for publication).
- Lustig, T., Fletcher, R., Kumm, M., Pottier, C., Penny, D., 2008. Did traditional cultures live in harmony with nature? Lessons from Angkor, Cambodia. In: Keskinen, M., Varis, O., Kumm, M. (Eds.), *Modern Myths of the Mekong*. Helsinki UT, Helsinki, pp. 81–94.
- Lustig, T., Klassen, S., Evans, D., French, R., Moffat, I., 2018. Evidence for the breakdown of an Angkorian hydraulic system, and its historical implications for understanding the Khmer Empire. *J. Archaeolog. Sci.: Rep.* 17, 195–211.
- Mabbett, I.W., 1978. Kingship in Angkor. *J. Siam Soc.* 66, 1–58.
- Mabbett, I.W., 1983. Some remarks on the present state of knowledge about Slavery in Angkor. In: Reid, A. (Ed.), *Slavery, Bondage and Dependency in Southeast Asia*. University of Queensland Press, Queensland, pp. 44–63.
- Maxwell, T.S., 2007. The stele inscription of Preah Khan, Angkor. *Udaya. J. Khmer Stud.* 8, 1–114.
- McIntosh, R.J., McIntosh, S.K., 2003. Early urban configurations on the Middle Niger: Clustered cities and landscapes of power. In: Smith, M. (Ed.), *The Social Construction of Ancient Cities*. Smithsonian Books, Washington D.C., pp. 103–120.
- McIntosh, S.K., 1999. Floodplains and the development of complex society: Comparative perspectives from the West African Semi-arid Tropics. *Archaeol. Pap. Am. Anthropol. Assoc.* 9, 151–165.
- Milner, G.R., Wood, J.W., Boldsen, J.L., 2019. Paleodemography: Problems, progress, and potential. In: Katzenberg, M.A., Grauer, A.L. (Eds.), *Biological Anthropology of the Human Skeleton*, third ed. John Wiley & Sons, Oxford, pp. 593–633.
- Moffat, I., Klassen, S., Attorre, T., Evans, D., Lustig, T., Kong, L., 2020. Using ground penetrating radar to understand the failure of the Koh Ker Reservoir, Northern Cambodia. *Geoarchaeology* 35, 63–71.
- Moore, T., 2017. Beyond iron age 'Towns': Examining Oppida as examples of low-density urbanism. *Oxf. J. Archaeol.* 36, 287–305.
- Mus, P., 1961. Le sourire d'Angkor. *Art, foi et politique bouddhiques sous Jayavarman VII*. *Artibus Asiae* 24, 363–381.
- Narroll, R., 1962. Floor area and settlement population. *Am. Antiq.* 27, 587–589.
- Nelson, N.C., 1909. Shellmounds of the San Francisco Bay region. *Univ. California Publ. Am. Archaeol. Ethnol.* 7, 309–356.
- Nesbitt, H.J., 1997. *Rice Production in Cambodia*. International Rice Research Institute, Manila.
- O'Reilly, D., Shewan, L., Domett, K., Sopheap, A., 2020. Revisiting Prei Khmeng: The excavation of an iron age settlement and cemetery in Cambodia. *Asian Perspect.* 59, 33–60.
- Penny, D., 2006. The Holocene history and development of the Tonle Sap, Cambodia. *Quat. Sci. Rev.* 25, 310–322.
- Penny, D., Hall, T., Evans, D., Polkinghorne, M., 2019. Geoarchaeological evidence from Angkor, Cambodia, reveals a gradual decline rather than a catastrophic 15th-century collapse. *Proc. Natl. Acad. Sci.* 116, 4871–4876.
- Penny, D., Chevance, J.-B., Tang, D., De Greef, S., 2014. The environmental impact of Cambodia's Ancient City of Mahendraparvata (Phnom Kulen). *PLoS ONE* 9, 1–9.
- Penny, D., Pottier, C., Fletcher, R., Barbetti, M., Fink, D., Hua, Q., 2006. Vegetation and land-use at Angkor, Cambodia: a dated pollen sequence from the Bakong temple moat. *Antiquity* 80, 559–614.
- Penny, D., Zachreson, C., Fletcher, R., Lau, D., Lizier, J.T., Fischer, N., Evans, D.,



- Pottier, C., Prokopenko, M., 2018. The demise of Angkor: Systemic vulnerability of urban infrastructure to climatic variations. *Sci. Adv.* 4, eaau4029. <https://doi.org/10.1126/sciadv.aau4029>.
- Polkinghorne, M., 2007. *Makers and Models: Decorative Lintels of Khmer Temples, 7<sup>th</sup> to 11<sup>th</sup> Centuries* (PhD Thesis). University of Sydney, Sydney.
- Polkinghorne, M., 2013. Decorative Lintels and Ateliers at Mahendraparvata and Hariharālaya. In: Klokke, M.J., Degroot, V. (Eds.), *Materializing Southeast Asia: Selected Papers from the 12th International Conference of the European Association of Southeast Asian Archaeologists*, Volume 2. NUS Press, Singapore, pp. 205–217.
- Polkinghorne, M., 2018. Reconfiguring kingdoms: The end of Angkor and the emergence of Early Modern period Cambodia. In: McCullough, T., Murphy, S., Baptiste, P., Zephir, T. (Eds.), *Angkor: Exploring Cambodia's Sacred City*. Asian Civilizations Museum, Singapore, pp. 253–271.
- Polkinghorne, M., 2021. 17th and 18th century images of the Buddha from Ayutthaya and Lan Xang at Angkor Wat. In: Thompson, A. (Ed.), *Early Theravadin Cambodia: Art Historical and Archaeological Perspectives*. NUS Press, Singapore (submitted for publication).
- Polkinghorne, M., Pottier, C., Fischer, C., 2018. Evidence for the 15th century Ayutthayan occupation of Angkor. In: *The Renaissance Princess Lectures In Honour of Her Royal Highness Princess Maha Chakri Sirindhorn on Her Fifth Cycle Anniversary*. The Siam Society, Bangkok, pp. 99–132.
- Polkinghorne, M., Sato, Y., 2021. Early Modern Cambodia and Archaeology at Longvek. In: Evans, D., Stark, M.T., Hendrickson, M. (Eds.), *The Angkorian World*. Routledge, London (submitted for publication).
- Polkinghorne, M., Vincent, B., Thomas, N., Bourgarit, D., 2014. Casting for the King: The Royal Palace bronze workshop of Angkor Thom. *Bulletin de l'École française d'Extrême-Orient* 100, 327–358.
- Polkinghorne, M., Douglas, J.G., Caro, F., 2015. Carving at the Capital: A stone workshop at Hariharālaya, Angkor. *Bulletin de l'École française d'Extrême-Orient* 101, 55–90.
- Pottier, C., 1999. *Carte archéologique de la région d'Angkor Zone Sud* (PhD Thesis). Université Paris III—Sorbonne Nouvelle, Paris.
- Pottier, C., 2000a. `A la recherche de Goloupura. *Bulletin de l'École française d'Extrême-Orient* 87, 79–107.
- Pottier, C., 2000b. Some Evidence of an Inter-relationship between Hydraulic Features and Rice Field Patterns at Angkor during Ancient Times. *J. Sophia Asian Stud.* 18, 99–119.
- Pottier, C., 2001. *Prei Khmeng: Synthèse et phasage du tertre*. Mission Archéologique Franco-Khmère sur L'Aménagement du Territoire Angkorien (MAFKATA). Rapport Préliminaire Sur La Campagne de Fouilles 2001. APSARA-MAE-EFEO, Siem Reap, Cambodia, pp. 49–61.
- Pottier, C., 2006a. Early urban settlements in Angkor. In: ReEAReEA (Ed.), *Reassessing East Asia in the Light of Urban and Architectural History*. International Conference on East Asian Architectural Culture, Kyoto, pp. 133–140.
- Pottier, C., 2006b. Under the western baray waters. In: Bacus, E., Glover, I.C., Pigott, V.C. (Eds.), *Uncovering Southeast Asia's Past: Selected Papers from the 10th International Conference the European Association of Southeast Asian Archaeologists*. NUS Press, Singapore, pp. 298–309.
- Pottier, C., 2012. Beyond the temples: Angkor and its territory. In: Haendel, A. (Ed.), *Old Myths and New Approaches. Interpreting Ancient Religious Sites in Southeast Asia*. Monash University Publishing, Clayton, Victoria, pp. 12–27.
- Pottier, C., 2017. Nouvelles données sur les premières cités angkoriennes. In: Beschaouch, A., Verellen, F., Zink, M. (Eds.), *Deux décennies de coopération archéologique franco-cambodgienne à Angkor*. Académie des Inscriptions et Belles-Lettres, Paris, pp. 43–80.
- Pottier, C., Bolle, A., 2009. Le Prasat Trapeang Phong a Hariharalaya: histoire d'un temple et archéologie d'un site. *Aséanie* 24, 61–90.

- Pottier, C., Bolle, A., Soutif, D., Tan, C., Chevance, J.B., Kong, V., Chea, S., Sang, S., Demeter, F., Bacon, A.-M., Bouchet, N., Souday, C., Frelat, M., 2005. Mission Archéologique Franco-Khmère sur l'Aménagement du Territoire Angkorien (MAFKATA): Campagne 2005 Rapport. APSARA-MAE-EFEO, Siem Reap.
- Pottier, C., Bolle, A., Dupoizat, M.-F., Frelat, M., Soutif, D., Chevance, J.B., Kong, V., Phon, C.K., Phoeng, D., Vierstraete, A., Bruneau, E., Chmielczyk, K., 2007. Mission Archéologique Franco-Khmère sur l'Aménagement du Territoire Angkorien (MAFKATA): Campagne 2007 Rapport. APSARA-MAE-EFEO, Siem Reap.
- Pottier, C., Bolle, A., Chea, S., Dupoizat, M.-F., Phoeng, D., Phon, C.K., Farago, B., Frelat, M., Vierstraete, A., Bruneau, E., Taing, M., Godin, A., Guerin, A., 2008. Mission Archéologique Franco-Khmère sur l'Aménagement du Territoire Angkorien (MAFKATA): Campagne 2008 Rapport. APSARA-MAE-EFEO, Siem Reap.
- Pottier, C., Bolle, A., Desbat, A., Chea, S., Dupoizat, M.-F., Vierstraete, A., Beuken, A., Bruneau, E., Penny, D., 2009. Mission Archéologique Franco-Khmère sur l'Aménagement du Territoire Angkorien (MAFKATA): Campagne 2009 Rapport. APSARA-MAE-EFEO, Siem Reap.
- Pottier, C., Chhem, R.K., 2008. 'A La Découverte D'un H<sup>^</sup>opital Angkorien: Résultats Préliminaires D'une Campagne Archéologique Au Prasat Tromoung, Udaya. *J. Khmer Stud.* 9, 169–182.
- Pottier, C., Guerin, A., Heng, T., Sokrithy, I., Khieu, C., Llopis, E., 2001a. Mission Archéologique Franco-Khmère sur l'Aménagement du Territoire Angkorien (MAFKATA). Rapport sur la campagne de fouilles 2001. APSARA-MAE-EFEO, Siem Reap.
- Pottier, C., Guerin, A., Heng, T., Sokrithy, I., Koy, T., Llopis, E., 2001b. Mission Archéologique Franco-Khmère sur l'Aménagement du Territoire Angkorien (MAFKATA). Rapport sur la campagne de fouilles 2000. APSARA-MAE-EFEO, Siem Reap.
- Pottier, C., Phin, V.S., Heng, T., Chhay, R., Chan, K., Demeter, F., 2004. Koh Ta Meas, un site préhistorique dans le Baray Occidental Rapport Préliminaire. *Udaya. J. Khmer Stud.* 5, 167–191.
- Pottier, C., Soutif, D., 2014. De l'ancienneté de Hariharālaya. Une inscription préangkorienne opportune à Bakong. *Bulletin de l'École française d'Extrême-Orient* 100, 147–166.
- Prak, V., 2006. Wooden houses of the early twentieth century: Settlement patterns, social distinction and ethnicity. In: Tainturier, F., Lalonde, C., Rethy, M. (Eds.), *Wooden Architecture of Cambodia: A Disappearing Heritage*. Center for Khmer Studies, Siem Reap, pp. 66–89.
- Ricklefs, M.C., 1967. Land and the law in the epigraphy of tenth-century Cambodia. *J. Asian Stud.* 26, 411–420.
- Sahai, S., 2012. *The Hindu Temples in South East Asia: Their Role in Social Economic and Political Formations*. Aryan Books, New Delhi.
- Sahai, S., 1977. Territorial administration in ancient Cambodia. *S. East Asian Rev.* 2, 35–50.
- Scarborough, V.L., Isendahl, C., 2020. Distributed urban network systems in the tropical archaeological record: Toward a model for urban sustainability in the era of climate change. *Anthropocene Rev.* 7, 208–230.
- Sedov, L., 1963. On the problem of the economic system in Angkor Cambodia in the IX<sup>th</sup>–XII<sup>th</sup> centuries. *Narody Asii i Afriki, Istoriia, Ekonomika, Kul'tura* 6, 73–81.
- Sedov, L.A., 1978. Angkor: Society and state. In: Claessen, H.J.M., Skalnik, P. (Eds.), *The Early State*. Mouton, The Hague, pp. 111–130.
- Sharrock, P.D., 2009. Garuda, Vajrapāni and religious change in Jayavarman VII's Angkor. *J. Southeast Asian Stud.* 40, 111–151.
- Sharrock, P., 2015. *Banteay Chhmar: Garrison-temple of the Khmer Empire*. River Books, Bangkok.

- Sharrock, P., 2018. Cham-Khmer interactions in 1113–1220 CE. In: Phuong, T.K., Thang, V.V., Sharrock, P. (Eds.), *Vibrancy in Stone: Masterpieces of the Đà Nẵng Museum of Cham Sculpture*. River Books, Bangkok.
- Sharrock, P., Jacques, C., 2017. “The Grief of Kings Is the Suffering of Their Subjects”: A Cambodian King’s twelfth-century network of hospitals. In: Salguero, C.P. (Ed.), *Buddhism and Medicine: An Anthology*. Columbia University Press, New York, pp. 226–232.
- Smailes, R.L., 2011. Building Chan Chan: A project management perspective. *Latin Am. Antiquity* 22, 37–63.
- Small, D.B., 2006. Factoring the countryside into urban populations. In: Storey, G.R. (Ed.), *Urbanism in the Preindustrial World: Cross-Cultural Approaches*. The University of Alabama Press, Tuscaloosa, AL, pp. 317–329.
- Smith, M.E., 2014a. Peasant mobility, local migration, and premodern urbanization. *World Archaeol.* 46, 516–533.
- Smith, M.L., 2003. Early walled cities of the Indian subcontinent as small worlds. In: Smith, M.L. (Ed.), *The Social Construction of Ancient Cities*. Smithsonian Books, Washington D.C., pp. 269–289.
- Smith, M.L., 2014b. The archaeology of urban landscapes. *Annu. Rev. Anthropol.* 43, 307–323.
- Smith, M.L., 2018. Urbanism and the middle class: Co-emergent phenomena in the world’s first cities. *J. Anthropol. Res.* 299–326.
- Sonnemann, T.F., O’Reilly, D., Rachna, C., Fletcher, R., Pottier, C., 2015. The buried ‘Towers’ of Angkor Wat. *Antiquity* 89, 1420–1438.
- Soutif, D., 2009. *Organisation religieuse et profane du temple khmer du VIIème au XIIIème siècle, Linguistique* (PhD Thesis). Université de la Sorbonne nouvelle, Paris.
- Stark, B.L., 2014a. Ancient open space, gardens, and parks: A comparative discussion of mesoamerican urbanism. In: Creekmore, A.T., Fisher, K.D. (Eds.), *Making Ancient Cities: Space and Place in Early Urban Societies*. Cambridge University Press, New York, pp. 370–406.
- Stark, B.L., 2014b. Urban gardens and parks in pre-modern states and empires. *Cambridge Archaeol. J.* 24, 87–115.
- Stark, M.T., 2019. Universal rule and precarious empire: Power and fragility in the Angkorian State. In: Yoffee, N. (Ed.), *The Evolution of Fragility: Setting the Terms*. McDonald Institute for Archaeological Research, Cambridge, pp. 161–182.
- Stark, M.T., 2015. Southeast Asian urbanism: from early city to classical state. In: Yoffee, N. (Ed.), *The Cambridge World History*. Cambridge University Press, Cambridge, pp. 74–93.
- Stark, M.T., 2006a. From Funan to Angkor. Collapse and regeneration in Ancient Cambodia. In: Schwartz, G.M., Nichols, J.J. (Eds.), *After Collapse: The Regeneration of Complex Societies*. The University of Arizona Press, Tucson, pp. 144–167.
- Stark, M.T., 2006b. Pre-Angkorian settlement trends in Cambodia’s Mekong delta and the lower Mekong archaeological project. *Bull. Indo-Pac. Prehist. Assoc.* 26, 98–109.
- Stark, M.T., Evans, D., Rachna, C., Piphai, H., Carter, A., 2015. Residential patterning at Angkor Wat. *Antiquity* 89, 1439–1455.
- Steinkeller, P., 2007. City and countryside in third-millennium southern Babylonia. In: Stone, E.C. (Ed.), *Settlement and Society: Essays Dedicated to Robert McCormick Adams*. Cotsen Institute of Archaeology Press at UCLA, Los Angeles, pp. 185–211.
- Stern, P., 1965. *Les monuments Khmers du style du Bayon et Jayavarman VII*. Presses Universitaires de France, Paris.
- Stone, R., 2009. Divining Angkor. *Natl. Geogr.* 216, 26–55.

- Storey, G.R., 2006. Introduction: Urban demography of the past. In: Storey, G.R. (Ed.), *Urbanism in the Preindustrial World: Cross-Cultural Approaches*. The University of Alabama Press, Tuscaloosa, AL, pp. 1–23.
- Strickland, K.M., Coningham, R., Gunawardhana, P., Simpson, I., 2018. Hydraulic complexities: Collapse and resilience in Sri Lanka. In: Sulas, F., Pikiyai, I. (Eds.), *Water and Society from Ancient Times to the Present: Resilience, Decline, Revival*. Routledge, New York, pp. 259–281.
- Talving-Loza, T., 2020. *Ethnoarchaeology in the Traditional Villages of Bagan, Myanmar: Some Insights for Settlement Archaeology, Anthropology* (MA Thesis). Trent University, Peterborough.
- Taylor, J., 2013. Roman urbanism: A view from the countryside. *Oxf. J. Archaeol.* 32, 413–432.
- Thompson, A., 1997. Changing perspectives: Cambodia after Angkor. In: Jessup, H.I., Zephir, T. (Eds.), *Sculpture of Angkor and Ancient Cambodia: Millennium of Glory*. National Gallery of Art, Washington D.C., pp. 22–32
- Vickery, M., 1985. The Reign of Sūryavarman I and Royal Factionalism at Angkor. *J. Southeast Asian Stud.* 16, 226–244.
- Vickery, M., 2010. Cambodia and its neighbours in the 15th century. In: Wade, G., Laichen, S. (Eds.), *Southeast Asia in the Fifteenth Century: The China Factor*. NUS Press, Singapore, pp. 271–303.
- Vickery, M.T., 1977. *Cambodia after Angkor, the Chronicular Evidence for the fourteenth to sixteenth centuries* (PhD Thesis). Yale University, New Haven.
- Wager, J., 1995. Developing a strategy for the Angkor world heritage site. *Tour. Manage.* 16, 515–523.
- White, A.J., Stevens, L.R., Lorenzi, V., Munoz, S.E., Schroeder, S., Cao, A., Bogdanovich, T., 2019. Fecal stanols show simultaneous flooding and seasonal precipitation change correlate with Cahokia's population decline. *Proc. Natl. Acad. Sci.* 116, 5461–5466.
- Wiessner, P., 1974. A functional estimator of population from floor area. *Am. Antiq.* 39, 343–350.
- Yaeger, J., 2000. The social construction of communities in the classic Maya Countryside: Strategies of affiliation in western Belize. In: Canuto, M.-A., Yaeger, J. (Eds.), *The Archaeology of Communities: A New World Perspective*. Routledge, New York, pp. 123–142.
- Zhou, D., 2007. *A Record of Cambodia: The Land and its People*. Silkorm Books, Chiang Mai.
- Zorn, J.R., 1994. Estimating the population size of ancient settlements: Methods, problems, solutions, and a case study. *Bull. Am. Schools Orient. Res.* 295, 31–48.