



**HAL**  
open science

## **Quality assessment of the MAJA atmospheric correction processor over a farmland area with a new operational in-situ ROSAS station**

J Colin, L Landier, S Coustance, O Hagolle, S Marcq, N Guillemot, A Brut, G Wallois, A Meygret

### ► To cite this version:

J Colin, L Landier, S Coustance, O Hagolle, S Marcq, et al.. Quality assessment of the MAJA atmospheric correction processor over a farmland area with a new operational in-situ ROSAS station. Living Planet Symposium 2022, May 2022, Bonn, Germany. <hal-03685807>

**HAL Id: hal-03685807**

**<https://hal.science/hal-03685807v1>**

Submitted on 2 Jun 2022

HAL is a multi-disciplinary open access archive for the deposit and dissemination of scientific research documents, whether they are published or not. The documents may come from teaching and research institutions in France or abroad, or from public or private research centers.

L'archive ouverte pluridisciplinaire HAL, est destinée au dépôt et à la diffusion de documents scientifiques de niveau recherche, publiés ou non, émanant des établissements d'enseignement et de recherche français ou étrangers, des laboratoires publics ou privés.



HAL Authorization

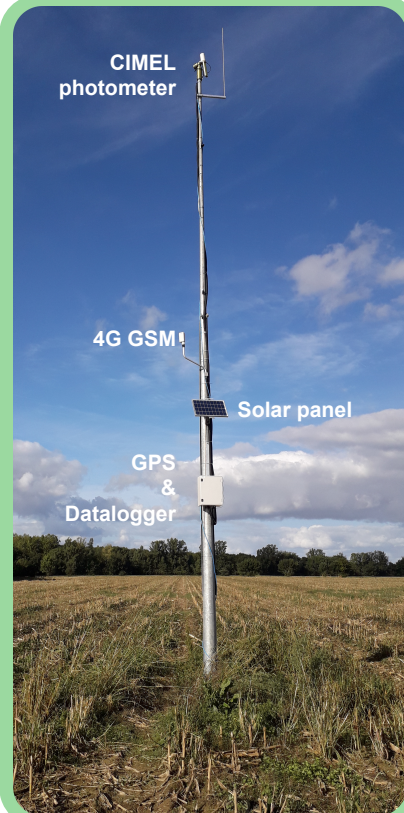
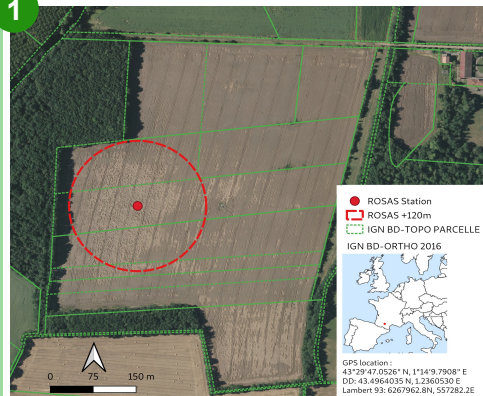
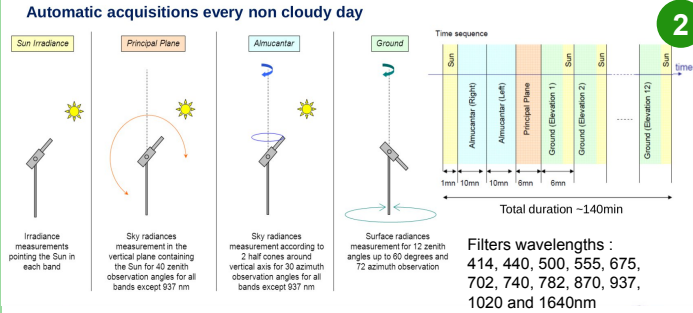
# Quality assessment of the MAJA atmospheric correction processor over a farmland area with a new operational in-situ ROSAS station

J. Colin<sup>1</sup>, L. Landier<sup>2</sup>, S. Coustance<sup>2</sup>, O. Hagolle<sup>1,2</sup>, S. Marcq<sup>2</sup>, N. Guillemot<sup>3</sup>, A. Brut<sup>1</sup>, G. Wallois<sup>4</sup>, A. Meygret<sup>2</sup>  
<sup>1</sup> CESBIO, UMR 5126 (CNES/CNRS/INRAE/IRD/Université Toulouse III), Toulouse, France, <sup>2</sup> CNES, Toulouse, France, <sup>3</sup> THALES Services, Toulouse, France, <sup>4</sup> Ecole d'Ingénieur de Purpan, Toulouse, France

## Objectives

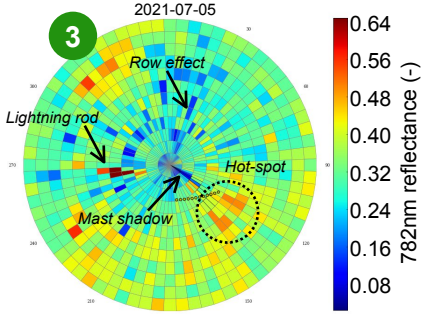
- Atmospheric Correction processors validation requires **in-situ surface reflectances** to go beyond the usual algorithms inter-comparison
- Pre-existing ROSAS stations in La Crau (France) and Gobabeb (Namibia) have a strong homogeneity of reflectances in space and time, which is good for sensor calibration
- The new Fr-Lam ROSAS station is set-up since 2021 in an **agricultural field (1)** with a 3-crops rotation cycle every 2 years, offering a **strong intra- and inter-annual variation of surface reflectances**
- Opportunities to **validate reflectances over vegetation with various BRDF, anisotropy, rows and adjacency effects**

## ROSAS protocol



- The ROSAS protocol designed by the CNES allows to reconstruct in-situ BRDF from a **sequence of measurements (2) using a multispectral photometer**
- A CIMEL CE318 with 12 filters is installed on top of a 10m high mast, and sequentially **acquire sun, sky and ground irradiances**
- Data are quality controlled and post-processed to reconstruct a BRDF rose **(3)**
- For **Level 2 EO products validation**, the reflectances are fitted to the sensor's bands spectral functions and sensor view angles.

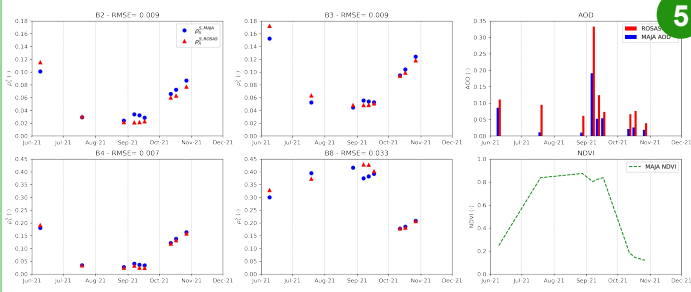
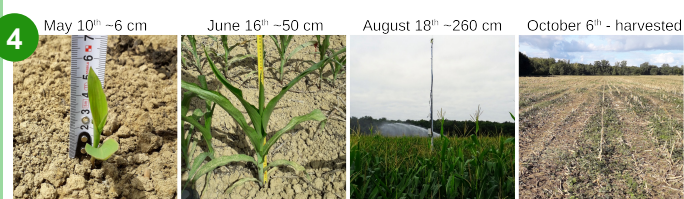
## Measurements



## Results

- The Sentinel-2 surface reflectances processed by the Atmospheric Correction processor **MAJA** are compared with **Fr-Lam** measurements
- To meet quality criteria, only **perfectly clear sky** acquisitions are used for validation, leading to only 9 samples **(5)**
- RMSEs are below  $9.10^{-3}$  for bands 2, 3 and 4, which is **better than the specifications** ;
- Poorer RMSEs were obtained for band 8, reasons of which are still to investigate

- Fr-Lam is intended to **acquire continuously BRDF in the coming decade**, leading to a rich BRDF collection
- Started in March 2021, the ROSAS Fr-Lam made its first acquisition over a **full growth cycle** of silage maize
- Resulting surface reflectances reflect changes from bare soil to small sparse plants, reaching up to 2.6m high before harvest **(4)**



The Fr-Lam site aims at becoming a key level-2 validation site for existing and coming missions.

Lean more and get updates on our blog

