



HAL
open science

Hyperbolic Model Captures Temporal Small Worldness of Brain Dynamics

Aurora Rossi, Pierluigi Crescenzi, Samuel Deslauriers-Gauthier, Emanuele Natale

► **To cite this version:**

Aurora Rossi, Pierluigi Crescenzi, Samuel Deslauriers-Gauthier, Emanuele Natale. Hyperbolic Model Captures Temporal Small Worldness of Brain Dynamics. NeuroMod meeting 2022, Jun 2022, Antibes, France. . hal-03685173

HAL Id: hal-03685173

<https://hal.science/hal-03685173v1>

Submitted on 2 Jun 2022

HAL is a multi-disciplinary open access archive for the deposit and dissemination of scientific research documents, whether they are published or not. The documents may come from teaching and research institutions in France or abroad, or from public or private research centers.

L'archive ouverte pluridisciplinaire **HAL**, est destinée au dépôt et à la diffusion de documents scientifiques de niveau recherche, publiés ou non, émanant des établissements d'enseignement et de recherche français ou étrangers, des laboratoires publics ou privés.



Brain activity can be represented as a complex network

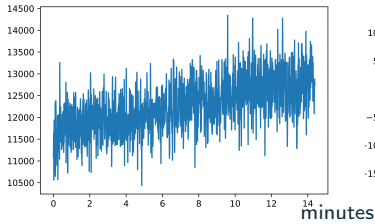
- **Small Worldness:** combination of high clustering coefficient (*local property*) and short temporal path length (*global reachability property*)
- **Scale Freeness:** small number of nodes have a degree that exceeds the average one

What is the best model that simulates the functional connectivity of the brain and can be used as a null model?

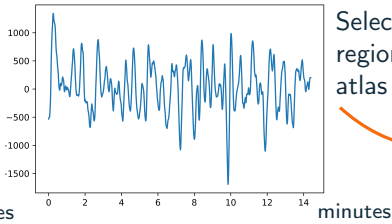
Pipeline

Linear Regression and Bandpass Filtering to remove patient, respiratory and cardiac movements

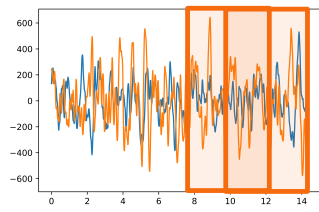
BOLD signal of a voxel



Clean BOLD signal of a voxel



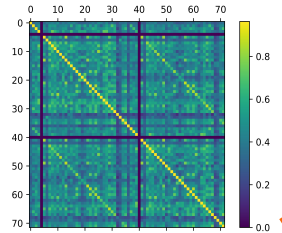
BOLD signal of two regions



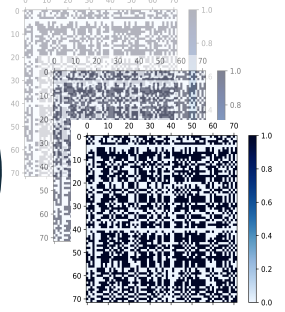
Sliding windows method

Computing correlation coefficient within each window

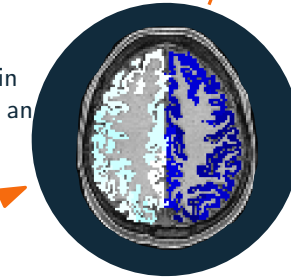
Adjacency matrix



Thresholding

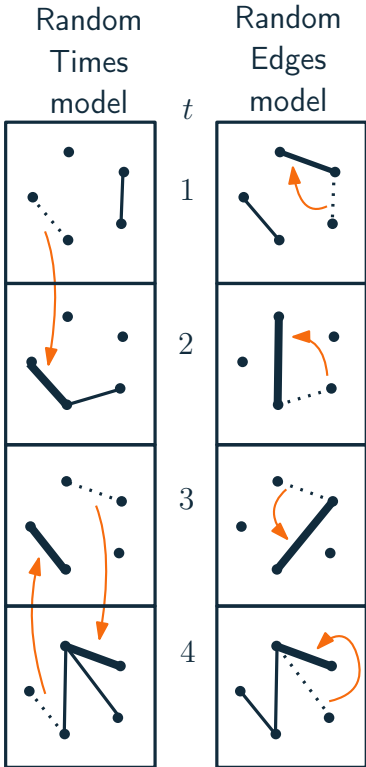


Temporal Brain Network



Selecting brain regions using an atlas

Popular models



REFERENCES

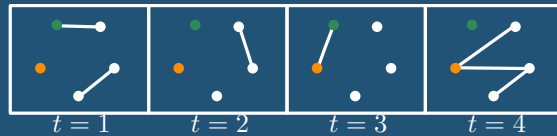
1. Tang, J., Scellato, S., Musolesi, M., Mascolo, C. & Latora, V. Small-world behavior in time-varying graphs. *Phys. Rev. E* 81, 055101 (2010).
2. Humphries, M. D. & Gurney, K. Network 'Small-World-Ness': A Quantitative Method for Determining Canonical Network Equivalence. *PLoS ONE* 3, 11 (2008).
3. Sizemore, A. E. & Bassett, D. S. Dynamic graph metrics: Tutorial, toolbox, and tale. *NeuroImage* 180, 417–427 (2018).
4. Watts, D. & Strogatz, S. Collective dynamics of 'small-world' networks. *Nature* 393, 440–442 (1998).

Measures

- **clustering coefficient:** average over all the nodes of the local clustering coefficient, measures the tendency of the neighbors of a node to form a clique

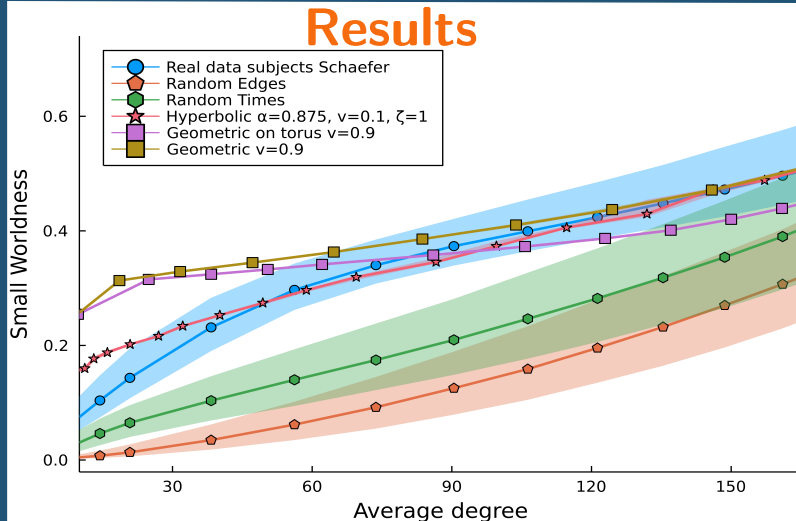


- **temporal path length:** average of the fastest paths between all pairs of nodes

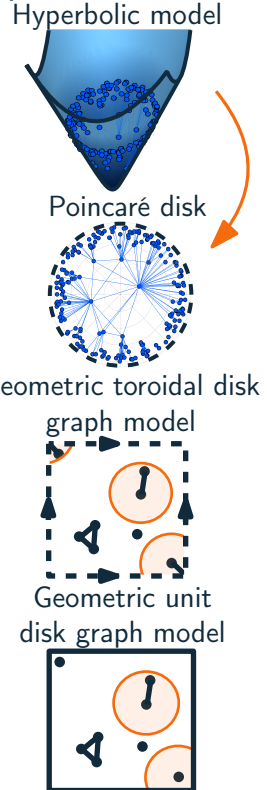


fastest path length from the green to the orange nodes = 3

Results



Proposed models



The Hyperbolic model not only is close to real data but it has the same behaviour