



HAL
open science

Protein Kinase A deregulation in the medial prefrontal cortex impairs working memory in murine Oligophrenin1 deficiency

Chun-Lei Zhang, Mattia Aime, Emilie Laheranne, Xander Houbaert, Hajer El Oussini, Christelle Martin, Marilyn Lepleux, Elisabeth Normand, Jameleddine Chelly, Etienne Herzog, et al.

► To cite this version:

Chun-Lei Zhang, Mattia Aime, Emilie Laheranne, Xander Houbaert, Hajer El Oussini, et al.. Protein Kinase A deregulation in the medial prefrontal cortex impairs working memory in murine Oligophrenin1 deficiency. *Journal of Neuroscience*, 2017, 37 (46), pp.11114-11126. 10.1523/JNEUROSCI.0351-17.2017 . hal-03677819

HAL Id: hal-03677819

<https://hal.science/hal-03677819v1>

Submitted on 4 Dec 2024

HAL is a multi-disciplinary open access archive for the deposit and dissemination of scientific research documents, whether they are published or not. The documents may come from teaching and research institutions in France or abroad, or from public or private research centers.

L'archive ouverte pluridisciplinaire **HAL**, est destinée au dépôt et à la diffusion de documents scientifiques de niveau recherche, publiés ou non, émanant des établissements d'enseignement et de recherche français ou étrangers, des laboratoires publics ou privés.

Copyright

Protein Kinase A Deregulation in the Medial Prefrontal Cortex Impairs Working Memory in Murine Oligophrenin-1 Deficiency

Chun-Lei Zhang,^{1,5} Mattia Aime,¹ Emilie Laheranne,¹ Xander Houbaert,¹ Hajer El Oussini,¹ Christelle Martin,¹ Marilyn Lepleux,¹ Elisabeth Normand,² Jamel Chelly,^{3,4} Etienne Herzog,¹ Pierre Billuart,³ and Yann Humeau¹

¹Team Synapse in Cognition and ²Pole In Vivo, Institut Interdisciplinaire de Neurosciences, Centre National de la Recherche Scientifique Centre National de la Recherche Scientifique Unité Mixte de Recherche 5297, Université de Bordeaux, 33077 Bordeaux cedex, France, ³Centre National de la Recherche Scientifique, Université Paris Descartes, Institut National de la Santé et de la Recherche Médicale, Unité Mixte de Recherche 8104, Institut Cochin, 75014 Paris, France, ⁴Team médecine “translationnelle et neurogénétique,” Institut de Génétique et de Biologie Moléculaire et Cellulaire, Centre National de la Recherche Scientifique Unité Mixte de Recherche 7104, Institut National de la Santé et de la Recherche Médicale U964, Université de Strasbourg, 67015 Illkirch, France, and ⁵Neural Circuits for Spatial Navigation and Memory, Department of Neuroscience, Institut Pasteur, 67400 Paris, France

Classical and systems genetics have identified wide networks of genes associated with cognitive and neurodevelopmental diseases. In parallel to deciphering the role of each of these genes in neuronal or synaptic function, evaluating the response of neuronal and molecular networks to gene loss of function could reveal some pathophysiological mechanisms potentially accessible to nongenetic therapies. Loss of function of the Rho-GAP oligophrenin-1 is associated with cognitive impairments in both human and mouse. Upregulation of both PKA and ROCK has been reported in *Ophn1*^{-/-} mice, but it remains unclear whether kinase hyperactivity contributes to the behavioral phenotypes. In this study, we thoroughly characterized a prominent perseveration phenotype displayed by *Ophn1*-deficient mice using a Y-maze spatial working memory (SWM) test. We report that *Ophn1* deficiency in the mouse generated severe cognitive impairments, characterized by both a high occurrence of perseverative behaviors and a lack of deliberation during the SWM test. *In vivo* and *in vitro* pharmacological experiments suggest that PKA dysregulation in the mPFC underlies cognitive dysfunction in *Ophn1*-deficient mice, as assessed using a delayed spatial alternation task results. Functionally, mPFC neuronal networks appeared to be affected in a PKA-dependent manner, whereas hippocampal-PFC projections involved in SWM were not affected in *Ophn1*^{-/-} mice. Thus, we propose that discrete gene mutations in intellectual disability might generate “secondary” pathophysiological mechanisms, which are prone to become pharmacological targets for curative strategies in adult patients.

Key words: delayed spatial alternation; dorsal hippocampus; oligophrenin-1; prefrontal cortex; protein kinase A; spatial working memory

Significance Statement

Here we report that *Ophn1* deficiency generates severe impairments in performance at spatial working memory tests, characterized by a high occurrence of perseverative behaviors and a lack of decision making. This cognitive deficit is consecutive to PKA deregulation in the mPFC that prevents *Ophn1* KO mice to exploit a correctly acquired rule. Functionally, mPFC neuronal networks appear to be affected in a PKA-dependent manner, whereas behaviorally important hippocampal projections were preserved by the mutation. Thus, we propose that discrete gene mutations in intellectual disability can generate “secondary” pathophysiological mechanisms prone to become pharmacological targets for curative strategies in adults.

Introduction

Loss of function of the Rho-GAP oligophrenin-1 is associated with cognitive impairments (Billuart et al., 1998; van Bokhoven,

2011) and more rarely to autism spectrum disorder and schizophrenia (Piton et al., 2011). Mice with a null *Ophn1* mutation also

Gambino for helping with statistics; Dr. Andrew Penn for text improvement; and Prof. Benjamin K. Yee for technical advice on setting up the Y-maze experiments.

The authors declare no competing financial interests.

Correspondence should be addressed to Dr. Yann Humeau, Unité Mixte de Recherche 5297, Institut Interdisciplinaire de Neurosciences, Bâtiment Neurocampus, 146 rue Léo Saignat, 33077 Bordeaux cedex, France. E-mail: yann.humeau@u-bordeaux.fr.

DOI:10.1523/JNEUROSCI.0351-17.2017

Copyright © 2017 the authors 0270-6474/17/3711114-13\$15.00/0

Received Feb. 7, 2017; revised Sept. 5, 2017; accepted Sept. 28, 2017.

Author contributions: C.-L.Z., H.E.O., J.C., E.H., P.B., and Y.H. designed research; C.-L.Z., M.A., E.L., X.H., H.E.O., C.M., M.L., E.N., and Y.H. performed research; J.C. contributed unpublished reagents/analytic tools; C.-L.Z., M.A., H.E.O., and Y.H. analyzed data; C.-L.Z., H.E.O., E.H., and Y.H. wrote the paper.

This work was supported by Agence Nationale de la Recherche Grant ANR-2010-BLAN-1434-01 to Y.H., and the program investissement d'avenir (Labex Brain). We thank Dr. Pierre Trifilieff for fruitful discussions; Dr. Frédéric

display a number of behavioral and learning deficits (Khelifaoui et al., 2007). *Ophn1* is a synaptic protein controlling synaptic vesicle trafficking, AMPAR recruitment, and mGluR1-dependent LTD (Nadif Kasri et al., 2009, 2011; Nakano-Kobayashi et al., 2009, 2014; Di Prisco et al., 2014). *Ophn1* deficiency in mice has been associated with hyperactivity of Rho-associated protein kinase (ROCK) and cAMP-dependent protein kinase A (PKA) (Khelifaoui et al., 2007, 2014), possibly due to the loss of function of Rho-GAP activity and phosphorylation-based feedback controlling Rho A (Nusser et al., 2006). Interestingly, acute and chronic pharmacological treatments suggested that inhibition of PKA/ROCK activities by the ROCK inhibitor Y27632 improves some of the functional and behavioral deficits observed in *ophn1* KO mice (Powell et al., 2012; Khelifaoui et al., 2014; Meziane et al., 2016). However, actual data do not establish how hyperphosphorylation in discrete neuronal networks generates specific behavioral deficits.

mPFC and its connections with other brain regions play a crucial role in allowing meta-cognitive actions, such as working memory, behavioral flexibility (Kesner and Churchwell, 2011), and capacities that are impaired in mental disorders (Geurts et al., 2004; Rolls et al., 2008; Sumiyoshi et al., 2011). In rodents, researchers use a delayed spatial alternation task (DSA) to test spatial working memory (SWM), of which connections between the hippocampus and mPFC have been shown to play a fundamental role (Laroche et al., 2000; Wang and Cai, 2006). Also, *in vivo* electrophysiological recordings during the DSA task revealed a decision point before the bifurcation area of the maze, where synchronization of hippocampus-PFC neuronal activities occurs in the theta (4–10 Hz) range (Benchenane et al., 2010). It has been proposed that this would allow animals to deliberate to choose the rewarding arm. Interestingly, this deliberation process is characterized by “vicarious trial and error” (VTE) behaviors, the occurrence of which strongly correlates with the success rate (Wikenheiser and Redish, 2015; Redish, 2016).

Computational studies proposed that working memory impairment could be consecutive to aberrant signal-to-noise ratios within PFC networks (Rolls et al., 2008). In rodents, SWM performance is altered in excessive, but not in depressed, PKA activity (Taylor et al., 1999; Arnsten et al., 2005). Meanwhile, some form of PKA-dependent plasticity has been described at hippocampus-PFC projections (Jay et al., 1998). It was also suggested that PKA activity could influence the signal-to-noise ratio within PFC networks, physiologically relaying the dopaminergic activation (Rolls et al., 2008).

Here, we observed that *Ophn1*-deficient mice performed poorly in Y-maze-based SWM tests. We then combined *in vivo* and *in vitro* strategies to test whether the poor behavioral performance results from the hyperactivity of PKA in the PFC region.

Materials and Methods

Subjects

A total of 73 *Ophn1* wild-type (WT) and 73 *Ophn1* knock-out (KO) male littermates were used in this study. All animals are on C57BL/6N background, selected from 2 to 3 months old, and housed in 12 h:12 h light/dark cycle with *ad libitum* feeding. Every effort was made to minimize the number of animals used and their suffering. The experimental design and all procedures were in accordance with the European *Guide for the care and use of laboratory animals* and the animal care guidelines issued by the animal experimental ethics committee of Bordeaux Universities (CE50; APAFIS 2572).

Behavioral protocols

Our Y-maze consists of three arms (40 cm long, 10 cm wide, 15 cm high, 120° between) made of white PVC material. Between trials, the maze was

wiped by 4% acetic acid to avoid odor-based bias. Allocation of the starting arm was varied and counterbalanced within groups. The room light was weak and balanced, and a digital camera located 2 m above the maze was used to record animal trajectories.

Spontaneous alternation. A cohort of mice was placed in the room for 30 min before each mouse was positioned at the end of one starting arm and allowed to freely explore the maze for 10 min. The Y-maze was located on the ground with prominent surrounding visual cues. Instinctively, mice are willing to explore the new environment, thus naturally alternating between arms. Success rate was calculated by dividing the number of correct choice over the total number of trials per session. An entry occurs when all four paws of the animals were within the arm.

Spatial novelty test. Another cohort of mice was habituated to the room for 30 min. Mice were then assigned to explore two arms for 5 min: the “starting” arm and another that will become the “familiar” arm. The third arm, which will become the “novel” arm, was blocked by a sliding door. After returning back to the home cage for 10 min, mice were then allowed to explore the entire maze for 2 min. The time spent in each of the three arms was measured and the number of entries were counted.

DSA test. The DSA task is a delayed non-matching-to-place task extensively described and used to assess for PFC function (Taylor et al., 1999; Wang and Cai, 2006). To improve animal motivation, mice were handled and food restricted to maintain ~85% weight. In the initial week, mice would perform two periods of habituation. In the first step, on a daily basis, each mouse was allowed to explore the maze twice for 10 min with 3 h interval. The food wells in the three-arm ends were baited with rewards, and mice were trained until they were capable of quickly obtaining the food reward. Then in the second step, one arm was set as the “starting” arm, the two others as the “baited” ones. A total of 10 runs were performed in 2 d (5 runs per day, at least 30 min interval between each run). The mice had to learn to alternate between “right-left or left-right” to get the bait with a time limit of 1 min. To avoid a rewarding odor-based bias to mice choices, three bigger pieces of reward were positioned behind each arm end outside of the maze.

In the second week, the learning phase lasts 4 consecutive days. During this phase, the mice received two sessions per day (3 h interval between sessions), each composed of 10 trials (see Fig. 1). From Trial 0, mice run from a starting arm. One of two food-rewarded arms was closed, and mice were forced to get the reward in the opposite arm. In the next 9 successive trials, mice must alternate between right and left arm to find the reward. A trial may include up to 6 runs (30 s delay between runs, 5 consecutive errors allowed, before being forced to enter the rewarding arm). The success rate is calculated as the number of successful choices/total number of choices. We also ranked the errors from 1 to 5 to evaluate the perseveration of mice in repeating wrong choices (Wang and Cai, 2006). Food wells were changed in each trail, and arms were wiped by 4% acetic acid after each run. Between sessions, the maze was rotated, and starting arm was randomly chosen and balanced between animals.

Cannula implantation

At first, mice were treated with buprenorphine (0.1 mg/kg, i.p.) and positioned in a stereotaxic apparatus (David Kopf Instruments), on a 33°C–35°C heating pad, and maintained under continuous isoflurane anesthesia. Stainless-steel guide cannulae (26 gauge; Plastics One) were bilaterally implanted above the medial PFC: anteroposterior 1.9–2.1 mm, mediolateral ±2.1–2.3 mm, dorsoventral –1.5 mm, with ±30° angle, and/or dorsal hippocampus (dHPC): anteroposterior –1.8–2.0 mm, mediolateral ±2.2–2.5 mm, dorsoventral –0.5 mm, with ±30° angle. The cannula was fixed to the skull using dental cement (Super-Bond, Sun Medical). A dummy cannula was inserted into the guide cannula to reduce the risk of infection. A delay of 3–4 weeks for surgery recovery was respected before the food deprivation began, during which the body weight of mice was checked daily.

Drug administration

To reduce stress during drug injection, mice were trained on a daily basis for dummy cannula removal/insertion. To perform freely moving drug injection, the dummy cannula was replaced by an infusion cannula (33 gauge; connected to a 1 μl Hamilton syringe via polyethylene tubing)

Table 1. Statistics

Tested condition	Figure	Test	Characteristics	<i>p</i>	Beta power
Figure 1					
Success rate WT#5 vs KO#5	1C1	χ^2	11,960; 1 df	<0.001	0.950
Success rate WT#1 vs WT#5	1C1	χ^2	17,172; 1 df	<0.001	0.993
Success rate KO#1 vs KO#5	1C1	χ^2	0,577; 1 df	0.447	0.110
High rank errors WT#1 vs WT#5	1C2	χ^2	10,179; 1 df	<0.001	0.910
High rank errors KO#1 vs KO#5	1C2	χ^2	0,166; 1 df	0.683	0.065
High rank errors WT#5 vs KO#5	1C2	Mann–Whitney Rank Sum Test	2 groups: WT high rank error and KO high rank error	<0.001	—
Figure 2					
Entries (total)	2A	<i>t</i> test	2 groups: WT and KO total	0.163	—
Turning preference (right/left)	2B	<i>t</i> test	2 groups: WT and KO ratios	0.425	—
Novel arm preference	2C	<i>t</i> test	2 groups: WT and KO novel	0.875	—
Regular choice probability	2D	<i>t</i> test	2 groups: WT and KO regular	<0.001	—
Figure 3					
Wavering WT vs KO	3A2	Z-test	7,317; 1 df	<0.001	1
Success rate WT _w vs KO _w	3B1	χ^2	9,443; 1 df	0.002	0.886
WT _w vs KO _w	3B3	<i>t</i> test		<0.001	—
Figure 4					
Spiking activity WT vs KO	4B	Two-way ANOVA	Factor A: genotype Factor B: injected current	0482 <0.001	0.05 1
Input–output curves WT vs KO	4C2	Two-way ANOVA	Factor A: genotype Factor B: stimulation power	0365 <0.001	0.05 0.995
FFI WT vs KO	4C3	Mann–Whitney Rank Sum Test	2 groups: WT I/E and KO I/E	0.341	—
Figure 5					
sEPSP frequency WT vs KO	5A2	Mann–Whitney Rank Sum Test	2 groups: WT frequency and KO frequency	0.004	—
Total labeling WT vs KO	5B3	Mann–Whitney Rank Sum Test	2 groups: WT intensity and KO intensity	0.049	—
sEPSC frequency WT vs KO Control	5C2	Mann–Whitney Rank Sum Test	2 groups: WT frequency and KO frequency	0.289	—
sEPSC frequency WT vs KO H89	5C2	Mann–Whitney Rank Sum Test	2 groups: WT frequency and KO frequency	0.007	—
sEPSC frequency WT vs KO FSK	5C2	Mann–Whitney Rank Sum Test	2 groups: WT frequency and KO frequency	0.798	—
Figure 6					
Success rate WT before/drug/after	6B–C1	χ^2	17,739; 2 df	<0.001	0.982
High rank errors WT before/drug/after	6B–C2	χ^2	12,298; 2 df	0.002	0.904
Wavering WT before/drug/after	6B–E1	χ^2	20,427; 2 df	<0.001	0.993
Choice accuracy WT before/drug/after	6B–E	χ^2	0,486; 2 df	0.784	0.085
Figure 7					
Success rate WT before/drug/after	7C1	χ^2	0,759; 2 df	0.684	0.107
Success rate KO before/drug/after	7C1	χ^2	31,878; 2 df	<0.001	1
Wavering KO, 5 conditions	7E2	χ^2	58,430; 4 df	<0.001	1
Choice accuracy KO _w , 5 conditions	7E3	χ^2	32,666; 4 df	<0.001	0.999

projecting out of the guide cannula with 1.5–2 mm to target mPFC or dHPC. Drug doses have been used previously (Taylor et al., 1999): cAMPS-Rp, triethylammonium salt (10 $\mu\text{g}/\mu\text{l}$ in saline), cAMPS-Sp triethylammonium salt (1 $\mu\text{g}/\mu\text{l}$), and 6-BNZ-cAMP N⁶-benzoyladenosine-3',5'-cyclic monophosphate sodium salt (10 $\mu\text{g}/\mu\text{l}$ in saline) were obtained from Tocris Bioscience and were infused bilaterally at a rate of 0.15 $\mu\text{l}/\text{min}$ and a volume of 300–400 nl per side by an automatic pump (Legato 100, KD Scientific), 30 min before testing. To allow the penetration of drug, the injector was maintained for an additional 3 min. After the injection procedure, animals were placed back in their home cage.

In vitro electrophysiological recordings

Acute slice preparation. Fresh slices were obtained from 4- to 5-month-old *Ophn1* WT and KO mice as described previously (Houbaert et al., 2013). All recordings were performed on mPFC-containing coronal slices (anteroposterior 1.3–2 mm). Briefly, mice were anesthetized by intraperitoneal injection of a mixture of ketamine (10 mg/ml)/xylazine (1 mg/ml) before an intracardiac perfusion with a refrigerated bubbled (carbogen: 95% O₂/5% CO₂) sucrose solution containing the following (in mM): 2.7 KCl, 26 NaHCO₃, 1.25 NaH₂PO₄, 10 glucose, 220 sucrose, 0.2 CaCl₂, and 6 MgCl₂. Then, the brain was sliced (300 μm thickness) with a vibratome (Leica VT1200s) at 4°C in sucrose solution. Slices were then maintained for 45 min at 37°C in an interface chamber with ACSF containing the following (in mM): 124 NaCl, 2.7 KCl, 2 CaCl₂, 10 MgSO₄·7H₂O, 26 NaHCO₃, 1.25 NaH₂PO₄, 18.6 glucose, and 2.25 ascor-

bic acid and equilibrated with 95% O₂/5% CO₂. Recordings were performed with standard ACSF (Humeau et al., 2005).

Electrophysiological recordings. Synaptic activities and cellular properties of mPFC neuronal cells were recorded using classical whole-cell patch-clamp techniques previously described (Humeau et al., 2005; Houbaert et al., 2013; Zhang et al., 2015). Cells were recorded in current-clamp (spiking activities, spontaneous EPSPs) or voltage-clamp mode (synaptic conductances), respectively, using K-gluconate-based (in mM as follows: 140 K-gluconate, 5 QX314-Cl, 10 HEPES, 10 phosphocreatine, 4 Mg-ATP, and 0.3 Na-GTP, pH adjusted to 7.25 with KOH, 295 mOsm) and Cs-methylsulfonate-based (in mM as follows: 140 Cs-methylsulfonate, 5 QX314-Cl, 10 HEPES, 10 phosphocreatine, 4 Mg-ATP, and 0.3 Na-GTP, pH adjusted to 7.25 with CsOH, 295 mOsm) intracellular recording solutions.

Optogenetic-based experiments

Adeno-associated viruses (AAV2/9.CAG.ChR2-Venus.W.SV40-p1468, ref Addgene-20071, 5.82E¹² vector genomes (vg)/ml) were packaged at the University of Pennsylvania Vector Core. At ~2 months of age, mice (>20 g) were prepared for the stereotaxic injection. Beforehand, mice were treated with buprenorphine (0.1 mg/kg, i.p.) and positioned in a stereotaxic apparatus (David Kopf Instruments) under continuous anesthesia with isoflurane. During the surgery, the mice were warmed on a 33°C–35°C heating pad. The virus was bilaterally pressure-injected through glass pipettes (Hirschmann Laborgerate, ringcaps, tips pulled O.D 30–40 μm) using a Picosprizer (Parker). The positions of bregma

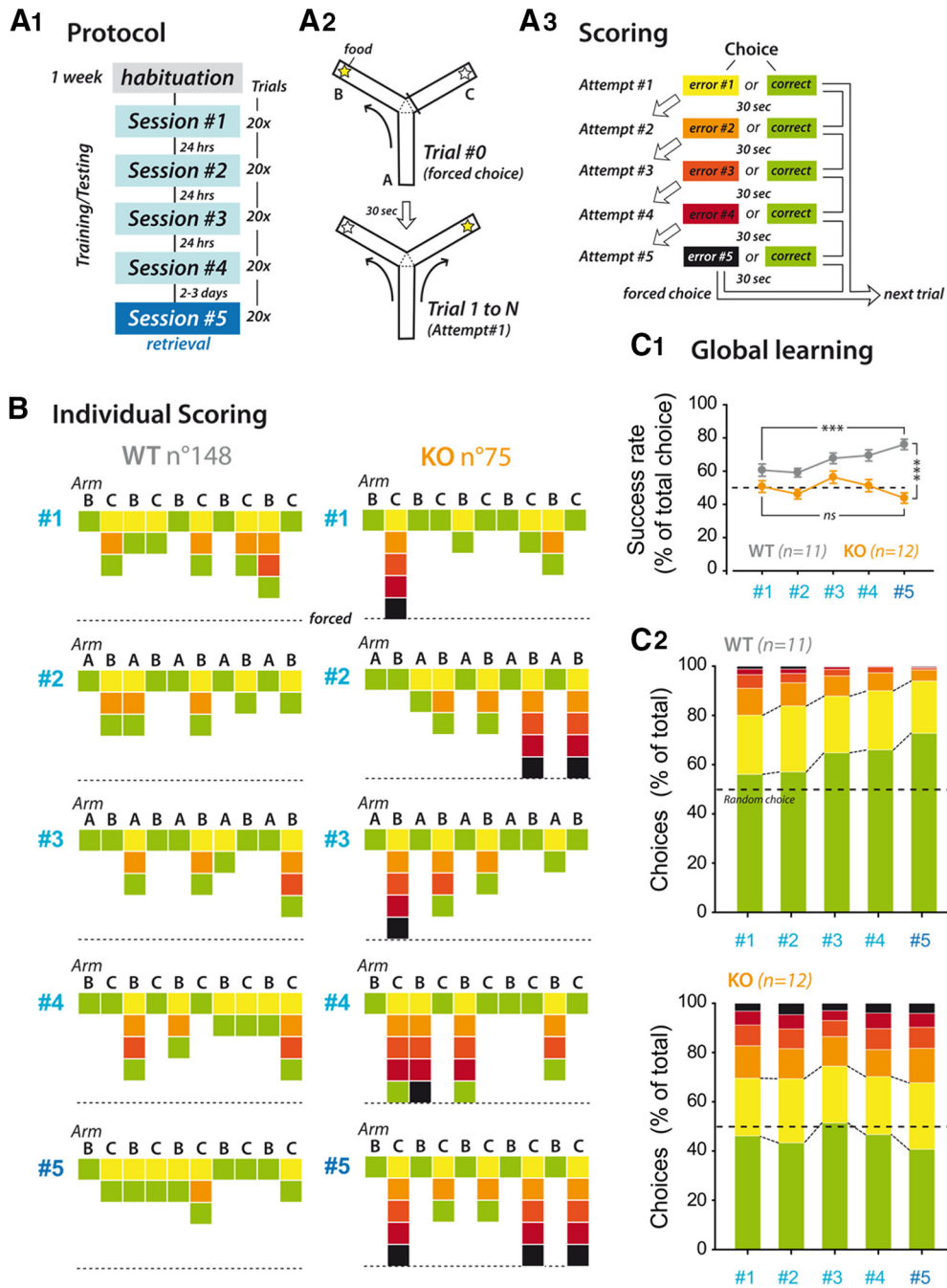


Figure 1. *Ophn1*-deficient mice are incompetent at spatial working memory tests and exhibit perseverative behavior. **A**, (**A1**, **A2**) Protocol used for testing for spatial working memory performance in *Ophn1* WT and KO mice. After habituation, the learning phase includes 80 trials separated into 4 sessions of 20 trials (10 + 10, with 3 h delay) conducted in 4 consecutive days. A retrieval test (10 + 10 trials) is run 2–3 d after learning. High rank errors are defined as errors repeated more than twice (attempts 2–5). **B**, Example of individual scoring exhibited by a WT or a KO mouse during the protocol. **C1**, Time course of the success rate in WT and KO mice during the learning and retrieval phases. Dashed line indicates a 0.5 success rate dictated by random choice. **C2**, Bar graphs represent the evolution of the different choices occurrence (marked in colors in accordance with individual scoring in **B**) along the spatial working memory procedure in WT (top) and KO (bottom) mice.

and lambda points were defined and adjusted to the same horizontal level. The used coordinates for caudal HPC were as follows: anteroposterior -3.1–3.3 mm, mediolateral ±3.2–3.4 mm, dorsoventral -4.0 mm. In mPFC containing acute slices (see above), hippocampus-mPFC monosynaptic EPSCs and disynaptic IPSCs were elicited by 1 ms light pulse delivered by an ultrahigh-power 460 nm LED (Prizmatix) at maximal intensity. All included cells were recorded in layer V of the IL region, as they consistently receive more excitatory inputs from the hippocampal region (Y.H. laboratory; data not shown). As for above-mentioned experiments, data were recorded with a Multiclamp700B (Molecular

Devices), filtered at 2 kHz, and digitized at 10 kHz. Data were acquired and analyzed with pClamp10.2 (Molecular Devices).

PKA phosphorylation in mPFC tissues

Animals were killed by cervical dislocation, and their brains were rapidly dissected out and processed further at 4°C. The PFC were isolated and immediately homogenized or snap-frozen in liquid nitrogen. The PFC tissues were homogenized in TPS buffer (0.32 M sucrose, 4 mM HEPES) containing 1× protease inhibitor cocktail (Calbiochem) alone or added with 1× phosphatase inhibitor cocktail (Pierce Biotechnology). Protein

was quantified by Bradford assay. An equal amount of protein (10 μg) was separated on 12% or 4%–20% SDS-polyacrylamide gels and transferred to nitrocellulose membranes at 4°C for Western blot analysis. The membranes were blocked in 5% BSA in PBS containing 0.1% Tween 20 for 1 h at room temperature and incubated with the relevant antibody. The blots were incubated overnight at 4°C with the primary antibodies diluted in blocking solution: 1/1000 dilution of anti-phospho-(Ser/Thr) PKA substrate antibody (Cell Signaling Technology), and 1/1000 dilution of anti-glyceraldehyde 3-phosphate dehydrogenase (GAPDH) antibody (Santa Cruz Biotechnology). Membranes were also probed with 1/5000 dilution of anti-β-tubulin (Sigma-Aldrich), used as a loading control, allowing signal normalization. The membranes were washed and incubated in the appropriate AlexaFluor-488/-647 coupled secondary antibodies diluted 1/2000 for 1 h followed by direct reading membranes on Bio-Rad Pharos FX plus. The density of immune blots was measured using ImageJ software. Phosphorylation rate was determined by ratios between phosphorylated proteins and the β-tubulin loading control.

Statistics

Detailed statistics are described in each figure legend and are accessible in Table 1. For all tests, statistical difference was considered at $p < 0.05$.

Results

***Ophn1* deficiency in mice leads to aberrant perseverative behaviors in a spatial working memory test**

Based on previous observations unraveling a lack of cued fear extinction behavior in *Ophn1*-deficient mice (Khelifaoui et al., 2014), we embarked on a more specific investigation to test the executive functions supported by the mPFC. Thus, we assessed the ability of *Ophn1* WT and KO mice to learn an alternation rule with a time delay in the Y-maze. This task is known to mobilize spatial working memory in the mPFC and hippocampus (Benchenane et al., 2010; Gordon, 2011) (Fig. 1A). All along the training phase, *Ophn1* WT progressively improved their performance, reaching a success rate close to 0.7 (70%), which was maintained during a remote test (success rate WT#1 vs WT#5: $p < 0.001$; Fig. 1C1). In stark contrast, all along the training and the testing phases, *Ophn1* KO mice did not perform better than a random score rate (50%) (success rate KO#1 vs KO#5: $p < 0.447$; WT#5 vs KO#5: $p < 0.001$; Fig. 1C1), thus not displaying apparent sign of alternation rule learning. In addition to this poor performance, *Ophn1* KO mice displayed another characteristic phenotype: the increased occurrence of repetitive errors (i.e., when the animal kept choosing the wrong arm several times in a row) (Fig. 1B, C2). This was scored as high rank errors, which normally disappear with training in

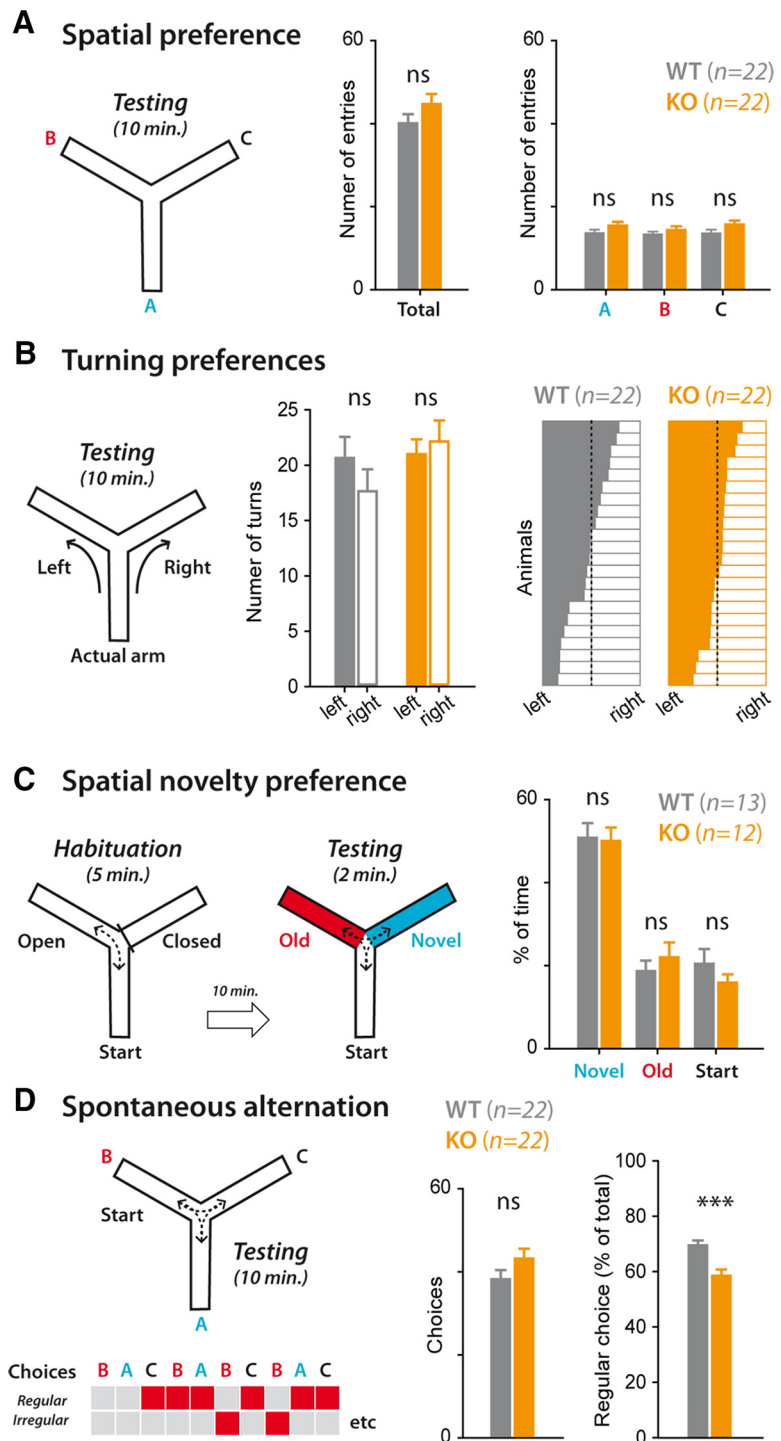


Figure 2. *Ophn1*-deficient mice show deficit in spontaneous alteration task, but not in other Y-maze based tasks. **A**, The exploration activity and spatial preference of *Ophn1* WT and KO mice were tested by counting the total number of arm entries (left) or entries into each arm (right). **B**, The natural tendency of mice in turning left or right was also tested. **C**, Spatial reference memory was tested using spatial novelty task (see Materials and Methods) and was not impaired in *Ophn1* KO mice. Number of animals is indicated. **D**, Based on the innate tendency of mice to explore a prior unvisited arm, regular/irregular choices were defined. KO mice displayed less such tendency than their WT littermates in spontaneous alteration task, which indicates a spatial working memory problem. *** $p < 0.001$, *t*-test.

WT mice (high rank errors: WT#1 vs WT#5, $p < 0.001$; Fig. 1C2). High rank errors were strikingly and consistently present in KO mice (high rank errors: KO#1 vs KO#5, $p < 0.683$; WT#5 vs KO#5: $p < 0.001$; Fig. 1C2). Control spatial preference tests showed that these high rank mistakes were not due to turning

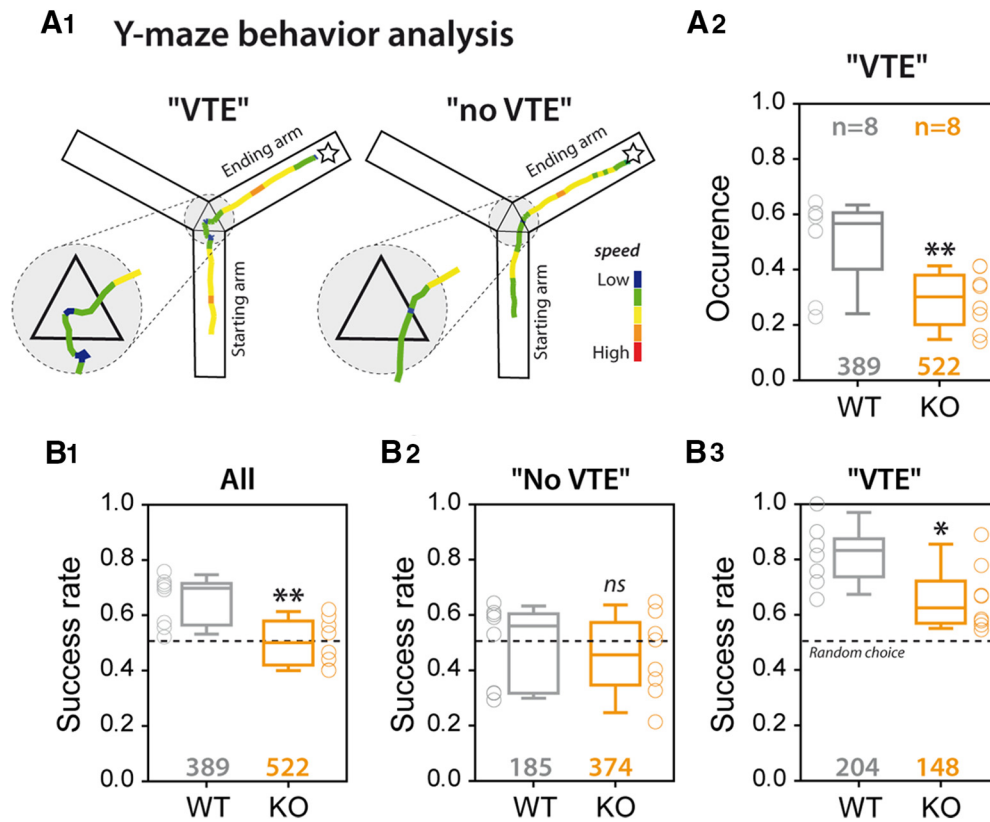


Figure 3. *Ophn1* KO mice display deliberation and cognitive deficits at spatial working memory tests. **A1**, Examples of mouse video-tracking in the Y-maze showing typical “wavering” as VTE or “no wavering” NO VTE trajectories at the bifurcation (choice) area of the maze (zoomed in inset). Speed of motion is color-coded from blue (low) to red (high). **A2**, Bar graph represents the occurrence of VTE/wavering in WT and KO mice. **B1–B3**, Detailed analysis of the success rates depending on the occurrence of VTE. When no VTE/wavering is measured, the success rate is random in both genotypes (**B2**); whereas upon VTE behavior, high success rates are observed (**B3**). However, KO mice performance upon VTE remains lower than that of WT mice. The number of analyzed trials is indicated. * $p < 0.05$; ** $p < 0.01$.

preferences (Fig. 2B) and argued against navigation abnormalities in the maze (Fig. 2A) or short-term spatial reference memory preferences (Fig. 2C). Interestingly, decreased spontaneous alternation was found in *Ophn1* KO mice (Fig. 2D). Together with previous reports from our laboratory (Khelifaoui et al., 2014), these results confirmed that *Ophn1* deficiency in mice leads to behavioral perseveration, a phenotype classically attributed to mPFC dysfunction.

Ophn1-deficient mice display low occurrence of deliberative behaviors and cognitive impairments

Interestingly, when mice make a choice before the bifurcation area (Fig. 3A), they display VTE behavior, reflecting a deliberative process (Redish, 2016). We first characterized VTE behavior in WT mice. During VTE behavior, the trajectory of mice appears to waver on approaching the bifurcation area, which is easily detectable in videos. Specifically, we observe a slower and less linear displacement at the crossing point compared with the starting or ending arm (Fig. 3A1). Importantly, the occurrence of VTE during trials (“VTE trials”) was associated with high choice accuracy (success rate: “VTE trials”: 0.82 ± 0.04 ; “no VTE trial”: 0.49 ± 0.05 , $p < 0.001$; Fig. 3B2,B3). In stark contrast, in *Ophn1* KO mice, the occurrence of VTE behaviors was lower (“VTE trials”: WT vs KO, $p < 0.001$; Fig. 3A2) and the success rate of “VTE trials” was lower and close to random (success rate “VTE”: 0.66 ± 0.04 ; WT vs KO, $p = 0.002$; Fig. 3B3). From these results, we conclude that the deterioration of *Ophn1* KO mice performance

in Y-maze resides both in cognitive impairment and the low occurrence of deliberation-driven decision making.

Neurophysiology of mPFC networks in *Ophn1*-deficient mice

Next, we examined the physiology of some of the neuronal circuits known to support spatial working memory, namely, mPFC neuronal circuits and the long-range hippocampal projections that are likely to allow the synchronization between hippocampal and mPFC neuronal networks (Laroche et al., 2000; Benchenane et al., 2010). To achieve this, we performed whole-cell patch-clamp recordings from mPFC neurons in acute slices of *Ophn1* WT and KO mice (Figs. 4, 5). First, we compared various passive cellular properties of recorded mPFC neurons but failed in identifying any genotype-based differences (Table 2) with one noticeable exception: the holding current was found to be higher in KO cells, suggesting that mPFC neurons were slightly more depolarized (see Table 1, statistical values). The spiking pattern activities were also comparable between WT and KO mice (Fig. 4B). Next, we tested the functionality of hippocampal projections to layer V cells of IL (intralimbic mPFC) (see Materials and Methods) using an optogenetic approach based on the stereotaxic injection of an AAV-ChR2-GFP within caudal hippocampus (Fig. 4C) (Zhang et al., 2015). We then photo-stimulated long-range hippocampal fibers carrying channel-rhodopsin in mPFC slices to allow the recording of direct monosynaptic excitatory transmission (Fig. 4C2) and the feedforward recruitment of local mPFC interneurons. Their activation by hippocampal inputs lead to a

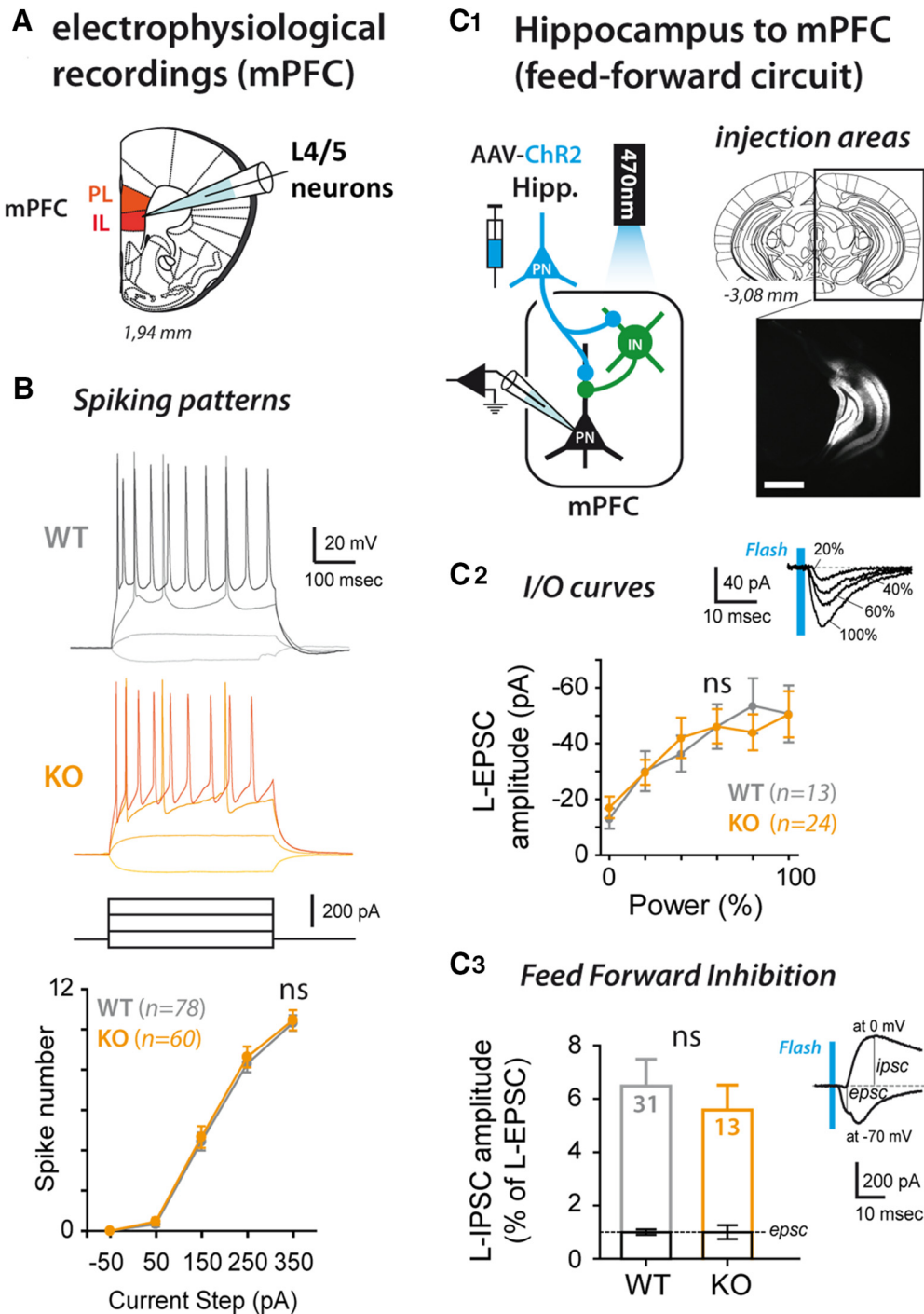


Figure 4. *In vitro* electrophysiological recordings did not reveal a functional impact of the mutation on hippocampus-mPFC interconnections. **A**, Scheme of the acute slice preparation in which IL neurons were recorded using whole-cell patch-clamp technique. **B**, Spiking activities of mPFC neurons in WT and KO preparations were indistinguishable. The number of recorded cells is indicated. **C1**, Study of hippocampal-mPFC feedforward circuits using optogenetic stimulation. An AAV-ChR2-YFP vector was injected into caudal hippocampus to allow stimulating direct hippocampal projections to the mPFC following delivery of flashes of blue light (1 ms, 470 nm). mPFC neurons were recorded at -70 and 0 mV to allow detecting monosynaptic EPSCs (**C2**, **C3**) and disynaptic IPSCs (**C3**). **C2**, Input/output curves of light evoked EPSCs in both genotypes. **C3**, Relative amplitude of light-evoked disynaptic IPSCs in both genotypes. The number of recordings is indicated. Insets, Typical recordings.

GABAA-mediated outward current at a holding potential of 0 mV and that is delayed by a few milliseconds (Fig. 4C3). Importantly, these two synaptic conductances are thought to be involved in the control of behaviorally relevant neuronal assemblies and in their synchronization during spatial working memory-dependent tasks (Rolls et al., 2008). Interestingly, these projections appeared to be functionally preserved when *Ophn1* is mutated in mice (Fig. 4C). Although some hip-

pocampal projections toward specific mPFC cell populations may be impacted by *Ophn1* deletion, it suggested that behavioral deficits must reside from local neuronal networks defects either in hippocampus or in mPFC.

PKA increases synaptic noise in the PFC of *Ophn1* KO mice
Neuronal networks have to extract meaningful sensory-evoked signal from background synaptic noise, the level of which de-

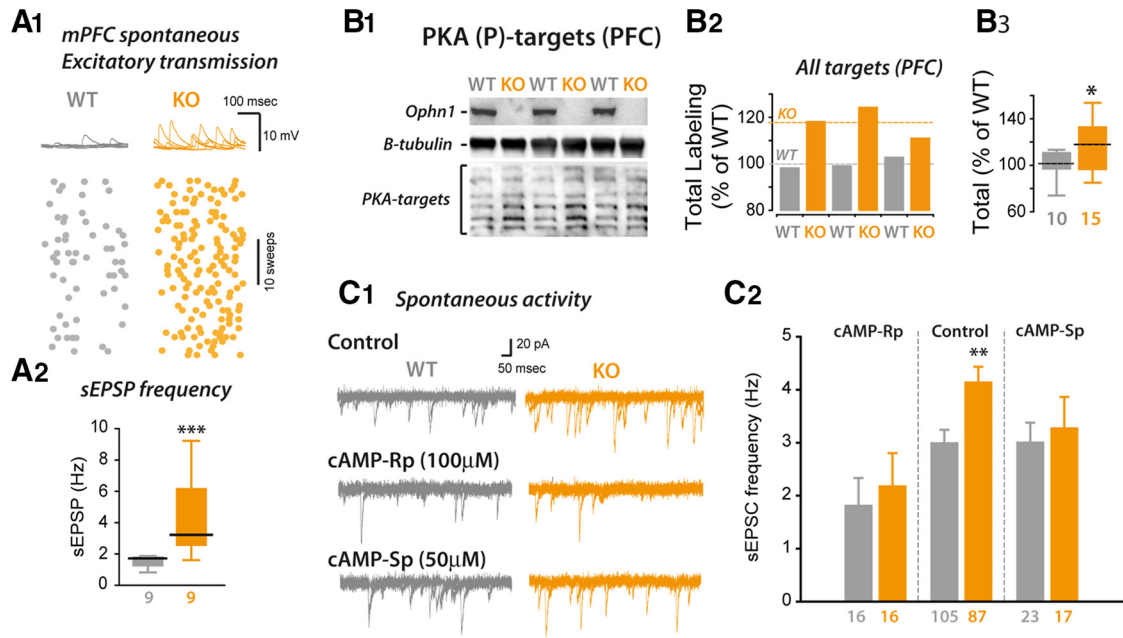


Figure 5. *Ophn1* deficiency leads to a PKA-dependent increase of synaptic noise in the mPFC. **A1**, Typical recordings of spontaneous excitatory potentials, and KO preparations show more frequent events. **A2**, Bar graphs represent the sEPSP frequency in mPFC neurons in WT (gray) and KO (orange) preparations. *** $p < 0.001$. **B**, PKA-mediated phosphorylation was tested using Western blots and anti-phospho-PKA target antibodies. **B1–B3**, *Ophn1* KO samples showed increased signal intensities compared with WT homogenates. The number of animals is indicated. * $p < 0.05$. **C**, Modulation of spontaneous EPSC frequency by pharmacological manipulations of PKA activity. **C1**, Typical electrophysiological recordings in the various tested conditions. cAMP-Rp: competitive inhibiting cAMP-dependent PKA; cAMP-Sp: competitive activating cAMP-dependent PKA. **C2**, Bar graph represents the average excitatory drives received by mPFC neurons in control conditions and following application of cAMP-Sp or cAMP-Rp. The number of recordings is indicated. ** $p < 0.01$.

Table 2. mPFC cell properties

Tested condition	WT cells ($n = 106$)	KO cells ($n = 105$)	Statistics test	p
Leak current (holding -70 mV)	-18 ± 6 pA	-57 ± 3 pA	Mann–Whitney Rank Sum Test	0.001
Access resistance	25 ± 1 $\text{M}\Omega$	25 ± 1 $\text{M}\Omega$	Mann–Whitney Rank Sum Test	0.922
Input resistance	202 ± 12 $\text{M}\Omega$	213 ± 12 $\text{M}\Omega$	Mann–Whitney Rank Sum Test	0.467
Cell capacitance	24 ± 1	18 ± 1 pA	Mann–Whitney Rank Sum Test	0.921

depends on several neuromodulators and signaling pathways, including those involving PKA (Geurts et al., 2004; Arnsten et al., 2005; Rolls et al., 2008). We therefore recorded the spontaneous excitatory synaptic events in mPFC neurons from WT and KO mice. In control conditions, both in voltage and current-clamp mode, we detected a strong increase in the frequency of spontaneous excitatory events in *Ophn1* KO preparations, without any effect on event amplitudes (sEPSP frequency WT vs KO: $p = 0.004$; Fig. 5A2; sEPSC frequency WT vs KO: $p < 0.001$; Fig. 5C2).

Next, we tested for possible involvement of PKA activity in controlling spontaneous excitatory transmission in mPFC slices (Fig. 5C). Beforehand, we wanted to confirm our previous results that PKA activity was increased in some, but not all, brain regions in *Ophn1* KO mice (Khelifaoui et al., 2014). To this aim, we ran biochemical analysis of PKA-mediated phosphorylation in homogenates from *Ophn1* WT and KO prefrontal cortices (see Materials and Methods; Fig. 5B). Using an anti-phospho-PKA-target antibody, we compared PKA-mediated phosphorylation levels between WT and KO mice (Fig. 5B1–B3). A moderate but significant increase of phosphorylation levels of PKA targets was observed in *Ophn1* KO samples (total labeling WT vs KO, $p < 0.05$;

Fig. 5B3), confirming previous results obtained with enzymatic assay in mouse cerebral cortex homogenates.

Then, sEPSC frequency was assessed in WT and KO slices in presence of PKA-signaling antagonist cAMP-Sp (100 μM) or PKA-signaling agonist cAMP-Rp (50 μM) (Fig. 5C). Interestingly, PKA modulators were efficient in affecting sEPSC frequency recorded in mPFC neurons in both genotypes, but measured frequencies in low-PKA (cAMP-Rp) and high-PKA (cAMP-Sp) conditions were indistinguishable between genotypes (cAMP-Sp: sEPSC frequency WT vs KO: $p = 0.798$; Fig. 5C2). Thus, the increased “synaptic noise” observed in *Ophn1* KO mPFC preparations may result from higher endogenous PKA activity level, and possibly to neuronal cell depolarization (see above). Interestingly, under the presence of the well-tolerated and permeable PKA pathway antagonist cAMP-Sp, the sEPSC frequency in *Ophn1* KO preparations was comparable with the one found in WT mice (cAMP-Sp: sEPSC frequency WT vs KO: $p = 0.289$; Fig. 5C2), akin to a process of normalization of synaptic noise levels *in vivo* in *Ophn1*-deficient mice (Taylor et al., 1999).

Increasing PKA activity in mPFC of WT mice mimicked *Ophn1* KO phenotype

At first, we tested whether PKA activity changes in mPFC were necessary and sufficient to mimic the SWM deficits observed in *Ophn1* KO mice. To achieve this, we manipulated PKA activity levels in the mPFC of WT and KO mice running the DSA test. To that end, mice were implanted to allow intra-mPFC delivery of PKA modulators before the DSA test sessions (Fig. 6). We first tried to reproduce previous experiments showing that an increase of PKA levels in PFC impacts SWM performance in WT mice (Taylor et al., 1999). Here, as in Figure 3, the success rate scoring was sorted according to the absence or presence of a “VTE” behavior. A first group of WT animals were implanted within mPFC or dHPC (Fig. 6B) and submitted to DSA learning (Fig.

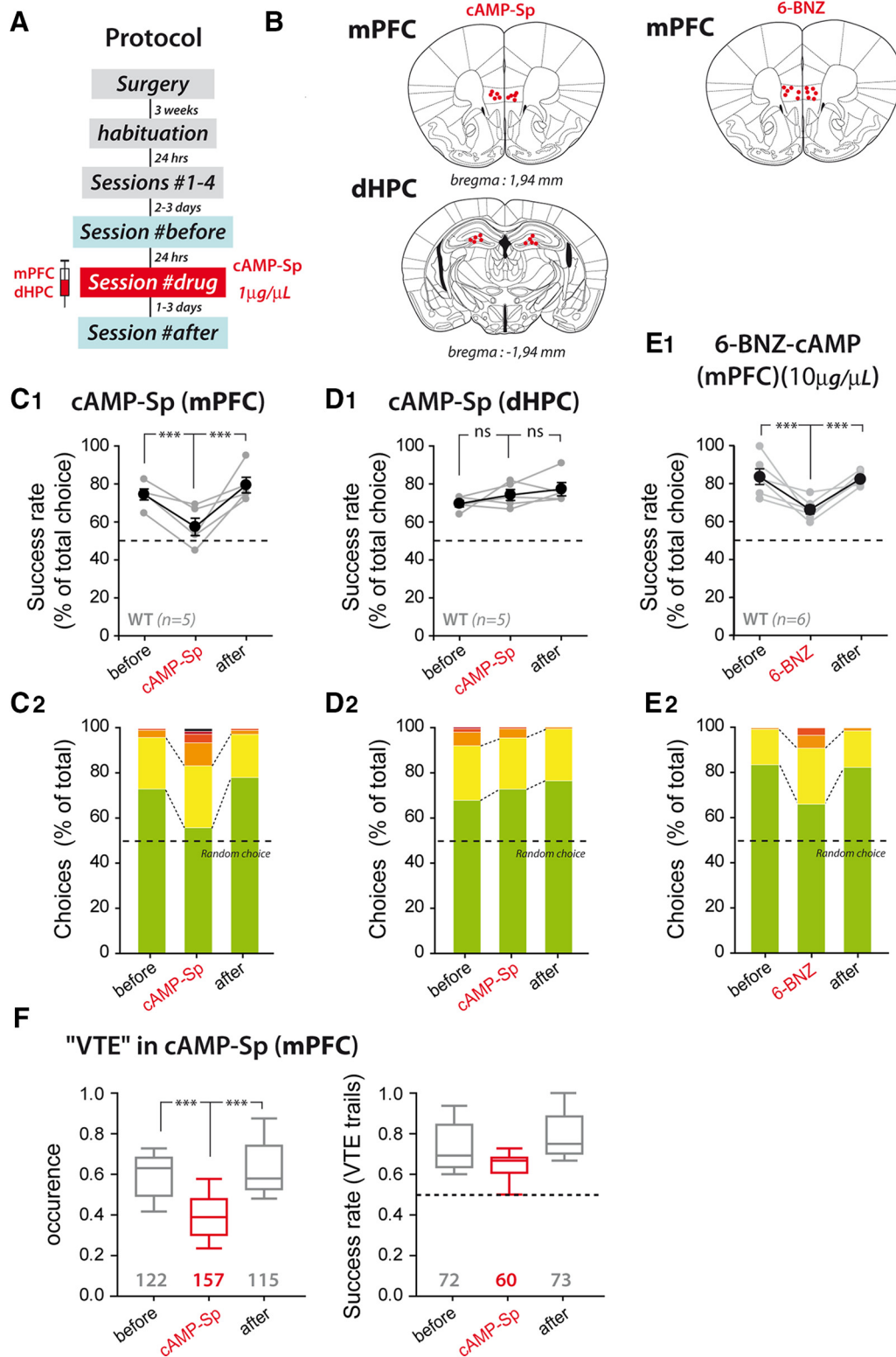


Figure 6. Increasing PKA activity in mPFC phenocopies *Ophn1* KO performance drop at the DSA test. **A**, Experimental scheme includes cannula implantation, learning of DSA rule, and three sessions of testing before, during, and after delivery of the PKA activators cAMPSp or 6-BNZ-cAMP in the mPFC or in the dHPC of WT animals. **B**, Injection loci for all included animals. **C–E**, Scoring of the success rate of WT animal performance at the DSA test before, upon, and after drug delivery in the mPFC (**C1, C2, E1, E2**) or dHPC (**D1, D2**). **F**, VTE/wavering expression and consecutive choice accuracy were analyzed in the cAMP-sp/mPFC condition. The number of analyzed trials is indicated. *****p* < 0.001.

6A). After accomplishment of the DSA learning, animal performance was collected the day before, during, and the day after (Taylor et al., 1999) intra-mPFC injection of the well-tolerated PKA agonist (cAMPSp, 1 μg/μl) (Taylor et al., 1999). The re-

sults showed that increased PKA activity in mPFC affected not only the local network activity (Fig. 5C) but also animal performances (success rate: WT drug cAMP-Sp vs before or vs after: *p* < 0.001; Fig. 6C1,C2) with a pronounced decrease in the occurrence

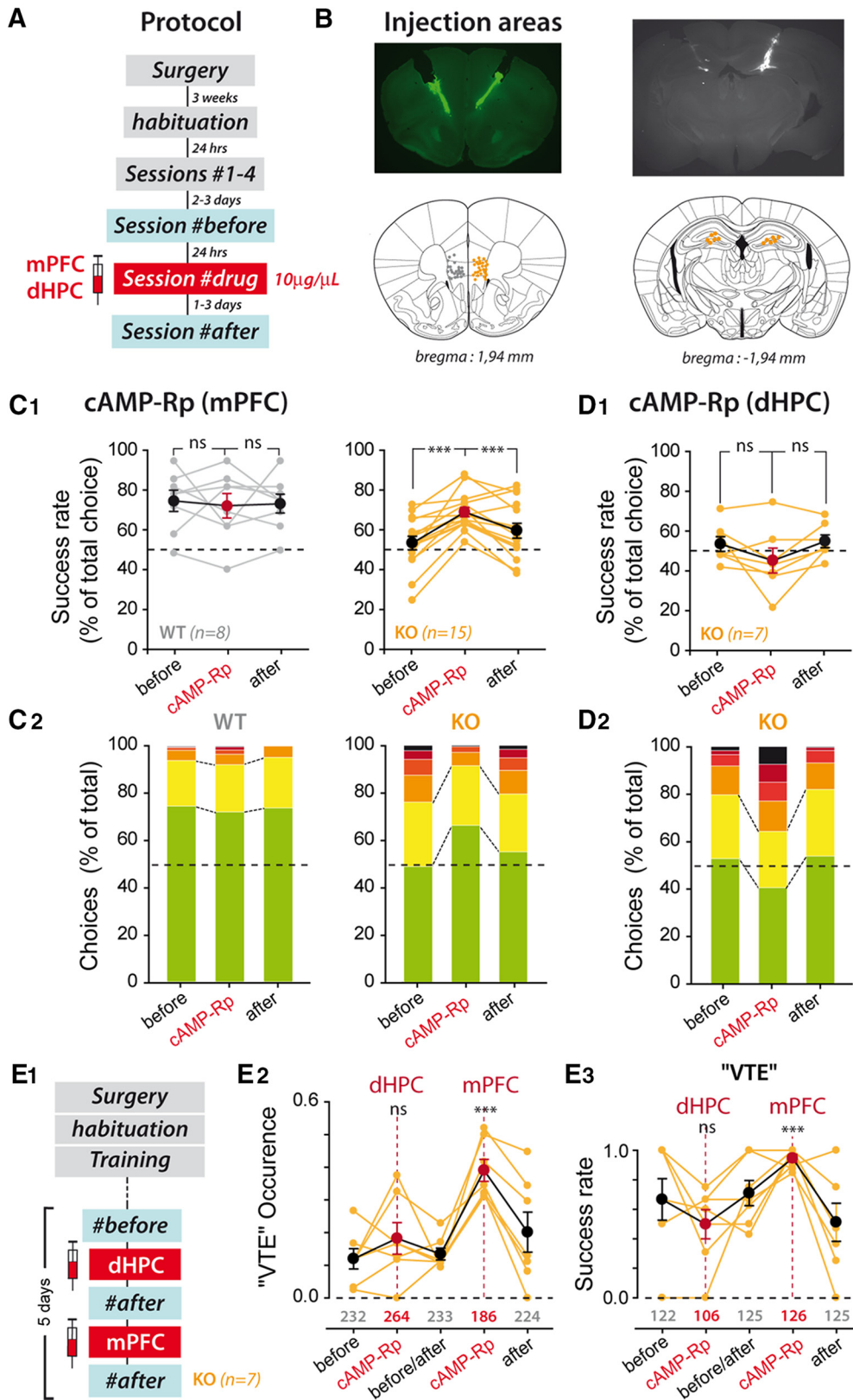


Figure 7. Complete phenotypic normalization of *Ophn1* KO mice following pharmacological inactivation of PKA in the mPFC. **A**, Description of our protocol that includes cannula implantation, learning of DSA rule, and 3 testing sessions done before, during, and after delivery of the PKA blocker cAMPS-Rp in mPFC or dHPC of KO and WT animals. **B**, Injection loci for all included animals. **C1, C2**, Scoring of the success rate of WT and KO animal performance at the DSA test before/during/after cAMPS-Rp application in mPFC. The number of animals is indicated. Upon cAMPS-Rp infusion, success rate of KO animals improves, and high rank error rate strongly decreases. **D1, D2**, A similar cAMPS-Rp infusion within dHPC of KO animals did not reproduce the effects within mPFC. **E1**, A group of mice was implanted both bilaterally in dHPC and mPFC to assess for VTE/wavering occurrence and choice accuracy (as in Fig. 2). cAMPS-Rp was successively injected in dHPC and then in mPFC. **E2**, Effect of cAMPS-Rp injection on the occurrence of VTE. There is strong increase observed following mPFC injection. **E3**, Scoring of the choice accuracy following a VTE/wavering behavior. The number of trials is indicated. *** $p < 0.001$.

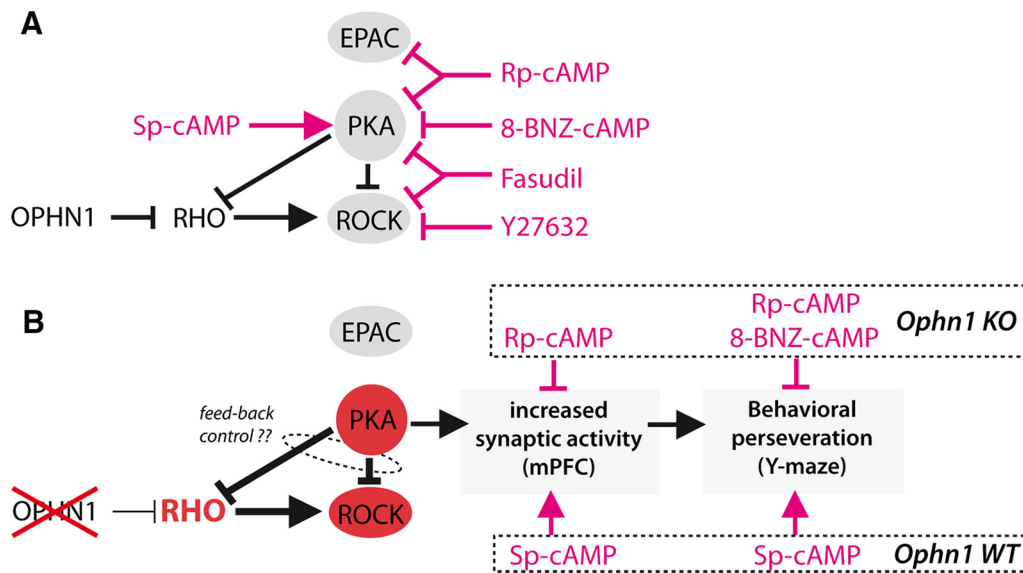


Figure 8. Results summary. **A**, Pharmacological tools acting on various kinases that have been used or discussed in *in vivo* experiments on *Ophn1*-deficient mice in the present study. **B**, Scheme describing the proposed sequence of molecular, cellular, network events leading to behavioral perseveration in *Ophn1* KO mice.

of VTE behaviors (VTE: drug vs before or vs after: $p < 0.001$; Fig. 6*F*, left) and a nonsignificant difference in the success rate with VTE behavior (success rate with VTE: drug vs before or vs after: $p = 0.784$; Fig. 6*F*, right). In addition, we also noticed the appearance of high rank errors (drug vs before or vs after: $p = 0.002$; Fig. 6*C2*), indicating perseveration behavior. Interestingly, similar results were obtained following mPFC injections of 6-BNZ-cAMP ($10 \mu\text{g}/\mu\text{l}$), a PKA activator with a strong selectivity for PKA over guanine nucleotide exchange factor cAMP-GEF (Epac; see Discussion) (high rank errors: drug vs before or vs after: $p < 0.001$; Fig. 6*E*). Thus, an increase of PKA activity in mPFC, but not dHPC (Fig. 6*D*), is sufficient to mimic the deficit in SWM tests that we observed in *Ophn1* KO mice.

Decreased PKA activity in PFC of KO mice restores cognitive performance

We then directly tested whether PKA hyperactivity in mPFC of *Ophn1* KO mice is the primary cause for DSA performance and perseveration behavior. For this, we scored KO animal performance while PKA activity was decreased in the PFC through local infusion of cAMPS-Rp ($10 \mu\text{g}/\mu\text{l}$; Fig. 7). As a control, we analyzed the effect of a similar treatment performed in WT animals (Fig. 7*C*, left panels) or in the dHPC of KO mice (Fig. 7*D*). In KO, but not WT, animals (Fig. 7*C*), decreasing PKA activity in the mPFC significantly improved SWM performance: indeed, all treated KO mice displayed a noticeable increase of success rate (success rate WT drug vs before or vs after: $p = 0.684$, success rate KO drug vs before or vs after: $p < 0.001$; Fig. 7*C1*) accompanied with a decrease of high rank errors (high rank errors KO before vs drug vs after: $p < 0.001$; Fig. 7*C2*). The same pharmacological treatment applied in dHPC of KO mice had no positive effect on DSA test (Fig. 7*D*) as for lower dose of cAMPS-Rp in mPFC of KO mice ($1 \mu\text{g}/\mu\text{l}$; data not shown).

Finally, to determine whether we achieved a real normalization of animal VTE behavior, we also scored VTE/wavering occurrence and its relation to success rates. The tested group of mice were bilaterally implanted in both in mPFC and dHPC, in which cAMPS-Rp could be allowed to diffuse successively in dHPC and mPFC with a 5 d protocol (Fig. 7*E1*). As shown in Figure 7,

mPFC, but not dHPC, infusion was associated with a significant increase of VTE (VTE occurrence KO: mPFC drug vs all other conditions: $p < 0.001$; Fig. 7*E2*), which was observed together with an increase in the choice accuracy in VTE trials (choice accuracy KO: mPFC drug vs all other conditions: $p < 0.001$; Fig. 7*E3*).

Therefore, our results collectively led us to propose that PKA hyperactivity associated with *Ophn1* deficiency in mice is necessary and sufficient to explain the spatial alternation deficit.

Discussion

In the present work, we thoroughly characterized a pronounced behavioral phenotype displayed by *Ophn1*-deficient mice in a Y-maze-based spatial working memory test. Our results led us to conclude that the poor performance of KO mice results from a lack of deliberation (VTE/wavering) during decision-making and to cognitive (low choice accuracy even when VTE/wavering is present) and adaptive (no self-correction leading to perseverative behavior) deficits. Meanwhile, we could establish that *Ophn1* deficiency is accompanied by an increase of excitatory synaptic noise in the mPFC. Interestingly, we could phenocopy *Ophn1* deficiency phenotype in the DSA test through the local activation of PKA in WT mPFC. Finally, our attempts to inhibit the pathological PKA hyperactivity in KO mPFC corrected all observed behavioral deficits (Fig. 8).

PKA activity and synaptic noise in absence of *Ophn1*

Peak performance at a DSA test has been shown to depend on mobilization of neuronal assemblies in the mPFC following hippocampal instructions, which synchronizes circuit activities in the theta range (Benchenane et al., 2010). Importantly, computational studies suggest that activation of mPFC networks, which have been proposed to allow pattern completion during cognitive processes, such as working memory, is sensitive to synaptic noise (Rolls et al., 2008). In line with a previous study (Khelifaoui et al., 2014), the present data obtained using electrophysiological approaches support the notion that hyperactivity of PKA in *Ophn1*-deficient mice generated synaptic noise in mPFC region (Fig. 5). If it is well known that PKA-mediated phosphorylation of RhoA and ROCK could inhibit RhoA pathway (Newell-Litwa et al., 2011),

yet the origin for the increased PKA activity in *Ophn1*-deficient mice remains to be understood. It may result from the loss of function of its Rho-GAP activity and translational and/or post-translational driven feedback mechanism controlling RhoA activity (Nusser et al., 2006). To our knowledge, no evidence is available for a direct link between PKA and *Ophn1*. Some answers may be provided by a more detailed analysis of AKAPs (A Kinase-Anchoring Proteins; a family of scaffold proteins that regulate PKA activity) in neuronal populations (Diviani et al., 2006; Wang et al., 2006).

Synaptic noise in the mPFC region is thought to cause some of the phenotypes observed in schizophrenic patients, which typically exhibited reduced signal-to-noise ratio and reduced phase locking in the PFC (Winterer et al., 2000). Among many mechanisms, cAMP/PKA signaling pathway seems well positioned to finely tune the signal-to-noise ratio. Indeed, dopamine release in the PFC is thought to mimic the reward prediction signal and efficiently modulate PFC-HPC synchrony during the DSA test (Benchenane et al., 2010), as well as tune the signal-to-noise ratio within mPFC networks (Rolls et al., 2008). Furthermore, DA release within the mPFC involves cAMP/PKA-dependent signaling (Arnsten et al., 2005), opening the possibility that the hyperactivity of PKA in *Ophn1*-deficient mice could shunt the ability of dopaminergic inputs to provide rewarding signals within the mPFC. This absence could contribute to the absence of self-correction during the DSA test, thus generating the perseverative behavior. Interestingly, because a normalization of KO animal behavior is obtained even after training is completed, the reward circuits allowing rule learning and reinforcement must be maintained in the absence of *Ophn1*. Future experiments will be required to test how *Ophn1* deletion may disrupt dopaminergic modulation by changing cAMP/PKA signaling activity.

Separating cognitive and deliberative deficits using DSA test

Interestingly, Benchenane et al. (2010) showed that the level of PFC-HPC synchrony before the entrance of the crossroad point in the Y-maze was correlated with choice accuracy and hence renamed as the “decision point.” We here show that choice accuracy at the decision point is also highly correlated with the occurrence of a VTE/wavering behavior, typified by deceleration at the crossroad point and slow-motion sequence preceded by a subsequent acceleration (Fig. 3A1), thereby reproducing pioneer studies describing VTE behaviors (Redish, 2016). Therefore, VTE/wavering at the decision point is considered as a reliable indication of working memory processing and deliberation leading to decision making (Fig. 3B). If combined with choice accuracy determination, it could help in characterizing real SWR-related decisions (VTE vs no VTE) and cognitive-related choices (accuracy of “VTE trials”). This further dissection of the behavioral sequence allowed a better understanding of the poor performance of *Ophn1* KO mice. Thus, the incorrect choices could be attributed both to a deliberation deficit adding onto cognitive-based failures even when they do pay attention to the task (Fig. 3). Strikingly, all these parameters were completely normalized following pharmacological PKA activity correction within the mPFC but not in the dHPC (Fig. 7), thus shedding light onto the crucial role of PKA deregulation associated with *Ophn1* deficiency within the PFC in this cognitive task. An interesting observation is the normalization of high accuracy-related VTE behaviors in PKA-manipulated KO mice, thus showing the capacity of prefrontal circuits in establishing relevant cognitive actions even though *Ophn1* expression is absent in this structure.

Pharmacological correction of behavior in trained *Ophn1*-deficient adult mice

We think that our findings are opening a new avenue in the understanding of the pathophysiology of intellectual disabilities by showing that some of very handicapping consequences of monogenic mutations may be largely accessible to pharmacological treatment in affected adults. Another interesting finding reported here is that the poor performance of *Ophn1*-mutated animals in the Y-maze test was not due to defective learning capabilities, but rather due to a lack of behavioral control normally assumed by the PFC during the DSA task. Indeed, we could phenotypically normalize animal behavior after the training procedure was terminated, demonstrating that the KO mice acquired the DSA rule during the learning phase. Together with the observation that dHPC PKA modulations in WT and KO mice did not display strong effects (Figs. 6, 7), we propose that the described increase in PKA activity in the hippocampus of *Ophn1* KO mice (Khelifaoui et al., 2014) and the related lack of PKA-dependent LTP at DG-CA3 synapses did not play a major role in DSA coding in mice. Similarly, synaptic deficits were previously reported in hippocampal circuits due to *Ophn1* deletion (Nadif Kasri et al., 2009, 2011; Nakano-Kobayashi et al., 2009, 2014; Powell et al., 2012). Even though these may reflect important direct cellular and molecular consequences to the deletion, they may not be central to the presently described cognitive impairment.

Recent studies have shown that, in addition to PKA, cAMP activates the Epac, thereby controlling HCN channels (Wang et al., 2006). However, in contrast to PKA, Epac does not seem to activate CREB *in vitro*. We first measured HCN channels activity in mPFC cells from *Ophn1* WT and KO mice but could not find any difference in the outward current generated during hyperpolarizing steps (data not shown) in both conditions. Next, we used conditional *Ophn1* animals to test whether deletion of *Ophn1* was sufficient to lead to P-CREB increase in a cell-autonomous way. Indeed, compared with nontransfected cells, mPFC cells in which *Ophn1* was deleted exhibited higher P-CREB levels as their untransfected neighbors, as assessed by P-CREB immunohistochemistry (see Materials and Methods; data not shown). Although not definitively excluding any effect of *Ophn1* condition on Epac signaling, these experiments strongly support that a cell-specific increase in PKA activity is associated with the loss of function of *Ophn1* in the mPFC, at the origin of an increase in synaptic noise in this structure.

In conclusion, we report here that *Ophn1* deficiency in mice leads to an unanticipated destabilization of the cAMP/PKA signaling pathway that is causing a major incapacity to access working memories. As pharmacological approaches successfully restored normal performance and physiological parameters, we think that our report is opening a new therapeutic avenue for *Ophn1*-related syndromes. Beyond this, it should contribute to the heterogeneity of pathological consequences of *Ophn1* deficiencies in humans.

References

- Arnsten AF, Ramos BP, Birnbaum SG, Taylor JR (2005) Protein kinase A as a therapeutic target for memory disorders: rationale and challenges. *Trends Mol Med* 11:121–128. [CrossRef Medline](#)
- Benchenane K, Peyrache A, Khamassi M, Tierney PL, Gioanni Y, Battaglia FP, Wiener SI (2010) Coherent theta oscillations and reorganization of spike timing in the hippocampal-prefrontal network upon learning. *Neuron* 66:921–936. [CrossRef Medline](#)
- Billuart P, Bienvenu T, Ronce N, des Portes V, Vinet MC, Zemni R, Roest Crolius H, Carrié A, Fauchereau F, Cherry M, Briault S, Hamel B, Fryns JP, Beldjord C, Kahn A, Moraine C, Chelly J (1998) Oligophrenin-1

- encodes a rhoGAP protein involved in X-linked mental retardation. *Nature* 392:923–926. [CrossRef Medline](#)
- Di Prisco GV, Huang W, Buffington SA, Hsu CC, Bonnen PE, Placzek AN, Sidrauski C, Krnjević K, Kaufman RJ, Walter P, Costa-Mattioli M (2014) Translational control of mGluR-dependent long-term depression and object-place learning by eIF2 α . *Nat Neurosci* 17:1073–1082. [CrossRef Medline](#)
- Diviani D, Baisamy L, Appert-Collin A (2006) AKAP-Lbc: a molecular scaffold for the integration of cyclic AMP and Rho transduction pathways. *Eur J Cell Biol* 85:603–610. [CrossRef Medline](#)
- Geurts HM, Verté S, Oosterlaan J, Roeyers H, Sergeant JA (2004) How specific are executive functioning deficits in attention deficit hyperactivity disorder and autism? *J Child Psychol Psychiatry* 45:836–854. [CrossRef Medline](#)
- Gordon JA (2011) Oscillations and hippocampal-prefrontal synchrony. *Curr Opin Neurobiol* 21:486–491. [CrossRef Medline](#)
- Houbaert X, Zhang CL, Gambino F, Lepleux M, Deshors M, Normand E, Levet F, Ramos M, Billuart P, Chelly J, Herzog E, Humeau Y (2013) Target-specific vulnerability of excitatory synapses leads to deficits in associative memory in a model of intellectual disorder. *J Neurosci* 33:13805–13819. [CrossRef Medline](#)
- Humeau Y, Herry C, Kemp N, Shaban H, Fourcaudot E, Bissière S, Lüthi A (2005) Dendritic spine heterogeneity determines afferent-specific Hebbian plasticity in the amygdala. *Neuron* 45:119–131. [CrossRef Medline](#)
- Jay TM, Gurden H, Yamaguchi T (1998) Rapid increase in PKA activity during long-term potentiation in the hippocampal afferent fibre system to the prefrontal cortex in vivo. *Eur J Neurosci* 10:3302–3306. [CrossRef Medline](#)
- Kesner RP, Churchwell JC (2011) An analysis of rat prefrontal cortex in mediating executive function. *Neurobiol Learn Mem* 96:417–431. [CrossRef Medline](#)
- Khelifaoui M, Denis C, van Galen E, de Bock F, Schmitt A, Houbbron C, Morice E, Giros B, Ramakers G, Fagni L, Chelly J, Nosten-Bertrand M, Billuart P (2007) Loss of X-linked mental retardation gene oligophrenin1 in mice impairs spatial memory and leads to ventricular enlargement and dendritic spine immaturity. *J Neurosci* 27:9439–9450. [CrossRef Medline](#)
- Khelifaoui M, Gambino F, Houbaert X, Ragazzon B, Müller C, Carta M, Lanore F, Srikumar BN, Gastrein P, Lepleux M, Zhang CL, Kneib M, Poulain B, Reibel-Foisset S, Vitale N, Chelly J, Billuart P, Lüthi A, Humeau Y (2014) Lack of the presynaptic RhoGAP protein oligophrenin1 leads to cognitive disabilities through dysregulation of the cAMP/PKA signalling pathway. *Philos Trans R Soc Lond B Biol Sci* 369:20130160. [CrossRef Medline](#)
- Laroche S, Davis S, Jay TM (2000) Plasticity at hippocampal to prefrontal cortex synapses: dual roles in working memory and consolidation. *Hippocampus* 10:438–446. [CrossRef Medline](#)
- Meziane H, Khelifaoui M, Morello N, Hiba B, Calcagno E, Reibel-Foisset S, Selloum M, Chelly J, Humeau Y, Riet F, Zanni G, Herauld Y, Bienvenu T, Giustetto M, Billuart P (2016) Fasudil treatment in adult reverses behavioural changes and brain ventricular enlargement in Oligophrenin-1 mouse model of intellectual disability. *Hum Mol Genet* 25:2314–2323. [CrossRef Medline](#)
- Nadif Kasri N, Nakano-Kobayashi A, Malinow R, Li B, Van Aelst L (2009) The Rho-linked mental retardation protein oligophrenin-1 controls synapse maturation and plasticity by stabilizing AMPA receptors. *Genes Dev* 23:1289–1302. [CrossRef Medline](#)
- Nadif Kasri N, Nakano-Kobayashi A, Van Aelst L (2011) Rapid synthesis of the X-linked mental retardation protein OPHN1 mediates mGluR-dependent LTD through interaction with the endocytic machinery. *Neuron* 72:300–315. [CrossRef Medline](#)
- Nakano-Kobayashi A, Kasri NN, Newey SE, Van Aelst L (2009) The Rho-linked mental retardation protein OPHN1 controls synaptic vesicle endocytosis via endophilin A1. *Curr Biol* 19:1133–1139. [CrossRef Medline](#)
- Nakano-Kobayashi A, Tai Y, Nadif Kasri N, Van Aelst L (2014) The X-linked mental retardation protein OPHN1 interacts with Homer1b/c to control spine endocytic zone positioning and expression of synaptic potentiation. *J Neurosci* 34:8665–8671. [CrossRef Medline](#)
- Newell-Litwa KA, Horwitz AR (2011) Cell migration: PKA and RhoA set the pace. *Curr Biol* 21:R596–R598. [CrossRef Medline](#)
- Nusser N, Gosmanova E, Makarova N, Fujiwara Y, Yang L, Guo F, Luo Y, Zheng Y, Tigyi G (2006) Serine phosphorylation differentially affects RhoA binding to effectors: implications to NGF-induced neurite outgrowth. *Cell Signal* 18:704–714. [CrossRef Medline](#)
- Piton A, Gauthier J, Hamdan FF, Lafrenière RG, Yang Y, Henrion E, Laurent S, Noreau A, Thibodeau P, Karemera L, Spiegelman D, Kuku F, Duguay J, Destroismaisons L, Jolivet P, Côté M, Lachapelle K, Diallo O, Raymond A, Marineau C, et al. (2011) Systematic resequencing of X-chromosome synaptic genes in autism spectrum disorder and schizophrenia. *Mol Psychiatry* 16:867–880. [CrossRef Medline](#)
- Powell AD, Gill KK, Saintot PP, Jiruska P, Chelly J, Billuart P, Jefferys JG (2012) Rapid reversal of impaired inhibitory and excitatory transmission but not spine dysgenesis in a mouse model of mental retardation. *J Physiol* 590:763–776. [CrossRef Medline](#)
- Redish AD (2016) Vicarious trial and error. *Nat Rev Neurosci* 17:147–159. [CrossRef Medline](#)
- Rolls ET, Loh M, Deco G, Winterer G (2008) Computational models of schizophrenia and dopamine modulation in the prefrontal cortex. *Nat Rev Neurosci* 9:696–709. [CrossRef Medline](#)
- Sumiyoshi C, Kawakubo Y, Suga M, Sumiyoshi T, Kasai K (2011) Impaired ability to organize information in individuals with autism spectrum disorders and their siblings. *Neurosci Res* 69:252–257. [CrossRef Medline](#)
- Taylor JR, Birnbaum S, Ubriani R, Arnsten AF (1999) Activation of cAMP-dependent protein kinase A in prefrontal cortex impairs working memory performance. *J Neurosci* 19:RC23. [Medline](#)
- van Bokhoven H (2011) Genetic and epigenetic networks in intellectual disabilities. *Annu Rev Genet* 45:81–104. [CrossRef Medline](#)
- Wang GW, Cai JX (2006) Disconnection of the hippocampal-prefrontal cortical circuits impairs spatial working memory performance in rats. *Behav Brain Res* 175:329–336. [CrossRef Medline](#)
- Wang Y, Chen Y, Chen M, Xu W (2006) AKAPs competing peptide HT31 disrupts the inhibitory effect of PKA on RhoA activity. *Oncol Rep* 16:755–761. [CrossRef Medline](#)
- Wikenheiser AM, Redish AD (2015) Hippocampal theta sequences reflect current goals. *Nat Neurosci* 18:289–294. [CrossRef Medline](#)
- Winterer G, Ziller M, Dorn H, Frick K, Mulert C, Wuebben Y, Herrmann WM, Coppola R (2000) Schizophrenia: reduced signal-to-noise ratio and impaired phase-locking during information processing. *Clin Neurophysiol* 111:837–849. [CrossRef Medline](#)
- Zhang CL, Houbaert X, Lepleux M, Deshors M, Normand E, Gambino F, Herzog E, Humeau Y (2015) The hippocampo-amygdala control of contextual fear expression is affected in a model of intellectual disability. *Brain Struct Funct* 220:3673–3682. [CrossRef Medline](#)