



**HAL**  
open science

## Association between coronary artery calcifications and 6-month mortality in hospitalized patients with COVID-19

Elie Mousseaux, Antoine Fayol, Nicolas Danchin, Gilles Soulat, Etienne Charpentier, Marine Livrozet, Jean-Baptiste Carves, Victoria Tea, Fares Ben Salem, Chekrallah Chamandi, et al.

### ► To cite this version:

Elie Mousseaux, Antoine Fayol, Nicolas Danchin, Gilles Soulat, Etienne Charpentier, et al.. Association between coronary artery calcifications and 6-month mortality in hospitalized patients with COVID-19. *Diagnostic and Interventional Imaging*, 2021, 102 (12), pp.717-725. 10.1016/j.diii.2021.06.007 . hal-03677367

**HAL Id: hal-03677367**

**<https://hal.science/hal-03677367v1>**

Submitted on 5 Jan 2024

**HAL** is a multi-disciplinary open access archive for the deposit and dissemination of scientific research documents, whether they are published or not. The documents may come from teaching and research institutions in France or abroad, or from public or private research centers.

L'archive ouverte pluridisciplinaire **HAL**, est destinée au dépôt et à la diffusion de documents scientifiques de niveau recherche, publiés ou non, émanant des établissements d'enseignement et de recherche français ou étrangers, des laboratoires publics ou privés.



Distributed under a Creative Commons Attribution - NonCommercial 4.0 International License

# Association between coronary artery calcifications and 6-month mortality in hospitalized patients with COVID-19

Short title:

## CAC and mortality among hospitalized COVID-19 patients

Elie Mousseaux<sup>a,b,c\*</sup>, Antoine Fayol<sup>a,c,d</sup>, Nicolas Danchin<sup>a,e</sup>, Gilles Soulat<sup>a,b,c</sup>, Etienne Charpentier<sup>a,b</sup>, Marine Livrozet<sup>a,d</sup>, Jean-Baptiste Carves<sup>a,d</sup>, Victoria Tea<sup>a,c</sup>, Fares Ben Salem<sup>a,b</sup>, Chekrallah Chamandi<sup>a,c</sup>, Jean-Sébastien Hulot<sup>a,c,d</sup>, Etienne Puymirat<sup>a,c,e</sup>,

<sup>a</sup> Université de Paris, Faculté de Médecine, 75006 Paris, France

<sup>b</sup> Department of Radiology, Assistance Publique-Hôpitaux des Hôpitaux de Paris, Hôpital Européen Georges-Pompidou, 75015 Paris, France.

<sup>c</sup> Institut National de la Santé et de la Recherche Médicale, PARCC, UMR970, 75015 Paris, France

<sup>d</sup> CIC1418 and DMU CARTE, Assistance Publique-Hôpitaux de Paris, Hôpital Européen Georges-Pompidou, 75015, Paris, France

<sup>e</sup> Department of Cardiology, Assistance Publique-Hôpitaux de Paris, Hôpital Européen Georges-Pompidou, 75015 Paris, France

**\*CORRESPONDING AUTHOR:** [elie.mousseaux@aphp.fr](mailto:elie.mousseaux@aphp.fr)

## Abstract

**Purpose.** The purpose of this study was to evaluate the association between coronary artery calcium (CAC) visual score and 6-month mortality in patients with coronavirus disease 2019 (COVID-19).

**Material and methods.** A single-center prospective observational cohort was conducted in 169 COVID-19 consecutive hospitalized patients between March 13 and April 1, 2020, and follow-up for 6-months. A four-level visual CAC scoring was assessed by analyzing images obtained after the first routine non-ECG-gated CT performed to detect COVID-19 pneumonia.

**Results.** Among 169 confirmed COVID-19 patients (118 men, 51 women; mean age  $65.6 \pm 18.8$  [SD] years; age range: 30–95 years) 63 (37%) presented with either moderate ( $n=26$ , 15.3%) or heavy ( $n=37$ , 21.8%) CAC detected by CT and 20 (11.8%) had history of cardiovascular disease requiring specific preventive treatment. At six months, mortality rate (45/169; 26.6%) increased with magnitude of CAC and was 7/64 (10.9%), 11/42 (26.2%), 10/26 (38.5%), 17/37 (45.9%) for no-CAC, mild-CAC, moderate-CAC and heavy-CAC groups, respectively ( $P = 0.001$ ). Compared to the no CAC group, risk of death increased after adjustment with magnitude of CAC (HR: 2.23, 95% CI: 0.73–6.87,  $P = 0.16$ ; HR: 2.78, 95% CI: 0.85–9.07,  $P = 0.09$ ; HR: 5.38, 95% CI: 1.57–18.40,  $P = 0.007$ ; in mild CAC, moderate and heavy CAC groups, respectively). In patients without previous coronary artery disease (154/169; 91%), mortality increased from 10.9% to 45.8% ( $P = 0.001$ ) according to the magnitude of CAC categories. After adjustment, presence of moderate or heavy CAC was associated with higher mortality (HR: 2.26, 95% CI: 1.09–4.69,  $P = 0.03$ ).

**Conclusion.** By using non-ECG-gated CT during the initial pulmonary assessment of COVID-19, heavy CAC is independently associated with 6-month mortality in patients hospitalized for severe COVID-19 pneumonia.

**Keywords: THERE ARE FIVE INDEX TERMS SEPARATED BY SEMI COLUMNS. I HOPE THAT FOR THE FIRST TIME THEY WILL BE CORRECTLY DISPLAYED IN THE PROOFS**

COVID-19;  
Outcomes;  
Computed tomography;  
Myocardial Injury;  
Coronary artery calcification,

## **ABBREVIATIONS**

ASCVD: Atherosclerotic cardiovascular disease; BNP: Brain natriuretic peptide; CI: Confidence interval; CT: Computed tomography; CAC: Coronary artery calcification; CHD: Coronary artery heart disease; COVID-19: Coronavirus disease 2019; ECG: Electrocardiogram; HR: Hazard ratio; HS-troponin I: High sensitivity-troponin I; HU: Hounsfield unit; IQR: Interquartile range; kVp: Kilovolt peak; SD: Standard deviation

## **1. Introduction**

Coronavirus disease 2019 (COVID-19) is a new infectious disease that has rapidly become a pandemic. There is now growing evidence that its severity is very often associated with the presence of cardiovascular risk factors such as hypertension, diabetes or obesity, but also to the development of myocardial injury [1]. However, the relationship between COVID-19-associated myocardial injury, coronary artery atherosclerosis and risk of mortality remains unclear [2-4].

Low-dose computed tomography (CT) on admission has been widely used for screening suspected COVID-19 patients at the early stage of the infection [5, 6], both to help diagnose the disease and to assess the extent of lung involvement that could predict the occurrence of acute respiratory distress syndrome and mortality [1, 5, 7].

However, chest CT, also offers the opportunity to detect unsuspected cardiovascular disease. Indeed, in the general population, quantitative coronary artery calcification (CAC)

correlates with the total atherosclerotic burden is an independent predictor of coronary artery heart disease (CHD) and enhances traditional risk factors-based prediction models [8-11]. It has also been shown that a simple overall visual assessment method of CAC scoring on the basis of non-ECG-gated and non-contrast low-dose CT separated patients into risk categories of either CHD death or all cause of mortality [10-12]. Thus, visual CAC estimation is now well recognized as an effective method, strongly suggested by several societies for routine reporting on all non-gated chest CT examinations because this method is simple, fast and does not require a standardized acquisition with a fixed energy at 120 Kilovolt peak (kVp) or dedicated software as it is necessary to do to obtain a reliable quantitative Agatston score [10, 12, 13].

The purpose of this study was to evaluate the potential association between atherosclerotic plaque burden detected by non-ECG-gated CT at admission and clinical outcomes including 6-month mortality in a consecutive series of hospitalized confirmed COVID-19 patients.

## **2 Methods**

### *2.1 Patient population*

This was a prospectively designed pilot cohort study in a single center and no predefined number of subjects was therefore planned. This study received ethic committee approval (IDF #00011928) and signed informed consent was obtained from patients. Thus, all consecutive adult patients ( $\geq 18$  years) hospitalized in our institution for COVID-19 between March 13 and April 1, 2020 for at least one day, who underwent chest CT at admission and reverse transcriptase-polymerase chain reaction testing positive for COVID-19 were eligible with. Outcomes (mortality and recovery) were monitored up to September 30<sup>th</sup>, 2020 allowing at least a 6-month follow-up for all patients. Figure 1 shows the study flow chart.

### *2.2 Data collection*

The demographic characteristics (age and sex), clinical data (symptoms, comorbidities, laboratory findings including high sensitivity troponin I [HS-troponin I], treatments, complications and outcomes) were collected in standardized electronic medical records.

All unenhanced low-dose CT examinations were performed on the same multi-row system (Somatom® Definition Edge, Siemens Healthineers) with a collimation of 128 × 0.6 mm (reconstruction in 1.5-mm in mediastinal setting and in 1-mm in lung setting) and a gantry rotation time of 280 ms. Tube voltage was selected (80 to 120 kVp) by an automated tube voltage selection (CARE kVp) associated with 40–80 mAs, based on body size. CT acquisitions were obtained from the lung apices to the bases in a single breath hold at maximum inspiration without ECG gating. Lung injuries were assessed in each lung lobe for the presence of either ground glass opacification (hazy areas of increased attenuation without obscuration of the underlying vasculature) or consolidation (homogeneous opacification with obscuration of the underlying vasculature) or both [5, 6]. Presence of ≥ 10-mm lymphadenopathy, nodules, pleural effusion, airway abnormalities were also recorded. Finally, the extent of deleterious lung damages and the number of lung lobes affected by the presence of consolidation was assessed in all patients by pairs of radiologists completed by a third independent reader in case of discrepancy, blinded to visual scale CAC scoring [1, 5].

### *2.3 Visual scale for CAC scoring*

Calcium scoring was performed independently of care by two expert radiologists in cardiothoracic imaging (E.M., G.S., with 32- and 7 years of experience, respectively) and blinded from all clinical data, biology and initial chest CT analysis. The two readers separately viewed the images on a high-spatial-resolution monitor with mediastinal setting and analyses were performed by using standard mediastinal settings (width, 350 Hounsfield unit [HU]; level, 50 HU). As previously described for non-ECG-gated CT done with various kVp [10, 12, 13], after a visual assessment of CAC, simple and representative of the whole coronary tree, readers provided a score using four categories as follows: none, mild, moderate and heavy CAC. Examples of such visual CAC scoring obtained in four Covid-19 patients are shown in **Figure 2**. The final visual score of CAC presented in the study was established and based on the results of the two radiologists, using a consensus reading for discordant opinions.

## 2.4 Statistical analysis

Continuous variables were expressed as means  $\pm$  standard deviations (SD) and ranges or medians (interquartile ranges [IQR]) and ranges, when appropriate. Discrete variables were expressed as raw numbers, proportions and percentages. The inter-rater agreement for visual CAC scoring between readers was calculated by using Cohen kappa coefficient ( $\kappa$ ) and considered substantial when between 0.6 and 0.80 and very good when between 0.81 and 1.0 [14].

Groups were compared by analysis of variance for continuous variables and  $\chi^2$  test for discrete variables. Hazard ratios (HR) were presented with their 95% confidence intervals (CI). Survival curves were estimated using the Kaplan Meier estimators and compared according to coronary calcifications using log rank tests. The rates of all-cause mortality at 6 months were analyzed according to classification of CAC scoring, and the impact of CAC was evaluated using a multivariable backward stepwise Cox analysis with a threshold of 0.20 for variable elimination. After exclusion of non-significant variables identified at univariable analysis, variables included in the final models were selected *ad hoc*, based on their physiological relevance and potential to be associated with outcomes; they comprised age, sex, major comorbidities, CAC categories, and CT variables. In the second model, the HS-sensitivity troponin I level available at admission was also added. A sensitivity analysis was further performed, focused on patients without known CHD before the current admission; because the population was smaller, CAC was scored into no or mild coronary calcifications, versus moderate or heavy coronary calcifications. All analyses were repeated using forward stepwise analysis to check the consistency of the results. Collinearity was tested by calculation of variance inflation factors. Statistical analyses were performed using IBM SPSS 26.0 (IBM SPSS Inc). For all analyses, two-sided *P* values  $<0.05$  were considered to indicate significant differences.

## 3. Results

### 3.1. Patient characteristics

All 169 COVID-19 patients who have signed informed consent with complete medical information and thoracic CT at admission were included for analysis. There were 118 men and

51 women with a mean age of 65.6 years  $\pm$  15.8 (SD) (range: 30–95 years); baseline characteristics are presented in **Table 1**. Dyspnea in 119 patients (70.4%) was the most common symptom, followed by chest pain (15/119; 8.9%). Hypertension (119/169; 70.4%), hypercholesterolemia (44/169; 26%), and diabetes (33/169; 19.5%) were the most common risk-factors. Previous myocardial infarction, cerebrovascular disease, and peripheral artery disease were found in 14 (8.3%), 2 (1.2%) and 7 (4.1%) patients, respectively; 149 patients (88.2%) had no previously known atherosclerotic cardiovascular disease (ASCVD). Other comorbidities and prior cardiovascular medications are listed in **Table 1**.

The proportion of no, mild, moderate, and heavy CAC were 37.9% (64/169), 24.9% (42/169), 15.4% (26/169), and 21.9% (37/169), respectively. Age increased with the degree of CAC. Initial disease presentation (*i.e.*, cough, dyspnea, fever, diarrhea, chest pain) was not different among CAC categories. Comorbidities, including hypertension, hypercholesterolemia, prior myocardial infarction, peripheral artery disease, chronic renal failure, and cancer were more present in patients with heavy CAC compared to other categories. Finally, aspirin, oral anticoagulant, statins, and beta-blockers were more prescribed before hospitalization in heavy CAC patients.

### *3.2 Laboratory and CT findings*

Laboratory findings are presented in **Table 1**. There was a gradual increase in creatinine, cardiac biomarkers, *i.e.*, Brain natriuretic peptide (BNP) and HS troponin I levels, with increasing CAC burden; D-dimer serum level was greater and hemoglobin serum level lower in patients with heavy CAC compared to those without CAC.

Chest CTs were performed during the first 24 hours after admission in 160/169 (94.7%) patients. The proportion of patients with bilateral pneumonia was 95.9% (162 patients), and with  $\geq 3$  lung lobes affected by consolidation in 47.9% (81 patients). No differences in proportion of patients with bilateral pneumonia or with number of lung lobes with consolidation  $\geq 3$  were observed between CAC categories.



### *3.3 Treatment and clinical outcomes*

In-hospital management and outcomes are detailed in **Table 2**. The median time from onset to admission was 7.0 days (IQR: 5.0–9.0; range: 3–11 days) and similar between the four CAC groups ( $P = 0.492$ ). Fifty-three patients (31.4%) were admitted to intensive care unit, with no differences among groups ( $P = 0.226$ ). No differences were observed between the four groups related to organ support (*i.e.*, invasive and non-invasive ventilation, continuous renal replacement therapy, and circulatory support), anticoagulant and antiviral therapies.

The median length of hospital stay was 8.0 days (IQR: 4.0–11.3; range: 2–20 days). Acute heart failure occurred in 10 patients (6.0%), mainly in patients with heavy CAC (5/37; 13.5%); ( $P = 0.007$ ). Arrhythmia was reported in 12 patients (12/169; 7.1%), similarly in all groups ( $P = 0.810$ ). Coronary angiogram was performed in only one patient.

### *3.4 Coronary calcifications and mortality*

During the follow-up, a total of 45 patients (26.6%) died at 6 months. Patient characteristics, clinical presentation and biological results according to 6-month vital status are detailed in Table 3 with comparison between alive and death subgroups of patients at univariable analysis. As shown in the Kaplan-Meier survival curves (**Figure 3**), mortality rate at six months increased with magnitude of CAC and was 7/64 (10.9%), 11/42 (26.2%), 10/26 (38.5%), 17/37 (45.9%) for no-CAC, mild-CAC, moderate-CAC and heavy-CAC groups, respectively ( $P = 0.001$ ).

By using multivariable cox regression analysis on mortality, the gradually increasing risk of death with increasing degree of CAC was still confirmed after adjustment for age, BMI, presence of ASCVD and diabetes, extension of lung damage at CT (**Table 4**). Other independent predictors of mortality were age, and 5 lung lobes affected by consolidation (*vs.* none).

When HS-troponin I levels obtained at admission, were associated to the degree of CAC in a second multivariable cox regression model, HS-troponin I levels were also associated with higher mortality rate (HR, 4.17; 95% CI: 1.60–10.82;  $P = 0.003$ ), but the gradually increasing risk of death with increasing degree of CAC was still confirmed. Furthermore, as shown in

**Figure 4**, no significant association was observed between either HS-troponin I levels at admission or peak HS-troponin I levels during hospitalization and CAC scoring.

In patients without previous CHD (154/169; 91%), the 6-month mortality rate increased from 10.9% (7/64) to 45.8% (11/24) ( $P = 0.001$ ) according to the magnitude of CAC categories (**Table 5**). After adjustment, in these patients presence of moderate or heavy CAC was associated with greater mortality rate (HR, 2.26; 95% CI: 1.09–4.69;  $P = 0.03$ ). At last (**Table 6**), the mortality rate increased according to CAC categories in patients below the median age (< 66 years) ( $P = 0.01$ ).

The inter-rater agreement for visual CAC scoring was very good with  $\kappa$  of 0.92 (95% CI: –).

## 4. Discussion

To our knowledge, the present study is the first to assess prospectively the relationship between coronary calcified plaque burden estimated by visual CAC scoring on low dose thoracic CT, which is part of the routine work-up of COVID-19 patients, and mortality at one month and 6 months during and after hospitalization of COVID-19 patients. The 37% prevalence of moderate or heavy CAC was high in this series of consecutive COVID-19 patient when only 11.8% patients had history of cardiovascular disease requiring specific preventive treatment. Patients with higher CAC burden had higher risks of death, independently of age, and cardiovascular risk factors. Importantly, the presence of moderate or heavy coronary artery calcifications was also an independent predictor of death in the subgroup of patients without known coronary artery disease. Furthermore, CAC burden was also associated with 6-month mortality independently of HS-troponin levels at admission. In a retrospective study including 332 hospitalized COVID-19 patients with a median follow-up of 12 days, patients with myocardial injury (HS-troponin I > 20 ng/L on admission) had a lower prevalence of a CAC score of zero (25%) compared to patients without myocardial injury (55%) ( $P < 0.001$ ) [15]. However, in this study, presence of CAC did not emerge as a predictor of myocardial injury or in-hospital mortality at multivariable analysis [15]. Such differences observed with our prospective study may be related to the effect of the duration of follow-up and the analysis using four categories, as it was essentially the patients with heavy CAC and moderate CAC who were significantly at high risk of mortality and not those with mild CAC. This is supported by

the results of another retrospective study in which only heavy CAC (> 400) was associated to the composite endpoint including in-hospital mortality and intensive care unit admission [16]. Finally, in two cross-sectional retrospective studies with small series of hospitalized patients older than 40 years the presence of CAC was also independently associated to the primary outcome defined by a composite endpoint associating the occurrence of mechanical noninvasive or invasive ventilation, or death within 30 days [17, 18]. All these preliminary results confirm that a simple analysis of coronary calcium load on CT performed to detect the extent of lung damage can help anticipate the mortality risk of the disease. The present study has also shown the absence of clear relationship between coronary artery plaque burden and myocardial injury. Indeed, myocardial injury, defined as an elevation of the peak of HS-troponin I level during hospitalization in COVID-19 patients, was frequently observed (19.7% and 27.8% in two recent reports) and associated with increased mortality [1, 2, 19, 20]. Furthermore, HS-troponin I levels during the stay were positively related to levels of C-reactive protein and BNP, suggesting an association between myocardial injury, severity of inflammation and ventricular dysfunction [1, 2, 4]. Thus, our results support the hypothesis that myocardial injury may be related to direct cardiomyocyte damage, systemic inflammation and interstitial myocardial fibrosis, as previously suggested [4, 19].

Although the degree of CAC increases with age, and cardiovascular risk factors or history, it provides prognostic value independently of these. Since the visual CAC scoring can be easily obtained after non-gated low dose CT, the key method confirming the diagnosis of pneumonia in COVID 19 on admission to hospital, preventive strategies could be proposed based on the CAC category. The results of the present study in a COVID-19 patient population are not surprising, because it has already been widely shown in several general population studies that CAC observed on CT outperforms conventional clinical risk factors (diabetes, obesity, hypertension) in predicting mortality [9, 11].

Including statin treatment as a preventive treatment in case of moderate or heavy CAC burden, independently of conventional risk factors, possibly in association with either anti platelet therapy, betablockers and/or angiotensin converting enzyme inhibitors/angiotensin receptor blockers could be proposed. Such a strategy is partially supported by the results of recent retrospective studies [21, 22]. In one study including 13,981 patients with COVID-19, of whom 1,219 received statins, the risk for 28-day mortality was 5.2% and 9.4% in the match statin and

non-statin groups, respectively (adjusted HR of 0.58; 95% CI: 0.43–0.80) [21]. However, adding angiotensin converting enzyme inhibitors/angiotensin receptor blockers did not affect statin associated outcome [21]. In the present study, in the 20 patients with clinical history of ASCVD, significantly lower 6-month mortality was found but all of them were treated by both statins and angiotensin converting enzyme inhibitors/angiotensin receptor blockers. However, in the overall population such treatments were not significantly associated with 6-month mortality. These results suggest that there is a need to evaluate the potential efficacy of these treatments in COVID-19 through large randomized trials. In this regard, targeting populations using visual CAC scoring on non-gated thoracic CT might be an attractive option, probably more than a selection process based upon HS-troponin levels, which may reflect myocarditis, a condition where most cardiovascular prevention medications are unlikely to be beneficial, as well as myocardial injury related to coronary atherosclerosis. Alternatively, dedicated acquisition with ECG gating at a fixed 120 kVp could be coupled with the pulmonary study in order to obtain more robust CAC indices (Agatston score), which have been widely used and validated in the determination of cardiovascular risk in the general population [8-11].

This study has some limitations. First, due to limited sample size, this study should be considered as a pilot study showing a significant association between atheromatous burden of coronary artery and mortality in COVID-19 patients. Second, CAC estimates were done visually and subjectively because non-gated CT chest images with acquisition parameters not recommended to perform Agatston score were used. However, CAC visual scoring was done by two independent readers blinded to patient data and agreement between readers was very good. In addition, using non-ECG gated low dose CT performed at 120 kVp for lung cancer screening in heavy smokers, such visual assessment of CAC was found equivalent to Agatston score and strongly associated with CHD death and all-cause mortality [10]. Regarding the future of CT analysis for estimating prognosis of COVID-19 patients, it may be assumed that automated analysis with [24] or without [25] the help of artificial intelligence will be useful to quantify residual pulmonary functional zones based on density of opacity and normal lung areas and CAC score in the same time since the performance of recent 3D U-Net models to detect dense segmentation maps are very accurate in predicting patients CAC score risk across the range of different types of CT examinations [26, 27].

In conclusion, using conventional low-dose non-ECG-gated thoracic CT during the initial pulmonary assessment of COVID-19 patients at admission, a high prevalence of moderate and heavy CAC was observed, even in patients without known CHD. A simple CAC visual score obtained on the non-gated thoracic CT was found to be an independent predictor of 6-month mortality and could easily be used systematically in the initial evaluation of hospitalized patients when chest CT is performed. The therapeutic impact of such risk detection remains to be demonstrated, but the protection by statins, which is currently being evaluated and promising, underlines the importance of defining the subjects most at risk. The decision support that this detection of CAC could provide at the time of hospital admission also remains to be demonstrated.

## **Acknowledgments**

The authors would like to thank the other investigators of the cohort, all the staff of the radiology department and the clinical research unit without whom this work could not have been done, but also all the staff of the many departments who worked particularly hard during this difficult and very special period to maintain good quality of care in our institution.

## **Human rights**

The authors declare that the work described has been carried out in accordance with the Declaration of Helsinki of the World Medical Association revised in 2013 for experiments involving humans.

The authors declare that the work described has not involved experimentation on humans.

## **Informed consent and patient details**

The authors declare that this report does not contain any personal information that could lead to the identification of the patients.

## **Disclosure of interest**

The authors declare that they have no competing interest.

## **Funding**

This work did not receive any grant from funding agencies in the public, commercial, or not-for-profit sectors.

## **Author contributions**

All authors attest that they meet the current International Committee of Medical Journal Editors (ICMJE) criteria for Authorship.

## REFERENCES

1. Zhou F, Yu T, Du R, Fan G, Liu Y, Liu Z, et al. Clinical course and risk factors for mortality of adult inpatients with COVID-19 in Wuhan, China: a retrospective cohort study. *Lancet* 2020;395:1054–1062.
2. Shi S, Qin M, Shen B, Cai Y, Liu T, Yang F, et al. Association of cardiac injury with mortality in hospitalized patients with COVID-19 in Wuhan, China. *JAMA Cardiol* 2020;5:802–810.
3. Guo T, Fan Y, Chen M, Wu X, Zhang L, He T, et al. Cardiovascular implications of fatal outcomes of patients with coronavirus disease 2019 (COVID-19). *JAMA Cardiol* 2020; 5:811–818.
4. Bonow RO, Fonarow GC, O’Gara PT, Yancy CW. Association of coronavirus disease 2019 (COVID-19) with myocardial injury and mortality. *JAMA Cardiol* 2020;5:751–753.
5. Charpentier E, Soulat G, Fayol A, Hernigou A, Livrozet M, et al. Visual lung damage CT score at hospital admission of COVID-19 patients and 30-day mortality. *Eur Radiol* 2021;29;1–10.
6. Neveu S, Saab I, Dangeard S, Bennani S, Tordjman M, Chassagnon G, et al. Incidental diagnosis of Covid-19 pneumonia on chest computed tomography. *Diagn Interv Imaging* 2020;101:457–461.
7. Revel M-P. COVID-19 pneumonia: The fight must go on. *Diagn Interv Imaging* 2021;102:61–62.
8. Greenland P, LaBree L, Azen SP, Doherty TM, Detrano RC. Coronary artery calcium score combined with Framingham score for risk prediction in asymptomatic individuals. *JAMA* 2004;291:210–215.
9. Sandfort V, Bluemke DA. CT calcium scoring: history, current status and outlook. *Diagn Interv Imaging* 2017;98:3–10.
10. Chiles C, Duan F, Gladish GW, Ravenel JG, Baginski SG, Snyder BS, et al. Association of coronary artery calcification and mortality in the National Lung Screening Trial: a comparison of three scoring methods. *Radiology* 2015;276:82–90.

11. Nasir K, Rubin J, Blaha MJ, Shaw LJ, Blankstein R, Rivera JJ, et al. Interplay of coronary artery calcification and traditional risk factors for the prediction of all-cause mortality in asymptomatic Individuals. *Circulation* 2012;5:467–473.
12. Xie X, Zhao Y, Bock GH, Jong PA, Mali WP, Oudkerk M, et al. Validation and prognosis of coronary artery calcium scoring in nontriggered thoracic computed tomography: systematic review and meta-analysis. *Circ Cardiovasc Imaging* 2013;6:514–521.
13. Hecht HS, Cronin P, Blaha MJ, Budoff MJ, Kazerooni EA, Narula J, et al. 2016 SCCT/STR guidelines for coronary artery calcium scoring of noncontrast noncardiac chest CT scans: a report of the Society of Cardiovascular Computed Tomography and Society of Thoracic Radiology. *J Cardiovasc Comput Tomogr* 2017;11:74–84.
14. Benchoufi M, Matzner-Lober E, Molinari N, Jannot AS, Soyer P. Interobserver agreement issues in radiology. *Diagn Interv Imaging* 2020;101:639–641.
15. Ferrante G, Fazzari F, Cozzi O, Maurina M, Bragato R, D’Orazio F, et al. Risk factors for myocardial injury and death in patients with COVID-19: insights from a cohort study with chest computed tomography. *Cardiovasc Res* 2020;116:2239–2246.
16. Nai Fovino L, Cademartiri F, Tarantini G. Subclinical coronary artery disease in COVID-19 patients. *Eur Heart J Cardiovasc Imaging* 2020;21:1055–1056.
17. Dillinger JG, Benmessaoud FA, Pezel T, Voicu S, Sideris G, Chergui N, et al. Coronary artery calcification and complications in patients with COVID-19. *JACC Cardiovasc Imaging* 2020;13:2468–2470.
18. Zimmermann GS, Fingerle AA, Müller-Leisse C, Gassert F, Schacky CE, Ibrahim T, et al. Coronary calcium scoring assessed on native screening chest CT imaging as predictor for outcome in COVID-19: an analysis of a hospitalized German cohort. *PLoS One* 2020;15:e0244707.
19. Liu PP, Blet A, Smyth D, Li H. The Science Underlying COVID-19: Implications for the Cardiovascular System. *Circulation* 2020;142:68–78.
20. Guo T, Fan Y, Chen M, Wu X, Zhang L, He T, et al. Cardiovascular Implications of fatal outcomes of patients with coronavirus disease 2019 (COVID-19). *JAMA Cardiol* 2020;5:811–818.



21. Zhang XJ, Qin JJ, Cheng X, Shen L, Zhao YC, Yuan Y, et al. In-hospital use of statins is associated with a reduced risk of mortality among Individuals with COVID-19. *Cell Metab* 2020;32:176-187.e4.
22. Saeed O, Castagna F, Agalliu I, Xue X, Patel SR, Rochlani Y, et al. Statin use and in-hospital mortality in patients with diabetes mellitus and COVID-19. *J Am Heart Assoc* 2020;9:e018475.
23. Baron KB, Choi AD, Chen MY. Low Radiation Dose Calcium Scoring: Evidence and Techniques. *Curr Cardiovasc Imaging Rep* 2016;9:12.
24. Belfiore MP, Urraro F, Grassi R, Giacobbe G, Patelli G, Cappabianca S, et al. Artificial intelligence to codify lung CT in Covid-19 patients. *Radiol Med* 2020;125:500–504.
25. Colombi D, Bodini FC, Petrini M, Maffi G, Morelli N, Milanese G, et al. Well-aerated lung on admitting chest CT to predict adverse outcome in COVID-19 pneumonia. *Radiology* 2020;296:E86–E96.
26. van Velzen SGM, Lessmann N, Velthuis BK, Bank IEM, van den Bongard DHJG, Leiner T, et al. Deep learning for automatic calcium scoring in CT: validation using multiple cardiac CT and chest CT protocols. *Radiology* 2020;295:66–79.
27. Gogin N, Viti M, Nicodème L, Ohana M, Talbot H, Gencer U, et al. Automatic coronary artery calcium scoring from unenhanced-ECG-gated CT using deep learning. *Diagn Interv Imaging* 2021;doi: 10.1016/j.diii.2021.05.004.

## FIGURE LEGENDS

**Figure 1.** Study flow chart. CT indicates computed tomography ICU indicates intensive care unit; TR-PCR indicates reverse transcriptase-polymerase chain reaction testing.

**Figure 2.** Examples of the visual score of coronary artery calcification (CAC) with no CAC (A), mild CAC (B), moderate CAC(C) and heavy CAC (D) with images obtained with non-ECG-gated low dose CT with mediastinal setting (first row) and lung setting (second row) in four COVID-19 patients.

**Figure 3.** Graph shows 6-month survival rate according to magnitude of coronary artery calcification (CAC) scoring.

**Figure 4.** Diagram shows associations between coronary artery calcification scoring and either high-sensitivity (HS)-troponin I at admission (A) or peak HS-troponin I during hospitalization (B) in alive (in green) and death (in red) patients at 6 months.

**Table 1.** Baseline characteristics and laboratory and radiographic findings of 169 patients with COVID-19.

**Table 2.** Management and outcomes.

**Table3.** Baseline clinical and biological characteristics of the overall population (n = 169) in alive and death subgroups of patients at 6 months.

**Table 4.** Multivariable Cox regression analysis on mortality at 90 days.

**Table 5.** Survival status at 6-month follow-up according to the presence of coronary artery disease in patients without known coronary artery disease.

**Table 6.** Survival status at 6-month follow-up according to coronary artery calcification classification and age.

260 consecutive patients hospitalized with positive COVID-19 RT-PCR between March 13<sup>th</sup> and April 1<sup>st</sup> 2020

176 eligible patients with chest CT within 24h from admission

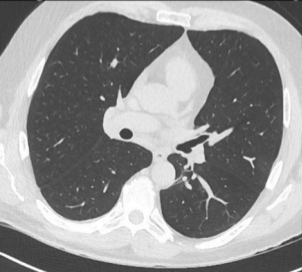
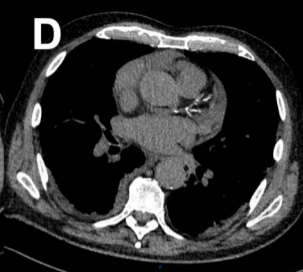
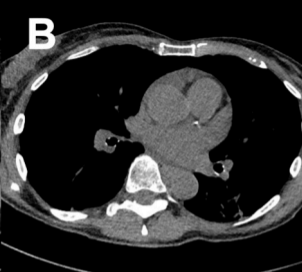
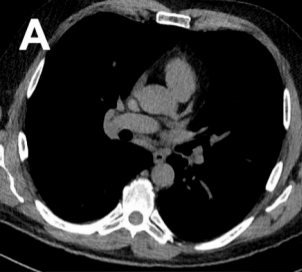
169 patients finally recruited and analyzed with follow-up ending September 30<sup>th</sup> 2020

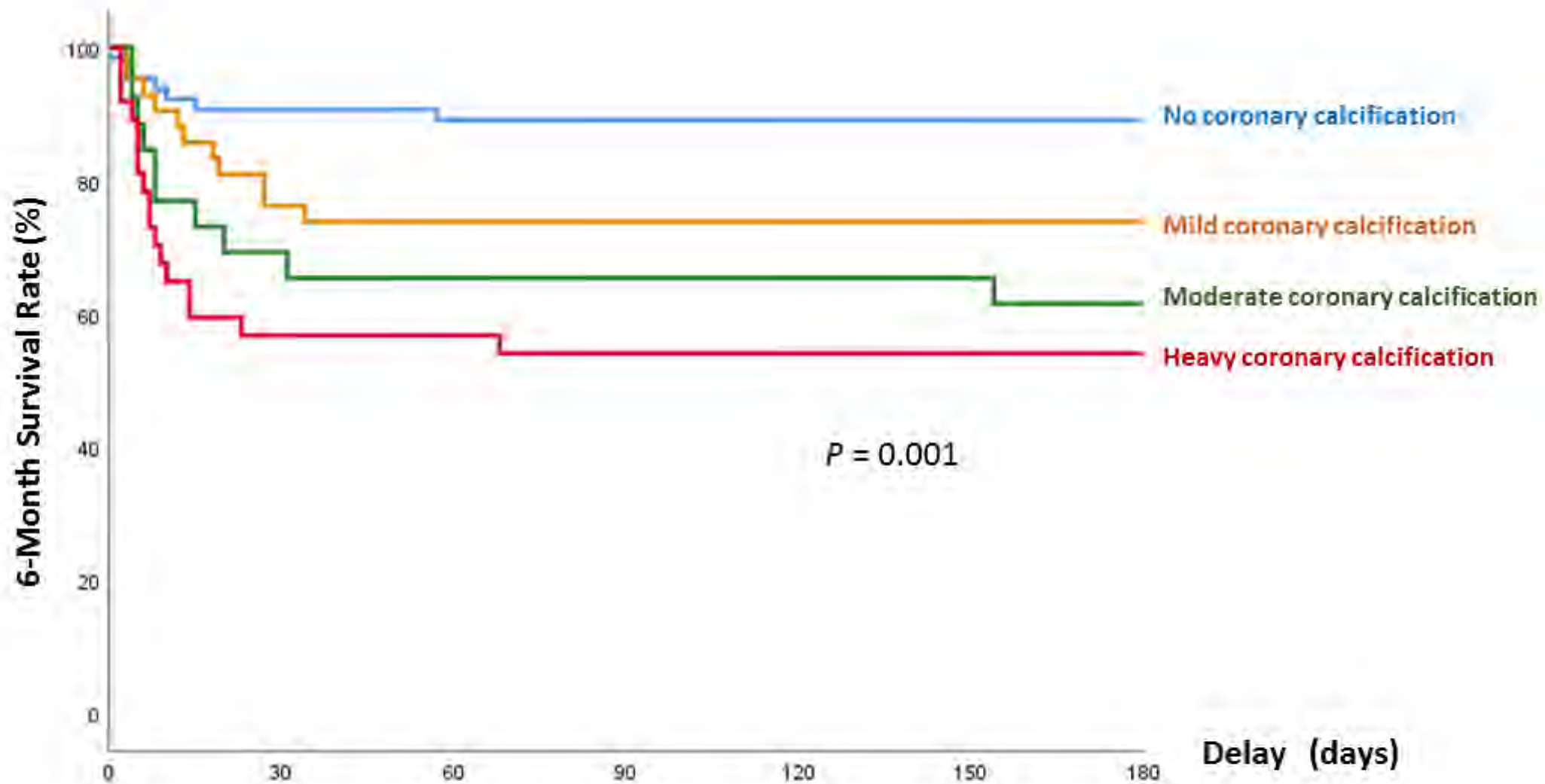
53 patients with secondary admission in ICU unit

116 patients admitted in conventional unit

Not eligible patients (n = 84; 32.3%)  
45 patients with direct ICU admission without CT  
39 patients without CT within 24h from admission

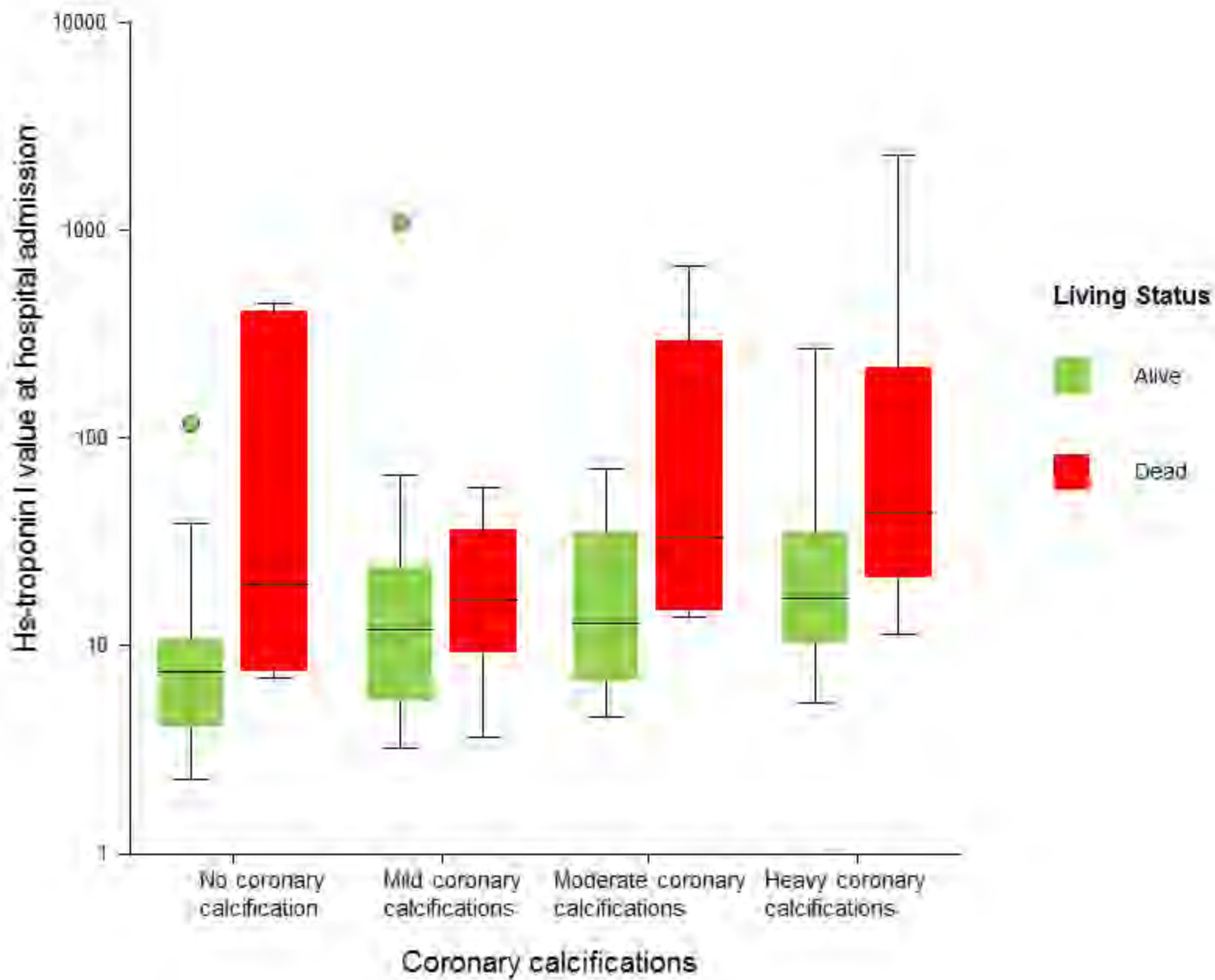
Excluded patients (n = 7; 3.9%) due to transfer to another institution within 48 h from admission

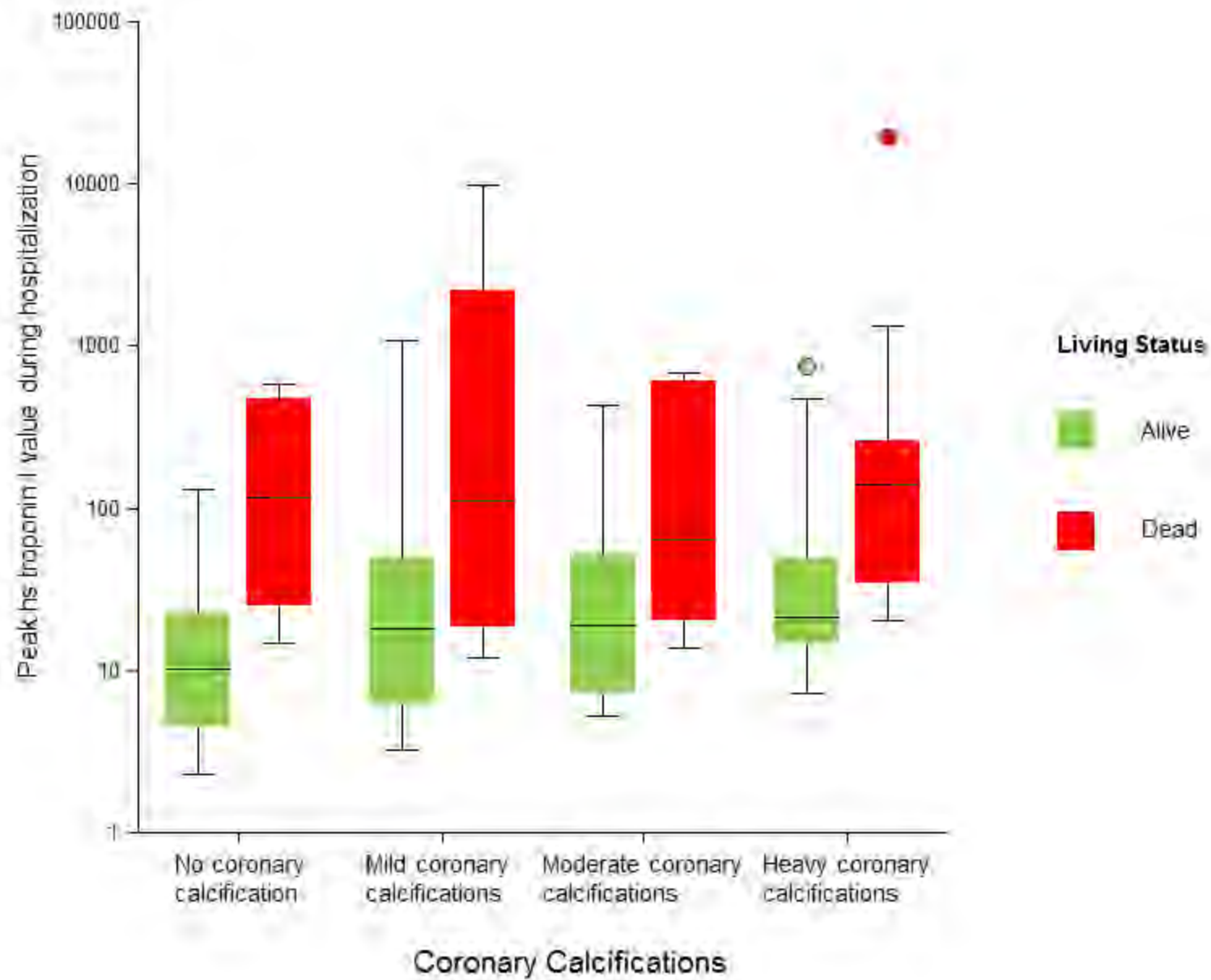




**Number at risk :**

No coronary calcification	64	58	57	57	57	57	57
Mild coronary calcification	42	32	31	31	31	31	31
Moderate coronary calcification	26	18	17	17	17	17	16
Heavy coronary calcification	37	21	21	20	20	20	20





Number of Patients	Overall Population n = 169	No coronary calcification n = 64	Mild coronary calcifications n = 42	Moderate coronary calcifications n = 26	Heavy coronary calcifications n = 37	P value
Age (year)	65.6 ± 15.8 [30–95]	52.7 ± 12.3 [30–81]	69.3 ± 12.5 [39–89]	72.9 ± 12.5 [51–94]	78.4 ± 10.0 [54–95]	< <b>0.001</b>
Male	118 (69.8%)	44 (68.8%)	24 (57.1%)	19 (73.1%)	31 (83.8%)	0.078
BMI (kg/m <sup>2</sup> )	26.8 ± 5.4 [18.7–52.0]	27.9 ± 6.2 [19.8–44]	26.0 ± 4.0 [19.1–36.0]	26.6 ± 6.7 [18.7–52.0]	25.8 ± 3.8 [18.7–38.1]	0.155
<b>Risk factors</b>						
Hypertension	78 (46.2%)	16 (25.0%)	17 (40.5%)	18 (69.2%)	27 (73.0%)	< <b>0.001</b>
Diabetes	33 (19.5%)	8 (12.5%)	10 (23.8%)	5 (19.2%)	10 (27.0%)	0.280
Hyper-cholesterolemia	44 (26.0%)	7 (10.9%)	9 (21.4%)	10 (38.5%)	18 (48.6%)	< <b>0.001</b>
Current smoking	8 (4.7%)	4 (6.3%)	1 (2.4%)	2 (7.4%)	1 (7.7%)	0.626
<b>Medical history</b>						
Prior MI	14 (8.3%)	0 (0.0%)	0 (0.0%)	2 (7.7%)	12 (32.4%)	< <b>0.001</b>
Prior PCI	12 (7.1%)	0 (0.0%)	0 (0.0%)	2 (7.7%)	10 (27.0%)	< <b>0.001</b>
Prior CABG	3 (1.8%)	0 (0.0%)	0 (0.0%)	0 (0.0%)	3 (8.1%)	<b>0.025</b>
History of heart failure	5 (3.0%)	1 (1.6%)	0 (0.0%)	1 (3.8%)	3 (8.1%)	0.141
History of stroke	2 (1.2%)	1 (1.6%)	1 (2.4%)	0 (0.0%)	0 (0.0%)	0.578
Peripheral artery disease	7 (4.1%)	0 (0.0%)	1 (2.4%)	0 (0.0%)	6 (16.2%)	< <b>0.001</b>
Chronic renal failure	21 (12.4%)	4 (6.3%)	2 (4.8%)	5 (19.2%)	10 (27.0%)	<b>0.006</b>
COPD	12 (7.1%)	1 (1.6%)	3 (7.1%)	2 (7.7%)	6 (16.2%)	0.051
Cancer	37 (21.9%)	9 (14.1%)	9 (21.4%)	5 (19.2%)	14 (37.8%)	<b>0.048</b>
<b>Prior medications</b>						
Aspirin	32 (18.9%)	3 (4.7%)	6 (14.3%)	7 (26.9%)	16 (43.2%)	< <b>0.001</b>
Oral anticoagulant	23 (13.6%)	3 (4.7%)	6 (14.3%)	4 (15.4%)	10 (27.0%)	<b>0.016</b>
Statins	34 (20.1%)	6 (9.4%)	7 (16.7%)	7 (26.9%)	14 (37.8%)	<b>0.005</b>
Betablockers	34 (20.1%)	7 (10.9%)	3 (7.1%)	5 (19.2%)	19 (51.4%)	< <b>0.001</b>
Calcium channel blockers	30 (17.8%)	9 (14.1%)	7 (16.7%)	3 (11.5%)	11 (29.7%)	0.204
ACE inhibitor or ARB	49 (29.0%)	9 (14.0%)	11 (26.2%)	12 (46.2%)	17 (45.9%)	<b>0.001</b>
Diuretics	32 (18.9%)	7 (10.9%)	5 (11.9%)	9 (34.6%)	11 (29.7%)	<b>0.012</b>
<b>Clinical presentation</b>						
Temperature (°C)	37.9 ± 1.0 [35.7–40.3]	37.9 ± 1.0 [35.9–40.3]	38.0 ± 1.0 [36.4–39.9]	38.0 ± 0.8 [36.3–39.3]	37.7 ± 0.9 [35.7–39.4]	0.585
Fever	77 (45.6%)	29 (45.3%)	19 (45.2%)	14 (53.8%)	15 (40.5%)	0.777
Heart rate (bpm)	91.8 ± 18.9 [50–150]	98.5 ± 18.6 [62–150]	92.7 ± 18.6 [62–150]	88.7 ± 19.3 [50–117]	81.6 ± 14.7 [54–114]	< <b>0.001</b>



SBP (mmHg)	133.0 ± 22.3 [73–208]	130.0 ± 18.0 [85–165]	135.9 ± 23.1 [83–193]	135.6 ± 19.8 [100–184]	133.0 ± 28.9 [73–208]	0.524
DBP (mmHg)	77.5 ± 15.4 [36–142]	80.4 ± 11.0 [50–103]	79.2 ± 19.6 [36–142]	74.7 ± 12.6 [55–100]	72.5 ± 17.2 [36–101]	0.051
Respiratory rate	22.0 ± 6.8 [14–50]	23.3 ± 8.0 [14–50]	21.0 ± 6.3 [14–41]	22.2 ± 5.7 [16–38]	20.9 ± 5.4 [14–35]	0.230
Dyspnea	119 (70.4%)	50 (78.1%)	28 (66.7%)	19 (73.1%)	22 (59.5%)	0.228
Cough	89 (52.7%)	36 (56.3%)	21 (50.0%)	14 (53.8%)	18 (48.6%)	0.872
Chest pain	15 (8.9%)	9 (14.1%)	4 (9.5%)	1 (3.8%)	1 (2.7%)	0.157
Diarrhea	37 (21.9%)	16 (25.0%)	13 (31.0%)	3 (11.5%)	5 (13.5%)	0.137
<b>Laboratory findings at admission, median (IQR)</b>						
Neutrophils (×10 <sup>6</sup> )	4635 (3125; 6498) n=168	4720 (2855; 6760) n=64	4030 (3015; 6270) n=42	5235 (3843; 6978) n=26	4450 (3658; 6255) n=36	0.616
Lymphocytes (×10 <sup>6</sup> /L)	975 (643; 1308)	1050 (780; 1360)	1045 (748; 1310)	770 (503; 1150)	760 (498; 1620)	0.511
Platelets (×10 <sup>9</sup> /L)	182 (141; 241) n=168	204 (149; 255) n=63	173 (137; 232) n=42	168 (139; 238) n=26	170 (139; 255) n=37	0.327
Creatinine (µg/L)	81 (66; 110)	74.5(63; 89)	79(66; 96)	92(65; 124)	107(75; 170)	<b>&lt;0.001</b>
Hemoglobin (g/dL)	13.7 (12.4; 14.8)	13.9(12.8; 14.9)	13.7(12.5; 14.9)	14.0 (13.0; 14.9)	12.7(10.7; 14.2)	<b>0.008</b>
High-sensitivity troponin (ng/L)	12.5(6.4; 27.4)	7.9(4.4; 13.5)	12.2(5.7; 24.9)	15.9(9.5; 47.8)	31.0(13.9; 50.5)	0.087
Brain natriuretic peptide (ng/L)	47 (18-159) (n = 155)	21 (13-49) n = 57	50 (19-160) n = 39	45 (20-185) n = 24	165 (58-442) n = 35	<b>&lt; 0.001</b>
D-Dimers, (ng/mL)	1040 (674; 1647) n = 154	1009 (629; 1512) n = 61	871 (663; 1635) n = 37	858 (598; 1338) n = 24	1459 (804; 2807) n = 32	<b>0.003</b>
C-reactive protein (mg/L)	97.5 (52.0-139.3)	97.0 (28.2-155.0)	76.1 (48.8-115.5)	107.3 (58.5-142.5)	99.3 (57.4-139.0)	0.657
<b>Computed tomography findings</b>						
Number of lung lobes with consolidation						
<3	88 (52.1%)	33 (51.6%)	25 (59.5%)	11 (42.3%)	19 (51.4%)	0.584
≥ 3	81 (47.9%)	31 (48.4%)	17 (40.5%)	15 (57.7%)	18 (48.6%)	
Bilateral consolidation	162 (95.9%)	61 (95.3%)	40 (95.2%)	26 (100%)	35 (94.6%)	0.813

Quantitative variables are expressed as mean ± standard deviations with range in brackets or as medians with interquartile ranges in parentheses. Qualitative variables are expressed as raw numbers with percentages in parentheses. ACE, angiotensin-converting enzyme; ARB, angiotensin receptor blockers; BMI, body mass index; CABG, coronary artery bypass grafting; COPD, chronic obstructive pulmonary disease; DBP, diastolic blood pressure; IQR, interquartile range; MI, myocardial infarction; PCI, percutaneous coronary intervention; SBP, systolic blood pressure. Bold indicates significant *P* value.

	<b>Overall Population</b> (n=169)	<b>No coronary calcification</b> (n=64)	<b>Mild coronary calcifications</b> (n=42)	<b>Moderate coronary calcifications</b> (n=26)	<b>Heavy coronary calcifications</b> (n=37)	<b>P value</b>
Time from symptom onset to admission days, median [IQR]	7.0 (5.0; 9.0)	7.0 (5.0; 9.0)	7.0 (5.0-10.0)	6.5 (3.8; 9.3)	7.0 (4.0; 9.5)	0.492
Admission in ICU	53 (31.4%)	21 (32.8%)	17 (40.5%)	8 (30.8%)	7 (18.9%)	0.226
<b>Treatment</b>						
Non-invasive ventilation	5 (3.6%)	1 (1.6%)	2 (4.8%)	2 (7.7%)	1 (2.7%)	0.539
Invasive mechanical ventilation	36 (21.3%)	17 (26.6%)	8 (19.0%)	4 (15.4%)	7 (18.9%)	0.604
Prone position	21 (12.4%)	10 (15.6%)	5 (11.9%)	2 (7.7%)	4 (10.8%)	0.735
Continuous renal replacement therapy	15 (8.9%)	6 (9.4%)	4 (9.5%)	3 (11.5%)	2 (5.4%)	0.829
Circulatory support	2 (1.2%)	2 (3.1%)	0 (0.0%)	0 (0.0%)	0 (0.0%)	0.269
Preventive ACT	108 (64.3%)	41 (65.1%)	28 (66.7%)	17 (65.4%)	22 (59.5%)	0.916
Curative ACT	54 (32%)	17 (26.6%)	13 (31.0%)	9 (34.6%)	15 (40.5%)	0.529
Antiviral treatment	21 (12.4%)	11 (17.2%)	3 (7.1%)	2 (7.7%)	5 (13.5%)	0.375
<b>Clinical outcomes</b>						
Acute heart failure	10 (6.0%)	0 (0.0%)	4 (9.5%)	1 (3.8%)	5 (13.5%)	<b>0.007</b>
Arrhythmia	12 (7.1%)	4 (6.3%)	4 (9.5%)	1 (3.8%)	3 (8.1%)	0.810
Discharged	125 (74.0%)	57 (89.0%)	31 (73.8%)	17 (65.4%)	20 (54.1%)	<b>0.001</b>
Death at 30-days	41 (24.3%)	6 (9.4%)	10 (23.8%)	9 (34.6%)	16 (43.2%)	<b>0.001</b>
Death at 6-months	45 (26.6%)	7 (10.9%)	11 (26.2%)	10 (38.5%)	17 (45.9%)	<b>0.001</b>

Quantitative variables are expressed as medians with interquartile ranges in parentheses. Qualitative variables are expressed as raw numbers with percentages in parentheses;  
ACT Anticoagulant therapy; ICU, intensive care unit; IQR, interquartile range  
Bold indicates significant *P* value.

	Overall Population n=169	Alive n=124	Death n=45	<i>P</i> value
Age (year)	65.6 ± 15.8 [30–95]	62.5 ± 15.2 [30–95]	73.9 ± 14.6 [41–93]	< <b>0.001</b>
Male	118 (69.8%)	86 (69.3%)	32 (71.1%)	0.826
BMI (kg/m <sup>2</sup> )	26.8±5.4 [18.7–52.0]	26.7 ± 4.8 [19.1–43.3]	27.0 ± 6.5 [18.7–52.0]	0.682
ICU hospitalization	53 (31.4%)	29 (23.4%)	24 (53.3%)	< <b>0.001</b>
<b>Risk factors</b>				
Hypertension	78 (46.2%)	53 (42.7%)	25 (55.6%)	0.139
Diabetes	33 (19.5%)	26 (21.0%)	7 (15.6%)	0.432
Hypercholesterolemia	44 (26.0%)	32 (25.8%)	12 (26.7%)	0.910
<b>Medical history</b>				
Prior MI	14 (8.3%)	8 (6.4%)	6 (13.3%)	0.169
Prior PCI	12 (7.1%)	8 (6.5%)	4 (8.9%)	0.593
Prior CABG	3 (1.8%)	1 (0.8%)	2 (4.4%)	0.143
History of heart failure	5 (3.0%)	3 (2.4%)	2 (4.4%)	0.509
History of stroke	2 (1.2%)	2 (1.6%)	0 (0.0%)	0.264
History of AF	17 (10.1%)	10 (8.1%)	7 (15.6%)	0.169
Peripheral artery disease	7 (4.1%)	6 (4.8%)	1 (2.2%)	0.422
Chronic renal failure	21 (12.4%)	12 (9.7%)	9 (20.0%)	0.072
COPD	12 (7.1%)	6 (4.8%)	6 (13.4%)	0.057
Cancer	37 (21.9%)	19 (15.4%)	18 (40.0%)	<b>0.001</b>
<b>Prior medications</b>				
Aspirin	32 (18.9%)	24 (19.4%)	8 (17.8%)	0.817
Oral anticoagulant	23 (13.6%)	12 (9.7%)	11 (24.4%)	0.013
Statins	34 (20.1%)	26 (21.0%)	8 (17.8%)	0.647
Betablockers	34 (20.1%)	21 (16.9%)	13 (28.9%)	0.086
Calcium channel blockers	30 (17.8%)	20 (16.1%)	10 (22.2%)	0.359
ARB	36 (21.3%)	23 (18.5%)	13 (28.9%)	0.146
ACE inhibitors	13 (7.7%)	9 (7.3%)	4 (8.9%)	0.728

Spirolactone	9 (5.3%)	6 (4.9%)	3 (6.7%)	0.647
Diuretics	32 (18.9%)	23 (18.5%)	9 (20.0%)	0.831
<b>Clinical presentation</b>				
Temperature ( °C)	37.9 ± 1.0 [35.7–40.3]	37.9 ± 0.9 [35.9–40.3]	37.8 ± 1.0 [35.7–39.9]	0.763
Fever	77 (45.6%)	55 (44.3%)	22 (48.9%)	0.600
Heart rate (bpm)	91.8 ± 18.9 [50–150]	93.0 ± 18.1 [50–150]	88.7 ± 20.9 [55–143]	0.079
SBP (mmHg)	133.0 ± 22.3 [73–208]	132.9 ± 19.9 [73–193]	133.3 ± 28.0 [79–208]	0.929
DBP (mmHg)	77.5 ± 15.4 [36–142]	79.0 ± 15.7 [36–142]	73.4 ± 13.9 [49–101]	<b>0.031</b>
Respiratory rate	22.0 ± 6.8 [14–50]	21.0 ± 5.9 [14–45]	24.9 ± 8.0 [14–50]	<b>0.001</b>
SatO <sub>2</sub> (%)	92.0 ± 7.4 [28–100]	93.4 ± 4.2 [77–100]	88.2 ± 11.9 [28–100]	<b>0.001</b>
Dyspnea	119 (70.4%)	82 (66.1%)	37 (82.2%)	0.042
CT lobes with consolidation ≥3	81 (47.9%)	54 (43.5%)	27 (60.0%)	0.058
Cough	89 (52.7%)	68 (54.8%)	21 (46.7%)	0.347
Chest pain	15 (8.9%)	13 (10.5%)	2 (4.4%)	0.222
Diarrhea	37 (21.9%)	28 (22.6%)	9 (20.0%)	0.719
<b>Biological data</b>				
Neutrophil count (x10 <sup>6</sup> /L)	4635.0 (3125.0; 6497.5) n = 168	4290.0 (2980.0; 6330.0) n = 121	5360.0 (3815.0; 7980.0) n = 46	<b>0.022</b>
Lymphocytes (×10 <sup>6</sup> /L)	975.0 (642.5; 1307.5)	1000.0 (750.0; 1310.0)	770.0 (480.0; 1385.0)	<b>0.010</b>
Platelets (×10 <sup>9</sup> /L)	182.0 (141.3; 240.8) n = 168	195.0 (143.0; 250.0) n = 127	45.0 (139.5; 219.5) n = 41	0.351
Creatinine (µg/L)	81.0 (66.0; 110.0)	79.0 (64.2; 97.7)	104.0 (72.0; 137.0)	<b>0.032</b>
Hemoglobin (g/dL)	13.7 (12.4; 14.8)	13.9 (12.8; 14.9)	13.0 (11.3; 14.0)	<b>0.001</b>
High-sensitivity troponin I (ng/L)	12.5 (6.4; 27.4)	9.45 (5.2; 19.6)	27.95 (13.9; 71.0)	<b>&lt;0.001</b>
Brain natriuretic peptide (ng/L)	47.0	31.0	113.5	<b>&lt; 0.001</b>

	(18.0; 159.0) n = 155	(15.0; 87.0) n = 117	(48.2; 264.2) n = 38	
C-reactive protein (mg/L)	97.5 (52.0; 139.3)	86.0 (39.0; 128.3)	119.0 (72.0; 188.1)	<b>0.002</b>
D-dimer (µg/mL)	1118 (680.5; 1806) n = 154	1006 (630; 1658) n = 116	1454 (834; 2538) n = 38	<b>0.004</b>

Quantitative variables are expressed as mean  $\pm$  standard deviations with range in brackets or as medians with interquartile ranges in parentheses. Qualitative variables are expressed as raw numbers with percentages in parentheses. ACE, angiotensin-converting enzyme; ARB, angiotensin receptor blockers; BMI, body mass index; CABG, coronary artery bypass grafting; COPD, chronic obstructive pulmonary disease; DBP, diastolic blood pressure; IQR, interquartile range; MI, myocardial infarction; PCI, percutaneous coronary intervention; SBP, systolic blood pressure. Bold indicates significant *P* value

<b>Variable</b>	<b>Hazard ratio (95% CI)</b>	<b>P value</b>
Age(year)	1.04 (1.00-1.07)	<b>0.03</b>
BMI	1.07 (0.998-1.14)	0.06
ASCVD	0.50 (0.19-1.31)	0.16
Diabetes	0.47 (0.20-1.08)	0.08
Coronary calcifications		
None	-	-
Mild	2.23 (0.73-6.87)	0.16
Moderate	2.78 (0.85-9.07)	0.09
Heavy	5.38 (1.57-18.40)	<b>0.007</b>
Number of lung lobes with consolidation		
0	-	-
1	0.80 (0.21-3.02)	0.74
2	0.89 (0.27-2.93)	0.85
3	1.62 (0.55-4.78)	0.38
4	0.72 (0.22-2.36)	0.58
5	2.40 (1.05-5.52)	<b>0.04</b>

ASCVD, atherosclerotic cardiovascular disease; BMI, body mass index; CI, confidence interval; COPD, chronic obstructive pulmonary disease.  
 Bold indicates significant *P* value

	<b>Overall population (n = 154)</b>	<b>No coronary calcification (n = 64)</b>	<b>Mild coronary calcifications (n = 42)</b>	<b>Moderate coronary calcifications (n = 24)</b>	<b>Heavy coronary calcifications (n = 24)</b>	<b><i>P</i> value</b>
<b>No coronary artery disease</b>						<b>0.001</b>
No death	116 (75.3%)	57 (89.1%)	31 (73.8%)	15 (62.5%)	13 (54.2%)	
Death	38 (24.7%)	7 (10.9%)	11 (26.2%)	9 (37.5%)	11 (45.8%)	

Values are expressed as raw number; numbers in parentheses are percentages

Bold indicates significant *P* value

	<b>Overall population (n = 169)</b>	<b>No coronary calcification (n = 64)</b>	<b>Mild coronary calcifications (n = 42)</b>	<b>Moderate coronary calcifications (n = 26)</b>	<b>Heavy coronary calcifications (n = 37)</b>	<b><i>P</i> value</b>
<b>Age ≥ 66 years</b>						<b>0.316</b>
No death	58 (66.0%)	8 (80.0%)	20 (71.4%)	13 (72.2%)	17 (53.2%)	
Death	30 (34.0%)	2 (20.0%)	8 (28.6%)	5 (27.8%)	15 (46.8%)	
<b>Age &lt; 66 years</b>						<b>0.015</b>
No death	67 (82.7%)	49 (90.7%)	11 (78.6%)	4 (50.0%)	3 (60.0%)	
Death	14 (17.3%)	5 (9.3%)	3 (21.4%)	4 (50.0%)	2 (40.0%)	

Values are expressed as raw number; numbers in parentheses are percentages

Bold indicates significant *P* value