



HAL
open science

Gaze and steering strategies while driving around bends with shoulders

Sami Mecheri, Régis Lobjois, Franck Mars

► **To cite this version:**

Sami Mecheri, Régis Lobjois, Franck Mars. Gaze and steering strategies while driving around bends with shoulders. *Applied Ergonomics*, 2022, 103, pp.103798. 10.1016/j.apergo.2022.103798 . hal-03670083

HAL Id: hal-03670083

<https://hal.science/hal-03670083v1>

Submitted on 17 May 2022

HAL is a multi-disciplinary open access archive for the deposit and dissemination of scientific research documents, whether they are published or not. The documents may come from teaching and research institutions in France or abroad, or from public or private research centers.

L'archive ouverte pluridisciplinaire **HAL**, est destinée au dépôt et à la diffusion de documents scientifiques de niveau recherche, publiés ou non, émanant des établissements d'enseignement et de recherche français ou étrangers, des laboratoires publics ou privés.

Gaze and Steering Strategies while Driving around Bends with Shoulders

Sami Mecheri¹, Franck Mars², Régis Lobjois³

¹ Département Neurosciences et Sciences Cognitives,
Institut de Recherche Biomédicale des Armées, Brétigny-sur-Orge, France
sami.mecheri@def.gouv.fr

² Centrale Nantes, CNRS, LS2N UMR CNRS 6004, Nantes, France
franck.mars@ls2n.fr

³ COSYS-PICS-L, Univ Gustave Eiffel, IFSTTAR, F-77454 Marne-la-Vallée, France
regis.lobjois@ifsttar.fr

Corresponding author:

Régis Lobjois

Laboratoire Perceptions, Interactions, Comportements & Simulations des usagers de la route et de la rue

Institut Français des Sciences et Technologies des Transports, de l'Aménagement et des Réseaux

Université Gustave Eiffel

14-20 Boulevard Newton, Cité Descartes

Champs sur Marne, F-77447 Marne la Vallée Cedex 2, France

Phone: +33 1 81 66 83 46.

Word count (excluding title page, abstract, highlights and figure legends): 4973.

GAZE AND STEERING STRATEGIES IN BENDS

Abstract

1
2 The installation of shoulders on rural roads to create more forgiving roads encourages drivers
3
4 to cut corners on right-hand bends, but the underlying mechanisms are poorly understood.
5
6 Since eye movements and steering control are closely coupled, this study investigated how the
7
8 presence of a shoulder influences drivers' gaze strategies. To this end, eighteen drivers
9
10 negotiated right-hand bends with and without a shoulder on a simulated rural road. In the
11
12 presence of a shoulder, participants modified their visual sampling of the road by directing
13
14 their gaze further inside the bend. At the same time, their lane position was deviated inward
15
16 throughout the bend and the vehicle spent more time out of the lane. These results suggest that
17
18 the shoulder influences the visual processes involved in trajectory planning.
19
20
21 Recommendations are made to encourage drivers to keep their eyes and vehicle in the driving
22
23
24 lane when a shoulder is present.
25
26
27
28
29
30
31
32
33
34
35
36
37
38
39

40 Keywords: bends; paved shoulder; steering strategies; visual control of steering; driving
41 simulator
42
43
44
45
46
47
48
49
50
51
52
53
54
55
56
57
58
59
60
61
62
63
64
65

Gaze and Steering Strategies while Driving around Bends with Shoulders

1
2 Non-motorway rural roads are known to put drivers at risk of death or injury. In
3
4 Europe, 55% of all road accident fatalities occurred on such road networks in 2015 (European
5
6 Road Safety Observatory [ERSO], 2017). A large proportion of these road fatalities involved
7
8 single-vehicle accidents (ERSO, 2015; Observatoire National Interministériel de la Sécurité
9
10 Routière [ONISR], 2010, 2019), and most of them related to lane departures (see Najm et al.,
11
12 2007). To combat the risk of single-vehicle accidents on rural roads, several experts have
13
14 recommended installing paved shoulders adjacent to traffic lanes (Garber & Kassebaum,
15
16 2008; Organisation for Economic Co-operation and Development [OECD], 1999; Service
17
18 d'Etudes sur les Transports, les Routes et leurs Aménagements [SETRA], 2002). This
19
20 measure aims to provide drivers with a recovery area in cases of steering errors (Ogden,
21
22 1997), but it is also designed to accommodate cyclists and slow-moving vehicles (American
23
24 Association of State Highway and Transportation Officials [AASHTO], 2011; Armour &
25
26 McLean, 1983; Hall et al., 1998; SETRA, 2008). Roads both straight and curved that are
27
28 equipped with paved shoulders have been proven to reduce accidents by about 30% for a wide
29
30 range of traffic densities and shoulder widths (Armour & McLean, 1983; Zegeer et al., 1994;
31
32 Elvik et al., 2009) in comparison to unequipped roads (e.g., Turner et al., 1981).
33
34
35
36
37
38
39
40

41
42 Researchers who have examined the influence of paved shoulders have reported
43
44 beneficial effects in terms of lateral positioning on straight roads. Indeed, compared to a road
45
46 without a shoulder, drivers shifted to the right¹ of their lane when in the presence of a 1.50 m
47
48 shoulder (Bella, 2013). Other studies showed that as the width of the shoulder increased,
49
50 drivers moved more and more to the right of their lane (Ben-Bassat & Shinar, 2011; Mecheri
51
52 et al., 2017; see also van Driel et al., 2004). These behavioural changes allow drivers to move
53
54 away from oncoming traffic without getting closer to the edge of the road. Interestingly, while
55
56
57

58
59 ¹ The arguments are developed for countries with right-hand traffic lanes. Driving on the right side of the road
60 implies that oncoming traffic is located on the left of the vehicle while the shoulder adjacent to the travel lane is
61 located on the right of the vehicle.
62
63
64
65

1 drivers gradually shifted to the edge line when the shoulder is enlarged, they systematically
2 adjusted their lateral position to keep their vehicles within the lane boundaries and exhibited
3 similar lateral-position variability across shoulder-width conditions (Mecheri et al., 2017).
4

5 This suggests that while drivers use the width of their lane differently in the presence of a
6 shoulder on straight roads, they may not see a shoulder as an extra driving lane but only as a
7 recovery area.
8
9

10
11
12
13
14 In bends, it is well documented from real-world (e.g., Kandil et al., 2009) and
15 simulator (e.g., Mars, 2008) studies that drivers cut corners. Corner-cutting consists of
16 steering to the outer lane's edge before entering the curve and moving towards the inner-lane
17 boundary around the apex (Boer, 1996). This strategy is used to reduce the curvature of the
18 trajectory so that driving speed can be maintained. Corner cutting is very common in
19 negotiating turns (Barendswaard et al., 2019). In fact, it has been shown that a path that cuts
20 the corner is more likely to be attributed to a human driver, whereas driving in the centre of
21 the lane is more readily associated with automated driving (Bazilinsky et al., 2021). This
22 type of trajectory likely contributes to run-off-road crashes occurring in bends, as lateral
23 vehicle placement is considered one of the critical safety-related characteristics in negotiating
24 bends (Steyer, 2000). In right-hand bends where the shoulder is installed on the inside of the
25 curve, it has been observed that the presence of a shoulder increases corner-cutting. Bella
26 (2013) found that drivers shifted 40 cm towards the inside of a sharp curve in the presence of
27 a 1.50 m wide shoulder. Ben-Bassat and Shinar (2011) observed that lateral deviation towards
28 the inner lane boundary increased substantially with shoulder width (35, 53 and 70 cm from
29 the centre of the lane in 0.50, 1.20 and 3.00-m shoulder-width conditions, respectively).
30
31
32
33
34
35
36
37
38
39
40
41
42
43
44
45
46
47
48
49
50
51
52
53
54
55
56
57
58
59
60
61
62
63
64
65

60 However, in left-hand bends, lateral positions were little affected by the presence of a
61 shoulder. Although the results of these studies converge (Bella, 2013; Ben-Bassat & Shinar,
62 2011), both studies were conducted using an applied perspective regarding roadway design

1 elements. One can hardly infer from these data why drivers steered closer to the edge line in
2 right-hand bends equipped with a shoulder. This question deserves to be investigated to better
3 understand drivers' behavioural adaptations to shoulders.
4
5

6
7 From a road-safety perspective, it is recognized that paved shoulders make bends more
8 forgiving (Garber & Kassebaum, 2008; OECD, 1999; SETRA, 2002). In line with this, Ben-
9 Bassat and Shinar (2011) demonstrated that drivers' perceived safety on undivided highways
10 increased with the shoulder width and was higher on right-hand than left-hand bends
11 regardless of shoulder width. One can assume that this greater sense of safety induces a
12 change in drivers' perceptions of shoulders during right-curve negotiation in comparison to
13 straight road sections; they may see the shoulder as a space that allows them to flatten out
14 their path by cutting the corner to a greater extent. The differences in lateral deviation
15 observed between shoulder conditions could then be the result of drivers planning their
16 trajectories differently depending on whether a shoulder is present.
17
18
19
20
21
22
23
24
25
26
27
28
29
30

31 Since it has been robustly demonstrated that gaze and steering are tightly coupled in
32 curve driving (Lappi & Mole, 2018), one way to determine whether drivers plan their
33 trajectories differently in the presence of shoulders is to examine whether the visual control of
34 steering is affected by a shoulder concomitantly to the steering trajectories in right curves.
35 Several studies have indeed shown that when the gaze is manipulated so that it is laterally
36 offset from the centre of the road, the trajectory tends to be deflected in the same direction.
37 This has been observed in straight lines (Readeringer et al., 2002) but also in bends with high
38 (20 and 30°; Kountouriotis et al. 2015) or low (5 to 11°; Robertshaw & Wilkie, 2008;
39 Kountouriotis et al. 2012) gaze eccentricity. Robertshaw and Wilkie (2008) found, however,
40 that this effect is mainly valid for large lane widths (6 m). On narrow roads (3 m), lateral
41 position error compensation mechanisms that are based on the peripheral view of lane edges
42 come into play and limit this effect. Some studies have even found a trajectory shift in
43
44
45
46
47
48
49
50
51
52
53
54
55
56
57
58
59
60
61
62
63
64
65

1 direction opposite to the deviation of the gaze (Mars, 2008; Crisler et al., 2009). Based on this
2 literature, the hypothesis that installing or widening a shoulder affects drivers' gaze strategies
3 in right-hand bends is a possible explanation for how shoulders affect drivers' behaviour.
4 Specifically, in the presence of a shoulder, drivers may change the way they sample the road
5 scene by directing their gaze more towards the inside of a curve (towards the shoulder) and, as
6 a result, steer further inside. However, it is not known whether drivers' gaze strategies in
7 right-hand bends are affected by the presence and width of shoulders.

8
9
10
11
12
13
14
15
16
17 The present study aims to examine drivers' visual strategies in relation to their steering
18 trajectories in right-hand bends that are equipped with paved shoulders. For this purpose,
19 drivers negotiated a series of bends on a simulated two-lane rural road with or without a
20 shoulder while their gaze and steering behaviour were recorded. The widths of the shoulder
21 (0, 0.75 and 1.25 m) and the lane (2.75 and 3.50 m) were manipulated. Based on previous
22 findings, a series of hypotheses were formulated.

23
24
25
26
27
28
29
30
31 H1. Shoulder presence hypothesis: If the extra space provided by a shoulder is seen as an
32 opportunity to straighten a trajectory, the presence of a shoulder would cause drivers to look
33 further inside the curve and steer in the same direction as a result.

34
35
36
37
38
39 H2. Shoulder width hypothesis: Following Ben-Bassat and Shinar (2011), it was hypothesized
40 that the wider the shoulder, the more the gaze and the trajectory would deviate towards the
41 inside of a curve.

42
43
44
45
46
47 H3. Lane width hypothesis: On a narrow lane, the presence of a shoulder may induce a greater
48 orientation of the gaze toward the inside of a curve, but steering trajectories could remain
49 relatively unchanged. According to Robertshaw and Wilkie (2008), this would be due to the
50 information provided by inner edge line that provides a stronger feedback for the
51 compensation of lateral position errors.

52 53 54 55 56 57 58 59 60 61 62 63 64 65 **Method**

Participants

1
2 Eighteen participants aged between 23 and 50 years (mean age = 36 years; SD = 10
3
4 years; 9 females), all with normal or corrected vision, were recruited for this experiment via
5
6 web advertisements. The experiment was approved by the ethics committee of Université
7
8 Gustave Eiffel. The participants had been fully licensed for at least two years. No professional
9
10 drivers were involved. The self-reported total mileage ranged from 22,000 to 490,000 km
11
12 (mean = 229,611 km; SD = 205,480 km). All participants provided their informed consent to
13
14 be included in the study and did not know about the purpose of the experiment.
15
16
17
18

Experimental Setup

19
20 The experiment was carried out using a low-cost driving simulator (Figure 1) that was
21
22 equipped with a force-feedback steering wheel (Logitech G25). A virtual full-scale vehicle
23
24 cab (vehicle width = 1.86 m, including mirrors) was displayed on the screen (Figure 1), as it
25
26 has been shown that that providing a virtual full-scale cab increases the drivers' ability to
27
28 adjust steering to the width of the lane in low-cost simulators (Mecheri & Lobjois, 2018).
29
30 Images were displayed on three screens that were 1.22 m wide and 0.70 m high (60 Hz refresh
31
32 rate; resolution of 3840 × 2160 pixels). The distance between the participant's head and the
33
34 centre of each screen was 1.05 m, making the field of view 180° horizontally and 37°
35
36 vertically. Three loudspeakers generated realistic engine and environmental noises. The data
37
38 were collected at a sampling rate of 60 Hz.
39
40
41
42
43
44
45

46 The visual scene represented a two-lane rural road in a traffic-free environment with
47
48 one lane going in each direction. The road surface was textured and marked by a
49
50 discontinuous line 0.18 m wide on the edges and 0.15 m wide in the centre. The surrounding
51
52 terrain was depicted as a flat rural landscape. The participants drove on the right side of the
53
54 road.
55
56
57
58
59
60
61
62
63
64
65



Figure 1. Illustration of the low-cost driving simulator with a virtual full-scale cab displayed in the visual scene.

A Pertech head-mounted monocular eye tracker was used to record the participants' eye movements at a sampling rate of 50 Hz. This monocular eye-tracker has 0.25° of accuracy (according to the manufacturer's specifications) and uses pupil-tracking technology with an image processing algorithm to define ocular direction. It was calibrated using a 7-point grid.

Data from the simulator, including the tangent point position in the coordinate system of the screen (in pixels), were sent to the eye-tracker software. Gaze positions were automatically calculated and expressed (in pixels) in the same coordinate system. The synchronisation between the two data sets was achieved through a Network Time Protocol server/client application.

Experimental Design and Task

Six experimental rural roads that corresponded to two lane widths (3.50 and 2.75 m) and three shoulder widths (0, 0.75 and 1.25 m) were used in this study (Figure 2). The lane widths were selected from typical lane designs in France (see Hall et al., 1998; SETRA, 1994). The shoulder widths were determined using French regulations for shoulders on rural roads; 0.75 m and 1.25 m corresponded to the minimum and recommended widths, respectively.

GAZE AND STEERING STRATEGIES IN BENDS

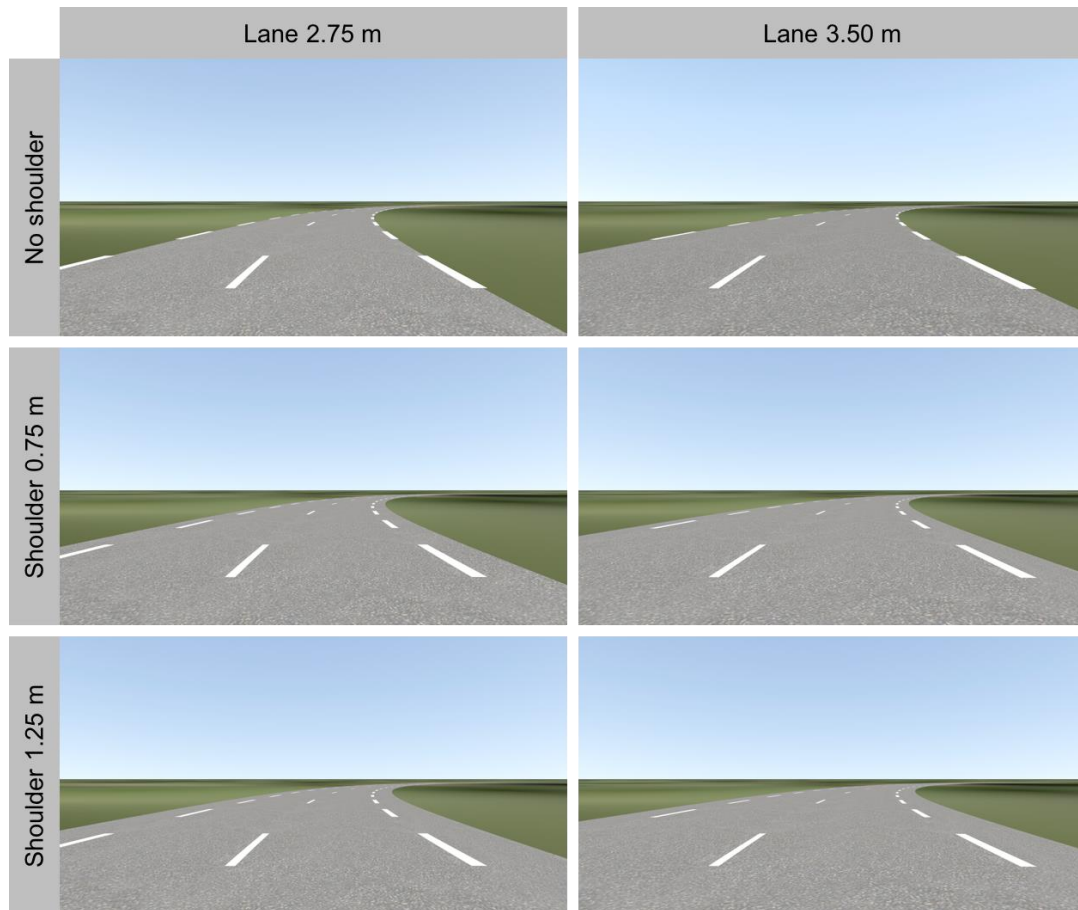


Figure 2. Screenshots of the six experimental roads used in the experiment. The point of view is that of the participants at the beginning of the curve.

On each experimental road, the participants had to perform a repetitive cornering task in a right-hand bend which had a radius and arc length of 200 m as measured from the centre of the road. At the beginning of each trial, the participants were positioned in the centre of their (straight) lane at 50 m from the bend entry and steered with an initial speed of 90 km/h (i.e., the legal speed limit for two-lane rural roads in France). Their speed was maintained constantly by the simulator software so that the trajectories in the bend were not influenced by any individual speed reduction strategies. Given the constant speed and road portion length (250 m), each experimental trial lasted 12 s.

Procedure

Upon their arrival, the participants filled out biographical and consent forms. They were then invited to sit down in the simulator and were encouraged to adjust the driving seat

1 before the nature and requirements of the task were explained. They were told that they would
2 have to drive repeatedly on a right-hand bend on a two-lane rural road while their driving
3 speed would be kept constant. Participants were asked to drive as they would normally do
4 with their own car on a two-lane rural road while obeying traffic rules. They were then
5 informed that each trial would begin with a black screen, which would be replaced with the
6 visual scene. At this point, they had to drive until they reached the end of the bend, at which
7 point the black screen reappeared. The participants were then allowed to get used to the
8 simulator by driving on a winding rural road that featured several different curves. Before
9 performing the experimental trials, the participants carried out six practice trials to familiarize
10 themselves with the experimental task. After that, they were equipped with the eye tracker,
11 and the device was calibrated (this was done before each experimental session). During the
12 experiment proper, the participants completed one block of eight successive trials on every
13 experimental road; the order of presentation was random. The participants did not receive
14 feedback on their driving performance. They took a short break every two roads, during
15 which they were free to leave the simulator, if necessary. The experimental session lasted
16 about one hour.

38 **Data and Statistical Analysis**

41 **Driving measures.** Driver behaviour was assessed in terms of lateral position in the
42 lane. The lateral position was defined as the distance in centimetres between the centre of the
43 participant's vehicle and the centre of his or her driving lane. To obtain a straightforward
44 view of the trajectories taken by participants along the curve, we computed the lateral position
45 at three points in the bend (Figure 3A). LP_{Entry} corresponded to the instantaneous position in
46 the lane at curve onset. LP_{Apex} indicated the instantaneous position in the lane when the driver
47 reached half of the curve. LP_{Max} corresponded to the vehicle's closest position to the inside
48 edge of a curve. Negative values indicated deviation toward the outside edge line, whereas
49

positive values indicated deviation toward the inside edge line. Based on these variables, we also calculated the amplitude of corner-cutting as measured by the difference between LP_{Max} and LP_{Entry} . Finally, we computed the lane departure duration, which we defined as the percentage of the total time that the participant's vehicle was outside the lane. A departure began when any wheel touched the inner lane marking.

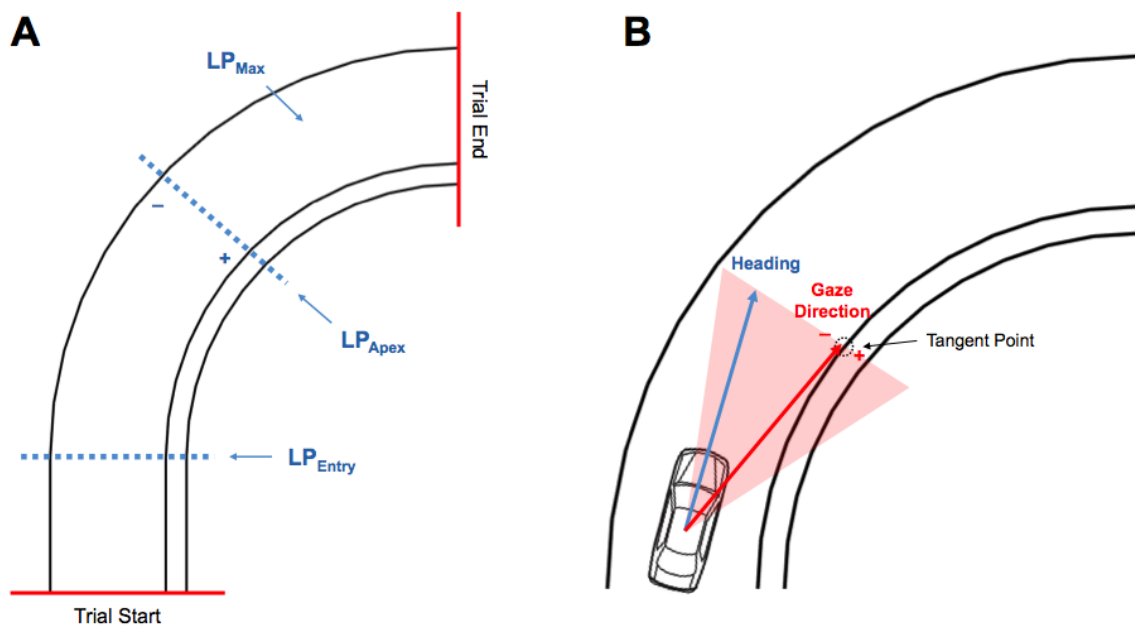


Figure 3. Schematic representation of the dependent variables computation according to the geometry of a bend. (A) The first 50 m of each trial consisted of a straight road followed by a bend of 200 m. Three lateral-position variables were calculated: LP_{Entry} (position at 0 m into the curve), LP_{Apex} (position at 100 m into the curve), and LP_{Max} (innermost position). Lateral position was calculated relative to the lane centre, with positive values corresponding to a deviation toward the inside edge of the curve. (B) The gaze behaviour was analysed as the horizontal angular deviation from the tangent point. As an approximation, gaze deviation was considered to be either in the driving lane (negative angular deviations) or beyond the edge line (positive angular deviations).

Gaze measures. Given our hypothesis that drivers would look more towards the inside of a curve when in the presence of a shoulder, we examined gaze behaviour by computing the deviation of the gaze on the horizontal axis relative to the tangent point (TP; i.e., the point in the bend where the direction of the inside edge line seems to reverse from the driver's viewpoint, see Figure 3B) (Kandil et al., 2009; Land & Lee, 1994; Wilson et al.,

2007). The TP was used as a dynamic spatial reference to analyse visual strategies as it was found that gaze points in the vicinity of the TP capture a large proportion of guiding fixations regardless of whether they are future path fixations (e.g., Mars & Navarro, 2012; Robertshaw & Wilkie, 2008) or fixations to the TP itself (e.g., Kandil et al., 2009). As the TP was located on the edge line, this provided a straightforward view of gaze orientation as being either in the lane or beyond the edge line. In practical terms, the visual scene was divided into twenty intervals of 1° of angular deviation from the TP (from -10° to $+10^\circ$), and the proportion of gaze points falling within each interval was computed for each bend (the straight-line approach has been excluded). Gaze points that fell beyond 10° of eccentricity were distributed between two additional classes ($<-10^\circ$ or $>+10^\circ$).

These variables were analysed with repeated measure analyses of variance (ANOVAs). The effects of lane width and shoulder width on driving measures were assessed using 2 (lane width: 2.75, 3.50) \times 3 (shoulder width: 0, 0.75, 1.25) ANOVAs. For gaze distribution, we performed a three-way ANOVA and used lane width, shoulder width and angular deviation from the TP as within-participant factors. All tests were done with p set at .05. Mauchly's test of sphericity was conducted to determine whether the sphericity assumption was violated. In cases of violation, the Greenhouse-Geisser correction was used and modified degrees of freedom were reported. To follow up on significant effects, Newman-Keuls post hoc tests were run when necessary. For each effect, partial eta-squared (η_p^2) was calculated to determine the proportion of total variability accounting for the effect. Descriptive statistics were reported using means and standard deviations (mean \pm *SD*).

Results

Driving Measures

The 2×3 repeated measures ANOVA on LP_{Entry} revealed only a main effect of shoulder width ($F_{1.44, 24.57} = 4.21, p = .03, \eta_p^2 = 0.20$). Under the no-shoulder condition, the

1 drivers entered the bend with a mean deviation toward the outside edge (-4 ± 31 cm), whereas
 2 they drove more in the right half lane in presence of a shoulder (5 ± 28 and 6 ± 29 cm from
 3 the centre of the lane in the 0.75- and 1.25-m shoulder-width conditions, respectively).
 4
 5

6 Similarly, only a main effect of shoulder width was found for LP_{Apex} ($F_{1,34,22.88} = 5.71$,
 7 $p = .02$, $\eta_p^2 = 0.25$). Under the no-shoulder condition, the drivers maintained a middle-lane
 8 position on average (0 ± 30 cm). By contrast, a mean inward deviation was observed when a
 9 shoulder was present (9 ± 29 and 11 ± 34 cm from the centre of the lane in the 0.75- and 1.25-
 10 m shoulder-width conditions, respectively).
 11
 12
 13
 14
 15
 16
 17
 18

19 The ANOVA on LP_{Max} indicated a main effect of lane width ($F_{1,17} = 7.751$, $p = .01$,
 20 $\eta_p^2 = 0.31$) due to a smaller lateral deviation on the narrow lane (40 ± 26 and 48 ± 30 cm for
 21 the 2.75 and 3.50 m wide roads, respectively) and a main shoulder-width effect ($F_{1,43,24.31} =$
 22 12.19 , $p < .001$, $\eta_p^2 = 0.42$). A post hoc test for the shoulder effect revealed that the innermost
 23 lateral position in the bend was further down the inside edge line when a shoulder was present
 24 (34 ± 27 , 48 ± 27 and 49 ± 28 cm in the 0, 0.75- and 1.25-m shoulder-width conditions,
 25 respectively). The effects of shoulder width on the lateral position at the three key points in
 26 the bend are depicted in Figure 4.
 27
 28
 29
 30
 31
 32
 33
 34
 35
 36
 37
 38

39 The ANOVA performed on the amplitude of corner-cutting demonstrated only the
 40 main effect of lane width ($F_{1,17} = 11.07$, $p = .01$, $\eta_p^2 = 0.39$). The amplitude of corner cutting
 41 was significantly larger on a wide lane (46 ± 17 cm) than on a narrow lane (37 ± 13 cm).
 42
 43
 44
 45

46 Regarding the lane departure duration, the statistical analysis revealed the main effect
 47 of lane width ($F_{1,17} = 12.93$, $p < .01$, $\eta_p^2 = 0.44$) and the main effect of shoulder width
 48 ($F_{1,51,25.81} = 12.19$, $p = .03$, $\eta_p^2 = 0.21$). Participants spent more time off the lane on the narrow
 49 lane ($7 \pm 10\%$) than on the wide lane ($2 \pm 6\%$) and in presence of a shoulder (5 ± 8 and $6 \pm$
 50 12% in the 0.75 and 1.25 m conditions, respectively) than in the absence of one ($2 \pm 4\%$).
 51
 52
 53
 54
 55
 56
 57
 58
 59
 60
 61
 62
 63
 64
 65

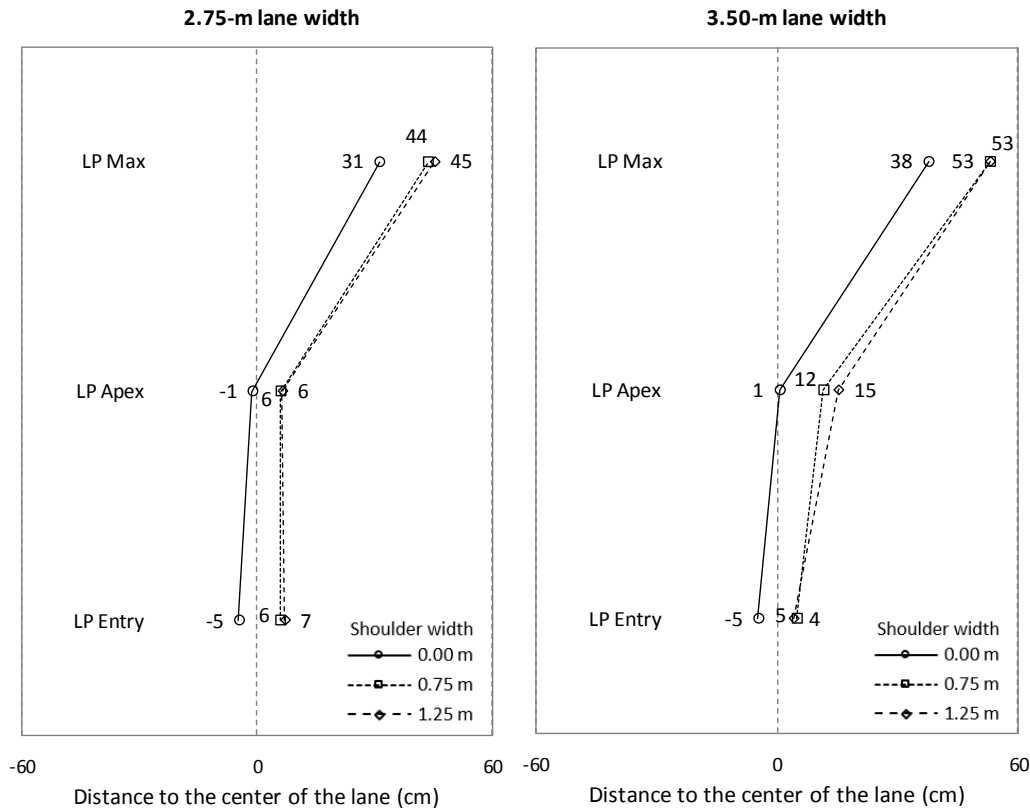


Figure 4. Lateral position at the three measurement points in the bend (the entry, the apex and the innermost position) as a function of lane width and shoulder width. Zero represents the centre of the lane.

Gaze Measures

The 2 x 3 x 22 repeated measures ANOVA on the proportion of gaze points revealed the main effect of angular deviation ($F_{21,294} = 24.33, p < .001, \eta_p^2 = 0.63$) and a significant interaction between shoulder width and angular deviation ($F_{42,588} = 2.28, p < .001, \eta_p^2 = 0.14$). Most visual sampling was concentrated in the vicinity of the TP (85% between -3° and 3°), with almost two-thirds of these gaze points that were oriented towards the lane (i.e., from -3° to 0°). The peak of the distribution (23%) occurred at the $[-1^\circ; 0^\circ[$ interval.

The post hoc test for the interaction between shoulder width and angular deviation revealed that this overall distribution of gaze differed as a function of shoulder width with a larger proportion of gaze points directed beyond the TP in the presence of a shoulder (Figure 5). A higher proportion of gaze points falling within the $[-2^\circ; -1^\circ[$ interval was found in the no-shoulder condition than in the two shoulder conditions, which also differed between each

other. Conversely, a higher proportion of gaze points was observed within the $[0^\circ; 1^\circ]$ interval in the presence of a shoulder, regardless of its width, compared with the no-shoulder condition.

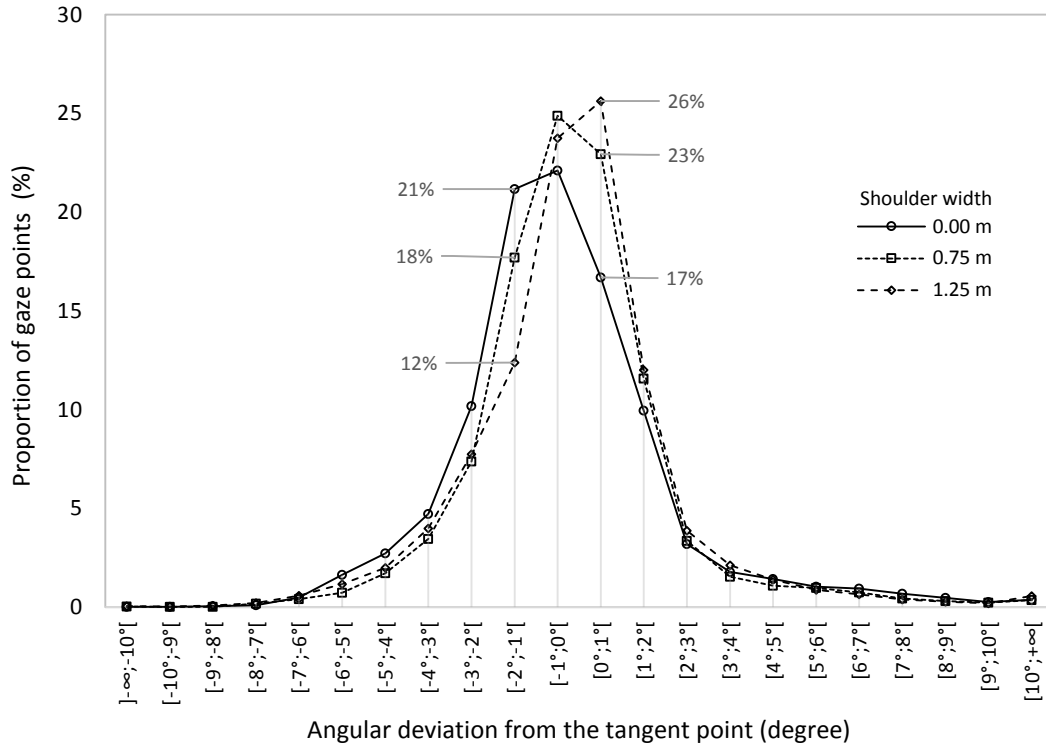


Figure 5. The proportion of the gaze points (%) as a function of shoulder width and angular deviation from the tangent point on the horizontal axis (degree). Negative angular deviations indicate that drivers' gaze is directed toward the lane.

Discussion

The objective of this study was to examine whether the presence of a shoulder influences the distribution of a drivers' visual strategies in relation to their trajectories in right-hand bends. For this purpose, the participants repeated a cornering task on a simulated two-lane rural road with or without a paved shoulder while their free gaze and steering strategies were recorded. Gaze behaviour was analysed as the horizontal angular deviation of gaze points from the TP. This made it possible to characterize the gaze as being oriented either towards the lane or towards the shoulder. Three hypotheses were formulated as follows: H1. Drivers may look further inside the curve and steer in the same direction when a shoulder is present; H2. The gaze and the trajectory may deviate more towards the inside of a curve

1 when the shoulder is widened; H3. When it is installed on a narrow lane, the shoulder may
2 induce changes in gaze but not in steering due to a stronger edge-line feedback that comes
3 into play.
4
5

6
7 Gaze and driving measures revealed significant effects of the shoulder on driver
8 behaviour in right-hand bends. Under the no-shoulder condition, significantly more gaze
9 points were directed in the interval $[-2^\circ; -1^\circ]$ in comparison to the shoulder conditions. The
10 drivers thus looked more within the lane boundaries and steered accordingly at a significantly
11 smaller distance from the centre of their lane and with significantly lower lane departure
12 duration. It is worth noting that a similar pattern of gaze distribution and steering trajectories
13 was found in prior curve-driving studies that used a similar method (Mars & Navarro, 2012;
14 Schnebelen et al., 2019). In the presence of a shoulder, the participants gazed more at the
15 interval $[0^\circ; 1^\circ]$. As a result, they steered further towards the inside of the curve, in
16 accordance with previous studies (Bella, 2013; Ben-Bassat & Shinar, 2011). Consequently,
17 the trajectories taken by the participants were not always well-suited to the manoeuvring
18 space as more time was spent off the lane. This pattern of results supports the hypothesis H1
19 that the shoulder is seen by drivers as an opportunity to increase corner cutting and has an
20 influence on path planning. Although the drivers steered closer to the edge line, the results
21 revealed that the amplitude of corner-cutting was not affected by the presence of a shoulder.
22 The drivers adopted roughly equivalent path curvatures in the three shoulder width conditions,
23 but the presence of a shoulder led to a rightward shift of the trajectory, which was observed at
24 the three measurement points. This suggests that the tight coupling between gaze and steering
25 control in bends is preserved when a shoulder is added, but the driver's path planning is
26 changed.
27
28
29
30
31
32
33
34
35
36
37
38
39
40
41
42
43
44
45
46
47
48
49
50
51
52
53
54

55 The fact that the drivers used the extra space provided by the shoulder is consistent
56 with Ben-Bassat and Shinar's results (2011). In accordance with the "steer where you look"
57
58
59
60
61
62
63
64
65

1 strategy whereby drivers look at successive waypoints (Lappi & Mole, 2018; Wann & Swapp,
2 2000; Wilkie & Wann, 2003), the participants in the present study looked more or less
3
4 towards the inside of the curve depending on the presence or absence of a shoulder.
5
6 Nevertheless, based on this visual strategy and the increased feeling of safety, one might have
7
8 expected that the wider the shoulder, the more the gaze and the trajectory would deviate
9
10 towards the inside of the curve. This was not observed. Contrary to the hypothesis H2, the
11
12 effects of the shoulder on gaze and steering behaviour did not depend on shoulder width,
13
14 which operated in an all-or-nothing mode. The functional significance of this observation may
15
16 be found in the hypothesis formulated by Mars and Navarro (2012). These authors assumed
17
18 that drivers' gaze is not directed towards points on the future path but rather to a safety line
19
20 that they do not want to cross. According to this perspective, maintaining some distance from
21
22 the inside edge line under the no-shoulder condition makes sense since drivers cannot risk
23
24 losing control of their vehicles by driving on the side of the road. In contrast, the presence of a
25
26 shoulder could increase the acceptable trajectory envelope, which would explain why drivers
27
28 gazed more beyond the TP and why they spent more time off the lane. However, when the
29
30 width of a shoulder increases, drivers limit this behaviour because they know the shoulder is
31
32 not a drivable area.
33
34
35
36
37
38
39
40

41 From a more theoretical point of view, these findings can be comprehensively
42
43 accounted for by the concept of field of safe travel (Gibson & Crooks, 1938). The boundaries
44
45 of the field of safe travel are determined by objects or features of the terrain that have a
46
47 negative 'valence' from the driver's viewpoint, such as obstacles or low-grip surfaces.
48
49 According to Gibson and Crooks (1938), a positive or negative valence refers to the
50
51 propensity of an object to induce a movement towards or away from it. In the present case, the
52
53 inner edge line, which coincided with the road edge in the absence of a shoulder, was equated
54
55 to an obstacle. In the presence of a shoulder, the inner edge line may take on a less negative
56
57
58
59
60
61
62
63
64
65

1 valence and no longer be considered as an obstacle as the shoulder opens a new field of safe
2 travel that did not exist before. In this case, the inner edge line is no longer a reliable indicator
3 of the objective possibilities of locomotion and becomes a purely legal limit. From the
4 driver's point of view, this may lead to a compromise between the legal interdiction of
5 crossing the edge line and the possibility of extending the field of safe and efficient travel. As
6 stated by Gibson and Crooks (1938), the possibilities for opening up a new field of safe travel
7 depend on a driver's sensitivity to the pertinence of this field for locomotion and upon the
8 degree to which this field is imbued with meaning for locomotion. In the present study, one
9 can assume that drivers considered driving on the shoulder to be pertinent insofar as only 3
10 participants out of 18 did not encroach into this road space. However, they seemed to have
11 made some kind of compromise with the meaning of such behaviour that contravened the
12 traffic rules to keep this behaviour within a satisfying limit.
13
14
15
16
17
18
19
20
21
22
23
24
25
26
27
28

29 The present results also revealed that the shoulder effects on the driving behaviour
30 were similar between the two lane-width conditions. Although the lane departure duration was
31 higher with a shoulder than without – and the amplitude of corner-cutting was similar – these
32 shoulder-related effects did not vary with the width of the lane. This goes against the
33 hypothesis H3 that was based on the results of Robertshaw and Wilkie (2008). Indeed, if the
34 compensation of lateral deviations were stronger in narrow lanes, then the shoulder effect on
35 the lane departure duration would have been mitigated. This discrepancy between studies may
36 be due to the fact that the participants drove freely and did not have to keep their vehicles as
37 close to the centre of the lane as possible, a condition in which the influence of the edge lines
38 in compensatory control may play a more determining role (e.g., Kountouriotis et al., 2012).
39 These results reinforce the idea that shoulder effects are the result of different trajectory
40 planning and further suggest that creating or widening a shoulder can be done equally well on
41 wide and narrow rural roads without increasing the amplitude of corner-cutting.
42
43
44
45
46
47
48
49
50
51
52
53
54
55
56
57
58
59
60
61
62
63
64
65

1
2
3
4
5
6
7
8
9
10
11
12
13
14
15
16
17
18
19
20
21
22
23
24
25
26
27
28
29
30
31
32
33
34
35
36
37
38
39
40
41
42
43
44
45
46
47
48
49
50
51
52
53
54
55
56
57
58
59
60
61
62
63
64
65

These results lead us to consider road layout that would prompt drivers to keep their vehicles in the lane in right-hand bends equipped with shoulders. The objective would be to preserve the safety benefits of the shoulder without inducing deleterious changes in the trajectory (e.g., encroachment on the shoulder or reduction of the lateral clearance while overtaking cyclists riding on the shoulder). Since the present results demonstrated that drivers' trajectory follows their gaze, the objective would also be to prevent drivers from shifting their gaze towards the shoulder. One method would consist of implementing perceptual countermeasures such as a continuous, wider or double edge line (e.g., Charlton, 2007), peripheral transverse bars (e.g., Calvi et al., 2019) or herringbones (e.g., Charlton, 2007; Awan et al., 2019). Such delineation devices would be aimed at strengthening guidance signals dedicated to trajectory planning and/or inducing a negative valence from the driver's viewpoint. In the studies of Bella (2013) and Ben-Bassat and Shinar (2011), experimental roads had continuous edge lines. Since the drivers still deviated to the inside of the bend in the presence of a shoulder, it can thus be assumed that implementing continuous lateral marking is not effective in counteracting the influence of the shoulder on gaze and steering behaviour. Out of all the countermeasures that have been tested to make bends safer, herringbones have a good potential to influence lateral positions around bends with shoulders. Indeed, drivers were found to move further towards the outer part of their lane at curve entry (Charlton, 2007; Awan et al., 2019) and to maintain a more central position in the bend (Awan et al., 2019, but see Ariën, 2017) in the presence of herringbones in comparison to a control condition without altering corner-cutting behaviour. Additionally, this pavement treatment could be coupled with advanced warning signs that are known to reduce speed (Charlton, 2007) insofar as corner-cutting and time spent out of the lane are reduced at a slower speed (Raw et al., 2012; Xu et al., 2018).

1
2
3
4
5
6
7
8
9
10
11
12
13
14
15
16
17
18
19
20
21
22
23
24
25
26
27
28
29
30
31
32
33
34
35
36
37
38
39
40
41
42
43
44
45
46
47
48
49
50
51
52
53
54
55
56
57
58
59
60
61
62
63
64
65

It warrants mentioning that the choice was made to hold drivers' speed constant in this study, preventing the ability of drivers to modulate their speed to negotiate bends. This method is commonly used in studies investigating the relationship between gaze and steering control (e.g., Kountouriotis et al., 2012; Robertshaw & Wilkie, 2008; Schnebelen et al., 2019), as it facilitates comparison between experimental conditions. However, it limits the ecological validity of the study. Therefore, it would be relevant to replicate this experiment with participants driving at a self-determined speed and to extend the analysis to curves of various radii in order to generalize the findings of this study.

In conclusion, this study showed in accordance with previous research that drivers steer further inside right-hand bends with the presence of a shoulder, and that this was observed at three points in the curve. Although the amplitude of corner-cutting was not affected by the presence of a shoulder, the increases in lateral deviation resulted in more time spent out of the lane. Importantly, the analysis of visual strategies provided compelling evidence that this driving behaviour is due to a modification of the visual sampling of the road ahead. In the presence of a shoulder, the drivers' gaze deviated towards the inside of the curve, and the steering trajectories followed, regardless of the shoulder width. This alteration of behaviour can be viewed as the product of the drivers' sensitivity to the shoulder as a new field of safe travel (Gibson & Crooks, 1938) that induces a compromise, from the driver's point of view, between the legal interdiction of crossing the edge line and the possibility of steering more efficiently (shorter path length through the curve). Based on our findings, it would be worth examining the effects of delineation treatments to better define travel paths on roads that are equipped with shoulders in order to bring the drivers' gaze and vehicle back to the lane. As shoulders are also suitable for cycle use, another valuable future direction might be to examine drivers' steering trajectories when overtaking cyclists in right-hand bends.

Acknowledgments

This research was supported by a grant from the Road Safety Department of the French Government (contract n° 2201141611). The authors would like to thank Matthieu Adam (CEREMA) for designing the simulated roads, and Stéphane Caro and Fabrice Vienne (IFSTTAR) for their help in preparing the simulator and communication with the eye-tracker.

1
2
3
4
5
6
7
8
9
10
11
12
13
14
15
16
17
18
19
20
21
22
23
24
25
26
27
28
29
30
31
32
33
34
35
36
37
38
39
40
41
42
43
44
45
46
47
48
49
50
51
52
53
54
55
56
57
58
59
60
61
62
63
64
65

References

- 1
2
3 American Association of State Highway and Transportation Officials (AASHTO) (2011). A
4 policy on geometric design of highways and streets. The American Association of State
5 Highway and Transportation Officials, AASHTO Green Book, Washington DC.
- 6
7 Ariën, C., Brijs, K., Vanroelen, G., Ceulemans, W., Jongen, E. M. M., Daniels, S., Brijs, T.,
8 & Wets, G. (2017). The effect of pavement markings on driving behaviour in curves: a
9 simulator study. *Ergonomics*, *60*:5, 701–713.
10 <https://doi.org/10.1080/00140139.2016.1200749>
- 11
12 Armour, M., & McLean, J.R. (1983). Effect of shoulder width and type on rural traffic safety
13 and operations. *Australian Road Research Board*, *13*(4), 259–270.
- 14
15 Awan, H. H., Pirdavani, A., Houben, A., Westhof, S., Adnan, M., & Brijs, T. (2019). Impact
16 of perceptual countermeasures on driving behavior at curves using driving simulator.
17 *Traffic Injury Prevention*, *1*, 93–99. <https://doi.org/10.1080/15389588.2018.1532568>
- 18
19 Barendswaard, S., Pool, D. M., Boer, E. R., & Abbink, D. A. (2019). A classification method
20 for driver trajectories during curve-negotiation. In *2019 IEEE International Conference*
21 *on Systems, Man and Cybernetics (SMC)* (pp. 3729-3734). IEEE.
- 22
23
24 Bazilinsky, P., Sakuma, T., & de Winter, J. (2021). What driving style makes pedestrians
25 think a passing vehicle is driving automatically? *Applied Ergonomics*, *95*, 103428.
26 <https://doi.org/10.1016/j.apergo.2021.103428>
- 27
28 Bella, F. (2013). Driver perception of roadside configurations on two-lane rural roads: Effects
29 on speed and lateral placement. *Accident Analysis & Prevention*, *50*, 251–262.
30 <http://dx.doi.org/10.1016/j.aap.2012.04.015>
- 31
32 Ben-Bassat, T., & Shinar, D. (2011). Effect of shoulder width, guardrail and roadway
33 geometry on driver perception and behavior. *Accident Analysis & Prevention*, *43*, 2142–
34 2152. <http://dx.doi.org/10.1016/j.aap.2011.06.004>
- 35
36
37 Boer, E. R. (1996). Tangent point oriented curve negotiation. In *IEEE Proceedings of the*
38 *1996 Intelligent Vehicles Symposium* (pp. 7–12). Piscataway, NJ: IEEE.
- 39
40 Calvi, A., D'Amico, F., Ciampoli, L., & Ferrante, C. (2019). Evaluating the effectiveness of
41 perceptual treatments on sharp curves: a driving simulator study. *Traffic Injury*
42 *Prevention*, *20*, S13–S19. <https://doi.org/10.1080/15389588.2019.1669789>
- 43
44 Charlton, S. G. (2007). The role of attention in horizontal curves: A comparison of advance
45 warning, delineation, and road marking treatments. *Accident Analysis & Prevention*, *39*,
46 873–885. <https://doi.org/10.1016/j.aap.2006.12.007>
- 47
48 Crisler, M. C., Brooks, J. O., Riggins, K., Garris, B., Tyler, J., & Dahl, S. (2009). The effects
49 of display location within simulated driving environments. In *Proceedings of the Fifth*
50 *International Driving Symposium on Human Factors in Driver Assessment, Training and*
51 *Vehicle Design*, pp. 191–197.
- 52
53 Elvik, R., Høy, A., Vaa, T., & Sørensen, M. (2009). The handbook of road safety measures
54 (2nd ed.). Bingley, UK, Emerald Group.
- 55
56
57 European Road Safety Observatory (ERSO) (2015). Traffic safety basic facts on single
58 vehicle accidents. European Commission, Directorate General for Transport June 2015.
- 59
60
61
62
63
64
65

- 1 European Road Safety Observatory (ERSO) (2017). Traffic safety basic facts on main figures.
2 European Commission, Directorate General for Transport, June 2017.
- 3 Garber, N. J., & Kassebaum, E. A. (2008). Evaluation of crash rates and causal factors for
4 high-risk locations on rural and urban two-lane highways in Virginia. VTRC 09R1.
5 Charlottesville: Virginia Transportation Research Council.
- 6
7 Gibson, J. J., & Crooks, L. E. (1938). A theoretical field-analysis of automobile-driving. *The*
8 *American Journal of Psychology*, 51(3), 453–471.
- 9
10 Hall, L. E., Powers, R. D., Turner, D. S., Brilon, W., & Hall, J. W. (1998). Overview of cross
11 section design elements. In: International Symposium on Highway Geometric Design
12 Practices, vol. 12, Boston, pp. 1–12.
- 13
14 Kandil, F. I., Rotter, A., & Lappe, M. (2009). Driving is smoother and more stable when
15 using the tangent point. *Journal of Vision*, 9(1), 11. <https://doi.org/10.1167/9.1.11>
- 16
17
18 Kountouriotis, G. K., Wilkie, R. M., Gardner, P. H., & Merat, N. (2015). Looking and
19 thinking when driving: The impact of gaze and cognitive load on steering. *Transportation*
20 *Research Part F: Traffic Psychology and Behaviour*, 34, 108–121.
21 <https://doi.org/10.1016/j.trf.2015.07.012>
- 22
23 Kountouriotis, G. K., Floyd, R. C., Gardner, P. H., Merat, N., & Wilkie, R. M. (2012). The
24 role of gaze and road edge information during high-speed locomotion. *Journal of*
25 *Experimental Psychology: Human Perception and Performance*, 38(3), 687–702.
26 <https://doi.org/10.1037/a0026123>
- 27
28
29 Land, M. F., & Lee, D. N. (1994). Where we look when we steer. *Nature*, 369, 742–744.
30 <http://dx.doi.org/10.1038/369742a0>
- 31
32 Lappi, O., & Mole, C. D. (2018). Visuomotor control, eye movements, and steering: A unified
33 approach for incorporating feedback, feedforward, and internal models. *Psychological*
34 *Bulletin*, 144(10), 981–1001. <https://doi.org/10.1037/bul0000150>
- 35
36
37 Mars, F. (2008). Driving around bends with manipulated eye-steering coordination. *Journal of*
38 *Vision*, 8(11):10, 1–11. <https://doi.org/10.1167/8.11.10>
- 39
40 Mars, F., & Navarro, J. (2012). Where we look when we drive with or without active steering
41 wheel control. *PLoS ONE*, 7(8), e43858. <http://dx.doi.org/10.1371/journal.pone.0043858>
- 42
43 Mecheri, S., & Lobjois, R., (2018). Steering control in a low-cost driving simulator: a case for
44 the role of virtual vehicle cab. *Human Factors*, 60(5), 719–734.
45 <https://doi.org/10.1177/0018720818769253>
- 46
47 Mecheri, S., Rosey, F., & Lobjois, R. (2017). The effects of lane width, shoulder width, and
48 road cross-sectional reallocation on drivers' behavioral adaptations. *Accident Analysis &*
49 *Prevention*, 104, 65–73. <https://doi.org/10.1016/j.aap.2017.04.019>
- 50
51
52 Najm, W. G., Smith, J. D., & Yanagisawa, M. (2007). Pre-crash scenario typology for crash
53 avoidance research. DOT-HS-810. National Highway Transportation Safety
54 Administration, pp. p. 767.
- 55
56 Observatoire National Interministériel de la Sécurité Routière (ONISR) (2010). La sécurité
57 routière en France. Bilan de l'accidentalité de l'année 2009. La Documentation Française.
- 58
59 Observatoire National Interministériel de la Sécurité Routière (ONISR) (2019). La sécurité
60 routière en France. Bilan de l'accidentalité de l'année 2018. La Documentation Française.
- 61
62
63
64
65

- 1
2
3
4
5
6
7
8
9
10
11
12
13
14
15
16
17
18
19
20
21
22
23
24
25
26
27
28
29
30
31
32
33
34
35
36
37
38
39
40
41
42
43
44
45
46
47
48
49
50
51
52
53
54
55
56
57
58
59
60
61
62
63
64
65
- Ogden, K. W. (1997). The effects of paved shoulders on accident on rural highways. *Accident Analysis & Prevention*, 29, 353–362. [https://doi.org/10.1016/S0001-4575\(97\)00001-8](https://doi.org/10.1016/S0001-4575(97)00001-8)
- Organisation for Economic Co-operation and Development (OECD) (1999). Safety strategies for rural roads. Road transport and intermodal research report. Organisation for Economic Co-operation and Development, Paris, 1999.
- Raw, R. K., Kountouriotis, G. K., Mon-Williams, M., & Wilkie, R. M. (2012). Movement control in older adults: Does old age mean middle of the road? *Journal of Experimental Psychology: Human Perception and Performance*, 38, 735–745. <http://dx.doi.org/10.1037/a0026568>
- Readerger, W. O., Chatziastros, A., Cunningham, D. W., Bülthoff, H. H., & Cutting, J. E. (2002). Gaze eccentricity effects on road position and steering. *Journal of Experimental Psychology: Applied*, 8, 247–258. <https://doi.org/10.1037/1076-898X.8.4.247>
- Robertshaw, K. D., & Wilkie, R. M. (2008). Does gaze influence steering around a bend? *Journal of Vision*, 8(4), 1–13. <https://doi.org/10.1167/8.4.18>
- Schnebelen, D., Lappi, O., Mole, C., Pekkanen, J., & Mars, F. (2019). Looking at the road when driving around bends: Influence of vehicle automation and speed. *Frontiers in Psychology*, 10:1699. <https://doi.org/10.3389/fpsyg.2019.01699>
- Service d'Études sur les Transports, les Routes et leurs Aménagements (SETRA) (1994). Aménagement des Routes Principales (ARP) – Guide technique: Recommandations techniques pour la conception générale et la géométrie de la route. Service d'Études sur les Transports, les Routes et leurs Aménagements, Bagneux, France.
- Service d'Études sur les Transports, les Routes et leurs Aménagements (SETRA) (2002). Amélioration de la sécurité des virages des routes principales en rase campagne. Savoir et Agir. Service d'Études sur les Transports, les Routes et leurs Aménagements, Bagneux, France.
- Service d'Études sur les Transports, les Routes et leurs Aménagements (SETRA) (2008). Savoirs de base en sécurité routière - L'accotement revêtu. Savoirs et savoir-faire. Service d'Études sur les Transports, les Routes et leurs Aménagements, Bagneux, France.
- Steyer, R., Sossoumihen, A., & Weise, G. (2000) Traffic safety on two-lane rural roads: New concepts and findings. In *Proceedings of the 2nd International Symposium on Highway Geometric Design* (pp. 299–312). Cologne, Germany: Road and Transportation Research Association.
- Turner, D. S., Fambro, D. B., & Rogness, R. O. (1981). Effects of paved shoulders on accident rates for rural Texas highways. *Transportation Research Record*, 819, 30–37.
- Van Driel, C. J., Davidse, R. J., & van Maarseveen, M. F. (2004). The effects of an edgeline on speed and lateral position: a meta-analysis. *Accident Analysis & Prevention*, 36(4), 671–682. [https://doi.org/10.1016/S0001-4575\(03\)00090-3](https://doi.org/10.1016/S0001-4575(03)00090-3)
- Wann, J. P., & Swapp, D. K. (2000). Why you should look where you are going. *Nature Neuroscience*, 3, 647–648. <http://dx.doi.org/10.1038/76602>
- Wilkie, R. M., & Wann, J. P. (2003). Eye-movements aid the control of locomotion. *Journal of Vision*, 3, 677–684. <http://dx.doi.org/10.1167/3.11.3>

GAZE AND STEERING STRATEGIES IN BENDS

- 1 Wilson, M., Stephenson, S., Chattington, M., & Marple-Horvat, D. E. (2007). Eye movements
2 coordinated with steering benefit performance even when vision is denied. *Experimental*
3 *Brain Research*, 176, 397–412. <http://dx.doi.org/10.1007/s00221-006-0623-3>
- 4 Xu, J., Luo, X., & Shao, Y. M. (2018). Vehicle trajectory at curved sections of two-lane
5 mountain roads: a field study under natural driving conditions. *European Transport*
6 *Research Review*, 10(1), 1–16. <https://doi.org/10.1007/s12544-018-0284-x>
- 7
8 Zegeer, C. V., Stewart, R., Council, F., & Neuman, T. R. (1994). Accident relationships of
9 roadway width on low-volume roads. *Transportation Research Record*, 1445, 160–168.
10
11
12
13
14
15
16
17
18
19
20
21
22
23
24
25
26
27
28
29
30
31
32
33
34
35
36
37
38
39
40
41
42
43
44
45
46
47
48
49
50
51
52
53
54
55
56
57
58
59
60
61
62
63
64
65