



**HAL**  
open science

## Circumpolar Variations in the Chaotic Nature of Southern Ocean Eddy Dynamics

Andrew Mcc. Hogg, Thierry Penduff, Sally Close, William Dewar, Navid Constantinou, Josué Martínez-moreno

► **To cite this version:**

Andrew Mcc. Hogg, Thierry Penduff, Sally Close, William Dewar, Navid Constantinou, et al.. Circumpolar Variations in the Chaotic Nature of Southern Ocean Eddy Dynamics. *Journal of Geophysical Research. Oceans*, 2022, 127 (5), 10.1029/2022JC018440 . hal-03669660

**HAL Id: hal-03669660**

**<https://hal.science/hal-03669660>**

Submitted on 17 May 2022

**HAL** is a multi-disciplinary open access archive for the deposit and dissemination of scientific research documents, whether they are published or not. The documents may come from teaching and research institutions in France or abroad, or from public or private research centers.

L'archive ouverte pluridisciplinaire **HAL**, est destinée au dépôt et à la diffusion de documents scientifiques de niveau recherche, publiés ou non, émanant des établissements d'enseignement et de recherche français ou étrangers, des laboratoires publics ou privés.



Distributed under a Creative Commons Attribution - NonCommercial - NoDerivatives 4.0 International License

## Circumpolar Variations in the Chaotic Nature of Southern Ocean Eddy Dynamics



### Key Points:

- Monthly-to-interannual variability in the Southern Ocean eddy field is dominated by chaotic, rather than atmospherically-forced processes
- The forced component of the eddy kinetic energy variance is significantly correlated with the local wind stress input
- The forced changes in the eddy field lag the wind stress, with two timescales emerging: one at 4–6 months, and one at 2–3 years

### Correspondence to:

A. McC. Hogg,  
[Andy.Hogg@anu.edu.au](mailto:Andy.Hogg@anu.edu.au)

### Citation:

Hogg, A. McC., Penduff, T., Close, S. E., Dewar, W. K., Constantinou, N. C., & Martínez-Moreno, J. (2022). Circumpolar variations in the chaotic nature of Southern Ocean eddy dynamics. *Journal of Geophysical Research: Oceans*, 127, e2022JC018440. <https://doi.org/10.1029/2022JC018440>

Received 13 JAN 2022  
Accepted 4 MAY 2022

Andrew McC. Hogg<sup>1</sup> , Thierry Penduff<sup>2</sup> , Sally E. Close<sup>2,3</sup>, William K. Dewar<sup>4</sup> ,  
Navid C. Constantinou<sup>1</sup> , and Josué Martínez-Moreno<sup>1,3</sup> 

<sup>1</sup>Research School of Earth Sciences and ARC Centre of Excellence for Climate Extremes, Australian National University, Canberra, Australia, <sup>2</sup>Institut des Géosciences de l'Environnement (IGE), Université Grenoble Alpes, CNRS, IRD, Grenoble-INP, Grenoble, France, <sup>3</sup>Now at: Laboratoire d'Océanographie Physique et Spatiale (LOPS), University of Brest/IFREMER/IRD/CNRS, Brest, France, <sup>4</sup>Florida State University, Tallahassee, FL, USA

**Abstract** Circulation in the Southern Ocean is unique. The strong wind stress forcing and buoyancy fluxes, in concert with the lack of continental boundaries, conspire to drive the Antarctic Circumpolar Current replete with an intense eddy field. The effect of Southern Ocean eddies on the ocean circulation is significant—they modulate the momentum balance of the zonal flow, and the meridional transport of tracers and mass. The strength of the eddy field is controlled by a combination of forcing (primarily thought to be wind stress) and intrinsic, chaotic, variability associated with the turbulent flow field itself. Here, we present results from an eddy-permitting ensemble of ocean model simulations to investigate the relative contribution of forced and intrinsic processes in governing the variability of Southern Ocean eddy kinetic energy. We find that variations of the eddy field are mostly random, even on longer (interannual) timescales. Where correlations between the wind stress forcing and the eddy field exist, these interactions are dominated by two distinct timescales—a fast baroclinic instability response; and a multi-year process owing to feedback between bathymetry and the mean flow. These results suggest that understanding Southern Ocean eddy dynamics and its larger-scale impacts requires an ensemble approach to eliminate intrinsic variability, and therefore may not yield robust conclusions from observations alone.

**Plain Language Summary** The Southern Ocean is the most turbulent part of the world's oceans. This turbulence, often referred to as *eddies*, is critical to the evolution of the Southern Ocean under climate change. But it's hard to get information about these eddies, because they occur on small scales in a large ocean basin that is poorly observed. In addition, the observational record is quite short, which makes it more difficult to use these observations to study what controls variations of these eddies. For this reason, we take an eddy-permitting ocean model, and run it 50 times with the same forcing (but a slightly different initial state). The chaotic nature of the turbulent ocean means that these model runs exhibit different evolutions. Then we use these simulations to study which eddy processes occur as a consequence of the chaotic nature of turbulence and which are forced by the external factors that are common to all model runs (such as wind stress). We conclude that monthly-to-interannual fluctuations of the Southern Ocean eddy field are dominated by chaotic processes; but that the forced variability responds to wind on particular timescales that are controlled by the mechanisms that generate ocean turbulence.

## 1. Introduction

The Southern Ocean is unique in the global ocean; it is the one region without continents on its zonal boundaries, giving rise to the Antarctic Circumpolar Current (ACC) that flows eastward around the globe. The ACC acts to connect the other major basins and thereby regulates climate and nutrients. The Southern Ocean region is also a place where mid- and high-latitude ventilation of the oceans occurs, leading to carbon and heat uptake and controlling deep ocean stratification (Morrison et al., 2022; Rousselet et al., 2021). However, the Southern Ocean is also poorly observed (compared with other ocean basins) and its unique properties mean that improved understanding of the dynamics of this region will have important implications (with the aim of predicting future responses to climate change).

Another unique feature of the Southern Ocean is that it has a strong eddy field (Fu et al., 2010). This eddy field has been suggested to be important in the Southern Ocean's response to change. For example, the eddy saturation

© 2022. The Authors.

This is an open access article under the terms of the [Creative Commons Attribution-NonCommercial-NoDerivs License](https://creativecommons.org/licenses/by/4.0/), which permits use and distribution in any medium, provided the original work is properly cited, the use is non-commercial and no modifications or adaptations are made.

hypothesis (Constantinou & Hogg, 2019; Hallberg & Gnanadesikan, 2006; Meredith & Hogg, 2006; Munday et al., 2013) suggests that the role of eddies in facilitating vertical momentum transport acts to limit the response of ACC transport to changing winds. A similar dynamic, known as eddy compensation, describes the role of eddies in moderating the effect of wind-driven change on the Southern Ocean overturning circulation (Morrison & Hogg, 2013). Therefore, the response of mesoscale transient motion in the Southern Ocean is likely important to characterizing the dynamics of this region.

The strength of the Southern Ocean eddy field is usually characterized by extracting the kinetic energy of transient motions; referred to by oceanographers as eddy kinetic energy (EKE). It is important to highlight that EKE includes all transient motion, not just coherent vortices (Martínez-Moreno et al., 2019), and thus care needs to be taken in interpreting this metric. EKE has a complex relationship with the forces that drive the ocean circulation. Meredith and Hogg (2006) found significant variations in the area-averaged eddy field in some regions, and argued for a 2–3 years lag between wind stress forcing variations and EKE anomalies that follow. Patara et al. (2016), using a realistic high-resolution ocean model found that EKE does have a lagged response to wind stress anomalies, but that this relationship varies in strength around the Southern Ocean. Idealized model studies over a wide range of parameter space (Sinha & Abernathy, 2016) have highlighted that the timescale of the perturbation is critical in determining the EKE response, with shorter perturbations having a faster, Ekman-related response. Thus, current knowledge suggests that there is a relationship between wind forcing and Southern Ocean EKE, but that the nature of this relationship needs to be clarified.

On longer timescales, it has also been proposed that EKE has increased over recent decades (Hogg et al., 2015; Martínez-Moreno et al., 2019, 2021). The robustness of this wind-EKE relationship in the Southern Ocean was recently investigated by Zhang et al. (2021), who used crossover data from satellite observations (as in Hogg et al., 2015) to better estimate the EKE on regional scales. By fine-graining these calculations it was found that only a single region (30°-wide in longitude) expressed a significant long-term trend in EKE. This finding suggests that previous characterizations of the response may have been dominated by a small number of regional events, calling into question the robustness of previous studies.

The dynamical importance of the Southern Ocean eddy field, and uncertainty over the robustness of its variability and trends, motivate a deeper investigation into the processes that control Southern Ocean eddies. A key issue here is the extent to which the eddy field purely responds to external (atmospheric) forcing, versus the role of chaotic and intrinsic variability in determining eddy energy. The fact that high-frequency eddy variability is random and chaotic is well-known, and even non-eddy ocean models can produce (a small amount of) intrinsic variability via large-scale baroclinic instability (e.g., De Verdière & Huck, 1999; Constantinou & Hogg, 2021). At longer timescales intrinsic variability can emerge from oceanic non-linearities under constant or seasonal forcing and persists under variable forcing (Leroux et al., 2018). Such intrinsic variability has a random phase (i.e., it is chaotic in character); it mostly emerges at mesoscale and can cascade toward interannual time scales and O (1,000 km) space scales (Sérazin et al., 2018). One of the goals of this work is to characterize the spatiotemporal extent of chaotic, intrinsic, variability in determining Southern Ocean EKE.

A primary complication in understanding Southern Ocean EKE is the limitation of inference from an admittedly short satellite record; in particular, whether individual events can be attributed to forcing changes, or to intrinsic variability, or a combination of the two. In this paper, we address this question by examining the intrinsic variability of the Southern Ocean eddy field in a large ensemble of eddy-permitting ocean model simulations. We use the Oceanic Chaos—ImPacts, strUcture, predicTability (OCCIPUT) ensemble of global ocean/sea-ice hindcast simulations (Leroux et al., 2018; Penduff et al., 2014), a 50-member ensemble. We examine both the intrinsic variance of the eddy field, and extract the “forced” (ensemble mean) component of the variability. This variability is examined on a circumpolar and regional basis, to better understand the regional differences and processes which contribute to the eddy field.

## 2. Methods

### 2.1. The OCCIPUT Ensemble

The methodology employed in this study is derived from the probabilistic approach to ocean modeling outlined by Bessières et al. (2017). We use output from the OCCIPUT ensemble of 50 eddy-permitting global ocean–sea

ice simulations, based on the ORCA025 implementation (e.g., Barnier et al., 2006) of the NEMO modeling system (Madec, 2012). The model grid has a  $1/4^\circ$  horizontal resolution and 75 geopotential levels. The approach involves:

1. The 50 ensemble members are initialized in 1960 from a single-member 21-year spinup using the Drakkar Forcing Set DFS5.2 (Dussin et al., 2016)
2. The ensemble spread is seeded by activating a stochastic perturbation (Brankart et al., 2015) over 1 year (1960), after which the perturbation is terminated
3. The 50 ensemble members are integrated from 1960 to 2015, driven by the same realistic atmospheric forcing function based on the ERA-40 and ERA-Interim reanalyses (Drakkar Forcing Set DFS5.2; Dussin et al. (2016))

In these simulations the wind stress is computed without ocean current feedbacks, hence ensuring that the same momentum fluxes are applied to all members. We focus our analyses on the period 1980–2015, thus yielding an effective spinup duration of 41 years in each member.

## 2.2. Estimating Geostrophic Eddy Velocity

For each ensemble member, the sea surface height,  $\eta_i$ , is saved as a 5-day average (where  $i$  represents the ensemble member). For each ensemble member, and at every time step, the member's global mean sea level anomaly is subtracted at every grid point to correct for spurious terms introduced by the use of the Boussinesq approximation (Greatbatch, 1994). The model drift, which is potentially nonlinear, is then corrected for by detrending using a LOWESS filter (Cleveland, 1979) in combination with a fifth-order spline; full details of this preprocessing may be found in Close et al. (2020).

The sea level anomaly,  $\eta'_i$ , is calculated as the transient component of sea level in ensemble member  $i$ , given by

$$\eta'_i = \eta_i - \bar{\eta}_i, \quad (1)$$

where  $\bar{\cdot}$  represents the temporally filtered, detrended sea level (Close et al., 2020). The sea level anomaly is then used to calculate the eddy velocity field. Surface eddy velocity in each ensemble member,  $\mathbf{u}'_i = (u'_i, v'_i)$  is estimated from the detrended sea level anomaly via the geostrophic relation,

$$u'_i = -\frac{g}{f} \frac{\partial \eta'_i}{\partial y} \quad \text{and} \quad v'_i = \frac{g}{f} \frac{\partial \eta'_i}{\partial x}, \quad (2)$$

where  $g$  is the acceleration due to gravity and  $f$  is the local Coriolis parameter. Anomalous values of  $\mathbf{u}'_i$  close to coastlines are removed.

The surface EKE for each ensemble member is calculated as

$$E_i = \frac{1}{2} (u_i'^2 + v_i'^2), \quad (3)$$

and subsampled at monthly temporal resolution (by taking the weighted average over each month). It is notable that  $E_i$  contains a large component of seasonal variation which dominates the statistics (Martínez-Moreno et al., 2022). To look at the forced response, we therefore deseasonalize  $E_i$ , by removing the climatological mean; we eliminate noise on the monthly timescale by filtering with a 4-month rolling mean. We then proceed to compute ensemble statistics from this deseasonalized EKE.

## 2.3. Ensemble Eddy Statistics

The EKE can be averaged over the  $N$  ensemble members to give the ensemble mean EKE, written as

$$\langle E \rangle = \frac{1}{N} \sum_{i=1}^N E_i. \quad (4)$$

The argument can be made that, since each ensemble member is forced with identical atmospheric conditions, the forced EKE response is captured by this ensemble mean quantity. On the other hand, the intrinsic variability of EKE in each ensemble member is found by taking the difference from the ensemble mean for each member,

$$E_i^* = E_i - \langle E \rangle, \quad (5)$$

where  $*$  is used to indicate departure from the ensemble mean. With these expressions in hand, we follow Leroux et al. (2018) to define the time-variance of the ensemble-mean EKE,

$$\sigma_{\langle E \rangle}^2 = \frac{1}{T} \sum_{i=1}^T \left( \langle E \rangle - \overline{\langle E \rangle} \right)^2, \quad (6)$$

which represents the variance of the forced eddy response. For each time step, the intrinsic variance emerges from the variance of the EKE difference between ensemble mean and each member of the 50 simulations,

$$e^2(t) = \frac{1}{N} \sum_{i=1}^N E_i^*(t)^2. \quad (7)$$

The fraction of intrinsic variance is then computed as the ratio of the intrinsic variance to the total variance,

$$R_i = \frac{\overline{e^2}}{e^2 + \sigma_{\langle E \rangle}^2}. \quad (8)$$

When  $R_i$  approaches unity, the system is dominated by intrinsic variability, while at the limit of  $R_i \rightarrow 0$  the system is solely responding to forced variability induced by atmospheric forcing.

To examine the relationship between the EKE (of either the ensemble mean, or from individual ensemble members) and its forcing, we are guided by previous work which emphasizes the role of wind stress in governing the eddy variability at different timescales (e.g., Hogg et al., 2015; Sinha & Abernathey, 2016). Thus, we look at the correlation coefficient,  $r$ , at a range of lags between the wind stress  $\tau$  (which is identical for all ensemble members and has been deseasonalized similarly to  $E_i$ ) and EKE. For each correlation we evaluate the statistical significance of the correlation (following, e.g., Santer et al., 2000). We first calculate the effective sample size,  $N_e$ , where

$$N_e \equiv N \frac{1 - r_1 r_2}{1 + r_1 r_2}, \quad (9)$$

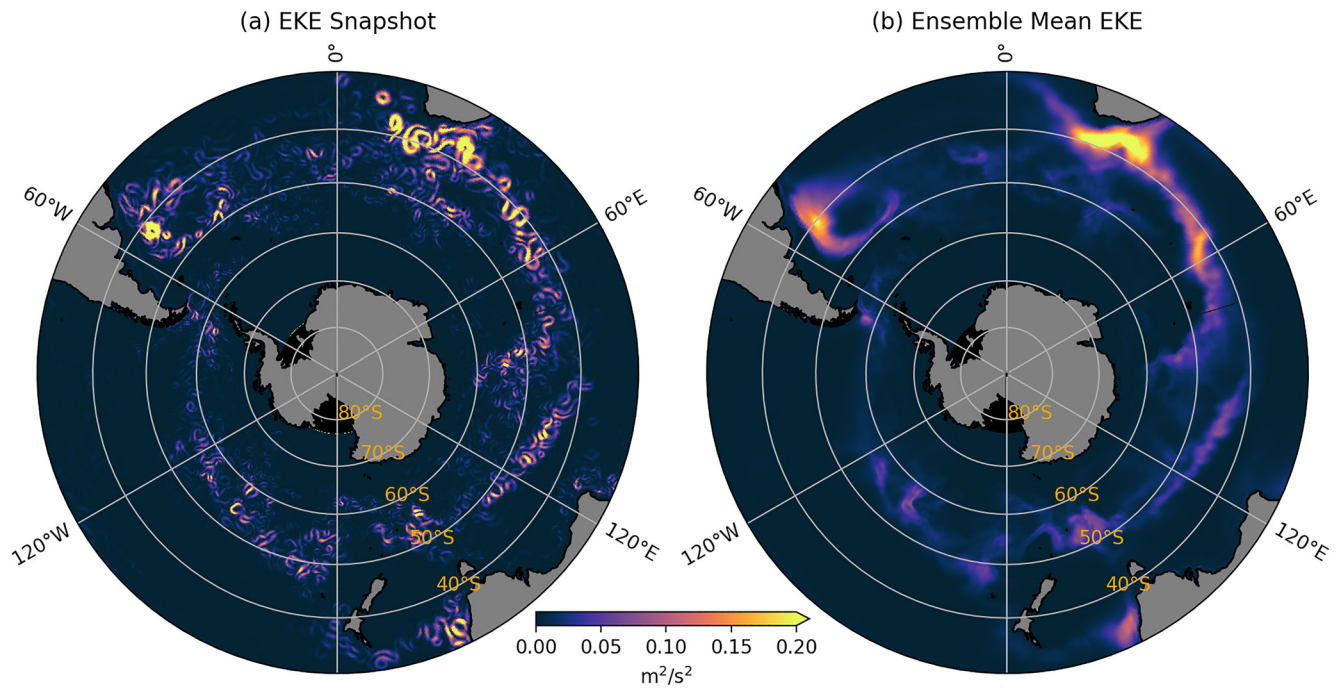
where  $N$  is the total number of samples (444 months for this timeseries),  $r_1$  is the lag-1 autocorrelation for EKE and  $r_2$  is the lag-2 autocorrelation for wind stress. We use the Student's  $t$ -test to infer statistical significance (at the 95%-level) based on this effective sample size, when

$$T = \frac{r\sqrt{N_e}}{\sqrt{1-r^2}} > 2. \quad (10)$$

Lagged correlation estimates indicate when this significance test is satisfied.

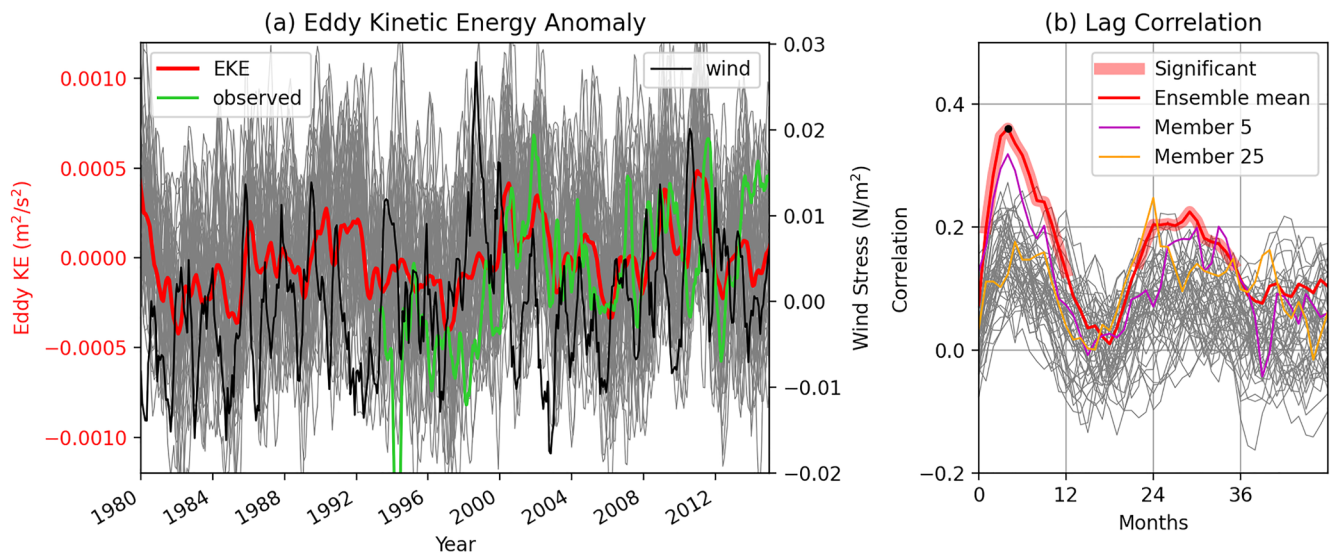
### 3. Results

The intensity of the Southern Ocean eddy field is not uniform. A snapshot of EKE from the model used here (Figure 1a) shows the occurrence of strong eddies which appear in the lee of subsurface topography and at the outlet from western boundary currents such as the Agulhas retroflection and Malvinas current. The same patterns are evident in the ensemble and temporal mean of the EKE ( $\langle E \rangle$ ; Figure 1b), although the signal of individual eddies is no longer apparent. The strongest band of EKE approximately follows the path of the ACC, and EKE is weak south of 60°S. The patterns of EKE in this model broadly match the regional variations of EKE observed from satellite altimetry, albeit at slightly lower intensity, as expected in an eddy-permitting model (e.g., Kiss et al., 2020).



**Figure 1.** (a) Snapshot (5-day average) from a single ensemble member showing Southern Ocean EKE,  $E_p$ , and (b) time-averaged ensemble mean EKE,  $\overline{\langle E \rangle}$ .

For each of the 50 members of the OCCIPUT ensemble we take the EKE averaged over the entire Southern Ocean (40°–60°S), and plot the deseasonalized EKE anomalies from each ensemble member as thin gray lines in Figure 2a. This plot highlights the considerable spread in EKE, even when averaged over the full circumpolar belt; in other words, there is a significant component of chaotic (intrinsic) variability in the Southern Ocean eddy field. The observed EKE anomaly (calculated using data from Martínez-Moreno et al. (2022), and filtered using the same methods as model output) indicates that observations are indistinguishable from the individual



**Figure 2.** Eddy kinetic energy statistics over the Southern Ocean (40°S–60°S). (a) Spatially averaged deseasonalized EKE anomaly (relative to climatology) for individual ensemble members (gray) and the ensemble mean EKE anomaly (red) and observed EKE anomaly from the satellite era (green line; calculated from Martínez-Moreno et al., 2022), along with wind stress anomaly (black); and (b) Time-lagged correlation between wind stress and EKE for the ensemble mean (red) and individual ensemble members (gray)—with two individual ensemble members highlighted in magenta and orange.

ensemble members (with the exception of a short period of anomalously low EKE in the early part of the satellite record). Nonetheless, when averaged over all ensemble members (red line in Figure 2a) the existence of a coherent (forced) component of eddy variability is revealed. Averaged over this broad region the fraction,  $R_i$ , of intrinsic variance is 0.82, confirming the visual impression that intrinsic processes dominate the variability in the eddy field averaged over the basin.

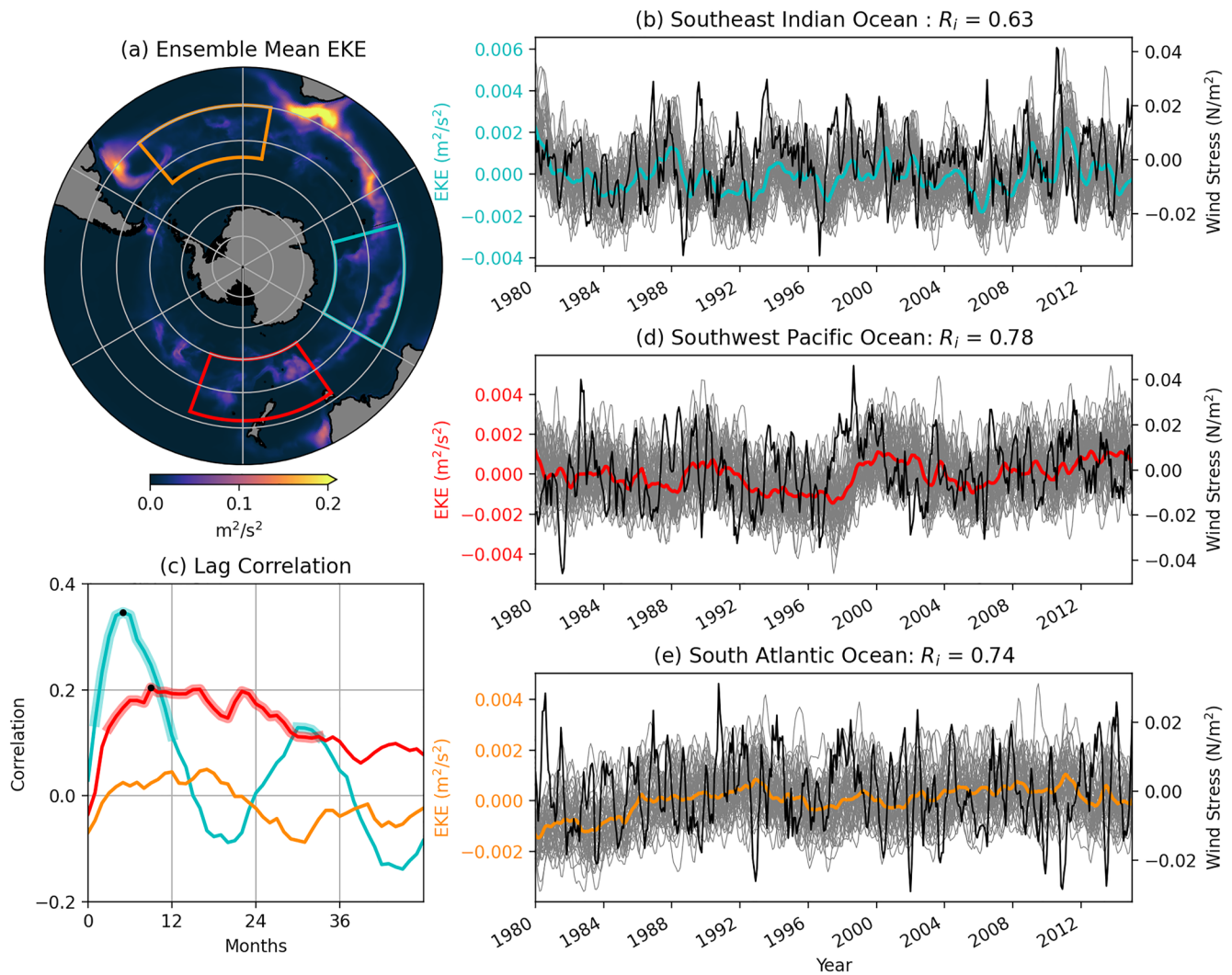
Although Southern Ocean EKE variability is strongly intrinsic, there remains a component of forced variability (red line in Figure 2a). Previous studies have inferred that there is a strong contribution of wind stress forcing upon EKE, and we therefore compare the forced variability with the variations in wind stress averaged over the same circumpolar belt (black line in Figure 2a). This comparison suggests a relationship in which wind stress leads variations in EKE, consistent with previously published results (Hogg et al., 2015; Meredith & Hogg, 2006). However, the time-lagged correlations between wind stress and EKE implies that this relationship is complex. The intrinsically variable nature of Southern Ocean eddies means that for some ensemble members, there is no meaningful correlation between wind stress and eddies (gray lines in Figure 2b). On the other hand, ensemble member 5 (magenta line) has a clear (and significant;  $T = 5.5$ ) correlation with a 4-month lag, while member 25 (orange line) is weakly correlated at 6 months, and significantly correlated ( $T = 4.2$ ) at a 24-month lag. These isolated examples highlight the differing behavior of each ensemble member. The ensemble mean (red line in Figure 2b) includes a significant correlation at  $\sim 4$  months ( $T = 5.9$ ) and a second significant peak at  $\sim 30$  months ( $T = 3.5$ ). Thus, two distinct timescales of response of the Southern Ocean eddy field to wind stress are present in this model, overprinted by a dominant and complex influence of chaotic variability.

The ensemble of simulations shown here allow us to look in more detail at smaller regions of the Southern Ocean. Calculating the variability of EKE in a smaller region has the advantage of isolating the individual processes which may occur in differing regions (e.g., stronger topographic steering in places with steep bathymetry). However, this advantage is partly offset by higher intrinsic variability; if the region of interest is sufficiently small, then an individual eddy or event can have a large influence over the EKE timeseries. In balancing these competing issues, we examine the variability within regions that span  $15\text{--}20^\circ$  in latitude and  $30\text{--}40^\circ$  in longitude, as shown in Figure 3a. We analyze the EKE timeseries averaged over these boxes—including individual member EKE, ensemble mean EKE and lagged correlations between local wind stress forcing and the ensemble mean EKE in Figures 3b–3e.

We first examine a region in the lee of Kerguelen Plateau in the Southeast Indian Ocean (cyan box in Figure 3a). This region is characterized by high-frequency ( $\sim 1$  year) variations in EKE, with a relatively large forced component (the intrinsic variance fraction,  $R_i = 0.63$ , is smaller than the Southern Ocean average; Figure 3b). The forced variation is clearly evident in the timeseries of individual ensemble members; and this forced component is related to wind stress. The lag between wind stress variations and ensemble mean EKE is short ( $\sim 5$  months; cyan line in Figure 3c) with a single clear and significant peak in the lagged correlation. There is a second, weaker but significant, correlation at 30 months lag. This region highlights a regime in which the eddy field primarily responds rapidly to variations in the local wind stress.

In the Southwest Pacific Ocean (red box in Figure 3a) the situation clearly differs. Here, the intrinsic variance fraction is larger than in the Southeast Indian Ocean ( $R_i = 0.78$ ) and the timescale of the variability is much longer (Figure 3d). The maximum values in the lag correlation occur over a broad band from 9 to 24 months in this region, without a single clear peak. Thus, this region varies slowly and consistently to interannual variations in wind stress, albeit with a strong chaotic component.

In the South Atlantic Ocean (orange box in Figure 3a) the system is again dominated by intrinsic variance ( $R_i = 0.74$ ) and is poorly correlated with wind stress forcing (Figures 3c and 3e), reinforcing the circumpolar heterogeneity of the EKE response to wind. Other regions (see Figure 4) highlight different aspects of the local eddy response; with almost no correlation with wind forcing over the Central South Pacific (Figure 4b) or the Southwest Indian Ocean (the Agulhas meander region; Figure 4e). In both of these regions, intrinsic variability largely dominates the signal and correlations are weak and insignificant. On the other hand, the Southeast Pacific (north of the main pathway of the ACC) shows a strong and coherent multi-year response to wind stress, with smaller intrinsic variance fraction and a peak lag at 30 months. It is notable that this region, which is north of the mean ACC pathway, has a weak EKE signal (one tenth the magnitude of the core of the ACC). The circumpolar

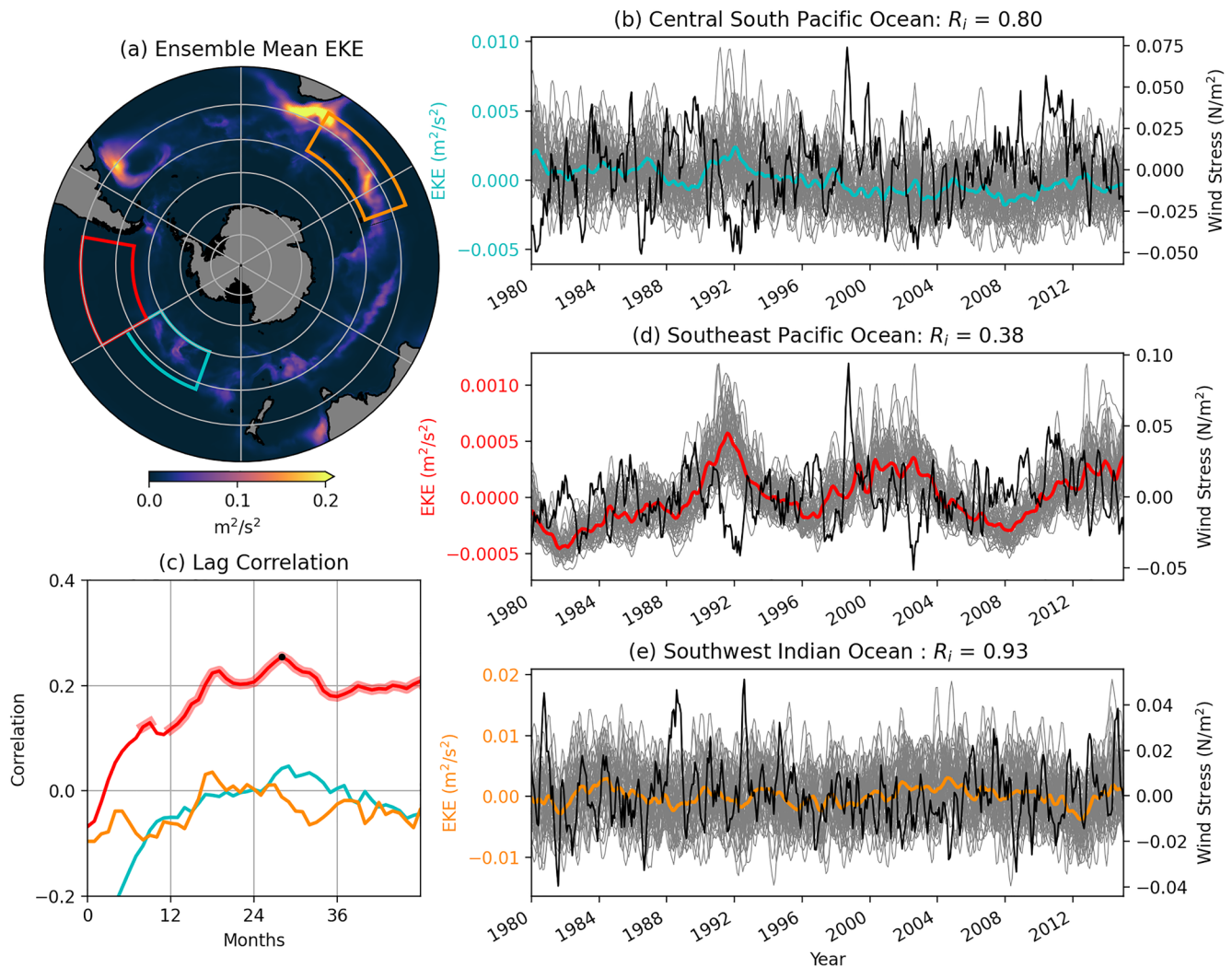


**Figure 3.** Eddy kinetic energy statistics within sub-regions of the Southern Ocean. (a) Map showing ensemble mean EKE, along with three boxes over which a regional EKE analysis is applied; (b) Regional analysis of the Southeast Indian Ocean showing ensemble mean EKE anomaly in cyan, individual ensemble members EKE anomaly in gray and local wind stress anomaly averaged over the region in black; (c) Lagged correlation of ensemble mean EKE anomaly with wind stress anomaly in each of the three regions; (d) Regional analysis of the Southwest Pacific Ocean showing ensemble mean EKE anomaly in red, individual ensemble members EKE anomaly in gray and local wind stress anomaly averaged over the region in black; and (e) Regional analysis of the South Atlantic Ocean showing ensemble mean EKE anomaly in orange, individual ensemble members EKE anomaly in gray and local wind stress averaged anomaly over the region in black. The fraction of intrinsic variance in each region is shown in the caption of panels (b), (d), and (e).

contrasts in both EKE response times and intrinsic variability suggests that the two-timescale response seen in Figure 2 may be created by different processes, which each dominate in different regions of the Southern Ocean.

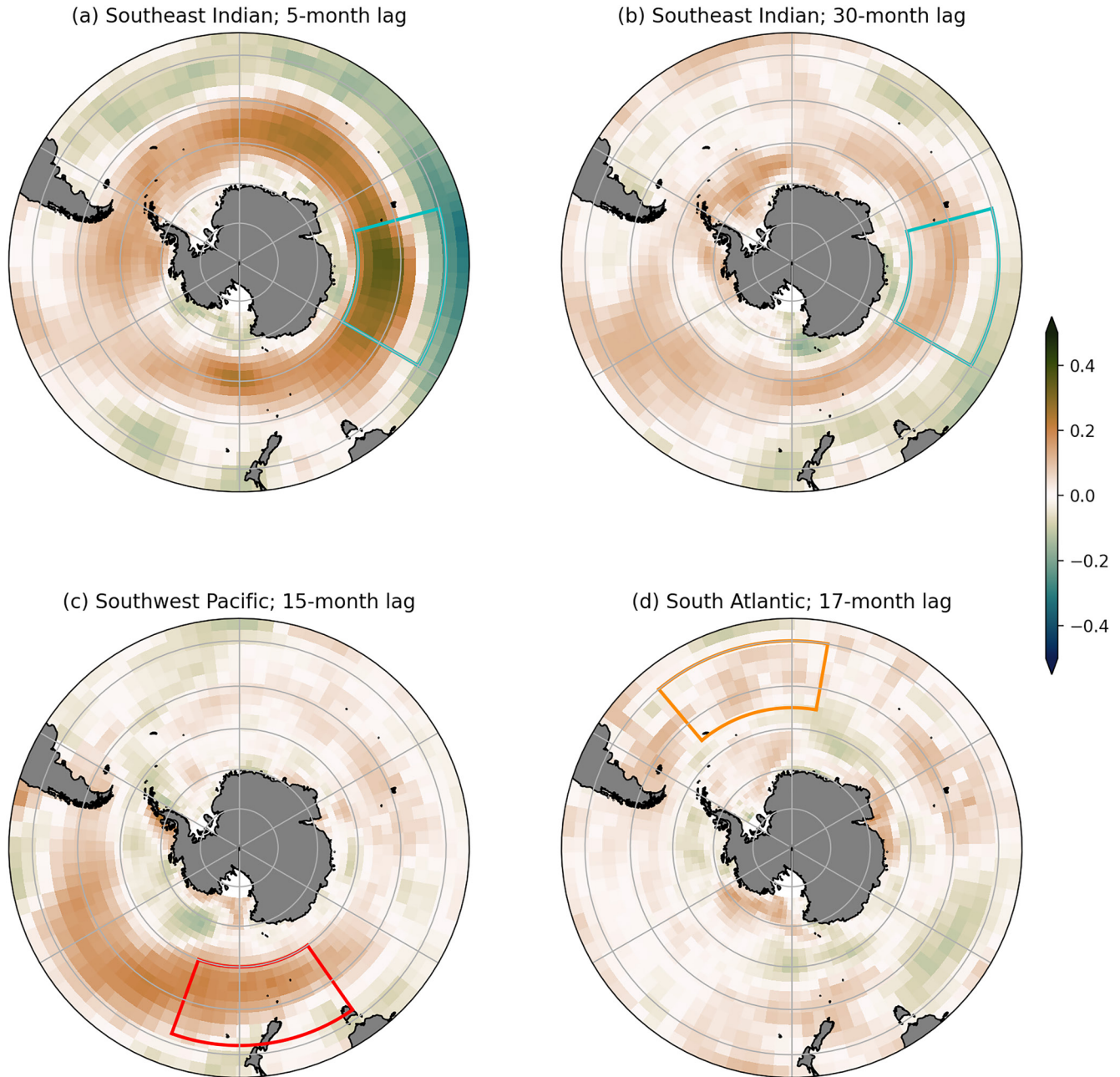
The heterogeneity in correlations between local wind and the ensemble mean EKE ( $\langle E \rangle$ ) shows that, where forced variability in Southern Ocean EKE occurs, it can be partly explained by variations in wind stress. However, these correlations are based purely on local wind stress—averaged over the same area as the EKE statistics. The existence of multi-year lags between the wind and the EKE suggests that local winds may not be the only source of energy for eddy generation; in particular, it is possible that energy could be advected a considerable distance downstream during this lag period. To investigate this question we now take each of the regions outlined in Figure 3 and look at the spatial distribution of temporal correlations between wind stress and the local ensemble mean EKE (Figure 5). To make this calculation, wind stress is first coarsened to a  $4^\circ \times 4^\circ$  grid, and wind stress in each of those coarsened grid cells correlated with ensemble mean EKE at different lags. In the Southeast Indian Ocean, Figure 3c shows correlation maxima at 5 and 30 months; the spatial variation of this correlation is shown





**Figure 4.** Eddy kinetic energy statistics within sub-regions of the Southern Ocean. (a) Map showing ensemble mean EKE, along with three boxes over which a regional EKE analysis is applied; (b) Regional analysis of the Central South Pacific Ocean showing ensemble mean EKE anomaly in cyan, individual ensemble members EKE anomaly in gray and local wind stress anomaly averaged over the region in black; (c) Lagged correlation of ensemble mean EKE anomaly with wind stress anomaly in each of the three regions; (d) Regional analysis of the Southeast Pacific Ocean showing ensemble mean EKE anomaly in red, individual ensemble members EKE anomaly in gray and local wind stress anomaly averaged over the region in black; and (e) Regional analysis of the Southwest Indian Ocean showing ensemble mean EKE anomaly in orange, individual ensemble members EKE anomaly in gray and local wind stress anomaly averaged over the region in black. The fraction of intrinsic variance in each region is shown in the caption of panels (b), (d), and (e).

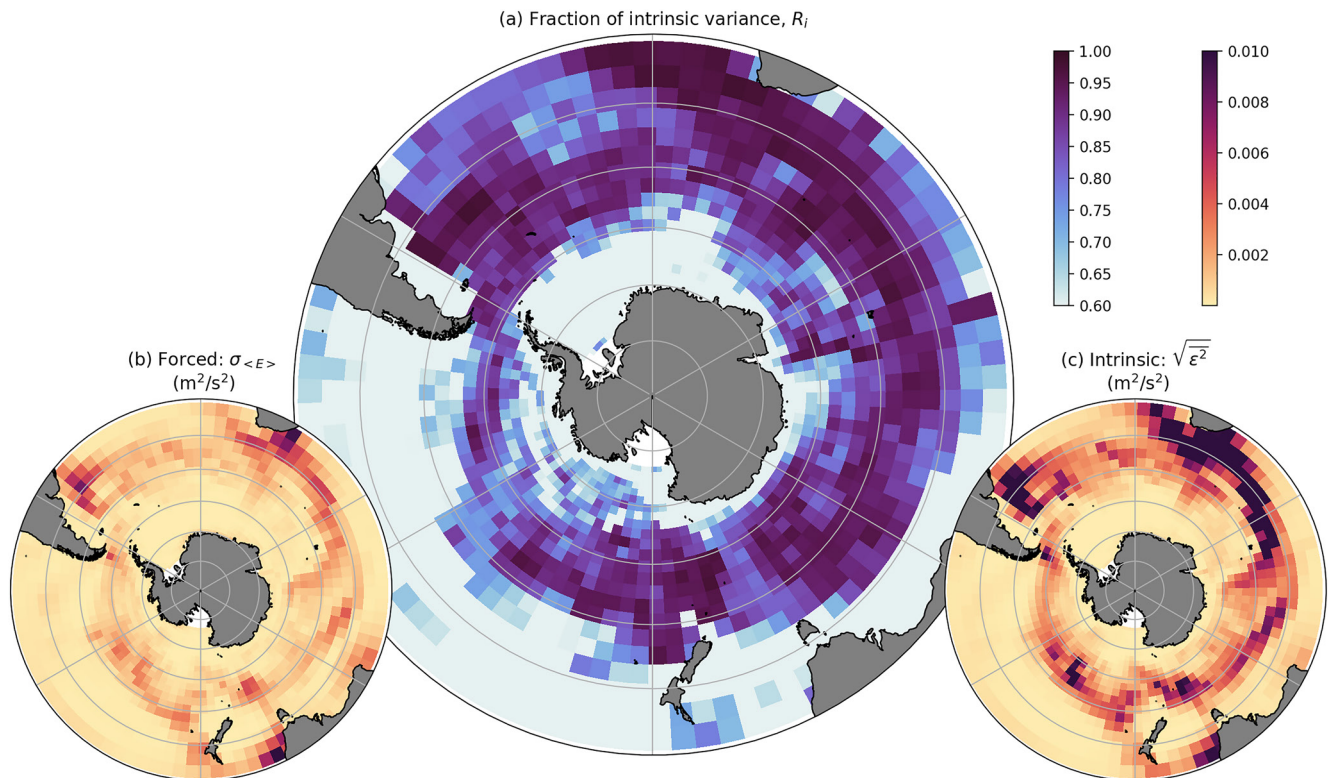
in Figures 5a and 5b, respectively. These figures highlight a key feature of Southern Ocean wind stress, which is that there are strong autocorrelations between wind stress along a line of latitude; nonetheless, the maximum correlation between wind stress and  $\langle E \rangle$  occurs within the EKE-averaging region. This correlation is lower in magnitude at 30 months (consistent with Figure 3c), but at both 5 and 30 months lags the correlation with wind stress upstream of the EKE-averaging region is not stronger than within the EKE-averaging region. A similar result is found in the Southwest Pacific Ocean (Figure 5c); wind stress correlations are relatively uniform across the Pacific Ocean owing to the autocorrelation of winds, but the correlations are less circumpolar than the Southeast Indian Ocean. Importantly, there is no suggestion of a strong correlation with wind stress upstream of the EKE-averaging region. In the South Atlantic,  $\langle E \rangle$  is not strongly correlated with wind stress, either in the local region or elsewhere in the Southern Ocean (Figure 5d). Thus, these spatial maps demonstrate that, where strong forced variability in the ensemble mean EKE exists, it is most strongly linked to local wind stress, with no suggestion of upstream or remote wind input playing a strong role.



**Figure 5.** The spatial correlation of wind stress with  $\langle E_i \rangle$  in (a) the Southeast Indian Ocean at 5-month lag; (b) the Southeast Indian Ocean at 30-month lag; (c) the Southwest Pacific ocean at 15-month lag and (d) the South Atlantic Ocean at 17-month lag.

#### 4. Discussion and Conclusions

The simulations shown here advocate for a probabilistic approach to understanding the Southern Ocean eddy field. The 50-member ensemble of eddy-permitting ocean-sea ice model simulations investigated here demonstrate that inference about the EKE response of a single ensemble member to variable forcing in a localized region is not robust, broadly consistent with the findings of Zhang et al. (2021). This point is clarified in Figure 6 which shows a map of the intrinsic fraction of interannual variance,  $R_i$ , from eddy statistics interpolated onto a coarse ( $4^\circ \times 4^\circ$ ) grid, with eddy contributions filtered using a 12-month rolling mean. Here, even at interannual timescales, the chaotic variance dominates over most of the band of elevated EKE in the Southern Ocean. Subpanels (b) and (c)



**Figure 6.** (a) The interannual intrinsic variance fraction,  $R_i$ , averaged onto a  $4^\circ \times 4^\circ$  grid and with a 12-month rolling mean; (b) amplitude of interannual variability due to forced processes, and (c) amplitude of interannual EKE variability due to intrinsic processes.

confirm the predominance of intrinsic eddy variability at this scale, highlighting that at small ( $\sim 4^\circ$ ) scales we can place little reliability on the results from an individual ensemble member, or from actual observations.

When averaged over larger regions, the fraction of intrinsic variance can be smaller than shown in Figure 6. For example, in the Southeast Indian Ocean, in the lee of the Kerguelen Plateau, a strong and rapid response of EKE to the local wind stress can be observed (Figures 3b and 3c). On the other hand, slower but significant responses in EKE are found in the Southwest Pacific Ocean, near Campbell Plateau (Figures 3c and 3d). Both of these regions are locations where topography acts to sharpen and energize fronts. However, in many other regions, EKE variability appears to be almost entirely chaotic. This heterogeneity, consistent with the findings of Patara et al. (2016), acts to emphasise the differing flow regimes which are found in different parts of the Southern Ocean.

Averaged over the entire Southern Ocean two significant timescales of correlation are found between wind stress and the ensemble mean EKE: one at 4–6 months, and the other at  $\sim 30$  months. The rapid timescale is the expected Ekman response, in which wind stress tilts isopycnals to store available potential energy, which is then released to EKE through baroclinic instability (e.g., Sinha & Abernathy, 2016). This mechanism is the direct eddy response to wind stress changes via baroclinic instability.

The slower timescale is similar to that proposed by Meredith and Hogg (2006), based on a single large Southern Ocean wind event in 1999. This timescale is consistent with the topographic feedback mechanism of Hogg and Blundell (2006). Under this mechanism, the system first responds directly, via baroclinic instability, as described above. The stronger eddy field acts to increase the vertical momentum transfer which enables topography to steer the current and thereby increase the meridional component of the mean flow. Currents with a non-zonal component are more susceptible to baroclinic instability (e.g., Arbic & Flierl, 2004) which thus produces a delayed amplification of the EKE response. This second mechanism describes a positive feedback between the eddy field and the mean currents which acts to enhance EKE over longer timescales.

The ensemble approach thus leads to the conclusion that changes in eddy activity in the Southern Ocean have a strong random character, even when averaged over a large spatial area and up to interannual time scales. This result argues for caution in interpreting observations of Southern Ocean eddies, which are necessarily based on a single, short realisation of the natural world. Given that eddies are critical for the Southern Ocean circulation, this result implies that predictability of the future Southern Ocean may be weaker than previously thought. The results outlined here also highlight the difficulty faced in distinguishing the processes that govern eddy dynamics in this system, and point to more systematic eddy identification and modeling studies to better isolate these processes.

## Data Availability Statement

The model output used in this study can be downloaded from the Zenodo repository at <https://doi.org/10.5281/zenodo.5835168>. The full OCCIPUT model dataset is available on request (mail to: [Thierry.Penduff@cnrs.fr](mailto:Thierry.Penduff@cnrs.fr)).

## References

- Arbic, B. K., & Flierl, G. R. (2004). Effects of mean flow direction on energy, isotropy, and coherence of baroclinically unstable beta-plane geostrophic turbulence. *Journal of Physical Oceanography*, *34*, 77–93. [https://doi.org/10.1175/1520-0485\(2004\)034<0077:eomfdo>2.0.co;2](https://doi.org/10.1175/1520-0485(2004)034<0077:eomfdo>2.0.co;2)
- Barnier, B., Madec, G., Penduff, T., Molines, J.-M., Treguier, A.-M., Le Sommer, J., et al. (2006). Impact of partial steps and momentum advection schemes in a global ocean circulation model at eddy-permitting resolution. *Ocean Dynamics*, *56*(5), 543–567. <https://doi.org/10.1007/s10236-006-0082-1>
- Bessières, L., Leroux, S., Brankart, J.-M., Molines, J.-M., Moine, M.-P., Bouttier, P.-A., et al. (2017). Development of a probabilistic ocean modelling system based on NEMO 3.5: Application at eddy resolution. *Geoscientific Model Development*, *10*(3), 1091–1106. <https://doi.org/10.5194/gmd-10-1091-2017>
- Brankart, J.-M., Candille, G., Garnier, F., Calone, C., Melet, A., Bouttier, P.-A., et al. (2015). A generic approach to explicit simulation of uncertainty in the nemo ocean model. *Geoscientific Model Development*, *8*(5), 1285–1297. <https://doi.org/10.5194/gmd-8-1285-2015>
- Cleveland, W. S. (1979). Robust locally weighted regression and smoothing scatterplots. *Journal of the American Statistical Association*, *74*(368), 829–836. <https://doi.org/10.1080/01621459.1979.10481038>
- Close, S., Penduff, T., Speich, S., & Molines, J.-M. (2020). A means of estimating the intrinsic and atmospherically-forced contributions to sea surface height variability applied to altimetric observations. *Progress in Oceanography*, *184*, 102314. <https://doi.org/10.1016/j.pocean.2020.102314>
- Constantinou, N. C., & Hogg, A. M. (2019). Eddy saturation of the Southern Ocean: A baroclinic versus barotropic perspective. *Geophysical Research Letters*, *46*(21), 12202–12212. <https://doi.org/10.1029/2019GL084117>
- Constantinou, N. C., & Hogg, A. M. (2021). Intrinsic oceanic decadal variability of upper-ocean heat content. *Journal of Climate*, *34*(15), 6175–6189. <https://doi.org/10.1175/JCLI-D-20-0962.1>
- De Verdière, A. C., & Huck, T. (1999). Baroclinic instability: An oceanic wavemaker for interdecadal variability. *Journal of Physical Oceanography*, *29*, 893–910.
- Dussin, R., Barnier, B., Brodeau, L., & Molines, J. M. (2016). The making of DRAKKAR forcing set DFS5. DRAKKAR/MyOcean Rep. 01-04-16. Retrieved from [https://www.drakkar-ocean.eu/publications/reports/report\\_DFS5v3\\_April2016.pdf](https://www.drakkar-ocean.eu/publications/reports/report_DFS5v3_April2016.pdf)
- Fu, L.-L., Chelton, D. B., Le Traon, P.-Y., & Morrow, R. (2010). Eddy dynamics from satellite altimetry. *Oceanography*, *23*(4), 14–25. <https://doi.org/10.5670/oceanog.2010.02>
- Greatbatch, R. J. (1994). A note on the representation of steric sea level in models that conserve volume rather than mass. *Journal of Geophysical Research*, *99*(C6), 12767–12771. <https://doi.org/10.1029/94JC00847>
- Hallberg, R., & Gnanadesikan, A. (2006). The role of eddies in determining the structure and response of the wind-driven Southern Hemisphere overturning: Results from the modeling eddies in the Southern Ocean (MESO) project. *Journal of Physical Oceanography*, *36*, 2232–2252. <https://doi.org/10.1175/JPO2980.1>
- Hogg, A. M., & Blundell, J. R. (2006). Interdecadal variability of the Southern Ocean. *Journal of Physical Oceanography*, *36*, 1626–1645. <https://doi.org/10.1175/JPO2934.1>
- Hogg, A. M., Meredith, M. P., Chambers, D. P., Abrahamson, E. P., Hughes, C. W., & Morrison, A. K. (2015). Recent trends in the Southern Ocean eddy field. *Journal of Geophysical Research-Oceans*, *120*, 1–267. <https://doi.org/10.1002/2014JC010470>
- Kiss, A. E., Hogg, A. M., Hannah, N., Boeira Dias, F., Brassington, G. B., Chamberlain, M. A., et al. (2020). ACCESS-OM2 v1.0: A global ocean-sea ice model at three resolutions. *Geoscientific Model Development*, *13*(2), 401–442. <https://doi.org/10.5194/gmd-13-401-2020>
- Leroux, S., Penduff, T., Bessières, L., Molines, J. M., Brankart, J. M., Sérazin, G., et al. (2018). Intrinsic and atmospherically forced variability of the AMOC: Insights from a large-ensemble ocean hindcast. *Journal of Climate*, *31*(3), 1183–1203. <https://doi.org/10.1175/JCLI-D-17-0168.1>
- Madec, G. (2012). NEMO ocean general circulation model reference manual. *International Report*, 27(1–386).
- Martínez-Moreno, J., Hogg, A. M., England, M. E., Constantinou, N. C., Kiss, A. E., & Morrison, A. K. (2021). Global changes in oceanic mesoscale currents over the satellite altimetry record. *Nature Climate Change*, *11*, 397–403. <https://doi.org/10.1038/s41558-021-01006-9>
- Martínez-Moreno, J., Hogg, A. M., & England, M. H. (2022). A near-global climatology of oceanic coherent eddies. *Journal of Geophysical Research-Oceans*. (submitted). <https://doi.org/10.1002/essoar.10506866.1>
- Martínez-Moreno, J., Hogg, A. M., Kiss, A. E., Constantinou, N. C., & Morrison, A. K. (2019). Kinetic energy of eddy-like features from sea surface altimetry. *Journal of Advances in Modeling Earth Systems*, *11*(10), 3090–3105. <https://doi.org/10.1029/2019MS001769>
- Meredith, M. P., & Hogg, A. M. (2006). Circumpolar response of Southern Ocean eddy activity to a change in the southern annular mode. *Geophysical Research Letters*, *33*(16). <https://doi.org/10.1029/2006GL026499>
- Morrison, A. K., & Hogg, A. M. (2013). On the relationship between Southern Ocean overturning and ACC transport. *Journal of Physical Oceanography*, *43*, 140–148. <https://doi.org/10.1175/JPO-D-12-057.1>
- Morrison, A. K., Waugh, D. W., Hogg, A. M., Jones, D. C., & Abernathy, R. P. (2022). Ventilation of the Southern Ocean Pycnocline. *Annual Review of Marine Science*, *14*(1), 405–430. <https://doi.org/10.1146/annurev-marine-010419-011012>

## Acknowledgments

AMH is grateful to the MEOM team at IGE, Université Grenoble Alpes, who supported his sabbatical and which led to this work. The results of this research have been achieved using the PRACE Research Infrastructure resource CURIE based in France at TGCC. This work is a contribution to the OCCIPUT and PIRATE projects. OCCIPUT has been funded by ANR through contract ANR-13-BS06-0007-01. PIRATE has been funded by CNES through the Ocean Surface Topography Science Team (OST-ST). WKD was funded by ANR-18-MPGA-0002 and NSF grants OCE-1941963, OCE-2023585 and OCE-2123632. NCC was funded by the Australian Research Council DECRA Fellowship DE210100749. This research was undertaken with the assistance of resources and services from the National Computational Infrastructure (NCI), which is supported by the Australian Government. Open access publishing facilitated by Australian National University, as part of the Wiley - Australian National University agreement via the Council of Australian University Librarians.

- Munday, D. R., Johnson, H. L., & Marshall, D. P. (2013). Eddy saturation of equilibrated circumpolar currents. *Journal of Physical Oceanography*, *43*, 507–532. <https://doi.org/10.1175/JPO-D-12-095.1>
- Patara, L., Böning, C. W., & Biastoch, A. (2016). Variability and trends in Southern Ocean eddy activity in 1/12° ocean model simulations. *Geophysical Research Letters*, *43*(9), 4517–4523. <https://doi.org/10.1002/2016GL069026>
- Penduff, T., Barnier, B., Terray, L., Bessières, L., Sérazin, G., Grégorio, S., et al. (2014). Ensembles of eddying ocean simulations for climate. *CLIVAR Exchanges No. 65. Special Issue on High Resolution Ocean Climate Modelling*, *19*(2), 26–29.
- Rousselet, L., Cessi, P., & Forget, G. (2021). Coupling of the mid-depth and abyssal components of the global overturning circulation according to a state estimate. *Science Advances*, *7*(21), eabf5478. <https://doi.org/10.1126/sciadv.abf5478>
- Santer, B. D., Wigley, T., Boyle, J., Gaffen, D. J., Hnilo, J., Nychka, D., et al. (2000). Statistical significance of trends and trend differences in layer-average atmospheric temperature time series. *Journal of Geophysical Research: Atmospheres*, *105*(D6), 7337–7356. <https://doi.org/10.1029/1999JD901105>
- Sérazin, G., Penduff, T., Barnier, B., Molines, J.-M., Arbic, B. K., Müller, M., & Terray, L. (2018). Inverse cascades of kinetic energy as a source of intrinsic variability: A global OGCM study. *Journal of Physical Oceanography*, *48*(6), 1385–1408. <https://doi.org/10.1175/JPO-D-17-0136.1>
- Sinha, A., & Abernathy, R. P. (2016). Time scales of Southern Ocean eddy equilibration. *Journal of Physical Oceanography*, *46*(9), 2785–2805. <https://doi.org/10.1175/JPO-D-16-0041.1>
- Zhang, Y., Chambers, D., & Liang, X. (2021). Regional trends in Southern Ocean eddy kinetic energy. *Journal of Geophysical Research: Oceans*, *126*. <https://doi.org/10.1029/2020jc016973>