



**HAL**  
open science

## What are the mechanisms of gastrointestinal lipases adsorption onto heterogenous biomimetic vegetal membranes?

Jeanne Kergomard, F Carrière, G Lambeau, Gilles Paboeuf, Nathalie Barouh, Pierre P. Villeneuve, Claire Bourlieu-Lacanal, V. Vié

### ► To cite this version:

Jeanne Kergomard, F Carrière, G Lambeau, Gilles Paboeuf, Nathalie Barouh, et al.. What are the mechanisms of gastrointestinal lipases adsorption onto heterogenous biomimetic vegetal membranes?. 7th International Conference on Food Digestion ICFD 2022, May 2022, Cork, Ireland. , pp.95. hal-03669301

**HAL Id: hal-03669301**

**<https://hal.science/hal-03669301>**

Submitted on 16 May 2022

**HAL** is a multi-disciplinary open access archive for the deposit and dissemination of scientific research documents, whether they are published or not. The documents may come from teaching and research institutions in France or abroad, or from public or private research centers.

L'archive ouverte pluridisciplinaire **HAL**, est destinée au dépôt et à la diffusion de documents scientifiques de niveau recherche, publiés ou non, émanant des établissements d'enseignement et de recherche français ou étrangers, des laboratoires publics ou privés.

# What are the mechanisms of gastrointestinal lipases adsorption onto heterogenous biomimetic vegetal membranes?

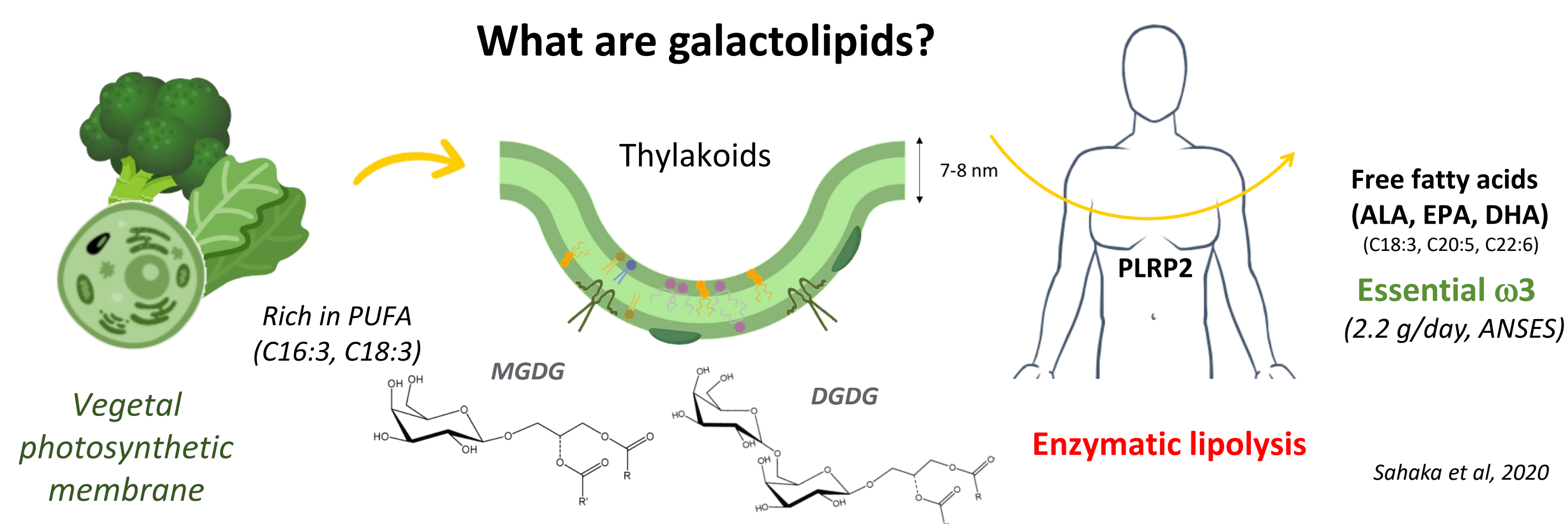
J. KERGOMARD<sup>1,2</sup>, F. CARRIÈRE<sup>3</sup>, G. LAMBEAU<sup>4</sup>, G. PABOEUF<sup>1</sup>, N. BAROUH<sup>5,6</sup>, P. VILLENEUVE<sup>5,6</sup>, C. BOURLIEU<sup>2</sup> AND V. VIÉ<sup>1\*</sup>

\*Jeanne.kergomard@univ-rennes1.fr, \*claire.bourlieu-lacanal@inrae.fr, \*veronique.vie@univ-rennes1.fr

**Objectives:** to characterize main digestive lipases adsorption onto heterogeneous biomimetic vegetal membrane of increasing complexity and their lipolytic activities using complementary biophysical tools (tensiometry, ellipsometry, atomic force microscopy) and *in vitro* digestion.

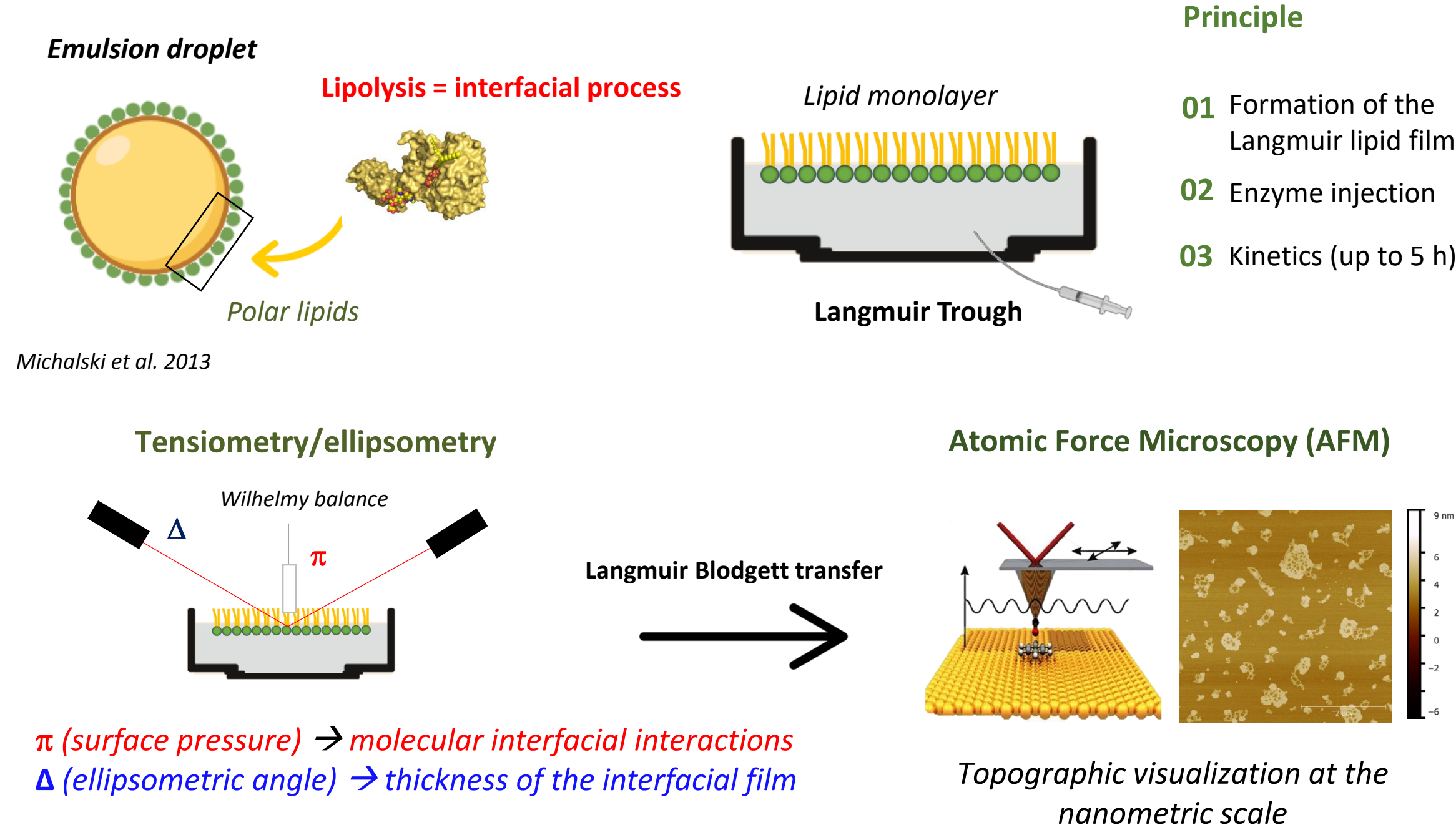
## Context

Gastrointestinal lipases are crucial for **lipid hydrolysis** and must get adsorbed onto the substrate **interface** prior lipolysis. Such adsorption has not been deeply investigated on biomimetic vegetal membranes containing **galactolipids** as backbone. We had previously demonstrated on model milk fat membrane that phase **heterogeneity** modulated lipase **adsorption**. We wanted to check whether this behavior was generic and the nature of lipolysis products released from such heterogeneous galactolipid based membranes.

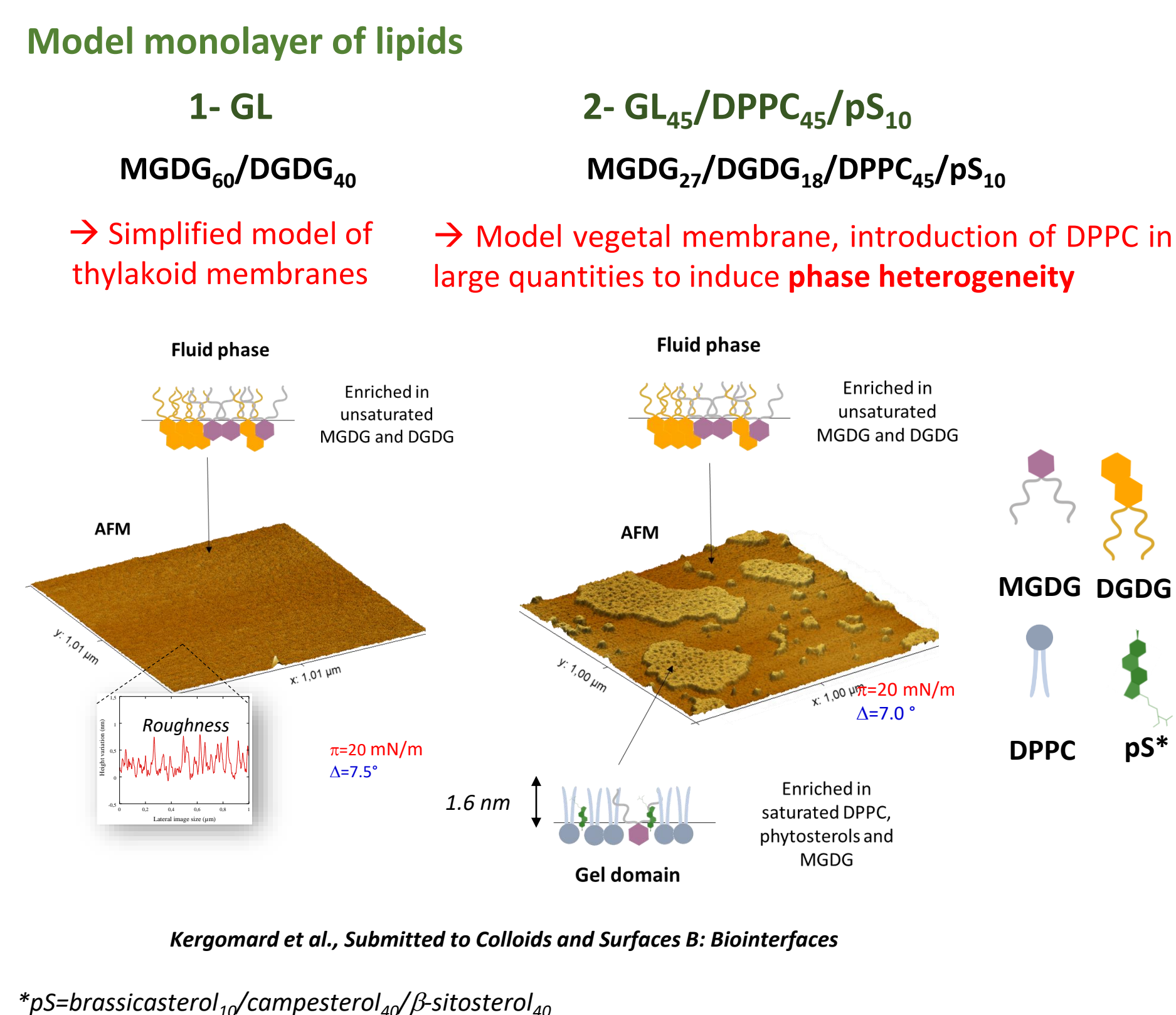


## Materials and Methods

### How did we proceed?

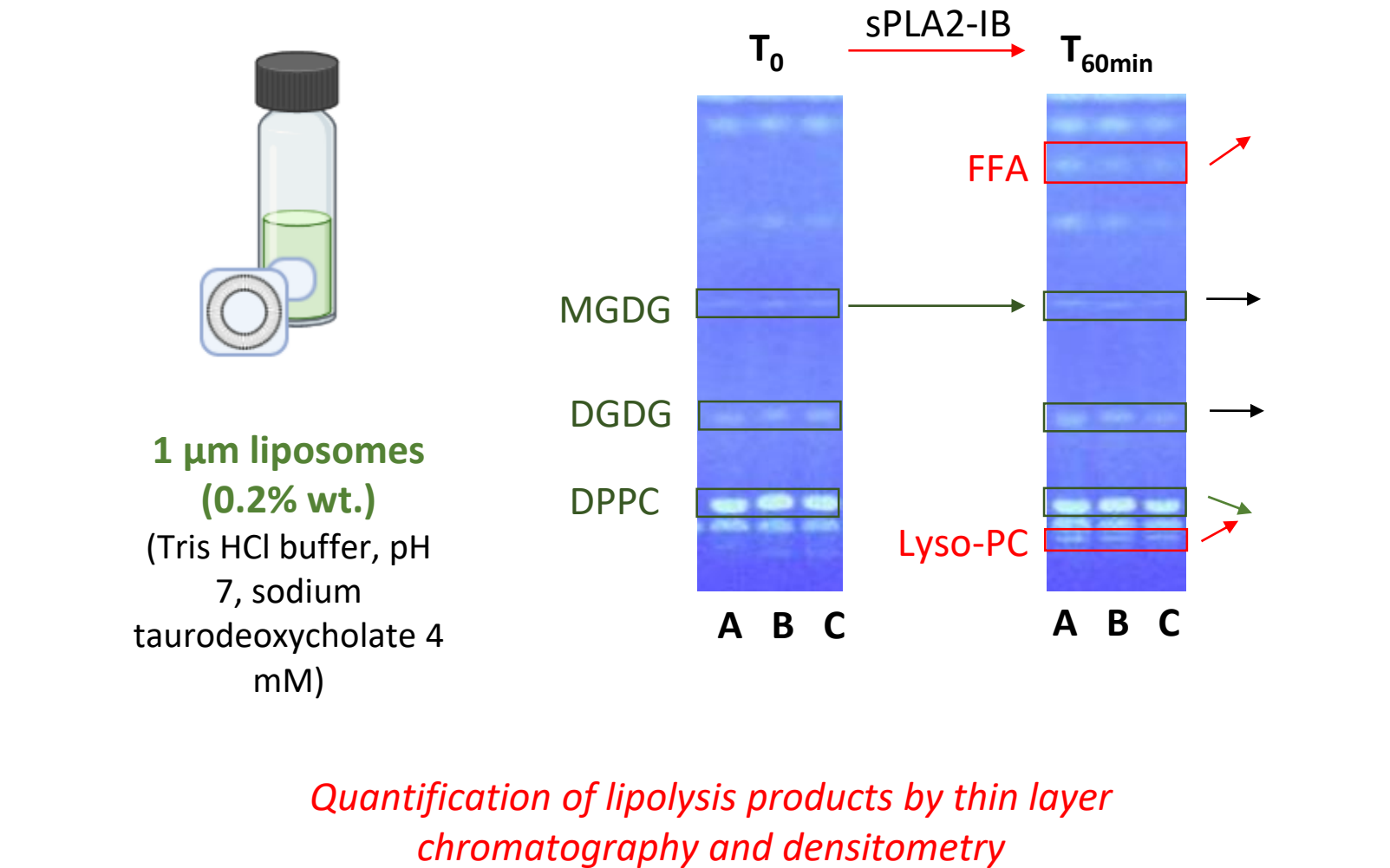


### What did we study?



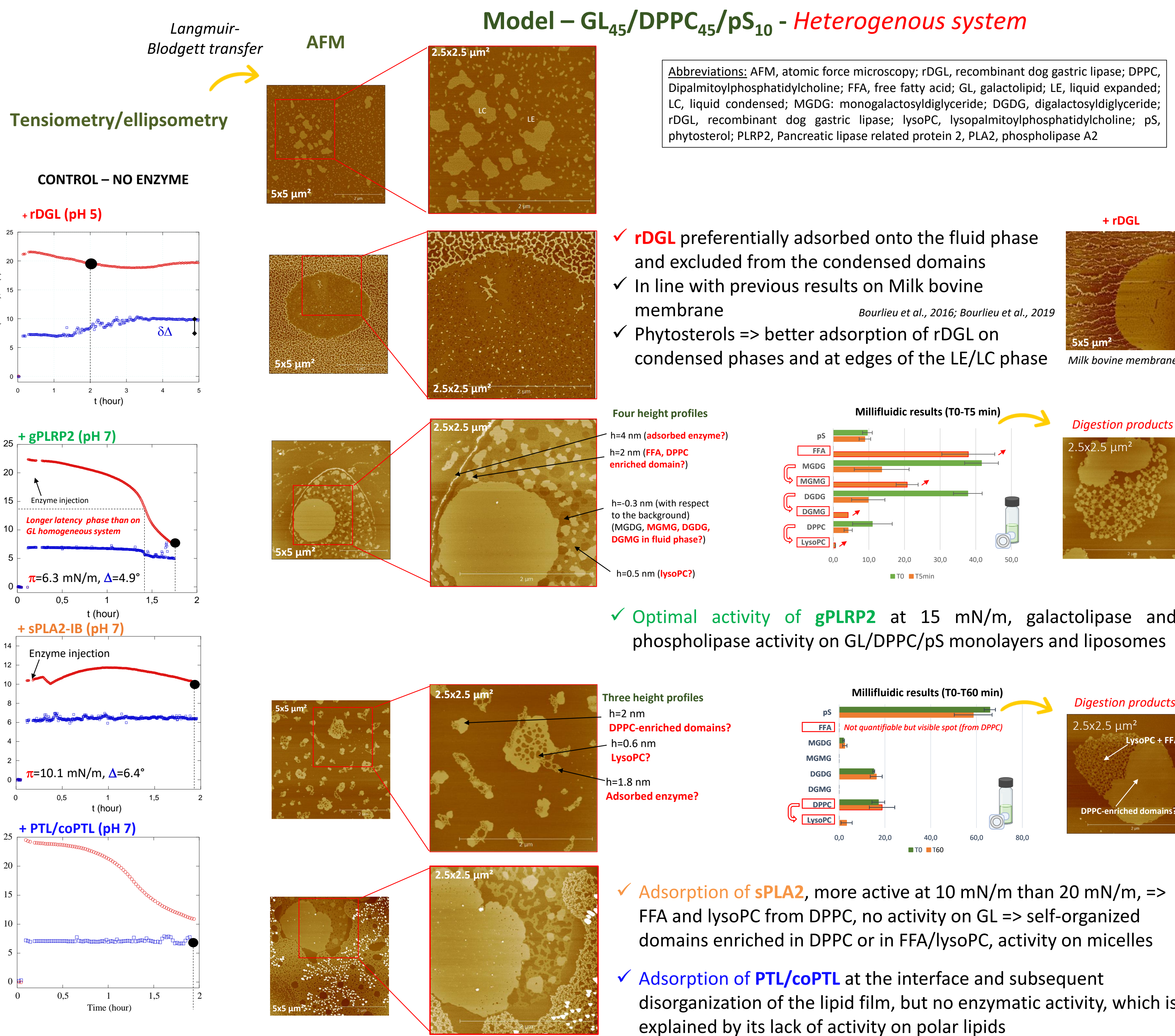
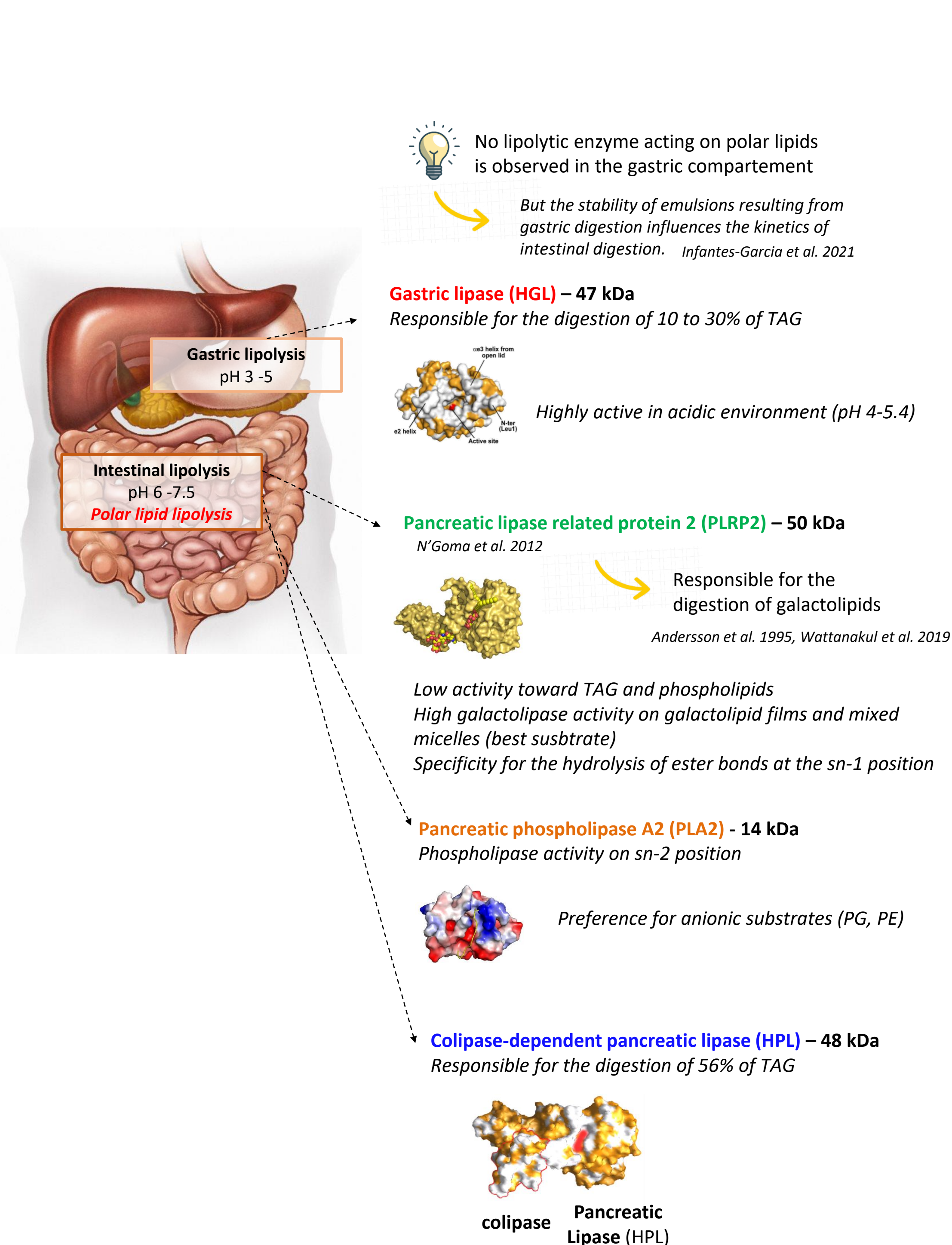
### Gastro-intestinal enzymes / microdigestions

- 01 Gastric lipase (DGL)  $\Rightarrow$  recombinant Dog gastric lipase – 17  $\mu$ g/mL
- 02 Pancreatic lipase protein-related 2 (PLRP2) – 32  $\mu$ g/mL
- 03 Pancreatic secreted phospholipase A2 (sPLA2-IB) – 32  $\mu$ g/mL
- 04 Pancreatic triacylglycerol lipase and its cofactor (PTL-coPTL) – 250  $\mu$ g/mL



## Results

### Enzymes at work in Humans



**Conclusions -** A strong surfactant property of GL and its preferential adsorption onto fluid lipid phase and at phase boundary were observed, in line with previous results on milk fat globule membrane. With PLRP2, changes in surface pressure indicated strong galactolipase activity and film reorganization. The injection of sPLA2-IB resulted in DPPC lipolysis only and changed the morphology of condensed domains. PTL/coPTL is adsorbed but has no activity. This study is a step forward to understand the interactions of gastrointestinal lipases with plant lipid membranes, an overlooked aspect of lipid digestion.