



HAL
open science

Biodiversity and phylogeny of Cocculinidae (Gastropoda: Cocculinida) in the Indo-West Pacific

Hsin Lee, Nicolas Puillandre, Yasunori Kano, Wei-Jen Chen, Sarah Samadi

► **To cite this version:**

Hsin Lee, Nicolas Puillandre, Yasunori Kano, Wei-Jen Chen, Sarah Samadi. Biodiversity and phylogeny of Cocculinidae (Gastropoda: Cocculinida) in the Indo-West Pacific. *Zoological Journal of the Linnean Society*, 2022, 10.1093/zoolinnean/zlac023 . hal-03664299

HAL Id: hal-03664299

<https://hal.science/hal-03664299>

Submitted on 10 May 2022

HAL is a multi-disciplinary open access archive for the deposit and dissemination of scientific research documents, whether they are published or not. The documents may come from teaching and research institutions in France or abroad, or from public or private research centers.

L'archive ouverte pluridisciplinaire **HAL**, est destinée au dépôt et à la diffusion de documents scientifiques de niveau recherche, publiés ou non, émanant des établissements d'enseignement et de recherche français ou étrangers, des laboratoires publics ou privés.



Biodiversity and phylogeny of Cocculinidae (Gastropoda: Cocculinida) in the Indo-West Pacific

| | |
|------------------|---|
| Journal: | <i>Zoological Journal of the Linnean Society</i> |
| Manuscript ID | ZOJ-10-2021-4781.R1 |
| Manuscript Type: | Original Article |
| Keywords: | classification < Phylogenetics, deep-sea < Geography, species delineation < Taxonomy, Gastropoda < Taxa |
| Abstract: | <p>The family Cocculinidae (Gastropoda: Cocculinida) consists of small, usually colorless benthic limpets living primarily at depth below 100 m and on decaying plant or animal remains. These habitats are difficult to sample and the knowledge about their species diversity, biogeography, ecology, and evolution is poor. To explore the species diversity of the Cocculinidae we examined 499 specimens collected from 196 sites, mainly explored during expeditions of the Tropical Deep-Sea Benthos program in the Indo-West Pacific (IWP). To propose species-hypotheses, we used an integrated approach to taxonomy in which we combined DNA-based methods, with morphological, geographical, and ecological considerations. To classify the species-hypotheses into genera, we used a combination of one mitochondrial and two nuclear genes fragments to reconstruct a phylogenetic tree. We then used six morphological characters to diagnose the identified genera. Our results revealed an exceptionally high diversity of the IWP Cocculinidae, with 51 species-hypotheses that were mostly not assigned to available species names. We also discovered a previously unknown type of copulatory structure in the group. At higher taxonomic level, we identified ten main clades within the family. While six of them match to existing genera, four others should be regarded as new genera awaiting formal description</p> |
| | |

1
2
3
4 **1 Biodiversity and phylogeny of Cocculinidae (Gastropoda: Cocculinida) in**
5 **2 the Indo-West Pacific**
6
7 3

8 4 HSIN LEE^{1,2}, NICOLAS PUILLANDRE¹, YASUNORI KANO³, WEI-JEN CHEN² and
9 5 SARAH SAMADI^{1*}
10 6

11
12
13
14 7 ¹*Institut de Systématique, Évolution, Biodiversité (ISYEB), Muséum National d'Histoire Naturelle, CNRS,*

15
16
17 8 *Sorbonne Université, EPHE, Université des Antilles, CP 51, 57 rue Cuvier, 75005 Paris, France*

18
19
20 9 ²*Institute of Oceanography, National Taiwan University, No. 1, Sec. 4, Roosevelt Road, Taipei 10617, Taiwan*

21
22
23 10 ³*Atmosphere and Ocean Research Institute, The University of Tokyo, 5-1-5, Kashiwanoha, Kashiwa-shi, Chiba,*

24
25
26 11 *Japan*
27
28
29 12
30 13

31
32 14 Running title: Biodiversity and phylogeny of Cocculinidae
33
34 15
35 16
36
37 17

38
39 18
40
41
42
43
44
45
46
47
48
49
50
51
52
53
54
55
56
57
58
59
60

ABSTRACT

19 The family Cocculinidae (Gastropoda: Cocculinida) consists of small, usually colourless
20 benthic limpets living primarily at depth below 100 m and on decaying plant or animal
21 remains. These habitats are difficult to sample and the knowledge about their species
22 diversity, biogeography, ecology and evolution is therefore poor. To explore the species
23 diversity of the Cocculinidae we examined 499 specimens collected from 196 sites, mainly
24 explored during expeditions of the *Tropical Deep-Sea Benthos* program in the Indo-West
25 Pacific (IWP). To propose species-hypotheses, we used an integrated approach to taxonomy
26 in which we combined DNA-based methods, with morphological, geographical and
27 ecological considerations. To classify the species-hypotheses into genera, we used a
28 combination of one mitochondrial and two nuclear gene fragments to reconstruct a
29 phylogenetic tree. We then used six morphological characters to diagnose the identified
30 genera. Our results revealed an exceptionally high diversity of the IWP Cocculinidae, with 51

1
2
3
4 31 species-hypotheses that were mostly not assigned to available species names. We also
5 32 discovered a previously unknown type of copulatory structure in the group. At higher
6 33 taxonomic level, we identified ten main clades in the family. While six of them matched
7 34 existing genera, four others should be regarded as new genera awaiting formal description.
8
9

10 35
11
12 36 ADDITIONAL KEYWORDS: classification – deep sea – organic fall – species delimitation –
13 37 sunken wood – wooden-steps hypothesis
14
15 38

17 39 INTRODUCTION

19 40
20 41 The diversity of the metazoans inhabiting deep-sea habitats remains poorly known with biases
21 42 towards larger organisms (Costello *et al.*, 2010; Lee *et al.*, 2019; Danovaro *et al.*, 2020) and
22 43 of some spectacular habitats (notably hydrothermal vents). The organic remains decaying on
23 44 the deep-sea floor are one of the poorly-studied deep-sea habitats where small and discreet
24 45 organisms are living (Saeedi *et al.*, 2019; Harbour *et al.*, 2021; Souza *et al.*, 2021). Sunken
25 46 pieces of wood are carried along rivers to the ocean, drift with ocean currents and then sink to
26 47 the ocean floor. Seagrass leaves, algal holdfast, bones of marine vertebrates and hardened
27 48 parts of invertebrates also remain for an extended period of time as sunken organic material
28 49 (Cunha *et al.*, 2013; Amon *et al.*, 2017; Plum *et al.*, 2017; Soltwedel *et al.*, 2018). They are
29 50 commonly colonized by invertebrate communities (Samadi *et al.*, 2010; Kano *et al.*, 2016:
30 51 table 1). In terms of diversity, mollusks (gastropods, bivalves and chitons) constitute the main
31 52 component of these communities (Turner, 1977; Wolff, 1979; Kiel & Goedert, 2006; Warén,
32 53 2011). Among the wood-associated mollusks, some groups have relatives in hydrothermal
33 54 vents and cold seeps, which are habitats that have been the focus of much of the deep-sea
34 55 research in the last few decades. Thanks to these relatives, often having large body sizes, they
35 56 have been more frequently studied. For instance, Distel *et al.* (2000) suggested that the giant
36 57 bathymodioline mussels living in vents and seeps have originated from tiny ancestors that
37 58 were living on sunken woods and other organic falls (the “wooden-steps” hypothesis). This
38 59 and many subsequent studies (e.g. Samadi *et al.*, 2007; Lorion *et al.*, 2009, 2010, 2013;
39 60 Fujiwara *et al.*, 2010; Thubaut *et al.*, 2013; Souza *et al.*, 2021; Zhang *et al.*, 2021) suggested
40 61 that exploratory efforts still mostly focus on vents and seeps and that this bias had hindered
41 62 the understanding of evolutionary history of deep-sea mussels.
42
43
44
45
46
47
48
49
50
51
52
53
54
55
56
57

58 63 Among the numerous and small cryptic taxa inhabiting the deep sea, Cocculinidae Dall,
59 64 1882 (Gastropoda: Cocculinida) encompasses limpet-shaped gastropods that live attached to

1
2
3
4 65 primarily organic substrates laying on the ocean floor such as sunken woods, cephalopod
5 66 beaks and fish and whale bones. They are grazers with a rhipidoglossan radula to feed most
6
7 67 probably on co-habiting micro-organisms that decompose these organic remains (Marshall,
8
9 68 ["1985"]1986; Lesicki, 1998). Their unique habitats, small sizes and simple shell shapes make
10
11 69 Cocculinidae one of the most taxonomically puzzling groups of gastropods. Presently, the
12
13 70 *World Register of Marine Species*, lists 52 valid species classified under seven recognized
14
15 71 genera (Moskalev, 1976; Marshall, [1985] 1986; Haszprunar, 1987; McLean, 1987; McLean
16
17 72 & Harasewych, 1995; Warén, 1996; Hasegawa, 1997; Leal & Harasewych, 1999; Ardila &
18
19 73 Harasewych, 2005; Zhang & Zhang, 2018; Chen & Linse, 2020).

20
21 74 Although relatively stable for the past 35 years, the taxonomy of the family
22
23 75 Cocculinidae, named by Dall in 1882, has undergone significant changes as the exploration of
24
25 76 deep-sea habitats progressed. For example, the monotypic genus *Fedikovella* Moskalev, 1976
26
27 77 was described to classify the newly sampled species *Fedikovella caymanensis* Moskalev,
28
29 78 1976 sampled from hadal depth of Cayman Trench in the Caribbean Sea. In the meantime, he
30
31 79 proposed five other new genera to revise the classification of the family. Similarly, the
32
33 80 monotypic genus *Macleaniella* Leal & Harasewych, 1999 was described to classify a new
34
35 81 species collected from 8595 m at the bottom of Puerto Rico Trench, the deepest point in the
36
37 82 Atlantic Ocean. This new species, named *Macleaniella moskalevi* Leal & Harasewych, 1999
38
39 83 differentiated from other cocculinids in having a unique inner septum in its shell. New data
40
41 84 and samples also allowed the revision of the family as well as the superfamily Cocculinoidea
42
43 85 (Thiele, 1909). For example, the previously recognized cocculinoid genera *Addisonia* Dall,
44
45 86 1882, *Cocculinella* Thiele, 1909, *Lepetella* Verrill, 1880 and *Pseudococculina* Schepman,
46
47 87 1908 are now placed in another superfamily, Lepetelloidea (Bouchet *et al.*, 2017).

48
49 88 Despite the establishment of the classification, the monophyly of the defined genera and
50
51 89 the phylogenetic hypotheses were not steadily tested, especially not with molecular tools.
52
53 90 Strong *et al.* (2003) conducted the first and only phylogenetic study for the Cocculinidae.
54
55 91 They examined 31 morphological characters for 15 cocculinoid species, resulting in a single
56
57 92 most parsimonious tree. The monophyly of superfamily Cocculinoidea (Cocculinidae +
58
59 93 Bathysciadiidae), family Cocculinida, and the genera *Cocculina* Dall, 1882 and *Coccopigyra*
60
94 B. A. Marshall, 1986 were all supported. In contrast, *Paracocculina* Haszprunar, 1987 and
95 *Cococrater* Haszprunar, 1987 were recovered as paraphyletic. *Fedikovella* and *Teuthirostria*
96 Moskalev, 1976 collectively formed a monophyletic group sister to all other cocculinids.

97
98
99
100
101
102
103
104
105
106
107
108
109
110
111
112
113
114
115
116
117
118
119
120
121
122
123
124
125
126
127
128
129
130
131
132
133
134
135
136
137
138
139
140
141
142
143
144
145
146
147
148
149
150
151
152
153
154
155
156
157
158
159
160
161
162
163
164
165
166
167
168
169
170
171
172
173
174
175
176
177
178
179
180
181
182
183
184
185
186
187
188
189
190
191
192
193
194
195
196
197
198
199
200
201
202
203
204
205
206
207
208
209
210
211
212
213
214
215
216
217
218
219
220
221
222
223
224
225
226
227
228
229
230
231
232
233
234
235
236
237
238
239
240
241
242
243
244
245
246
247
248
249
250
251
252
253
254
255
256
257
258
259
260
261
262
263
264
265
266
267
268
269
270
271
272
273
274
275
276
277
278
279
280
281
282
283
284
285
286
287
288
289
290
291
292
293
294
295
296
297
298
299
300
301
302
303
304
305
306
307
308
309
310
311
312
313
314
315
316
317
318
319
320
321
322
323
324
325
326
327
328
329
330
331
332
333
334
335
336
337
338
339
340
341
342
343
344
345
346
347
348
349
350
351
352
353
354
355
356
357
358
359
360
361
362
363
364
365
366
367
368
369
370
371
372
373
374
375
376
377
378
379
380
381
382
383
384
385
386
387
388
389
390
391
392
393
394
395
396
397
398
399
400
401
402
403
404
405
406
407
408
409
410
411
412
413
414
415
416
417
418
419
420
421
422
423
424
425
426
427
428
429
430
431
432
433
434
435
436
437
438
439
440
441
442
443
444
445
446
447
448
449
450
451
452
453
454
455
456
457
458
459
460
461
462
463
464
465
466
467
468
469
470
471
472
473
474
475
476
477
478
479
480
481
482
483
484
485
486
487
488
489
490
491
492
493
494
495
496
497
498
499
500
501
502
503
504
505
506
507
508
509
510
511
512
513
514
515
516
517
518
519
520
521
522
523
524
525
526
527
528
529
530
531
532
533
534
535
536
537
538
539
540
541
542
543
544
545
546
547
548
549
550
551
552
553
554
555
556
557
558
559
560
561
562
563
564
565
566
567
568
569
570
571
572
573
574
575
576
577
578
579
580
581
582
583
584
585
586
587
588
589
590
591
592
593
594
595
596
597
598
599
600
601
602
603
604
605
606
607
608
609
610
611
612
613
614
615
616
617
618
619
620
621
622
623
624
625
626
627
628
629
630
631
632
633
634
635
636
637
638
639
640
641
642
643
644
645
646
647
648
649
650
651
652
653
654
655
656
657
658
659
660
661
662
663
664
665
666
667
668
669
670
671
672
673
674
675
676
677
678
679
680
681
682
683
684
685
686
687
688
689
690
691
692
693
694
695
696
697
698
699
700
701
702
703
704
705
706
707
708
709
710
711
712
713
714
715
716
717
718
719
720
721
722
723
724
725
726
727
728
729
730
731
732
733
734
735
736
737
738
739
740
741
742
743
744
745
746
747
748
749
750
751
752
753
754
755
756
757
758
759
760
761
762
763
764
765
766
767
768
769
770
771
772
773
774
775
776
777
778
779
780
781
782
783
784
785
786
787
788
789
790
791
792
793
794
795
796
797
798
799
800
801
802
803
804
805
806
807
808
809
810
811
812
813
814
815
816
817
818
819
820
821
822
823
824
825
826
827
828
829
830
831
832
833
834
835
836
837
838
839
840
841
842
843
844
845
846
847
848
849
850
851
852
853
854
855
856
857
858
859
860
861
862
863
864
865
866
867
868
869
870
871
872
873
874
875
876
877
878
879
880
881
882
883
884
885
886
887
888
889
890
891
892
893
894
895
896
897
898
899
900
901
902
903
904
905
906
907
908
909
910
911
912
913
914
915
916
917
918
919
920
921
922
923
924
925
926
927
928
929
930
931
932
933
934
935
936
937
938
939
940
941
942
943
944
945
946
947
948
949
950
951
952
953
954
955
956
957
958
959
960
961
962
963
964
965
966
967
968
969
970
971
972
973
974
975
976
977
978
979
980
981
982
983
984
985
986
987
988
989
990
991
992
993
994
995
996
997
998
999
1000

1
2
3 98 lecithotrophic larvae (Young *et al.*, 2013) suggests limited dispersal ability and many
4
5 99 geographically restricted species have been defined. In the Indo-West Pacific (IWP), the
6
7 100 focused area of the present study, 30 species in four genera are currently recognized.
8
9 101 *Cocculina*, the most studied genus of the family, contains 20 IWP species (e.g. Watson, 1886;
10
11 102 Schepman, 1908; Thiele, 1925; Kuroda & Habe, 1949; Hasegawa, 1997; Zhang & Zhang,
12
13 103 2018). *Coccopygia* includes seven IWP species with five possible endemics in the waters
14
15 104 around New Zealand (Marshall, [1985] 1986) and two others distributed in the north-western
16
17 105 Pacific including the seas around Japan, Korea and Taiwan (Kuroda & Habe, 1949;
18
19 106 Hasegawa, 1997). *Cococrater* contains the type species *C. radiatus* (Thiele, 1903) from off
20
21 107 Sumatra as the only IWP member of the genus. *Paracocculina* is composed only of two IWP
22
23 108 species, namely *P. cervae* (C. A. Fleming, 1948) from off New Zealand and *P. laevis* (Thiele,
24
25 109 1903) from off Sumatra, Indonesia.

24 110 In this study, we aim at exploring the species diversity and phylogeny of the
25
26 111 Cocculinidae by broadly sampling the upper bathyal habitats in the tropical IWP. As it is clear
27
28 112 that the systematic investigations cannot rely solely, or even primarily, on morphological
29
30 113 examination (e.g. Puillandre *et al.*, 2017; Razkin *et al.*, 2017; Nantararat *et al.*, 2019; Horsáková
31
32 114 *et al.*, 2020), we here use an integrated approach by combining evidence from morphology,
33
34 115 geography, ecology and DNA-based species delimitation. We then assigned the inferred IWP
35
36 116 species into monophyletic groups or genera based on the molecular phylogenetic
37
38 117 reconstruction of the Cocculinidae. We also examine how useful are the six morphological
39
40 118 characters in the redefinition of the existing genera and the definition of new genus-level
41
42 119 clades.

43 121 MATERIAL AND METHODS

44 122 SAMPLE COLLECTION AND SELECTION

45 123
46 124
47 125 The specimens examined were mostly collected during 21 IWP expeditions of the *Tropical*
48
49 126 *Deep-Sea Benthos* (TDSB) program led by the Muséum national d'Histoire naturelle
50
51 127 (MNHN) and the Institut de Recherche pour le Développement (IRD), in collaboration with
52
53 128 the National Taiwan University (NTU) and the National Taiwan Ocean University (NTOU),
54
55 129 between 2004 and 2018: AURORA 2007, BIOPAPUA, BOA1, CONCALIS, DONGSHA
56
57 130 2014, EBISCO, EXBODI, KAVALAN 2018, KAVIENG 2014, MADEEP, MAINBAZA,
58
59
60

1
2
3 131 MIRIKY, NANHAI 2014, NORFOLK 2, PANGLAO 2004, PANGLAO 2005, PAPUA
4
5 132 NIUGINI, SALOMON 2, SALOMONBOA 3, SANTO 2006 and TAIWAN 2013. During the
6
7 133 listed expeditions (see for more details <https://expeditions.mnhn.fr>) specific efforts were made
8
9 134 by the on-board scientific teams to collect the fauna associated with plant remains (reviewed
10
11 135 notably in Samadi *et al.*, 2010 and Pante *et al.*, 2012). The sampling covered the areas
12
13 136 surrounding Taiwan (including the South China Sea and East China Sea), the Philippines
14
15 137 (Bohol and Sulu Seas and the Pacific coast), Papua New Guinea (Bismarck Sea and Solomon
16
17 138 Sea), Solomon Islands (Solomon Sea), New Caledonia (Coral Sea), Vanuatu (Coral Sea) and
18
19 139 Madagascar (in the Mozambique channel) (Fig. 1). Most specimens were found attached on
20
21 140 organic substrates collected by dredging or trawling at depths ranging from 100 to 1500
22
23 141 meters. Some specimens were collected from organic substrates that were deployed on the
24
25 142 deep-sea floor as traps to attract the recruitment of larvae (Samadi *et al.*, 2010 for more
26
27 143 details). Additional specimens were collected from areas surrounding Japan and from East
28
29 144 China Sea (Fig. 1; Table S1). We also included several Caribbean specimens from the
30
31 145 expedition KARUBENTHOS 2 from TDSB program available in the collection of Muséum
32
33 146 national d'Histoire naturelle (MNHN) to increase sample diversity and to assign generic
34
35 147 names to clades; the type species of *Cocculina* and *Macleaniella* were described from this
36
37 148 area.

38
39 149 From the samples collected at 250 sampling stations during these 21 IWP expeditions of
40
41 150 the TDSB program, we gathered thousands of “cocculiniform” limpets. Cocculiniforms refer
42
43 151 to both of the phylogenetically distant cocculinoids and lepetelloids (Ponder & Lindberg,
44
45 152 1997; Bouchet *et al.*, 2017; Lee *et al.*, 2019), which are barely differentiable by examining the
46
47 153 shape and ornamentation of the teleoconch (post-metamorphic shell) alone. Scientific teams
48
49 154 on board of research vessels therefore sorted all cocculiniform limpets and preserved them in
50
51 155 95% ethanol. The number of specimens per sampling station was uneven, and these
52
53 156 specimens often contained multiple morphotypes with different relative abundances. To cover
54
55 157 at best the species diversity, we first sorted the specimens from each station into morphotypes
56
57 158 and then selected one to three specimens from each morph (Fig. 2). This resulted in our
58
59 159 selection of 709 cocculiniform specimens for genetic and morphological analyses.

60
160

161 DNA SEQUENCING

162

163 We extracted total genomic DNA from the muscle tissue of 710 specimens using either the

1
2
3
4 164 automated extractor LabTurbo 48 Compact System and LGD 480-220 kits (Taigene
5 165 BioSciences Corp., Taiwan) or the NucleoSpin 96 Tissue kit (Macherey-Nagel, France) with
6
7 166 the automated pipetting system epMotion 5075 according to the manufacturers' instruction.

8
9 167 We amplified for all or a subset (see below) of these specimens a barcode fragment of
10 168 the mitochondrial *cytochrome c oxidase subunit 1* (*cox1*), a fragment of the nuclear *Histone*
11 169 *H3* (*H3*) gene and a C1–D2 region of the *28S ribosomal RNA* gene (*28S*). We amplified the
12 170 *cox1* fragment for all specimens mainly using the Folmer *et al.*'s (1994) primers LCO-1490
13 171 (5'-GGT CAA CAA ATC ATA AAG ATA TTG G-3') and HCO-2198 (5'-TAA ACT TCA
14 172 GGG TGA CCA AAA AAT CA-3'). However, these universal primers did not always work
15 173 and an alternative primer set was designed for the amplification and sequencing: CoccCOI-
16 174 43F (5'- GGA ACA CTY TAT ATT YTA TTA GG - 3') and CoccCOI-631R (5'- GTN GTA
17 175 TTR AAA TTT CGA TC - 3'). For a subset of the specimens, we also amplified a fragment
18 176 of the *28S* gene using the C1 (5'- ACC CGC TGA ATT TAA GCA T-3') and D2 (5'-TCC
19 177 GTG TTT CAA GAC GGG-3') primer set (Chisholm *et al.*, 2001) and a fragment of the *H3*
20 178 gene using the primers H3F1 (5'-ATG GCT CGT ACC AAG CAG ACV GC-3') and H3R1
21 179 (5'-ATA TCC TTR GGC ATR ATR GTG AC-3') (Colgan *et al.*, 1998).

22
23
24 180 We performed the PCR reactions in 20 μ l, using 1–3 μ l of DNA, 1 \times reaction buffer, 1.25
25 181 mM MgCl₂, 0.26 mM dNTP, 0.3 μ M of each primer and 1.5 unit of Q-Bio Taq
26 182 (MPBiomedicals, LLC., USA). We started the PCR with a cycle of 94°C for 5 min, followed
27 183 by 35 cycles of denaturation step (94°C, 30 s), annealing step (51°C for *cox1*, 56°C for *28S* and
28 184 53°C for *H3*, 30 s) and elongation step (72°C, 45 s for *cox1*, 1 min for *28S* and 30 s for *H3*)
29 185 and a final elongation step for 5 min (72°C). The purification and sequencing for PCR
30 186 products were mainly carried out by Eurofins Scientific (France). For others the purification
31 187 was conducted with the AMPure magnetic bead clean-up protocol (Agencourt Bioscience
32 188 Corp.) and the sequencing was performed at the Center of Biotechnology, National Taiwan
33 189 University.

34
35
36 190 The obtained DNA sequence chromatograms were visualized, edited and assembled
37 191 using CodonCode Aligner v.6.0.2 (Codoncode Corporation, Dedham, MA, USA). The edited
38 192 sequences were manually aligned and compiled using the software Se-AL v. 2.0 (Rambaut,
39 193 1996). However, some *H3* sequences (n = 39) presented more than one peak at multiple
40 194 nucleotide positions of the sequences. We thus suspected a presence of paralogs or
41 195 contaminant sequences. To resolve this, we pooled the PCR products of those 39 problematic
42 196 *H3* samples to construct a library using the NEB next Library preparation kit (New England
43
44
45
46
47
48
49
50
51
52
53
54
55
56
57
58
59
60

1
2
3 197 Biolabs, MA, USA) with a single *H3* PCR per tag (Hinsinger *et al.*, 2015) for next generation
4 198 sequencing (NGS) under the Ion Torrent system (Life technologies, France). Template
5 199 amplifications of the library were performed by emulsion PCR on an Ion OneTouch robotic
6 200 system, and the subsequent sequencing was performed by an Ion Torrent PGM sequencer
7 201 using Hi-Q chemistry (Life technologies, France). The sequences were demultiplexed *a*
8 202 *posteriori* (Hinsinger *et al.*, 2015) and assembled using Geneious R9 (Biomatters Ltd.,
9 203 Auckland, New Zealand). To rule out the possibility of contamination, we compared the
10 204 obtained sequences using the BLAST search as implemented in NCBI GenBank and
11 205 topologies of phylogenetic trees inferred from individual gene fragments.
12
13
14
15
16
17
18
19
20

21 207 PRIMARY SPECIES HYPOTHESES (PSHs)

22 208
23
24 209 Following Castelin *et al.* (2012) and Puillandre *et al.* (2012b), we defined an integrative
25 210 workflow for species delimitation of the sampled cocculinids (Fig. 2).

26 211 We first examined the 589 *cox1* sequences that we successfully obtained from 709
27 212 specimens. We compared these sequences to each other by reconstructing preliminary
28 213 maximum likelihood (ML) trees. The data matrix for the ML reconstruction also included
29 214 GenBank sequences of seven cocculinoids, 12 vetigastropods including nine lepetelloids and
30 215 one cephalopod (data not shown). We considered that the new sequences represent true
31 216 cocculinids when they form a well-supported clade with sequences from GenBank attributed
32 217 to this family. Conversely, we considered that we should probably attribute those grouping
33 218 with sequences attributed to other vetigastropods to lepetelloids. We also used the same
34 219 sequences in a BLAST-search to see if there was any cocculinoid sequence in the top five hits
35 220 (sorted by Max Score). Consequently, we concluded that 498 specimens from 187 of our
36 221 sampling stations were true cocculinoids (Table S1); the collection sites of these specimens
37 222 are shown in Figure 1.

38 223 We analysed 517 *cox1* sequences including the 498 newly obtained and 19 GenBank
39 224 sequences with two methods of species delimitation: Automatic Barcode Gap Discovery
40 225 (ABGD) (Puillandre *et al.*, 2012a) and Bayesian Poisson Tree Processes (bPTP) model
41 226 (Zhang *et al.*, 2013). We collected from GenBank (listed in Table S1 with available
42 227 information on the origin of the sequences) sequences attributed to *Cocculina messingi*
43 228 McLean & Harasewych, 1995 (AY377731, AY923910 and EU530108), *Cocculina*
44 229 *enigmadonta* C. Chen & Linse, 2020 (MN539277–MN539281), *Coccapigya punctoradiata*
45
46
47
48
49
50
51
52
53
54
55
56
57
58
59
60

1
2
3 230 (Kuroda & Habe, 1949) (AB365259 and AB238590), *Cocculina subcompressa* Schepman,
4 231 1908 (GQ160744), *Coccopigya hispida* B. A. Marshall, 1986 (AY296823 from the voucher
5 232 NMNZ M075188, which is a paratype of the species) and seven sequences unidentified at the
6 233 species level: Cocculinidae sp. (HG942540), *Cocculina* spp. (AB238591, AB238592,
7 234 GQ160743 and GQ160745) and *Coccopigya* spp. (FM212785 and FM212786). ABGD, an
8 235 exploratory tool based on pairwise genetic distances, detects if there is a significant gap
9 236 between inter- and intraspecific variation (the so-called barcode gap). We used the online
10 237 version of ABGD (bioinfo.mnhn.fr/abi/public/abgd/) with K2P distance (Kimura, 1980) and
11 238 other default parameters. We also delineated the cocculinids into species with bPTP on the
12 239 bPTP webserver (<http://species.h-its.org/ptp/>) with 500000 MCMC generations and the
13 240 default parameters. We used bPTP, rather than the Generalized Mixed Yule Coalescent
14 241 method (Pons *et al.*, 2006), by following Tang *et al.* (2014) who suggested its robustness with
15 242 a user-specified tree (here a rooted ML tree inferred from a *cox1* dataset with all cocculinid
16 243 haplotypes and two bathysciadiid sequences as outgroup taxa). We then proposed PSHs for
17 244 clades delimited by both ABGD and bPTP. Finally, we evaluated different lines of evidence
18 245 to define secondary species hypotheses (Fig. 2).
19
20
21
22
23
24
25
26
27
28
29
30
31
32

33 247 SECONDARY SPECIES HYPOTHESES (SSHs)

34 248
35
36 249 To decide if we turn the detected PSH into secondary species hypotheses (SSHs) we used
37 250 additional criteria as described in Figure 2. The main additional sources of evidences were
38 251 firstly the nuclear genetic data that are unlinked to the mitochondrial data used to establish the
39 252 PSH, and then the comparisons of the geographic range and the ecological data (depth and
40 253 habitat) with the sister PSH.
41
42
43 254 The recovery of a given PSH as a clade in both mitochondrial- and nuclear-gene trees strongly
44 255 supports the distinctiveness of the species (Pante *et al.*, 2015). Consequently, we
45 256 reconstructed phylogenetic trees using 28S sequences (for more details notably on alignment
46 257 methods see “Phylogenetic inference”). We tried to sequence a fragment of the 28S gene for
47 258 up to five representatives of each PSH defined with the *cox1* gene and for another specimen
48 259 from the Caribbean Sea for which we failed to obtain a *cox1* sequence (MNHN-IM-2013-
49 260 60187; Table S1). The first 415 base pairs of the 28S fragment were too conserved at the
50 261 species level, but useful at a deeper phylogenetic scale. Consequently, we reconstructed a tree
51 262 based only on this conserved part (hereafter referred to as the 28S-gene “master” tree) to
52
53
54
55
56
57
58
59
60

1
2
3 263 define main lineages. We then reconstructed a subtree for each main lineage by aligning the
4 264 entire length of the *28S* fragment, which were partly too variable to be aligned with other
5 265 lineages (hereafter referred to as the *28S*-gene “sub” trees). We regarded a PSH as a potential
6 266 SSH when its component individuals constituted a supported phylogenetic clade in the *28S*
7 267 subtree or if they shared an identical *28S* sequence.

8 268 The paucispiral protoconch of cocculinids indicates a lecithotrophic larval development
9 269 and thus a limited dispersal capability (Young *et al.*, 2013). Closely related PSHs separated by
10 270 a geographic barrier, such as a landmass, an oceanic threshold or current, might have diverged
11 271 under an allopatric process of genetic differentiation, and we thus combined them into the
12 272 same SSH. On the contrary, the presence of sister PSHs in the same geographic region
13 273 suggests the presence of an effective reproductive isolation mechanism. In this case, we
14 274 maintained the sister PSHs as separate SSHs. We here defined 11 geographic regions based
15 275 on the distributions of landmasses, boundaries of sea basins and major ocean currents: seas
16 276 surrounding Japan (JP), East China Sea (ECS), seas surrounding Taiwan plus the South China
17 277 Sea (TW), seas surrounding the Philippines (PHI), Bismarck Sea (BIS), Solomon Sea (SOL),
18 278 seas surrounding Vanuatu (VAN), seas surrounding New Caledonia (NC), Coral Sea (COR),
19 279 sea off North Madagascar (MAD) and Mozambique Channel (AFR) (Fig. 1).

20 280 Depth is a major element of the ecological niche of benthic species (e.g. Stuart *et al.*,
21 281 2017). In a given geographic area, two closely related PSHs displaying distinct depth ranges
22 282 have probably distinct ecological niches and were therefore considered as separate SSHs.
23 283 However, the exact depth of the occurrence of the sampled specimens is difficult to determine
24 284 because a trawling or dredging operation starts and ends at different depths. To estimate the
25 285 bathymetric range of each proposed PSH, we followed the method used by Bouchet *et al.*
26 286 (2008:15), taking the inner values of the deepest and shallowest stations. For those PSHs that
27 287 contained only single specimen, we kept the original operating depth range of the station.

28 288 In taxonomic literature, cocculinid species are often described as specifically associated
29 289 to a given type of organic substrate (e.g. Zhang & Zhang, 2018). The field data allowed us to
30 290 determine on which organic substrates the specimens were collected and thus to highlight a
31 291 potential association of a PSH to a specific substrate. We considered that sister PSHs
32 292 associated to distinct substrates may be considered as different SSHs.

33 293

34 294

35 295

BETA DIVERSITY ANALYSIS

1
2
3 296 To estimate the dissimilarity of cocculinid species diversity among stations from the 11
4 297 geographic regions defined above, we used non-metric multidimensional scaling (NMDS)
5 298 plots based on the Jaccard similarity coefficient with the presence/absence data matrix,
6 299 implemented in the R packages “vegan” (Oksanen *et al.*, 2019).
7
8
9

10 300

11 301 PHYLOGENETIC INFERENCE WITHIN THE COCCULINIDAE

12 302

13
14
15 303 To examine the relationships among the delimited species (SSHs) and to revise the genus-
16 304 level classification of the Cocculinidae, we inferred phylogenetic trees based on three genes.
17 305 To complement the *cox1* and *28S* datasets we employed a *H3* dataset obtained using both
18 306 Sanger and NGS technics. This *H3* dataset contained representatives from each SSH,
19 307 including sequences extracted from GenBank (Table S1). We aligned the *cox1* and *H3*
20 308 sequences by eye and the *28S* using the automatic multiple alignment tool implemented in
21 309 MAFFT ver. 7 with default parameters (Katoh & Standley, 2013).
22
23
24
25
26

27 310 We compiled a combined dataset with the *cox1*, *28S* and *H3* sequences for a common set
28 311 of 140 taxa, including two distant outgroups of Neomphalida (*Melanodrymia aurantiaca*
29 312 Hickman, 1984 and *Peltospira smaragdina* Warén & Bouchet, 2001) and the two
30 313 bathysciadiids used for species delimitation. The dataset included at least one representative
31 314 of each SSH (Table S1).
32
33
34
35

36 315 We reconstructed phylogenetic trees with the partitioned ML method using the *cox1*
37 316 dataset, reduced *cox1* dataset for bPTP, *28S* master dataset, *28S* sub datasets, *H3* dataset and
38 317 the combined dataset implemented in RAxML v.8.0 (Stamatakis, 2014). The GTR+G
39 318 substitution model was employed for the analyses because RAxML only provides GTR-
40 319 related models of rate heterogeneity. Partitions were set by genes and for *cox1* and *H3* by
41 320 codon positions. Nodal support was assessed by bootstrapping (Felsenstein, 1985) with 1000
42 321 pseudoreplicates.
43
44
45
46
47

48 322 For the combined dataset, we also performed a Bayesian inference (BI) using MrBayes
49 323 v.3.2.6 (Ronquist *et al.*, 2012) on the CIPRES Science Gateway (Miller *et al.*, 2010), with eight
50 324 Markov chains in two parallel runs for 30000000 generations, a sampling frequency of one tree
51 325 per thousand generations and a heating temperature of 0.02. The convergence of the likelihood
52 326 scores for parameters was further evaluated using Tracer v.1.6 (Rambaut *et al.*, 2014) to make
53 327 sure that all ESS values were over 200. To be consistent with the ML analysis, we used the
54 328 same partitions and the same GTR+G substitution model for the BI method.
55
56
57
58
59
60

329

330

MORPHOLOGICAL CHARACTERIZATION

331

332 We used four morphological characters to complete the morphological diagnosis of the SSHs
333 and to guide the required final revision of the cocculinids. The shell shape, teleoconch
334 structure, position of the copulatory organ and presence or absence of epipodial tentacles, are
335 characters commonly used in the literature to describe cocculinid species. We thus divided the
336 examined specimens into morphogroups by identifying the character states as follows (Table
337 S2).

338 *Shell shape.* We classified the shapes of the examined cocculinid shells into round (oval
339 to conical) or spindle-shaped.

340 *Teleoconch sculpture.* Most cocculinid species have a patelliform teleoconch with simple
341 radial ribs and fine concentric growth lines (Fig. 3A), radial ribs with pits and periostracal
342 spines (Fig. 3B), plainly raised radial ribs (Fig. 3C), a clathrate sculpture with concentric lines
343 more prominent than axial ribs (Fig. 3D) or a strong concentric sculpture (Fig. 3E). Other
344 cocculinids have a smooth teleoconch with indistinct growth lines only (Fig. 3F).

345 *Copulatory organ.* The copulatory organ of cocculinids is highly variable and has been
346 considered a useful character for generic diagnoses (Haszprunar, 1987). We observed four
347 types of copulatory organs at different positions. These were associated with or branched
348 from the right cephalic tentacle (Fig. 4A), the anterior right corner of the foot (Fig. 4B), the
349 right neck under the oral lappet (Fig. 4C) or the right mantle margin (Fig. 4D).

350 *Epipodial tentacle.* All cocculinids except *Coccopigyra* species have a pair of epipodial
351 tentacles on the posterior foot (Marshall, [1985] 1986; Strong *et al.*, 2003).

352 We then assigned these groups to the existing genera according to the taxonomic
353 literature wherever possible (Marshall, [1985] 1986; Haszprunar, 1987; McLean, 1987;
354 McLean & Harasewych, 1995; Leal & Haszprunar, 1999).

355 To complement the description of the new genera identified by our molecular analysis,
356 we also coded the variability of the protoconch and the radula. These characters can only be
357 observed under the scanning electron microscopy (SEM). For the preparation of the radula,
358 we pulled out the entire radular ribbon by hand dissection and treated it with diluted bleach
359 until surrounding tissue was completely dissolved. After rinsed several times with distilled
360 water, the radula was unfolded and then mounted on a stub. We conducted the SEM
361 observation mainly at MNHN and some at the Atmosphere and Ocean Research Institute

362 (AORI), the University of Tokyo.

363 *Protoconch*. A reticulate sculpture is dominant in the protoconchs of the Cocculinidae
364 (Fig. 5A). However, in some cocculinids the protoconch shows concentric lines in the first
365 half and smooth in the last half (Fig. 5B).

366 *Radula*. The rachidian tooth of the cocculinoid radula is characterized by overhanging
367 cusps, which may be present or obsolete (Strong *et al.*, 2003). Then, we distinguished the
368 radula based on two features, the shape of the rachidian and the number of cusps on the
369 rachidian. We defined six distinct types of the cocculinid rachidian tooth: (a) “obsolete”, no
370 rachidian observed (Fig. 5C); (b) “acuspate-flat”, tip flat without a cusp (Fig. 5D); (c)
371 “unicuspidid narrow”, tip narrow with a pointed cusp (Fig. 5E); (d) “unicuspid broad”, tip
372 broad and pointed (Fig. 5F); (e) “multicuspidid narrow”, tip narrow with more than one cusp
373 (Fig. 5G); and (f) “multicuspid broad”, tip broad with more than one cusp (Fig. 5H).

375 RESULTS

377 DATASETS FOR SPECIES DELIMITATION

379 The final alignment of the *cox1* dataset contained 657-bp long sequences from 498 sampled
380 cocculinids and 19 GenBank entries, plus two bathysciadiids for rooting. The inferred
381 phylogenetic tree is presented in Figure S1. The terminal taxon labels are composed of two
382 letters, corresponding to eight morphogroups as defined with the four primary morphological
383 characters (shell shape, teleoconch sculpture, conditions of copulatory and epipodial tentacles;
384 Tables 1, S3), followed by a number, corresponding to PSHs (see below), namely MA1–
385 MA12, MB1–MB10, MC1–MC19, MD1–MD8, ME1–ME3, MF1–MF9, MG1–MG18 and
386 MH1–MH2.

387 We aligned 415 bp of the sequences from the 147 samples successfully sequenced
388 (including one outgroup) in the 28S “master” dataset. The inferred ML tree allowed us to
389 reveal seven genetically distinct clades or groups (Fig. S2). Based on this phylogenetic result,
390 we compiled seven subdatasets, including 28S-a (404 bp, 14 samples), 28S-b (816 bp, 39
391 samples), 28S-c (800 bp, 18 samples), 28S-d (408 bp, 13 samples), 28S-e (731 bp, 7 samples),
392 28S-f (791 bp, 20 samples) and 28S-g (811 bp, 35 samples). We then added an additional
393 sample as outgroup taxon to each subdataset. However, 18 sequences in 28S-b were too
394 different and we were not able to correctly align them with others. We thus removed them

1
2
3 395 (809 bp, 21 samples left) and put them aside in a new dataset, 28S-h (816 bp, 18 taxa).
4
5 396 Finally, the inferred tree shows eight groups (Fig. S2). Phylogenetic trees inferred from the
6
7 397 28S subdatasets are shown in Figure S3A–H.
8
9 398

10 399 SPECIES DELIMITATION ANALYSES

11 400
12 401 The ABGD and bPTP analyses delimited 89 and 92 PSHs, respectively, 78 of which were
13
14 402 recovered in both analyses. Figure 6 summarizes results from ABGD, bPTP and other criteria
15
16 403 used for species delimitation. Also shown in this figure are the numbers of shell morphotypes,
17
18 404 which were classified on the basis of global shell morphology, within each morphogroup
19
20 405 (MA–MH). We considered PSHs as separate species when they were reciprocally
21
22 406 monophyletic in a 28S subtree. Some pairs or triplets of PSHs (MG11–MG13; MD2 and
23
24 407 MD3; MA6 and MA7; MA11 and MA12; MC16 and MC17; MF3 and MF4; Fig. 6) shared
25
26 408 the same 28S sequence, and we conservatively considered such PSHs as a single species.
27
28 409 Similarly, if two allopatric PSHs were gathered in a same 28S clade we considered them as
29
30 410 geographic populations of single species (i.e. MG2–MG4; MG6–MG10; MD4 and MD5;
31
32 411 MB9 and MB10; Fig. 6A, B). Figure 6 further illustrates how we integrated the different lines
33
34 412 of evidence to make our decisions. Note that in all cases, our final decision was conservative,
35
36 413 i.e. if there was no clear evidence to choose between one single species or two different
37
38 414 species, we decided to choose the single species option. Examples include MC13, MC14 and
39
40 415 MC15 that lacked 28S data (Fig. 6C). By taking all lines of evidence into account, we inferred
41
42 416 60 SSHs (including one without *cox1* data but with 28S, morphological and geographic data).
43
44 417 Of these, we recorded 51 from the 187 stations sampled in the IWP. Morphological characters
45
46 418 of each SSH are shown in Table S2.

47 420 REGIONAL SPECIES DIVERSITY

48 421
49 422 We included the 187 IWP stations in our NMDS analysis. The stress value reached close to 0
50
51 423 (around 0.0007) after 200 NMDS runs, suggesting the presence of outlier stations. This result
52
53 424 was not surprising since some stations contained a single, unique species. For a better
54
55 425 recognition of underlying patterns, we removed 25 dissimilar stations that showed
56
57 426 NMDS1/NMDS2 over 20 or below -20. The re-analysis with 162 stations resulted in the final
58
59 427 stress value of 0.022. NMDS plots showed two main groups. One contained most stations in
60

1
2
3 428 the south-western Pacific and Indian Ocean, and part of the stations in the north-western
4 429 Pacific; the other contained many of the stations in the north-western Pacific and one station
5 430 in the south-western Pacific (Fig. 7).
6
7
8
9 431

10 432 PHYLOGENETIC RELATIONSHIPS AMONG SPECIES AND MORPHOGROUPS

11 433
12
13 434 The combined dataset of three genes (*cox1*, *H3* and *28S*) consisted of 1,421 aligned sites and
14 435 140 terminals, including 136 cocculinids, two bathysciadiids and two neomphaloids. The
15 436 topologies of the inferred ML and BI trees were similar to each other but with a noticeable
16 437 difference in the position of the clade MH (Figs S4, S5). The ML tree is shown in Figure 8
17 438 with reference to PSH names. The Cocculinidae consisted of ten major clades and a single
18 439 species (*Cocculina messingi*) that did not fall into any one of the major clades. The latter may
19 440 be due to the quantity of missing data. Seven out of the ten clades were strongly supported
20 441 with a bootstrap value (BS) of $\geq 80\%$ and posterior probability (PP) of ≥ 0.95 . Six of the
21 442 seven well-supported clades corresponded to the morphogroups MD, MH, MB, ME, MG and
22 443 MF. Conversely, the morphogroups MA and MC appeared to be non-monophyletic (Fig. 8).
23 444 Morphogroup MC consisted of two distantly related clades that were denoted as MCI and
24 445 MCII; the former was recovered as a sister clade to MB and the latter to MF. One species of
25 446 MA was distinct from others in the same morphogroup and instead sister to the clade ME.
26 447 However, this relationship was not supported with a significant BS value (73%) and we
27 448 cannot exclude that MA is monophyletic. Overall, relationships among the ten major clades
28 449 were not resolved expect the sister group relationships between MB and MCI (BS = 92%, PP
29 450 = 1.00), MF and MCII (86%, 1.00) and MG and MF + MCII (90%, 1.00) (Figs 8, S4, S5).
30
31
32
33
34
35
36
37
38
39
40
41
42
43
44

45 452 PROTOCONCH AND RADULA

46 453
47
48 454 To further diagnose the cocculinid clades we used two morphological characters: the
49 455 protoconch and radula. However, the protoconch of adult cocculinids are often eroded,
50 456 potentially due to high dissolution rates of calcium carbonate in the deep sea. Cocculinid
51 457 radulae are also known to be similar within a genus (e.g. Haszprunar, 1987; Marshall, [1985]
52 458 1986; McLean & Harasewych, 1995). Thus, we selected only 21 and 24 representative
53 459 specimens for the examination of the protoconch (Figs 9, 10) and radula (Fig. 11),
54
55
56
57 460 respectively.
58
59
60

1
2
3 461 Most protoconchs had a reticulated sculpture, whereas the individuals of clade MD
4
5 462 displayed a concentric sculpture in the initial part of shell formation (Fig. 10A–D). The radula
6
7 463 showed more variation between and within the clades (Fig. 8). Clade MA had two different
8
9 464 types of the rachidian tooth: “unicuspid broad” and “multicuspid broad” (Fig. 11A–D).
10
11 465 Among the species assigned to the polyphyletic morphogroup MC, those of clade MCI had
12
13 466 two types of “unicuspid broad” and “obsolete” (Fig. 11G–J), whereas two species from MCII
14
15 467 shared the same “acuspate-flat” rachidian (Fig. 11K, L). One species examined for clade ME
16
17 468 had the rachidian tooth of the “acuspate flat” (Fig. 11O). On the other hand, the clades MB,
18
19 469 MD, MF and MG were diagnosed by their “unicuspid narrow” (Fig. 11E, F), “multicuspid
20
21 470 narrow” (Fig. 11M, N), “acuspate-flat” (Fig. 11P–R) and “obsolete” (Fig. 11S–W) types of
22
23 471 the rachidian, respectively. Finally, the only specimen examined for the clade MH had a
24
25 472 rachidian tooth that can be classified into the “unicuspid broad” type (Fig. 11X). This
26
27 473 specimen was also unique in having unicuspid first lateral teeth; all other radulae examined
28
29 474 here had multiple cusps in the first lateral tooth.
30
31 475

32 DISCUSSION

33 SPECIES DIVERSITY IN THE INDO-WEST PACIFIC

34 479
35
36 480 The integrative taxonomy as implemented in this study revealed a remarkable species richness
37
38 481 of cocculinids with 51 delimited species occurring in the IWP. However, only 29 extant
39
40 482 species have been described from the IWP and specimens examined in previous studies
41
42 483 originated from a few restricted areas. These include five *Coccopigya* and one *Paracocculina*
43
44 484 species around New Zealand and off the east coast of Australia (Fleming, 1948; Marshall,
45
46 485 [1985] 1986), six *Cocculina* and two *Coccopigya* species around Japan (Kuroda & Habe,
47
48 486 1949; Hasegawa, 1997, 2009; Zhang & Zhang, 2018), one *Cocculina* species around the
49
50 487 Philippines (Watson, 1886), one *Cococrater*, eight *Cocculina*, one *Paracocculina* species
51
52 488 around Indonesia (Thiele, 1903; Schepman, 1908) and five *Cocculina* species off West Africa
53
54 489 (Thiele, 1925). Our specimens were collected mainly in the vicinity of Papua New Guinea,
55
56 490 the Solomon Islands, New Caledonia and Vanuatu, but also from around Madagascar, in the
57
58 491 South China Sea, near Taiwan, the East China Sea and Japan. There is thus a relatively small
59
60 492 overlap between our sampling areas and the known distribution ranges of the described
493 cocculinid species. This suggests that many, if not most, of the species we delimited in this

1
2
3
4 494 study are new to science as discussed below.

5 495 Based on our sampling, 21 inferred species seemed to have limited, regional distributions
6
7 496 (see Figure 1 for 11 geographic regions defined in this study). Some other species showed
8
9 497 wider ranges, but they generally occurred only in adjacent regions. Only a few had wide
10
11 498 ranges. For instance, *Coccapigya* sp. 3 ranged from Madagascar (MAD) in the West Indian
12
13 499 Ocean to Taiwan (TW), the Philippines (PHI) and Solomon Sea (SOL) in the West Pacific;
14
15 500 nGen4 sp. 2 was collected from the Mozambique Channel (AFR) and the Bismarck Sea (BIS).
16
17 501 *Cococrater* sp. 7 is distributed in the East China Sea, Philippine waters, Bismarck Sea,
18
19 502 Solomon Sea and Vanuatu waters. We found *Paracocculina subcompressa* in Philippine
20
21 503 waters, Bismarck Sea, Solomon Sea, Vanuatu and New Caledonian waters (Fig. 6C). This
22
23 504 pattern of limited geographic range for most of the identified species is cohesive with the
24
25 505 lecithotrophic larvae and the low instantaneous fecundity (less than 40 oocytes) in the life
26
27 506 history (Young *et al.*, 2013). Indeed, low connectivity among populations are more frequently
28
29 507 observed in deep-sea species with lecithotrophic or non-planktotrophic larvae (e.g. Plouviez *et*
30
31 508 *al.*, 2009; Coykendall *et al.*, 2011; Young *et al.*, 2012; Chen *et al.*, 2015) than for those with
32
33 509 planktotrophic larvae (e.g. Castelin *et al.*, 2012; Arellano *et al.*, 2014; Zaharias *et al.*, 2020).
34
35 510 However, for such poorly dispersive organisms, interpretation should be made with caution as
36
37 511 the sampling bias may also explain the apparent endemism (Castelin *et al.*, 2012).

38 512 Regional endemism was observed for most of the IWP cocculinid species we identified.
39
40 513 This general trend contrasts with the case of nGen4 sp2 that gathered specimens collected in
41
42 514 two distant regions: the Mozambique Channel and the Bismarck Sea (Fig. 6B). The genetic
43
44 515 divergence between the samples from these regions was low (i.e. *cox1* distance = 0.64%)
45
46 516 despite a geographic distance of more than 5000 km between them. Strikingly, we collected
47
48 517 this species always on chondrichthyan egg cases and sister to nGen4 sp1 that was collected
49
50 518 exclusively on the skeleton of deep-sea corals. We should stress that plant remains are highly
51
52 519 abundant around tropical islands, and these were thus well represented in the catches available
53
54 520 in the MNHN's collection. Animal remains seem to be much more unevenly distributed on
55
56 521 the deep-sea floor and were much rarer in our samples. The two species were never present in
57
58 522 the abundant wood material and we can therefore regard them as truly specialized to either
59
60 523 egg cases or coral skeletons. Their robust sister relationship (Figs 6B, 8) and vast geographic
524
525 524 range of nGen4 sp1 suggest that habitat shift from the plesiomorphic wood to other biogenic
526
527 525 substrates has been uncommon in the evolutionary history of the Cocculinidae. We found few
528
529 526 specimens of *Coccapigya hispida* from the specimens collected during the experimentally

1
2
3 527 deployed leaves and bones in New Caledonia (MG13, Fig. 6A; Samadi *et al.*, 2010), but those
4
5 528 cases might represent rare, opportunistic use of substrates by an essentially wood-dwelling
6
7 529 species. Additional efforts for sampling species associated to animal remains are still required
8
9 530 to better understand the ecological radiation of cocculinid limpets.

10 531 At the community scale, the sampling stations were divided into two main groups based
11
12 532 on cocculinid species composition: one included most stations in the Indian Ocean and south-
13
14 533 west Pacific and some stations in the north-west Pacific; the other one contained stations
15
16 534 mostly from the north-west Pacific, but also one in the south-west Pacific (experimentally
17
18 535 deployed organic materials; Samadi *et al.*, 2010) (Fig. 7). Actually, we found only 13 out of
19
20 536 the 51 cocculinid species in both the north-west and south-west Pacific. Physical factors such
21
22 537 as ocean currents might play an important role in shaping the community pattern of deep-sea
23
24 538 animals (McClain & Hardy, 2010). Deep-sea planktotrophic larvae often migrate from the
25
26 539 deep seabed to the photic layer and are then transported across thousands of kilometres across
27
28 540 large geographic areas via surface currents like the Equatorial and Kuroshio Currents (e.g.
29
30 541 Arellano *et al.*, 2014; Hilário *et al.*, 2015; Yahagi *et al.*, 2017, 2019, 2020). Conversely, most
31
32 542 lecithotrophic developers such as cocculinids are probably transported by bottom currents.
33
34 543 Although bottom currents generally move slowly across ocean floors (Stow *et al.*, 2002), such
35
36 544 currents in the Southern Hemisphere may play an important role to transport lecithotrophic
37
38 545 larvae of cocculinid species crossing the oceans. This might explain the homogeneous species
39
40 546 composition and wide-ranging distributions of some species in the Indian and south-west
41
42 547 Pacific Oceans (Figs 6, 7).

43 548

44 549 CLASSIFICATION OF COCCULINID GENERA

45 550

46 551 We here provide the first DNA-based phylogeny of Cocculinidae, where ten major clades or
47
48 552 lineages are recognized (Fig. 8). Among the ten clades five contain the type species of a
49
50 553 named genus, or a species similar to the type, and can therefore be attributed to the following
51
52 554 generic names: *Cococrater* (MA), *Coccopigya* (MG), *Cocculina* (MCI), *Fedikovella* (MD)
53
54 555 and *Paracocculina* (MF). The clades ME and MH each constitutes an unnamed genus without
55
56 556 doubt. The clades MB, MCII and MA1 as independent genera are also plausible, but less
57
58 557 certain, partly due to insufficient support values of the tree topology (Fig. 8). We propose the
59
60 558 following generic classification for the IWP cocculinids based on the phylogenetic
60 559 reconstruction and morphological examination in this study (Table 2). These putative new

560 genera and relevant species will be named and described in a subsequent study that notably
561 requires examining the type specimens of all valid names of cocculinids.

562

563 *Cocculina*

564 The species in the genus *Cocculina* as traditionally defined can be diagnosed from other
565 cocculinids by having a copulatory organ originated from the oral lappet (Marshall, [1985]
566 1986; Haszprunar, 1987; McLean & Harasewych, 1995; Strong *et al.*, 2003). This particular
567 condition was observed in the specimens of morphogroups MB (9 species), MCI (5 species)
568 and MCII (8 species). However, we consider that MCI alone represents *Cocculina* s.s. with
569 specimens identified as the type species *C. rathbuni* (MC12, collected in the waters off
570 Guadeloupe, French Caribbean, at depths of 600–900 m) in this clade (Fig. 8).

571 Morphogroup MB, recovered as the sister clade to MCI (*Cocculina* s.s.), mostly shows a
572 unique, spindle shape of the shell and a teleoconch sculpture with plainly raised radial ribs
573 (Table 1; Fig. 3C). These conditions are found in two described species, *Cocculina emsoni*
574 McLean & Harasewych, 1995 from around the Bahamas and *Cocculina angulata* Watson,
575 1886 from the Philippines. However, our MB specimens collected from Caribbean Sea (MB3)
576 have a narrow, oval shell shape compared to *C. emsoni* and MB specimens from IWP. Our
577 MB specimens and *C. emsoni* further share the loose reticulate sculpture of the protoconchs
578 (Fig. 10D) and narrow-shaped rachidian of the radula (Fig. 11E, F; McLean & Harasewych,
579 1995). *Cocculina angulata*, known only from the shell (Watson, 1886), also agrees with
580 conditions in many MB specimens, but we cannot robustly identify it with any one of our
581 species, including MB8 from the Philippines. We consider that the monophyletic nature and
582 morphological uniqueness may warrant a new genus (nGen3) for this group, but its
583 relationship with MCI (*Cocculina* s.s.) remains to be solved (Figs 6B, 10).

584 Although MCII is phylogenetically distant from MCI, their specimens are similar to each
585 other in external morphology. However, the two groups have different rachidian teeth of the
586 radula. The specimens of MCII have an “acuspate-flat” type (Fig. 11K, L) similar to those in
587 its sister clade MF (Fig. 11P–R). On the contrary, the rachidians in MCI and its sister lineage
588 MB are of different types: the former being “acuspate-flat,” “unicuspid broad” or “obsolete”
589 (Fig. 11G–J), while the latter are “unicuspid narrow” (Fig. 11E, F). However, we examined
590 only two radulae from MCII and more data are needed to confirm these as diagnostic traits of
591 different genera. Regarding the bathymetric distribution, the specimens of MCI were sampled
592 at shallower depths (50–365 m deep) than those of MCII (105–900 m) and MB (170–1250 m)

1
2
3 593 (Fig. 6). This might further support the taxonomic uniqueness of the clade MCII as another
4 594 new genus (nGen1). The previous morphology based cocculinid phylogeny by Strong *et al.*
5 595 (2003) did not detect this putative genus within *Cocculina* probably as a result of the
6 596 geographic sampling centred in the Atlantic Ocean.

7 597 The phylogenetic positions of *Cocculina messingi* and *C. enigmadonta* Chen & Linse,
8 598 2020 are both unresolved. The former was grouped with the clade MA1 + ME without
9 599 support (Fig. 8); the latter was sister to *C. messingi* in the *cox1*-based ML tree, but again
10 600 without support (Fig. 6C). As we only get *Cox1* sequences for these two species, these
11 601 affinities are uncertain. The type specimen of *C. messingi* was collected around the Bahamas
12 602 at 412 m deep. Its copulatory organ originated from the right oral lappet conforms to the
13 603 diagnosis of *Cocculina s.l.*, but its teleoconch with raised concentric growth lines and fine
14 604 radial striae (McLean & Harasewych, 1995: fig. 12) is similar to the concentric sculpture we
15 605 classified (Fig. 3D), which can only be observed in nGen4 sp4 (Table S2). *Cocculina*
16 606 *enigmadonta* is the only cocculinid species found so far in the Southern Ocean, and also the
17 607 only one from the hydrothermal vent environment (Chen & Linse, 2020). It has a unique type
18 608 of the radula and a copulatory organ similar to that of *Paracocculina* (Chen & Linse, 2020:
19 609 fig. 5C). We thus leave *C. messingi* and *C. enigmadonta* in *Cocculina s.l.*, waiting for more
20 610 data for future reclassification.

21 611 Among other IWP species described under this genus, *Cocculina japonica* Dall, 1907
22 612 was easily recognized in our material and fell into *Cocculina s.s.* (MCI) in the present study.
23 613 The information available in the species descriptions of *C. capulus* Thiele, 1925, *C. dofleini*
24 614 Thiele, 1925, *C. fragilis* Thiele, 1925, *C. pellita* Thiele, 1925, *C. similis* Thiele, 1925 and *C.*
25 615 *vestita* Thiele, 1925, did not allow us to confidently attribute them to our SSHs or to the
26 616 clades identified here. Seven species names proposed by Schepman (1908) for Indonesian
27 617 material were also difficult to link to our specimens, because the original descriptions were
28 618 based mainly on the shell and little on radular morphology. *Cocculina ovata* Schepman, 1908
29 619 might be an exception. McLean (1987) attributed numerous specimens collected at 187–210
30 620 m deep in the Philippines to this species. Among our SSHs from similar depths of
31 621 neighbouring areas, the one made up of MC19 (Fig. 6C) showed the conchological features of
32 622 *C. ovata* redescribed by McLean (1987), perhaps suggesting its identity at the species level.
33 623 The shape of rachidian tooth of MC18 (Fig. 11I) did not exactly match the condition
34 624 described for *C. ovata* by Schepman (1908) and McLean (1987). However, this inconsistency

1
2
3 625 might have resulted from worn teeth or different angles in SEM shots and examination of
4 626 more radulae is needed to confirm our species identification.

5
6
7 627 Five more species have been described from the IWP under the genus *Cocculina*: *C.*
8 628 *pacifica* Kuroda & Habe, 1949, *C. tosaensis* Kuroda & Habe, 1949, *C. surugaensis*
9
10 629 Hasegawa, 1997 and *C. tenuitesta* Hasegawa, 1997, all on sunken wood off Japanese coasts,
11
12 630 and *C. delphinicola* Zhang & Zhang, 2018 from a dolphin skull at a depth of 300–400 m in
13
14 631 the East China Sea (Zhang & Zhang, 2018). Although none of them were found in our
15
16 632 material, we believe that the first species should be moved from the genus to either
17
18 633 *Fedikovella* (“*C.*” *pacifica*; see below) or Lepetellidae (“*C.*” *tosaensis*; see Hasegawa, 1997:
19 634 65). The sequences we gathered from GenBank similarly illustrated the difficulty of the
20
21 635 morphological identification at both genus and species levels. Examples include published
22
23 636 sequences attributed to *Coccopigya punctoradiata* (Table S1) that were clustered with an
24
25 637 entirely different species (MC5) in a potential new genus (nGen1).

26 638
27
28 639 *Coccopigya*

29 640 *Coccopigya* is the most easily recognized genus in Cocculinidae. It is distinguished from
30
31 641 other cocculinids by having periostracal spines and by lacking epipodial tentacles (Marshall,
32
33 642 [1985] 1986; Haszprunar, 1987). All specimens attributed to MG, corresponding to nine
34
35 643 distinct species (Fig. 6A), displayed both conditions and were thus considered as the members
36
37 644 of *Coccopigya* (Tables 1, 2).

38 645 Specimens of MG2–MG4 and MG15 were identified respectively as *Coccopigya*
39
40 646 *punctoradiata* (Kuroda & Habe, 1949) and *Coccopigya okutanii* Hasegawa, 1997 based on
41
42 647 their morphology and collection sites (Japan). The specimens of MG11–MG13, gathered into
43
44 648 a single SSH, were attributed to *Coccopigya hispida* based on a published *cox1* sequence from
45
46 649 a paratype of the species (AY296823, voucher NMNZ M075188) (Fig. 6A).

47 650
48
49 651 *Cococrater*

50 652 The use of the right cephalic tentacle as a copulatory organ is considered plesiomorphic
51
52 653 within the Cocculinoidea and shared by the species of *Cococrater*, *Coccopigya*, *Fedikovella*,
53
54 654 *Macleaniella* and *Teuthirostria* (Table 2; Strong *et al.*, 2003). This condition was observed in
55
56 655 morphogroups MA, MD, MG and MH (Table 1; Fig. 6). Of these, MD and MG were
57
58 656 attributed to *Fedikovella* and *Coccopigya*, respectively, and MH to an undescribed genus with
59
60 657 ecological uniqueness (see below). The morphological and ecological features of

1
2
3
4 658 *Macleaniella* and *Teuthirostria* do not match any of our specimens (see section *Macleaniella*
5 659 and *Teuthirostria*). We thus consider morphogroup MA as *Cococrater*.

6
7 660 The occurrence of *Cococrater* in the IWP region, including the type species *C. radiatus*
8 661 (with a type locality off western Sumatra), suggests a generic identity for one or both of the
9 662 two MA lineages. As we cannot exclude that MA is monophyletic (see above) and the
10 663 original description of *C. radiatus* by Thiele (1903) was too simple to be linked to any of our
11 664 SSHs, both lineages are assigned here to *Cococrater* with a possibility of establishing a new
12 665 genus in future pending more data on their relationships and the type specimen of *C. radiatus*.

13
14
15
16
17 666

18 667 *Fedikovella*

19
20 668 The genus *Fedikovella* contains two described species. The type species *Fedikovella*
21 669 *caymanensis* Moskalev, 1976 was described from a hadal depth (6800 m) in the Cayman
22 670 Trough. *Fedikovella beanii* (Dall, 1882) was described from the north-western part of the
23 671 Atlantic (lectotype USNM 333751 from 613 m deep, off Martha's Vineyard Island,
24 672 Massachusetts) and has been collected from the Lesser Antilles and Martinique at around 400
25 673 m to 1000 m deep (McLean & Harasewych, 1995). The concentric sculpture of the
26 674 protoconch and reticulate ribs of the teleoconch are diagnostic characters of the genus
27 675 (Moskalev, 1976; Marshall, [1985] 1986; McLean & Harasewych, 1995; Leal & Harasewych,
28 676 1999). The right cephalic tentacle of *F. caymanensis* is supposedly used as a copulatory organ
29 677 but not hypertrophied or modified (Leal & Harasewych, 1999). The rachidian, first and
30 678 second lateral teeth are all multicuspidid (Leal & Harasewych, 1999). These conditions were
31 679 found in our specimens of the clade MD (Tables 1, 2; Figs 10A–D, 11M, N).

32
33 680 An additional MD specimen from the Lesser Antilles at 500–550 m deep (MNHN-IM-
34 681 2013-60187; Table S1) was grouped with the IWP specimens in the 28S analysis (Fig. S2),
35 682 supporting the identity of this clade as *Fedikovella* from a geographic perspective. This clade
36 683 also included species from off Faro, Portugal (M-unknown1, AORI_YK1662) and from off
37 684 Costa Rica, east Pacific (M-unknown2, SMNH-108733) (Fig. 8). “*Cocculina*” *pacifica*
38 685 described from off Japan should likewise be attributed to *Fedikovella* based on its shell,
39 686 radula and copulatory organ (Kuroda & Habe, 1949: pl. 3, fig. 5; Hasegawa, 1997: fig. 5).
40 687 *Fedikovella* thus occupies a wide range, both geographically (worldwide) and bathymetrically
41 688 (bathyal to hadal zones). We should stress that Strong *et al.* (2003) found *Fedikovella* +
42 689 *Teuthirostria* as sister to the rest of the cocculinids, but this sister group relationship

690 (*Fedikovella* versus all other examined cocculinids, as we did not include *Teuthirostria* in the
691 analysis) is only weakly supported in the molecular tree we obtained.

692

693 *Paracocculina*

694 *Paracocculina* contains two named species: the type species *P. laevis* collected from off
695 west of Sumatra Island at 614 m deep (Thiele, 1903) and *P. cervae* from New Zealand in a
696 depth range of 18–891 m (Marshall, [1985] 1986; Haszprunar, 1987). Marshall (1994)
697 recorded *P. cervae* from wood, whale bones and sunken algal holdfasts. This genus can be
698 differentiated from other cocculinids by their foot-originated copulatory organ (Haszprunar,
699 1987; but see Strong *et al.*, 2003: 122), a condition observed in all our specimens attributed to
700 the clade MF (Fig. 4B; Tables 1, S2). The MF specimens were collected from a wide
701 geographic area, ranging from the western Indian Ocean (Madagascar) to the western Pacific
702 (New Caledonia). Although we did not survey west off Sumatra with the type locality of *P.*
703 *laevis*, the identity of the clade MF as *Paracocculina* seems to be well justified with the
704 unique position of the copulatory organ.

705 Among GenBank data the sequence GQ160744 (Table S1; MNHN-IM-2009-5054 from
706 the Solomon Sea) was grouped with MF9 (Fig. S1). This GenBank sequence has been
707 attributed to “*Cocculina*” *subcompressa*, a species described from south-west of Timor Island
708 (216 m; Schepman, 1908). The widespread distribution of MF7–MF9, ranging from the
709 Philippines to New Caledonia, and from 350 m to 1000 m deep (Fig. 6C), may potentially
710 justify the species identification (as *Paracocculina subcompressa*). Unfortunately, Schepman
711 (1908) did not mention the position of the copulatory organ in the type material and our
712 identification thus remains tentative.

713

714 Clades ME and MH

715 Clade ME contained three species from the Bismarck Sea, the Solomon Sea and Vanuatu
716 (Fig. 6A). These species displayed a remarkably unique position of a presumed copulatory
717 organ on the right mantle margin close to the head (Table 1; Fig. 4D). No-one has yet reported
718 this type of copulatory organ for any cocculinids. Further examination of the anatomy and the
719 histology is thus mandatory. The phylogenetic position (Fig. 8) combined with the
720 morphology suggests to treat this clade as a new genus (nGen2) awaiting formal description.

721 Clade MH contained specimens from “non-wooden” habitats. The specimens of MH1
722 were found on nodes of deep-sea bamboo corals (Isididae), which are formed by a specific

1
2
3
4
5
6
7
8
9
10
11
12
13
14
15
16
17
18
19
20
21
22
23
24
25
26
27
28
29
30
31
32
33
34
35
36
37
38
39
40
41
42
43
44
45
46
47
48
49
50
51
52
53
54
55
56
57
58
59
60

1
2
3 723 protein matrix (Ehrlich *et al.*, 2006), whereas MH2 were on the egg cases of chondrichthyes
4 724 (sharks and/or rays). We consider that such unique habitats and independent phylogenetic
5 725 position they occupy (Fig. 8) justify erection of another new genus (nGen4).
6
7
8
9

726

727 *Macleaniella* and *Teuthirostria*

10
11
12 728 These cocculinid genera were established for species from abyssal or hadal depths
13 729 (Moskalev, 1976; Leal & Harasewych, 1999). *Macleaniella moskalevi* is the monotypic
14 730 species of the genus, known exclusively from the lower abyssal and hadal zones of the Puerto
15 731 Rico Trench (5179–8595 m). It is easily recognized by its large internal septum of the shell as
16 732 a unique character within Cocculinidae (Leal & Harasewych, 1999). *Teuthirostria cancellata*
17 733 Moskalev, 1976, also the type and only species of the genus, was collected from a dead
18 734 cephalopod beak on 5200–5540 m bottom off northern Peru (Moskalev, 1976). This species
19 735 was recovered as a sister group to *Fedikovella* by morphology (Strong *et al.*, 2003). We did
20 736 not find any IWP specimen that was comparable in morphological or ecological
21 737 characteristics, suggesting that the two genera are endemic to the Atlantic (*Macleaniella*) or
22 738 the East Pacific (*Teuthirostria*), or that they are restricted to the lower abyssal and hadal
23 739 zones.
24
25
26
27
28
29
30
31
32
33

740

741

CONCLUSIONS

742

34
35
36
37 743 Our study based on broadly sampled material, constitute so far, the most comprehensive
38 744 biodiversity survey on cocculinid limpets. We identified 51 species from organic falls on the
39 745 deep-sea floor in the Indo-West Pacific. These included six named species (*Coccopigya*
40 746 *punctoradiata*, *Coccopigya hispida*, *Coccopigya okutanii*, *Cocculina japonica*, *Cocculina*
41 747 *ovata* and *Paracocculina subcompressa*) and 45 other, presumably new, species of the family.
42 748 We inferred the phylogenetic relationships among cocculinids for the first time based on a
43 749 multigene dataset. We recognized five named and four unnamed genera: *Cocculina* (8
44 750 species), *Cococrater* (7), *Coccopigya* (9), *Fedikovella* (5), *Paracocculina* (6), new genus 1
45 751 (nGen1: 8), nGen2 (3), nGen3 (8) and nGen4 (2); diagnostic morphological and ecological
46 752 traits are summarized for all genera in Table 2. These numbers of genera and species are
47 753 much higher than previously recognized in the Indo-West Pacific, although a larger part of the
48 754 oceans of the world remains to be sampled. We thus estimate that additional sampling efforts
49 755 will reveal more taxa, especially given the inherent patchiness of their habitats. Drawing a full
50 756 picture of the diversity of this perplexing animal group requires further research into other

1
2
3 757 oceans and habitats.
4
5 758

6
7 759 DATA AVAILABILITY
8
9 760

10 761 The data underlying this article are available in the article and its online supplementary
11 762 material, and in the GenBank Nucleotide Database at <https://www.ncbi.nlm.nih.gov/genbank/>
12 763 and can be accessed with the GenBank accession numbers OL800712–OL801212 and
13 764 OL956554–OL956700.
14
15
16
17 765

18
19 766 ACKNOWLEDGEMENTS
20
21 767

22 768 We thank all PIs and participants of the “*Tropical Deep-Sea Benthos*” expeditions AURORA
23 769 2007, BIOPAPUA, BOA1, CONCALIS, DONGSHA 2014, EBISCO, EXBODI, KAVALAN
24 770 2018, KAVIENG 2014, MADEEP, MAINBAZA, KARUBENTHOS 2, MIRIKY, NANHAI
25 771 2014, NORFOLK 2, PANGLAO 2004, PANGLAO 2005, PAPUA NIUGINI, SALOMON 2,
26 772 SALOMONBOA 3 and TAIWAN 2013 conducted by MNHN and IRD, but also NTU and
27 773 NTOU for Taiwanese expeditions. Additional to MNHN, IRD, NTU and NTOU supports,
28 774 some of these expeditions were conducted with financial supports notably from Flotte
29 775 Océanographique Française (DOI numbers: 10.17600/15005400, 10.17600/10100040,
30 776 10.17600/5100060, 10.17600/8100010, 0.17600/5100080, 10.17600/11100080,
31 777 10.17600/14004400, 10.17600/14004000, 10.17600/3100030, 10.17600/18000841,
32 778 10.17600/4100090, 10.17600/7100070), INEE-CNRS and Labex BCDiv (ANR-10-LABX-
33 779 0003-BCDiv). We thank B. Buge for the curation of specimens; J. Abdelkrim, A. Dettai and
34 780 all staff from the Service de Systématique Moléculaire (SSM-UMS2700) for their help in
35 781 managing and analysing molecular data; L. Genio and M. Cunha, University of Aveiro, for a
36 782 specimen from the expedition James Cook 10 during the EU Hermes Project; A. Warén, P.
37 783 Bouchet, V. Héros, P. Lozouet, P. Maestrati, L. Galindo, M. Caballer for discussion and
38 784 collection management; S. Pont, P. Maestrati and L. Corbari for SEM shots. This research
39 785 was mainly supported by research funding from the Ministry of Science and Technology,
40 786 Taiwan (MOST 102- 2923-B-002-001-MY3, MOST 107-2611-M-002-007-, MOST 108-
41 787 2611-M-002-012-MY2 and MOST 110-2611-M-002-013- to W-J Chen), the French National
42 788 Research Agency (ANR 12-ISV7-0005-01 to S Samadi) and Japan Society for the Promotion
43 789 of Science (KAKENHI 18H02494 and 19KK0385 to Y Kano).
44
45
46
47
48
49
50
51
52
53
54
55 790

56
57 791 REFERENCES
58
59 792
60

- 1
2
3
4 793 **Amon DJ, Copley JT, Dahlgren TG, Horton T, Kemp KM, Rogers AD, Glover AG.**
5 794 **2017.** Observations of fauna attending wood and bone deployments from two
6
7 795 seamounts on the southwest Indian Ridge. *Deep Sea Research Part II: Topical Studies*
8
9 796 *in Oceanography* **136**: 122–132.
- 10 797 **Ardila NE, Harasewych MG. 2005.** Cocculinid and pseudococculinid limpets (Gastropoda:
11
12 798 Cocculiniformia) from off the Caribbean coast of Colombia. *Proceedings of the*
13
14 799 *Biological Society of Washington* **118**: 344–366.
- 15 800 **Arellano SM, Van Gaest AL, Johnson SB, Vrijenhoek RC, Young CM. 2014.** Larvae
16
17 801 from deep-sea methane seeps disperse in surface waters. *Proceedings of the Royal*
18
19 802 *Society B: Biological Sciences* **281**: 20133276.
- 20 803 **Bouchet P, Héros V, Lozouet P, Maestrati P. 2008.** A quarter-century of deep-sea
21
22 804 malacological exploration in the south and west Pacific: where do we stand? How
23
24 805 far to go? In: Héros V, Cowie RH, Bouchet P, eds. *Tropical deep-sea benthos* 25.
25
26 806 Paris: Mémoires du Muséum national d'Histoire naturelle, 9–40.
- 27 807 **Bouchet P, Rocroi J-P, Hausdorf B, Kaim A, Kano Y, Nützel A, Parkhaev P, Schrödl M,**
28
29 808 **Strong EE. 2017.** Revised classification, nomenclator and typification of gastropod
30
31 809 and monoplacophoran families. *Malacologia* **61**: 1–526.
- 32 810 **Castelin M, Lorion J, Brisset J, Cruaud C, Maestrati P, Utge J, Samadi S. 2012.**
33
34 811 Speciation patterns in gastropods with long-lived larvae from deep-sea seamounts.
35
36 812 *Molecular Ecology* **21**: 4828–4853.
- 37 813 **Chen C, Linse K. 2020.** From wood to vent: first cocculinid limpet associated with
38
39 814 hydrothermal activity discovered in the Weddell Sea. *Antarctic Science* **32**: 354–366.
- 40 815 **Chen C, Copley JT, Linse K, Rogers AD. 2015.** Low connectivity between 'scaly-foot
41
42 816 gastropod' (Mollusca: Peltospiridae) populations at hydrothermal vents on the
43
44 817 southwest Indian Ridge and the central Indian Ridge. *Organisms Diversity &*
45
46 818 *Evolution* **15**: 663–670.
- 47 819 **Chisholm LA, Morgan JAT, Adlard RD, Whittington ID. 2001.** Phylogenetic analysis of
48
49 820 the Monocotylidae (Monogenea) inferred from 28S rDNA sequences. *International*
50
51 821 *Journal for Parasitology* **31**: 1537–1547.
- 52 822 **Colgan DJ, McLauchlan A, Wilson GDF, Livingston SP, Edgecombe GD, Macaranas J,**
53
54 823 **Cassis G, Gray MR. 1998.** Histone H3 and U2 snRNA DNA sequences and
55
56 824 arthropod molecular evolution. *Australian Journal of Zoology* **46**: 419–437.
- 57 825 **Costello MJ, Coll M, Danovaro R, Halpin P, Ojaveer H, Miloslavich P. 2010.** A census of
58
59 826 marine biodiversity knowledge, resources, and future challenges. *PloS One* **5**: e12110.

- 1
2
3 827 **Coykendall DK, Johnson SB, Karl SA, Lutz RA, Vrijenhoek RC. 2011.** Genetic diversity
4 828 and demographic instability in *Riftia pachyptila* tubeworms from eastern Pacific
5 829 hydrothermal vents. *BMC Evolutionary Biology* **11**: 96.
- 8 830 **Cunha MR, Matos FL, Génio L, Hilário A, Moura CJ, Ravara A, Rodrigues CF. 2013.**
9 831 Are organic falls bridging reduced environments in the deep sea? – Results from
10 832 colonization experiments in the Gulf of Cádiz. *PLoS One* **8**: e76688.
- 13 833 **Dall WH. 1882.** On certain limpets and chitons from the deep waters off the eastern coast of
14 834 the United States. *Proceedings of the United States National Museum* **4**: 400–414.
- 17 835 **Dautzenberg P, Fischer H. 1900.** Description d'un mollusque nouveau. *Bulletin de la*
18 836 *Société Zoologique de France* **24**: 207–209.
- 20 837 **Distel DL, Baco AR, Chuang E, Morrill W, Cavanaugh C, Smith CR. 2000.** Do mussels
21 838 take wooden steps to deep-sea vents? *Nature* **403**: 725–726.
- 24 839 **Danovaro R, Fanelli E, Canals M, Ciuffardi T, Fabri MC, Taviani M, Argyrou M,**
25 840 **Azzurro E, Bianchelli S, Cantafaro A, Carugati L, Corinaldesi C, De Haan WP,**
26 841 **Dell'Anno A, Evans J, Foglini F, Galil B, Gianni M, Goren M, Grecob S, Grimalt**
27 842 **J, Güell-Bujons Q, Jadaud A, Knittweis L, Lopez JL, Sanchez-Vidal A,**
28 843 **Schembrij PJ, Snelgrove P, Vaz S, the IDEM Consortium, Angeletti L, Barsanti**
29 844 **M, Borg JA, Bosso M, Brind'Amour A, Castellan G, Conte F, Delbono I, Galgani**
30 845 **F, Morgana G, Prato S, Schirone A, Soldevila E. 2020.** Towards a marine strategy
31 846 for the deep Mediterranean Sea: Analysis of current ecological status. *Marine Policy*
32 847 **112**: 103781.
- 37 848 **Ehrlich H, Etnoyer P, Litvinov SD, Olennikova MM, Domaschke H, Hanke T, Born R,**
38 849 **Meissner H, Worch H. 2006.** Biomaterial structure in deep-sea bamboo coral
39 850 (Anthozoa: Gorgonacea: Isididae): perspectives for the development of bone implants
40 851 and templates for tissue engineering. *Materialwissenschaft und Werkstofftechnik* **37**:
41 852 552–557.
- 46 853 **Felsenstein J. 1985.** Confidence-limits on phylogenies – an approach using the bootstrap.
47 854 *Evolution* **39**: 783–791.
- 49 855 **Fleming CA. 1948.** New species and genera of marine Mollusca from the Southland fiords.
50 856 *Transactions and Proceedings of the Royal Society of New Zealand* **77**: 72–92.
- 53 857 **Folmer O, Black M, Hoeh W, Lutz R, Vrijenhoek R. 1994.** DNA primers for amplification
54 858 of mitochondrial cytochrome c oxidase subunit I from diverse metazoan invertebrates.
55 859 *Molecular Marine Biology and Biotechnology* **3**: 294–299.
- 58 860 **Fujiwara Y, Kawato M, Noda C, Kinoshita G, Yamanaka T, Fujita Y, Uematsu K,**
59 861 **Miyazaki J-I. 2010.** Extracellular and mixotrophic symbiosis in the whale-fall mussel

- 1
2
3 862 *Adipicola pacifica*: a trend in evolution from extra- to intracellular symbiosis. *PLoS*
4 863 *One* **5**: e11808.
- 5
6
7 864 **Harbour RP, Smith CR, Simon-Nutbrown C, Cecchetto M, Young E, Coral C,**
8 865 **Sweetman AK. 2021.** Biodiversity, community structure and ecosystem function on
9 866 kelp and wood falls in the Norwegian deep sea. *Marine Ecology Progress Series* **657**:
10 867 73–91.
- 11
12
13 868 **Hasegawa K. 1997.** Sunken wood-associated gastropods collected from Suruga Bay, Pacific
14 869 side of the central Honshu, Japan, with descriptions of 12 new species. *National*
15 870 *Science Museum Monographs* **12**: 59–123.
- 16
17
18 871 **Hasegawa K. 2009.** Upper bathyal gastropods of the Pacific coast of northern Honshu, Japan,
19 872 chiefly collected by R/V *Wakataka-maru*. In: Fujita T, ed. *Deep-sea fauna and*
20 873 *pollutants off Pacific coast of northern Japan*. Tokyo: National Museum of Nature and
21 874 Science Monographs **39**: 225–383.
- 22
23
24 875 **Haszprunar G. 1987.** Anatomy and affinities of cocculinid limpets (Mollusca,
25 876 Archaeogastropoda). *Zoologica Scripta* **16**: 305–324.
- 26
27
28 877 **Hinsinger DD, Debruyne R, Thomas M, Denys GPJ, Mennesson M, Utge J, Dettai A.**
29 878 **2015.** Fishing for barcodes in the Torrent: from COI to complete mitogenomes on
30 879 NGS platforms. *DNA Barcodes* **3**: 170–186.
- 31
32
33 880 **Hilário A, Metaxas A, Gaudron SM, Howell KL, Mercier A, Mestre NC, Ross RE,**
34 881 **Thurnherr AM, Young C. 2015.** Estimating dispersal distance in the deep sea:
35 882 challenges and applications to marine reserves. *Frontiers in Marine Science* **2**: 6.
- 36
37
38 883 **Horsáková V, Nekola JC, Horsák M. 2020.** Integrative taxonomic consideration of the
39 884 Holarctic *Euconulus fulvus* group of land snails (Gastropoda, Stylommatophora).
40 885 *Systematics and Biodiversity* **18**: 142–160.
- 41
42
43 886 **Katoh K, Standley DM. 2013.** MAFFT multiple sequence alignment software version 7:
44 887 improvements in performance and usability. *Molecular Biology and Evolution* **30**:
45 888 772–780.
- 46
47
48 889 **Kiel S, Goedert JL. 2006.** A wood-fall association from late Eocene deep-water sediments of
49 890 Washington State, USA. *Palaios* **21**: 548–556.
- 50
51
52 891 **Kimura M. 1980.** A simple method for estimating evolutionary rates of base substitutions
53 892 through comparative studies of nucleotide sequences. *Journal of Molecular Evolution*
54 893 **16**: 111–120.
- 55
56
57 894 **Kuroda T, Habe T. 1949.** On the gastropod genus *Cocculina* from Japan. *Venus (Japan*
- 58
59
60

- 1
2
3 895 *Journal of Malacology*) **15**: 58–67.
- 4
5 896 **Leal JH, Harasewych MG. 1999.** Deepest Atlantic molluscs: hadal limpets (Mollusca,
6
7 897 Gastropoda, Cocculiniformia) from the northern boundary of the Caribbean Plate.
8
9 898 *Invertebrate Biology* **118**: 116–136.
- 10 899 **Lee H, Chen W-J, Puillandre N, Aznar-Cormano L, Tsai M-H, Samadi S. 2019.**
11
12 900 Incorporation of deep-sea and small-sized species provides new insights into
13
14 901 gastropods phylogeny. *Molecular Phylogenetics and Evolution* **135**: 136–147.
- 15 902 **Lesicki A. 1998.** Checklist of gastropod species referred to the order Cocculiniformia
16
17 903 Haszprunar, 1987 (Gastropoda: Cocculinoidea et Lepetelloidea) with some remarks on
18
19 904 their food preferences. *Folia Malacologica* **6**: 47–62.
- 20 905 **Lorion J, Buge B, Cruaud C, Samadi S. 2010.** New insights into diversity and evolution of
21
22 906 deep-sea Mytilidae (Mollusca: Bivalvia). *Molecular Phylogenetics and Evolution* **57**:
23
24 907 71–83.
- 25 908 **Lorion J, Duperron S, Gros O, Cruaud C, Samadi S. 2009.** Several deep-sea mussels and
26
27 909 their associated symbionts are able to live both on wood and on whale falls.
28
29 910 *Proceedings of the Royal Society B: Biological Sciences* **276**: 177–185.
- 30 911 **Lorion J, Kiel S, Faure B, Kawato M, Ho SYW, Marshall B, Tsuchida S, Miyazaki J-I,**
31
32 912 **Fujiwara Y. 2013.** Adaptive radiation of chemosymbiotic deep-sea mussels.
33
34 913 *Proceedings of the Royal Society B: Biological Sciences* **280**: 20131243.
- 35 914 **Marshall BA. 1985.** Recent and Tertiary cocculinidae and pseudococculinidae (Mollusca:
36
37 915 Gastropoda) from New Zealand and New South Wales. *New Zealand Journal of*
38
39 916 *Zoology* **12**: 505–546.
- 40 917 **McClain CR, Hardy SM. 2010.** The dynamics of biogeographic ranges in the deep sea.
41
42 918 *Proceedings of the Royal Society B: Biological Sciences* **277**: 3533–3546.
- 43 919 **McLean JH. 1987.** Taxonomic descriptions of cocculinid limpets (Mollusca,
44
45 920 Archaeogastropoda): two new species and three rediscovered species. *Zoologica*
46
47 921 *Scripta* **16**: 325–333.
- 48 922 **McLean JH, Harasewych MG. 1995.** Review of western Atlantic species of cocculinid and
49
50 923 pseudococculinid limpets, with descriptions of new species (Gastropoda:
51
52 924 Cocculiniformia). *Contributions in Science, Natural History Museum of Los Angeles*
53
54 925 *County* **453**: 1–33.
- 55 926 **Miller MA, Pfeiffer W, Schwartz T. 2010.** Creating the CIPRES Science Gateway for
56
57 927 inference of large phylogenetic trees. *2010 Gateway Computing Environments*
58
59
60

- 1
2
3 928 *Workshop (GCE)*. New Orleans: IEEE, 1–8.
4
5 929 **Moskalev LI. 1976.** Concerning the generic diagnostics of the Cocculinidae (Gastropoda,
6
7 930 Prosobranchia). *Trudy Instituta Okeanologii Imeni P. P. Shirshov, Akademiya Nauk*
8
9 931 *USSR 99*: 59–70. [in Russian; English translation by Shkurkin GV. 1978].
10
11 932 **Nantarat N, Sutcharit C, Tongkerd P, Wade CM, Naggs F, Panha S. 2019.** Phylogenetics
12 933 and species delimitations of the operculated land snail *Cyclophorus volvulus*
13
14 934 (Gastropoda: Cyclophoridae) reveal cryptic diversity and new species in Thailand.
15 935 *Scientific Reports 9*: 7041.
16
17 936 **Oksanen J, Blanchet FG, Friendly M, Kindt R, Legendre P, McGlenn D, Minchin PR,**
18
19 937 **O'Hara RB, Simpson GL, Solymos P, Stevens MHH, Szoecs E, Wagner H. 2019.**
20 938 *Vegan: community ecology package*. R package version 2.5-6. [https://CRAN.R-](https://CRAN.R-project.org/package=vegan)
21 939 [project.org/package=vegan](https://CRAN.R-project.org/package=vegan)
22
23 940 **Pante E, Corbari L, Thubaut J, Chan T-Y, Mana R, Boisselier M-C, Bouchet P, Samadi**
24 941 **S. 2012.** Exploration of the deep-sea fauna of Papua New Guinea. *Oceanography 25*:
25 942 214–225.
26
27 943 **Pante E, Puillandre N, Viricel A, Arnaud-Haond S, Aurelle D, Castelin M, Chenuil A,**
28 944 **Destombe C, Forcioli D, Valero M, Viard F, Samadi S. 2015.** Species are
29 945 hypotheses: avoid connectivity assessments based on pillars of sand. *Molecular*
30 946 *Ecology 24*: 525–544.
31
32 947 **Plouviez S, Shank TM, Faure B, Daguin-Thiebaut C, Viard F, Lallier FH, Jollivet D.**
33 948 **2009.** Comparative phylogeography among hydrothermal vent species along the East
34 949 Pacific Rise reveals vicariant processes and population expansion in the south.
35 950 *Molecular Ecology 18*: 3903–3917.
36
37 951 **Plum C, Pradillon F, Fujiwara Y, Sarrazin J. 2017.** Copepod colonization of organic and
38 952 inorganic substrata at a deep-sea hydrothermal vent site on the Mid-Atlantic Ridge.
39 953 *Deep Sea Research Part II: Topical Studies in Oceanography 137*: 335–348.
40
41 954 **Ponder WF, Lindberg DR. 1997.** Towards a phylogeny of gastropod molluscs: an analysis
42 955 using morphological characters. *Zoological Journal of the Linnean Society 119*: 83–
43 956 265.
44
45 957 **Pons J, Barraclough TG, Gomez-Zurita J, Cardoso A, Duran DP, Hazell S, Kamoun S,**
46 958 **Sumlin WD, Vogler AP. 2006.** Sequence-based species delimitation for the DNA
47 959 taxonomy of undescribed insects. *Systematic Biology 55*: 595–609.
48
49 960 **Puillandre N, Fedosov AE, Zaharias P, Aznar-Cormano L, Kantor YI. 2017.** A quest for
50
51
52
53
54
55
56
57
58
59
60

- 1
2
3 961 the lost types of *Lophiotoma* (Gastropoda: Conoidea: Turridae): integrative taxonomy
4 962 in a nomenclatural mess. *Zoological Journal of the Linnean Society* **181**: 243–271.
- 5
6
7 963 **Puillandre N, Lambert A, Brouillet S, Achaz G. 2012a.** ABGD, automatic barcode gap
8 964 discovery for primary species delimitation. *Molecular Ecology* **21**: 1864–1877.
- 9
10 965 **Puillandre N, Modica MV, Zhang Y, Sirovich L, Boisselier M-C, Cruaud C, Holford M,**
11 966 **Samadi S. 2012b.** Large-scale species delimitation method for hyperdiverse groups.
12 967 *Molecular Ecology* **21**: 2671–2691.
- 13
14
15 968 **Rambaut A. 1996.** *Se-al: sequence alignment editor version 1.0 a1*. Oxford: Department of
16 969 Zoology, University of Oxford.
- 17
18
19 970 **Rambaut A, Suchard MA, Xie D, Drummond AJ. 2014.** Tracer v1.6. Available from
20 971 <http://beast.bio.ed.ac.uk/Tracer>.
- 21
22 972 **Razkin O, Gómez-Moliner BJ, Vardinoyannis K, Martínez-Ortí A, Madeira MJ. 2017.**
23 973 Species delimitation for cryptic species complexes: case study of *Pyramidula*
24 974 (Gastropoda, Pulmonata). *Zoologica Scripta* **46**: 55–72.
- 25
26
27 975 **Ronquist F, Teslenko M, Van der Mark P, Ayres DL, Darling A, Höhna S, Larget B, Liu**
28 976 **L, Suchard MA, Huelsenbeck JP. 2012.** MrBayes 3.2: efficient Bayesian
29 977 phylogenetic inference and model choice across a large model space. *Systematic*
30 978 *Biology* **61**: 539–542.
- 31
32
33 979 **Saeedi H, Bernardino AF, Shimabukuro M, Falchetto G, Sumida PYG. 2019.**
34 980 Macrofaunal community structure and biodiversity patterns based on a wood-fall
35 981 experiment in the deep south-west Atlantic. *Deep Sea Research part I: Oceanographic*
36 982 *Research Papers* **145**: 73–82.
- 37
38
39 983 **Samadi S, Corbari L, Lorion J, Hourdez S, Haga T, Dupont J, Boisselier M-C, Richer de**
40 984 **Forges B. 2010.** Biodiversity of deep-sea organisms associated with sunken-wood or
41 985 other organic remains sampled in the tropical Indo-Pacific. *Cahiers de Biologie*
42 986 *Marine* **51**: 459–466.
- 43
44
45 987 **Samadi S, Quéméré E, Lorion J, Tillier A, von Cosel R, Lopez P, Cruaud C, Couloux A,**
46 988 **Boisselier-Dubayle M-C. 2007.** Molecular phylogeny in mytilids supports the
47 989 wooden steps to deep-sea vents hypothesis. *Comptes Rendus Biologies* **330**: 446–456.
- 48
49
50 990 **Schepman MM. 1908.** The Prosobranchia of the Siboga Expedition. Part I: Rhipidoglossa
51 991 and Docoglossa. *Siboga Expedition* **49a**: 1–98.
- 52
53
54 992 **Soltwedel T, Guilini K, Sauter E, Schewe I, Hasemann C. 2018.** Local effects of large
55 993 food-falls on nematode diversity at an arctic deep-sea site: Results from an *in situ*
56
57
58
59
60

- 1
2
3 994 experiment at the deep-sea observatory HAUSGARTEN. *Journal of Experimental*
4 995 *Marine Biology and Ecology* **502**: 129–141.
- 6 996 **Souza BHM, Passos FD, Shimabukuro M, Sumida PYG. 2021.** An integrative approach
8 997 distinguishes three new species of Abyssochrysoidea (Mollusca: Caenogastropoda)
9 998 associated with organic falls of the deep south-west Atlantic. *Zoological Journal of the*
11 999 *Linnean Society* **191**: 748–771.
- 13 1000 **Stamatakis A. 2014.** RAxML version 8: a tool for phylogenetic analysis and post-analysis of
15 1001 large phylogenies. *Bioinformatics* **30**: 1312–1313.
- 17 1002 **Stow DAV, Faugères J-C, Howe JA, Pudsey CJ, Viana AR. 2002.** Bottom currents,
18 1003 contourites and deep-sea sediment drifts: current state-of-the-art. *Geological Society*
20 1004 *London Memoirs* **22**: 7–20.
- 22 1005 **Strong EE, Harasewych MG, Haszprunar G. 2003.** Phylogeny of the Cocculinoidea
24 1006 (Mollusca, Gastropoda). *Invertebrate Biology* **122**: 114–125.
- 26 1007 **Stuart CT, Brault S, Rowe GT, Wei C-L, Wagstaff M, McClain CR, Rex MA. 2017.**
27 1008 Nestedness and species replacement along bathymetric gradients in the deep sea
28 1009 reflect productivity: a test with polychaete assemblages in the oligotrophic north-west
30 1010 Gulf of Mexico. *Journal of Biogeography* **44**: 548–555.
- 32 1011 **Tang CQ, Humphreys AM, Fontaneto D, Barraclough TG. 2014.** Effects of phylogenetic
34 1012 reconstruction method on the robustness of species delimitation using single-locus
36 1013 data. *Methods in Ecology and Evolution* **5**: 1086–1094.
- 38 1014 **Thiele J. 1903.** Die beschalten Gastropoden der deutschen Tiefsee-Expedition 1898–1899. A,
39 1015 systematisch-geographischer Teil. In: Martens E, ed. *Wissenschaftliche Ergebnisse der*
41 1016 *Deutschen Tiefsee-Expedition auf dem Dampfer "Valdivia" 1898–1899* **7**: 3–146.
- 43 1017 **Thiele J. 1908.** Ueber die Anatomie und systematische Stellung von *Bathysciadium*,
44 1018 *Lepetella*, und *Addisonia*. *Bulletin of the Museum of Comparative Zoology at Harvard*
46 1019 *College* **52**: 81–90.
- 48 1020 **Thiele J. 1909.** Cocculinoidea und die Gattungen *Phenacolepas* und *Titiscania*.
49 1021 *Systematisches Conchylien-Cabinet von Martini & Chemnitz* **2 11a**: 1–48.
- 51 1022 **Thiele J. 1925.** Prosobranchia. In: Kükenthal W, Krumbach T, eds. *Handbuch der Zoologie*.
53 1023 Berlin: Walter de Gruyter & Co. 40–94.
- 55 1024 **Thubaut J, Puillandre N, Faure B, Cruaud C, Samadi S. 2013.** The contrasted
56 1025 evolutionary fates of deep-sea chemosynthetic mussels (Bivalvia, Bathymodiolinae).
58 1026 *Ecology and Evolution* **3**: 4748–4766.
- 59
60

- 1
2
3 1027 **Turner RD. 1977.** Wood, mollusks, and deep-sea food chains. *American Malacological*
4 1028 *Union, Bulletin* **1977**: 13–19.
- 5
6
7 1029 **Warén A. 1996.** New and little known Mollusca from Iceland and Scandinavia 3. *Sarsia* **81**:
8 1030 197–245.
- 9
10 1031 **Warén A. 2011.** Molluscs on biogenic substrates. In: Bouchet P, Le Guyader H, Pascal O,
11 1032 eds. *The natural history of Santo*. Paris: Museum National d’Histoire Naturelle and
12 1033 Pro-Nature international; Marseille: IRD, 438–448.
- 13
14 1034 **Watson RB. 1886.** Report on the Scaphopoda and Gastropoda collected by *H.M.S.*
15 1035 *Challenger* during the years 1873–1876. Report on the scientific results of the voyage
16 1036 of the *H.M.S. Challenger*, 1873–1876. *Zoology* **15**: 1–680.
- 17
18
19 1037 **Wolff T. 1979.** Macrofaunal utilization of plant remains in the deep sea. *Sarsia* **64**: 117–136.
- 20
21 1038 **Yahagi T, Fukumori H, Warén A, Kano Y. 2019.** Population connectivity of hydrothermal-
22 1039 vent limpets along the northern Mid-Atlantic Ridge (Gastropoda: Neritimorpha:
23 1040 Phenacolepadidae). *Journal of the Marine Biological Association of the UK* **99**: 179–
24 1041 185.
- 25
26 1042 **Yahagi T, Thaler AD, Van Dover CL, Kano Y. 2020.** Population connectivity of the
27 1043 hydrothermal-vent limpet *Shinkailepas tollmanni* in the southwest Pacific
28 1044 (Gastropoda: Neritimorpha: Phenacolepadidae). *PLoS One* **15**: e0239784.
- 29
30 1045 **Yahagi T, Watanabe HK, Kojima S, Kano Y. 2017.** Do larvae from deep-sea hydrothermal
31 1046 vents disperse in surface waters? *Ecology* **98**: 1524–1534.
- 32
33 1047 **Young CM, Emson RH, Rice ME, Tyler PA. 2013.** A paradoxical mismatch of fecundity
34 1048 and recruitment in deep-sea opportunists: cocculinid and pseudococculinid limpets
35 1049 colonizing vascular plant remains on the Bahamian Slope. *Deep-Sea Research Part I-*
36 1050 *Topical Studies in Oceanography* **92**: 36–45.
- 37
38 1051 **Young CM, He R, Emler RB, Li Y, Qian H, Arellano SM, Gaest AV, Bennett KC, Wolf**
39 1052 **M, Smart TI, Rice ME. 2012.** Dispersal of deep-sea larvae from the intra-American
40 1053 seas: simulations of trajectories using ocean models. *Integrative and Comparative*
41 1054 *Biology* **52**: 483–496.
- 42
43 1055 **Zaharias P, Kantor Y, Fedosov AE, Criscione F, Hallan A, Kano Y, Bardin J, Puillandre**
44 1056 **N. 2020.** Just the once will not hurt: DNA suggests species lumping over two oceans
45 1057 in deep-sea snails (Cryptogemma). *Zoological Journal of the Linnean Society* **190**:
46 1058 532–557.
- 47
48 1059 **Zhang JJ, Kapli P, Pavlidis P, Stamatakis A. 2013.** A general species delimitation method
49
50
51
52
53
54
55
56
57
58
59
60

- 1
2
3
4 1060 with applications to phylogenetic placements. *Bioinformatics* **29**: 2869–2876.
- 5 1061 **Zhang K, Sun J, Xu T, Qiu J-W, Qian P-Y. 2021.** Phylogenetic relationships and
6
7 1062 adaptation in deep-sea mussels: insights from mitochondrial genomes. *International*
8
9 1063 *Journal of Molecular Sciences* **22**: 1900.
- 10 1064 **Zhang SQ, Zhang SP. 2018.** *Cocculina delphinicula* sp nov., a new cocculinid species from
11
12 1065 whale bone in the East China Sea (Gastropoda: Cocculiniformia). *Zootaxa* **4455**: 189–
13
14 1066 195.

15 1067 16 1068 SUPPORTING INFORMATION 17 1069

- 20 1070 **Table S1.** List of oceanographic expeditions and specimens analysed in this study.
- 21
22 1071 **Table S2.** Morphological conditions of SSHs.
- 23
24 1072 **Figure S1.** Maximum likelihood tree of cocculinids based on *cox1* dataset. Numbers at nodes
25
26 1073 represent bootstrap values in percentage. Name of specimens collected during *Tropical*
27 1074 *Deep Sea Benthos* expeditions are shown as: voucher number, expedition, station, depth;
28
29 1075 specimens collected around Japan: voucher number, locality or station, depth. See Table
30
31 1076 S2 for details.
- 32 1077 **Figure S2.** Maximum likelihood tree based on “master” 28S dataset. Numbers at nodes
33
34 1078 represent bootstrap values in percentage.
- 35
36 1079 **Figure S3.** 28S subtrees.
- 37
38 1080 **Figure S4.** Maximum likelihood tree based on combined three-gene dataset (*cox1*, 28S and
39 1081 *H3*). Numbers at nodes represent bootstrap values in percentage.
- 40
41 1082 **Figure S5.** Bayesian tree based on combined three-gene dataset (*cox1*, 28S and *H3*). Numbers
42
43 1083 at nodes represent posterior probability.
- 44 1084
45
46
47
48
49
50
51
52
53
54
55
56
57
58
59
60

1085 **Table 1.** Eight morphogroups of Cocculinidae and their habitats.

1086

| | Shell shape | Teleoconch sculpture | Copulatory organ | Epipodial tentacles | Habitat |
|-----------|-------------------------|---------------------------------|--------------------------------------|---------------------|---|
| MA | round | radial or plainly raised radial | modified right cephalic tentacle | present | wood |
| MB | Spindle or narrow-round | plainly raised radial | on oral lappet | present | wood |
| MC | round | radial, smooth or concentric | on oral lappet | present | wood |
| MD | round | clathrate | right cephalic tentacle (unmodified) | present | wood |
| ME | round | smooth | on mantle margin | present | wood |
| MF | round | radial | on foot | present | wood |
| MG | round | radial with pits | modified right cephalic tentacle | absent | wood, leaf, bone |
| MH | round | concentric or smooth | modified right cephalic tentacle | present | chondrichthyan egg case, deep-sea coral |

1087

1088

Pre-review Only

1
2
3
4
5
6
7
8
9
10
11
12
13
14
15
16
17
18
19
20
21
22
23
24
25
26
27
28
29
30
31
32
33
34
35
36
37
38
39
40
41
42
43
44
45
46
47
48
49
50
51
52
53
54
55
56
57
58
59
60

Table 2. Diagnoses of cocculinid genera (with unique conditions shown in **bold**).

| Genus | Protoconch sculpture | Teleoconch sculpture | Copulatory organ | Epipodial tentacles | Shell shape | Habitat | References |
|----------------------|----------------------|--------------------------------------|-------------------------------------|---------------------|--------------------------------|--|---|
| <i>Cocculina</i> | reticulate | radial, smooth or concentric | on oral lappet or foot | present | round | wood, dolphin skull | Haszprunar, 1987; McLean & Harasewych, 1995; Zhang & Zhang, 2018 |
| <i>Coccapigya</i> | reticulate | spinose | modified right cephalic tentacle | absent | round | wood, leaf, bone | Marshall, [1985] 1986; McLean & Harasewych, 1995; see main text for habitat |
| <i>Cococrater</i> | reticulate | radial or plainly raised radial | modified right cephalic tentacle | present | round | wood | Haszprunar, 1987; McLean & Harasewych, 1995 |
| <i>Paracocculina</i> | reticulate | radial | on foot or oral lappet | present | round | wood | Strong <i>et al.</i> , 2003 |
| <i>Fedikovella</i> | concentric | reticulate | right cephalic tentacle; unmodified | present | round | wood | Haszprunar, 1987; Strong <i>et al.</i> , 2003 |
| <i>Teuthirostria</i> | smooth | reticulate | modified right cephalic tentacle | present | round | cephalopod beak | Moskalev, 1976; McLean & Harasewych, 1995; Leal & Harasewych, 1999 |
| <i>Macleaniella</i> | smooth | radial (with an inner septum) | modified right cephalic tentacle | present | round | wood | Moskalev, 1976; Leal & Harasewych, 1999; Strong <i>et al.</i> , 2003 |
| nGen1 | reticulate | radial, smooth or concentric | on oral lappet | present | round | wood | This study |
| nGen2 | reticulate | smooth | on mantle margin | present | round | wood | This study |
| nGen3 | reticulate | plainly raised radial | on oral lappet | present | spindle or narrow round | wood | This study |
| nGen4 | reticulate | concentric or smooth | modified right cephalic tentacle | present | round | chondrichthyan egg case, deep-sea coral | This study |

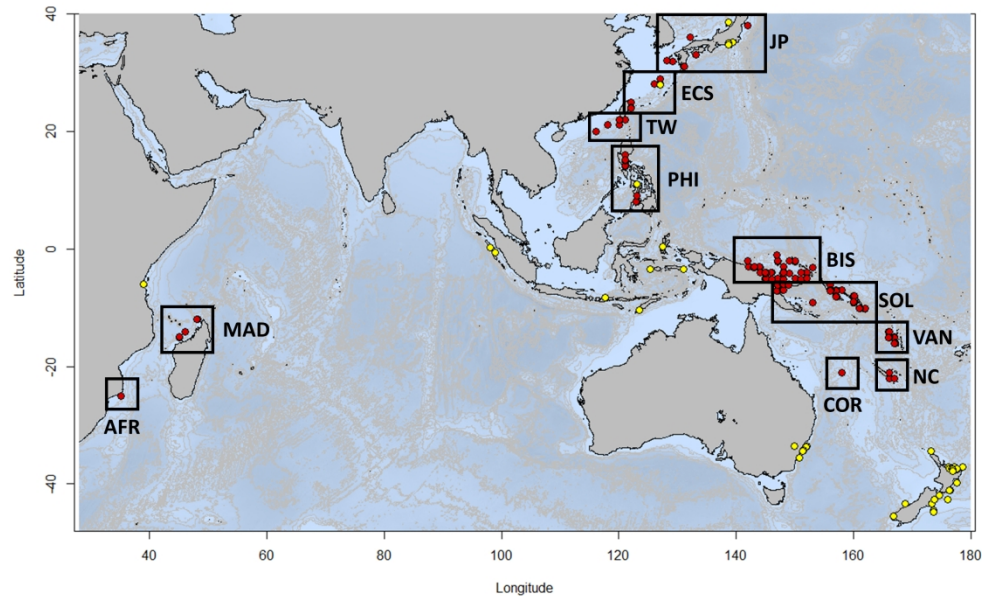


Figure 1. Localities of cocculinid specimens collected during our expeditions (red) and those in literature records (yellow; Watson, 1886; Schepman, 1908; Thiele, 1925; Marshall, 1985; Hasegawa, 1997; Lesicki, 1998; Zhang & Zhang, 2018) in Indo-West Pacific. The square indicates the 11 regions identified. AFR: Mozambique Channel; MAD: Madagascar; TW: Taiwan plus South China Sea; ECS: East China Sea; PHI: seas surrounding the Philippines; JP: seas surrounding Japan; BIS: Bismarck Sea; SOL: Solomon Sea; COR: Coral Sea; Van: seas surrounding Vanuatu; NC: seas surrounding New Caledonia.

254x190mm (300 x 300 DPI)

1
2
3
4
5
6
7
8
9
10
11
12
13
14
15
16
17
18
19
20
21
22
23
24
25
26
27
28
29
30
31
32
33
34
35
36
37
38
39
40
41
42
43
44
45
46
47
48
49
50
51
52
53
54
55
56
57
58
59
60

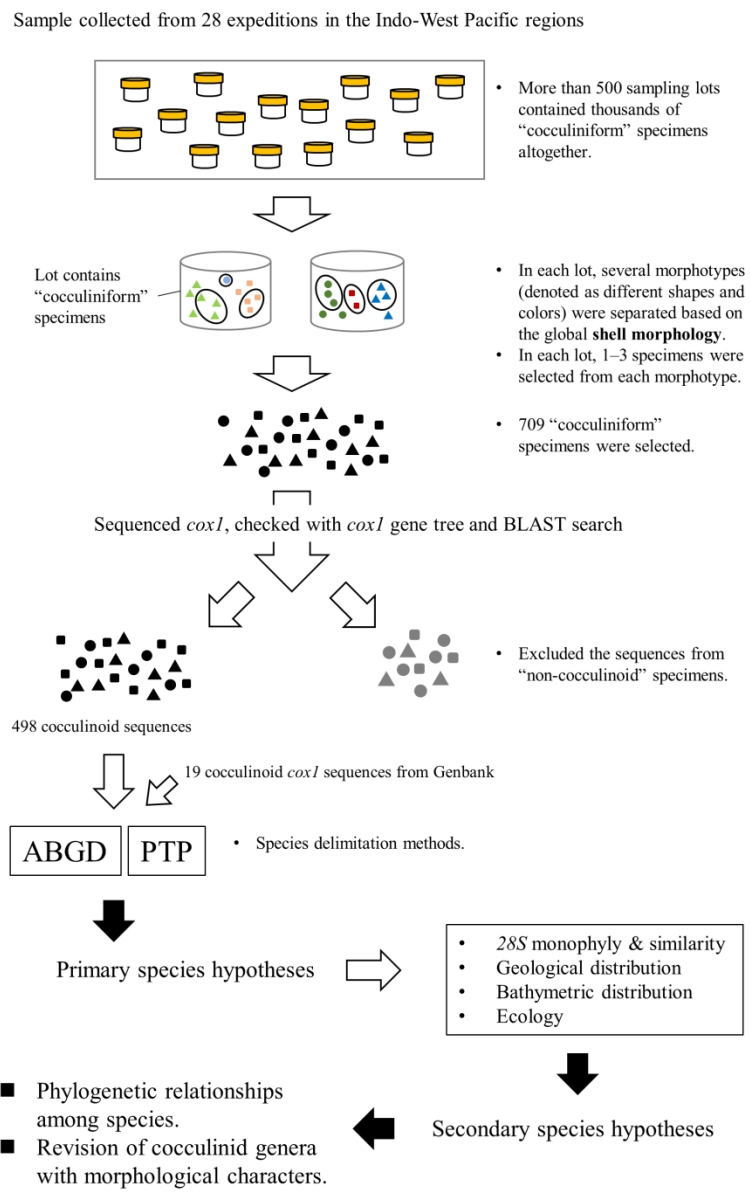


Figure 2. Diagram of integrative approach used for species delimitation.

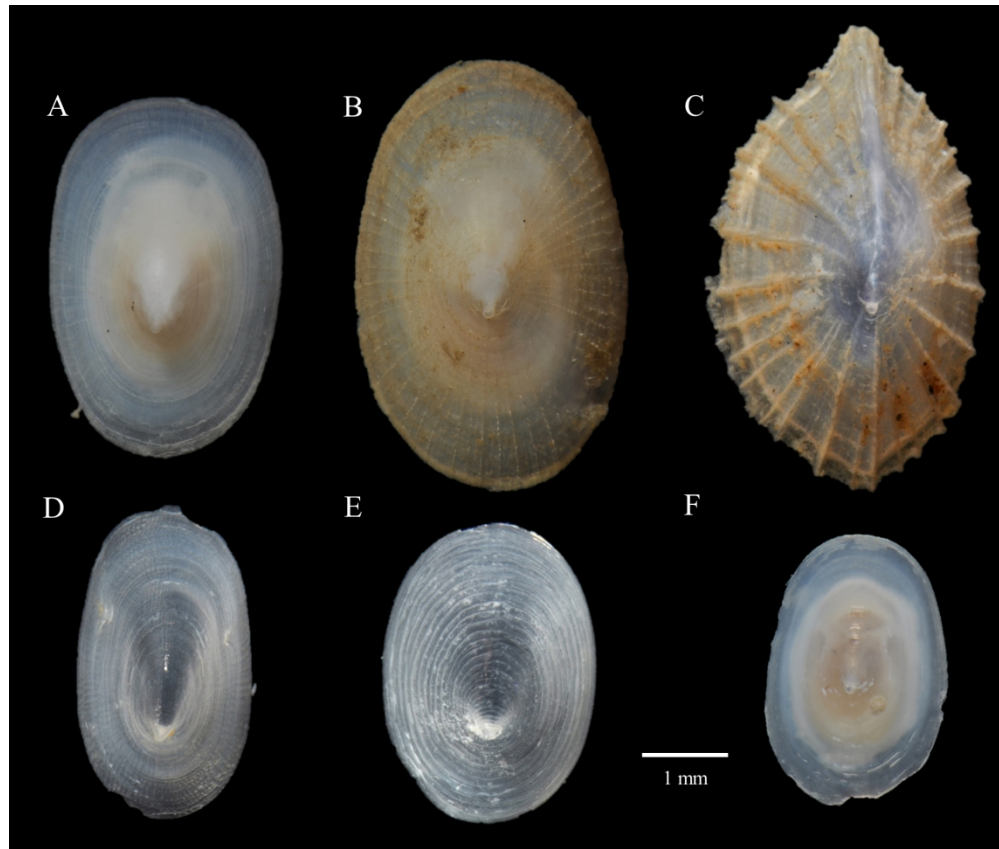


Figure 3. Character used in morphological examination. Teleoconch structure: (A) radially ribbed (MNHN-IM-2013-42733, MC10), (B) radially ribbed with pits and hairs (MNHN-IM-2013-42896, MG5), (C) plainly raised radially ribbed (MNHN-IM-2013-62346), (D) clathrate (MNHN-IM-2013-62341, MD5), (E) concentric (MNHN-IM-2009-11985, MH1), or (F) smooth (MNHN-IM-2013-42654, ME1).

1
2
3
4
5
6
7
8
9
10
11
12
13
14
15
16
17
18
19
20
21
22
23
24
25
26
27
28
29
30
31
32
33
34
35
36
37
38
39
40
41
42
43
44
45
46
47
48
49
50
51
52
53
54
55
56
57
58
59
60

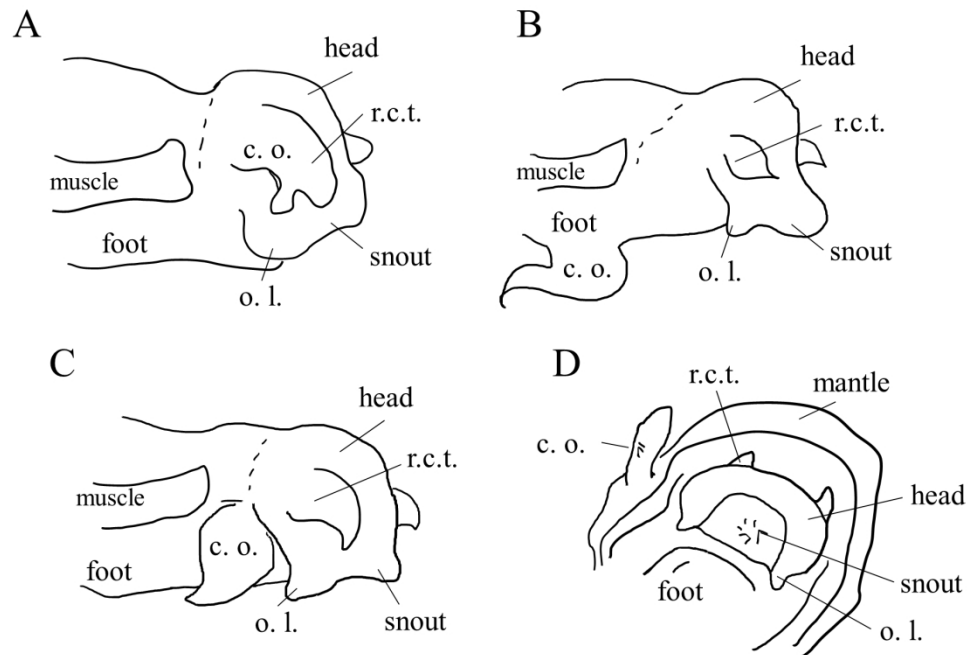


Figure 4. Character used in morphological examination. Copulatory organ: (A) associated with or branched from right cephalic tentacle, (B) originated from foot, (C) originated from oral lappet, or (D) originated from mantle margin. c.o.: copulatory organ, r.c.t.: right cephalic tentacle, o. l.: oral lappet.

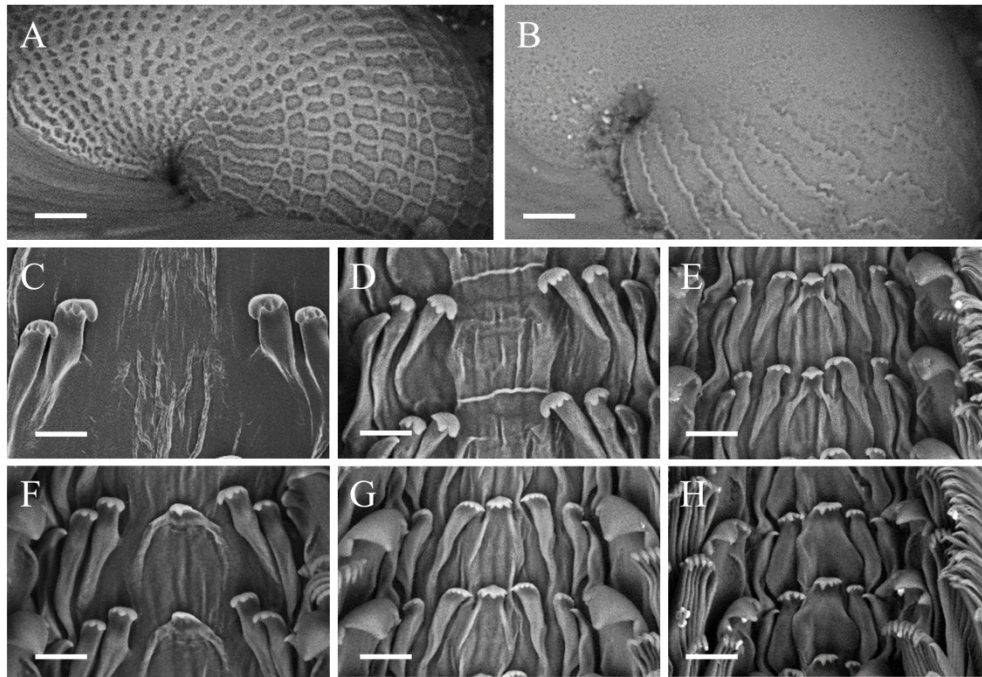


Figure 5. Characters used in morphological examination. Protoconch: (A) reticulate (MNHN-IM-2013-42752, MC2) or (B) concentric (MNHN-IM-2013-62343, MD8). Radula: (C) "obsolete," (*C. japonica*) (D) "acuspate-flat," (MNHN-IM-2013-42608, MC9) (E) "unicuspid narrow," (MNHN-IM-2013-42715, MB1) (F) "unicuspid broad," (MNHN-IM-2013-42803, MC14) (G) "multicuspid narrow," (MNHN-IM-2013-42570, MD3) or (H) "multicuspid broad" (MNHN-IM-2013-62344, MA5).

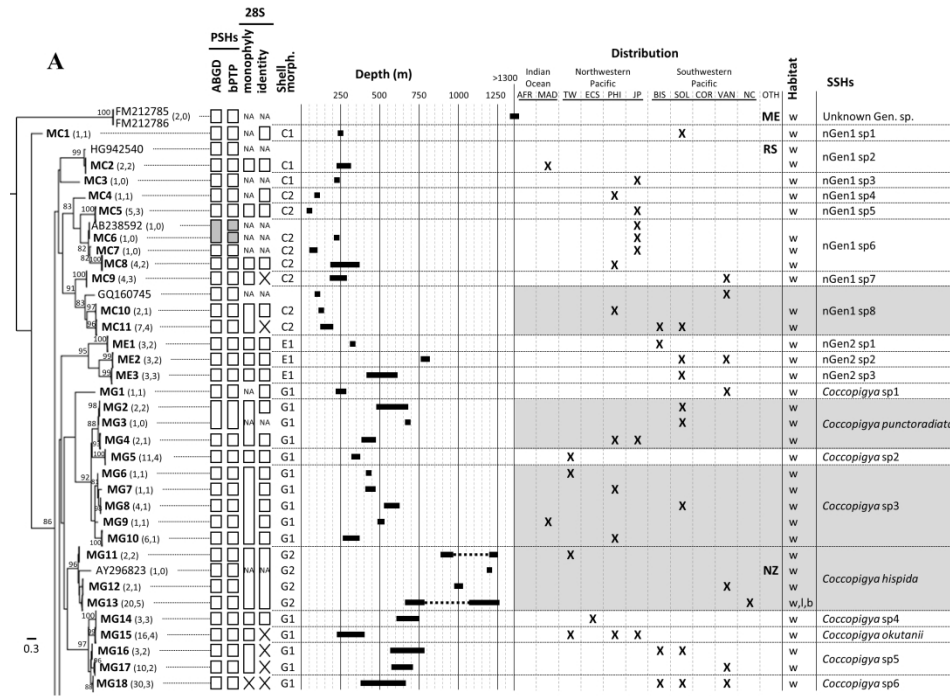


Figure 6. Maximum-likelihood tree based on *cox1* dataset of cocculinids with results of species delimitation analyses. Numbers at tree nodes represent bootstrap values in percentage (values < 70% not shown). Names of primary species hypotheses (PSHs) are followed by number of sequences determined (*cox1* and 28S). Boxes for PSHs are highlighted in gray when differently delimited in ABGD and PTP analyses (numerals in boxes represent numbers of *cox1* sequences; asterisk and plus for MA9–MA12 denote same PSH detected by ABGD and PTP, respectively). 28S sequence monophyly and identity are also shown as empty boxes (NA: no data); cross marks (X) indicate non-monophyly or genotype shared with other PSHs. The “shell morph.” denotes distinguishable forms of the shell with different numerals in each morphogroup (MA–MH); shell morph. C1 for MC1–MC3, for example, means that the three PSHs are identical in conchological characteristics. Known bathymetric and geographic distributions and habitat are also provided for each PSH (bathymetric distribution — sampled depth range shown in lines, dotted lines represent the estimated distributed range; geographic distribution — AFR: Mozambique channel, MAD: north Madagascar, TW: Taiwan and South China Sea, ECS: East China Sea, PHI: Philippines, JP: Japan, BIS: Bismarck Sea, SOL: Solomon Sea, COR: Coral Sea, VAN: Vanuatu, NC: New Caledonia, OTH: others, ME: Mediterranean, NZ: New Zealand, RS: Red Sea, AT: Atlantic, EP: East Pacific, WS: Weddell Sea; habitat — w: wood, l: leaf, b: bone, c: coral, e: egg case, vent*: hydrothermal vent area). Final, secondary species hypotheses (SSHs) are shown with generic and species names if available; those found from more than one area (northwestern Pacific, southwestern Pacific, and Indian Ocean) are highlighted in gray.

285x199mm (300 x 300 DPI)

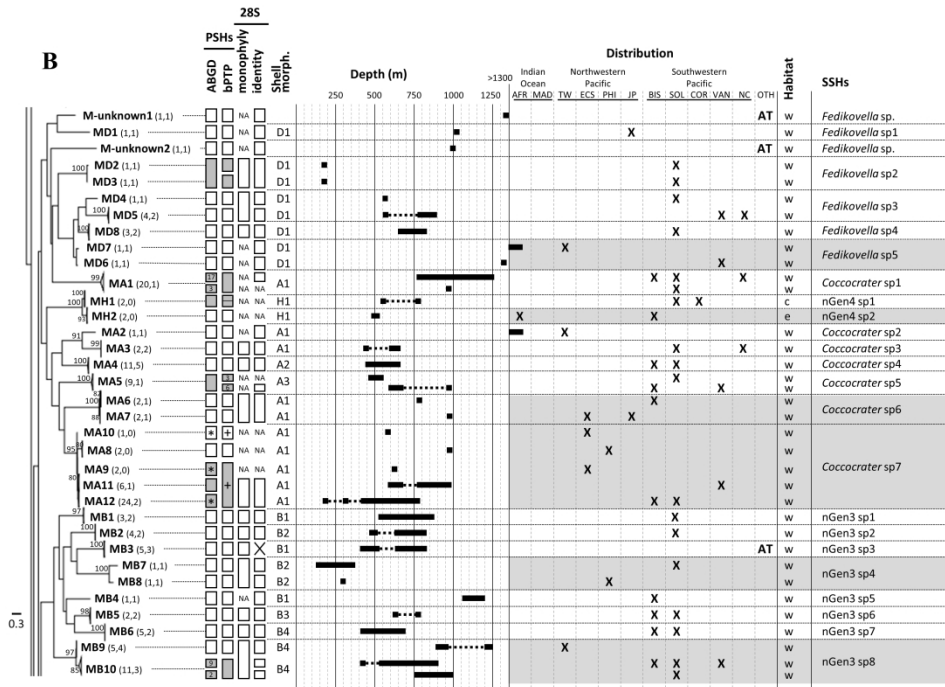


Figure 6. Maximum-likelihood tree based on *cox1* dataset of cocculinids with results of species delimitation analyses. Numbers at tree nodes represent bootstrap values in percentage (values < 70% not shown). Names of primary species hypotheses (PSHs) are followed by number of sequences determined (*cox1* and 28S). Boxes for PSHs are highlighted in gray when differently delimited in ABGD and PTP analyses (numerals in boxes represent numbers of *cox1* sequences; asterisk and plus for MA9–MA12 denote same PSH detected by ABGD and PTP, respectively). 28S sequence monophyly and identity are also shown as empty boxes (NA: no data); cross marks (X) indicate non-monophyly or genotype shared with other PSHs. The “shell morph.” denotes distinguishable forms of the shell with different numerals in each morphogroup (MA–MH); shell morph. C1 for MC1–MC3, for example, means that the three PSHs are identical in conchological characteristics. Known bathymetric and geographic distributions and habitat are also provided for each PSH (bathymetric distribution — sampled depth range shown in lines, dotted lines represent the estimated distributed range; geographic distribution — AFR: Mozambique channel, MAD: north Madagascar, TW: Taiwan and South China Sea, ECS: East China Sea, PHI: Philippines, JP: Japan, BIS: Bismarck Sea, SOL: Solomon Sea, COR: Coral Sea, VAN: Vanuatu, NC: New Caledonia, OTH: others, ME: Mediterranean, NZ: New Zealand, RS: Red Sea, AT: Atlantic, EP: East Pacific, WS: Weddell Sea; habitat — w: wood, l: leaf, b: bone, c: coral, e: egg case, vent*: hydrothermal vent area). Final, secondary species hypotheses (SSHs) are shown with generic and species names if available; those found from more than one area (northwestern Pacific, southwestern Pacific, and Indian Ocean) are highlighted in gray.

285x199mm (300 x 300 DPI)

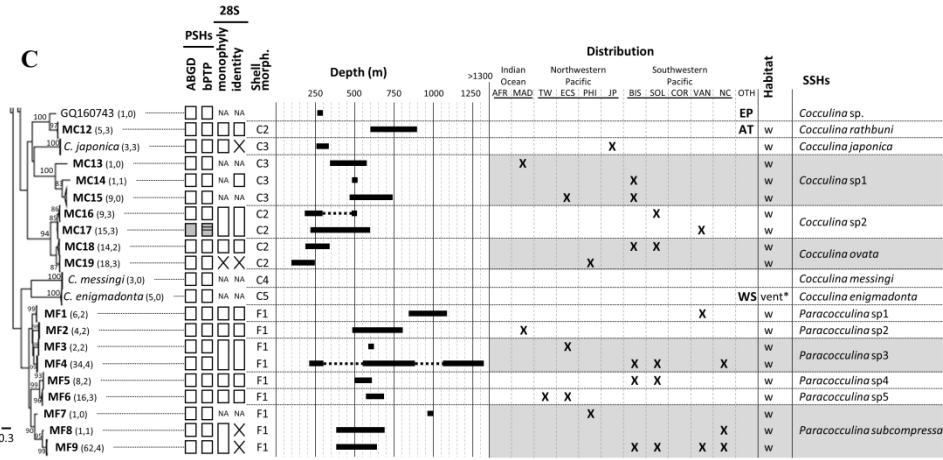


Figure 6. Maximum-likelihood tree based on *cox1* dataset of cocculinids with results of species delimitation analyses. Numbers at tree nodes represent bootstrap values in percentage (values < 70% not shown). Names of primary species hypotheses (PSHs) are followed by number of sequences determined (*cox1* and 28S). Boxes for PSHs are highlighted in gray when differently delimited in ABGD and PTP analyses (numerals in boxes represent numbers of *cox1* sequences; asterisk and plus for MA9–MA12 denote same PSH detected by ABGD and PTP, respectively). 28S sequence monophyly and identity are also shown as empty boxes (NA: no data); cross marks (X) indicate non-monophyly or genotype shared with other PSHs. The “shell morph.” denotes distinguishable forms of the shell with different numerals in each morphogroup (MA–MH); shell morph. C1 for MC1–MC3, for example, means that the three PSHs are identical in conchological characteristics. Known bathymetric and geographic distributions and habitat are also provided for each PSH (bathymetric distribution — sampled depth range shown in lines, dotted lines represent the estimated distributed range; geographic distribution — AFR: Mozambique channel, MAD: north Madagascar, TW: Taiwan and South China Sea, ECS: East China Sea, PHI: Philippines, JP: Japan, BIS: Bismarck Sea, SOL: Solomon Sea, COR: Coral Sea, VAN: Vanuatu, NC: New Caledonia, OTH: others, ME: Mediterranean, NZ: New Zealand, RS: Red Sea, AT: Atlantic, EP: East Pacific, WS: Weddell Sea; habitat — w: wood, l: leaf, b: bone, c: coral, e: egg case, vent*: hydrothermal vent area). Final, secondary species hypotheses (SSHs) are shown with generic and species names if available; those found from more than one area (northwestern Pacific, southwestern Pacific, and Indian Ocean) are highlighted in gray.

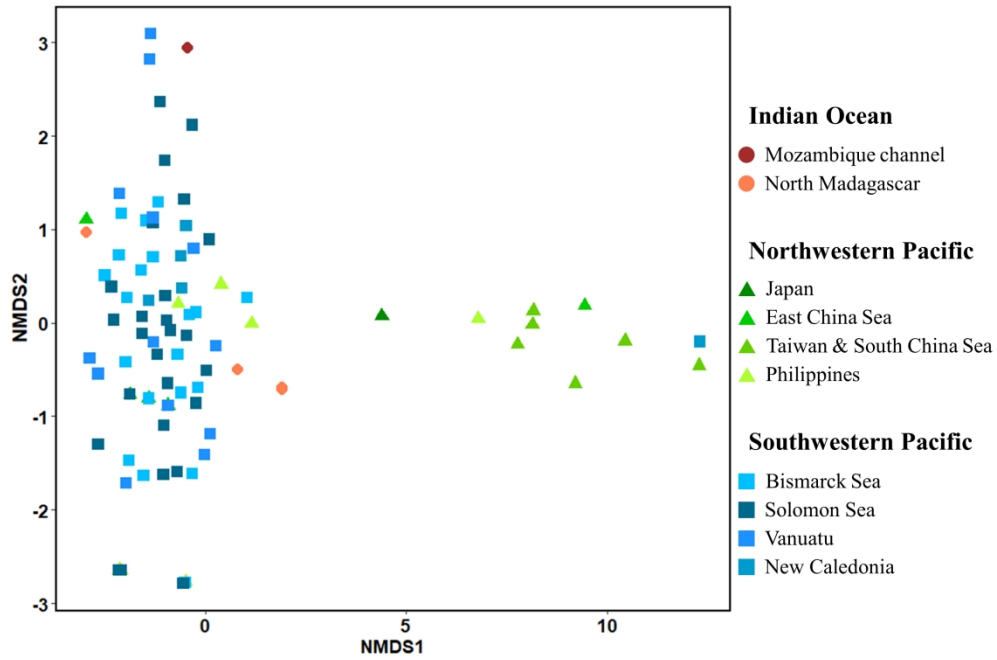


Figure 7. Nonmetric multidimensional scaling (NMDS) plot based on Jaccard index for cocculinid species composition among 157 stations in Indo-West Pacific.

254x190mm (300 x 300 DPI)

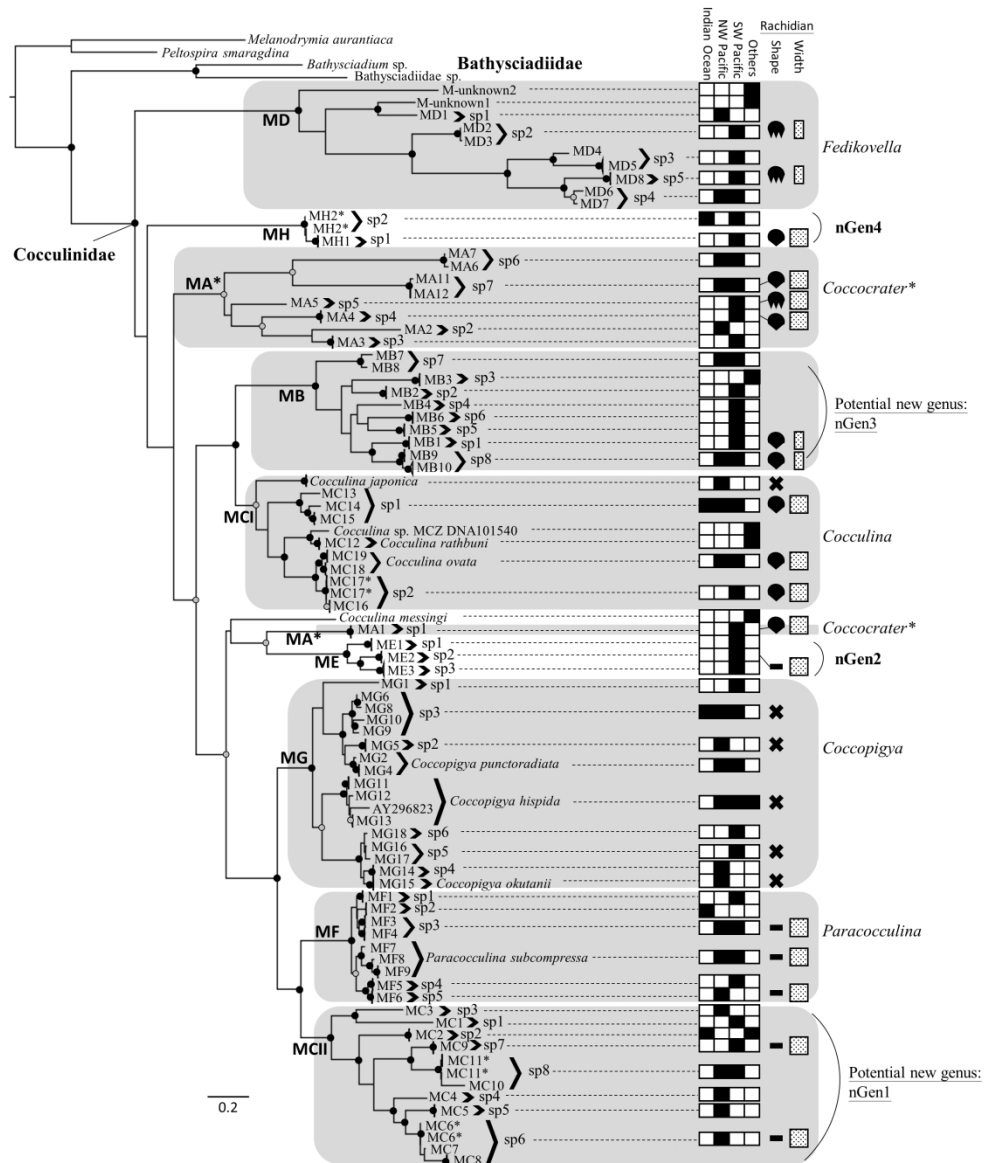


Figure 8. Combined three-gene ML tree for 138 cocculinid specimens (1,421 bp from *cox1*, 28S and H3). Nodal supports are shown as circles on nodes. Nodes supported by both bootstrap value (BS) $\geq 80\%$ and posterior probability (PP) of ≥ 0.95 are shown in black circles; nodes supported by only BS $\geq 80\%$ or PP ≥ 0.95 are shown in grey circles. Nodes with BS of $< 80\%$ and PP < 0.95 are not marked with a circle. Morphogroup types are plotted on the tree (Table S2). Geographic distribution of each species is shown with filled square(s). Different shapes of rachidian tooth of radula are denoted with following symbols: X, obsolete; —, acuspate; circle with three spike: multicuspid; circle with a single spike, unicuspid. Dotted squares, broad or narrow, indicate relative width of rachidian tooth. Asterisks represent non-monophyletic morphogroup.

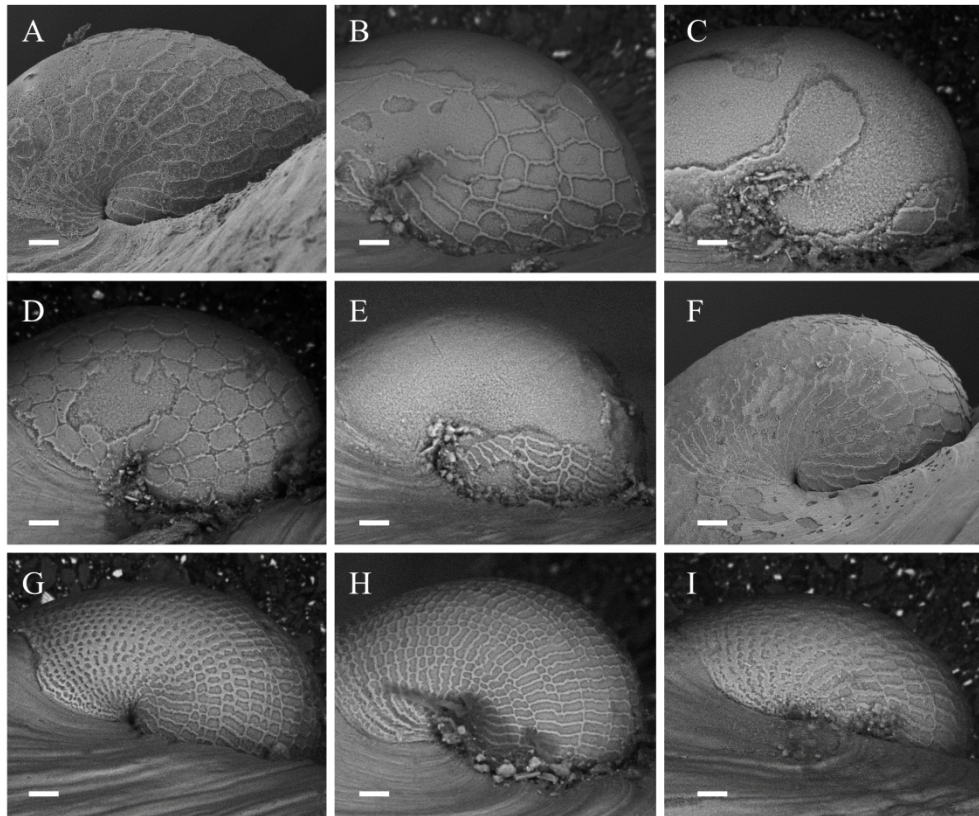


Figure 9. Protoconchs of sequenced specimens. (A) MNHN-IM-2013-59217 (MA4); (B) MNHN-IM-2013-42738 (MA8); (C) MNHN-IM-2013-42581 (MA12); (D) MNHN-IM-2013-62346 (MB7); (E) MNHN-IM-2013-42709 (MC15); (F) MNHN-IM-2013-42850 (MC18); (G) MNHN-IM-2013-42752 (MC2); (H) MNHN-IM-2013-42608 (MC9); (I) HS215 (MC5). Scale bars = 20 μm .

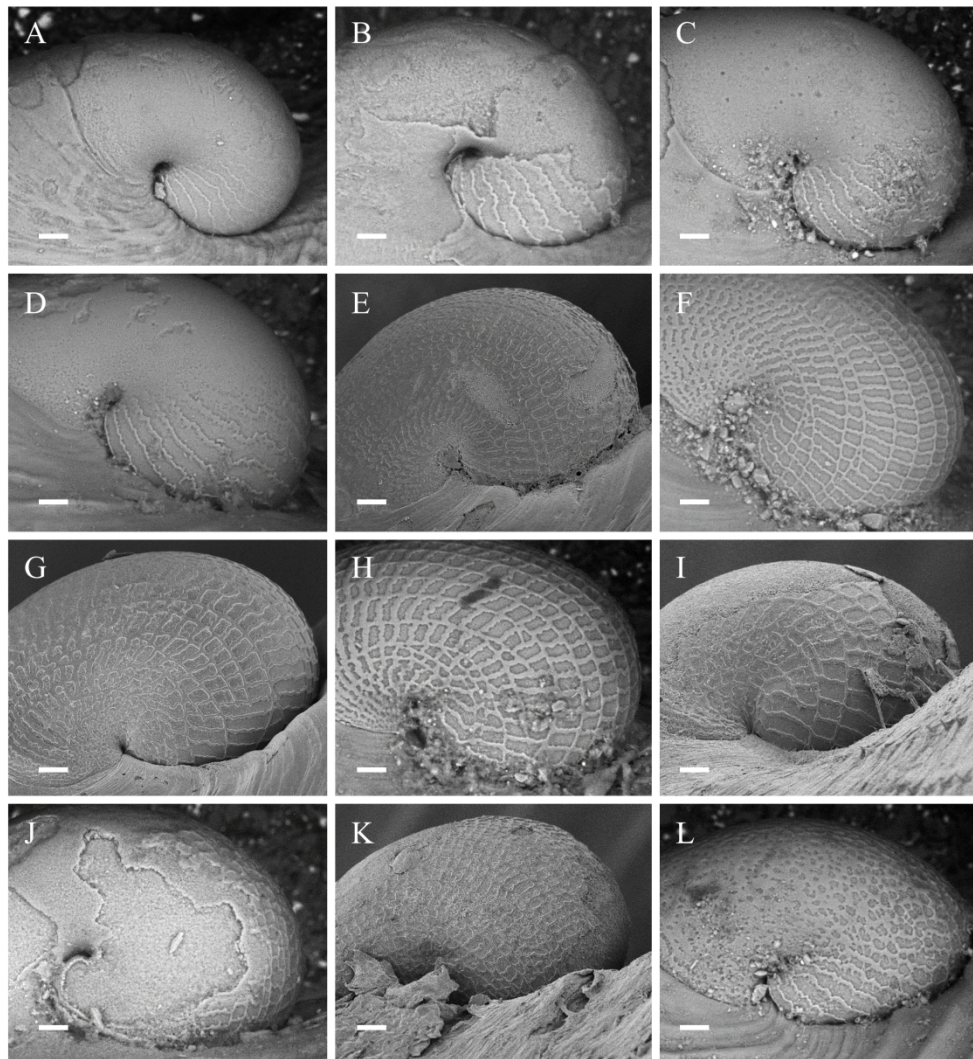


Figure 10. Protoconchs of sequenced specimens. (A) MNHN-IM-2013-42570 (MD3); (B) MNHN-IM-2013-42648 (MD4); (C) MNHN-IM-2013-62341 (MD5); (D) MNHN-IM-2013-62343 (MD8); (E) MNHN-IM-2013-42654 (ME1); (F) MNHN-IM-2013-42627 (MF9); (G) MNHN-IM-2013-42878 (MF6); (H) MNHN-IM-2013-42748 (MF2); (I) MNHN-IM-2013-42907 (MG13); (J) MNHN-IM-2013-42798 (MG8); (K) MNHN-IM-2013-42896 (MG5); (L) MNHN-IM-2009-11985 (MH1). Scale bars = 20 μ m.

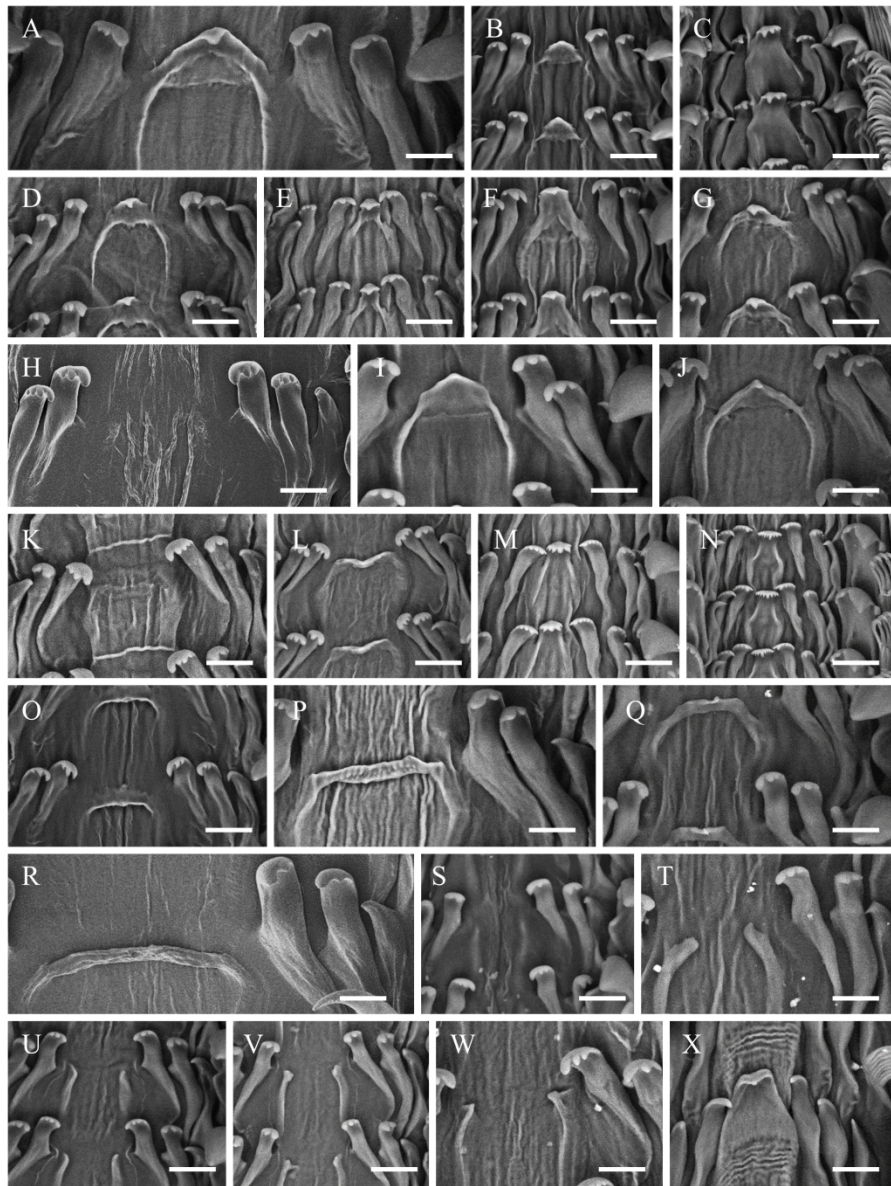


Figure 11. Radulae of sequenced specimens and an additional examined specimen of *C. japonica*. (A) MNHN-IM-2013-42671 (MA1), "unicuspid broad"; (B) MNHN-IM-2013-42687 (MA4), "unicuspid broad"; (C) MNHN-IM-2013-62344 (MA5), "multicuspid broad"; (D) MNHN-IM-2013-42828 (MA12), "unicuspid broad"; (E) MNHN-IM-2013-42715 (MB1), "unicuspid narrow"; (F) MNHN-IM-2013-42845 (MB10), "unicuspid narrow"; (G) MNHN-IM-2013-42803 (MC14), "unicuspid broad"; (H) *C. japonica*, "obsolete"; (I) MNHN-IM-2013-42799 (MC18), "acuspate-flat"; (J) MNHN-IM-2013-42968 (MC16), "unicuspid broad"; (K) MNHN-IM-2013-42608 (MC9), "acuspate-flat"; (L) HS217 (MC6), "acuspate-flat"; (M) MNHN-IM-2013-42570 (MD3), "multicuspid narrow"; (N) MNHN-IM-2013-42643 (MD8), "multicuspid narrow"; (O) MNHN-IM-2013-42620 (ME2), "acuspate-flat"; (P) MNHN-IM-2013-42992 (MF9), "acuspate-flat"; (Q) MNHN-IM-2013-40565 (MF6), "acuspate-flat"; (R) HS227 (MF3) "acuspate-flat"; (S) MNHN-IM-2013-42732 (MG10), "obsolete"; (T) MNHN-IM-2013-42863 (MG11), "obsolete"; (U) MNHN-IM-2013-42896 (MG5), "obsolete"; (V) MNHN-IM-2013-42874 (MG15), "obsolete"; (W) MNHN-IM-2013-42851 (MG16), "obsolete"; (X) MNHN-IM-2009-11985 (MH1), "unicuspid broad". Scale bars = 20 μ m.

- 1
- 2
- 3
- 4
- 5
- 6
- 7
- 8
- 9
- 10
- 11
- 12
- 13
- 14
- 15
- 16
- 17
- 18
- 19
- 20
- 21
- 22
- 23
- 24
- 25
- 26
- 27
- 28
- 29
- 30
- 31
- 32
- 33
- 34
- 35
- 36
- 37
- 38
- 39
- 40
- 41
- 42
- 43
- 44
- 45
- 46
- 47
- 48
- 49
- 50
- 51
- 52
- 53
- 54
- 55
- 56
- 57
- 58
- 59
- 60