



HAL
open science

Theoretical modeling of dendrite growth from conductive wire electro-polymerization

Ankush Kumar, Kamila Janzakova, Yannick Coffinier, Sébastien Pecqueur, F.
Alibart

► **To cite this version:**

Ankush Kumar, Kamila Janzakova, Yannick Coffinier, Sébastien Pecqueur, F. Alibart. Theoretical modeling of dendrite growth from conductive wire electro-polymerization. *Scientific Reports*, 2022, 12 (1), pp.6395. 10.1038/s41598-022-10082-6 . hal-03662526

HAL Id: hal-03662526

<https://hal.science/hal-03662526v1>

Submitted on 19 May 2022

HAL is a multi-disciplinary open access archive for the deposit and dissemination of scientific research documents, whether they are published or not. The documents may come from teaching and research institutions in France or abroad, or from public or private research centers.

L'archive ouverte pluridisciplinaire **HAL**, est destinée au dépôt et à la diffusion de documents scientifiques de niveau recherche, publiés ou non, émanant des établissements d'enseignement et de recherche français ou étrangers, des laboratoires publics ou privés.



Distributed under a Creative Commons Attribution 4.0 International License



OPEN

Theoretical modeling of dendrite growth from conductive wire electro-polymerization

Ankush Kumar¹✉, Kamila Janzakova¹, Yannick Coffinier¹, Sébastien Pecqueur¹ & Fabien Alibert^{1,2}

Electropolymerization is a bottom-up materials engineering process of micro/nano-scale that utilizes electrical signals to deposit conducting dendrites morphologies by a redox reaction in the liquid phase. It resembles synaptogenesis in the brain, in which the electrical stimulation in the brain causes the formation of synapses from the cellular neural composites. The strategy has been recently explored for neuromorphic engineering by establishing link between the electrical signals and the dendrites' shapes. Since the geometry of these structures determines their electrochemical properties, understanding the mechanisms that regulate polymer assembly under electrically programmed conditions is an important aspect. In this manuscript, we simulate this phenomenon using mesoscale simulations, taking into account the important features of spatial–temporal potential mapping based on the time-varying signal, the motion of charged particles in the liquid due to the electric field, and the attachment of particles on the electrode. The study helps in visualizing the motion of the charged particles in different electrical conditions, which is not possible to probe experimentally. Consistent with the experiments, the higher AC frequency of electrical activities favors linear wire-like growth, while lower frequency leads to more dense and fractal dendrites' growth, and voltage offset leads to asymmetrical growth. We find that dendrites' shape and growth process systematically depend on particle concentration and random scattering. We discover that the different dendrites' architectures are associated with different Laplace and diffusion fields, which govern the monomers' trajectory and subsequent dendrites' growth. Such unconventional engineering routes could have a variety of applications from neuromorphic engineering to bottom-up computing strategies.

The brain is an incredible computing system that has served as an inspiration for the construction of circuits for computational hardware and software^{1–5}. Brain-inspired machine learning-based software techniques have accomplished various feats in terms of handling image, signal, and natural language-based challenges^{1,2}, but they continue to suffer in terms of many orders of high energy consumption³. One key explanation for the computing hardware's inadequacies in comparison to the brain is its architecture^{6,7}. On the one hand, the brain uses a bottom-up strategy for construction, using biochemical ingredients in liquid and electrical activity, while existing software and hardware, on the other hand, use a top-down approach, in which all possible connections must be created before training, and their strengths are modulated during the training process, and weak connections are only precluded^{8,9}. It results in several orders of magnitude higher energy consumption of existing hardware compared to the brain due to fully connected network training, and from a hardware standpoint, it is extremely difficult to create fully connected networks with a higher number of neurons due to space constraints for dense connectivity. Thus, the biological strategy of generating just relevant connections might be a valuable option for conserving resources, space, and energy usage in computer hardware^{6,7,10,11}. With this inspiration, the materials engineering technique of electropolymerization^{12,13} has been explored to create electrical activity-driven connections^{15–20}. Monomers present in the liquid phase polymerize on the electrodes based on electrical activity in these techniques^{12,13}. The connection between the electrodes, in this case, maybe managed by electrical activity between the electrodes, which is important for neuromorphic applications. We recently demonstrated experimentally that signal parameters may be utilized to consistently generate diverse interconnected morphologies¹⁴. Koizumi et al. showed the electropolymerization of Poly(3,4-ethylenedioxythiophene) (PEDOT) derivatives and discovered that the propagation was in the form of fiber from the ends of Au bipolar

¹Univ. Lille, CNRS, Centrale Lille, Univ. Polytechnique Hauts-de-France, UMR 8520-IEMN, 59000 Lille, France. ²Laboratoire Nanotechnologies and Nanosystèmes (LN2), CNRS, Université de Sherbrooke, Sherbrooke J1X0A5, Canada. ✉email: ankush.kumar@iemn.fr

electrodes (BPEs) in the parallel direction to the external electric field¹⁶. By adjusting the applied voltage, duty factor, and electrode spacing, Eickenscheidt et al. showed the formation of diverse polymeric forms¹⁷. Unlike previous neuromorphic options, the suggested technique is more closely related to biological circumstances and is created from monomers present in the liquid phase, similar to the constituents of neurotransmitters involved in synaptogenesis^{6,7,10,11}. With these dendritic wires, the engineering path has opened up opportunities for neuromorphic computation, and several research groups are investigating electro-polymerization as a viable technique for neuromorphic computing. In this spirit, Akayi-Kasaya et al. demonstrated the suitability of conductive polymer wires derived by bipolar electro polymerization for neuromorphic applications, where the morphology's electro polymerization development is directly related to the learning process of artificial synapses¹⁸. Hagiwara et al. demonstrated long-term potentiation and short-term potentiation using the varied frequency of continuous pulses¹⁹. Ji et al. built organic electrochemical transistors (OECTs) based on bipolar electropolymerization, and the performance of the OECTs may be modified by adjusting the electropolymerization settings²⁰. Recently, the technique has been explored for neuromorphic functions such as Hebbian learning and pattern recognition²¹. We have also recently demonstrated short-term and long-term memories for neuromorphic functions with electro-polymerized OECT dendrites²². The electropolymerized dendrite structures, controlled by the parameters can also be employed in several applications needing fractal electrodes such as super capacitors²³ heat transfer²⁴, fractal antennas²⁵, fractal absorbers²⁶, solar cells electrodes²⁷, and electronic wire connections²⁸ etc.

Since one can employ different conditions of chemical material type, experimental conditions, electrical parameters, and electrode geometry configurations, it is important to understand the phenomena, generic dependence of parameters, affecting their growth process to well tune their morphologies for desired connection types. In all of the preceding situations, the experimental investigations primarily highlight the growth and final pattern of dendritic structures under various electrical activities and experimental settings. Very recently, the potential generated in the process has been attempted to be mapped by electrochemiluminescence²⁹. However, since the growth occurs from one specific composition of chemical species diluted or dispersed in the liquid phase, it is beyond the experimental and optical microscopy scope to see the motion and deposition of such ingredients forming a particular morphology and systematically predict it under various chemical compositions. There are currently no modeling methodologies available to describe the evolution of electro-polymerized structures under diverse electrical, chemical and geometrical settings. Ab-initio simulations based on atomic and molecular interactions are not capable of modelling structures with orders of magnitude larger than molecular sizes. Furthermore, the time-varying signal and evolving electrode (due to electro-polymerization on the electrodes) make such simulations challenging to run on a commercial tool. Taking these considerations into account, we present a mesoscale simulations model that incorporates particle interaction and mobility, based on the assumption that mesoscale dendritic morphologies are yielded by charged particle aggregation of oligomers preformed and dispersed in the electrolyte prior to seeding on the electrode. The modeling technique can be useful in understanding the influence of required elements on morphology and in establishing the link between electrical signals and dendrite-morphology. The modeling provided in the paper reflects the many forms of neurons and synapses that are regulated by a few factors such as growth area, pruning time scale, and spatial distribution of neurotrophic particles³⁰. Apart from the neuromorphic engineering community, the investigation can be an important contribution to different domains of science interested in pattern formation. As an example, uniform to fractal-like atomic growth with growth conditions of Molecular Beam Epitaxy³¹, coffee ring effects³², based on liquid evaporation conditions and investigation of different morphologies with dc- electrodeposition^{33,34}.

With this in perspective, we attempted to study how electrical factors may be utilized to program Conducting-Polymer Dendritic Interconnections and regulate their morphology. The modeling entails the spatiotemporal mapping of the electric field in the liquid as regulated by the electrical signal applied to the electrodes, motion of the constituent particles in the field, and electro-polymerization on both electrodes, resulting in variable morphologies under different conditions. The paper consists of three sections: (i) Proposed modeling methodology, (ii) Comparison of modeling results with experimental observations, and (iii) Modeling predictions.

Results and discussion

Proposed modeling methodology. Figure 1a represents the experimental setup of the electropolymerization technique, with a drop of aqueous electrolyte containing EDOT monomers, NaPSS electrolyte and benzoquinone oxidizing agent. Dendrites were grown by the bipolar alternating current with one electrode connected to time-varying signal and the other connected to the ground. Figure 1b depicts the morphology of PEDOT, with dendritic branches extending towards the opposite electrodes. Furthermore, imaging of the growing process reveals that particular particles may be traveling between the electrodes during the process. The characteristics of time-varying signals can be used to modulate the geometry of dendrites. One can achieve wire-like, fractal, engulfing nature of dendrites by playing with electrical parameters such as applied voltage, frequency, duty cycle and offset etc.¹⁴ (see Fig. 1c,d for a few examples). From the experimental perspective, one can only perform the imaging of the deposited conducting polymer morphology occurring on the electrodes. In order to model the experimental phenomena, herein, we simulate a simplified version of the electrodeposition problem on the electrode considering the necessary ingredients. In the electropolymerization process, one can expect monomers to become oligomers and higher sizes, which can be carrying the charge and hence driven by the electric field. Alternatively, one can consider the motion of concentration limited PSS⁻ moving with the electric field, activating the growth of PEDOT on the electrodes. Irrespective of the identity of charge carrier (which is not clearly known), one can consider generic charge carriers represented as charged moving particles in the simulations. Further, the arguments of the model would be valid for systems in which the nature of charge is opposite; in such a scenario, the deposition would occur on the opposite electrodes, maintaining similar morphologies. The advantage of the generic nature of the particles in the simulations makes the modeling applicable

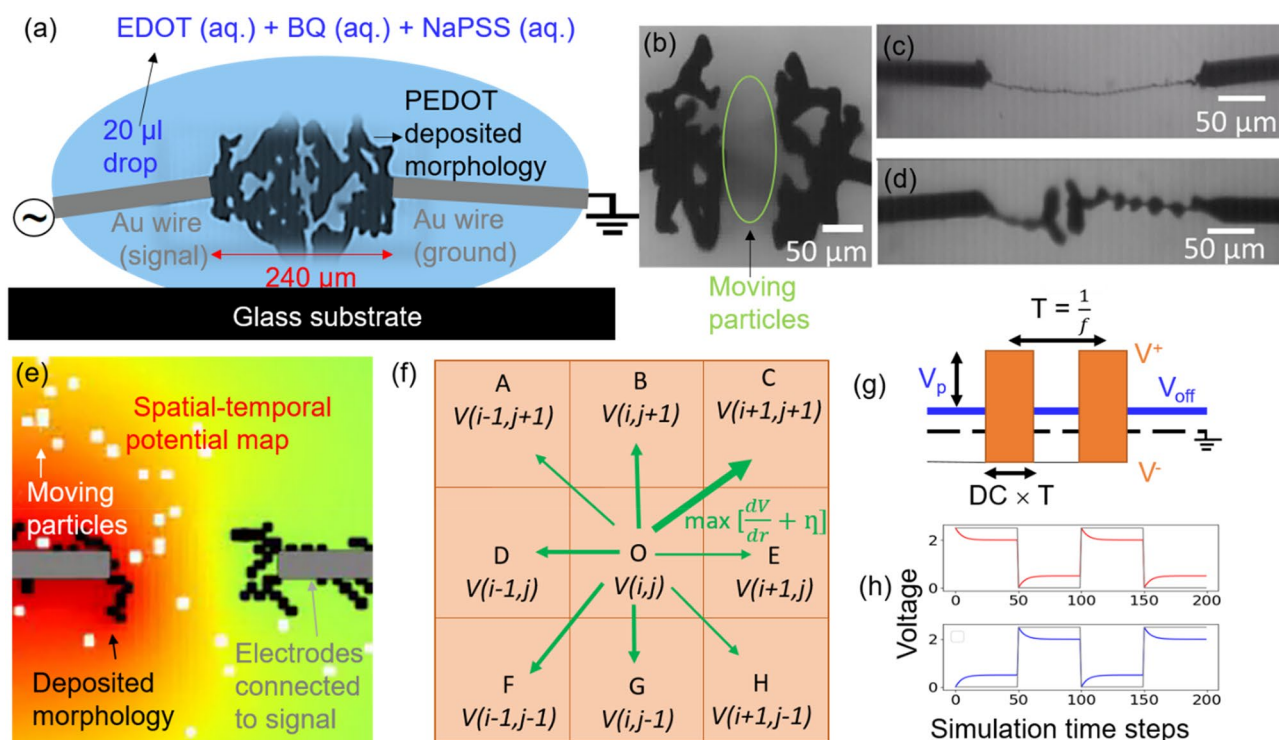


Figure 1. (a) Experimental setup for bipolar electro-polymerization of PEDOT consisting of an aqueous drop containing monomers of PEDOT (EDOT), benzoquinone (BQ) as an oxidizing agent, and sodium polystyrene sulfonate (NaPSS) as electrolyte and dopant for the dendritic microstructures. A specific periodic signal is applied on one of the Au wire electrodes, while the other Au wire electrode is at the ground. (b) Optical image of PEDOT morphology during the growth process (extracted from the video). The green circle region represents the particles movement between the electrodes. (c,d) Morphologies of polymerized materials formed for different electrical signals¹⁴. (e) Simulation geometry for electro-polymerization by considering motion and attachment of particles on the electrodes. The complete box represents the liquid, gray lines represent the electrodes connected to a specific signal, the white points represent the moving particles, and black points represent the polymerized particles on the electrodes. The spatiotemporal potential map is evaluated based on the applied waveform and modified electrode, simulation parameters are listed in Table 1. (f) The motion of a particle is driven by combined contribution of scattering and electric field motion. The particle is made to move in any direction with the probability based on effective forces. (g) Parameters of the signal applied on the electrodes. (h) With the voltage signal (shown in gray), the voltage experienced at the dielectric surface is calculated based on capacitive-resistance time scales (shown in blue and red).

Experimental parameter (corresponding value)	Modeling parameter (corresponding value)
Electrode spacing (240 µm)	20 pixels
Threshold voltage of electro polymerization (V_A) = 3.5 V	Threshold voltage of attachment (V_A) = 2 units
Charging time constant of double layer	Charging time (t_c) and Discharging time scale (t_d) = 5 simulation time units
Growth time scale (1 s)	100 Simulation time steps
Frequency of signal (Hz)	$(100 \times \text{Simulation time steps})^{-1}$
20 µL drop size	$150 \times 150 \text{ pixels}^2$
Charge particle size	1 pixel
Concentration of moving charged particles (unknown) 10 mM of EDOT and (BQ) in 20 µL drop	Number of particles (N) = 50
Completion of growth: spacing between extreme points becoming zero	Spacing between extreme points is lesser than 8 pixels
Particle scattering due to fluid interaction	Random noise = 0.3

Table 1. Simulation parameters used in the study compared with the corresponding experimental values.

to electro-polymerized materials grown by different species. The parameters of the applied signals applied on the electrodes can control the potential in the liquid. Further, the particles in the liquid phase can be expected to have several particle-particle and particle-fluid forces affecting the motion. Thus, one needs to consider the following ingredients in the model (1) potential distribution variation in the liquid due to time varying signal, (2) motion of particles governed by electrical parameters and various fluid interactions, and (3) electro polymerization of the conducting polymer on the electrode.

For the electro-polymerization, the two electrodes are biased with AC signal, with $2V_p$ being peak to peak voltage, D being duty cycle (0.5 for symmetrical pulse) and V_{off} being DC voltage offset. The potential map in the liquid can be calculated based on Laplace equation $\nabla^2 V = 0$ by defining the voltage signal as the boundary conditions on the electrodes. The particle motion located at x, y, z can be written in terms of electric drift, viscous stress and stochastic scattering as:

$$m \left(\frac{d^2x}{dt^2} + \frac{d^2y}{dt^2} + \frac{d^2z}{dt^2} \right) = -q \frac{\partial V(x, y, z, t)}{\partial x} + \frac{\partial V(x, y, z, t)}{\partial y} + \frac{\partial V(x, y, z, t)}{\partial z} - \frac{1}{\mu} \left(\frac{dx}{dt} + \frac{dy}{dt} + \frac{dz}{dt} \right) + \eta(t) \quad (1)$$

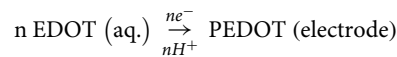
Here, q and m are respectively the charge and mass of the individual agglomerated particle. Based on Stock's relation, the mobility of the particle (μ) depends on particle radius, r and viscosity of liquid, ν which are material specific parameters as $\mu = \frac{1}{6\pi\eta r}$. The $\eta(t)$ has a Gaussian probability distribution with correlation function $\langle \eta_i \eta_j \rangle = 2 \mu k_B T_p \delta_{ij} \delta(t - t')$ with i and j being components, k_B as Boltzmann constant and T_p as the temperature³⁵. The above equation can be used to compute the concentration $C(x, y, z, t)$ of particles based on electric field and stochastic scattering. With NaPSS as electrolyte, electrochemical double layer (EDLA) is formed on the electrode with ions of PSS⁻ on the anode and Na⁺ on the cathode with assumed $R-C$ time constant of τ and voltage across double layer as V_D . Consider V_A and V_B being the potential on the surface of dielectric double layer on which further deposition takes place. The variation in potential during a pulse, for different $t' \in (0, T)$ can be written as:

For t'

$$V_A(t') = V_{off} + V_p - V_D \left(1 - e^{-\frac{t'}{\tau}} \right). \quad (2)$$

$$V_B(t') = V_D \left(1 - e^{-\frac{t'}{\tau}} \right) \quad (3)$$

Consider a charged particle at location $P(x, y, z)$ close to electrode A. The oxidation of this charge carrier depends on the voltage difference between the charge carrier, $V(x, y, z, t)$ and the EDLA, V_A considering threshold voltage, V_T . The sticking probability (S) in this case is represented as sigmoidal function with α a material-electro polymerization specific parameter, controlling the increase in sticking per unit voltage difference. Further, the rate of sticking depends on the local concentration of charged EDOT oligomer particles near the electrodes.



The sticking probability, $S_A(t')$ per particle can be written as

$$S_A(t') = \frac{1}{1 + e^{-\alpha(V_A(t') - V(x, y, z, t) - V_T)}} \quad (4)$$

Rate of growth, $R_A(t)$ depends on the concentration of EDOT in the neighborhood of electrode $C_A(t)$ and the sticking probability, $S_A(t')$ as

$$R_A(t) = \frac{1}{1 + e^{-\alpha(V_A(t') - V(x, y, z, t) - V_T)}} C_A(t) \quad (5)$$

With similar arguments, for $t' > D$ the rate of deposition on electrode B, $R_B(t)$ depends on potential at the dielectric layer.

$$V_A(t') = V_{off} + V_D \left(1 - e^{-\frac{t'-D}{\tau}} \right) \quad (6)$$

$$V_B(t') = V_p - V_D \left(1 - e^{-\frac{t'-D}{\tau}} \right) \quad (7)$$

$$S_B(t') = \frac{1}{1 + e^{-\alpha(V_B(t') - V(x, y, z, t) - V_T)}} \quad (8)$$

$$R_B(t) = \frac{1}{1 + e^{-\alpha(V_B(t') - V(x, y, z, t) - V_T)}} C_B(t) \quad (9)$$

As discussed, the formation of dendritic patterns is influenced by several parameters, including particle concentration, dielectric and charge properties, fluid–fluid and fluid-particle interactions, and chemical and thermodynamics influencing the electro-polymerization process. The majority of these important properties, however, cannot be measured directly during the experiments, and so their values cannot be plugged into the model. Furthermore, the experiments span a range of time and distance scales involving a growth time of ~ 100 s with a pulse width of ~ 1 ms and electrode spacing of ~ 240 μm with particle sizes of few nanometers. To have one to one mapping of the experimental problems, one might need to model the potential map of 3D box of mm dimension, containing Avogadro number of particles (10 mM monomer concentration), and studying the motion and sticking of individual particles for an order of 10^6 (1000 Hz for 500 s) duty cycles, which is not computationally feasible for parameters study. As a result, we evaluated a simplified version of the problem by inserting relevant components into the model and studying the evolution of dendritic morphology by altering the electrical and related parameters one at a time. For better readability, 100-simulation time steps is treated as 1 s, yielding $(100 \times \text{Simulation time steps})^{-1}$ as f_0 . Thus, if the signal's time-period is a simulation time units, the frequency of the signal is $\frac{100}{\alpha} f_0$. For further miniaturized experimental settings including submicrometer electrode spacing, which has yet to be experimentally explored, the modeling can be one to one mapped. As a result, the given generic model will aid in understanding the generality of the process as well as the qualitative nature of the type of morphological variation with individual parameter change. Figure 1e shows the proposed model with two bipolar metal electrodes shown in gray, and charge particles moving in the liquid shown in white. The codes are designed on python for convenience with the computational expensive function of potential calculation written in Fortran language utilizing F2PY interface. The electrodes are biased with the AC signal and spatiotemporal potential map based on the iterative solution of Laplace equation:

$$V(x, y, t) = \frac{1}{8} [V(x-1, y-1, t) + V(x-1, y, t) + V(x-1, y+1, t) + V(x, y-1, t) + V(x, y+1, t) + V(x+1, y-1, t) + V(x+1, y, t) + V(x+1, y+1, t)] \quad (10)$$

With voltage of electrodes as boundary conditions defined by the signal. The particles' evolution is simulated based on a model that considers collective contributions of both field-effect electrodynamic drift and scattering (see Fig. 1f). Consider a particle is at O and it would be experiencing unequal electrical fields in all directions and stochastic force. At a short time scale, water can no longer be treated as a continuous fluid, and molecular motion due to thermal fluctuations influences the particle trajectory. To introduce this random value of force, stochastic term $\eta(t)$ is introduced into the treatment. The velocity-dependent viscosity drift is ignored for simplicity. For the modeling, we have used the noise values of arbitrary scale, accounting for the contribution of stochastic force on particles in contrast to electric field-based deterministic force. The force experienced by a particle at O towards X can be written as:

$$F(O \rightarrow X) = k\Delta V_{O \rightarrow X} + \eta * \text{rand}() \quad (11)$$

The constant, k is assumed unity as it depends on mass, charge, and spacing between the pixels which are constant throughout the experiments. Thus the particle would move in the direction where the collective drift based on both these effects (electrical-field assisted and thermally activated) would be higher. The probability of the motion is made proportional to the normalized value of drift along the direction with c being proportional-ity of constant.

$$P(O \rightarrow X) = c \times \frac{\max(F(O \rightarrow X))}{\sum_p F(O \rightarrow X)} \quad (12)$$

Since particles would be attracted towards the anode, and repelled by the cathode, thus their transience between both electrodes is ensured by the time varying nature of the voltage signal, according to the time constant of the monitored phenomenon and the frequency range of the applied signal (see Fig. 1g). During the experimental conditions, 10 mM EDOT is utilized for 25 μL of solution accounting for ~ 35 μg of available EDOT, while the EDOT consumption (for dendrites obtained at 5 V) is ~ 9 μg . For simplicity, we have assumed constant particle density. In the simulations, particles that happen to leave the boundaries are made to enter from the opposite direction at random positions to maintain constant concentration conditions ensured in the experimental setup. During the motion of particles with the passage of time, the moving particles can happen to come near the electrode and once it comes near the electrode, it can polymerize and permanently attach to the electrode. Further, the potential value incorporates the drop in voltage at the double layer of the electrode with specific time constant as shown in Fig. 1h, with red and blue colors in contrast to the square signal shown with gray. The probability of particle-electrode attachment is made finite at a location where the particle electrode distance is < 2 pixels, enabling the contact from the straight and diagonal directions. Without enabling the diagonal direction motion, the morphology is seen to be having rectangular artifacts. Further, since the conducting polymer polymerization is enabled by oxidation only if the anode reach the given oxidation potential, particle's potential shall be taken into account in the probability of attachment to the anode. This is experimentally evidenced, with dendritic growth occurring above 3.5 V as voltage amplitude, and the density of the morphology increases with the amplitude. To introduce voltage dependent oxidation, the attachment probability is made sigmoidal function, considering the voltage difference between the location of the particle and potential of double layer, higher the difference more is the attachment probability (representing oxidation). The stuck particles are made permanently attached to the electrode, as the polymerization process is irreversible. Since the polymerized particles on the electrode are conducting by nature, the deposited particles are considered integral part of the electrode with further oxidation

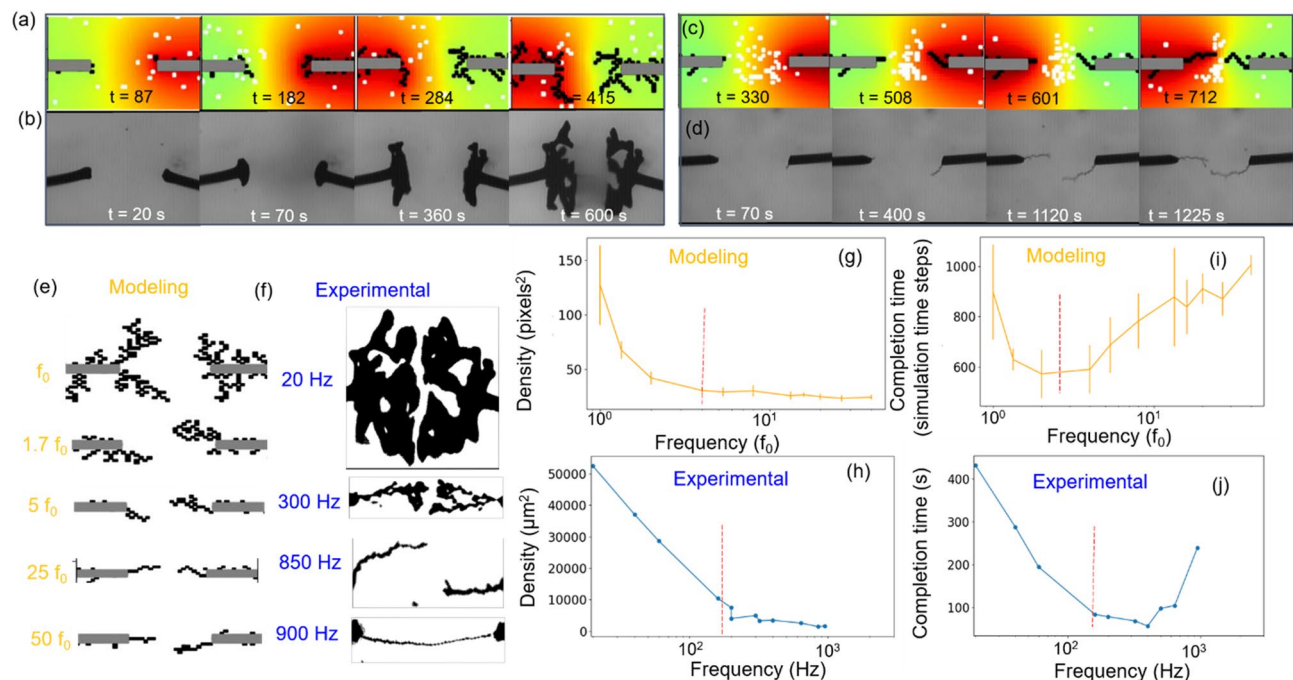


Figure 2. (a) Simulated images of dendrites growth process for signal frequency of $2.5 f_0$ (low frequency). (b) Experimental time lapse images of dendrite structure with signal voltage of 5 V and a low signal-frequency of 20 Hz. (c) Simulated images of dendrite morphology at signal frequency of $25 f_0$ (high frequency). (d) Time lapse images of dendrites obtained from experiments at a high frequency value of 850 Hz. (e) The dendrite morphologies based on modeling for signal frequencies, f_0 – $50 f_0$, here f_0 is defined in terms of simulation time steps of 100. (f) The microscopic binary images of dendrites morphologies obtained under variable frequency conditions ranging from 20 to 900 Hz¹⁴. (g) Variation in the density values of modeled morphologies at different electrical signal frequencies. (h) Variation in 2D projected density for experimental morphologies. Variation in completion time for (i) modeled dendrites and (j) experimental dendrites.

(attachment) on the dielectric surface occurring on the modified electrode surface (no voltage drop across the dendritic structure is taken into account in the model). The potential is recalculated based on the modified electrode geometry, and time varying signal on the electrode. The remaining particles in the liquid are simulated to move in the modified spatial–temporal potential field with the possibility of attachment on the modified electrode with the passage of time, enabling further growth of the polymer morphology. The polymer growth sensitively depends on the motion trajectory and attachment process, both regulated by the electrical conditions. Thus, versatility in the morphology can be seen based on electrical parameters. Supporting Information represents the flow chart of the methodology employed. (Supplementary Figure S1) To quantify the dendritic growth, the density of the morphology is evaluated based on deposited area on both the electrodes. The completion time of the process is defined to quantify the kinetics of the growth and are considered when two dendrites are very close to each other. A term asymmetry is defined to compare dendrites' morphologies originating from both the electrodes, with the value corresponding to the ratio of dendrite with high density to lower density. The minimum possible value of 1 corresponds to complete symmetrical structure. The error bars are calculated based on multiple simulations utilizing similar conditions and random seed values. The different random seed values changes the initial distribution of particles and random variable in the stochastic process. It should be noted that though in a real situation, the charge particles might be having negligible size as compared to the electrode spacing, and particle size may be variable, however, due to computational simplicity and cost restrictions, we assume the monomer or charge particle to have size of 1 pixel (1/20th of electrode spacing = 12 μm), and other length and time scale also based on simulation parameters. The present modeling parameters might be closer to the experimental system if one would be performing these experiments at much miniaturized conditions. Herein, we qualitatively, compare the model prediction with the experimental findings and predict the growth process in unexplored experimental conditions.

Comparison of modeling results with experimental observations. Figure 2a and Supplementary Video S1 show the growth process observed from modeling prospective with a low frequency of $2.5 f_0$ and 50% duty cycle and zero offset. The morphology advances towards the opposite electrode with several branches making a fractal structure. Figure 2b and Supplementary Video S2 represent a typical growth process obtained at experimental conditions of 5 V, 20 Hz, 50% duty cycle and zero voltage offset. The growth process takes 600 s, with initiation of growth in both the electrodes, followed by diameter growth and fractal-like morphology growing towards the counter electrode. Furthermore, we see particle motions between the electrodes in the experimental video, which is consistent with the modeling assumption of particles moving between the

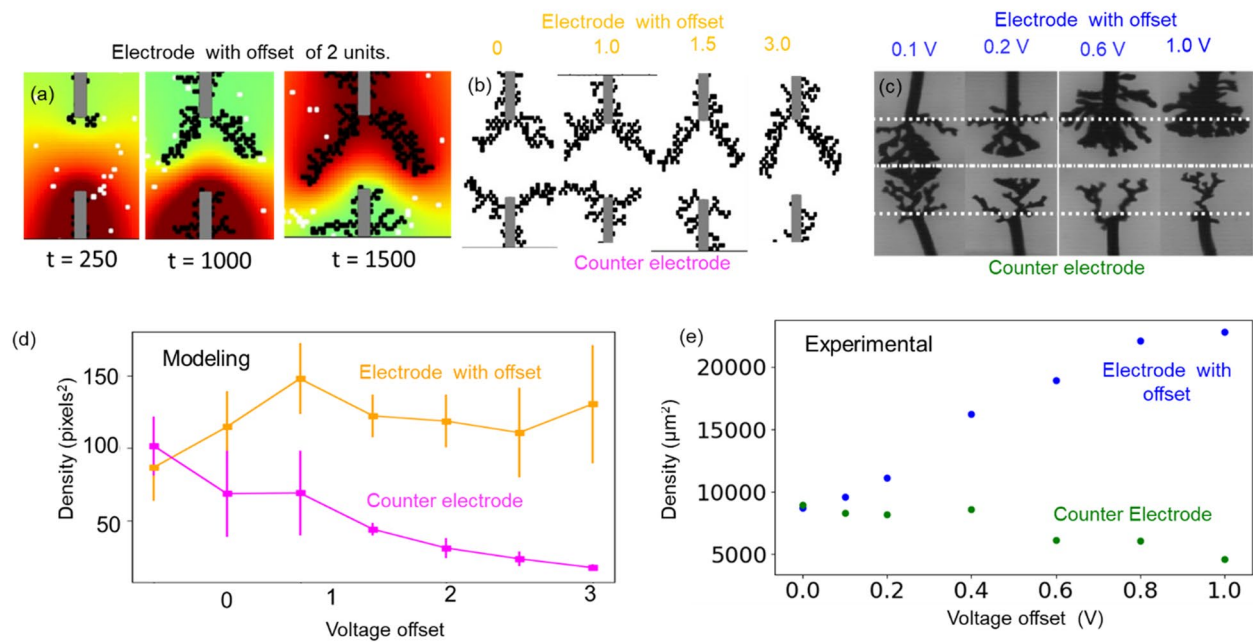


Figure 3. (a) The growth process of dendrites along with spatio-temporal map for voltage offset of 2 voltage units, demonstrating higher attraction of particles towards the electrode with offset. (b) Modeling images of morphologies for voltage offset of 0–3 voltage units. (c) Experimental images of dendrites morphologies at voltage offsets of 0.1–1 V¹⁴. (e) Dendrite density comparison for the modeling images for the electrode with offset (shown in orange) and counter electrode (shown in magenta). (e) Dendrite density comparison for the experimental images for the electrode with offset (shown in blue) and counter electrode (shown in green).

electrodes. However keeping the conditions same, and only increasing the signal frequency one ends up having wire like growth for increased signal frequency ($25 f_0$). Growth starts from one end followed by growth from other electrode and moving towards each other. In the modeling, (Fig. 2c and Supplementary Video S3) we find that at increasing frequency, the particles tend to localize in the center of the electrodes vibrating minimally with low time period (high frequency) signal. The restricted particles' motion forces the growth only at the extreme tip of the dendrite, rather than in any other location, offering wire like morphology with the passage of time. Figure 2d and Supplementary Video S4 show the experimental growth of dendrites at higher frequency (850 Hz) resembling the modeling growth process. Note that, the drastic change in fractal-to-wire-like growth cannot be trivially investigated in the experiments, given the distribution of moving particles in the liquid phase. Figure 2e illustrates the images of dendrites obtained for a range of frequencies (f_0 – $50 f_0$), the morphology is fractal and dense for f_0 , the morphology becomes thin and less dense with increasing value of frequency, and becomes wire like at very high frequencies. The simulation well matches the experimental observations as shown in Fig. 2f, as morphologies are fractal-like and very dense at 20 Hz, become less branchy and less dense with increasing frequency till 300 Hz, and become wire-like thereafter (see 850 Hz and 900 Hz). In Fig. 2g, we plot the variation in the density of modeled dendrite morphologies obtained at different frequencies. One observes two regimes: (i) the decrease in density with increasing frequency from f_0 to $4 f_0$, and (ii) saturation of density thereafter. In the experiments (Fig. 2h) as well, it is observed that density drops systematically from 20 to 300 Hz, while it saturates at a specific value from 300 to 900 Hz. It is observed that the completion time in modeling and experiments (Fig. 2i,j) both show similar nature; the completion time decreases with increase in frequency in regime I, while it increases in regime II. From the modeling we see that, in regime I, the increase in frequency helps in concentrating the particles near the center of electrodes. The high particle concentration increases the probability of dendrite growth and in turn decreases the completion time. However, in regime (ii) i.e. at very high frequency, the particles are dragged almost at the complete center of electrodes, vibrating minimally at low time-periods (high frequency). The restricted motion of these particles reduces the growth probability, and in turn slows down the process.

Next, we studied the effect of voltage offset, defined as a time invariant (DC) voltage component introduced in the applied periodic signal. Figure 3a shows the dendritic growth process with voltage offset of 2 units on the top electrode. An increased dendrite density is observed at the electrode that experience a positive voltage contribution by the voltage offset. The reason for this behavior can be explained based on increased density of particles and higher probability of attachment. Figure 3b,c compares the morphologies obtained from the modeling and the experimental methodologies at variable voltage offsets. The voltage offset increases asymmetry in both experiments and modeling. Figure 3d represents the systematic variation in the asymmetry with the increase in voltage offset for modeling images for electrode with offset (shown in orange) and counter electrode (shown in magenta). The similar trend is observed in the experimental studies¹⁴ (Fig. 3e), wherein the density on

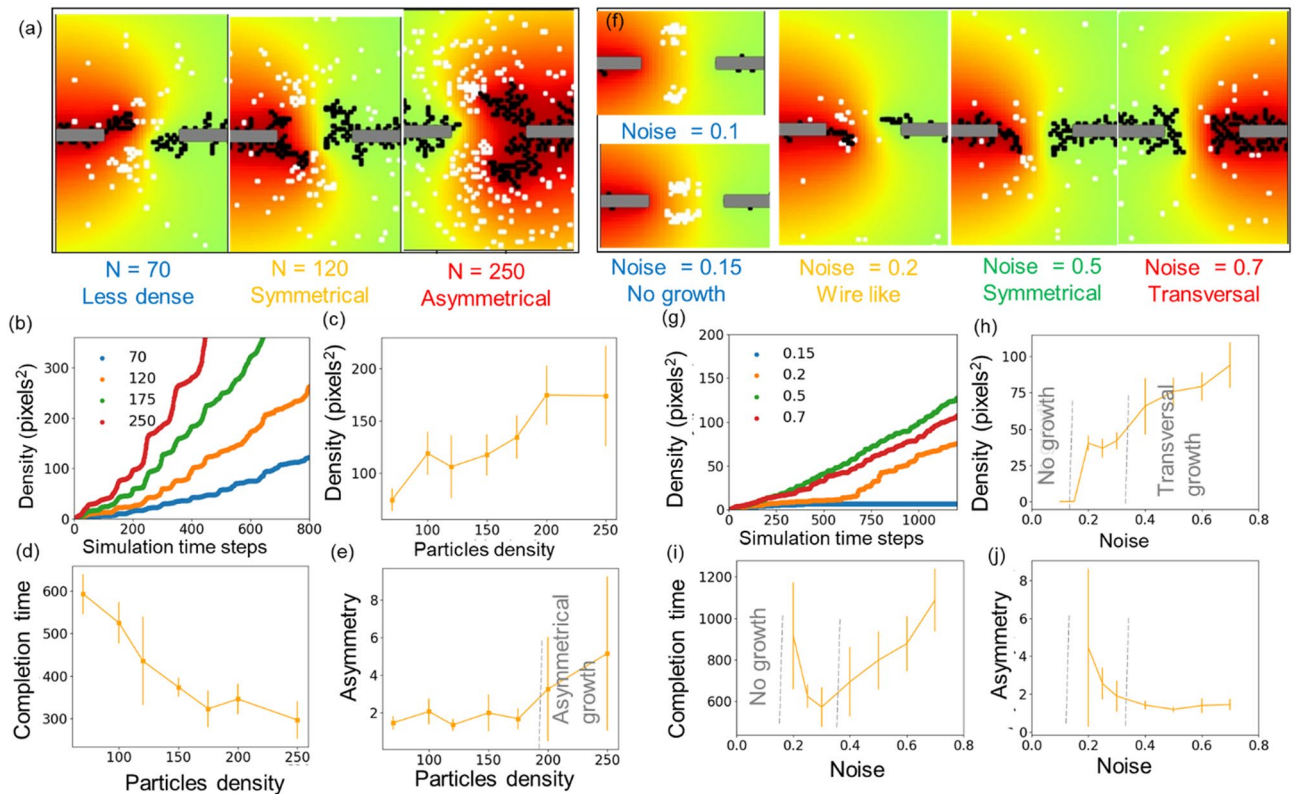


Figure 4. Effect of simulation parameters on the growth process. **(a)** The dendrites obtained at variable particle density $N = 70$, 120 and 250 . **(b)** The growth process for variable particle density. **(c)** The density of dendrites before being close to each other. **(d)** The variation in completion time with increase in particles density and **(e)** asymmetry parameter compared for dendrites obtained for different particle densities. **(f)** Various morphologies at increasing value of noise (η). **(g)** The time evolution of dendrites' density for variable noise values. **(h)** The density of dendrites before completion and **(i)** corresponding completion time for variable noise values. **(j)** Asymmetry parameter compared for dendrites obtained at different noise values.

the electrode with offset (blue) increases while the density on counter electrode (green) decreases. In this way, the simplified model with few parameters can explain the morphologies obtained for different electrical signals.

Modeling predictions. Next, we studied parameters others than the voltage signal affecting the growth process of dendrites, which have not yet been systematically studied by experimentalists so far, and could be important points while designing the future experiments.

The monomer concentration is an important aspect in experiments that affects dendritic growth. Figure 4a shows the dendritic growth at increasing particle densities, demonstrating very distinct morphologies for different particle densities: (i) wire-like for $N = 70$, (ii) fractal and symmetrical at $N = 120$, and (iii) asymmetrical at $N = 250$. The findings are consistent with the experimental observations of Ohira et al. wherein, wire like dendrites were obtained in the reduced concentration by glass covering the region during bipolarization process³⁶. According to the simulation, this is due to more attachment events at large particle densities. However, at very high particle density, the structure becomes asymmetrical, despite having similar applied electrical conditions on both electrodes. Because even minor noises initiate growth in any of the electrodes, which operate as the nucleating center, and generate a cascade effect that triggers attachments of surrounding particles for additional growth. Many particles can adhere to the nucleating centers in a short time interval with increased particle density. As a result, excessive particle density might result in uneven growth and a winner-takes-all situation caused by noise. We have tried several initial distribution of particles, the error bar in Fig. 4h corresponds to multiple simulations. The error bar is minimal for lower particle densities, indicating their repeatability for initial distribution and stochastic process. The error bar, on the other hand, is substantially larger for simulations with greater particle densities, demonstrating the sensitive role of initial particle distribution and stochastic effects similar to *butterfly effect*. The time evolution of the growth process shown in Fig. 4b strengthens the claim as the growth is uniform for lower particle densities, while the growth process becomes fast, erratic and steps like for higher particle densities, manifesting the growth of several particles in a small interval. As shown in Fig. 4c, increasing particle density increases the possibility of attachment and hence density, which rises from $N = 70$ to $N = 200$ and saturates further. The growth rate can be quantified in terms of completion time as shown in Fig. 4d, it drops systematically from $N = 70$ to $N = 175$ and nearly becomes constant further. It is observed that the asymmetry value (a parameter used to compare dendrites' morphologies originating from both the electrodes) is

below 2 for dendrites $N = 70$ to $N = 150$, while the value rises significantly further with an asymmetry value above 4 for $N = 250$. (Fig. 4e) Thus, without any asymmetry in electrical parameters, one can end up in asymmetrical structures based on intrinsic growth processes with higher particle densities.

The motion of the particles is regulated by the electric field and thermally activated random motion (scattering). To understand the impact of scattering as a random contribution in the dendritic growth, the growth has been studied at different values of noise (η) under constant signal conditions. If we see the effect of noise on the morphologies (Fig. 4f), at very low noise ($\eta < 0.2$), there is no growth on any of the electrodes, with the increasing noise the growth turns to wire like ($\eta = 0.2$), and with medium noise the growth is bulk fractal structure ($\eta = 0.5$). On the other hand, for very high noise ($\eta = 0.7$), the growth starts occurring on the electrode wire in the transversal direction. The reasons for these effects can be explained based on the difference in particle distribution at variable noise levels. Due to the relatively higher value of the electric field at low noise levels, the particles are solely governed by the field, since the signal changes the polarity based on the periodic signal, hence the particles concentrate near the center. At very low noise, the particles are frozen in the mid of electrodes ($\eta < 0.2$), leading to no growth. With increasing contribution of the noise, particles can move from the center towards the electrode. At $\eta = 0.2$, only a few particles can reach the electrode, it is similar to the case of less concentration (say $N = 70$) studied previously, and hence wire-like growth is manifested. The increase in noise ($\eta = 0.5$) increases the particle density and hence fractal structure is obtained. However, at very high noise, the motion is not controlled by the field, and high density of particles get available throughout the system, increasing the transversal growth on the electrode wires. The growth process of wire ($\eta = 0.2$), plotted in Fig. 4g shows that the wire growth takes a certain threshold time to begin with. The dendrite density and completion time plots (Fig. 4h,i) also show distinct regimes: with no growth for low noise ($\eta < 0.2$), high variability in the growth time and asymmetry for medium noise = 0.2, a reduction in completion time for medium noise ($\eta = 0.2$ to 0.3) because the particles can easily approach the electrodes, and an increase in completion time for high noise ($\eta = 0.3$ –0.7). Figure 4j demonstrates that asymmetry is notably high at $\eta = 0.2$ which is the lowest noise required for growth, then reduces and saturates more as the value of noise increases.

As a result, variations in the value of noise (which, as previously discussed, is dependent on particle velocity and temperature) can result in a variety of states. Because particle mobility is influenced by particle shape and particle-solvent interaction, different monomers may result in different morphological morphologies, which is an important consideration for experiments throughout the optimization process. At high concentration, the particle concentration can also play a role in converting wire-like growth to bulk fractal-like growth and asymmetrical growth, which should be considered while experimenting with concentration in the optimization process. Furthermore, the information on the error bars can be used to determine the reproducibility of pattern formation under certain environments. Apart from the neuromorphic engineering community, the investigation can be an important contribution to various other domains wherein such interconnections and morphological shapes control their functionalities^{23–30}. The approach can also be explored for patterning applications³⁷ and locomotion of conducting objects with similar techniques^{38,39}. The modeling can also be translated to problems involving wireless electro-polymerization^{16,40}. Since we used generic charged particles in the modeling, the model and its findings would also be important to inorganic electrochemical depositions^{34,35,41}. Future work can be done with non-equal mesh size for potential determination to have the fine resolution in potential map near the dendrites. Currently, due to different time scales and length scale of simulations as compared to experiments, we are not able to provide one-to-one mapping. Future work could attempt in relating the modeling parameters to the experimental units. The modeling can also be extended for network-based simulations by introducing multiple electrodes in the modeling. Currently, we have shown the simulations for periodic signals, the approach can also be applied to non-periodic time series for neuromorphic applications. We anticipate that the current modeling underpinnings and inferences from the modeling studies will be important in analyzing and optimizing electrode designs and electrical signals for future neuromorphic devices.

Conclusion

In conclusion, we have developed a mesoscale model to understand and optimize the electro polymerization technique as a bottom-up strategy for neuromorphic computation and other applications. The model involves consideration of the spatial–temporal potential mapping for the time-varying signal across the electrodes, motion of the charged particles in the electric field and, attachment of particles to the electrodes. The model attempts to explain the morphological differences for different electrical activities and experimental conditions, based on the nature of particles' distribution and their trajectories for electrical activities that have not previously been explored using modeling or microscopic techniques. The increasing frequency turns a bulky structure into a wire like morphology due to the preferential distribution of particles near the center of electrodes and tip of the growth. The voltage offset brings the asymmetry in the morphology due to asymmetry in the particle distribution due to constant potential. The effect of concentration shows different regions, which are wire like, bulky and asymmetrical at increasing concentration values due to the increased time scale of the growth process. The effect of scattering can also have a huge impact leading to no-growth, wire like growth, symmetrical growth and transversal growth at increasing value of the scattering due to the reduction of relative electric field contribution. The model can be explored for multiple electrodes, variable signals and making quantitative experimental comparisons after further modifications.

Received: 13 September 2021; Accepted: 21 March 2022

Published online: 16 April 2022

References

1. LeCun, Y., Bengio, Y. & Hinton, G. Deep learning. *Nature* **521**, 436–444 (2015).
2. Silver, D. *et al.* Mastering the game of Go without human knowledge. *Nature* **550**, 354–359 (2017).
3. Burr, G. W. *et al.* Neuromorphic computing using non-volatile memory. *Adv. Phys.: X* **2**, 89 (2017).
4. Roy, K., Jaiswal, A. & Panda, P. Towards spike-based machine intelligence with neuromorphic computing. *Nature* **575**, 607–617 (2019).
5. Marković, D., Mizrahi, A., Querlioz, D. & Grollier, J. Physics for neuromorphic computing. *Nat. Rev. Phys.* **2**, 499–510 (2020).
6. Chklovskii, D. B., Mel, B. W. & Svoboda, K. Cortical rewiring and information storage. *Nature* **431**, 782–788 (2004).
7. Butz, M., Wörgötter, F. & van Ooyen, A. Activity-dependent structural plasticity. *Brain Res. Rev.* **60**, 287 (2009).
8. Tang, J. *et al.* Bridging biological and artificial neural networks with emerging neuromorphic devices: fundamentals, progress, and challenges. *Adv. Mater.* **31**, 1902761 (2019).
9. Gomez, A. N., Zhang, I., Kamalakar, S. R., Madaan, D., Swersky, K., Gal, Y. & Hinton, G. E. Learning sparse networks using targeted dropout. arXiv preprint [arXiv:1905.13678](https://arxiv.org/abs/1905.13678). (2019).
10. Jasinska, M. *et al.* Rapid, learning-induced inhibitory synaptogenesis in murine barrel field. *J. Neurosci.* **30**, 1176 (2010).
11. Waites, C. L., Craig, A. M. & Garner, C. C. Mechanisms of vertebrate synaptogenesis. *Annu. Rev. Neurosci.* **28**, 251 (2005).
12. Fosdick, S. E., Knust, K. N., Scida, K. & Crooks, R. M. Bipolar electrochemistry. *Angew. Chem. Int. Ed.* **52**, 10438 (2013).
13. Loget, G., Zigah, D., Bouffier, L., Sojic, N. & Kuhn, A. Bipolar electrochemistry: from materials science to motion and beyond. *Acc. Chem. Res.* **19**, 2513 (2013).
14. Janzakova, K. *et al.* Analog programming of conducting-polymer dendritic interconnections and control of their morphology. *Nat. Commun.* **12**, 1 (2021).
15. Chen, Z., Villani, E. & Inagi, S. Recent progress in electropolymerization methods toward one-dimensional conducting polymer structures. *Curr. Opin. Electrochem.* **6**, 100702 (2021).
16. Koizumi, Y. *et al.* Electropolymerization on wireless electrodes towards conducting polymer microfibre networks. *Nat. Commun.* **7**, 1 (2016).
17. Eickenscheidt, M., Singler, E. & Stieglitz, T. Pulsed electropolymerization of PEDOT enabling controlled branching. *Polym. J.* **51**, 1029 (2019).
18. Akai-Kasaya, M. *et al.* Evolving conductive polymer neural networks on wetware. *Jpn. J. Appl. Phys.* **59**, 060601 (2020).
19. Hagiwara, N., Sekizaki, S., Kuwahara, Y., Asai, T. & Akai-Kasaya, M. Long- and short-term conductance control of artificial polymer wire synapses. *Polymers* **13**, 312 (2021).
20. Ji, J. *et al.* Bipolar electrodeposition of organic electrochemical transistor arrays. *J. Mater. Chem. C* **8**, 11499–11507 (2020).
21. Cucchi, M., Kleemann, H., Tseng, H., Lee, A. & Leo, K. Structural evolution and on-demand growth of artificial synapses via field-directed polymerization. arXiv preprint [arXiv:2106.06191](https://arxiv.org/abs/2106.06191) (2022).
22. Janzakova, K., Ghazal, M., Kumar, A., Coffinier, Y., Pecqueur, S. & Alibart, F. Dendritic organic electrochemical transistors grown by electropolymerization for 3D neuromorphic engineering. *Adv. Sci.* 2102973 (2021).
23. Ryu, K. S. *et al.* Poly(ethylenedioxythiophene) (PEDOT) as polymer electrode in redox supercapacitor. *Electrochim. Acta.* **50**, 843 (2004).
24. Xu, P., Yu, B., Yun, M. & Zou, M. Heat conduction in fractal tree-like branched networks. *Int. J. Heat Mass Transf.* **49**, 3746 (2006).
25. Petko, J. S. & Werner, D. H. Miniature reconfigurable three-dimensional fractal tree antennas. *IEEE Trans. Antennas Propag.* **52**, 1945 (2004).
26. Nair, P. R. & Alam, M. A. Dimensionally frustrated diffusion towards fractal adsorbers. *Phys. Rev. Lett.* **99**, 256101 (2007).
27. Xiao, Y. *et al.* Pulse electropolymerization of high performance PEDOT/MWCNT counter electrodes for Pt-free dye-sensitized solar cells. *J. Mater. Chem.* **22**, 19919 (2012).
28. Bradley, J. C. *et al.* Creating electrical contacts between metal particles using directed electrochemical growth. *Nature* **389**, 268 (1997).
29. Villani, E. & Inagi, S. Mapping the Distribution of Potential Gradient in Bipolar Electrochemical Systems through Luminol Electrochemiluminescence Imaging. *Anal. Chem.* **93**, 8152 (2021).
30. Luczak, A. Spatial embedding of neuronal trees modeled by diffusive growth. *J. Neurosci. Methods* **157**, 132 (2006).
31. Brune, H., Romainczyk, C., Röder, H. & Kern, K. Mechanism of the transition from fractal to dendritic growth of surface aggregates. *Nature* **369**, 469 (1994).
32. Deegan, R. D. *et al.* Capillary flow as the cause of ring stains from dried liquid drops. *Nature* **389**, 827 (1997).
33. Qiu, T. *et al.* Self-organized synthesis of silver dendritic nanostructures via an electrodeless metal deposition method. *Appl. Phys. A* **81**, 669–671 (2005).
34. Sawada, Y., Dougherty, A. & Gollub, J. P. Dendritic and fractal patterns in electrolytic metal deposits. *Phys. Rev. Lett.* **56**, 1260 (1986).
35. Syed, A. Z. & Rienen, U. V. and Elter, P. Effects of Brownian Motion on Electrical Double Layer. *Biomed. Eng.* **58**, 000010151520134348 (2013).
36. Ohira, M., Koizumi, Y., Nishiyama, H., Tomita, I. & Inagi, S. Synthesis of linear PEDOT fibers by AC-bipolar electropolymerization in a micro-space. *Polym. J.* **49**, 163 (2016).
37. Zhou, Y. *et al.* Fabrication of one-dimensional polymer nanowires by templated bipolar electropolymerization promoted by electrophoretic effect. *Macromolecules* **53**, 8123 (2020).
38. Loget, G. & Kuhn, A. Electric field-induced chemical locomotion of conducting objects. *Nat. Commun.* **15**, 1 (2011).
39. Sequeira, C. A., Cardoso, D. S. & Gameiro, M. L. Bipolar electrochemistry, a focal point of future research. *Chem. Eng. Commun.* **2**, 1001 (2016).
40. Koefoed, L., Pedersen, S. U. & Daasbjerg, K. Bipolar electrochemistry—A wireless approach for electrode reactions. *Curr. Opin. Electrochem.* **2**, 13 (2017).
41. Allagui, A., Salameh, T. & Alawadhi, H. Dendritic CuO structures synthesized by bipolar electrochemical process for electrochemical energy storage. *J. Electroanal. Chem.* **750**, 107 (2015).

Acknowledgements

The authors wish to thank the European Commission: H2020-EU.1.1.ERC project IONOS (# GA 773228).

Author contributions

A.K. and F.A. conceptualized the study. A.K. performed the computational studies and processed the data. K.J. performed the experimental studies. All authors participated in the discussions. A.K. wrote the first draft. F.A. and S.P. edited the draft. Y.C., F.A. and S.P. supervised the work. F.A. provided the funding for the study.

Competing interests

The authors declare no competing interests.

Additional information

Supplementary Information The online version contains supplementary material available at <https://doi.org/10.1038/s41598-022-10082-6>.

Correspondence and requests for materials should be addressed to A.K.

Reprints and permissions information is available at www.nature.com/reprints.

Publisher's note Springer Nature remains neutral with regard to jurisdictional claims in published maps and institutional affiliations.



Open Access This article is licensed under a Creative Commons Attribution 4.0 International License, which permits use, sharing, adaptation, distribution and reproduction in any medium or format, as long as you give appropriate credit to the original author(s) and the source, provide a link to the Creative Commons licence, and indicate if changes were made. The images or other third party material in this article are included in the article's Creative Commons licence, unless indicated otherwise in a credit line to the material. If material is not included in the article's Creative Commons licence and your intended use is not permitted by statutory regulation or exceeds the permitted use, you will need to obtain permission directly from the copyright holder. To view a copy of this licence, visit <http://creativecommons.org/licenses/by/4.0/>.

© The Author(s) 2022