



**HAL**  
open science

## Comparison of brain vasculature network characteristics between wild type and Alzheimer's disease mice using topological metrics

Mohamad Haft Javaherian, Victorine Muse, Jean Cruz Hernández, Calvin Kersbergen, Iryna Ivasyk, Yiming Kang, Gabriel Otte, Sylvie Lorthois, Christopher B. Schaffer, Nozomi Nishimura

### ► To cite this version:

Mohamad Haft Javaherian, Victorine Muse, Jean Cruz Hernández, Calvin Kersbergen, Iryna Ivasyk, et al.. Comparison of brain vasculature network characteristics between wild type and Alzheimer's disease mice using topological metrics. *Neuroscience* 2016, Nov 2016, San Diego, United States. pp.1-2. hal-03660251

**HAL Id: hal-03660251**

**<https://hal.science/hal-03660251>**

Submitted on 5 May 2022

**HAL** is a multi-disciplinary open access archive for the deposit and dissemination of scientific research documents, whether they are published or not. The documents may come from teaching and research institutions in France or abroad, or from public or private research centers.

L'archive ouverte pluridisciplinaire **HAL**, est destinée au dépôt et à la diffusion de documents scientifiques de niveau recherche, publiés ou non, émanant des établissements d'enseignement et de recherche français ou étrangers, des laboratoires publics ou privés.



## Open Archive TOULOUSE Archive Ouverte (OATAO)

OATAO is an open access repository that collects the work of Toulouse researchers and makes it freely available over the web where possible.

This is an author-deposited version published in: <http://oatao.univ-toulouse.fr/>  
Eprints ID : 16609

**To cite this version :**

Haft Javaherian, Mohamad and Muse, Victorine and Cruz Hernández, Jean and Kersbergen, Calvin and Ivasyk, Iryna and Kang, Yiming and Otte, Gabriel and Lorthois, Sylvie and Schaffer, Christopher B. and Nishimura, Nozomi *Comparison of brain vasculature network characteristics between wild type and Alzheimer's disease mice using topological metrics.* (2016) In: Neuroscience 2016, 12 November 2016 - 16 November 2016 (San Diego, United States)

Any correspondence concerning this service should be sent to the repository administrator: [staff-oatao@listes-diff.inp-toulouse.fr](mailto:staff-oatao@listes-diff.inp-toulouse.fr)

**Topic:** C.02. Alzheimer's Disease and Other Dementias

**Support:** ERC Brain Micro Flow Grant GA 615102

NIH Grant AG049952

**Title:** Comparison of brain vasculature network characteristics between wild type and Alzheimer's disease mice using topological metrics

**Authors:** \*M. HAFT JAVAHERIAN<sup>1</sup>, V. MUSE<sup>1</sup>, J. C. CRUZ HERNÁNDEZ<sup>1</sup>, C. KERSBERGEN<sup>1</sup>, I. IVASYK<sup>1</sup>, Y. KANG<sup>1</sup>, G. OTTE<sup>1</sup>, S. LORTHOIS<sup>2</sup>, C. B. SCHAFFER<sup>1</sup>, N. NISHIMURA<sup>1</sup>;

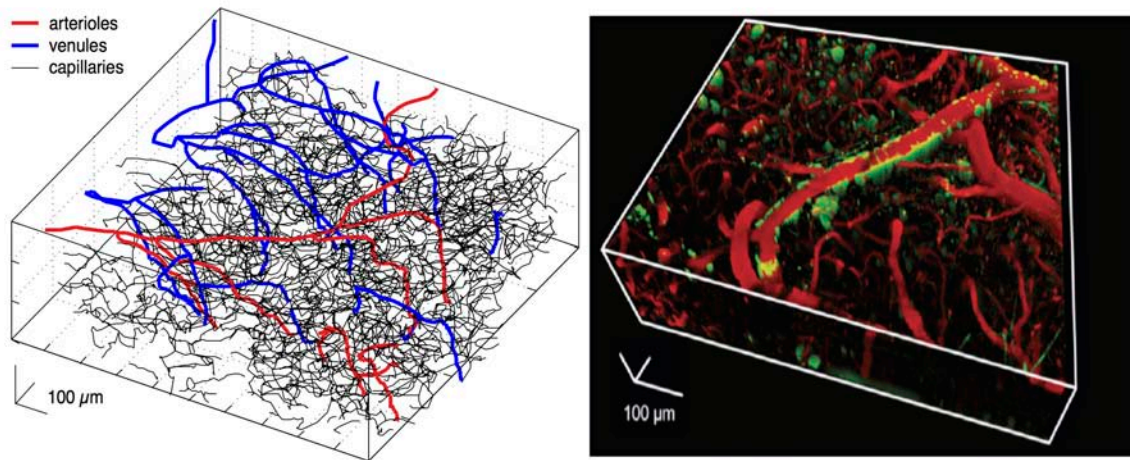
<sup>1</sup>Biomed. Engin., Cornell Univ., Ithaca, NY; <sup>2</sup>Inst. de Mécanique des Fluides de Toulouse, Toulouse, France

**Abstract:** There is a strong clinical correlation between Alzheimer's disease (AD) and microvascular disorders. In mouse models of AD, our lab has found blood flow dysfunction in brain capillaries, suggesting the need to study the function of vascular networks at the capillary level. However, the ability to deliver blood flow continuously to all neurons also depends on connections between vessels, requiring that we also characterize the topology of brain vascular networks. Here, we use graph theory and topological metrics to characterize the connectivity of brain capillary networks in AD and control mice.

We imaged cortical vascular networks using *in vivo* two-photon excited fluorescence microscopy in APP/PS1 (AD) and littermate, wild type (WT) mice (3 mice per group; ~1,100 vessels per mouse; Fig. a). Then, we represented the vascular network using graphs in which individual vessels are defined by the path they take through the tissue and their connections to other vessels (Fig. b).

Two metrics suggested interesting differences between WT and AD mice. The average shortest path length is the mean of the smallest number of vessel segments that joins all pairs of vessel junctions. In AD animals this metric was  $10.5 \pm 0.6$  vessels (mean  $\pm$  standard deviation), which was just 8% lower ( $p = 0.07$ , t-Test) than in WT animals ( $11.4 \pm 0.7$  vessels). The average clustering measures the tendency of vessels in the network to group together; higher numbers imply that vessels and their neighbors have more connections to each other. In AD animals this metric was 37% ( $p=0.09$ ) lower than WT animals. This metric is related to the redundancy of networks connections, which enables the vascular system to maintain blood supply even with occluded vessels, suggesting that capillary networks in AD mice are less connected and redundant than in WT animals.

In order to study how the brain blood flow is affected during the progression of AD, we developed a novel formalism to compare and describe the differences in the brain capillary vascular networks.



**Disclosures:** M. Haft Javaherian: None. V. Muse: None. J.C. Cruz Hernández: None. C. Kersbergen: None. I. Ivasyk: None. Y. Kang: None. G. Otte: None. S. Lorthois: None. C.B. Schaffer: None. N. Nishimura: None.