



HAL
open science

High-resolution observations in the western Mediterranean Sea: the REP14-MED experiment

Reiner Onken, Heinz-Volker Fiekas, Laurent Beguery, Ines Borrione, Andreas Funk, Michael P. Hemming, Jaime Hernandez-Lasheras, Karen J. Heywood, Jan Kaiser, Michaela Knoll, et al.

► To cite this version:

Reiner Onken, Heinz-Volker Fiekas, Laurent Beguery, Ines Borrione, Andreas Funk, et al.. High-resolution observations in the western Mediterranean Sea: the REP14-MED experiment. OCEAN SCIENCE, 2018, 14, pp.321-335. 10.5194/os-14-321-2018 . hal-03657448

HAL Id: hal-03657448

<https://hal.science/hal-03657448>

Submitted on 4 May 2022

HAL is a multi-disciplinary open access archive for the deposit and dissemination of scientific research documents, whether they are published or not. The documents may come from teaching and research institutions in France or abroad, or from public or private research centers.

L'archive ouverte pluridisciplinaire **HAL**, est destinée au dépôt et à la diffusion de documents scientifiques de niveau recherche, publiés ou non, émanant des établissements d'enseignement et de recherche français ou étrangers, des laboratoires publics ou privés.



Distributed under a Creative Commons Attribution 4.0 International License



High-resolution observations in the western Mediterranean Sea: the REP14-MED experiment

Reiner Onken¹, Heinz-Volker Fiekas², Laurent Beguery³, Ines Borrione⁴, Andreas Funk², Michael Hemming^{5,10}, Jaime Hernandez-Lasheras⁹, Karen J. Heywood⁵, Jan Kaiser⁵, Michaela Knoll², Baptiste Mourre⁹, Paolo Oddo⁴, Pierre-Marie Poulain⁶, Bastien Y. Queste⁵, Aniello Russo⁴, Kiminori Shitashima⁷, Martin Siderius⁸, and Elizabeth Thorp Küsel⁸

¹Helmholtz-Zentrum Geesthacht Centre for Materials und Coastal Research (HZG), Max-Planck-Straße 1, 21502 Geesthacht, Germany

²Wehrtechnische Dienststelle für Schiffe und Marinewaffen, Maritime Technologie und Forschung (WTD71), Berliner Straße 115, 24340 Eckernförde, Germany

³ALSEAMAR, 9 Europarc Sainte Victoire, 13590 Meyreuil, France

⁴Centre for Maritime Research and Experimentation (CMRE), Viale San Bartolomeo 400, 19126 La Spezia, Italy

⁵Centre for Ocean and Atmospheric Sciences, School of Environmental Sciences, University of East Anglia (UEA), Norwich Research Park, Norwich, NR4 7TJ, UK

⁶Istituto Nazionale di Oceanografia e di Geofisica Sperimentale (OGS), Borgo Grotta Gigante 42/c, 34010 Sgonico, Trieste, Italy

⁷Kyushu University, International Institute for Carbon-Neutral Energy Research (I2CNER), Fukuoka 819-0395, Japan

⁸Portland State University (PSU), P.O. Box 751, Portland, OR 97207-0751, USA

⁹Sistema de Observación Costero de las Islas Baleares (SOCIB), Parc Bit, Naorte, 07121 Palma de Mallorca, Spain

¹⁰Laboratoire d'Océanographie et du Climat, 4, Place Jussieu, 75005 Paris, France

Correspondence: Reiner Onken (reiner.onken@hzg.de)

Received: 12 October 2016 – Discussion started: 1 November 2016

Revised: 21 March 2018 – Accepted: 28 March 2018 – Published: 26 April 2018

Abstract. The observational part of the REP14-MED experiment was conducted in June 2014 in the Sardo-Balearic Basin west of Sardinia (western Mediterranean Sea). Two research vessels collected high-resolution oceanographic data by means of hydrographic casts, towed systems, and underway measurements. In addition, a vast amount of data was provided by a fleet of 11 ocean gliders, time series were available from moored instruments, and information on Lagrangian flow patterns was obtained from surface drifters and one profiling float. The spatial resolution of the observations encompasses a spectrum over 4 orders of magnitude from $\mathcal{O}(10^1 \text{ m})$ to $\mathcal{O}(10^5 \text{ m})$, and the time series from the moored instruments cover a spectral range of 5 orders from $\mathcal{O}(10^1 \text{ s})$ to $\mathcal{O}(10^6 \text{ s})$. The objective of this article is to provide an overview of the huge data set which has been utilised by various studies, focusing on (i) water masses and circulation,

(ii) operational forecasting, (iii) data assimilation, (iv) variability of the ocean, and (v) new payloads for gliders.

1 Introduction

The REP14-MED experiment was conducted in the framework of the Environmental Knowledge and Operational Effectiveness research programme of the Centre for Maritime Research and Experimentation (CMRE). REP14-MED was part of a series of experiments denoted by the acronym REP (Recognized Environmental Picture). The suffix “MED” stands for “Mediterranean”, in order to distinguish these experiments from another REP series conducted by the Portuguese Navy in the Atlantic. REP14-MED was led by CMRE, and the experiment was supported by 20 partners from six different NATO nations (Table 1). The activities at

Table 1. Partners of the experiment.

Acronym	Name	Country
ALSEAMAR	Architecture et Conception de Systemas Avantes	France
AMP	Area Marina Protetta Penisola del Sinis	Italy
CMRE	Centre for Maritime Research and Experimentation	NATO
DGA	Direction Générale de l'Armement	France
DSTL	Defence Science Technology Laboratory	United Kingdom
HLS	Heat, Light and Sound Research	United States of America
IAMC	Istituto per l'Ambiente Marino Costiero	Italy
IIM	Istituto Idrografico della Marina	Italy
ISMAR	Istituto di Scienze Marine	Italy
MARKDO	Marinekommando	Germany
MIT	Massachusetts Institute of Technology	United States of America
MWC	Maritime Warfare Centre	United Kingdom
NRL	Naval Research Laboratory	United States of America
OGS	Istituto Nazionale di Oceanografia e di Geofisica Sperimentale	Italy
ONR	Office of Naval Research	United States of America
SOCIB	Sistema de Observación Costero de las Islas Balears	Spain
PSU	Portland State University	United States of America
TWR	Teledyne Webb Research	United States of America
UEA	University of East Anglia	United Kingdom
UPMC	Université Pierre et Marie Curie	France
WTD71	Wehrtechnische Dienststelle für Schiffe und Marinewaffen, Maritime Technologie und Forschung	Germany

sea were conducted in June 2014 by the NATO Research Vessel *Alliance* and the Research Vessel *Planet* of the German Federal Ministry of Defence (Fig. 1), and comprised both oceanographic and acoustic observations. This article, however, describes only the oceanographic measurements which are the basis of several research papers published in the special issue “REP14-MED: A Glider Fleet Experiment in a Limited Marine Area” of *Ocean Science*. In addition, standard names are introduced which may be referred to by other papers related to REP14-MED, e.g. for sections, tracks, and moorings. The overall goal of REP was to develop and test methods for the rapid characterisation of the marine environment, and the particular objectives of REP14-MED were to

1. investigate water masses and circulation patterns off the west coast of Sardinia;
2. collect data for operational ocean forecasting, model validation, and the evaluation of forecast skill;
3. provide a data set for the development and comparison of different methods for data assimilation;
4. employ data from a fleet of gliders for a cost–benefit analysis;
5. conduct a generic experiment for the exploration of the variability of the ocean; and
6. test new payloads for gliders.

The selection of the experimental site was driven by the requirements of the acoustic experiments and the objectives defined above: the acoustic experiments required a wide shelf

area, and the operations of the glider fleet should take place in an area with little ship traffic and without strong boundary currents. Therefore, the waters off the west coast of Sardinia (western Mediterranean) were selected (Fig. 2). From a morphological point of view, this area is characterised by a wide continental shelf area, the width of which varies between about 40 and 80 km. The shelf ends at water depths between 150 and 200 m, followed by the continental slope which features several canyons. The deep-sea area belongs to the Sardo-Balearic Basin and exhibits water depths of up to 2800 m.

The general circulation of the western Mediterranean was comprehensively described by Millot (1999) and Robinson et al. (2008), and this picture was still valid at the beginning of the experiment. Accordingly, the mean surface circulation at the experimental site is mainly related to the inflow of “new” Modified Atlantic Water (MAW) from the Strait of Gibraltar by means of anticyclonic eddies shed by the Algerian Current (Ribotti et al., 2004; Testor and Gascard, 2005; Escudier et al., 2016). Another branch of “old” MAW, which mixed with the underlying water masses on its large-scale cyclonic circulation through the Tyrrhenian, Ligurian, and Balearic seas, comes probably from the west via the Balearic Current (García-Ladona et al., 1996). Just below the MAW, Winter Intermediate Water (WIW) follows the path of the MAW along its whole cyclonic path. WIW is formed in late winter in the northern and northwestern Provençal Basin and it is supposed that it also finds a direct way from the formation sites to the Sardo-Balearic Basin via mesoscale eddies. Levantine Intermediate Water (LIW) originates from the eastern Mediterranean, and the direct path to the experi-

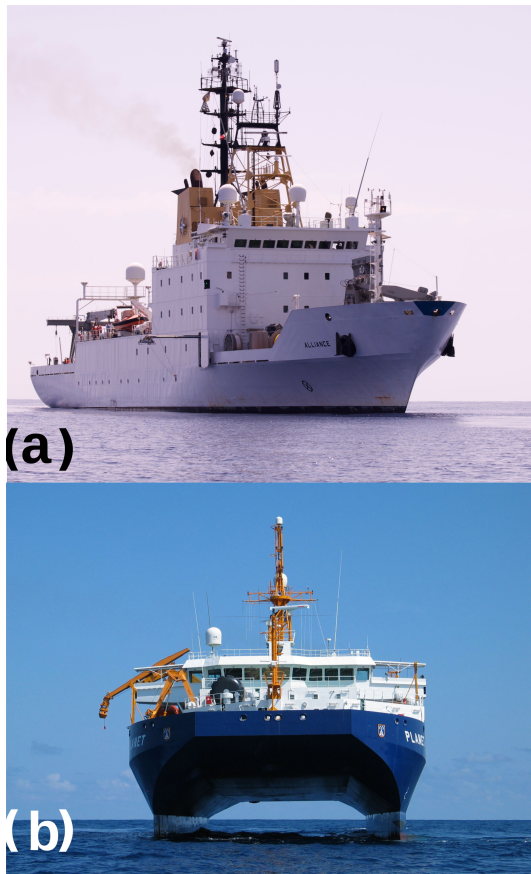


Figure 1. (a) NATO research vessel (NRV) *Alliance* and (b) RV *Planet*.

mental site is via the Sicily Strait and the Sardinia Channel and then northward around the southern tip of Sardinia. After exiting the Strait of Sicily, another LIW branch joins the abovementioned circulation paths of “old” MAW. Below the LIW, Western Mediterranean Deep Water and Bottom Water are found. Finally, the North Balearic Front (Testor and Gascard, 2003) represents the confluence zone between the waters coming from the south and the waters from the north; according to Fuda et al. (2000) and Olita et al. (2013), it is located between about 40 and 41° N.

The activities at sea took place within the red box indicated in Fig. 2 which is the so-called “observational domain”. In the west, it is bounded by the 7°15′ E meridian, and in the east by the Sardinian coast. The southern and northern boundaries are at 39°12′ and 40°12′ N, and the area size is approximately 60 nmi (nautical miles) × 60 nmi or 111 km × 111 km, respectively. A summary of the observations is given in Table 2.

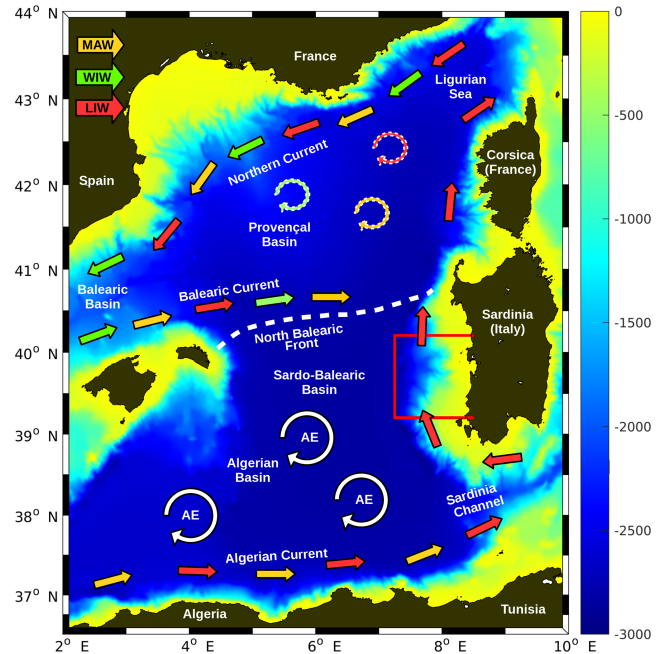


Figure 2. The large-scale circulation of the western Mediterranean as it was known before the REP14-MED experiment. White-dashed circles indicate notional mesoscale eddies. The red box is the observational domain. Algerian eddies are marked by AE. For the other acronyms, see the text.

2 Measuring systems

2.1 Shipborne systems

Both *Alliance* and *Planet* are survey ships equipped with the standard oceanographic measuring systems. Only those systems which were used for the oceanographic experiments will be described (for more details, see Onken et al., 2014). On *Alliance*, there were

- 2 × SBE CTD (conductivity–temperature–depth) probes with rosette samplers (for more details, see <http://www.seabird.com>, last access: 17 April 2018),
- 1 × SBE CTD probe with rosette sampler and optical sensors,
- 1 × SATLANTIC HyperPro optical profiler (<https://seabirdscientific.com/satlantic>, last access: 17 April 2018),
- 2 × towed ScanFish with dual CTDs (<https://www.eiva.com>, last access: 17 April 2018),
- 2 × RDI ADCPs (acoustic Doppler current profilers; <http://www.teledynemarine.com/rdi>, last access: 17 April 2018), 300 and 75 kHz,
- 1 × thermosalinograph (<http://www.seabird.com>, last access: 17 April 2018), and

Table 2. Summary of all observations. The variables names p , $p\text{CO}_2$, pH, T , S , U , and V refer to pressure, CO_2 partial pressure, pH value, temperature, salinity, zonal and meridional velocity, respectively. Only those variables are mentioned which are relevant for the articles in the special issue.

Instrument	Data type	Variables	June period	Track length (km)	Data volume	Remarks
Gliders	3-D trajectory	T , S , p , pH, $p\text{CO}_2$ *	8–23	3278	133 glider days 5731 profiles	
ScanFish	3-D trajectory	T , S , p *	21–23	365	535 profiles	resolution < 1321m
Thermosalinograph	2-D trajectory	T , S at 2.5 m depth	6–25	3158		resolution < 10m
Surface drifters	2-D trajectory	U , V , T	8–25		17 drifters	6 h sampling interval
Floats	2-D trajectory	U , V , T , S	8–25		1 float	within observational domain
	vertical profile	T , S	8–28		3 profiles	within observational domain
ICTD casts	vertical profile	T , S , p *	7–24		279 profiles	spatially crowded on Leg 2
uCTD casts	vertical profile	T , S , p	11–16		36 profiles	
CTD chain	vertical profile	T , S , p	11–14	722	> 100 000 profiles	resolution < 10 m
			21–23			
ADCP (ship)	vertical profile	U , V	7–25	5561	> 400 000 profiles	
Moorings	time series	T , S , U , V *	8–23			
Meteorol. obs.	time series		6–25			shipborne and on M1

* Additional parameters are available from these systems but they are beyond the scope of this article.

– ship meteorological sensor systems,

and on *Planet* there were

- 2 × SBE CTD probes with rosette samplers,
- 1 × OceanScience underway CTD probe (uCTD; <http://www.teledynemarine.com/oceanscience>, last access: 17 April 2018),
- 1 × towed CTD chain with 91 sensors 3.5 m apart (Sell-schopp, 1997),
- 1 × ADCP, 150 kHz, and
- ship meteorological sensor systems.

2.2 Gliders

A total of 16 gliders from different manufacturers were provided for launch during the experiment, of which 11 were used for the tasks described in this article. Another three were reserved for the acoustic experiments, and the remaining two served as backup:

- 9 × Slocum (CMRE; <http://www.teledynemarine.com/webb-research>, last access: 17 April 2018),
- 1 × Slocum (PSU),
- 1 × Slocum (WTD71),
- 3 × Seaglider (UEA; <https://www.km.kongsberg.com>, last access: 17 April 2018), and

- 2 × SeaExplorer (ALSEAMAR; <https://www.alseamar-alcen.com>, last access: 17 April 2018).

For further details and the technical specifications, see Table 3.

2.3 Surface drifters and profiling floats

In total, 17 surface drifters and two profiling floats were available:

- 9 × Albatros (<http://albatrosmt.com>, last access: 17 April 2018) MD03i surface drifters (CMRE),
- 3 × Albatros ODi-Solar surface drifters (CMRE),
- 5 × SVP (Lumpkin and Pazos, 2005) surface drifters (OGS),
- 2 × ARVOR-I profiling floats (OGS, <http://www.euro-argo.eu/Activities/Data-Management/Access-to-individual-float-data>, last access: 17 April 2018).

2.4 Moored instruments

Finally, CMRE provided in total six moorings, named W1, M1, M2, M3, M4, and M5:

- W1 is a Datawell Waverider buoy (<http://www.datawell.nl>, last access: 17 April 2018).
- M1 consisted of the central mooring $M1_{CTR}$ and a sideways extending appendage $M1_{APP}$ floating at the sea

Table 3. Specifications of the gliders provided for the experiment. Greta, Natalie, and SEA004 were deployed only during Leg 2 within the framework of the acoustic experiments; Laura and Sophie served as backup. For the specifications of most sensors, see the websites of the manufacturers in Sect. 2.

Name	Make	Rating (dbar)	Operator	Sensors and special properties
Clyde	Slocum	200	PSU	CTD, PAM*
Dora	Slocum	1000	CMRE	CTD (pumped), propeller
Elettra	Slocum	200	CMRE	2 × CTD (pumped and unpumped)
Greta	Slocum	200	CMRE	CTD, PAM*
Jade	Slocum	1000	CMRE	CTD (pumped), propeller
Laura	Slocum	200	CMRE	CTD
Natalie	Slocum	200	CMRE	CTD, PAM*
Noa	Slocum	1000	CMRE	CTD, Wetlabs puck
Sophie	Slocum	200	CMRE	CTD, 504 nm irradiance, Wetlabs puck
WTD71	Slocum	200	WTD71	CTD (pumped)
Zoe	Slocum	200	CMRE	CTD, 504 nm irradiance, Wetlabs puck
Fin	Seaglider	1000	UEA	SBE CT sail, O ₂ , 2 × pH/p(CO ₂)
Minke	Seaglider	1000	UEA	SBE CT sail, O ₂
Kong	Seaglider	1000	UEA	SBE CT sail, PAM*
SEA003	SeaExplorer	650	ALSEAMAR	GPCTD, O ₂ , Chl A, CDOM, Bs770nm
SEA004	SeaExplorer	650	ALSEAMAR	PAM*

*PAM: passive acoustic monitoring system.

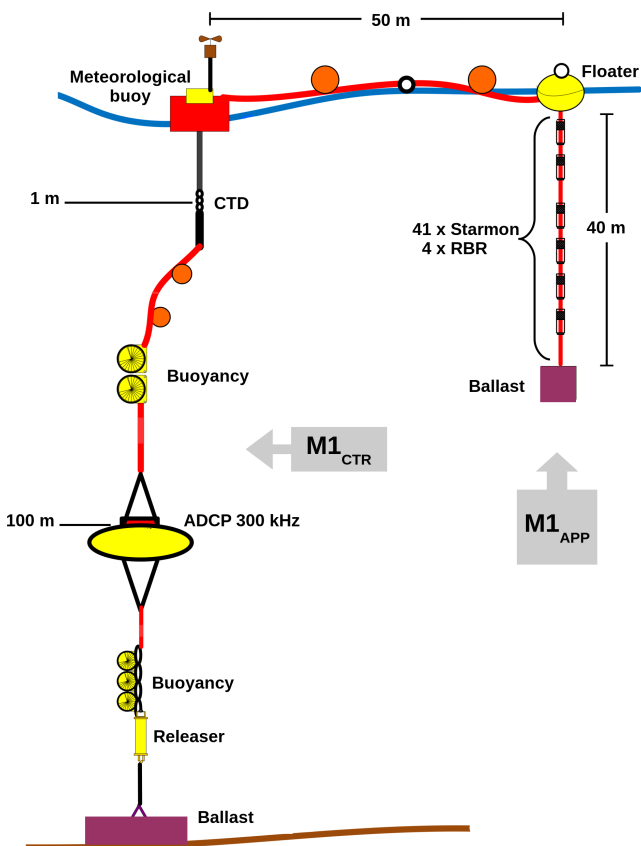


Figure 3. Design drawing of mooring M1. For explanations, see text.

surface (Fig. 3). M1_{CTR} was equipped with an upward-looking 300 kHz ADCP mounted at a nominal depth of 100 m below the sea surface, a CTD probe at 1 m depth, and a meteorological buoy at the surface (Table 4). M1_{APP} was connected by a 50 m long rope to M1_{CTR} and extended to about 40 m depth in the vertical direction. A total of 41 Starmon mini temperature recorders (<https://www.star-oddi.com>, last access: 17 April 2018) were densely spaced along the vertical cable in order to record temperature with high vertical resolution. In addition, four RBR data loggers (<https://rbr-global.com>, last access: 17 April 2018, last access: 17 April 2018) were mounted on the cable for determining the actual depth of the Starmons.

- M2, M3, M4, and M5 were “traditional” oceanographic subsurface moorings equipped with CTD probes and current metres. A diagram of the general design of such a mooring, in this case M3, is displayed in Fig. 4, and the vertical arrangement of measuring devices for all moorings (M1, M2, M3, M4, M5) is shown in Table 4.

3 Schedule

The experiments at sea were separated into three legs (Table 5). Leg 1 started on 6 June with the departure of *Alliance* and *Planet* from La Spezia (Italy) and Toulon (France), respectively, and was solely dedicated to oceanography. Both vessels conducted a so-called CTD “initialisation survey” which covered the entire observational domain at 10 km horizontal resolution. In addition, 11 gliders, six moorings, 17

Table 4. Details of the moorings. All times are UTC. RCM stands for the Aanderaa current metres of the RCM series (<http://www.aanderaa.com>).

	W1	M1	M2	M3	M4	M5
Longitude	8° 16.44' E	08° 16.22' E	08° 12.98' E	07° 57.65' E	07° 49.68' E	07° 35.39' E
Latitude	39° 30.71' N	39° 30.80' N	40° 05.98' N	40° 06.14' N	40° 06.36' N	40° 05.24' N
Water depth	150	150	150	700	1300	2100
Deployment	8 June 07:47	8 June 07:14	10 June 06:42	10 June 11:30	10 June 15:56	11 June 07:18
Recovery	20 June 13:28	20 June 13:55	23 June 14:10	23 June 11:47	23 June 08:45	23 June 06:06
0 m	Waverider	Meteo buoy				
1 m		CTD				
20 m				CTD	CTD	CTD
100 m				CTD	CTD	CTD
		ADCP 300 kHz	ADCP 300 kHz			ADCP 300 kHz
200 m				CTD	CTD	CTD
				ADCP 150 kHz	ADCP 150 kHz	RCM
500 m				CTD	CTD	CTD
				RCM	RCM	RCM
1000 m					CTD	CTD
					RCM	RCM
1500 m						CTD
						RCM

surface drifters, and two subsurface floats were deployed by *Alliance*. Leg 1 was finished at 00:00 UTC (Universal Coordinated Time) on 12 June and *Alliance* called port in Porto Torres (Sardinia) for the exchange of personnel.

During Leg 2 (12–20 June), all activities on *Alliance* were related to acoustic experiments which will not be discussed in this article. However, during this period of time, some limited data sets from short-term glider missions (not included in Table 5), CTD casts, and underway measurements are available for oceanographic analyses. At the same time, *Planet* continued with casts by lowered CTD (ICTD) and uCTD and measurements by the CTD chain.

After a short port call in Oristano (Sardinia, *Alliance* only), for another exchange of personnel, both vessels had a rendezvous for the intercalibration of their CTD probes on 21 June. Afterwards, so-called “validation surveys” were conducted for about 40 h until 23 June, using the ScanFish (*Alliance*) and the CTD chain (*Planet*) simultaneously on parallel tracks. Thereafter, *Planet* finished her field work and headed towards Palma de Mallorca. *Alliance* remained another day in the area for the recovery of all gliders and moorings, concluding the experiment on 25 June in La Spezia.

4 Observations

The purpose of all observations was to satisfy the objectives defined in the introduction, except for the optical stations and the deployments of the ARVOR-I floats which were conducted in the framework of another project and in support of the MedArgo programme (Poulain et al., 2007), respectively. In particular, CTD data from shipborne casts and glid-

ers and the underway measurements were applied for the investigation of water masses and circulation patterns (Objective 1). For Objectives 2, 3, and 4, all CTD data were used, and the ScanFish data sets were employed for the validation of model forecasts. The oceanographic and meteorological data of the M1 mooring served as the backbone for Objective 5, and new payloads for gliders (Objective 6) were tested on various gliders by means of passive acoustic monitoring systems and pH/ $p(\text{CO}_2)$ sensors on glider Fin (see Table 3). The data from the CTD chain are still under investigation. The surface drifter trajectories were included in the Mediterranean drifter database at http://nettuno.ogs.trieste.it/drifter/database_med/, last access: 17 April 2018, and the time series recordings on moorings M2–M5 have not yet been exploited.

4.1 CTD casts

In total, 256 ICTD casts were taken by both vessels (Fig. 5). The scheduled vertical extent of all casts was 1000 dbar or bottom depth (whatever was shallower) but a few casts, especially at the western boundary of the observational domain, reached greater depths in order to characterise the deep water masses. Casts taken during the deployment and recovery of moorings always reached the bottom, whereas those taken during the deployment and recovery of gliders were limited to 1000 dbar as the gliders could not measure deeper than this. Additionally, 23 CTD profiles down to 350 m were recorded for the calibration of the CTD chain, 36 profiles down to a depth of 550 m were obtained by the uCTD, and five profiles to about 150 m were carried out with a CTD probe equipped with optical sensors (Tables 2, 5).

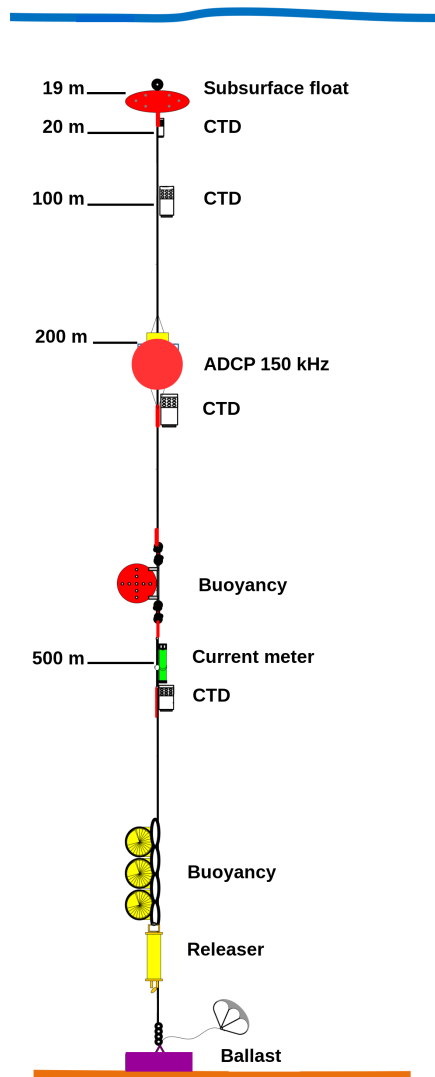


Figure 4. Design drawing of mooring M3. For explanations, see text.

(pressure rating > 650 dbar). Track G08 was occupied by two gliders (Dora and Minke) because Dora was a brand new glider equipped with a propeller drive and its performance should be compared with that of a conventional glider. All gliders except for Clyde and Fin accomplished their tasks satisfactorily until recovery on 23 June (Fig. 7b) while commuting up to five times between the eastern and western ends of their tracks. Clyde had to be recovered earlier than planned on 12 June because of a hardware malfunction and was never redeployed, and Fin had to be recovered on 10 June because of a software problem. However, Fin was redeployed successfully the following day. After recovery, no apparent bio-fouling was observed on any glider.

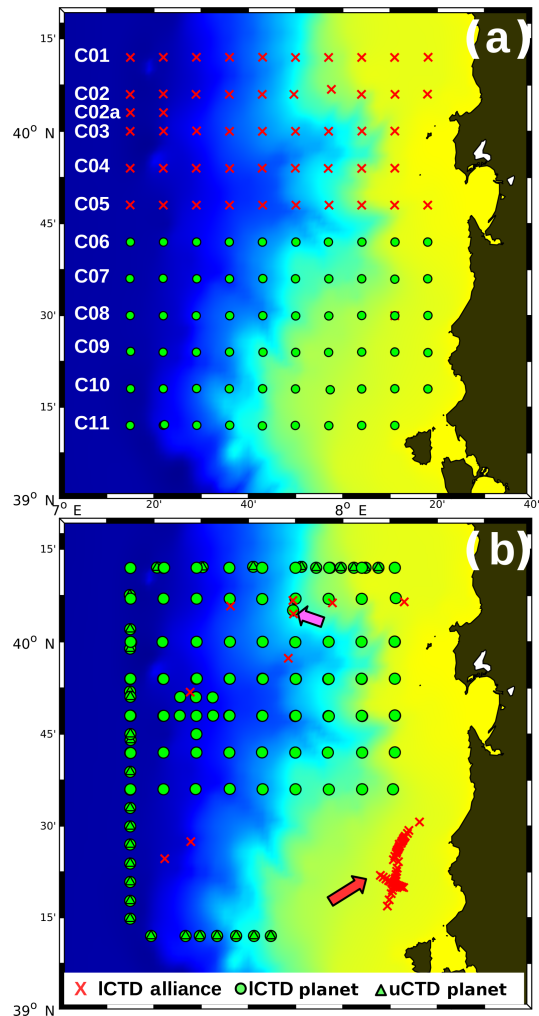


Figure 5. CTD casts taken during (a) Leg 1 and (b) Legs 2 and 3. Zonal sections in panel (a) are numbered C01–C11. The 46 CTD casts taken by *Alliance* in the framework of the acoustic experiments during Leg 2 are highlighted by the red arrow; the magenta arrow points to the position of the CTD intercalibration. Extra casts taken by *Planet* for the calibration of the CTD chain are not shown. The colour code for the water depth is the same as in Fig. 2.

4.3 CTD chain and ScanFish

The CTD chain towed by *Planet* came into operation twice, on 12–14 June (Fig. 8a) and 21–23 June, in sync with the ScanFish towed by *Alliance* as shown in Fig. 8b. The meridional distance between the zonal tracks in Fig. 8b is 10 km, and the zonal tracks are aligned with the zonal CTD sections (Fig. 5).

4.4 Optical stations

Optical measurements were carried out daily around local noon on 7–11 June. Each station consisted of an ensemble of vertical profiles with the free-falling HyperPro and

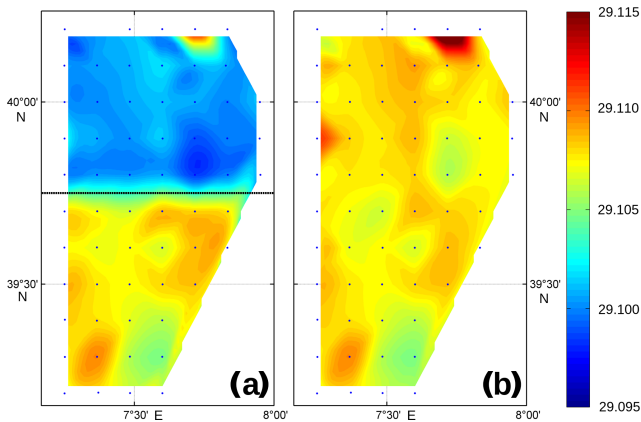


Figure 6. Potential density (kg m^{-3}) at 990 m depth (a) before and (b) after applying the salinity correction to the CTD casts taken during Leg 1. The positions of all casts are indicated by blue dots. All casts north of the dotted line were taken by *Alliance*; all casts south of that line were from *Planet*.

one cast down to about 150 m depth using the CTD probe equipped with optical sensors. For the position of the casts, see Fig. 9. Additional optical data are available from some gliders equipped with optical sensors and from the ScanFish.

4.5 Drifters and floats

During transit from La Spezia to the survey area, one ARVOR-I float was launched on 6 June near the eastern mouth of the Strait of Bonifacio in the Tyrrhenian Sea in support of the Argo programme and without any direct relevance to REP14-MED. A further 17 surface drifters and one more ARVOR-I float were deployed 8–11 June in the observational domain. The deployment positions are shown in Fig. 9.

4.6 Moorings

A total of six moorings were deployed 8–11 June at the positions shown in Fig. 9. W1 and M1 were recovered on 20 June, and M2, M3, M4, and M5 on 23 June.

4.7 Underway measurements

On *Alliance*, temperature and salinity at 2.5 m depth were recorded continuously by a thermosalinograph during the entire survey. At the same time, the 75 kHz ADCP acquired the three-dimensional velocity field under the vessel down to a depth of 653 m with a vertical resolution of 16 m. Usable data of the vessel-mounted 150 kHz ADCP on *Planet* were obtained 10–23 June only at depths below 80 m. The profiling depth varied between about 180 m during daylight and 280 m during the night (Knoll et al., 2015a). For the tracks of the vessels, see Fig. 10.

Continuous shipborne observations of meteorological parameters were recorded on both vessels. On *Alliance*, records of wind speed, wind direction, air temperature, air pressure, relative humidity, and wind gusts were made at three locations on the foredeck (starboard and port) and at the stern, whilst on *Planet*, wind speed and direction at different positions on the vessel, relative humidity, air temperature, air pressure, visibility, altitude of clouds, and rain were recorded with sensors at nine different locations within a height of 10–26 m. The seawater temperature was measured at 6 m depth. Additional records of various meteorological parameters are available from the meteorological buoy on top of mooring M1.

5 Complementary data

5.1 Weather and wave prediction models

For the entire experiment, weather analyses and forecasts of the COSMO (Consortium for Small-scale Modeling) atmospheric model were made available by the Italian Weather Service (Centro Nazionale di Meteorologia e Climatologia Aeronautica – CNMCA) in two different setups, COSMO-ME and COSMO-IT. COSMO-ME covered the entire Mediterranean Sea with a horizontal resolution of 7 km and provided 72 h forecasts. COSMO-IT encompassed Italy and the adjacent waters at a high resolution of 2.2 km but the forecast range was only 24 h. In addition, CNMCA also provided forecasts of the NETTUNO wave model for the entire Mediterranean.

5.2 Ocean circulation models

In order to assess the environmental conditions in the survey area and to support the efforts of the REP14-MED modelling community, the outputs of five ocean circulation models were downloaded routinely from the respective servers. Products of the Mediterranean Forecasting System (MFS) and the MERCATOR global model were provided via CMEMS (COPERNICUS Marine Environment Monitoring Service), WMED – a high-resolution model of the waters around Sardinia – was obtained from IAMC, WMOP (Western Mediterranean Operational Forecasting System) was produced by SOCIB, and finally the Extended Range Prediction System was provided by NRL.

5.3 Remote sensing

Derived sea surface temperature was collected during the experiment by the CMRE TeraScan satellite system from the polar-orbiting satellites POES and MetOp.

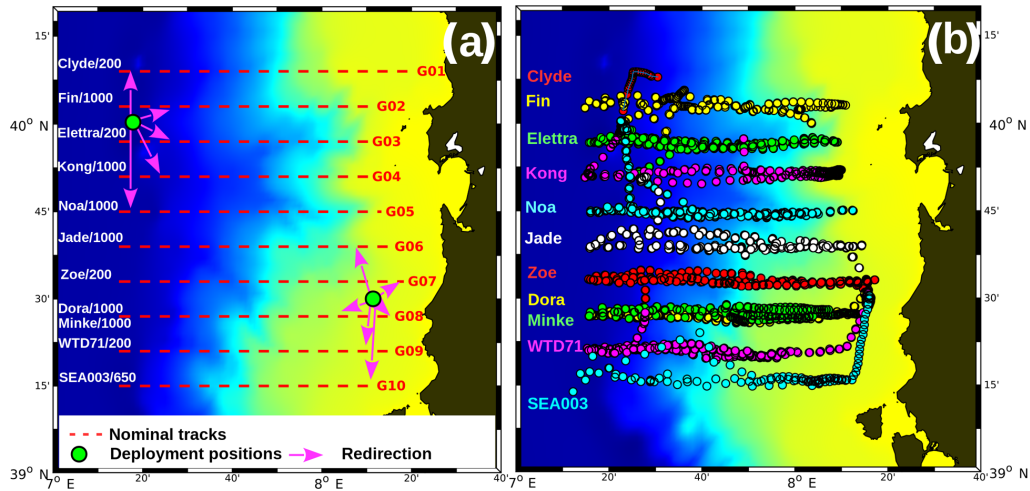


Figure 7. (a) Nominal tracks and deployment positions of all gliders launched during Leg 1. The names of the gliders are written at the western end of their respective tracks, and the number behind the name stands for the pressure rating in dbar. The gliders are redirected from the deployment positions to their nominal tracks. (b) Real tracks of all gliders for 8–23 June. The circles indicate the surfacing positions. The colour code for the water depth is the same as in Fig. 2.

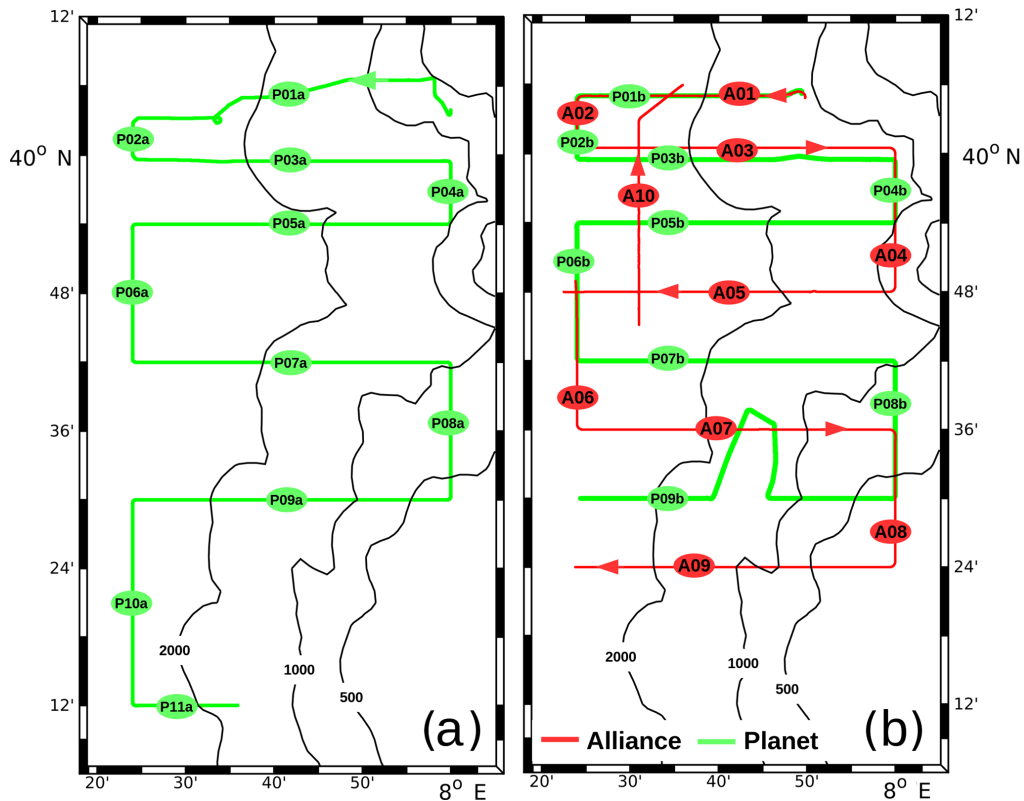


Figure 8. (a) CTD chain track of Planet during Leg 2. Tracks are numbered consecutively P01a–P11a. (b) CTD chain tracks P01b–P09b of Planet and ScanFish tracks A01–A10 of Alliance during Leg 3. Black lines indicate water depth (m).

5.4 Historical data

Historical data include temperature and salinity profiles extracted from the World Ocean Database 2013 (Boyer et al.,

2013) in a wider area surrounding the REP14-MED observational domain, and four CTD cruises conducted by IAMC 2001–2003 (Ribotti et al., 2004).

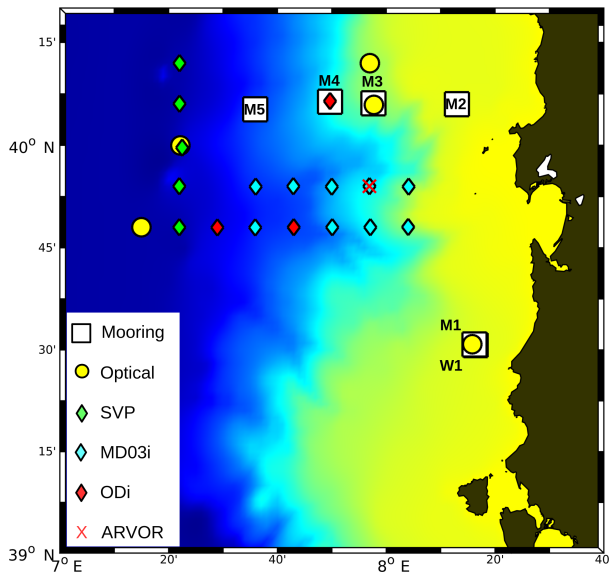


Figure 9. Positions of moorings, optical stations, and deployment positions of surface drifters (SVP, MD03i, and ODi are drifter types) and the ARVOR-I float. The colour code for the water depth is the same as in Fig. 2.

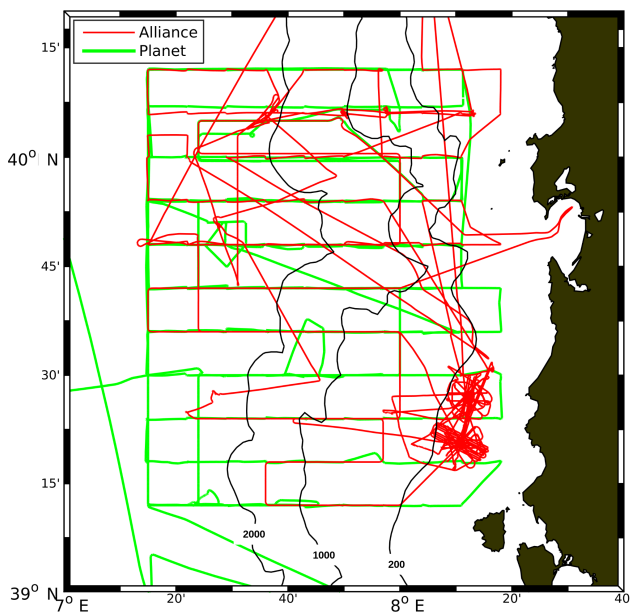


Figure 10. Ship tracks of *Alliance* and *Planet*. Black lines indicate water depth (m).

6 Discussion

This article describes the oceanographic surveys of the REP14-MED experiment. The description is restricted to the geographic and oceanographic settings of the survey area, the schedule, the employed measuring systems, the timing and the positioning of all observations, and the availability of complementary data. No observations are shown; this is

to avoid the anticipation of potential results of forthcoming publications.

The surveys undertaken at sea provide an extremely rich data set that can be used for multiple studies on different topics. The major advantage of the data set is its consistency, which was not affected by the handful of glitches experienced:

- Glider Clyde failed completely after 10 June. However, Clyde was fortunately positioned on track G01 and the malfunction did not impact the regularity of the entire glider track pattern.
- Glider Fin dropped out for about 1 day.
- On 23 June, *Planet* had to circumvent a fishing area while towing the CTD chain. This explains the northward excursion from track P09b in Fig. 8.
- Originally on mooring M1, a CTD probe was mounted directly at the sea surface but the recording of conductivity failed shortly after the deployment of the mooring.
- A total of 2 out of 40 thermistors in mooring M1 failed.

The objectives of the experiment as defined in the introduction have been addressed by nine scientific articles (including this one) which are assembled in a special issue of *Ocean Science*: using the data collected by the shipborne CTD probes, gliders, towed instruments, and vessel-mounted ADCPs, Knoll et al. (2017) investigated the hydrography and circulation patterns in the experimental area and compared them with previous knowledge. It turned out that the distribution of the water masses and the circulation resembled the classical picture as described by Millot (1999), but there were also significant differences: the temperature and salinity of MAW, LIW, and bottom water had increased compared to the observations during the last decade. By contrast to previous observations, LIW occupied the whole trial area; no LIW vein tied closely to the Sardinian coast was found south of 40° N. Within the MAW, an unusually cold and saline eddy was observed in the southern trial area while extremely low saline surface water entered the area in the southwest towards the end of the experiment. An anticyclonic WIW eddy was identified which may confirm the existence of a direct route of WIW from its formation region in the Ligurian Sea and in the Gulf of Lion to the observational site. Geostrophic transports were in reasonable agreement with the ADCP measurements. Within the MAW, northward transport was observed on the shelf while the currents over the slope headed to the south. Northward transport of LIW was predominantly observed offshore.

Concerning operational forecasting, a relocatable ocean prediction system was applied in hindcast mode to the survey data (Onken, 2017a). More than 6000 temperature and salinity profiles originating from the glider fleet and shipborne CTD probes were assimilated, and the forecasts were verified

against observations from the ScanFish tows (Fig. 8b). In a sensitivity study, the forecast skill score (as defined by Murphy, 1993) was determined in dependency of various assimilation parameters, and it was shown that the score increased with increasing forecast range. Moreover, it was demonstrated that the vast number of observations can be managed by the applied objective analysis method without data reduction, enabling timely forecasts with acceptable goodness even on a commercially available personal computer.

Different schemes were adopted to assimilate the survey data. While Onken (2017a, b) applied objective analysis, a hybrid variational-ensemble scheme was developed by Oddo et al. (2016), and Hernandez-Lasheras and Mourre (2018) used a local multimodel ensemble optimum interpolation (EnOI). The hybrid scheme of Oddo et al. (2016) corrects both the systematic errors introduced from the initialisation, lateral and surface boundary conditions, and model parameterisation, and improves the representation of small-scale errors in the background error covariance matrix. An ensemble system was run offline for further use in the hybrid scheme, generated through perturbation of the assimilated observations. The results of four different experiments were compared. While the reference experiment had no systematic error correction, the other three experiments accounted for error corrections, combining the static and the ensemble-derived errors of the day. It was shown that the hybrid scheme reduced the mean absolute errors of the temperature and salinity misfits by 55 and 42 %, respectively, versus statistics arising from standard climatological covariances without systematic error correction. Hernandez-Lasheras and Mourre (2018) presented the results of different simulations, assimilating temperature and salinity profiles from shipborne CTDs and gliders from REP14-MED, along with observations of sea surface temperature, sea level anomaly, and Argo profiles over the whole western Mediterranean Sea. The objectives were to explore the performance of the EnOI data assimilation scheme in ingesting both large-scale data and dense profile observations over a reduced area, and to compare the performance of the CTD initialisation survey versus different configurations of glider fleet sampling including up to eight vehicles. Results show the capacity of the system to ingest both types of data, leading to improvements in the representation of all assimilated variables. These improvements persist during the 3-day periods separating two analyses. However, the system presents some limitations in properly representing the anticyclonic eddy observed around 50 m depth in the southern part of the domain, due to the reduced vertical extension of the eddy, which is smoothed out by the vertical model error covariances provided by the ensemble. A verification of the forecasts using independent measurements from shipborne CTDs and the ScanFish shows that the simulations assimilating initial CTD data reduce the error by 30 to 40 % with respect to the simulation without data assimilation. In the glider-data-assimilative experiments, the forecast error is reduced in terms of the root mean square error as the num-

ber of vehicles increases. The simulation assimilating CTDs outperforms the simulations assimilating data from one to four gliders. A fleet of eight gliders provides a similar performance as the 10 km spaced CTD initialisation survey in these experiments. Moreover (Andreas Funk, personal communication, 2018; not included in the special issue), the incremental strong constraint 4D-Var technique was applied. Both profiles from shipborne CTDs and gliders are assimilated, and the impact of different sets of observational data on prediction quality is estimated. Convergence issues of the assimilation scheme are analysed and overall performance is compared to other data assimilation techniques.

A cost-benefit analysis of gliders versus traditional platforms was presented by Russo et al. (2018): traditional observing platforms, i.e. research vessels, are expensive in terms of both human and financial resources, and are not able to provide comprehensive observations in challenging areas like the polar oceans. By contrast, observations on global scales are obtained from satellites but only for the sea surface. Hence, the underwater environment still remains largely unobserved. Autonomous underwater platforms promise to provide an affordable solution for filling the observation gap. In particular, marine gliders are demonstrating their capabilities for long missions by crossing the ocean basins up to increasing depths. Long periods of endurance at sea are achieved at the cost of sacrificing glider speed, and this fact generates issues for several possible utilisations of the observations collected by gliders. A partial solution was represented by a fleet of coordinated gliders during the REP14-MED sea trial where two research vessels and 11 gliders sampled simultaneously the same limited area. This offered the opportunity for conducting a comparison between the two data sets aiming to assess several aspects, including capability to detect oceanographic features, improvements of operational forecasting skill, and economic costs.

The time series records of mooring M1 enabled an experiment for the exploration of the variability of the ocean. Onken (2017a) employed the Regional Ocean Modeling System (ROMS; Shchepetkin and McWilliams, 2005) in offline-nested mode to assess the sensitivity of the forecast skill of mixed-layer properties to initial conditions, boundary conditions, and mixing parameterisations. All forecasts were validated against the M1 thermistor records. The initial and lateral boundary conditions were provided by the Mediterranean Forecasting System (MFS; Tonani et al., 2014) and by the MERCATOR global ocean circulation model (Dréville et al., 2008). Nesting ROMS in MERCATOR and updating the initial conditions through data assimilation provided the best agreement of the predicted mixed-layer properties. Further improvement was obtained if the predicted atmospheric forcing fields were melded with real observations, and by the application of the $k-\omega$ vertical mixing scheme (Wilcox, 1988) with increased vertical eddy diffusivity. The predicted temporal variability of the mixed-layer temperature was rea-

sonably well correlated with the observed variability, while the modelled variability of the mixed-layer depth exhibited only agreement with the observations near the diurnal frequency peak. For the forecasted horizontal variability, reasonable agreement was found with observations from a ScanFish section but only for the mesoscale wave number band; the observed submesoscale variability was not reproduced.

New payloads for gliders were tested during the experiment: glider Clyde was equipped with two hydrophones and an experimental pH/ $p(\text{CO}_2)$ sensor was for the first time installed on glider Fin. Although Clyde failed about 36 h after its deployment, the acoustic records were intact and complete because they were anyway limited to approximately 23 h. The equipment used and the analysis of the data obtained are discussed by Küsel et al. (2017). Sperm whale regular clicks as well as dolphin clicks and whistles were identified. Cross-correlating clicks recorded on both hydrophones allowed for the estimation of the bearing of clicks and realisation of animal tracks. Two dual pH/ $p(\text{CO}_2)$ sensors were mounted on Fin – one stand-alone pair and another one integrated into the glider electronics. However, due to quality issues, only the data of the stand-alone pH sensor could be used, and the article of Hemming et al. (2017) is restricted to that one. During the deployment, pH was sampled over a period of 12 days. The vertical resolution of the pH sensor was good, but stability was poor and the sensor drifted in a non-monotonous fashion. An offset was applied to remove the sensor drift, reducing the spread of the data by approximately two-thirds. Additional corrections decreased the apparent pH variability by a further 13 to 31 %. Sunlight caused a sensor pH decrease in surface waters around local noon, highlighting the importance of shielding the sensor from light in future deployments. The corrected pH is presented along with other parameters measured by the glider. Maxima of pH were identified close to the depth of the summer chlorophyll maximum, and higher pH was associated with saltier LIW.

7 Conclusions

In June 2014, and in the framework of the REP14-MED experiment, a huge oceanographic data set was collected by two research vessels, 11 gliders, and other measuring systems. The large volume of the data set, its consistency, and the quality were the stimulus for various scientific studies which are published in the special issue “REP14-MED: A Glider Fleet Experiment in a Limited Marine Area” of this journal. This article provides an overview of the logistics of the survey and the observations at sea, and highlights the major findings of related articles published so far. All articles comply with the objectives defined above and address the following subjects:

- water masses and circulation off the west coast of Sardinia;

- operational forecasting and model validation;
- different methods for data assimilation;
- variability of the ocean;
- cost–benefit analysis of gliders; and
- new payloads for gliders.

In the publications of the special issue, most of the defined objectives were addressed, but the richness of the observations has by far not yet been exploited adequately:

- The “wavelength” of the sawtooth-like glider path is between $\mathcal{O}(100\text{ m})$ and $\mathcal{O}(1\text{ km})$, depending on the water depth. Hence, the along-path resolution is on the same order of magnitude as that of submesoscale features and would enable corresponding analyses. Moreover, the alternating occupation of the tracks by deep and shallow gliders may enable model studies which assess the dynamical impact of the subthermocline flow on the overall circulation pattern. For instance, the data of all available gliders may be assimilated in a control run, while in another run the glider data below approximately 200 m depth are ignored. The huge amount of glider data also advances assimilation experiments aimed to test the efficiency of different sampling patterns (Oke et al., 2015) in terms of subsampling or “super observations” (Lorenc, 1981).
- The original intention of the ScanFish surveys (Fig. 8) was to provide a quasi-synoptic validation data set for model forecasts. As the wavelength of the undulating device is around 1 km (in deep water), the data are also suitable for investigations of submesoscale processes.
- The temporal resolution of the CTD chain is extremely high at about 3 s which is equivalent to a spatial resolution of less than 10 m at a tow speed of 4–5 kn. This would allow very detailed studies of submesoscale features in the transition regime to the microscale.
- The subsurface moorings M2, M3, M4, and M5 were equipped with CT probes and current metres (partly upward-looking ADCPs) at standard depths. Hence, time series of scalar parameters and velocities are available for the upper ocean, the diurnal and seasonal thermocline, and for the levels of the intermediate and deep water masses. They may be used as well for model validation and provide a deeper insight into the meridional exchange of water masses across the 40° N latitude circle.

Hopefully, this article may encourage forthcoming studies which address these issues.

Data availability. All data of the REP14-MED experiment are available on the CMRE ftp server at <ftp://ftp.cmre.nato.int/>. Requests for access may be directed to registry@cmre.nato.int or pao@cmre.nato.int.

Author contributions. RO was the coordinator of the experiment and Chief Scientist on NRV *Alliance*, HVF was Chief Scientist on RV *Planet*, LB was the Principal Investigator from ALSEAMAR and provided the SeaExplorers, IB and AR were responsible for the collection and processing of CTD and ADCP data on NRV *Alliance*, KH and JK were the Principal Investigators from UEA and provided the SeaGliders, PMP provided the SVP drifters and the ARVOR-I floats, MK and AF collected and processed all data on RV *Planet* and the data from the WTD71 glider, BQ and MH processed the SeaGlider data, KS was in charge of the new pH/p(CO₂) sensor on glider Fin, JHL, BM, and PO contributed their assimilation studies, and MS was the Principal Investigator from PSU: he provided the Slocum glider Clyde which was piloted by ETK.

Competing interests. The authors declare that they have no conflict of interest.

Special issue statement. This article is part of the special issue “REP14-MED: A Glider Fleet Experiment in a Limited Marine Area”. It does not belong to a conference.

Acknowledgements. The authors would like to thank all partners which made REP14-MED such a great success. We appreciate the hard work of the officers, scientists, engineers, and technicians on NRV *Alliance*, RV *Planet*, and ashore who were responsible for the logistics of the experiment, launch and recovery of instruments, piloting of gliders, data acquisition, processing, and archiving: Marion Mery (ALSEAMAR), Marina Ampolo-Rella, Peter Anger, Gisella Baldasserini, George Botezatu, Alessandro Brogini, Daniele Cecchi, Giampolo Cimino, Marco Colombo, Rodney Dymond, Silvia Falchetti, Bartolome Garau, Craig Lewis, Michele Micheli, John Osler, Ivan Pennisi, Giuliana Pennucci, Richard Stoner, and Alex Trangeled (CMRE), Giovanni Quattrocchi and Andrea Satta (IAMC), Stefan Riedel (MARKDO), Gareth Lee and Stephen Woodward (UEA), Jens Benecke, Evelyn Ehlers, Malte Ehlers, Jörg Förster, Stefan Hasenpusch, Bernd Hilgenfeld, Daniel Jähne, Ralf Lühder, Lars Planert, Horst Schock, Marco Weidemann, and Lukas Zimmermann (WTD71). We thank Kongsberg Maritime who loaned SeaGlider Kong to UEA for this experiment. A special thanks is given to the masters and crews of NRV *Alliance* and RV *Planet* for their professionalism during the conduction of the experiments at sea, and to AMP who agreed to support the recovery of gliders in emergency situations. REP14-MED was sponsored by HQ Supreme Allied Command Transformation (Norfolk, VA, USA), and Michael Hemming’s PhD project analysing REP14-MED data was funded by the Defence Science and Technology Laboratory (DSTL, UK).

The article processing charges for this open-access publication were covered by a Research Centre of the Helmholtz Association.

Edited by: Giovanni Quattrocchi

Reviewed by: two anonymous referee

References

- Boyer, T. P., Antonov, J. I., Baranova, O. K., Coleman, C., Garcia, H. E., Grodsky, A., Johnson, D. R., Locarnini, R. A., Mishonov, A. V., O’Brien, T. D., Paver, C. R., Reagan, J. R., Seidov, D., Smolyar, I. V., and Zweng, M. M.: World Ocean Database 2013, edited by: Levitus, S. and Mishonov, A., NOAA Atlas NESDIS 72, 209 pp., 2013.
- Drévilion, M., Bourdallé-Badie, R., Derval, C., Lellouche, J. M., Rémy, E., Tranchant, B., Benkiran, M., Greiner, E., Guinehut, S., Verbrugge, N., Garric, G., Testut, C. E., Laborie, M., Nouel, L., Baharel, P., Bricaud, C., Crosnier, L., Dombrowsky, E., Durand, E., Ferry, N., Hernandez, F., Le Galloudec, O., Messal, F., and Parent, L.: The GODAE/Mercator-Ocean global ocean forecasting system: results, applications and prospects, *J. Oper. Oceanogr.*, 1, 51–57, <https://doi.org/10.1080/1755876X.2008.11020095>, 2008.
- Escudier, R., Mourre, B., Juza, M., and Tintoré, J.: Subsurface circulation and mesoscale variability in the Algerian subbasin from altimeter-derived eddy trajectories, *J. Geophys. Res.-Oceans*, 121, 6310–6322, <https://doi.org/10.1002/2016JC011760>, 2016.
- Fuda, J., Millot, C., Taupier-Letage, I., Send, U., and Bocognano, J.: XBT monitoring of a meridian section across the western Mediterranean Sea, *Deep-Sea Res. Pt. I*, 47, 2191–2218, 2000.
- García-Ladona, E., Castellón, A., Font, J., and Tintoré, J.: The Balearic current and volume transports in the Balearic Basin, *Oceanol. Acta*, 19, 489–497, 1996.
- Hemming, M. P., Kaiser, J., Heywood, K. J., Bakker, D. C. E., Boutin, J., Shitashima, K., Lee, G., Legge, O., and Onken, R.: Measuring pH variability using an experimental sensor on an underwater glider, *Ocean Sci.*, 13, 427–442, <https://doi.org/10.5194/os-13-427-2017>, 2017.
- Hernandez-Lasheras, J. and Mourre, B.: Dense CTD survey versus glider fleet sampling: comparison of the performance for regional ocean prediction west of Sardinia, *Ocean Sci.*, in preparation, 2018.
- Knoll, M., Benecke, J., and Borriore, I.: ADCP measurements obtained by RV Planet during REP14-MED. Technical Report WTD71-0094/2015 WB, Bundeswehr Technical Centre for Ships and Naval Weapons, Naval Technology and Research, 52 pp., 2015a.
- Knoll, M., Benecke, J., Russo, A., and Ampolo-Rella, M.: Comparison of CTD measurements obtained by NRV Alliance and RV Planet during REP14-MED. Technical Report WTD71-0083/2015 WB, Bundeswehr Technical Centre for Ships and Naval Weapons, Naval Technology and Research, 34 pp., 2015b.
- Knoll, M., Borriore, I., Fiekas, H.-V., Funk, A., Hemming, M. P., Kaiser, J., Onken, R., Queste, B., and Russo, A.: Hydrography and circulation west of Sardinia in June 2014, *Ocean Sci.*, 13, 889–904, <https://doi.org/10.5194/os-13-889-2017>, 2017.

- Küsel, E. T., Munoz, T., Siderius, M., Mellinger, D. K., and Heimlich, S.: Marine mammal tracks from two-hydrophone acoustic recordings made with a glider, *Ocean Sci.*, 13, 273–288, <https://doi.org/10.5194/os-13-273-2017>, 2017.
- Lorenc, A. C.: A global three-dimensional multivariate statistical interpolation scheme, *Mon. Weather Rev.*, 109, 701–721, 1981.
- Lumpkin, R. and Pazos, M.: Measuring surface currents with Surface Velocity Program drifters: the instrument, its data, and some recent results, National Oceanographic and Atmospheric Administration (NOAA), Atlantic Oceanographic and Meteorological Laboratory, Miami, FL, USA, 56 pp., 2005.
- Millot, C.: Circulation in the Western Mediterranean Sea, *J. Marine Syst.*, 20, 423–442, 1999.
- Murphy, A. H.: What is a good forecast? An essay on the nature of goodness in weather forecasting, *Weather Forecast.*, 8, 281–293, 1993.
- Oddo, P., Storto, A., Dobricic, S., Russo, A., Lewis, C., Onken, R., and Coelho, E.: A hybrid variational-ensemble data assimilation scheme with systematic error correction for limited-area ocean models, *Ocean Sci.*, 12, 1137–1153, <https://doi.org/10.5194/os-12-1137-2016>, 2016.
- Olita, A., Ribotti, A., Fazioli, L., Perilli, A., and Sorgente, R.: Surface circulation and upwelling in the Sardinia Sea: A numerical study, *Cont. Shelf Res.*, 71, 95–108, 2013.
- Oke, P. R., Larnicol, G., Jones, E. M., Kourafalou, V., Sperreik, A. K., Carse, F., Tanajura, C. A. S., Mourre, B., Tonani, M., Brassington, G. B., Le Henaff, M., Halliwell Jr., G. R., Atlas, R., Moore, A. M., Edwards, C. A., Martin, M. J., Sellar, A. A., Alvarez, A., De Mey, P., and Iskandarani, M.: Assessing the impact of observations on ocean forecasts and reanalyses: Part 2, Regional applications, *J. Oper. Oceanogr.*, 8, s63–s79, 2015.
- Onken, R.: Forecast skill score assessment of a relocatable ocean prediction system, using a simplified objective analysis method, *Ocean Sci.*, 13, 925–945, <https://doi.org/10.5194/os-13-925-2017>, 2017a.
- Onken, R.: Validation of an ocean shelf model for the prediction of mixed-layer properties in the Mediterranean Sea west of Sardinia, *Ocean Sci.*, 13, 235–257, <https://doi.org/10.5194/os-13-235-2017>, 2017b.
- Onken, R., Ampolo-Rella, M., Baldasserini, G., Borrione, I., Cecchi, D., Coelho, E., Falchetti, S., Fiekas, H.-V., Funk, A., Jiang, Y.-M., Knoll, M., Lewis, C., Mourre, B., Nielsen, P., Russo, A., and Stoner, R.: REP14-MED Cruise Report, CMRE Cruise Report Series, CMRE-CR-2014-06-REP14-MED, CMRE, La Spezia, 76 pp., 2014.
- Poulain, P.-M., Barbanti, R., Font, J., Cruzado, A., Millot, C., Gertman, I., Griffa, A., Molcard, A., Rupolo, V., Le Bras, S., and Petit de la Villeon, L.: MedArgo: a drifting profiler program in the Mediterranean Sea, *Ocean Sci.*, 3, 379–395, <https://doi.org/10.5194/os-3-379-2007>, 2007.
- Ribotti, A., Puillat, I., Sorgente, R., and Natale, S.: Mesoscale circulation in the surface layer off the southern and western Sardinia island in 2000–2002, *Chem. Ecol.*, 20, 345–363, 2004.
- Robinson, A. R., Leslie, W. G., Theocharis, A., and Lascaratos, A.: Mediterranean Sea circulation, in: *Encyclopedia of Ocean Science*, 2nd Edn., edited by: Steele, J. H., Turekian, K. K., and Thorpe, S. A., Academic Press, 710–725, <https://doi.org/10.1016/B978-012374473-9.00376-3>, 2008.
- Russo, A., Oddo, P., Borrione, I., and Onken, R.: Comparing capabilities and costs of oceanographic observations simultaneously collected in a limited marine area by autonomous vs. traditional platforms (ships), *Ocean Sci.*, in preparation, 2018.
- Sellschopp, J.: A towed CTD chain for two-dimensional high resolution hydrography, *Deep-Sea Res. Pt. I*, 44, 147–165, [https://doi.org/10.1016/S0967-0637\(96\)00087-8](https://doi.org/10.1016/S0967-0637(96)00087-8), 1997.
- Shchepetkin, A. F. and McWilliams, J. C.: The Regional Ocean Modeling System: A split-explicit, free-surface, topography following coordinates ocean model, *Ocean Model.*, 9, 347–404, 2005.
- Testor, P. and Gascard, J.-C.: Large-scale spreading of deep waters in the Western Mediterranean Sea by submesoscale coherent eddies, *J. Phys. Oceanogr.*, 33, 75–87, 2003.
- Testor, P. and Gascard, J.-C.: Large scale flow separation and mesoscale eddy formation in the Algerian Basin, *Prog. Oceanogr.*, 66, 211–230, 2005.
- Tonani, M., Teruzzi, A., Korres, G., Pinardi, N., Crise, A., Adani, M., Oddo, P., Dobricic, S., Fratianni, C., Drudi, M., Salon, S., Grandi, A., Girardi, G., Lyubartsev, V., and Marino, S.: The Mediterranean Monitoring and Forecasting Centre, a component of the MyOcean system, in: *Proceedings of the Sixth International Conference on EuroGOOS*, 4–6 October 2011, Sopot, Poland, edited by: Dahlin, H., Fleming, N. C., and Petersson, S. E., EuroGOOS Publication no. 30, 2014.
- Wilcox, D. C.: Reassessment of the scale-determining equation for advanced turbulence models, *AIAA J.*, 26, 1299–1310, 1988.