



HAL
open science

Simulation and design of junction termination structures for diamond Schottky diodes

Fabien Thion, Karine Isoird, Dominique Planson, M-L Locatelli, H Ding

► **To cite this version:**

Fabien Thion, Karine Isoird, Dominique Planson, M-L Locatelli, H Ding. Simulation and design of junction termination structures for diamond Schottky diodes. European Conference on Diamond Diamond-like Materials Carbon Nanotubes and Nitrides (DIAMOND 2010), Sep 2010, Budapest, Hungary. hal-03656932

HAL Id: hal-03656932

<https://hal.science/hal-03656932v1>

Submitted on 2 May 2022

HAL is a multi-disciplinary open access archive for the deposit and dissemination of scientific research documents, whether they are published or not. The documents may come from teaching and research institutions in France or abroad, or from public or private research centers.

L'archive ouverte pluridisciplinaire **HAL**, est destinée au dépôt et à la diffusion de documents scientifiques de niveau recherche, publiés ou non, émanant des établissements d'enseignement et de recherche français ou étrangers, des laboratoires publics ou privés.

Simulation and design of junction termination structures for diamond Schottky diodes

Authors & affiliations:

F. Thion^{1,2,3}, K. Isoird^{1,2}, D. Planson³, M-L. Locatelli^{4,5}, H. Ding^{1,2}

¹CNRS ; LAAS ; 7 avenue du colonel Roche, F-31077 Toulouse, France

²Université de Toulouse ; UPS, INSA, INP, ISAE ; LAAS ; F-31077 Toulouse, France

³Université de Lyon, INSA de Lyon, CNRS UMR 5005, Laboratoire AMPERE, F-69621 Villeurbanne, France

⁴Université de Toulouse; UPS, INPT ; LAPLACE (Laboratoire Plasma et Conversion d'Energie) ; 118 route de Narbonne,

F-31062 Toulouse cedex 9, France

⁵CNRS; LAPLACE; F-31062 Toulouse, France.

Abstract: In this paper, the first step of the design of a junction termination structure usable on diamond Schottky diodes is introduced. Through the collaboration of AMPERE and LAAS laboratories, a study of junction termination structures using field plates and semi-resistive materials was carried out. Several results from simulations of P type Schottky diodes protected by MESA coated with several layers of dielectric materials are shown in this paper. The analysis of those simulations, conducted on pseudo-vertical diodes protected by a field plate on a semi-resistive layer deposited on top of a dielectric, shows a great efficiency of such junction termination structures.

I. Introduction:

Diamond is well known for being an exceptional material. It has one of the best thermal conductivity and is amongst the toughest. It is also a promising candidate for power electronics, seeing its numerous theoretical qualities. As a wide band-gap semiconductor [1], [2], it is expected to be the material best suited for working under extreme conditions [3], [4]. The first unipolar diodes made on diamond start to appear in laboratories. They are elaborated on homo-epitaxied and in-situ doped substrates.

All power electronics components need a junction termination structure to limit the peripheral electric field. The particular properties of diamond (like permittivity, band gap, critical electric field) imply an adaptation of this structure.

With those first batches of components, we need to develop junction termination structures that will allow the diamond components to reach their full potential, mainly in terms of breakdown voltage. Since diamond has a huge theoretical critical electric field, the junction termination structure is going to have a major impact on the performance of the components. Those structures will allow us to demonstrate the efficiency of such diamond components.

II. Simulation platform:

The simulation platform has been developed using TCAD SENTAURUS, software based on a finite elements method. We have worked with models already implemented in the software, such as the ones used for silicon or for silicon carbide, tuning them to the diamond properties. The latter values are taken from a large bibliographic study (for instance [6], [7]). However, it is reasonable to mention the fact that some values collected throughout the bibliographic study are extrapolated from other semiconductors, or underestimate its theoretical capabilities, mostly because of the poor quality of the samples on which the different studies were carried out. Nevertheless, the parameter file is regularly updated with the latest experimental results.

III. Junction termination structure:

A: Introduction

The peripheral protection is a structure implemented during the process and is part of the design. This device is developed to reach the theoretical breakdown voltage (equivalent to the breakdown voltage of a plane parallel infinite junction), by spreading out the equipotentials at the junction periphery, hence avoiding local increases in the electric field which can lead to premature breakdown voltage. The efficiency of a peripheral junction protection is evaluated using the percentage of the theoretical breakdown voltage.

Some steps of the process, like ion implant in diamond, are yet to be perfected and do not allow the use of standard peripheral protections, like guard rings or JTE (Junction Termination Extension). We then need to imagine peripheral protections based upon etching and layers of dielectrics and metals, such as the field plate protection technique as described in [8].

Using a layer of semi-resistive material is an alternative technique to minimize local increases of the electric field in the surface dielectric layer at the edge of the metallic contact. Since diamond electronic devices are intended to work at high temperatures, it seems interesting to study the behavior of semi-resistive materials used as field plate protections. Indeed, resistivity decreases in a lot of dielectrics when the temperature rises.

B: Field plate on a dielectric material

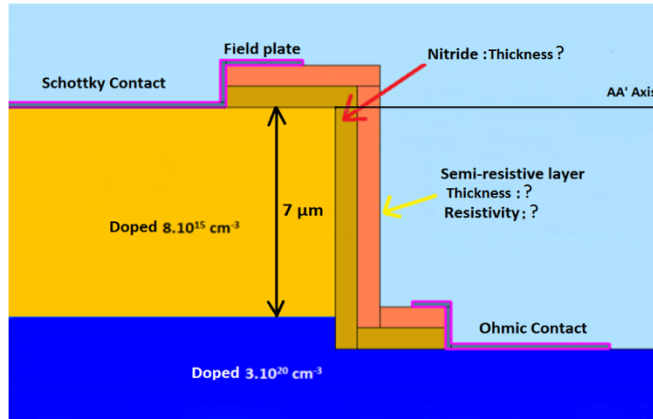


Fig 1: Simulated pseudo-vertical structure. The question marks are relative to the parameters we have modified.

The simulated structure is introduced in Fig.1. To make this pseudo-vertical structure, the Schottky contact is deposited on top of the p- layer, doped at $8.10^{15} \text{ cm}^{-3}$ and $7 \mu\text{m}$ thick. To get to the p+ layer (doped at $3.10^{20} \text{ cm}^{-3}$ and $5 \mu\text{m}$ thick) and further to deposit the ohmic contact, the p- layer is etched. One or several layers of dielectric materials and a field plate are what make this peripheral protection. First, we studied the field plate with only one dielectric material. Then, we tested the result of the combination of a semi-resistive layer deposited on the chosen dielectric. The theoretical breakdown voltage of such a structure is 1500V at 600K. This breakdown voltage reaches 1990V at 800K. Taking into account an efficiency of 80% for the peripheral protection, we should reach the breakdown voltage of 1200V at 600K for the real structure.

A field plate is defined by two main parameters: the thickness of the dielectric and the length of the field plate.

First, the kind of dielectric used in the simulations is chosen between SiO_2 and Si_3N_4 , which are both available in the clean room of the laboratory. Simulations show that the bigger the permittivity is, the better is the breakdown voltage, as shown in Fig. 2.

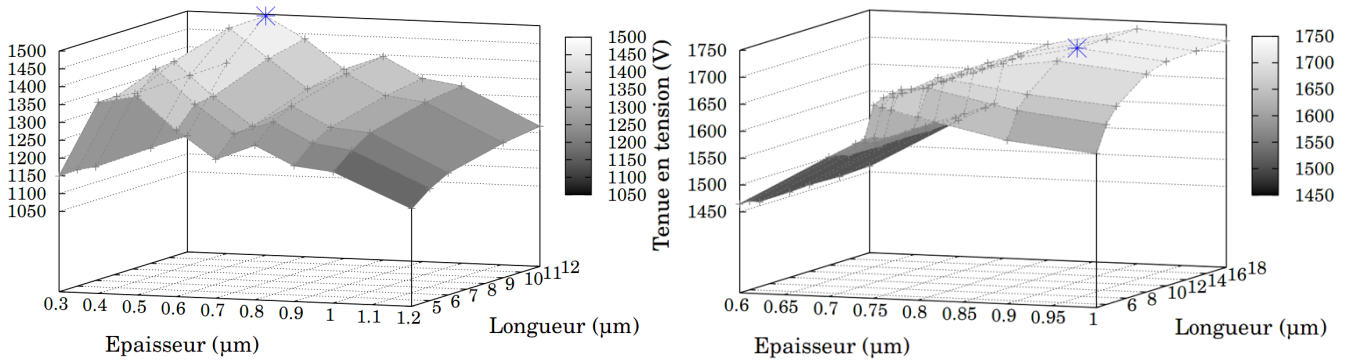


Fig 2:3D views of the simulations of the diamond diode reverse characteristics protected by a field plate on two different dielectric materials. SiO_2 is used on the left and Si_3N_4 is used on the right.

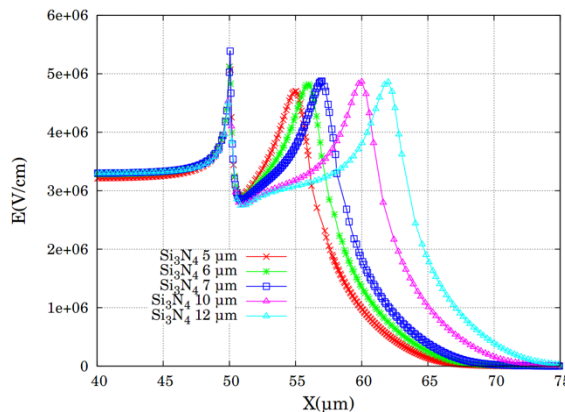


Fig 3: Electric field across the axis AA' on the Fig.1 structure, with a Si_3N_4 dielectric layer, at breakdown. The field plate length is the varying parameter.

Fig 2. shows that the best breakdown voltage is obtained for field plates on Si_3N_4 . We notice that the behavior is similar with both dielectrics: the thickness allows obtaining a critical value for the breakdown voltage and the field plate length provokes a saturation of the breakdown voltage for its higher values.

Fig 3. shows how the electric field spreads across the AA' axis of the structure. We notice two maximums: one at the edge of the Schottky contact and one at the edge of the field plate.

The best configuration is obtained when the two maxima have the same value, which is when the field plate is $10\mu\text{m}$ long. Hence, the maximum breakdown voltage is 1720V (84% efficiency) for a Si_3N_4 layer with a thickness of 900nm and a field plate of $10\mu\text{m}$. In this case, simulations indicate that the carrier generation in diamond due to avalanche multiplication occurs at the Schottky contact edge.

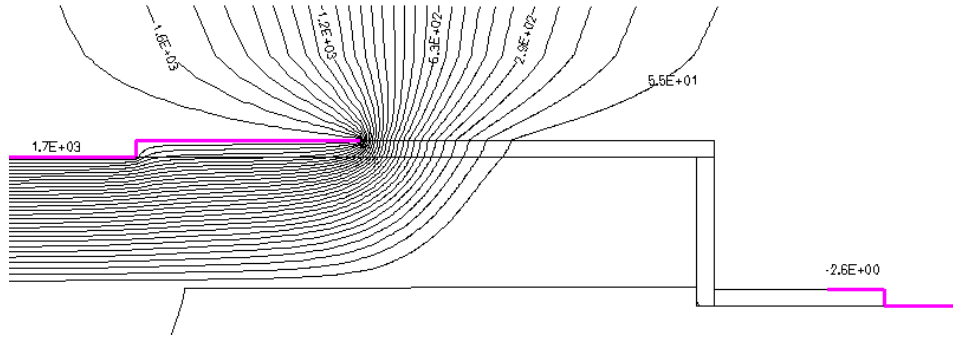


Fig 4: Equipotential lines in the structure, corresponding to the best structure configuration, while at breakdown.

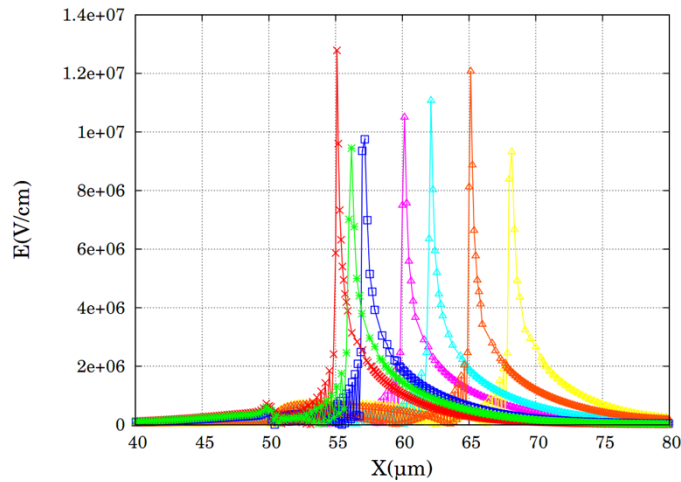


Fig 5: Electric field in the Si_3N_4 at the nitride/field plate interface, for different field plate length (between $5\mu\text{m}$ and $18\mu\text{m}$), at the corresponding breakdown voltage values .

Fig 4 and 5 show respectively the equipotentials in the structure and the electric field in the silicon nitride at breakdown voltage. These results show that the value of the electric field in the dielectric layer is twice as much as its value in diamond (see Fig . 3), risking a rupture of the dielectric. Hence using a semi-resistive material may help the device breakdown value being closer to the theoretical one.

C: Field plate on a semi-resistive deposited on a layer of dielectric

1The simulated structure is the same, with an added layer of a semi-resistive material on a layer of Si_3N_4 . 4Simulations show that the thickness of the semi-resistive layer does not influence the breakdown voltage: only its resistivity changes the level of leakage currents. 3The resistivity of a typical semi-resistive material is between 10^7 and $10^{12}\Omega\cdot\text{cm}$, depending mostly on the temperature.

2The main parameters used to tune the breakdown voltage of the structure are the thickness of the nitride, the thickness of the semi-resistive layer, the resistivity of the semi-resistive layer and the length of the field plate.

5Thus, the breakdown voltage is tuned using the same method as previously with the same two parameters: field plate length and Si_3N_4 thickness.

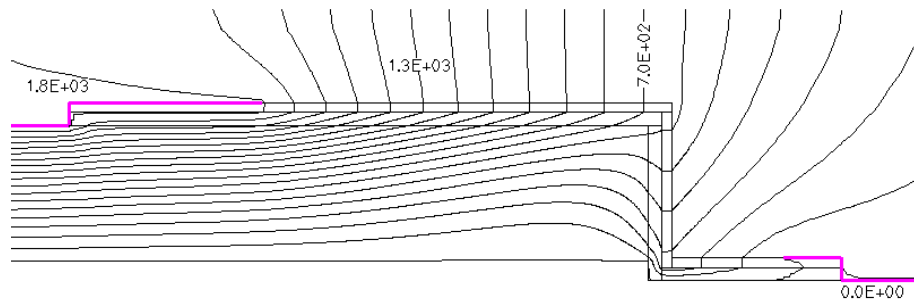


Fig 7: Equipotential lines in the structure protected by a semi-resistive layer on top of a dielectric for the best structure configuration, while at breakdown.

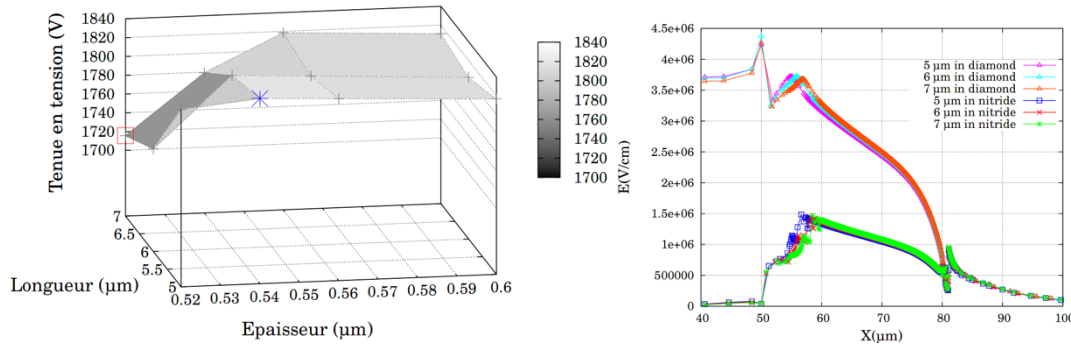


Fig 6: a) 3D view of the simulations of diamond diodes reverse characteristics protected by a field plate on a semi-resistive layer deposited on a Si_3N_4 layer. b) Value of the electric field at breakdown voltage on the AA' axis (top curves) and on the top edge of the nitride (bottom curves)

Fig. 6 and Fig. 7 results show that the maximum breakdown voltage obtained is 1830V, for an efficiency of 92%, with a thickness of 540nm and a field plate length between 5 and 10 μm . Equipotentials are spread out along the whole semi-resistive layer (Fig.6), which contributes to avoid the breakdown to occur at the edge of the field plate and instead puts it at the side of the p- layer, where the equipotentials tighten. Moreover, in Fig.6 b), we notice that the value of the electric field is more than twice less in the nitride layer. By moving the position of the electrode of the ohmic contact, we can “choose” where the breakdown is going to happen, hence being able to deduce where the device is the most fragile.

D. Conclusion and perspectives

The peripheral junction protection based upon a combination of semi-resistive material resting upon a layer of silicon nitride seems to give promising results. The returned simulation efficiencies are respectively of 84% for a field plate on silicon nitride and of 92% with the help of a semi-resistive material. Optimizations can still be made on those designs. Hence extensive studies of diamond etching process and of the behavior of semi-resistive materials with temperature have to be carried out. New optimized devices will be realized in the near future.

References:

- [1] M.Nesladek, “Conventional n-type doping in diamond: state of the art and recent progress,” *Semiconductor Science and Technology*,|2005|.
- [2] J.E.Butler, M.W.Geis, K.E.Krohn, J.Lawless, S.Deneault, T.M.Lyszczarz, D.Flehtner and R.Wright, “Exceptionally high voltage schottky diamond diodes and low boron doping,” *Semiconductor Science and Technology*, vol.18, no.3, pp.S67–S71,|2003|.
- [3] C.Raynaud, D.Tournier, H.Morel and D.Planson, “Comparison of high voltage and high temperature performances of wide bandgap semiconductors for vertical power devices,” *Diamond and Related Materials*, vol.19, pp.1–6,2010.
- [4] K.Shenai, R.Scott and B.Baliga, “Optimum semiconductors for high-power electronics,” *IEEE*, p.1811, 1989.
- [5] Sentaurus user guide A-2008.09.
- [6] S.Rashid, A.Tajani, D.Twitchen, L.Coulbeck, F.Udrea, T.Butler, N.Rupasinghe, M.Brezeanu, J.Isberg, A.Garraway, M.Dixon, R.S.Balmer, D.Chamund, P.Taylor and G.A.J.Amaratunga, “Numerical parameterization of chemical-vapor-deposited single-crystal diamond for device simulation and analysis,”|2008|.
- [7] T.Teraji, H.Wada, M.Yamamoto, K.Arima and T.Ito, “Highly efficient doping of boron into high quality homoepitaxial diamond films,” *Diamond and Related Materials*, vol.15, no.4-8,pp.602–606,|2006|.
- [8] M.Brezeanu, M.Avram, S.Rashid, G.A.J.Amaratunga, J.E.Butler, N.Rupasinghe, F.Udrea, A.Tajani, M.Dixon, D.Twitchen, A.Garraway, D.Chamund, M.J.Taylor and G.Brezeanu, “Termination structures for diamond schottky barrier diodes,” *Proceedings of the 18th International Symposium on power semiconductor devices and IC’s*,|2006|.