



**HAL**  
open science

## **PPAR $\beta/\delta$ priming enhances the anti-apoptotic and therapeutic properties of mesenchymal stromal cells in myocardial ischemia–reperfusion injury**

Charlotte Sarre, Rafael Contreras-Lopez, Nitirut Nernpermpisooth, Christian Barrère, Sarah Bahraoui, Claudia Terraza, Gautier Tejedor, Anne Vincent, Patricia Luz-Crawford, Kantapich Kongpol, et al.

### ► To cite this version:

Charlotte Sarre, Rafael Contreras-Lopez, Nitirut Nernpermpisooth, Christian Barrère, Sarah Bahraoui, et al.. PPAR $\beta/\delta$  priming enhances the anti-apoptotic and therapeutic properties of mesenchymal stromal cells in myocardial ischemia–reperfusion injury. *Current Stem Cell Research & Therapy*, 2022, 13 (1), pp.167. 10.1186/s13287-022-02840-0 . hal-03653227

**HAL Id: hal-03653227**

**<https://hal.science/hal-03653227>**

Submitted on 15 Nov 2022

**HAL** is a multi-disciplinary open access archive for the deposit and dissemination of scientific research documents, whether they are published or not. The documents may come from teaching and research institutions in France or abroad, or from public or private research centers.

L'archive ouverte pluridisciplinaire **HAL**, est destinée au dépôt et à la diffusion de documents scientifiques de niveau recherche, publiés ou non, émanant des établissements d'enseignement et de recherche français ou étrangers, des laboratoires publics ou privés.



Distributed under a Creative Commons Attribution 4.0 International License

RESEARCH

Open Access



# PPAR $\beta/\delta$ priming enhances the anti-apoptotic and therapeutic properties of mesenchymal stromal cells in myocardial ischemia–reperfusion injury

Charlotte Sarre<sup>1,2†</sup>, Rafael Contreras-Lopez<sup>1,2†</sup>, Nitirut Nernpermpisooth<sup>3</sup>, Christian Barrere<sup>1</sup>, Sarah Bahraoui<sup>2</sup>, Claudia Terraza<sup>2</sup>, Gautier Tejedor<sup>2</sup>, Anne Vincent<sup>1</sup>, Patricia Luz-Crawford<sup>4,5</sup>, Kantapich Kongpol<sup>1,3</sup>, Sarawut Kumphune<sup>6</sup>, Christophe Piot<sup>1,7</sup>, Joel Nargeot<sup>1</sup>, Christian Jorgensen<sup>2,8</sup>, Farida Djouad<sup>2\*†</sup> and Stéphanie Barrere-Lemaire<sup>1\*†</sup>

## Abstract

**Background:** Mesenchymal Stromal Cells (MSC) have been widely used for their therapeutic properties in many clinical applications including myocardial infarction. Despite promising preclinical results and evidences of safety and efficacy in phases I/ II, inconsistencies in phase III trials have been reported. In a previous study, we have shown using MSC derived from the bone marrow of PPAR $\beta/\delta$  (Peroxisome proliferator-activated receptors  $\beta/\delta$ ) knockout mice that the acute cardioprotective properties of MSC during the first hour of reperfusion are PPAR $\beta/\delta$ -dependent but not related to the anti-inflammatory effect of MSC. However, the role of the modulation of PPAR $\beta/\delta$  expression on MSC cardioprotective and anti-apoptotic properties has never been investigated.

**Objectives:** The aim of this study was to investigate the role of PPAR $\beta/\delta$  modulation (inhibition or activation) in MSC therapeutic properties in vitro and ex vivo in an experimental model of myocardial infarction.

**Methods and results:** Naïve MSC and MSC pharmacologically activated or inhibited for PPAR $\beta/\delta$  were challenged with H<sub>2</sub>O<sub>2</sub>. Through specific DNA fragmentation quantification and qRT-PCR experiments, we evidenced in vitro an increased resistance to oxidative stress in MSC pre-treated by the PPAR $\beta/\delta$  agonist GW0742 versus naïve MSC. In addition, PPAR $\beta/\delta$ -priming allowed to reveal the anti-apoptotic effect of MSC on cardiomyocytes and endothelial cells in vitro. When injected during reperfusion, in an ex vivo heart model of myocardial infarction,  $3.75 \times 10^5$  PPAR $\beta/\delta$ -primed MSC/heart provided the same cardioprotective efficiency than  $7.5 \times 10^5$  naïve MSC, identified as the optimal dose in our experimental model. This enhanced short-term cardioprotective effect was associated with an increase in both anti-apoptotic effects and the number of MSC detected in the left ventricular wall at 1 h of reperfusion. By contrast, PPAR $\beta/\delta$  inhibition in MSC before their administration in post-ischemic hearts during reperfusion decreased their cardioprotective effects.

\*Correspondence: farida.djouad@inserm.fr; Stephanie.barrere@igf.cnrs.fr

†Charlotte Sarre, Rafael Contreras-Lopez, have contributed equally to this work

<sup>1</sup> IGF, Université de Montpellier, CNRS, INSERM, 141 rue de la Cardonille, 34094 Montpellier Cedex 5, France

<sup>2</sup> IRMB, Univ Montpellier, INSERM, Montpellier, France

Full list of author information is available at the end of the article



**Conclusion:** Altogether these results revealed that PPAR $\beta/\delta$ -primed MSC exhibit an increased resistance to oxidative stress and enhanced anti-apoptotic properties on cardiac cells in vitro. PPAR $\beta/\delta$ -priming appears as an innovative strategy to enhance the cardioprotective effects of MSC and to decrease the therapeutic injected doses. These results could be of major interest to improve MSC efficacy for the cardioprotection of injured myocardium in AMI patients.

**Keywords:** Myocardial infarction, Reperfusion injury, Apoptosis, Mesenchymal stem cells, Priming, PPAR $\beta/\delta$ , Cardioprotection

## Background

Myocardial reperfusion by revascularization of the culprit artery is the only treatment for AMI (Acute Myocardial Infarction) patients [1]. However, there is no treatment to specifically prevent irreversible ischemia–reperfusion (IR) injury, considered as the side effects of reperfusion mainly due to apoptosis and triggered by abrupt oxygen restoration in the ischemic tissue. Apoptosis is a highly regulated energy-dependent form of cell death of potential interest for therapeutic intervention because observed in ischemic disease both in animal models and in patients [2–5]. This regulated mechanism of cell death is specific to the reperfusion phase. Indeed, apoptosis is pre-activated during ischemia and executed during reperfusion, due to its dependence on ATP production [6]. Therefore, strategies to target specifically apoptotic cascades post-AMI need to be developed to prevent reperfusion injury and to limit infarct size [7–16].

Mesenchymal Stromal Cell (MSC)-based therapy has been reported to improve the post-MI functional recovery of the myocardium via a myriad of pathways that include the increase in endogenous cell survival, proliferation and angiogenesis. In addition, MSC potently repress inflammation and apoptosis through their plasticity and their capacity to release bioactive molecules and transfer organelles such as mitochondria and extracellular vesicles (EV) [17, 18]. Based on these properties, MSC have been tested in several preclinical studies with promising results. Indeed, in preclinical studies of AMI, MSC injection improves tissue repair and cardiac function [19], regulates the inflammatory response, decreases cell apoptosis [20] and reduces mortality in animals [21]. In clinical trials, although the safety and efficacy of MSC in phase I and II have been demonstrated, inconsistencies in phase III trials to evidence their cardioprotective properties have been reported [22–24]. These inconsistencies have been, in part, attributed to the poor in vivo survival rate and engraftment of MSC but also to the source of MSC used and the deleterious effects of the in vitro amplification process of MSC obtained from patients [24]. Therefore, to optimize MSC therapeutic potential and bring them into the routine clinical practice, the enhancement of MSC survival rate and engraftment in

the damaged tissue as well as their anti-apoptotic properties on cardiac cells appears as a promising approach.

Cardiomyocytes are one of the main and most abundant cardiac cell types in the heart allowing contractile and pacemaker properties. Endothelial cells constitute the majority of non-cardiomyocytes and are likely to play a crucial role in physiological function and response to injury [25]. During IR injury, despite their higher tolerance to ischemic injury in close relation to their anaerobic metabolism, these two cell types undergo death through inflammation, oxidative stress and calcium overload [26, 27]. In particular, cardiac microvascular endothelial cell injury may occur much earlier and with much greater severity than cardiomyocyte injury [27]. Cardiomyocytes and endothelial cells seem to be particularly vulnerable during reperfusion, and undergo apoptosis within few minutes of reperfusion in isolated myocardial tissue [28, 29].

Approaches to improve MSC-based anti-apoptotic effects on cardiomyocytes have shown promising results both in vitro and in vivo [30–33] but only very few studies focused on endothelial cells [34]. However, these properties need to be further enhanced to optimally protect the heart from the massive apoptotic burst occurring during ischemia–reperfusion injury. Moreover, MSC do not survive long after transplantation into injured organs such as ischemic hearts. Indeed, within 24 h after systemic injection, only 3% of MSC are found in the marginal zones of the infarct myocardium, and less than 1% of MSC survive for more than a week [35]. Therefore, to significantly improve MSC-based therapy, the enhancement of both MSC anti-apoptotic properties and MSC survival abilities should be considered.

Peroxisome proliferator-activated receptors (PPARs) are nuclear receptors that exist in three different isoforms: PPAR $\alpha$ , PPAR $\beta/\delta$  and PPAR $\gamma$ . They heterodimerize with RXR (retinoid X receptor) and, after ligand binding, act as transcriptional regulators. Dependent on the tissue ligands and cofactors, PPAR isoforms exert multiple functions [36]. While PPAR $\alpha$  is mainly expressed in brown adipose tissue, intestine, heart, liver, kidney, PPAR $\gamma$  is expressed in immune cells, gut, white and brown adipose tissue. PPAR $\beta/\delta$ , ubiquitously expressed, is a proangiogenic member in vascular cell

[37–39], where it plays an anti-apoptotic role through an elevation of cAMP [40]. Later studies showed that the anti-apoptotic properties of PPAR $\beta/\delta$  in endothelial cells were mediated through the upregulation of 14–3-3 mRNA and protein levels [41, 42]. In line with these studies, the selective PPAR $\beta/\delta$  agonist, GW501516, was shown to protect the cardiomyoblast cell line H9c2 from H<sub>2</sub>O<sub>2</sub>-induced cell death [43]. Although the anti-apoptotic effect of PPAR $\beta/\delta$  has been evidenced in cardiomyocytes, the modulation of PPAR $\beta/\delta$  expression, highly expressed by MSC [44], on MSC anti-apoptotic and cardioprotective properties has never been investigated.

The present study investigates the role of PPAR $\beta/\delta$  on MSC (i) survival and anti-apoptotic functions on cardiomyocytes and endothelial cells in vitro and (ii) therapeutic potential in an experimental model of MI.

## Methods

### MSC culture

MSC isolation and amplification of murine MSC were carried out in conditions previously described [45]. MSC were then seeded at a density of  $0.5 \times 10^6$  cells per cm<sup>2</sup> in minimum essential medium (MEM)- $\alpha$  supplemented with 10% fetal bovine serum (FBS), 2 mM glutamine, 100 U/mL penicillin, 100 mg/mL streptomycin and 2 ng/ml human basic fibroblast growth factor (bFGF). The phenotypic and differentiation potential of MSC were assessed as previously described [45]. Briefly, for the phenotypic characterization, MSC were incubated during 20 min with conjugated monoclonal antibodies from BD Biosciences (Le Pont de Claix, France) in Phosphate Buffer Saline (PBS) supplemented with 0.1% bovine serum albumin. Regarding the differentiation of MSC into adipocytes, osteoblasts and chondrocytes, we relied on the inductive conditions already reported [45]. Adipogenic differentiation of MSC was assessed by the analysis of lipid droplets formation after Oil red O staining and by Reverse Transcriptase-quantitative Polymerase Chain Reaction (RT-qPCR). MSC chondrogenic differentiation was evaluated by RT-qPCR and the osteogenic differentiation was measured by RT-qPCR and the mineralization of the extracellular matrix. Induction of apoptosis was obtained by incubating MSC during 4 h in a minimal medium (without FBS) containing 350  $\mu$ M of H<sub>2</sub>O<sub>2</sub>.

### MSC pre-treatments with PPAR $\beta/\delta$ agonist and antagonist and labeling with CM-Dil

MSC were pre-incubated for 24 h with either PPAR $\beta/\delta$  antagonist GSK0660 (0.1 and 1  $\mu$ M) or PPAR $\beta/\delta$  agonist GW0742 (0.1 and 1  $\mu$ M) before to be washed with PBS and used in co-cultures experiments or injected in the myocardium. When indicated, MSC were labeled with the fluorescent cell-tracker CM-Dil (Molecular Probes).

MSC were collected and suspended in 5 mL PBS containing CM-Dil (10<sup>7</sup> cells/10  $\mu$ g) prior to be incubated at 37 °C for 5 min followed by 15 min at 4 °C, in the dark. Labeled MSC were washed 2 times in PBS, resuspended in Tyrode solution and maintained at 4 °C prior to be injected in the myocardium.

### Co-cultures of cardiomyocytes or endothelial cells with MSC

H9c2 embryonic rat heart-derived (ventricular) cells (myoblasts) were cultured in Dulbecco's modified Eagle's medium (DMEM), supplemented with 10% fetal bovine serum (FBS), 100 Units/mL penicillin, and 100  $\mu$ g/mL streptomycin. To induce apoptosis, H9c2 were cultured in a minimal medium (without FBS) containing 350  $\mu$ M of H<sub>2</sub>O<sub>2</sub> during 4 h.

Human umbilical vein endothelial cells EA.hy926 (ATCC) were cultured in DMEM, supplemented with 10% fetal bovine serum (FBS), 100 Units/mL penicillin, and 100  $\mu$ g/mL streptomycin. To induce apoptosis in EA.hy926, cells were cultured in a minimal medium (without FBS) containing 350  $\mu$ M of H<sub>2</sub>O<sub>2</sub> during 4 h.

In order to evaluate the effect of MSC on cardiomyocytes or endothelial cells, a co-culture assay was designed using the transwell system to avoid cell–cell contact with 50,000 MSC (upper part) in a complete medium containing FBS. After 1 h, H9c2 or EA.hy926 cells were evaluated for apoptosis using the DNA fragmentation assay.

### DNA fragmentation assay

Specific DNA fragmentation as a hallmark of apoptosis was quantified in vitro on cell lysates with an enzyme-linked immunosorbent assay kit (Cell Death ELISA; Roche) designed to measure histone-complexed DNA fragments (mono- and oligonucleosomes) released in the cytosol of cells induced for apoptosis. Data were normalized to the value by obtained in basal conditions of culture.

### RT-qPCR

Isolation of total RNA for each sample was performed using the RNeasy Mini Kit (Qiagen). The quantity and quality of the RNA extracted were defined by using a NanoDrop ND-1000 spectrophotometer (NanoDrop ND, Thermo Fisher Scientific). Then, using the SensiFAST cDNA synthesis kit (Bioline), cDNA was synthesized by reverse transcribing 500 ng RNA into cDNA. Using the SensiFAST™ SYBR (Bioline) and a LightCycler® 480 Detection system Quantitative following manufacturer's recommendations, PCR were performed. Primers specific were designed using the Primer3 software (sequences for primers are detailed in Additional file 1). Data were normalized to the housekeeping gene ribosomal protein S9

(RPS9) and the values were expressed as relative mRNA level of specific gene expression as calculated using the  $2^{-\Delta C_t}$  method.

### Animal experiments

All experiments were carried out on C57BL/6 J mice (*Charles River laboratories*) in accordance with the European Communities Council directive of November 1986 and conformed to the "Guide for the Care and Use of Laboratory Animals" published by the US National Institutes of Health (NIH publication 8th Edition, 2011).

### Langendorff ex vivo studies

C57Bl6 male mice were anesthetized with a first intramuscular injection of an anesthetic cocktail comprising ketamine (14 mg/kg, Imalgène®; *Merial*) and xylazine (14 mg/kg, Rompun®; *Bayer*), and by a second injection of pentobarbital (76.6 mg/kg; *Sanofi-Aventis*). After sternotomy, the heart was excised, quickly cannulated through the aorta and mounted on a homemade Langendorff system. It was retrogradely perfused at pressure- and temperature-constant (37 °C) Tyrode solutions.

### Ischemia–reperfusion protocols

On the Langendorff system, the heart was subjected to ischemia–reperfusion (IR) protocol comprising, after a 15 min-stabilization period of Tyrode perfusion, a 30 min-period of no-flow to induce global ischemia. Reperfusion was achieved by restoring the perfusion during 60 min with the Tyrode solution alone (IR control) or with MSC cell in Tyrode solution (MSC) administered during reperfusion. Ischemic postconditioning was induced at the end of global ischemia by the application of a conditioning stimulus comprising 3 cycles of 1 min-reperfusion / 1 min-ischemia, followed by 54 min of reperfusion. For the ex vivo evaluation of MSC-based cell therapy, MSC cells prepared in the Tyrode solution at various concentrations (2500; 5000 and 10,000 cells/mL) were perfused in isolated hearts during the 60 min-reperfusion phase (perfusion of ≈120 mL per heart).

### Infarct size assessment

LV were sliced transversally into 1-mm-thick sections and incubated in a 1% solution of 2,3,5-triphenyltetrazolium chloride (TTC, *Sigma-Aldrich*) for 15 min at 37 °C. After fixation in a 4% paraformaldehyde–PBS solution, the slices were weighted and each side was photographed (*Olympus* camera). Infarcted area was measured by planimetry with ImageJ software (*U. S. National Institutes of Health*) and expressed as a percentage of the left ventricle.

### Immunoblotting

Tissue samples (left ventricle) were rapidly frozen in liquid nitrogen after the end of ex vivo IR protocols. Samples were homogenized with a grinder in RIPA buffer [50 mM Tris (*Sigma-Aldrich*), 150 mM NaCl (*Sigma-Aldrich*), 1% Triton X-100 (*Sigma-Aldrich*), 0.1% sodium dodecyl sulfate (*Sigma-Aldrich*) pH 8.0] supplemented with EDTA-free protease and phosphatase inhibitor (Halt™ Protease and phosphatase single-use inhibitor Cocktail-100X, *Thermoscientific*). After centrifugation, pellets were resuspended in RIPA buffer for protein purification and incubated for 1 h at 4 °C. Protein concentrations were determined with the bicinchoninic acid (BCA) protein assay kit (*Pierce*). Samples (25 µg) of protein were resolved by SDS polyacrylamide gel electrophoresis (4–20% mini-Protean®TGX™ precast gels; *Biorad*) and transferred to nitrocellulose (Trans-Blot®Turbo™; *Biorad*). The following antibodies and suppliers were used: 1) *EMD Millipore*: anti-caspase 3 (Upstate 06–735), 2) *Cell Signaling Technology*: anti-phospho ERK1,2; anti-ERK1,2; anti-phospho AKT; anti-AKT; β-; anti-α-actinin; vinculin (E1E9V), 3) *Jackson ImmunoResearch*: horseradish peroxidase-conjugated anti-rabbit. Protein bands were visualized by enhanced chemiluminescence method using an ECL kit (SuperSignal™ West Pico chemiluminescent Substrate; *Thermo Scientific*™). Densitometry analysis was performed using Chemidoc™ (*Biorad*) and ImageJ software (*U. S. National Institutes of Health*). Signal intensities of each protein band were corrected with the corresponding value obtained for the loading controls (vinculin or α-actinin) and then normalized with the mean value obtained for the IR control conditions.

### Statistical analysis

Statistical analysis was performed only for  $n \geq 5$  independent experiments. Data (mean ± SD) were analyzed with ANOVA parametric test after confirmation of the normality of the population (Anderson–Darling Test for normal distribution). In case of non-conformity, non-parametric Kruskal–Wallis followed by Dunn's post hoc test for multiple comparison or Mann–Whitney for two groups were used. Data were analyzed with GraphPad Prism (version 8.3.0 for MacOs, GraphPad Software, San Diego, California USA, [www.graphpad.com](http://www.graphpad.com)). Statistical significance was noted as ns for  $p > 0.05$ , \* for  $p < 0.05$ , \*\* for  $p < 0.01$ , \*\*\* for  $p < 0.001$  and \*\*\*\* for  $p < 0.0001$ .

## Results

### Increased resistance of PPAR $\beta/\delta$ -primed MSC to H<sub>2</sub>O<sub>2</sub>-induced stress

Our previous study demonstrated in an ex vivo model of myocardial IR injury that MSC-induced cardioprotection was lost when PPAR $\beta/\delta$  expression in MSC was knocked out [46]. To determine the role of PPAR $\beta/\delta$  in MSC administered at reperfusion in an infarcted heart, we designed an in vitro protocol mimicking the stress received by MSC during transplantation and evaluated the properties of MSC pharmacologically activated or inhibited for PPAR $\beta/\delta$ .

First, we phenotypically and functionally characterized MSC used for the study as previously described [45]. We showed that MSC were negative for CD11b and CD45 and positive for markers expressed on MSC such as CD44 and Sca-1 (Additional file 1: Fig. 1A). After induction of MSC differentiation toward the three main mesenchymal lineages, MSC gave rise to: (1) chondrocytes as shown by the expression of *collagen type II (Col2)*, (2) adipocytes characterized by the expression of *ppary* and *lpl* and the formation of lipid droplets, and (3) osteoblasts characterized by the expression of *osteocalcin (OC)* and *alkaline phosphatase (ALP)* and Alizarin Red S staining (Additional file 1: Fig. 1B).

Then, to determine the role of PPAR $\beta/\delta$  on MSC challenged by IR injury, cultured MSC were submitted to an IR-simulated stress in vitro using various concentrations of H<sub>2</sub>O<sub>2</sub> (100, 250, 350, 500 and 750  $\mu$ M) for 4 h (see the protocol on Fig. 1a). Apoptosis quantification was assessed by the mean of specific DNA fragmentation measurement for the different groups of treatment. We found that specific DNA fragmentation was induced by H<sub>2</sub>O<sub>2</sub> as low as 100  $\mu$ M with an equivalent rate for all concentrations from 100 to 750  $\mu$ M (Fig. 1b). The concentration of 250  $\mu$ M of H<sub>2</sub>O<sub>2</sub> was chosen because it was the lowest dose providing the maximal effect compared to the control MSC ( $p^{****}$ ). To determine the role of PPAR $\beta/\delta$  on the resistance of MSC to H<sub>2</sub>O<sub>2</sub>, we pre-treated them with different concentrations (0.1 and 1  $\mu$ M) of PPAR $\beta/\delta$  antagonist and agonist for 24 h before the H<sub>2</sub>O<sub>2</sub>-stress induction (250  $\mu$ M for 4 h). MSC pre-treatment with the selective PPAR $\beta/\delta$  agonist GW0742 improved significantly the capacity of MSC to resist against H<sub>2</sub>O<sub>2</sub>-induced stress at 0.1  $\mu$ M ( $p^{****}$ ) and 1  $\mu$ M ( $p^{****}$ ). By contrast, the pre-treatment with the PPAR $\beta/\delta$  antagonist GSK0660 slightly protected the MSC against apoptosis at the concentration 0.1  $\mu$ M ( $p^*$ ) but not at 1  $\mu$ M ( $p^{ns}$  vs H<sub>2</sub>O<sub>2</sub> group, Fig. 1c). The enhanced resistance to apoptosis induced by PPAR $\beta/\delta$  agonist pre-treatment on MSC was confirmed by a significant increase in B-cell lymphoma-2 (*bcl2*) gene expression level, in particular after a pre-treatment with GW0742 at 0.1  $\mu$ M

( $p^{**}$ ). Conversely, the pre-treatment of MSC with 1  $\mu$ M antagonist (GSK0660) significantly reduced *bcl2* gene expression level compared to H<sub>2</sub>O<sub>2</sub>-treated MSC ( $p^{**}$ ; Fig. 1d). In addition, we validated the effect of GW0742 PPAR $\beta/\delta$  agonist pre-treatment on cultured MSC and found that the agonistic effect of GW0742 was associated with increased expression levels of *Angiopoietin Like 4 (angpl4)* target gene allowing to demonstrate the agonist functionality (Additional file 1: Fig. 2). Altogether, these results revealed that MSC activated for PPAR $\beta/\delta$  are protected from apoptosis induced by H<sub>2</sub>O<sub>2</sub> stress.

### PPAR $\beta/\delta$ -priming increases the anti-apoptotic effect of MSC on cardiomyocytes exposed to an IR-simulated stress

To determine the role of PPAR $\beta/\delta$  on the anti-apoptotic properties of MSC on stressed cardiomyocytes, we co-cultured in transwell systems naïve MSC and MSC activated or inhibited for PPAR $\beta/\delta$  with the H9c2 cardiomyoblast cell line, considered as a suitable model to study cardiac ischemia–reperfusion injury [47]. The protocol consisted on exposing H9c2 cardiomyoblasts to 350  $\mu$ M of H<sub>2</sub>O<sub>2</sub> for 4 h prior to their co-culture for 1 h with naïve MSC or MSC modulated for PPAR $\beta/\delta$  (Fig. 2a). We showed that MSC pre-treatment with 0.1  $\mu$ M of PPAR $\beta/\delta$  agonist GW0742 allowed to reveal a significant protective effect in H9c2 cells against H<sub>2</sub>O<sub>2</sub>-induced stress (MSC/0.1  $\mu$ M GSK0742 vs untreated H9c2,  $n=8$  per group;  $p^{****} < 0.0001$ ) that was not seen with naïve MSC (MSC vs untreated H9c2;  $n=8$  per group;  $p^{ns}=0.999$  and MSC/0.1  $\mu$ M GW0742 vs MSC,  $n=8$  per group;  $p^{**}=0.0058$ ; Fig. 2b). This anti-apoptotic effect was also observed in MSC pre-treated with 1  $\mu$ M GW0742 (MSC/1  $\mu$ M GW0742 vs untreated H9c2,  $n=8$  per group;  $p^{**}=0.0079$ ). Pre-treatment of MSC with the GSK0660 did not change MSC protective properties compared to naïve MSC (MSC/0.1  $\mu$ M and GSK0660 MSC/1  $\mu$ M GSK0660 vs MSC,  $n=8$  per group;  $p^{ns} > 0.999$ ). These results show that PPAR $\beta/\delta$  activation revealed and enhanced MSC anti-apoptotic properties on cardiomyocytes exposed to an IR-simulated stress in vitro.

### PPAR $\beta/\delta$ -priming increases the anti-apoptotic effect of MSC on endothelial cells exposed to an IR-simulated stress

Given the major importance of endothelial cells in the cardiac tissue repair process and their function, the enhancement of MSC anti-apoptotic properties on endothelial cells is critical. In order to evaluate the anti-apoptotic effect of PPAR $\beta/\delta$ -primed MSC, specific DNA fragmentation was quantified in EA.hy926 human endothelial cells stressed with H<sub>2</sub>O<sub>2</sub> and co-cultured with MSC pre-treated or not with GW0742

(See figure on next page.)

**Fig. 1** Decreased apoptosis in PPAR $\beta/\delta$ -primed MSC exposed to H<sub>2</sub>O<sub>2</sub> stress. **a** 48 h after the seeding step in complete medium, MSC were subjected to H<sub>2</sub>O<sub>2</sub>-induced oxidative stress during 4 h in minimal medium with serum deprivation. Pharmacological preconditioning of MSC using PPAR $\beta/\delta$  agonist or antagonist was performed 24 h before oxidative stress exposure. At the end of the protocol, cell death or relative gene expression was analyzed measuring specific DNA fragmentation by ELISA and transcript amounts by RT-qPCR. **b** Scatter plot and bars were presented for specific DNA fragmentation quantification measured in MSC treated with H<sub>2</sub>O<sub>2</sub> at various concentrations (0, 100, 150, 250, 500 and 750  $\mu$ M) for 4 h in minimal medium. Data (normalized to the value obtained for MSC without H<sub>2</sub>O<sub>2</sub>) were plotted as scatter dot blots and mean  $\pm$  SD for each group of treatment and compared using Kruskal–Wallis (Dunn's post hoc test) and were noted vs the 0  $\mu$ M H<sub>2</sub>O<sub>2</sub> group ( $n = 15$ , independent cultures) \*\* for  $p = 0.0003$  (100 group,  $n = 10$ ), \*\*\*\* for  $p < 0.0001$  (250 group,  $n = 12$ ), \*\* for  $p = 0.0011$  (350 group,  $n = 9$ ), \*\*\* for  $p = 0.0010$  (500 group,  $n = 9$ ) and \* for  $p = 0.0296$  (750 group,  $n = 3$ ). **c** Scatter plot and bars were presented for specific DNA fragmentation quantification measured in MSC pre-treated with GW0742 or GSK0660 at 0.1 and 1  $\mu$ M 24 h before H<sub>2</sub>O<sub>2</sub> exposure (250  $\mu$ M, 4 h). Data (normalized to the value obtained for MSC without H<sub>2</sub>O<sub>2</sub>) were plotted as scatter dot blots and mean  $\pm$  SD for each group of treatment and compared using ANOVA followed by the Tukey's post hoc test (normality test passed). P values vs MSC/H<sub>2</sub>O<sub>2</sub> were noted \*\*\*\* for  $p < 0.0001$  (MSC without H<sub>2</sub>O<sub>2</sub>), vs 0.1  $\mu$ M GW0742 and vs 1  $\mu$ M GW0742, \* for  $p = 0.0402$  (MSC/H<sub>2</sub>O<sub>2</sub> vs 0.1  $\mu$ M GSK0660) and ns for  $p = 0.0582$  (MSC/H<sub>2</sub>O<sub>2</sub> vs 1  $\mu$ M GSK0660). In each case,  $n = 8$  independent cultures were evaluated. **d** At the end of the protocol, mRNA expression levels in untreated or preconditioned MSC exposed to an H<sub>2</sub>O<sub>2</sub> were assessed by RT-qPCR for *Bcl-2*: data (mean  $\pm$  SD;  $n = 8$  for each group) normalized to the control values were compared using ANOVA and the Tukey's post hoc test (normality test passed). P values vs MSC/H<sub>2</sub>O<sub>2</sub> were noted for \*\*\* for  $p = 0.0001$  (MSC without H<sub>2</sub>O<sub>2</sub>), \*\* for  $p = 0.0015$  (GW0742 0.1  $\mu$ M), ns for  $p = 0.2379$  (GW0742 1  $\mu$ M), ns for  $p = 0.8168$  (GSK0660 0.1  $\mu$ M) and \*\* for  $p = 0.0076$  (GSK0660 1  $\mu$ M)

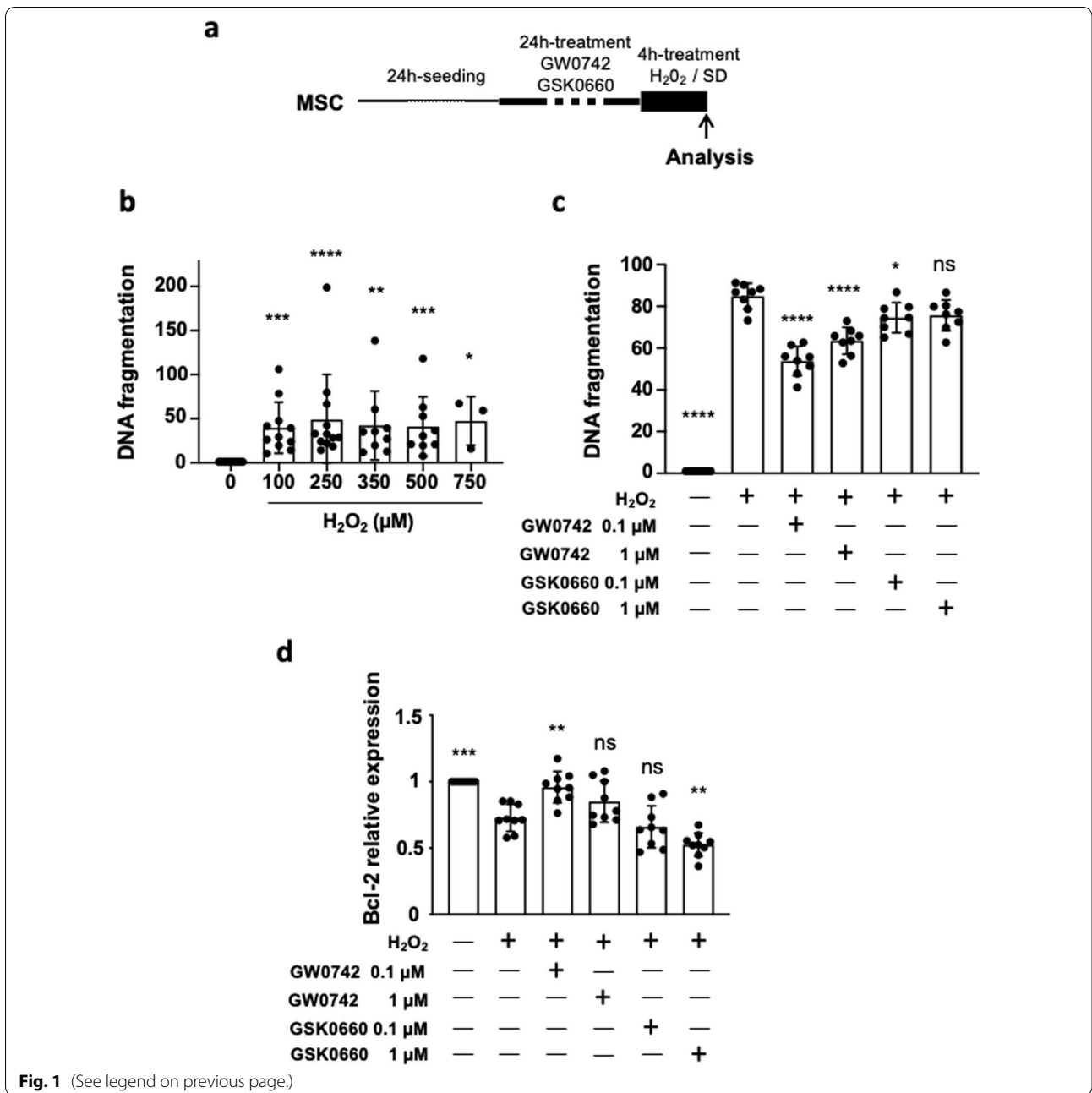
(PPAR $\beta/\delta$  agonist). Figure 3 shows that MSC priming with 0.1  $\mu$ M of GW0742 allowed to reveal the protective effect of MSC on H<sub>2</sub>O<sub>2</sub>-stressed endothelial cells (MSC vs MSC/GW0742 0.1  $\mu$ M,  $p^* = 0.0347$ ). MSC priming with 1  $\mu$ M GW0742 was not efficient enough to improve significantly MSC anti-apoptotic effects despite a great tendency (MSC vs MSC/GW0742 1  $\mu$ M,  $p^{ns} = 0.3957$ ). Indeed, MSC primed with 0.1  $\mu$ M GW0742, by contrast to naïve MSC that were ineffective on their own (MSC vs untreated EA.hy926,  $p > 0.999$ ), provided a significant protective effect on endothelial cells exposed to an H<sub>2</sub>O<sub>2</sub>-induced oxidative stress (untreated EA.hy926 vs MSC/GW0742 0.1  $\mu$ M,  $p^{**} = 0.0061$ ). Of note, pre-treatment of MSC with the GSK0660 (PPAR $\beta/\delta$  antagonist) did not change MSC protective properties compared to naïve MSC (MSC/GSK0660 0.1  $\mu$ M and MSC/1  $\mu$ M GSK0660 vs MSC,  $n = 8$  per group;  $p > 0.999$ ). These results show that PPAR $\beta/\delta$  activation unveils and potentiates MSC anti-apoptotic properties on endothelial cells exposed to an IR-simulated stress in vitro.

#### **The cardioprotective effect of MSC administered during reperfusion in an ex vivo model of myocardial IR injury depends on PPAR $\beta/\delta$**

In order to evaluate the protective effect of MSC in an ex vivo model of myocardial IR injury, MSC were administered during the reperfusion phase at various concentrations (2500; 5000 and 10,000 cells/mL in a Tyrode solution) in isolated hearts subjected to global ischemia (see protocol, Fig. 4a). MSC showed a U-shaped dose-response curve with an optimal efficacy at 5000 cells/mL which was similar to that provided by the PostC (ischemic postconditioning) stimulus considered as the positive control in our experiment (30.27  $\pm$  5.89, for MSC

5000,  $n = 12$  vs 46.51  $\pm$  6.28,  $n = 11$  for IR;  $p^{***} = 0.0004$  and vs 28.13  $\pm$  4.69,  $n = 7$  for PostC;  $p^{ns} > 0.999$ ) (Fig. 4b). In addition, neither the 2500 cells/mL dose (38.64  $\pm$  5.36,  $n = 11$  vs 46.51  $\pm$  6.28,  $n = 11$  for IR;  $p^{ns} = 0.80$ ) nor the largest one tested, 10,000 cells/mL (50.28  $\pm$  11.09,  $n = 6$  for MSC 10,000 vs 46.51  $\pm$  6.28,  $n = 11$  for IR;  $p^{ns} > 0.999$ ) produced a significant decrease in infarct size compared to IR.

Since, we demonstrated in previous studies the pivotal role of PPAR $\beta/\delta$  expression on MSC functions including their immunoregulatory properties, we addressed here its role on the cardioprotective potential of MSC [48–50]. To that end, MSC were pre-treated with either PPAR $\beta/\delta$  agonist or antagonist prior to their administration in the ex vivo model of IR injury. According to this result, we investigated whether the use of GW0742 PPAR $\beta/\delta$  agonist at various doses (0.1 and 1  $\mu$ M) was associated with an improvement of the cardioprotection afforded by MSC administered at the lower dose (2500 cells/mL) that was not protective by itself (Fig. 4c). We showed that pre-treating MSC with 0.1 and 1  $\mu$ M PPAR $\beta/\delta$  agonist induced their cardioprotective effect (46.51  $\pm$  6.28,  $n = 11$  for IR vs 34.65  $\pm$  5.36,  $n = 8$  for MSC/0.1  $\mu$ M GW0742;  $p^* = 0.0309$  and vs 25.77  $\pm$  4.68,  $n = 7$  for MSC/1  $\mu$ M GW0742;  $p^{****} < 0.0001$ ). Pre-treating the cells with GW0742 (1  $\mu$ M) before administration at 2500 cells/mL allowed to induce the same cardioprotective effect as the one observed using 5000 cells/mL naïve MSC ( $p^{ns} > 0.999$ ; Fig. 4d). Figure 4e shows that the cardioprotection was abolished when MSC (5000 cells/mL) were pre-treated during 24 h with GSK0660 (1  $\mu$ M) prior to their administration during the reperfusion phase (40.22  $\pm$  7.24,  $n = 11$  for MSC/GSK0660 vs 46.51  $\pm$  6.28,  $n = 11$  for IR,  $p^{ns} = 0.35467$  and vs 30.27  $\pm$  5.89,  $n = 12$  for MSC;  $p^* = 0.022$ ).

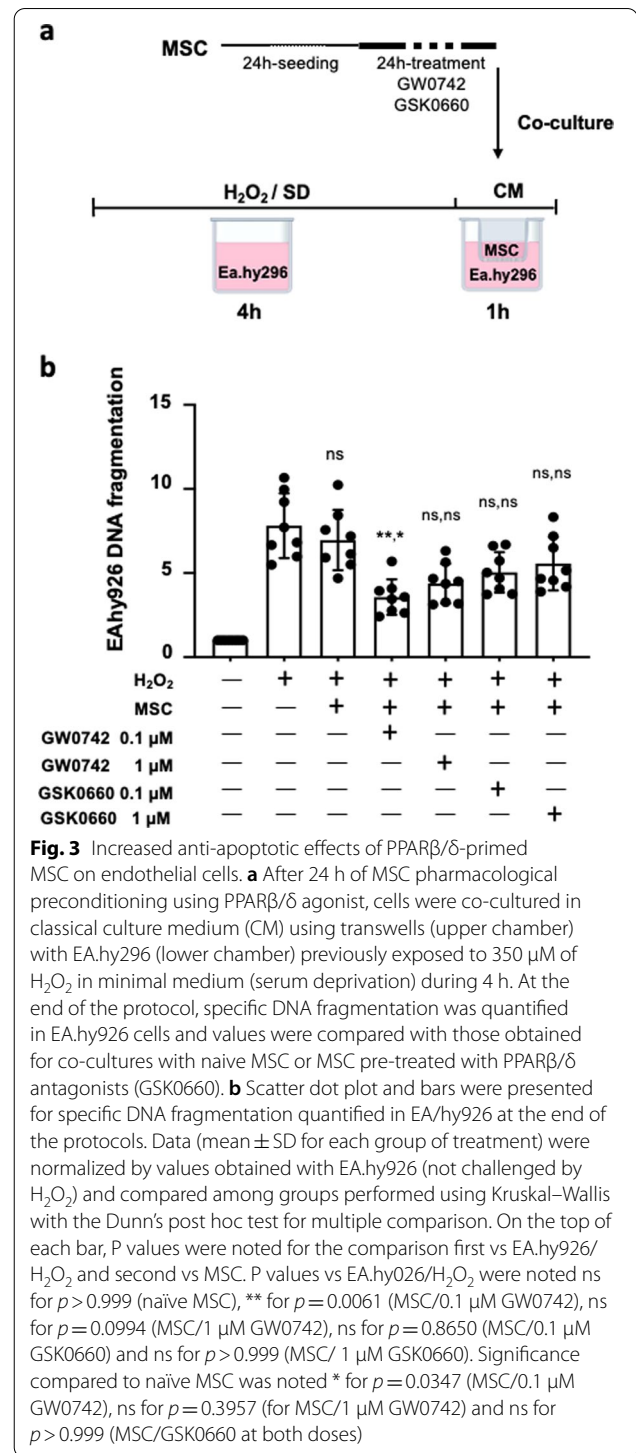
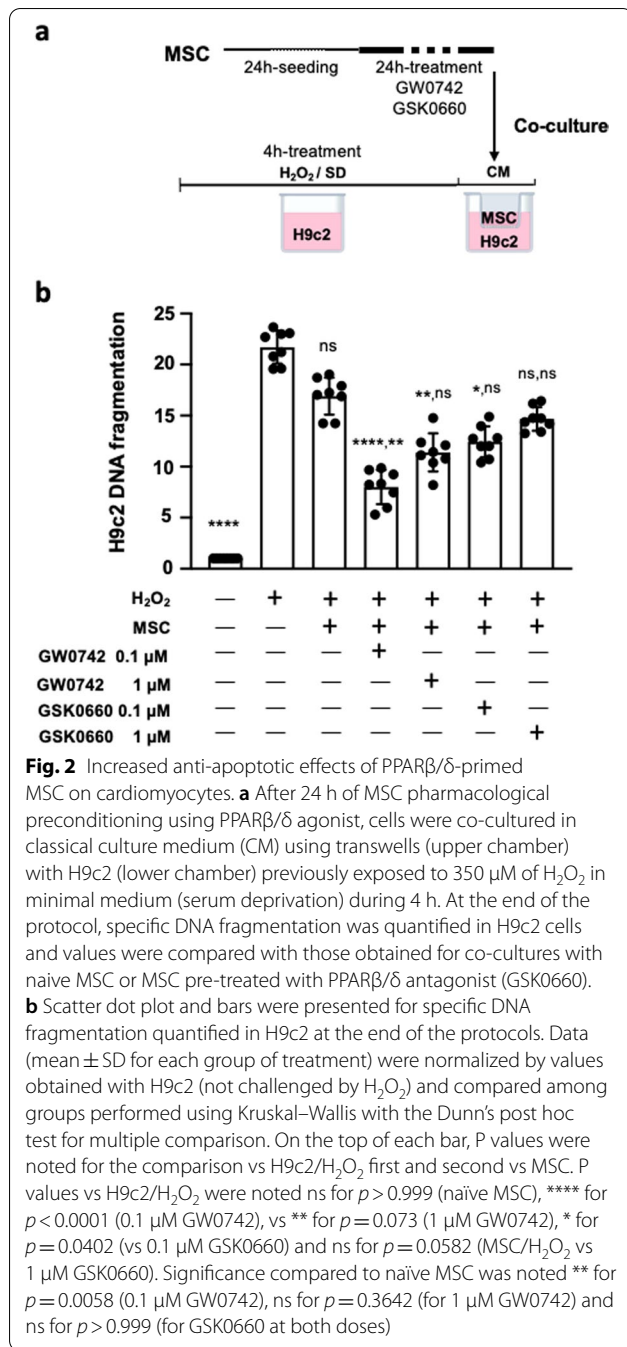


This improvement of the therapeutic effect of PPARβ/δ-primed MSC as compared to their naïve counterpart was associated with an increased number of MSC in the microvessels in the infarcted myocardial tissue as assessed by immunohistology experiments using DiI-labeled MSC (Fig. 4f).

**PPARβ/δ-priming increases the cardioprotective effects of MSC ex vivo by decreasing caspase 3 activation in IR heart**

The potent anti-apoptotic effect of the PPARβ/δ-primed MSC on cardiomyocytes was further confirmed on whole hearts. Western blot analysis in hearts subjected ex vivo to IR injury allowed to show that pre-treating MSC during 24 h with the GW0742 PPARβ/δ agonist (1 μM; see protocol in Fig. 5a) allowed to reveal a significant inhibition of caspase 3 cleavage compared to the IR condition ( $p^* = 0.0303$  versus IR) that was not observed with naïve





MSC ( $p^{ns} = 0.4986$  vs IR; Fig. 5b). By contrast, the administration of MSC inhibited for PPARβ/δ in the ex vivo IR heart at reperfusion, did not reduce caspase 3 activation as compared to the IR control condition (data not shown).

In addition, evaluation of the phosphorylation patterns of AKT (protein kinase B) and ERK1/2 (Extracellular signal-regulated kinase) pro-survival kinases showed a significantly increased phosphorylation pAkt/Akt ratio in

MSC-treated versus non-treated IR hearts (Fig. 5c, d) when MSC were pre-treated with GW0742 PPARβ/δ agonist (1 μM) prior to their administration during reperfusion. By contrast, there was no change in the pERK1/2

/ERK1/2 ratio when naïve MSC were administered in the post-ischemic phase of the IR protocol.

## Discussion

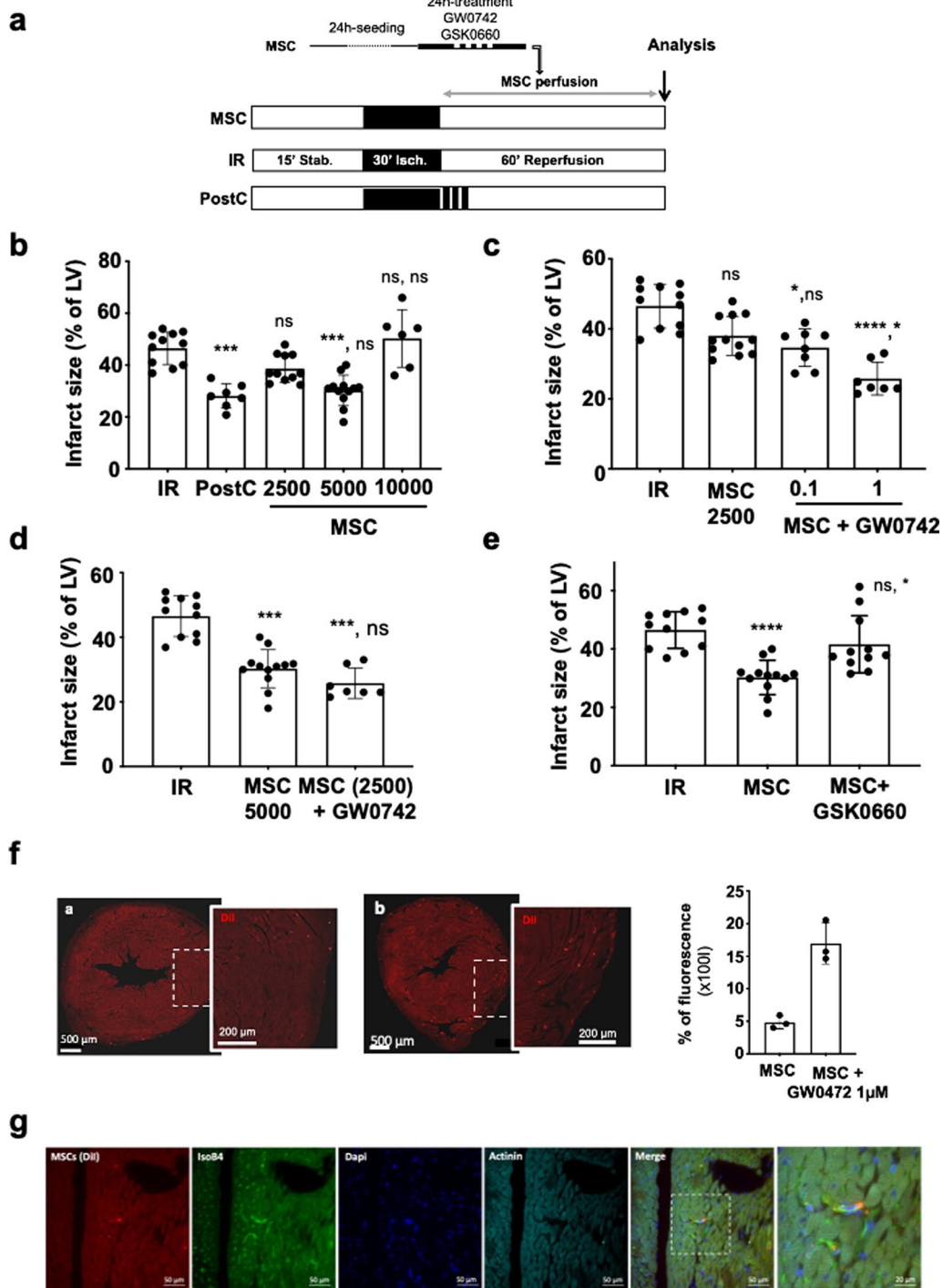
Our study is the first demonstration that the priming of murine MSC using an agonist of PPAR $\beta/\delta$  allows to protect them from apoptosis induced by an H<sub>2</sub>O<sub>2</sub>-induced stress and to enhance their anti-apoptotic and cardioprotective properties against myocardial IR injury ex vivo. First, we evidenced in vitro that PPAR $\beta/\delta$  priming allowed to increase MSC resistance against H<sub>2</sub>O<sub>2</sub>-induced oxidative stress as assessed by decreased apoptosis rate and by an increased amount of *bcl2* transcripts. Then, we observed that PPAR $\beta/\delta$ -primed MSC had a more potent anti-apoptotic effect on both cardiomyocytes and endothelial cells than naïve MSC. Interestingly, the priming of MSC with a PPAR $\beta/\delta$  agonist before their injection in an ex vivo model of myocardial IR injury allowed them to confer significant cardioprotective properties not observed with naïve MSC when evaluated in the same model. Importantly, PPAR $\beta/\delta$ -priming reduced by two the number of MSC administered to obtain the optimal efficiency in decreasing infarct size. This enhanced short-term cardioprotection, within 1 h after reperfusion, was also associated with an increased number of MSC detected in the ventricular wall and also enhanced anti-apoptotic effects as assessed by *western blot* analysis of caspase 3 activation. Accordingly, the

phosphorylation ratio of AKT pro-survival kinase was increased in IR hearts treated by PPAR $\beta/\delta$ -primed versus naïve MSC. Of note, the cardioprotective effects of MSC were lost when pre-treated with a PPAR $\beta/\delta$  antagonist prior to their administration, confirming our previous results using MSC derived from PPAR $\beta/\delta$  knockout mice.

Reperfusion, even if considered as a double-edged sword, is the only treatment recommended for patients with acute myocardial infarction [51]. Despite obvious beneficial effects in limiting the ischemic insult, revascularization of the culprit artery leads to an abrupt return of oxygen in the threatened myocardial tissue and generates subsequent deleterious side effects. Lethal reperfusion injury corresponds to the death of cardiac cells viable at the end of the ischemic period occurring at the onset of reperfusion and mainly related to apoptotic death [52, 53]. Regarding MSC-based therapy against myocardial IR injury, MSC undergo apoptosis in particular when they are transplanted in vivo in injured tissues, such as damaged hearts after IR injury [54]. Several strategies were developed to inhibit apoptosis of MSC after in vivo administration to help them survive hypoxia-reoxygenation injury, such as heat-shock treatment [55] or a hypoxia-regulated Heme oxygenase-1 (HO-1) vector modification [56] of MSC. Among the factors impacting negatively the therapeutic effect of MSC, the poor survival rate of transplanted cells is of major importance. So, MSC resistance to oxidative stress should be

(See figure on next page.)

**Fig. 4** Increased cardioprotection in hearts treated by PPAR $\beta/\delta$ -primed MSC. **a** C57Bl6 mouse hearts were mounted on a Langendorff system and subjected to IR injury. The ex vivo protocol comprises a 15 min-period of stabilization, followed by 30 min of global ischemia achieved by stopping the flow through the aorta (no-flow). Reperfusion was achieved by restoring the Tyrode perfusion during 60 min (IR group). For the PostC group, a postconditioning stimulus comprising 3 cycles of 1 min ischemia-1 min reperfusion was applied at the onset of reperfusion. In the MSC group, reperfusion was achieved with a solution of MSC cells prepared in a Tyrode buffer at various concentrations (2500; 5000 or 10,000 cells/mL). At the end of the protocol, hearts were dedicated to infarct size (TTC-staining method; **b–e**) or immunochemistry (**f**) analysis. **b** Scatter plot and bars (mean  $\pm$  SD) were represented for Infarct size in IR ( $n = 11$ ), PostC ( $n = 7$ ), MSC 2500 cells/mL ( $n = 11$ ), MSC 5000 cells/mL ( $n = 10$ ), and MSC 10,000 cells/mL ( $n = 10$ ); Statistical analysis was performed using Kruskal–Wallis with the Dunn's post hoc test for multiple comparison. Statistical significance compared to IR is noted \*\*\* for  $p = 0.0004$  (PostC vs IR), ns for  $p = 0.8021$  (MSC 2500 vs IR), \*\*\* for  $p = 0.0004$  (MSC 5000 vs IR), ns for  $p > 0.99$  (MSC 10,000 vs IR) and for comparisons vs PostC: ns for  $p = 0.097$  (MSC 2500), ns for  $p > 0.9999$  (MSC 5000), \*\* for  $p = 0.011$  (MSC 10,000). **c** Scatter plot and bars (mean  $\pm$  SD) were represented for Infarct size in IR ( $n = 11$ ), MSC 2500 cells/mL ( $n = 12$ ), MSC (2500 cells/mL) + GW0742 0.1  $\mu$ M ( $n = 8$ ), MSC (2500 cells/mL) + GW0742 1  $\mu$ M ( $n = 7$ ) and MSC (2500 cells/mL). Statistical analysis was performed by Kruskal–Wallis followed by the Dunn's post-test. Statistical significance versus IR was noted ns for  $p = 0.0881$  (MSC), \* for  $p = 0.0309$  (MSC/GW0742 0.1  $\mu$ M) and \*\*\*\* for  $p < 0.0001$  (MSC/GW0742 1  $\mu$ M) and versus MSC: ns for  $p > 0.999$  (MSC/GW0742 0.1  $\mu$ M), \* for  $p = 0.0429$  (MSC/GW0742 1  $\mu$ M). **d** Scatter plot and bars (mean  $\pm$  SD) were represented for Infarct size in IR ( $n = 11$ ), MSC 5000 cells/mL ( $n = 12$ ) and MSC (2500 cells/mL) / 1  $\mu$ M GW0742 ( $n = 7$ ). Statistical analysis was performed by Kruskal–Wallis followed by the Dunn's post test. Statistical significance was noted \*\*\* for  $p = 0.001$  (MSC 5000 vs IR), \*\*\* for  $p = 0.0003$  (MSC 2500/GW0742 vs IR) and ns for  $p > 0.9999$ . **e** Scatter plot and bars (mean  $\pm$  SD) were represented for Infarct size in IR ( $n = 11$ ), MSC 5000 cells/mL ( $n = 12$ ), MSC (5000 cells/mL) + GSK0660 ( $n = 11$ ). Statistical analysis was performed by ANOVA (since the normality test passed) followed by the Tukey's multiple comparisons test. Statistical significance was noted \*\*\*\* for  $p < 0.0001$  (MSC vs IR), ns for  $p = 0.3467$  (GSK0660 vs IR) and \* for  $p = 0.0220$  (MSC vs GSK0660). **f** Left panel: Representative pictures of microscopic observations for an MSC-treated heart section with corresponding enlarged immunostaining images (Original magnification:  $\times 40$  oil immersion) showing DI-I labelled (**a**) MSC and (**b**) MSC pre-treated with GW0742 1  $\mu$ M in left ventricle collected 60 min after reperfusion (same time than for infarct size evaluation). Right panel: Scatter plots for the % of fluorescence measured in each slice of MSC versus MSC + GW0742 1  $\mu$ M injected hearts ( $n = 3$  for each group). **g** Representative pictures of microscopic observations of immunostaining from MSC-treated LV sections showing MSC (Dil, red labeling), vessels (IsoB4, green), cell nuclei (DAPI, blue) and cardiac actinin staining (anti-actinin antibody, cyan). The last picture represents the merge of the co-immunostaining showing that MSC are detected in microvessels at one hour of reperfusion. Original magnification:  $\times 40$  oil immersion; Scale bars are indicated on each picture



**Fig. 4** (See legend on previous page.)

increased to improve their therapeutic efficacy against IR injury [57]. Here, we demonstrate for the first time that PPAR $\beta/\delta$ -priming of MSC enhanced their capacity to be protected against apoptosis when they were subjected to an H<sub>2</sub>O<sub>2</sub>-induced stress revealing that PPAR $\beta/\delta$ -priming

is able to increase MSC resistance to oxidative stress in vitro. These results are in line with the anti-apoptotic effects of PPAR $\beta/\delta$  stimulation described, in vitro, on several cell types including endothelial cells, H9C2 cardiomyoblasts, neurons or keratinocytes [41–43]. In

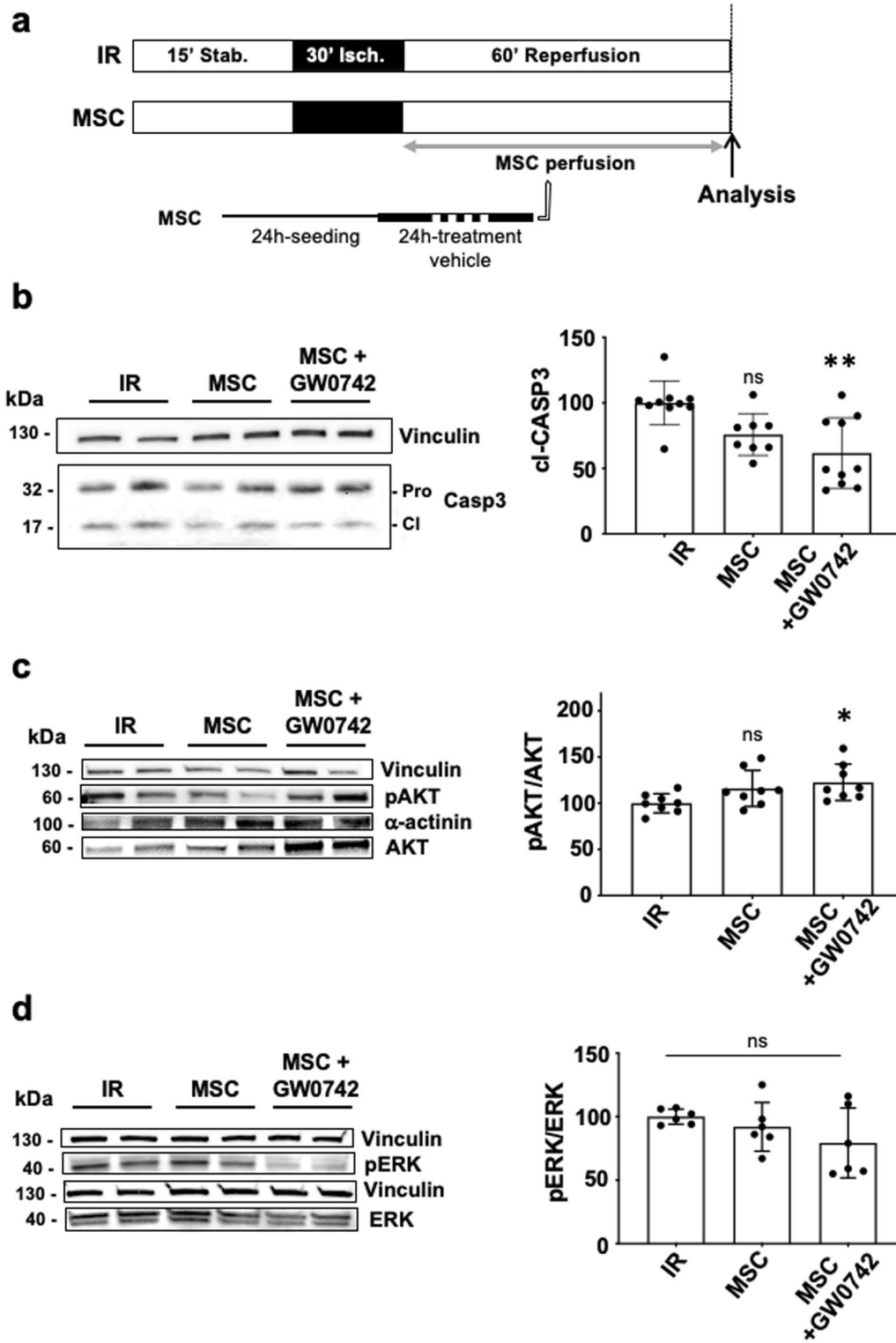
endothelial cells, PPAR $\beta/\delta$  anti-apoptotic properties were associated to an increased protection against oxidative stress [41, 42]. In the present study, RT-qPCR experiments have shown that MSC-increased resistance to H<sub>2</sub>O<sub>2</sub>-induced stress upon PPAR $\beta/\delta$ -priming *i.e.*, stimulation of the receptor by an agonist, was associated with an increased amount of anti-apoptotic *bcl2* gene transcripts. Other anti-apoptotic mechanisms have also been highlighted in other cell types following the activation of PPAR $\beta/\delta$  receptors, such as the activation of AKT1 pathway. Gamdzyk's team has shown in the context of neuronal stress that the activation of PPAR $\beta/\delta$  by its agonist GW0742 leads to the inhibition of the pro-apoptotic pathway ASK1/p38 MAPK [58]. In the context of PPAR $\beta/\delta$  MSC priming, the decreased rates of apoptosis after an H<sub>2</sub>O<sub>2</sub>-induced stress could be of major importance to explain the increase in their therapeutic properties. Indeed, we demonstrate for the first time that PPAR $\beta/\delta$ -priming of MSC was associated with their enhanced anti-apoptotic potential both *in vitro* and *ex vivo*. H9C2, described as a suitable model to study cardiac ischemia–reperfusion injury *in vitro* [47], were subjected to an H<sub>2</sub>O<sub>2</sub>-induced stress prior to be co-cultured with MSC. Then, specific DNA fragmentation was measured as a hallmark of apoptosis in H9C2 co-cultured with PPAR $\beta/\delta$ -primed or naïve MSC. While approaches to improve MSC-based anti-apoptotic effects on cardiomyocytes have shown promising results both *in vitro* and *in vivo* [30, 32, 33, 59], very few studies have investigated the anti-apoptotic paracrine effects mediated by MSC on endothelial cells. Only data on tunneling nanotubes [60] and extracellular vesicles derived from MSC have been reported to repress high glucose (HG) [61] or serum deprivation-induced apoptosis [62, 63]. Our present results obtained on a human endothelial cell line reveal, for the first time, that MSC pharmacologically preconditioned are able to provide an enhanced paracrine anti-apoptotic effect. *Ex vivo*, a strong pro-apoptotic stress was assessed by *western blot* analysis of cleaved caspase 3 expression in isolated hearts subjected to severe IR injury showing a 46.5%-mean infarct size (expressed as a % of the LV, SHAM,  $n=6$  vs IR,  $n=10$ ;  $p^{**}=0.0047$ ; data not shown). MSC-induced cardioprotection was associated with a decreased amount of cleaved (activated) caspase

3 measured in the left ventricle as already reported for MSC injected in the injured myocardium [64]. MSC priming with PPAR $\beta/\delta$  agonist exacerbated the anti-apoptotic properties, allowing in particular to unmask potent anti-apoptotic effects that were absent when using naïve MSC at the same dose. Targeting regulated cell death pathways, in particular apoptosis, after an ischemic event, appears as a main strategy to prevent reperfusion injury and to limit infarct size [7–16]. Anti-apoptotic strategies allow to inhibit specifically reperfusion-induced apoptotic burst of cell death, providing long-term cardioprotective effects, a strategy evidenced recently by our group in the mouse heart [65]. Moreover, considering vascular cells as a major target for cardioprotection is an important concept that could account for the failure in translation reported for cardioprotective studies against IR injury in which the role of the coronary circulation (in the myocardium) has been neglected up to now [66, 67].

In terms of cardioprotection, MSC administered during the reperfusion phase provided a 35%-decrease in infarct size. Regarding their concentration, we observed a U-shaped curve clearly showing that MSC-induced cardioprotection is dose-dependent as reported in clinical trials. Indeed, in AMI patients, a recent study reported that only doses less than  $10^7$  MSC administered within 1 week after AMI enhanced the systolic function of left ventricle whereas administration of more than  $10^7$  cells had the opposite effect [68]. In agreement with this study, a U-shaped curve for MSC cardioprotective effects in the treatment of chronic advanced ischemic heart failure was also reported indicating reduced outcomes at the highest dose of cells [69]. The U-shape curve in our study allowed to identify the optimal dose providing a maximal cardioprotective effect (5000 cells/mL administered during 60 min of reperfusion). The corresponding number of cells that was administered *per* heart was around  $7.5 \times 10^5$  cells, which corresponds to a relatively low dose compared to other reports in the literature. The use of a higher dose of MSC induced the loss of cardioprotection. Interestingly, we observed also that MSC primed with a PPAR $\beta/\delta$  agonist allowed to decrease the dose of MSC injected in the heart by half. Indeed, in our study, the cardioprotective effect observed *ex vivo* using

(See figure on next page.)

**Fig. 5 a** C57Bl6 mouse hearts were mounted on a Langendorff system. The *ex vivo* protocol comprises a 15 min-period of stabilization, followed by 30 min of global ischemia achieved by stopping the flow through the aorta (no-flow). Reperfusion was achieved by restoring the Tyrode perfusion during 60 min (IR group). In the MSC group, reperfusion was achieved with a solution of MSC cells prepared in a Tyrode buffer (2500 cells/mL) pre-treated or not by GW0742 at 1  $\mu$ M. At the end of the protocol, hearts were collected and proteins extracted for further analysis. **b, c, d** *Western blot* analysis was performed from LV protein extracts from IR non-treated or MSC-treated murine IR hearts (*ex vivo*) with or without a pharmacological pre-treatment. Scatter dot blots and mean  $\pm$  SD were plotted for Cleaved-caspase 3 ( $p^{**}=0.064$  for IR,  $n=10$  vs MSC/GW0742,  $n=10$ ), for pAKT/AKT ( $p^*=0.0385$  for IR,  $n=8$  vs MSC/GW0742,  $n=8$ ) and for pERK/ERK ( $p^{ns}=0.2476$  for IR,  $n=6$  vs MSC/GW0742,  $n=6$ ). Representative gel blots are presented for each protein for the three conditions (IR, MSC and MSC + GW0742). Vinculin or  $\alpha$ -actinin were used as protein loading control. Data were compared using non parametric Kruskal–Wallis test (Dunn's post hoc test)



**Fig. 5** (See legend on previous page.)

PPAR $\beta/\delta$ -primed MSC injected at a dose of  $3.75 \times 10^5$  MSC was similar to that obtained with naive MSC administered at the optimal dose ( $7.5 \times 10^5$  MSC).

Inhibition of PPAR $\beta/\delta$  activity prior to their administration *ex vivo* in IR injured hearts provided the same results obtained in our previous study using MSC derived from PPAR $\beta/\delta$  knockout mice that failed to protect myocardial tissue against IR injury *ex vivo* [70]. By contrast, MSC priming with GW0742 PPAR $\beta/\delta$  agonist allowed to unmask and potentiate their cardioprotective effects. For the optimal dose of GW0742 agonist used to prime MSC, a shift from 0.1 to 1  $\mu\text{M}$  was observed between *in vitro* and *ex vivo* results. It seems reasonable to speculate that this difference may be due to the fact, that the *ex vivo* system integrates several cell types including fibroblast, endothelial but also resident immune cells and that effect of MSC might differ depending on the cell type with which they interact.

## Conclusions

Our study provides evidence for an enhanced MSC-based cell product inducing cardioprotection against IR injury with potent anti-apoptotic effects and an increased number of surviving MSC in the injured myocardium, one hour after the onset of reperfusion.

These results could be of major interest in the clinical setting to improve MSC efficacy for the cardioprotection of injured myocardium in AMI patients.

## Abbreviations

AKT: Protein kinase B; ALP: Alkaline phosphatase; AMI: Acute myocardial infarction; angp14: Angiopoietin like 4; bcl2: B-cell lymphoma-2; bFGF: Basic fibroblast growth factor; BCA: Bicinchoninic acid; Col2: Collagen type II; cl-CASP3: Cleaved caspase 3; CM: Culture medium; DMEM: Dulbecco's modified Eagle's medium; ERK1/2: Extracellular signal-regulated kinase; EV: Extracellular vesicles; FBS: Fetal bovine serum; HO1: Heme oxygenase-1; IR: Ischemia-reperfusion; MSC: Mesenchymal Stromal Cells; MEM: Minimum essential medium; min: Minutes; OC: Osteocalcin; PPAR: Peroxisome proliferator-activated receptors; PBS: Phosphate Buffer Saline; PostC: Postconditioning; RXR: Retinoid X receptor; RT-qPCR: Reverse Transcriptase-quantitative Polymerase Chain Reaction; RPS9: Ribosomal protein S9.

## Supplementary Information

The online version contains supplementary material available at <https://doi.org/10.1186/s13287-022-02840-0>.

**Additional file 1.** Supplementary figures.

## Acknowledgements

The authors wish to thank Laura Gallot for her technical assistance for *ex vivo* experiments and Carlota Fernandez Rico for building figures from Western-blot. The authors are grateful to Biocampus facilities and in particular, Steeve Thirard, Elodie Belan and Karim Mesbah for animal care (iExplore/RAM), Julio Mateos-Langerak and Chamrouen Sar for assistance with microscopy (MRI) as well as Nelly Pirot for histological preparations (RHEM).

## Author contributions

FD and SBL designed the entire project and experiments of this interdisciplinary study and bears the responsibility of corresponding authorship. CP, JN and CJ contributed to design and interpret the data of the work. CS, RCL, CB, SB, PLC, AV, KK, NN, SK, CT and GT performed the experiments and analyzed the results. CS and RCL have made equal contributions as first author: CS performed the *ex vivo* experiments and western blot analysis and RCL performed *in vitro* experiments. FD and SBL wrote the manuscript with the input of CP, JN and CJ. All authors read and approved the final manuscript.

## Funding

This work was supported by Inserm, and the University of Montpellier (FD, SBL, CJ), by CNRS (SBL) as well as by Naresuan University (NN, SK). We also thank the "Fonds Marion et Elisabeth Brancher" for financial support of this project (CS PhD fellowship), la "Fondation pour la Recherche Médicale" (RCL, Post-doctoral fellow in France, no. SPF202005011936), the PHC program of Campus France (project number no. 44928QF; SK and SBL) as well as the "Agence Nationale de Recherche" grant for the LabEx ICST ANR grant [ANR-11-LABX-0015; SBL, JN, AV, CB, CP] and PPAR-OA ANR grant [ANR-18-CE18-0010; FD, RCL, CJ].

## Availability of data and materials

The datasets during and/or analyzed during the current study available from the corresponding author on reasonable request.

## Declarations

### Ethics approval and consent to participants

All *ex vivo* protocols were approved by the SBEA (Structure Bien-être Animal) committee from the Institute according to the European directive 2010/63/EU and the french ministerial regulation of February 01, 2013.

### Competing interests

The authors declare no competing interests.

### Author details

<sup>1</sup>IGF, Université de Montpellier, CNRS, INSERM, 141 rue de la Cardonille, 34094 Montpellier Cedex 5, France. <sup>2</sup>IRMB, Univ Montpellier, INSERM, Montpellier, France. <sup>3</sup>IBRU, Department of Cardio-Thoracic Technology, Faculty of Allied Health Sciences, Naresuan University, Phitsanulok, Thailand. <sup>4</sup>Laboratorio de Inmunología Celular y Molecular, Facultad de Medicina, Universidad de los Andes, Santiago, Chile. <sup>5</sup>IMPACT, Center of Interventional Medicine for Precision and Advanced Cellular Therapy, Santiago, Chile. <sup>6</sup>School of Allied Health Sciences, Walailak University, Nakhon Si Thammarat, Thailand. <sup>7</sup>Département de Cardiologie Interventionnelle, Clinique du Millénaire, Montpellier, France. <sup>8</sup>CHU Montpellier, 34295 Montpellier, France.

Received: 6 December 2021 Accepted: 25 March 2022

Published online: 23 April 2022

## References

- Braunwald E. Myocardial reperfusion, limitation of infarct size, reduction of left ventricular dysfunction, and improved survival. Should the paradigm be expanded? *Circulation*. 1989;79:441–4.
- Gottlieb RA, Burleson KO, Kloner RA, Babior BM, Engler RL. Reperfusion injury induces apoptosis in rabbit cardiomyocytes. *J Clin Invest*. 1994;94:1621–8. <https://doi.org/10.1172/JCI117504>.
- Kajstura J, et al. Apoptotic and necrotic myocyte cell deaths are independent contributing variables of infarct size in rats. *Lab Invest J Tech Methods Pathol*. 1996;74:86–107.
- Roubille F, et al. Delayed postconditioning in the mouse heart *in vivo*. *Circulation*. 2011;124:1330–6. <https://doi.org/10.1161/CIRCULATIONAHA.111.031864>.
- Logue SE, Gustafsson AB, Samali A, Gottlieb RA. Ischemia/reperfusion injury at the intersection with cell death. *J Mol Cell Cardiol*. 2005;38:21–33. <https://doi.org/10.1016/j.yjmcc.2004.11.009>.
- McCully JD, Wakiyama H, Hsieh YJ, Jones M, Levitsky S. Differential contribution of necrosis and apoptosis in myocardial ischemia-reperfusion

- injury. *Am J Physiol Heart Circ Physiol*. 2004;286:H1923-1935. <https://doi.org/10.1152/ajpheart.00935.2003>.
7. Holly TA, et al. Caspase inhibition reduces myocyte cell death induced by myocardial ischemia and reperfusion in vivo. *J Mol Cell Cardiol*. 1999;31:1709-15. <https://doi.org/10.1006/jmcc.1999.1006>.
  8. Saraste A, et al. Apoptosis in human acute myocardial infarction. *Circulation*. 1997;95:320-3. <https://doi.org/10.1161/01.cir.95.2.320>.
  9. Chen Z, Chua CC, Ho YS, Hamdy RC, Chua BH. Overexpression of Bcl-2 attenuates apoptosis and protects against myocardial I/R injury in transgenic mice. *Am J Physiol Heart Circ Physiol*. 2001;280:H2313-2320.
  10. Miao W, Luo Z, Kitsis RN, Walsh K. Intracoronary, adenovirus-mediated Akt gene transfer in heart limits infarct size following ischemia-reperfusion injury in vivo. *J Mol Cell Cardiol*. 2000;32:2397-402. <https://doi.org/10.1006/jmcc.2000.1283>.
  11. Piot CA, Martini JF, Bui SK, Wolfe CL. Ischemic preconditioning attenuates ischemia/reperfusion-induced activation of caspases and subsequent cleavage of poly(ADP-ribose) polymerase in rat hearts in vivo. *Cardiovasc Res*. 1999;44:536-42.
  12. Roubille F, et al. Myocardial expression of a dominant-negative form of Daxx decreases infarct size and attenuates apoptosis in an in vivo mouse model of ischemia/reperfusion injury. *Circulation*. 2007;116:2709-17. <https://doi.org/10.1161/CIRCULATIONAHA.107.694844>.
  13. Yaoita H, Ogawa K, Maehara K, Maruyama Y. Attenuation of ischemia/reperfusion injury in rats by a caspase inhibitor. *Circulation*. 1998;97:276-81.
  14. Boisguérin P, et al. A novel therapeutic peptide targeting myocardial reperfusion injury. *Cardiovasc Res*. 2020;116:633-44. <https://doi.org/10.1093/cvr/cvz145>.
  15. Boisguérin P, et al. Systemic delivery of BH4 anti-apoptotic peptide using CPPs prevents cardiac ischemia-reperfusion injuries in vivo. *J Control Release*. 2011;156:146-53. <https://doi.org/10.1016/j.jconrel.2011.07.037>.
  16. Souktani R, et al. Cardioprotection against myocardial infarction with PTD-BIR3/RING, a XIAP mimicking protein. *J Mol Cell Cardiol*. 2009;46:713-8. <https://doi.org/10.1016/j.yjmcc.2009.02.005>.
  17. Karantalis V, Hare JM. Use of mesenchymal stem cells for therapy of cardiac disease. *Circ Res*. 2015;116:1413-30. <https://doi.org/10.1161/circresaha.116.303614>.
  18. Sanina C, Hare JM. Mesenchymal stem cells as a biological drug for heart disease: where are we with cardiac cell-based therapy? *Circ Res*. 2015;117:229-33. <https://doi.org/10.1161/circresaha.117.306306>.
  19. Cashman TJ, Gouon-Evans V, Costa KD. Mesenchymal stem cells for cardiac therapy: practical challenges and potential mechanisms. *Stem Cell Rev Rep*. 2013;9:254-65. <https://doi.org/10.1007/s12015-012-9375-6>.
  20. Tompkins BA, et al. Preclinical studies of stem cell therapy for heart disease. *Circ Res*. 2018;122:1006-20. <https://doi.org/10.1161/CIRCRESAHA.117.312486>.
  21. Llano R, et al. Intracoronary delivery of mesenchymal stem cells at high flow rates after myocardial infarction improves distal coronary blood flow and decreases mortality in pigs. *Catheter Cardiovasc Interv*. 2009;73:251-7. <https://doi.org/10.1002/ccd.21781>.
  22. Jeong H, et al. Mesenchymal stem cell therapy for ischemic heart disease: systematic review and meta-analysis. *Int J Stem Cells*. 2018. <https://doi.org/10.15283/ijsc17061>.
  23. Roncalli J, et al. Intracoronary autologous mononucleated bone marrow cell infusion for acute myocardial infarction: results of the randomized multicenter BONAMI trial. *Eur Heart J*. 2011;32:1748-57. <https://doi.org/10.1093/eurheartj/ehq455>.
  24. Chen Z, Chen L, Zeng C, Wang WE. Functionally improved mesenchymal stem cells to better treat myocardial infarction. *Stem Cells Int*. 2018;2018:7045245. <https://doi.org/10.1155/2018/7045245>.
  25. Pinto AR, et al. Revisiting cardiac cellular composition. *Circ Res*. 2016;118:400-9. <https://doi.org/10.1161/circresaha.115.307778>.
  26. Zhou H, Toan S. Pathological roles of mitochondrial oxidative stress and mitochondrial dynamics in cardiac microvascular ischemia/reperfusion injury. *Biomolecules*. 2020. <https://doi.org/10.3390/biom10010085>.
  27. Wang J, Toan S, Zhou H. New insights into the role of mitochondria in cardiac microvascular ischemia/reperfusion injury. *Angiogenesis*. 2020;23:299-314. <https://doi.org/10.1007/s10456-020-09720-2>.
  28. Scarabelli TM, et al. Different signaling pathways induce apoptosis in endothelial cells and cardiac myocytes during ischemia/reperfusion injury. *Circ Res*. 2002;90:745-8. <https://doi.org/10.1161/01.res.0000015224.07870.9a>.
  29. Scarabelli T, et al. Apoptosis of endothelial cells precedes myocyte cell apoptosis in ischemia/reperfusion injury. *Circulation*. 2001;104:253-6. <https://doi.org/10.1161/01.cir.104.3.253>.
  30. Huang J, et al. Genetic modification of mesenchymal stem cells over-expressing CCR1 increases cell viability, migration, engraftment, and capillary density in the injured myocardium. *Circ Res*. 2010;106:1753-62. <https://doi.org/10.1161/CIRCRESAHA.109.196030>.
  31. Liu H, et al. Donor MSCs release apoptotic bodies to improve myocardial infarction via autophagy regulation in recipient cells. *Autophagy*. 2020. <https://doi.org/10.1080/15548627.2020.1717128>.
  32. Han D, et al. Melatonin facilitates adipose-derived mesenchymal stem cells to repair the murine infarcted heart via the SIRT1 signaling pathway. *J Pineal Res*. 2016;60:178-92. <https://doi.org/10.1111/jpi.12299>.
  33. Yan W, et al. C1q/tumor necrosis factor-related protein-9 regulates the fate of implanted mesenchymal stem cells and mobilizes their protective effects against ischemic heart injury via multiple novel signaling pathways. *Circulation*. 2017;136:2162-77. <https://doi.org/10.1161/circulationaha.117.029557>.
  34. Pan Q, et al. miR-132-3p priming enhances the effects of mesenchymal stromal cell-derived exosomes on ameliorating brain ischemic injury. *Stem Cell Res Ther*. 2020;11:260. <https://doi.org/10.1186/s13287-020-01761-0>.
  35. Vizoso FJ, Eiro N, Cid S, Schneider J, Perez-Fernandez R. Mesenchymal stem cell secretome: toward cell-free therapeutic strategies in regenerative medicine. *Int J Mol Sci*. 2017;18:10. <https://doi.org/10.3390/ijms18091852>.
  36. Wagner KD, Wagner N. Peroxisome proliferator-activated receptor beta/delta (PPARbeta/delta) acts as regulator of metabolism linked to multiple cellular functions. *Pharmacol Ther*. 2010;125:423-35. <https://doi.org/10.1016/j.pharmthera.2009.12.001>.
  37. Xin X, Yang S, Kowalski J, Gerritsen ME. Peroxisome proliferator-activated receptor gamma ligands are potent inhibitors of angiogenesis in vitro and in vivo. *J Biol Chem*. 1999;274:9116-21. <https://doi.org/10.1074/jbc.274.13.9116>.
  38. Bishop-Bailey D, Hla T. Endothelial cell apoptosis induced by the peroxisome proliferator-activated receptor (PPAR) ligand 15-deoxy-Delta 12, 14-prostaglandin J2. *J Biol Chem*. 1999;274:17042-8. <https://doi.org/10.1074/jbc.274.24.17042>.
  39. Bishop-Bailey D. Peroxisome proliferator-activated receptors in the cardiovascular system. *Br J Pharmacol*. 2000;129:823-34. <https://doi.org/10.1038/sj.bjp.0703149>.
  40. Hatae T, Wada M, Yokoyama C, Shimonishi M, Tanabe T. Prostaglandin-dependent apoptosis mediated by PPAR delta. *J Biol Chem*. 2001;276:46260-7. <https://doi.org/10.1074/jbc.M107180200>.
  41. Liou JY, Lee S, Ghelani D, Matijevic-Aleksic N, Wu KK. Protection of endothelial survival by peroxisome proliferator-activated receptor-delta mediated 14-3-3 upregulation. *Arterioscler Thromb Vasc Biol*. 2006;26:1481-7. <https://doi.org/10.1161/01.Atm.0000223875.14120.93>.
  42. Brunelli L, Cieslik KA, Alcorn JL, Vatta M, Baldini A. Peroxisome proliferator-activated receptor-delta upregulates 14-3-3 epsilon in human endothelial cells via CCAAT/enhancer binding protein-beta. *Circ Res*. 2007;100:e59-71. <https://doi.org/10.1161/01.Res.0000260805.99076.22>.
  43. Pesant M, et al. Peroxisome proliferator-activated receptor delta (PPARdelta) activation protects H9c2 cardiomyoblasts from oxidative stress-induced apoptosis. *Cardiovasc Res*. 2006;69:440-9. <https://doi.org/10.1016/j.cardiores.2005.10.019>.
  44. Luz-Crawford P, et al. PPARbeta/delta directs the therapeutic potential of mesenchymal stem cells in arthritis. *Ann Rheum Dis*. 2016. <https://doi.org/10.1136/annrheumdis-2015-208696>.
  45. Bouffi C, Bony C, Courties G, Jorgensen C, Noël D. IL-6-dependent PGE2 secretion by mesenchymal stem cells inhibits local inflammation in experimental arthritis. *PLoS ONE*. 2010;5: e14247. <https://doi.org/10.1371/journal.pone.0014247>.
  46. Nernpermpisooth N, et al. PPARβ/δ is required for mesenchymal stem cell cardioprotective effects in myocardial ischemia-reperfusion injury. *Front Cardiovasc Med*. 2021. <https://doi.org/10.3389/fcvm.2021.681002>.
  47. Kuznetsov AV, Javadov S, Sickinger S, Frotschnig S, Grimm M. H9c2 and HL-1 cells demonstrate distinct features of energy metabolism, mitochondrial function and sensitivity to hypoxia-reoxygenation. *Biochim Biophys Acta*. 1853;276-284:2015. <https://doi.org/10.1016/j.bbamcr.2014.11.015>.

48. Contreras-Lopez RA, et al. PPAR $\beta$ / $\delta$ -dependent MSC metabolism determines their immunoregulatory properties. *Sci Rep*. 2020;10:11423. <https://doi.org/10.1038/s41598-020-68347-x>.
49. Luz-Crawford P, et al. PPARbeta/delta directs the therapeutic potential of mesenchymal stem cells in arthritis. *Ann Rheum Dis*. 2016;75:2166–74. <https://doi.org/10.1136/annrheumdis-2015-208696>.
50. Scholtyssek C, et al. PPAR $\beta$ / $\delta$  governs Wnt signaling and bone turnover. *Nat Med*. 2013;19:608–13. <https://doi.org/10.1038/nm.3146>.
51. Braunwald E, Kloner RA. Myocardial reperfusion: a double-edged sword? *J Clin Investig*. 1985;76:1713–9. <https://doi.org/10.1172/JC1112160>.
52. Piper HM, Garcia-Dorado D. Prime causes of rapid cardiomyocyte death during reperfusion. *Ann Thorac Surg*. 1999;68:1913–9. [https://doi.org/10.1016/s0003-4975\(99\)01025-5](https://doi.org/10.1016/s0003-4975(99)01025-5).
53. Zhao ZQ, et al. Progressively developed myocardial apoptotic cell death during late phase of reperfusion. *Apoptosis*. 2001;6:279–90.
54. Zhu W, Chen J, Cong X, Hu S, Chen X. Hypoxia and serum deprivation-induced apoptosis in mesenchymal stem cells. *Stem Cells*. 2006;24:416–25. <https://doi.org/10.1634/stemcells.2005-0121>.
55. Gao F, et al. Heat shock protein 90 protects rat mesenchymal stem cells against hypoxia and serum deprivation-induced apoptosis via the PI3K/Akt and ERK1/2 pathways. *J Zhejiang Univ Sci B*. 2010;11:608–17. <https://doi.org/10.1631/jzus.B1001007>.
56. Tang YL, et al. Improved graft mesenchymal stem cell survival in ischemic heart with a hypoxia-regulated heme oxygenase-1 vector. *J Am Coll Cardiol*. 2005;46:1339–50. <https://doi.org/10.1016/j.jacc.2005.05.079>.
57. Li L, Chen X, Wang WE, Zeng C. How to improve the survival of transplanted mesenchymal stem cell in ischemic heart? *Stem Cells Int*. 2016;2016:9682757. <https://doi.org/10.1155/2016/9682757>.
58. Gamdzyk M, et al. Role of PPAR- $\beta$ / $\delta$ /miR-17/TXNIP pathway in neuronal apoptosis after neonatal hypoxic-ischemic injury in rats. *Neuropharmacology*. 2018;140:150–61. <https://doi.org/10.1016/j.neuropharm.2018.08.003>.
59. Liu X, et al. Exosomes from mesenchymal stem cells overexpressing MIF enhance myocardial repair. *J Cell Physiol*. 2020. <https://doi.org/10.1002/jcp.29456>.
60. Liu K, et al. Mesenchymal stem cells rescue injured endothelial cells in an in vitro ischemia-reperfusion model via tunneling nanotube like structure-mediated mitochondrial transfer. *Microvasc Res*. 2014;92:10–8. <https://doi.org/10.1016/j.mvr.2014.01.008>.
61. Xu Z, et al. Extracellular vesicles secreted from mesenchymal stem cells exert anti-apoptotic and anti-inflammatory effects via transmitting microRNA-18b in rats with diabetic retinopathy. *Int Immunopharmacol*. 2021;101:108234. <https://doi.org/10.1016/j.intimp.2021.108234>.
62. Buono L, et al. Mesenchymal stem cell-derived extracellular vesicles protect human corneal endothelial cells from endoplasmic reticulum stress-mediated apoptosis. *Int J Mol Sci*. 2021. <https://doi.org/10.3390/ijms22094930>.
63. Samaeekia R, et al. Effect of human corneal mesenchymal stromal cell-derived exosomes on corneal epithelial wound healing. *Investig Ophthalmol Vis Sci*. 2018;59:5194–200. <https://doi.org/10.1167/iovs.18-24803>.
64. Ward MR, Abadeh A, Connelly KA. Concise review: rational use of mesenchymal stem cells in the treatment of ischemic heart disease. *Stem Cells Transl Med*. 2018;7:543–50. <https://doi.org/10.1002/sctm.17-0210>.
65. Covinhes A, et al. Anti-apoptotic peptide for long term cardioprotection in a mouse model of myocardial ischemia-reperfusion injury. *Sci Rep*. 2020;10:18116. <https://doi.org/10.1038/s41598-020-75154-x>.
66. Heusch G. The coronary circulation as a target of cardioprotection. *Circ Res*. 2016;118:1643–58. <https://doi.org/10.1161/circresaha.116.308640>.
67. Heusch G. Critical issues for the translation of cardioprotection. *Circ Res*. 2017;120:1477–86. <https://doi.org/10.1161/circresaha.117.310820>.
68. Wang Z, et al. Rational transplant timing and dose of mesenchymal stromal cells in patients with acute myocardial infarction: a meta-analysis of randomized controlled trials. *Stem Cell Res Ther*. 2017;8:21. <https://doi.org/10.1186/s13287-016-0450-9>.
69. Bartunek J, et al. Congestive Heart Failure Cardiopoietic Regenerative Therapy (CHART-1) trial design. *Eur J Heart Fail*. 2016;18:160–8. <https://doi.org/10.1002/ehf.434>.
70. Nernpermpisooth N, et al. PPAR $\beta$ / $\delta$  is required for mesenchymal stem cell cardioprotective effects independently of their anti-inflammatory properties in myocardial ischemia-reperfusion injury. *Front Cardiovasc Med*. 2021;8:681002. <https://doi.org/10.3389/fcvm.2021.681002>.

## Publisher's Note

Springer Nature remains neutral with regard to jurisdictional claims in published maps and institutional affiliations.

Ready to submit your research? Choose BMC and benefit from:

- fast, convenient online submission
- thorough peer review by experienced researchers in your field
- rapid publication on acceptance
- support for research data, including large and complex data types
- gold Open Access which fosters wider collaboration and increased citations
- maximum visibility for your research: over 100M website views per year

At BMC, research is always in progress.

Learn more [biomedcentral.com/submissions](https://biomedcentral.com/submissions)

