



HAL
open science

The 3D Slicer RVXLiverSegmentation plug-in for interactive liver anatomy reconstruction from medical images

Jonas Lamy, Thibault Pelletier, Guillaume Lienemann, Benoît Magnin, Bertrand Kerautret, Nicolas Passat, Julien Finet, Antoine Vacavant

► To cite this version:

Jonas Lamy, Thibault Pelletier, Guillaume Lienemann, Benoît Magnin, Bertrand Kerautret, et al.. The 3D Slicer RVXLiverSegmentation plug-in for interactive liver anatomy reconstruction from medical images. *Journal of Open Source Software*, 2022, 7 (73), pp.3920. 10.21105/joss.03920 . hal-03649993

HAL Id: hal-03649993

<https://hal.science/hal-03649993v1>

Submitted on 3 May 2022

HAL is a multi-disciplinary open access archive for the deposit and dissemination of scientific research documents, whether they are published or not. The documents may come from teaching and research institutions in France or abroad, or from public or private research centers.

L'archive ouverte pluridisciplinaire **HAL**, est destinée au dépôt et à la diffusion de documents scientifiques de niveau recherche, publiés ou non, émanant des établissements d'enseignement et de recherche français ou étrangers, des laboratoires publics ou privés.



Distributed under a Creative Commons Attribution 4.0 International License

1 The 3D Slicer RVXLiverSegmentation plug-in for
2 interactive liver anatomy reconstruction from medical
3 images

4 Jonas Lamy^{*1}, Thibault Pelletier^{†2}, Guillaume Lienemann^{‡3}, Benoît
5 Magnin³, Bertrand Kerautret¹, Nicolas Passat⁴, Julien Finet², and
6 Antoine Vacavant^{3¶}

7 1 Université Lyon 2, LIRIS (UMR 5205) Lyon, France 2 Kitware SAS, Villeurbanne, France 3
8 Université Clermont Auvergne, CNRS, SIGMA Clermont, Institut Pascal, F-63000, Clermont-Ferrand,
9 France 4 Université de Reims Champagne Ardenne, CReSTIC, EA 3804, 51100 Reims, France ¶
10 Corresponding author

DOI: [10.xxxxxx/draft](https://doi.org/10.xxxxxx/draft)

Software

- [Review](#) ↗
- [Repository](#) ↗
- [Archive](#) ↗

Editor: [Kevin M. Moerman](#) ↗

Reviewers:

- [@lassoan](#)
- [@deepakri201](#)

Submitted: 05 October 2021

Published: unpublished

License

Authors of papers retain
copyright and release the work
under a Creative Commons
Attribution 4.0 International
License ([CC BY 4.0](#)).

Summary

12 RVXLiverSegmentation is a 3D Slicer ([Kikinis et al., 2014, 2022](#)) plug-in aiming at speeding-
13 up the annotation of liver anatomy from medical images (CT -Computerized Tomography-
14 scans or MRI -Magnetic Resonance Imaging- for instance). This organ has particular anatomy
15 and physiology; within its parenchymal volume, the liver receives blood from the portal vein and
16 hepatic artery (the former one being the most visible in medical images), and delivers filtered
17 blood through the hepatic veins, toward inferior vena cava. The blood vessels subdivide into the
18 liver as fine vascular tree structures, which makes the segmentation difficult, especially in the
19 case of MRI. To facilitate this task, our plug-in is decomposed into modules dedicated to the
20 segmentation of the liver volume, inner vessels and possible tumors. RVXLiverSegmentation
21 can be downloaded from ([Pelletier et al., 2022](#)) or installed from the 3D Slicer software as
22 an official module.

Statement of need

24 Annotation plays a key role in clinical practice and in the creation of reference datasets that
25 are useful to evaluate medical image processing algorithms and to train machine learning
26 based architectures ([Park et al., 2020](#)). Since softwares embedded into acquisition machines
27 are not always accurate for this task, researchers and engineers have developed more and
28 more interactive annotation and segmentation tools ([Wang et al., 2021](#)). But, despite these
29 developments, annotated datasets are still missing for many clinical applications. The creation
30 of the RVXLiverSegmentation plug-in has been motivated by the dramatic absence of a public
31 dataset providing hepatic MRI data together with their ground-truth segmentations of liver
32 anatomy. By creating our own dataset, we have developed a plug-in specifically dedicated to
33 this task, that can be used publicly by any user for the construction of new datasets related to
34 liver pathologies. Moreover, our plug-in has numerous clinical applications, such as the hepatic
35 volumetry, which is becoming increasingly important in view of the growing number of chronic
36 hepatopathies requiring transplants or hepatectomies ([Lim et al., 2014](#)).

*co-first author

†co-first author

‡co-first author

37 Overview of RVXLiverSegmentation

38 For research purpose needing annotation of liver anatomy from medical images, the RVXLiver
39 Segmentation provides 7 main tabs:

- 40 ■ loading and managing medical imaging data;
- 41 ■ liver segmentation;
- 42 ■ annotation of portal veins and segmentation;
- 43 ■ editing portal veins segmentation;
- 44 ■ annotation of inferior vena cava and segmentation;
- 45 ■ editing inferior vena cava segmentation;
- 46 ■ tumor segmentation.

47 Once the medical image data is loaded into the 3D Slicer interface, the liver can be segmented
48 with the associated tab, either by using interactive tools (such as region growing approaches)
49 or by an automatic deep learning based algorithm (for CT scans only), as exposed in Figure 1.
50 Then, the reconstructions of hepatic vessels (portal vein and inferior vena cava) are based on
51 tree structures interactively built by the user, who places the nodes of important branches and
52 bifurcations (with specific anatomical nomenclature) into the scene of the medical image to
53 be processed. After this step, a VMTK (Vascular Modeling Tool Kit) (Antiga et al., 2008)
54 module segments the vessels by using those graphs as initialization patterns (see Figure 2);
55 also, the user can verify and edit this segmentation. The last tab allows the user to segment
56 interactively possible tumoral tissues with dedicated tools.

57 This tab also permits to export the complete scene, comprising:

- 58 ■ segmentation label maps (liver, inferior vena cava, portal vein, tumors);
- 59 ■ portal vein and inferior vena cava intersection positions (fiducial CSV and adjacency
60 matrix);
- 61 ■ the complete scene as a MRB file.

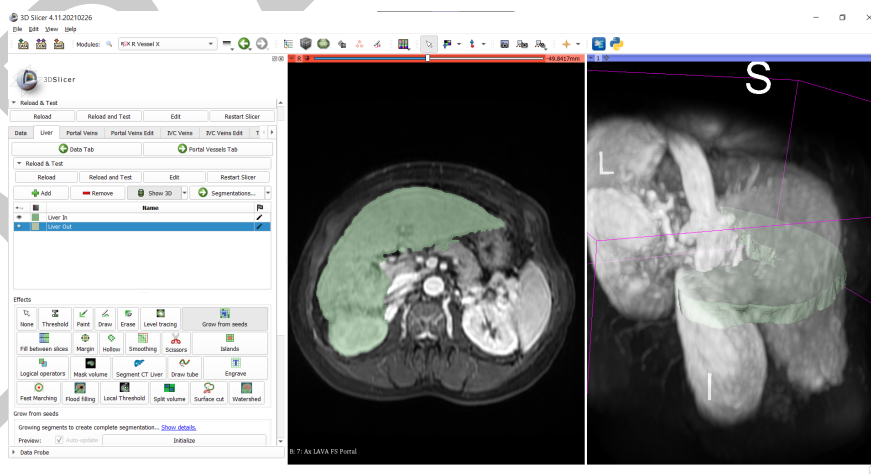


Figure 1: Liver segmentation tab.

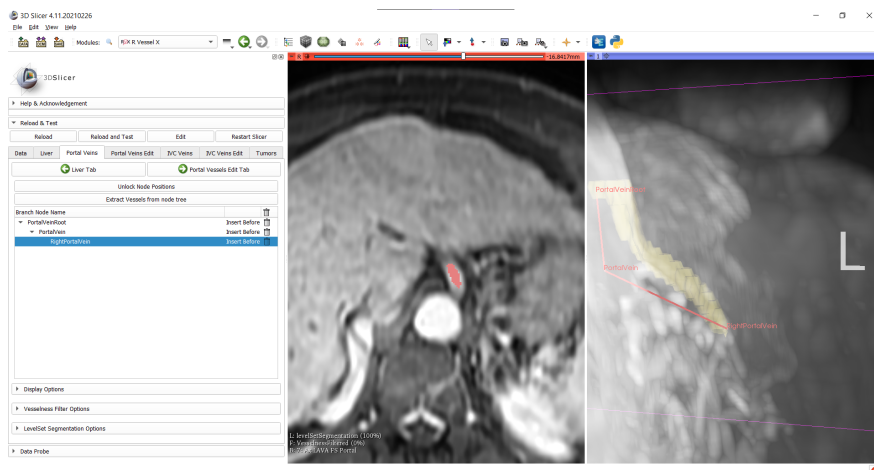


Figure 2: Tab for portal vein annotation and segmentation.

62 Preliminary results obtained with the plug-in

63 A first version of the RVXLiverSegmentation has been employed for segmenting livers from
 64 dynamic-contrast enhanced MRI data in order to test and evaluate a combined registration-
 65 segmentation algorithm, described in (Debroux et al., 2020). We have also compared the time
 66 of segmentations obtained by RVXLiverSegmentation and by the embedded image processing
 67 tool General Electric AW solution (Server 3.2). Our first results (Lamy et al., 2020) have
 68 shown a significant speed-up in the segmentation of liver volume and inner vessels. The
 69 following averaged times were measured with a first cohort of 6 “healthy” patients (*i.e.* not
 70 suffering from any hepatic disease) and 4 patients with liver cancer and cirrhosis.

Healthy patients	RVXLiverSegmentation	General Electric AW
Liver	3 ± 2 mins	10 ± 5 mins
Vessels	5 ± 3 mins	30 ± 10 mins

Cirrhotic patients	RVXLiverSegmentation	General Electric AW
Liver	4 ± 2 mins	15 ± 10 mins
Vessels	7 ± 4 mins	35 ± 15 mins

71 Future works

72 We first would like to integrate advanced deep learning models for liver and hepatic vessels
 73 segmentation (Affane et al., 2021) into our RVXLiverSegmentation plug-in, in order to provide
 74 automatic reconstructions that can be then edited by the user with the other tools proposed in
 75 the plug-in and in 3D Slicer. Another important work concerns the VMTK module, which
 76 needs more adaptations for MRI processing. As an example, the Frangi filter is employed as
 77 a pre-processing step (as a vascular enhancement algorithm), while other approaches could
 78 be opted instead (Lamy et al., 2021). Finally, a more complete evaluation protocol will be
 79 conducted with our plug-in, compared to commercial solutions, by taking into account larger
 80 patient cohorts.

81 Acknowledgements

82 This work was funded by the French *Agence Nationale de la Recherche* (grant ANR-18-CE45-
83 0018, project R-Vessel-X, <http://tgi.ip.uca.fr/r-vessel-x>).

84 References

- 85 Affane, A., Kucharski, A., Chapuis, P., Freydier, S., Lebre, M.-A., Vacavant, A., & Fabijańska,
86 A. (2021). Segmentation of liver anatomy by combining 3-D U-Net approaches. *MDPI*
87 *Journal of Applied Sciences*, 11(11:4895). <https://doi.org/10.3390/app11114895>
- 88 Antiga, L., Piccinelli, M., Botti, L., Ene-lordache, B., Remuzzi, A., & Steinman, D. A. (2008).
89 An image-based modeling framework for patient-specific computational hemodynamics.
90 *MBEC*, 46, 1097–1112. <https://doi.org/10.1007/s11517-008-0420-1>
- 91 Debroux, N., Lienemann, G., Magnin, B., Guyader, C. L., & Vacavant, A. (2020). A
92 time-dependent joint segmentation and registration model: Applications to longitudinal
93 registration of hepatic DCE-MRI sequences. *IEEE IPTA 2020*. [https://doi.org/10.1109/](https://doi.org/10.1109/ipta50016.2020.9286658)
94 [ipta50016.2020.9286658](https://doi.org/10.1109/ipta50016.2020.9286658)
- 95 Kikinis, R., Pieper, S. D., & Fillion-Robin, J. P. (2022). *3D Slicer*. <https://www.slicer.org>
- 96 Kikinis, R., Pieper, S. D., & Vosburgh, K. (2014). 3D Slicer: A platform for subject-specific
97 image analysis, visualization, and clinical support. In F. A. Jolesz (Ed.), *Intraoperative*
98 *Imaging Image-Guided Therapy* (Vol. 3(19), pp. 277–289). [https://doi.org/10.1007/](https://doi.org/10.1007/978-1-4614-7657-3_19)
99 [978-1-4614-7657-3_19](https://doi.org/10.1007/978-1-4614-7657-3_19)
- 100 Lamy, J., Merveille, O., Kerautret, B., Passat, N., & Vacavant, A. (2021). Vesselness
101 filters: A survey with benchmarks applied to liver imaging. *IEEE ICPR 2020*. [https://](https://doi.org/10.1109/icpr48806.2021.9412362)
102 doi.org/10.1109/icpr48806.2021.9412362
- 103 Lamy, J., Pelletier, T., Lienemann, G., Magnin, B., Kerautret, B., Passat, N., Finet, J., &
104 Vacavant, A. (2020). Preliminary results with a new annotation tool for liver volume and
105 inner vessels from DCE-MRI data. *VPH 2020*.
- 106 Lim, M. C., Tan, C. H., Cai, J., Zheng, J., & Kow, A. W. (2014). CT volumetry of
107 the liver: Where does it stand in clinical practice? *Clinical Radiology*, 69(9), 887–895.
108 <https://doi.org/10.1016/j.crad.2013.12.021>
- 109 Park, S., Chu, L. C., Fishman, E. K., Yuille, A. L., Vogelstein, B., Kinzler, K. W., Horton, K.
110 M., Hruban, R. H., Zinreich, E. S., Fouladi, D. F., Shayesteh, S., Graves, J., & Kawamoto,
111 S. (2020). Annotated normal CT data of the abdomen for deep learning: Challenges
112 and strategies for implementation. *Diagnostic and Interventional Imaging*, 101(1), 35–44.
113 <https://doi.org/10.1016/j.diii.2019.05.008>
- 114 Pelletier, T., Finet, J., & Vacavant, A. (2022). RVesselX slicer liver anatomy an-
115 notation plugin. In *GitHub repository*. GitHub. [https://github.com/R-Vessel-X/](https://github.com/R-Vessel-X/SlicerRVXLiverSegmentation)
116 [SlicerRVXLiverSegmentation](https://github.com/R-Vessel-X/SlicerRVXLiverSegmentation)
- 117 Wang, S., Li, C., Wang, R., Liu, Z., Wang, M., Tan, H., Wu, Y., Liu, X., Sun, H., Yang, R.,
118 Liu, X., Chen, J., Zhou, H., Ben Ayed, I., & Zheng, H. (2021). Annotation-efficient deep
119 learning for automatic medical image segmentation. *Nature Communications*, 12(5915).
120 <https://doi.org/10.1038/s41467-021-26216-9>