



**HAL**  
open science

# Tanzania Craton, Serengeti Plain and Eastern Rift Valley: mapping of geospatial data by scripting techniques

Polina Lemenkova

► **To cite this version:**

Polina Lemenkova. Tanzania Craton, Serengeti Plain and Eastern Rift Valley: mapping of geospatial data by scripting techniques. *Estonian Journal of Earth Sciences*, 2022, 71 (2), pp.61-79. 10.3176/earth.2022.05 . hal-03647251

**HAL Id: hal-03647251**

**<https://hal.science/hal-03647251>**

Submitted on 20 Apr 2022

**HAL** is a multi-disciplinary open access archive for the deposit and dissemination of scientific research documents, whether they are published or not. The documents may come from teaching and research institutions in France or abroad, or from public or private research centers.

L'archive ouverte pluridisciplinaire **HAL**, est destinée au dépôt et à la diffusion de documents scientifiques de niveau recherche, publiés ou non, émanant des établissements d'enseignement et de recherche français ou étrangers, des laboratoires publics ou privés.



Distributed under a Creative Commons Attribution - NonCommercial - NoDerivatives 4.0 International License

## Tanzania Craton, Serengeti Plain and Eastern Rift Valley: mapping of geospatial data by scripting techniques

Polina Lemenkova

Laboratory of Image Synthesis and Analysis, École Polytechnique de Bruxelles (Brussels Faculty of Engineering), Université Libre de Bruxelles (ULB), Bld. L, Campus de Solbosch, Av. Franklin Roosevelt 50, Brussels 1000, Belgium; polina.lemenkova@ulb.be, pauline.lemenkova@gmail.com

Received 28 August 2021, accepted 22 March 2022, available online 19 April 2022

**Abstract.** Cartographic visualization is a key means for the analysis of the Earth's environmental processes. In view of the rapidly increasing multi-source data, cartographic approaches are updated accordingly. Mapping of countries characterized by complex geologic settings, such as Tanzania, requires implementation of advanced approaches. Cartographic solutions for the best visualization aim to provide elaborate content in an understandable and interoperable way in multi-disciplinary studies. This study presents such an approach by using Generic Mapping Tools (GMT), R and QGIS for cartographic mapping of Tanzania, with five maps addressing the natural setting (geology, topography, geophysics) and four maps showing the geomorphometric analysis. The 2D maps and the 3D mesh model were made by the traditional Geographic Information System (GIS) and scripting approaches. The features of the geomorphometric maps (slope, aspect, hillshade, elevation) were plotted by means of R. The technical methods are illustrated by the example of scripts. The paper contributes to the regional studies of Tanzania.

**Keywords:** GMT, R, QGIS, Tanzania, cartography.

### INTRODUCTION

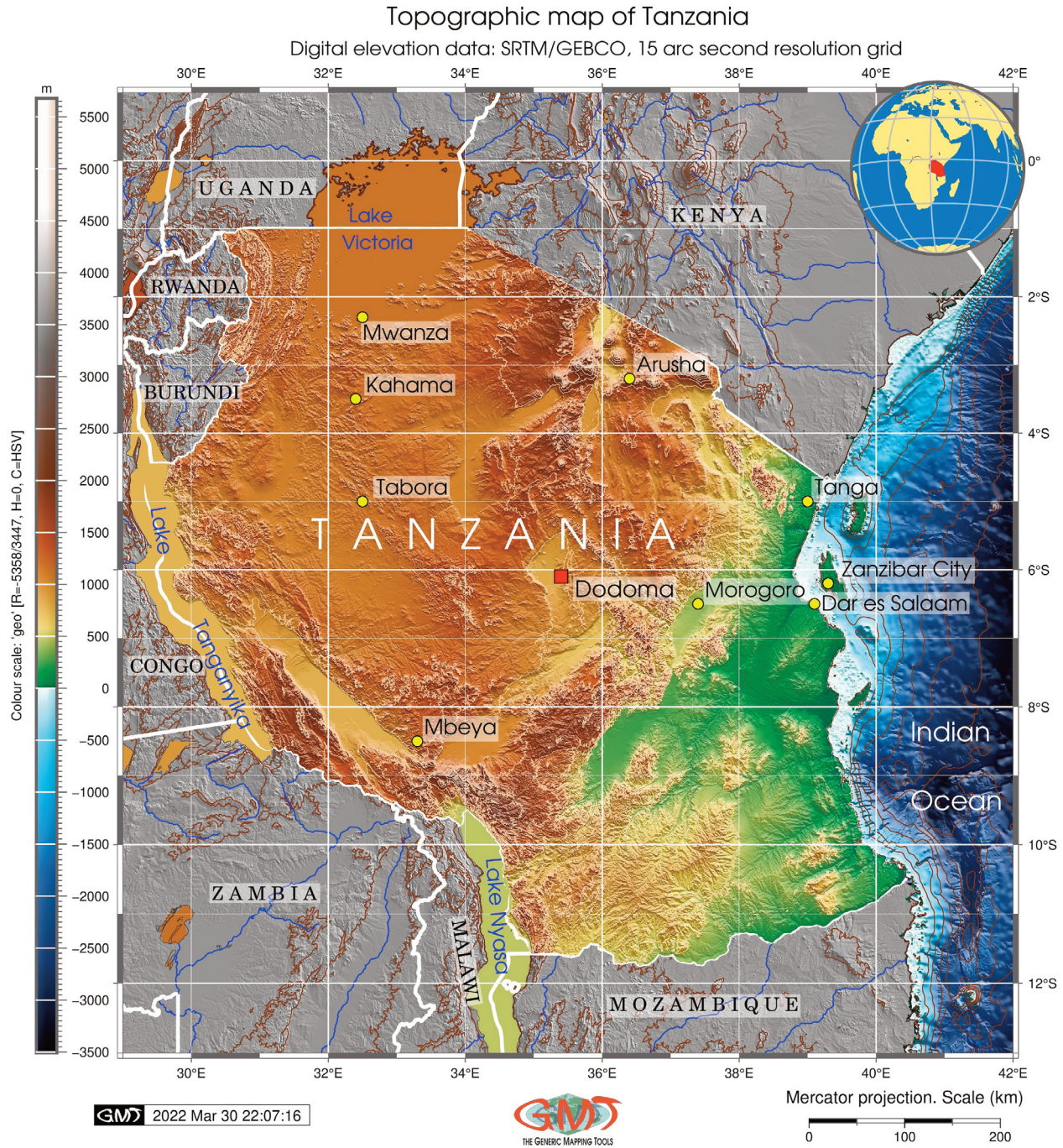
An increasing volume of data is being generated by the geological surveys and remote sensing carried out in Tanzania (Temple and Rapp 1972; Kagya et al. 1991; Mjili and Mulibo 2018; Mvile et al. 2020). The need for rapid and effective processing of the collected data drives the search for effective tools for cartographic workflow with minimized handmade routine and maximized automated approach. The scripting approach in cartography enables to better explore geological and geomorphological data.

The environmental setting of Tanzania (see Fig. 1 for topography) has been continuously studied since the 1960s (James 1967; Kent et al. 1971; Kajato 1982; Maboko and Basu 1987; Ijumulana et al. 1997; Kabete et al. 2012a, 2012b; Boniface 2014; Hamdun and Arakaki 2015; Gombe et al. 2017; John 2020). Such attention can be explained by its unique environment, specific geologic setting and rich mineral resources. Tanzania is notable for unique natural settings influenced by the East African Rift, an intra-continental active ridge system (Bosworth et al.

2000; Chorowicz 2005; Kapilima 2003). Geologically, the East African Rift System is the result of the actions of numerous normal faults (Haidutov 1976; Kearey et al. 2009; Graniczny et al. 2011). Other notable geographic features are Lake Victoria, Lake Nyasa and Lake Tanganyika that belong to the Great African Lakes formed as an outcome of the geologic evolution, including complex tectonic movements.

The tectonic history of the Northeast African–Arabian plate reveals formation of the passive margins of the Paleotethys and the Neotethys (Guiraud and Bosworth 1999). A system of Tanzanian–Kenyan rifts was created as a result of the tectonic crustal extension during the Mesozoic and early Tertiary, with the Central African Rift System being formed in the Late Jurassic (Bosworth 1992; Bosworth and Maurin 1993; Scoon 2018). Nowadays, the Central African Rift System stretches from central Sudan to southern Kenya and includes Tanzania.

Tanzania is significant for a wide variety of landscapes: 1) raised beaches and marine-cut platforms; 2) river terraces, valley bottoms; 3) coastal wetlands, beaches and lagoons formed by waves and tidal impact



**Fig. 1.** Topographic map of Tanzania. Data: General Bathymetric Chart of the Oceans (GEBCO) overprinted on the monochrome shadow Digital Elevation Model (DEM) image. Data source: GEBCO Compilation Group 2020. Map source: elaborated by the author.

in the eastern coasts of Tanzania; 4) mudflats, marshes, mangrove swamps, estuaries and deltas having tidal origin; 5) rift system depressions characterized by salt lakes, playas, swamps, wetlands and streams; 6) mountainous highlands; 7) lakes, swamps and floodplains

(Cooke 1974). The variability of these landscapes was created in the course of the geologic evolution and shaped by external factors, such as aeolian processes, hydrological networks, soil processes including erosion and vegetation coverage.

Mapping such a diverse region, rich in geological resources and natural landscapes, requires advanced cartographic approaches and robust geospatial data. In response to these needs, this study brings together multi-source datasets, advanced scripting and GIS methods. Investigating the links between the geologic and topographic settings can provide new information derived from the geospatial data. The objective of the work is to present an advanced cartographic approach of the integrated data analysis. The study aims to highlight the correlations between the geologic and geophysical settings of Tanzania and its relief as reflected in regional geomorphology. The practical goal is to fill in the gap between the modern cartographic solutions and the existing geological and geophysical datasets.

Nowadays, in the epoch of automatization, the development of scripting in cartography has become a topic of critical importance. Methods of applied programming have attracted great interest due to their broad potential and an increasing need for automated mapping (Schenke and Lemenkova 2008; Koskinen et al. 2019; Lemenkova 2019a, 2021b; Höhle 2021). Another important question of modern cartography concerns availability of data and methods. Some commercial GIS applications have restricted access and are not available to all users. While these software solutions provide base tools for mapping, it is always advisable to use open source GIS and data to enable repeatability of research. This study presents cartographic methods which can be benchmarked in similar studies. Moreover, using the proposed workflow, other high-resolution datasets can be employed for cross evaluations and expanding research goals.

Background information on the cartographic data on Tanzania has revealed the lack of scripting approaches (Berry and Hellen 1972; Bosworth and Strecker 1997; Delvaux 2001; Collins et al. 2004; Fritz et al. 2005). Scripting is, nevertheless, a useful technique enabling to repeat workflow, shorten time and increase automation of data processing. While closely related in spatial data processing, GIS and scripting cartography are not the same. Scripting performs mapping by running the script which consists of command lines of codes written using programming syntax. Traditional GIS mapping is largely a Graphical User Interface (GUI)-based process. The workflow of this study involved making decisions on map design, organizing layers across the range of the supported formats, preparing the layout, with the primary goal of maintaining map aesthetics and readability. This study answers the following two questions: (1) how scripting and GIS can be used in integrated mapping; (2) what information can be derived from thematic data to get better insights into the regional setting of Tanzania.

## MATERIALS AND METHODS

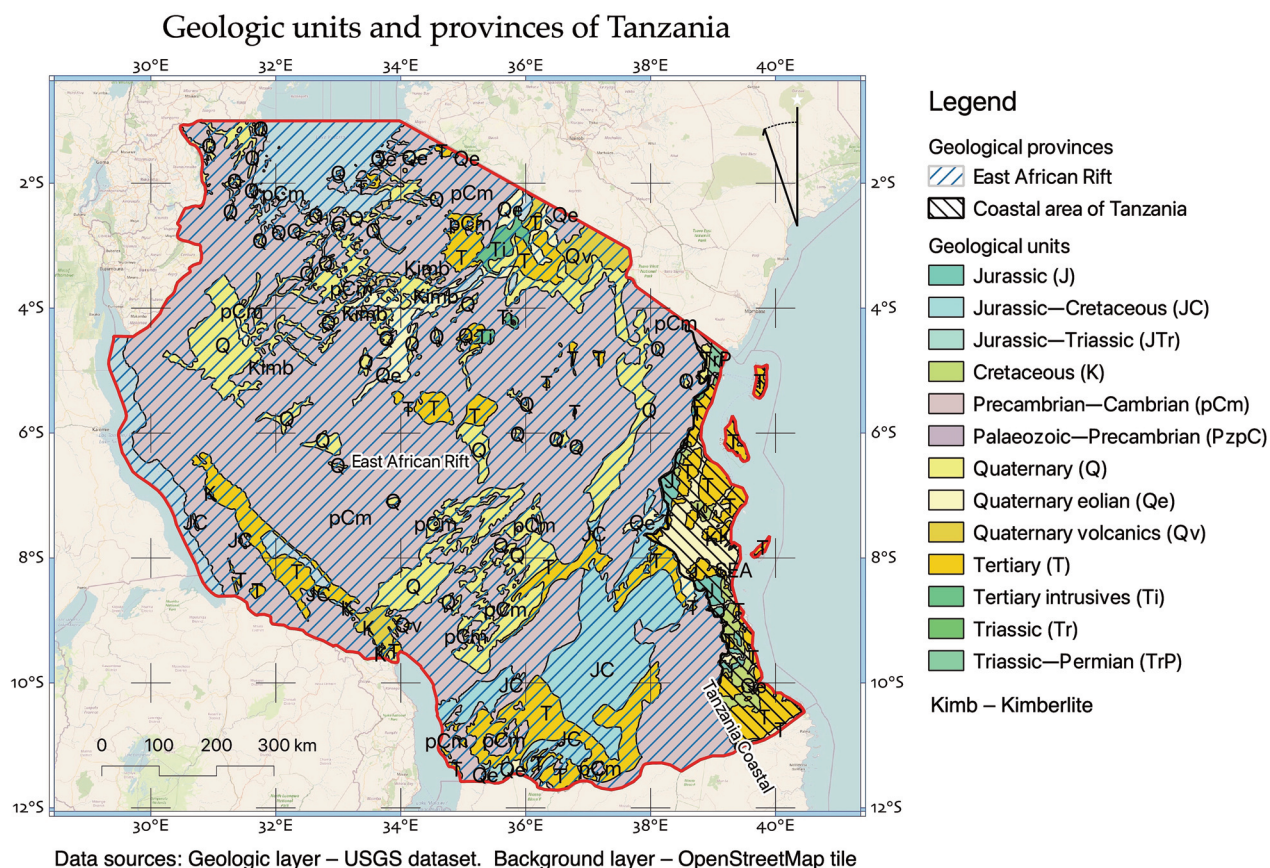
### Data

The presented geospatial data analysis consists in abstracting the diverse datasets available online. These data have been integrated into a project on Tanzania and targeted for representation. The topographic data (Fig. 1) were based on GEBCO (GEBCO Compilation Group 2020); the geological dataset (Fig. 2) was retrieved from the United States Geological Survey (USGS) (Persits et al. 1997; Pollastro et al. 1999). Other existing geological datasets include traditional maps (Pinna et al. 1996, 2000; BRGM et al. 2004; Kabete et al. 2012B; Quennell, 1956; Quennell et al. 1956). Besides the geological data available on Tanzania, there is online mapping coverage on relevant resources (Geological Survey of Tanzania 2021). The 3D model (Fig. 3) was based on the ETOPO1 (Amante and Eakins 2009); the geoid map (Fig. 4) on the EGM-2008 (Pavlis et al. 2012); the geophysical data (Fig. 5) were derived from the gravity grids (Sandwell and Smith 1997; Sandwell et al. 2014), the DEM was obtained from the R ‘raster’ package (Hijmans and van Etten 2012), Figs 6–9.

Using GEBCO for topographic mapping is reported in literature (Masalu 2008; Lindh and Lemenkova 2021; Gauger et al. 2007; Lemenkova 2019c, 2020e, 2021d, 2021e). Its popularity can be explained by its availability (<https://www.gebco.net/>) and unprecedentedly high resolution. Land areas of GEBCO are based on the SRTM (Farr and Kobrick 2000; Farr et al. 2007; NASA Shuttle Radar Topography Mission (SRTM) 2013).

### Scripting in GMT

Generic Mapping Tools (GMT) is an advanced scripting toolset (Wessel et al. 2019), which presents an automated suite of modules for cartographic data processing and design techniques using GMT syntax, as demonstrated earlier (Lemenkova 2020a, 2021a). GMT presents a promising scripting approach in cartography. Originally developed for geophysical needs, it has gained significance for thematic mapping (Lemenkova 2019b; 2019d). GMT applies shell scripts for cartographic visualization, seeking to create artistic, print quality 2D and 3D maps using modules for data processing. GMT discriminates commands and flags in a script and plots a map by executing this script. The commands are written by means of modules. The maps demonstrated in Figs 1, 4 and 5 were made applying the modules ‘grdimage’, ‘pscoast’, ‘grdcontour’, ‘psbasemap’, ‘pstext’, ‘psxy’ and ‘psclip’. The GMT scripts used for mapping in Figs 1, 3, 4 and 5 are provided in the Appendix. For example, the following GMT modules were used for visualization of



**Fig. 2.** Geological units and provinces in Tanzania. Data source: United States Geological Survey (USGS) (Persits et al. 1997) and OpenStreetMap (OpenStreetMap contributors). Map source: elaborated by the author.

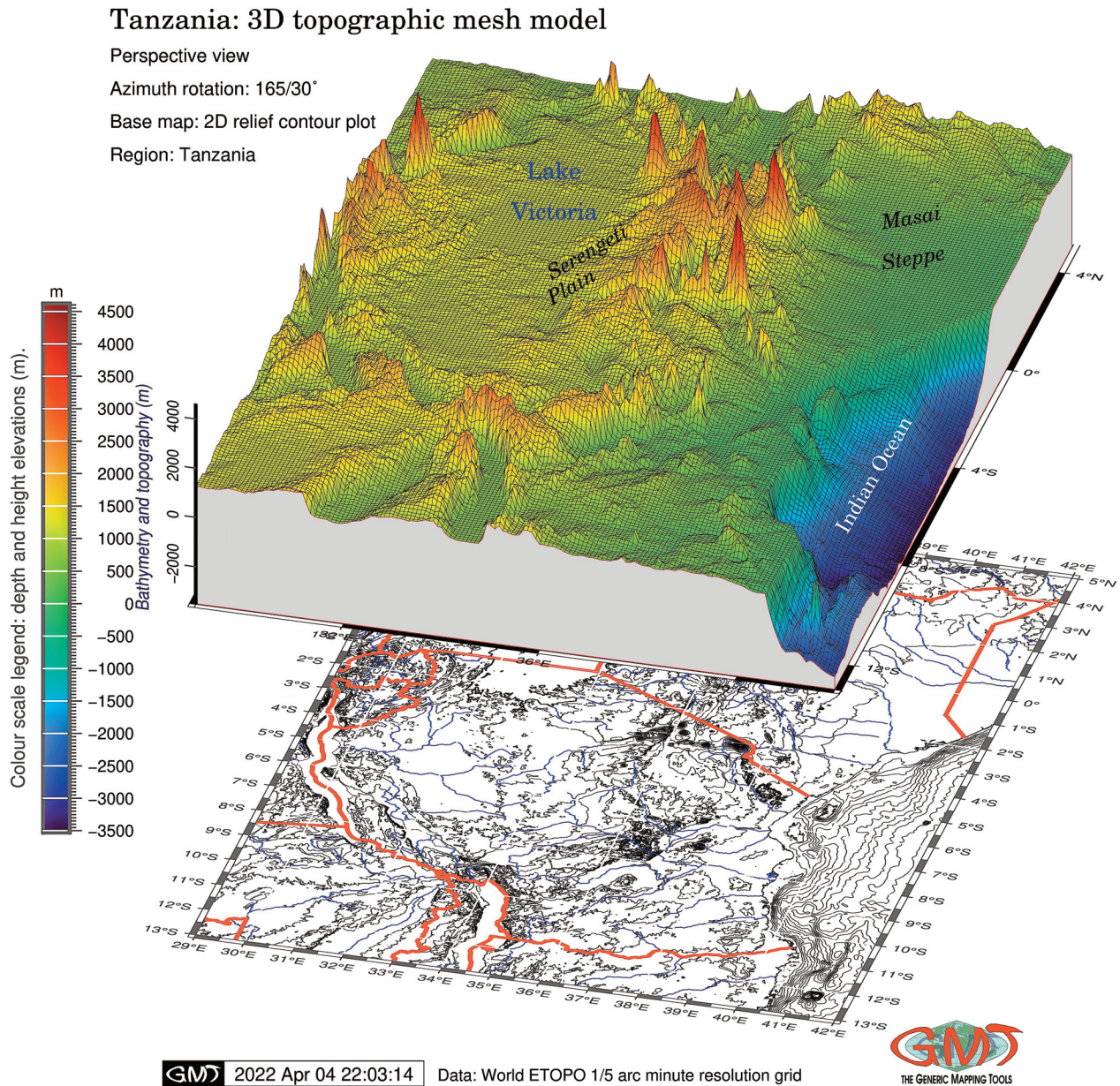
the cartographic elements: the ‘grdimage’ module for plotting raster image, ‘pscoast’ for adding linear objects (coastal lines, country borders and rivers), ‘grdcontour’ for plotting isolines, ‘psbasemap’ for adding cartographic elements (legend, title, subtitle, background, grid, scale bar, north arrow, and graticule ticks), ‘pstext’ for plotting texts, ‘psclip’ for clipping the area (script 1 in Appendix), and ‘grdview’ for 3D. The legend was added by ‘psscale’ (scripts 1–4 in Appendix). Thus, each module was utilized for a specific purpose in a workflow. Colour palettes used in the makecpt module aimed to enhance data appearance. For example, Fig. 4 was plotted by the ‘wysiwig’ palette and Fig. 5 by ‘haxby’. Figure 1 shows a clipped area by the ‘geo’ palette overlain by the monochrome SRTM (Farr and Kobrick 2000; Farr et al. 2007). The 3D mapping is presented in Fig. 3 as a perspective overlay of the 3D mesh grid on ETOPO5 (5-m grid) over the 2D topographic contour based on ETOPO1 (script 2 in Appendix). Likewise, cartographic elements were plotted by various modules (see scripts 3 and 4 in Appendix). In such a way, the modules of GMT describe and control the appearance

of the elements by adjusted flags within the executed module. A conceptual approach of scripting consists in selecting modules based on functionality. It increases the speed and precision of the machine’s performance and results in print-quality maps with layouts where the appearance of each cartographic element is regulated in a refined and detailed way.

### Mapping in QGIS

QGIS presents a classic software that enables to visualize spatial information using a GUI. The map of geological units and provinces of Tanzania (Fig. 2) was plotted in QGIS (QGIS.ORG Association 2021) by employing the existing methods (Lemenkova 2020b, 2020c).

Visualization in QGIS requires taking the following decisions in a workflow: (1) how and from where the data are collected (data capture); (2) the extent and resolution of the data (data quality); (3) how data layers are displayed (data organization); (4) how the layout is organized and where the cartographic elements are placed (legend, scale



**Fig. 3.** 3D model of Tanzania. Data source: ETOPO1 5-minute resolution grid (Amante and Eakins 2009). Vertical exaggeration of z-axis scale is 3.5 (z-axis scaling as `-JZ3.5c` in the `'grdview'` module of GMT). Horizontal resolution is 1:10,000,000. Map source: elaborated by the author.

bar, annotations, map, north arrow) (data visualization and representation); (5) which requirements are given for symbolizing the content. These steps were performed as a workflow in QGIS to achieve effective mapping (Fig. 2). As a result, an updated geological map was created which shows geological units and provinces of Tanzania using USGS data (Pollastro et al. 1999), with the cartographic elements illustrated by means of open geospatial data from QGIS.

### Programming in R

The data processing was technically carried out using RStudio (RStudio Team 2017) of R language (R Core Team 2021). The R-based geomorphometric mapping presents a series of maps (Figs 6, 7, 8 and 9) describing the fundamental parameters of the relief: slope, aspect, hillshade and elevation heights. Here the maps were created on the basis of the Digital Elevation Model (DEM)

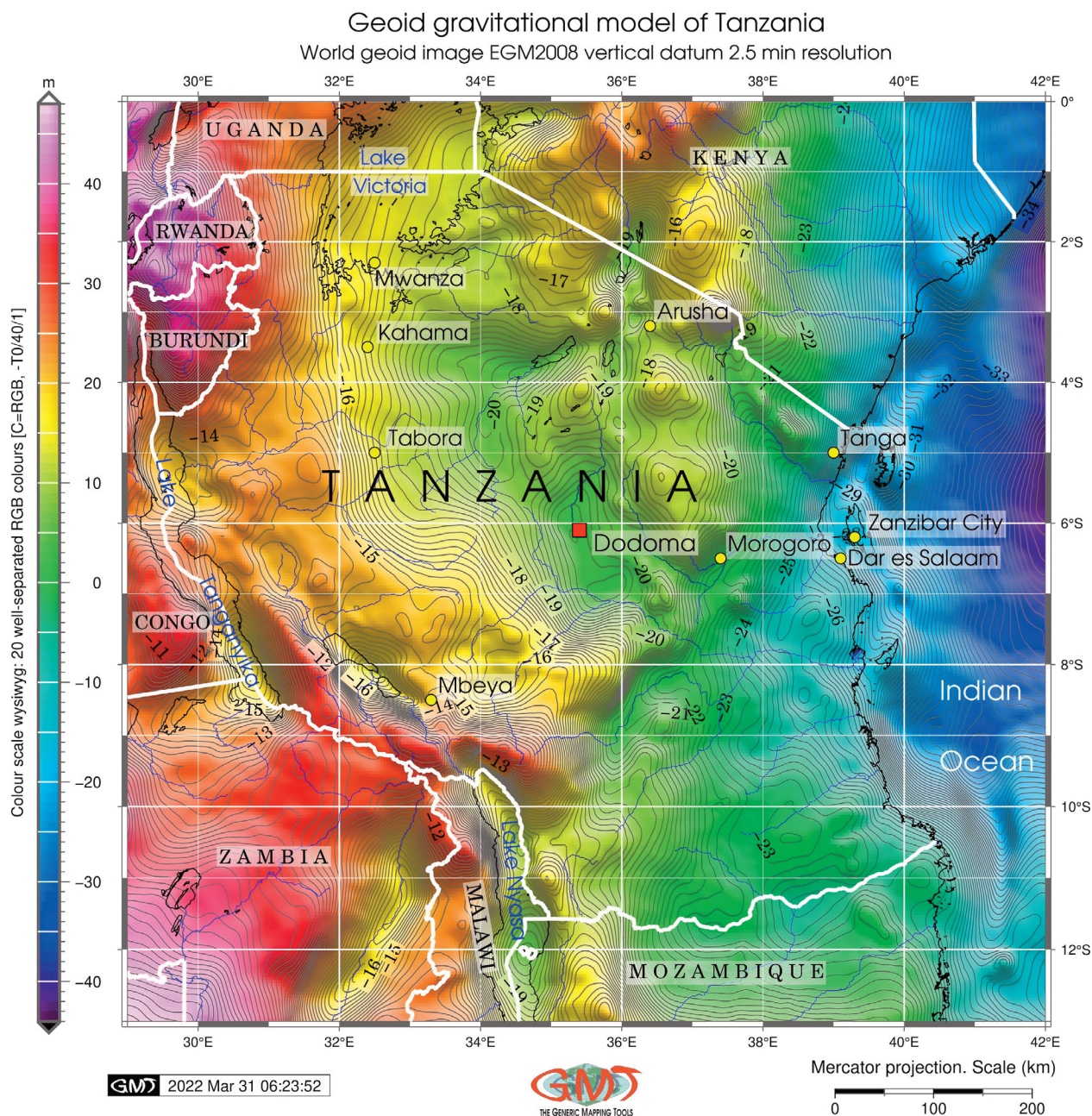
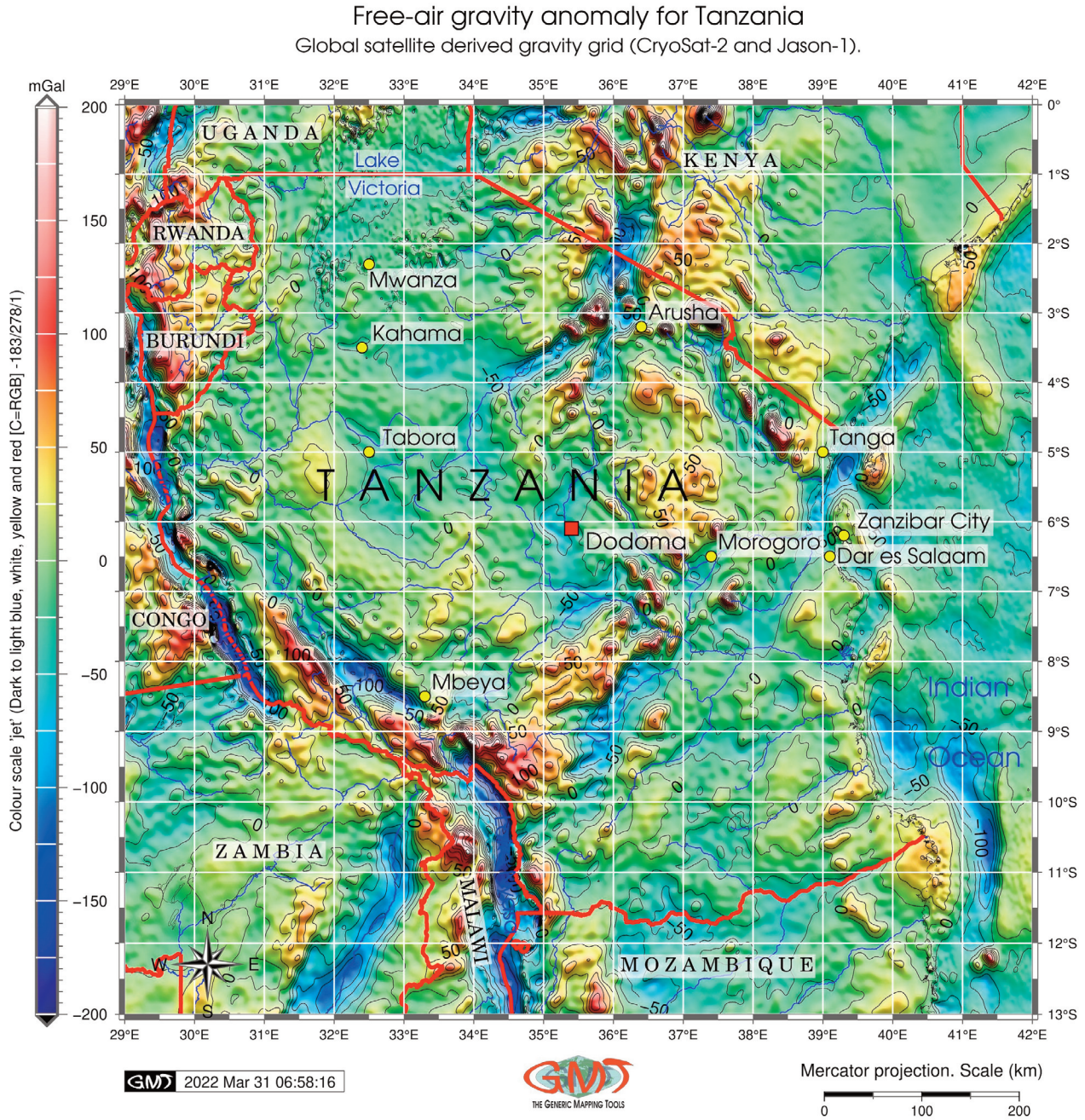


Fig. 4. Geoid gravitational model of Tanzania. Data: EGM-2008. Map source: elaborated by the author.

where slope, aspect, hillshade and elevation heights are, in turn, derivatives used for geomorphological analyses. Data capture was performed by ‘getData’ function of the ‘raster’ package. Modelling of slope, aspect, hillshade and elevation was performed by the ‘raster’ package.

The cartographic adjustments of the maps were made by the ‘tmap’ package of R, which improved the visual appearance of the maps (Figs 6–9) by changing style, positioning, colour and fonts of the cartographic elements modified according to map layouts. The colour palettes

were selected from the ‘RColorBrewer’ package using RGB (Red, Green, Blue) and CMYK (Cyan, Magenta, Yellow, Black) palettes for the maps in Figs 6–9 (Brewer et al. 2003; Brewer 2003; Harrower and Brewer 2003). The ‘tmap’ package of R (Tennekes 2018) designed for generating maps employs the scripting approach based on the R syntax (Lemenkova 2020d) rather than the traditional GIS (e.g. Suetova et al. 2005; Lemenkova 2011, 2021c, 2021f; Klaučo et al. 2014, 2017). The R script used for plotting Figs 6–9 is provided in the



**Fig. 5.** Free-air gravity anomaly of Tanzania. Data source: CryoSat-2 and Jason-1. Map source: elaborated by the author.

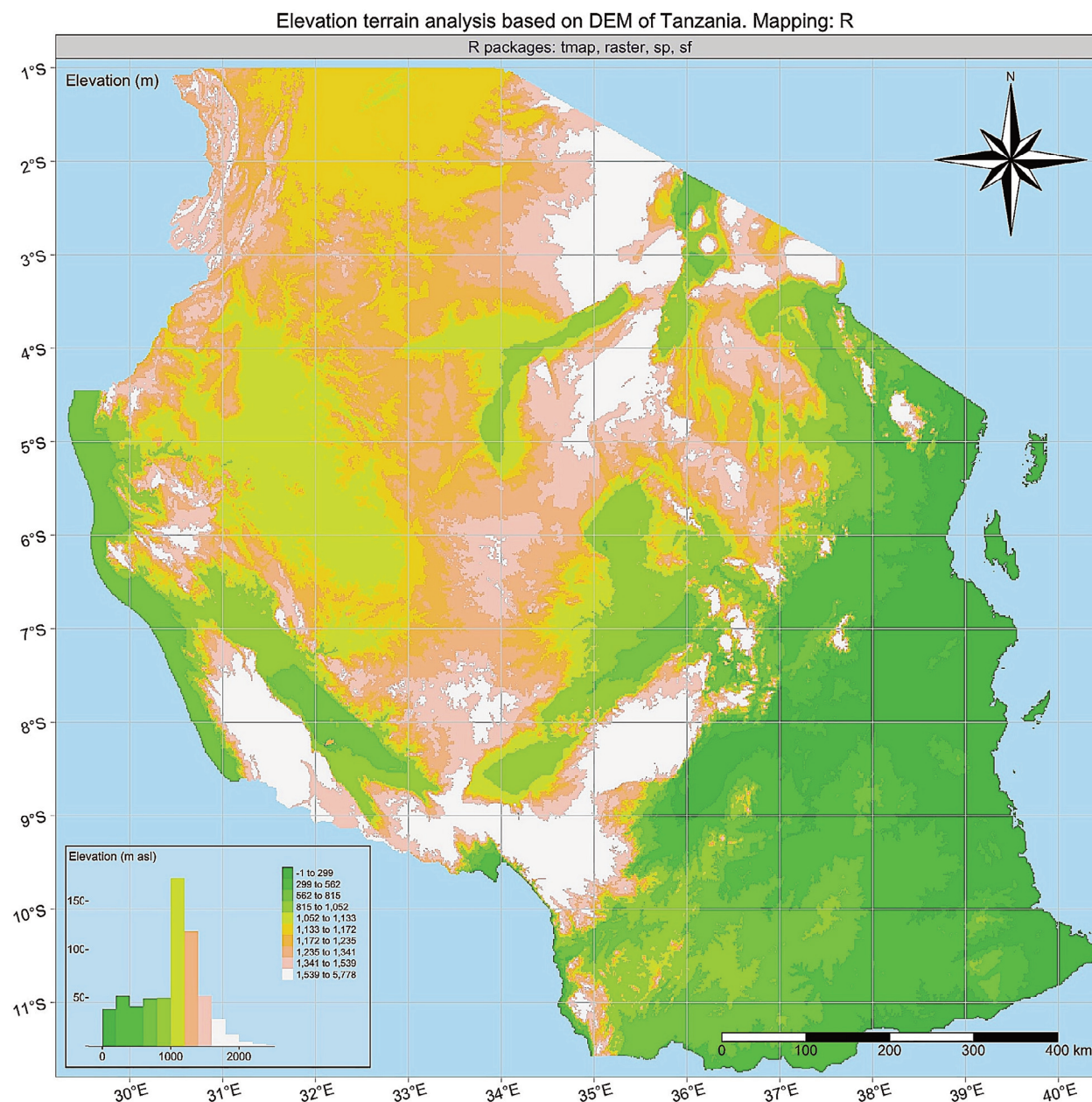
Appendix for more technical details. The lines of the script control the annotation styles, fonts, angle of graticule, layout style and other cartographic adjustments (Figs 6–9).

## RESULTS

The advanced cartographic approaches have generated nine new maps aimed to visualize Tanzania in multiple

thematic content: geophysics, geodesy, geology, topography and geomorphology. According to the data inspection by GDAL (Geospatial Data Abstraction Library), the topography reaches up to 5677 m with the mean of 617 m, which also includes the coastal area of the Indian Ocean with the minimal values at  $-3510$  m (Fig. 1). The inspection was carried out using the command “gdalinfo -stats tz\_relief.nc”, which checked the values of the cells in the file. In GDAL the “gdalinfo” runs the





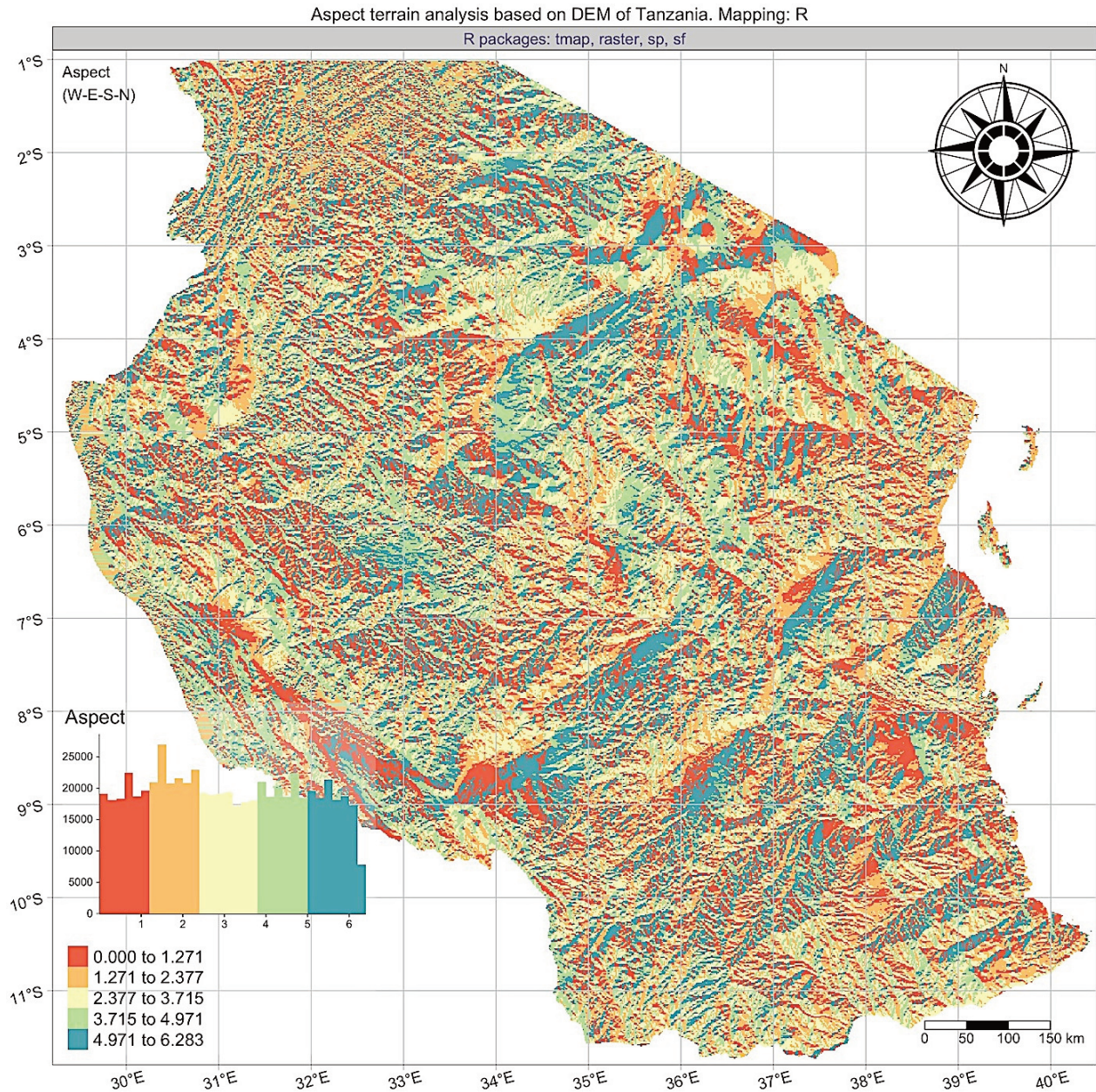
**Fig. 6.** Visualization of the Digital Elevation Model (DEM) of the terrain of Tanzania. Mapping by R using packages ‘tmap’, ‘raster’, ‘sp’, ‘sf’. Map source: elaborated by the author.

command in a console, the “-stats” flag means the statistics command and the “tz\_relief.nc” is the name of the file in NetCDF format. The oceanic area includes the coastal region of Tanzania (Fig. 1).

Figure 2 shows the geologic content prepared by means of QGIS. The Precambrian to Cambrian (pCm) geological unit is located within the East African Rift. The other widely distributed types include Quaternary (Q) deposits and Quaternary volcanics (Qv) in the north. The Tertiary (T) outcrops are found occasionally, lying mostly

along the coastal area as well as in southern and western regions. The Jurassic to Cretaceous (JC) units are mainly located in the south (Fig. 2). Compared to the existing 3D mapping of Eastern Africa (Bosworth 1994) which visualizes graben geometry as graphics, the 3D map shows an elevation perspective view made by the ‘grdview’ module featuring major objects: Lake Victoria, the Masai Steppe, the Serengeti Plain (Fig. 3).

The 3D map (Fig. 3) was created by scripting which provides a time-efficient workflow for accurate data

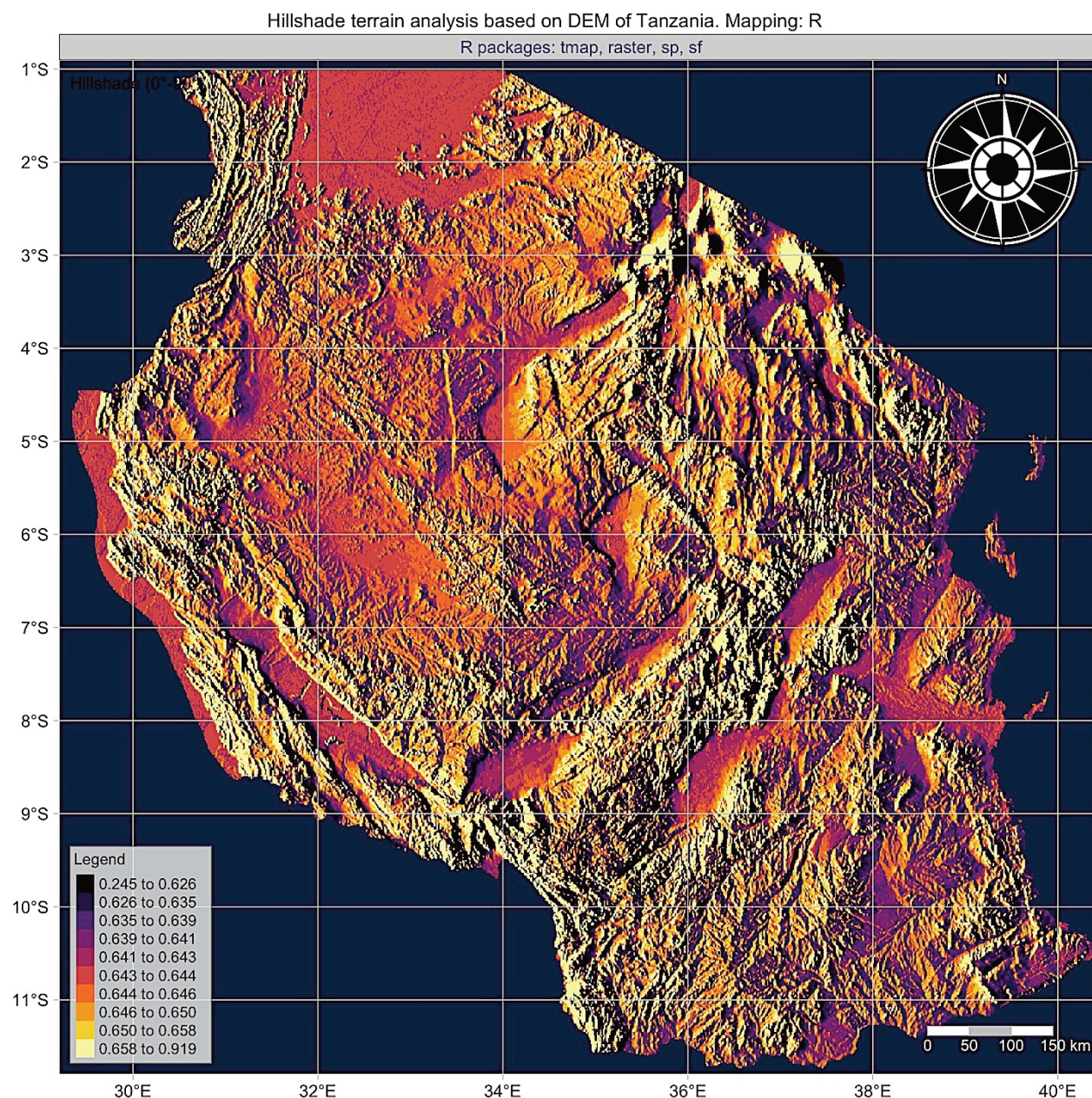


**Fig. 7.** Aspect terrain visualization based on DEM of Tanzania. Mapping by R using packages ‘tmap’, ‘raster’, ‘sp’, ‘sf’. Map source: elaborated by the author.

visualization using a high degree of automation. This is achieved by the automated map plotting algorithms employing stepwise modular scripting techniques aimed to present updated information on the topography of Tanzania.

Figures 4 and 5 show the geoid and free-air gravity anomaly in Tanzania. The maximum range of geoid undulations (Fig. 4) reaches 48 mGal (Burundi, Rwanda and NE Zambia), while the minimum is  $-45$  mGal, pointing to variations in the rock density causing transformation in the geoid values. The analysis of Fig. 5 indicates variations in the free-air gravity anomalies with

the dominant values of  $45/+25$  mGal (Fig. 5). Accurate detection of geoid and gravity values enables to compare variations in the regional geophysical setting through precise visualization by GMT. In this way, mapping based on the geoid Earth Gravitational Model 2008 (EGM-2008) creates a platform for further geophysical analysis. Scripting algorithms of raster data processing enable to plot maps accurately due to the automated workflow. This makes it possible to detect correlations among the geophysical and geologic variables by the comparison of maps. The geological and geophysical maps, compared to



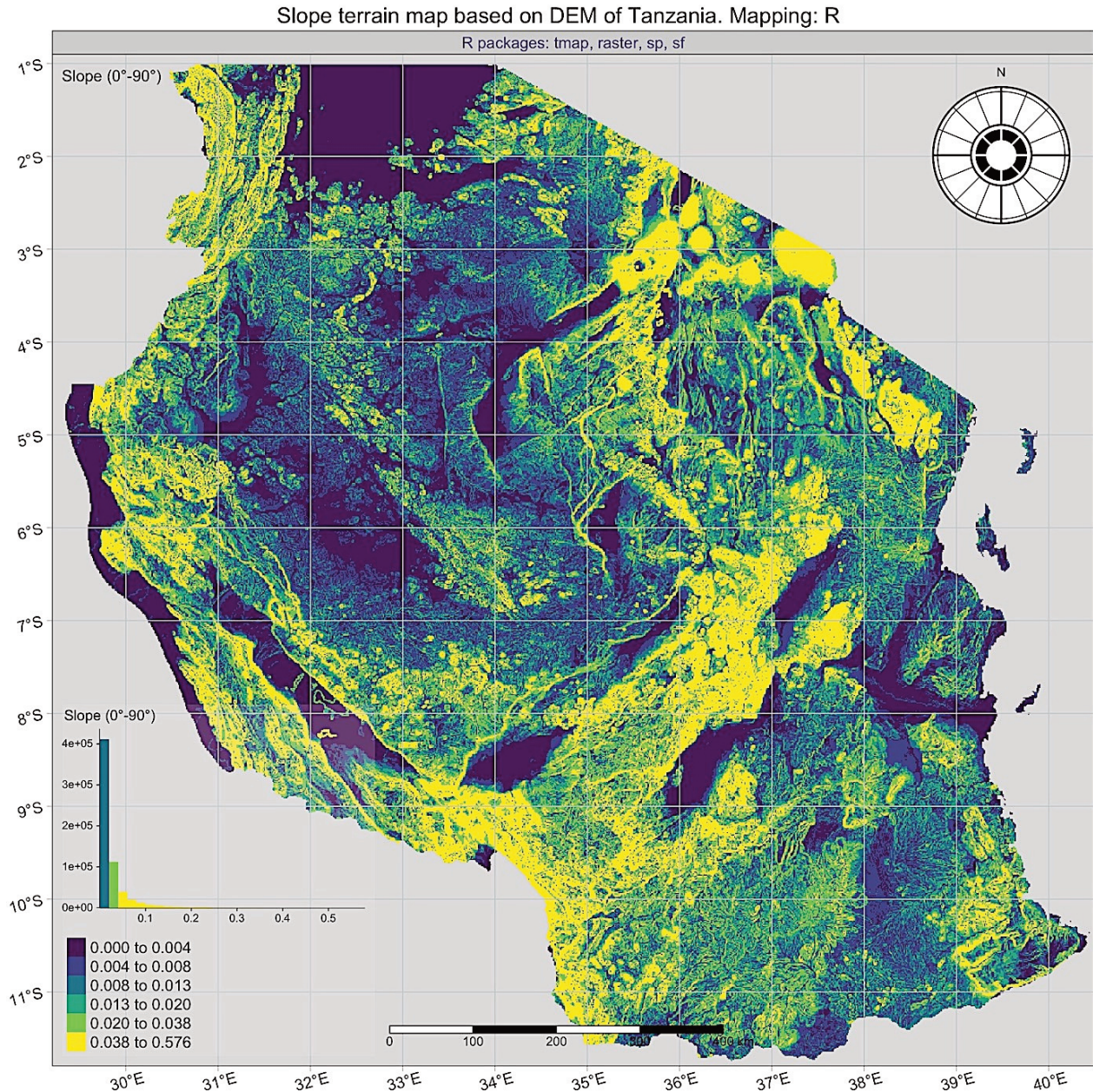
**Fig. 8.** Hillshade terrain visualization based on DEM of Tanzania. Mapping by R using packages ‘tmap’, ‘raster’, ‘sp’, ‘sf’. Map source: elaborated by the author.

the geomorphology, help to reveal impact factors contributing to the relief formation reflected in the local and regional landforms, depression and mountains.

The series of maps in Figs 6–9 reveal variations in the geomorphometric parameters. Aspect orientation by compass is modelled in Fig. 7 based on the DEM shown in Fig. 6. The hillshade is visualized in Fig. 8 and slope steepness in Fig. 9, showing the variability of the relief in Tanzania based on the DEM (Fig. 6). The comparison of these maps refers to the connection with the geomorphology formed

as a result of geologic evolution. This enables to gain new insights into the Earth observation data. The response of the local topography of Tanzania to external effects, such as river network, soil erosion and vegetation coverage, may become an extension of this research using additional large-scale datasets.

A series of geomorphometric analytical maps was plotted to show the variability of the relief in the country. The variety of the landforms of Tanzania can be studied in detail resorting to morphometric characteristics (slope



**Fig. 9.** Slope terrain visualization based on DEM of Tanzania. Mapping by R using packages ‘tmap’, ‘raster’, ‘sp’, ‘sf’. Map source: elaborated by the author.

in Fig. 9, aspect in Fig. 7, elevations based on the DEM in Fig. 6, hillshade in Fig. 8). The geomorphology can be explored and better analysed using geological and geophysical maps employed as benchmarks because the depressions and elevations (mountain regions) correspond to the major geologic and tectonic features: the Great Rift Valley, the Great Lakes. In turn, landscape forms such as the Masai Steppe or the Serengeti Plain follow general geomorphic structures of the Earth with corresponding types of soil and vegetation.

## DISCUSSION

Automatization is a continuous challenge in modern cartography (Msabi and Makonyo 2021; Klaučo et al. 2013a, 2013b; Muthoni et al. 2020). The importance of the effective mapping for environmental and geologic science is shown in relevant literature (Alphayo and Sharma 2018; Kempen et al. 2019; Ijumulana et al. 2020; Armadillo et al. 2020). Automated cartographic methods are demonstrated in this paper by scripting languages

GMT and R used for console-based mapping of Tanzania. The contribution of this study to the Earth science consists in increasing geo-information by presenting nine new maps of Tanzania.

With diverse performance of the cartographic tools and graphical analysis of data visualization, the results reveal that there is a correspondence between the geologic setting, geophysical anomalies and relief of Tanzania. The results show that both the shell script and GIS can be effectively used in cartography for comparative analysis of a regional setting retrieving data from geological, geophysical, geodetic, geomorphologic and topographic sources. A novel cartographic technique integrating GMT, QGIS and R is particularly useful in the analysis of maps that can be interpreted independently or comparatively. Unlike the traditional GIS, scripting functions are similar to programming with the possibility of reusing. Therefore, scripts can be repeated in similar studies in order to increase the speed and accuracy of mapping.

Comparable approaches for mapping Tanzania include examples of the traditional mapping. In fact, the majority of the existing maps of Tanzania use ArcGIS or QGIS (e.g. Schweikart et al. 2014; Nijbroek and Andelman 2016; Koskikala et al. 2020; Mseli et al. 2021). This is mostly explained by the relative simplicity of the traditional GIS. However, compared to GMT, limited functionality of GIS does not enable plotting maps in a fast and automated way, not to mention the print-quality graphics and design. This work continued the studies on Tanzania in the cartographic domain by incorporating the latest geophysical and geological datasets and advanced scripting. Thus, it is an advantage in further cartographic development enabling to link the geomorphological and geophysical data to better analyse the regional setting of Tanzania. The weak point of this approach might be that GMT is relatively difficult to master compared to the traditional GIS methods.

The presented maps may serve for the benefit of geospatial and geologic monitoring in Tanzania on local, regional and national scales. An integrated mapping can be applied for environmental monitoring of the national parks or as modelling in geologic prospecting. Further applications can include natural resource management, mineral resource exploration, data visualization and interpretation. A multi-scale approach comprises small-scale geophysical data, high-resolution topographic data and a medium-scale DEM by R. The cartographic focus on resolution reflects the need for the integration of multi-source data that may be of various origins and vary in precision. The geomorphological mapping aims to gain better insights into the landscapes reflected in the topography of Tanzania and into the corresponding major tectonic features, i.e. the East African Rift and the Great Lakes.

## CONCLUSIONS

This study has referred to two approaches of mapping: scripting and traditional methods. Its aim was to improve the existing cartographic methods towards more automated, accurate and fast workflows, achieved through scripting. In addition, a review on the geology and the environmental setting of Tanzania was carried out to analyse the geologic structure influencing the geomorphology of the country, formed by complex tectonic processes (Harpum 1970; Mwanukuzi 2008, 2009, 2011; Miller and Doyle 2014). Geologic information was considered to link the geologic and geomorphological processes expressed in relief.

The thematic overlay of several maps (geophysics, geomorphology, topography and geology) aimed to support correlations between the geologic, topographic and geophysical phenomena in the country, i.e. the East African Rift System, Lake Victoria, Lake Tanganyika and Lake Nyasa, the Serengeti Plain and the Masai Steppe. For example, a correspondence exists between the extent of the rifts, topographic heights and directions of the geological units. Anomalies in geophysical fields reflect gravity fluctuations which well correspond with the topographic depressions. Slope steepness, aspect and actual relief representation were compared with the 2D and 3D models. The presented methods of mapping have facilitated map interpretation and analysis: for the vector maps in QGIS, raster maps in GMT and numerical modelling in R.

The actuality of this study can be summarized in four ways: (1) new maps based on the high-resolution data contribute to an increase in information on Tanzania; (2) scripting approaches can serve as a guide for similar workflows; (3) maps made using open data sources can be reused in similar studies on Tanzania; (4) the possibility of combining various thematic layers can support the future research and thus the understanding regarding the geologic formation and geomorphology in the context of tectonic processes. It is recommended that a comparative analysis of various data (projections, data extent, vector and raster formats) be applied for further extended research. This paper has presented a combination of scripting and traditional methods for mapping Tanzania with the results referred to as a practical framework for organizing similar thematic projects.

**Acknowledgements.** The author cordially thanks the two anonymous reviewers and editor for comments, remarks and corrections on this article. Special thanks are addressed to Margit Sepp for her careful proofreading and copyediting of the manuscript. The map data have been obtained from the copyrighted OpenStreetMap at <https://www.openstreetmap.org>. The publication costs of this article were partially covered by the Estonian Academy of Sciences.

**1. GMT script used for plotting Fig. 1: Topographic map of Tanzania.**

```

ps=Topo_TZ.ps
gmt grdimage tz_relief.nc -Cocoon.cpt -R29/42/-13/1 -JM6.5i -I+a15+ne0.75 -Xc -P -K > $ps
gmt pscoast -R -J -ETZ -Gc -O -K >> $ps
echo "-10000 150 10000 150"> gray.cpt
gmt grdgradient tz_relief.nc -Nt1 -A45 -Gtanzania_topo_i.nc
gmt grdimage tz_relief.nc -Itanzania_topo_i.nc -J -Cgray.cpt -O -K >> $ps
gmt grdcontour tz_relief.nc -R -J -C500 -Wthinnest,dimgray -O -K >> $ps
gmt pscoast -R -J -O -K -Q >> $ps
gmt grdcontour tz_relief.nc -R -J -C500 -Wthinner,darkbrown -O -K >> $ps
gmt pscoast -R -J -P -Ia/thinner,blue -Na -N1/thickest,white -W0.1p -Df -O -K >> $ps
gmt psclip -JM -R tanzania.txt -O -K >> $ps
gmt grdimage tz_relief.nc -Cocoon.cpt -R29/42/-13/1 -JM6.5i -I+a15+ne0.75 -Xc -P -O -K >> $ps
gmt grdcontour tz_relief.nc -R -J -C500 -Wthinnest,navajowhite1 -O -K >> $ps
gmt pscoast -R -J -P -Ia/thinner,blue -Na -N1/thickest,khaki1 -W0.1p -Df -O -K >> $ps
gmt psclip -C -O -K >> $ps
gmt psscale -Dg27.5/-13.0+w17.7c/0.15i+v+o0.3/0i+ml -R -J -Cocoon.cpt \
  -Bg500f50a500+I"Color scale: 'geo' [R=-5358/3447, H=0, C=HSV]" -I0.2 -By+lm -O -K >> $ps
gmt psbasemap -R -J -Bpxg4f1a2 -Bpyg2f1a2 -Bsxg2 -Bsyg1 \
  -B+t"Topographic map of Tanzania" -O -K >> $ps
gmt psbasemap -R -J \
  -Lx14.5c/-1.3c+c50+w200k+I"Mercator projection. Scale (km)" +f -UBL/-15p/-38p -O -K >> $ps
gmt pstext -R -J -N -O -K -F+f10p,13,black+jLB -Gwhite@50 >> $ps << EOF
39.5 -6.1 Zanzibar City EOF
gmt psbasemap -R -J -O -K -DjTR+w3.2c+o-0.2c/-0.2c+stmp >> $ps
read x0 y0 w h < tmp
gmt pscoast -Rg -JG35.0/-6.0N/$w -Da -Glightgoldenrod1 -A5000 \
  -Bga -Wfaint -ETZ+gred -Sdodgerblue -O -K -X$x0 -Y$y0 >> $ps
gmt psxy -R -J -O -K -T -X-$ {x0} -Y-$ {y0}
>> $ps
gmt logo -Dx7.0/-2.0+o0.1i/0.1i+w2c -O -K >> $ps
gmt pstext -R0/10/0/15 -JX10/10 -X0.1c -Y12.5c -N -O -F+f10p,13,black+jLB >> $ps << EOF
3.0 9.0 Digital elevation data: SRTM/GEBCO, 15 arc sec resolution grid EOF
gmt psconvert Topo_TZ.ps -A1.5c -E720 -Tj -Z

```

**2. GMT script used for plotting Fig. 3: 3D model of Tanzania.**

```

gmt grdcut earth_relief_05m.grd -R29/42/-13/5 -Gtz_relief5.nc
gdalinfo -stats tz_relief5.nc
gmt makecpt -Cturbo.cpt -V -T-3527/4621 > myocean.cpt
ps=TZ_3D.ps
gmt grdcontour ETOPO1_Ice_g_gmt4.grd -JM10c -R29/42/-13/5 -p165/30 -C250 -Gd3c -Y3c \
  -U/-0.5c/-1c/"Data: World ETOPO 1/5 arc minute resolution grid" -P -K > $ps
gmt pscoast -R -J -p165/30 -P -Ia/thinner,blue \
  -Bpxg2f0.5a1 -Bpyg2f0.5a1 -Bsxg2 -Bsyg1 -Na -N1/thickest,tomato -W0.1p -Df -O -K >> $ps
gmt psscale -Dg26.0/-10+w8.0c/0.4c+v+o0.0/0.5c+ml -R -J -Cmyocean.cpt -Bg500f50a500+I"Color scale legend: depth
and height elevations (m)." -I0.2 -By+lm -O -K >> $ps
gmt grdview tz_relief5.nc -J -R -JZ3.5c -Cmyocean.cpt -p165/30 -Qsm -N-3500+glightgray -Wm0.07p -Wf0.1p,red -
B4/4/2000:"Bathymetry and topography (m)":ESwZ -S5 -Y5.0c -O -K >> $ps
gmt pstext -R -J -N -O -K \
-F+jTL+f9p,25,white+jLB+a-300 >> $ps << EOF

```

```

41.8 -10.0 Indian Ocean EOF
gmt pstext -R -J -N -O -K \
-F+jTL+f9p,26,black+jLB+a-350 >> $ps << EOF
42.5 -4.0 Masai
42.5 -4.8 Steppe EOF
gmt logo -Dx10.5/-5.5+o0.0c/-0.5c+w2c -O -K >> $ps
gmt pstext -R0/10/0/10 -Jx1 -X-0.8c -Y0.0c -N -O -K \
-F+f12p,25,black+jLB >> $ps << EOF
-0.5 10.0 Tanzania: 3D Topographic Mesh Model
EOF
gmt pstext -R0/10/0/10 -Jx1 -X0.0c -Y0.0c -N -O \
-F+f8p,0,black+jLB >> $ps << EOF
-0.5 9.5 Perspective view
-0.5 9.0 Azimuth rotation: 165/30\232
-0.5 8.5 Base map: 2D relief contour plot
-0.5 8.0 Region: Tanzania
EOF
gmt psconvert TZ_3D.ps -A1.2c -E720 -Tj -P -Z

```

### 3. GMT script used for plotting Fig. 4: Geoid gravitational model of Tanzania.

```

gmt grdconvert s45e00/w001001.adf geoid_TZ.grd
gdalinfo geoid_TZ.grd -stats
gmt makecpt -Cwysiwyg -T44/48/1 > colors.cpt
ps=Geoid_TZ.ps
gmt grdimage geoid_TZ.grd -Cwysiwyg -R29/42/-13/0 -JM6.5i -P -Xc -I+a15+ne0.75 -K > $ps
gmt grdcontour geoid_TZ.grd -R -J -C0.25 -A1+f9p,25,black -Wthinner,dimgray -O -K >> $ps
gmt psbasemap -R -J -Bpxg4f1a2 -Bpyg2f1a2 -Bsxg2 -Bsyg1 \
-B+t"Geoid gravitational model of Tanzania" -O -K >> $ps
gmt psscale -Dg27.5/-13.0+w16.5c/0.15i+v+o0.3/0i+ml+e -R -J -Ccolors.cpt \
-Bg5f1a10+l"Color scale wysiwyg: 20 well-separated RGB colors [C=RGB, -T0/40/1]" \
-I0.2 -By+lm -O -K >> $ps
gmt psbasemap -R -J \
-Lx14.5c/-1.3c+c50+w200k+l"Mercator projection. Scale (km)" +f -UBL/-10p/-38p -O -K >> $ps
gmt pscoast -R -J -P -Ia/thinnest,blue -Na -N1/thickest,white -Wthinner -Df -O -K >> $ps
gmt pstext -R -J -N -O -K \
-F+f9p,13,black+jLB -Gwhite@50 >> $ps << EOF
39.5 -6.1 Zanzibar City EOF
gmt logo -Dx7.0/-2.0+o0.1i/0.1i+w2c -O -K >> $ps
gmt pstext -R0/10/0/15 -JX10/10 -X0.1c -Y11.3c -N -O -F+f10p,13,black+jLB >> $ps << EOF
3.0 9.0 World geoid image EGM2008 vertical datum 2.5 min resolution EOF
gmt psconvert Geoid_TZ.ps -A0.5c -E720 -Tj -Z

```

### 4. GMT script used for plotting Fig. 5: Free-air gravity anomaly of Tanzania.

```

gmt img2grd grav_27.1.img -R29/42/-13/0 -Ggrav.grd -T1 -I1 -E -S0.1 -V
gmt grdcut grav.grd -R29/42/-13/0 -Gtz_grav.nc
gdalinfo -stats tz_grav.nc
gmt makecpt -Chaxby -T200/200/1 > colors.cpt
ps=Grav_TZ.ps
gmt grdimage tz_grav.nc -Ccolors.cpt -R29/42/-13/0 -JM6.5i -I+a15+ne0.75 -Xc -K > $ps
gmt psscale -Dg27.5/-13.0+w16.5c/0.15i+v+o0.3/0i+ml+e -R -J -Ccolors.cpt \
-Bg25f5a50+l"Color scale 'jet' (Dark to light blue, white, yellow and red [C=RGB] -183/278/1)" -I0.2 -
By+lmGal -O -K >> $ps

```

```

gmt grdcontour tz_grav.nc -R -J -C25 -A50 -Wthinnest -O -K >> $ps
gmt pscoast -R -J -P -Ia/thinner,blue -Na -N1/thickest,red -W0.1p -Df -O -K >> $ps
gmt psbasemap -R -J -Bpxg1f0.5a1 -Bpyg1f0.5a1 -Bsxg2 -Bsyg1 -B+t"Free-air gravity anomaly for Tanzania" -O -K
>> $ps
gmt psbasemap -R -J \
    -Lx14.5c/-1.5c+c50+w200k+l"Mercator projection. Scale (km)" +f -UBL/0p/-40p -O -K >> $ps
gmt psbasemap -R -J -Tdx1.0c/0.4c+w0.3i+f2+l+o0.15i -O -K >> $ps
gmt pstext -R -J -N -O -K \
-F+f9p,13,black+jLB -Gwhite@50 >> $ps << EOF
39.5 -6.1 Zanzibar City
EOF
gmt pstext -R0/10/0/15 -JX10/10 -X0.1c -Y11.3c -N -O \
-F+f10p,13,black+jLB >> $ps << EOF
3.0 9.3 Global satellite derived gravity grid (CryoSat-2 and Jason-1).
EOF
gmt psconvert Grav_TZ.ps -A0.5c -E720 -Tj -Z

```

## 5. GMT script used for plotting Figs 6–9: Geomorphometric mapping by R.

```

library(sp)
library(raster)
library(ncdf4)
library(RColorBrewer)
library(sf)
library(tmap)
alt = getData("alt", country = "Tanzania", path = tempdir())
slope = terrain(alt, opt = "slope")
plot(slope)
aspect = terrain(alt, opt = "aspect")
plot(aspect)
hill = hillShade(slope, aspect, angle = 40, direction = 270)
plot(hill)
plot(alt)
tmap_mode("plot") # here example for the slope map.
map1 <-
  tmap_style("gray") +
  tm_shape(slope, name = "Slope", title = "Slope") +
  tm_raster(title = "Slope (0\u00B0-90\u00B0)", palette="plasma", style="quantile", n = 6,
    breaks = c(5, 15, 30, 60, 75, 90),
    legend.show = T, legend.hist = T, legend.hist.z=0) +
  tm_scale_bar(width = 0.25, text.size = 0.8, text.color = "black",
    color.dark = "black", color.light = "white",
    position=c("left", "bottom"), lwd = 1) +
  tm_compass(type = "radar", position=c("right", "top"), size = 10.0) +
  tm_layout(scale = .8,
    main.title = "Slope terrain analysis based on DEM of Tanzania. Mapping: R", main.title.position = "center",
    main.title.color = "black", main.title.size = 1.0,
    title = "Slope (0\u00B0-90\u00B0)",
    title.color = "black", title.size = 1.0,
    title.position = c("left", "top"), panel.labels=c("R packages: tmap, raster, sp, sf"),
    panel.label.color = "darkslateblue",
    panel.label.size = 1.0, legend.position = c("left", "bottom"), legend.bg.color = "grey90",
    legend.bg.alpha = .2, legend.outside = FALSE, legend.width = .3, legend.height = .5,
    legend.hist.height = .2, legend.title.size = 0.9,

```



```

legend.text.size = 0.8, inner.margins = 0) +
tm_graticules(
  ticks=TRUE, lines=TRUE, labels.rot = c(15, 15), col="azure3", lwd=1, labels.size=1.0)
map1
tmap_save(map1, "Tanzania_Slope.jpg", dpi=300, height=10)

```

## REFERENCES

- Alphayo, S. M. and Sharma, M. P. 2018. Water quality mapping of Ruvu River in Tanzania. *American Journal of Applied Scientific Research*, **4**(4), 52–59.
- Amante, C. and Eakins, B. W. 2009. ETOPO1 Global Relief Model converted to PanMap layer format. *NOAA-National Geophysical Data Center*, PANGAEA.
- Armadillo, E., Rizzello, D., Pasqua, C., Pisani, P., Ghirotto, A., Kabaka, K. et al. 2020. Geophysical constraints on the Luhoi (Tanzania) geothermal conceptual model. *Geothermics*, **87**, 101875.
- Berry, L. and Hellen, J. 1972. Tanzania in Maps. *The Geographical Journal*, **138**(4), 525–525.
- Boniface, N., Schenk, V. and Appel, P. 2014. Mesoproterozoic high-grade metamorphism in pelitic rocks of the northwestern Ubendian Belt: Implication for the extension of the Kibaran intra-continental basins to Tanzania. *Precambrian Research*, **249**, 215–228.
- Bosworth, W. 1992. Mesozoic and early Tertiary rift tectonics in East Africa. *Tectonophysics*, **209**(1–4), 115–137.
- Bosworth, W. 1994. A model for the three-dimensional evolution of continental rift basins, north-east Africa. *Geologische Rundschau*, **83**, 671–688.
- Bosworth, W. and Maurin, A. 1993. Structure, geochronology and tectonic significance of the northern Suguta Valley (Gregory Rift), Kenya. *Journal of the Geological Society*, **150**(4), 751–762.
- Bosworth, W. and Strecker, M. R. 1997. Stress field changes in the Afro-Arabian rift system during the Miocene to Recent period. *Tectonophysics*, **278**(1–4), 47–62.
- Bosworth, W., Burke, K. and Strecker, M. 2000. Magma chamber elongation as an indicator of intraplate stress field orientation: “borehole breakout mechanism” and examples from the Late Pleistocene to Recent Kenya Rift Valley. In *Journal of the Virtual Explorer. Vol 2. J. Stress, Structure and Strain: a volume in honour of Win D. Means* (Jessell, M. and Urai, J., eds).
- BRGM (Bureau de Recherches Géologiques et Minières), University of Dar-es-Salaam, Tanzania Geological Survey. 2004. A 2,000,000 scale geology and mineral map of Tanzania. In *Proceedings of the 20th Colloquium of Africa Geology, Orleans, France, June 2–7, 2004* (Pinna, P., Muhongo, S., Mcharo, B. A., LeGoff, E., Deschamps, Y., Ralay, F. and Milesi, J. P., compilers). BRGM, Orleans.
- Brewer, C. A. 2003. A transition in improving maps: the ColorBrewer example. *Special issue of Cartography and Geographic Information Science*, **30**(2), 155–158.
- Brewer, C. A., Hatchard, G. W. and Harrower, M. A. 2003. ColorBrewer in print: a catalog of color schemes for maps. *Cartography and Geographic Information Science*, **30**(1), 5–32.
- Chorowicz, J. 2005. The East African Rift System. *Journal of African Earth Sciences*, **43**, 379–410.
- Collins, A. S., Reddy, S. M., Buchan, C. and Mruma, A. 2004. Temporal constraints on Palaeoproterozoic eclogite formation and exhumation (Usagaran Orogen, Tanzania). *Earth and Planetary Science Letters*, **224**(1–2), 175–192.
- Cooke, H. 1974. The coastal geomorphology of Tanga, Tanzania. *Geographical Review*, **64**(4), 517–535.
- Delvaux, D. 2001. Karoo rifting in western Tanzania: precursor of Gondwana break-up? In *Contributions to Geology and Paleontology of Gondwana. In honour of Prof. Dr. Helmut Wopfner*. Cologne, 111–125.
- Farr, T. G. and Kobrick, M. 2000. Shuttle Radar Topography Mission produces a wealth of data. *Eos Transactions American Geophysical Union*, **81**(48), 583–583.
- Farr, T. G., Rosen P. A., Caro E., Crippen R., Duren R., Hensley S. et al. 2007. The Shuttle Radar Topography Mission. *Reviews of Geophysics*, **45**(2), RG2004.
- Fritz, H., Tenczer, V., Hauzenberger, C. A., Wallbrecher, E., Hoinkes, G., Muhongo, S. and Mogessie, A. 2005. Central Tanzanian tectonic map (CTTM): A step forward to decipher Proterozoic structural events in the East African Orogen. *Tectonics*, **24**(6), TC6013.
- Gauger, S., Kuhn, G., Gohl, K., Feigl, T., Lemenkova, P. and Hillenbrand, C. 2007. Swath-bathymetric mapping. *Reports on Polar and Marine Research*, **557**, 38–45.
- GEBCO Compilation Group. 2020. *GEBCO 2020 Grid*. <https://doi.org/10.5285/a29c5465-b138-234d-e053-6c86abc040b9> (accessed 2021-11-25).
- Geological Survey of Tanzania. <https://www.gst.go.tz/strategic-aims-of-geological-mapping> (accessed 2021-12-13).
- Gombe, K. E., Asanuma, I. and Park, J.-G. 2017. Quantification of annual urban growth of Dar es Salaam Tanzania from Landsat time series data. *Advances in Remote Sensing*, **6**(3), 175–191.
- Graniczny, M., Gogolek, W., Ploch, I. and Urban, H. 2011. Fascinating geology of Tanzania. *Przegląd Geologiczny*, **59**(8), 561–565.
- Guiraud, R. and Bosworth, W. 1999. Phanerozoic geodynamic evolution of northeastern Africa and the northwestern Arabian platform. *Tectonophysics*, **315**(1–4), 73–104.
- Haidutov, I. S. 1976. A greenstone belt–basement relationship in the Tanganyika shield. *Geological Magazine*, **113**(1), 53–60.
- Hamdun, A. and Arakaki, T. 2015. Analysis of ground level ozone and nitrogen oxides in the City of Dar es Salaam and the rural area of Bagamoyo, Tanzania. *Open Journal of Air Pollution*, **4**(4), 224–238.
- Harpum, J. R. 1970. *Summary of the Geology of Tanzania. Series: Memoir (Tanzania. Mineral Resources Division), No. 1*. Mineral Resources Division, Dodoma.
- Harrower, M. and Brewer, C. A. 2003. ColorBrewer.org: An online tool for selecting colour schemes for maps. *The Cartographic Journal*, **40**(1), 27–37.

- Hijmans, R. J. and van Etten, J. 2012. Raster: Geographic analysis and modeling with raster data. R package version 2.0-12. <http://CRAN.R-project.org/package=raster>
- Höhle, J. 2021. Automated mapping of buildings through classification of DSM-based ortho-images and cartographic enhancement. *International Journal of Applied Earth Observations and Geoinformation*, **95**, 102237.
- Ijumulana, J., Mtalo, F. and Bhattacharya, P. 1997. Potential arsenic contamination in drinking water sources of Tanzania and its link with local geology. In *Environmental Arsenic in a Changing World* (Zhu, Y.-G., Guo, H., Bhattacharya, P. et al., eds). CRC Press, London, 62–63.
- Ijumulana, J., Ligate, F., Bhattacharya, P., Mtalo, F. and Zhang, C. 2020. Spatial analysis and GIS mapping of regional hotspots and potential health risk of fluoride concentrations in groundwater of northern Tanzania. *Science of the Total Environment*, **735**, 139584.
- James, T. C. 1967. Thermal springs in Tanzania. *Transactions of the Institution of Mining and Metallurgy*, **76**(729), 168–174.
- John, R. 2020. Flooding in informal Settlements: potentials and limits for household adaptation in Dar es Salaam City, Tanzania. *American Journal of Climate Change*, **9**(2), 68–86.
- Kabete, J. M., McNaughton, N. J., Groves, D. I. and Mruma, A. H. 2012a. Reconnaissance SHRIMP U–Pb zircon geochronology of the Tanzania Craton: evidence for Neoproterozoic granitoid–greenstone belts in the Central Tanzania Region and the Southern East African Orogen. *Precambrian Research*, **216–219**, 232–266.
- Kabete, J. M., Groves, D. I., McNaughton, N. J. and Mruma, A. H. 2012b. A new tectonic and temporal framework for the Tanzanian Shield: Implications for gold metallogeny and undiscovered endowment. *Ore Geology Reviews*, **48**, 88–124.
- Kagya, M., Ntomola, S. J. and Mpanju, F. 1991. The source rock of the Nyasa Rift Basin and oil shows of Tanzania. *Journal of Southeast Asian Earth Sciences*, **5**(1–4), 407–419.
- Kajato, H. 1982. Gas strike spurs search for oil in Tanzania. *Oil Gas Journal*, **123**, 123–131.
- Kapilima, S. 2003. Tectonic and sedimentary evolution of the coastal basin of Tanzania during the Mesozoic times. *Tanzania Journal of Science*, **29**(1), 1–16.
- Kearey, P., Klepeis, K. A. and Vine, F. J. 2009. *Global Tectonics*. John Wiley & Sons, Hoboken, New Jersey, NJ.
- Kempen, B., Dalsgaard, S., Kaaya, A. K., Chamuya, N., Ruipérez-González, M., Pekkarinen, A., Walsh, M.G. 2019. Mapping topsoil organic carbon concentrations and stocks for Tanzania. *Geoderma*, **337**, 164–180.
- Kent, P. E., Hunt, J. A. and Johnstone, D. W. 1971. *Geology and Geophysics of Coastal Tanzania. Series: Geophysical Paper, No. 6*. HMSO, London.
- Klaučo, M., Gregorová, B., Stankov, U., Marković, V. and Lemenkova, P. 2013a. Determination of ecological significance based on geostatistical assessment: a case study from the Slovak Natura 2000 protected area. *Open Geosciences*, **5**(1), 28–42.
- Klaučo, M., Gregorová, B., Stankov, U., Marković, V. and Lemenkova, P. 2013b. Interpretation of landscape values, typology and quality using methods of spatial metrics for ecological planning. In *Proceedings of the 54th International Scientific Conference “Environmental and Climate Technologies”*, Riga, Latvia, October 14–16, 2013.
- Klaučo, M., Gregorová, B., Stankov, U., Marković, V. and Lemenkova, P. 2014. Landscape metrics as indicator for ecological significance: assessment of Sitno Natura 2000 sites, Slovakia. In *Ecology and Environmental Protection. Proceedings of the International Conference, Minsk, Belarus, March 19–20, 2014*. BSU Press, 85–90.
- Klaučo, M., Gregorová, B., Koleda, P., Stankov, U., Marković, V. and Lemenkova, P. 2017. Land planning as a support for sustainable development based on tourism: A case study of Slovak Rural Region. *Environmental Engineering and Management Journal*, **16**(2), 449–458.
- Koskikala, J., Kisanga, D. and Käyhkö, N. 2020. Biophysical regions of the Southern Highlands, Tanzania: regionalization in a data scarce environment with open geospatial data and statistical methods. *Journal of Maps*, **16**(2), 376–387.
- Koskinen, J., Leinonen, U., Vollrath, A., Ortmann, A., Lindquist, E., d’Annunzio, R., Pekkarinen, A. and Käyhkö, N. 2019. Participatory mapping of forest plantations with Open Foris and Google Earth Engine. *ISPRS Journal of Photogrammetry and Remote Sensing*, **148**, 63–74.
- Lemenkova, P. 2011. *Seagrass mapping and monitoring along the coasts of Crete, Greece*. M.Sc. Thesis. University of Twente, the Netherlands.
- Lemenkova, P. 2019a. Statistical analysis of the Mariana Trench geomorphology using R programming language. *Geodesy and Cartography*, **45**(2), 57–84.
- Lemenkova, P. 2019b. GMT based comparative analysis and geomorphological mapping of the Kermadec and Tonga Trenches, Southwest Pacific Ocean. *Geographia Technica*, **14**(2), 39–48.
- Lemenkova, P. 2019c. Geomorphological modelling and mapping of the Peru-Chile Trench by GMT. *Polish Cartographical Review*, **51**(4), 181–194.
- Lemenkova, P. 2019d. AWK and GNU Octave programming languages integrated with generic mapping tools for geomorphological analysis. *GeoScience Engineering*, **65**(4), 1–22.
- Lemenkova, P. 2020a. GEBCO Gridded Bathymetric Datasets for mapping Japan Trench geomorphology by means of GMT Scripting Toolset. *Geodesy and Cartography*, **46**(3), 98–112.
- Lemenkova, P. 2020b. Hyperspectral vegetation indices calculated by Qgis using Landsat Tm image: a case study of Northern Iceland. *Advanced Research in Life Sciences*, **4**(1), 70–78.
- Lemenkova, P. 2020c. Python libraries matplotlib, seaborn and pandas for visualization geospatial datasets generated by QGIS. *Scientific Annals of “Alexandru Ioan Cuza” University of Iași*, **64**(1), 13–32.
- Lemenkova, P. 2020d. Using R packages ‘tmap’, ‘raster’ and ‘ggmap’ for cartographic visualization: An example of dem-based terrain modelling of Italy, Apennine Peninsula. *Zbornik radova – Geografski fakultet Univerziteta u Beogradu*, **68**, 99–116.
- Lemenkova, P. 2020e. Applying automatic mapping processing by GMT to bathymetric and geophysical data: Cascadia

- Subduction Zone, Pacific Ocean. *Journal of Environmental Geography*, **13**(3–4), 15–26.
- Lemenkova, P. 2021a. Topography of the Aleutian Trench southeast off Bowers Ridge, Bering Sea, in the context of the geological development of North Pacific Ocean. *Baltica*, **34**(1), 27–46.
- Lemenkova, P. 2021b. Geodynamic setting of Scotia Sea and its effects on geomorphology of South Sandwich Trench, Southern Ocean. *Polish Polar Research*, **42**(1), 1–23.
- Lemenkova, P. 2021c. SAGA GIS for computing cultispectral vegetation indices by Landsat TM for mapping vegetation greenness. *Contemporary Agriculture*, **70**(1–2), 67–75.
- Lemenkova, P. 2021d. The visualization of geophysical and geomorphologic data from the area of Weddell Sea by the generic mapping tools. *Studia Quaternaria*, **38**(1), 19–32.
- Lemenkova, P. 2021e. Mapping topographic, geophysical and gravimetry data of Pakistan – a contribution to geological understanding of Sulaiman Fold Belt and Muslim Bagh Ophiolite Complex. *Geophysica*, **56**(1–2), 3–26.
- Lemenkova, P. 2021f. Dataset compilation by GRASS GIS for thematic mapping of Antarctica: Topographic surface, ice thickness, subglacial bed elevation and sediment thickness. *Czech Polar Reports*, **11**(1), 67–85.
- Lindh, P. and Lemenkova, P. 2021. Evaluation of different binder combinations of cement, slag and CKD for S/S treatment of TBT contaminated sediments. *Acta Mechanica et Automatica*, **15**(4), 236–248.
- Maboko, M. A. H. and Basu, N. K. 1987. The geochemistry of mafic and ultramafic rocks in the Wami River granulite complex, central coastal Tanzania. *Journal of African Earth Sciences*, **6**(6), 845–850.
- Masalu, D. C. P. 2008. An Overview of the bathymetry and geomorphology of the Tanzania EEZ. *The Open Oceanography Journal*, **2**, 28–33.
- Miller, B. W. and Doyle, M. W. 2014. Rangeland management and fluvial geomorphology in northern Tanzania. *Geomorphology*, **214**, 366–377.
- Mjili, A. S. and Mulibo, G. D. 2018. Petrophysical analysis of reservoir rocks at Mchungwa well in Block 7 offshore, Tanzania: geological implication on the reservoir quality. *Open Journal of Geology*, **8**, 764–780.
- Msabi, M. M. and Makonyo, M. 2021. Flood susceptibility mapping using GIS and multi-criteria decision analysis: A case of Dodoma region, central Tanzania. *Remote Sensing Applications: Society and Environment*, **21**, 100445.
- Mseli, Z. H., Mwegoha, W. J. and Gaduputi, S. 2021. Identification of potential groundwater recharge zones at Makutupora basin, Dodoma Tanzania. *Geology, Ecology, and Landscapes*. <https://doi.org/10.1080/24749508.2021.1952763>
- Muthoni, F. K., Bekunda, M., Hoeschle-Zeledon, I., Sseguya, H., Kizito, F., Baijukya, F. and Mruma, S. 2020. A compendium of maps on biophysical and socioeconomic context, and suitability of maize varieties and inorganic fertilizers in Tanzania. IITA, Ibadan.
- Mvile, B. N., Abu, M., Osinowo, O. O., Marobhe, I. M. and Olayinka, A. I. 2020. An overview of the geology of Tanga onshore basin: implication for hydrocarbon potential, Tanzania, East Africa. *Journal of Sedimentary Environments*, **5**(3), 267–277.
- Mwanukuzi, P. K. 2008. Using GIS for decision making: the case of Kidunda dam in Morogoro, Tanzania. *Geographical Journal*, **174**(2), 161–164.
- Mwanukuzi, P. K. 2009. Impact of eucalyptus and pine growing on rural livelihood: the lesson from Bukoba area, north western Tanzania. *African Journal of Ecology*, **47**, 105–109.
- Mwanukuzi, P. K. 2011. Impact of non livelihood based land management on land resources: the case of upland watersheds in Uporoto Mountains, South West Tanzania. *Geographical Journal*, **177**(1), 27–34.
- NASA Shuttle Radar Topography Mission (SRTM). 2013. Shuttle Radar Topography Mission (SRTM) Global. Distributed by OpenTopography. <https://doi.org/10.5069/G9445JDF> (accessed 2022-03-30).
- Nijbroek, R. P. and Andelman, S. J. 2016. Regional suitability for agricultural intensification: a spatial analysis of the Southern Agricultural Growth Corridor of Tanzania. *International Journal of Agricultural Sustainability*, **14**(2), 231–247.
- OpenStreetMap contributors. <https://www.openstreetmap.org> (accessed 2021-12-08).
- Pavlis, N. K., Holmes, S., Kenyon, S. C. and Factor, J. K. 2012. The development and evaluation of the Earth Gravitational Model 2008 (EGM2008). *Journal of Geophysical Research*, **117**, B04406.
- Persits, F. M., Ahlbrandt, T. S., Tuttle, M. L., Charpentier, R. R., Brownfield, M. E. and Takahashi, K. I. 1997. Maps showing geology, oil and gas fields and geological provinces of Africa. U.S. Geological Survey Open-File Report 97-470-A.
- Pinna, P., Cocherie, A., Thieblemont, D., Feybesse, J. and Lagny, P. 1996. Geodynamic evolution and metallogenic controls in the East-African Craton (Tanzania, Kenya, Uganda). Scientific and technical communications. *Chronique de la Recherche Minière*, **525**, 33–47
- Pinna, P., Cocherie, A., Thieblemont, D. and Jezequel, P. 2000. The Kisii Group of western Kenya: an end-Archaean (2.53 Ga) late-orogenic volcano-sedimentary sequence. *Journal of African Earth Sciences*, **30**(1), 79–97.
- Pollastro, R. M., Karshbaum, A. S. and Viger, R. J. 1999. Maps showing geology, oil and gas fields and geologic provinces of the Arabian Peninsula. U.S. Geological Survey Open-File Report 97-470-B.
- QGIS.ORG Association. 2021. QGIS A Free and Open Source Geographic Information System. <http://www.qgis.org> (accessed 2021-10-15).
- Quennell, A. M. 1956. 1: 2,000,000 Geological Map of Tanzania.
- Quennell, A. M., McKinley, A. C. M. and Aiken, W. G. 1956. *Summary of the Geology of Tanganyika: Introduction and Stratigraphy*. Part 1. Tanganyika Geological Survey Department Memoir 1.
- R Core Team. 2021. R: A language and environment for statistical computing. R Foundation for Statistical Computing, Vienna, Austria. <https://www.R-project.org>
- RStudio Team. 2017. RStudio: Integrated Development Environment for R. RStudio, Inc., Boston, MA. <https://www.RStudio.com> (accessed 2021-11-14).
- Sandwell, D. T. and Smith, W. H. F. 1997. Marine gravity anomaly from Geosat and ERS 1 satellite altimetry. *Journal of Geophysical Research*, **102**(B5), 10039–10054.

- Sandwell, D. T., Müller, R. D., Smith, W. H. F., Garcia, E. and Francis, R. 2014. New global marine gravity model from CryoSat-2 and Jason-1 reveals buried tectonic structure. *Science*, **346**(6205), 65–67.
- Schenke, H. W. and Lemenkova, P. 2008. Zur Frage der Meeresboden-Kartographie: Die Nutzung von AutoTrace Digitizer für die Vektorisierung der Bathymetrischen Daten in der Petschora-See. *Hydrographische Nachrichten*, **81**, 16–21.
- Schweikart, J., Franke, C. and Henke, S. 2014. Atlas of health infrastructure for the Mbeya Region in Tanzania – Regional atlases as information source using geoinformation systems. *Journal of Maps*, **10**(4), 620–629.
- Scoon, R. 2018. *Geology of National Parks of Central/Southern Kenya and Northern Tanzania*. Springer, Cham.
- Suetova, I. A., Ushakova, L. A. and Lemenkova, P. 2005. Geoinformation mapping of the Barents and Pechora Seas. *Geography and Natural Resources*, **4**, 138–142.
- Temple, P. H. and Rapp, A. 1972. Landslides in the Mgeta Area, Western Uluguru Mountains, Tanzania. *Geografiska Annaler: Series A, Physical Geography*, **54**(3–4), 157–193.
- Tennekes, M. 2018. tmap: Thematic maps in R. *Journal of Statistical Software*, **84**(6), 1–39.
- Wessel, P., Luis, J. F., Uieda, L., Scharroo, R., Wobbe, F., Smith, W. H. F. and Tian, D. 2019. The Generic Mapping Tools version 6. *Geochemistry, Geophysics, Geosystems*, **20**, 5556–5564.

## **Ruumiandmestiku visualiseerimine Tansaania kraatoni Serengeti tasandiku ja Ida-Aafrika riftioru näitel**

Polina Lemenkova

Planeedi keskkonnaprotsesside analüüsimisel on oluline roll ruumiandmetel ja nende visualiseerimisel. Erinevatest allikatest pärit andmete maht suureneb tänapäeval kiiresti ning koos sellega peavad arenema ka kartograafilised meetodid. Keerulise geoloogilise ehitusega piirkondade kaardistamine nõuab kompleksset käsitlust. Käesolevas töös on analüüsitud ja visualiseeritud Tansaania ruumiandmeid, kasutades vahendeid nagu Generic Mapping Tools (GMT), R ja QGIS. Viis loodud kaarti iseloomustavad looduslikke tingimusi (geoloogia, geofüüsika, topograafia) ning neli visualiseerivad geomorfomeetrist analüüsi. Kahemõõtmelised kaardid ja kolmemõõtmeline pinnamudel loodi kasutades konventsionaalset GIS tarkvara koos skriptimisega. Geomorfomeetrist kaardid (kõrgusmudel, nõlvad, varjutus) loodi statistikatarkvara R skriptide abil.