



**HAL**  
open science

## Ground-based photometry of space-based transit detections: photometric follow-up of the CoRoT mission

H. J. Deeg, M. Gillon, A. Shporer, D. Rouan, B. Stecklum, S. Aigrain, A. Alapini, J. M. Almenara, R. Alonso, M. Barbieri, et al.

► **To cite this version:**

H. J. Deeg, M. Gillon, A. Shporer, D. Rouan, B. Stecklum, et al.. Ground-based photometry of space-based transit detections: photometric follow-up of the CoRoT mission. *Astronomy & Astrophysics - A&A*, 2009, 506, pp.343-352. 10.1051/0004-6361/200912011 . hal-03646247

**HAL Id: hal-03646247**

**<https://hal.science/hal-03646247v1>**

Submitted on 22 May 2022

**HAL** is a multi-disciplinary open access archive for the deposit and dissemination of scientific research documents, whether they are published or not. The documents may come from teaching and research institutions in France or abroad, or from public or private research centers.

L'archive ouverte pluridisciplinaire **HAL**, est destinée au dépôt et à la diffusion de documents scientifiques de niveau recherche, publiés ou non, émanant des établissements d'enseignement et de recherche français ou étrangers, des laboratoires publics ou privés.

## Ground-based photometry of space-based transit detections: photometric follow-up of the CoRoT mission<sup>★</sup>

H. J. Deeg<sup>1</sup>, M. Gillon<sup>2,3</sup>, A. Shporer<sup>4</sup>, D. Rouan<sup>5</sup>, B. Stecklum<sup>6</sup>, S. Aigrain<sup>7</sup>, A. Alapini<sup>7</sup>, J. M. Almenara<sup>1</sup>, R. Alonso<sup>8</sup>, M. Barbieri<sup>8</sup>, F. Bouchy<sup>9</sup>, J. Eislöffel<sup>6</sup>, A. Erikson<sup>10</sup>, M. Fridlund<sup>11</sup>, P. Eigmüller<sup>6</sup>, G. Handler<sup>12</sup>, A. Hatzes<sup>6</sup>, P. Kabath<sup>10</sup>, M. Lendl<sup>12</sup>, T. Mazeh<sup>4</sup>, C. Moutou<sup>8</sup>, D. Queloz<sup>2</sup>, H. Rauer<sup>10,13</sup>, M. Rabus<sup>1</sup>, B. Tingley<sup>1</sup>, and R. Titz<sup>10</sup>

<sup>1</sup> Instituto de Astrofísica de Canarias, C. via Lactea S/N, 38205 La Laguna, Tenerife, Spain  
e-mail: hdeeg@iac.es

<sup>2</sup> Observatoire de Genève, Université de Genève, 51 chemin des Maillettes, 1290 Sauverny, Switzerland

<sup>3</sup> Institut d'Astrophysique et de Géophysique, Université de Liège, 4000 Liège, Belgium

<sup>4</sup> School of Physics and Astronomy, Tel Aviv University, Tel Aviv 69978, Israel

<sup>5</sup> LESIA, Observatoire de Paris-Meudon, 5 place Jules Janssen, 92195 Meudon, France

<sup>6</sup> Thüringer Landessternwarte, Sternwarte 5, Tautenburg 5, 07778 Tautenburg, Germany

<sup>7</sup> School of Physics, University of Exeter, Stocker Road, Exeter EX4 4QL, UK

<sup>8</sup> Laboratoire d'Astrophysique de Marseille, 38, rue Frédéric Joliot-Curie, 13388 Marseille Cedex 13, France

<sup>9</sup> Institut d'Astrophysique de Paris, Université Pierre & Marie Curie, 98bis Bd Arago, 75014 Paris, France

<sup>10</sup> Institute of Planetary Research, DLR, Rutherfordstr. 2, 12489 Berlin, Germany

<sup>11</sup> Research and Scientific Support Department, ESTEC/ESA, 2200 Noordwijk, The Netherlands

<sup>12</sup> Institute of Astronomy, University of Vienna, Türkenschanzstr. 17, 1180 Vienna, Austria

<sup>13</sup> Center for Astronomy and Astrophysics, TU Berlin, Hardenbergstr. 36, 10623 Berlin, Germany

Received 9 March 2009 / Accepted 9 July 2009

### ABSTRACT

The motivation, techniques and performance of the ground-based photometric follow-up of transit detections by the CoRoT space mission are presented. Its principal *raison d'être* arises from the much higher spatial resolution of common ground-based telescopes in comparison to CoRoT's cameras. This allows the identification of many transit candidates as arising from eclipsing binaries that are contaminating CoRoT's lightcurves, even in low-amplitude transit events that cannot be detected with ground-based observations. For the ground observations, “on” – “off” photometry is now largely employed, in which only a short timeseries during a transit and a section outside a transit is observed and compared photometrically. CoRoT planet candidates' transits are being observed by a dedicated team with access to telescopes with sizes ranging from 0.2 to 2 m. As an example, the process that led to the rejection of contaminating eclipsing binaries near the host star of the Super-Earth planet CoRoT-7b is shown. Experiences and techniques from this work may also be useful for other transit-detection experiments, when the discovery instrument obtains data with a relatively low angular resolution.

**Key words.** methods: observational – techniques: photometric – stars: planetary systems – stars: binaries: eclipsing

### 1. Introduction

The scientific output of the CoRoT mission is strongly dependent on a dedicated ground-based observing program. This program began prior to the launch, with observations for the selection of the sample fields and for the characterisation of the targets therein; described by [Deleuil et al. \(2006, 2009\)](#). The current inflight follow-up is centered on the rejection of false alarms among planet-candidates found by the spacecraft, on the verification of candidates as planets, and on the characterisation of verified planets in more detail. The secure rejection of false alarms and – if possible – the positive verification of a candidate's planetary nature is essential to achieve the mission's

primary scientific goal of delivering reliable exoplanet detections. For the candidate verification process, a multi-step follow-up strategy is used that follows the scheme outlined by [Alonso et al. \(2004\)](#) which is designed to save time, cost, and effort. It begins with relatively simple tests (e.g. detailed analysis of CoRoT's lightcurves; analysis of snapshots of candidate fields; transit-observations on small instruments) and for surviving candidates progresses to more complicated and expensive ones (in terms of telescope time, instrumental requirements, and efforts in data-analysis). Photometric follow-up observations form an integral part of this approach and are complementary to low- and high-resolution spectroscopy undertaken for stellar classification and radial velocity measurements. In the mission's preparatory phase, the organizational structure was laid for two working groups, one on spectroscopy and one on photometry. The later one's work is described in the following sections, giving

<sup>★</sup> The CoRoT space mission, launched on December 27th 2006, has been developed and is operated by CNES, with the contribution of Austria, Belgium, Brasil, ESA (RSSD and Science Program), Germany and Spain.

the motivation for the photometric follow-up observations, the techniques used and some examples of the results obtained.

## 2. The motivation for ground-based follow-up

At the onset, it may appear counterintuitive that ground-based photometric follow-up may be of any use, considering the generally much higher photometric precision of the space-based discovery instrument. The essence of the ground-based follow-up photometry arises from the higher angular resolution achievable compared to photometry from the discovery instrument. In the case of CoRoT its optical resolution is rather poor, with a PSF that contains 50% of its flux in an elongated shape of about  $35'' \times 23''$  size<sup>1</sup> and photometry is measured through apertures of corresponding sizes (Fig. 1). As will be shown in later sections, the increase in spatial resolution from ground-based instruments allows the identification of false alarms even if the originally detected transit-event cannot be reproduced due to the much lower photometric precision from the ground.

There are several sources of false alarms in the detection of transiting planets, mostly related to eclipsing binary (EB) stars; for an overview see Brown (2003). Many of these can be identified from a detailed analysis of the discovery lightcurves in combination with knowledge about the target stars' stellar types, based on indicators like the duration, depth, shape or color of transits, or from the presence of off-eclipse variability or faint secondary transits; e.g. Eislöffel et al. (2004) and Barge et al. (in prep.). Of particular worry are faint EBs close to a target star, whose light falls within the aperture of the target. These contaminating eclipsing binaries (CEB) may generate transit-like signals that are photometrically undistinguishable from planetary transits. Estimations by Brown (2003) show that CEBs are the most frequent source of false alarms in ground-based transit searches. Considering the large PSF of CoRoT the dominance of this source of false alarms may be even more pronounced. This motivates the CoRoT ground-based photometric follow-up program, which is consequently geared towards the detection of CEBs. Its principles, which are valid for any discovery experiment with initial photometry based on data of relatively low angular resolution, are introduced in more detail in the next section.

## 3. Technical considerations for the photometric identification of false alarms

### 3.1. Resolving contaminating sources in images of higher resolution

In the following, we consider as the *target* the star that has been intended to be observed in a given photometric lightcurve. The probability  $P_{\text{detc}}$  to detect a contaminating source through observations with a higher angular resolution may be approximated by the expression:

$$P_{\text{detc}} = 1 - \frac{A_{\text{psf,hi}}}{A_{\text{psf,lo}}} \quad (1)$$

where  $A_{\text{psf,hi}}$  and  $A_{\text{psf,lo}}$  are the areas of the PSF in the high and low resolution imaging, respectively. This equation is based on the assumption that the contaminating object has no physical relation with the target and that its position relative to the target

is at random. Then, for example, a reduction of the PSF size from CoRoT's  $630 \text{ arcsec}^2$  to one of  $1.1 \text{ arcsec}^2$  (corresponding to a PSF with a diameter of  $1.2''$ ) leads to the expectation that 99.8% of the contaminating stars will be found as separate sources in the higher-resolution imaging. Photometric follow-up with higher angular resolution than the discovery instrument is hence able to resolve most cases of signals from unbound contaminating stars that appear merged into the time-series obtained by the low-resolution discovery instrument.

We note that the remaining inability of the photometric follow-up to resolve extremely close contaminants, or to resolve contaminants that are in a physical triple with the target, is complementary to spectroscopic observations, which can generally detect and distinguish the signals of contaminants close enough to fall within the spectrometer's entry aperture. The detection of contaminants at larger target distances is however better done with photometry, since spectroscopic observations will not show any indication of the false alarm source in such cases. In the particular case of searches for small planets, a spectroscopic non-detection of radial velocity variations presents an ambiguous result as it may also indicate that there is a planet, but with a mass too small to be detectable by the instrument; additional photometric follow-up may therefore resolve this ambiguity.

### 3.2. The identification of contaminating variable stars

Let us assume that the discovery instrument reports a transit-like signal with a variation<sup>2</sup> of  $(\Delta F/F)_s$ . The flux  $F_s$  reported by the instrument is given by the sum:

$$F_s = g \left( k_t F_t + \sum k_i F_i \right) \quad (2)$$

where  $g$  is an instrument gain,  $F_t$  is the flux of the target star; the  $F_i$  are the fluxes of contaminating stars, and the "confusion factors"  $k_t$  and  $k_i$  are the fractions of light in the stellar PSF which fall into the given photometric aperture.

A positive detection by the discovery instrument is then indicated if its signal corresponds to a brightness variation  $\Delta F_i/F_t$  that is intrinsic to the target, that is if

$$(\Delta F/F)_s = \frac{k_t \Delta F_t}{k_t F_t + \sum k_i F_i} \approx (\Delta F/F)_t \quad (3)$$

where the right-hand approximation assumes a contaminating flux that is small compared to the target flux, e.g.  $\sum k_i F_i \ll F_t$ . The negative case or "false alarm condition" is then given if the following holds, where one of the contaminating stars (denoted with subscript  $c$ , where  $c \in i$ ) generates the discovery signal:

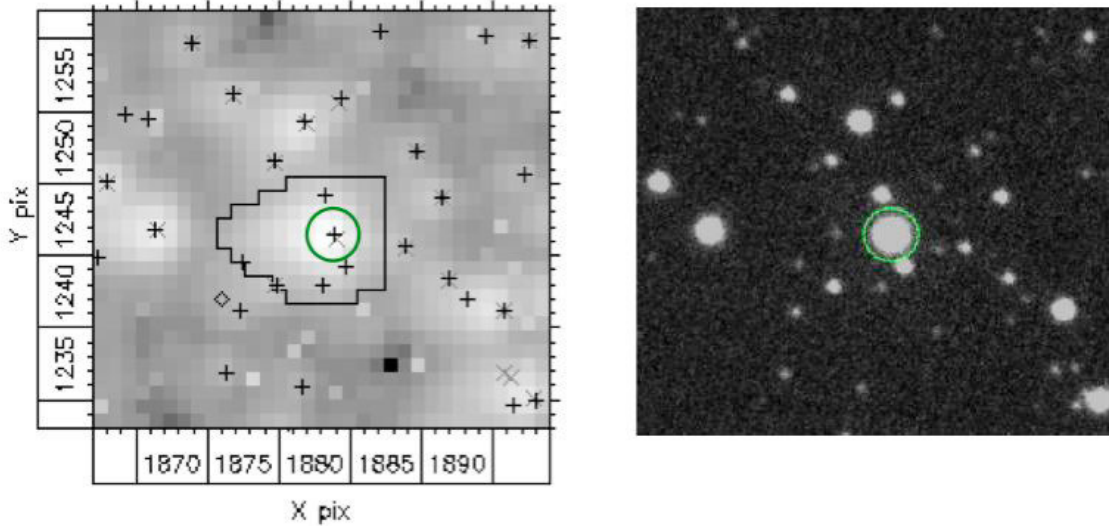
$$(\Delta F/F)_s = \frac{k_c \Delta F_c}{k_t F_t + \sum k_i F_i} \quad (4)$$

Follow-up photometry may now do two things:

- It may attempt to *verify the positive case* of Eq. (3), by reproducing the discovery signal, showing that this signal truly arises from the target. In transit surveys of very high photometric precision, such as in space missions, low amplitude transit signals are however also discovered, and a reliable reproduction of these transits in ground-based follow-up will often be impossible;

<sup>1</sup> The PSF's irregular shape is due to the dispersion device in the CoRoT lightpath; size and shape depend also on the stellar color and the position in the focal plane.

<sup>2</sup> In this work, we consider both the flux-variation from a transit-signal and the corresponding magnitude variation as values that are always positive; hence for small values of  $\Delta F/F \ll 1$ , the conversion to magnitudes is given by  $\Delta m = -2.5 \log(1 - \Delta F/F) \approx 1.087 \Delta F/F$ .



**Fig. 1.** *Left:* section of a CoRoT target field around a target star (LRC01\_E1\_2376, marked with a circle) as obtained by the satellite. The irregular shape around it indicates the aperture from which photometry is extracted. All stars contained in the Exo-Dat data base are marked by crosses – several contaminating stars fall within the target aperture. The image size is about  $1'$ . *Right:* the same field acquired with the CCD camera of the IAC 80cm telescope in moderate ( $1.5''$ ) seeing.

- Ground-based follow-up may attempt to *falsify the negative case* of Eq. (4), showing that none of the contaminating stars is generating the discovery signal  $(\Delta F/F)_s$ . Typically, the follow-up will show that none of the contaminating stars exhibit brightness variations that are sufficiently strong to be the cause of a false alarm.

In the following, the task of “falsifying the false alarm condition” is being developed in more detail. For simplicity, we consider only one contaminating star and also set  $k_t \approx 1$ , meaning that the target’s PSF falls almost entirely into the photometric aperture.

For a contaminating star with  $F_c k_c \ll F_t$ , meaning that it contributes only with a small fraction to the light falling into the aperture, we may then rewrite the false alarm condition as:

$$\frac{\Delta F_c}{F_c} \approx \left( \frac{F_t}{F_c} \right) k_c^{-1} (\Delta F/F)_s. \quad (5)$$

If the confusion factor  $k_c$  is unknown, a modified condition useful to identify *potential* false alarms may also be derived by setting  $k_c = 1$ ; these alarms are then identified if:

$$\frac{\Delta F_c}{F_c} \gtrsim \left( \frac{F_t}{F_c} \right) (\Delta F/F)_s. \quad (6)$$

This modified false alarm condition is useful for a first search for contaminating variable stars. It will identify all of them; it may however also flag contaminating stars whose brightness variation is really too weak to be the source for a false alarm. For contaminants identified by this condition a more detailed analysis is then needed; e.g. by testing against the previous Eq. (5).

In order to avoid separate equations for the cases of known or unknown  $k_c$ , an *unknown*  $k_c$  should be replaced by  $k_c = 1$  in the remainder of this section, whereas for a *known*  $k_c$  the correspondences  $\gtrsim$  or  $\lesssim$  should be replaced by “ $\approx$ ”.

After conversion to magnitudes, the false alarm conditions of Eqs. (5) and (6) are given by

$$\Delta m_c \gtrsim -2.5 \log \left( 10^{-0.4m_{\text{diff}}} - k^{-1} (\Delta F/F)_s \right) - m_{\text{diff}} \quad (7)$$

where  $\Delta m_c$  corresponds to the magnitude variation of the contaminating star and  $m_{\text{diff}}$  is the difference of (target – contaminant) magnitudes. For a full expression of Eq. (7) in magnitudes, we may replace  $(\Delta F/F)_s$  by  $0.921 \Delta m_s$ , with  $\Delta m_s$  being the magnitude variation reported by the discovery instrument.

The above relations show that testing of even very weak transit candidates using ground-based instruments is possible. As an example (based on LRC02\_E1\_0483 in Table 4), consider a discovery signal with  $(\Delta F/F)_s = 1/1000$  or  $\Delta m_c \approx 1$  mmag and a contaminating star with  $k_c = 0.5$  that is 5 mag fainter than the target, respectively  $F_t/F_c = 100$ . If the eclipse signal originates in the contaminating star and following Eq. (5), its brightness variation would have to be  $\Delta F_c/F_c = 0.2$ , which is typically easily verifiable from the ground. On the other hand, if the signal is arising from the target, its 1 mmag signal could be detected by ground-based photometry only unreliably; however, the absence of a strong signal in any contaminating star would allow the deduction that the target is the source.

The need for a positive argument in the logarithmic term in Eq. (7) corresponds to the obvious fact that any contaminating star needs to generate a flux in the aperture that at least corresponds to the observed flux variation; e.g. that  $F_c k_c \geq \Delta F_s/g$ , or, in magnitudes, that a contaminating star needs to fulfill

$$m_{\text{diff}} \leq -2.5 \log \left( (\Delta F/F)_s k^{-1} \right). \quad (8)$$

A contaminating star with the minimum brightness would, however, need to turn its flux completely on and off<sup>3</sup> in order to generate the observed  $(\Delta F/F)_s$ . If we assume  $\Delta F_c/F_c = 0.60$  or  $\Delta m_c \approx 1.0$  to be the largest brightness variation<sup>4</sup> that may give rise to a transit-like event, then a star has to fulfill the condition

$$m_{\text{diff}} \leq -2.5 \log \left( (\Delta F/F)_s k^{-1} \right) - 0.55 \quad (9)$$

<sup>3</sup> Equation (8) is also identical to setting  $\Delta F_c = F_c$  in Eq. (5), which is the maximum possible brightness variation of a contamination source, and converting to magnitudes

<sup>4</sup> This value is based on the deepest eclipses found among 50099 EBs in the All Sky Automated Survey catalogue (Paczynski et al. 2006).

in order to be a potential contaminating source. This equation shows, for example, that a fully confused star with  $k_c = 1$  may not be more than 4.45 mag fainter than the target in order to explain an observed variation of  $(\Delta F/F)_s = 1/100$ .

An optimised observing strategy should therefore first check if the neighborhood of a target contains any *potential false alarms*; that is, perform a search for contaminating stars that fulfill Eq. (9). Only if such stars are found, is there any need to determine their brightness variations in order to test the false alarm condition with Eqs. (5) to (7).

### 3.3. “On-off photometry” for transit follow-up

For the required identification of the contaminants’ variability it is sufficient to compare their brightness during the central “on” part of a predicted transit against the off-transit one, without a need to observe full transit events. Such “on – off photometry” greatly reduces the observing time over that needed for the coverage of full transit events. Furthermore, “on” and “off” observations can – and should – be acquired at different nights, preferably with similar airmasses, allowing a more reliable identification of stellar variabilities in the case of transit events with long in- or egress durations, which else might be mistaken for extinction effects. We note that the continuous CoRoT lightcurve tells us if a target is stable from night to night or not, allowing to assess the reliability of on and off-observations taken on different nights.

For the CoRoT follow-up, we obtain short timeseries lasting from several minutes to about one hour for both the “on” and the “off” observations. Timeseries are preferable over single images for two reasons: for one, the brightness of CoRoT targets allows only exposure times up to  $\approx 1$  min with the telescopes employed, and second, the scatter of the time-series points allows the estimation of measurement errors.

The extraction of stellar brightnesses in “on-off photometry” can in principle be done with any stellar photometry code. Here we employ mostly the PSF – deconvolution code *decphot* (Gillon et al. 2007) – best for cases where very close contaminants are apparent – and the optimised aperture photometry package *vaphot* (Deeg & Doyle 2001) for contaminants with PSF’s that are separated in the ground-based images. For the latter one, the analyser program *vanaliz.pro* has been developed, which is described in the next section.

### 3.4. “Vaphot/vanaliz”, a timeseries photometry package with an analysis of on-off photometry

*Vanaliz* is a universal program for the analysis of timeseries of a limited number of stars, geared towards the extraction of target lightcurves of eclipsing or transiting systems. Tables with stellar photometry, obtained from the associated IRAF routine are read as input, though adaptation to other formats would be straightforward. *Vanaliz* performs differential photometry against user-selectable sets of comparison stars, and contains routines for the interactive evaluation and weighting of comparison stars, for the output of statistical analyses and for manual or automatic suppression of data-points. While these routines have already been used in several projects for differential photometry (e.g. Deeg et al. 2000; Martín et al. 2001; Zapatero Osorio et al. 2004; Steinfadt et al. 2008; Deeg et al. 2008; Rabus et al. 2009), a module that derives observed on-off brightness differences has been added for the CoRoT follow-up. Furthermore, it includes a calculation of the contamination factors  $k_c$  from a simulated CoRoT

**Table 1.** Instruments used for CoRoT photometric follow-up.

Instrument	Observatory
BEST 0.2-m <sup>a</sup>	Observatoire de Haute Provence, France
BESTII 0.25-m <sup>a</sup>	Cerro Armazones, Chile
TEST 0.3-m	Thüringer Landessternwarte, Germany
Vienna 0.8-m	Vienna Observatory, Austria
IAC 80-cm	Observatorio del Teide, Canary Islands, Spain
WISE 0.46-m, 1-m	WISE Observatory, Israel
OHP 1.2-m	Observatoire de Haute Provence, France
Euler 1.2-m telescope	La Silla, Chile
Tautenburg 2-m	Thüringer Landessternwarte, Germany
CFHT/Megacam 3.6-m	Mauna Kea, Hawaii

<sup>a</sup> The small BEST and BEST II telescopes are not used in the follow-up as described here. They obtained previous timeseries of CoRoT’s sample fields (Kabath et al. 2007; Karoff et al. 2007; Kabath et al. 2008, 2009b; Kabath et al. 2009a; Rauer et al. 2009) which are routinely checked against the detections from CoRoT. They will also be used for future surveying of CoRoT-short run fields.

PSF, leading to estimations of the expected on-off brightness-variations of all contaminating stars. Comparing the observed with the expected on-off variations allows then the identification of false alarm sources; see Fig. 4 for an example<sup>5</sup>.

## 4. The CoRoT photometric follow-up

### 4.1. The CoRoT photometric follow-up team

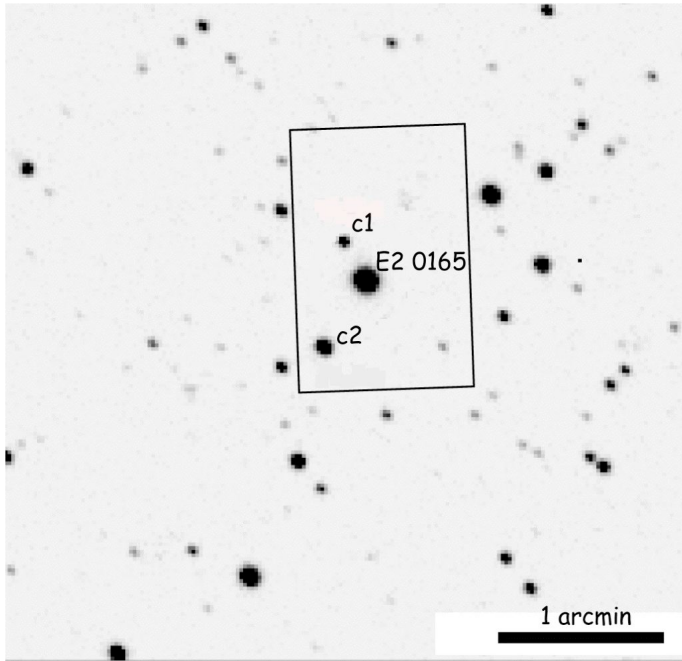
Previous to CoRoT’s launch we expected about 50–100 transit candidates per CoRoT observing run which will require further follow-up observations (Bordé et al. 2003; Garrido & Deeg 2006). The expected need of observing and manpower resources led to the early planning of a dedicated photometric follow-up effort. Table 1 shows the instruments that have been used for the follow-up to date. They are mostly 1m-class instruments, which have proven sufficient for the large majority of follow-up observations. Observations with high angular resolution, eventually needed to identify contaminants very close to the target, have to date not been part of the regular follow-up program; they have been performed in only one case, towards the discovery of CoRoT-7 b, and are described in Léger, Rouan, Schneider, et al. (2009).

### 4.2. Observing strategy

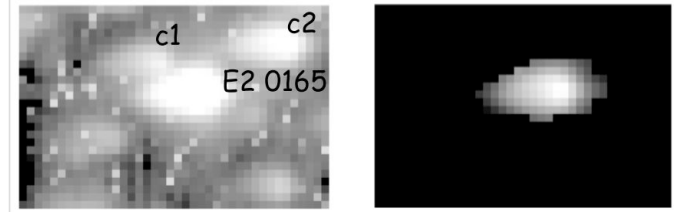
Planet candidates that enter the follow-up program are the outcome of the application of several different detection algorithms and the passing of a series of tests to classify the results (Moutou et al. 2005, 2007; Almenara et al. 2007; Barge et al., in prep.), which leads either to their rejection as false alarms or to their classification into one of several priority classes for planet candidates, according to their likeliness to be real planets. Observational follow-up is then only performed on sufficiently highly classified candidates.

For the photometric follow-up of a candidate, we initially check for the existence of contaminating stars using the stellar photometry in the Exo-Dat catalog (Deleuil et al. 2009). A simulation of the CoRoT PSF allows then an estimation of the fraction of light from the target and from the contaminating stars that

<sup>5</sup> A public version of this program without the simulation of the CoRoT PSF, using default values of  $k_c = 1$ , is available as the “vaphot/vanaliz” package at <http://www.iac.es/galeria/hdeeg/hdeeghome.html>



**Fig. 2.** Finderchart of the area around target E2\_0165 made from an INT/WFC r-band image. N is to the top and E to the left. The rectangle shows the region of the “imageette” of Fig. 3.



**Fig. 3.** Imageette from Corot’s CCD, centered on E2\_0165; orientation is N to the left, E to top. The right image shows the target through the aperture mask used for on-board photometry.

#### 4.3. An example of follow-up photometry: the exclusion of contaminants near the CoRoT-7 host star

As an example of the methodology of the CoRoT photometric follow-up, we show here in more detail the sequence that led to the exclusion of contaminants near the target star around which the terrestrial planet CoRoT-7b has been detected. A summary of this section has been included in Léger, Rouan, Schneider, et al. (2009), in which also all the other follow-up observations towards this discovery are being described.

In a first step, once a new candidate is included in the follow-up program, a finderchart (Fig. 2) is generated, based on Sloan-r filter images that had been obtained on the 2.5 m INT/WFC instrument as part of the mission preparation. The Exo-Dat database which contains photometry extracted from the same images, also includes an estimation of the contamination level of a given target based on catalogued nearby stars and employing a generic CoRoT PSF. For CoRoT-7, which corresponds to Corot-ID 102708694 or target number LRa01\_E2\_0165, Exo-Dat indicates a low contamination level of 0.00053; meaning that about 0.05% of the light detected from that target may come from contaminating stars.

Follow-up observations were initially performed with the IAC80 telescope; a 40 min long timeseries with a cadence of 40 s was taken in *R* filter during a transit on 27 Feb. 2008, and similar off-transit observations were obtained on 5 Mar. and 14 Apr. 2008. A model of CoRoT’s PSF of target E2\_0165 was then obtained from an extraction of its stellar image from a CoRoT – “imageette” (Fig. 3), a small subsection of an image from the CoRoT CCD around the target. Considering the shape of CoRoT’s target mask (right panel of Fig. 3) and using stellar brightnesses from an off-transit image taken at IAC80, this allowed a more precise calculation of the brightness variations that would be expected from any CEB. Based on this, two “critical” nearby stars, *c1* of  $R = 15.3$  and *c2* of  $R = 13.5$  mag, were identified as potential false alarm sources, requiring eclipses with alarm amplitudes of 0.17 and 0.76 mag respectively (Table 2). We must emphasize that all other nearby stars, not listed in Table 2, were also tested to determine if they could be potential false alarm sources, but they could be excluded because they did not fulfill Eq. (8), requiring impossibly large brightness variations.

*vaphot* was used to extract differential photometry and *vanaliz* was used to calculate the differences between on- and off-transit fluxes,  $\Delta \text{mag}_{\text{on-off}}$ , for the target and the stars *c1* and *c2*. This analysis (Fig. 4) showed that their on-off differences remained significantly below the required signal for a false-alarm (Table 2). It should be noted that an on-off difference of about 0.02 mag was found for the target; this is however much larger than the amplitude from CoRoT data and cannot be taken as a verification of the target as the alarm-source; it is most likely

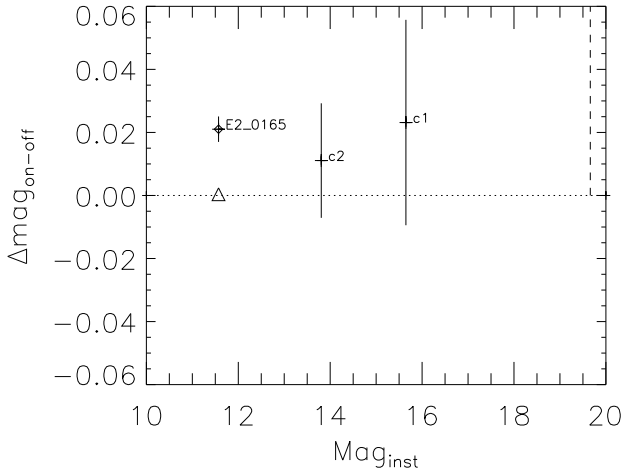
falls into the target’s aperture, giving the factors  $k_c$ . The evaluation based on Exo-Dat may be complemented by off-transit images from target fields taken with any of the telescopes participating in the follow-up effort. In cases where close blends are suspected, high-resolution imaging from adaptive optics or speckle imaging may also be obtained to aid in the identification of contaminants. Around the majority of candidates, these evaluations identify contaminating stars that are potential false alarms and which consequently require time-series follow-up photometry to derive their variability. Obtaining and analysing these time-series, part of which needs to be taken during candidates’ transits, constitutes the major effort of the follow-up program.

For the assigning of observations and for the tracking of their results, we developed a web-based tool, the “transit predictor”. It allows participating observers to obtain a list of the candidates that undergo transits at any night at their observatory, indicating their priority, transit start and end-times and corresponding target altitudes, moon-distances and solar altitudes, as well as general target information (position, brightness, transit depth). Since the number of transit candidates is fairly large, candidate transits that are in need of observation can be found for almost every night. This tool thus allows the optimum use of observing time when it is available only in nightly blocks within regular semestral scheduling; at most instruments this is still the only mode in which significant amounts of observing time can be obtained. Only for transit-events of long-periodic cases with few observing opportunities, or for high priority objects (which may also need a specific instrument) do we intend to obtain observing time on short notice at specified moments. Since several groups are participating, a central coordination keeps track of the status of observations, reductions and their results, and accordingly prioritises the candidates, aiming to resolve the highest priorities rapidly while avoiding duplicate observations.

**Table 2.** Potential false alarm sources around the E2\_0165 target star.

Name	$\Delta$ RA arcsec	$\Delta$ Dec. arcsec	$m_R$	$k$	relat. contrib. to target flux	Observed $\Delta m_c$	Alarm $\Delta m_c$
E2_0165	0	0	11.26	1.00	0.997	$0.021 \pm 0.004$	0.00038
c1	8.3	15.3	15.33	0.10	0.0024	$0.023 \pm 0.033$	0.17
c2	16.3	-26.3	13.50	0.005	0.00069	$0.011 \pm 0.018$	0.76
c3	2.4	10.5	20 <sup>1</sup>	0.87	0.00048	$<0.5^2$	1.0

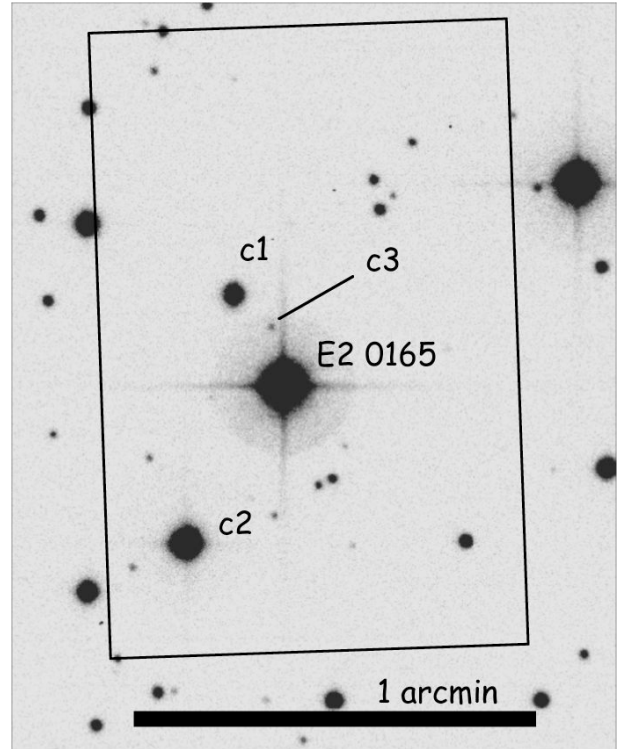
<sup>1</sup> g-band magnitude. <sup>2</sup> Estimated from movie made from CFHT time-series images.



**Fig. 4.** Difference between on and off-transit magnitudes for the target E2\_0165 and the two stars c1 and c2 that were potential false alarm sources near E2\_0165, based on the observations taken with the IAC80. In both cases the observed differences are much lower than required to be false alarm sources (see Table 2) and are compatible with no variation. The large observed offset for the E2\_0165 target of 0.02 mag arises most likely from stellar activity and measurement errors; see text. The triangle indicates its expected brightness variation of 0.4mmag – too low to be resolved in this plot – and the vertical dashed line indicates the approximate faint limit for false alarm sources, derived from Eq. (9). Magnitudes are on an instrumental scale, 0.31 mag larger than the  $m_R$  values of Table 2.

due to a combination of stellar activity, which causes brightness variations on the percent level over spans of several days (Léger, Rouan, Schneider, et al. 2009) and of measurement errors. Star c2 was furthermore identified as a separate CoRoT target (E2\_2180) with a lightcurve excluding any relevant brightness variations.

Further time-series images were taken using CFHT/ MEGACAM (Boulade et al. 2003) during a transit-ingress on 7 March 2008. One exposure of 10 s in the g-band was taken about each minute during 100 min. Only one CCD among the 40 chips of MEGACAM was actually used for that, which was sufficient, given a local star density that offered a wealth of nearby reference stars within the proper magnitude range. The image quality was medium for Mauna Kea (seeing  $\approx 0.9$  to  $1.3$  arcsec) but good enough for our purposes. These images, much deeper than those from IAC80, showed several additional faint nearby stars (Fig. 5); however, only the star c3 of  $\approx 20$  mag and  $10''$  NNE of the target was marginally admissible as a potential false alarm source, requiring unusually deep eclipses with amplitudes  $\geq 1$  mag. This star was visually inspected by generating a movie from the time-series images, indicating no apparent brightness variation. The contaminants c1 and c2 as well as all further



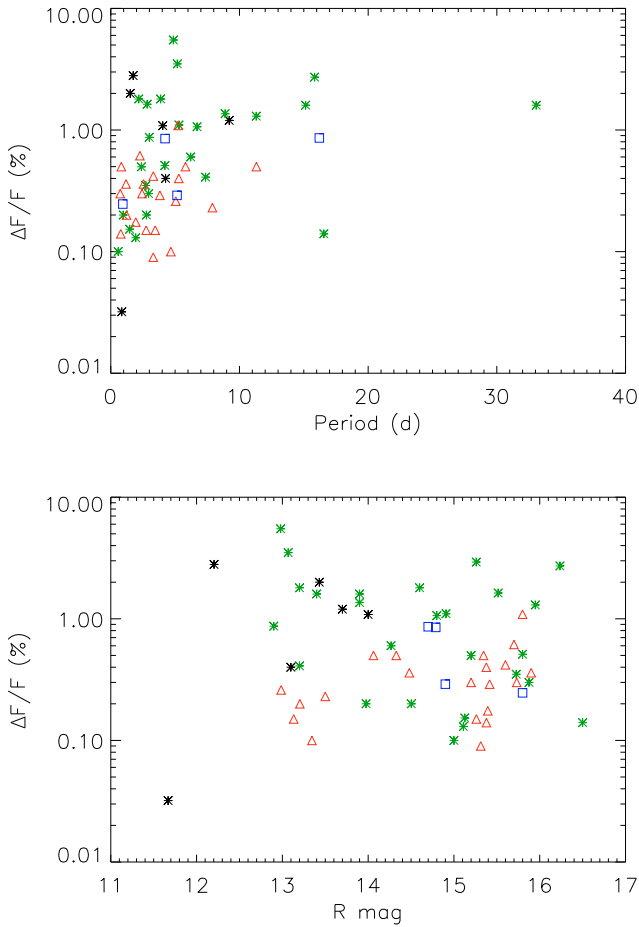
**Fig. 5.** Image of E2\_0165 field taken with CFHT/Megacam, showing also faint contaminant c3. N is to the top and E to the left and the rectangle corresponds again to Fig. 3.

nearby stars – though not critical – were also demonstrated by the CFHT time-series to exhibit no significant brightness variations.

In conclusion, all stars around E2\_0165 could be excluded as false alarm sources. The remaining possibility were very close CEBs that may have become diluted in the PSF of the target on the CFHT images. A further search (described in more detail in Léger, Rouan, Schneider, et al. 2009) for the presence of yet-unseen very close companions brighter than  $\approx 20$  mag (or  $m_{\text{diff}} < 8.5$ , from Eq. (8), where  $k \approx 1$  due to the closeness to the target) was then initiated using several high-resolution imaging techniques. That gave a negative result; indicating that false alarm sources can be excluded at all distances larger than about 1 arcsec.

#### 4.4. Results from the photometric follow-up

A detailed reporting of the general characteristics of the non-planetary CoRoT candidates will be the subject of a paper forthcoming at the end of the mission. First general results on the types of false alarm sources are given in Almenara et al. (2009),



**Fig. 6.** CoRoT planet candidates that were surveyed by the photometric follow-up, showing the candidate transit depth versus period (*upper panel*) and target magnitude (*lower panel*). Systems found by the photometric follow-up to be on-target are indicated by star-symbols, where the six published planets CoRoT-1b to 5b and 7b are differentiated by the black color (CoRoT-1b to 4b have previously been published under the name CoRoT-1b to 4b). CEBS that were detected by the follow-up are indicated by red triangles, whereas blue squares indicate cases where no clear result could be obtained.

whereas detailed descriptions of the candidates of the first long runs are being published by Moutou et al. (2009) for the IRa01; by Cabrera et al. (2009) for the LRc01 and by Carone et al. (in prep.) for the LRA01; with publications on later runs planned once a run’s follow-up operations are reasonably complete. Here we limit ourselves to give an overview of the results from the photometric follow-up of the candidates that have been analysed through March 2009. Figure 6 shows the sample of the surveyed cases against their period and magnitude. We note that the distribution of the surveyed candidates in these diagrams does not differ significantly from the distributions of the entire sample of planet candidates that have been selected for follow-up (Barge et al., in prep.). An overall fraction of about 40% of the candidates with pending photometric follow-up has been observed, with a higher rate of 80% for the first CoRoT pointings (IRa01, LRc01); the remaining candidates are still pending observation. Of the 57 candidates that have been surveyed by the CoRoT photometric follow-up team, 32 were found to be on-target, and 21 – or about 35% – were background variables. 4 additional cases could not be resolved, either due to serious doubts

about the candidate’s ephemeris (from which it became doubtful that on-transit observations were done at the correct moment) or due to ambiguities in the photometry. Only one system (CoRoT-7) with a brightness variation significantly below 0.1% has been surveyed; this is due to the sparseness of such planet candidates from CoRoT’s lightcurves. Table 3 gives an overview about the candidates whose brightness variation was found to be on-target. Its leftmost five columns give basic information about the candidates from CoRoT’s measurements. Next, the method is indicated by which the “on-target” status was determined by photometric follow-up: TV (target variation) – a brightness-variation of correct amplitude was found on the target-star itself; CVA (contaminant variations absent) – the absence of any sufficiently strong variation in any contaminating star has been verified; NC (no contaminant) – no contaminating star was found that could be a potential false alarm source. For cases with observed target variations (TV), the next column indicates the observed target amplitude  $(\Delta F/F)_t$ . On the other hand, for cases without contaminant variations (CVA),  $m_c$ , the contaminant brightness,  $m_{\text{diff}}$ , its brightness difference to the target, and  $\Delta m_c$ , the contaminant’s brightness variation that is required to indicate an alarm is given. If more than one contaminant was present around a target, we indicate the values for the contaminant with the smallest required alarm-amplitude  $\Delta m_c$ . The observed precision of contaminant brightness-variations can generally be taken to be 3% or better; hence most cases identified in Table 3 are reliable identifications; those cases were only identifications of low reliability could be obtained are indicated by comments in the table. For the cases that were identified by a direct observation of target brightness variations (TV), we note that the observed brightness variation  $(\Delta F/F)_t$  is typically larger than the one found by CoRoT,  $(\Delta F/F)_s$ , something that can be expected due to CoRoT’s dilution of the candidate signal in its PSF by the contaminants that are present. Since the photometric follow-up is only an intermediate step in the chain to verify planet candidates, all candidates listed in Table 3 are subject to further observations. This is typically done through radial velocity measurements, and we indicate only the identified planets. For the first CoRoT runs, the outcome of these observations is described in the aforementioned papers on individual runs; whereas for the later runs, the final outcome is in many cases still open.

Table 4 indicates the candidates that photometry discarded by identifying CEBS near the CoRoT targets. The contamination fractions  $k$  were calculated from the observed contaminant eclipse amplitude and  $m_{\text{diff}}$ . We note that all detected background variables appeared on CoRoT-candidates with brightness variations of  $(\Delta F/F)_s \lesssim 1\%$  (Fig. 6). This is likely due to a more reliable classification of the brighter candidates that enter the follow-up program, for which cases with CEBS have been rejected with more reliability from the discovery lightcurves. Contaminating EBs can in general be found within a distance of  $\approx 17$  arcsec; their distance and direction is shown in Fig. 7. Due to the changing orientation of the CoRoT cameras, this distance is plotted in the coordinates of the CCD’s  $X$  and  $y$  axes, in which the dispersion direction of CoRoT’s PSF remains constant. As expected, the distribution of detected CEBS outlines the generic PSF shape, with the more distant cases arising from bright or deeply eclipsing CEBS.

Figure 8 shows the brightness of the identified CEBS and the magnitude differences between contaminant and target, plotted against the discovery eclipse amplitude  $(\Delta F/F)_s$  in both cases. While the bulk of the CEBS are fainter than the target by 1–3.5 mag, several bright CEBS whose signal leaks into the CoRoT photometric apertures have also been identified, all of



**Table 3.** Photometric on-target identifications of CoRoT detections.

COROT_ID	RUN-ID	Candidate			Observation	Observed			Alarm	Observatory	Comment
		$(\Delta F/F)_s$ (%)	period	$m_t$	method	$(\Delta F/F)_t$ (%)	$m_c$	$m_{diff}$	$\Delta m_c$		
102912369	IRa01_E1_0330	1.2	9.2	13.7	TV	1.3				WISE, Euler, CFHT	Corot-4b
102829121	IRa01_E1_0399	1.6	33.06	13.9	TV	1.6				WISE	
102779966	IRa01_E1_4108	0.41	7.37	15.4	CVA		19.3	3.9	0.25	CFHT	
102825481	IRa01_E2_0203	3	5.17	13.3	TV	3.5				IAC, CFHT	
102890318	IRa01_E2_1126	2	1.51	13.6	TV	2				WISE, CFHT, BEST <sup>1</sup>	Corot-1b
102826302	IRa01_E2_1712	0.2	2.77	14.0	CVA		18.2	4.2	0.28	WISE, CFHT	
102954464	IRa01_E2_3856	0.14	16.56	16.5	TV	1.6				Euler	
102764809	LRa01_E1_1031	1.09	4.04	14.0	CVA		17.3	3.3	0.5	Vienna, IAC	Corot-5b
102708694	LRa01_E2_0165	0.03	0.85	11.3	CVA		15.3	4.1	0.17	CFHT, IAC	Corot-7b <sup>2</sup>
102615551	LRa01_E2_1123	1.8	3.88	14.6	TV	1.7				IAC, WISE	
102716818	LRa01_E2_3156	0.15	1.47	15.8	NC					IAC	
102671819	LRa01_E2_3459	1.63	2.83	15.5	NC					IAC	
102755764	LRa01_E2_3739	2.93	61.48	15.6	TV	2.5				Euler	=IRa01_E1_4014
102725122	LRa01_E2_5277	0.35	2.72	16.1	NC					IAC	
102582529	LRa01_E2_5756	2.72	15.84	16.2	TV	3				IAC	
101065348	LRc01_E1_0499	5.5	4.86	13.3	TV	6				IAC	
101368192	LRc01_E1_0523	0.4	4.26	13.3	TV	0.5				IAC	Corot-3b
101206989	LRc01_E1_1929	0.1	0.58	15.0	CVA		20.0	5	0.11	IAC	Low significance <sup>3</sup>
101055792	LRc01_E1_2140	0.13	1.94	15.1	CVA		17.2	2.1	0.02	IAC	
101644400	LRc01_E1_3268	1.1	5.3	15.3	NC					IAC, Vienna	
101206560	LRc01_E2_0192	2.8	1.74	12.6	TV	2.9				WISE, IAC, TLS, BEST <sup>4</sup>	Corot-2b
101086161	LRc01_E2_1145	0.6	6.21	14.8	TV	0.7				OHP	
100768215	LRc01_E2_4390	0.3	2.94	16.5	CVA		20.4	3.9	0.12	CFHT, IAC	
100834293	LRc01_E2_5414	1.3	11.3	16.4	CVA		18.4	2	0.14	IAC	
105833549	LRc02_E1_0202	0.87	2.99	12.9	TV	1.2				Euler	
106017681	LRc02_E1_0632	1.36	8.89	13.9	TV	1.4				Euler, WISE	
105859159	LRc02_E1_0801	0.2	0.97	14.5	TV,CVA	0.5	17.7	3.2	0.04	TTB	Low significance <sup>5</sup>
105416004	LRc02_E1_1427	0.5	2.38	15.2	TV	0.5				Euler	TV 1.5 h early <sup>6</sup>
105874733	LRc02_E2_1207	1.06	6.71	14.8	TV	1.2				TLS	
105209106	LRc02_E2_4747	0.51	4.21	15.8	TV <sup>7</sup> , CVA	0.8	16.7	0.9	0.11	Euler, IAC	
221656539	SRa02_E2_0486	1.6	15.14	13.4	CVA		13.6	0.2	0.45	WISE	
221613770	SRa02_E2_0749	1.8	2.18	13.2	TV	1.8				WISE	

<sup>1</sup> Archival detection in pre-launch obs from 9 Dec. 2006; <sup>2</sup> See also Table 2; <sup>3</sup> On-target classification on 2-sigma level; <sup>4</sup> Several archival detections in pre-launch obs from summer 2005; <sup>5</sup> Low-confidence result (TV detection marginal and only 4% variations in contaminant needed); <sup>6</sup> TV was detected 1.5 h earlier than predicted from CoRoT requiring an ephemeris error on a 2-sigma level; <sup>7</sup> TV not detected by IAC and unreliably by Euler, corroborated with CVA.

them being cases where the contaminant was relatively far away from the target with only a very small fraction of its light falling into the target aperture. To date, no CEB fainter than 19 mag, or 5 mag fainter than the target has been identified; limits that will certainly become extended when more low-amplitude candidates become available, with subsequent stronger instrumental demands on the follow-up photometry. With more cases of CoRoT candidates being resolved by photometric follow-up, it may also be expected that differences in stellar densities between the center and anticenter pointings reveal different fractions of candidates turning out to be CEBs, due to the different stellar densities in these fields, with more CEB's expected in the denser pointings towards the galactic center.

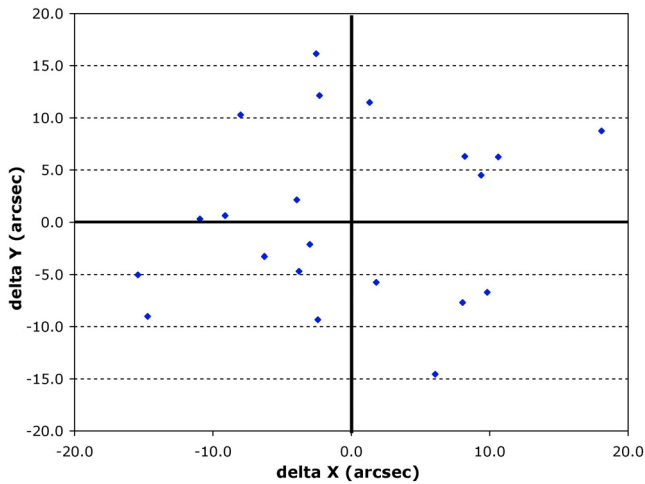
## 5. Conclusion

The ongoing follow-up program of CoRoT detections demonstrates that ground-based photometric follow-up is an important step in the cadence that leads from the detection in the space mission's data to the announcement of a planet discovery. An

efficient observational method is the observation of short sections during predicted on and off-transit phases. The ground-based follow-up of CoRoT has found that approximately a third of CoRoT's transit candidates are caused by contaminating background binary stars at target distances of 2–15". Ground-based follow-up is able to detect or reject contaminating eclipsing binaries even in very low amplitude cases, in which the transit-like signals detected by the space mission are impossible to reproduce from ground. This is due to the much higher angular resolution obtainable from the ground in comparison to CoRoT, even with modest ground-based instrumentation. This ability of ground-based photometry is especially important in cases of suspected low-mass planets, where a positive verification with radial-velocity measurements is impossible or very difficult. Radial velocity observations are neither able to detect contaminating eclipsing binaries when these are sufficiently distant from the target star to remain outside of a spectrograph's entry slit – a domain where photometric follow-up excels. The two follow-up techniques therefore complement each other very well in the identification of false alarm sources. With the push by

**Table 4.** Contaminating eclipsing binary (CEB) identifications around CoRoT targets.

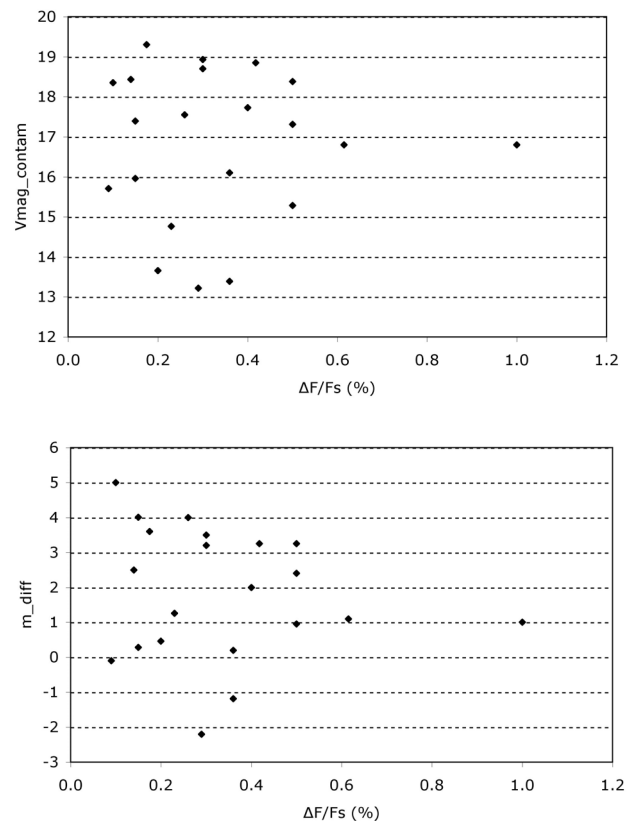
COROT-ID	RUN-ID	Candidate					Contaminator			Observatory
		$(\Delta F/F)_s$ (%)	period	$m_i$	$m_c$	$m_{\text{diff}}$	$(\Delta F/F)_c$ (%)	distance (arcsec)	$k$	
102787048	IRa01_E1_0288	0.23	7.90	13.50	14.76	1.26	3.0	9.1	0.24	OHP
102809071	IRa01_E2_1136	0.2	1.22	13.20	13.66	0.46	8.0	12.4	0.038	Euler, Wise
102798247	IRa01_E2_1857	0.5	0.82	14.06	17.31	3.25	11.5	3.7	0.87	Euler
102805893	IRa01_E2_2604	0.29	3.82	15.42	13.22	-2.2	2.5	16.3	0.015	Euler
102835817	IRa01_E2_3425	0.36	1.19	15.9	16.1	0.20	26	13.0	0.017	Euler
102802430	IRa01_E2_4300	0.5	5.81	14.33	15.28	0.95	51	10.4	0.024	CHFT
102714746	LRa01_E1_0544	0.15	2.75	13.39	17.40	4.0	20	9.6	0.30	Euler, IAC
102618931	LRa01_E1_2890	0.3	2.43	15.73	18.93	3.2	40	12.3	0.14	IAC
102692038	LRa01_E1_4353	1.0	5.23	15.80	16.80	1.0	4.5	11.1	0.56	Euler, IAC
102590008	LRa01_E2_4129	0.175	1.94	15.71	19.31	3.6	7.0	4.5	0.69	WISE, Euler
101095286	LRc01_E1_2376	0.26	5.05	13.55	17.55	4.0	10.5	6.0	0.99	WISE, IAC
101436549	LRc01_E1_3129	0.3	0.73	15.20	18.70	3.5	47.5	11.9	0.16	IAC
101175376	LRc01_E1_4959	0.4	5.29	15.73	17.73	2.0	42.5	20.1	0.059	IAC
101106246	LRc01_E2_3257	0.5	11.32	15.98	18.38	2.4	8.0	10.9	0.57	Euler, IAC
110604224	LRc01_E2_3681	0.15	3.45	15.68	15.96	0.28	15.0	11.5	0.013	Euler, IAC
100609705	LRc01_E2_3895	0.09	3.30	15.81	15.71	-0.1	16.8	15.8	0.005	Euler, IAC
100589010	LRc01_E2_4006	0.14	0.78	15.93	18.43	2.5	35	16.2	0.040	WISE
211666030	SRc01_E1_3835	0.62	2.26	15.70	16.80	1.1	5.0	10.3	0.34	IAC
110830906	LRa02_E2_2689	0.36	2.55	14.84	13.39	-1.18	28	17.3	0.004	BEST II
105681575	LRc02_E1_0483	0.1	4.67	13.35	18.35	5.0	17.0	7.1	0.59	WISE
105574879	LRc02_E2_3142	0.42	3.31	15.60	18.85	3.25	15.3	6.0	0.56	Euler, IAC



**Fig. 7.** Distances of detected CEB from their target stars, set at position (0, 0). Distances are given in arcsec along the CoRoT CCD's X – Y axes. For the pointings towards the galactic center, these axes correspond approximately (ignoring small roll-angles of the satellite) to: N to the right, E downwards; for the anticenter pointings they are: N to the left, E upwards.

CoRoT, *Kepler* and further planned missions towards the detection of smaller planets, and implicitly, lower mass planets, the independent positive verification of planet detections will become increasingly difficult. Planet discoveries from transits will therefore increasingly become based on the rejection of all possible false-alarm sources. This is a game where ground-based photometry has shown its value, as is demonstrated by its rôle in the recent discovery of CoRoT-7b.

**Acknowledgements.** The Austrian team thanks ASA for funding the CoRoT project. The team at IAC acknowledges support by grants ESP2004-03855-C03-03 and ESP2007-65480-C02-02 of the Spanish Ministerio de Ciencia e Innovación. The team at TLS acknowledges the support of DLR grants 50 OW 0204 and Deutsche Forschungsgemeinschaft Grant Ei 409/14-1. Tsevi Mazeh acknowledges support from the Israeli Science Foundation, through grant



**Fig. 8.** *Top panel:* brightness of identified contaminating EBs versus the amplitude of eclipses in the discovery signal from CoRoT,  $(\Delta F/F)_s$ . *Bottom panel:* magnitude difference (contaminant – target) versus  $(\Delta F/F)_s$ .

No. 655/07. Some of the data published in this article were acquired with the IAC80 telescope operated by the Instituto de Astrofísica de Canarias in the Observatorio del Teide and special thanks is given to its staff for performing a large fraction of these observations. This research has made use of the

Exo-Dat database, operated at LAM-OAMP, Marseilles, France, on behalf of the CoRoT/Exoplanet program, and whose input catalogue was made possible thanks to observations collected for years at the Isaac Newton Telescope (INT), operated on the island of La Palma by the Isaac Newton group in the Spanish Observatorio del Roque de Los Muchachos of the Instituto de Astrofísica de Canarias. This research has made use of the Exo-Dat database, operated at LAM-OAMP, Marseille, France, on behalf of the CoRoT/Exoplanet program. We thank the referee for his comments that improved the presentation of this paper.

## References

- Almenara, J. M., Deeg, H. J., Aigrain, S., et al. 2009, *A&A*, 506, 337
- Almenara, J. M., Deeg, H. J., Régulo, C., & Alonso, R. 2007, in *Transiting Extrapolar Planets Workshop*, ed. C. Afonso, D. Wel Drake, & T. Henning, ASP Conf. Ser., 366, 183
- Alonso, R., Deeg, H. J., Brown, T. M., & Belmonte, J. A. 2004, *Astron. Nachr.*, 325, 594
- Bordé, P., Rouan, D., & Léger, A. 2003, *A&A*, 405, 1137
- Boulade, O., Charlot, X., Abbon, P., et al. 2003, in *SPIE Conf. Ser.*, 4841, ed. M. Iye, & A. F. M. Moorwood, 72
- Brown, T. M. 2003, *ApJ*, 593, L125
- Cabrera, J., Fridlund, M., Ollivier, M., et al. 2009, *A&A*, 506, 501
- Deeg, H. J. & Doyle, L. R. 2001, in *Third Workshop on Photometry*, ed. W. J. Borucki, & L. E. Lasher, 85
- Deeg, H. J., Doyle, L. R., Kozhevnikov, V. P., et al. 2000, *A&A*, 358, L5
- Deeg, H. J., Ocaña, B., Kozhevnikov, V. P., et al. 2008, *A&A*, 480, 563
- Deleuil, M., Meunier, J., Moutou, C., et al. 2009, *AJ*, 138, 649
- Deleuil, M., Moutou, C., Deeg, H., et al. 2006, in *ESA SP*, 1306, 341
- Eislöffel, J., Kürster, M., Hatzes, A. P., & Guenther, E. 2004, in *ESA Special Publication, Stellar Structure and Habitable Planet Finding*, ed. F. Favata, S. Aigrain, & A. Wilson, 538, 81
- Garrido, R., & Deeg, H. J. 2006, *Lecture Notes and Essays in Astrophysics*, 2, 27
- Gillon, M., Magain, P., Chantry, V., et al. 2007, in *Transiting Extrapolar Planets Workshop*, ed. C. Afonso, D. Wel Drake, & T. Henning, ASP Conf. Ser., 366, 113
- Kabath, P., Eigmüller, P., Erikson, A., et al. 2007, *AJ*, 134, 1560
- Kabath, P., Eigmüller, P., Erikson, A., et al. 2008, *AJ*, 136, 654
- Kabath, P., Erikson, A., Rauer, H., et al. 2009a, *A&A*, 506, 569
- Kabath, P., Fruth, T., Rauer, H., et al. 2009b, *AJ*, 137, 3911
- Karoff, C., Rauer, H., Erikson, A., et al. 2007, *AJ*, 134, 766
- Léger, A., Rouan, D., Schneider, J., et al. 2009, *A&A*, 506, 287
- Martín, E. L., Zapatero Osorio, M. R., & Lehto, H. J. 2001, *ApJ*, 557, 822
- Moutou, C., Aigrain, S., Almenara, J., et al. 2007, in *Transiting Extrapolar Planets Workshop*, ed. C. Afonso, D. Wel Drake, & T. Henning, ASP Conf. Ser., 366, 127
- Moutou, C., Pont, F., Barge, P., et al. 2005, *A&A*, 437, 355
- Moutou, C., Pont, F., Bouchy, F., et al. 2009, *A&A*, 506, 321
- Paczyński, B., Szczygiel, D. M., Pilecki, B., & Pojmański, G. 2006, *MNRAS*, 368, 1311
- Rabus, M., Alonso, R., Belmonte, J. A., et al. 2009, *A&A*, 494, 391
- Rauer, H., Erikson, A., Kabath, P., Hedelt, P., Boer, M., & Carone, L. 2009, *AJ*, submitted
- Steinfadt, J. D. R., Bildsten, L., Ofek, E. O., & Kulkarni, S. R. 2008, *PASP*, 120, 1103
- Zapatero Osorio, M. R., Caballero, J., Martín, E. L., Béjar, V. J. S., & Rebolo, R. 2004, *Ap&SS*, 292, 673