



HAL
open science

HERschel Inventory of The Agents of Galaxy Evolution (HERITAGE): The Large Magellanic Cloud dust

M. Meixner, F. Galliano, S. Hony, J. Roman-Duval, T. Robitaille, P. Panuzzo,
M. Sauvage, K. Gordon, C. Engelbracht, K. Misselt, et al.

► **To cite this version:**

M. Meixner, F. Galliano, S. Hony, J. Roman-Duval, T. Robitaille, et al.. HERschel Inventory of The Agents of Galaxy Evolution (HERITAGE): The Large Magellanic Cloud dust. *Astronomy and Astrophysics - A&A*, 2010, 518, 10.1051/0004-6361/201014662 . hal-03646118

HAL Id: hal-03646118

<https://hal.science/hal-03646118v1>

Submitted on 3 Jun 2022

HAL is a multi-disciplinary open access archive for the deposit and dissemination of scientific research documents, whether they are published or not. The documents may come from teaching and research institutions in France or abroad, or from public or private research centers.

L'archive ouverte pluridisciplinaire **HAL**, est destinée au dépôt et à la diffusion de documents scientifiques de niveau recherche, publiés ou non, émanant des établissements d'enseignement et de recherche français ou étrangers, des laboratoires publics ou privés.

LETTER TO THE EDITOR

HERschel Inventory of The Agents of Galaxy Evolution (HERITAGE): The Large Magellanic Cloud dust*

M. Meixner^{1,2}, F. Galliano³, S. Hony³, J. Roman-Duval¹, T. Robitaille^{4,5}, P. Panuzzo³, M. Sauvage³, K. Gordon¹, C. Engelbracht⁶, K. Misselt⁶, K. Okumura³, T. Beck¹, J.-P. Bernard⁷, A. Bolatto⁸, C. Bot⁹, M. Boyer¹, S. Bracker¹⁰, L. R. Carlson¹¹, G. C. Clayton¹², C.-H. R. Chen¹³, E. Churchwell¹⁰, Y. Fukui¹⁴, M. Galametz³, J. L. Hora⁴, A. Hughes¹⁵, R. Indebetouw¹³, F. P. Israel¹⁶, A. Kawamura¹⁴, F. Kemper¹⁷, S. Kim¹⁸, E. Kwon¹⁸, B. Lawton¹, A. Li¹⁹, K. S. Long¹, M. Marengo²⁰, S. C. Madden³, M. Matsuura^{21,22}, J. M. Oliveira²³, T. Onishi²⁴, M. Otsuka¹, D. Paradis²⁵, A. Poglitsch²⁶, D. Riebel¹¹, W. T. Reach^{25,27}, M. Rubio²⁸, B. Sargent¹, M. Sewiło¹, J. D. Simon²⁹, R. Skibba⁶, L. J. Smith¹, S. Srinivasan³⁰, A. G. G. M. Tielens¹⁴, J. Th. van Loon²³, B. Whitney³¹, and P. M. Woods¹⁷

(Affiliations are available in the online edition)

Received 31 March 2010 / Accepted 14 April 2010

ABSTRACT

The *HERschel* Inventory of The Agents of Galaxy Evolution (HERITAGE) of the Magellanic Clouds will use dust emission to investigate the life cycle of matter in both the Large and Small Magellanic Clouds (LMC and SMC). Using the *Herschel* Space Observatory's PACS and SPIRE photometry cameras, we imaged a $2^\circ \times 8^\circ$ strip through the LMC, at a position angle of $\sim 22.5^\circ$ as part of the science demonstration phase of the *Herschel* mission. We present the data in all 5 *Herschel* bands: PACS 100 and $160 \mu\text{m}$ and SPIRE 250, 350 and $500 \mu\text{m}$. We present two dust models that both adequately fit the spectral energy distribution for the entire strip and both reveal that the SPIRE $500 \mu\text{m}$ emission is in excess of the models by ~ 6 to 17% . The SPIRE emission follows the distribution of the dust mass, which is derived from the model. The PAH-to-dust mass (f_{PAH}) image of the strip reveals a possible enhancement in the LMC bar in agreement with previous work. We compare the gas mass distribution derived from the HI 21 cm and CO $J = 1-0$ line emission maps to the dust mass map from the models and derive gas-to-dust mass ratios (GDRs). The dust model, which uses the standard graphite and silicate optical properties for Galactic dust, has a very low $\text{GDR} = 65_{-18}^{+15}$ making it an unrealistic dust model for the LMC. Our second dust model, which uses amorphous carbon instead of graphite, has a flatter emissivity index in the submillimeter and results in a $\text{GDR} = 287_{-42}^{+25}$ that is more consistent with a GDR inferred from extinction.

Key words. Magellanic Clouds – dust, extinction – submillimeter: galaxies – submillimeter: ISM

1. Introduction

The Large Magellanic Cloud (LMC) and the Small Magellanic Cloud (SMC) are the best astrophysical laboratories to study the lifecycle of the interstellar medium (ISM), because their proximity (50 kpc, e.g. Schaefer 2008; 61 kpc, Szewczyk et al. 2009) permits detailed studies of resolved ISM clouds and their relation to stellar populations on global scales, in an unambiguous manner, and as a controlled function of environment. Their sub-solar metallicities ($Z_{\text{LMC}} \simeq 0.5 \times Z_\odot$, $Z_{\text{SMC}} \simeq 0.2 \times Z_\odot$; Dufour et al. 1982; Bernard et al. 2006) permit investigations on how processes governing galaxy evolution depend on metallicity. The *Herschel* Observatory (Pilbratt et al. 2010) open-time key program, entitled *HERschel* Inventory of The Agents of Galaxy Evolution (HERITAGE) in the Magellanic Clouds, will perform a uniform survey of the LMC ($8^\circ \times 8.5^\circ$), SMC ($5^\circ \times 5^\circ$), and the Magellanic Bridge ($4^\circ \times 3^\circ$) with the Spectral and Photometric Imaging REceiver (SPIRE) at 250, 350, and $500 \mu\text{m}$ (Griffin et al. 2010) and with the Photodetector Array Camera and Spectrometer (PACS) at 100 and $160 \mu\text{m}$ (Poglitsch et al. 2010). The HERITAGE science goals are to study the life

cycle of matter in the Magellanic Clouds by probing the dust emission from the ISM and stars, which are the agents of galaxy evolution. *Herschel* SPIRE and PACS images provide key insights into the life cycle of galaxies because the far-infrared and submillimeter emission from dust grains is an effective tracer of the ISM dust, the most deeply embedded young stellar objects, and the dust ejected by evolved massive stars and supernovae.

During the science demonstration phase (SDP), we imaged a long strip across the LMC that covers the entire range of interesting objects we expect to study with HERITAGE: giant molecular and diffuse HI clouds (Roman-Duval et al. 2010; Kim et al. 2010), HII regions (Hony et al. 2010), young stellar objects (Sewiło et al. 2010), supernova remnants (Otsuka et al. 2010), and evolved stars (Boyer et al. 2010). In this paper, we present the observing strategy, processing and resulting data set (Sect. 2), the spectral energy distribution (SED) of the strip (Sect. 3) and the global spatial distribution of the dust and gas (Sect. 4).

2. Observations and data reduction

We observed a $2^\circ \times 8^\circ$ strip through the LMC, at a position angle of $\sim 22.5^\circ$ using the *Herschel* Observatory instruments SPIRE and PACS in parallel observing mode. Observations

* *Herschel* is an ESA space observatory with science instruments provided by European-led Principal Investigator consortia and with important participation from NASA.

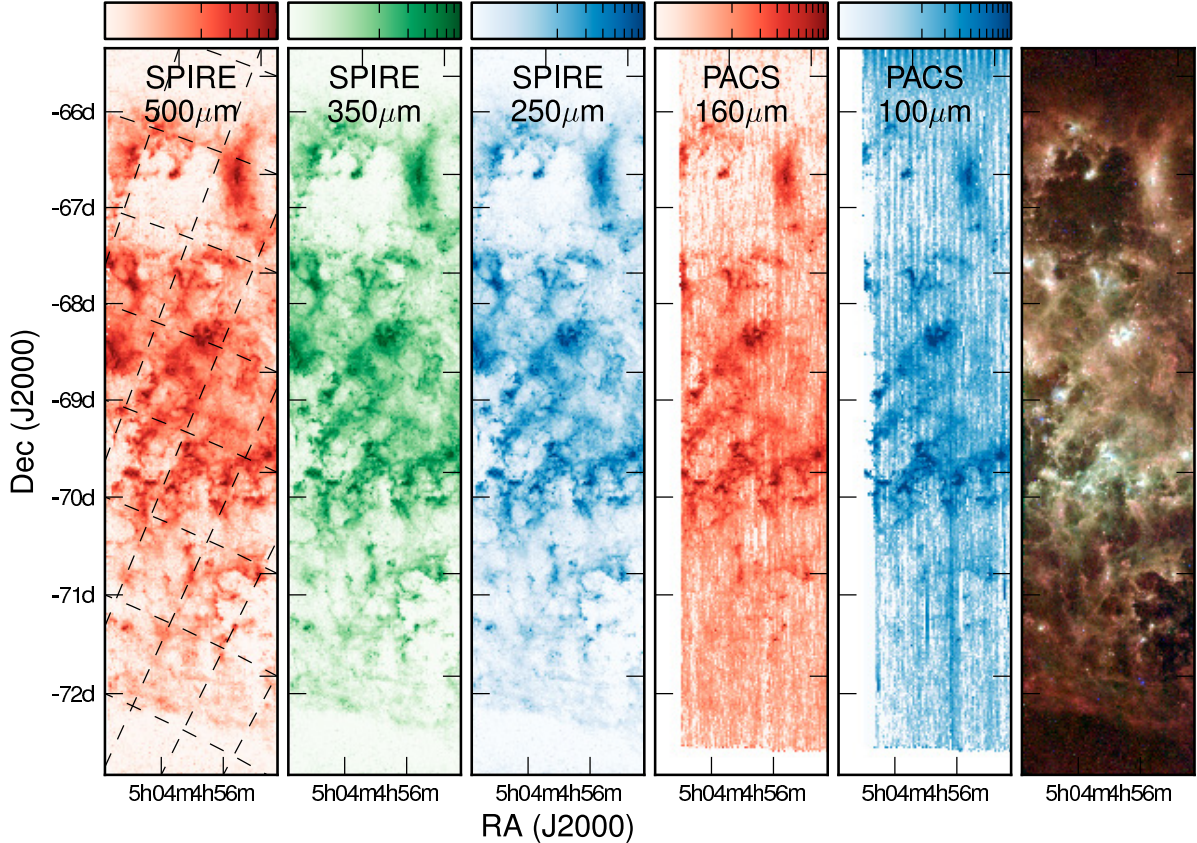


Fig. 1. The HERITAGE LMC SDP strip in the five *Herschel* bands with color bars on top. The strip has been reprojected to orient the figures up down, and represent the SPIRE coverage. The RA and Dec gridlines for all images here and in Fig. 3 are shown on the SPIRE 500 μm image. The PACS images are shifted because their coverage is shifted from the SPIRE data in parallel mode. From left to right the color scale ranges and tick steps for the arcsinh stretch (Lupton et al. 1999) in units of MJy/sr: 0 to 31, steps of 5 (SPIRE 500 μm), 0 to 71, steps of 10 (SPIRE 350 μm), 0 to 161, steps of 20 (SPIRE 250 μm), 0 to 250, steps of 25 (PACS 160 μm) and -20 to 150, steps of 15 (PACS 100 μm). Last on the right, a 3 color image with SPIRE 350 μm in red, MIPS 70 μm in green and MIPS 24 μm in blue (Meixner et al. 2006).

began on November 22, 2009 at $\sim 23:00$ h UT and lasted ~ 18 h. Two 9 h astronomical observation requests (AORs) were constructed back-to-back in time to cover the region. The observed wavelength bands include PACS 100 and 160 μm and SPIRE 250, 350 and 500 μm (Fig. 1).

2.1. PACS data reduction

The PACS data were reduced starting from the level 0 product using the HIPE¹ version 2.0 data reduction software (Ott 2010). In particular, bad and saturated pixels were masked, and a flat field correction and the photometric calibration were applied. The baseline signal level of each bolometer was estimated at the beginning and end points of each scan leg which lie outside of the LMC. For each pixel and each scan leg, a linear fit linking these two points was subtracted from the corresponding timeline. The multi-resolution median transforms (MMT) deglitching algorithm was then applied to correct sudden jumps in the timeline, or glitches, due to cosmic ray hits on the detector.

Initial two-dimensional maps were created for the 100 and 160 μm bands. However, severe striping appeared along the scan direction of the PACS maps. To mitigate the stripes, we subtracted an image of the striping, produced by unambiguously

identifying the power spectrum associated with the stripes, from the PACS images. The peak-to-peak variation was reduced from 0.021 to 0.011 in the PACS 100 and 160 μm images (Fig. 1). We do not use the PACS data for analysis in this paper, but anticipate that with cross-scans the PACS data will be viable for an extended map of the diffuse ISM. Nevertheless, the destriping was effective for small regions (Otsuka et al. 2010) and revealing point sources (Sewilo et al. 2010; Boyer et al. 2010).

The PACS 160 μm brightness values are systematically 15% lower than the corresponding MIPS 160 μm values from Meixner et al. (2006) using the adopted HIPE 1.2 calibration tree which is consistent with the 20% absolute flux calibration error for PACS (Poglitsch et al. 2010). The accuracy of the PACS astrometry was estimated by comparing the positions of point sources detected in *Spitzer* and PACS images of the LMC. We find offsets up to $6.5''$, with no preferred direction, which have been traced to issues with the star trackers during very large scan maps.

2.2. SPIRE data reduction

The SPIRE data were processed with HIPE version 2 (Ott 2010) and updated calibration products provided by the SPIRE team. Using custom routines, we removed jumps in the timeline caused by co-occurring glitches that affect all detectors of a single array simultaneously and by jumps in the thermistor voltages. We include the data at the end of each raster leg, during which the telescope turns around, in order to increase the coverage.

¹ HIPE is a joint development by the *Herschel* Science Ground Segment Consortium, consisting of ESA, the NASA *Herschel* Science Center, and the HIFI, PACS and SPIRE consortia.

For each scan, for each detector, we derived the median, baseline value of the measured flux at each end of the scan and subtract a linear baseline fitted to the two end points from the scans. Images at 250, 350 and 500 μm were constructed using the same reference point near the map center and are shown in Fig. 1. In order to remove any instrumental residuals in the SPIRE images, we use regions at the ends of the map, assume they should have zero emission and subtract a linear gradient from the images. This process was done in a consistent way for all ancillary data (MIPS, IRAC images and HI 21 cm emission images) so that comparisons between the data sets during the analysis are done in a consistent fashion.

As recommended by the SPIRE ICC we multiplied the maps by the flux calibration correction factors 1.02, 1.05, 0.94 for 250, 350 and 500 μm , respectively. The uncertainty in the final absolute point source flux calibration is $\pm 15\%$ (Swinyard et al. 2010). The final SPIRE maps were converted from Jy per beam to MJy/sr using the effective beam areas of 9.28×10^{-9} , 1.74×10^{-8} , and 3.57×10^{-8} sr for 250, 350 and 500 μm . The positions of point sources in the 250 μm map were compared with their positions at 24 μm from MIPS revealing offsets up to $10''$, similar to PACS. We corrected this problem with a small spherical rotation of the map, although some small residual astrometry errors remained, particularly far from the map centers.

3. Spectral energy distribution of the strip

The SED of the whole strip (Fig. 2) is fit with a comprehensive dust radiation model described in detail by Galametz et al. (2009). We adopt the Dale & Helou (2002; Eq. (1)) prescription, relating the dust mass to the integrated energy density to which it is exposed in units of the solar neighborhood intensity ($2.2 \times 10^{-5} \text{ W m}^{-2}$; Mathis et al. 1983). The standard model (model 1) we apply on the strip uses the Galactic ISM dust size distribution and composition of graphite and silicate grains from Zubko et al. (2004; BARE-GR-S model) who successfully fit the Galactic ISM dust emission out to submillimeter wavelengths. The dust emissivity index at the longest wavelengths is $\beta = 2$, which is also the assumed emissivity value for the SAGE-LMC ISM study by Bernard et al. (2008). However, as will be shown in Sect. 4, the grains of this model do not have enough emissivity in the submillimeter regime to fit the SPIRE fluxes, with a gas-to-dust mass ratio (GDR) consistent with the elemental abundances of the LMC. As a consequence, we also created another model (model 2) replacing the graphites (of model 1) by amorphous carbons from Rouleau & Martin (1991; AC1). This modified model has more emissivity at long wavelengths and therefore gives a realistic GDR. For both models, the PAH-to-dust mass fraction, f_{PAH} is reported in units of the Galactic PAH fraction of 0.046 (Draine & Li 2007); i.e. $f_{\text{PAH}} = 1$ means Galactic PAH abundance.

Both dust models provide an adequate fit to the SED of the strip. For model 1, the PAH-to-dust mass fraction is slightly lower than the Galactic mass fraction ($f_{\text{PAH}} = 0.85_{-0.06}^{+0.06}$), and its mass average stellar light intensity is twice the solar neighborhood intensity ($\langle U \rangle = 2.0_{-0.5}^{+0.4}$). Although H II regions can show much hotter dust (Hony et al. 2010), it does not dominate the emission. We had to decrease the mass fraction of small grains ($< 10 \text{ nm}$) by a factor of 2, in order to fit the 24 μm flux of the diffuse ISM. This has no significant effect on the total dust mass. Model 2 gives a lower PAH mass fraction ($f_{\text{PAH}} = 0.64_{-0.04}^{+0.07}$) and higher starlight intensity ($\langle U \rangle = 9.1_{-1.3}^{+1.0}$). Notably, the 500 μm flux is in excess compared to our SED model of the whole strip by $\sim 17\%$ (model 1) and $\sim 6\%$ (model 2). The origin of this

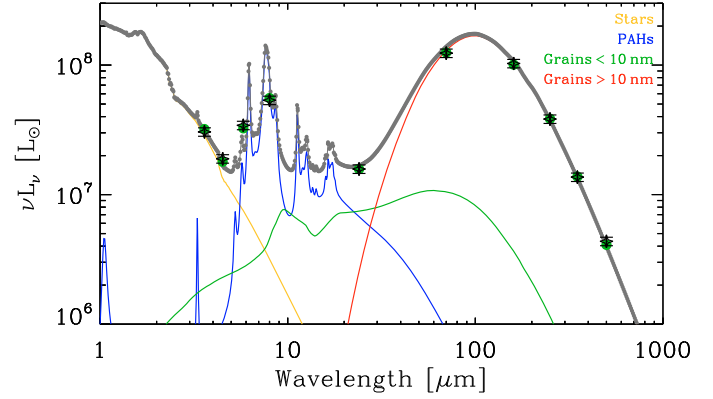


Fig. 2. The spectral energy distribution of the LMC HERITAGE SDP strip. Open diamonds with error bars mark the fluxes from the SPIRE 500, 350, and 250 μm , and the SAGE-LMC (Meixner et al. 2006) MIPS 160, 70 and 24 μm and the IRAC 8, 5.8, 4.5 and 3.6 μm bands in solar luminosities. The grey solid line is the result of model 2 using the amorphous carbon dust (see Sect. 3). The green filled points are the simulated photometry based on model 2. The ISM dust emission components are shown in blue, green and red according to the legend. The yellow line is the stellar emission component.

excess is still unknown; however, such submillimeter excesses have been observed before in other magellanic irregular galaxies by e.g. Galliano et al. (2005). The spatial distribution and potential location of this 500 μm flux excess is discussed in further details by Gordon et al. (2010).

4. Distributions of dust and gas in the strip

The emission at these *Herschel* wavelengths (Fig. 1) is dominated by dust emission from the ISM and similar to the *Spitzer* MIPS 160 μm emission (see e.g. Bernard et al. 2008). In fact, the SPIRE maps have an identical appearance in the overall strip which is expected because they trace the Rayleigh-Jeans tail of the ISM dust emission (Fig. 2). The three color image in Fig. 1 shows the variation in color temperature of this ISM dust emission. The SPIRE 350 μm (red) samples all dust emission, including some of the coldest dust ($T \approx 10 \text{ K}$), the MIPS 70 μm (green) is near the SED peak, and the MIPS 24 μm (blue) represents the hottest dust emission peaking in the H II regions.

The modelling described in Sect. 3 has also been applied to each pixel of the strip ($84''$ in angular size or 20 pc in linear size). The dust mass surface density, Σ_{dust} , average stellar light intensity, $\langle U \rangle$, and PAH-to-dust mass ratio, f_{PAH} , derived from dust model 2 are shown in Fig. 3. The details of these models are described by Galliano et al. (in prep.). We also derive a gas mass surface density (Σ_{gas}) image using the HI 21 cm emission from ATCA+Parkes by Kim et al. (2003), which traces the atomic neutral gas, and the CO $J = 1-0$ emission from the NANTEN survey by Fukui et al. (2008), which traces the molecular gas. The HI ($1'$ resolution) and CO ($2.6'$ resolution) maps were convolved to the IRIS 100 μm resolution ($4.3'$) using Gaussian kernels of widths $4.18'$ and $3.42'$ respectively. We used $X_{\text{CO}} = 7 \times 10^{20} \text{ cm}^{-2} \text{ K}^{-1} \text{ km s}^{-1}$ from Fukui et al. (2008) to derive the H_2 mass from CO. We combine the HI and H_2 column densities and adjust for the contribution of helium ($\times 1.36$ more) to create the total gas mass map in Fig. 3.

The dust mass distribution is spatially coincident with the SPIRE emission (Fig. 3) and is discussed in detail by Gordon et al. (2010). The HI 21 cm emission appears almost identical to the dust mass image (Fig. 3) and the similarity is quantified in more detail by Kim et al. (2010). The CO $J = 1-0$ emission

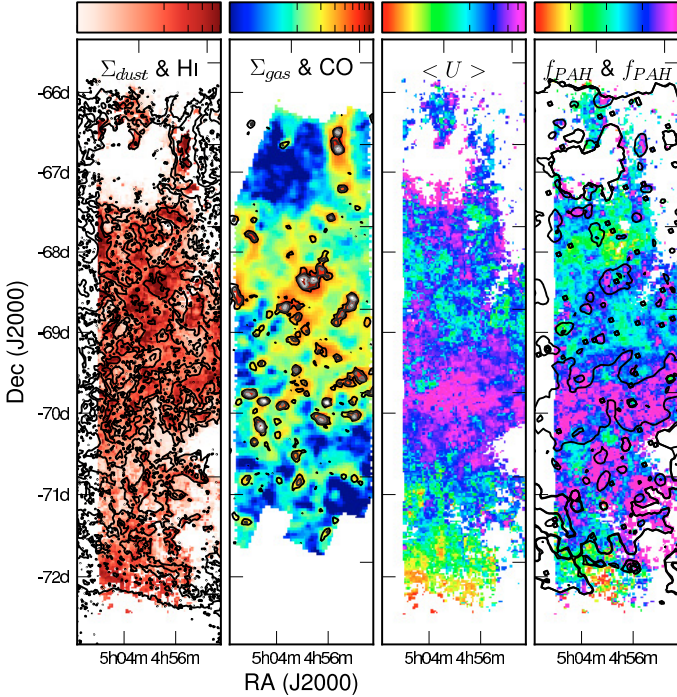


Fig. 3. Analysis images of the SDP strip based on model 2 (amorphous carbon, see Sect. 4) with color bars for each on top, described from left to right. Dust surface mass, Σ_{dust} , in red color arcsinh scale ranging from 0 to 0.255, in tick steps of 0.05 $M_{\odot} \text{ pc}^{-2}$ with HI contours at levels 1, 2 and 4 $\times 10^{21} \text{ H cm}^{-2}$ from Kim et al. (2003). Gas surface mass, Σ_{gas} , in jet color arcsinh scale ranging from 0 to 90, with steps of 10 in $M_{\odot} \text{ pc}^{-2}$ with CO contours at levels 0.8, 2, 4, 6 and 8 K km s^{-1} from Fukui et al. (2008). Average intensity of the radiation field, $\langle U \rangle$, in rainbow arcsinh color scale ranging from 0 to 20, with steps of 4 in units of the local solar neighborhood intensity. Distribution of the PAH-to-dust mass fraction, f_{PAH} , in units of the Galactic fraction of 0.046, as measured in the pixel based dust modeling with a rainbow color linear scale ranging from 0 to 0.8 in steps of 0.2 with the comparable f_{PAH} from Paradis et al. (2009) in black contours levels of 0.007, 0.2 and 2.

coincides with the peaks in the gas mass (Fig. 3) and two molecular clouds are discussed in more detail by Roman-Duval et al. (2010). The average starlight intensity heating the dust, $\langle U \rangle$, approximately follows the IRAC 3.6 μm image (e.g. Meixner et al. 2006) being enhanced in the stellar bar, and in the giant HII region complexes, such as N44, which is just north of the stellar bar. The spatial distribution of f_{PAH} derived by the model appears to be enhanced toward the stellar bar relative to the rest of the ISM (Fig. 3) in agreement with the findings of Paradis et al. (2009). We calculate that this enhancement is equivalent to $\lesssim 2000 M_{\odot}$ (model 1) or $\lesssim 300 M_{\odot}$ (model 2) in PAH. However, it could be the result of the increased hardness of the starlight along the bar, mistaken for an increased abundance.

Over the area in common between the gas and dust mass images, we calculate the total gas mass and divide by the total dust mass to derive a GDR. For model 1, we calculate a $\text{GDR} = 65^{+15}_{-18}$. This value is less than the Galactic GDR value of 157 from Zubko et al. (2004) which would be unexpected given the LMC's lower metallicity. In fact, the model 1 GDR is a factor of 3 lower than the SAGE-LMC ISM study by Bernard et al. (2008), who adopted similar Galactic dust properties. It is also too low by a factor of three compared to UV extinction measurements of Gordon et al. (2003). Thus, the addition of

the SPIRE data demands too much dust, if we assume standard graphite and silicate optical properties which have been successfully used for Galactic dust models. For model 2, we calculate a $\text{GDR} = 287^{+25}_{-42}$, which is much more consistent with prior observations. Essentially the required dust mass for model 2 is smaller by a factor ~ 3 because it requires a larger fraction of the dust to be illuminated by intenser radiation fields and therefore less dust mass to account for the observed SPIRE measurements. The fact that the pixel to pixel averaged intensity $\langle U \rangle = 7.6^{+3.7}_{-3.8}$ for model 2 is higher than for model 1 ($\langle U \rangle = 1.0^{+0.9}_{-0.4}$) makes model 2 more consistent with the expected intense radiation conditions within the LMC. The amorphous carbon emissivity is flatter in the submillimeter ($\beta < 2$) which is in agreement with the independent approach taken by Gordon et al. (2010) for this data set and with the independent analysis of the TOPHAT and DIRBE measurements of the LMC by Aguirre et al. (2003).

Although our results indicate that the standard graphite and silicate optical properties for Galactic dust are not appropriate for the LMC dust, our suggested amorphous carbon and silicate dust model is not necessarily unique or the best model. The analysis of dust models begun in this paper will need to be revisited when the full HERITAGE data set is available. In particular a full exploration of parameter space for dust properties including composition and size distribution can be investigated in terms of ISM environment and metallicity.

Acknowledgements. We acknowledge financial support from the NASA *Herschel* Science Center, JPL contracts # 1381522 & 1381650. M.R. is supported by FONDECYT No. 1080335 and FONDAF No. 15010003. We thank the contributions and support from the European Space Agency (ESA), the PACS and SPIRE teams, the *Herschel* Science Center and the NASA *Herschel* Science Center (esp. A. Barbar and K. Xu) and the PACS and SPIRE instrument control centers, without which none of this work would be possible.

References

- Aguirre, J. E., Bezaire, J. J., Cheng, E. S., et al. 2003, *ApJ*, 596, 273
 Bernard, J.-P., Reach, W. T., Paradis, D., et al. 2008, *AJ*, 136, 919
 Boyer, M. L., van Loon, J. Th., Sargent, B., et al. 2010, *A&A*, 518, L142
 Dale, D. A., & Helou, G. 2002, *ApJ*, 576, 159
 Draine, B. T., & Li, A. 2007, *ApJ*, 657, 810
 Dufour, R. J., Shields, G. A., & Talbot, R. J., Jr. 1982, *ApJ*, 252, 461
 Fukui, Y., Kawamura, A., Minamidani, T., et al. 2008, *ApJS*, 178, 56
 Galametz, M., Madden, S., Galliano, F., et al. 2009, *A&A*, 508, 645
 Galliano, F., Madden, S. C., Jones, A. P., Wilson, C. D., & Bernard, J.-P. 2005, *A&A*, 434, 867
 Gordon, K. D., Clayton, G. C., Misselt, K. A., Landolt, A. U., & Wolff, M. J. 2003, *ApJ*, 594, 279
 Gordon, K. D., Galliano, F., Hony, S., et al. 2010, *A&A*, 518, L89
 Griffin, M. J., Abergel, A., Abreu, A., et al. 2010, *A&A*, 518, L3
 Hony, S., Galliano, F., Madden, S. C., et al. 2010, *A&A*, 518, L76
 Kim, S., Staveley-Smith, L., Dopita, M. A., et al. 2003, *ApJS*, 148, 473
 Kim, S., Kwon, E., Madden, S. C., et al. 2010, *A&A*, 518, L75
 Lupton, R. H., Gunn, J. E., & Szalay, A. S. 1999, *AJ*, 118, 1406
 Mathis, J. S., Mezger, P. G., & Panagia, N. 1983, *A&A*, 128, 212
 Meixner, M., Gordon, K., Indebetouw, R., et al. 2006, *AJ*, 132, 2268
 Paradis, D., Reach, W. T., Bernard, J.-P., et al. 2009, *AJ*, 138, 196
 Pilbratt, G. L., Riedinger, J. L., Passvogel, T., et al. 2010, *A&A*, 518, L1
 Poglitsch, A., Waelkens, C., Geis, N., et al. 2010, *A&A*, 518, L2
 Otsuka, M., van Loon, J. Th., Long, K. S., et al. 2010, *A&A*, 518, L139
 Ott, S. 2010, in *Astronomical Data Analysis Software and Systems XIX*, ed. Y. Mizumoto, K.-I. Morita, & M. Ohishi, ASP Conf. Ser., in press
 Roman-Duval, J., Israel, F. P., Bolatto, A., et al. 2010, *A&A*, 518, L74
 Rouleau, F., & Martin, P. G. 1991, *ApJ*, 377, 526
 Sewilo, M., Indebetouw, R., Carlson, L. R., et al. 2010, *A&A*, 518, L73
 Schaefer, B. E. 2008, *AJ*, 135, 112
 Swinyard, B. M., Ade, P., Baluteau, J.-P., et al. 2010, *A&A*, 518, L4
 Szewczyk, O., Pietrzyński, G., Gieren, W., et al. 2009, *AJ*, 138, 1661
 Zubko, V., Dwek, E., & Arendt, R. G. 2004, *ApJS*, 152, 211

-
- ¹ Space Telescope Science Institute, 3700 San Martin Drive, Baltimore, MD 21218, USA
e-mail: meixner@stsci.edu
- ² Visiting Scientist at Smithsonian Astrophysical Observatory, Harvard-CfA, 60 Garden St., Cambridge, MA, 02138, USA
- ³ CEA, Laboratoire AIM, Irfu/SAP, Orme des Merisiers, 91191 Gif-sur-Yvette, France
- ⁴ Center for Astrophysics, 60 Garden St., MS 67, Harvard University, Cambridge, MA 02138, USA
- ⁵ *Spitzer* Fellow
- ⁶ Steward Observatory, University of Arizona, 933 North Cherry Ave., Tucson, AZ 85721, USA
- ⁷ Centre d'Étude Spatiale des Rayonnements, CNRS, 9 Av. du Colonel Roche, BP 4346, 31028 Toulouse, France
- ⁸ Department of Astronomy, Lab for Millimeter-wave Astronomy, University of Maryland, College Park, MD 20742-2421, USA
- ⁹ Observatoire Astronomique de Strasbourg, 11 rue de l'universite, 67000 Strasbourg, France
- ¹⁰ Department of Astronomy, 475 North Charter St., University of Wisconsin, Madison, WI 53706, USA
- ¹¹ Johns Hopkins University, Department of Physics and Astronomy, Homewood Campus, Baltimore, MD 21218, USA
- ¹² Louisiana State University, Department of Physics & Astronomy, 233-A Nicholson Hall, Tower Dr., Baton Rouge, LA 70803-4001, USA
- ¹³ Department of Astronomy, University of Virginia, and National Radio Astronomy Observatory, PO Box 3818, Charlottesville, VA 22903, USA
- ¹⁴ Department of Astrophysics, Nagoya University, Chikusa-ku, Nagoya 464-8602, Japan
- ¹⁵ Centre for Supercomputing and Astrophysics, Swinburne University of Technology, Hawthorn VIC 3122, Australia
- ¹⁶ Sterrewacht Leiden, Leiden University, PO Box 9513, 2300 RA Leiden, The Netherlands

- ¹⁷ Jodrell Bank Centre for Astrophysics, Alan Turing Building, School of Physics & Astronomy, University of Manchester, Oxford Road, Manchester M13 9PL, UK
- ¹⁸ Astronomy & Space Science, Sejong University, 143-747, Seoul, South Korea
- ¹⁹ 314 Physics Building, Department of Physics and Astronomy, University of Missouri, Columbia, MO 65211, USA
- ²⁰ Department of Physics and Astronomy, Iowa State University, Ames, IA, 50011, USA
- ²¹ Department of Physics and Astronomy, University College London, Gower Street, London WC1E 6BT, UK
- ²² MSSL, University College London, Holmbury St. Mary, Dorking, Surrey RH5 6NT, UK
- ²³ School of Physical & Geographical Sciences, Lennard-Jones Laboratories, Keele University, Staffordshire ST5 5BG, UK
- ²⁴ Department of Physical Science, Osaka Prefecture University, Gakuen 1-1, Sakai, Osaka 599-8531, Japan
- ²⁵ *Spitzer* Science Center, California Institute of Technology, MS 220-6, Pasadena, CA 91125, USA
- ²⁶ Max-Planck-Institut für extraterrestrische Physik, Giessenbachstraße 85748 Garching, Germany
- ²⁷ Stratospheric Observatory for Infrared Astronomy, Universities Space Research Association, Mail Stop 211-3, Moffett Field, CA 94035, USA
- ²⁸ Departamento de Astronomia, Universidad de Chile, Casilla 36-D, Santiago, Chile
- ²⁹ Observatories of the Carnegie Institution of Washington, 813 Santa Barbara St., Pasadena, CA, 91101, USA
- ³⁰ Astrophysique de Paris, Institute (IAP), CNRS UPR 341, 98bis boulevard Arago, 75014 Paris, France
- ³¹ Space Science Institute, 4750 Walnut St. Suite 205, Boulder, CO 80301, USA