



HAL
open science

High exploration behavior of termite propagules can enhance invasiveness

Louis Pailler, Arthur Matte, Alexis Groseiller, Pierre-André Eyer, Fanny Ruhland, Christophe Lucas

► **To cite this version:**

Louis Pailler, Arthur Matte, Alexis Groseiller, Pierre-André Eyer, Fanny Ruhland, et al.. High exploration behavior of termite propagules can enhance invasiveness. *Frontiers in Ecology and Evolution*, 2022, 10, 10.3389/fevo.2022.840105 . hal-03641830

HAL Id: hal-03641830

<https://hal.science/hal-03641830>

Submitted on 25 Nov 2022

HAL is a multi-disciplinary open access archive for the deposit and dissemination of scientific research documents, whether they are published or not. The documents may come from teaching and research institutions in France or abroad, or from public or private research centers.

L'archive ouverte pluridisciplinaire **HAL**, est destinée au dépôt et à la diffusion de documents scientifiques de niveau recherche, publiés ou non, émanant des établissements d'enseignement et de recherche français ou étrangers, des laboratoires publics ou privés.



High Exploration Behavior of Termite Propagules Can Enhance Invasiveness

Louis Paillet¹, Arthur Matte¹, Alexis Groseiller¹, Pierre-André Eyer², Fanny Ruhland¹ and Christophe Lucas^{1*}

¹ Institut de Recherche sur la Biologie de l'Insecte (UMR 7261), CNRS – University of Tours, Tours, France, ² Department of Entomology, Texas A&M University, College Station, TX, United States

OPEN ACCESS

Edited by:

Solange Del Carmen Issa Ponce,
Simón Bolívar University, Venezuela

Reviewed by:

Paulo A. V. Borges,
University of the Azores, Portugal
Thomas Chouvenec,
University of Florida, United States
Grant Terral Kirker,
Forest Products Laboratory,
United States Forest Service (USDA),
United States

*Correspondence:

Christophe Lucas
christophe.lucas@univ-tours.fr

Specialty section:

This article was submitted to
Behavioral and Evolutionary Ecology,
a section of the journal
Frontiers in Ecology and Evolution

Received: 20 December 2021

Accepted: 03 February 2022

Published: 04 March 2022

Citation:

Paillet L, Matte A, Groseiller A,
Eyer P-A, Ruhland F and Lucas C
(2022) High Exploration Behavior
of Termite Propagules Can Enhance
Invasiveness.
Front. Ecol. Evol. 10:840105.
doi: 10.3389/fevo.2022.840105

Social life is usually associated with enhanced propagule pressure, which increases the chance of introducing several individuals during a single introduction event. Social insects are therefore among the most successful invasive species, benefiting from rapid establishment and increased foundation success in new habitats. In termites, propagule pressure may also be increased by the development of reproductive individuals from a small group of foraging workers. This suggests that enhanced exploration activity may increase propagule pressure through an elevated chance of transporting isolated groups of foragers. Here, we analyzed the exploration behavior of three termite species of the *Reticulitermes* genus, comparing the invasive species *Reticulitermes flavipes* (testing both native and introduced populations) to the native species *Reticulitermes grassei* and *Reticulitermes lucifugus*. Different features representative of the exploration capacity were measured during 48 h, including: the number of tunnels, the length of tunnels, the number of foragers, and the interindividual distance of foragers in a straight line or through tunnels. Our results show that compared to the native *Reticulitermes* species, *R. flavipes* foragers from both populations dug more tunnels with a longer total length, and individuals were more spatially dispersed and covered a larger exploration zone. These findings suggest that the enhanced exploration ability of *R. flavipes* may have played a role in its invasion success, by increasing its propagule pressure through a higher chance of human-mediated transport. In addition, the absence of differences between the native and introduced populations of *R. flavipes* suggests that the exploration behaviors facilitating the worldwide invasion of this species originated in its native range.

Keywords: exploration behaviors, propagule pressure, termites, social insects, invasive species

INTRODUCTION

Biological invasions are a serious global environmental threat (Walther et al., 2009) and have economic repercussions due to their impairment of ecosystem services and destruction of human infrastructure (Scanes, 2018). The spread of an invasive species occurs in three stages: introduction of propagules (i.e., small group of individuals), establishment, and proliferation (Allendorf and Lundquist, 2003). An increased propagule pressure, which corresponds to larger propagule

sizes (number of individuals involved in an invasion event) and higher propagule numbers (number of release events), impacts these three stages and is therefore a key element of species invasiveness (Britton and Gozlan, 2013). Specific life history traits (longevity, fecundity, or number of generations) can increase invasiveness by not only accelerating the development of introduced colonies (Lockwood et al., 2005; Fahrner and Aukema, 2018), but also by enhancing the success of dispersal events.

Social insects are among the most successful species at invading new habitats, with 57% of invasive insects being social (Bertelsmeier, 2021). The invasive success of Hymenoptera (ants, bees, and wasps) and Isoptera (termites) is primarily attributed to their social life, whereby the cooperation of many individuals may buffer stressful environmental conditions in their novel environment(s). Furthermore, social life may increase propagule pressure by increasing the probability of introducing several individuals during a single introduction event (Duncan et al., 2014). In addition to social life, invaders can also exhibit specific life history traits that increase their propagule pressure and thus enhance their invasiveness (Chapman and Bourke, 2001; Hanna et al., 2013; Evans, 2021; Eyer and Vargo, 2021). For example, the presence of numerous queens per colony (i.e., polygyny) and colony foundation by fission increase propagule pressure by increasing the foundation success of new colonies (Yang et al., 2012), which results in lower dispersal costs (Rust and Su, 2012; Hanna et al., 2013). In subterranean termites, several biological factors are known to promote invasiveness. First, these termite species nest in wood or soil, which are globally traded materials. This feature increases the number of propagules dispersed, as it favors their chance of being introduced through unintended transport. The invasive success of many termite species is also enhanced by the development of neotenic reproductives from nymphs or workers, which can transform a small group of workers into a viable propagule (Eyer and Vargo, 2021). Both of these features increase their propagule pressure, as every transported wood/soil material containing a colony fragment may represent an invasive threat (Evans et al., 2013). The development of numerous reproductives in mature colonies also augments the reproductive capacity of the colony (Perdereau et al., 2015). In subterranean termites, colonies are often composed of multiple satellite nests and feeding sites connected by underground tunnels. The large number of workers per colony increases their capacity to exploit food through tunneling [sometimes over 100 m (Dronnet et al., 2005)]. In addition to representing a significant threat to human infrastructure (Patel et al., 2020; Shults et al., 2021), high foraging activity in hidden environments may enhance propagule pressure through an elevated chance of accidentally transporting isolated groups of workers. Notably, the ability of an invasive species to associate itself with human activity and survive transport may also favor the successful establishment of its propagules (Su, 2013). Moreover, higher exploratory behavior may facilitate discovery of favorable environment allowing to increase survival success. Interestingly, a variation in foraging strategy is often present between different species of the same genus (Mizumoto et al., 2020), sometimes even between colonies of the same

species (Mizumoto and Matsuura, 2013). These variations in foraging strategy may therefore differentially influence invasion success. For example, in drywood termites of the *Cryptotermes* genus, invasion proficiency is associated with the construction of longer tunnels and a foraging preference for small pieces of wood, which increases human-assisted dispersion (note that the one-piece genus *Cryptotermes* could not be directly compared to the multiple-piece genus *Reticulitermes*). Understanding the mechanisms driving the exploration behaviors of different termite species is therefore essential to better control their spread and reduce the associated economic costs.

Among subterranean termites, the genus *Reticulitermes* is one of the most costly pests, inflicting heavy damage upon wooden structures worldwide (Vargo and Husseneder, 2009; Evans et al., 2013; Buczkowski and Bertelsmeier, 2017). *Reticulitermes flavipes* (Kollar, 1837) is well established in France, after it was introduced from the eastern United States during the 18th century with the expansion of trade shipment (Vargo and Husseneder, 2009; Evans et al., 2013; Buczkowski and Bertelsmeier, 2017). Interestingly, differences in colony structure have been observed between native and introduced populations of this species. In the native populations, most colonies are headed by a couple of primary reproductives, whereas introduced colonies are several orders of magnitude larger and composed of hundreds of neotenic reproductives (Vargo and Husseneder, 2009; Baudouin et al., 2017). In its introduced range, *R. flavipes* is present in several urban areas, as well as in pine forests along the Atlantic coast. Concerning *Reticulitermes grassei* (Clément, 1978) and *Reticulitermes lucifugus* (Rossi, 1792), they are both considered as native in Europe. Interestingly, most *R. flavipes* populations occur in sympatry with *R. grassei* (Baudouin et al., 2018; Perdereau et al., 2019). In these populations, *R. flavipes* is dominant and outcompetes *R. grassei*, particularly in urban areas (Perdereau et al., 2011), which could also enhance dispersion by increasing chance of human mediated transport. Overall, the differences in ecological dominance between the different species, together with drastic changes in colony structure and colony size between the native and invasive ranges of *R. flavipes*, suggest that these species and populations potentially exhibit strong divergences in their exploration behaviors after propagule introductions.

In this study, we aimed at determining whether invasiveness is influenced by a shift in exploration behavior in the *Reticulitermes* genus after introduction of a propagule in a new environment. Using three species of this genus (*R. flavipes*, *R. grassei*, and *R. lucifugus*), we determined whether small groups of workers display differences in their exploration behaviors. These small groups were composed of thirty workers – the initial number of individuals required to form a viable propagule (Pichon et al., 2007). Due to the previously observed variations between species within this genus, we hypothesized that different species of *Reticulitermes* exhibit differences in their exploration behaviors. For the invasive species *R. flavipes*, we also compared these behaviors between native and introduced populations. We hypothesized that the changes in social organization observed between native and invasive populations may underlie differences in exploration behaviors between the two populations. Finally, we predicted that the two populations of *R. flavipes*

possess higher exploration efficiency compared to the two native species (*R. grassei* and *R. lucifugus*), whereby high foraging activity potentially drives invasive success *via* enhanced propagule pressure.

MATERIALS AND METHODS

Study Species and Laboratory Conditions

Fifty-three colonies of three different species of the *Reticulitermes* genus were collected in the field. Two populations of *R. flavipes* were collected in 2019, including sixteen colonies from Oléron (Charente-Maritime, France) for the invasive French population (called *R. flavipes FR*), and thirteen colonies from Lake Bryan (TX, United States) for the native American population (called *R. flavipes US*). Fourteen colonies of *R. grassei* were collected in 2019 from Oléron (Charente-Maritime, France), and ten colonies of *R. lucifugus* were collected in 2020 from Sainte-Maxime (Var, France). For each species, all colonies were sampled at least 300 m apart to ensure that distinct colonies were collected (Perdereau et al., 2010). Colonies were maintained under standard lab conditions ($26 \pm 1^\circ\text{C}$ and $>95\%$ RH) within black individual plastic boxes (Starpack) containing ultrapure paper (47 mm diameters; Whatman, grade 42 Ashless), moistened sand, and pine wood sawdust (Lucas et al., 2018).

Experimental Design

Behavioral observations were performed using a glass sheet design (Brossette et al., 2017). A hole (15 mm diameter) was drilled in the center of one of the two glass sheets to allow the introduction of termites into the exploration area. A diamond drill bit was used to drill the hole in the center to prevent the glass from cracking. The two glass sheets (220 mm \times 220 mm) were separated by two spacers (100 mm \times 10 mm \times 1.4 mm) located on each side, to obtain a 200 mm \times 200 mm exploration area. Sand was introduced between the two glass sheets and moistened with Milli-Q water 24 h before the introduction of individuals, and no food was added. One hour before observations, 30 workers were randomly selected per colony and placed in plastic boxes (50 mm diameter; Starpack Cat#04913) containing moistened pure cellulose paper (47 mm diameter; Whatman, GE Healthcare). Individuals were sorted under CO_2 then placed in a 1.5 ml tube to facilitate their introduction into the arena. The glass hole was plugged with plexiglass and covered with a glass blade to prevent escape. Measurements were carried out for 48 h using cameras (Basler acA1300 – 60gc) driven by the software Labview (v16.0). Cameras were fixed to a rail above the arenas. Pictures of the arena were taken at three observation times: 6, 24, and 48 h. For each species and population, five factors were investigated: the number of tunnels (NT), the total length of the tunnels, the number of foragers (NF) (individuals dispersed away from the introduction area), and the shortest distances between individuals (distance in a straight line and distance through tunnels). Data were recorded and analyzed blindly regarding the treatments (Penn and Frommen, 2010).

Spatial Data Analyses

The cartography of tunnels was analyzed using QGIS (v3.10.2). Pictures of the two-glass systems for each time were implemented as raster files. The RGF93/Lambert93 EPSG:2154 coordinate system was derived to scale the pictures (Bech et al., 2017). The spatial distribution was analyzed, using a point shape (on the neck) to spot each forager (individual dispersed away from the introduction area), as well as to calculate the shortest distance between foragers. Tunnels were counted and drawn to obtain an overall tunnel layout, thereby allowing the total length of the tunnels to be summed. Distances between foragers through tunnels were calculated using the previous tunnel layouts. Note that termites could block unused tunnels; however, in our analyses, such tunnels were not counted anymore. Therefore, the total length of the tunnels could sometimes decrease over time.

Statistical Analyses

The number and the length of tunnels, the interindividual distances (in a straight line and through tunnels) and the number of foragers were analyzed using linear mixed models (LMM). To fit with a normal distribution of residuals and homoscedasticity, all variables were log (+1)-transformed except the number of foragers. Two-way ANOVAs were performed for each variable and the explanatory factors were the observation time and the species. Colony IDs and observation times were used as random factors. The models were first tested with interactions between variables, which were removed when not significant ($p > 0.05$). To analyze significance across the different species for each observation time (if applicable) we performed Tukey's HSD all-pairwise comparisons tests.

Edge effects of the arena were tested by comparing colonies with tunnels hitting the edges to colonies without tunnels hitting the edges. Edge effects were calculated for the five variables and for each species/population. We performed either a Student's *t*-test or Wilcoxon test depending on normality of the data. Data which did not fit a normal distribution were the NT for *R. flavipes FR* and *R. lucifugus*, as well as the NF for *R. lucifugus*.

At the end of the experiments, termites were extracted to count the total number of alive individuals. No mortality effect was found (all $p > 0.20$); with a mortality range between 0 and 5 individuals per colony (1.2 dead on average). Over the 53 tested colonies, 19 colonies showed no mortality and only 2 colonies showed 5 dead.

To infer the relationships between the five variables, we conducted a Principal Component Analysis (PCA) for each observation time. These analyses provided five orthogonal principal components (PCs), out of which we retained the first two PCs (total variances explained $>83.9\%$; **Table 1**). We extracted loadings of each variable on the two PCs (**Table 1**) to analyze its contribution to the overall PCA, and therefore to determine its influence in driving the difference between species. We applied Mardia's principle, which states that a PC is loaded by a variable when the value of the loading is higher than 0.8 (Mardia et al., 1979). We then extracted projection values of colonies on the two PCs of the PCA. These values were used as explanatory variables in three linear models (one for each observation time), in which

TABLE 1 | Loadings of each variable on the two principal components (PC1 and PC2) for each observation time (6, 24, and 48 h).

	6 h		24 h		48 h	
	PC1	PC2	PC1	PC2	PC1	PC2
Number of tunnels (NT)	0.951	-0.184	0.833	-0.426	0.587	0.781
Tunnels length (TL)	0.978	-0.057	0.948	-0.105	0.917	0.116
Interindividual distance – straight lines (DL)	0.976	-0.084	0.958	0.057	0.945	-0.217
Interindividual distance – through tunnels (DT)	0.978	-0.089	0.965	-0.002	0.939	-0.174
Number of foragers (NF)	0.892	0.449	0.816	0.491	0.671	-0.291
Eigenvalues	4.563	0.254	4.108	0.437	3.418	0.795
Variance explained (%)	91.3	5.1	82.2	8.8	68.2	15.7
Cumulative variance explained (%)	91.3	96.4	82.2	91	68.2	83.9

Values showing significant differences between species are in bold. Eigenvalues and explained variances are also represented.

the species was entered as fixed factor. We conducted one-way ANOVAs to compare PC values across species (one for each PC). When applicable, pairwise comparisons between species were tested using Tukey's post-hoc tests.

All analyses and graphs were performed using the *lme4* (Bates et al., 2015), *car* (Fox et al., 2013), *emmeans* (Lenth, 2020), *FactoMineR* (Lê et al., 2008), *sciplot* (Morales, 2017), and *factoextra* (Kassambara and Mundt, 2020) packages in R v3.6.1.¹

RESULTS

The five variables showed the same pattern (**Figure 1**). The number of tunnels (ANOVA, $F_{6,53} = 25.49$, $p < 0.001$) and the total length of the tunnels (ANOVA, $F_{6,53} = 70.05$, $p < 0.0001$), the interindividual distances in a straight line (ANOVA, $F_{6,53} = 117.43$, $p < 0.0001$) and through tunnels (ANOVA, $F_{6,53} = 45.26$, $p < 0.0001$), and the number of foragers (ANOVA, $F_{6,53} = 28.05$, $p < 0.0001$) were dependent on the interaction between the species and the observation time. No difference between species/populations were observed at 48 h, regardless of the variable considered (Tukey's multiple comparisons test, all $p > 0.0794$).

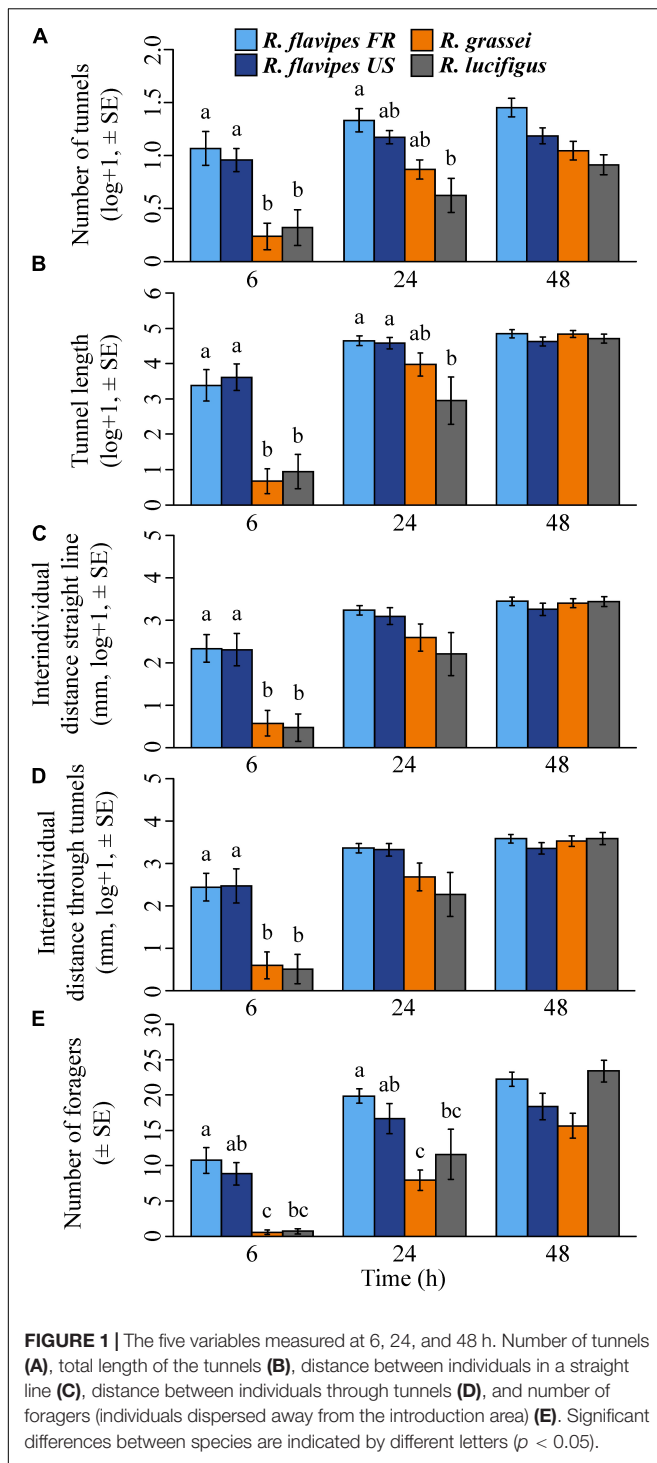
The number of tunnels at 6 h was higher in the two populations of *R. flavipes* than in *R. grassei* and *R. lucifugus* (Tukey's multiple comparisons test, all $p < 0.024$; **Figure 1A**). But at 24 h, *R. flavipes* FR constructed more tunnels than only *R. lucifugus* (Tukey's multiple comparisons test, $p = 0.004$). The total length of the tunnels at 6 h for *R. flavipes* FR and *R. flavipes* US was higher than *R. grassei* and *R. lucifugus* (Tukey's multiple comparisons test, all $p < 0.0001$; **Figure 1B**). But at 24 h, tunnels of *R. flavipes* FR and *R. flavipes* US were longer than only *R. lucifugus* (Tukey's multiple comparisons test, all $p < 0.042$). Both interindividual distances were higher for *R. flavipes* FR and *R. flavipes* US compared to *R. grassei* and *R. lucifugus*, 6 h after introduction (in a straight line, Tukey's multiple comparisons test, all $p < 0.0001$; **Figure 1C** and through tunnels, Tukey's multiple comparisons test, all $p < 0.01$; **Figure 1D**). However, no significant differences were observed between species/populations after 24 or 48 h. At 6 and 24 h (**Figure 1E**), the number of foragers was higher for *R. flavipes*

FR compared to *R. grassei* (Tukey's multiple comparisons test, both $p < 0.001$) and *R. lucifugus* (Tukey's multiple comparisons test, both $p < 0.038$). The number of foragers for *R. flavipes* US was significantly higher compared to *R. grassei* (Tukey's multiple comparisons test, both $p < 0.023$), but not compared to *R. lucifugus* (Tukey's multiple comparisons test, both $p > 0.067$) at 6 or 24 h. No edge effect was found between species for the five variables (all $p > 0.067$). Nevertheless, it must be noted that colonies were rarely observed with tunnels hitting edges, as only four colonies of *R. flavipes* FR, one colony of *R. flavipes* US and three colonies of *R. lucifugus* made it to the edge (and none for *R. grassei*). Overall, these results revealed a strong difference in exploration strategies between the two populations of *R. flavipes* and the two other *Reticulitermes* species at 6 h, and that this difference subsequently faded over time (**Figure 2**). Additionally, no difference was ever observed between the native and invasive populations of *R. flavipes*, and no difference was observed between the two non-invasive species, *R. grassei* and *R. lucifugus*.

The differences in exploration behavior between species at 6 h were highlighted on the PCA, which segregated the two populations of *R. flavipes* from the two other species. This segregation mostly results from a difference between species on the first component (PC1) (**Figure 3A**; ANOVA, $F_{3,53} = 12.8$, $p < 0.01$), which explained 91.29% of the variation observed. Consistent with our results above, significant differences were observed between *R. flavipes* and the two non-invasive species, while no difference was observed between the native and invasive populations of *R. flavipes*, and no difference was observed between *R. grassei* and *R. lucifugus*. At 6 h, PC1 was positively loaded by all five variables (**Table 1**), which were all correlated together, thereby reflecting the importance of all variables in explaining the differences between species (**Figure 3B** and **Table 1**; all the loadings > 0.816). However, no difference between species was observed at 6 h on PC2 (**Figure 3A**; ANOVA, $F_{3,53} = 1.27$, $p = 0.29$) and no variable was loaded on PC2; but it is important to note that this component only slightly explained the observed variance (5.09%).

At 24 h, although the PCA only slightly segregated the different species studied, PC1 was able to discriminate the two populations of *R. flavipes* from *R. lucifugus* (**Figure 3C**, Tukey's multiple comparisons test, both $p < 0.03$), as well as *R. flavipes* FR and *R. grassei* (**Figure 3C**; Tukey's multiple comparisons

¹www.r-project.org



test, $p < 0.04$). Similarly, PC1 was positively loaded by all five variables (Table 1). Interestingly, PC2 significantly segregated *R. grassei* and *R. lucifugus*. This difference primary stemmed from the number of tunnels and the number of foragers, as these variables were more loaded on PC2 (Figure 3D) than the three other variables, despite their loading values being lower than the threshold value of 0.8 (Table 1). At 24 h, *R. grassei* was characterized by a higher NT, while *R. lucifugus* was characterized by a higher NF.

At 48 h, the PCA was unable to discriminate the three species, as all colonies studied randomly segregated along each axis, regardless of their species or population of origin. Accordingly, there was no difference between species/populations at 48 h on PC1 (Figure 3E; ANOVA, $F_{3,53} = 5.59$, $p = 0.35$), which explained most of the variance observed (68.24%). At 48 h, only the tunnel length (TL) and the two interindividual distances (DL, DT) were associated with PC1 (Figure 3F and Table 1; all the loadings > 0.917). Interestingly, PC2 at 48 h gave the same result as PC1 at 24 h, with it slightly segregating *R. flavipes* and the two non-invasive species, despite only the difference between *R. flavipes FR* and *R. lucifugus* being significant. Following Mardia's principle (Mardia et al., 1979), PC2 at 48 h was only marginally loaded by the number of tunnels (Figure 3F; loadings = 0.781).

DISCUSSION

The three species of *Reticulitermes* studied exhibited differences in their exploration behaviors for all five observed variables. Six hours after introduction, the two populations of *R. flavipes* (US and FR) showed a greater exploration ability compared to *R. grassei* and *R. lucifugus*. Foragers of *R. flavipes* were able to dig more tunnels with a longer total length, with individuals being more spatially dispersed and covering a larger exploration zone. Interestingly, the differences observed between species at 6 h almost disappear at 24 h, and are equal at 48 h, suggesting that *R. flavipes* more rapidly reaches adequate gallery size. These findings suggest that the enhanced exploration ability of *R. flavipes* may have played a role in its invasion success. The rapid construction of long tunnels may increase propagule pressure through a higher chance of human-mediated transport. Surprisingly, both the native and invasive population of *R. flavipes* have similar exploration capacities, suggesting that these exploration behaviors likely originated in its native range.

Both native and introduced populations of *R. flavipes* exhibit high exploration abilities for all five variables. Similar, yet different, tunneling patterns have been reported in invasive subterranean termites of the *Coptotermes* genus (Mizumoto et al., 2020). During experiments with food, *Coptotermes formosanus* constructs a low number of long tunnels, while *Coptotermes gestroi* constructs a high number of short tunnels (Grace et al., 2004; Lee et al., 2007). Longer tunnels are potentially associated with higher propagule pressure. This ability to colonize many pieces of wood also increases the chance of human-mediated transportation (Evans et al., 2011). Our data show that both populations of *R. flavipes* are characterized by a high number of long tunnels, 6 h after the introduction of foragers. These traits could represent advantages in terms of exploration capacities, food detection and foraging strategies, as described in termites and ants (Traniello, 1989; Hölldobler and Wilson, 1990; Traniello and Leuthold, 2000). Interestingly, the differences between species decrease over time and completely disappear at 48 h. The lack of differences between species at 48 h could be explained by the reduced size of the arena. Other experiments with similar two-dimension designs showed that the maximum tunneling distances are dependent on the size of the arena

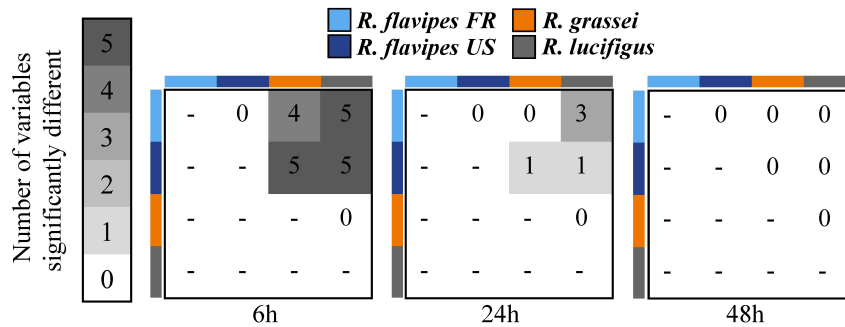


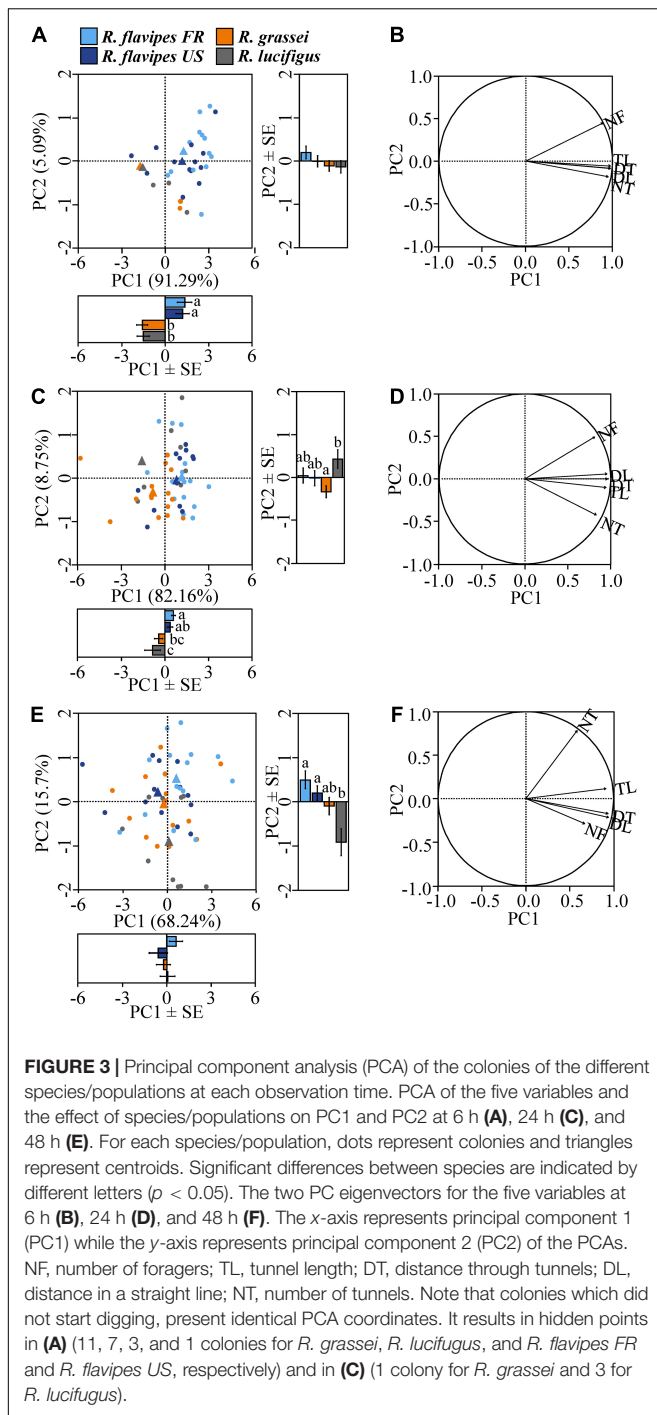
FIGURE 2 | Summary of the differences between the three species, reflecting the variations in the five measured variables at 6, 24, and 48 h.

(Nobre et al., 2007; Li et al., 2010; Chouvenec et al., 2011), as well as the group size (Su and Lee, 2009). However, our findings reveal that *R. flavipes* reaches the maximum/adequate gallery size faster than the two other *Reticulitermes* species, confirming the superior exploration ability of this species. Additionally, in our experimental design, colonies rarely built tunnels that met the edge of the arena, even if we cannot exclude that they detected the edges. Indeed, termites are able to use vibrational cues to estimate the size of a piece of wood (Evans et al., 2005). Nevertheless, removing the few colonies that hit the edge did not affect the results for any of the five variables. Another factor influencing foraging patterns is the caste ratio, since the presence of soldiers increases the survival of workers by reducing the stress caused by competitors (Tian et al., 2017). It could be interesting to test the group size/composition effect on the exploration behaviors in these different species, with a suitable design for a larger number of individuals.

This higher short-term exploration capacity for *R. flavipes* FR compared to *R. grassei* and *R. lucifugus* may also reflect differences in their life history traits. Indeed, *R. flavipes* and *R. grassei* are sympatric in the sampling area of the current study (Oléron) where they display differences in their life history traits. Both species exhibit extended families (i.e., the presence of multiple neotenic reproductives), but they differ in traits like parental care (Brossette et al., 2019), colony foundation (Brossette et al., 2017) and aggressiveness (Perdereau et al., 2011; Duarte et al., 2018). Feeding at multiple sites is a common trait for *R. flavipes*, while less than half of the colonies of *R. grassei* exhibit this trait in the studied population (Deheer et al., 2005). Exploiting multiple feeding sites leads to an increase in distance between individuals, as observed in *R. flavipes* in this study. Moreover, in accordance with our findings, introduced populations of *R. flavipes* have been previously found to inhabit larger foraging areas (up to 90,000 m²) and to construct linear foraging tunnels (sometimes up to 320 m) compared to *R. grassei* (up to 70 m, respectively) (Deheer et al., 2005; Dronnet et al., 2005). Overall, *R. flavipes* exhibits a higher survival rate, a higher production of individuals, along with a higher total number of individuals during colony foundation compared to *R. grassei* (Brossette et al., 2017). Similar results have been observed in the eastern United States where *R. flavipes* and *Reticulitermes virginicus* are sympatric species. *R. flavipes* has

higher foraging activities and is now considered as invasive in other United States locations, while *R. virginicus* remains endemic to eastern United States (Pitts-Singer and Forschler, 2000; Janowiecki and Vargo, 2021). As shown here, *R. flavipes* also possesses a higher short-term exploration rate compared to the two native *Reticulitermes* species. Altogether, these results may explain both the dominance of *R. flavipes* during interspecific competition and its invasive success. For *R. lucifugus*, no study has investigated its social structure or life history traits during colony foundation. Our study represents the first report on the exploration capacities of this understudied species despite its large geographical distribution in Europe (Kutnik et al., 2020). As shown in the results, differences between species are present at different time points after propagule introduction.

The native United States and the invasive French populations of *R. flavipes* exhibit similar exploration features, suggesting that the introduction of this species did not alter its foraging strategy. The establishment of an invasive species in a new environment is often facilitated by certain biological traits. Sometimes, such traits are already present in the native population and may represent a pre-disposition to invasion, as was described in plants for tetraploidy or biomass production (Henery et al., 2010; Van Kleunen et al., 2011). On the other hand, introduced populations sometimes exhibit post-introduction phenotypic changes in morphology, behavior, and/or life history traits. Finally, in some cases, successful invaders may simply occupy a vacant ecological niche within their novel environment(s), without exhibiting phenotypic changes when compared to native populations or greater competitive ability compared to native species. Specific traits favoring invasive success have also been described in social insects (Eyer and Vargo, 2021). For example, the perennial colony cycle and the low discrimination toward non-nestmates already present in the native ranges of *Vespa* wasps may have facilitated queen recruitment and the formation of highly polygynous nests in their invasive ranges (Kasper et al., 2008; Hanna et al., 2013). In the ant *Brachyponera chinensis*, the occurrence of highly inbred colonies in native populations may have acted as a pre-adaptive trait for invasiveness, mitigating the detrimental effect of inbreeding that introduced colonies commonly experience after a bottleneck event (Eyer et al., 2018). Here, the rapid and efficient exploration strategy pre-existing in the United States population of *R. flavipes* may have promoted its invasive success, by enabling



the development of spatially expansive colonies spreading across multiple sites. In addition, it may favor invasiveness by increasing its ecological dominance and monopolization of resources. In its native range, *R. flavipes* exhibits a smaller foraging area (up to 800 m²) and linear foraging tunnels (sometimes up to 76 m) compared to the introduced population (Vargo and Husseneder, 2009). Finally, this feature may increase its propagule pressure, by increasing the likelihood of human-mediated transport of distinct colony fragments. Moreover, in the *Reticulitermes* genus,

workers are able to differentiate into neotenic reproductives (Myles, 1999), meaning that every piece of transported wood or soil with workers can become an independent functional colony (Evans et al., 2013). Interestingly, a recent molecular analysis suggests that extensive human-mediated jump dispersal is common in both the native and introduced ranges of *R. flavipes* (Eyer et al., 2021), which is consistent with the high exploration abilities observed in both of its ranges here. However, the widespread admixture within and across native and introduced populations through repeated introductions and potential re-invasion of the native range from the French population results in a lack of differentiation between native and introduced ranges (Eyer et al., 2021). It could therefore explain why no differences in exploration strategy were observed between the two tested populations of *R. flavipes*. Future experiments on different populations of *R. flavipes* in the United States will enable the investigation of possible adaptive traits favoring exploration to different environments.

Overall, this study provides new knowledge to better understand the establishment of *R. flavipes* in France, as well as the exploration characteristics that favor its invasive success. *R. flavipes* is prevalent in urban areas, while the two other species are mostly present in non-anthropized environments (Perdereau et al., 2019). Anthropized environments are subject to drastic changes caused by human activities. The rapid exploration of surrounding areas could represent a key factor in the establishment of *R. flavipes* colonies, and therefore a major advantage for its invasive success in urban areas. Our results therefore emphasize the need for early detection to prevent damages and to control expansion of *R. flavipes*. *R. flavipes* exhibits enhanced colony foundation characteristics compared to *R. grassei*, such as a significantly higher survival rate of alates (adultoid reproductive) and a higher production of eggs, larvae and workers (Brossette et al., 2017). Overall, our study highlights the greater short-term exploration capacity of the invasive species, *R. flavipes*, compared to the two other *Reticulitermes* species studied. Together with its capacity for developing numerous reproductives, reduced intraspecific aggression, rapid colony foundation, and elevated interspecific competitive ability (Perdereau et al., 2011; Brossette et al., 2017, 2019), this enhanced exploration activity may promote its invasiveness. Greater exploration activity not only increases species dominance and facilitates the monopolization of resources, but also increases propagule pressure, which is an essential component of dispersal.

DATA AVAILABILITY STATEMENT

The original contributions presented in the study are publicly available. This data can be found here: doi: 10.5281/zenodo.6023265.

AUTHOR CONTRIBUTIONS

CL, LP, AG, and FR designed the experiments. CL, LP, and FR coordinated the data collection. LP and AM collected the data. LP and CL performed the data analysis. LP, CL, and P-AE wrote

the manuscript with help of FR. All authors contributed to the article and approved the submitted version.

FUNDING

This work was supported by the European Union's Horizon 2020 Research and Innovation Program (grant agreement 773324) and the Région Centre-Val de Loire (APR-IR 2017-00117111 BioControleTermite; APR-IA 2012).

REFERENCES

- Allendorf, F. W., and Lundquist, L. L. (2003). Introduction: population biology, evolution, and control of invasive species. *Conserv. Biol.* 17, 24–30. doi: 10.1046/j.1523-1739.2003.02365.x
- Bates, D., Mächler, M., Bolker, B., and Walker, S. (2015). Fitting linear mixed-effects models using lme4. *J. Stat. Softw.* 67, 1–47.
- Baudouin, G., Bech, N., Bagnères, A.-G., and Dedeine, F. (2018). Spatial and genetic distribution of a north American termite, *Reticulitermes flavipes*, across the landscape of Paris. *Urban Ecosyst.* 21, 751–764. doi: 10.1007/s11252-018-0747-9
- Baudouin, G., Dedeine, F., Bech, N., Bankhead-Dronnet, S., Dupont, S., and Bagnères, A.-G. (2017). An american termite in Paris: temporal colony dynamics. *Genetica* 145, 491–502. doi: 10.1007/s10709-017-9991-9
- Bech, N., Depeux, C., Durand, S., Debenest, C., Lafitte, A., and Beltran-Bech, S. (2017). When GIS zooms in: spatio-genetic maps of multipaternity in *Armadillidium vulgare*. *Genetica* 145, 503–512. doi: 10.1007/s10709-017-9992-8
- Bertelsmeier, C. (2021). Globalization and the anthropogenic spread of invasive social insects. *Curr. Opin. Insect Sci.* 46, 16–23. doi: 10.1016/j.cois.2021.01.006
- Britton, J. R., and Gozlan, R. E. (2013). How many founders for a biological invasion? Predicting introduction outcomes from propagule pressure. *Ecology* 94, 2558–2566. doi: 10.1890/13-0527.1
- Brossette, L., Bagnères, A.-G., Millot, A., Blanchard, S., Dupont, S., and Lucas, C. (2017). Termite's royal cradle: does colony foundation success differ between two subterranean species? *Insectes Soc.* 64, 515–523. doi: 10.1007/s00040-017-0571-x
- Brossette, L., Meunier, J., Dupont, S., Bagnères, A.-G., and Lucas, C. (2019). Unbalanced biparental care during colony foundation in two subterranean termites. *Ecol. Evol.* 9, 192–200. doi: 10.1002/ece3.4710
- Buczowski, G., and Bertelsmeier, C. (2017). Invasive termites in a changing climate: a global perspective. *Ecol. Evol.* 7, 974–985. doi: 10.1002/ece3.2674
- Chapman, R. E., and Bourke, A. F. G. (2001). The influence of sociality on the conservation biology of social insects. *Ecol. Lett.* 4, 650–662. doi: 10.1046/j.1461-0248.2001.00253.x
- Chouvenc, T., Bardunias, P., Li, H.-F., Elliott, M. L., and Su, N.-Y. (2011). Planar arenas for use in laboratory bioassay studies of subterranean termites (*Rhinotermitidae*). *Florida Entomol.* 94, 817–826. doi: 10.1653/024.094.0413
- Deheer, C. J., Kutnik, M., Vargo, E. L., and Bagnères, A.-G. (2005). The breeding system and population structure of the termite *Reticulitermes grassei* in Southwestern France. *Heredity* 95, 408–415. doi: 10.1038/sj.hdy.6800744
- Dronnet, S., Chapuisat, M., Vargo, E. L., Bagnères, A.-G., and Lohou, C. (2005). Genetic analysis of the breeding system of an invasive subterranean termite. *Reticulitermes santonensis*, in urban and natural habitats. *Mol. Ecol.* 14, 1311–1320. doi: 10.1111/j.1365-294X.2005.02508.x
- Duarte, S., Nobre, T., Borges, P. A. V., and Nunes, L. (2018). Symbiotic flagellate protists as cryptic drivers of adaptation and invasiveness of the subterranean termite *Reticulitermes grassei* Clément. *Ecol. Evol.* 8, 5242–5253. doi: 10.1002/ece3.3819
- Duncan, R. P., Blackburn, T. M., Rossinelli, S., and Bacher, S. (2014). Quantifying invasion risk: the relationship between establishment probability and founding population size. *Methods Ecol. Evol.* 5, 1255–1263.
- Evans, T. A. (2021). Predicting ecological impacts of invasive termites. *Curr. Opin. Insect Sci.* 46, 88–94. doi: 10.1016/j.cois.2021.03.003

ACKNOWLEDGMENTS

We are grateful to Miguel Pineirua for the video monitoring scripts and for his help to develop the recording design, and to Esteban Moyer for his help to install the video monitoring setup. We also thank Simon Dupont, Carole Labrousse, and Esteban Moyer for their help with field collection and rearing; and Alexander Blumenfeld for helpful comments on previous drafts of this manuscript.

- Evans, T. A., Forschler, B. T., and Grace, J. K. (2013). Biology of invasive termites: a worldwide review. *Annu. Rev. Entomol.* 58, 455–474. doi: 10.1146/annurev-entomol-120811-153554
- Evans, T. A., Inta, R., and Lai, J. C. S. (2011). Foraging choice and replacement reproductives facilitate invasiveness in drywood termites. *Biol. Invasions.* 13, 1579–1587.
- Evans, T. A., Lai, J. C. S., Toledano, E., McDowall, L., Rakotonarivo, S., and Lenz, M. (2005). Termites assess wood size by using vibration signals. *Proc. Natl. Acad. Sci. U.S.A.* 102, 3732–3737. doi: 10.1073/pnas.0408649102
- Eyer, P., and Vargo, E. L. (2021). Breeding structure and invasiveness in social insects. *Curr. Opin. Insect Sci.* 46, 24–30. doi: 10.1016/j.cois.2021.01.004
- Eyer, P., Blumenfeld, A. J., Johnson, L. N. L., Perdereau, E., Shults, P., Wang, S., et al. (2021). Extensive human-mediated jump dispersal within and across the native and introduced ranges of the invasive termite *Reticulitermes flavipes*. *Mol. Ecol.* 30, 3948–3964. doi: 10.1111/mec.16022
- Eyer, P., Matsuura, K., Vargo, E. L., Kobayashi, K., Yashiro, T., Suehiro, W., et al. (2018). Inbreeding tolerance as a pre-adapted trait for invasion success in the invasive ant *Brachyponera chinensis*. *Mol. Ecol.* 27, 4711–4724. doi: 10.1111/mec.14910
- Fahrner, S., and Aukema, B. H. (2018). Correlates of spread rates for introduced insects. *Glob. Ecol. Biogeogr.* 27, 734–743.
- Fox, J., Friendly, M., and Weisberg, S. (2013). *Hypothesis Tests for Multivariate Linear Models Using the car Package*. R J. Available online at: <https://journal.r-project.org/archive/2013/RJ-2013-004/index.html> (accessed July 30, 2021).
- Grace, J. K., Aihara-Sasaki, M., and Yates, J. R. (2004). Differences in tunneling behavior of *Coptotermes vastator* and *Coptotermes formosanus* (Isoptera: Rhinotermitidae). *Sociobiology* 43, 153–158.
- Hanna, C., Cook, E. D., Thompson, A. R., Dare, L. E., Palaski, A. L., Foote, D., et al. (2013). Colony social structure in native and invasive populations of the social wasp *Vespa pensylvanica*. *Biol. Invasions.* 16, 283–294.
- Henery, M. L., Bowman, G., Mráz, P., Treier, U. A., Gex-Fabry, E., Schaffner, U., et al. (2010). Evidence for a combination of pre-adapted traits and rapid adaptive change in the invasive plant *Centaurea stoebe*. *J. Ecol.* 98, 800–813.
- Hölldobler, B., and Wilson, E. O. (1990). *The Ants*. Berlin: Springer-Verlag.
- Janowiecki, M., and Vargo, E. L. (2021). Seasonal activity, spatial distribution, and physiological limits of subterranean termites (*Reticulitermes Species*) in an east texas forest. *Insects* 12:86. doi: 10.3390/insects12020086
- Kasper, M. L., Reeson, A. F., and Austin, A. D. (2008). Colony characteristics of *Vespa germanica* (F.) (Hymenoptera: Vespidae) in a Mediterranean climate (southern Australia). *Aust. J. Entomol.* 47, 265–274.
- Kassambara, A., and Mundt, F. (2020). *Factoextra: Extract and Visualize the Results of Multivariate Data Analyses*. Available online at: <https://cran.r-project.org/web/packages/factoextra/index.html> (accessed July 30, 2021).
- Kutnik, M., Paulmier, I., Ansard, D., Montibus, M., and Lucas, C. (2020). “Update on the distribution of termites and other wood-boring insects in Europe, p. IRG/WP 20-10960, in *Proceedings IRG Annual Meeting*, 1–15.
- Lê, S., Josse, J., and Husson, F. (2008). FactoMineR: an R package for multivariate analysis. *J. Stat. Softw.* 25, 253–258.
- Lee, S.-H., Bardunias, P., and Su, N.-Y. (2007). Optimal length distribution of termite tunnel branches for efficient food search and resource transportation. *Biosystems* 90, 802–807. doi: 10.1016/j.biosystems.2007.04.004
- Lenth, R. (2020). *Emmeans: Estimated Marginal Means, aka Least-Squares Means*. Available online at: <https://cran.r-project.org/web/packages/emmeans/index.html> (accessed July 30, 2021).

- Li, H.-F., Yang, R.-L., and Su, N.-Y. (2010). Interspecific competition and territory defense mechanisms of *Coptotermes formosanus* and *Coptotermes gestroi* (Isoptera: Rhinotermitidae). *Environ. Entomol.* 39, 1601–1607. doi: 10.1603/EN09262
- Lockwood, J. L., Cassey, P., and Blackburn, T. (2005). The role of propagule pressure in explaining species invasions. *Trends Ecol. Evol.* 20, 223–228. doi: 10.1016/j.tree.2005.02.004
- Lucas, C., Brossette, L., Lefloch, L., Dupont, S., Christidès, J.-P., and Bagnères, A.-G. (2018). When predator odour makes groups stronger: effects on behavioural and chemical adaptations in two termite species. *Ecol. Entomol.* 43, 513–524. doi: 10.1111/een.12529
- Mardia, K. V., Kent, T. J., and Bibby, J. M. (1979). *Multivariate Analysis*. London: Academic Press.
- Mizumoto, N., and Matsuura, K. (2013). Colony-specific architecture of shelter tubes by termites. *Insectes Soc.* 60, 525–530.
- Mizumoto, N., Bardunias, P. M., and Pratt, S. C. (2020). Complex relationship between tunneling patterns and individual behaviors in termites. *Am. Nat.* 196, 555–565. doi: 10.1086/711020
- Morales, M. (2017). *Sciplot: Scientific Graphing Functions For Factorial Designs*. Available online at: <https://cran.r-project.org/web/packages/sciplot/index.html> (accessed July 30, 2021).
- Myles, T. G. (1999). Review of secondary reproduction in termites (Insecta: Isoptera) with comments on its role in termite ecology and social evolution. *Sociobiology* 33, 1–43.
- Nobre, T., Nunes, L., and Bignell, D. E. (2007). Tunnel geometry of the subterranean termite *Reticulitermes grassei* (Isoptera: Rhinotermitidae) in response to sand bulk density and the presence of food. *Insect Sci.* 14, 511–518.
- Patel, J. S., Lee, S.-B., Chouvinc, T., and Su, N.-Y. (2020). Inferring termite colony size using wood consumption in subterranean termites (Blattodea: Rhinotermitidae) in laboratory-rearing conditions. *J. Econ. Entomol.* 113, 905–910. doi: 10.1093/jee/toz353
- Penn, D. J., and Frommen, J. G. (2010). “Kin recognition: an overview of conceptual issues, mechanisms and evolutionary theory,” in *Anim. Behav. Evol. Mech.*, ed. P. Kappeler (Berlin: Springer), 55–85.
- Perdereau, E., Bagnères, A.-G., Dupont, S., and Dedeine, F. (2010). High occurrence of colony fusion in a European population of the American termite *Reticulitermes flavipes*. *Insectes Soc.* 57, 393–402.
- Perdereau, E., Bagnères, A.-G., Vargo, E. L., Baudouin, G., Xu, Y., Labadie, P., et al. (2015). Relationship between invasion success and colony breeding structure in a subterranean termite. *Mol. Ecol.* 24, 2125–2142. doi: 10.1111/mec.13094
- Perdereau, E., Baudouin, G., Bankhead-Dronnet, S., Chevalier, Z., Zimmermann, M., Dupont, S., et al. (2019). Invasion dynamics of a termite, *reticulitermes flavipes*, at different spatial scales in France. *Insects* 10:30. doi: 10.3390/insects10010030
- Perdereau, E., Dedeine, F., Christidès, J.-P., Dupont, S., and Bagnères, A.-G. (2011). Competition between invasive and indigenous species: an insular case study of subterranean termites. *Biol. Invasions* 13, 1457–1470. doi: 10.1007/s10530-010-9906-5
- Pichon, A., Kutnik, M., Leniaud, L., Darrouzet, E., Châline, N., Dupont, S., et al. (2007). Development of experimentally orphaned termite worker colonies of two *Reticulitermes* species (Isoptera: Rhinotermitidae). *Sociobiology* 50, 1015–1034.
- Pitts-Singer, T. L., and Forschler, B. T. (2000). Influence of guidelines and passageways on tunneling behavior of *Reticulitermes flavipes* (Kollar) and *R. virginicus* (Banks) (Isoptera: Rhinotermitidae). *J. Insect Behav.* 13, 273–290.
- Rust, M. K., and Su, N.-Y. (2012). Managing social insects of urban importance. *Annu. Rev. Entomol.* 57, 355–375. doi: 10.1146/annurev-ento-120710-100634
- Scanes, C. G. (2018). “Invasive Species,” in *Anim. Hum. Soc.*, eds C. G. Scanes and S. R. Toukhsati (New York, NY: Elsevier), 413–426.
- Shults, P., Richardson, S., Eyer, P., Chura, M., Barreda, H., Davis, R. W., et al. (2021). Area-Wide elimination of subterranean termite colonies using a novaluron bait. *Insects* 12, 1–12. doi: 10.3390/insects12030192
- Su, N.-Y. (2013). How to become a successful invader? *Florida Entomol.* 96, 765–769.
- Su, N.-Y., and Lee, S.-H. (2009). Tunnel volume regulation and group size of subterranean termites (Isoptera: Rhinotermitidae). *Ann. Entomol. Soc. Am.* 102, 1158–1164. doi: 10.1603/008.102.0626
- Tian, L., Preisser, E. L., Haynes, K. F., and Zhou, X. (2017). Social buffering in a eusocial invertebrate: termite soldiers reduce the lethal impact of competitor cues on workers. *Ecology* 98, 952–960. doi: 10.1002/ecy.1746
- Traniello, J. F. A. (1989). Foraging strategies of ants. *Annu. Rev. Entomol.* 34, 191–210.
- Traniello, J. F. A., and Leuthold, R. H. (2000). “Behavior and ecology of foraging in termites,” in *Termit. Evol. Soc. Symbioses, Ecol.*, eds T. Abe, D. E. Bignell, and M. Higashi (Dordrecht: Springer Netherlands), 141–168.
- Van Kleunen, M., Schlaepfer, D. R., Glaetli, M., and Fischer, M. (2011). Preadapted for invasiveness: do species traits or their plastic response to shading differ between invasive and non-invasive plant species in their native range? *J. Biogeogr.* 38, 1294–1304.
- Vargo, E. L., and Husseneder, C. (2009). Biology of subterranean termites: insights from molecular studies of *Reticulitermes* and *Coptotermes*. *Annu. Rev. Entomol.* 54, 379–403. doi: 10.1146/annurev.ento.54.110807.090443
- Walther, G. R., Roques, A., Hulme, P. E., Sykes, M. T., Pyšek, P., Kühn, I., et al. (2009). Alien species in a warmer world: risks and opportunities. *Trends Ecol. Evol.* 24, 686–693. doi: 10.1016/j.tree.2009.06.008
- Yang, C.-C., Ascunce, M. S., Luo, L.-Z., Shao, J.-G., Shih, C.-J., and Shoemaker, D. (2012). Propagule pressure and colony social organization are associated with the successful invasion and rapid range expansion of fire ants in China. *Mol. Ecol.* 21, 817–833. doi: 10.1111/j.1365-294X.2011.05393.x

Conflict of Interest: The authors declare that the research was conducted in the absence of any commercial or financial relationships that could be construed as a potential conflict of interest.

Publisher’s Note: All claims expressed in this article are solely those of the authors and do not necessarily represent those of their affiliated organizations, or those of the publisher, the editors and the reviewers. Any product that may be evaluated in this article, or claim that may be made by its manufacturer, is not guaranteed or endorsed by the publisher.

Copyright © 2022 Pailler, Matte, Groseiller, Eyer, Ruhland and Lucas. This is an open-access article distributed under the terms of the Creative Commons Attribution License (CC BY). The use, distribution or reproduction in other forums is permitted, provided the original author(s) and the copyright owner(s) are credited and that the original publication in this journal is cited, in accordance with accepted academic practice. No use, distribution or reproduction is permitted which does not comply with these terms.