



**HAL**  
open science

# Characteristics and outcomes of acute respiratory distress syndrome related to COVID-19 in Belgian and French intensive care units according to antiviral strategies: the COVADIS multicentre observational study

David Grimaldi, Nadia Aissaoui, Gauthier Blonz, Giuseppe Carbutti, Romain Courcelle, Stephane Gaudry, Aurelie Gaultier, Alain D'hondt, Julien Higny, Geoffrey Horlait, et al.

## ► To cite this version:

David Grimaldi, Nadia Aissaoui, Gauthier Blonz, Giuseppe Carbutti, Romain Courcelle, et al.. Characteristics and outcomes of acute respiratory distress syndrome related to COVID-19 in Belgian and French intensive care units according to antiviral strategies: the COVADIS multicentre observational study. *Annals of Intensive Care*, 2020, 10 (1), pp.131. 10.1186/s13613-020-00751-y . hal-03640594

**HAL Id: hal-03640594**

**<https://hal.science/hal-03640594>**

Submitted on 13 Apr 2022

**HAL** is a multi-disciplinary open access archive for the deposit and dissemination of scientific research documents, whether they are published or not. The documents may come from teaching and research institutions in France or abroad, or from public or private research centers.

L'archive ouverte pluridisciplinaire **HAL**, est destinée au dépôt et à la diffusion de documents scientifiques de niveau recherche, publiés ou non, émanant des établissements d'enseignement et de recherche français ou étrangers, des laboratoires publics ou privés.

RESEARCH

Open Access



# Characteristics and outcomes of acute respiratory distress syndrome related to COVID-19 in Belgian and French intensive care units according to antiviral strategies: the COVADIS multicentre observational study

David Grimaldi<sup>1\*</sup> , Nadia Aissaoui<sup>2</sup>, Gauthier Blonz<sup>3</sup>, Giuseppe Carbutti<sup>4</sup>, Romain Courcelle<sup>5</sup>, Stephane Gaudry<sup>6</sup>, Aurelie Gaultier<sup>7</sup>, Alain D'hondt<sup>8</sup>, Julien Higny<sup>9</sup>, Geoffrey Horlait<sup>10</sup>, Sami Hraiech<sup>11,12</sup>, Laurent Lefebvre<sup>13</sup>, Francois Lejeune<sup>14</sup>, Andre Ly<sup>15</sup>, Michael Piagnerelli<sup>16</sup>, Bertrand Sauneuf<sup>17</sup>, Nicolas Serck<sup>18</sup>, Thibaud Soumagne<sup>19</sup>, Piotr Szychowiak<sup>20,21,22</sup>, Julien Textoris<sup>23,24</sup>, Benoit Vandembunder<sup>25</sup>, Christophe Vinsonneau<sup>26</sup> and Jean- Baptiste Lascarrou<sup>22,27\*</sup> for the COVADIS study group

## Abstract

**Background:** Limited data are available regarding antiviral therapy efficacy in most severe patients under mechanical ventilation for Covid-19-related acute respiratory distress syndrome (ARDS).

**Methods:** Comparison of antiviral strategies (none, hydroxychloroquine (OHQ), lopinavir/ritonavir (L/R), others (combination or remdesivir) in an observational multicentre cohort of patients with moderate-to-severe Covid-19 ARDS. The primary endpoint was the number of day 28 ventilator-free days (VFD). Patients who died before d28 were considered as having 0 VFD. The variable was dichotomized into “patients still ventilated or dead at day 28” versus “patients weaned and alive at day 28”.

**Results:** We analyzed 415 patients (85 treated with standard of care (SOC), 57 with L/R, 220 with OHQ, and 53 others). The median number of d28-VFD was 0 (IQR 0–13) and differed between groups ( $P=0.03$ ), SOC patients having the highest d28-VFD. After adjustment for age, sex, Charlson Comorbidity Index, PaO<sub>2</sub>/FiO<sub>2</sub> ratio and plateau pressure and accounting for center effect with a generalized linear mixed model, none of the antiviral strategies increased the chance of being alive and weaned from MV at day 28 compared to the SOC strategy (OR 0.48 CI95% (0.18–1.25); OR 0.96 (0.47–2.02) and OR 1.43 (0.53–4.04) for L/R, OHQ and other treatments, respectively). Acute kidney injury during ICU stay was frequent (55%); its incidence was higher in patients receiving lopinavir (66 vs 53%,  $P=0.03$ ). After adjustment for age, sex, BMI, chronic hypertension and chronic renal disease, the use of L/R was associated with an increased risk of renal replacement therapy (RRT). (OR 2.52 CI95% 1.16–5.59).

\*Correspondence: david.grimaldi@erasme.ulb.ac.be

<sup>1</sup> Soins Intensifs Hôpital Erasme, ULB, Route de Lennik 808, 1070 Bruxelles, Belgium

<sup>22</sup> CRICS-TriggerSEP research network, Tours, France

Full list of author information is available at the end of the article

**Conclusion:** In this multicentre observational study of moderate-to-severe Covid-19 ARDS patients, we did not observe any benefit among patients treated with OHQ or L/R compared with SOC. The use of L/R treatment was associated with an increased need for RRT.

*Take home message* Neither hydroxychloroquine nor lopinavir/ritonavir as COVID-19 antiviral treatment is associated with higher ventilator-free days at day 28 when compared with standard of care (no antiviral treatment) in ICU patients under invasive mechanical ventilation. Lopinavir/ritonavir is associated with an increased risk of renal replacement therapy requirement.

*Tweet* COVID-19: Insights from ARDS cohort: no signal of efficacy of any antiviral drugs. Lopinavir/ritonavir may be associated with need for RRT

**Keywords:** Renal replacement therapy, Remdesivir, Lopinavir, Ritonavir, Acute kidney injury, Hydroxychloroquine

## Introduction

Since December 2019, Coronavirus Disease 2019 (COVID-19) caused by severe acute respiratory syndrome coronavirus 2 (SARS-CoV-2) emerged in Wuhan, China, and rapidly spread throughout China, Asia and the world. COVID-19 can have different clinical presentations, but respiratory symptoms predominate especially in patients requiring intensive care unit (ICU) admission [1]. Respiratory symptoms mainly affect adults over 50 years of age, predominantly males with cardiovascular comorbidities [1, 2]. The respiratory features are characterized by severe hypoxemia, radiological ground glass opacities and especially crazy paving. Its evolution is prolonged with an aggravation phase 7–10 days after symptoms onset [3] leading to death between 3% of patients requiring conventional hospitalization [4] to 60% of patients requiring ICU [5].

Despite expert recommendations that were implemented quickly [6], the management was not based on high levels of evidence during the West European first wave (March–April 2020). The treatments applied varied from one country to another and from one center to another. Frantic rush towards the most efficient antiviral therapy has been ongoing since the epidemic started. First candidates were already developed molecules that demonstrated in vitro effects, mainly remdesivir [7], lopinavir/ritonavir [8] and hydroxychloroquine [9]. The last two were already on the market with an acceptable safety profile. However, they have not been used widely in critically ill patients and some potential unknown side effects may exist. Even though some randomized clinical trials have now been published for remdesivir [10], or for lopinavir/ritonavir alone [6] or in association [11], most of the patients in these trials were managed in conventional wards with few patients requiring mechanical ventilation and ICU.

We conducted an observational international multicentre study assessing patients suffering from moderate-to-severe COVID-19-related ARDS to detect a

possible signal of efficacy or deleterious effects of these antiviral therapies. Herein, we report the outcomes of these COVID-19 patients admitted to ICU and requiring invasive mechanical ventilation according to the chosen therapeutic strategy among several antivirals or standard of care.

We hypothesized that antiviral therapies may decrease the length of invasive ventilation, assessed by the number of ventilator-free days (VFD) at day 28.

## Patients and methods

This study complied with the STROBE guidelines [12].

### Study design and setting

The COVADIS project was observational and included 21 ICUs in France ( $n=12$ ) and Belgium ( $n=9$ ).

### Patient selection

Inclusion criteria were:

- Age older than 18 years,
- Moderate-to-severe ARDS according to the Berlin definition [13] ( $\text{PaO}_2/\text{FiO}_2$  ratio  $<200$  mmHg with a PEEP of at least 5 mmHg receiving invasive ventilation),
- Positive SARS-CoV-2 reverse transcriptase polymerase chain reaction (PCR) regardless of the sampling site (patient with negative PCR but chest CT scan with abnormalities such as crazy paving were not included).

Non-inclusion criteria were:

- Cardiac arrest before ICU admission,
- Extra corporeal membrane oxygenation (ECMO) requirement within first 24 h of ICU length,
- Gold class 3 or 4 chronic obstructive pulmonary disease, or home oxygen requirement.

### Data collection

For this observational multicenter study, all consecutive COVID-19 patients admitted to the participating centers between March 10, 2020 and April 15, 2020 were screened. Patients fulfilling inclusion and non-inclusion criteria were included. Each local investigator filled out an eCRF to collect data (Castor EDC, Amsterdam, The Netherlands). We recorded demographic data, known medical history and co-morbidities using the Charlson score [14], as well as history of chronic hypertension. We collected data regarding medical management during ICU stay including settings of mechanical ventilation after intubation, duration of mechanical ventilation, use of advanced therapies for acute respiratory failure (neuromuscular blocking agents, inhaled pulmonary vasodilators, prone-positioning, and extracorporeal membrane oxygenation), antiviral therapies and immunomodulatory agents (i.e., interleukin-6-receptor antagonists and corticosteroids) with time from onset of symptoms to initiation, occurrence of acute kidney injury (AKI), acute cardiac injury (defined as a rise in troponin level over 10 times the normal threshold or as the need for inotropes), and occurrence of pulmonary embolism and deep venous thrombosis.

### Definitions

Patients receiving antiviral therapy were defined as patients having received at least one complete day of respective antiviral therapy. As many candidates for specific antiviral treatment were under evaluation, our variable of interest was the use of antiviral treatment according to one of the pre-specified following category: none (standard of care), lopinavir/ritonavir (AbbVie, Rungis, France), hydroxychloroquine (Sanofi, Gentilly, France), and others (more than one antiviral treatment or remdesivir (Gilead, Foster City, USA) as it was not commercially available). More details regarding treatment doses and duration are provided in the Additional file 1: Table S1.

### Outcomes

#### Primary objective and endpoint

The primary objective was to assess the outcome of COVID-19 patients requiring invasive mechanical ventilation and ICU according to antiviral strategies.

The primary endpoint was the number of ventilator-free days at day 28.

Considering the absence of efficacy data regarding antiviral treatments in the setting of critically ill patients requiring invasive mechanical ventilation, we decided to

choose a composite outcome which included death and length of mechanical ventilation: number of ventilator-free days (VFD) at day 28 [15]. VFD at day 28 was determined as follows:

- VFDs = 0 if subject died within 28 days of mechanical ventilation,
- VFDs =  $28 - x$  if successfully liberated from ventilation  $x$  days after initiation,
- VFDs = 0 if the subject was mechanically ventilated for > 28 days.

The variable was dichotomized into “patients still ventilated or dead at day 28” (VFD = 0) vs “patients weaned and alive at day 28” (VFD > 0).

#### Secondary objectives and endpoints

The secondary objectives were to assess if the use of antiviral therapy improved the outcomes in terms of short-term survival, duration of mechanical ventilation, cardiac injury, acute kidney injury, requirement of renal replacement therapy and occurrence of thromboembolic disease.

The secondary endpoints were:

- Survival at day 14,
- Ventilator mode at day 14 according to predefined 4 categories: patient under volume/pressure assisted controlled or ECMO, pressure support mode, spontaneous breathing while extubated, death,
- Survival at day 28,
- Occurrence of AKI during the first 28 days after intubation, defined by a rise in serum creatinine of at least 50% as per KDIGO stage 1 definition [16], and classified as none, present without need for renal replacement therapy (RRT), present with need for RRT,
- Peak of creatinine during the first 28 days following intubation,
- Acute cardiac injury (defined as plasmatic troponin level upper than 10 times upper normal range or need for inotropes (dobutamine, epinephrine, milrinone, and/or levosimendan),
- Deep venous thrombosis and pulmonary embolism,
- Survival at ICU discharge.

#### Statistical analysis

Discrete data were described by their frequency expressed as a percentage. Numerical data were described by the mean and standard deviation.

Discrete data were compared using a Chi-square test or Fisher's exact test, as appropriate. Continuous normally distributed data were compared by ANOVA and continuous non-normal data by Kruskal–Wallis as appropriate.

A pre-planned multivariate analysis was performed to identify factors associated with day 28 VFD. We included in the model all the variables associated with day 28 VFD in univariate analysis with a  $P$  value  $< 0.10$  and variables with known prognostic value in ARDS. We forced in the model the type of antiviral strategy as categorical variable. Given (1) the non-normal distribution of day 28 VFD and (2) the median value at 0, according to pre-specified rules in the protocol, we discriminated the day 28 VFD variables in having at least one day of VFD or not, ie. being extubated and alive at day 28 or not. We performed then a generalized linear mixed model with center as random effect. SOC group was defined as the reference group for the antiviral strategy variable. Step-by-step backward selection was applied. The final model included only variables with  $P$  value below 0.05. Hosmer–Lemeshow test and visual inspection of residues were used to ensure the quality of the regression.

On reviewer demand and considering unforeseen high length-of-stay in ICU for COVID-19 patients when the study was designed, we analyzed the factors associated with survival at ICU discharge with univariate analysis and using a post hoc generalized linear mixed model as described above.

Post hoc generalized linear mixed models on the factors associated with AKI and with the need for RRT were performed adjusting antiviral molecule (administered in mono- or combined combination therapy) associated with AKI in univariate analysis ( $P < 0.10$ ) with age, sex, BMI, chronic hypertension and moderate-to-severe chronic renal failure.

No imputation strategy was used for missing data.  $P$  value  $< 0.05$  was considered significant.

All analyses were performed using Stata (version 16, StataCorp, College Station, TX, USA).

### Sample size

According to the paucity of data regarding the efficacy of antiviral treatments, we planned to include at least 250 patients to allow comparison of each antiviral treatment candidate.

### Role of the funding source

This study was not funded by any sources.

## Results

### Baseline characteristics (Table 1)

From March 10, 2020 to April 15, 2020, 415 patients were included in the study (Additional file 1: Figure S1). They were mostly male ( $n = 321$ , 77%) with mean body mass index ( $30 \pm 5$  kg/m<sup>2</sup>) and suffered from minimal comorbidities previous to COVID-19 as highlighted by Charlson score (1 [0–2]). The most frequent comorbidity was chronic hypertension ( $n = 235$  patients; 57%). Patients' demographic characteristics were similar across different treatment groups (Table 1).

### Antiviral strategies

The most frequently administered antiviral treatment was hydroxychloroquine monotherapy (OHQ) ( $n = 220$ ; 53%), followed by lopinavir/ritonavir monotherapy (L/R) ( $n = 57$ ; 14%). Other therapies (OTH) (combination or REM) were used in 53 patients (11 REM, 32 OHQ + L/R, 10 OHQ + REM). Eighty-five patients did not receive any supposedly active treatment against SARS-CoV2 (Standard of care, SOC). Of note, antiviral treatments were initiated after 8 [5–10] days of symptoms onset without difference between L/R, OHQ, or OTH groups ( $P = 0.18$ ).

### Primary objectives (Table 2 and Fig. 1)

Overall, the number of day 28 VFD was 0 [0–13] but significantly different across antiviral strategies ( $P = 0.03$ ).

The proportion of patients alive and extubated at day 28 were 53, 32, 39, 49% for SOC, L/R, OHQ and other groups ( $P = 0.04$ ). Compared to the SOC strategy, using an unadjusted analysis, L/R and OHQ treatment were associated with a lower chance to be alive and extubated at day 28 (OR 0.41 CI95% 0.20–0.83 and OR 0.57 CI95% 0.34–0.95), whereas other therapies were associated with a similar chance (OR 0.86 CI95% 0.43–1.70). However, after adjustment on age, sex, Charlson Comorbidity Index, PaO<sub>2</sub>/FiO<sub>2</sub> ratio and plateau pressure and accounting for the center effect, none of the antiviral strategies was significantly associated with a different chance of being alive and weaned from mechanical ventilation at day 28 compared to the SOC strategy (Fig. 1).

### Secondary objectives (Table 2)

Day 14, day 28 and ICU survival were similar across treatment groups. The post hoc multivariate analysis showed that after adjustment and taking into account the center effect with a generalized linear mixed model, none of the antiviral strategies was significantly associated with a different ICU survival compared to the SOC strategy (Additional file 1: Figure S2). The comparison

**Table 1** Patients' characteristics according to antiviral strategy

Total N=415	No antiviral N=85	Lopinavir ritonavir N=57	Hydroxychloroquine N=220	Other <sup>a</sup> N=53	P value <sup>b</sup>
France (vs Belgium), n (%)	77 (91)	56 (98)	96 (43.6)	15 (28)	<0.001
Age, mean ± SD	63 ± 11	63 ± 12	64 ± 10	62 ± 10	0.54
Gender, male, n (%)	64 (75)	46 (80)	169 (77)	42 (79)	0.87
Body mass index, mean ± SD N=84/57/215/53	30 ± 5	29 ± 5	30 ± 5	29 ± 5	0.47
History of chronic hypertension, n (%)	51 (60)	23 (40)	131 (59)	30 (57)	0.06
Charlson Comorbidity Index	1 (0–2)	1 (0–2)	1 (0–2)	0 (0–1)	0.02
0	33 (39)	17 (30)	88 (40)	33 (62)	0.005
1	16 (19)	19 (33)	65 (29)	8 (15)	
2 or more	36 (42)	21 (37)	67 (31)	12 (23)	
Duration between symptoms onset and initiation, median [IQR]	NA	8 [7–10]	7 [5–10]	8 [6–10]	0.18
<i>N</i> = -/49/192/46					
Macrolides, n (%)	34 (40)	47 (82)	158 (72)	21 (40)	<0.001
Including azithromycin, N=260 (%)	6 (18)	7 (15)	105 (67)	7 (33)	<0.001
Co-infection, n (%)	3 (4)	2 (4)	36 (16)	8 (15)	0.003
Tidal volume, (mL/kg of IBW), mean ± SD	6.2 ± 0.7	6.0 ± 0.5	6.4 ± 1	6.0 ± 0.7	0.004
<i>N</i> = 83/57/214/53					
Total PEEP (cmH <sub>2</sub> O), mean ± SD	11 ± 3	11 ± 3	12 ± 3	12 ± 3	0.11
Plateau pressure (cmH <sub>2</sub> O), mean ± SD	23 ± 4	23 ± 3	24 ± 4	22 ± 4	0.004
<i>N</i> = 71/45/202/49					
P/F ratio, mean ± SD	132 ± 39	143 ± 54	124 ± 54	117 ± 44	0.02
Driving pressure, mean ± SD	13 ± 4	11 ± 4	12 ± 4	10 ± 3	0.001
<i>N</i> = 71/45/202/49					
Neuromuscular blockade, n (%)	78 (92)	50 (88)	178 (81)	44 (83)	0.11
Inhaled nitric oxide, n (%)	6 (7)	4 (7)	37 (17)	4 (8)	0.03
Prone position, n (%)	62 (73)	39 (68)	189 (86)	43 (81)	0.006
Corticosteroids, n (%)	10 (15)	10 (18)	52 (24)	13 (25)	0.41
<i>N</i> = 393 <sup>c</sup>					
Inhibitor of II6, n (%)	1 (1)	0	9 (4)	0	0.12

<sup>a</sup> Including OHQ + L/R N=32; OHQ + REM N=10; REM N=11

<sup>b</sup> P value was calculated using Chi-2, ANOVA, Kruskal–Wallis as appropriate

<sup>c</sup> Some patients were included in a double blind RCT steroids vs placebo (NCT02517489)

ARDS acute respiratory distress syndrome, IBW ideal body weight, P/F ratio PaO<sub>2</sub>/FI<sub>2</sub> ratio, OHQ hydroxychloroquine, L/R lopinavir/ritonavir, REM remdesivir

between ICU survivors and non-survivors is provided in the Additional file 1: Table S2.

At day 14, the distribution of ventilator status was similar across treatment groups, most patients being under controlled mode (Table 2).

At day 28, AKI, pulmonary embolism and cardiac injury were present in 56%, 14% and 13% of the patients, respectively. As shown in Table 2, we observed a difference in AKI incidence between the different

groups ( $P=0.002$ ). The occurrence of RRT at day 28 was more frequent (39%) and the maximal creatinine level was higher in the lopinavir/ritonavir group compared to other groups (17%, 19% and 9% for SOC, OHQ and OTH, respectively).

**Table 2 Outcome according to antiviral treatment**

	No antiviral N=85	Lopinavir ritonavir N=57	Hydroxychloroquine N=220	Other <sup>a</sup> N=53	P <sup>b</sup> value
Ventilatory mode at day 14, n (%)					
Death					0.32
Controlled mode or under VV-	15 (18)	12 (21)	58 (27)	9 (17)	
ECMO	27 (32)	20 (35)	72 (33)	22 (42)	
Pressure support	16 (19)	12 (21)	45 (21)	14 (26)	
Extubated	27 (32)	13 (23)	44 (20)	8 (15)	
Alive at day 28, n (%)	62 (73)	35 (61)	140 (64)	38 (72)	0.30
VFD at day 28, median [IQR]	5 [0–15]	0 [0–11]	0 [0–12]	0 [0–9]	0.03
N=80/49/197/7/43					
Acute kidney injury, n (%)					
No	38 (45)	17 (30)	106 (48)	22 (42)	0.002
Yes without RRT	33 (39)	18 (32)	72 (33)	26 (49)	
Yes with RRT	14 (17)	22 (39)	41 (19)	5 (9)	
Peak of creatinine, median [IQR]	115 [84–209]	198 [95–432]	122 [80–316]	145 [88–245]	0.05
N=84/52/218/53					
Acute cardiac injury, n (%)	8 (9)	6 (10)	37 (17)	4 (8)	0.14
Pulmonary embolism, n (%)	11 (13)	6 (11)	32 (15)	10 (19)	0.78
Deep venous thrombosis, n (%)	7 (8)	8 (14)	20 (9)	4 (8)	0.62
ICU survival, n (%)	56 (67)	27 (51)	123 (57)	34 (64)	0.22
N=406					

<sup>a</sup> Other including HCQ + L/R N=32; HCQ + REM N=10; REM N=11

<sup>b</sup> P value was calculated using Chi-2, ANOVA, Kruskal–Wallis as appropriate

RRT renal replacement therapy, VFD ventilator-free days, VV-ECMO veno-venous extracorporeal membrane oxygenation

**Factors associated with AKI occurrence (Table 3, Fig. 2, Additional file 1: Figure S3)**

We compared patients’ characteristics according to the occurrence of AKI (Table 3). Use of L/R, either in mono- or combination therapy (N=89), was significantly more frequent in patients who further developed AKI (26 vs 16%; P=0.03). After adjustment for age, BMI, chronic hypertension and chronic renal failure, and taking into account the center effect, L/R was not significantly associated with AKI (Additional file 1: Figure S3), but was associated with RRT requirement (OR 2.52 CI95% 1.16–5.59, Fig. 2). In this analysis, OHQ treatment was not associated with AKI and RRT.

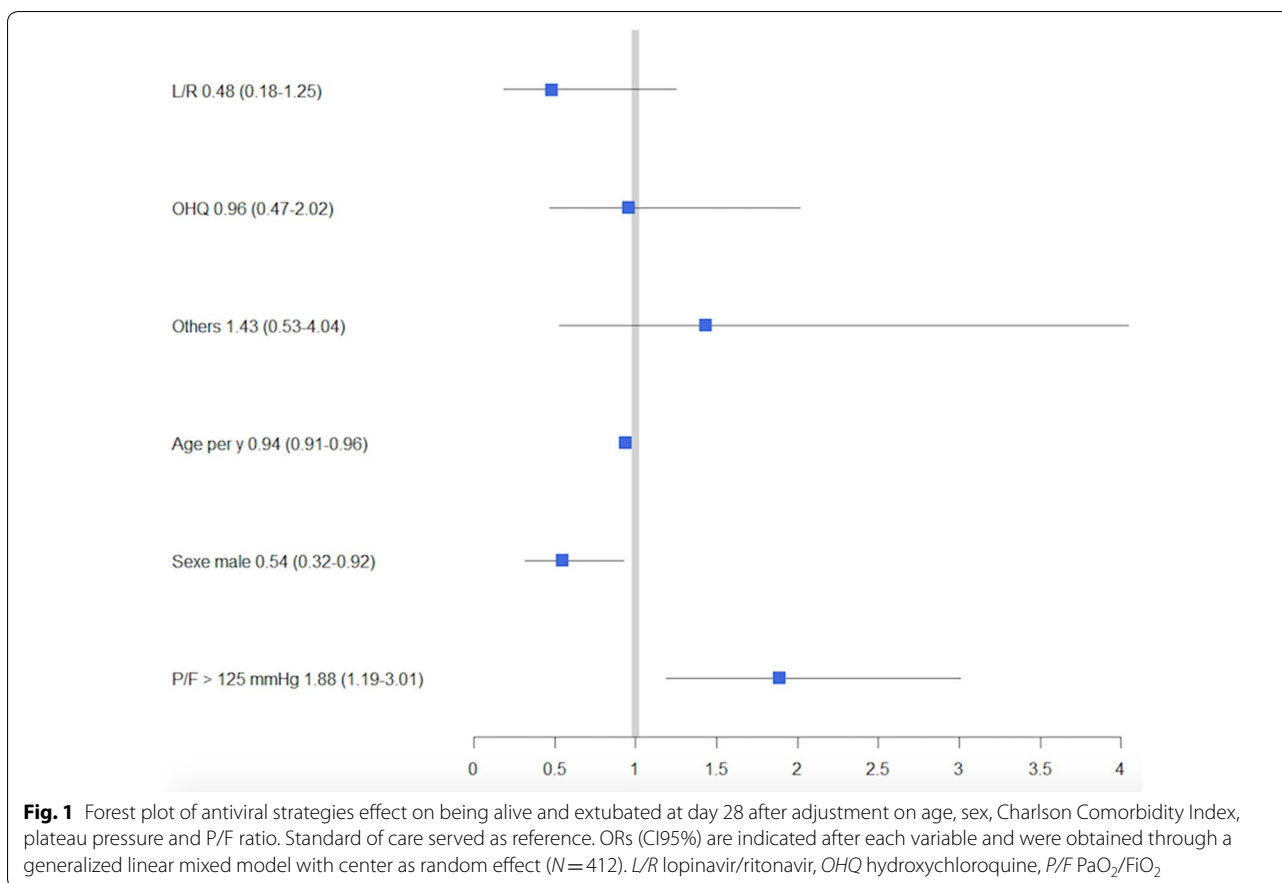
**Discussion**

In this observational, multicentre, binational, study assessing moderate-to-severe ARDS complicating COVID-19 and requiring ICU admission in France and Belgium, we did not observe any benefit of antiviral therapies (L/R, OHQ or combination therapies). There was an association between L/R treatment and the need for RRT. Of note, the low number of patients treated with

remdesivir precluded any conclusion regarding this specific therapy.

Our study is in line with previous findings regarding COVID-19 related ARDS in other countries [5, 17]. Patients were mostly overweight males between 50 and 70 years of age, with mostly mild cardiovascular comorbidities. Duration of symptoms before antiviral initiation was in accordance with previous studies: 13 [10–15] days in a study by Cao et al.[8].

Duration of ventilation was high in our cohort, exceeding by far the usual duration in ARDS patients (8 [4–16] days in the LUNG-SAFE cohort [18], with day 28 VFD=10 [0–22]). However, the day 28 mortality was 34% in our cohort, whereas it was 37% in moderate-to-severe ARDS in the LUNG-SAFE cohort. Of note, ICU mortality of COVID-19 ARDS was higher than day 28 mortality and exceeded 40%. In line with ARDS guidelines [19], physicians in this study set tidal volume near 6 mL/kg of IBW, PEEP at moderate–high level, used prone-positioning liberally and neuromuscular blocking agents [20]. We observed small but significant differences in PEEP level, tidal volume and plateau pressure across patients’ groups (possibly favored by the limited



dispersion of the value), but the clinical significance of these differences are uncertain.

Hence, although patients were not randomized, we think that the absence of association between any antiviral treatment and positive outcome (neither at day 28 nor at ICU discharge) deserves consideration. Conversely, we observed a higher day 28 VFD in the group of patients without any antiviral treatment, which raises concerns regarding the safety profile of such antiviral therapies. After adjustment for confounding variables including center effect, none of the strategies appeared significantly superior to SOC.

Since the start of the epidemic, several scientific data emerged on the absence of efficacy of antiviral candidates: no benefit with OHQ [21] and possible higher rate of cardiac events especially if combined with azithromycin [22], no benefit either with L/R in a small randomized controlled trial (RCT) not dedicated to critically ill patients [8]. Concurrently, results of a US trial investigating REM did show a potential benefit on time to recovery but only in patients in conventional wards with a mild disease severity [10]. To date, the only medication with mortality benefit is corticosteroids [23]. As clinical benefit seems unlikely for OHQ and L/R, we believe that only

the results of ongoing RCTs will determine if REM has a beneficial effect on outcomes in the subset of patients with ARDS requiring mechanical ventilation. Yet, we agree with current guidelines on antiviral therapy from IDSA [24], NIH [25], and French HCSP [26], to avoid compassionate use of these drugs, following the “first do not harm” rule [27].

Indeed, regarding potential side effects as predefined secondary outcomes, we observed that patients treated by L/R had higher occurrence of AKI and need for renal replacement therapy. The association between L/R treatment and RRT requirement was still present after adjustment for potential cofounders. Several reports in HIV patients indicated that L/R use was associated with an increased risk of chronic kidney disease [28] and acute tubular injury has been described with ritonavir [29]. Renal disease characterized by a proximal tubulopathy has been reported in COVID-19 [30] and has been described as a prognostic factor [31]. We reported a frequent occurrence of AKI in our cohort, in line with US data, with 20% of patients requiring RRT [17]. In our cohort, we observed a strong association between ICU mortality and AKI, although we could not determine if AKI was a marker of a more severe systemic



**Table 3 Associated factors with AKI within 28 days after intubation**

<b>N=414</b>	<b>AKI – N=183</b>	<b>AKI + N=231</b>	<b>P value<sup>a</sup></b>
Age, mean ± SD	61 ± 11	65 ± 10	< 0.001
Gender, men, n (%)	133 (73)	187 (81)	0.05
BMI, kg/m <sup>2</sup> , mean ± SD	28.9 ± 5	30.4 ± 5	0.006
Hypertension, n (%)	83 (45)	151 (65)	< 0.001
Uncomplicated diabetes mellitus, n (%)	34 (19)	46 (20)	0.73
Complicated diabetes mellitus, n (%)	7 (4)	27 (12)	0.004
Chronic kidney disease, n (%)	5 (3)	28 (12)	< 0.001
Peripheral artery disease, n (%)	4 (2)	21 (9)	0.003
History of myocardial infarction, n (%)	10 (6)	27 (12)	0.04
Charlson Comorbidity Index, median [IQR]	0 (0–1)	1 (0–2)	< 0.001
= 0	92 (50)	79 (34)	< 0.001
= 1	53 (29)	54 (23)	
≥ 2	38 (21)	98 (42)	
PEEP (cmH <sub>2</sub> O), mean ± SD	11.3 ± 3	11.6 ± 3	0.32
Plateau pressure (cmH <sub>2</sub> O), mean ± SD	23.5 ± 4	23.7 ± 4	0.60
<i>N</i> = 159/207			
P/F, mean ± SD	130 ± 54	124 ± 47	0.29
NO, n (%)	21 (12)	30 (13)	0.64
Hydroxychloroquine, n (%)	124 (68)	137 (59)	0.08
Lopinavir/ritonavir, n (%)	30 (16)	59 (26)	0.03
Remdesivir, n (%)	9 (5)	12 (5)	0.90
Corticosteroids <sup>b</sup> , n (%)	35 (21)	50 (23)	0.61
<i>N</i> = 221/171			
Macrolides	118 (65)	141 (61)	0.47
Co-infection	19 (10)	30 (13)	0.42
Day 14 ventilatory mode			< 0.001
Death	21 (12)	73 (32)	
Controlled or VV-ECMO	64 (35)	77 (33)	
Pressure support	40 (22)	47 (20)	
Extubated	58 (32)	34 (15)	
Peak creatinine until day 28, median [IQR]	80 [64–95]	253 [147–436]	< 0.001
<i>n</i> = 181/205			
Cardiac injury, n (%)	10 (6)	45 (20)	< 0.001
Alive at D28, n (%)	145 (79)	129 (56)	< 0.001
Day 28 VFD, median [IQR]	8 (0–16)	0 (0–2)	< 0.001
ICU survival, n (%)	136 (75)	104 (46)	< 0.001
<i>N</i> = 181/225			

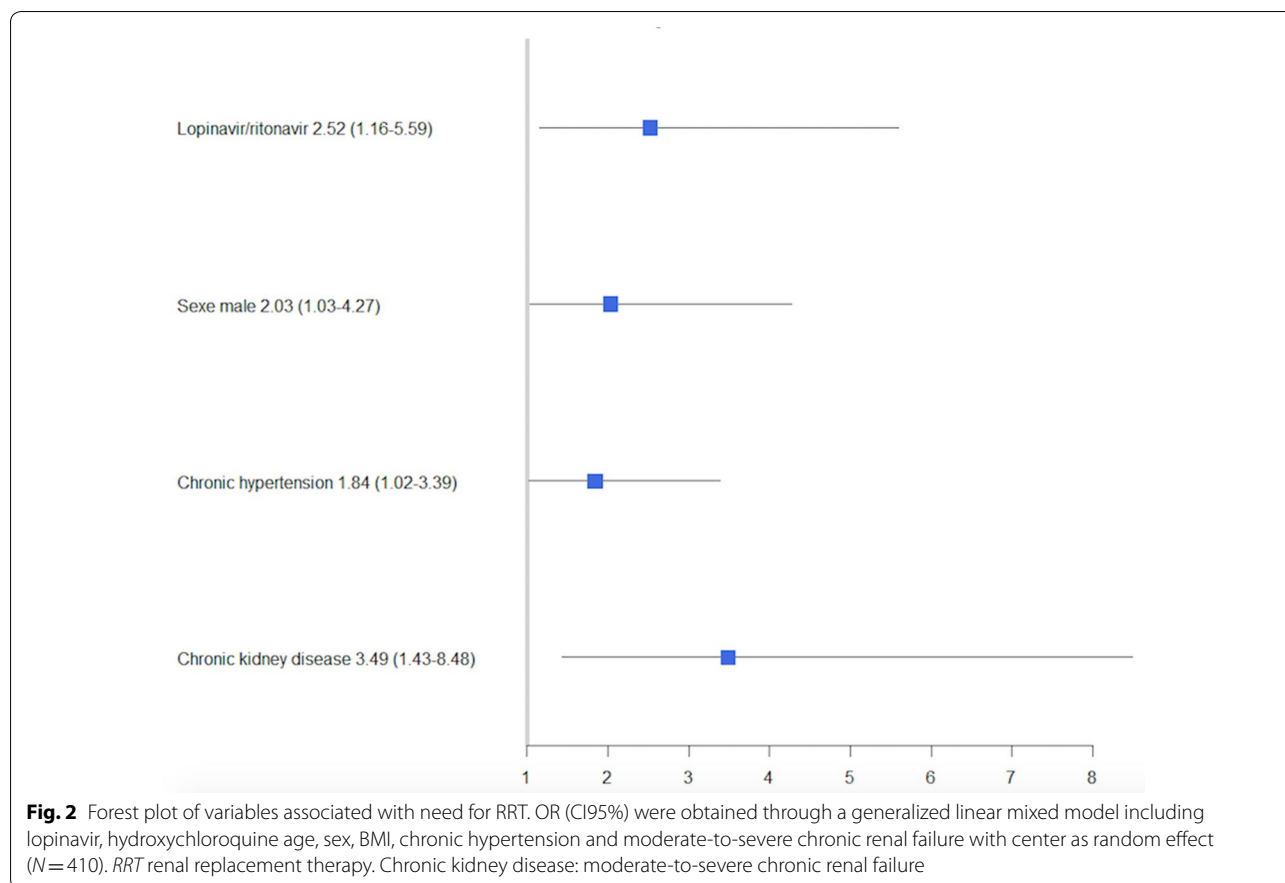
<sup>a</sup> P value was calculated by Fisher exact test, t test or Mann–Whitney test as appropriate

<sup>b</sup> Some patients were included in a RCT steroids vs placebo

AKI acute kidney injury was defined as at least a rise of at least 1.5 times in serum creatinine, BMI body mass index, SD standard deviation, P/F: PaO<sub>2</sub>/FiO<sub>2</sub> ratio, NO inhaled nitric oxide, VV-ECMO veno-venous extracorporeal mobile assistance, VFD ventilator-free days

viral sepsis or a causal determinant of survival. This is consistent with a previous report [32]. Interestingly, cardiac injury, but not pulmonary embolism [33], was also associated with increased mortality.

To our best knowledge, no study dedicated to COVID-19 patients requiring ICU analyzed the factors associated with COVID-19 AKI. In our cohort, we observed that, besides treatment with L/R, age, gender, BMI, renal and cardiovascular comorbidities were independently



associated with AKI. Higher incidence of AKI may be explained either by a previous nephron loss and/or by a specific susceptibility of these patients to SARS-CoV2 through a greater expression of ACE-2 in podocytes and proximal straight tubule cells [34]. Another possible hypothesis is the occurrence of hypovolemia related to L/R-associated diarrhea and “dry lung” strategy promoted for patients with severe ARDS, although usual hemodynamic monitoring in participating ICUs did not support this hypothesis. Last, recent reports highlighted increased plasma level of lopinavir in patients with COVID-19 compared to HIV-infected patients [35, 36]. Our study was not designed to favor one of these speculative hypotheses. Absence of independent association between lopinavir/ritonavir and AKI after adjustment can be related to overfitting and/or to our sensitive threshold for definition of AKI, highlighted by high rates of AKI as compared to other cohorts with yet similar rate of RRT in groups not receiving L/R [17, 37]. Nevertheless, L/R was independently associated with RRT requirement, which is a worrying finding.

Finally, our observational study has some limits: the patients were not randomized so that we cannot exclude indication bias although collected variables suggested

high similarity across treatment strategies. Non-measured confusion biases may exist as well. We did not collect any severity scores, but these scores have been proposed to compare patients with different diseases in the ICU. Of note, we collected Charlson Comorbidity Index, which, associated with gender and age, has been shown to predict mortality with good accuracy [38]. We have also some missing data, which can impact on our results. Given the time constraints during the COVID-19 surge, we strongly limited the number of collected variables so that we were not able to report data regarding organ failures at ICU admission or daily ventilator settings. Our limits are similar to many previous reported studies designed in the same conditions [39]. Our primary outcome might be criticized and might suffer from some drawbacks [40]. Last, some of these patients may have been included in other studies.

**Conclusion**

In moderate-to-severe ARDS COVID-19 patients, we did not observe any association between hydroxychloroquine or lopinavir/ritonavir use and ventilator-free days nor ICU mortality, as compared to no antiviral treatment. We observed an independent association

between lopinavir/ritonavir and the need for RRT. Our data do not support the use of any of these drugs until results from RCTs dedicated to ICU patients are available.

## Supplementary information

**Supplementary information** accompanies this paper at <https://doi.org/10.1186/s13613-020-00751-y>.

**Additional file 1: Table S1.** Antiviral standard procedure in the participating centers. **Table S2.** Associated factors with ICU survival. **Figure S1.** Flow chart of the study. **Figure S2.** Forest plot of antiviral strategies effect on ICU survival in a mixed multivariate model. **Figure S3.** Forest plot of variables associated with AKI in a mixed multivariate model.

## Acknowledgements

We thank Mariana Ismael for Castor EDC (Amsterdam, The Netherlands) for technical support to design eCRF.

We thank Dr Lemarie, MD, for assistance in preparing and reviewing the manuscript.

DG and JBL had full access to all the data and had final responsibility for the decision to submit for publication.

We thank COVADIS study group investigators:

Patrick Biston, Intensive Care, CHU-Charleroi, Marie Curie, Université Libre de Bruxelles, 140, Chaussée de Bruxelles, 6042-Charleroi, Belgium

Gwenhael Colin, Médecine Intensive Réanimation, CHD Vendée, site de la Roche sur Yon, Les Oudairies, 85000 La Roche Sur Yon, France

Oriane de Maere, Department of Intensive Care, CHR Mons-Hainaut, Mons, Belgium

Nathan Ebstein, Réanimation médico-chirurgicale CHU Avicennes, Université Sorbonne Paris Nord, Bobigny, France

Stephan Ehrmann, Médecine Intensive Réanimation, CHRU Tours, Tours, France

Frederic Foret, Unité de soins intensifs, CHU Dinant Godinne, site Dinant, Belgium

Lionel Haentjens, Unités de soins intensifs CHU Ambroise Paré, Mons, Belgium

Thibault Helbert, Réanimation polyvalente Centre Hospitalier du pays d'Aix, Aix en Provence, France

Jean-Baptiste Mesland, Department of Intensive Care, centres hospitaliers de Jolimont, La Louvière, Belgium

Celine Monard, Service de réanimation, Hospices Civils de Lyon, 5 Place D'Arsonval, Lyon, France

Nicolas Mongardon, Service d'anesthésie-réanimation chirurgicale Unité de réanimation chirurgicale polyvalente Hôpitaux Universitaires Henri Mondor, Créteil, France

Gregoire Ottavy, Médecine Intensive Réanimation, CHU Nantes, 30 Boulevard Jean Monnet, 44093 Nantes Cedex 9, France

Thomas Pasau, CHU UCL Namur, site Godinne, Av. Dr G. Therasse 1 5530, Yvoir, Belgium

Gael Piton, Médecine Intensive Réanimation, CHU Besançon, 3 Boulevard FLEMING, 25030 Besançon, France

Ester Ponzetto, Unité de soins intensifs, Clinique Saint Pierre, Ottignies, Belgium

Caroline Sejourne, Service de Médecine Intensive Réanimation, CH Germon et Gauthier, Béthune, France

Morgane Snacken, Soins Intensifs, Hôpital Erasme, ULB, Route de Lennik 808, 1070 Bruxelles, Belgium

Xavier Souloy, Réanimation—Médecine Intensive, Centre Hospitalier Public du Cotentin, BP208, 50102 Cherbourg-en-Cotentin, France

Aude Sylvestre, Médecine Intensive Réanimation, Assistance Publique—Hôpitaux de Marseille, Hôpital Nord, 13015, Marseille, France

Nicolas Tartrat, Groupe des anesthésistes réanimateurs, Hôpital Privé d'Antony, Antony, France

Cedric Vanbrussel, Unité de soins intensifs, Clinique Notre Dame de Grâce, Gosselies, Belgium

## Authors' contributions

DG and JBL were responsible for the study concept and design. All authors: acquisition of the data. DG, JBL, NA, SG, CV, JT, AG: analysis and interpretation of the data. DG and JBL: drafting of the manuscript. All authors: critical revision of the manuscript for important intellectual content. The corresponding author had full access to all the data in the study and final responsibility for the decision to submit for publication. All authors read and approved the final manuscript.

## Funding

No funding.

## Availability of data and materials

The database of the study will be freely accessible online within 3 months after publication upon reasonable request to corresponding author.

## Ethics approval and consent to participate

This study was approved by appropriate regulatory committees in France (CNIL 2217488) and in Belgium (EC n°P2020/253) in accordance with national regulations. Each patient was informed about the study. In case of incompetency, next of kin was informed. The requirement for written informed consent was waived.

## Consent for publication

Not applicable.

## Competing interests

JT is a part-time employee of bioMérieux, an IVD company, and Hospices Civils de Lyon, a university hospital. Other authors have no disclosures.

## Author details

<sup>1</sup> Soins Intensifs Hôpital Erasme, ULB, Route de Lennik 808, 1070 Bruxelles, Belgium. <sup>2</sup> Médecine Intensive Réanimation, Hôpital Européen Georges Pompidou, Paris centre U 970 PARCC, Paris, France. <sup>3</sup> District Hospital Center, Boulevard Stéphane Moreau, Médecine Intensive Réanimation, 85000 La Roche Sur Yon, France. <sup>4</sup> Unité de Soins Intensifs, CHR Mons-Hainaut, Mons, Belgium. <sup>5</sup> Unité de Soins Intensifs, Centres Hospitaliers de Jolimont, La Louvière, Belgium. <sup>6</sup> Réanimation médico-chirurgicale CHU Avicennes, Université Sorbonne Paris Nord, Bobigny, France. <sup>7</sup> Plateforme de Méthodologie Et Biostatistique, CHU Nantes, 1 Places Alexis Ricordeau, 44093 Nantes Cedex 9, France. <sup>8</sup> Unité de Soins Intensifs, CHU Ambroise Paré, Mons, Belgium. <sup>9</sup> Unité de Soins Intensifs, CHU Dinant Godinne, site Dinant, Dinant, Belgium. <sup>10</sup> Unité de Soins Intensifs, CHU Dinant Godinne, site Godinne, Godinne, Belgium. <sup>11</sup> Médecine Intensive Réanimation, Assistance Publique - Hôpitaux de Marseille, Hôpital Nord, 13015 Marseille, France. <sup>12</sup> Centre D'Etudes Et de Recherches Sur Les Services de Santé Et qualité de Vie EA 3279, Aix- Faculté de médecine, Marseille Université, 13005 Marseille, France. <sup>13</sup> Réanimation Polyvalente Centre Hospitalier du Pays D'Aix, Aix en Provence, France. <sup>14</sup> Unité de Soins Intensifs, Clinique Notre Dame de Grâce, Gosselies, Belgium. <sup>15</sup> Service d'anesthésie-réanimation chirurgicale Unité de réanimation chirurgicale polyvalente, Hôpitaux Universitaires Henri Mondor, Créteil, France. <sup>16</sup> Intensive Care, CHU-Charleroi, Marie Curie, Université Libre de Bruxelles, 140, chaussée de Bruxelles, 6042 Charleroi, Belgium. <sup>17</sup> Réanimation - Médecine Intensive, Centre Hospitalier Public du Cotentin, BP208, 50102 Cherbourg-en-Cotentin, France. <sup>18</sup> Unité de soins intensifs, Clinique Saint Pierre, Ottignies, Belgium. <sup>19</sup> Médecine Intensive Réanimation, CHU Besançon, 3 Boulevard FLEMING, 25030 Besançon, France. <sup>20</sup> Médecine Intensive Réanimation, CHRU Tours, Tours, France. <sup>21</sup> INSERM CIC 1415, CHRU Tours, Tours, France. <sup>22</sup> CRICS-TriggerSEP research network, Tours, France. <sup>23</sup> Service de réanimation, Hospices Civils de Lyon, 5 Place D'Arsonval, Lyon, France. <sup>24</sup> Laboratoire Commun de Recherche bioMérieux-Hospices Civils de Lyon-Université de Lyon 1, EA7426 P13 Lyon, France. <sup>25</sup> Groupe des anesthésistes réanimateurs, Hôpital Privé d'Antony, Antony, France. <sup>26</sup> Service de Médecine Intensive Réanimation Unité de Sevrage Ventilatoire et Réhabilitation Centre Hospitalier de BETHUNE, 27 Rue Delbecq, 62660 Beuvry, France. <sup>27</sup> Médecine Intensive Réanimation, CHU Nantes, 30 Boulevard Jean Monnet, 44093 Nantes Cedex 9, France.

Received: 9 June 2020 Accepted: 24 September 2020

Published online: 06 October 2020

## References

- Zhou F, et al. Clinical course and risk factors for mortality of adult inpatients with COVID-19 in Wuhan, China: a retrospective cohort study. *Lancet*. 2020;395(10229):1054–62.
- Guan W-J, et al. Clinical characteristics of coronavirus disease 2019 in China. *N Engl J Med*. 2020;382:1708.
- Wu C, et al. Risk factors associated with acute respiratory distress syndrome and death in patients with coronavirus disease 2019 pneumonia in Wuhan, China. *JAMA Intern Med*. 2020;180:934.
- Chen R, et al. Risk factors of fatal outcome in hospitalized subjects with coronavirus disease 2019 from a Nationwide Analysis in China. *Chest*. 2020;158:97.
- Yang X, et al. Clinical course and outcomes of critically ill patients with SARS-CoV-2 pneumonia in Wuhan, China: a single-centered, retrospective, observational study. *Lancet Respir Med*. 2020;8(5):475–81.
- Alhazzani W, et al. Surviving Sepsis Campaign: guidelines on the management of critically ill adults with Coronavirus Disease 2019 (COVID-19). *Intensive Care Med*. 2020;46(5):854–87.
- Grein J, et al. Compassionate Use of Remdesivir for Patients with Severe Covid-19. *N Engl J Med*. 2020;382(24):2327–36.
- Cao B, et al. A trial of lopinavir-ritonavir in adults hospitalized with severe Covid-19. *N Engl J Med*. 2020;382(19):1787–99.
- Taccone FS, Gorham J, Vincent JL. Hydroxychloroquine in the management of critically ill patients with COVID-19: the need for an evidence base. *Lancet Respir Med*. 2020;8(6):539–41.
- Beigel JH, et al. Remdesivir for the treatment of Covid-19—preliminary report. *N Engl J Med*. 2020. <https://doi.org/10.1056/NEJMoa2007764>.
- Hung IF-N, et al. Triple combination of interferon beta-1b, lopinavir-ritonavir, and ribavirin in the treatment of patients admitted to hospital with COVID-19: an open-label, randomised, phase 2 trial. *Lancet*. 2020;395:1695.
- von Elm E, et al. The Strengthening of Reporting of Observational Studies in Epidemiology (STROBE) statement: guidelines for reporting observational studies. *Lancet*. 2007;370(9596):1453–7.
- The A.D.T.F., Acute respiratory distress syndrome: the Berlin definition. *JAMA*. 307(23): 2526–2533.
- Charlson ME, et al. A new method of classifying prognostic comorbidity in longitudinal studies: development and validation. *J Chronic Dis*. 1987;40(5):373–83.
- Schoenfeld DA, Bernard GR. Statistical evaluation of ventilator-free days as an efficacy measure in clinical trials of treatments for acute respiratory distress syndrome. *Crit Care Med*. 2002;30(8):1772–7.
- Levey AS, Levin A, Kellum JA. Definition and classification of kidney diseases. *Am J Kidney Dis*. 2013;61(5):686–8.
- Ziehr DR, et al. Respiratory Pathophysiology of mechanically ventilated patients with COVID-19: A Cohort Study. *Am J Respir Crit Care Med*. 2020;201(12):1560–4.
- Bellani G, et al. Epidemiology, patterns of care, and mortality for patients with acute respiratory distress syndrome in intensive care units in 50 countries. *JAMA*. 2016;315(8):788–800.
- Papazian L, et al. Formal guidelines: management of acute respiratory distress syndrome. *Ann Intensive Care*. 2019;9(1):69.
- Courcelle R, Gaudry S, Serck N, Blonz G, Lascarrou J-B, Grimaldi D, on behalf the COVADIS study group. Neuromuscular blocking agents (NMBA) for COVID-19 acute respiratory distress syndrome: a multicenter observational study. *Crit Care*. 2020;24(1):446.
- Cavalcanti AB, et al. Hydroxychloroquine with or without Azithromycin in Mild-to-Moderate Covid-19. *N Engl J Med*. 2020. <https://doi.org/10.1056/NEJMoa2019014>.
- Rosenberg ES, et al. Treatment With hydroxychloroquine or azithromycin with in-hospital mortality in patients with COVID-19 in New York State. *JAMA*. 2020;323(24):2493–502.
- RECOVERY Collaborative Group, Peter Horby P, Lim WS, Emberson JR. Dexamethasone in hospitalized patients with Covid-19—preliminary report. *N Engl J Med*. 2020. <https://doi.org/10.1056/NEJMoa2021436>.
- IDSA. <https://www.idsociety.org/public-health/COVID-19-Resource-Center/>.
- NIH. <https://www.covid19treatmentguidelines.nih.gov/antiviral-therapy/>.
- HCSP. <https://www.hcsp.fr/explore.cgi/avisrapportsdomaine?clefr=866>.
- Shelton JD. A piece of my mind: the harm of “first, do no harm”. *JAMA*. 2000;284(21):2687–8.
- Mocroft A, et al. Cumulative and current exposure to potentially nephrotoxic antiretrovirals and development of chronic kidney disease in HIV-positive individuals with a normal baseline estimated glomerular filtration rate: a prospective international cohort study. *Lancet HIV*. 2016;3(1):e23–32.
- Shafi T, et al. Ritonavir-induced acute kidney injury: kidney biopsy findings and review of literature. *Clin Nephrol*. 2011;75(1):60–4.
- Su H, et al. Renal histopathological analysis of 26 postmortem findings of patients with COVID-19 in China. *Kidney Int*. 2020;98(1):219–27.
- Cheng Y, et al. Kidney disease is associated with in-hospital death of patients with COVID-19. *Kidney Int*. 2020;97(5):829–38.
- McNicholas BA, et al. Impact of early acute kidney injury on management and outcome in patients with acute respiratory distress syndrome: a secondary analysis of a Multicenter Observational Study. *Crit Care Med*. 2019;47(9):1216–25.
- Soumagne T, et al. Factors Associated with pulmonary embolism among coronavirus disease 2019 acute respiratory distress syndrome: A Multi-center Study among 375 patients. *Crit Care Explor*. 2020;2(7):e0166.
- Pan XW, et al. Identification of a potential mechanism of acute kidney injury during the COVID-19 outbreak: a study based on single-cell transcriptome analysis. *Intensive Care Med*. 2020;46(6):1114–6.
- Gregoire M, et al. Lopinavir pharmacokinetics in COVID-19 patients. *J Antimicrob Chemother*. 2020;75:2702.
- Lê MP, et al. Pharmacokinetics of lopinavir/ritonavir oral solution to treat COVID-19 in mechanically ventilated ICU patients. *J Antimicrob Chemother*. 2020;75:2657.
- Karagiannidis C, et al. Case characteristics, resource use, and outcomes of 10,021 patients with COVID-19 admitted to 920 German hospitals: an observational study. *Lancet Respir Med*. 2020;8:853.
- Christensen S, et al. Comparison of Charlson comorbidity index with SAPS and APACHE scores for prediction of mortality following intensive care. *Clin Epidemiol*. 2011;3:203–11.
- Ferrando C, et al. Clinical features, ventilatory management, and outcome of ARDS caused by COVID-19 are similar to other causes of ARDS. *Intensive Care Med*. 2020. <https://doi.org/10.1007/s00134-020-06192-2>.
- Bodet-Contentin L, et al. Ventilator-Free Day Outcomes Can Be Misleading. *Crit Care Med*. 2018;46(3):425–9.

### Publisher's Note

Springer Nature remains neutral with regard to jurisdictional claims in published maps and institutional affiliations.