



HAL
open science

Association of Variants in the SPTLC1 Gene With Juvenile Amyotrophic Lateral Sclerosis

Janel Johnson, Ruth Chia, Danny Miller, Rachel Li, Ravindran Kumaran,
Yevgeniya Abramzon, Nada Alahmady, Alan Renton, Simon Topp, J Raphael
Gibbs, et al.

► **To cite this version:**

Janel Johnson, Ruth Chia, Danny Miller, Rachel Li, Ravindran Kumaran, et al.. Association of Variants in the SPTLC1 Gene With Juvenile Amyotrophic Lateral Sclerosis. *JAMA neurology*, 2021, 78 (10), pp.1236. 10.1001/jamaneurol.2021.2598 . hal-03638943

HAL Id: hal-03638943

<https://hal.science/hal-03638943>

Submitted on 10 Jun 2022

HAL is a multi-disciplinary open access archive for the deposit and dissemination of scientific research documents, whether they are published or not. The documents may come from teaching and research institutions in France or abroad, or from public or private research centers.

L'archive ouverte pluridisciplinaire **HAL**, est destinée au dépôt et à la diffusion de documents scientifiques de niveau recherche, publiés ou non, émanant des établissements d'enseignement et de recherche français ou étrangers, des laboratoires publics ou privés.



Distributed under a Creative Commons Attribution 4.0 International License

Association of Variants in the *SPTLC1* Gene With Juvenile Amyotrophic Lateral Sclerosis

Janel O. Johnson, PhD; Ruth Chia, PhD; Danny E. Miller, MD, PhD; Rachel Li, MD; Ravindran Kumaran, PhD; Yevgeniya Abramzon, BSc; Nada Alahmady, PhD; Alan E. Renton, PhD; Simon D. Topp, PhD; J. Raphael Gibbs, PhD; Mark R. Cookson, PhD; Marya S. Sabir, BSc; Clifton L. Dalgard, PhD; Claire Troakes, PhD; Ashley R. Jones, PhD; Aleksey Shatunov, PhD; Alfredo Iacoangeli, PhD; Ahmad Al Khleifat, PhD; Nicola Ticozzi, MD, PhD; Vincenzo Silani, MD; Cinzia Gellera, PhD; Ian P. Blair, PhD; Carol Dobson-Stone, PhD; John B. Kwok, PhD; Emily S. Bonkowski, ScM; Robin Palvadeau, MSc; Pentti J. Tienari, MD; Karen E. Morrison, MD; Pamela J. Shaw, MD; Ammar Al-Chalabi, PhD; Robert H. Brown Jr, MD, PhD; Andrea Calvo, PhD; Gabriele Mora, PhD; Hind Al-Saif, MD; Marc Gotkine, MBBS; Fawn Leigh, MD; Irene J. Chang, MD; Seth J. Perlman, MD; Ian Glass, MB ChB, MD; Anna I. Scott, PhD; Christopher E. Shaw, MD; A. Nazli Basak, PhD; John E. Landers, PhD; Adriano Chiò, PhD; Thomas O. Crawford, PhD; Bradley N. Smith, PhD; Bryan J. Traynor, MD, PhD; and the FALS Sequencing Consortium; American Genome Center; International ALS Genomics Consortium; and ITALSGEN Consortium

Supplemental content

IMPORTANCE Juvenile amyotrophic lateral sclerosis (ALS) is a rare form of ALS characterized by age of symptom onset less than 25 years and a variable presentation.

OBJECTIVE To identify the genetic variants associated with juvenile ALS.

DESIGN, SETTING, AND PARTICIPANTS In this multicenter family-based genetic study, trio whole-exome sequencing was performed to identify the disease-associated gene in a case series of unrelated patients diagnosed with juvenile ALS and severe growth retardation. The patients and their family members were enrolled at academic hospitals and a government research facility between March 1, 2016, and March 13, 2020, and were observed until October 1, 2020. Whole-exome sequencing was also performed in a series of patients with juvenile ALS. A total of 66 patients with juvenile ALS and 6258 adult patients with ALS participated in the study. Patients were selected for the study based on their diagnosis, and all eligible participants were enrolled in the study. None of the participants had a family history of neurological disorders, suggesting de novo variants as the underlying genetic mechanism.

MAIN OUTCOMES AND MEASURES De novo variants present only in the index case and not in unaffected family members.

RESULTS Trio whole-exome sequencing was performed in 3 patients diagnosed with juvenile ALS and their parents. An additional 63 patients with juvenile ALS and 6258 adult patients with ALS were subsequently screened for variants in the *SPTLC1* gene. De novo variants in *SPTLC1* (p.Ala20Ser in 2 patients and p.Ser331Tyr in 1 patient) were identified in 3 unrelated patients diagnosed with juvenile ALS and failure to thrive. A fourth variant (p.Leu39del) was identified in a patient with juvenile ALS where parental DNA was unavailable. Variants in this gene have been previously shown to be associated with autosomal-dominant hereditary sensory autonomic neuropathy, type 1A, by disrupting an essential enzyme complex in the sphingolipid synthesis pathway.

CONCLUSIONS AND RELEVANCE These data broaden the phenotype associated with *SPTLC1* and suggest that patients presenting with juvenile ALS should be screened for variants in this gene.

Author Affiliations: Author affiliations are listed at the end of this article.

Group Information: The FALS Sequencing Consortium, American Genome Center, International ALS Genomics Consortium, and ITALSGEN Consortium authors appear at the end of the article.

Corresponding Author: Bryan J. Traynor, MD, PhD, Laboratory of Neurogenetics, National Institute on Aging, National Institutes of Health, 35 Convent Dr, Room 1A-213, Bethesda, MD 20892 (bryan.traynor@nih.gov).

JAMA Neurol. 2021;78(10):1236-1248. doi:10.1001/jamaneurol.2021.2598
Published online August 30, 2021.

Amyotrophic lateral sclerosis (ALS) is a relatively common neurological disorder characterized by progressive paralysis and death from respiratory failure. The vast majority of cases occur in individuals older than 40 years.¹ In contrast, juvenile ALS (defined as an age of onset less than 25 years) is a rare form of motor neuron disease.² These early-onset cases are characterized by slow progression and a variable phenotype that often makes accurate diagnosis challenging.²

Considerable progress has been made in unravelling the genetic architecture underlying ALS, but much remains to be understood about this condition.³ Juvenile ALS is thought to be more frequently genetic in origin than the adult-onset forms, and the genetic analysis of these young-onset cases offers an opportunity to identify disease-causing genes.² By extension, any gene underlying juvenile ALS may also play a role in adult-onset ALS.

De novo genetic variants may underlie at least a portion of ALS cases. Such variants would not be detected by genome-wide association studies owing to their recent occurrence and corresponding low frequency within the community. Spontaneously occurring variants are a well-known cause of neurological conditions, such as neurofibromatosis type 1 and Duchenne muscular dystrophy.^{4,5} Indeed, de novo variants of the familial ALS genes *FUS*, *SOD1*, and *VCP* have been described in sporadic ALS cases.^{6,7} Such variants are more likely to present with early-onset disorders because of their impact on fitness.⁸

Here, we performed whole-exome sequencing of 3 patients diagnosed with juvenile ALS and their unaffected parents to identify the variants associated with their disease. None of these patients had a family history of neuromuscular disorders, suggesting de novo variations as the underlying genetic mechanism. After identifying variants in serine palmitoyltransferase, long-chain base subunit 1 (*SPTLC1*; OMIM, 605712) in all 3 cases, we also screened patients with juvenile ALS from Turkey for *SPTLC1* variants and identified a fourth patient carrying an *SPTLC1* variant.

Methods

Patients

Four unrelated patients with neuromuscular symptoms consistent with juvenile ALS participated in the study between March 2016 and January 2021. The **Table** summarizes the clinical features of the 4 patients. Detailed descriptions of each patient and their recruitment are available in the eMethods in the **Supplement**. All participants provided written informed consent for genetic analysis according to the Declaration of Helsinki, and the Institutional Review Board of the National Institutes of Health approved the study. Members of the FALS Sequencing Consortium, American Genome Center, International ALS Genomics Consortium, and ITALSGEN Consortium can be found in the eAppendix of the **Supplement**.

Patient 1 presented with gradually progressive spastic diplegia and growth retardation beginning at age 5 years. By age 20 years, she had quadriplegia with marked muscle atro-

Key Points

Question What genetic variants are associated with juvenile amyotrophic lateral sclerosis (ALS)?

Findings In this family-based genetic study, exome sequencing was performed in 3 patients diagnosed with juvenile ALS and failure to thrive; this identified de novo variants in *SPTLC1* (p.Ala20Ser in 2 patients and p.Ser331Tyr in 1 patient). Variants in *SPTLC1* are a known cause of hereditary sensory and autonomic neuropathy, type 1A, and these data extend the phenotype associated with this gene.

Meaning De novo variants in the *SPTLC1* gene are associated with juvenile ALS, a fatal neurological disorder.

phy and diminished weight, brisk lower limb reflexes, tongue fasciculations and weakness, dysarthria, mild cognitive dysfunction, and respiratory failure requiring tracheostomy and ventilation. Repeated neurophysiological testing did not show evidence of sensory or autonomic dysfunction. She was diagnosed with juvenile ALS based on the revised El Escorial criteria.⁹

Patient 2 was a teenaged girl of African American and White race who presented with a 6-year history of gradually progressive generalized limb and bulbar weakness. She had a long-standing history of progressive weight loss of unknown cause, and her school performance began to decline in her mid-teens. Her neurological examination at presentation revealed a body mass index less than the first percentile, exaggerated lumbar lordosis, tongue fasciculations and wasting, generalized muscle atrophy and weakness, brisk asymmetric ankle reflexes, a positive Gower sign, and normal sensation (**Figure 1A** and **B**). Neurophysiological testing revealed active and chronic denervation without evidence of sensory neuropathy. Decreased sustained attention and impaired executive functioning were evident in neuropsychological evaluation. She was diagnosed with juvenile ALS based on the revised El Escorial criteria.⁹

Patient 3 was an 11-year-old African American girl with a history of failure to gain weight and toe walking since age 4 years. She presented at age 10 years with a deteriorating gait, hand weakness, right foot paresthesia, dysphagia, and increased sweating. Examination revealed marked atrophy, postural tachycardia, bilateral cataracts, a wasted and fasciculating tongue with an exaggerated jaw jerk, generalized fasciculations and weakness associated with hyperreflexia, and decreased pinprick sensation in a glove-and-stocking distribution (**Figure 1C** and **D**). The patient walked abnormally owing to weakness and bilateral foot drop, and she had a positive Gower sign. Neurophysiological examination showed sensorimotor axonal neuropathy as well as polyphasic potentials on electromyography. She was diagnosed with juvenile ALS-Plus syndrome owing to her prominent motor symptoms and modest sensory-autonomic involvement. The pedigrees of patients 1, 2, and 3 are shown in **Figure 2A** to **C**.

Patient 4 was a 34-year-old Turkish woman with a history of arm and leg weakness and atrophy since age 15 years. There was no family history of neuromuscular disease, and

Table. Clinical Features of Patients Diagnosed With Juvenile Amyotrophic Lateral Sclerosis and Carrying Variants in *SPTLC1*

| Clinical feature | Patient 1 | Patient 2 | Patient 3 | Patient 4 |
|---------------------|-------------------------------------|-------------------------------------|---|-------------------|
| Gene change | p.Ala20Ser | p.Ala20Ser ^a | p.Ser331Tyr | p.Leu39del |
| Age at onset | 5 y | <10 y | 4 y | 15 y |
| Age at evaluation | 20 y | 10s | 11 y | 34 y |
| BMI (z score) | 13th Percentile (-1.1) | <1st Percentile (-7.0) | <1st Percentile (-6.5) | Normal |
| Back deformities | Severe scoliosis | Lordosis | Normal posture | NA |
| Foot deformities | Pes cavus | NA | Pes cavus/varus | NA |
| Walking | Nonambulatory | Steppage | Steppage | Abnormal |
| Atrophy | Global, contractures | Global | Global | Global |
| Weakness | Generalized | Generalized | Generalized | Generalized |
| Reflexes | Hyporeflexia, Achilles tendon brisk | Hyporeflexia, Achilles tendon brisk | Hyperreflexia, Achilles tendon absent | Hyporeflexia |
| Tongue | Wasted, fasciculations | Wasted, fasciculations | Wasted, fasciculations | NA |
| Jaw jerk | Present | NA | Present | NA |
| Respiratory | Tracheostomy at 17 y | NA | Dyspnea on exercise | Normal |
| Cognition | Executive dysfunction | Executive dysfunction | Normal | NA |
| Sensory | Normal | Normal | Glove-stocking pain loss, foot ulceration | Normal |
| Neurophysiology | | | | |
| Motor | Chronic denervation | Acute and chronic denervation | Axonal loss, polyphasia | Denerv |
| Sensory | Normal | Normal | Axonal loss | Normal |
| Additional features | NA | Scapular winging, Gower sign | Gower sign, vitamin D deficiency, hyperhidrosis | Uses a wheelchair |

Abbreviations: BMI, body mass index; NA, not applicable.

^a Variant was detected in 1 of 49 and 0 of 149 next-generation sequencing reads from the father's saliva-derived and buccal-derived DNA, respectively.

none of her 5 siblings had symptoms (Figure 2D). She was diagnosed with juvenile ALS, and she has been taking riluzole since age 15 years. Her symptoms were slowly progressive, and there were no upper motor neuron signs on examination. During her last review at age 34 years, she used a wheelchair, although she could walk short distances with assistance. She had no dysphagia and did not require oxygen supplementation, and her weight was normal. Neurophysiological examination at that time revealed denervation activity in all muscles and no evidence of multifocal motor neuropathy.

For variant screening of *SPTLC1* in adult-onset ALS, we used 6258 DNA samples obtained from individuals diagnosed with adult-onset ALS (eTable 1 in the Supplement). Control data consisted of 5710 neurologically healthy US individuals who had undergone next-generation sequencing at the Laboratory of Neurogenetics of the National Institute on Aging, National Institutes of Health, Bethesda, Maryland, or the Alzheimer Disease Sequencing Project.

Next-Generation Sequencing in Juvenile ALS

Whole-exome sequencing was performed using 100 base-pair, paired-end sequencing on an Illumina sequencer (eg, HiSeq 2000) according to the manufacturer's protocol. DNA from patient 1 and her family was sequenced in the Laboratory of Neurogenetics using TruSeq library preparation version 1.0. DNA from patients 2 and 3 and their families was sequenced at GeneDx using IDT xGen Exome Research Panel version 1.0.¹⁰

Data were analyzed to identify de novo variants present in the affected child and not present in either parent. As the variants underlying a rare disease, such as ALS, are unlikely to be present in the general population, variants present in the Genome Aggregation Database (gnomAD; version 2.1) or the Kaviar Genomic Variant database (September 23, 2015, version) were excluded. Synonymous, intronic, and intergenic changes were excluded (ANNOVAR; August 11, 2016, version). Paternity and maternity were confirmed using identity-by-descent analysis, and exome data were reviewed to identify variants in known ALS genes.

SPTLC1 Sequencing in Adult-Onset ALS

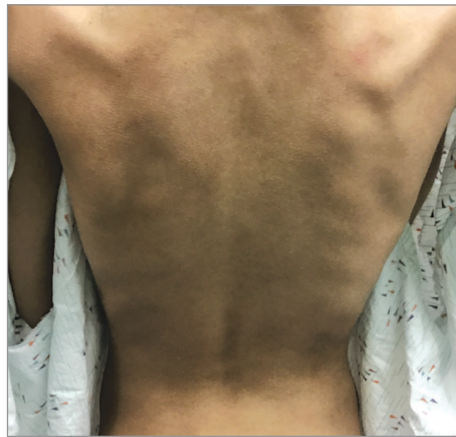
DNA from 6258 patients with adult-onset ALS were sequenced to identify variants in the *SPTLC1* gene (whole-exome sequencing, 3748 cases^{11,12}; whole-genome sequencing, 1860 cases; Sanger sequencing, 650 cases) (eTable 2 in the Supplement). Variants in *SPTLC1* were considered to be deleterious if they (1) were not present in the 4647 controls from the Alzheimer Disease Sequencing Project; (2) had a frequency less than 3.3×10^{-5} in human variant databases, including the 51 592 European and 8949 Finnish nonneurological individuals in gnomAD and the 77 301 samples in Kaviar database³; and (3) were designated as damaging according to 4 of 5 prediction algorithms,¹³ were identified as stop gain or frameshift, or were identified as splice-site variants with a dbcsSNV score higher than 0.6. Gene burden testing of *SPTLC1* was performed using publicly available control data (gno-

Figure 1. Clinical Features of Patients Diagnosed With Juvenile Amyotrophic Lateral Sclerosis

A Tongue wasting in patient 2



B Scapular winging in patient 2



C Tongue wasting in patient 3



D Leg muscle atrophy in patient 3



A and B, Tongue wasting and scapular winging in patient 2 carrying the p.Ala20Ser *SPTLC1* variant. C and D, Tongue wasting and muscle atrophy of the lower limbs in patient 3 carrying the p.Ser331Tyr *SPTLC1* variant. Note the hammertoe deformities of both feet.

mAD and Kaviar databases) as implemented in the Test Rare Variants With Public Data (TRAPD) software package version 1.0.¹⁴ The statistical significance threshold was set at a 1-tailed *P* value less than .05 for single-gene analysis and 2.5×10^{-6} for genome-wide significance (.05/20 000 genes).

Cellular Mitochondrial Assays

Variants were introduced into a plasmid containing the human *SPTLC1* open reading frame (Origene) using the QuikChange II XL kit (Agilent), followed by subcloning into pLenti-C-Myc-DDK-P2A-Puro lentiviral plasmid (Origene). Lentiviruses were produced with third-generation packaging plasmids (pMDLg/pRRE and pRSV-Rev; Addgene) and envelope plasmid (pMD2.G; Addgene).¹⁵ HEK293FT cells were transfected with wild-type or variant lentivirus transfer plasmid, and transduced cells stably expressing *SPTLC1* were selected by extended growth in 0.5- μ g/mL puromycin (Thermo Fisher Scientific). For the serine rescue experiment, a final concentration of 100-mM L-serine was added to the media for 48 hours. Mitochondria were imaged with MitoTracker Red CMXRos (Thermo Fisher Scientific) using a CellInsight imager (Thermo Fisher Scientific). A minimum of 6 wells were quantified for each condition, and all assays were performed at least twice.

Unpaired *t* test with Welch correction or analysis of variance were used to calculate statistical significance.

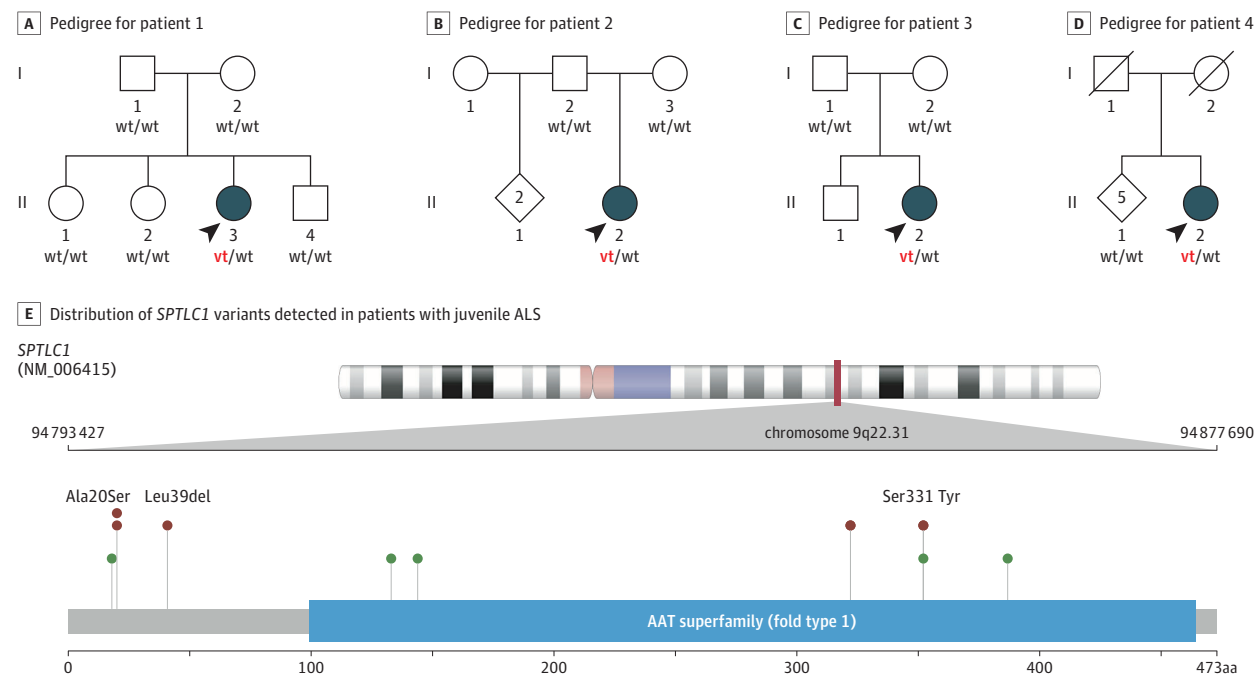
Sphingolipid Measurements

Plasma sphingolipid and glucosylceramide measurements were performed at the Biomedical Genetics Clinical Laboratory, Seattle Children's Hospital, Seattle, Washington, using high-performance liquid chromatography and tandem mass spectrometry.

Results

Identification of De Novo Variants in *SPTLC1* Associated With Juvenile ALS

We performed whole-exome sequencing in 3 unrelated patients who had been diagnosed with juvenile ALS and their healthy parents (Figure 1; Figure 2A to C; Table). The analysis of their genetic data identified de novo variants in the *SPTLC1* gene in each of the 3 patients that were absent in their parents (Figure 2E). Patients 1 and 2 carried the same heterozygous p.Ala20Ser variant in *SPTLC1* caused by variation in adjacent nucleotides (chr9:94874844C>A and chr9:

Figure 2. De Novo Variants of *SPTLC1* in Patients Diagnosed With Juvenile Amyotrophic Lateral Sclerosis (ALS)

A-D, Pedigrees of 4 patients diagnosed with juvenile ALS. The variant alleles in *SPTLC1* are indicated by vt, and wild-type alleles are indicated by wt. The arrowheads indicate the probands. E, Distribution of *SPTLC1* variants detected

in patients diagnosed with juvenile ALS. Variants identified in the 3 patients with juvenile ALS are noted in red, and variants previously described to cause hereditary sensory and autonomic neuropathy, type 1A, are shown in green.

94874843G>T; human genome build hg19). Patient 3 carried a p.Ser331Tyr (chr9:94809543G>T) heterozygous variation in *SPTLC1*. Screening of the *SPTLC1* gene in a cohort of 63 patients with juvenile ALS from Turkey who had undergone whole-exome sequencing identified a p.Leu39del (chr9:94874785_94874787del) heterozygous variant in patient 4 (Figure 2D). Parental DNA was not available, making it impossible to determine if the deletion had occurred spontaneously. These *SPTLC1* variants were not present in controls or online databases of human variants (142 489 individuals). The p.Ser331Tyr and p.Leu39del amino acid changes have been previously implicated in neurological disease.¹⁶

Serine and the Damaging Effects of the p.Ala20Ser Variant in Vitro

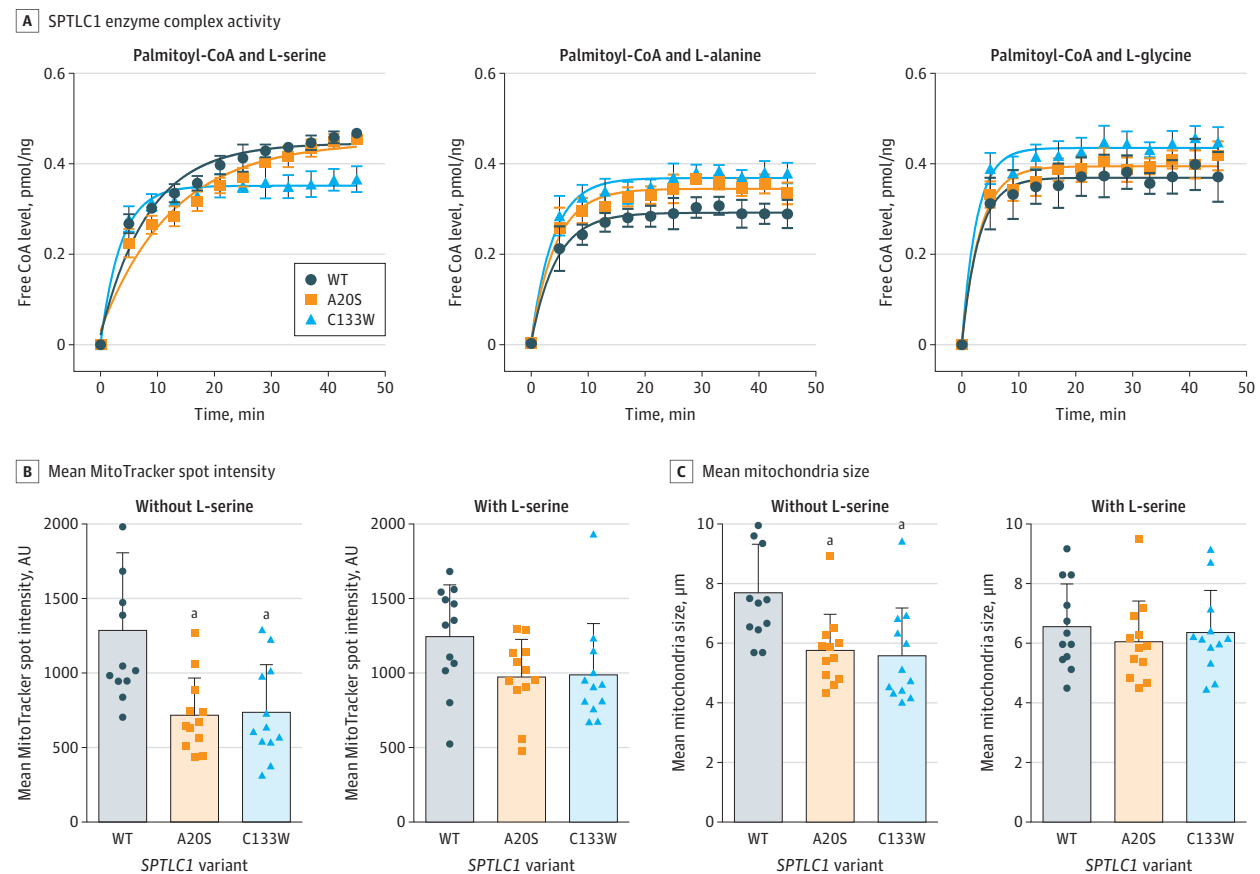
Variants in *SPTLC1* are a known cause of autosomal-dominant hereditary sensory and autonomic neuropathy, type 1A (HSAN1; OMIM, 162400).^{17,18} The protein encoded by *SPTLC1* is an essential subunit of serine palmitoyltransferase (SPT), the enzyme that catalyzes the first and rate-limiting step in the de novo synthesis of sphingolipids.¹⁹ A characteristic feature of *SPTLC1* variants associated with HSAN1 is a shift in substrate specificity of SPT to L-alanine and L-glycine, leading to the formation of an atypical class of deoxysphingolipids.²⁰ These neurotoxic metabolites accumulate within cells as they cannot be converted to complex sphingolipids nor degraded by the catabolic pathway.²⁰

Based on this information, we used a photometric assay of SPT enzyme activity to explore the association of the de novo

variants with protein function. We found that the p.Ala20Ser variant *SPTLC1* complex had an altered L-alanine and glycine preference over the canonical L-serine compared with the wild-type *SPTLC1* complex (Figure 3A; eFigure 1 in the Supplement). Differences were also observed using cell-based assays based on established HSAN1-mitochondrial phenotypes (Figure 3B and C; eFigure 1 in the Supplement).²¹ Mitochondrial size and intensity were defective to the same degree in cells expressing p.Ala20Ser and p.Cys133Trp. These defects were reversed to the wild-type phenotype on serine supplementation in the culture (Figure 3B and C; eFigure 1 in the Supplement).

SPTLC1 Variants in Patients With Adult-Onset ALS

Having established that variants in *SPTLC1* are associated with juvenile ALS, we explored the role of variation in this gene in the pathogenesis of adult-onset ALS by evaluating the occurrence of *SPTLC1* variants in a series of 6258 patients with adult-onset ALS. This screening identified 20 novel *SPTLC1* variants in 23 patients with ALS (0.4%) that were rare or absent in healthy controls and were predicted to be damaging (eTable 3 and eFigures 2 and 3 in the Supplement). The typical clinical features of ALS were observed among these patients with adult-onset disease, and none of the patients reported sensory or autonomic involvement (eTable 4 in the Supplement). The intensity and number of motor neurons staining with *SPTLC1* were diminished in autopsy tissue obtained from a patient with ALS carrying a p.Arg445Gln variant in *SPTLC1* (eFigure 4 in the Supplement). Gene burden testing was not sig-

Figure 3. Photometric and Cell-Based Assays in the Presence of Select *SPTLC1* Variants

A, The *SPTLC1* enzyme complex activity was determined using a photometric assay measuring the release of free coenzyme A (CoA) from the condensation reaction between palmitoyl-CoA and L-serine, L-alanine, and L-glycine. The variant p.Ala20Ser and p.Cys133Trp *SPTLC1* complex had increased preference for L-alanine and L-glycine over L-serine compared with the wild-type (WT) *SPTLC1* complex. B and C, Mitochondria in HEK293 cells expressing WT,

p.Ala20Ser, and p.Cys133Trp were assessed using MitoTracker on a high-content imager. Mitochondrial intensity and mitochondria size were smaller in cells expressing variant protein under standard culture conditions. Supplementation of 100 mM L-serine in the culture media for 48 hours rescued the mitochondrial abnormalities in the p.Ala20Ser and p.Cys133Trp lines.

nificant for *SPTLC1* variants as a cause of adult-onset ALS (87 variants in population samples; uncorrected 1-sided Fisher test *P* value using TRAPD software package = 1.9×10^{-4} ; not significant after correction for multiple testing of 20 000 genes).

Discussion

We provide genetic, biochemical, and cellular data that variations in *SPTLC1* are associated with juvenile ALS. First, we found 3 unrelated patients diagnosed with juvenile ALS who carried de novo variants in *SPTLC1* and identified a fourth patient with juvenile ALS carrying another *SPTLC1* variant for whom inheritance could not be determined. These variants were not present in our in-house control data set or in online databases of human variants, indicating they were rare variants in diverse populations. Two of the patients carried the same alanine to serine amino acid shift at position 20 of the protein, which arose from different nucleotide changes.

Second, cell-based assays of SPT activity confirmed that the p.Ala20Ser variation altered the encoded enzyme's function, leading to increased aberrant utilization of alanine and glycine as substrates. This biochemical pattern was consistent with a mechanism reported in patients with HSAN1 caused by *SPTLC1* variants.²⁰ Third, we used immunohistochemistry to demonstrate that *SPTLC1* is abundantly expressed within the motor neurons of healthy spinal cord tissue.

Though labeled as HSAN1, the phenotypes associated with variants in *SPTLC1* are varied, with patients manifesting various combinations of sensory loss, autonomic dysfunction, and motor weakness.²² Indeed, there is a previous report of a de novo p.Ser331Tyr variant in *SPTLC1* in a young French girl presenting with a similar phenotype to the patients in this article.¹⁶ Her clinical picture consisted of severe growth restriction, cognitive impairment, amyotrophy, hyperreflexia, vocal cord paralysis, and respiratory failure, although this patient was not diagnosed as having juvenile ALS. More recently, retinal disease has been reported in patients carrying *SPTLC1* variants.²³ This clinical heterogeneity has been linked to the differing ef-

fects of each variant on *SPTLC1* enzyme-substrate preference,²⁰ and we observed similar differences in substrate utilization across the variants that we had studied at the enzymatic level (Figure 3A). Alternatively, the phenotypes associated with variants in *HSAN1* may represent a continuum between sensory neuropathy and ALS. Future postmortem studies that determine the central nervous system pathology (eg, TAR DNA-binding protein 43, tau, β -amyloid deposition) underlying the motor neuron deficits and the cognitive impairment may resolve the nature of this overlap with other neurodegenerative diseases.

Perturbed sphingolipid metabolism underlies many neurological disorders, such as Niemann-Pick disease and Gaucher disease,²⁴ and may play a role in the pathogenesis of Alzheimer disease.²⁵ Sphingolipid metabolism has also been implicated in motor neuron degeneration. For example, patients with partial deficiency of hexosaminidase A enzyme activity (also known as GM2 gangliosidosis, a form of sphingolipidosis) may have clinical manifestations mimicking ALS.²⁶ The accumulation of ceramides and cholesterol esters also occurs within the spinal cords of patients with ALS and an *SOD1* transgenic mouse model of ALS.²⁷

Owing to the poor prognosis observed among patients with juvenile ALS and work published by other groups,^{20,28} patient 2 was commenced on high-dose (10 g per day) oral serine supplementation on a compassionate basis. Her body weight increased during this off-label treatment, which was the first time she had gained weight in several years. The patient's ceramide levels were within normal range and trending downwards, indicating that ceramide toxic effects, a theoretical possibility with serine treatment, were not present (eFigure 5 and eTable 5 in the Supplement). We did not observe evidence of neurological improvement, although prolonged therapy would be required to detect such an effect.²⁹

Serine is a nonessential amino acid that is available as a low-cost nutritional supplement. A 10% serine-enriched diet was associated with a reduction in neurotoxic deoxysphingo-

lipid plasma levels both in transgenic mice expressing the p.Cys133Trp *SPTLC1* variant and in human patients diagnosed with *HSAN1*.²⁸ Furthermore, a safety trial involving 20 patients with adult-onset ALS demonstrated that high doses of oral serine are well tolerated and that this polar amino acid is actively transported across the blood-brain barrier.³⁰ Nutritional supplementation has proven to be remarkably effective in other forms of ALS.³¹ Despite these supportive data, future clinical trials are needed to determine the effectiveness and safety profile of serine supplementation in patients with juvenile ALS owing to *SPTLC1* variants.

Limitations

Our study had limitations. DNA was not available from the parents of patient 4, so it was not possible to determine whether or not the variation arose spontaneously. Nevertheless, the lack of a family history supports the possibility that this variant was de novo in origin; there is only a 3.1% chance that none of her 5 siblings would have inherited an autosomal-dominant variant from a transmitting parent. Our evidence also demonstrates that variants in *SPTLC1* are not a common cause of adult-onset ALS. Overall, our data imply that the genetic causes of juvenile ALS and adult-onset ALS are distinct.

Conclusions

In conclusion, our data broaden the phenotype associated with variants in *SPTLC1* to include juvenile ALS and implicate sphingolipid metabolism as a pathway in motor neuron disease. Our findings are relevant in light of the fact that nutritional supplementation with serine has been postulated to ameliorate the toxic effect of abnormal sphingolipid metabolites if instituted at an early stage in the disease.²⁸ In such cases, abnormal plasma metabolites could be used as a marker of target engagement.³² This provides an early opportunity for future clinical trials to test the precision medicine approach in an otherwise fatal neurodegenerative disease.

ARTICLE INFORMATION

Accepted for Publication: May 27, 2021.

Published Online: August 30, 2021.
doi:10.1001/jamaneurol.2021.2598

Open Access: This is an open access article distributed under the terms of the [CC-BY License](#).
© 2021 Johnson JO et al. *JAMA Neurology*.

Author Affiliations: Neuromuscular Diseases Research Section, Laboratory of Neurogenetics, National Institute on Aging, National Institutes of Health, Bethesda, Maryland (Johnson, Chia, Abramzon, Renton, Traynor); Division of Medical Genetics, Department of Medicine, University of Washington, Seattle (Miller, Chang, Glass); Department of Pediatrics, Division of Genetic Medicine, Seattle Children's Hospital, University of Washington, Seattle (Miller, Bonkowski, Glass); Department of Pediatrics, Children's Hospital of Richmond at VCU, Richmond, Virginia (Li); Cell Biology and Gene Expression Section, Laboratory of Neurogenetics, National Institute on Aging, National Institutes of Health, Bethesda, Maryland

(Kumaran); Reta Lila Weston Institute, UCL Queen Square Institute of Neurology, University College London, London, United Kingdom (Abramzon, Cookson, Traynor); Maurice Wohl Clinical Neuroscience Institute, Institute of Psychiatry, Psychology and Neuroscience, King's College London, London, United Kingdom (Alahmady, Topp, Troakes, Jones, Shatunov, Iacoangeli, Al Khleifat, Al-Chalabi, C. E. Shaw, Smith); Department of Biology, Imam Abdulrahman bin Faisal University, Dammam, Saudi Arabia (Alahmady); Nash Family Department of Neuroscience, Icahn School of Medicine at Mount Sinai, New York, New York (Renton); Ronald M. Loeb Center for Alzheimer's Disease, Icahn School of Medicine at Mount Sinai, New York, New York (Renton); Department of Genetics and Genomic Sciences, Icahn School of Medicine at Mount Sinai, New York, New York (Renton); UK Dementia Research Institute at King's College London, London, United Kingdom (Topp, C. E. Shaw); Computational Biology Group, Laboratory of Neurogenetics, National Institute on Aging,

National Institutes of Health, Bethesda, Maryland (Gibbs); Neurodegenerative Diseases Research Unit, Laboratory of Neurogenetics, National Institute of Neurological Disorders and Stroke, National Institutes of Health, Bethesda, Maryland (Sabir); Department of Anatomy, Physiology & Genetics, Uniformed Services University of the Health Sciences, Bethesda, Maryland (Dalgard); The American Genome Center, Collaborative Health Initiative Research Program, Uniformed Services University of the Health Sciences, Bethesda, Maryland (Dalgard); Istituto Auxologico Italiano, IRCCS, Department of Neurology-Stroke Unit and Laboratory of Neuroscience, Milan, Italy (Ticozzi, Silani); Department of Pathophysiology and Transplantation, "Dino Ferrari" Center, Università degli Studi di Milano, Milan, Italy (Ticozzi, Silani); Unit of Genetics of Neurodegenerative and Metabolic Diseases, Fondazione IRCCS Istituto Neurologico 'Carlo Besta,' Milan, Italy (Gellera); Centre for Motor Neuron Disease Research, Department of Biomedical Sciences, Faculty of Medicine and Health Sciences, Macquarie

University, Sydney, Australia (Blair); The University of Sydney, Brain and Mind Centre and School of Medical Sciences, Faculty of Medicine and Health, Camperdown, Australia (Dobson-Stone, Kwok); School of Medical Sciences, University of New South Wales, Kensington, Australia (Dobson-Stone, Kwok); Suna and Inan Kirac Foundation, Neurodegeneration Research Laboratory, KUTTAM, School of Medicine, Koc University, Istanbul, Turkey (Palvadeau, Basak); Department of Neurology, Helsinki University Hospital and Translational Immunology Programme, Biomedicum, University of Helsinki, Helsinki, Finland (Tienari); Faculty of Medicine, Health and Life Sciences, Queen's University Belfast, Belfast, United Kingdom (Morrison); Sheffield Institute for Translational Neuroscience, Department of Neuroscience, University of Sheffield, Sheffield, United Kingdom (P. J. Shaw); Department of Neurology, King's College Hospital, London, United Kingdom (Al-Chalabi); Department of Neurology, University of Massachusetts Medical School, Worcester (Brown, Landers); ALS Center, 'Rita Levi Montalcini' Department of Neuroscience, University of Turin, Turin, Italy (Calvo, Chiò); ALS Center, ICS Maugeri, IRCCS, Milan, Italy (Mora); Department of Neurology, Children's Hospital of Richmond at VCU, Richmond, Virginia (Al-Saif); Department of Neurology, The Agnes Ginges Center for Human Neurogenetics, Hadassah Medical Organization and Faculty of Medicine, Hebrew University of Jerusalem, Jerusalem, Israel (Gotkine); Department of Neurology, Seattle Children's Hospital, University of Washington, Seattle (Leigh, Perlman); Department of Laboratories, Seattle Children's Hospital, Seattle, Washington (Scott); Department of Laboratory Medicine, University of Washington, Seattle (Scott); Neurology 1, AOU Città della Salute e della Scienza, Turin, Italy (Chiò); Department of Neurology, Johns Hopkins University, Baltimore, Maryland (Crawford, Traynor); Department of Pediatrics, Johns Hopkins University, Baltimore, Maryland (Crawford); National Institute of Neurological Disorders and Stroke, Bethesda, Maryland (Traynor).

The FALS Sequencing Consortium, American Genome Center, International ALS Genomics Consortium, and ITALSGEN Consortium Authors:

Bradley N. Smith, PhD; Nicola Ticozzi, MD, PhD; Claudia Fallini, PhD; Athina Soragia Gkazi, PhD; Simon D. Topp, MSc; Emma L. Scotter, PhD; Kevin P. Kenna, PhD; Pamela Keagle, BS; Cinzia Tiloca, PhD; Caroline Vance, PhD; Claire Troakes, PhD; Claudia Colombrita, PhD; Andrew King, FRCPATH; Viviana Pensato, PhD; Barbara Castellotti, PhD; Frank Baas, MD, PhD; Annelore L. M. A. ten Asbroek, PhD; Diane McKenna-Yasek, RN; Russell L. McLaughlin, PhD; Meraida Polak, RN; Seneshaw Asress, MSc; Jesús Esteban-Pérez, MD; Zorica Stevic, MD, PhD; Sandra D'Alfonso, PhD; Letizia Mazzini, MD; Giacomo P. Comi, MD; Roberto Del Bo, PhD; Mauro Ceroni, MD; Stella Gagliardi, PhD; Giorgia Querin, MD; Cinzia Bertolin, PhD; Wouter van Rheenen, MD; Rosa Rademakers, PhD; Marka van Blitterswijk, MD, PhD; Giuseppe Lauria, MD; Stefano Duga, PhD; Stefania Corti, MD, PhD; Cristina Cereda, PhD; Lucia Corrado, PhD; Gianni Soraru, MD, PhD; Kelly L. Williams, PhD; Garth A. Nicholson, PhD; Ian P. Blair, PhD; Claire Leblond-Manry, PhD; Guy A. Rouleau, MD, PhD; Orla Hardiman, MD; Karen E. Morrison, MD; Jan H. Veldink, MD, PhD; Leonard H. van den Berg, MD, PhD; Ammar Al-Chalabi, MD, PhD; Hardev Pall, MD; Pamela J. Shaw, MD; Martin

R. Turner, MD; Kevin Talbot, MD; Franco Taroni, MD; Alberto García-Redondo, PhD; Zheyang Wu, PhD; Jonathan D. Glass, MD; Cinzia Gellera, PhD; Antonia Ratti, PhD; Robert H. Brown Jr, MD, DPhil; Vincenzo Silani, MD; Christopher E. Shaw, MD; John E. Landers, PhD; Clifford L. Dalgard, PhD; Adelani Adeleye, MS; Anthony R. Soltis, PhD; Camille Alba, MS; Coralie Violette, PhD; Dagmar Bacikova, MS; Daniel N. Hupalo, PhD; Gauthaman Sukumar, MS; Harvey B. Pollard, MD, PhD; Matthew D. Wilkerson, PhD; Elisa McGrath Martinez, BS; Yevgeniya Abramzon, BS; Sarah Ahmed, BS; Sampath Arepalli, MS; Robert H. Baloh, MD; Robert Bowser, PhD; Christopher B. Brady, PhD; Alexis Brice, MD; James Broach, PhD; Roy H. Campbell, PhD; William Camu, MD; Ruth Chia, PhD; John Cooper-Knock, MD; Jinhui Ding, PhD; Carsten Drepper, PhD; Vivian E. Drory, MD; Travis L. Dunckley, PhD; John D. Eicher, PhD; Bryce K. England, BS; Faraz Faghri, BS; Eva Feldman, MD; Mary Kay Floeter, MD; Pietro Fratta, MD; Joshua T. Geiger, MD; Glenn Gerhard, MD; J. Raphael Gibbs, PhD; Summer B. Gibson, MD; Jonathan D. Glass, MD; John Hardy, PhD; Matthew B. Harms, MD; Terry D. Heiman-Patterson, MD; Dena G. Hernandez, PhD; Lilja Jansson; Janine Kirby, PhD; Neil W. Kowall, MD; Hannu Laaksovirta, MD; Natalie Landeck, PhD; Francesco Landi, MD; Isabelle Le Ber, MD, PhD; Serge Lumbroso, MD; Daniel J. L. MacGowan, MD; Nicholas J. Maragakis, MD; Gabriele Mora, MD; Kevin Mouzat, MD; Natalie A. Murphy, BS; Liisa Myllykangas, MD, PhD; Mike A. Nalls, PhD; Richard W. Orrell, MD; Lyle W. Ostrow, MD, PhD; Roger Pamplett, MD; Stuart Pickering-Brown, PhD; Erik P. Pioro, MD; Olga Pletnikova, MD; Hannah A. Pliner, PhD; Stefan M. Pulst, MD; John M. Ravits, MD; Alan E. Renton, PhD; Alberto Rivera, BS; Wim Robberecht, MD; Ekaterina Rogava, PhD; Sara Rollinson, PhD; Jeffrey D. Rothstein, MD, PhD; Sonja W. Scholz, MD, PhD; Michael Sendtner, MD; Pamela J. Shaw, MD; Katie C. Sidle, MD; Zachary Simmons, MD; Andrew B. Singleton, PhD; Nathan Smith, PhD; David J. Stone, PhD; Pentti J. Tienari, MD, PhD; Juan C. Troncoso, MD; Miiko Valori, PhD; Philip Van Damme, MD; Vivianna M. Van Deerlin, MD, PhD; Ludo Van Den Bosch, PhD; Lorne Zinman, MD; John E. Landers, PhD; Adriano Chiò, MD; Bryan J. Traynor, MD, PhD; Stefania M. Angelocola, MD; Francesco P. Ausiello, MD; Marco Barberis, BSc; Ilaria Bartolomei, MD; Stefania Battistini, MD, PhD; Enrica Bersano, MD; Giulia Bisogni, MD; Giuseppe Borghero, MD; Maura Brunetti, BSc; Corrado Cabona, MD; Andrea Calvo, MD, PhD; Fabrizio Canale, MD; Antonio Canosa, MD, PhD; Teresa A. Cantisani, MD; Margherita Capasso, MD; Claudia Caponnetto, MD; Patrizio Cardinali, MD; Paola Carrera, PhD; Federico Casale, PhD; Adriano Chiò, MD; Tiziana Colletti, MD; Francesca L. Conforti, MD; Amelia Conte, MD; Elisa Conti, MD; Massimo Corbo, MD; Stefania Cuccu, PsyD; Eleonora Dalla Bella, MD; Eustachio D'Errico, MD; Giovanni DeMarco, PhD; Raffaele Dubbio, MD; Carlo Ferrarese, MD; Pilar M. Ferraro, PhD; Massimo Filippi, MD, PhD; Nicola Fini, MD; Gianluca Floris, MD; Giuseppe Fuda, BSc; Salvatore Gallone, MD; Giulia Gianferrari, MD; Fabio Giannini, MD, PhD; Maurizio Grassano, MD; Lucia Greco, PsyD; Barbara Iazzolino, PsyD; Alessandro Introna, MD; Vincenzo La Bella, MD, PhD; Serena Lattante, PhD; Giuseppe Lauria, MD; Rocco Liguori, MD, PhD; Giancarlo Logroscino, MD, PhD; Francesco O. Logullo, MD; Christian Lunetta, MD; Paola Mandich, MD; Jessica Mandrioli, MD; Umberto Manera, MD; Fiore Manganeli, MD; Giuseppe Marangi, MD;

Kalliopi Marinou, MD; Maria Giovanna Marrosu, MD; Ilaria Martinelli, MD; Sonia Messina, MD, PhD; Cristina Moglia, MD, PhD; Gabriele Mora, MD; Lorena Mosca, PhD; Maria R. Murrù, MD; Paola Origone, PhD; Carla Passaniti, MD; Cristina Petrelli, MD; Antonio Petrucci, MD; Susanna Pozzi, PsyD; Maura Pugliatti, MD, PhD; Angelo Quattrini, MD, PhD; Claudia Riccio, MD; Giulia Riolo, PhD; Nilo Riva, MD, PhD; Massimo Russo, MD; Mario Sabatelli, MD; Paolina Salamone, PhD; Marco Salivetto, PhD; Fabrizio Salvi, MD; Marialuisa Santarelli, MD; Luca Sbaiz, BSc; Riccardo Sideri, MD; Isabella Simone, MD; Cecilia Simonini, MD; Rossella Spataro, MD; Raffaella Tanel, MD; Giocchino Tedeschi, MD; Anna Ticca, MD; Antonella Torriello, MD; Stefania Tranquilli, MD; Lucio Tremolizzo, MD; Francesca Trojsi, MD; Rosario Vasta, MD; Veria Vacchiano, MD; Giuseppe Vita, MD, PhD; Paolo Volanti, MD; Marcella Zollino, MD; Elisabetta Zucchi, MD.

Affiliations of The FALS Sequencing Consortium, American Genome Center, International ALS Genomics Consortium, and ITALSGEN Consortium Authors:

Centre for Neurodegeneration Research, King's College London, Department of Clinical Neuroscience, Institute of Psychiatry, London, United Kingdom (B. N. Smith, Gkazi, Topp, King); Department of Neurology and Laboratory of Neuroscience, IRCCS Istituto Auxologico Italiano, Milan, Italy (Ticozzi, Ratti, Silani); Department of Pathophysiology and Transplantation, "Dino Ferrari" Center, Università degli Studi di Milano, Milan, Italy (Ticozzi, Silani); Department of Neurology, University of Massachusetts Medical School, Worcester (Fallini, Kenna, Keagle, McKenna-Yasek, Brown Jr, John E. Landers); UK Dementia Research Institute at King's College London, London, United Kingdom (Topp, C. E. Shaw); Centre for Brain Research, University of Auckland, Auckland, New Zealand (Scotter); Department of Neurology, IRCCS Istituto Auxologico Italiano, Milan, Italy (Tiloca, Colombrita); Maurice Wohl Clinical Neuroscience Institute, Department of Basic and Clinical Neuroscience, King's College London, London, United Kingdom (Vance, Troakes, Al-Chalabi, C. E. Shaw); Unit of Medical Genetics and Neurogenetics, Fondazione IRCCS Istituto Neurologico 'Carlo Besta', Milan, Italy (Pensato, Castellotti, Taroni, Gellera); Clinical Genetics, Leiden University Medical Center, Leiden, the Netherlands (Baas); Department of Neurogenetics and Neurology, Academic Medical Centre, Amsterdam, the Netherlands (ten Asbroek); Population Genetics Laboratory, Smurfit Institute of Genetics, Trinity College Dublin, Dublin, Republic of Ireland (McLaughlin); Department of Neurology, Emory University, Atlanta, Georgia (Polak, Asress, Jonathan D. Glass); Unidad de ELA, Instituto de Investigación Hospital 12 de Octubre de Madrid, SERMAS, and Centro de Investigación Biomédica en Red de Enfermedades Raras (CIBERER U-723), Madrid, Spain (Esteban-Pérez, García-Redondo); Neurology Clinic, Clinical Center of Serbia School of Medicine, University of Belgrade, Belgrade, Serbia (Stevic); Department of Health Sciences, University of Eastern Piedmont, Novara, Italy (D'Alfonso, Corrado); ALS Center, Azienda Ospedaliero Universitaria Maggiore della Carità, Novara, Italy (Mazzini); Neurology Unit, IRCCS Fondazione Ca' Granda Ospedale Maggiore Policlinico, Milan, Italy (Comi, Del Bo, Corti); Department of Brain and Behavior, University of Pavia, Pavia, Italy (Ceroni); General Neurology Unit, IRCCS Mondino

Foundation, Pavia, Italy (Ceroni); Genomic and Post-Genomic Center, Mondino Foundation–IRCCS, Pavia, Italy (Gagliardi, Cereda); Department of Neurosciences, University of Padova, Padova, Italy (Querin, Bertolin, Sorarù); Department of Neurology, Brain Center Rudolf Magnus, University Medical Center Utrecht, Utrecht, the Netherlands (van Rheenen, Veldink, van den Berg); Department of Neuroscience, Mayo Clinic, Jacksonville, Florida (Rademakers, van Blitterswijk); 3rd Neurology Unit, Motor Neuron Diseases Center, Fondazione IRCCS Istituto Neurologico ‘Carlo Besta,’ Milan, Italy (Giuseppe Lauria); Humanitas Clinical and Research Center–IRCCS, Milan, Italy (Duga); Department of Biomedical Sciences, Humanitas University, Milan, Italy (Duga); Centre for Motor Neuron Disease Research, Department of Biomedical Sciences, Faculty of Medicine and Health Sciences, Macquarie University, Sydney, Australia (Williams, Nicholson, Blair); Molecular Medicine Laboratory, Clinical Sciences Building, Concord Hospital, Concord, Australia (Nicholson); Human Genetics and Cognitive Functions Unit, Institut Pasteur, Paris, France (Leblond-Manry); Montreal Neurological Institute, Department of Neurology and Neurosurgery, McGill University, Montreal, Quebec, Canada (Rouleau); Academic Unit of Neurology, Trinity Biomedical Sciences Institute, Trinity College Dublin, Dublin, Republic of Ireland (Hardiman); Faculty of Medicine, Health and Life Sciences, Queen’s University Belfast, Belfast, United Kingdom (Morrison); School of Clinical and Experimental Medicine, University of Birmingham, Birmingham, United Kingdom (Pall); Sheffield Institute for Translational Neuroscience, Department of Neuroscience, University of Sheffield, Sheffield, United Kingdom (Pamela J. Shaw); Nuffield Department of Clinical Neurosciences, University of Oxford, Oxford, United Kingdom (Turner, Talbot); Department of Bioinformatics and Computational Biology, Worcester Polytechnic Institute, Worcester, Massachusetts (Wu); The American Genome Center, Collaborative Health Initiative Research Program, Uniformed Services University of the Health Sciences, Bethesda, Maryland (Dalgard, Adeleye, Soltis, Alba, Viollet, Bacikova, Hupalo, Sukumar, Pollard, Wilkerson, Martinez); Department of Anatomy, Physiology & Genetics, Uniformed Services University of the Health Sciences, Bethesda, Maryland (Dalgard, Pollard, Wilkerson); Henry M. Jackson Foundation for the Advancement of Military Medicine, Bethesda, Maryland (Adeleye, Soltis, Alba, Viollet, Bacikova, Hupalo, Sukumar, Wilkerson, Martinez); Neuromuscular Diseases Research Section, Laboratory of Neurogenetics, National Institute on Aging, Bethesda, Maryland (Abramzon, Chia, Murphy, Pliner, Renton, Rivera, Traynor); Sobell Department of Motor Neuroscience and Movement Disorders, Institute of Neurology, University College London, London, United Kingdom (Abramzon, Fratta); Neurodegenerative Diseases Research Unit, Laboratory of Neurogenetics, National Institute of Neurological Disorders and Stroke, Bethesda, Maryland (Ahmed, Geiger, Scholz); Genomics Technology Group, Laboratory of Neurogenetics, National Institute on Aging, Bethesda, Maryland (Arepalli, Hernandez); Department of Neurology, Cedars-Sinai Medical Center, Los Angeles, California (Baloh); Division of Neurology, Barrow Neurological Institute, Phoenix, Arizona (Bowser); Research and Development Service, Veterans Affairs Boston Healthcare System, Boston, Massachusetts (Brady);

Centre de Recherche de l’Institut du Cerveau et de la Moelle épinière, Université Pierre et Marie Curie, Paris, France (Brice, Le Ber); INSERM U975, Paris, France (Brice, Le Ber); Department of Biochemistry, Penn State College of Medicine, Hershey, Pennsylvania (Broach); Department of Computer Science, University of Illinois at Urbana-Champaign, Urbana (Campbell, Faghri); ALS Reference Center, Gui de Chauliac Hospital, CHU and University of Montpellier, Montpellier, France (Camu); Department of Neuroscience, University of Sheffield, Sheffield, United Kingdom (Cooper-Knock, Kirby, Pamela J. Shaw); Computational Biology Group, Laboratory of Neurogenetics, National Institute on Aging, Bethesda, Maryland (Ding, Gibbs); Institute for Clinical Neurobiology, University of Würzburg, Würzburg, Germany (Drepper); Department of Neurology, Tel-Aviv Sourasky Medical Center, Tel-Aviv, Israel (Drory); Neurodegenerative Disease Research Center, Biodesign Institute, Arizona State University, Tempe (Dunckley); Department of Genetics and Pharmacogenomics, Merck Research Laboratories, Merck, West Point, Pennsylvania (Eicher, Stone); Human Genetics Branch, National Institute of Mental Health, Bethesda, Maryland (England); Molecular Genetics Section, Laboratory of Neurogenetics, National Institute on Aging, Bethesda, Maryland (Faghri, Nalls, Singleton); Department of Neurology, University of Michigan, Ann Arbor (Feldman); Motor Neuron Disorders Unit, Laboratory of Neurogenetics, National Institute of Neurological Disorders and Stroke, Bethesda, Maryland (Floetter); Department of Pathology, Penn State College of Medicine, Hershey, Pennsylvania (Gerhard); Department of Neurology, University of Utah School of Medicine, Salt Lake City (Gibson, Pulst); Department of Neurology, Emory University School of Medicine, Atlanta, Georgia (Jonathan D. Glass); Department of Molecular Neuroscience and Reta Lila Weston Laboratories, Institute of Neurology, University College London, London, United Kingdom (Hardy, Sidle, Traynor); Department of Neurology, Columbia University, New York, New York (Harms); Department of Neurology, Drexel University College of Medicine, Philadelphia, Pennsylvania (Heiman-Patterson); Department of Neurology, Temple University, Philadelphia, Pennsylvania (Heiman-Patterson); Department of Neurology, University of Helsinki, Helsinki, Finland (Jansson, Laaksovirta, Tienari, Valori); Department of Neurology, Veterans Affairs Boston Healthcare System, Boston, Massachusetts (Kowall); Cell Biology and Gene Expression Section, Laboratory of Neurogenetics, National Institute on Aging, Bethesda, Maryland (Landeck, N. Smith); Department of Geriatrics, Neurosciences and Orthopedics, Center for Geriatric Medicine, Catholic University of Sacred Heart, Rome, Italy (Landi); INM, INSERM, University of Montpellier, CHU Nîmes, Nîmes, France (Lumbroso, Mouzat); Neuromuscular Division and ALS Center, Beth Israel Medical Center, Albert Einstein College of Medicine, New York, New York (MacGowan); Department of Neurology, Johns Hopkins University, Baltimore, Maryland (Maragakis, Ostrow, Rothstein, Scholz, Traynor); ALS Center, ICS Mageri, IRCCS, Milan, Italy (Gabriele Mora); Department of Pathology, Haartman Institute/HUSLAB, University of Helsinki and Folkhalsan Research Center (LM), Helsinki, Finland (Myllykangas); Data Tecnica International, Glen Echo, Maryland (Nalls); Department of Clinical

Neuroscience, Institute of Neurology, University College London, London, United Kingdom (Orrell); Discipline of Pathology, Brain and Mind Centre, University of Sydney, Camperdown, Australia (Pamphlett); Faculty of Human and Medical Sciences, University of Manchester, Manchester, United Kingdom (Pickering-Brown, Rollinson); Department of Neurology, Cleveland Clinic, Cleveland, Ohio (Pioro); Clinical and Neuropathology Core, Johns Hopkins University, Baltimore, Maryland (Pletnikova, Troncoso); Department of Neuroscience, Experimental Neurology and Leuven Research Institute for Neuroscience and Disease, University of California San Diego, La Jolla (Ravits); Nash Family Department of Neuroscience, Ronald M. Loeb Center for Alzheimer’s Disease, Icahn School of Medicine at Mount Sinai, New York, New York (Renton); Department of Neurosciences, Experimental Neurology and Leuven Research Institute for Neuroscience and Disease, University of Leuven, Leuven, Belgium (Robberecht, Van Damme, Van Den Bosch); Tanz Centre for Research of Neurodegenerative Diseases, University of Toronto, Toronto, Ontario, Canada (Rogaeva); Department of Neurology, Institute for Clinical Neurobiology, University of Würzburg, Würzburg, Germany (Sendtner); Department of Neurology, Penn State College of Medicine, Hershey, Pennsylvania (Simmons); VIB, Center for Brain & Disease Research, Laboratory of Neurobiology, University of Leuven, Leuven, Belgium (Van Damme); Department of Pathology and Laboratory Medicine, University of Pennsylvania, Philadelphia (Van Deerlin); Division of Neurology, Sunnybrook Health Sciences Centre, University of Toronto, Toronto, Ontario, Canada (Zinman); Department of Neurology, University of Massachusetts Medical School, Worcester (John E. Landers); Rita Levi Montalcini’ Department of Neuroscience, University of Turin, Turin, Italy (Adriano Chiò, Brunetti, Calvo, Canosa, Casale, Adriano Chiò, DeMarco, Fuda, Gallone, Grassano, Iazzolino, Manera, Moglia, Salamone, Vasta); Neuroscience Institute of Torino, University of Turin, Turin, Italy (Adriano Chiò, Ausiello); National Institute of Neurological Disorders and Stroke, Bethesda, Maryland (Traynor); Neurology Unit, AV4 ASUR Marche, Fermo, Italy (Angelocola, Cardinali); Department of Medical Genetic, Azienda Ospedaliero Universitaria Città della Salute e della Scienza, Torino, Italy (Barberis, Sbaiz); Center for Diagnosis and Cure of Rare Diseases, Department of Neurology, IRCCS Institute of Neurological Sciences, Bologna, Italy (Bartolomei, Salvi, Vacchiano); Department of Medical, Surgical and Neurological Sciences, University of Siena, Siena, Italy (Battistini, Giannini, Ricci, Riolo); 3rd Neurology Unit and Motor Neuron Diseases Centre, IRCCS Foundation ‘Carlo Besta’ Neurological Institute, Milan, Italy (Bersano, Dalla Bella, Giuseppe Lauria); NeuroMuscular Omnicentre (NEMO), Serena Onlus, Foundation Pol. A. Gemelli, Roma, Italy (Bisogni, Conte); Neurologic Unit, Monserrato University Hospital, Cagliari University, Cagliari, Italy (Borghero, Cuccu, Floris, Murru, Tranquilli); Department of Neurosciences, Rehabilitation, Ophthalmology, Genetics and Maternal-Child Sciences, IRCCS Ospedale Policlinico San Martino, Genoa, Italy (Cabona, Caponnetto, Ferraro, Mandich, Origone); Division of Neurology, Azienda Ospedaliero-Universitaria Città della Salute e della Scienza di Torino, Torino, Italy (Calvo,

Canosa, Adriano Chiò, Moglia); Department of Advanced Medical and Surgical Sciences, University of Campania "Luigi Vanvitelli," Caserta, Italy (Canale); Struttura complessa di Neurofisiopatologia, Azienda Ospedaliera di Perugia, Perugia, Italy (Cantisani); Unit of Neurology, Ospedale Clinizzato SS Annunziata, Chieti, Italy (Capasso); Unit of Genomics for the Diagnosis of Human Pathologies, IRCCS San Raffaele Scientific Institute, Milan, Italy (Carrera); ALS Clinical Research Center, BiND, University of Palermo, Palermo, Italy (Colletti, La Bella, Spataro); Department of Pharmacy, Health and Nutritional Sciences, University of Calabria, Rende, Italy (Conforti); Neurology Unit, "San Gerardo" Hospital, Monza, Italy (Conti, Ferrarese, Tremolizzo); School of Medicine and Surgery and Milan Center for Neuroscience (NeuroMI), University of Milano-Bicocca, Milan, Italy (Conti, Ferrarese, Tremolizzo); Department of Neurorehabilitation Sciences, Casa Cura Policlinico, Milan, Italy (Corbo); Department of Basic Medical Sciences, Neurosciences and Sense Organs, University of Bari "Aldo Moro," Policlinico, Bari, Italy (D'Errico, Introna, Simone); Department of Neurosciences, Reproductive Sciences and Odontostomatology, University of Naples Federico II, Napoli, Italy (Dubbioso, Manganelli); Neurology Unit and Rehabilitation Unit, IRCCS "San Raffaele Scientific Institute," Milan, Italy (Filippi); Neuroimaging Research Unit, Division of Neuroscience, IRCCS "San Raffaele Scientific Institute," Milan, Italy (Filippi); Neurophysiology Service, IRCCS "San Raffaele Scientific Institute," Milan, Italy (Filippi); Vita-Salute San Raffaele University, Milan, Italy (Filippi); Department of Neurosciences, Ospedale Civile S. Agostino Estense, Azienda Ospedaliero Universitaria di Modena, Modena, Italy (Fini, Gianferrari, Mandrioli, Martinelli, Simonini, Zucchi); NeuroMuscular Omniculture (NEMO) Clinical Center Milano, Fondazione Serena Onlus, Milan, Italy (Greco, Lunetta, Pozzi, Salivetto); Genetica Medica, Fondazione Policlinico Universitario A. Gemelli IRCCS, Roma, Italy (Lattante, Marangi); Dipartimento Universitario Scienze della Vita e Sanità Pubblica, Sezione di Medicina Genomica, Università Cattolica del Sacro Cuore Facoltà di Medicina e Chirurgia, Roma, Italy (Lattante, Marangi); Department of Biomedical and Clinical Sciences Luigi Sacco, University of Milan, Milan, Italy (Giuseppe Lauria); Department of Biomedical and Neuromotor Sciences, University of Bologna, Bologna, Italy (Liguori); Department of Basic Medical Sciences, Neuroscience and Sense Organs, University of Bari Aldo Moro, Bari, Italy (Logroscino); Center for Neurodegenerative Diseases and the Aging Brain, Department of Clinical Research in Neurology, Pia Fondazione Cardinale G. Panico, Tricase, Italy (Logroscino); Neurology Unit, AV3, ASUR Marche, Macerata, Italy (Logullo, Petrelli); Medical Genetics Unit, IRCCS Ospedale Policlinico San Martino, Genoa, Italy (Mandich); Department of Neurorehabilitation, Istituti Clinici Scientifici Mauderi IRCCS, Institute of Milan, Milan, Italy (Marinou, Gabriele Mora, Sideri); Department of Neurology, Azienda Universitario Ospedaliera di Cagliari and University of Cagliari, Cagliari, Italy (Marrosu); NeuroMuscular Omniculture (NEMO) Sud, Fondazione Aurora, OUC Neurology and Neuromuscular Disorders, University of Messina, Messina, Italy (Messina); Department of Laboratory Medicine, Medical Genetics, Niguarda Ca' Granda Hospital, Milan, Italy

(Mosca); Department of Advanced Medical and Surgical Sciences, University of Campania "Luigi Vanvitelli," Napoli, Italy (Passaniti, Tedeschi, Trojsi); Neurology Department, San Camillo Hospital, Roma, Italy (Petrucci); Department of Biomedical and Surgical Sciences, Section of Neurological, Psychiatric and Psychological Sciences, University of Ferrara, Ferrara, Italy (Pugliatti); Department of Neurology, IRCCS "San Raffaele Scientific Institute," Milan, Italy (Quattrini, Riva); OUC Neurology and Neuromuscular Disorders, University of Messina, Messina, Italy (Russo, Vita); NeuroMuscular Omniculture (NEMO)-Fondazione Policlinico Universitario A. Gemelli, Università Cattolica del Sacro Cuore, Roma, Italy (Sabatelli); Department of Medicine, Azienda Complesso Ospedaliero, San Filippo Neri, Roma, Italy (Santarelli); Operative Unit of Neurology, S. Chiara Hospital, Trento, Italy (Tanel); Department of Neurology, Azienda Ospedaliera San Francesco, Nuoro, Italy (Ticca); ALS Center, Operative Unit of Neurology, AOU "San Giovanni di Dio e Ruggi d'Aragona," Salerno, Italy (Torriello); Neurorehabilitation Unit-ALS Center, Istituti Clinici Scientifici (ICS) Mauderi, Mistretta, Italy (Volanti); Sezione di Medicina Genomica, Dipartimento Scienze della Vita e Sanità Pubblica, Facoltà di Medicina e Chirurgia, Università Cattolica Sacro Cuore, Roma, Italy (Zollino); Unità di Genetica Medica, Fondazione Policlinico Universitario A. Gemelli IRCCS, Roma, Italy (Zollino).

Author Contributions: Dr Traynor had full access to all of the data in the study and takes responsibility for the integrity of the data and the accuracy of the data analysis. Drs Johnson, Chia, Miller, Li, Kumaran, Abramzon, Alahmady, Basak, Landers, Chiò, Crawford, B. Smith, and Traynor contributed equally to this article.

Study concept and design: Chia, Kumaran, Abramzon, Cookson, Al Khleifat, Gotkine, I. Glass, Landers, Chiò, Crawford, B. Smith, Traynor, Arepalli, Fallini, Cereda, Pollard, Campbell, Hardy, Laaksovirta, Singleton, Van Deerlin, Ceroni, García-Redondo, Cantisani, Cardinali, Logroscino, Lunetta, Origone, Brice, Ricci, Riolo, Salivetto.
Acquisition, analysis, or interpretation of data: Johnson, Chia, Miller, Li, Kumaran, Abramzon, Alahmady, Renton, Topp, Gibbs, Sabir, Dalgard, Troakes, Jones, Shatunov, Iacoangeli, Al Khleifat, Ticozzi, Silani, Gellera, Blair, Dobson-Stone, Kwok, Bonkowski, Palvadeau, Tienari, Morrison, P. Shaw, Al-Chalabi, Brown, Calvo, Mora, Al Saif, Gotkine, Leigh, Chang, Perlman, I. Glass, Scott, C. Shaw, Başak, Chiò, Crawford, B. Smith, Traynor, Ratti, Soltis, Castellotti, England, Alba, Vance, Brady, Bertolin, Tiloca, Leblond-Manry, Colombrita, Viollet, Bacikova, Hupalo, Stone, Sukumar, Pollard, Wilkerson, Martinez, Baloh, Broach, Camu, Cooper-Knock, Ding, Drepper, Drory, Dunckley, Eicher, Faghri, Feldman, Floeter, Fratta, Geiger, Gerhard, Gibson, J. Glass, Harms, Hernandez, Jansson, Kirby, Kowall, Landi, Le Ber, Lumbroso, MacGowan, Maragakis, Mouzat, Murphy, Myllykangas, Nalls, Orrell, Ostrow, Pamphlett, Pickering-Brown, Pioro, Pliner, Pulst, Ravits, Robberecht, Rogaeva, Rollinson, Rothstein, Scholz, Sendtner, Simmons, Singleton, Troncoso, Valori, Van Damme, Van Deerlin, Van Den Bosch, Zinman, N. Smith, Landeck, Pletnikova, Ahmed, Scotter, Kenna, Keagle, Baas, McLaughlin, Polak, Asress, Esteban-Pérez, Stevic, D'Alfonso, Mazzini, Comi, Del Bo, Ceroni, Gagliardi, Querin, van Rhee, Rademakers, Van Blitterswijk, Duga, Corti, Corrado, Sorarù, Williams, Nicholson, Rouleau, Hardiman, Veldink, van den Berg, Pall, Turner, Talbot, Taroni, Wu, Angelocola, Ausiello, Barberis, Bartolomei, Battistini, Bersano, Borghero, Cabona, Canosa, Capasso, Cardinale, Carrera, Casale, Colletti, Conforti, Conte, Corbo, Cuccu, Dalla Bella, D'Errico, De Marco, Dubbioso, Ferrarese, Ferraro, Filippi, Fini, Floris, Fuda, Gallone, Gianferrari, Giannini, Grassano, Rollinson, Rothstein, Scholz, Sendtner, Simmons, Singleton, Troncoso, Valori, Van Damme, Van Deerlin, Van Den Bosch, Zinman, N. Smith, Landeck, Pletnikova, Ahmed, Scotter, Kenna, Keagle, Baas, McLaughlin, Polak, Asress, Esteban-Pérez, Stevic, D'Alfonso, Mazzini, Comi, Del Bo, Gagliardi, Querin, van Rhee, Rademakers, Van Blitterswijk, Duga, Corti, Corrado,

Sorarù, Williams, Nicholson, Rouleau, Hardiman, Veldink, van den Berg, Pall, Turner, Talbot, Taroni, Wu, Angelocola, Ausiello, Barberis, Bartolomei, Battistini, Bersano, Borghero, Brunetti, Cabona, Canale, Canosa, Capasso, Caponnetto, Carrera, Casale, Colletti, Conforti, Conte, Conti, Corbo, Cuccu, Dalla Bella, D'Errico, De Marco, Dubbioso, Ferrarese, Ferraro, Filippi, Fini, Floris, Fuda, Gallone, Gianferrari, Giannini, Grassano, Greco, Iazzolino, Introna, La Bella, Lattante, Lauria, Liguori, Logullo, Lunetta, Mandich, Mandrioli, Manera, Manganelli, Marangi, Marinou, Marrosu, Martinelli, Messina, Moglia, Mosca, Murru, Passaniti, Petrelli, Petrucci, ten Asbroek, Gkazi, Adeleye, Rivera, King, Bisogni, Pozzi, Pugliatti, Quattrini, Riva, Russo, Sabatelli, Salamone, Salvi, Santarelli, Sbaiz, Sideri, Simone, Simonini, Spataro, Tanel, Tedeschi, Ticca, Toriello, Tranquilli, Tremolizzo, Trojsi, Vacchiano, Vasta, Vita, Volanti, Zollino, Zucchi, Bowser.

Drafting of the manuscript: Chia, Miller, Kumaran, Al Khleifat, Gellera, Kwok, Chang, Crawford, B. Smith, Traynor, Arepalli, Pollard, Campbell, Heiman-Patterson, Laaksovirta, Sidle, Pensato, McKenna-Yasek, Angelocola, Brunetti, Cantisani, Caponnetto, Conti, Floris, Greco, Petrelli, Riva, Salivetto, Sbaiz.

Critical revision of the manuscript for important intellectual content: Johnson, Chia, Li, Kumaran, Abramzon, Alahmady, Renton, Topp, Gibbs, Cookson, Sabir, Dalgard, Troakes, Jones, Shatunov, Iacoangeli, Al Khleifat, Ticozzi, Silani, Blair, Dobson-Stone, Bonkowski, Palvadeau, Tienari, Morrison, P. Shaw, Al-Chalabi, Brown, Calvo, Mora, Al Saif, Gotkine, Leigh, Perlman, I. Glass, Scott, C. Shaw, Başak, Landers, Chiò, Crawford, B. Smith, Traynor, Ratti, Soltis, Castellotti, England, Alba, Vance, Fallini, Brady, Bertolin, Tiloca, Leblond-Manry, Colombrita, Viollet, Cereda, Bacikova, Hupalo, Stone, Sukumar, Pollard, Wilkerson, Martinez, Baloh, Broach, Camu, Cooper-Knock, Ding, Drepper, Drory, Dunckley, Eicher, Faghri, Feldman, Floeter, Fratta, Geiger, Gerhard, Gibson, J. Glass, Hardy, Harms, Hernandez, Jansson, Kirby, Kowall, Landi, Le Ber, Lumbroso, MacGowan, Maragakis, Mouzat, Murphy, Myllykangas, Nalls, Orrell, Ostrow, Pamphlett, Pickering-Brown, Pioro, Pliner, Pulst, Ravits, Robberecht, Rogaeva, Rollinson, Rothstein, Scholz, Sendtner, Simmons, Singleton, Troncoso, Valori, Van Damme, Van Deerlin, Van Den Bosch, Zinman, N. Smith, Landeck, Pletnikova, Ahmed, Scotter, Kenna, Keagle, Baas, McLaughlin, Polak, Asress, Esteban-Pérez, Stevic, D'Alfonso, Mazzini, Comi, Del Bo, Ceroni, Gagliardi, Querin, van Rhee, Rademakers, Van Blitterswijk, Duga, Corti, Corrado, Sorarù, Williams, Nicholson, Rouleau, Hardiman, Veldink, van den Berg, Pall, Turner, Talbot, Taroni, García-Redondo, Wu, Ausiello, Barberis, Bartolomei, Battistini, Bersano, Borghero, Cabona, Canale, Canosa, Capasso, Cardinale, Carrera, Casale, Colletti, Conforti, Conte, Corbo, Cuccu, Dalla Bella, D'Errico, De Marco, Dubbioso, Ferrarese, Ferraro, Filippi, Fini, Floris, Fuda, Gallone, Gianferrari, Giannini, Grassano, Iazzolino, Introna, La Bella, Lattante, Lauria, Liguori, Logroscino, Logullo, Lunetta, Mandich, Mandrioli, Manera, Manganelli, Marangi, Marinou, Marrosu, Martinelli, Messina, Moglia, Mosca, Murru, Origone, Passaniti, Petrucci, ten Asbroek, Gkazi, Adeleye, Rivera, Brice, King, Bisogni, Pozzi, Pugliatti, Quattrini, Ricci, Riolo, Riva, Russo, Sabatelli, Salamone, Salvi, Santarelli, Sideri, Simone, Simonini, Spataro, Tanel, Tedeschi, Ticca, Toriello,

Tranquilli, Tremolizzo, Trojsi, Vacchiano, Vasta, Vita, Volanti, Zollino, Zucchi, Bowser.

Statistical analysis: Johnson, Chia, Kumaran, Abramzon, Topp, Gibbs, Sabir, Calvo, Traynor, England, Pollard, Martinez, Ding, Faghri, Geiger, Nalls, Tranquilli.

Obtained funding: Kwok, Al-Chalabi, Gotkine, C. Shaw, Traynor, Stone, Hollar, Hardy, Kowall, Pulst, Rogaeva, Baas, Stevic, D'Alfonso, van den Berg, Taroni, Gallone.

Administrative, technical, or material support: Chia, Gibbs, Dalgard, Troakes, Jones, Iacoangeli, Al Khleifat, Tienari, Morrison, Al-Chalabi, Brown, Gotkine, Perlman, I. Glass, Scott, C. Shaw, Başak, Landers, Crawford, B. Smith, Traynor, Ratti, Soltis, Castellotti, Alba, Brady, Hlot, Viollet, Bacikova, Hupaló, Sukumar, Pollard, Wilkerson, Camu, Cooper-Knock, Drepper, Dunckley, Eicher, Fratta, Geiger, Gibson, J. Glass, Hernandez, Jansson, Kirby, Kowall, Laaksovirta, MacGowan, Maragakis, Murphy, Myllykangas, Nalls, Orrell, Ostrow, Pamphlett, Pickering-Brown, Pioro, Rollinson, Rothstein, Scholz, Sendtner, Sidle, Simmons, Van Deerlin, Zinman, N. Smith, Landeck, Pletnikova, Keagle, Baas, McKenna-Yasek, Asress, D'Alfonso, Del Bo, Gagliardi, Corrado, Rouleau, García-Redondo, Angelocola, Barberis, Bersano, Canale, Canosa, Casale, Conti, Cuccu, Dalla Bella, De Marco, Dubbioso, Floris, Fuda, Grassano, Introna, Lauria, Mandrioli, Manera, Murru, ten Asbroek, Gkazi, Adeleye, Brice, King, Pugliatti, Riva, Zollino, Bowser.

Study supervision: Cookson, Silani, Blair, Tienari, Al-Chalabi, Leigh, I. Glass, C. Shaw, Landers, Chiò, Traynor, Fallini, Baloh, MacGowan, Nalls, Scholz, Mazzini, Ceroni, Taroni, Ausiello, Cabona, Caponnetto, Cardinali, Ferraro, Floris, Logroscino, Logullo, Manganelli, Marinou, Marrosu, Messina, Riva, Russo, Simone, Tedeschi, Vita.

Conflict of Interest Disclosures: Drs Tienari and Traynor hold the US, Canadian, and European patents on the clinical testing and therapeutic intervention for the hexanucleotide repeat expansion in *C9orf72*. Dr Chiò serves on scientific advisory boards for Biogen Idec, Cytokinetix, Italfarmaco, and Neuraltus. Dr Al-Chalabi reports consultancies for Biogen Idec, Cytokinetix Inc, OrionPharma, Chronos Therapeutics, and Mitsubishi-Tanabe Pharma. Dr Landers is a member of the scientific advisory board for Cerevel Therapeutics and a consultant and provides expert testimony for Perkins Coie. Dr Topp reports grants from UK Dementia Research Institute during the conduct of the study. Dr Dobson-Stone reports grants from National Health and Medical Research Council of Australia during the conduct of the study. Dr Kwok reports grants from National Health and Medical Research Council during the conduct of the study. Dr Tienari reports grants from Sigrid Juselius Foundation and Helsinki University Hospital during the conduct of the study. Dr Al-Chalabi reports grants from the UK Medical Research Council during the conduct of the study and has consulted for Biogen Idec, OrionPharma, Amylyx, BrainStorm, Mitsubishi Tanabe Pharma, Cytokinetix, and Apellis outside the submitted work. Dr Landers reports grants from the ALS Association and National Institute of Neurological Disorders and Stroke during the conduct of the study as well as personal fees from Cerevel Therapeutics and Perkins Coie outside the submitted work. Dr Chiò reports personal fees from Biogen Scientific and Cytokinetix Scientific outside the submitted work.

Dr Traynor reports institutional support from Intramural Program of the National Institutes of Health; and grants from Packard Center, ALS Association, and Muscular Dystrophy Association during the conduct of the study; grants from Myasthenia Gravis foundation, Merck, US Centers for Disease Control and Prevention, US Veterans Administration, and Microsoft Research outside the submitted work; and is on the editorial board of *JAMA Neurology*; *Journal of Neurology*, *Neurosurgery*, and *Psychiatry*; *Neurobiology of Aging*; and *Brain*. Dr Stone is an employee of Cerevel Therapeutics. Dr Pollard reports grants from the National Institutes of Health during the conduct of the study. Dr Baloh is employed by Roche Pharmaceuticals. Dr Eicher is an employee of Merck and GlaxoSmithKline. Dr Faghri reports personal fees from National Institutes of Health outside the submitted work. Dr Feldman reports grants from the National Institutes of Health, US Centers for Disease Control and Prevention/ Agency for Toxic Substances and Disease Registry, Novo Nordisk Foundation, and JDRF and personal fees from Novartis outside the submitted work. Dr Geiger reports personal fees from the National Institutes of Health during the conduct of the study. Dr Harms reports grants from Biogen, ALS Association, and Project ALS during the conduct of the study as well as personal fees from Invitae and VariantBio outside the submitted work. Dr Heiman-Patterson reports grants from Mitsubishi Tanabe America and personal fees from Samus, Cytokinetix, ITF, and Orion outside the submitted work. Dr Le Ber reports grants from PHRC FTLD-exome and Investissements d'avenir during the conduct of the study as well as personal fees from Prevail Therapeutics and Alector outside the submitted work. Dr Maragakis reports grants from US Department of Defense and Answer ALS during the conduct of the study. Dr Murphy reports salary support from National Institute on Aging during the conduct of the study. Dr Nalls reports support from the National Institutes of Health. Dr Orrell reports grants from Motor Neurone Disease Association during the conduct of the study. Dr Ostrow reports grants from Target ALS Foundation during the conduct of the study and grants from ALS Association outside the submitted work. Dr Rothstein reports grants from Calico Therapeutics and GlaxoSmith Kline; personal fees from Expansion Therapeutics; and nonfinancial support from Ionis Pharmaceuticals outside the submitted work. Dr Scholz reports serving on editorial boards of the *Journal of Parkinson's Disease*, *Frontiers in Neurology*, *Frontiers in Neuroscience*, *Frontiers in Psychiatry*, and *JAMA Neurology*. Dr Simmons reports personal fees from Biogen, Amylyx, and Alexion and grants from MT Pharma outside the submitted work. Dr Troncoso reports grants from the National Institutes of Health Alzheimer's Disease Research Center during the conduct of the study. Dr Van Damme reports grants from CSL Behring and fees from Biogen, Alexion Pharmaceuticals, Ferrer, QurAlis, and Argenx paid to his institution outside the submitted work. Dr Baas reports personal fees from ComplementPharma outside the submitted work. Dr Hardiman reports grants from Science Foundation Ireland during the conduct of the study as well as personal fees from Taylor & Francis outside the submitted work. Dr Veldink reports grants from Biogen outside the submitted work. Dr van den Berg reports grants

from Netherlands ALS Foundation during the conduct of the study. Dr Turner reports grants from Motor Neurone Disease Association as well as personal fees from Orphazyme, Oxford University Press, and BMA Journals outside the submitted work. Dr Taroni reports grants from Italian Ministry of Health during the conduct of the study as well as grants from Italian Ministry of Health and Fondazione Regionale per la Ricerca Biomedica (FRRB) outside the submitted work. Dr Corbo reports personal fees from Biogen outside the submitted work. Dr Filippi reports personal fees from Almiral, Alexion, Bayer, Biogen, Celgene, Eli Lilly, Genzyme, Merck-Serono, Novartis, Roche, Sanofi, Takeda, and Teva; grants from Biogen, Merck-Serono, Novartis, Roche, and Teva outside the submitted work; and is Editor-in-Chief of the *Journal of Neurology* and Associate Editor of *Human Brain Mapping*. Dr Liguori reports personal fees from ARGENX BV outside the submitted work. Dr Mandrioli reports nonfinancial support from Pfizer outside the submitted work. Dr Brice reports grants from Institut de France Prix de Recherche Allianz 2018, ANR-EPIC, France Parkinson + FRC, and APHP Extraction d'ADN à partir de prélèvements sanguins, conservation des échantillons d'ADN extraits et distributions d'aliquote d'ADN pour analyse outside the submitted work. Dr Bisogni reports personal fees from Alnylam outside the submitted work. Dr Tedeschi reports grants from Roche, Biogen, Allergan, Merck, Novartis, and Lilly outside the submitted work. Dr Bowser reports personal fees from Iron Horse Diagnostics outside the submitted work. No other disclosures were reported.

Funding/Support: This work was supported in part by the Intramural Research Programs of the National Institute on Aging (grant Z01-AGO00949-02) and National Institute of Neurological Disorders and Stroke (grant ZIA-NS03154). The work was also funded by the Packard Center for ALS Research at Johns Hopkins, the ALS Association (grant 20-SI-508), the Muscular Dystrophy Association, the Italian Ministry of Health (grant RF-2016-02362405), the Italian Ministry of Education, University and Research (Progetti di Ricerca di Rilevante Interesse Nazionale [PRIN]; grant 2017SNW5MB), the Joint Programme-Neurodegenerative Disease Research (JPND; Brain-Mend projects) granted by Italian Ministry of Education, University and Research, and by the European Community's Health Seventh Framework Programme (FP7/2007-2013; grant agreements 259867 and 278611), by the National Institute of Neurological Disorders and Stroke (grants R35 NS097261, R01NS073873, and R56NS073873), and by the Collaborative Health Initiative Research Program. This study was performed under the Department of Excellence grant of the Italian Ministry of Education, University and Research to the 'Rita Levi Montalcini' Department of Neuroscience, University of Torino, Italy. Additional funding was also provided by the Motor Neurone Disease Association (MNDA), the Medical Research Council, the Medical Research Foundation (MRF), the Van Geest Foundation, The Psychiatry Research Trust of the Institute of Psychiatry, Guy's and St. Thomas' Charity and the Noreen Murray Foundation, the Sigrid Juselius Foundation, the UK Dementia Research Institute, the National Health and Medical Research Council of Australia (grants 1095215 and 1092023), and through the following funding organization under

the aegis of JPND: UK Medical Research Council (grants MR/L501529/1 and MR/R024804/1). This work was supported by the Canadian Consortium on Neurodegeneration in Aging, UK Dementia Research Institute, which is funded by the Medical Research Council, Alzheimer's Society and Alzheimer's Research UK. Dr Al-Chalabi is supported by the National Institute for Health Research (NIHR) Maudsley Biomedical Research Centre. Dr P. Shaw is supported as an NIHR Senior Investigator and by the Sheffield NIHR Biomedical Research Centre. Dr Dobson-Stone is supported by the Australian National Health and Medical Research Council (NHMRC) Boosting Dementia Research Leadership Fellowship 1138223 and by the University of Sydney. Dr Kwok is supported by NHMRC Dementia Research Team Grant 1095127. The Alzheimer's Disease Sequencing Project (ADSP) is comprised of 2 Alzheimer's Disease (AD) genetics consortia and 3 National Human Genome Research Institute (NHGRI)-funded Large-Scale Sequencing and Analysis Centers (LSAC). The 2 AD genetics consortia are the Alzheimer's Disease Genetics Consortium (ADGC) funded by National Institute on Aging grant U01 AG032984, and the Cohorts for Heart and Aging Research in Genomic Epidemiology (CHARGE) funded by National Institute on Aging grant R01 AG033193, the National Heart, Lung, and Blood Institute, other National Institutes of Health institutes, and other foreign governmental and nongovernmental organizations. The Discovery Phase analysis of sequence data is supported through UFIAGO47133 to Drs Schellenberg, Farrer, Pericak-Vance, Mayeux, and Haines; U01AG049505 to Dr Seshadri; U01AG049506 to Dr Boerwinkle; U01AG049507 to Dr Wijsman; and U01AG049508 to Dr Goate. The Discovery Extension Phase analysis is supported through U01AG052411 to Dr Goate, U01AG052410 to Dr Pericak-Vance, and U01 AG052409 to Drs Seshadri and Fornage. Data generation and harmonization in the Follow-up Phases is supported by U54AG052427 (to Drs Schellenberg and Wang). The ADGC cohorts include Adult Changes in Thought (ACT), the Alzheimer's Disease Centers (ADC), the Chicago Health and Aging Project (CHAP), the Memory and Aging Project (MAP), Mayo Clinic, Mayo Parkinson's Disease controls, University of Miami, the Multi-Institutional Research in Alzheimer's Genetic Epidemiology Study (MIRAGE), the National Cell Repository for Alzheimer's Disease (NCRAD), the National Institute on Aging Late Onset Alzheimer's Disease Family Study (NIA-LOAD), the Religious Orders Study (ROS), the Texas Alzheimer's Research and Care Consortium (TARC), Vanderbilt University/Case Western Reserve University (VAN/CWRU), the Washington Heights-Inwood Columbia Aging Project (WHICAP) and the Washington University Sequencing Project (WUSP), the Columbia University Hispanic-Estudio Familiar de Influenza Genetica de Alzheimer (EFIGA), the University of Toronto, and Genetic Differences (GD). The CHARGE cohorts are supported in part by National Heart, Lung, and Blood Institute infrastructure grant HL105756 (Psaty), RC2HL102419 (Boerwinkle), and the Neurology Working Group is supported by the National Institute on Aging R01 grant AG033193. The CHARGE cohorts participating in the ADSP include the following: Austrian Stroke Prevention Study (ASPS), ASPS-Family study, and the Prospective Dementia Registry-Austria (ASPS/PRODEM-Aus),

the Atherosclerosis Risk in Communities (ARIC) Study, the Cardiovascular Health Study (CHS), the Erasmus Rucphen Family Study (ERF), the Framingham Heart Study (FHS), and the Rotterdam Study (RS). ASPS is funded by the Austrian Science Fund (FWF) grants P20545-P05 and P13180 and the Medical University of Graz. The ASPS-Fam is funded by the Austrian Science Fund (FWF) project I904, the EU Joint Programme-Neurodegenerative Disease Research (JPNDR) in frame of the BRIDGET project (Austria, Ministry of Science) and the Medical University of Graz and the Steiermärkische Krankenanstalten Gesellschaft. PRODEM-Austria is supported by the Austrian Research Promotion agency (FFG) (project 827462) and by the Austrian National Bank (Anniversary Fund; project 15435). ARIC research is carried out as a collaborative study supported by National Heart, Lung, and Blood Institute contracts (HHSN268201100005C, HHSN268201100006C, HHSN268201100007C, HHSN268201100008C, HHSN268201100009C, HHSN268201100010C, HHSN268201100011C, and HHSN268201100012C). Neurocognitive data in ARIC is collected by U01 2U01HL096812, 2U01HL096814, 2U01HL096899, 2U01HL096902, and 2U01HL096917 from the National Institutes of Health, and with previous brain magnetic resonance imaging examinations funded by R01-HL70825 from the National Heart, Lung, and Blood Institute. CHS research was supported by contracts HHSN268201200036C, HHSN268200800007C, N01HC55222, N01HC85079, N01HC85080, N01HC85081, N01HC85082, N01HC85083, and N01HC85086 and grants U01HL080295 and U01HL130114 from the National Heart, Lung, and Blood Institute, with additional contribution from the National Institute of Neurological Disorders and Stroke. Additional support was provided by R01AG023629, R01AG15928, and R01AG20098 from the National Institute on Aging. FHS research is supported by National Heart, Lung, and Blood Institute contracts N01-HC-25195 and HHSN268201500001I. This study was also supported by additional grants from the National Institute on Aging (R01s AG054076, AG049607, and AG033040) and National Institute of Neurological Disorders and Stroke (R01 NS017950). The ERF study as a part of EUROSPAN (European Special Populations Research Network) was supported by European Commission FP6 STRP grant 018947 (LSHG-CT-2006-01947) and also received funding from the European Community's Seventh Framework Programme (FP7/2007-2013) and grant agreement HEALTH-F4-2007-201413 by the European Commission under the programme "Quality of Life and Management of the Living Resources" of 5th Framework Programme (No. QL2-CT-2002-01254). High-throughput analysis of the ERF data was supported by a joint grant from the Netherlands Organization for Scientific Research and the Russian Foundation for Basic Research (NWO-RFBR 047.017.043). The Rotterdam Study is funded by Erasmus Medical Center and Erasmus University, Rotterdam, the Netherlands Organization for Health Research and Development (ZonMw), the Research Institute for Diseases in the Elderly (RIDE), the Ministry of Education, Culture and Science, the Ministry for Health, Welfare and Sports, the European Commission (DG XII), and the municipality of Rotterdam. Genetic data sets are also supported by the Netherlands Organization of Scientific Research NWO Investments (175.010.2005.011; 911-03-012),

the Genetic Laboratory of the Department of Internal Medicine, Erasmus MC, the Research Institute for Diseases in the Elderly (014-93-015; RIDE2), and the Netherlands Genomics Initiative (NGI)/Netherlands Organization for Scientific Research (NWO) Netherlands Consortium for Healthy Aging (NCHA; project 050-060-810). All studies are grateful to their participants, faculty, and staff. The content of these articles is solely the responsibility of the authors and does not necessarily represent the official views of the National Institutes of Health or the US Department of Health and Human Services. The 4 Large-Scale Sequencing and Analysis Centers are the Human Genome Sequencing Center at the Baylor College of Medicine (U54 HG003273), the Broad Institute Genome Center (U54HG003067), The American Genome Center at the Uniformed Services University of the Health Sciences (U01AG057659), and the Washington University Genome Institute (U54HG003079). Biological samples, and associated phenotypic data used in primary data analyses were stored at study investigators' institutions and at the National Cell Repository for Alzheimer's Disease (NCRAD; U24AG021886) at Indiana University funded by National Institute on Aging. Associated phenotypic data used in primary and secondary data analyses were provided by study investigators, the National Institute on Aging-funded Alzheimer's Disease Centers (ADCs), and the National Alzheimer's Coordinating Center (NACC; U01AG016976) and the National Institute on Aging Genetics of Alzheimer's Disease Data Storage Site (NIAGADS; U24AG041689) at the University of Pennsylvania, funded by the National Institute on Aging, and at the Database for Genotypes and Phenotypes (dbGaP; phs000572) funded by National Institutes of Health. This research was supported in part by the Intramural Research Program of the National Institutes of Health, National Library of Medicine. Contributors to the Genetic Analysis Data included study investigators on projects that were individually funded by the National Institute on Aging and other National Institutes of Health institutes, and by private US organizations or foreign governmental or nongovernmental organizations. Drs Tricozzi, Silani, and Gellera were financially supported by the Italian Ministry of Health (grant RF-201302355764). Ms Palvadeau and Dr Basak's research was funded by Suna and Inan Kirac Foundation, grant 2005-2023. The American Genome Center is supported by National Heart, Lung, and Blood Institute grant IAA-A-HL-007.001, the Defense Health Agency, and the Henry M. Jackson Foundation for the Advancement of Military Medicine.

Role of the Funder/Sponsor: The funders had no role in the design and conduct of the study; collection, management, analysis, and interpretation of the data; preparation, review, or approval of the manuscript; and decision to submit the manuscript for publication.

Disclaimer: The opinions and assertions expressed herein are those of the author(s) and do not necessarily reflect the official policy or position of the Uniformed Services University or the US Department of Defense.

Additional Contributions: We thank patients 1 and 4 and the parents of patient 3 for granting permission to publish this information. We thank the patients and their families for their participation

in our research. We also thank Kirsty McWalter, MS, and other staff of GeneDx, Gaithersburg, Maryland, for their assistance. This study used DNA samples, genotype data, and clinical data from the National Institute of Neurological Disorders and Stroke Repository at Coriell, the New York Brain Bank—The Taub Institute, Columbia University, Department of Veterans Affairs Biorepository Brain Bank (grant BX002466), the Baltimore Longitudinal Study of Aging, the Johns Hopkins University Alzheimer's Disease Research Center (National Institutes of Health grant P5OAG05146), the National Institute of Child Health and Human Development Brain and Tissue Bank for Developmental Disorders at the University of Maryland, the MRC London Neurodegenerative Diseases Brain Bank, King's College London, and the Alzheimer's Disease Sequencing Project. Samples used in this research were obtained from the UK MND Collections funded by the MND Association and the Wellcome Trust. We thank the Suna and Inan Kirac Foundation for its dedicated mentorship and sustained support. We also thank the Koc University, Jan Veldink, MD (Department of Neurology, Brain Center Rudolf Magnus, University Medical Center Utrecht, Utrecht, the Netherlands), the Project MinE sequencing Consortium, Irmak Sahbaz, BSc, and Muge Kovancilar-Koc, MSc (Suna and Inan Kirac Foundation, Neurodegeneration Research Laboratory, KUTTAM, School of Medicine, Koc University, Istanbul, Turkey), the Neurodegeneration Research Laboratory staff, and the Laboratory of Neurogenetics (National Institutes of Health) staff for their collegial support and technical assistance. None of the contributors were compensated for their work.

REFERENCES

- Chiò A, Logroscino G, Traynor BJ, et al. Global epidemiology of amyotrophic lateral sclerosis: a systematic review of the published literature. *Neuroepidemiology*. 2013;41(2):118-130. doi:10.1159/000351153
- Orban P, Devon RS, Hayden MR, Leavitt BR. Chapter 15: juvenile amyotrophic lateral sclerosis. *Handb Clin Neurol*. 2007;82:301-312. doi:10.1016/S0072-9752(07)80018-2
- Chia R, Chiò A, Traynor BJ. Novel genes associated with amyotrophic lateral sclerosis: diagnostic and clinical implications. *Lancet Neurol*. 2018;17(1):94-102. doi:10.1016/S1474-4422(17)30401-5
- Littler M, Morton NE. Segregation analysis of peripheral neurofibromatosis (NF1). *J Med Genet*. 1990;27(5):307-310. doi:10.1136/jmg.27.5.307
- Tuffery-Giraud S, Bérout C, Leturcq F, et al. Genotype-phenotype analysis in 2,405 patients with a dystrophinopathy using the UMD-DMD database: a model of nationwide knowledgebase. *Hum Mutat*. 2009;30(6):934-945. doi:10.1002/humu.20976
- Alexander MD, Traynor BJ, Miller N, et al. "True" sporadic ALS associated with a novel *SOD-1* mutation. *Ann Neurol*. 2002;52(5):680-683. doi:10.1002/ana.10369
- Chiò A, Calvo A, Moglia C, et al. A de novo missense mutation of the *FUS* gene in a "true" sporadic ALS case. *Neurobiol Aging*. 2011;32(3):553.e23-553.e26.
- Acuna-Hidalgo R, Veltman JA, Hoischen A. New insights into the generation and role of de novo mutations in health and disease. *Genome Biol*. 2016;17(1):241. doi:10.1186/s13059-016-1110-1
- Brooks BR, Miller RG, Swash M, Munsat TL; World Federation of Neurology Research Group on Motor Neuron Diseases. El Escorial revisited: revised criteria for the diagnosis of amyotrophic lateral sclerosis. *Amyotroph Lateral Scler Other Motor Neuron Disord*. 2000;1(5):293-299. doi:10.1080/1466608200300079536
- Retterer K, Juusola J, Cho MT, et al. Clinical application of whole-exome sequencing across clinical indications. *Genet Med*. 2016;18(7):696-704. doi:10.1038/gim.2015.148
- Project MinE ALS Sequencing Consortium. Project MinE: study design and pilot analyses of a large-scale whole-genome sequencing study in amyotrophic lateral sclerosis. *Eur J Hum Genet*. 2018;26(10):1537-1546. doi:10.1038/s41431-018-0177-4
- Raczy C, Petrovski R, Saunders CT, et al. Isaac: ultra-fast whole-genome secondary analysis on Illumina sequencing platforms. *Bioinformatics*. 2013;29(16):2041-2043. doi:10.1093/bioinformatics/btt314
- Anderson D, Lassmann T. A phenotype centric benchmark of variant prioritisation tools. *NPJ Genom Med*. 2018;3:5. doi:10.1038/s41525-018-0044-9
- Guo MH, Plummer L, Chan YM, Hirschhorn JN, Lippincott MF. Burden testing of rare variants identified through exome sequencing via publicly available control data. *Am J Hum Genet*. 2018;103(4):522-534. doi:10.1016/j.ajhg.2018.08.016
- Pilpel N, Landeck N, Klugmann M, Seeburg PH, Schwarz MK. Rapid, reproducible transduction of select forebrain regions by targeted recombinant virus injection into the neonatal mouse brain. *J Neurosci Methods*. 2009;182(1):55-63. doi:10.1016/j.jneumeth.2009.05.020
- Auer-Grumbach M, Bode H, Pieber TR, et al. Mutations at Ser331 in the HSN type I gene *SPTLC1* are associated with a distinct syndromic phenotype. *Eur J Med Genet*. 2013;56(5):266-269. doi:10.1016/j.ejmg.2013.02.002
- Bejaoui K, Wu C, Scheffler MD, et al. *SPTLC1* is mutated in hereditary sensory neuropathy, type 1. *Nat Genet*. 2001;27(3):261-262. doi:10.1038/85817
- Dawkins JL, Hulme DJ, Brahmabhatt SB, Auer-Grumbach M, Nicholson GA. Mutations in *SPTLC1*, encoding serine palmitoyltransferase, long chain base subunit-1, cause hereditary sensory neuropathy type I. *Nat Genet*. 2001;27(3):309-312. doi:10.1038/85879
- Merrill AH Jr, Stokes TH, Momin A, et al. Sphingolipidomics: a valuable tool for understanding the roles of sphingolipids in biology and disease. *J Lipid Res*. 2009;50(suppl):S97-S102. doi:10.1194/jlr.R800073-JLR200
- Penno A, Reilly MM, Houlden H, et al. Hereditary sensory neuropathy type 1 is caused by the accumulation of two neurotoxic sphingolipids. *J Biol Chem*. 2010;285(15):11178-11187. doi:10.1074/jbc.M109.092973
- Wilson ER, Kugathasan U, Abramov AY, et al. Hereditary sensory neuropathy type 1-associated deoxysphingolipids cause neurotoxicity, acute calcium handling abnormalities and mitochondrial dysfunction in vitro. *Neurobiol Dis*. 2018;117:1-14. doi:10.1016/j.nbd.2018.05.008
- Nicholson GA. *SPTLC1*-related hereditary sensory neuropathy. In: Adam MP, Ardinger HH, Pagon RA, et al, eds. *GeneReviews*. University of Washington; 2002.
- Gantner ML, Eade K, Wallace M, et al. Serine and lipid metabolism in macular disease and peripheral neuropathy. *N Engl J Med*. 2019;381(15):1422-1433. doi:10.1056/NEJMoa1815111
- Sabourdy F, Astudillo L, Colacios C, et al. Monogenic neurological disorders of sphingolipid metabolism. *Biochim Biophys Acta*. 2015;1851(8):1040-1051. doi:10.1016/j.bbali.2015.01.010
- Haughey NJ, Bandaru VV, Bae M, Mattson MP. Roles for dysfunctional sphingolipid metabolism in Alzheimer's disease neuropathogenesis. *Biochim Biophys Acta*. 2010;1801(8):878-886. doi:10.1016/j.bbali.2010.05.003
- Mitsumoto H, Sliman RJ, Schafer IA, et al. Motor neuron disease and adult hexosaminidase A deficiency in two families: evidence for multisystem degeneration. *Ann Neurol*. 1985;17(4):378-385. doi:10.1002/ana.410170413
- Cutler RG, Pedersen WA, Camandola S, Rothstein JD, Mattson MP. Evidence that accumulation of ceramides and cholesterol esters mediates oxidative stress-induced death of motor neurons in amyotrophic lateral sclerosis. *Ann Neurol*. 2002;52(4):448-457. doi:10.1002/ana.10312
- Garofalo K, Penno A, Schmidt BP, et al. Oral L-serine supplementation reduces production of neurotoxic deoxysphingolipids in mice and humans with hereditary sensory autonomic neuropathy type 1. *J Clin Invest*. 2011;121(12):4735-4745. doi:10.1172/JCI57549
- Fridman V, Suriyanarayanan S, Novak P, et al. Randomized trial of L-serine in patients with hereditary sensory and autonomic neuropathy type 1. *Neurology*. 2019;92(4):e359-e370. doi:10.1212/WNL.0000000000006811
- Levine TD, Miller RG, Bradley WG, et al. Phase I clinical trial of safety of L-serine for ALS patients. *Amyotroph Lateral Scler Frontotemporal Degener*. 2017;18(1-2):107-111. doi:10.1080/21678421.2016.1221971
- Foley AR, Menezes MP, Pandraud A, et al. Treatable childhood neuropathy caused by mutations in riboflavin transporter *RFVT2*. *Brain*. 2014;137(pt 1):44-56. doi:10.1093/brain/awt315
- Boso F, Armirotti A, Taioli F, et al. Deoxysphingolipids as candidate biomarkers for a novel *SPTLC1* mutation associated with HSN-I. *NeuroGenet*. 2019;5(6):e365. doi:10.1212/NXG.0000000000000365