



**HAL**  
open science

## **L-Type Cav1.3 Calcium Channels Are Required for Beta-Adrenergic Triggered Automaticity in Dormant Mouse Sinoatrial Pacemaker Cells**

Julien Louradour, Olivier Bortolotti, Eleonora Torre, Isabelle Bidaud, Ned Lamb, Anne Fernandez, Jean-Yves Le Guennec, Matteo E. Mangoni, Pietro Mesirca

► **To cite this version:**

Julien Louradour, Olivier Bortolotti, Eleonora Torre, Isabelle Bidaud, Ned Lamb, et al.. L-Type Cav1.3 Calcium Channels Are Required for Beta-Adrenergic Triggered Automaticity in Dormant Mouse Sinoatrial Pacemaker Cells. *Cells*, 2022, 11 (7), pp.1114. 10.3390/cells11071114. hal-03628407

**HAL Id: hal-03628407**

**<https://hal.science/hal-03628407>**

Submitted on 2 Apr 2022

**HAL** is a multi-disciplinary open access archive for the deposit and dissemination of scientific research documents, whether they are published or not. The documents may come from teaching and research institutions in France or abroad, or from public or private research centers.

L'archive ouverte pluridisciplinaire **HAL**, est destinée au dépôt et à la diffusion de documents scientifiques de niveau recherche, publiés ou non, émanant des établissements d'enseignement et de recherche français ou étrangers, des laboratoires publics ou privés.

# L-Type $\text{Ca}_v1.3$ Calcium Channels Are Required for Beta-Adrenergic Triggered Automaticity in Dormant Mouse Sinoatrial Pacemaker Cells

Julien Louradour<sup>1,2,3</sup>, Olivier Bortolotti<sup>1,2</sup>, Eleonora Torre<sup>1,2</sup>, Isabelle Bidaud<sup>1,2</sup>, Ned Lamb<sup>4</sup>, Anne Fernandez<sup>4</sup>, Jean-Yves Le Guennec<sup>3</sup>, Matteo E. Mangoni<sup>1,2,\*</sup> and Pietro Mesirca<sup>1,2,\*</sup>

<sup>1</sup> Institut de Génomique Fonctionnelle, Université de Montpellier, CNRS, INSERM, 34090 Montpellier, France; julien.louradour@unibe.ch (J.L.); olivier.bortolotti@etu.umontpellier.fr (O.B.); eleonora.torre@igf.cnrs.fr (E.T.); isabelle.bidaud@igf.cnrs.fr (I.B.)

<sup>2</sup> LabEx Ion Channels Science and Therapeutics (ICST), 34090 Montpellier, France

<sup>3</sup> PhyMedExp, Université de Montpellier, INSERM U1046, UMR CNRS, 34090 Montpellier, France; jean-yves.le-guennec@inserm.fr

<sup>4</sup> Mammalian Stem Cell Biology Group, Institute of Human Genetics, Université de Montpellier, CNRS, 34090 Montpellier, France; ned.lamb@igh.cnrs.fr (N.L.); anne.fernandez@igh.cnrs.fr (A.F.)

\* Correspondence: matteo.mangoni@igf.cnrs.fr (M.E.M.); pietro.mesirca@igf.cnrs.fr (P.M.)

**Abstract:** Background: Sinoatrial node cells (SANC) automaticity is generated by functional association between the activity of plasmalemmal ion channels and local diastolic intracellular  $\text{Ca}^{2+}$  release (LCR) from ryanodine receptors. Strikingly, most isolated SANC exhibit a “dormant” state, whereas only a fraction shows regular firing as observed in intact SAN. Recent studies showed that  $\beta$ -adrenergic stimulation can initiate spontaneous firing in dormant SANC, though this mechanism is not entirely understood. Methods: To investigate the role of L-type  $\text{Ca}_v1.3$   $\text{Ca}^{2+}$  channels in the adrenergic regulation of automaticity in dormant SANC, we used a knock-in mouse strain in which the sensitivity of L-type  $\text{Ca}_v1.2$   $\alpha 1$  subunits to dihydropyridines (DHPs) was inactivated ( $\text{Ca}_v1.2^{\text{DHP}^{-/-}}$ ), enabling the selective pharmacological inhibition of  $\text{Ca}_v1.3$  by DHPs. Results: In dormant SANC,  $\beta$ -adrenergic stimulation with isoproterenol (ISO) induced spontaneous action potentials (AP) and  $\text{Ca}^{2+}$  transients, which were completely arrested with concomitant perfusion of the DHP nifedipine. In spontaneously firing SANC at baseline,  $\text{Ca}_v1.3$  inhibition completely reversed the effect of  $\beta$ -adrenergic stimulation on AP and the frequency of  $\text{Ca}^{2+}$  transients. Confocal calcium imaging of SANC showed that the  $\beta$ -adrenergic-induced synchronization of LCRs is regulated by the activity of  $\text{Ca}_v1.3$  channels. Conclusions: Our study shows a novel role of  $\text{Ca}_v1.3$  channels in initiating and maintaining automaticity in dormant SANC upon  $\beta$ -adrenergic stimulation.

**Keywords:** cardiac pacemaker activity; adrenergic regulation;  $\text{Ca}_v1.3$  channels; ryanodine receptors

## 1. Introduction

Automaticity is a fundamental property of the vertebrate heart. It relies on the spontaneous electrical activity originating from the sinoatrial node (SAN) [1,2]. The automaticity of SAN cells (SANC) is due to diastolic depolarization (DD), a slow depolarizing phase of the action potential (AP) cycle which drives the membrane voltage ( $V_m$ ) from the end of repolarization to the threshold of the following AP [3]. While some aspects of the pacemaker mechanism are still not fully elucidated, there is considerable agreement that SAN pacemaker activity is generated by a complex interplay between ion channels of the plasma membrane and intracellular  $\text{Ca}^{2+}$  cycling [2,4].

Several sarcolemmal ion channels contribute to SANC automaticity and their sequential activation during the DD and AP cycles forms the so-called “*membrane clock*”. Hyperpolarization-activated cyclic nucleotide-gated (HCN4) channels underlying the “funny” current ( $I_f$ ) [5], voltage-gated  $\text{Ca}^{2+}$  channels (VGCCs) [6,7], voltage-dependent

tetrodotoxin (TTX)-sensitive Na<sup>+</sup> channels [8] and transient receptor potential (TRPM and TRPC) [9–11] contribute to automaticity in SANC. Along with sarcolemmal ion channels activation, cyclical spontaneous ryanodine receptor-2 (RyR2)-dependent local Ca<sup>2+</sup> releases (LCRs) from sarcoplasmic reticulum (SR) during DD (“Ca<sup>2+</sup> clock”) also contribute to SANC automaticity [12]. The increase in intracellular calcium [Ca<sup>2+</sup>]<sub>i</sub> by LCRs activates the Na<sup>+</sup>/Ca<sup>2+</sup> exchanger (NCX), resulting in an enhanced inward  $I_{NCX}$  current which accelerates the DD in late diastole. The *membrane (M) clock* and *Ca<sup>2+</sup> clock* are both integrated in the *coupled clock* model of pacemaking, i.e., there is a self-entrainment of the two clocks to achieve sustained automaticity in SANC [4,13]. The *coupled clock* model of pacemaking has been interpreted as an ignition process: along with HCN4 activation, spontaneous LCRs and increased  $I_{NCX}$  depolarize the cell membrane, reaching the threshold for T-type and L-type ( $I_{Ca,T}$  and  $I_{Ca,L}$ , respectively) Ca<sup>2+</sup> currents. These diastolic Ca<sup>2+</sup> influxes in turn activate more LCRs by Ca<sup>2+</sup>-induced Ca<sup>2+</sup> release (CICR) [14]. AP upstroke is then generated when  $V_m$  reaches the threshold for the activation of  $I_{Ca,L}$ , and repolarization is initiated by the inactivation of VGCCs and the activation of delayed outward K<sup>+</sup> currents  $I_{Kr}$  and  $I_{Ks}$  [14]. During the AP upstroke, Ca<sup>2+</sup> influx refills the SR Ca<sup>2+</sup> content via the sarco/endoplasmic reticulum Ca<sup>2+</sup>-ATPase (SERCA), setting an appropriate Ca<sup>2+</sup> load of the SR for diastolic LCRs to occur in the following DD and AP cycle [15]. In the *coupled clock* model of pacemaking,  $\beta$ -adrenergic activation accelerates pacemaker activity by enhancing the coupling of the two clocks in SANC, via an increase in intracellular cyclic adenosine monophosphate (cAMP) levels [4]. cAMP directly enhances  $I_f$  and shifts its voltage dependence towards more depolarized potentials [16]. cAMP-mediated protein kinase A (PKA)-dependent phosphorylations of VGCCs, RyR2, and phospholamban (PLB) augment their activity which ultimately increases the depolarization rate of SANC [2,17].

Recently,  $\beta$ -adrenergic stimulation on isolated SANC was studied in quiescent SANC [18–21]. Kim et al. showed that the majority of isolated SANC from guinea pig hearts were dormant (i.e., with no apparent spontaneous electrical activity) and that  $\beta$ -adrenergic receptor activation can initiate automaticity in these cells, which start firing spontaneously [20]. In addition, dormant SANC and SANC that are spontaneously firing at baseline can reach the same frequency under  $\beta$ -adrenergic stimulation. This  $\beta$ -adrenergic effect was also observed in isolated dormant human SANC [22]. Interestingly, a recent study showed that the chronotropic response is actually different among SANC with various basal firing rates which results, ultimately, in a synchronized average rate for all SANC under  $\beta$ -adrenergic stimulation [23].

We have previously shown that SANC express two distinct isoforms of L-type VGCCs: Ca<sub>v</sub>1.3 and Ca<sub>v</sub>1.2 [24]. These isoforms underlie distinct L-type Ca<sup>2+</sup> currents activating at different voltages. Indeed, while Ca<sub>v</sub>1.3-mediated  $I_{CaL}$  ( $I_{Cav1.3}$ ) activates at negative voltages and supplies an inward current during DD, Ca<sub>v</sub>1.2-mediated  $I_{CaL}$  ( $I_{Cav1.2}$ ) activates at more positive voltages in the range of the AP upstroke phase [6,7,25]. Both Ca<sub>v</sub>1.3 and Ca<sub>v</sub>1.2 are positively regulated by catecholamines [25]. Ca<sub>v</sub>1.3 channels also constitute an essential molecular component of the sustained inward Na<sup>+</sup> current ( $I_{st}$ ) in SANC, which provides an additional mechanism to supply inward current in the DD range [26]. Furthermore, in recent works, we have shown that Ca<sub>v</sub>1.3 channels co-localize with RyR2 in SANC and contribute to the generation of diastolic LCRs [27–29]. Finally, we have shown that intact Ca<sub>v</sub>1.3 is necessary for the SAN impulse to be initiated in the SAN [27], making these channels a potentially important factor in the regulation of automaticity in dormant and spontaneously active SANC upon the activation of  $\beta$ -adrenergic receptors.

Here, we show that L-type Ca<sub>v</sub>1.3 channels are critical for the initiation of pacemaker activity in dormant mouse SANC by  $\beta$ -adrenergic activation. We show that selective pharmacologic inhibition of Ca<sub>v</sub>1.3 channels using mice in which the sensitivity of Ca<sub>v</sub>1.2 channels has been abolished ( $Ca_v1.2^{DHP-/-}$ ) stops the automaticity of dormant SANC, reverses the positive chronotropic effect of isoproterenol (ISO) in spontaneously active SANC, and disrupts the synchronization of LCRs under the  $\beta$ -adrenergic stimulation of pacer-

making. In addition, we suggest that  $\text{Ca}_v1.3$  channels are essential for the recruitment of dormant SANC under  $\beta$ -adrenergic stimulation to reach a synchronized rate among SANC.

## 2. Materials and Methods

All mice used were from the C57BL/6J genetic background. Wild-type (WT) mice were obtained from Charles River and Janvier labs.  $\text{Ca}_v1.2^{\text{DHP}^{-/-}}$  mice, obtained from J. Striessnig's team, were generated by knock-in point mutation in  $\text{Ca}_v1.2$   $\alpha 1$  subunit (T1066Y) [30]. The study is in accordance with the Guide for the Care and Use of Laboratory Animals published by the US National Institute of Health (NIH Publication No. 85-23, revised 1996) and European directives (2010/63/EU). Experimental procedures were approved by the Ethical Committee of the University of Montpellier and the French Ministry of Agriculture (protocol no: 2017010310594939). Animals were housed in the IGF animal facility with free access to food and water and were exposed to 12 h light/dark reverse cycles (light, 8 p.m. to 8 a.m.) in a thermostatically controlled room (21–22 °C).

### 2.1. Single Cell Isolation

SAN pacemaker cells were isolated from both male and female WT and  $\text{Ca}_v1.2^{\text{DHP}^{-/-}}$  mice hearts as previously described [27,31]. Briefly, the heart was excised and immersed in a pre-warmed (36 °C) Tyrode solution containing 140 mM NaCl, 5.4 mM KCl, 1 mM  $\text{MgCl}_2$ , 1.8 mM  $\text{CaCl}_2$ , 5.5 mM D-glucose, and 5 mM Hepes (adjusted to PH 7.4 with NaOH). SAN region was identified using the superior and inferior *vena cava*, the crista terminalis, and the interatrial septum as landmarks. SAN tissue was excised and transferred into a low- $\text{Ca}^{2+}$  solution containing 140 mM NaCl, 5.4 mM KCl, 0.5 mM  $\text{MgCl}_2$ , 0.2 mM  $\text{CaCl}_2$ , 1.2 mM  $\text{KH}_2\text{PO}_4$ , 50 mM taurine, 5.5 mM D-glucose, 1 mg/mL BSA, and 5 mM Hepes–NaOH (adjusted to pH 6.9 with NaOH) for 4 min. Then, enzymatic digestion was carried out for 15–20 min at 36 °C in the low- $\text{Ca}^{2+}$  solution containing purified collagenase 1 and II (0.15 mg/mL Liberase medium Thermolysin, Roche, Mannheim, Germany) and elastase (0.5 mg/mL, Worthington, Lakewood, NJ, USA). Digestion was stopped by washing the SAN in a “Kraftbrühe” (KB) medium containing 100 mM K-glutamate, 10 mM K-aspartate, 25 mM KCl, 10 mM  $\text{KH}_2\text{PO}_4$ , 2 mM  $\text{MgSO}_4$ , 20 mM taurine, 5 mM creatine, 0.5 mM EGTA, 20 mM D-glucose, 5 mM Hepes, and 1 mg/mL BSA (adjusted to PH 7.2 with KOH). Single SAN cells were then dissociated from the SAN tissue by manual agitation using a flame-forged Pasteur's pipette. To recover the automaticity of the SAN cells,  $\text{Ca}^{2+}$  was gradually reintroduced in the cell's storage solution to a final concentration of 1.8 mM [31]. SAN cells were then left to rest for 1 h before recording.

### 2.2. Patch-Clamp Recordings of SAN Cells

SAN cells were harvested in custom-made chambers with glass bottoms for cell attachment and superfused with Tyrode solution warmed at 36 °C before recording. All electrophysiological signals, APs and ion currents, were measured by perforated patch-clamp technique and recorded using a Multiclamp 700 A patch clamp amplifier connected to Digidata 1550B interface (Molecular Devices). Electrodes had a resistance of 3–4 M $\Omega$  when filled with a solution containing (in mM): 80 K-aspartate, 50 KCl, 1  $\text{MgCl}_2$ , 2  $\text{CaCl}_2$ , 5 EGTA, 5 HEPES, and 3 ATP-Na (adjusted to pH 7.2 with KOH). Perforated patch-clamp was performed by adding 30  $\mu\text{M}$   $\beta$ -escin to the intracellular solution. Seal resistances were in the range of 2–5 G $\Omega$ . Perfusion of pre-warmed (36 °C) experimental solutions was achieved by using a multi-MPRE8 heating pen (Cell Micro Controls). AP parameters were measured as previously described (see Supplementary Table S1 inset in ref. [27]). For ion current measurements, dormancy or firing of SAN cells at baseline were recorded in current-clamp for at least 30 s before switching to voltage-clamp.

#### 2.2.1. $I_{\text{CaL}}$ Measurement

To record  $I_{\text{CaL}}$ , 30  $\mu\text{M}$  tetrodotoxin (TTX) was added to Tyrode perfusion. From a holding potential of –55 mV, depolarizing steps of 80 ms were undertaken from –55 to

+60 mV. Peak density was taken and plotted against corresponding voltage (I–V curve) for each cell. Nifedipine (3  $\mu\text{M}$ ) was added to Tyrode + TTX perfusion to inhibit L-type  $\text{Ca}_v1.3$   $\text{Ca}^{2+}$  channels in isolated  $\text{Ca}_v1.2^{\text{DHP-/-}}$  SANC. Nifedipine-sensitive current was obtained by withdrawing the current recorded in nifedipine condition to the one recorded in Tyrode + TTX condition.

### 2.2.2. $I_f$ Measurement

Hyperpolarizing steps from  $-135$  to  $-35$  mV in  $+10$  mV increments were undertaken from a holding potential of  $-35$  mV. Each hyperpolarizing step lasted 1700 ms and IV curves were plotted for each cell with current density taken at steady state.

### 2.3. 2D Calcium Imaging of Single SAN Cells

Calcium dynamics in isolated SAN cells were measured with confocal microscopy (Zeiss LSM 780) as previously described [29]. Briefly, SAN cells were seeded in a glass Fluorodish (FD3510-100, WPI), coated overnight with laminin (1 mg/mL, Sigma-Aldrich, Saint-Louis, MO, USA), for 1 h before recordings. Cells were loaded for 20 min with a Tyrode solution containing the  $\text{Ca}^{2+}$  indicator CAL-520 (1 ng/ $\mu\text{L}$ ). After washing CAL-520 two times, cells were recorded in Tyrode bath solution. Images were acquired by scanning SAN cells with an argon laser in line-scan configuration. Fluorescence was excited at 488 nm and emissions were collected at  $>505$  nm. A  $63\times$  oil immersion objective was used to record  $[\text{Ca}^{2+}]_i$  in isolated SAN cells. Perfusion of pre-warmed ( $36^\circ\text{C}$ ) experimental solutions was achieved by using a multi-MPRE8 heating pen (Cell Micro Controls). SR  $\text{Ca}^{2+}$  load was measured by acute addition of 10 mM caffeine to bath solution. Background noise was suppressed and the time-course of  $\text{Ca}^{2+}$  fluorescence was analyzed with Clampfit (ver. 11.1).  $\text{Ca}^{2+}$  transients were analyzed using ImageJ software but LCRs were analyzed using a homemade software written on R (olivierbortolotti/lcr-analysis-san (github.com), accessed on 22 November 2021), inspired by IOC BIO sparks detection and analysis software [32]. Since cells have not been permeabilized, the software measured LCR parameters after suppressing the AP-induced  $\text{Ca}^{2+}$  transient to allow an accurate comparison between dormant and firing SANC.

### 2.4. Intact SAN Immunostaining

Intact SAN–atria preparations were obtained as previously described [27]. Briefly, entire SAN–atria preparation was placed in pre-warmed ( $36^\circ\text{C}$ ) Tyrode solution and pinned to the bottom of an optical chamber (Fluorodish, FD35PDL-100; WPI) coated with  $\sim 2$  mm of clear Sylgard (Sylgard 184 Silicone elastomer kit; Dow Corning, Midland, TX, USA). To maintain the SAN in a flat plane, right and left atria were also pinned using entomology needles. Superior and inferior vena cava were then cut open to expose the SAN. SAN preparation was fixed for 20 min at  $4^\circ\text{C}$  with 4% paraformaldehyde in phosphate buffer (PBS), washed twice with PBS, and permeabilized with cold ( $-20^\circ\text{C}$ ) methanol for 5 min. Sample was again washed twice and then incubated for 1 h with blocking solution (10% goat serum, 1% BSA and 0.05%  $\text{NaN}_3$  in PBS). SAN was incubated with anti- $\text{Ca}_v1.3$  (rabbit, 1:200, obtained from [33]) and anti-HCN4 (guinea pig, 1:200, Alomone labs, Cat. AGP-004) primary antibodies at  $4^\circ\text{C}$  overnight. Sample was washed and incubated for 1 h at  $37^\circ\text{C}$  with Alexa 488 goat anti-rabbit (1:200, Thermo Fischer Scientific, Waltham, MA, USA, Cat. A11034) and Alexa 594 goat anti-guinea pig (1:200, Abcam, Cat. ab150188) secondary antibodies. SAN preparation was washed twice and mounted with Prolong diamond antifade reagent (Thermo Fischer Scientific, Waltham, MA, USA, Cat. P36961). Images were captured with a Leica DM1 microscope.

### 2.5. $\text{Ca}_v1.3$ and HCN4 Labeling in Isolated SANC

SANC were isolated as described above and plated on a multi-well glass slide (Lab-Tek Chamber slide<sup>TM</sup>, Thermo Fischer Scientific), coated with 0.1 M  $\text{NaHCO}_3$ , 15 mM NaOH and  $50\ \mu\text{g}\cdot\text{mL}^{-1}$  Cell tak (Corning<sup>TM</sup> Cell Tak, Thermo Fischer Scientific) for at least

20 min. Cells were fixed for 15 min at room temperature with 4% paraformaldehyde in PBS, washed twice with PBS, and then permeabilized for 15 min with 0.1% Triton in PBS. Samples were again washed with PBS and incubated for 1 h with the blocking solution (see above). SANC were incubated at 4 °C overnight with anti-Ca<sub>v</sub>1.3 and anti-HCN4 (see above) primary antibodies and then incubated with Alexa 488 goat anti-rabbit and Alexa 594 goat anti-guinea pig (see above) for 1 h at 37 °C. Cells were finally washed twice and mounted with Prolong diamond antifade reagent (Thermo Fischer Scientific, Cat. P36961). Images were captured with an Axio Imager Z1 Apotome microscope (Carl Zeiss, Jena, Germany).

## 2.6. Dual Immunostaining of Phospholamban in Isolated SANC

To investigate the potential role of Ca<sub>v</sub>1.3 in phospholamban (PLB) phosphorylation on serine 16 or threonine 17, isolated SANC needed to be in a physiological solution. Therefore, immunostaining was completed after Ca<sup>2+</sup> reintroduction (see single cell isolation protocol above). SANC were plated on a multi-well glass slide (see above) and incubated for 5 min in Tyrode solution. Cells were separated in three groups and incubated with: condition 1: Tyrode for 6 min; condition 2: 100 nM isoproterenol (ISO) for 6 min; or condition 3: 100 nM ISO for 3 min and then ISO + 3 μM nifedipine (Nife) for 3 min. Immunostaining was then performed as described above with anti-PLB total (mouse, 1:200, Badrilla, Cat. No. A010-14) and anti-phosphorylated PLB at serine 16 (rabbit, 1:200, Badrilla, Cat. No. A010-12AP) or anti-phosphorylated PLB at threonine 17 (rabbit, 1:200, Badrilla, Cat. No. A010-13) primary antibodies and Alexa 594 goat anti-mouse (1:200, Jackson laboratories, Cat. 115-585-003) and Alexa 488 goat anti-rabbit (1:200, Thermo Fischer Scientific, Cat. A11034) secondary antibodies.

## 2.7. Statistical Analysis

Statistical analysis was performed using Prism 9.1.2 (GraphPad Software). Data are expressed as mean ± the standard error of the mean (SEM).  $p \leq 0.05$  was considered statistically significant. Statistical tests used in each experiment are specified throughout the figure legends.

# 3. Results

## 3.1. Inhibition of L-Type Ca<sup>2+</sup> Channels Reversed Adrenergic-Induced Acceleration of AP Frequency in Isolated SANC from WT Mice

We studied spontaneous AP firing in  $n = 29$  SANC isolated from six WT mouse hearts. Of the 29 cells, two-thirds exhibited a dormancy behavior at baseline (dormant SANC) and a third were spontaneously firing (firing SANC) (Figure 1A). Dormant cells had no apparent spontaneous electrical activity. Their resting potential was either depolarized around  $-30$  mV or hyperpolarized around  $-70$  mV. However, they showed spontaneous AP firing when injected with artificial current to reach membrane potentials falling within the range of the diastolic depolarization of firing SANC (Figure 1B, Supplementary Figure S1B). Firing SANC presented a variable degree of rhythmicity, evidenced by the dispersion of the coefficient of variation (standard deviation/mean, CoV) of the firing inter-beat time (Supplementary Figure S1C).

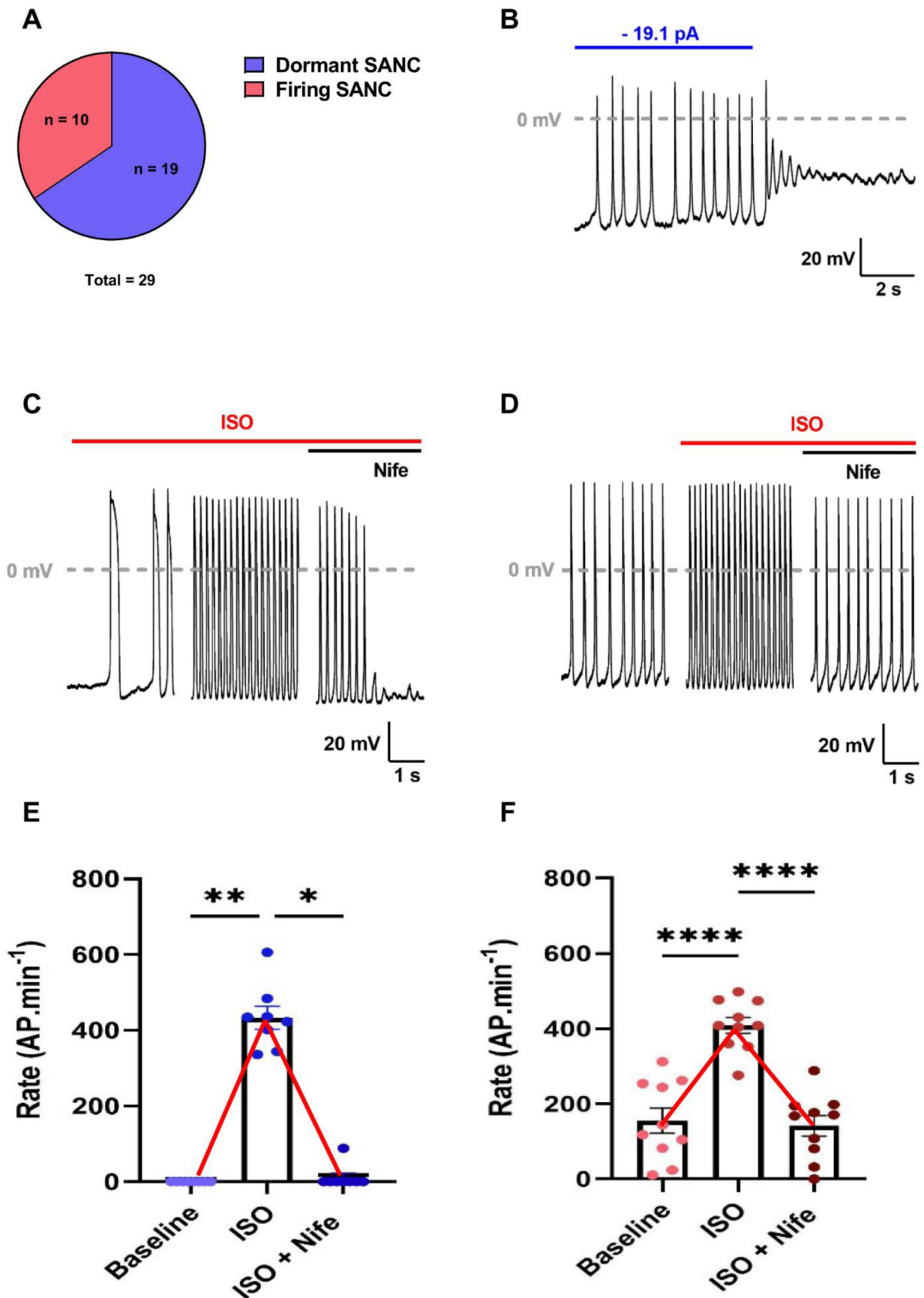


Figure 1. L-type  $\text{Ca}^{2+}$  channels inhibition completely reversed the ISO-induced acceleration of

depolarization rate in both dormant and spontaneously firing SANC isolated from WT mice. **(A)** Proportion of dormant and spontaneously firing SANC at baseline. **(B)** Current-clamp recording sample of dormant SANC initiating firing when injected with hyperpolarizing current. Average depolarization rates and illustrative examples of dormant ((C–E),  $n = 8$ ) and firing ((D–F),  $n = 10$ ) SANC at baseline and after perfusion of isoprenaline (ISO 100 nM) and subsequent perfusion of nifedipine (3  $\mu\text{M}$ ). \*  $p < 0.05$ , \*\*  $p < 0.01$ , \*\*\*\*  $p < 0.0001$  by parametric one-way ANOVA or non-parametric Friedman test.

Of the 19 dormant SANC, 8 initiated firing under  $\beta$ -adrenergic stimulation (100 nM Iso-prenaline, ISO), reaching beating frequencies of  $433 \pm 30$  bpm, while 11 remained dormant (Figure 1C,E, Supplementary Figure S1A). The resting potential of dormant SANC that did not initiate firing was significantly depolarized compared with the ones that started firing (Supplementary Figure S1D). In firing SANC, ISO significantly augmented the frequency by increasing the linear and exponential slope of the DD and decreasing AP duration without affecting any other AP parameters (Supplementary Table S1).  $\beta$ -adrenergic stimulation also brought all SANC to the same level of rhythmicity (CoV:  $0.04 \pm 0.01$  for both dormant and firing SANC). In addition, dormant SANC reached beating frequencies similar to firing SANC under ISO ( $433 \pm 30$  and  $409 \pm 21$  bpm, respectively) (Supplementary Table S1).

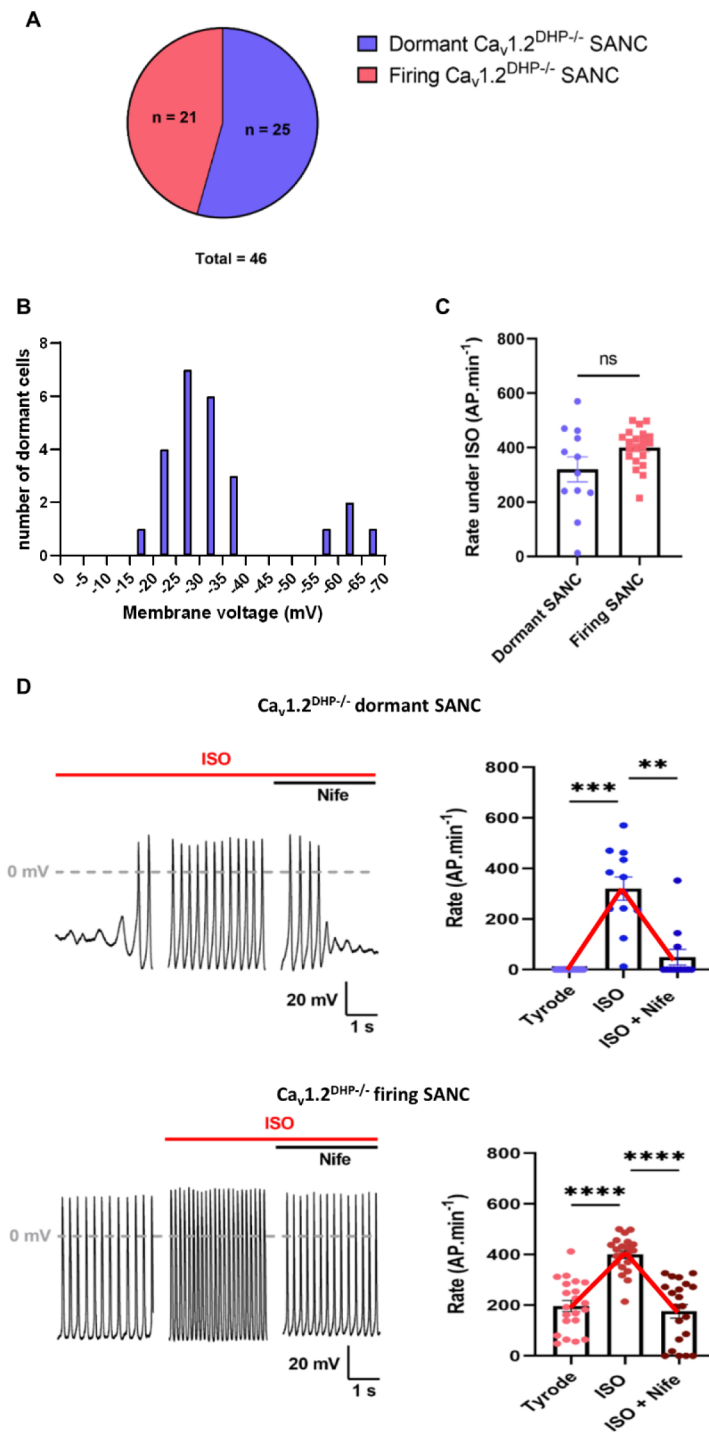
To investigate the role of L-type  $\text{Ca}^{2+}$  channels in adrenergic-induced firing in dormant SANC, we additionally superfused cells with 3  $\mu\text{M}$  nifedipine (Nife), a concentration ensuring the full blockade of L-type  $\text{Ca}^{2+}$  currents [26]. We observed that L-type  $\text{Ca}^{2+}$  channel inhibition completely stopped AP firing under  $\beta$ -adrenergic stimulation (Figure 1C,E). In contrast, Nife did not stop AP firing in firing SANC but significantly decreased the firing frequency, which returned to values similar to basal before stimulation (Tyrode:  $156 \pm 33$  bpm; ISO + Nife:  $142 \pm 27$  bpm), despite continuous  $\beta$ -adrenergic stimulation (Figure 1D,F, Supplementary Figure S1A).

In conclusion, the inhibition of L-type  $\text{Ca}^{2+}$  channels completely reversed the positive chronotropic effect of  $\beta$ -adrenergic stimulation in both dormant and firing SANC. These data indicate that L-type  $\text{Ca}^{2+}$  channels are required for the initiation of automaticity in dormant SANC and play a major role in accelerating the beating frequency in firing SANC upon  $\beta$ -adrenergic activation.

### 3.2. Selective Inhibition of L-Type $\text{Ca}_v1.3$ $\text{Ca}^{2+}$ Channels Reversed Adrenergic-Induced Acceleration of AP Frequency in Isolated SANC of $\text{Ca}_v1.2^{\text{DHP-/-}}$ Mice

Previous work has shown that  $\text{Ca}_v1.3$  channels contribute to the generation of DD [25,27,29]. We thus attempted to determine how  $\text{Ca}_v1.3$  channels were involved in the adrenergic-induced initiation of automaticity in dormant SANC. We studied spontaneous firing in SANC isolated from 16  $\text{Ca}_v1.2^{\text{DHP-/-}}$  mouse hearts. In  $\text{Ca}_v1.2^{\text{DHP-/-}}$  mice, a T1066Y knock-in point mutation in the  $\text{Ca}_v1.2$   $\alpha 1$  subunit inactivates its sensitivity to dihydropyridines, allowing the selective pharmacological inhibition of  $\text{Ca}_v1.3$  channels by Nife [30]. Of the 46 cells studied, 21 were spontaneously firing and 25 were dormant at baseline, showing roughly the same proportion as WT SANC (Figures 1A and 2A).





**Figure 2.**  $Ca_v1.3$   $Ca^{2+}$  channels are required for ISO-induced acceleration of depolarization rate in dormant and spontaneously firing SANC isolated from  $Ca_v1.2^{DHP-/-}$  mice. (A) Proportion of dormant and spontaneously firing  $Ca_v1.2^{DHP-/-}$  SANC at baseline. (B) Distribution of membrane potential of dormant  $Ca_v1.2^{DHP-/-}$  at baseline. (C) Firing rate comparison between dormant (n = 12) and firing (n = 21)  $Ca_v1.2^{DHP-/-}$  SANC under adrenergic stimulation (ISO). (D) Average firing rates and illustrative examples of dormant (n = 12) and firing (n = 21)  $Ca_v1.2^{DHP-/-}$  SANC at baseline and after perfusion ISO (100 nM) and subsequent perfusion of ISO and Nife (3  $\mu$ M). \*\*  $p < 0.01$ , \*\*\*  $p < 0.001$ , \*\*\*\*  $p < 0.0001$  by non-parametric Friedman test.

At baseline,  $Ca_v1.2^{DHP-/-}$  firing SANC showed no significant difference in AP parameters from WT firing SANC, except for the exponential slope of diastolic depolarization, which was higher, and the AP threshold, which was more negative, in  $Ca_v1.2^{DHP-/-}$  cells

(Supplementary Table S2). As observed with WT dormant SANC, the resting membrane potential of dormant  $Ca_v1.2^{DHP-/-}$  SANC laid positive to  $-35$  mV, outside of the DD range ( $-60$  to  $-40$  mV) (Figure 2B). Of the 25  $Ca_v1.2^{DHP-/-}$  dormant SANC, 12 started firing under  $\beta$ -adrenergic stimulation, among which nine completely stopped firing after subsequent perfusion of  $3 \mu\text{M}$  Nife (Figure 2D). Similar to dormant WT SANC, the resting potentials of dormant  $Ca_v1.2^{DHP-/-}$  SANC that did not fire under ISO perfusion were significantly depolarized (Supplementary Figure S2H). The resting potential of dormant SANC that stopped firing under concomitant perfusion of ISO and Nife was significantly depolarized compared with the MDP under ISO conditions alone, but did not return to the basal depolarized membrane potential (Supplementary Figure S2I). In firing  $Ca_v1.2^{DHP-/-}$  SANC, ISO perfusion significantly increased the spontaneous frequency, and the linear and exponential slope of the DD, and decreased AP duration. Subsequent perfusion of Nife reversed the effects of the adrenergic stimulation on the above parameters, except for AP duration, and converted rhythmic firing to dysrhythmic (CoV, ISO:  $0.06 \pm 0.01$ ; ISO + Nife:  $0.47 \pm 0.15$ ) (Figure 2D, Table 1).

**Table 1.** Properties of action potential and diastolic depolarization in  $Ca_v1.2^{DHP-/-}$  SANC.

	Firing $Ca_v1.2^{DHP-/-}$ SANC (n = 21)			Responder Dormant $Ca_v1.2^{DHP-/-}$ SANC (n = 12)		
	Baseline	ISO	ISO + Nife	Baseline	ISO	ISO + Nife
Frequency (AP·min <sup>-1</sup> )	197 ± 22	401 ± 15 ****	176 ± 30 \$\$\$\$	NA	320 ± 46	49 ± 31
MDP (mV)	-59.8 ± 1.5	-60.3 ± 1.4	-61.7 ± 1.6	NA	-53.4 ± 2	-59.9 ± 3.3
Linear slope (mV·ms <sup>-1</sup> )	0.042 ± 0.005	0.092 ± 0.009 ***	0.053 ± 0.004 \$\$\$	NA	0.080 ± 0.008	0.079 ± 0.005
Expo slope (mV·ms <sup>-1</sup> )	0.317 ± 0.019	0.596 ± 0.042 ****	0.340 ± 0.018 \$\$\$\$	NA	0.452 ± 0.046	0.411 ± 0.012
AP threshold (mV)	-43.7 ± 1.5	-42.2 ± 1.5 *	-41.7 ± 1.7	NA	-30.1 ± 2.5	-34.9 ± 2.8
Upstroke (mV·ms <sup>-1</sup> )	13.9 ± 2.8	13.3 ± 2.6	13.4 ± 2.8	NA	6.1 ± 2.9	5.4 ± 0.3
AP amplitude (mV)	82.3 ± 2.9	85.9 ± 3.3	89.1 ± 4	NA	68.3 ± 4	84.1 ± 7.1
AP duration (ms)	133.6 ± 4.4	108.9 ± 3.5 ****	111.4 ± 4.3	NA	117.1 ± 9.1	105.2 ± 15.1
Coefficient of variation	0.42 ± 0.12	0.06 ± 0.01 ****	0.47 ± 0.15 \$\$\$	NA	0.43 ± 0.22	1.11 ± 0.67

Data are expressed as mean ± SEM; MDP, maximum diastolic potential; NA, not applicable. \*  $p < 0.05$ , \*\*\*  $p < 0.001$ , \*\*\*\*  $p < 0.0001$  vs. firing SANC at baseline control by one-way ANOVA (parametric) or Friedman test (non-parametric). \$\$\$  $p < 0.001$ , \$\$\$\$  $p < 0.0001$  vs. firing SANC under ISO perfusion by one-way ANOVA (parametric) or Friedman test (non-parametric). Only n = 3 dormant SANC did not stop under ISO + Nife condition, hence no statistical analysis was performed.

Spontaneous firing under  $\beta$ -adrenergic stimulation in dormant and firing  $Ca_v1.2^{DHP-/-}$  SANC was different. Indeed, while frequency, AP duration and the linear slope of the DD showed no statistical difference, dormant SANC APs under ISO exhibited a depolarized MDP and AP threshold, with a slower exponential slope of DD and AP upstroke and smaller amplitude compared with firing SANC (Supplementary Figure S2A–G). Taken together, these data show that the selective inhibition of  $Ca_v1.3$  channels can completely reverse the effects of  $\beta$ -adrenergic stimulation in both dormant and firing  $Ca_v1.2^{DHP-/-}$  SANC.

In addition, we did not find significant differences in the characteristics of AP firing between WT and  $Ca_v1.2^{DHP-/-}$  SANC under all conditions tested, indicating that the observed effects in  $\beta$ -adrenergic stimulation are attributable to  $Ca_v1.3$  channels (Supplementary Table S2).

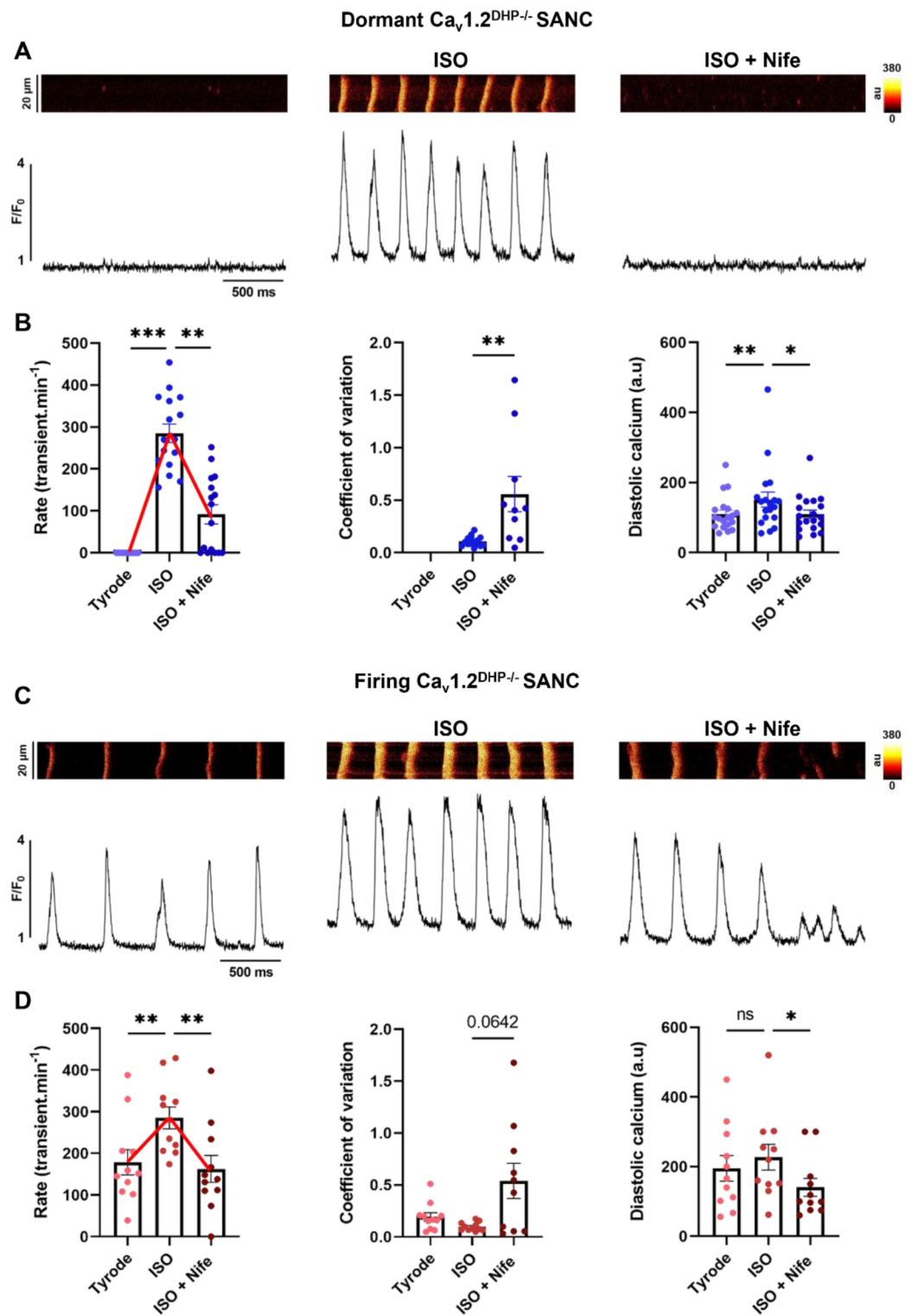
### 3.3. Selective Inhibition of L-Type $Ca_v1.3$ $Ca^{2+}$ Channels Disrupts $Ca^{2+}$ Release in Isolated $Ca_v1.2^{DHP-/-}$ SANC

Since intracellular calcium dynamics contribute to physiological pacemaking, we performed 2D line-scan calcium imaging on 30 SANC isolated from 13  $Ca_v1.2^{DHP-/-}$  hearts. Of the 30 cells, two-thirds were dormant (i.e., cells exhibiting only LCRs with no spontaneous  $Ca^{2+}$  transients) and one-third were spontaneously firing at baseline (i.e., cells with LCRs and spontaneous  $Ca^{2+}$  transients) (Figure 3A,C). A few cells were difficult to classify as dormant or firing, since they presented with a very low frequency of spontaneous activity. Hence, we classified cells showing spontaneous frequency below 5 transients/min as dormant. Of the 19 dormant SANC, only three (16%) failed to initiate spontaneous firing under  $\beta$ -adrenergic stimulation, a reduced percentage compared with current clamp experiments ( $p = 0.025$ , Chi square test) (Figures 1 and 2). Notably, the percentage of dormant SANC that arrested firing under subsequent perfusion of Nife was also lower (5 out of 16 compared with 9 out of 12,  $p = 0.02$  Chi square test) (Figures 2 and 3B). In firing SANC,  $\beta$ -adrenergic stimulation significantly increased the frequency of  $Ca^{2+}$  transients, while the concomitant perfusion of ISO and Nife induced a return to basal levels (Tyrode:  $179 \pm 31$ ; ISO + Nife:  $162 \pm 32$  bpm) (Figure 3C,D). The inhibition of  $Ca_v1.3$  also converted  $\beta$ -adrenergic rhythmic firing to dysrhythmic in both dormant and firing SANC (Figure 3B,D). Consistent with what we observed in current clamp experiments, the frequency of  $Ca^{2+}$  transients under  $\beta$ -adrenergic stimulation was similar between dormant and firing SANC (respectively  $285 \pm 22$  and  $285 \pm 26$  bpm) (Figure 3B,D).

To determine the effects of  $Ca_v1.3$  inhibition on  $Ca^{2+}$  dynamics, we analyzed the properties of  $Ca^{2+}$  transients and LCR parameters in  $Ca_v1.2^{DHP-/-}$  SANC. ISO significantly increased diastolic intracellular calcium ( $[Ca^{2+}]_i$ ) levels in dormant but not in firing SANC.  $Ca_v1.3$  inhibition significantly decreased the diastolic level of  $[Ca^{2+}]_i$  in dormant and firing SANC (Figure 3B,D). While the number of LCRs increased under  $\beta$ -adrenergic stimulation and decreased after subsequent perfusion of Nife in dormant SANC, there was no significant difference in firing SANC (Table 2).  $\beta$ -adrenergic stimulation also increased the LCR size and  $Ca_v1.3$  inhibition decreased it in both dormant and firing SANC (Table 2). In contrast, there was no difference in LCR amplitude and duration in neither dormant nor firing SANC (Table 2).

Interestingly, three dormant SANC did not initiate firing under  $\beta$ -adrenergic stimulation. In the sac line, some LCRs can fall very close to the  $Ca^{2+}$  transient and even merge with it, rendering the proper detection and counting of these LCRs difficult. However, since these dormant SANC did not exhibit spontaneous  $Ca^{2+}$  transients, direct effects of  $\beta$ -adrenergic stimulation and subsequent  $Ca_v1.3$  inhibition on single LCRs could be observed. In these cells, ISO increased the number of LCRs while subsequent  $Ca_v1.3$  inhibition decreased it.  $Ca_v1.3$  inhibition also decreased LCR size while no trend could be identified for LCR duration and amplitude (Supplementary Figure S3).

Taken together, these results indicate that the disruption of diastolic  $[Ca^{2+}]_i$ , and the generation and size of LCRs by  $Ca_v1.3$  inhibition contribute to reverse the effects of the  $\beta$ -adrenergic stimulation of spontaneous activity in SANC.



**Figure 3.** Inhibition of  $Ca_v1.3$   $Ca^{2+}$  channels decreased spontaneous  $Ca^{2+}$  transient rate under  $\beta$ -adrenergic stimulation in isolated  $Ca_v1.2^{DHP-/-}$  SANC. Line-scan and corresponding time-course of  $Ca^{2+}$  fluorescence in dormant (**A**) and spontaneously firing (**C**)  $Ca_v1.2^{DHP-/-}$  SANC in Tyrode, ISO (100 nM) and ISO + Nife (3  $\mu$ M) conditions. Average  $Ca^{2+}$  transient rate, mean coefficient of variation and mean diastolic calcium in dormant (**B**), blue,  $n = 16$ ) and firing (**D**), red,  $n = 11$ )  $Ca_v1.2^{DHP-/-}$  SANC. \*  $p < 0.05$ , \*\*  $p < 0.01$ , \*\*\*  $p < 0.001$  by parametric one-way ANOVA or non-parametric Friedman test.

**Table 2.** Properties of LCR in  $Ca_v1.2^{DHP-/-}$  SANC.

	Firing $Ca_v1.2^{DHP-/-}$ SANC (n = 8)			Responder Dormant $Ca_v1.2^{DHP-/-}$ SANC (n = 10)		
	Baseline	ISO	ISO + Nife	Baseline	ISO	ISO + Nife
LCR number (LCRs/s/20 $\mu$ m)	1.25 $\pm$ 0.31	1.08 $\pm$ 0.18	0.78 $\pm$ 0.2	0.23 $\pm$ 0.1	1.01 $\pm$ 0.24 *	0.41 $\pm$ 0.15
LCR size ( $\mu$ m)	4.71 $\pm$ 0.39	5.76 $\pm$ 0.59	4.28 $\pm$ 0.21 <sup>\$</sup>	3.61 $\pm$ 0.24	5.98 $\pm$ 0.67 *	4.42 $\pm$ 0.39
LCR duration (ms)	22.76 $\pm$ 3.14	18.83 $\pm$ 0.98	19.42 $\pm$ 3.01	18.38 $\pm$ 2.17	19.35 $\pm$ 1.66	17.74 $\pm$ 2.26
LCR amplitude (F/F <sub>0</sub> )	2.32 $\pm$ 0.1	2.28 $\pm$ 0.12	2.2 $\pm$ 0.07	2.43 $\pm$ 0.11	2.49 $\pm$ 0.12	2.46 $\pm$ 0.12

Data are expressed as mean  $\pm$  SEM; \*  $p < 0.05$  vs. baseline control by one-way ANOVA (parametric) or Friedman test (non-parametric). <sup>\$</sup>  $p < 0.05$  vs. ISO condition by one-way ANOVA (parametric) or Friedman test (non-parametric).

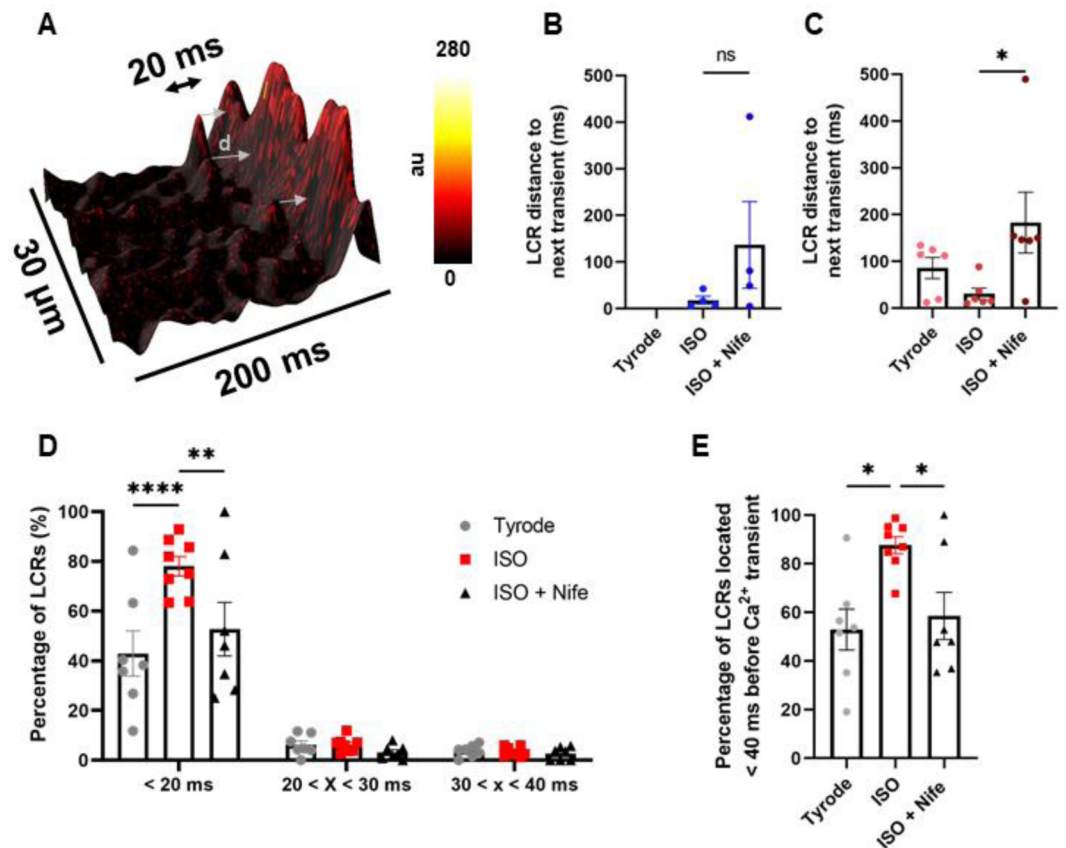
### 3.4. $\beta$ -Adrenergic Activation of SANC Automaticity Synchronizes LCRs in Late Diastole and Is Dependent of L-Type $Ca_v1.3$ $Ca^{2+}$ Channels

We previously showed that the genetic ablation of  $Ca_v1.3$  channels disrupts the generation and dynamics of diastolic LCRs in mouse SANC [27,29]. However, the consequences of the selective inhibition of  $Ca_v1.3$  on diastolic LCRs have not been studied. LCR synchronization in space and time in late DD is an important concept of the *coupled clock* model of peacemaking [4]. Therefore, the  $Ca_v1.3$ -mediated synchronization of LCRs may contribute to explain ISO-induced spontaneous firing in dormant SANC and the positive chronotropic effect of adrenergic activation in firing SANC. We thus investigated the synchronization of diastolic LCRs in our line-scan experiments on isolated mouse SANC before and after the inhibition of  $Ca_v1.3$  channels. To this aim, we measured the distance in time between every single LCR event and the following  $Ca^{2+}$  transient (Figure 4A). Averaged data for each investigated cell are shown in Figure 4B,C. In dormant  $Ca_v1.2^{DHP-/-}$  SANC that initiated firing under  $\beta$ -adrenergic activation and did not stop after Nife perfusion, the average LCR–transient distance tends to increase when  $Ca_v1.3$  channels are inhibited compared with ISO alone (ISO: 18.3  $\pm$  8.4; ISO + Nife: 136.8  $\pm$  93 ms) (Figure 4B). In firing  $Ca_v1.2^{DHP-/-}$  SANC,  $\beta$ -adrenergic activation significantly decreased this distance while subsequent  $Ca_v1.3$  inhibition significantly increased it (Tyrode: 86.2  $\pm$  22.5; ISO: 30.9  $\pm$  12.1; ISO + Nife: 183.2  $\pm$  65.1 ms) (Figure 4C).

To confirm these results, we measured the percentage of LCRs located in the last fraction of DD (i.e., <20, 30, and 40 ms before  $Ca^{2+}$  transient) in firing  $Ca_v1.2^{DHP-/-}$  SANC. Under basal conditions, 40% of LCRs were found in a time window shorter than 20 ms before spontaneous  $Ca^{2+}$  transient. This fraction increased to 80% under  $\beta$ -adrenergic stimulation and decreased to 50% with subsequent  $Ca_v1.3$  inhibition (Figure 4D). Interestingly, while 90% of LCRs fell within 40 ms before  $Ca^{2+}$  transient under  $\beta$ -adrenergic stimulation, this proportion was  $\approx$ 50% under basal conditions and the concomitant perfusion of ISO and Nife, indicating that half of LCR events under these conditions were temporally unrelated to the generation of  $Ca^{2+}$  transients (Figure 4E).

To minimize the bleaching of the  $Ca^{2+}$  indicator, the acquisition of line scan images of SANC was performed at steady state under control conditions, ISO and concomitant perfusion of ISO and Nife. However, we observed an early effect of Nife perfusion in  $n = 2$   $Ca_v1.2^{DHP-/-}$  SANC just before they stopped spontaneous activity. We determined LCRs synchronization in the short window between the moment when  $Ca^{2+}$  transient frequency started decreasing and the moment when they totally disappeared. For the two cells,  $Ca_v1.3$  inhibition increased the average distance of LCRs to the following  $Ca^{2+}$  transient and decreased the proportion of events at a time <20 ms before the  $Ca^{2+}$  transient (Supplementary Figure S4). Therefore, LCRs became desynchronized right before the cells stopped spontaneous activity.

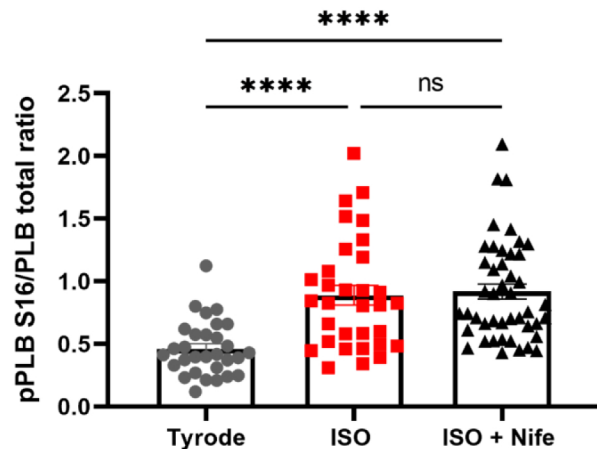
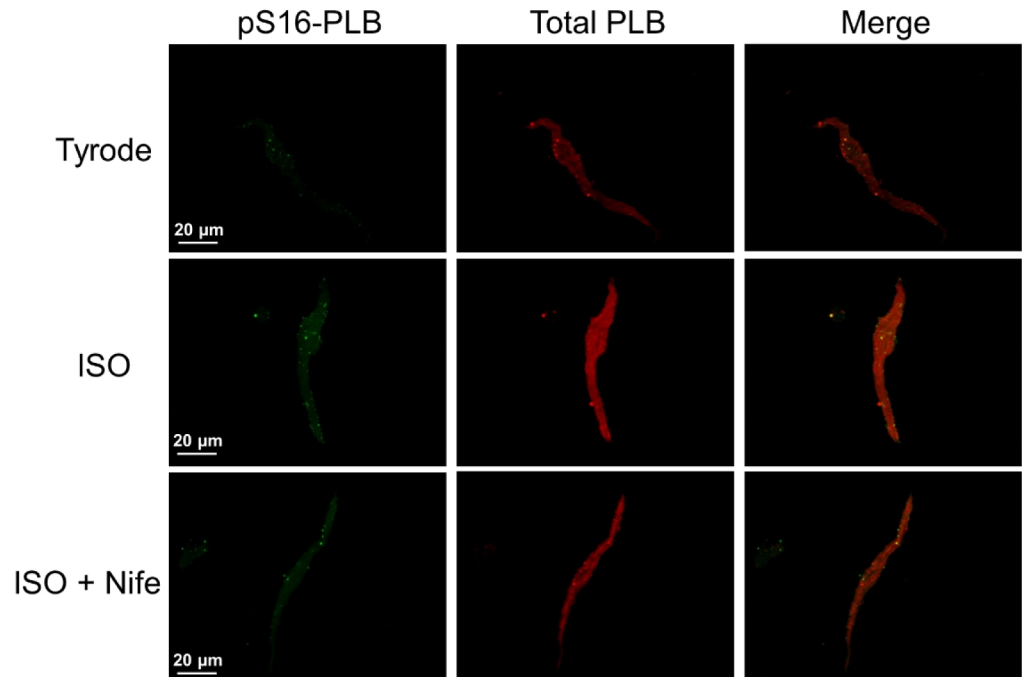
Taken together, these results indicate that  $\text{Ca}_v1.3 \text{ Ca}^{2+}$  channels regulate the synchronization of LCRs in late DD under  $\beta$ -adrenergic stimulation.



**Figure 4.** L-type  $\text{Ca}_v1.3 \text{ Ca}^{2+}$  channels control LCR synchronization upon  $\beta$ -adrenergic stimulation in late diastole. (A) Three-dimensional reconstruction of diastolic  $[\text{Ca}^{2+}]_i$  increase with represented distance (d) between LCR and following  $\text{Ca}^{2+}$  transient. Average distance d (in ms) in dormant (B),  $n = 4$  and firing (C),  $n = 6$  SANC. (D) Proportion of LCRs located  $< 20$  ms, between 20 and 30 ms, and between 30 and 40 ms before  $\text{Ca}^{2+}$  transient in firing ( $n = 7$ ) SANC in Tyrode, ISO 100 nM and ISO + Nife 3  $\mu\text{M}$  conditions. (E) Proportion of LCRs located  $< 40$  ms before  $\text{Ca}^{2+}$  transient. ns: non-significant,  $* p < 0.05$  by one-way ANOVA,  $** p < 0.01$ ,  $**** p < 0.0001$  by two-way ANOVA.

### 3.5. L-Type $\text{Ca}_v1.3 \text{ Ca}^{2+}$ Channels Are Not Necessary for PKA-Dependent Phosphorylation of PLB under $\beta$ -Adrenergic Stimulation

Previous work has shown that the activity of sarcoplasmic reticulum  $\text{Ca}^{2+}$  ATPase (SERCA) is involved in the determination of LCR phase and the responsiveness of pacemaker activity to adrenergic activation [15]. SERCA function is regulated by phospholamban (PLB), a protein that can be phosphorylated in serine 16 (pS16-PLB) by cAMP-dependent protein kinase A (PKA) and in threonine 17 (pThr17-PLB) by  $\text{Ca}^{2+}$ -calmodulin kinase II (CaMKII). It has been proposed that the phosphorylation of PLB is an important factor in the ISO-induced acceleration of pacemaking (see Lakatta et al. for review) [4]. Since selective  $\text{Ca}_v1.3$  inhibition by Nife arrests the pacemaking of dormant SANC initiated by  $\beta$ -adrenergic activation and reverses its positive chronotropic effect in firing SANC, we investigated if Nife would also affect the phosphorylation state of PLB when concomitantly perfused with ISO (Figure 5).



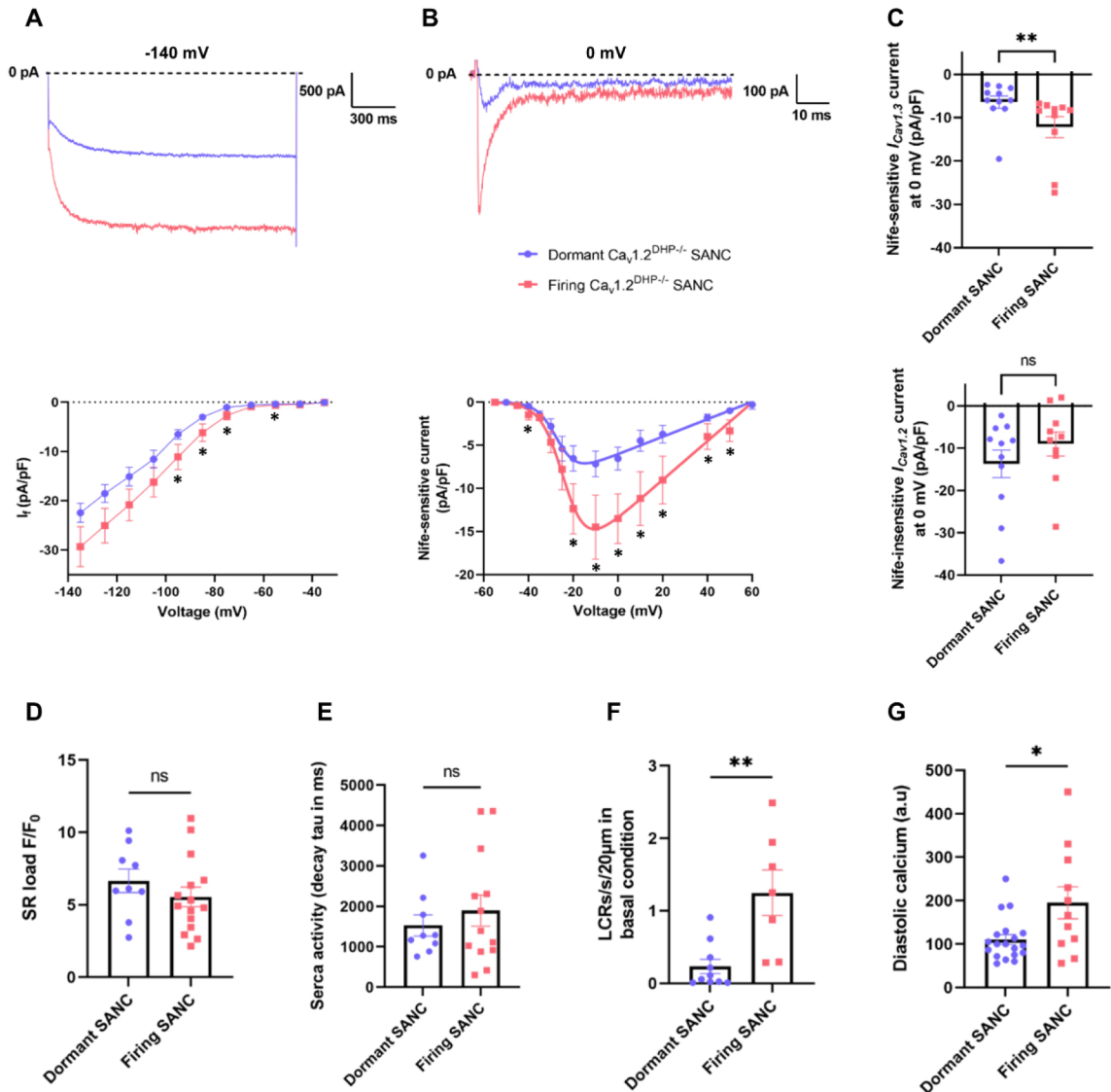
**Figure 5.** LCR regulation by  $Ca_v1.3$   $Ca^{2+}$  channels is not due to a decrease in phosphorylated PLB levels. Double immunostaining of phosphorylated PLB (pPLB) at serine 16 (green), total PLB (red) and merged images in SANC incubated with Tyrode ( $n = 30$ ), ISO 100 nM ( $n = 32$ ) or ISO + Nife 3  $\mu$ M ( $n = 45$ ) with mean pPLB/PLB ratio (bottom). ns: non-significant, \*\*\*\*  $p < 0.0001$  by one-way ANOVA test.

We quantified the pS16-PLB/total PLB and pThr17-PLB/total PLB ratio in isolated SANC from 3  $Ca_v1.2^{DHP-/-}$  mice by immunostaining each in basal conditions or after incubation with 100 nM ISO alone or concomitant incubation with ISO and 3  $\mu$ M Nife (ISO + Nife). In response to  $\beta$ -adrenergic stimulation, the pS16-PLB/total PLB ratio increased twofold. Subsequent incubation with Nife did not affect the phosphorylation level of PLB, which remained two times higher than in basal conditions (Figure 5). pThr17-PLB/total PLB ratio was increased by 45% under the ISO condition. pThr17-PLB/total PLB ratio slightly decreased upon concomitant incubation with ISO and Nife. However, we did not observe a reversal to the basal ratio level and the pThr17-PLB/total PLB ratio remained 20% higher than in the control (Supplementary Figure S5). Therefore, while the effects of  $Ca_v1.3$  inhibition under  $\beta$ -adrenergic stimulation on LCRs may also involve a reduction

in CaMKII-dependent PLB phosphorylation, PKA-dependent phosphorylation was not affected by  $\text{Ca}^{2+}$  channel blockade.

### 3.6. Diminished Diastolic Ionic Currents in Dormant SANC

To obtain insights about dormancy or active automaticity at baseline we measured the density of  $I_f$  and the net Nife-sensitive  $I_{CaL}$  current mediated by  $\text{Ca}_v1.3$  channels ( $I_{Cav1.3}$  in isolated  $\text{Ca}_v1.2^{\text{DHP-/-}}$  SANC) (Figure 6A,B, Supplementary Figure S6). Current-to-voltage (I-V) relationships showed reduced basal  $I_f$  and  $I_{Cav1.3}$  in dormant vs. firing  $\text{Ca}_v1.2^{\text{DHP-/-}}$  SANC. Interestingly, while  $I_{Cav1.3}$  density was reduced in dormant  $\text{Ca}_v1.2^{\text{DHP-/-}}$  SANC, the net Nife-insensitive  $I_{CaL}$  current mediated by  $\text{Ca}_v1.2$  ( $I_{Cav1.2}$ ) was similar in dormant and firing  $\text{Ca}_v1.2^{\text{DHP-/-}}$  SANC (Figure 6C).



**Figure 6.** Dormant SANC express reduced  $I_{Cav1.3}$  and  $I_f$ . Representative traces and I-V curves of  $I_f$  ((A),  $n = 10$  dormant and  $n = 8$  firing) and Nife-sensitive current ( $I_{Cav1.3}$ ) ((B),  $n = 12$  dormant and  $n = 9$  firing) in dormant (blue) and firing (red) SANC. (C) Nife-sensitive current ( $I_{Cav1.3}$ ) and Nife-insensitive current ( $I_{Cav1.2}$ ) densities at 0 mV in dormant and firing  $\text{Ca}_v1.2^{\text{DHP-/-}}$  SANC. Averaged SR  $\text{Ca}^{2+}$  load (D), time constant of caffeine-induced  $\text{Ca}^{2+}$  transient (E), number of LCRs (F) and diastolic  $\text{Ca}^{2+}$  (G), in dormant (blue,  $n = 9$ ) and firing (red,  $n = 15$ ) SANC. ns: non-significant, \*  $p < 0.05$ , \*\*  $p < 0.01$  by unpaired  $t$ -test.

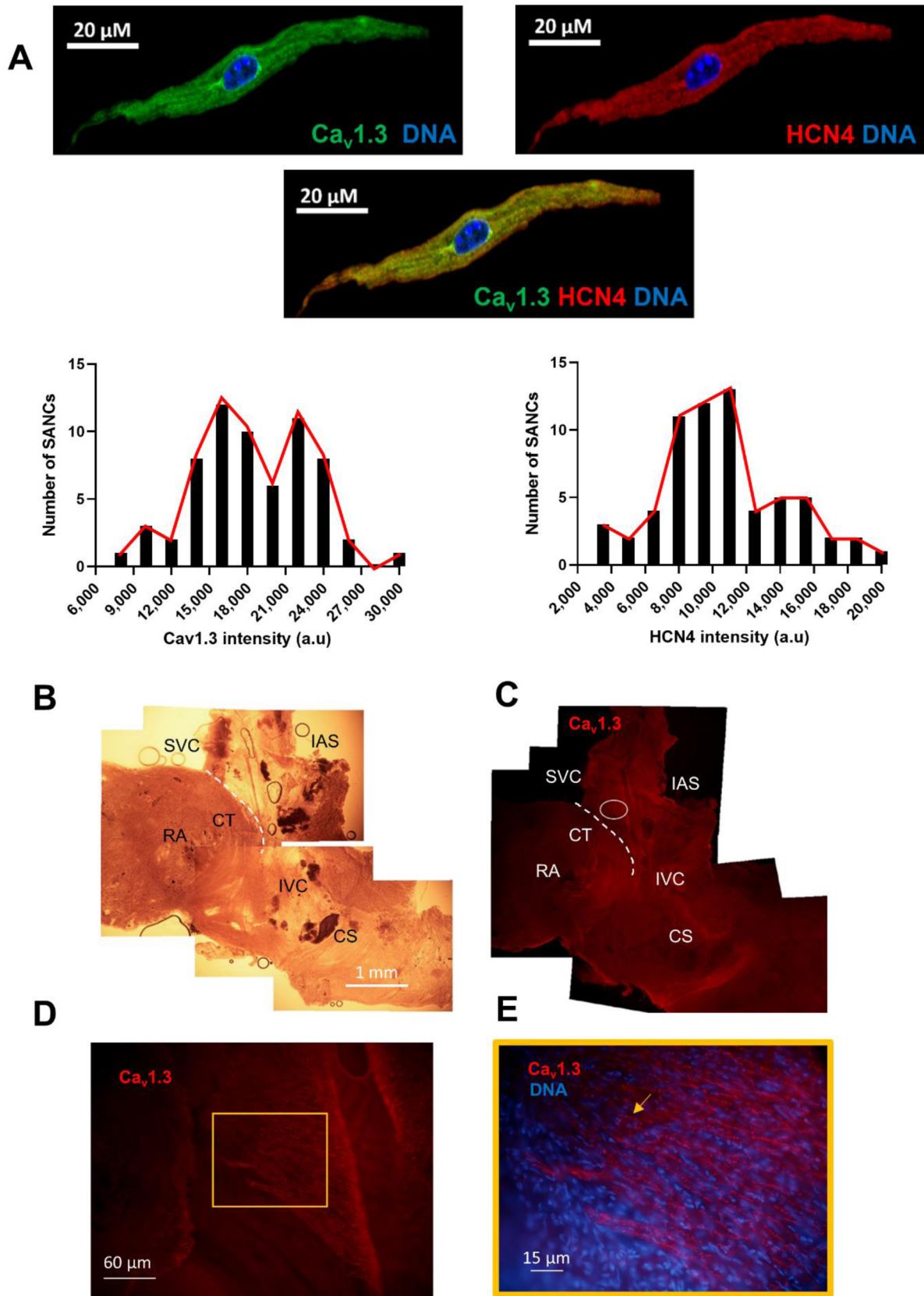


To assess the functional profile of SR  $\text{Ca}^{2+}$  release and uptake, we investigated SERCA activity by rapid caffeine application (10 mM). There was no significant difference in SR  $\text{Ca}^{2+}$  load or in the decay time constant ( $\tau$ ) of the caffeine-induced  $\text{Ca}^{2+}$  transient between dormant and firing SANC (Figure 6D,E). In contrast, data obtained from previous 2D line-scan experiments (Table 2) showed that the number of LCRs in dormant SANC is decreased by sixfold compared with firing SANC (dormant:  $0.23 \pm 0.1$ ; firing:  $1.25 \pm 0.31$  LCRs/s/20  $\mu\text{m}$ ) and that dormant SANC have significantly lower diastolic intracellular  $\text{Ca}^{2+}$  (Figure 6F,G). In conclusion, these data suggest that reduced densities of  $I_f$  and  $I_{\text{Cav}1.3}$ , translating into reduced available inward current during diastolic depolarization and reduced diastolic LCR events at baseline, could contribute to dormancy in SANC.

### 3.7. Expression of $\text{Ca}_v1.3$ and HCN4 in Intact SAN and Isolated SANC

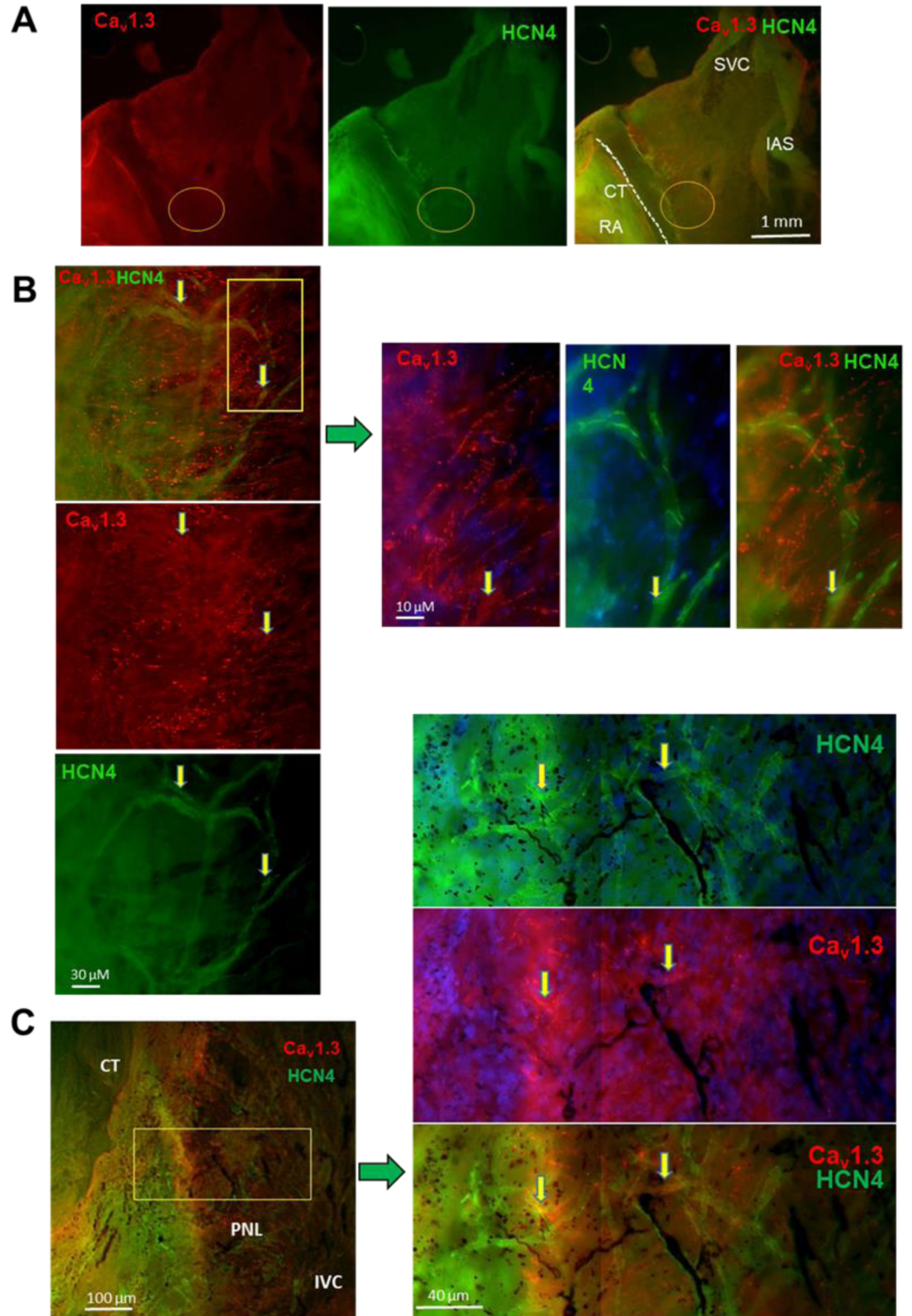
Since voltage-clamp recordings of  $I_f$  and  $I_{\text{Cav}1.3}$  showed differential current densities in dormant vs. firing SANC, we wondered if the distribution of  $\text{Ca}_v1.3$  varied in isolated SANC and in the SAN.

Co-immunostaining of isolated SANC with anti-HCN4 and anti- $\text{Ca}_v1.3$  antibodies showed the bimodal distribution of anti- $\text{Ca}_v1.3$  staining intensity, suggesting the existence of two populations of SANC with a low or high expression of  $\text{Ca}_v1.3$  channels. In contrast, the expression of HCN4 was found centered over a predominant population of isolated SANC (Figure 7A). To compare the expression of  $\text{Ca}_v1.3$  and HCN4 in the intact SAN, we performed immunostaining of SAN tissue with the right atrium. We first mapped the spatial distribution of  $\text{Ca}_v1.3$  immunoreactivity within the SAN (Figure 7B–E, supplementary Figure 7A).  $\text{Ca}_v1.3$  immunoreactivity was widely distributed within the SAN (Figure 7C). Both the cranial (close to the SVC) and the caudal (close to the IVC) SAN regions showed arrays of  $\text{Ca}_v1.3$ -expressing cells (Figure 7C,D, Supplementary Figure S7B).  $\text{Ca}_v1.3$  immunoreactivity was present at the cell membrane in aligned “hot spots” of expression (Figure 7D,E). Strong  $\text{Ca}_v1.3$  expression was also observed in the cranial SAN (white circle in Figure 7C), in a sub-region that we have previously shown to be important for the initiation of SAN automaticity [27]. The distribution pattern of  $\text{Ca}_v1.3$  expression in the SAN differed from that of HCN4. Indeed, HCN4 channels were robustly expressed along the *crista terminalis*, a pattern which encompasses the cranial and caudal SAN (Supplementary Figure S7C,D). In addition, arrays of HCN4-positive cells extended from the inter-caval axis toward the direction of the interatrial septum (Supplementary Figure S7C,D), in regions strongly expressing  $\text{Ca}_v1.3$ . Comparatively, the arrays of cells in the central region between the *crista terminalis* and the interatrial septum showed a high expression of  $\text{Ca}_v1.3$  channels (Figure 7C). We thus attempted to study co-expression of  $\text{Ca}_v1.3$  and HCN4 channels in the intact SAN. Co-staining of  $\text{Ca}_v1.3$  and HCN4 channels in the intact SAN-RA was technically challenging and provided images with attenuated fluorescence in comparison to individual staining of the two proteins, possibly because of steric interference between the two antibodies targeting sites in the proximity of each other. Nevertheless, co-staining of the SAN with anti- $\text{Ca}_v1.3$  and anti-HCN4 antibodies (Figure 8) showed territories co-expressing  $\text{Ca}_v1.3$  and HCN4 in the SAN center in accordance with the expected pacemaker leading site (Figure 8A). This region presented arrays of intermingled cells expressing strong  $\text{Ca}_v1.3$  or HCN4 immunoreactivity (Figure 8B). Cells co-expressing  $\text{Ca}_v1.3$  and HCN4 could be identified in the caudal SAN in accordance with the posterior nodal extension (arrow in Figure 8C).



**Figure 7.** Expression of  $Ca_v1.3$  and HCN4 in mouse SAN. (A) Immunolabeling of  $Ca_v1.3$  (green) and HCN4 (red) in  $n = 64$  isolated SANC with distribution of SANC based on  $Ca_v1.3$  or HCN4 fluorescence intensity. Low fluorescence intensity is related to a lower expression of the channels while high density is related to a higher expression. (B) Bright-field image of a SAN-RA ( $N = 3$ ) preparation

used for immunolabeling of  $Ca_v1.3$ . (C) Immunolabeling of  $Ca_v1.3$  (red) of the preparation in (B). (D) Immunolabeling of  $Ca_v1.3$  in the enlarged region corresponding to the white circle in (C). (E) Close-up view of  $Ca_v1.3$ -expressing cells (red), together with nuclear labeling of DNA (blue), in the field corresponding to the central square in panel (D). The yellow arrow indicates  $Ca_v1.3$  immunoreactive cells with punctate staining. Abbreviations: RA, right atrium; SVC, superior *vena cava*; IVC, inferior *vena cava*; IAS, inter-atrial septum; CS, coronary sinus (cut-open view); CT, *crista terminalis*. The white dashed line roughly indicates the CT boundary.



**Figure 8.** Co-labeling of  $Ca_v1.3$  and HCN4 in mouse SAN. (A) Immunolabeling of  $Ca_v1.3$  (red) and

HCN4 (green) in the isolated cranial SAN-RA preparation. (B) Left panels: close-up views of the area circled in (A); right panels: enlargement with cells expressing  $Ca_v1.3$  or HCN4, from boxed region in left panel. (C) Immunolabeling of regions co-expressing  $Ca_v1.3$  and HCN4. The left panel shows the region in accordance with the posterior nodal extension (PNL). The yellow rectangle identifies the region considered for close-up views shown in the left panels. Left panels, from top to bottom, indicate corresponding  $Ca_v1.3$  and HCN4 immunostaining. Yellow arrows indicate SANC co-expressing  $Ca_v1.3$  and HCN4.

In summary, the mouse SAN robustly expressed  $Ca_v1.3$  in areas where the pacemaker leading site was shown to form. In addition, the pattern of expression of  $Ca_v1.3$  and HCN4 appeared to be different throughout the SAN. These data suggest that while dormant SANC may come from SAN regions expressing low densities of  $Ca_v1.3$  and HCN4, firing SANC may be situated in regions co-expressing high densities of both  $Ca_v1.3$  and HCN4.

#### 4. Discussion

Our study shows, for the first time, that L-type  $Ca_v1.3$  channels are critical to maintain the pacemaker activity induced by  $\beta$ -adrenergic activation in dormant SANC. In addition, we show that  $Ca_v1.3$  channels play a major role in generating a  $\beta$ -adrenergic positive chronotropic effect on pacemaker activity in firing SANC. Finally, we show that the selective pharmacologic inhibition of  $Ca_v1.3$  channels disrupts the activation of SANC pacemaker activity by hampering the  $\beta$ -adrenergic regulation of LCRs in terms of spatial and time synchronization.

##### 4.1. $Ca_v1.3$ Channels Are Critical $\beta$ -Adrenergic Effectors in Maintaining Firing in Dormant SANC

Even though non-pathological SAN exhibits regular firing in vivo, most of the isolated SANC from mice hearts do not show spontaneous activity in vitro (Figures 1 and 2). In this study, we find a similar percentage of isolated firing and non-firing SANC in WT and  $Ca_v1.2^{DHP-/-}$  mice (Figures 1 and 2). We also find an increased basal slope of the exponential DD phase in firing  $Ca_v1.2^{DHP-/-}$  SANC, which did not translate into an increased basal firing rate (Supplementary Table S2). The point mutation rendering  $Ca_v1.2$  channels insensitive to DHPs is in the drug-binding site. Accordingly, no significant differences in gating properties between wild-type and DHP-insensitive  $Ca_v1.2$  channels have been observed upon heterologous expression in HEK cells [30]. However, we cannot completely exclude that the knock-in of the mutation induces a slight gain-of-function in  $Ca_v1.2$  channels in the context of the native environment of firing SANC. This would be most likely due to the cellular context, because this difference was not found in dormant SANC that express  $Ca_v1.2^{DHP-/-}$  channels upon switching to firing mode. Since we recorded similar percentages of dormant SANC in the two genotypes, we conclude that  $Ca_v1.2^{DHP-/-}$  SANC faithfully recapitulate the pacemaker mechanism of WT cells at baseline.

Previous studies showed that the pharmacological inhibition of  $I_{Kr}$  [34,35],  $I_{CaL}$  [36], PKA [37], CaMKII [38], high concentrations of acetylcholine [39,40] or the combined genetic ablation of  $Ca_v1.3$  channels with the pharmacologic inhibition of  $I_f$  and  $I_{Na}$  [27] could induce dormancy in isolated SANC that were spontaneously firing APs and intracellular  $Ca^{2+}$  transients. The mechanism of induction of dormancy may differ, however, because the resting potential of SANC can be set to either positive or negative voltages. For example, while blockade of  $I_{Kr}$  sets the resting potential to positive voltages, the activation of  $I_{KACH}$  arrests the firing of SANC membrane voltages close to the MDP of firing cells [39].

Since dormancy can be induced by a variety of pharmacologic means, it is not surprising to find SANC that are dormant at baseline but can show spontaneous firing when properly stimulated. Kim et al. were indeed the first to report spontaneous firing induced by  $\beta$ -adrenergic activation in isolated dormant SANC from guinea pig hearts [20]. Historically thought of as cells damaged by enzymatic isolation, Kim and co-workers demonstrated that dormant SANC are functional under the stimulation of the cAMP signaling pathway. Here, we show that the automaticity of isolated mouse dormant SANC can be initiated under the

activation of  $\beta$ -adrenergic receptors (Figures 1–3), showing that the adrenergic stimulation of dormant SANC is shared amongst mammals. We cannot rule out the possibility that some dormant SANC might actually be damaged by enzymatic isolation, especially those that did not respond to  $\beta$ -adrenergic stimulation. However, it has recently been shown that the current densities of  $I_f$  and  $I_{CaL}$ , and the repolarizing  $K^+$  current  $I_K$ , are increased under  $\beta$ -adrenergic stimulation in non-responding dormant SANC to the same extent as in responding dormant SANC, showing that cAMP signaling is still functional in this class of SANC [21]. Besides in vitro conditions, the presence of dormant SANC has been observed ex vivo in intact mouse SAN, suggesting that dormant SANC may also be present in vivo [18,19], though their functional physiological role has not yet been fully elucidated.

The transition from dormancy to spontaneous firing is achieved via the enhancement of cAMP-PKA signaling, which causes membrane hyperpolarization to reach the range of voltages spanning diastolic depolarization ( $-60/-40$  mV, Supplementary Figure S2I). Interestingly, the membrane potential of dormant SANC that did not respond to  $\beta$ -adrenergic stimulation was significantly more depolarized than in responding dormant SANC (Supplementary Figure S2H). This suggests that, if a dormant SANC presents with very depolarized resting potential, cAMP-PKA signaling-induced hyperpolarization may not be sufficient to trigger spontaneous firing.

Previous studies demonstrated that  $I_{Cav1.3}$  activates at potentials spanning the diastolic depolarization range ( $-60$  to  $-40$  mV) in mouse SAN cells, while  $I_{Cav1.2}$  activates at voltages from positive to  $-30$  mV [6,25]. Particularly, under ISO, the apparent threshold of  $I_{Cav1.3}$  falls close to  $-55$  mV after stepping from a holding potential of  $-60$  mV [25,26,41]. Second, when mouse SAN action potentials are applied as a voltage-clamp waveform to SAN cells, the genetic ablation of  $Ca_v1.3$  channels abolished a net  $I_{Cav1.3}$ -mediated current component spanning the whole range of voltages corresponding to diastolic depolarization [29]. This last observation suggests that measuring  $I_{Cav1.3}$  under standard voltage clamp conditions may lead to an underestimation of the contribution of this current to DD. Taken together, these previous works strongly suggest that while  $I_{Cav1.3}$  importantly contributes to the generation of DD,  $I_{Cav1.2}$  is activated during the AP upstroke. This difference in voltage ranges for activation may explain why in both WT and  $Ca_v1.2^{DHP-/-}$  SANC, nifedipine reverses ISO-mediated AP acceleration in firing SANC, because the contribution to DD of  $I_{Cav1.3}$  would be predominant over that of  $I_{Cav1.2}$  under these conditions.

In line with this previous evidence, we showed that  $Ca_v1.3$  channels are critical in maintaining  $\beta$ -adrenergic-induced firing in dormant SANC, because the inhibition of  $Ca_v1.3$  channels arrested spontaneous activity (Figure 2). However, we observed that ISO induced membrane hyperpolarization in dormant SANC showing depolarized membrane potential at rest. In addition, we observed the membrane potential changing to slightly depolarized voltages under  $Ca_v1.3$  channel inhibition compared with the MDP under  $\beta$ -adrenergic stimulation, yet it did not return to the level of depolarization recorded under the basal condition (Supplementary Figure S2I). These observations are intriguing, because both  $Ca_v1.3$  and f-(HCN) channels underlie inward currents. Indeed, one would expect ISO to induce membrane depolarization rather than hyperpolarization, by augmenting the activity of  $Ca_v1.3$  channels and shifting the  $I_f$  activation to more positive voltages. While we did not directly investigate the mechanisms underlying the hyperpolarization of dormant SANC upon ISO perfusion, we can speculate that  $Ca^{2+}$ -activated  $K^+$  channels [42] may contribute to this process. At a resting potential of  $-40$  mV, the predicted steady-state availability of  $I_{Cav1.3}$  is 20%, which falls at about 10% at  $-30$  mV [6]. A limited but detectable window current is thus expected at resting potentials recorded in depolarized dormant SANC that respond to ISO. In this regard, a PKA-induced increase in  $I_{Cav1.3}$  would lead to enhanced basal  $Ca^{2+}$  entry, which in turn could activate  $Ca^{2+}$ -activated  $K^+$  channels. Besides  $I_{Cav1.3}$ ,  $Ca_v1.2$ -mediated  $I_{CaL}$  may also increase  $Ca^{2+}$  entry under ISO to activate  $Ca^{2+}$ -activated  $K^+$  channels. However, we cannot exclude that other ion channels contribute to ISO-induced membrane hyperpolarization, such as  $Ca^{2+}$ -activated  $Cl^-$  channels. Besides  $Ca_v1.3$  channels, the cAMP-dependent regulation of f-(HCN) channels could also be involved

in switching from dormancy to firing mode, as well as in maintaining automaticity in firing SANCS upon blockade of  $\text{Ca}_v1.3$  channels (Figure 2D). In this regard, we previously reported dormancy in SANC expressing a dominant negative HCN4 subunit which cannot bind cAMP [43]. These dormant cells could be switched to firing mode by perfusion of ISO. Consistent with our results, Fenske et al. [19] recently showed that dormancy could be induced in mouse WT SANC by acute blocking of cAMP binding to HCN4 channels by TAT-TRIP8b<sub>nano</sub>, a peptide that binds to the cyclic nucleotide-binding domain of HCN channels [44].

#### 4.2. $\text{Ca}_v1.3$ Channels Enhance Clock Coupling in Response to $\beta$ -Adrenergic Stimulation

$\beta$ -adrenergic stimulation accelerates heart rate by triggering the cAMP-PKA signaling-dependent phosphorylation of actors of both M-clock ( $\text{Ca}_v1.3$ ,  $\text{Ca}_v1.2$ ) and  $\text{Ca}^{2+}$  clock (RyR2, PLB), and the direct regulation of HCN4 channels by cAMP [2,4]. We showed that dormant SANC have reduced  $I_f$  and  $I_{\text{Cav}1.3}$  densities as well as a reduced number of LCRs [20] and diastolic  $[\text{Ca}^{2+}]_i$  compared with firing SANC (Figure 6). It is unlikely that a difference in  $I_f$  and  $I_{\text{Cav}1.3}$  densities could be solely due to reduced basal cAMP concentration in dormant SANC. Indeed, we find that  $I_f$  densities in dormant and firing SANC at hyperpolarized voltages where the current activation variable is close to 1 still tend to be different (Figure 6). This indicates reduced steady-state  $I_f$ -mediated membrane conductance that cannot be explained only by differential cAMP levels in the two classes of cells. In the case of  $I_{\text{Cav}1.3}$ , the difference in current density between dormant and firing SANC is comparable to the effect of saturating noradrenaline in mouse SANC [25]. Thus, one would have to postulate almost saturating basal levels of cAMP in firing SANC, which is unlikely because ISO strongly increased the firing rate in these cells in a nifedipine-dependent way (Figure 2). In addition, the density of  $I_{\text{Cav}1.2}$  is similar in dormant and firing SANC (Figure 6). Finally, we find the differential distribution of both HCN4 and  $\text{Ca}_v1.3$  in isolated SANC and in whole-mount SAN-atria preparations (Figures 7 and 8). In conclusion, previous data from Tsutsui et al. [21] and from our study suggest that the differential expression of both  $I_f$  and  $I_{\text{Cav}1.3}$  contributes to reduce basal diastolic current in dormant SANC. Interestingly,  $\text{Ca}_v1.2$ -mediated  $I_{\text{CaL}}$  densities did not differ between dormant and firing SANC, indicating that not all currents are reduced in dormant SANC. The expression of  $\text{Ca}_v1.2$ -mediated  $I_{\text{CaL}}$  in dormant  $\text{Ca}_v1.2^{\text{DHP-/-}}$  SANC indicates that Nife-induced dormancy is not caused by the total blockade of  $I_{\text{CaL}}$ . Therefore, our data show that decreased availability in key diastolic currents ( $I_f$  and  $I_{\text{Cav}1.3}$ ) associated with reduced LCRs was preventing the initiation of spontaneous activity in dormant SANC in the absence of adrenergic activation (Figure 6). This is particularly important since reduced  $I_{\text{Cav}1.3}$  will also impair spatial and temporal LCRs generation, leading to dormancy as also predicted by the *coupled clock* model of pacemaking [14]. Interestingly, there was no significant difference in SR  $\text{Ca}^{2+}$  load and the time constant of the caffeine-induced  $\text{Ca}^{2+}$  transient between dormant and firing SANC, suggesting the normal activity of SERCA. We did not look at pPLB/PLB total ratio between the two cell types, but Tsutsui et al. [21] reported a diminished ratio in dormant SANC in guinea pig. We hypothesize that the same occurs in dormant mouse SANC and that SERCA activity is indeed reduced due to increased PLB inhibition. This difference in phosphorylation levels between dormant and firing SANC could be explained by a decrease in basal cAMP in dormant SANC. In SANC, basal cAMP is tightly regulated by AC and phosphodiesterases (PDE) [45]; hence, it is possible that dormant SANC have higher basal PDE activity.

$\beta$ -adrenergic stimulation enables the initiation of firing in dormant SANC by increasing basal cAMP and therefore the PKA-dependent phosphorylation of ion channels and of proteins controlling intracellular  $\text{Ca}^{2+}$  dynamics. The phosphorylation of these proteins is required to maintain firing in dormant SANC because even though dormant SANC can spontaneously fire when an artificial current is injected to reach the DD voltage range, this firing cannot be sustained and immediately stops the second the current is removed (Figure 2). This shows that bringing membrane potential to the firing range (DD voltage

range) is not sufficient to sustain automaticity and that PKA-dependent phosphorylation is indispensable. Among the actors phosphorylated by cAMP-PKA signaling,  $Ca_v1.3$  channels seem to play a central role as regulators of  $\beta$ -adrenergic-induced spontaneous activity. Indeed, in dormant SANC, firing cannot be sustained upon  $Ca_v1.3$  inhibition. In line with this, in SANC that are spontaneously firing at baseline, blockade of  $Ca_v1.3$  upon  $\beta$ -adrenergic stimulation decreased the firing rate back to the basal level (Figure 2). Then, both in dormant and firing SANC,  $Ca_v1.3$  inhibition brings the cells back to their basal state (dormancy in dormant SANC and basal firing rate in firing SANC) as if the cells had “no memory” of being under  $\beta$ -adrenergic stimulation. Thus, even if it can be assumed that other effectors such as PLB are still in their phosphorylated state under continuous  $Ca_v1.3$  inhibition, this is apparently not sufficient to maintain fast pacemaking.

Our study shows that the activity of  $Ca_v1.3$  channels constitutes a critical factor for maintaining spontaneous activity in dormant SANC and a high frequency of firing in active SANC under  $\beta$ -adrenergic activation. These data are indicative of an important role for  $Ca_v1.3$  channels in the  $\beta$ -adrenergic regulation of SANC firing. Nevertheless, other mechanisms are potentially involved in the  $\beta$ -adrenergic regulation of pacemaker activity as a whole under different physiological conditions. Indeed, we reported previously that the systemic non-conditional genetic ablation of  $Ca_v1.3$  channels in knockout mice ( $Ca_v1.3^{-/-}$ ) does not prevent the ISO-induced acceleration of heart rate in vivo [46] and in firing SANC [29]. On one hand, these observations indicate that other mechanisms that are phosphorylated by cAMP-PKA pathway can compensate for  $Ca_v1.3$  loss of function. f-channels, the cardiac NCX and RyR-dependent  $Ca^{2+}$  release are obvious candidates to mediate the  $\beta$ -adrenergic regulation of SANC firing in the absence of  $Ca_v1.3$  channels. On the other hand, studies in mice and humans show that the loss of function of the cAMP-dependent regulation of HCN4 channels is also not required for heart rate regulation by the autonomic nervous system [19,43,47]. The conclusion that HCN4 channels are not critical for the chronotropic response in mouse is supported by two other studies on inducible Hcn4 knockout mice [48,49] or by the cardiac-specific and time-dependent expression of a dominant-negative HCN4 subunit carrying silenced conductance [50]. It is thus tempting to speculate that  $Ca_v1.3$  channels may cooperate with NCX and RyR-dependent  $Ca^{2+}$  release to increase pacemaking upon  $\beta$ -adrenergic regulation in firing SANC after the loss of function of f-channels.

#### 4.3. $Ca_v1.3$ Channels Link M-Clock and $Ca^{2+}$ -Clock by Regulating LCRs

We showed in a previous study that the genetic ablation of  $Ca_v1.3$   $Ca^{2+}$  decreases LCR numbers in SANC from  $Ca_v1.3^{-/-}$  mice [29]. Here, we provide important pharmacologic evidence with the selective inhibition of  $I_{Cav1.3}$  using  $Ca_v1.2^{DHP-/-}$  SANC. Indeed, blockade of  $I_{Cav1.3}$  decreased the number and size of LCRs and disrupted spatiotemporal synchronization in late diastole (Figure 4, Table 2). It has been demonstrated by numerical simulations that the synchronization of LCRs and augmented integral LCR  $Ca^{2+}$  signal during DD is required along increased sarcolemmal currents ( $I_f$ ,  $I_{CaL}$ ) to accelerate AP firing rate in response to  $\beta$ -adrenergic stimulation [14,51]. Our results are consistent with this model of the increased synchronization of LCRs over time in response to  $\beta$ -adrenergic stimulation. In contrast, upon the inhibition of  $Ca_v1.3$  channels, LCRs began to move away from the  $Ca^{2+}$  transient, their mean distance increasing, whereas the proportion of LCRs close to the transient (<20 ms) decreased, indicating that  $Ca_v1.3$  channels regulate LCR synchronization (Figure 4). Concomitantly with the abolition of inward  $I_{Cav1.3}$   $Ca^{2+}$  and sustained inward ( $I_{st}$ ) [26] current, extreme LCR desynchronization could be an important contributing factor for arrested firing in dormant SANC, as LCRs began to desynchronize right before the cell stopped (Supplementary Figure S4). Important evidence of a direct link between  $Ca_v1.3$  channels and LCRs is that the desynchronization of LCRs by the inhibition of  $Ca_v1.3$  channels is not dependent on SERCA activity because Nife did not decrease the pS16-PLB/PLB ratio (Supplementary Figure S5). However, we observed a reduction in pThr17-PLB/PLB ratio in ISO + Nife condition that may be induced by the decrease in basal

diastolic calcium following the inhibition of  $\text{Ca}_v1.3$  channels. Furthermore, we previously showed that  $\text{Ca}_v1.3$  channels preferentially co-localize with RyR2, suggesting a spatial proximity [28]. Then, LCR synchronization upon  $\beta$ -adrenergic stimulation could either be due to increased  $I_{\text{Cav}1.3}$ -mediated  $\text{Ca}^{2+}$  entry during diastole leading to an enhanced  $\text{Ca}^{2+}$ -induced  $\text{Ca}^{2+}$  release mechanism, or to conformational rearrangement in RyR2 and  $\text{Ca}_v1.3$  channels upon phosphorylation, or even both.

#### 4.4. Physiological Relevance of Dormant SANC In Vivo

If dormant SANC are indeed present in vivo, as suggested by two different studies [18,19], what could their physiological importance be? Hennis et al. [52], suggested that dormant SANC could act as “brakes” on neighboring firing cells through tonic electrical interactions via gap junction. However, they based their hypothesis on their observation of hyperpolarized ( $-75$  mV) dormant cells when the cAMP-dependent regulation of HCN4 channels is abolished [19]. Here, we observed a majority of dormant SANC, with the preserved cAMP-dependent regulation of HCN4 channels that were depolarized ( $-35$  mV), even though some cells were hyperpolarized ( $-70$  mV) (Supplementary Figure S1). Heterogeneity in the whole SAN tissue in terms of cell behavior, shapes and protein expression has been previously described [2,53,54]. The leading pacemaker site of SAN permanently shifts upon different external stimuli such as adrenergic and cholinergic stimulation, conferring to the SAN adaptability to several constraints [55]. We show here that there is a different spatial distribution of  $\text{Ca}_v1.3$  and HCN4 channels within the entire SAN and even among SANC (Figure 7). This suggests the attractive possibility that different pacemaking mechanisms exist within the SAN. For example, why does  $\text{Ca}_v1.3$  inhibition stop firing in dormant SANC, while it only decreased the frequency back to a basal level in firing SANC? This may be explained by imagining a firing mechanism mostly based on  $\text{Ca}_v1.3$  in dormant SANC, while  $\text{Ca}_v1.3$  channels are important for a positive  $\beta$ -adrenergic chronotropic effect in firing SANC. In line with the idea of different firing mechanisms is that even if the firing rate is the same in dormant and firing SANC under  $\beta$ -adrenergic stimulation, AP characteristics are significantly different between the two cell types (Supplementary Figure S2). This shows that firing in dormant SANC can reach a high frequency and serve as subsidiary pacemaker cells when all SANC are needed to generate a chronotropic response, while having a different pattern of expression in the actors of pacemaking ( $\text{Ca}_v1.3$ , HCN4). It is thus possible that not all SANC contribute to heartbeat at the same time, as suggested for the cat SAN [56]. However, SANC with different ion channel expression span the whole SAN and represent a reserve pool of SANC capable of reaching normal frequency upon multiple external stimuli, ensuring SAN adaptability. Indeed, a recent study showed that all SANC with various basal rates tend to reach the same frequency under  $\beta$ -adrenergic stimulation [23]. In this regard, our data indicate that in dormant SANC,  $\text{Ca}_v1.3$  channels are essential to reach this synchronized average rate among SANC during the fight-or-flight response.

## 5. Conclusions

Our results demonstrate that the switch from dormancy to firing mode upon  $\beta$ -adrenergic stimulation in SANC is reliant upon  $\text{Ca}_v1.3$  channels. We show that  $\text{Ca}_v1.3$  channels are an important mediator of the positive chronotropic response to ISO in firing mouse SANC. Our study raises the possibility of different pacemaking mechanisms among SANC, allowing the adaptability of the SAN to different external stimuli while maintaining a physiologically fit beating rate. However, future studies will be needed to address the importance of the phosphorylation of  $\text{Ca}_v1.3$  channels in the generation of basal and  $\beta$ -adrenergic-stimulated pacemaker activity in SANC, and to distinguish it from the effects of selective pharmacologic blockade of the current as shown in our study. Likewise, it will be important to study the importance of the  $\beta$ -adrenergic-activated phosphorylation of RyRs in sustaining firing in SANC. The importance of  $\text{Ca}_v1.3$  channels in the regulation of SANC firing rate could help explain the age-dependent decline in maximal heart rate, especially under exercise. The inhibition of the  $\text{Ca}_v1.3$ -dependent  $\beta$ -adrenergic regulation



of heart rate may constitute an additional mechanism underlying bradycardia induced by the administration of  $\beta$ -blockers. Conversely, selective inhibitors of  $\text{Ca}_v1.3$  channels may help to reduce heart rate under conditions of inappropriate sinus tachycardia.

**Author Contributions:** Conceptualization: P.M., J.-Y.L.G. and M.E.M.; methodology: J.L., E.T., P.M., I.B., N.L. and A.F.; software: O.B.; validation: P.M., J.-Y.L.G. and M.E.M.; formal analysis: J.L., E.T., P.M., N.L., A.F. and O.B.; investigation: J.L., E.T., P.M., N.L., A.F. and I.B.; writing—original draft preparation: J.L.; supervision: M.E.M., J.-Y.L.G. and P.M.; funding acquisition: M.E.M. All authors have read and agreed to the published version of the manuscript.

**Funding:** The IGF group is a member of the Laboratory of Excellence Ion Channel Science and Therapeutics supported by a grant from ANR (ANR-11-LABX-0015). Research was supported by the Fondation pour la Recherche Medicale “Physiopathologie Cardiovasculaire” (DPC20171138970 to M.E.M.) and the Fondation Leducq (TNE FANTASY 19CVD03 to Matteo E. Mangoni and Peter J. Mohler). Julien Louradour is a recipient of a PhD fellowship from the French Ministry of Education and Research and of a temporary PhD fellowship from the FANTASY Network. Olivier Bortolotti was supported by the Double Cursus Rabelais Santé-Sciences from MUSE Montpellier and EpiGenMed and by the Ecole de l’Inserm Liliane Bettencourt.

**Institutional Review Board Statement:** The study is in accordance with the Guide for the Care and Use of Laboratory Animals published by the US national Institute of Health (NIH Publication No. 85-23, revised 1996) and European directives (2010/63/EU). Experimental procedures were approved by the Ethical Committee of the University of Montpellier and the French Ministry of Agriculture (protocol no: 2017010310594939).

**Acknowledgments:** We thank Laura Rolland and Clémentine Philibert (Institut de Génomique Fonctionnelle, Montpellier) for precious advice on immunostaining experiments, and Olivier Cazorla (PhyMedExp, Montpellier) for sharing reagents. We thank the staff of the iExplore BioCampus Facility of Montpellier for breeding the mouse line. We also thank the Montpellier Ressources Imagerie for their help with confocal microscopy.

**Conflicts of Interest:** The authors declare no conflict of interest.

## References

1. Kennedy, A.; Finlay, D.D.; Guldenring, D.; Bond, R.; Moran, K.; McLaughlin, J. The Cardiac Conduction System: Generation and Conduction of the Cardiac Impulse. *Crit. Care Nurs. Clin. N. Am.* **2016**, *28*, 269–279. [[CrossRef](#)]
2. Mangoni, M.E.; Nargeot, J. Genesis and Regulation of the Heart Automaticity. *Physiol. Rev.* **2008**, *88*, 919–982. [[CrossRef](#)]
3. DiFrancesco, D. Pacemaker Mechanisms in Cardiac Tissue. *Annu. Rev. Physiol.* **1993**, *55*, 455–472. [[CrossRef](#)]
4. Lakatta, E.G.; Maltsev, V.A.; Vinogradova, T.M. A Coupled SYSTEM of Intracellular Ca<sup>2+</sup> Clocks and Surface Membrane Voltage Clocks Controls the Timekeeping Mechanism of the Heart's Pacemaker. *Circ. Res.* **2010**, *106*, 659–673. [[CrossRef](#)]
5. DiFrancesco, D. The Role of the Funny Current in Pacemaker Activity. *Circ. Res.* **2010**, *106*, 434–446. [[CrossRef](#)]
6. Mangoni, M.E.; Couette, B.; Marger, L.; Bourinet, E.; Striessnig, J.; Nargeot, J. Voltage-Dependent Calcium Channels and Cardiac Pacemaker Activity: From Ionic Currents to Genes. *Prog. Biophys. Mol. Biol.* **2006**, *90*, 38–63. [[CrossRef](#)]
7. Mesirca, P.; Torrente, A.G.; Mangoni, M.E. Functional Role of Voltage Gated Ca<sup>2+</sup> Channels in Heart Automaticity. *Front. Physiol.* **2015**, *6*, 19. [[CrossRef](#)]
8. Lei, M.; Jones, S.A.; Liu, J.; Lancaster, M.K.; Fung, S.S.-M.; Dobrzynski, H.; Camelliti, P.; Maier, S.K.G.; Noble, D.; Boyett, M.R. Requirement of Neuronal- and Cardiac-Type Sodium Channels for Murine Sinoatrial Node Pacemaking. *J. Physiol.* **2004**, *559*, 835–848. [[CrossRef](#)]
9. Demion, M.; Bois, P.; Launay, P.; Guinamard, R. TRPM4, a Ca<sup>2+</sup>-Activated Nonselective Cation Channel in Mouse Sinoatrial Node Cells. *Cardiovasc. Res.* **2007**, *73*, 531–538. [[CrossRef](#)]
10. Hof, T.; Simard, C.; Rouet, R.; Sallé, L.; Guinamard, R. Implication of the TRPM4 Nonselective Cation Channel in Mammalian Sinus Rhythm. *Heart Rhythm* **2013**, *10*, 1683–1689. [[CrossRef](#)]
11. Ju, Y.-K.; Chu, Y.; Chaulet, H.; Lai, D.; Gervasio, O.L.; Graham, R.M.; Cannell, M.B.; Allen, D.G. Store-Operated Ca<sup>2+</sup> Influx and Expression of TRPC Genes in Mouse Sinoatrial Node. *Circ. Res.* **2007**, *100*, 1605–1614. [[CrossRef](#)]
12. Vinogradova, T.M.; Zhou, Y.-Y.; Maltsev, V.; Lyashkov, A.; Stern, M.; Lakatta, E.G. Rhythmic Ryanodine Receptor Ca<sup>2+</sup> Releases during Diastolic Depolarization of Sinoatrial Pacemaker Cells Do Not Require Membrane Depolarization. *Circ. Res.* **2004**, *94*, 802–809. [[CrossRef](#)]
13. Yaniv, Y.; Lakatta, E.G.; Maltsev, V.A. From Two Competing Oscillators to One Coupled-Clock Pacemaker Cell System. *Front. Physiol.* **2015**, *6*, 28. [[CrossRef](#)]
14. Lyashkov, A.E.; Behar, J.; Lakatta, E.G.; Yaniv, Y.; Maltsev, V.A. Positive Feedback Mechanisms among Local Ca Releases, NCX, and ICaL Ignite Pacemaker Action Potentials. *Biophys. J.* **2018**, *114*, 1176–1189. [[CrossRef](#)]
15. Vinogradova, T.M.; Brochet, D.; Sirenko, S.; Li, Y.; Spurgeon, H.; Lakatta, E.G. Sarcoplasmic Reticulum Ca<sup>2+</sup> Pumping Kinetics Regulates Timing of Local Ca<sup>2+</sup> Releases and Spontaneous Beating Rate of Rabbit Sinoatrial Node Pacemaker Cells. *Circ. Res.* **2010**, *107*, 767–775. [[CrossRef](#)]
16. DiFrancesco, D.; Tortora, P. Direct Activation of Cardiac Pacemaker Channels by Intracellular Cyclic AMP. *Nature* **1991**, *351*, 145–147. [[CrossRef](#)]
17. Vinogradova, T.M.; Lakatta, E.G. Dual Activation of Phosphodiesterase 3 and 4 Regulates Basal Cardiac Pacemaker Function and Beyond. *Int. J. Mol. Sci.* **2021**, *22*, 8414. [[CrossRef](#)]
18. Bychkov, R.; Juhaszova, M.; Tsutsui, K.; Coletta, C.; Stern, M.D.; Maltsev, V.A.; Lakatta, E.G. Synchronized Cardiac Impulses Emerge From Heterogeneous Local Calcium Signals within and Among Cells of Pacemaker Tissue. *JACC Clin. Electrophysiol.* **2020**, *6*, 907–931. [[CrossRef](#)]
19. Fenske, S.; Hennis, K.; Rötzer, R.D.; Brox, V.F.; Becirovic, E.; Scharr, A.; Gruner, C.; Ziegler, T.; Mehlfeld, V.; Brennan, J.; et al. CAMP-Dependent Regulation of HCN4 Controls the Tonic Entrainment Process in Sinoatrial Node Pacemaker Cells. *Nat. Commun.* **2020**, *11*, 5555. [[CrossRef](#)]

20. Kim, M.S.; Maltsev, A.V.; Monfredi, O.; Maltseva, L.A.; Wirth, A.; Florio, M.C.; Tsutsui, K.; Riordon, D.R.; Parsons, S.P.; Tagirova, S.; et al. Heterogeneity of Calcium Clock Functions in Dormant, Dysrhythmically and Rhythmically Firing Single Pacemaker Cells Isolated from SA Node. *Cell Calcium* **2018**, *74*, 168–179. [[CrossRef](#)]
21. Tsutsui, K.; Florio, M.C.; Yang, A.; Wirth, A.N.; Yang, D.; Kim, M.S.; Ziman, B.D.; Bychkov, R.; Monfredi, O.J.; Maltsev, V.A.; et al. CAMP-Dependent Signaling Restores AP Firing in Dormant SA Node Cells via Enhancement of Surface Membrane Currents and Calcium Coupling. *Front. Physiol.* **2021**, *12*, 596832. [[CrossRef](#)] [[PubMed](#)]
22. Tsutsui, K.; Monfredi, O.; Sirenko-Tagirova, S.; Maltseva, L.; Bychkov, R.; Kim, M.; Ziman, B.; Tarasov, K.; Tarasova, Y.; Zhang, J.; et al. A Coupled-Clock System Drives the Automaticity of Human Sinoatrial Nodal Pacemaker Cells. *Sci. Signal.* **2018**, *11*, eaap7608. [[CrossRef](#)]
23. Kim, M.S.; Monfredi, O.; Maltseva, L.A.; Lakatta, E.G.; Maltsev, V.A.  $\beta$ -Adrenergic Stimulation Synchronizes a Broad Spectrum of Action Potential Firing Rates of Cardiac Pacemaker Cells toward a Higher Population Average. *Cells* **2021**, *10*, 2124. [[CrossRef](#)]
24. Marionneau, C.; Couette, B.; Liu, J.; Li, H.; Mangoni, M.E.; Nargeot, J.; Lei, M.; Escande, D.; Demolombe, S. Specific Pattern of Ionic Channel Gene Expression Associated with Pacemaker Activity in the Mouse Heart. *J. Physiol.* **2005**, *562*, 223–234. [[CrossRef](#)]
25. Mangoni, M.E.; Couette, B.; Bourinet, E.; Platzer, J.; Reimer, D.; Striessnig, J.; Nargeot, J. Functional Role of L-Type Cav1.3  $\text{Ca}^{2+}$  Channels in Cardiac Pacemaker Activity. *Proc. Natl. Acad. Sci. USA* **2003**, *100*, 5543–5548. [[CrossRef](#)]
26. Toyoda, F.; Mesirca, P.; Dubel, S.; Ding, W.-G.; Striessnig, J.; Mangoni, M.E.; Matsuura, H. CaV1.3 L-Type  $\text{Ca}^{2+}$  Channel Contributes to the Heartbeat by Generating a Dihydropyridine-Sensitive Persistent  $\text{Na}^+$  Current. *Sci. Rep.* **2017**, *7*, 7869. [[CrossRef](#)]
27. Baudot, M.; Torre, E.; Bidaud, I.; Louradour, J.; Torrente, A.G.; Fossier, L.; Talssi, L.; Nargeot, J.; Barrère-Lemaire, S.; Mesirca, P.; et al. Concomitant Genetic Ablation of L-Type Cav1.3 (A1D) and T-Type Cav3.1 (A1G)  $\text{Ca}^{2+}$  Channels Disrupts Heart Automaticity. *Sci. Rep.* **2020**, *10*, 18906. [[CrossRef](#)]
28. Christel, C.J.; Cardona, N.; Mesirca, P.; Herrmann, S.; Hofmann, F.; Striessnig, J.; Ludwig, A.; Mangoni, M.E.; Lee, A. Distinct Localization and Modulation of Cav1.2 and Cav1.3 L-Type  $\text{Ca}^{2+}$  Channels in Mouse Sinoatrial Node. *J. Physiol.* **2012**, *590*, 6327–6341. [[CrossRef](#)]
29. Torrente, A.G.; Mesirca, P.; Neco, P.; Rizzetto, R.; Dubel, S.; Barrere, C.; Sinegger-Brauns, M.; Striessnig, J.; Richard, S.; Nargeot, J.; et al. L-Type Cav1.3 Channels Regulate Ryanodine Receptor-Dependent  $\text{Ca}^{2+}$  Release during Sinoatrial Node Pacemaker Activity. *Cardiovasc. Res.* **2016**, *109*, 451–461. [[CrossRef](#)]
30. Sinegger-Brauns, M.J.; Hetzenauer, A.; Huber, I.G.; Renström, E.; Wietzorrek, G.; Berjukov, S.; Cavalli, M.; Walter, D.; Koschak, A.; Waldschütz, R.; et al. Isoform-Specific Regulation of Mood Behavior and Pancreatic Beta Cell and Cardiovascular Function by L-Type  $\text{Ca}^{2+}$  Channels. *J. Clin. Investig.* **2004**, *113*, 1430–1439. [[CrossRef](#)]
31. Mangoni, M.E.; Nargeot, J. Properties of the Hyperpolarization-Activated Current (I<sub>f</sub>) in Isolated Mouse Sinoatrial Cells. *Cardiovasc. Res.* **2001**, *52*, 51–64. [[CrossRef](#)]
32. Laasmaa, M.; Karro, N.; Birkedal, R.; Vendelin, M. IOCBIO Sparks Detection and Analysis Software. *PeerJ* **2019**, *7*, e6652. [[CrossRef](#)]
33. Gregory, F.D.; Bryan, K.E.; Pangršič, T.; Calin-Jageman, I.E.; Moser, T.; Lee, A. Harmonin Inhibits Presynaptic Cav1.3  $\text{Ca}^{2+}$  Channels in Mouse Inner Hair Cells. *Nat. Neurosci.* **2011**, *14*, 1109–1111. [[CrossRef](#)]
34. Clark, R.B.; Mangoni, M.E.; Lueger, A.; Couette, B.; Nargeot, J.; Giles, W.R. A Rapidly Activating Delayed Rectifier  $\text{K}^+$  Current Regulates Pacemaker Activity in Adult Mouse Sinoatrial Node Cells. *Am. J. Physiol. Heart Circ. Physiol.* **2004**, *286*, H1757–H1766. [[CrossRef](#)]
35. Verheijck, E.E.; van Ginneken, A.C.; Bourier, J.; Bouman, L.N. Effects of Delayed Rectifier Current Blockade by E-4031 on Impulse Generation in Single Sinoatrial Nodal Myocytes of the Rabbit. *Circ. Res.* **1995**, *76*, 607–615. [[CrossRef](#)]
36. Verheijck, E.E.; van Ginneken, A.C.; Wilders, R.; Bouman, L.N. Contribution of L-Type  $\text{Ca}^{2+}$  Current to Electrical Activity in Sinoatrial Nodal Myocytes of Rabbits. *Am. J. Physiol.* **1999**, *276*, H1064–H1077. [[CrossRef](#)]
37. Vinogradova, T.M.; Lyashkov, A.E.; Zhu, W.; Ruknudin, A.M.; Sirenko, S.; Yang, D.; Deo, S.; Barlow, M.; Johnson, S.; Caffrey, J.L.; et al. High Basal Protein Kinase A-Dependent Phosphorylation Drives Rhythmic Internal  $\text{Ca}^{2+}$  Store Oscillations and Spontaneous Beating of Cardiac Pacemaker Cells. *Circ. Res.* **2006**, *98*, 505–514. [[CrossRef](#)]
38. Vinogradova, T.M.; Zhou, Y.Y.; Bogdanov, K.Y.; Yang, D.; Kuschel, M.; Cheng, H.; Xiao, R.P. Sinoatrial Node Pacemaker Activity Requires  $\text{Ca}^{2+}$ /Calmodulin-Dependent Protein Kinase II Activation. *Circ. Res.* **2000**, *87*, 760–767. [[CrossRef](#)]
39. Mesirca, P.; Marger, L.; Toyoda, F.; Rizzetto, R.; Audoubert, M.; Dubel, S.; Torrente, A.G.; Difrancesco, M.L.; Muller, J.C.; Leoni, A.-L.; et al. The G-Protein-Gated  $\text{K}^+$  Channel, IKACH, Is Required for Regulation of Pacemaker Activity and Recovery of Resting Heart Rate after Sympathetic Stimulation. *J. Gen. Physiol.* **2013**, *142*, 113–126. [[CrossRef](#)]
40. Van Borren, M.M.G.J.; Verkerk, A.O.; Wilders, R.; Hajji, N.; Zegers, J.G.; Bourier, J.; Tan, H.L.; Verheijck, E.E.; Peters, S.L.M.; Alewijnse, A.E.; et al. Effects of Muscarinic Receptor Stimulation on  $\text{Ca}^{2+}$  Transient, CAMP Production and Pacemaker Frequency of Rabbit Sinoatrial Node Cells. *Basic Res. Cardiol.* **2010**, *105*, 73–87. [[CrossRef](#)]
41. Koschak, A.; Reimer, D.; Huber, I.; Grabner, M.; Glossmann, H.; Engel, J.; Striessnig, J. Alpha 1D (Cav1.3) Subunits Can Form L-Type  $\text{Ca}^{2+}$  Channels Activating at Negative Voltages. *J. Biol. Chem.* **2001**, *276*, 22100–22106. [[CrossRef](#)] [[PubMed](#)]
42. Weisbrod, D.; Khun, S.H.; Bueno, H.; Peretz, A.; Attali, B. Mechanisms Underlying the Cardiac Pacemaker: The Role of SK4 Calcium-Activated Potassium Channels. *Acta Pharmacol. Sin.* **2016**, *37*, 82–97. [[CrossRef](#)] [[PubMed](#)]
43. Alig, J.; Marger, L.; Mesirca, P.; Ehmke, H.; Mangoni, M.E.; Isbrandt, D. Control of Heart Rate by CAMP Sensitivity of HCN Channels. *Proc. Natl. Acad. Sci. USA* **2009**, *106*, 12189–12194. [[CrossRef](#)] [[PubMed](#)]

44. Saponaro, A.; Cantini, F.; Porro, A.; Bucchi, A.; DiFrancesco, D.; Maione, V.; Donadoni, C.; Introini, B.; Mesirca, P.; Mangoni, M.E.; et al. A Synthetic Peptide That Prevents CAMP Regulation in Mammalian Hyperpolarization-Activated Cyclic Nucleotide-Gated (HCN) Channels. *eLife* **2018**, *7*, e35753. [[CrossRef](#)]
45. Vinogradova, T.M.; Sirenko, S.; Lyashkov, A.E.; Younes, A.; Li, Y.; Zhu, W.; Yang, D.; Ruknudin, A.M.; Spurgeon, H.; Lakatta, E.G. Constitutive Phosphodiesterase Activity Restricts Spontaneous Beating Rate of Cardiac Pacemaker Cells by Suppressing Local Ca<sup>2+</sup> Releases. *Circ. Res.* **2008**, *102*, 761–769. [[CrossRef](#)]
46. Bidaud, I.; Chong, A.C.Y.; Carcouet, A.; Waard, S.D.; Charpentier, F.; Ronjat, M.; Waard, M.D.; Isbrandt, D.; Wickman, K.; Vincent, A.; et al. Inhibition of G Protein-Gated K<sup>+</sup> Channels by Tertiapin-Q Rescues Sinus Node Dysfunction and Atrioventricular Conduction in Mouse Models of Primary Bradycardia. *Sci. Rep.* **2020**, *10*, 9835. [[CrossRef](#)]
47. Schweizer, P.A.; Duhme, N.; Thomas, D.; Becker, R.; Zehelein, J.; Draguhn, A.; Bruehl, C.; Katus, H.A.; Koenen, M. CAMP Sensitivity of HCN Pacemaker Channels Determines Basal Heart Rate but Is Not Critical for Autonomic Rate Control. *Circ. Arrhythmia Electrophysiol.* **2010**, *3*, 542–552. [[CrossRef](#)]
48. Baruscotti, M.; Bucchi, A.; Viscomi, C.; Mandelli, G.; Consalez, G.; Gnecci-Rusconi, T.; Montano, N.; Casali, K.R.; Micheloni, S.; Barbuti, A.; et al. Deep Bradycardia and Heart Block Caused by Inducible Cardiac-Specific Knockout of the Pacemaker Channel Gene *Hcn4*. *Proc. Natl. Acad. Sci. USA* **2011**, *108*, 1705–1710. [[CrossRef](#)]
49. Herrmann, S.; Stieber, J.; Stöckl, G.; Hofmann, F.; Ludwig, A. HCN4 Provides a “depolarization Reserve” and Is Not Required for Heart Rate Acceleration in Mice. *EMBO J.* **2007**, *26*, 4423–4432. [[CrossRef](#)]
50. Mesirca, P.; Alig, J.; Torrente, A.G.; Müller, J.C.; Marger, L.; Rollin, A.; Marquilly, C.; Vincent, A.; Dubel, S.; Bidaud, I.; et al. Cardiac Arrhythmia Induced by Genetic Silencing of “funny” (f) Channels Is Rescued by GIRK4 Inactivation. *Nat. Commun.* **2014**, *5*, 4664. [[CrossRef](#)]
51. Maltsev, V.A.; Lakatta, E.G. A Novel Quantitative Explanation for the Autonomic Modulation of Cardiac Pacemaker Cell Automaticity via a Dynamic System of Sarcolemmal and Intracellular Proteins. *Am. J. Physiol. Heart Circ. Physiol.* **2010**, *298*, H2010–H2023. [[CrossRef](#)] [[PubMed](#)]
52. Hennis, K.; Rötzer, R.D.; Piantoni, C.; Biel, M.; Wahl-Schott, C.; Fenske, S. Speeding Up the Heart? Traditional and New Perspectives on HCN4 Function. *Front. Physiol.* **2021**, *12*, 669029. [[CrossRef](#)] [[PubMed](#)]
53. Boyett, M.R.; Honjo, H.; Kodama, I. The Sinoatrial Node, a Heterogeneous Pacemaker Structure. *Cardiovasc. Res.* **2000**, *47*, 658–687. [[CrossRef](#)]
54. Verheijck, E.E.; van Kempen, M.J.; Veereschild, M.; Lurvink, J.; Jongsma, H.J.; Bouman, L.N. Electrophysiological Features of the Mouse Sinoatrial Node in Relation to Connexin Distribution. *Cardiovasc. Res.* **2001**, *52*, 40–50. [[CrossRef](#)]
55. Lang, D.; Petrov, V.; Lou, Q.; Osipov, G.; Efimov, I.R. Spatiotemporal Control of Heart Rate in a Rabbit Heart. *J. Electrocardiol.* **2011**, *44*, 626–634. [[CrossRef](#)]
56. Opthof, T.; de Jonge, B.; Masson-Pevet, M.; Jongsma, H.J.; Bouman, L.N. Functional and Morphological Organization of the Cat Sinoatrial Node. *J. Mol. Cell. Cardiol.* **1986**, *18*, 1015–1031. [[CrossRef](#)]