



HAL
open science

A Pathovar of *Xanthomonas oryzae* Infecting Wild Grasses Provides Insight Into the Evolution of Pathogenicity in Rice Agroecosystems

Jillian Lang, Alvaro Pérez-Quintero, Ralf Koebnik, Elysa Ducharme, Soungalo Sarra, Hinda Doucoure, Ibrahim Keita, Janet Ziegler, Jonathan Jacobs, Ricardo Oliva, et al.

► To cite this version:

Jillian Lang, Alvaro Pérez-Quintero, Ralf Koebnik, Elysa Ducharme, Soungalo Sarra, et al.. A Pathovar of *Xanthomonas oryzae* Infecting Wild Grasses Provides Insight Into the Evolution of Pathogenicity in Rice Agroecosystems. *Frontiers in Plant Science*, 2019, 10, pp.507. 10.3389/fpls.2019.00507. hal-03626158

HAL Id: hal-03626158

<https://hal.science/hal-03626158>

Submitted on 12 Jul 2022

HAL is a multi-disciplinary open access archive for the deposit and dissemination of scientific research documents, whether they are published or not. The documents may come from teaching and research institutions in France or abroad, or from public or private research centers.

L'archive ouverte pluridisciplinaire **HAL**, est destinée au dépôt et à la diffusion de documents scientifiques de niveau recherche, publiés ou non, émanant des établissements d'enseignement et de recherche français ou étrangers, des laboratoires publics ou privés.



Distributed under a Creative Commons Attribution 4.0 International License



A Pathovar of *Xanthomonas oryzae* Infecting Wild Grasses Provides Insight Into the Evolution of Pathogenicity in Rice Agroecosystems

OPEN ACCESS

Edited by:

Dawn Arnold,
University of the West of England,
United Kingdom

Reviewed by:

Gongyou Chen,
Shanghai Jiao Tong University, China
David J. Studholme,
University of Exeter, United Kingdom

*Correspondence:

Valérie Verdier
valerie.verdier@ird.fr
Jan E. Leach
Jan.Leach@colostate.edu

† These authors have contributed
equally to this work

Specialty section:

This article was submitted to
Plant Microbe Interactions,
a section of the journal
Frontiers in Plant Science

Received: 21 December 2018

Accepted: 02 April 2019

Published: 30 April 2019

Citation:

Lang JM, Pérez-Quintero AL,
Koebnik R, DuCharme E, Sarra S,
Doucoure H, Keita I, Ziegler J,
Jacobs JM, Oliva R, Koita O,
Szurek B, Verdier V and Leach JE
(2019) A Pathovar of *Xanthomonas*
oryzae Infecting Wild Grasses
Provides Insight Into the Evolution
of Pathogenicity in Rice
Agroecosystems.
Front. Plant Sci. 10:507.
doi: 10.3389/fpls.2019.00507

Jillian M. Lang^{1,2†}, Alvaro L. Pérez-Quintero^{1,2†}, Ralf Koebnik², Elysa DuCharme¹,
Soungalo Sarra³, Hinda Doucoure⁴, Ibrahim Keita⁴, Janet Ziegler⁵,
Jonathan M. Jacobs^{1,2,6}, Ricardo Oliva⁷, Ousmane Koita⁴, Boris Szurek²,
Valérie Verdier^{1,2*} and Jan E. Leach^{1*}

¹ Department of Bioagricultural Sciences and Pest Management, Colorado State University, Fort Collins, CO, United States, ² IRD, Cirad, Univ. Montpellier, IPME, Montpellier, France, ³ Centre Régional de Recherche Agronomique de Niono, Institut d'Economie Rural, Bamako, Mali, ⁴ Laboratoire de Biologie Moléculaire Appliquée, Université des Sciences Techniques et Technologiques de Bamako, Bamako, Mali, ⁵ Pacific Biosciences, Menlo Park, CA, United States, ⁶ Department of Plant Pathology, Infectious Disease Institute, Ohio State University, Columbus, OH, United States, ⁷ International Rice Research Institute, Los Baños, Philippines

Xanthomonas oryzae (*Xo*) are globally important rice pathogens. Virulent lineages from Africa and Asia and less virulent strains from the United States have been well characterized. *Xanthomonas campestris* pv. *leersiae* (*Xcl*), first described in 1957, causes bacterial streak on the perennial grass, *Leersia hexandra*, and is a close relative of *Xo*. *L. hexandra*, a member of the Poaceae, is highly similar to rice phylogenetically, is globally ubiquitous around rice paddies, and is a reservoir of pathogenic *Xo*. We used long read, single molecule real time (SMRT) genome sequences of five strains of *Xcl* from Burkina Faso, China, Mali, and Uganda to determine the genetic relatedness of this organism with *Xo*. Novel transcription activator-like effectors (TALEs) were discovered in all five strains of *Xcl*. Predicted TALE target sequences were identified in the *Leersia perrieri* genome and compared to rice susceptibility gene homologs. Pathogenicity screening on *L. hexandra* and diverse rice cultivars confirmed that *Xcl* are able to colonize rice and produce weak but not progressive symptoms. Overall, based on average nucleotide identity (ANI), type III (T3) effector repertoires, and disease phenotype, we propose to rename *Xcl* to *X. oryzae* pv. *leersiae* (*Xol*) and use this parallel system to improve understanding of the evolution of bacterial pathogenicity in rice agroecosystems.

Keywords: *Xanthomonas oryzae*, transcription activator-like effectors (TALEs), agroecosystem, cutgrass, rice

INTRODUCTION

Rice is a staple crop for more than half the world. Severe rice diseases, such as bacterial leaf streak (BLS) caused by *Xanthomonas oryzae* pv. *oryzicola* (*Xoc*) and bacterial blight (BB), caused by *X. o.* pv. *oryzae* (*Xoo*), are increasing in prevalence in parts of Asia and sub-Saharan Africa and cause significant yield losses. In Asia, perennial weeds are considered an important source of primary pathogen inoculum for these two diseases (Ou, 1985; Mew, 1987).

Southern cutgrass (*Leersia hexandra* Swartz) is a common grass found in the southern United States, South America, Africa, and Asia. It is a member of the Poaceae family and is closely related to rice, but diverged from *Oryza* approximately 14 mya (Guo and Ge, 2005). *L. hexandra* is an invasive species that frequently grows along rivers and canals surrounding rice paddies. Because of its close relationship to *Oryza* spp., *Leersia* spp. are included as outgroups in phylogenetic studies. Recent genome investigations of *Leersia perrieri*, a cutgrass found in Madagascar, were done to compare repetitive elements and transposable elements among *Oryza* sp. and to uncover orthologs of the important submergence tolerance gene, *SUB1* (Copetti, 2013; Copetti et al., 2015; dos Santos et al., 2017). One-third of the *L. perrieri* genome was found to consist of repeats. The high amount of newly discovered repeats (35%) indicates that the *L. perrieri* genome is evolving rapidly relative to the *Oryza* genus (Copetti, 2013).

Early reports of phytoremediation by *L. hexandra* showed this grass' capacity to sequester Cr, Cu, and Ni, and it has now been proposed as a tool in wastewater treatment (Liu et al., 2011; Wang et al., 2012; You et al., 2013). Interestingly, this and other grasses in this genus, such as *Leersia sayanuka*, *Leersia oryzoides*, and *Leersia japonica*, are susceptible to *Xoo* (Noda and Yamamoto, 2008) and can serve as reservoirs for inoculum. *Xoo* strains isolated from symptomless *L. hexandra* cause BB symptoms in rice, and, in artificially inoculated weed plants, *Xoo* multiplied without evidence of disease (Gonzalez et al., 1991) implicating this grass as an alternative host for the pathogen. These and other findings reinforce that effective integrated management of crop diseases must incorporate knowledge of pathogen interactions with weedy species.

The species *Xo* is highly diverse, and is represented by distinct lineages of *Xoo* from Asia and Africa, *Xoc* from Asia and Africa, and strains not assigned as a pathovar from the United States, *Xo* (Gonzalez et al., 2007; Triplett et al., 2011; Hajri et al., 2012; Poulin et al., 2015; Triplett and Leach, 2016). The term pathovar is used to refer to a strain or set of strains with the same or similar characteristics, differentiated at infrasubspecific level from other strains of the same species or subspecies on the basis of distinctive pathogenicity to one or more plant hosts¹. Poulin et al. (2015) used multi-locus variable-number tandem-repeat analysis (MLVA) to investigate genetic structures of microbial populations (Zhao et al., 2012; Poulin et al., 2015), and suggested that *Xoo* and *Xoc* from Africa had a common Asian ancestor; this conclusion was based on the fact that the allelic richness,

or number of alleles, was significantly less in these populations. However, further analyses on an extensively sampled set of isolates are needed to confirm this ancestral hypothesis.

Xanthomonas spp. inject effector proteins into plant host cells to elicit disease via a type-III (T3) secretion system (White et al., 2009). These proteins can confer pathogenicity and/or dictate host specificity (Jacques et al., 2016). *Xanthomonas* spp. are most notable for production of transcription activator-like effectors (TALEs). TALEs influence host gene expression by directly binding to specific sequences [effector binding elements (EBEs)] in the target promoter as dictated by repeat-variable di-residues (RVDs) at the 12 and 13 amino acid position in the central repeat region (CRR) (Boch et al., 2009; Moscou and Bogdanove, 2009; White et al., 2009; Bogdanove and Voytas, 2011). The CRR contains different numbers of repeats, each with 33–35 amino acids. TALEs may enhance diseases by targeting susceptibility (S) genes, or may trigger a resistance response through activation of an “executor” resistance gene (R) expression (Boch et al., 2014; Hutin et al., 2015).

The presence of TALE effectors is variable in the genus (Jacques et al., 2016). *Xoo* contain nine to 20 TALEs while *Xoc* can contain up to 29. US *Xo* do not contain any TALEs, and due to this absence, have been employed as a tool to study TALE effector biology in rice (Ryba-White et al., 1995; Verdier et al., 2012). New sequencing technologies and predictive algorithms have accelerated the characterization of TALEs and their host gene targets. In particular, long read, single molecule real time (SMRT) sequencing (Pacific Biosciences, Menlo Park, CA, United States) has enabled the rapid assembly of TALE sequences that are otherwise laborious to capture due to their highly repetitive structure (Eid et al., 2009; Booher et al., 2015; Wilkins et al., 2015; Grau et al., 2016; Peng et al., 2016; Quibod et al., 2016; Tran et al., 2018). Collectively, TALE repertoires (TALomes) encoding polymorphic groups that have contrasted abilities to induce susceptibility target genes potentially underlie host adaptation at a small evolutionary scale (Doucouré et al., 2018). The *Xo* group has clearly undergone significant evolution influenced by geography, environment, and host, and TALomes can provide critical insight into how these events occur.

Xanthomonas campestris pv. *leersiae* (*Xcl*), a pathogen of *L. hexandra*, was previously shown to group distinctly from *Xo* by host range and phylogenetic analysis (Fang et al., 1957; Parkinson et al., 2009). However, using a multi-locus sequence alignment (MLSA) analysis Triplett et al. (2011) showed that *Xcl* strain NCPPB4346, which was isolated from southern cutgrass in China, groups within the *Xo* cluster, yet it could not be assigned to any described pathovar. A more recently isolated strain, BAI23 from weeds in Burkina Faso, showed high sequence similarity with *Xcl* NCPPB4346 based on a MLSA analysis as well as the presence of TALEs (Wonni et al., 2014). Together, the two strains form a distinct genetic cluster within *X. oryzae*.

Prediction algorithms based on the TALE's specific RVD pattern and their corresponding degenerate DNA code has facilitated identification of plant target genes whose promoters contain EBEs for TALE binding (Doyle et al., 2012; Grau et al., 2013, 2016; Pérez-Quintero et al., 2013; Booher and Bogdanove, 2014; Yang et al., 2014). Many S genes are transporters

¹www.isppweb.org/about_tppb_naming.asp

(sugar or sulfate) or transcription factors and upon induction facilitate bacterial colonization and symptom development (Hutin et al., 2015; Tran et al., 2018). Although a large body of work is available on TALEs from *Xoo* and *Xoc*, no information has been reported on the TALEs from *Xcl*, how they compare to those in other *X. oryzae*, and the nature of their predicted targets within *Leersia* spp. In this study, we used comparative genomics, identification of T3 effectors, TALomes, and disease phenotyping to characterize *Xcl*. We used gene target prediction algorithms to identify potential *Xcl* TALE gene targets in draft *Leersia* genome sequences. Finally, we provide evidence to support renaming *Xcl* to *X. oryzae* pv. *leersiae* (Fang et al., 1957) and will refer to this organism as *Xol* throughout this work.

MATERIALS AND METHODS

Bacterial Strains and Plant Varieties

Bacterial strains included in this study are listed in **Table 1**. Bacteria were cultured on peptone sucrose agar (PSA) at 28°C for plant inoculations. Genomic DNA for sequencing was isolated from *Xol* strains BAI23, BB 151-3, BB 156-2, NCPPB4346, and NJ 6.1.1 grown for 48 h on nutrient agar at 28°C (Lang et al., 2014; Wonni et al., 2014). Barley (*Hordeum vulgare* L. cultivar Morex), wheat (*Triticum aestivum* cv. Chinese Spring) and tobacco (*Nicotiana tabacum*) were grown in a growth chamber at 22°C, 50% relative humidity, and 16 h of light. Rice (*Oryza sativa*) varieties included in pathogenicity assays were Azucena, Carolina Gold, Cypress, IR64, and Nipponbare.

Southern cutgrass (*L. hexandra*) was collected in Texas, United States, and seed was propagated at Colorado State University. The seed was scarified then germinated in porous ceramic silica (Greens Grade, Profile Products, LLC, Buffalo Grove, IL, United States) and 0.5x Hoagland's solution with the following modifications: 2.5 mM KNO_3 , 1 mM $MgSO_4$, 3 mM KH_2PO_4 , 2.5 $Ca(NO_3)_2$, 0.05 mM $FeSO_4$, and 0.1 mM $(Na)_2EDTA$ (Hoagland and Arnon, 1950). Seed was incubated in a petri dish in the dark for 8 days, then in the light for 30 days at 28°C. Germinated seeds were transplanted into 1-gallon pots with equal parts Greens Grade and ProMix BX (ProMix, Quakertown, PA, United States), and grown in a greenhouse (27 ± 1°C, 16 h day length, and 80–85% relative humidity). Additional plants were obtained from the two mother plants via rhizome propagation. Propagation began 30 days after planting with subsequent propagation every week to allow time for new growth. To promote root growth, plants were placed in the dark for 24 h.

Pathogenicity Assays

Rice varieties were inoculated at 4–5 week-old with suspensions (10^8 CFU mL^{-1}) of bacterial strains listed in **Table 1**. Bacterial suspensions were both infiltrated into the intercellular spaces of rice leaves on either side of the main vein with a needleless syringe and inoculated by leaf clipping as described (Kauffman et al., 1973; Reimers and Leach, 1991). Two leaves were inoculated on each of three to six separate plants; water was included as a negative control. The entire experiment was conducted

twice. Lesions were measured at 12 days post inoculation (dpi), and bacterial numbers *in planta* were quantified as previously described (Verdier et al., 2012).

Molecular Diagnostics

To test relationships of *Xol* to *Xo* (Notomi et al., 2000; Triplett et al., 2011; Wonni et al., 2014), a diagnostic multiplex and loop mediated isothermal amplification (LAMP) PCR were used (Lang et al., 2010, 2014; Wonni et al., 2014). Previously described universal US *Xo* primers were also tested to differentiate *Xol* from this novel US clade within the species (Triplett et al., 2011). UniQPrimer was employed to compare draft *Xol* genomes (BAI23 and NCPPB4346) and generate primers specific to *Xol* as previously described (Ash et al., 2014; Lang et al., 2014, 2017; Juanillas et al., 2018). Specificity was validated by screening *Xol* primers against diverse pools of bacterial genomic DNA (**Table 1**). Primers, expected product size, and optimal annealing temperatures are listed in **Supplementary Table S1**.

Genome Sequencing and Assembly

Long read, SMRT sequencing (PacBio, Menlo Park, CA, United States) data were generated for five *Xol* strains and for the *Xo* strain X11-5A, to be used as an outgroup. DNA for SMRT sequencing was isolated by culturing strains on nutrient agar for 48 h then using the Genomic DNA buffer set and Genomic-tips according manufacturer instructions (Qiagen, Valencia, CA, United States). SMRT sequence was assembled using HGAP v4 (PacBio, Menlo Park, CA, United States). Genomes were circularized using circulator (Hunt et al., 2015). Assemblies and raw data have been deposited in NCBI (BioProject IDs PRJNA522807 and PRJNA522811; BioSample accessions SAMN03862116, SAMN02469650, SAMN10956066-68, SAMN10956070; raw sequencing files SRX5417793-98; Assembly accessions CP036251-56). Assembly CP036251 (X11-5A) replaces draft assembly GCF000212755.1 and assembly CP036253 (NCPPB4346) replaces draft assembly GCF001276975.1 (also in Bioproject PRJNA257008). Accessions for all genomes used in this study are listed in **Supplementary Table S2**.

Phylogenomics and Bioinformatic Analyses

In addition to the five *Xol* sequenced strains, all completely sequenced *X. oryzae* genomes were obtained from the NCBI to be used for comparisons, as well as representative genomes from other *Xanthomonas* species. All genomes and accessions can be found in **Supplementary Table S2**.

Average nucleotide identity (ANI) values were obtained using the ANI-matrix script from the enveomics collection (v1.3) (Rodriguez-R and Konstantinidis, 2016). Parsimony trees based on pan-genome SNPs were obtained using KSNP (v3.0) (Gardner et al., 2015). Multi-locus sequence analysis was made by identifying 33 housekeeping genes in all genome using Amphora2 (Wu and Scott, 2012). Concatenated amino acid sequences of these genes were then aligned using MUSCLE (v3.8.31) (Edgar, 2004), and neighbor-joining

TABLE 1 | Bacterial strains used in phenotyping and molecular diagnostics.

Species	Strain	Origin	Host	Reference or source	Response to diagnostic primer set	
					Xol5	Xol7
<i>Burkholderia andropogonis</i>	3549		<i>Zea mays</i>	L.E. Clafin	–	–
<i>Escherichia coli</i>	DH5 α				–	–
<i>Pseudomonas fuscovaginae</i>	SE-1	Philippines	<i>Oryza sativa</i>	G. Ash	–	–
<i>P. syringae</i> pv. <i>syringae</i>	M108	United States	<i>Solanum lycopersicum</i>	H.F. Schwartz	–	–
<i>Xanthomonas</i> sp.	M136	Mali	<i>O. sativa</i>	V. Verdier	–	–
<i>Xanthomonas</i> sp.	SHU100	Philippines	<i>O. sativa</i> seed	C.M. Vera Cruz	–	–
<i>X. campestris</i> pv. <i>alfalfae</i>	KX-1	United States		L.E. Clafin	–	–
<i>X. c.</i> pv. <i>campestris</i>	X1910	United States	<i>Brassica oleracea</i>	N. Dunlop	–	–
<i>X. c.</i> pv. <i>pelargonii</i>	X5	United States	<i>Geranium</i> sp.	L.E. Clafin	–	–
<i>X. euvesicatoria</i>	85-10	United States	<i>Capsicum frutescens</i>	A. Bogdanove	–	–
<i>X. euvesicatoria</i>	O177	United States	<i>Allium cepa</i>	H.F. Schwartz	–	–
<i>X. oryzae</i>	X11-5A ^a	United States	<i>O. sativa</i>	Triplett et al., 2011	–	–
<i>X. o.</i> pv. <i>leersiae</i>	BAI23 ^a	Burkina Faso	Weeds	V. Verdier, Wonni et al., 2014	+	+
<i>X. o.</i> pv. <i>leersiae</i>	BB 151-3	Uganda	<i>O. sativa</i>	B. Yang, R. Oliva, G. Onaga	+	+
<i>X. o.</i> pv. <i>leersiae</i>	BB 156-2	Uganda	<i>O. sativa</i>	B. Yang, R. Oliva, G. Onaga	+	+
<i>X. o.</i> pv. <i>leersiae</i>	NCPPB4346 ^a	China	<i>Leersia hexandra</i>	Triplett et al., 2011; Wonni et al., 2014	+	+
<i>X. o.</i> pv. <i>leersiae</i>	NJ 6.1.1	Mali	<i>L. hexandra</i>	This study	+	+
<i>X. o.</i> pv. <i>oryzae</i>	A3857	India	<i>O. sativa</i>	J.E. Leach	–	–
<i>X. o.</i> pv. <i>oryzae</i>	BAI3 ^a	Burkina Faso	<i>O. sativa</i>	V. Verdier	–	–
<i>X. o.</i> pv. <i>oryzae</i>	MAI1	Mali	<i>O. sativa</i>	V. Verdier	–	–
<i>X. o.</i> pv. <i>oryzae</i>	NAI8	Niger	<i>O. sativa</i>	V. Verdier	–	–
<i>X. o.</i> pv. <i>oryzae</i>	PXO86	Philippines	<i>O. sativa</i>	C.M. Vera Cruz	–	–
<i>X. o.</i> pv. <i>oryzae</i>	PXO99 ^{Aa}	Philippines	<i>O. sativa</i>	J.E. Leach	–	–
<i>X. o.</i> pv. <i>oryzae</i>	Xoo4	Thailand	<i>O. sativa</i>	J.E. Leach	–	–
<i>X. o.</i> pv. <i>oryzae</i>	Xoo199	Korea	<i>O. sativa</i>	S.H. Choi	–	–
<i>X. o.</i> pv. <i>oryzicola</i>	BLS98	Philippines	<i>O. sativa</i>	C.M. Vera Cruz	–	–
<i>X. o.</i> pv. <i>oryzicola</i>	BLS105	Philippines	<i>O. sativa</i>	C.M. Vera Cruz	–	–
<i>X. o.</i> pv. <i>oryzicola</i>	BLS256 ^a	Philippines	<i>O. sativa</i>	A. Bogdanove	–	–
<i>X. o.</i> pv. <i>oryzicola</i>	BLS305	Philippines	<i>O. sativa</i>	C.M. Vera Cruz	–	–
<i>X. o.</i> pv. <i>oryzicola</i>	MAI4	Mali	<i>O. sativa</i>	V. Verdier	–	–
<i>X. o.</i> pv. <i>oryzicola</i>	MAI10 ^a	Mali	<i>O. sativa</i>	V. Verdier	–	–
<i>X. translucens</i>	LH2-1	United States	<i>L. hexandra</i>	This study	–	–
<i>X. t.</i> pv. <i>cerealis</i>	NCPPB1944	United States	<i>Bromus inermis</i>	V. Verdier	–	–
<i>X. t.</i> pv. <i>phleipratensis</i>	PDDCC5744	United States	<i>Phleum pretense</i>	C. Stevens	–	–
<i>X. t.</i> pv. <i>translucens</i>	B76	United States	<i>Hordeum vulgare</i>	N. Tisserat	–	–
<i>X. t.</i> pv. <i>translucens</i>	NCPPB2389	India	<i>H. vulgare</i>	C. Bragard	–	–
<i>X. t.</i> pv. <i>translucens</i>	UPB787	Paraguay	<i>H. vulgare</i>	C. Bragard	–	–
<i>X. t.</i> pv. <i>undulosa</i>	UPB513	Mexico	<i>T. aestivum</i>	C. Bragard	–	–

^aStrains tested for pathogenicity to *Oryza sativa* and *Leersia hexandra*.

bootstrapped trees were generated using functions (dist.ml; model = “Blosum62”, NJ, bootstrap.pml) of the R package phangorn (v2.4.0) (Schliep, 2011).

Automated annotation of proteins used in this manuscript for all genomes was made using Prokka (v1.14-dev) (Seemann, 2014), annotation for public versions available in the NCBI was made with the NCBI Prokaryotic Genome Annotation Pipeline (PGAP). Groups of orthologs and trees based on

presence/absence of ortholog genes were generated using OrthoFinder (v 2.2.6) (Emms and Kelly, 2015). Dotplots of whole genome alignments were obtained using Gepard (v. 1.4, using word length 100) (Krumstiek et al., 2007). Genome duplications were then quantified using minimap (v.1) (Li, 2016) as implemented in minidot² (parameters = –g 1000 –k 50

²<https://github.com/thackl/minidot>

–w 5 –L 100). Colinear gene regions were identified using DAGchainer (Haas et al., 2004) (parameters = –E 1e–20 –s –g 2000 –x 200 –A 4) using the blast results from orthofinder as inputs. Insertion sequences (ISs) were identified using ISEScan (v1.6) (Xie and Tang, 2017).

Non-TALE T3 effectors were identified by BLASTP (v. 2.6.0+, results were filtered keeping hits with –evalue < 0.0001, > 0% identity in >40% the query length) (Boratyn et al., 2013) of consensus effectors sequences obtained from <http://xanthomonas.org/> against the protein sequences obtained using Prokka. TALE sequences were extracted from each genome using in-house Perl scripts³. Neighbor joining trees were generated from concatenated nucleotide TALE N and C terminal sequences, alignments were made using MUSCLE (Edgar, 2004) and trees were generated using functions (dist.ml; model = “JC”, NJ, bootstrap.pml) of the phangorn (v2.4.0) (Schliep, 2011).

Transcription activator-like effector repeat sequences were aligned using DisTAL v1.2 (Pérez-Quintero et al., 2015) and neighbor joining trees were generated based on DisTAL genetic distances using the R package ape (Paradis et al., 2004). TALE groups were defined using the function cutree in R (height = 4.8) on the DisTAL tree. Predictions for TALE binding sites were made using Talvez on the promoters (–1 kb upstream of the translation start site) of annotated genes in the *L. perrieri* (v1.4) and *O. sativa* cv. Nipponbare (v. MSU7) as previously described (Pérez-Quintero et al., 2013).

RESULTS

Xol Is Pathogenic to Rice and Southern Cutgrass

To better understand the biology of *Xol*, we established a host range by screening for pathogenicity on rice and southern cutgrass (*L. hexandra*) using different inoculation techniques. Relative to the virulent Philippine *Xoc* strain BLS256, the *Xol* strains were less aggressive to rice, and caused less expansive water-soaked leaf streaking on several rice varieties. *Xol* BAI23 was more aggressive than NCPPB4346 on rice varieties Cypress and IR64, and caused more disease than the US *Xo* strain X11-5A on Azucena. Rice variety Carolina Gold was resistant to *Xol*, exhibiting a hypersensitive response and no lesion expansion after infiltration. Both *Xol* strains caused longer lesions on southern cutgrass than *Xo*, but were not as aggressive as *Xoc* BLS256 on rice. *Xo* produced water-soaked spots at the point of infiltration that did not expand on southern cutgrass (Figure 1).

After clip inoculations, lesions caused by *Xol* did not expand on rice or southern cutgrass, unlike those caused by the vascular pathogen *Xoo* (Supplementary Figure S1). When infiltrated into leaves, populations of *Xol* were equivalent to *Xoc* BLS256 and *Xo* X11-5A on rice cvs. Nipponbare or Azucena after 72 hpi (Figure 2). On southern cutgrass, their native host, *Xol* grew to a significantly higher population than *Xo* X11-5A. *Xol* did not cause disease on wheat or barley (Supplementary Figure S2). Phenotyping *Nicotiana* species can serve as a screen for the ability

of microbes, particularly *Xanthomonas* spp., to elicit a non-host resistance response (Gonzalez et al., 2007). *Xol* caused minor chlorosis, but not water soaking nor a hypersensitive response, when infiltrated into *N. tabacum*, similar to the phenotype caused by *Xoo* PXO99A and *Xoc* BLS256 while *Xoo* BAI3 and *Xo* US 11-5A caused a strong hypersensitive response at the site of infiltration on *N. tabacum* similar to prior reports (Gonzalez et al., 2007) (Supplementary Figure S2).

Our studies show that *Xol* is pathogenic to southern cutgrass and mildly pathogenic on diverse varieties of rice, but does not cause disease on barley or wheat, and that some rice varieties exhibit resistance to *Xol*. After inoculation, *Xol* causes symptoms on rice that are most similar to *Xoc*, i.e., expanding lesions when introduced into the intercellular spaces (leaf infiltration) and no spreading lesions when introduced into the xylem vessels (clipping).

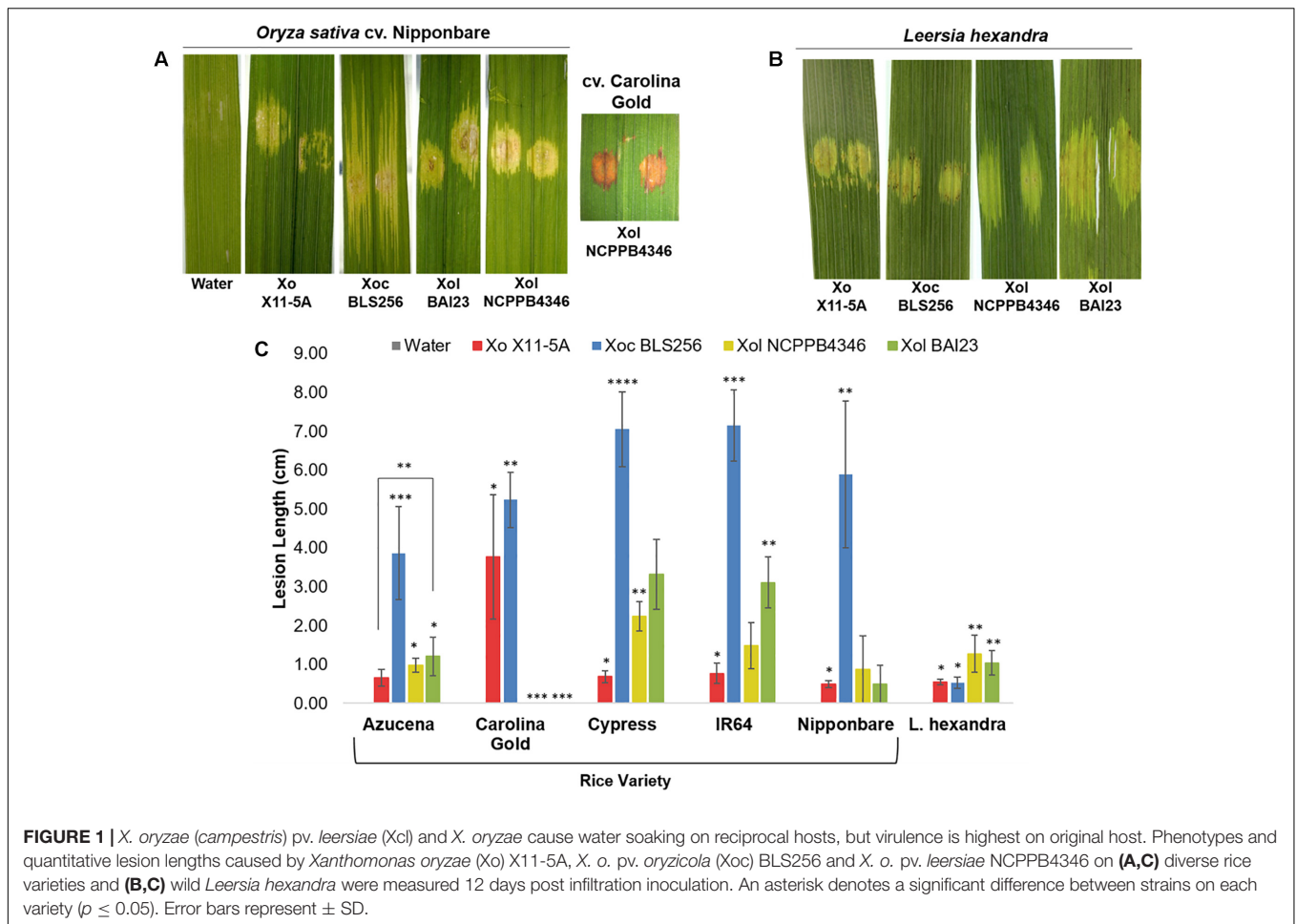
X. campestris pv. *leersiae* Belongs to the *X. oryzae* Species and Is Phylogenetically Close to *Xoc*

Amplification of *Xol* DNA with primers specific for *Xo* but not *Xoc*, *Xoo*, or US *Xo* suggested that *Xol* were related to *X. oryzae*, but distinct from other *Xo* pathovars (Lang et al., 2010; Triplett et al., 2011) (Supplementary Figure S3). We then used SMRT sequencing technology to derive complete genomes of five available *Xol* strains from China (NCPBP4346), Burkina Faso (BAI23), Mali (NJ611), and Uganda (BB151-3 and BB156-2). We calculated pairwise ANI among these and all fully sequenced *X. oryzae* genomes (Rodriguez-R and Konstantinidis, 2016). This analysis showed that *Xol* strains were 99–100% identical to one another, and were 97–99% identical to US *Xo*, *Xoc*, and *Xoo*. *Xol* were most similar to *Xoc* (~98.5%). They were 76–91% similar to other *Xanthomonas* species. *X. vasicola* was the next most similar *Xanthomonas* species to *oryzae*, sharing 91% ANI with *Xol* and all *Xo* (Figure 3). We generated parsimony phylogenetic trees based on pan-genome SNPs using kSNP3 (Gardner et al., 2015), which showed again that *Xol* strains were closely related to *Xoc* (Figure 3). Neighbor-joining trees generated based on MLSA and on presence/absence of ortholog families showed similar groupings, although the placement of African *Xoo* in the tree was variable (Figure 3 and Supplementary Figure S4).

These combined data indicate that our sequenced strains are more closely related to *Xo* than other *Xanthomonas* species and therefore, combined with previously reported MLSA data (Triplett et al., 2011; Wonne et al., 2014), we recommend that the formal taxonomic placement of *Xcl* be included in the species “*oryzae*.” Further biological support for this shift from host range and effector repertoires is described below.

To avoid misidentification of *Xol* as a *Xoc* or *Xoo* in future studies, genomes were compared to identify regions of specificity to base diagnostic primer design with UniQPrimer (Juanillas et al., 2018). Two primer sets were validated for specificity against over 30 closely and distantly related bacteria (Supplementary Table S1). Both primer sets consistently amplified only control *Xol* strains and did not amplify any other bacterial strain tested (Table 1).

³<https://github.com/alperezq/experimenTAL>



Rice Associated *X. oryzae* Show High Genome Plasticity Compared to *X. oryzae* pv. *leersiae*

We generated dotplots to visualize pairwise whole genome alignments to further compare the genomes of *X. oryzae* strains. These alignments showed several genome rearrangements between the different *Xol* strains with respect to each other and to other *X. oryzae* groups. Curiously, we noticed that self-alignments of genomes of pathovars *oryzae* and *oryzicola* overall showed more genomic duplication than those of *Xol* (Figure 4A). To quantify this, we identified colinear regions within each genome that showed these possible genomic duplication events are present in different frequencies in each *X. oryzae* lineage; and that they are more frequent in *Xoc* and Asian *Xoo*, and less frequent in *Xol* and African *Xoo* (Figure 4B). Notably, all *X. oryzae* examined exhibited overall more genomic duplications than other *Xanthomonas* species (Figure 4B).

We also identified colinear arrangements of homologous genes within each genome, meaning genome duplications that involve multiple genes, and again, these were more frequent in *Xoc* and *Xoo* than in *Xol* (Figure 4C). Since some of these duplications may be mediated by duplicative transposition we annotated and quantified insertion sequences (ISs) in the

different *X. oryzae* genomes, which indeed revealed a higher frequency of IS in the groups with higher amounts of duplicated regions (Figure 4). The distribution of IS families was overall similar among *X. oryzae*, with *Xol*'s most resembling the distribution of African *Xoo* (Figure 4E).

Non-TAL T3E Repertoires of *Xol* Are Similar to *Xoc*

Computational prediction of T3E among annotated proteins in each genome revealed that the *Xol* T3E repertoire resembles more closely that of *Xoc*. Nonetheless, some features are unique to *Xol*, specifically all *Xol* strains possess a *xopD* gene that is absent in all other *Xo* genomes. *XopAH* is also present in all *Xol* strains and is shared only by two *Xoc* strains. On the other hand, *Xol* strains lack *xopO* which is present in all *Xoc* strains, and some *Xol* strains seem to lack the otherwise universal effectors *xopW* and *xopK* (Supplementary Figure S5).

Xol Strains Have Distinct TALE Repertoires With Some Similarities to African *Xoo*

Previous Southern blot analyses using conserved TALE probes predicted that *Xol* BAI23 and NCPPB4346 had five and four

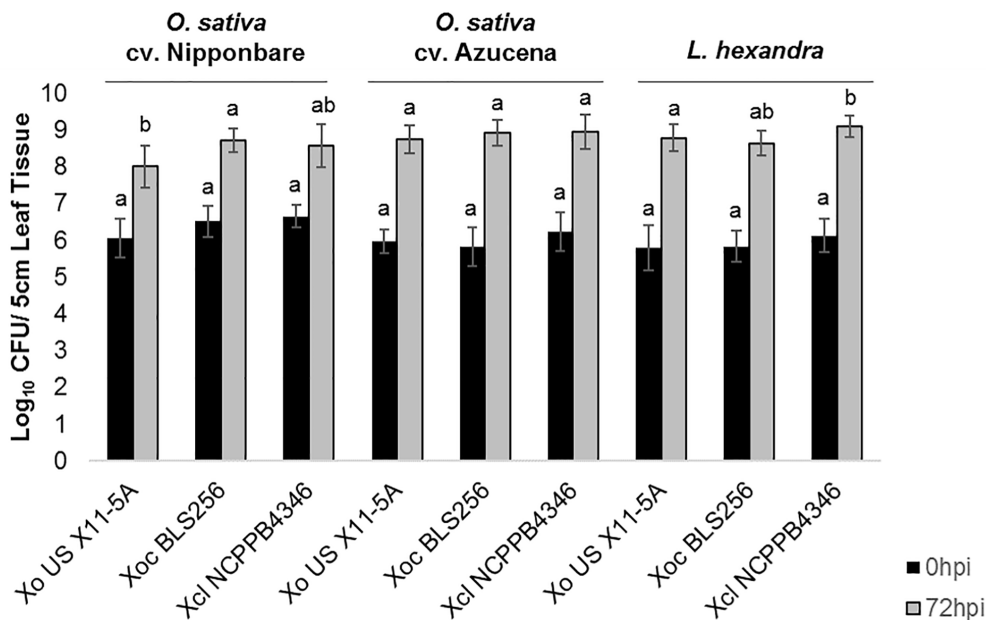


FIGURE 2 | *X. oryzae* pv. *leersiae* can grow and colonize rice as effectively as rice pathogens and rice pathogens can colonize *Leersia hexandra* as effectively as *X. oryzae* pv. *leersiae*. Bacterial population growth in leaves of rice varieties Nipponbare and Azucena and *L. hexandra* inoculated with *X. oryzae* X11-5A, *X. oryzae* pv. *oryzicola* BLS256, and *X. oryzae* pv. *leersiae* NCPPB4346 were quantified at 0 and 72 h post inoculation (hpi). Population sizes were measured in a 5 cm leaf segment infiltrated with each strain. Error bars represent \pm SD of six independent leaves, and letters denote treatments significantly different from one another on each variety ($p \leq 0.05$).

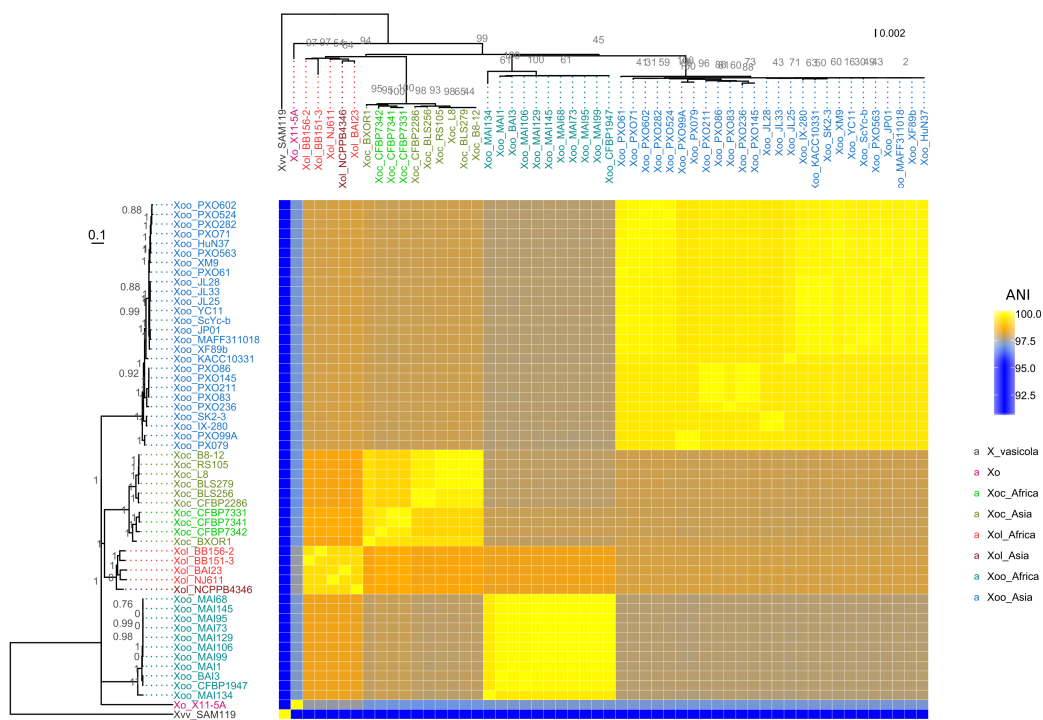
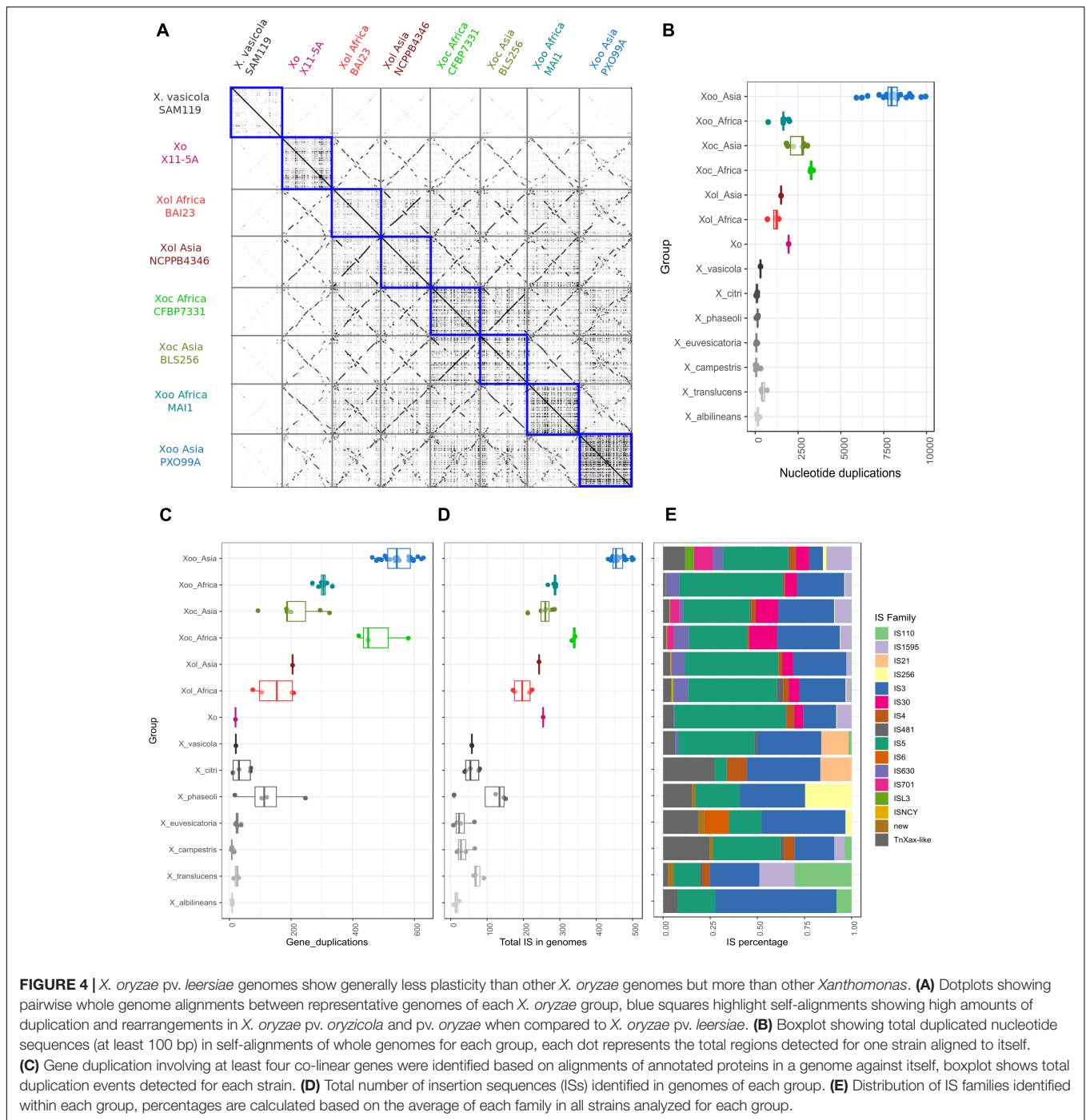
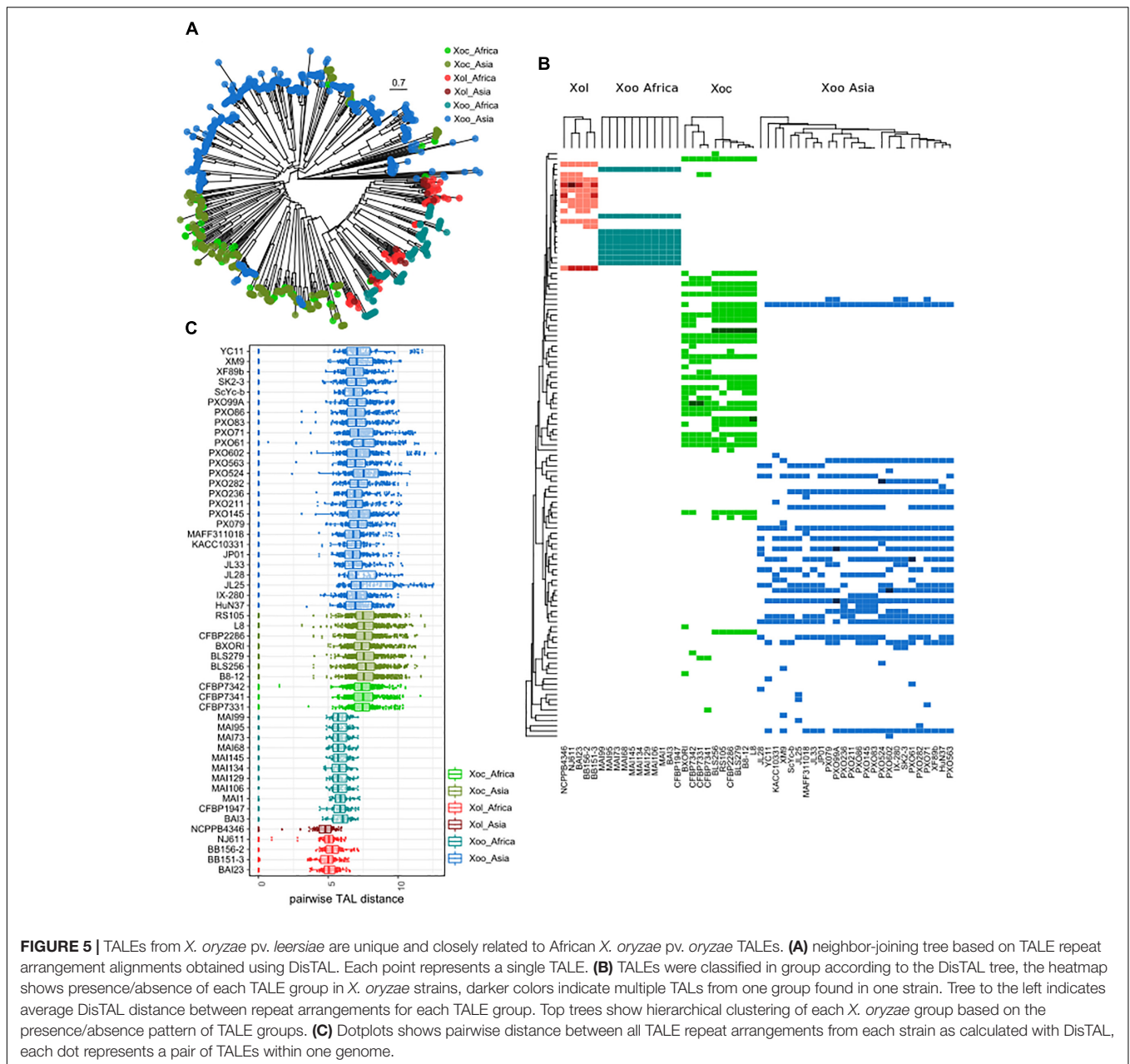


FIGURE 3 | *X. oryzae* pv. *leersiae* (Xol) is a member of *X. oryzae* (Xo) and is closely related to *X. oryzae* pv. *oryzicola* (Xoc). The heatmap shows pairwise average nucleotide identity (ANI) values between fully sequenced *X. oryzae* genomes. (Left) Consensus parsimony tree generated with based on shared pangenome SNPs, numbers in gray indicate node support as outputted by kSNP3, heatmap rows are ordered according to this tree. (Top) MLSA neighbor-joining tree based on concatenated alignments of 33 housekeeping genes, numbers in gray indicate bootstrap support for branches, and heatmap columns are ordered according to this tree. *X. oryzae* pv. *oryzicola* is abbreviated as Xoo and *X. vasicolae* pv. *vasiculorum* as Xv. All species abbreviations are followed by strain name.



TALEs, respectively (Wonni et al., 2014). However, Southern blot analysis cannot resolve TALEs that are close in size. We found in our whole genome sequences that *Xol* strains contained 12 or 13 TALEs each, which is more than the nine TALEs per genome found in African *Xoo*, and less than what is commonly found in *Xoc* (22–29 TALEs) and Asian *Xoo* (13–20 TALEs). No truncated TALEs were identified in any *Xol* genome. As previously reported, no TAL effectors were found in the *Xo* strain X11-5A (Ryba-White et al., 1995; Triplett et al., 2011).

Phylogenetic trees based on the N and C termini of *X. oryzae* TALEs showed that *Xol* TALEs form a distinct group, but seem to be close to African *Xoo* TALEs, despite the overall genomic similarities with *Xoc* (Supplementary Figure S6). We also constructed trees based on similarities in the CRR of using DisTAL, which grouped *Xol* and African *Xoo* together in a subgroup that also includes *Xoc* (Figure 5A). We used the DisTAL tree to define TALE groups based on repeat region similarities, *Xol* TALEs were classified in 12 groups (Figure 5B).



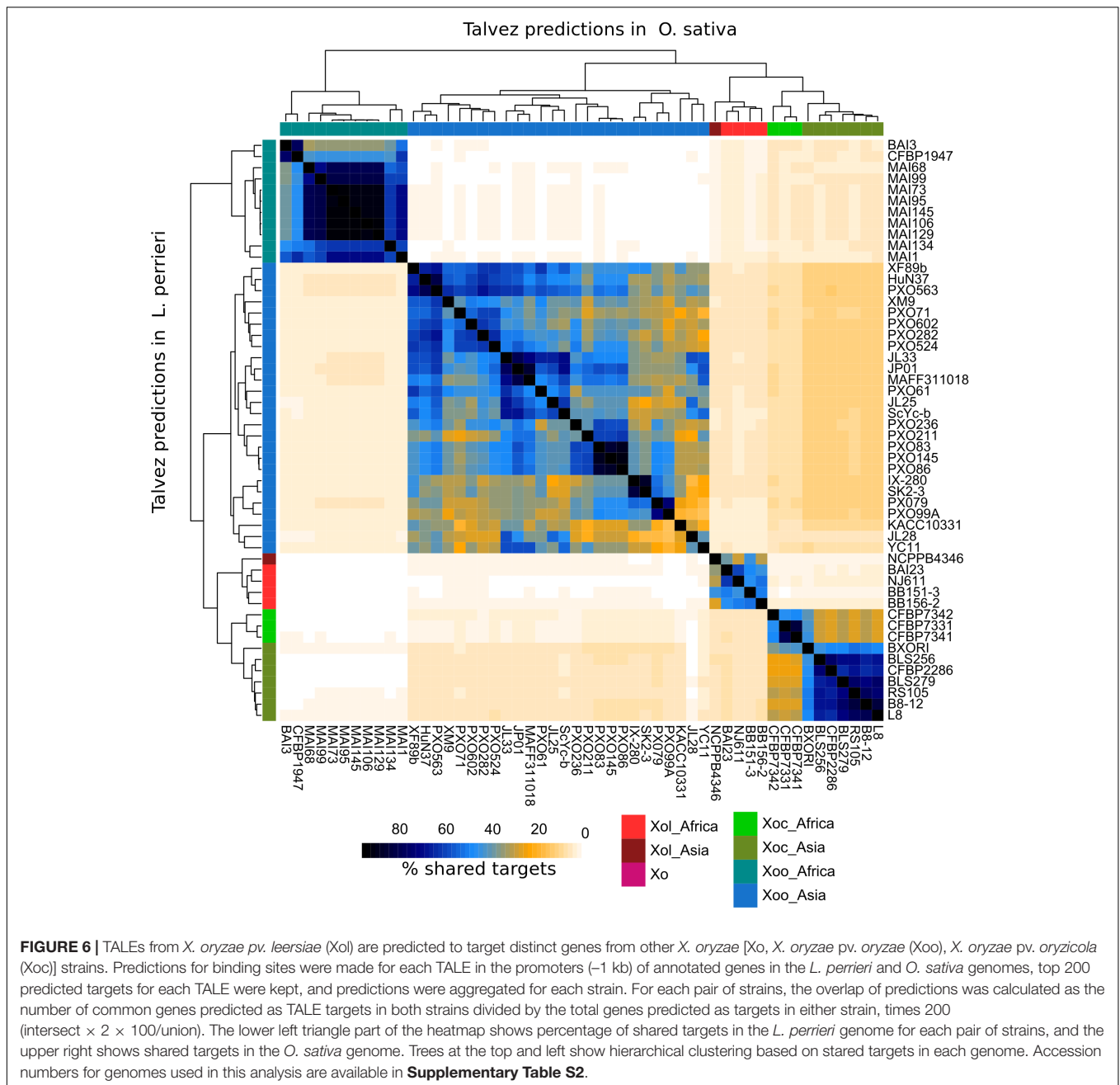
One of the groups contained TALEs from *Xoc* and *Xol* strains, while all the others were exclusive to *Xol*. Of these, seven groups were present in all five *Xol* strains. One of these groups, present in the four African *Xol* strains, contains the RVD combination “T1” which has not been previously reported in other species.

All *Xol* strains contained at least two TALEs that were classified within the same group, that is, within each *Xol* genome there are at least two TALEs with nearly identical repeat arrangements (Figure 5B). By examining pairwise genetic distances between the repeat regions of TALEs, we saw that TALEs from *Xol* are on average more similar to each other than TALEs within other *X. oryzae* groups, indicating that they are possibly less diversified and/or more redundant (Figure 5C).

Xol TALE Targets in Cutgrass and Rice Are Different From *Xoc* and *Xoo* Targets

Talvez (Pérez-Quintero et al., 2013) was used to predict host targets for each TALE in our dataset in the promoters of annotated genes in the *L. perrieri* (v1.4) and *O. sativa* (vMSU7) genomes. We identified ortholog pairs between both genomes using reciprocal BLAST. Comparisons of the predictions between both genomes for *Xol* TALEs revealed very few cases where an ortholog pair was predicted to be a target in both genomes (Supplementary Figure S7), and highlighted that the promoters (and thus the targeted genes) in these two hosts are very different.

We then compared predictions for all *Xol* lineages in both genomes and calculated the overlap between predictions for each



strain. As a result, we saw that each *X. oryzae* group has a distinct group of predicted targets with relatively little overlap with other groups. In the case of *Xol*, the highest overlap was found with predictions for *Xoc* TALEs (10–11% shared predicted targets) (Figure 6). Given the differences in the genomes of their hosts and that *Xol* TALEs have unique repeat sequences, we expect their targets to be likewise unique. Additionally, we looked for orthologs of known susceptibility (*S*) genes targeted by *Xoc* or *Xoo* TALEs (e.g., SWEETs, OsSULTR3;6) and queried whether they were among the top predictions for *Xol* TALEs. No known *Xoc* or *Xoo* target homolog was found. It is, however, possible, that while not targeting the direct orthologs of these *S*

genes, *Xol* TALEs may be inducing similar functions, since the predicted targets contain genes annotated with similar functions to known *S* genes including sulfate transporters, nodulins and various families of transcription factors (Supplementary Table S3). Expression data and further experiments are necessary to effectively identify the biological mechanisms of these TALEs.

DISCUSSION

Xanthomonas oryzae pv. *leersiae*, which has been isolated from the pervasive weed species *L. hexandra* surrounding rice paddies

(Fang et al., 1957; Wonni et al., 2014), was historically grouped as a distinct species and pathovar (Vauterin et al., 1995; Triplett et al., 2011; Wonni et al., 2014). We compared pathogenicity of multiple strains on diverse cereal hosts and complete genomes of five *Xol* strains from Burkina Faso, China, Mali, and Uganda. Similar to *Xoc*, *Xol* strains caused water soaked lesions on rice and *L. hexandra*, but were not virulent to wheat and barley. ANI is a widely accepted baseline beyond DNA–DNA hybridization for taxonomic placement of prokaryotes into a species, not a pathovar, at a threshold of >95–96% (Konstantinidis and Tiedje, 2005; Goris et al., 2007; Richter and Rossello-Mora, 2009; Kim et al., 2014; Bull and Koike, 2015). In phylogenetic analyses, these five *Xol* strains, representing geographic and temporal diversity, grouped more closely with *Xo* pathovars than other members of this genus, and were above a species delineation threshold in ANI analyses. Therefore, we propose re-naming these strains from *Xcl* to *Xol* (Fang et al., 1957) comb. nov.

Xanthomonas oryzae pv. *leersiae* colonize and cause water-soaking on rice leaves, but the southern cutgrass isolates are not as aggressive as *Xo* isolated from rice. The lesions caused by *Xol* were phenotypically similar to rice BLS caused by *Xoc* and these strains did not cause disease when introduced into rice or southern cutgrass by leaf-clipping. Thus, we suggest that *Xol* are not systemic pathogens, and are more like *Xoc* than the systemic relative *Xoo*.

T3Es, as important contributors to bacterial pathogenicity, may define host range, and can also inform lineages and evolutionary relationships among different populations of related bacteria (Arlat et al., 1991; Hajri et al., 2012; Wonni et al., 2014; Schwartz et al., 2015). Studies in *X. oryzae* have shown that different lineages are shaped by T3E repertoires and reflect phenotypic adaptation to their agroecosystems (Hajri et al., 2012; Quibod et al., 2016). Likewise, this study sought to uncover similarities between *Xo* and *Xol* effector repertoires that could further inform their evolutionary lineage. Out of a set of previously defined core effectors for *X. oryzae* [*avrBs2*, *avrBs3* (TALs), *xopL*, *xopN*, *xopP*, *xopQ*, *xopV*, *xopW*, *xopY*, *xopAA*, *xopAB*, *xopAE*, and *xopF1*] (Hajri et al., 2012), *Xol* strains contain all except *xopW*, which is absent in three of the five strains. Although present in strains BAI23 and NJ611, *xopW* contains a large IS. This IS most likely prevented its amplification in previous studies (Wonni et al., 2014). Interestingly, this same IS was identified in other African *Xoc* strains, consistent with a shared evolutionary origin with *Xol* (Hajri et al., 2012). On the other hand, *xopD* is present in *Xol* but absent in other *X. oryzae*. *XopD* is a SUMO protease mimic that suppresses host defense responses during *Xanthomonas euvesicatoria* infection (Kim et al., 2008, 2013). In addition to *Xol*, *xopD* is predicted to be present in *X. campestris* pv. *campestris*, *X. euvesicatoria*, and *Acidovorax citrulli*⁴. Absence in other *Xo* suggests an independent acquisition by *Xol*. Conversely, loss of this effector at some time by *Xoo* or *Xoc* could have occurred, but further validation of these hypotheses is necessary. Since it is not known what level of virulence, and/or host specificity any T3E conveys for *Xol*, future work should include functional validations.

⁴www.xanthomonas.org

We also assessed TALE diversity in *Xol* strains, using genomic assemblies based on long reads generated using SMRT sequencing. While according to phenotyping, phylogenomics, and non-TALE Type III effector repertoires, *Xol* most closely resembles *Xoc*, the *Xol* TALE sequences more closely resemble African *Xoo*. *Xol* and African *Xoo* also possess, on average, smaller TALomes (TALs per genome) than *Xoc* or Asian *Xoo*. Furthermore, their TALs also have less diverse repeat arrangements as evidenced by shorter genetic distances in pairwise TALE repeat alignments. A possible explanation for this feature is that TALs from *Xol* and African *Xoo* more closely resemble the ancestral TALE repertoire for the group and have not undergone the extensive diversification found in *Xoc* and Asian *Xoo*. A hypovirulent strain of *Xoc* was isolated from rice in the Yunnan province of China that also contains nine TALs. This strain was used in heterologous expression assays to determine targets and function of Tal7 (Cai et al., 2017). Unfortunately, the TALome of this strain is unavailable at this time and it is unclear if this strain is related to the *Xol* strains characterized in this study.

The expansion of *Xoc* and *Xoo* TALomes is curious since many of the TALs they carry seem not to be required for virulence and some may even have redundant functions (Pérez-Quintero et al., 2013; Cernadas et al., 2014). Given their repetitive nature and a general tendency toward homogenization of repeats, TALs have been proposed as being selected for evolvability, that is, selected for their ability to quickly recombine (Schandry et al., 2016). Having an expanded TALome would further allow frequent recombination and generation of new TALE variants, as reflected in bigger evolutionary distances between repeat arrangements. This selection of a bigger TALome has been proposed to be driven by extensive breeding for resistance in the host plant (Schandry et al., 2018). When exposed to a resistant host population, a pathogen population can benefit from carrying a heterogeneous and redundant set of effectors, since preexisting isolates harboring a set advantageous for the new conditions would then be selected, in what has been proposed as a type of evolutionary “bet-hedging” strategy (Win et al., 2012). It is then possible that *Xoc* and Asian *Xoo* have historically encountered more resistance, possibly related to domestication of its primary host, than *Xol* and African *Xoo*, leading to a selection for expanded TALomes.

At least two resistance genes (*Xa1* and *Xo1*) in *O. sativa* specifically recognize TALs (Ji et al., 2016; Triplett et al., 2016), and *Xoc* and *Xoo* seem to have benefited from their expanded TALomes by selecting TALE variants (iTALs or truncTALs) that can specifically suppress resistance mediated by these genes (Ji et al., 2016; Read et al., 2016). Meanwhile *Xol* infecting *L. hexandra*, as African *Xoo* originally infecting *Oryza glaberrima* (Gonzalez et al., 2007), may have never encountered similar resistance in its host, and thus lacks these TALE variants and cannot cause disease on varieties carrying *Xol* (Figure 1).

TALome expansion may have been accompanied by, or be a consequence of, higher genome plasticity in the *X. oryzae* clade as evidenced by a high amount of genome and gene duplication and a high frequency of IS elements, these measures being generally lower in *Xol*. Within the clade, differences

may be once more related to resistance in the host, with the more plastic genomes (Asian *Xoo*) matching more variable host populations. The requirement of plastic genomes in the clade as a whole has been hypothesized to be a consequence of rice cultivation through millennia (Salzberg et al., 2008; Bogdanove and Voytas, 2011), and suggest the ancestor of the clade faced an already variable population. Which then raises the question of where *Xol* falls within this scenario of adaptation to a cultivated crop?

Rice and southern cutgrass are closely related members of the *Poaceae*. *Leersia* species are often used as an outgroup in phylogenetic and, most recently, genomic investigations (Copetti et al., 2015). Evidence of genome duplication events and defense response genes shared by rice and *Leersia* species has been reported (Jacquemin et al., 2009; Xiao et al., 2009). It is plausible that based on their genetic and evolutionary relatedness that respective pathogens of *Oryza* and *Leersia* evolved independently. The US strains of *Xo*, which do not contain intact TALEs, could have been progenitors of other *Xo* pathovars, having acquired TALEs over time to enhance virulence on rice or *Leersia* spp. (Triplett et al., 2011). Significant trade between the United States, Africa, and Asia could allow for movement of strains across continents. However, it is not clear if *Xol* is currently present in the United States, despite early reports of *L. hexandra* being an alternate host for *Xoo* (Gonzalez et al., 1991). Alternatively, this system may represent a sympatric scenario where *Xoo*, *Xoc*, *Xo*, and *Xol* all lived in the same habitat, providing the opportunity to exchange genetic material and to adapt to their respective host while maintaining basic homology (Jacques et al., 2016). In this scenario, given its similar infection biology and overall similarities to *Xoc*, *Xol* may be a specialized subgroup originating from a *Xoc*-like population able to colonize southern cutgrass, or vice versa.

How specifically adapted *Xol* strains are to either *L. hexandra* or rice remains a fascinating question, since *Xol* could potentially represent an emerging pathogen for rice. Here we have shown that *Xol* can, to some extent, infect rice, and two of the isolates sequenced in this work were originally recovered from symptomatic rice leaves in a field (BB 151-3 and BB 156-2). To get insights into host adaptation, we attempted to predict targets for *Xol* TALEs in *L. hexandra* using *L. perrieri*, the only available genome from the genus, as proxy and *O. sativa*. Overall, the predictions indicate that *Xol* TALEs induce different sets of genes than other *X. oryzae*, and that different genes are induced in rice and *Leersia* sp. given that relatively few orthologues are predicted as targets in both genomes. Of particular interest, given the phenotypic similarities with *Xoc*, is the predicted targeting of genes annotated as sulfate transporters. Four genes in the *L. perrieri* genome corresponding to orthologs of sulfate transporters from rice (LOC_Os03g09940, LOC_Os03g09970, LOC_Os03g09980, and LOC_Os09g06499) were predicted to be targeted by TALEs from at least one *Xol* strain with high prediction scores (**Supplementary Table S3**). The primary virulence target of Tal2g from *Xoc* is *OsSULTR3;6* which is a member of the sulfate transporter family 3

(Takahashi et al., 2011; Cernadas et al., 2014). It is feasible that the TALEs targeting sulfate transporters in *Leersia* mirror the virulence function of Tal2g. However, transcriptomic data and further biological validation are required since it is still possible that the few-shared genes in the predictions are true targets and similar functions are required for virulence in both hosts.

CONCLUSION

In summary, we propose *Xol*, which was isolated from rice and southern cutgrass (*L. hexandra*), a weedy grass closely related to rice, as a new member of the *X. oryzae* species. Genomic analysis and disease phenotyping on various hosts demonstrated the close relationship of *Xol* to the rice pathogens *Xoo* and *Xoc*. T3E and TALE content of the *Xol* indicated that this group of organisms uses similar virulence mechanisms to the rice pathogens. While weeds such as southern cutgrass are not agronomic crops, they are competitors for resources and potential reservoirs of pathogen inoculum, they are important in management considerations for rice growers. Interfering in any agroecosystem requires comprehensive consideration. Certain *Leersia* sp. are used as banker plants for the critically important rice brown plant hopper (Zheng et al., 2017), therefore integrated management of weeds surrounding rice paddies will require prospecting and balance of all possible pests. The fact that they harbor a pathogen group that can also impact rice emphasizes that, in general, more attention should be focused to the surrounding ecosystem in rice production and more broadly in any crop rotation as a general management strategy. Research contributing toward understanding the *Xol*/rice/southern cutgrass pathosystem will be significant for all rice-producing countries.

AUTHOR CONTRIBUTIONS

JML, AP-Q, RK, BS, VV, and JEL conceived and designed experiments. JML, AP-Q, RK, ED, and JJ performed the experiments. SS, HD, IK, RO, OK, and VV collected and provided new *Xol* strains. JML, AP-Q, RK, and JZ analyzed the data. RK, RO, OK, BS, VV, and JEL provided resources and supervision. JML, AP-Q, BS, VV, and JEL developed the manuscript.

FUNDING

This research was supported by a Marie Curie IOF Fellowship (EU Grant PEOF-GA-2009-235457 to VV); the Embassy of France in the United States, Office of Science and Technology – STEM Chateaubriand Fellowship Program (to JML); USDA NIFA Postdoctoral Fellowship Award No. 2016-04706 (to JJ); USDA's National Institute of Food and Agriculture, award # 2018-67013-28490 (to JJ, JML, and JEL); and by IRD JEAI Coana (to SS and OK).

ACKNOWLEDGMENTS

We are grateful to Dr. Geoffrey Onaga for strain collection in Uganda; Dr. Bing Yang for *Xol* BB 151-3 and BB 156-2 genome sequence; and Emily Luna for technical support. We thank Drs. Mathilde Hutin, Céline Pesce, Sébastien Cunnac, and Tuan T. Tran for seed, constructive discussions, and technical support and Dr. Young-Ki Jo for providing *Leersia hexandra*. This article is based upon work from COST Action CA16107

EuroXanth, supported by COST (European Cooperation in Science and Technology).

SUPPLEMENTARY MATERIAL

The Supplementary Material for this article can be found online at: <https://www.frontiersin.org/articles/10.3389/fpls.2019.00507/full#supplementary-material>

REFERENCES

- Arlat, M., Gough, C., Barber, C., Boucher, C., and Daniels, M. (1991). *Xanthomonas campestris* contains a cluster of hrp genes related to larger hrp cluster of *Pseudomonas solanacearum*. *Mol. Plant Microbe Interact.* 4, 593–601. doi: 10.1094/MPMI-4-593
- Ash, G. J., Lang, J. M., Triplett, L. R., Stodart, B. J., Verdier, V., Cruz, C. V., et al. (2014). Development of a genomics-based LAMP (Loop-mediated isothermal amplification) assay for detection of *Pseudomonas fuscovaginae* from rice. *Plant Dis.* 98, 909–915. doi: 10.1094/PDIS-09-13-0957-RE
- Boch, J., Bonas, U., and Lahaye, T. (2014). TAL effectors - pathogen strategies and plant resistance engineering. *New Phytol.* 204, 823–832. doi: 10.1111/nph.13015
- Boch, J., Scholze, H., Schornack, S., Landgraf, A., Hahn, S., Kay, S., et al. (2009). Breaking the code of DNA binding specificity of TAL-type III effectors. *Science* 326, 1509–1512. doi: 10.1126/science.1178811
- Bogdanove, A. J., and Voytas, D. F. (2011). TAL effectors: customizable proteins for DNA targeting. *Science* 333, 1843–1846. doi: 10.1126/science.1204094
- Booher, N. J., and Bogdanove, A. J. (2014). Tools for TAL effector design and target prediction. *Methods* 69, 121–127. doi: 10.1016/j.ymeth.2014.06.006
- Booher, N. J., Carpenter, S. C. D., Sebra, R. P., Wang, L., Salzberg, S. L., Leach, J. E., et al. (2015). Single molecule real-time sequencing of *Xanthomonas oryzae* genomes reveals a dynamic structure and complex TAL (transcription activator-like) effector gene relationships. *Microb. Genomics* 1:e000032. doi: 10.1099/mgen.0.000032
- Boratyn, G. M., Camacho, C., Cooper, P. S., Coulouris, G., Fong, A., Ma, N., et al. (2013). BLAST: a more efficient report with usability improvements. *Nucleic Acids Res.* 41, W29–W33. doi: 10.1093/nar/gkt282
- Bull, C. T., and Koike, S. T. (2015). Practical benefits of knowing the enemy: modern molecular tools for diagnosing the etiology of bacterial diseases and understanding the taxonomy and diversity of plant-pathogenic bacteria. *Annu. Rev. Phytopathol.* 53, 157–180. doi: 10.1146/annurev-phyto-080614-120122
- Cai, L., Cao, Y., Xu, Z., Ma, W., Zakria, M., Zou, L., et al. (2017). A transcription activator-like effector Tal7 of *Xanthomonas oryzae* pv. *oryzicola* activates rice gene Os09g29100 to suppress rice immunity. *Sci. Rep.* 7:5089. doi: 10.1038/s41598-017-04800-8
- Cernadas, R. A., Doyle, E. L., Niño-Liu, D. O., Wilkins, K. E., Bancroft, T., Wang, L., et al. (2014). Code-assisted discovery of TAL effector targets in bacterial leaf streak of rice reveals contrast with bacterial blight and a novel susceptibility gene. *PLoS Pathog.* 10:e1003972. doi: 10.1371/journal.ppat.1003972
- Copetti, D. (2013). “Genomic resources for *Leersia perrieri*: an outgroup species for the genus *Oryza*,” in *Proceedings of the Plant and Animal Genome VIII (Plant and Animal Genome)*, (San Diego, CA).
- Copetti, D., Zhang, J., El Baidouri, M., Gao, D., Wang, J., Barghini, E., et al. (2015). RiTE database: a resource database for genus-wide rice genomics and evolutionary biology. *BMC Genomics* 16:538. doi: 10.1186/s12864-015-1762-3
- dos Santos, R. S., Farias, D., da, R., Pegoraro, C., Rombaldi, C. V., Fukao, T., et al. (2017). Evolutionary analysis of the SUB1 locus across the *Oryza* genomes. *Rice* 10:4. doi: 10.1186/s12284-016-0140-3
- Doucouré, H., Pérez-Quintero, A. L., Reshetnyak, G., Tekete, C., Auguy, F., Thomas, E., et al. (2018). Functional and genome sequence-driven characterization of TAL effector gene repertoires reveals novel variants with altered specificities in closely related Malian *Xanthomonas oryzae* pv. *oryzae* strains. *Front. Microbiol.* 9:1657. doi: 10.3389/fmicb.2018.01657
- Doyle, E. L., Booher, N. J., Standage, D. S., Voytas, D. F., Brendel, V. P., VanDyk, J. K., et al. (2012). TAL Effector-Nucleotide Targeter (TALE-NT) 2.0: tools for TAL effector design and target prediction. *Nucleic Acids Res.* 40, W117–W122. doi: 10.1093/nar/gks608
- Edgar, R. C. (2004). MUSCLE: multiple sequence alignment with high accuracy and high throughput. *Nucleic Acids Res.* 32, 1792–1797. doi: 10.1093/nar/gkh340
- Eid, J., Fehr, A., Gray, J., Luong, K., Lyle, J., Otto, G., et al. (2009). Real-time DNA sequencing from single polymerase molecules. *Science* 323, 133–138. doi: 10.1126/science.1162986
- Emms, D. M., and Kelly, S. (2015). OrthoFinder: solving fundamental biases in whole genome comparisons dramatically improves orthogroup inference accuracy. *Genome Biol.* 16:157. doi: 10.1186/s13059-015-0721-2
- Fang, C. T., Ren, H. C., Chen, T. K., Chu, Y. K., Faan, H. C., and Wu, S. C. (1957). A comparison of rice bacterial leaf blight organism with the bacterial leaf streak organism of rice and *Leersia hexandra* Swartz. *Acta Phytopathol. Sin.* 3, 99–124.
- Gardner, S. N., Slezak, T., and Hall, B. G. (2015). kSNP3.0: SNP detection and phylogenetic analysis of genomes without genome alignment or reference genome. *Bioinformatics* 31, 2877–2878. doi: 10.1093/bioinformatics/btv271
- Gonzalez, C., Szurek, B., Manceau, C., Mathieu, T., Sere, Y., and Verdier, V. (2007). Molecular and pathotypic characterization of new *Xanthomonas oryzae* strains from West Africa. *Mol. Plant Microbe Interact.* 20, 534–546. doi: 10.1094/MPMI-20-5-0534
- Gonzalez, C., Xu, G., Li, H., and Cosper, J. W. (1991). *Leersia hexandra*, an alternate host for *Xanthomonas campestris* pv. *oryzae* in Texas. *Plant Dis.* 75, 159–162. doi: 10.1094/PD-75-0159
- Goris, J., Konstantinidis, K. T., Klappenbach, J. A., Coenye, T., Vandamme, P., and Tiedje, J. M. (2007). DNA-DNA hybridization values and their relationship to whole-genome sequence similarities. *Int. J. Syst. Evol. Microbiol.* 57, 81–91. doi: 10.1099/ijs.0.64483-0
- Grau, J., Reschke, M., Erkes, A., Streubel, J., Morgan, R. D., Wilson, G. G., et al. (2016). AnnoTALE: bioinformatics tools for identification, annotation, and nomenclature of TALEs from *Xanthomonas* genomic sequences. *Sci. Rep.* 6:21077. doi: 10.1038/srep21077
- Grau, J., Wolf, A., Reschke, M., Bonas, U., Posch, S., and Boch, J. (2013). Computational predictions provide insights into the biology of TAL effector target sites. *PLoS Comput. Biol.* 9:e1002962. doi: 10.1371/journal.pcbi.1002962
- Guo, Y.-L., and Ge, S. (2005). Molecular phylogeny of *Oryzae* (*Poaceae*) based on DNA sequences from chloroplast, mitochondrial, and nuclear genomes. *Am. J. Bot.* 92, 1548–1558. doi: 10.3732/ajb.92.9.1548
- Haas, B. J., Delcher, A. L., Wortman, J. R., and Salzberg, S. L. (2004). DAGchainer: a tool for mining segmental genome duplications and synteny. *Bioinformatics* 20, 3643–3646. doi: 10.1093/bioinformatics/bth397
- Hajri, A., Brin, C., Zhao, S., David, P., Feng, J., Koebnik, R., et al. (2012). Multilocus sequence analysis and type III effector repertoire mining provide new insights into the evolutionary history and virulence of *Xanthomonas oryzae*. *Mol. Plant Pathol.* 13, 288–302. doi: 10.1111/j.1364-3703.2011.00745.x
- Hoagland, D. R., and Arnon, D. I. (1950). *The Water-Culture Method for Growing Plants Without Soil*. Berkeley, CA: University of California.
- Hunt, M., Silva, N., De Otto, T. D., Parkhill, J., Keane, J. A., and Harris, S. R. (2015). Circlator: automated circularization of genome assemblies using long sequencing reads. *Genome Biol.* 16:294. doi: 10.1186/s13059-015-0849-0
- Hutin, M., Pérez-Quintero, A. L., Lopez, C., and Szurek, B. (2015). MorTAL KomBAT: the story of defense against TAL effectors through loss-of-susceptibility. *Front. Plant Sci.* 6:535. doi: 10.3389/fpls.2015.00535
- Jacquemin, J., Laudié, M., and Cooke, R. (2009). A recent duplication revisited: phylogenetic analysis reveals an ancestral duplication highly-conserved

- throughout the *Oryza* genus and beyond. *BMC Plant Biol.* 9:146. doi: 10.1186/1471-2229-9-146
- Jacques, M.-A., Arlat, M., Boulanger, A., Boureau, T., Carrère, S., Cesbron, S., et al. (2016). Using ecology, physiology, and genomics to understand host specificity in *Xanthomonas*. *Annu. Rev. Phytopathol.* 54, 163–187. doi: 10.1146/annurev-phyto-080615-100147
- Ji, Z., Ji, C., Liu, B., Zou, L., Chen, G., Yang, B., et al. (2016). Interfering TAL effectors of *Xanthomonas oryzae* neutralize R-gene-mediated plant disease resistance. *Nat. Commun.* 7:13435. doi: 10.1038/ncomms13435
- Juanillas, V. M. J., Dereeper, A., Beaume, N., Droc, G., Dizon, J., Mendoza, J. R., et al. (2018). Rice galaxy: an open resource for plant science. *bioRxiv* [Preprint]. doi: 10.1101/358754
- Kauffman, H. E., Reddy, A. P. K., Hsieh, S. P. Y., and Merca, S. D. (1973). Improved technique for evaluating resistance of rice varieties to *Xanthomonas oryzae*. *Plant Dis. Rep.* 57, 537–541.
- Kim, J.-G., Stork, W., and Mudgett, M. B. (2013). *Xanthomonas* type III effector XopD desumoylates tomato transcription factor SlERF4 to suppress ethylene responses and promote pathogen growth. *Cell Host Microbe* 13, 143–154. doi: 10.1016/j.chom.2013.01.006
- Kim, J.-G., Taylor, K. W., Hotson, A., Keegan, M., Schmelz, E. A., and Mudgett, M. B. (2008). XopD SUMO protease affects host transcription, promotes pathogen growth, and delays symptom development in *Xanthomonas*-infected tomato leaves. *Plant Cell* 20, 1915–1929. doi: 10.1105/tpc.108.058529
- Kim, M., Oh, H.-S., Park, S.-C., and Chun, J. (2014). Towards a taxonomic coherence between average nucleotide identity and 16S rRNA gene sequence similarity for species demarcation of prokaryotes. *Int. J. Syst. Evol. Microbiol.* 64, 346–351. doi: 10.1099/ijls.0.059774-0
- Konstantinidis, K. T., and Tiedje, J. M. (2005). Genomic insights that advance the species definition for prokaryotes. *Proc. Natl. Acad. Sci. U.S.A.* 102, 2567–2572. doi: 10.1073/pnas.0409727102
- Krumsiek, J., Arnold, R., and Rattei, T. (2007). Gepard: a rapid and sensitive tool for creating dotplots on genome scale. *Bioinformatics* 23, 1026–1028. doi: 10.1093/bioinformatics/btm039
- Lang, J. M., DuCharme, E., Ibarra Caballero, J., Luna, E., Hartman, T., Ortiz-Castro, M., et al. (2017). Detection and characterization of *Xanthomonas vasicola* pv. *vasculorum* (Cobb 1894) comb. nov. causing bacterial leaf streak of corn in the United States. *Phytopathology* 107, 1312–1321. doi: 10.1094/PHYTO-05-17-0168-R
- Lang, J. M., Hamilton, J. P., Diaz, M. G. Q., Van Sluys, M. A., Burgos, M. R. G., Vera Cruz, C. M., et al. (2010). Genomics-based diagnostic marker development for *Xanthomonas oryzae* pv. *oryzae* and *X. oryzae* pv. *oryzicola*. *Plant Dis.* 94, 311–319. doi: 10.1094/pdis-94-3-0311
- Lang, J. M., Langlois, P., Nguyen, M. H. R., Triplett, L. R., Purdie, L., Holton, T. A., et al. (2014). Sensitive detection of *Xanthomonas oryzae* pathovars *oryzae* and *oryzicola* by loop-mediated isothermal amplification. *Appl. Environ. Microbiol.* 80, 4519–4530. doi: 10.1128/AEM.00274-14
- Li, H. (2016). Minimap and miniasm: fast mapping and de novo assembly for noisy long sequences. *Bioinformatics* 32, 2103–2110. doi: 10.1093/bioinformatics/btw152
- Liu, J., Duan, C., Zhang, X., Zhu, Y., and Lu, X. (2011). Potential of *Leersia hexandra* Swartz for phytoextraction of Cr from soil. *J. Hazard. Mater.* 188, 85–91. doi: 10.1016/j.jhazmat.2011.01.066
- Mew, T. W. (1987). Current status and future prospects of research on bacterial blight of rice. *Annu. Rev. Phytopathol.* 25, 359–382. doi: 10.1146/annurev.py.25.090187.002043
- Moscou, M. J., and Bogdanove, A. J. (2009). A simple cipher governs DNA recognition by TAL effectors. *Science* 326:1501. doi: 10.1126/science.1178817
- Noda, T., and Yamamoto, T. (2008). Reaction of *Leersia* grasses to *Xanthomonas oryzae* pv. *oryzae* collected from Japan and Asian countries. *J. Gen. Plant Pathol.* 74, 395–401. doi: 10.1007/s10327-008-0118-0
- Notomi, T., Okayama, H., Masubuchi, H., Yonekawa, T., Watanabe, K., Amino, N., et al. (2000). Loop-mediated isothermal amplification of DNA. *Nucleic Acids Res.* 28:e63. doi: 10.1093/nar/28.12.e63
- Ou, S. H. (1985). *Rice Diseases*, 2nd Edn. Surrey: Association Applied Biology.
- Paradis, E., Claude, J., and Strimmer, K. (2004). APE: analyses of phylogenetics and evolution in R language. *Bioinformatics* 20, 289–290. doi: 10.1093/bioinformatics/btg412
- Parkinson, N., Cowie, C., Heeney, J., and Stead, D. (2009). Phylogenetic structure of *Xanthomonas* determined by comparison of gyrB sequences. *Int. J. Syst. Evol. Microbiol.* 59, 264–274. doi: 10.1099/ijls.0.65825-0
- Peng, Z., Hu, Y., Xie, J., Potnis, N., Akhunova, A., Jones, J., et al. (2016). Long read and single molecule DNA sequencing simplifies genome assembly and TAL effector gene analysis of *Xanthomonas translucens*. *BMC Genomics* 17:21. doi: 10.1186/s12864-015-2348-9
- Pérez-Quintero, A. L., Lamy, L., Gordon, J., Escalon, A., Cunnac, S., Szurek, B., et al. (2015). QueTAL: a suite of tools to classify and compare TAL effectors functionally and phylogenetically. *Front. Plant Sci.* 6:545. doi: 10.3389/fpls.2015.00545
- Pérez-Quintero, A. L., Rodríguez-R, L. M., Dereeper, A., López, C., Koebnik, R., Szurek, B., et al. (2013). An improved method for TAL effectors DNA-binding sites prediction reveals functional convergence in TAL repertoires of *Xanthomonas oryzae* strains. *PLoS One* 8:e68464. doi: 10.1371/journal.pone.0068464
- Poulin, L., Grygiel, P., Magne, M., Gagnevin, L., Rodríguez-R, L. M., Forero Serna, N., et al. (2015). New multilocus variable-number tandem-repeat analysis tool for surveillance and local epidemiology of bacterial leaf blight and bacterial leaf streak of rice caused by *Xanthomonas oryzae*. *Appl. Environ. Microbiol.* 81, 688–698. doi: 10.1128/AEM.02768-14
- Quibod, I. L., Perez-Quintero, A., Booher, N. J., Dossa, G. S., Grande, G., Szurek, B., et al. (2016). Effector diversification contributes to *Xanthomonas oryzae* pv. *oryzae* phenotypic adaptation in a semi-isolated environment. *Sci. Rep.* 6:34137. doi: 10.1038/srep34137
- Read, A. C., Rinaldi, F. C., Hutin, M., He, Y., Triplett, L. R., and Bogdanove, A. J. (2016). Suppression of Xo1-mediated disease resistance in rice by a truncated, non-DNA-binding TAL effector of *Xanthomonas oryzae*. *Front. Plant Sci.* 7:1516. doi: 10.3389/fpls.2016.01516
- Reimers, P. J., and Leach, J. E. (1991). Race-specific resistance to *Xanthomonas oryzae* pv. *oryzae* conferred by bacterial blight resistance gene *Xa-10* in rice *Oryza sativa* involves accumulation of a lignin-like substance in host tissues. *Physiol. Mol. Plant Pathol.* 38, 39–55. doi: 10.1016/S0885-5765(05)80141-9
- Richter, M., and Rossello-Mora, R. (2009). Shifting the genomic gold standard for the prokaryotic species definition. *Proc. Natl. Acad. Sci. U.S.A.* 106, 19126–19131. doi: 10.1073/pnas.0906412106
- Rodríguez-R, L. M., and Konstantinidis, K. T. (2016). The enveomics collection: a toolbox for specialized analyses of microbial genomes and metagenomes. *Peer J. Prepr.* 4:e1900v1. doi: 10.7287/peerj.preprints.1900v1
- Ryba-White, M., Notteghem, J. L., and Leach, J. E. (1995). Comparison of *Xanthomonas oryzae* pv. *oryzae* strains from Africa, North America, and Asia by restriction fragment length polymorphism analysis. *Int. Rice Res. Newsl.* 20, 25–26.
- Salzberg, S. L., Sommer, D. D., Schatz, M. C., Phillippy, A. M., Rabinowicz, P. D., Tsuge, S., et al. (2008). Genome sequence and rapid evolution of the rice pathogen *Xanthomonas oryzae* pv. *oryzae* PXO99A. *BMC Genomics* 9:204. doi: 10.1186/1471-2164-9-204
- Schandry, N., de Lange, O., Prior, P., and Lahaye, T. (2016). TALE-like effectors are an ancestral feature of the *Ralstonia solanacearum* species complex and converge in DNA Targeting Specificity. *Front. Plant Sci.* 7:1225. doi: 10.3389/fpls.2016.01225
- Schandry, N., Jacobs, J. M., Szurek, B., and Perez-Quintero, A. L. (2018). A cautionary TALE: how plant breeding may have favoured expanded TALE repertoires in *Xanthomonas*. *Mol. Plant Pathol.* 19, 1297–1301. doi: 10.1111/mpp.12670
- Schliep, K. P. (2011). phangorn: phylogenetic analysis in R. *Bioinformatics* 27, 592–593. doi: 10.1093/bioinformatics/btq706
- Schwartz, A. R., Potnis, N., Timilsina, S., Wilson, M., Patané, J., Martins, J., et al. (2015). Phylogenomics of *Xanthomonas* field strains infecting pepper and tomato reveals diversity in effector repertoires and identifies determinants of host specificity. *Front. Microbiol.* 6:535. doi: 10.3389/fmicb.2015.00535
- Seemann, T. (2014). Prokka: rapid prokaryotic genome annotation. *Bioinformatics* 30, 2068–2069. doi: 10.1093/bioinformatics/btu153
- Takahashi, H., Buchner, P., Yoshimoto, N., Hawkesford, M. J., and Shiu, S.-H. (2011). Evolutionary relationships and functional diversity of plant sulfate transporters. *Front. Plant Sci.* 2:119. doi: 10.3389/fpls.2011.00119
- Tran, T. T., Pérez-Quintero, A. L., Wonni, I., Carpenter, S. C. D., Yu, Y., Wang, L., et al. (2018). Functional analysis of African *Xanthomonas oryzae* pv. *oryzae*

- TALomes reveals a new susceptibility gene in bacterial leaf blight of rice. *PLoS Pathog.* 14:e1007092. doi: 10.1371/journal.ppat.1007092
- Triplett, L., and Leach, J. (2016). Host mechanisms for resistance to TAL effectors: thinking outside the UPT box. *Physiol. Mol. Plant Pathol.* 95, 66–69. doi: 10.1016/j.pmp.2016.02.002
- Triplett, L. R., Cohen, S. P., Heffelfinger, C., Schmidt, C. L., Huerta, A. I., Tekete, C., et al. (2016). A resistance locus in the American heirloom rice variety Carolina Gold Select is triggered by TAL effectors with diverse predicted targets and is effective against African strains of *Xanthomonas oryzae* pv. *oryzicola*. *Plant J.* 87, 472–483. doi: 10.1111/tpj.13212
- Triplett, L. R., Hamilton, J. P., Buell, C. R., Tisserat, N. A., Verdier, V., Zink, F., et al. (2011). Genomic analysis of *Xanthomonas oryzae* isolates from rice grown in the United States reveals substantial divergence from known *X. oryzae* pathogens. *Appl. Environ. Microbiol.* 77, 3930–3937. doi: 10.1128/AEM.00028-11
- Vauterin, L., Hoste, B., Kersters, K., and Swings, J. (1995). Reclassification of *Xanthomonas*. *Int. J. Syst. Bacteriol.* 45, 472–489. doi: 10.1099/00207713-45-3-472
- Verdier, V., Triplett, L. R., Hummel, A. W., Corral, R., Cernadas, R. A., Schmidt, C. L., et al. (2012). Transcription activator-like (TAL) effectors targeting OsSWEET genes enhance virulence on diverse rice (*Oryza sativa*) varieties when expressed individually in a TAL effector-deficient strain of *Xanthomonas oryzae*. *New Phytol.* 196, 1197–1207. doi: 10.1111/j.1469-8137.2012.04367.x
- Wang, D., Zhang, X., Liu, J., Zhu, Y., Zhang, H., Zhang, A., et al. (2012). Oxalic acid enhances Cr tolerance in the accumulating plant *Leersia hexandra* Swartz. *Int. J. Phytoremediation* 14, 966–977. doi: 10.1080/15226514.2011.636406
- White, F. F., Potnis, N., Jones, J. B., and Koebnik, R. (2009). The type III effectors of *Xanthomonas*. *Mol. Plant Pathol.* 10, 749–766. doi: 10.1111/j.1364-3703.2009.00590.x
- Wilkins, K. E., Booher, N. J., Wang, L., and Bogdanove, A. J. (2015). TAL effectors and activation of predicted host targets distinguish Asian from African strains of the rice pathogen *Xanthomonas oryzae* pv. *oryzicola* while strict conservation suggests universal importance of five TAL effectors. *Front. Plant Sci.* 6:536. doi: 10.3389/fpls.2015.00536
- Win, J., Chaparro-Garcia, A., Belhaj, K., Saunders, D. G. O., Yoshida, K., Dong, S., et al. (2012). Effector biology of plant-associated organisms: concepts and perspectives. *Cold Spring Harb. Symp. Quant. Biol.* 77, 235–247. doi: 10.1101/sqb.2012.77.015933
- Wonni, I., Cottyn, B., Detemmerman, L., Dao, S., Ouedraogo, L., Sarra, S., et al. (2014). Analysis of *Xanthomonas oryzae* pv. *oryzicola* population in Mali and Burkina Faso reveals a high level of genetic and pathogenic diversity. *Phytopathology* 104, 520–531. doi: 10.1094/PHYTO-07-13-0213-R
- Wu, M., and Scott, A. J. (2012). Phylogenomic analysis of bacterial and archaeal sequences with AMPHORA2. *Bioinformatics* 28, 1033–1034. doi: 10.1093/bioinformatics/bts079
- Xiao, W., Liu, H., Li, Y., Li, X., Xu, C., Long, M., et al. (2009). A rice gene of de novo origin negatively regulates pathogen-induced defense response. *PLoS One* 4:e4603. doi: 10.1371/journal.pone.0004603
- Xie, Z., and Tang, H. (2017). ISEScan: automated identification of insertion sequence elements in prokaryotic genomes. *Bioinformatics* 33, 3340–3347. doi: 10.1093/bioinformatics/btx433
- Yang, J., Zhang, Y., Yuan, P., Zhou, Y., Cai, C., Ren, Q., et al. (2014). Complete decoding of TAL effectors for DNA recognition. *Cell Res.* 24, 628–631. doi: 10.1038/cr.2014.19
- You, S.-H., Zhang, X.-H., Liu, J., Zhu, Y.-N., and Gu, C. (2013). Feasibility of constructed wetland planted with *Leersia hexandra* Swartz for removing Cr, Cu and Ni from electroplating wastewater. *Environ. Technol.* 35, 187–194. doi: 10.1080/09593330.2013.822006
- Zhao, S., Poulin, L., Rodriguez, R. L., Serna, N. F., Liu, S. Y., Wonni, I., et al. (2012). Development of a variable number of tandem repeats typing scheme for the bacterial rice pathogen *Xanthomonas oryzae* pv. *oryzicola*. *Phytopathology* 102, 948–956. doi: 10.1094/PHYTO-04-12-0078-R
- Zheng, X., Lu, Y., Zhu, P., Zhang, F., Tian, J., Xu, H., et al. (2017). Use of banker plant system for sustainable management of the most important insect pest in rice fields in China. *Sci. Rep.* 7:45581. doi: 10.1038/srep45581

Conflict of Interest Statement: The authors declare that the research was conducted in the absence of any commercial or financial relationships that could be construed as a potential conflict of interest.

Copyright © 2019 Lang, Pérez-Quintero, Koebnik, DuCharme, Sarra, Doucoure, Keita, Ziegler, Jacobs, Oliva, Koita, Szurek, Verdier and Leach. This is an open-access article distributed under the terms of the Creative Commons Attribution License (CC BY). The use, distribution or reproduction in other forums is permitted, provided the original author(s) and the copyright owner(s) are credited and that the original publication in this journal is cited, in accordance with accepted academic practice. No use, distribution or reproduction is permitted which does not comply with these terms.