



HAL
open science

First insights on the diversity of the genus *Psychoda* Latreille (Diptera: Psychodidae) in Corsica using DNA barcoding

Marc Gibernau, Jérôme Albre

► **To cite this version:**

Marc Gibernau, Jérôme Albre. First insights on the diversity of the genus *Psychoda* Latreille (Diptera: Psychodidae) in Corsica using DNA barcoding. *Annales de la Société Entomologique de France*, In press, 10.1080/00379271.2022.2037461 . hal-03619508

HAL Id: hal-03619508

<https://hal.science/hal-03619508>

Submitted on 25 Mar 2022

HAL is a multi-disciplinary open access archive for the deposit and dissemination of scientific research documents, whether they are published or not. The documents may come from teaching and research institutions in France or abroad, or from public or private research centers.

L'archive ouverte pluridisciplinaire **HAL**, est destinée au dépôt et à la diffusion de documents scientifiques de niveau recherche, publiés ou non, émanant des établissements d'enseignement et de recherche français ou étrangers, des laboratoires publics ou privés.

1 **First insights on the diversity of the genus *Psychoda* Latreille (Diptera:**
2 **Psychodidae) in Corsica using DNA barcoding[†]**

3
4 Marc Gibernau* & Jérôme Albre

5
6 CNRS-University of Corsica Pascal Paoli, UMR 6134 SPE, Equipe Chimie et Biomasse, Route
7 des Sanguinaires, 20000 Ajaccio, France.

8
9 *Corresponding author: E-mail: gibernau_m@univ-corse.fr

10
11 **Summary.** Among the 44 European *Psychoda* species identified to date, we expected to observe
12 in Corsica species with large distribution ranges and/or frequent in adjacent territories (i.e. South
13 mainland France, mainland Italy, and Sardinia). Each studied specimen was morphologically
14 identified and then barcoded using cytochrome c oxidase subunit I (COI) and subunit II (COII) to
15 confirm its identification, and to detect potential cryptic species. From 211 mounted specimens, 16
16 *Psychoda sensu lato* morphotypes were recorded in Corsica and mainland France. While 14 out of
17 the 15 species recorded in Corsica are new records for the island, two species are also new records
18 for France and Europe, *P. (Psychodocha) uncinula* Quate, 1954 and *P. (Chodopsycha) divaricata*
19 Duckhouse, 1968. Moreover, our barcoding approach allowed us to detect 18 haplotypes in total,
20 including three undescribed Corsican haplotype complexes, namely *P. (Tinearia) alternata*, *P.*
21 *(Logima) satchelli* and *P. (Psychodocha) cinerea*. With only mitochondrial COI barcodes, it cannot
22 be asserted whether these complexes represent the within-species coexistence of various
23 haplotypes or the existence of distinct cryptic species. In BOLD (Barcode of Life Datasystems),

24 only 30 out of the 58 BINs corresponding to the genus *Psychoda* have a species name. All of the
25 COI barcodes generated in this study already exist in BOLD, suggesting that the barcodes of most
26 of the temperate *Psychoda* diversity are already known, but not properly named.

27
28 **Résumé. Premières données sur la diversité du genre *Psychoda* Latreille (Diptera :**
29 **Psychodidae) en Corse incluant les codes-barres ADN.** Parmi les 44 espèces européennes
30 actuelles de *Psychoda*, nous nous attendions à récolter en Corse des espèces à large aire de
31 distribution et/ou fréquentes dans les territoires adjacents (i.e. sud de la France, Italie continentale
32 et Sardaigne). Chaque spécimen étudié a été identifié morphologiquement et génétiquement à partir
33 des séquences du cytochrome C oxydase sous-unité I (COI) et sous-unité II (COII) afin de détecter
34 des espèces cryptiques potentielles. Un total de 211 spécimens a été examiné, représentant 16
35 morphotypes de *Psychoda sensu lato* de Corse et de France continentale. Ainsi, 14 des 15 espèces
36 trouvées en Corse sont nouvelles pour l'île et deux le sont pour la France et l'Europe, *P.*
37 (*Psychodocha*) *uncinula* Quate, 1954 et *P. (Chodopsycha) divaricata* Duckhouse, 1968. De plus,
38 le séquençage des codes-barres ADN a permis de détecter un total de 18 haplotypes dont trois
39 complexes génétiques : *P. (Tinearia) alternata*, *P. (Logima) satchelli* et *P. (Psychodocha) cinerea*.
40 À partir des seuls codes-barres mitochondriaux du COI, il est difficile de trancher si ces complexes
41 représentent la coexistence de différents haplotypes ou l'existence d'espèces cryptiques distinctes.
42 Sur BOLD (Barcode of Life Datasystems), seulement 30 des 58 BINs correspondant au genre
43 *Psychoda* ont un nom d'espèce attribué. Toutes les séquences de COI obtenues dans cette étude
44 sont déjà présentes dans la base de données BOLD suggérant que la majorité des *Psychoda*
45 tempérés a été séquencée mais pas proprement identifiée.

46

47 **Keywords:** cryptic species, haplotypes, *Psychoda sensu lato*, species complex

48

49 †This manuscript is dedicated to the memory of Phil(ip) Withers, a notable contributor to
50 Psychodidae who died on July 5th 2020.

51

52 The genus *Psychoda* Latreille, 1796, the first described for Psychodidae, was properly delimited
53 by Quate (1959), the first author to provide its diagnosis. The taxonomic definition of *Psychoda*
54 has been extensively debated after Quate's work as discussed in Bravo et al. (2006), and is still
55 controversial as it has been split between two (Vaillant 1972) and 13 intimately related genera
56 (Ježek 1984, 2007; Ježek & van Harten 1996, 2005). In this work, we follow the definition of
57 *Psychoda sensu lato* given by Bravo et al. (2006), considering the 13 described genera as subgenera
58 of the genus *Psychoda*: subgenera *Psychoda* Latreille, 1796, *Tinearia* Schellenberg, 1803, *Logima*
59 Eaton, 1904, *Copropsychoda* Vaillant, 1971, *Chodopsycha* Ježek, 1984, *Psycha* Ježek, 1984,
60 *Psychodocha* Ježek, 1984, *Psychodula* Ježek, 1984, *Psychomora* Ježek, 1984, *Ypsydocha* Ježek,
61 1984, *Falsologima* Ježek & Harten, 1996, *Psychana* Ježek & Harten, 2005 and *Apsycha* Ježek,
62 2007.

63

64 Despite the taxonomic definition difficulty, new regional or national species lists are still regularly
65 published, updating the distribution areas of known species and/or describing new species (Ježek
66 2004; Ježek & Yağci 2005; Salmela et al. 2007; Kvifte & Boumans 2014; Kroča & Ježek 2015;
67 Kvifte et al. 2016; Ježek et al. 2018a, 2018b, 2018c; Kroča & Ježek 2019; Kvifte 2019). However,
68 the *Psychoda* diversity remains unclear in many European regions, such as the island of Corsica.
69 According to *Fauna Europaea* (Wagner 2013), the genus *Psychoda s. l.* is composed in Europe of
70 43 species (40 *Psychoda* and three *Tinearia*), plus *P. cultella* Salmela, Kvifte & More, 2012 not

71 yet listed (Salmela et al. 2012). When considering regions surrounding Corsica (Table 1), mainland
72 of France and Italy have a *Psychoda s. l.* diversity of 23 to 24 species (Dahl et al. 1995; Wagner
73 2013; GBIF, <https://www.gbif.org/>; INPN, <https://inpn.mnhn.fr/accueil/index>; both databases
74 consulted on November 8th 2021); and only eight species have been recorded in the neighbouring
75 island of Sardinia (Salamanna, 1982, 1983). To the best of our knowledge, only one *Psychoda*
76 species, *P. (Psychodocha) cinerea* Banks, 1894 is listed from Corsica out of the 377 aquatic insect
77 species recorded from 41 Corsican littoral wetland areas (Moubayed-Breil et al. 2013). In Corsica,
78 we expected to observe several other *Psychoda* species which have large distribution ranges (i.e.
79 cosmopolitan or Palaearctic) such as *Psychoda (Tinearia) alternata* Say, 1924 and *P. (Logima)*
80 *albipennis* Zetterstedt, 1850 (Ježek et al. 2018b), and/or frequent in adjacent territories (i.e.
81 mainland France, mainland Italy, and Sardinia).

82

83 For the last decade, molecular data have been used to explore taxonomic questions at different
84 hierarchical levels such as Psychodidae subfamilies (Curler & Moulton 2012) or Psychodinae tribes
85 (Espindola et al. 2012; Kvitte 2018). Moreover, the monophyly of *Psychoda s. l.* was
86 phylogenetically highly supported (Espindola et al. 2012; Grace-Lema et al. 2015; Kvitte 2018).
87 DNA barcoding, based on a fragment of the mitochondrial gene Cytochrome c Oxidase subunit I
88 (COI), has been shown to be an efficient complementary molecular information for species
89 identification (Hebert et al. 2003). In a study on Finnmark Psychodidae, each species corresponded
90 to a cluster of COI barcode sequences; moreover all sequences from *Psychoda s. l.* specimens
91 grouped in a cluster different from the Pericomaini sequences (Kvitte & Andersen 2012).
92 Interestingly, the two *Psychoda* species with the lowest support (~86% versus 100%) were *P.*
93 *(Logima) albipennis* and *P. (Tinearia) lativentris* Berdén, 1952, two problematic species from a

94 morphological point of view (Kvifte & Andersen 2012). Also, DNA barcoding studies recently
95 performed on Phlebotominae (Psychodidae) revealed the presence of several unnoticed complexes
96 of morphospecies (Tharmatha et al. 2017), but conflating mitochondrial DNA barcodes and species
97 without any other supporting evidence can be misleading or even erroneous (Haarto & Ståhls 2014;
98 Teske et al. 2018).

99
100 Here we report new records of Corsican *Psychoda* collected in the Ajaccio region. Each studied
101 specimen was morphologically identified and barcoded using COI and COII sequences to confirm
102 its identification, and to detect haplotype species variability. Our specific aims were: i) to establish
103 a first list of *Psychoda s. l.* species for Corsica; ii) to compare this *Psychoda* diversity to those of
104 some neighbouring European regions; iii) to associate the DNA barcode of each specimen with a
105 photographed slide preparation, and iv) to highlight and discuss taxonomical confusions resulting
106 from previous studies based on morphological data alone.

107

108 **Materials and methods**

109 ***Sample collection***

110 Between January and March 2017, November and December 2017, and January and March 2020,
111 adult specimens of Psychodini (mainly *Psychoda* spp) were intensively collected from a compost
112 bin in the Ajaccio region of Corsica (GPS coordinates: 41°54'45.9"N 8°39'10.6"E), using a mouth
113 aspirator, and stored in 75% ethanol. Some additional specimens from two compost bins in
114 mainland France (Montans, GPS: 43°51'06.6"N 1°49'25.9"E; Virazeil, GPS: 44°31'13.3"N
115 0°13'28.6"E) and from *Arum* sp. inflorescences (Rillieux-la-Pape, GPS: 45°50'13.98"N
116 4°54'18.75"E) were also collected for comparative purposes.

117

118 ***Morphological identifications***

119 All collected specimens were first sorted to morphotypes using a stereomicroscope. Thereafter,
120 some specimens of each morphotype and, when possible, for both sexes, were dissected and
121 mounted on glass slides for identification. For these specimens, the genitalia (cleaned with
122 potassium hydroxide), the head with the antennae, and one wing were mounted. The identification
123 to species level was thus achieved by the examination of the sexual appendages, antennal segments,
124 and the venation of the wing (following Ježek 1983, 1984; Vaillant 1988, 1989; Withers 1989;
125 Ježek 1990; Ježek & Van Harten 2005). Some morphological identifications were also confirmed
126 by two international specialists of the tribe, Jan Ježek (National Museum, Department of
127 Entomology, Czech Republic) and Gunnar M. Kvifte (Nord University, Norway). The unused parts
128 of these specimens, i.e. the thorax and the anterior part of the abdomen, were individually stored
129 in 75% ethanol for complementary molecular studies. Moreover, for each of the specimens selected
130 for DNA barcoding (see below), photographs of the corresponding slide preparations were also
131 deposited in BOLD (Table 2, Ratnasingham & Hebert 2007). All the mounted specimens are
132 preserved and available at the laboratory “Chimie et Biomasse” of the University of Corsica in
133 Ajaccio.

134

135 ***DNA Barcoding***

136 Some of the dissected specimens were also barcoded by sequencing a fragment of the Cytochrome
137 c Oxidase subunit I (COI) (Hebert et al. 2003). Genomic DNA was extracted from the thorax and
138 anterior part of the abdomen using the E.Z.N.A. Insect DNA Kit (Omega Biotek). A fragment of
139 the COI gene (658 bp) was amplified by PCR using the LCO1490

140 (GGTCAACAAATCATAAAGATATTGG) and HCO2198
141 (TAAACTTCAGGGTGACCAAAAATCA) primers (Folmer et al. 1994). A smaller fragment
142 (280 bp) was amplified for specimens of *Psychoda (Psycha) grisescens* Tonnoir, 1922, for which
143 the 658 bp fragment failed to be amplified. Specifically, we used the inner primers GrisescFor
144 (CGAGCTGAATTAGGTCATCC) and GrisescRev (ACAGAAGGTCCTCCATG), as suggested
145 by Anja Hoerger (University of Salzburg, Austria, pers. comm.). Thermocycling conditions for the
146 658 bp fragment of the COI gene were: an initial denaturation at 94°C for 3 min, followed by 5
147 cycles of 30 s denaturation at 94°C, 30 s annealing at 45°C, 1 min elongation at 72°C and 35 cycles
148 of 1 min denaturation at 94°C, 1 min annealing at 51°C, 1 min elongation at 72°C, and a terminal
149 elongation at 72°C for 10 min. The 280bp fragment of the COI gene was amplified using the
150 following thermocycling conditions: initial denaturation at 94°C for 3 min, followed by 35 cycles
151 of 30 s denaturation at 94°C, 45 s annealing at 50°C, 1 min elongation at 72°C, and a terminal
152 elongation at 72°C for 5 min. DNA sequences were purchased from Biofidal
153 (<https://www.biofidal.com/>) and obtained by Sanger capillary DNA sequencing. COI sequences
154 were deposited in the online databases GenBank and BOLD.
155 We searched for each COI barcode in the GenBank using BLAST and in BOLD database to
156 associate the sequences from our specimens with existing BINs, in order to find similar sequences
157 that could potentially corroborate our identifications. BINs (Barcode Index Numbers) are aimed at
158 being an automated objective registry of genetic diversity in DNA barcode databases
159 (Ratnasingham & Hebert 2013). BINs represent clustered barcode sequences that create MOTUs
160 (Molecular Operational Taxonomic Units) closely reflective of species groupings and are
161 considered more robust than relying on a simple genetic divergence threshold (Ratnasingham &
162 Hebert 2013).

163 When we had only one sequence from a given BIN (namely *P. uniformata*, *P. satchelli* and *P.*
164 *alternata*), we selected randomly in BOLD database one 658bp sequence from the same BIN for
165 the clustering analysis (Table 3). For two species (namely *P. gemina* and *P. cinerea*) the sequences
166 from our specimens were attributed a BIN different from the BIN with the same identification in
167 BOLD database. Consequently, two 658bp sequences corresponding to each of these two BINs
168 were randomly chosen for the clustering analysis (Table 3). Based on the published latest
169 phylogenetic study (Kvifte 2018), five additional Psychodini species, were also used as outgroups
170 to root the tree (Table 3).

171 COI sequences were aligned using the ClustalW tool available into MEGA X (Kumar et al. 2018).
172 Then, a Neighbour-Joining (NJ) tree was produced in MEGA X using the Kimura's 2 Parameter
173 (K2P) distance model over 10,000 replicates to visualise COI sequences clustering (Kumar et al.
174 2018). We also amplified a partial fragment of the Cytochrome c Oxidase subunit II (COII, see lab
175 protocol in supplementary material). However, as the specimens clustering and the Neighbour-
176 Joining trees obtained using COI or COII were similar, the COII results are presented in the
177 supplementary material.

178

179

Results

180 *Morphological assessment*

181 About 2,000 specimens were collected in total, most of them from the compost bin, and 211 of
182 them were dissected and mounted. A total of 16 distinct morphotypes were identified to species
183 level, 14 of which were found in Corsica, as well as two strictly continental species (Table 2). As
184 reviewed in the introduction, only *Psychoda (Psychodocha) cinerea* had been previously listed
185 from Corsica. Hence, 13 of the 14 species identified from Corsican specimens in Table 2 should

186 be considered as new records for Corsica. Finally, two species we identified, *P. (Chodopsycha)*
187 *divaricata* Duckhouse, 1968 and *P. (Psychodocha) uncinula*, Quate, 1954 appear to be new records
188 for Europe. Both species were found in Corsica, and *P. (Psychodocha) uncinula* was also found in
189 mainland France (Table 2).

190

191 ***DNA Barcoding***

192 GenBank accession numbers, Barcode Index Numbers (BINs) and BOLD ProcessID codes are
193 listed in Table 2 and publicly available. The COI (658 bp) and COII (582 bp considering only the
194 coding region) sequences were respectively obtained for 54 and 59 *Psychoda* specimens, covering
195 all the 16 identified morphotypes (Table 2, Supplementary Table 1). All the COI sequences
196 produced in the present study belonged to BINs already present in the online BOLD database. In
197 contrast, only one COII sequence is available on GenBank for a non-identified *Psychoda*
198 (Beckenbach & Borkent 2003); all of the COII sequences generated in this study were therefore
199 novel (Supplementary Table 1).

200

201 Interestingly, the BIN algorithm generated 18 distinct BINs for the 16 identified morphotypes,
202 among which 12 were already associated to a species name and six were not (BOLD accessed on
203 June 12 2021) (Table 2). Most of the initial morphotype designations were confirmed except the
204 specimens identified as *P. (Logima) satchelli* Quate, 1955 and *P. (Tinearia) alternata*, which were
205 actually forming two distinct BINs within each species. No morphological differences were
206 observed among the specimens identified as *P. (Logima) satchelli* on the antennae, wings or
207 genitalia (male and female); the same was true for the specimens of *P. (Tinearia) alternata*.
208 Interestingly, our unique sequence corresponding to a specimen morphologically identified as

209 *Psychoda (Psychodocha) gemina* (named afterwards *P. sp. aff. gemina*) from mainland France was
210 attributed with a different BIN (BOLD:ACR3941) from the specimens identified as *P.*
211 (*Psychodocha) gemina* Eaton, 1904 in BOLD database (BOLD:AAU4648). In the same manner,
212 our sequences of *Psychoda (Psychodocha) cinerea* from both mainland France and Corsica belong
213 to a BIN (BOLD:ACG4180) different from the BIN identified as *P. (Psychodocha) cinerea*
214 (BOLD:ACF6513) in BOLD.

215

216 ***Neighbour-Joining tree***

217 Bootstrap support values were high (e.g. 99%) for all the species clusters and low for internal nodes
218 except for two cluster pairs presenting high sequence similarities (Figure 1) for the *P. (Tinearia)*
219 *alternata* species (BOLD:AAF9306 and BOLD:ACM5462; 99%) and the *P. (Psychodocha)*
220 *cinerea* species (BOLD:ACG4180 and BOLD:ACF6513; 99%). Interestingly, the Neighbour-
221 Joining relationship between the two entities of the *P. (Logima) satchelli* species complex
222 (BOLD:ACG1924 and BOLD:AAF9311) is not highly supported (67%), suggesting a lesser
223 sequence similarity.

224

225 The NJ reconstruction based on the coding region of the COII sequences (Supplementary Figure)
226 also confirmed the presence of 18 distinct genetic entities with strong support values ($\geq 99\%$) out
227 of the 16 morphotypes. The high sequence similarity between the two entities of the *P. (Tinearia)*
228 *alternata* species is also confirmed (100%). Interestingly, the unique *Psychoda* COII sequence
229 available on GenBank clustered within the *P. (Logima) satchelli* species but does not match any of
230 the two Corsican clusters corresponding to the COI BINs (BOLD:AAF9311 and BOLD:ACG1924,
231 Supplementary Figure).

232
233
234
235
236
237
238
239
240
241
242
243
244
245
246
247
248
249
250
251
252
253
254

Discussion

Psychoda diversity

Our sampling over nine months at a single site near Ajaccio produced a checklist of 16 *Psychoda sensu lato* species for Corsica, which represent 66% of the known diversity for mainland France (Wagner 2013; Table 1) and twice the diversity of the neighbouring island of Sardinia (Salamanna 1983; Table 1). The regional widespread species (France, Italy and Sardinia) such as *P. (Logima) albipennis*, *P. (Tinearia) alternata*, *P. (Psychodocha) cinerea*, *P. (Tinearia) lativentris*, *P. (Psychodula) minuta* Banks, 1984 and *P. (Psychomora) trinodulosa* Tonnoir, 1922 were also recovered from Corsica (Table 1). Several species such as *P. (Psycha) grisescens*, *P. (Psychoda) phalaenoides* and *P. (Logima) satchelli* recorded from mainland France, Corsica and mainland Italy are not reported from Sardinia suggesting probably a lesser sampling effort (Table 1). *Fauna Europaea* (as reported in Table 1) lists *Psychoda (Logima) surcoufi* Tonnoir, 1922 as present in Europe; however, this species is synonymous with the American *Psychoda (Logima) sigma* Kincaid 1899 according to Del Rosario (1936) and several authors (Ježek 2003; Prpić 2015; Kvifte 2019). Note that Withers (1988) also recognized these taxa as synonyms, but omitted to consider the principle of priority, thus considering wrongly *P. (Logima) surcoufi* Tonnoir, 1922 as the valid name instead of *P. (Logima) sigma* Kincaid, 1899. The corresponding BIN (BOLD:AAU4664) is represented by 591 COI sequences in BOLD from specimens collected in Australia, New Zealand, Norway, Germany, Canada, Kenya, Colombia and now France. Interestingly, no specimen of *P. (Logima) sigma* from the type locality in the American Pacific coast (Kincaid 1899) has yet been sequenced.

255 *New European records*

256 Our survey adds two new *Psychoda* species to the fauna of Europe, namely *Psychoda*
257 (*Chodopsycha*) *divaricata* and *P. (Psychodocha)* *uncinula*. The first species, *P. (Chodopsycha)*
258 *divaricata*, is represented by 12 sequenced specimens in BOLD and corresponds to a BIN
259 (BOLD:ACN1858) including specimens distributed in Argentina, Brazil and now France.
260 Similarly, *P. (Psychodocha)* *uncinula* with 128 sequenced specimens in BOLD corresponds to a
261 BIN (BOLD:ACD9559) comprising specimens from the USA, China, Russia and now France.
262 Interestingly, *P. (Psychodocha)* *uncinula*, described from Hawaii, USA (Quate 1954), has never
263 been recorded in Europe, while it was by far the most abundant species in the compost bin in our
264 two sampling sites of mainland France. Moreover, the genitalia of both males and females of this
265 species are very distinctive, when compared to the European species listed in *Fauna Europaea*,
266 and thus this species should not be easily missed by specialists. However, *P. (Psychodocha)* *itoco*
267 Tokunaga & Komyo, 1954 – a species described from Japan where it is commonly found
268 (Tokunaga & Komyo 1954; Tokunaga 1957) – has been recorded in Czech Republic and Norway,
269 with a first occurrence reported in 1994 (Ježek 2003; Salmela et al. 2007; Kvifte 2019).
270 Interestingly, on the basis of the drawings of Quate (1954), Tokunaga & Komyo (1954) and
271 Tokunaga (1957), it appears that the genitalia of both sexes are almost indistinguishable from those
272 of *P. (Psychodocha)* *uncinula*. Thus, possible synonymy between *P. (Psychodocha)* *itoco* and *P.*
273 (*Psychodocha*) *uncinula* should be considered. If this is the case, the valid name of this taxon ought
274 to be *P. (Psychodocha)* *uncinula* Quate, 1954, with *P. (Psychodocha)* *itoco* Tokunaga & Komyo,
275 1954 as a junior synonym, since the description of *P. (Psychodocha)* *uncinula* was published a few
276 months earlier (March 1954) than *P. (Psychodocha)* *itoco* (July/September 1954). Further surveys
277 will be interesting to better understand the distribution of these new non-European psychodid

278 species and to study their colonization routes. Finally, the *Psychoda sensu lato* diversity presented
279 here will certainly increase in the next few years, as insect diversity is studied over Corsica by the
280 program “*la Planète revisitée*” coordinated by the Muséum national d’Histoire naturelle
281 (<http://laplaneterevisitee-corse.mnhn.fr/>).

282
283 Our molecular study was not designed to resolve the relationships among taxa (contrary to
284 Espíndola et al. 2012; Kvifte 2018) and we thus cannot argue about the phylogenetic value of the
285 splitting of the genus *Psychoda* proposed by Ježek (1984) and supported by Espíndola et al. (2012).
286 One interesting result is that *Psychoda (Psychodocha) gemina* appears to be sister (e.g. the
287 genetically most dissimilar) to remaining *Psychoda sensu lato* in both published molecular
288 phylogenies and the present study (Espíndola et al. 2012; Kvifte 2018; Figure 1). As for
289 Phlebotominae (Tharmatha et al. 2017), the COI barcoding approach also revealed the presence of
290 three unnoticed haplotype complexes. However, while the *P. (Tinearia) alternata* and *P.*
291 (*Psychodocha*) *cinerea* species were highly supported in both COI and COII NJ trees ($\geq 99\%$), the
292 relationship between the two haplotypes identified as *P. (Logima) satchelli* was less supported
293 (67% and 85% for the COI and COII, respectively). Based on only our COI barcodes, it cannot be
294 stated whether this variability is due to the coexistence of two mitochondrial lineages for a given
295 species or the existence of two species morphologically very similar (e.g. cryptic). Consequently,
296 in the present paper, we refrain from proposing any synonymies, species resurrection or description
297 of new species as highlighted only by the COI barcoding. Such statements would need the revision
298 of the corresponding type specimens and related species but also complementary genetic data such
299 as nuclear genes since mitochondrial DNA barcodes without any other supporting evidence can be
300 misleading for species delimitation (Haarto & Ståhls 2014; Teske et al. 2018). However, such

301 revision would certainly clarify the taxonomic boundaries of the species composing the three
302 revealed haplotype complexes which are discussed separately in the following paragraphs.

303

304 ***Psychoda alternata species***

305 Our sequence of *Psychoda (Logima) alternata* from mainland France belongs to a BIN
306 (BOLD:AAF9306) known from 1,129 COI published sequences, 1,075 of them been identified as
307 *P. (Logima) alternata*. The sequenced specimens were sampled from all over the world, suggesting
308 a cosmopolitan distribution of this haplotype (Americas, Europe, Africa, and Asia). Its nearest BIN
309 is another taxon (BOLD:ACM5462) which has been less sampled (39 published sequences) and
310 only scarcely identified as *P. (Logima) alternata* (4 sequences). The specimens from this BIN
311 present a narrower distribution: Egypt, Bulgaria, Turkey, Israel, Germany and now Corsica
312 (France), and none are listed from the Americas. As the type locality of *P. (Logima) alternata* is in
313 Pennsylvania, USA (Say 1824), we propose that specimens from mainland France
314 (BOLD:AAF9306) likely represent *P. (Logima) alternata* as traditionally accepted, while
315 specimens from Corsica (BOLD:ACM5462) represent a different haplotype centred around the
316 Mediterranean (plus Germany). Complementary morphological and genetic studies are needed to
317 establish whether the haplotype of the Corsican specimens corresponds or not to a new (cryptic)
318 species.

319

320 ***Psychoda cinerea species***

321 Our sequences of *Psychoda (Psychodocha) cinerea* from both mainland France and Corsica belong
322 to a BIN (BOLD:ACG4180) known from 67 European COI sequences (Germany, Denmark,
323 Belarus, Bulgaria, France, Montenegro) and associated with different tentative identifications: *P.*

324 *cinerea* (two sequences), *P. cf. cinerea* (four sequences) or *P. phalaenoides* (19 sequences). The
325 nearest BIN is another taxon identified as *P. (Psychodocha) cinerea* (BOLD:ACF6513) and
326 represented by 155 COI sequences (153 of them been identified as *P. cinerea*) from Canada, United
327 States, Egypt, New Zealand, Germany, Norway, Belarus, South Africa, Bulgaria, France, Israel
328 and Lebanon. The nearest BIN of the latter is a non-public sequence (BOLD:ADD3093) from the
329 Balearic Islands (Spain). It thus appears that the *P. (Psychodocha) cinerea* is in fact a complex of
330 three distinct haplotypes. As the type locality of *P. (Psychodocha) cinerea* is New York, USA
331 (Banks 1894), it can be supposed that specimens from the Balearic Islands (BOLD:ADD3093) and
332 from mainland France and Corsica (BOLD:ACG4180), both BINs absent from the Americas,
333 represent two different old-world haplotype mitochondrial lineages. Further complementary
334 morphological and genetic studies are needed to establish whether these haplotypes are new
335 (cryptic) species, particularly the one only reported from the Balearic Islands.

336

337 ***Psychoda satchelli* species**

338 In Corsica, we collected two taxa that appear to be affiliated with *P. (Logima) satchelli* Quate, 1955
339 corresponding to two BINs (BOLD:ACG1924 and BOLD:AAF9311). We obtained six sequences
340 of the BIN BOLD:ACG1924, already known from 123 published sequences, all from Europe:
341 Slovakia, Germany, Norway, Austria, Denmark, Bulgaria, and now Corsica (France). The
342 specimens in BOLD:ACG1924 have been identified as *P. albipennis* (five sequences), *P. satchelli*
343 (four sequences) or *P. cf. satchelli* (31 sequences). The second taxon (BOLD:AAF9311) is
344 represented by 273 published sequences, identified as *P. satchelli* (19 sequences) or *P. cf. satchelli*
345 (one sequence). Note that we only obtained one COI sequence from Corsica. However, this appears
346 to be due to amplification issues, since we obtained six sequences of *P. (Logima) satchelli*

347 corresponding to this BIN number when using the COII gene. Its distribution range is more
348 cosmopolitan with samples from the United States, Canada, Slovakia, Norway, Germany, Bulgaria,
349 and now Corsica (France). Interestingly, the nearest BINs of both genetic clusters containing
350 specimens identified as *P. (Logima) satchelli* are two BINs (BOLD:ACD1254 and
351 BOLD:ACS7943) with no public records available, each represented by only one sequence from
352 Canada. Moreover, a published COII sequence belongs to this cluster (Beckenbach & Borkent
353 2003) but does not match to any of the two Corsican taxa. Consequently, it seems that the *P.*
354 (*Logima*) *satchelli* is a complex of four distinct haplotypes. It is likely that the BIN
355 BOLD:AAF9311 is the best candidate for representing *P. (Logima) satchelli*, since it is the only
356 taxa known from the USA, the country from which the type specimen has been collected (Quate
357 1955). The other haplotype represents a different European mitochondrial lineage. Complementary
358 morphological and genetic studies are needed to establish whether the two haplotypes of the
359 Corsican specimens correspond or not to distinct (cryptic) species.

360

361 ***Psychoda gemina confusion***

362 Our sample of *Psychoda (Psychodocha)* sp. aff. *gemina* from mainland France belongs to a BIN
363 (BOLD:AAU4648) corresponding to 1,349 sequences reported in BOLD from non-identified
364 specimens and recorded from the USA, New Zealand, Australia, Kenya, South Africa and now
365 France. The nearest BIN (BOLD:AAP4717) is an Australian unidentified Psychodidae (42
366 sequences). However, the probable and best candidate for *Psychoda (Psychodocha) gemina*,
367 described from England (Eaton 1904), is BOLD:ACR3941 known from 192 sequences, 165 of
368 them identified as *P. gemina*, and collected from several European countries, such as Norway,
369 Sweden, Finland, Germany, Bulgaria, Denmark, Belarus and France. The nearest BINs to *P.*

370 (*Psychodocha gemina*) are two unidentified *Psychoda* species from Costa Rica (BOLD:ADB1380
371 and BOLD:ADF 3686). It therefore appears that the relationship between *P. (Psychodocha) gemina*
372 and *Psychoda (Psychodocha) sp. aff. gemina* (F168 SPE, Virazeil, France) which appear
373 morphologically similar to us, if any, remains unelucidated.

374

375

Conclusion

376 It is interesting to note that, among the 16 *Psychoda sensu lato* morphotypes recorded from Corsica
377 and mainland France, the COI barcoding highlighted the presence of possible as many as 18 distinct
378 taxa. While 14 out of 15 species recorded in Corsica are new for the island, two species are new
379 for France and Europe (*P. (Psychodocha) uncinula* and *P. (Chodopsycha) divaricata*). These new
380 records show that distribution ranges can be highly dynamic through expansion with climate
381 change or introductions through increases in global trade. Moreover, our DNA barcoding approach
382 allowed for the detection of at least three distinct haplotype complexes, possibly representing some
383 taxa that are most likely undescribed. A study looking at morphological differences between the
384 specimens corresponding to these BINs is further required. But even in such case, it can be difficult
385 to determine which taxa from the complex corresponds to the reference species, since no barcode
386 sequence has been yet generated from specimens from the type localities. It is also interesting to
387 note that all the COI barcodes generated in this study are already present on BOLD database,
388 suggesting that most of the temperate Psychodid diversity has likely already been sequenced but
389 not properly named. In BOLD (as of January 12th 2022), there are 13,240 published sequences
390 identified as belonging to the genus *Psychoda* corresponding to 58 BINs; however, only 30 of these
391 BINs have a species name, including four BINs associated with several species names.
392 Consequently, a great effort should be made in re-analyse the morphological characters of

393 specimens corresponding to these BINs in order to better understand the morphological variability
394 in *Psychoda sensu lato*. A complementary molecular study using nuclear genes of specimens
395 corresponding to different BINS would be informative in resolving the question about haplotype
396 or species diversity. It is fascinating that even though Psychodinae have been studied in temperate
397 regions for over 125 years (Eaton 1893 and afterwards), many questions remain, concerning not
398 only their taxonomy, but also their biogeography, their ecology and their evolutionary history.

399

400 **Acknowledgements**

401 Financial support was supported by University of Corsica through its post-doctoral program and
402 the CPER project (N°40317) “BiodivCorse – Explorer la Biodiversité de la Corse” (Collectivité de
403 Corse – Ministère de la cohésion des territoires et des relations avec les collectivités territoriales).
404 The authors wish also to thank Jan Ježek (National Museum, Department of Entomology, Czech
405 Republic) and Gunnar M. Kvifte (Nord University, Norway) for helping with some specimen
406 identifications, Anja Hoerger (University of Salzburg, Austria) for her advice on the molecular
407 analyses, Mark Szenteczki for correcting and proofreading of the manuscript, and two anonymous
408 reviewers for their constructive suggestions on the manuscript.

409

References

- 410
411 Albre J, Quilichini A, Gibernau M. 2003. Pollination ecology of *Arum italicum* (Araceae).
412 Botanical Journal of the Linnean Society. 141(2):205-214.
- 413 Banks N. 1894. Some Psychodidae from Long Island, N.Y. The Canadian Entomologist.
414 26(12):329-333.
- 415 Beckenbach AT, Borkent A. 2003. Molecular analysis of the biting midges (Diptera:
416 Ceratopogonidae), based on mitochondrial cytochrome oxidase subunit 2. Molecular
417 Phylogenetics and Evolution. 27(1):21-35.
- 418 Bravo F, Cordeiro D, Chagas C. 2006. Two new species and new records of *Psychoda* Latreille
419 (Diptera: Psychodidae) from Brazil, with comments on supraspecific classification of the
420 genus. Zootaxa. 1298:1-15.
- 421 Chartier M, Pélozuelo L, Buatois B, Bessièrre J-M, Gibernau M. 2013. Geographic variations of
422 odour and pollinators, and test for local adaptation by reciprocal transplant of two European
423 *Arum* species (Araceae). Functional Ecology. 27(6):1367-1381.
- 424 Curler GR, Moulton JK. 2012. Phylogeny of psychodid subfamilies (Diptera: Psychodidae)
425 inferred from nuclear DNA sequences with a review of morphological evidence for
426 relationships. Systematic Entomology. 37:603–616.
- 427 Dahl C, Krivosheina NP, Krzeminska E, Lucchi A, Nicolai P, Salamanna G, Santini L, Skuhrava
428 M, Zwick P. 1995. Fascicolo 64 - Diptera Blephariceromorpha, Bibionomorpha,
429 Psychodomorpha, Ptychopteromorpha, pp. 35-36. In: Minelli A, Ruffo S. and La Posta S
430 editors. Checklist delle specie della fauna Italiana: Bologna, Italy, Edizione Calderini; p.
431 39.

- 432 Del Rosario F. 1936. The American species of *Psychoda* (Diptera: Psychodidae). The Philippine
433 Journal of Science. 59:85-148.
- 434 Eaton AE. 1893. A synopsis of British Psychodidae. Entomologist's Monthly Magazine. 29:120-
435 130.
- 436 Eaton AE. 1904. New genera of European Psychodidae. Entomologist's Monthly Magazine. 40:55-
437 59.
- 438 Espíndola A, Buerki S, Jacquier A, Ježek J, Alvarez N. 2012. Phylogenetic relationships in the
439 subfamily Psychodinae (Diptera, Psychodidae). Zoologica Scripta. 41(5):489-498.
- 440 Folmer O, Black M, Hoeh W, Lutz R, Vrijenhoek R. 1994. DNA primers for amplification of
441 mitochondrial cytochrome *c* oxidase subunit I from diverse metazoan invertebrates.
442 Molecular Marine Biology and Biotechnology. 3(5):294-299.
- 443 Grace-Loma DM, Yared S, Quitadamo A, Janies DA, Wheller WC, Balkew M, Hailu A, Warburg
444 A, Clouse RM. 2015. A phylogeny of sand flies (Diptera: Psychodidae: Phlebotominae),
445 using recent Ethiopian collections and a broad selection of publicly available DNA
446 sequence data. Systematic Entomology. 40:733-744.
- 447 Haarto A, Ståhls G. 2014. When mtDNA COI is misleading: congruent signal of ITS2 molecular
448 marker and morphology for North European *Melanostoma* Schiner, 1860 (Diptera,
449 Syrphidae). ZooKeys. 431:93-134.
- 450 Hebert PDN, Cywinska A, Ball SL, deWaard JR. 2003. Biological identifications through DNA
451 barcodes. Proceedings of the Royal Society B: Biological Sciences. 270(1512):313-321.
- 452 Ježek J. 1983. Intergeneric relationships of selected tribes of the subfamily Psychodinae (Diptera,
453 Psychodidae). Acta Entomologica Musei Nationalis Pragae. 41:255-259.

- 454 Ježek J. 1984. Six new genera of the tribe Psychodini End. (Diptera, Psychodidae). Acta Faunistica
455 Entomologica Musei Nationalis Pragae. 17(198):133-154.
- 456 Ježek J. 1990. Redescriptions of nine common palaeartic and holartic species of Psychodini End.
457 (Diptera: Psychodidae). Acta Entomologica Musei Nationalis Pragae. 43:33-83.
- 458 Ježek J. 2003. New faunistic data and check list of non phlebotomine moth flies (Diptera,
459 Psychodidae) from the Czech and Slovak republics. Journal of the National Museum
460 (Prague), Natural History Series. 172(1-2):121-132.
- 461 Ježek J. 2004. New faunistic data of non-phlebotomine moth flies (Diptera, Psychodidae) from the
462 Palearctic region, pp. 141-151. In: Kubík Š. and Barták M, editors. Dipterologica
463 Bohemoslovaca Vol. 11. Folia Facultatis Scientiarum Naturalium Universitatis
464 Masarykianae Brunensis, Biologia. Brno: Masaryk University; p. 346.
- 465 Ježek J. 2007. New records of moth flies (Diptera, Psychodidae) from Poland with description of
466 *Apsycha* gen. nov. Acta Zoologica Universitatis Comenianae. 47(2):145-160.
- 467 Ježek J, Grootaert P, Lock K, Manko P, Oboňa J. 2018a. Moth flies (Diptera: Psychodidae) from
468 the Belgian transition of the Atlantic to the Central European faunal zones. Biodiversity &
469 Environment. 10(2):5-17.
- 470 Ježek J, Manko P, Oboňa J. 2018b. Checklist of known moth flies and sand flies (Diptera,
471 Psychodidae) from Armenia and Azerbaijan. ZooKeys. 798:109-133.
- 472 Ježek J, Oboňa J, Příkryl I, Mikátová B. 2018c. Moth flies (Diptera: Psychodidae) of the western
473 Hercynian mountains, Sokolov open-cast coal mines and dumps (Czech Republic). Acta
474 Musei Silesiae Scientiae Naturales. 67(3):193-292.

- 475 Ježek J, Van Harten A. 1996. Psychodidae (Diptera) of the Cape Verde Islands, captured with a
476 Johnson-Taylor suction trap. *Boletim do Museu Municipal do Funchal, História Natural*.
477 48:63-86.
- 478 Ježek J, Van Harten A. 2005. Further new taxa and little-known species of non-biting moth flies
479 (Diptera, Psychodidae) from Yemen. *Acta Entomologica Musei Nationalis Pragae*. 45:199-
480 220.
- 481 Ježek J, Yağci S. 2005 Common non-biting moth flies (Insecta, Diptera, Psychodidae) new to the
482 fauna of Turkey. *Turkiye Parazitoloji Dergisi*. 29(3):188-192.
- 483 Kincaid T. 1899. The Psychodidae of the Pacific Coast. *Entomological News and Proceedings of*
484 *the Entomological Section of the Academy of Natural Sciences of Philadelphia*. 10:30-37.
- 485 Kroča J, Ježek J. 2015. Moth flies (Diptera: Psychodidae) of the Moravskoslezské Beskydy Mts
486 and the Podbeskydská pahorkatina Upland, Czech Republic. *Acta Musei Silesiae, Scientiae*
487 *Naturales*. 64(1):27-50.
- 488 Kroča J, Ježek J. 2019. Moth flies (Diptera: Psychodidae) of the Moravskoslezské Beskydy Mts
489 and Podbeskydská pahorkatina Upland, Czech Republic, II. *Acta Musei Silesiae, Scientiae*
490 *Naturales*. 68(3):201-232.
- 491 Kumar S, Stecher G, Li M, Knyaz C, Tamura K, Battistuzzi FU. 2018. MEGA X: Molecular
492 Evolutionary Genetics Analysis across computing platforms. *Molecular Biology and*
493 *Evolution*. 35(6):1547-1549.
- 494 Kvifte GM. 2018. Molecular phylogeny of moth flies (Diptera, Psychodidae, Psychodinae)
495 revisited, with a revised tribal classification. *Systematic Entomology*. 43(3):596-605.

496 Kvifte GM. 2019. New records of Norwegian Psychodidae, with the first description of the female
497 of *Trichosepedon balkanicum* (Krek, 1970) comb. nov. Norwegian Journal of Entomology.
498 66:1-10.

499 Kvifte GM, Andersen T. 2012. Moth flies (Diptera, Psychodidae) from Finnmark, northern
500 Norway. Norwegian Journal of Entomology. 59:108–119.

501 Kvifte GM, Boumans L. 2014. Further records and DNA barcodes of Norwegian moth flies
502 (Diptera, Psychodidae). Norwegian Journal of Entomology. 61:11-14.

503 Kvifte GM, Stokkan M, Wagner R. 2016. Review of the Psychodinae from Mallorca, Spain, with
504 description of *Pericoma unipennata*, sp. n. (Diptera, Psychodidae). ZooKeys. 577:149-160.

505 Moubayed-Briel J, Verlaque M, Dominici J-M, Bianconi C-H. 2013. Zones estuariennes de Corse:
506 Données faunistiques, écologiques et biogéographiques. Travaux de l'Institut Scientifique,
507 Rabat, série Zoologie. 49:43-58.

508 Prpić N-M. 2015. Die Schmetterlingsmücke *Psychoda sigma* Kincaid, 1899 (= *Psychoda surcoufi*
509 Tonnoir, 1922) nachgewiesen in Frankfurt am Main (Hessen) in einer Biomülltonne
510 (Diptera: Psychodidae). Nachrichtenblatt der Bayerischen Entomologen. 64(1-2):28-33.

511 Quate LW. 1954. A revision of the Psychodidae of the Hawaiian Islands (Diptera). Proceedings of
512 the Hawaiian Entomological Society. 15(2):335-356.

513 Quate LW. 1955. A revision of the Psychodidae (Diptera) in America, north of Mexico. University
514 of California Publications in Entomology. 10(3):103-273.

515 Quate LW. 1959. Classification of the Psychodini (Psychodidae: Diptera). Annals of the
516 Entomological Society of America. 52:444–451.

517 Ratnasingham S, Hebert PDN. 2007. BOLD: The Barcode of Life Data System
518 (<http://www.barcodinglife.org>). Molecular Ecology Notes. 7(3):355-364.

519 Ratnasingham S, Hebert PDN. 2013. A DNA-based registry for all animal species: the Barcode
520 Index Number (BIN) System. PLoS ONE. 8(7):e66213.

521 Salamanna G. 1982. Psychodinae of Sardinia. I. Psychodini and Telmatoscopini, with descriptions
522 of three new species. Bollettino della Società Entomologica Italiana, Genova. 114(8-
523 10):183-192.

524 Salamanna G. 1983. Le attuali conoscenze sugli Psicodidae della Sardegna (Diptera Nematocera).
525 Biogeographia – The Journal of Integrative Biogeography. 8(1):715-722.

526 Salmela J, Autio O, Ilmonen J. 2007. A survey on the nematoceran (Diptera) communities of
527 southern Finnish wetlands. Memoranda Societatis pro Fauna et Flora Fennica. 83:33-47.

528 Salmela J, Kvifte GM, More A. 2012. Description of a new *Psychoda* Latreille species from
529 Fennoscandia (Diptera: Psychodidae). Zootaxa. 3313:34-43.

530 Say T. 1824. In: Keating WH, editor. Narrative of an expedition to the source of the St. Peter's
531 River, Lake Winnipeck, Lake of the Woods 1823 under the command of Major Long,
532 Volume 2. London, UK:358.

533 Teske PR, Golla TR, Sandoval-Castillo J, Emami-Khoyi A, van der Lingen CD, von der Heyden
534 S, Chiazzari B, van Vuuren BJ, Beheregaray LB. 2018. Mitochondrial DNA is unsuitable
535 to test for isolation by distance. Scientific Reports. 8:8448.

536 Tharmatha T, Gajapathy K, Ramasamy R, Surendran SN. 2017. Morphological and molecular
537 identification of cryptic species in the *Sergentomyia bailyi* (Sinton, 1931) complex in Sri
538 Lanka. Bulletin of Entomological Research. 107(1):58-65.

539 Tokunaga M. 1957. Japanese Psychodidae, IV. *Psychoda* species. The Philippine Journal of
540 Science. 86(4):359-403.

- 541 Tokunaga M, Komyo E. 1954. Japanese Psychodidae, I. *Psychoda* species. The Philippine Journal
542 of Science. 83(3):307-317.
- 543 Vaillant F. 1972. Psychodidae - Psychodinae, pp. 49–108. In Lindner E editor. Die Fliegen Der
544 Palearktischen Region, 9d. Schweizerbartsche Verlagsbuchhandlung, Stuttgart.
- 545 Vaillant F. 1988. Les diptères Psychodidae coprophiles et coprobiontes d'Europe. Bulletin Romand
546 d'Entomologie. 6:1-46.
- 547 Vaillant F. 1989. Contribution à l'étude des Psychodidae mycobiontes. Bulletin de la Société
548 Entomologique de France. 93(5-6):181-191.
- 549 Wagner R. 2013. Fauna Europaea: Psychodini. In: Pape T and Beuk P. 2013. Fauna Europaea:
550 Diptera, Nematocera, Psychodidae, Psychodinae. Fauna Europaea version 2.6.2,
551 <https://fauna-eu.org>.
- 552 Withers P. 1988. Revisionary notes on British species of *Psychoda* Latreille (Diptera, Psychodidae)
553 including new synonyms and a species new to science. British Journal of Entomology and
554 Natural History. 1:69-76.
- 555 Withers P. 1989. Moth flies. Diptera: Psychodidae. Dipterists Digest. 4:1-83.
- 556

557 Table 1. European *Psychoda sensu lato* species list from *Fauna Europaea* (<https://fauna-eu.org/>),
558 accessed on November 8th 2021. Species presence (X) or absence (-) are given for mainland
559 France, Corsica, mainland Italy and Sardinia. Subgenera names have been added following Bravo
560 et al. (2006). Note that *Tinearia* is listed in both *Fauna Europaea*, Global Biodiversity Information
561 Facility (GBIF: <https://www.gbif.org/>) and l’Inventaire National du Patrimoine Naturel (INPN:
562 <https://inpn.mnhn.fr/accueil/index>) as a different genus.

<i>Psychoda</i> species	France	Corsica	Italy	Sardinia
<i>Psychoda (Logima) albipennis</i>	X	–	X	X ¹
<i>P. (Tinearia) alternata</i>	X	–	X	X
<i>P. (Psychoda) alticola</i>	X	–	–	–
<i>P. (Psychomora) armillariphila</i>	X	–	–	–
<i>P. (Copropsychocha) brevicornis</i>	X	–	–	–
<i>P. (Psychodocha) cinerea</i>	X ²	X ³	X	X
<i>P. (Apsyscha) coprophila</i>	X	–	–	–
<i>P. (Psychoda) crassipenis</i>	X ⁴	–	–	–
<i>P. (Psychoda) dolomitica</i>	–	–	X	–
<i>P. (Logima) erminea</i>	X ²	–	X ⁵	–
<i>P. (Logima) fumetaria</i>	X	–	–	–
<i>P. (Psychodocha) gemina</i>	X	–	X ⁵	–
<i>P. (Psycha) grisescens</i>	X	–	X	–
<i>P. (Tinearia) lativentris</i>	X	–	X	X ¹
<i>P. (Chodopsycha) lobata</i>	X	–	X	–
<i>P. (Psychodula) minuta</i>	X	–	X	X
<i>P. (Psychomora) mycophila</i>	X	–	–	–
<i>P. (Logima) parthenogenetica</i>	X	–	X	X
<i>P. (Psychoda) phalaenoides</i>	X	–	X	–
<i>P. (?) pontina</i>	–	–	X	–
<i>P. (Tinearia) pseudoalternicola</i>	–	–	X	X
<i>P. (Apsyscha) pusilla</i>	–	–	X	–
<i>P. (Chodopsycha) quatei</i>	–	–	X	–
<i>P. (?) sarcophila</i>	X	–	–	–
<i>P. (Logima) satchelli</i>	–	–	X	–
<i>P. (Ypsychoda) setigera</i>	X	–	X ⁵	–
<i>P. (Logima) surcoufi</i>	X	–	–	–
<i>P. (?) tridentata</i>	–	–	X	–
<i>P. (Psychomora) trinodulosa</i>	X	–	X ⁰	X
<i>P. (Psychoda) uniformata</i>	–	–	X	–
<i>P. (Psycha) vaillanti</i>	–	–	X	–
<i>P. (Psychoda) villosa</i>	–	–	X	–

<i>P. (Psychoda) virgo</i>	X	–	–	–
<i>P. (Logima) zetterstedti</i>	X ⁵	–	X ⁶	–
Total	24	1	23-24	8

563 ¹species not listed from Sardinia in *Fauna Europaea* but listed in Salamanna1982 (cited as *P. severini*).

564 ²species not listed from France in *Fauna Europaea* but listed in l'INPN Naturel and the GBIF.

565 ³species not listed from Corsica in *Fauna Europaea* but listed in Moubayed-Breil et al. 2013.

566 ⁴species not listed from France in *Fauna Europaea* but listed in Albre et al. 2003 and Chartier et al. 2013.

567 ⁰species listed from Italy in *Fauna Europaea* but not listed in Dahl et al. 1995.

568 ⁵species not listed from Italy in *Fauna Europaea* but listed in Dahl et al. 1995.

569 ⁶species not listed from France and Italy in *Fauna Europaea* but listed in Ježek & Yağci 2005.

570

571

572 Table 2. List of specimens mounted and barcoded (COI) presented in this study. For each specimen,
573 the specimen code corresponds to its morphological identification (P: *Psychoda*, *: mainland
574 France specimen, M: Male, F: Female), the corresponding BINs from BOLD database, the
575 GenBank accession number, the specimen ProcessID code (BOLD) and the locality: Ajaccio
576 (Corsica), Montans (mainland France), Rillieux-la-Pape (mainland France) and Virazeil (mainland
577 France).

Specimen code	BIN	GenBank	ProcessID	Locality
<i>Clogmia albipunctata</i> SPE	AAF9305	MT745768	PSYKO026-20	Ajaccio
<i>P alternata</i> * F170 SPE	AAF9306	MT745813	PSYKO029-20	Montans
<i>P satchelli</i> F86 SPE	AAF9311	MT745803	PSYKO021-19	Ajaccio
<i>P minuta</i> F75 SPE	AAF9314	MT745794	PSYKO019-19	Ajaccio
<i>P minuta</i> M115 SPE	AAF9314	MT745795	PSYKO044-20	Ajaccio
<i>P minuta</i> M85 SPE	AAF9314	MT745796	PSYKO045-20	Ajaccio
<i>P phalaenoides</i> F127 SPE	AAF9317	MT745800	PSYKO049-20	Ajaccio
<i>P phalaenoides</i> F146-SPE	AAF9317	MT745801	PSYKO050-20	Ajaccio
<i>P phalaenoides</i> * F186 SPE	AAF9317	MT745819	PSYKO057-20	Rillieux-la-Pape
<i>P phalaenoides</i> M137 SPE	AAF9317	MT745802	PSYKO051-20	Ajaccio
<i>P albipennis</i> * F171 SPE	AAL7819	MT745810	PSYKO027-20	Montans
<i>P albipennis</i> F25 SPE	AAL7819	MT745769	PSYKO011-19	Ajaccio
<i>P albipennis</i> F4 SPE	AAL7819	MT745770	PSYKO008-19	Ajaccio
<i>P albipennis</i> F48 SPE	AAL7819	MT745771	PSYKO015-19	Ajaccio
<i>P albipennis</i> F64 SPE	AAL7819	MT745772	PSYKO010-19	Ajaccio
<i>P albipennis</i> M42 SPE	AAL7819	MT745773	PSYKO001-19	Ajaccio
<i>P albipennis</i> M63 SPE	AAL7819	MT745774	PSYKO009-19	Ajaccio
<i>P grisescens</i> F138 SPE	AAM9202	MT745814	PSYKO041-20	Ajaccio
<i>P grisescens</i> F140 SPE	AAM9202	MT745815	PSYKO042-20	Ajaccio
<i>P grisescens</i> M141 SPE	AAM9202	MT745816	PSYKO043-20	Ajaccio
<i>P trinodulosa</i> F57 SPE	AAN8770	MT745806	PSYKO017-19	Ajaccio
<i>P trinodulosa</i> F90 SPE	AAN8770	MT745807	PSYKO022-19	Ajaccio
<i>P sp aff gemina</i> * F168 SPE	AAU4648	MT745817	PSYKO034-20	Virazeil
<i>P sigma</i> F15 SPE	AAU4664	MT745804	PSYKO052-20	Ajaccio
<i>P sigma</i> M18 SPE	AAU4664	MT745805	PSYKO053-20	Ajaccio
<i>P uniformata</i> F179 SPE	AAZ5592	MT745818	PSYKO040-20	Ajaccio
<i>P lativentris</i> F11 SPE	ABA0879	MT745792	PSYKO006-19	Ajaccio
<i>P lativentris</i> F46 SPE	ABA0879	MT745793	PSYKO013-19	Ajaccio
<i>P uncinula</i> * F178 SPE	ACD9559	MT745812	PSYKO037-20	Virazeil
<i>P uncinula</i> F35 SPE	ACD9559	MT745787	PSYKO004-19	Ajaccio

<i>P uncinula</i> * M177 SPE	ACD9559	MT745811	PSYKO038-20	Virazeil
<i>P uncinula</i> M56 SPE	ACD9559	MT745788	PSYKO039-20	Ajaccio
<i>P uncinula</i> M62 SPE	ACD9559	MT745789	PSYKO018-19	Ajaccio
<i>P satchelli</i> F79 SPE	ACG1924	MT745781	PSYKO035-20	Ajaccio
<i>P satchelli</i> F94 SPE	ACG1924	MT745782	PSYKO025-19	Ajaccio
<i>P satchelli</i> M105 SPE	ACG1924	MT745783	PSYKO020-19	Ajaccio
<i>P satchelli</i> M116 SPE	ACG1924	MT745784	PSYKO002-19	Ajaccio
<i>P satchelli</i> M117 SPE	ACG1924	MT745785	PSYKO036-20	Ajaccio
<i>P satchelli</i> M38 SPE	ACG1924	MT745786	PSYKO003-19	Ajaccio
<i>P cinerea</i> F136 SPE	ACG4180	MT745777	PSYKO032-20	Ajaccio
<i>P cinerea</i> F154 SPE	ACG4180	MT745778	PSYKO033-20	Ajaccio
<i>P cinerea</i> * F175 SPE	ACG4180	MT745808	PSYKO030-20	Virazeil
<i>P cinerea</i> F92 SPE	ACG4180	MT745779	PSYKO024-19	Ajaccio
<i>P cinerea</i> * M169 SPE	ACG4180	MT745809	PSYKO031-20	Virazeil
<i>P cinerea</i> M66 SPE	ACG4180	MT745780	PSYKO012-19	Ajaccio
<i>P mycophila</i> F131 SPE	ACG6331	MT745797	PSYKO046-20	Ajaccio
<i>P mycophila</i> F157 SPE	ACG6331	MT745798	PSYKO047-20	Ajaccio
<i>P mycophila</i> M159 SPE	ACG6331	MT745799	PSYKO048-20	Ajaccio
<i>P alternata</i> F40 SPE	ACM5462	MT745775	PSYKO007-19	Ajaccio
<i>P alternata</i> M91 SPE	ACM5462	MT745776	PSYKO023-19	Ajaccio
<i>P divaricata</i> F110 SPE	ACN1858	MT745790	PSYKO014-19	Ajaccio
<i>P divaricata</i> M52 SPE	ACN1858	MT745791	PSYKO016-19	Ajaccio
<i>P crassipenis</i> * F187 SPE	ACP0335	MT745820	PSYKO54-20	Rillieux-la-Pape
<i>P crassipenis</i> * F188 SPE	ACP0335	MT745821	PSYKO55-20	Rillieux-la-Pape
<i>P crassipenis</i> * F189 SPE	ACP0335	MT745822	PSYKO56-20	Rillieux-la-Pape

578

579

580 Table 3. List of published specimens used as outgroups, bold reference or closest clade affiliation.
 581 For each specimen, the taxonomic name indicated in the corresponding database (GenBank or
 582 BOLD) is given, with the corresponding BIN, GenBank sequence accession, and/or the specimen
 583 ProcessID code (BOLD).

584

Taxon name	BIN	GenBank	ProcessID
<i>Philosepedon</i> sp.	ABA0882	JQ349584	–
Psychodidae	ACY6029	MG298342	–
Diptera	ACX1419	–	AMTPE864-15
<i>Trichopsychoda hirtella</i>	ACM7618	MF966162	–
<i>Trichopsychoda hirtella</i>	ACM7618	–	GMGMA102-14
<i>Psychoda cinerea</i>	ACF6513	KR989081	–
<i>P. cinerea</i>	ACF6513	MG296511	–
<i>P. gemina</i>	ACR3941	–	GMGRF1794-13
<i>P. gemina</i>	ACR3941	MF966166	–
<i>P. satchelli</i>	AAF9311	–	GMGRF390-13
<i>P. alternata</i>	AAF9306	HQ583069	–
Psychodinae	AAZ5592	–	GMEGM093-14
<i>Psychoda</i> sp.	AAU4648	–	AACTA7603-20

585

586 **Figure legends**

587

588 **Figure 1.** Neighbour-Joining tree based on 68 COI sequences resulting from 10,000 replicates
589 based on the K2P distances. The brackets indicate the different BINs. (P: *Psychoda*, *: mainland
590 France, SPE: sequences generated in the present study). Specimen information is given in Tables
591 2 and 3.

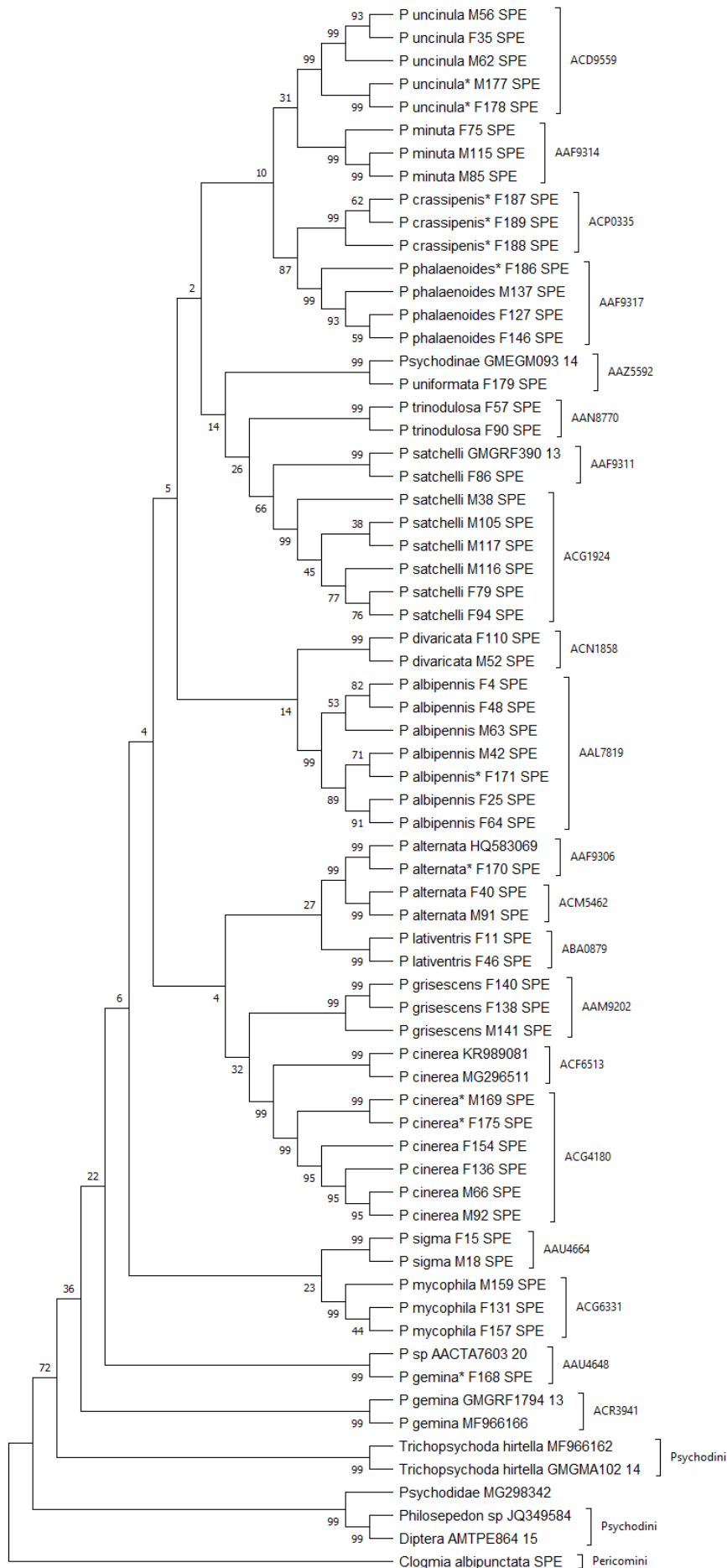


Fig. 1