



**HAL**  
open science

# Growth order and blow up points for the parabolic Burger's equation under dynamical boundary conditions

Joachim von Below, Gaëlle Pincet Mailly, Jean-François Rault

## ► To cite this version:

Joachim von Below, Gaëlle Pincet Mailly, Jean-François Rault. Growth order and blow up points for the parabolic Burger's equation under dynamical boundary conditions. *Discrete and Continuous Dynamical Systems - Series S*, 2013, 10.3934/dcdss.2013.6.825 . hal-03617588

**HAL Id: hal-03617588**

**<https://hal.science/hal-03617588>**

Submitted on 23 Mar 2022

**HAL** is a multi-disciplinary open access archive for the deposit and dissemination of scientific research documents, whether they are published or not. The documents may come from teaching and research institutions in France or abroad, or from public or private research centers.

L'archive ouverte pluridisciplinaire **HAL**, est destinée au dépôt et à la diffusion de documents scientifiques de niveau recherche, publiés ou non, émanant des établissements d'enseignement et de recherche français ou étrangers, des laboratoires publics ou privés.

# Growth order and blow up points for the parabolic Burger's equation under dynamical boundary conditions

Joachim von Below, Gaëlle Pincet Mailly and Jean François Rault

LMPA Joseph Liouville ULCO, FR CNRS Math. 2956  
Université Lille Nord de France  
50, rue F. Buisson, B.P. 699, F-62228 Calais Cedex (France)

**Abstract:** We investigate the blow up points of the one-dimensional parabolic Burger's equation

$$\partial_t u = \partial_x^2 u - u \partial_x u + u^p$$

under a dissipative dynamical boundary condition  $\sigma \partial_t u + \partial_\nu u = 0$  for one bump initial data. A numerical example of a solution pertaining exactly two bumps stemming from its initial data is presented. Moreover, we discuss the growth order of the  $L^\infty$ -norm of the solutions when approaching the blow up time.

**Keywords:** Nonlinear parabolic problems, dynamical boundary conditions, blow up.

**AMS Subject Classification 2000:** 35B05, 35B40, 35K55, 35K57, 35K65, 35R45.

## 1 Introduction

This paper is devoted to the blow up phenomenon of the one-dimensional parabolic Burger's equation with a convection term changing sign under dynamical conditions on the time lateral boundary

$$(1) \quad \begin{cases} \partial_t u = \partial_x^2 u - u \partial_x u + u^p & \text{in } \bar{\Omega} \text{ for } t > 0, \\ B_\sigma(u) = \sigma \partial_t u + \partial_\nu u = 0 & \text{on } \partial\Omega \text{ for } t > 0, \\ u(\cdot, 0) = \varphi \in C(\bar{\Omega}) \end{cases}$$

with the interval  $\Omega = (-a, a)$  and  $1 < p \in \mathbb{R}$ . The results presented here improve and extend those of Section 5 from [3]. It is well known that the system defines a local flow, especially local existence results are well established, see [3] and the references therein. The basic hypotheses on  $\sigma$  and  $\varphi$  are

$$(2) \quad \sigma(-a) \geq 0, \quad \sigma(a) \geq 0,$$

$$(3) \quad \varphi \geq 0, \quad \varphi \in C^2([-a, a]), \quad \varphi'' - \varphi\varphi' + \varphi^p \geq 0 \text{ in } [-a, a].$$

Let  $T = T(\sigma, \varphi)$  denote the blow up time of the maximal solution  $u = u_\sigma$  of Problem (1), that is in our context the maximal existence time of  $u$  with respect to the  $L^\infty$ -norm:

$$T(\sigma, \varphi) = \inf \left\{ s > 0 \mid \lim_{t \nearrow s} \sup \{ |u_\sigma(x, t)| \mid x \in \overline{\Omega} \} = \infty \right\}.$$

It has been shown in [3] that for  $1 < p \leq 2$ , the solutions of Problem (1) exist globally, while for  $p > 2$  they blow up in finite time if  $\varphi > 0$  in  $\overline{\Omega}$ . In the present paper we improve the growth order result in [3] and determine the blow up set for one bump initial data. The last section is devoted to a numerical example displaying a solution pertaining exactly two bumps stemming from its initial data.

## 2 Growth order

For  $p > 3 + \frac{1}{3}$  the solution grow like  $\frac{1}{(T-t)^{\frac{1}{p-1}}}$  when approaching the blow up time  $T = T(\sigma, \varphi)$ , see [3]. Here we shall show that the same holds for  $p > 3$  with  $4p(p-1)(p-3) > 1$ .<sup>1</sup> Recall the following basic

**Lemma 2.1** ([3]) *Under (2) and (3), the solution  $u_\sigma \in C^{2,1}(\overline{\Omega} \times [0, T(\sigma, \varphi)])$  of (1) satisfies  $\partial_t u_\sigma \geq 0$  in  $\overline{\Omega} \times [0, T(\sigma, \varphi))$ . If, in addition,  $\varphi$  is not identically vanishing on  $\Omega$ , then  $\partial_t u_\sigma > 0$  in  $\overline{\Omega} \times (0, T(\sigma, \varphi))$ .*

First, we show that the lower growth order amounts always to  $\frac{-1}{p-1}$  for any  $p > 2$ .

**Lemma 2.2** *Under the hypotheses (2) and (3), the maximal solution  $u$  of (1) satisfies*

$$\| u_\sigma(\cdot, t) \|_\infty \geq \left( \frac{1}{p-1} \right)^{\frac{1}{p-1}} \left( T(\sigma, \varphi) - t \right)^{\frac{-1}{p-1}} \text{ for all } t \in [0, T(\sigma, \varphi)).$$

---

<sup>1</sup>Numerically this means that it is sufficient to choose

$$p > \frac{4}{3} + \frac{2\sqrt{7}}{3} \cos \left( \frac{1}{3} \arccos \left( \frac{107\sqrt{7}}{392} \right) \right) \approx 3.0403022002854636178438894434\dots$$

*Proof.* Set  $g(t) = \|u(\cdot, t)\|_\infty$  for  $t \in [0, T)$ . By (3) and Lemma 2.1 we have  $\partial_t u \geq 0$  on  $[-a, a] \times [0, T)$ . Thus,  $g$  is increasing and continuous on  $[0, T)$ , and, thereby,  $g$  is differentiable almost everywhere in  $[0, T)$ . Choose  $t \in [0, T)$ ,  $0 < h < t$ ,  $x$  and  $x_h$  such that  $g$  is differentiable at  $t$  and

$$\|u(\cdot, t)\|_\infty = u(x, t) \quad \text{and} \quad \|u(\cdot, t-h)\|_\infty = u(x_h, t-h).$$

Then

$$g(t) - g(t-h) = u(x, t) - u(x_h, t-h) \leq u(x, t) - u(x, t-h),$$

and there exists  $\theta \in (0, 1)$  such that

$$u(x, t) = u(x, t-h) + h\partial_t u(x, t-\theta h).$$

We conclude

$$\frac{g(t) - g(t-h)}{h} \leq \partial_t u(x, t-\theta h).$$

and, letting  $h$  tend to 0,

$$g'(t) \leq \partial_t u(x, t).$$

By hypothesis on  $u$  and definition of  $g$ ,

$$\begin{aligned} g'(t) &\leq \partial_x^2 u(x, t) - u(x, t)\partial_x u(x, t) + u(x, t)^p \\ &\leq u(x, t)^p = g(t)^p. \end{aligned}$$

Integration between  $t > 0$  and  $t < \tau < T$  yields

$$g(t)^{1-p} - g(\tau)^{1-p} \leq (p-1)(\tau - t).$$

As  $\tau$  tends to  $T$ , the function  $g(\tau)$  tends to  $\infty$ . This shows

$$g(t)^{1-p} \leq (p-1)(T-t).$$

■

The growth order bound is optimal as the example of constant initial data  $\varphi > 0$  under Neumann boundary conditions displays well.

**Theorem 2.3** *Suppose conditions (2) and (3) to hold and that*

$$(4) \quad p > 3, \quad p(p-1)(p-3) > \frac{1}{4}.$$

*Then there is a constant  $C > 0$  such that the maximal solution  $u_\sigma \in \mathcal{C}^{2,1}([-a, a] \times [0, T(\sigma, \varphi)))$  of (1) satisfies*

$$\|u_\sigma(\cdot, t)\| \leq \frac{C}{(T(\sigma, \varphi) - t)^{\frac{1}{p-1}}} \quad \text{for all } t \in [0, T(\sigma, \varphi)).$$

*Proof.* We can adopt and improve the proofs by Friedman & McLeod [4] and von Below & Pincet [3]. For the reader's convenience we repeat some similar arguments here. Choose  $\alpha > 1$  such that

$$p(p-1)(p-3) \geq \frac{\alpha^2}{4} > \frac{1}{4}.$$

We choose  $M > 1$  et  $M > \frac{1}{6}(\alpha-1)^{\frac{-2}{p-3}}$ . Suppose  $\xi \in ]0, \frac{t_0}{2}]$  with  $t_0 = \frac{\|\varphi\|_\infty^{1-p}}{p-1}$ . We shall show that there exists  $\delta > 0$  such that

$$(5) \quad \partial_t u \geq \delta e^{-Mt}(u^p + u^3) \quad \text{in } [-a, a] \times [\xi, T(\sigma, \varphi)).$$

In the same way as in Corollary 2.7 from [3], the strong minimum principle from [1] yields that there exists a positive constant  $c$  such that

$$(6) \quad y := \partial_t u \geq c > 0 \quad \text{in } [-a, a] \times [\xi, T(\sigma, \varphi)).$$

Now, set  $d(t) = \exp(-Mt)$  with  $M > 1$  sufficiently large to be determined later and  $k(u) = u^p + u^3$  and introduce

$$J = \partial_t u - \delta d(t)k(u),$$

where  $\delta > 0$  is sufficiently small such that

$$(7) \quad J(\cdot, \xi) \geq 0 \quad \text{in } [-a, a]$$

in view to (6). By classical regularity results,  $J \in C^{2,1}([-a, a] \times [\xi, T(\sigma, \varphi)))$ , see e.g.[5], and  $J$  satisfies the boundary condition

$$B_\sigma(J) = B_\sigma(y) - \delta dk'(u)B_\sigma(u) - \sigma \delta d'k(u) = \sigma \delta \exp(-Mt)k(u) \geq 0.$$

Moreover,  $J$  fulfills

$$\partial_t J - \Delta J + u \partial_x J - (pu^{p-1} - \partial_x u)J = \delta dH(u) \quad \text{in } [-a, a] \times [\xi, T(\sigma, \varphi)),$$

where

$$H(u) := pu^{p-1}k(u) - k'(u)u^p + k''(u)(\partial_x u)^2 - \frac{d'}{d}k(u) - k(u)\partial_x u.$$

In order to show that  $H(u) \geq 0$ , we prove the inequality

$$(8) \quad \begin{aligned} |\partial_x u|(u^p + u^3) &\leq M(u^p + u^3) + (p-3)u^{p+2} \\ &+ (p(p-1)u^{p-2} + 6u)(\partial_x u)^2. \end{aligned}$$

It is obvious when  $|\partial_x u| \leq M$ . Now, we suppose that  $|\partial_x u| > M$ . In the case where  $u^2 \leq 6|\partial_x u|$ , (8) is fulfilled because  $u^3|\partial_x u| \leq 6u(\partial_x u)^2$  and  $u^p|\partial_x u| \leq p(p-$

$1)u^{p-2}(\partial_x u)^2$  since  $p > 3$ . If  $u^2 > 6|\partial_x u|$ , then we have  $u > \sqrt{6M} = (\alpha - 1)^{\frac{-1}{p-3}}$ , and

$$u^p + u^3 \leq \alpha u^p.$$

(8) is satisfied if

$$\alpha|\partial_x u|u^p \leq (p-3)u^{p+2} + p(p-1)u^{p-2}(\partial_x u)^2$$

which is equivalent to

$$\begin{aligned} \alpha|\partial_x u|u^2 &\leq (p-3)u^4 + p(p-1)(\partial_x u)^2 \\ &\leq \left(\sqrt{p-3}u^2 - \sqrt{p(p-1)}|\partial_x u|\right)^2 + 2\sqrt{p(p-1)(p-3)}u^2|\partial_x u|. \end{aligned}$$

In other words, we just need

$$\alpha \leq 2\sqrt{p(p-1)(p-3)},$$

which is guaranteed by the definition of  $\alpha$  and  $p$ . Thus, (5) is shown.

Finally, for the growth order, it suffices to estimate  $\|u(\cdot, t)\|_\infty$  for  $t \in [\frac{t_0}{2}, T(\sigma, \varphi))$ . For each  $x \in [-a, a]$  the integral

$$\int_t^S \frac{\partial_t u(x, s)}{u^p(x, s)} ds = \int_{u(x, t)}^{u(x, S)} \frac{1}{\eta^p} d\eta$$

converges as  $S \nearrow T(\sigma, \varphi)$ . We conclude

$$\frac{u^{1-p}(x, T(\sigma, \varphi)) - u^{1-p}(x, t)}{1-p} \geq \delta(T(\sigma, \varphi) - t),$$

and

$$u(x, t) \leq (p-1)^{\frac{1}{1-p}} \max \left\{ \delta^{\frac{1}{1-p}}, \left( \frac{2T(\sigma, \varphi)}{t_0} - 1 \right)^{\frac{1}{p-1}} \right\} \frac{1}{(T(\sigma, \varphi) - t)^{1/p-1}},$$

which holds especially at the blow up points. ■

### 3 Blow up points

Let  $p > 2$  and suppose that  $\sigma$  is a constant satisfying

$$(9) \quad \sigma > 0.$$

For the initial values, we require in addition to condition (3)

$$(10) \quad \varphi(x) \geq \varphi(-x) \text{ in } [0, a],$$

and the one bump condition

$$(11) \quad \begin{cases} \varphi'(x) > 0 & \text{in } [-a, x_0), \\ \varphi'(x) < 0 & \text{in } (x_0, a] \end{cases}$$

with some  $x_0 \in (-a, a)$ . Set  $T = T(\sigma, \varphi)$ . Following the proof of Lemma 5.2 of [2], and using an argument by Friedman & McLeod, see Lemma 5.2 from [4], in the case where  $h(u) = u^p$ , we can state

**Lemma 3.1** *There exists a continuous function  $x = s(t)$  such that for  $0 < t < T$*

$$\begin{aligned} \partial_x u(x, t) &> 0 && \text{if } -a \leq x < s(t), \\ \partial_x u(x, t) &< 0 && \text{if } s(t) < x \leq a. \end{aligned}$$

*Proof.* By Lemma 2.1,  $\partial_t u > 0$  on  $\bar{\Omega} \times [0, T)$ . The boundary condition  $\mathcal{B}_\sigma(u) = 0$  with  $\sigma > 0$  shows  $\partial_\nu u < 0$  on  $\partial\Omega \times (0, T)$ , i.e.

$$(12) \quad \partial_x u > 0 \text{ on } \{-a\} \times (0, T) \text{ and } \partial_x u < 0 \text{ on } \{a\} \times (0, T).$$

Moreover, (11) implies

$$\partial_x u > 0 \text{ on } [-a, x_0) \times \{0\} \text{ and } \partial_x u < 0 \text{ on } (x_0, a] \times \{0\}.$$

First, by continuity of the solution  $u$ , there are two relatively open subsets  $A_+$  and  $A_-$  of  $\bar{\Omega} \times [0, T)$  such that

1.  $A_+ \subseteq \{\partial_x u > 0\}$  and  $A_- \subseteq \{\partial_x u < 0\}$ .
2.  $A_+$  and  $A_-$  are connected.
3. the parabolic boundary  $\bar{\Omega} \times \{0\} \cup \partial\Omega \times (0, T)$  belongs to  $\partial A_+ \cup \partial A_- \cup \{x_0\}$ .
4.  $A_+$  and  $A_-$  are maximal with respect to the properties 1. - 3.

We shall show that  $A_- = \{\partial_x u < 0\}$  and  $A_+ = \{\partial_x u > 0\}$ . Recall that  $u \in \mathcal{C}^{3,1}(\bar{\Omega} \times [0, T))$ , see [5]. Thus,  $y := \partial_x u \in \mathcal{C}^{2,1}(\bar{\Omega} \times [0, T))$  and

$$\begin{cases} \partial_t y = \Delta y - y^2 - u \partial_x y + p u^{p-1} y & \text{in } \bar{\Omega} \times [0, T), \\ \mathcal{B}_\sigma(y) = 0 & \text{on } \partial\Omega \times [0, T), \\ y(\cdot, 0) = \varphi' & \text{in } \bar{\Omega}. \end{cases}$$

For  $0 < \tau < T$ , set

$$\Omega_\tau := \bar{\Omega} \times [0, \tau).$$

Let  $Q^-$  denote a connected component of  $\{\partial_x u < 0\} \cap \Omega_\tau$  and prove that  $Q^- \subseteq A_-$ . We first show that  $\partial Q^-$  and the parabolic boundary of  $\Omega_\tau$  meet at least in one point different from  $\{x_0\}$ . For that purpose, suppose that

$$\partial Q^- \cap \left( \bar{\Omega} \times \{0\} \cup \partial\Omega \times [0, \tau) \right) \subseteq \{x_0\}.$$

It yields  $y \equiv 0$  on  $\partial Q^- \cap \Omega_\tau$ . Moreover, by definition of  $Q^-$  we have

$$\begin{cases} \partial_t y \leq \Delta y - u \partial_x y & \text{in } Q^-, \\ y \leq 0 & \text{on } \partial Q^-. \end{cases}$$

Since  $y$  attains its maximum 0 on  $\partial Q^-$ , the strong maximum principle from [7] implies  $y \equiv 0$  in  $Q^-$ , which is impossible. Clearly,  $Q^- \cap A_- \neq \emptyset$ , which implies  $A_- \cup Q^- = A_-$  by maximality of  $A_-$ . Now, for a connected component  $Q^+$  of  $\{\partial_x u > 0\} \cap \Omega_\tau$ , suppose that

$$\partial Q^+ \cap \left( \overline{\Omega} \times \{0\} \cup \partial \Omega \times [0, \tau) \right) \subseteq \{x_0\}.$$

We still have  $y \equiv 0$  on  $\partial Q^+ \cap \Omega_\tau$ , which implies that the interior of the set  $P^+ := Q^+ \setminus \{pu^{p-1} - y < 0\}$  is not empty. Then  $y$  satisfies

$$\begin{cases} \partial_t y \geq \Delta y - u \partial_x y + y(pu^{p-1} - y) \geq \Delta y - u \partial_x y & \text{in } P^+, \\ y \geq 0 & \text{on } \partial P^+. \end{cases}$$

Since  $y$  attains its minimum 0 on  $\partial Q^+ \subseteq \partial P^+$ , the strong minimum principle from [7] again, leads to  $y \equiv 0$  in  $P^+$ , in contradiction with the definition of  $P^+$ . Thus, we can conclude that  $\{\partial_x u > 0\} = A_+$ .

Then, since  $\{\partial_x u > 0\}$  and  $\{\partial_x u < 0\}$  are connected, for  $(x^+, t) \in \{\partial_x u > 0\}$  and  $(x^-, t) \in \{\partial_x u < 0\}$  with  $0 < t < T$ , we have  $x^+ < x^-$ . Furthermore, we can prove that for all  $\tilde{x}$  such that  $(\tilde{x}, t) \in \{\partial_x u = 0\}$ ,  $x^+ < \tilde{x} < x^-$ . Indeed, for  $x_1 < x_2 < x_3$  and  $s \in (0, T)$  with  $(x_1, s)$  and  $(x_3, s)$  belonging to  $\{\partial_x u > 0\}$  and  $(x_2, t) \in \{\partial_x u = 0\}$ , we can choose  $x_1, x_3, s$  and  $r \in (0, s)$  such that  $[x_1, x_3] \times [r, s] \subseteq \{\partial_x u > 0\}$ . For  $x_1$  and  $x_3$  sufficiently close to  $x_2$  and  $r$  sufficiently close to  $s$ , we have  $pu^{p-1} - y \geq 0$ , and we obtain

$$\begin{cases} \partial_t y \geq \Delta y - u \partial_x y & \text{in } [x_1, x_3] \times [r, s], \\ y \geq 0 & \text{on } \{x_1, x_3\} \times [r, s] \cup [x_1, x_3] \times \{r\}. \end{cases}$$

Thus,  $y$  attains its minimum in  $(x_2, s)$  and the strong minimum principle leads to  $y \equiv 0$  in  $[x_1, x_3] \times [r, s]$ , which is impossible. In the same way, points of the form  $(x_1, s)$  and  $(x_3, s)$  with  $x_1 < x_2 < x_3$  and  $s \in (0, T)$  with  $(x_1, s)$  and  $(x_3, s)$  belonging to  $\{\partial_x u < 0\}$  and  $(x_2, t) \in \{\partial_x u = 0\}$  can be excluded.

Finally, the analytic non linearity implies the analyticity of the function  $u(\cdot, t)$ , and, if we consider  $x_1, x_2 \in \overline{\Omega}$  and  $s \in [0, T)$  such that  $\partial_x u(\cdot, s) = 0$  in  $[x_1, x_2]$ , we obtain  $\partial_x u(\cdot, s) = 0$  in  $\overline{\Omega}$ , in contradiction with (12).  $\blacksquare$

Now, we can state the following

**Theorem 3.2** *Under Conditions (9)–(11), for each  $(x, t) \in [0, a] \times [0, T)$  it holds*

$$u(x, t) \geq u(-x, t).$$



*Proof.* Set  $v(x, t) := u(-x, t)$  in  $[0, a] \times [0, T)$  and introduce the function  $y$  defined by  $y(x, t) := u(x, t) - v(x, t)$ . Then  $y$  is a solution belonging to  $\mathcal{C}([0, a] \times [0, T)) \cap \mathcal{C}^{2,1}([0, a] \times ](0, T))$  of the problem

$$\begin{cases} \partial_t y = \partial_x^2 y + v \partial_x y + \delta y - (u + v) \partial_x u & \text{in } [0, a] \times (0, T), \\ y(x, 0) \geq 0 & \text{in } [0, a], \\ \mathcal{B}_\sigma(y) = 0 & \text{on } \{a\} \times (0, T), \\ y = 0 & \text{on } \{0\} \times (0, T), \end{cases}$$

with

$$\delta(x, t) = \frac{u^p(x, t) - u^p(-x, t)}{u(x, t) - u(-x, t)}.$$

Now, suppose that there exists a point  $(\hat{x}, \hat{t}) \in [0, a] \times (0, T)$  with

$$(13) \quad y(\hat{x}, \hat{t}) < 0,$$

then  $y(\cdot, \hat{t})$  attains a negative minimum at  $(\tilde{x}, \tilde{t}) \in [0, a] \times (0, T)$  such that

$$(14) \quad \begin{cases} u(\tilde{x}, \tilde{t}) < v(\tilde{x}, \tilde{t}) \\ \partial_x u(\tilde{x}, \tilde{t}) = \partial_x v(\tilde{x}, \tilde{t}). \end{cases}$$

If  $\tilde{x} > s(\tilde{t})$ , then, by Lemma 3.1,  $\partial_x u(\tilde{x}, \tilde{t}) < 0$ . In a neighbourhood  $V$  of  $(\tilde{x}, \tilde{t})$  in which  $\partial_x u < 0$ , we have

$$\partial_t y - \partial_x^2 y - v \partial_x y - \delta y \geq 0.$$

The comparison principle in [1] leads to  $y \geq 0$ , in contradiction with (14). On the other hand, if  $\tilde{x} = s(\tilde{t})$  we have

$$y(\tilde{x}, \tilde{t}) = u(\tilde{x}, \tilde{t}) - u(-\tilde{x}, \tilde{t}) \geq 0,$$

in contradiction with (13). Finally, for  $0 \leq \tilde{x} < s(\tilde{t})$ , we have  $\partial_x u(\tilde{x}, \tilde{t}) > 0$  and  $\partial_x u(-\tilde{x}, \tilde{t}) > 0$  since  $-s(\tilde{t}) < -\tilde{x} \leq 0 < s(\tilde{t})$ . Then we conclude that

$$\partial_x y(\tilde{x}, \tilde{t}) = \partial_x u(\tilde{x}, \tilde{t}) + \partial_x u(-\tilde{x}, \tilde{t}) > 0,$$

again, in contradiction with (14). ■

The last two results immediately yield the following.

**Corollary 3.3** *Under the aforementioned hypotheses,  $s(t) \geq 0$  and*

$$\partial_x u(x, t) > 0 \quad \text{in } [-a, 0) \times (0, T).$$

**Definition 3.4**  $s^- = \liminf_{t \rightarrow T} s(t)$  and  $s^+ = \limsup_{t \rightarrow T} s(t)$

The two following theorems will show that blow up can only occur in the interval  $[s^-, s^+]$ .

**Theorem 3.5** *Under the aforementioned assumptions, no point in  $[-a, s^-)$  is a blow up point.*

*Proof.* By Corollary 3.3,  $s^- \geq 0$ . Suppose  $\beta \in [-a, s^-)$  and choose  $T_0 < T$  sufficiently close to  $T$  such that  $s(t) > \beta$  for  $T_0 \leq t < T$ . Introduce

$$R = [-a, \beta] \times (T_0, T),$$

and

$$J = \partial_x u - \varepsilon dk$$

with

$$\begin{aligned} d(x) &= (x - \beta)^n, \quad n \in \mathbb{N}^* \text{ even,} \\ k(u) &= u^q, \quad q = p - 1, \end{aligned}$$

and  $\varepsilon > 0$  sufficiently small such that

$$(15) \quad J \geq 0 \text{ in } [-a, \beta] \times \{T_0\},$$

and

$$(16) \quad u^q + \frac{n(n-1)}{(x-\beta)^2} + \frac{n}{|x-\beta|} u \geq \varepsilon u^{q-1} [(x-\beta)^n u + 2nq|x-\beta|^{n-1}].$$

Condition (15) is due to Lemma 3.1, where as (16) is a consequence of the assumptions on  $p, q$  and  $n$ . Moreover  $J(\beta, \cdot) > 0$  in  $[T_0, T)$  by Lemma 3.1, since  $d(\beta) = 0$ . Set  $f(u) := u^p$ , (16) implies that  $H$  defined by

$$\begin{aligned} H(u) &:= f'(u)k(u) - f(u)k'(u) - \varepsilon (dk^2(u) - 2d'k(u)k'(u)) \\ &\quad - \frac{d'}{d}k(u)u + \frac{d''}{d}k(u) + k''(u)(\partial_x u)^2 + \frac{1}{\varepsilon d}(\partial_x u)^2 \end{aligned}$$

satisfies  $H(u) \geq k''(u)(\partial_x u)^2 + \frac{1}{\varepsilon d}(\partial_x u)^2 \geq 0$  since  $u$  is strictly positive in  $R$ , as well as  $k''$  for  $q > 1$ . Recall that  $u > 0$  for  $t > 0$  by the comparison principle of [1] and by Lemma 2.1. Moreover,  $J$  satisfies on  $\{-a\} \times (T_0, T)$ ,

$$\mathcal{B}_\sigma(J) = \mathcal{B}_\sigma(\partial_x u) - \varepsilon dk'(u)\mathcal{B}_\sigma(u) - \varepsilon d'k(u) = -\varepsilon n(-a - \beta)^{n-1} u^q(-a, t)$$

since  $\sigma$  is a constant. As  $\Omega$  is an interval of the real line, classical interior regularity results, see e.g. [5], imply that  $u \in \mathcal{C}^{3,2}([-a, \beta] \times [T_0, T))$ . Thus,  $J$  belongs to  $\mathcal{C}^{2,2}([-a, \beta] \times [T_0, T))$  and is a solution of

$$\left\{ \begin{array}{ll} \partial_t J - \Delta J + u \partial_x J + K(u)J = \varepsilon dH(u) \geq 0 & \text{in } [-a, \beta] \times (T_0, T), \\ \mathcal{B}_\sigma(J) \geq 0 & \text{on } \{-a\} \times (T_0, T), \\ J(\cdot, T_0) \geq 0 & \text{in } [-a, \beta], \\ J \geq 0 & \text{on } \{\beta\} \times (T_0, T), \end{array} \right.$$

where  $K(u) = J - f'(u) + 2\varepsilon dk(u) - 2\varepsilon d'k'(u)$ . By the comparison principle from [1] we conclude that  $J \geq 0$  in  $[-a, \beta] \times [T_0, T)$ , in other words

$$\frac{\partial_x u}{k(u)} \geq \varepsilon d.$$

Integration between  $x$  and  $y$  with  $-a \leq x < y < \beta$  and the parity of  $n$  yield

$$u^{1-q}(x, t) - u^{1-q}(y, t) \geq \varepsilon \frac{q-1}{n+1} [(y-\beta)^{n+1} - (x-\beta)^{n+1}] > 0.$$

Finally, suppose that  $x \in [-a, \beta)$  is a blow up point. Using  $1-q < 0$ , we conclude that  $u^{1-q}(y, t) < 0$  for  $y \in (x, \beta)$ , and  $t$  sufficiently close to  $T$ , which is impossible.  $\blacksquare$

**Theorem 3.6** *Under the aforementioned assumptions, no point of  $(s^+, a]$  is a blow up point.*

*Proof.* We can follow the idea of the proof of Theorem 3.5. Suppose that  $s^+ < a$  and  $\gamma \in (s^+, a]$ . Choose  $T_0 < T$  sufficiently close to  $T$  such that  $s(t) < \gamma$  for  $T_0 \leq t < T$ . Set  $R = [\gamma, a] \times (T_0, T)$  and

$$J = \partial_x u + \varepsilon dk$$

with

$$d(x) = e^{\frac{1}{\gamma-x}},$$

$$k(u) = u^q, \quad 2 < q < p,$$

and  $\varepsilon > 0$  sufficiently small such that

$$(17) \quad J(\cdot, T_0) \leq 0 \text{ in } [\gamma, a].$$

Condition (17) is possible by Lemma 3.1. Using  $f(u) := u^p$ , set

$$\begin{aligned} H(u) &= f'(u)k(u) - f(u)k'(u) + \varepsilon dk^2(u) - 2\varepsilon d'k(u)k'(u) - \frac{d'}{d}k(u)u \\ &\quad + \frac{d''}{d}k(u) + (\partial_x u)^2 k''(u) \\ &= (p-q)u^{p+q-1} + \frac{u^{q+1}}{(\gamma-x)^2} + \left( \frac{1}{(\gamma-x)^4} - \frac{2}{(\gamma-x)^3} \right) u^q \\ &\quad + \varepsilon e^{\frac{-1}{\gamma-x}} \left( \frac{2qu^{2q-1}}{(\gamma-x)^2} + u^{2q} \right) + q(q-1)(\partial_x u)^2 u^{q-2}. \end{aligned}$$

Then  $H(u) \geq 0$  since  $p > q > 2$ . Moreover,  $J$  satisfies on  $\{a\} \times (T_0, T)$  the dynamical boundary condition,

$$\mathcal{B}_\sigma(J) = \mathcal{B}_\sigma(\partial_x u) + \varepsilon dk'(u)\mathcal{B}_\sigma(u) + \varepsilon d'k(u) = \frac{-\varepsilon}{(\gamma-a)^2} e^{\frac{1}{\gamma-a}} u^q(a, t)$$

since  $\sigma$  is a constant. Thus  $J \in \mathcal{C}^{2,2}([\gamma, a] \times [T_0, T])$  is a solution of

$$\begin{cases} \partial_t J - \Delta J + u \partial_x J + K(u)J = -\varepsilon dH(u) \leq 0 & \text{in } (\gamma, a] \times (T_0, T), \\ \mathcal{B}_\sigma(J) \leq 0 & \text{on } \{a\} \times (T_0, T), \\ J(\cdot, T_0) \leq 0 & \text{on } [\gamma, a], \\ J(\gamma, \cdot) \leq 0 & \text{on } (T_0, T), \end{cases}$$

where  $K(u) := J - f'(u) - 2\varepsilon dk(u) + 2\varepsilon d'k'(u)$ . By the comparison principle of [1],  $J \leq 0$  in  $[\gamma, a] \times [T_0, T]$ . By integrating as above, we obtain  $u^{1-q}(y, t) - u^{1-q}(x, t) > 0$  for  $\gamma < x < y \leq a$ . Thus if  $y \in (\gamma, a]$  is a blow up point,  $u^{1-q}(x, t) < 0$  for  $x \in (\gamma, y)$  and  $t$  sufficiently close to  $T$ , in contradiction to the positivity of  $u$ . Thus,  $u$  remains bounded in  $R$ .  $\blacksquare$

In fact, it will be shown that  $s^- = s^+$ . In other words, blow up can only occur at a singleton.

**Theorem 3.7** *Under Conditions (3) (9) (10) (11), the blow up set of Problem (1) consists at most of a single point.*

*Proof.* Theorem 3.5 and Theorem 3.6 imply that blow up can only occur in  $[s^-, s^+]$ . It remains to show that  $s^- = s^+$ . Suppose that  $s^+ > s^-$  and that  $u$  blows up at  $z_1 \in [s^-, s^+]$ . Set

$$y_1 = s^- - \varepsilon,$$

with

$$(18) \quad 0 < \varepsilon < \frac{s^+ - s^-}{2}.$$

By Theorem 3.5, there exists a constant  $C_0 > 0$  such that

$$(19) \quad u(y_1, t) \leq C_0 \quad \text{in } [0, T].$$

As  $u$  explodes at  $z_1$ , there is  $\tau_1$  sufficiently close to  $T$  such that  $u(z_1, t) > C_0$  for any  $\tau_1 < t < T$ . Moreover, by Lemma 3.1,

$$u(z_1, t) \leq \max_{\bar{\Omega}} u(\cdot, t) = u(s(t), t) \quad \text{for all } 0 < t < T.$$

Thus, by Definition 3.4 and Lemma 3.1, there exists  $\tau \in (0, T)$  with  $T - \tau$  sufficiently small such that for  $y_2 = s(\tau) > s^+ - \varepsilon$  and for  $\alpha = \frac{y_1 + y_2}{2}$  we have

$$\begin{aligned} u(y_2, \tau) &> C_0, \\ u(x, \tau) &\leq u(2\alpha - x, \tau) \quad \text{for } x \in [y_1, \alpha], \\ u(x, \tau) &< u(2\alpha - x, \tau) \quad \text{for } x \in [y_1, \alpha). \end{aligned}$$

Then (19) and Lemma 2.1 yield

$$u(y_1, t) < u(y_2, t) \text{ for } \tau \leq t < T.$$

Set  $v(x, t) = u(2\alpha - x, t)$  in  $[y_1, \alpha] \times [\tau, T)$  and

$$w(x, t) = v(x, t) - u(x, t).$$

Then  $w \in \mathcal{C}^{2,1}([y_1, \alpha] \times [\tau, T))$  is a solution of

$$\begin{cases} \partial_t w = \Delta w + v \partial_x w + \delta w + (u + v) \partial_x u & \text{in } (y_1, \alpha) \times (\tau, T), \\ w(\cdot, \tau) \geq 0 & \text{in } [y_1, \alpha], \\ w > 0 & \text{on } \{y_1\} \times (\tau, T), \\ w = 0 & \text{on } \{\alpha\} \times (\tau, T), \end{cases}$$

where we have set

$$\delta(x, t) = \frac{v^p(x, t) - u^p(x, t)}{v(x, t) - u(x, t)}.$$

Suppose that

$$(20) \quad w(\hat{x}, \hat{t}) < 0$$

at some  $(\hat{x}, \hat{t}) \in (y_1, \alpha) \times (\tau, T)$ . Then there exists a point  $(\tilde{x}, \tilde{t}) \in (y_1, \alpha) \times (\tau, T)$  at which  $w(\cdot, \tilde{t})$  takes a negative minimum. Thus,

$$(21) \quad \begin{cases} v(\tilde{x}, \tilde{t}) < u(\tilde{x}, \tilde{t}), \\ \partial_x v(\tilde{x}, \tilde{t}) = \partial_x u(\tilde{x}, \tilde{t}). \end{cases}$$

If  $\alpha > \tilde{x} > s(\tilde{t})$  then  $\partial_x u(\tilde{x}, \tilde{t}) < 0$  and  $\partial_x u(2\alpha - \tilde{x}, \tilde{t}) < 0$  since  $2\alpha - \tilde{x} > \alpha > \tilde{x} > s(\tilde{t})$ . Thus,

$$\partial_x w = -\partial_x u(2\alpha - \tilde{x}, \tilde{t}) - \partial_x u(\tilde{x}, \tilde{t}) > 0,$$

in contradiction with (21). Next, recall that  $\tilde{x}$  is the unique zero of  $\partial_x u(\cdot, \tilde{t})$ , by Lemma 3.1. Thus,  $\alpha > \tilde{x} = s(\tilde{t})$  would lead to another zero since  $2\alpha - \tilde{x} \neq \tilde{x}$ . Finally, suppose  $y_1 \leq \tilde{x} < s(\tilde{t})$ , then  $\partial_x u(\tilde{x}, \tilde{t}) > 0$ . Let  $V$  a neighborhood of  $(\tilde{x}, \tilde{t})$  in which  $\partial_x u > 0$ . In  $V$ , we have

$$\partial_t w - \Delta w - v \partial_x w - \delta w = (u + v) \partial_x u \geq 0,$$

and comparison principle of [1] leads to  $w \geq 0$ , in contradiction to (20).

Thus, we have shown that  $w \geq 0$ . For any  $t \in (\tau, T)$ , the maximum of  $u(\cdot, t)$  in  $[y_1, y_2]$  can not be attained for  $x \in [y_1, \alpha)$ . As  $\partial_x u$  vanishes at  $s(t)$  by Lemma 3.1,  $\alpha \leq s(t)$  for  $\tau < t < T$ . Thus, by Definition 3.4

$$s^- = \liminf_{t \rightarrow T} s(t) \geq \alpha = \frac{y_1 + y_2}{2} \geq \frac{s^- + s^+}{2} - \varepsilon$$

and  $s^- \geq s^+ - 2\varepsilon$ , in contradiction with (18). This permits to conclude that  $s^- = s^+$ . ■

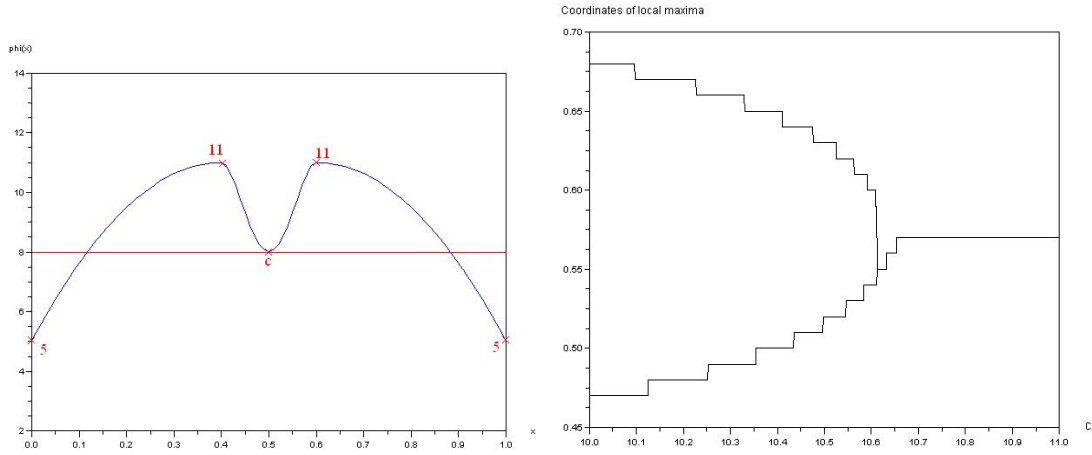


Figure 1: Initial data  $\varphi$  and the bifurcation of local maxima

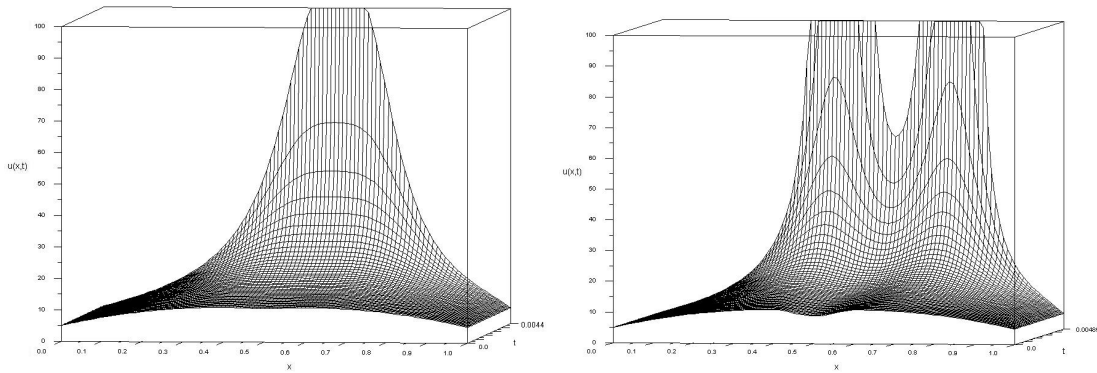


Figure 2: Convergence to one bump for  $c = 10.7$  and conservation of two bumps for  $c = 9$

## 4 A numerical example

If the initial condition displays two bumps or more, in general, the bumps can coalesce or not, as in the pure reaction–diffusion case. The following example exhibits numerically conservation of exactly two initial bumps until the blow up time. We use a consistent finite difference scheme for  $p = 3$ ,  $\sigma = 100$ , with spatial mesh width  $k = 1/100$  and temporal mesh width  $h = \frac{k^2}{4}$  and initial data

$$\varphi(x) = \begin{cases} 5 + 6f(x) & \text{for } x \in [0, \frac{2}{5}] \\ 11 - 10000(11 - c)(x - \frac{2}{5})^2(x - \frac{3}{5})^2 & \text{for } x \in [\frac{2}{5}, \frac{3}{5}] \\ 5 + 6f(1 - x) & \text{for } x \in [\frac{3}{5}, 1] \end{cases}$$

with  $f(x) = 5x - \frac{25}{4}x^2$ . Note that the parameter  $c$  denotes just the value of the local minimum in the middle, see Fig. 1 for the case  $c = 8$ . The figure on the r.h.s. of Fig. 1 displays the maxima coordinates in  $[0, 1]$  before blowing up. The left part of Fig. 2 exhibits coalescence into one bump for  $c = 10.7$  when approaching the blow up time, while the right part displays conservation of the two bumps for  $c = 9$ .

## References

- [1] **J. von Below and C. De Coster**, *A qualitative theory for parabolic problems under dynamical boundary conditions*, Journal of Inequalities and Applications **5** (2000) 467–486.
- [2] **J. von Below and G. Pincet Mailly**, *Blow up for reaction diffusion equations under dynamical boundary conditions*, Comm. Partial Differential Equations, **28** (2003), 223–247.
- [3] **J. von Below and G. Pincet Mailly**, *Blow up for some nonlinear parabolic problems with convection under dynamical boundary conditions*, Discr. Cont. Dyn. Systems **Supplement** (2007), 1031–1041 .
- [4] **A. Friedman and B. McLeod**, *Blow up of positive solutions of semilinear heat equations*, Indiana Univ. Math. J. **34** (1985) 425–447.
- [5] **O.A. Ladyženskaya, V.A. Solonnikov and N.N. Uraltseva**. *Linear and quasilinear equations of parabolic type*, Trans. of Math. Monographs 23, A.M.S., Providence, R.I. (1968).
- [6] **G. Pincet Mailly**, *Explosion des solutions de problèmes paraboliques sous conditions au bord dynamiques*, Thèse doctorale à l’Université du Littoral Côte d’Opale, 2001.
- [7] **W. Walter**, *Differential and integral inequalities*, Springer Verlag, Berlin, 1970.