



HAL
open science

Nanoscale thermal conductivity of Kapton-derived carbonaceous materials

K. Kondratenko, D. Hourlier, Dominique Vuillaume, S. Lenfant

► **To cite this version:**

K. Kondratenko, D. Hourlier, Dominique Vuillaume, S. Lenfant. Nanoscale thermal conductivity of Kapton-derived carbonaceous materials. *Journal of Applied Physics*, 2022, 131 (6), pp.065102. 10.1063/5.0074407 . hal-03616405

HAL Id: hal-03616405

<https://hal.science/hal-03616405>

Submitted on 2 Jan 2024

HAL is a multi-disciplinary open access archive for the deposit and dissemination of scientific research documents, whether they are published or not. The documents may come from teaching and research institutions in France or abroad, or from public or private research centers.

L'archive ouverte pluridisciplinaire **HAL**, est destinée au dépôt et à la diffusion de documents scientifiques de niveau recherche, publiés ou non, émanant des établissements d'enseignement et de recherche français ou étrangers, des laboratoires publics ou privés.

RESEARCH ARTICLE | FEBRUARY 09 2022

Nanoscale thermal conductivity of Kapton-derived carbonaceous materials

K. Kondratenko   ; D. Hourlier   ; D. Vuillaume   ; S. Lenfant  



J. Appl. Phys. 131, 065102 (2022)

<https://doi.org/10.1063/5.0074407>



CrossMark



APL Quantum
Bridging fundamental quantum research with technological applications

Now Open for Submissions
No Article Processing Charges (APCs) through 2024

Submit Today



Nanoscale thermal conductivity of Kapton-derived carbonaceous materials

Cite as: J. Appl. Phys. 131, 065102 (2022); doi: 10.1063/5.0074407

Submitted: 8 October 2021 · Accepted: 28 January 2022 ·

Published Online: 9 February 2022



View Online



Export Citation



CrossMark

K. Kondratenko,^{a)} D. Hourlier, D. Vuillaume, and S. Lenfant^{a)}

AFFILIATIONS

Institut d'Electronique de Microélectronique et de Nanotechnologie (IEMN), CNRS, Avenue Poincaré, 59652 Villeneuve d'Ascq, France

^{a)}Authors to whom correspondence should be addressed: kirill.kondratenko@iemn.fr and stephane.lenfant@iemn.fr

ABSTRACT

This study exploits the nanoscale resolution of scanning thermal microscopy (SThM) to reveal inhomogeneous nature of thermal properties of carbon-derived materials issued from thermal conversion of the most commonly known polyimide, Kapton®. This information is otherwise inaccessible if conventional thermal characterization techniques are used due to their limited spatial resolution. Kapton films were pyrolyzed in an inert atmosphere to produce carbon-based residues with varying degree of conversion to free sp² disordered carbon. The thermal conductivity of carbon materials ranges from 0.2 to 2 W m⁻¹ K⁻¹, depending on the temperature of the carbonization process (varied between 500 and 1200 °C). For quantitative measurements of thermal conductivity, the Null Point SThM (NP-SThM) technique is used in order to avoid unwanted effects as the parasitic heat flows through the air and the probe cantilever. It was found that NP SThM data for bulk materials are in excellent agreement with results obtained through more traditional techniques, namely, photo-thermal radiometry, flash laser analysis, and micro-Raman thermometry. This allowed us to use the NP-SThM technique to differentiate structural heterogeneities or imperfections at the surface of the pyrolyzed Kapton on the basis of the measured local thermal conductivity.

Published under an exclusive license by AIP Publishing. <https://doi.org/10.1063/5.0074407>

I. INTRODUCTION

With increasing degree of integration and downscaling of components, thermal management becomes one of the key parameters of improving performance and reliability of electronic devices, especially with the advent of 3D integrated circuits.¹ Carbon-based materials have demonstrated promising properties of heat transport with a thermal conductivity surpassing 3000 W m⁻¹ K⁻¹ for some allotropic variants.² Carbon nanotubes³ and graphene⁴ are proposed as high performance materials for thermal vias and heat spreaders. Polyimide films (commercialized as Kapton®) have aroused interest as materials for high-tech industries, owing to their mechanical properties, high thermal stability, favorable dielectric properties, chemical inertness, and compatibility with semiconducting materials. Today, Kapton film continues to draw attention as a precursor for materials consisting of disordered sp² carbon obtained upon treatment at 600 °C and higher, which further forms graphitic-like materials upon even higher temperatures (greater than 1000 °C).⁵ This treatment, if performed in an inert atmosphere, results in the thermal decomposition of polyimide accompanied by structural transformation,⁶ shrinkage, and mass reduction due to the elimination of heteroatoms. The resulting product is a residue mostly consisting of carbon.⁷

These materials are potential candidates for terahertz absorbers⁸ used as detectors and shielding materials, as well as for heat dissipating applications.

It has been shown that the thermal conductivity can be changed in a wide range of almost four orders of magnitude by various heat treatments, from 0.2 W m⁻¹ K⁻¹ for untreated Kapton up to 1700 W m⁻¹ K⁻¹ for samples with high degree of graphitization.⁹ This makes carbonized Kapton a convenient reference material for several thermal characterization techniques, which was recently exploited by our group in a study of Kapton-derived carbonaceous materials with three different techniques:¹⁰ laser flash analysis, photo-thermal radiometry, and Raman thermometry.

Scanning thermal microscopy (SThM) is a known method for the characterization of local thermal conductivity of organic thin films,^{11–13} nanoobjects,¹⁴ 2D materials,¹⁵ 1D materials,¹⁶ monolayers,¹⁷ and down to single molecules.^{18–20} In this technique, the thin film resistor in the tip of a scanning probe microscope is essentially utilized as a thermometer that allows obtaining decananometric lateral resolution.²¹ In an active mode SThM, the resistive probe is heated by DC bias, which allows not only to measure the temperature (which may be useful in investigating samples with integrated

02 January 2024 11:56:28

heat sources) but also to induce heat flow from the tip into the sample under study. This can then be used to find the thermal conductance of materials.

SThM requires little or no sample preparation in contrast to other traditional techniques, such as 3 ω Joule heating which requires the deposition of electrodes,²² sometimes of unconventional shapes.²³ Other techniques that utilize optical excitation require additional steps as well: laser flash analysis requires the deposition of a graphite layer to absorb the laser light and to emit the infrared radiation for detection.²⁴ In time-domain thermoreflectance measurements (TDTR), a thin metal film is usually deposited for similar reasons.^{25,26} Even though these techniques provide accurate results for bulk materials, submicron lateral resolution cannot be achieved.

In order to obtain reliable quantitative information on thermal conductivity, the measurement of the heat flow from the SThM tip to the sample is of considerable importance.²⁷ This measurement is complicated due to the parasitic heat flow through air and the SThM probe cantilever, which are difficult to estimate experimentally. Kim *et al.* have developed a calibration procedure (Null Point SThM)²⁸ for the SThM measurements by using reference materials of known thermal conductivity. In this study, we used the NP SThM technique to probe nanoscale inhomogeneities of the thermal conductivity of Kapton-derived materials.

II. EXPERIMENTAL

We prepared our samples from commercially available yellow-orange Kapton HN polyimide films of thickness 125 μm (Du Pont de Nemours, France) following a procedure previously described elsewhere.⁸ Carbonization of Kapton results in a slight decrease in the film thickness (reaching 117 μm for the sample treated at 1200 $^{\circ}\text{C}$). The thermal characterization of carbonized Kapton was performed on a Bruker Dimension ICON with the Anasys SThM application module in a DC mode. Measurements were performed in an air-conditioned environment at $T = 22.5^{\circ}\text{C}$ and relative humidity of 35%–40%. Kelvin NanoTechnology (KNT) SThM probes were used, the heating element consists of a thin Pd film resistor inserted in a Wheatstone bridge circuit with DC bias varied between 0.7 and 1.2 V.

Thermal conductivity of Kapton-derived carbonaceous materials was obtained by Null Point (NP) SThM,²⁸ which allows removing of the parasitic contribution of heat conduction through the environment. Before contact, the temperature of the tip of SThM probe is influenced by heat losses through air and probe cantilever. Upon physical contact with the sample, the heat flow through the tip-sample interface is added to the total tip heat dissipation. By continuously recording the tip temperature before and during heat exchange with the sample and in conjunction with a careful calibration procedure, this technique provides a quantitative estimate of the thermal conductivity.

III. RESULTS

A. Thermal conductivity by NP SThM

In this protocol, the heated SThM tip (temperature of the tip is controlled by the DC bias of the Wheatstone bridge) is brought

in contact with the surface of the sample by performing a ramp in the Z direction of the scanning probe microscope scanner. At the moment of contact, a rapid temperature change occurs due to the induced heat flow from the heated tip into the sample. This temperature change is recorded as a voltage differential at the output of the Wheatstone bridge of the SThM module, which allows us to obtain a sequence of temperature differential values for different probe temperatures.

We calculate the thermal conductivity κ by using the following relation:²⁸

$$T_C - T_{amb} = \left[\alpha \frac{1}{\kappa} + \beta \right] (T_{NC} - T_C), \quad (1)$$

where T_C is the probe tip temperature at the contact, i.e., when the tip is in thermal equilibrium with the sample surface [visible for $Z - Z_C > 0$ in Fig. 1(a)], T_{NC} is the tip temperature just before contact with the sample surface, T_{amb} is the ambient temperature, the calibration coefficients α and β are related to thermal contact area, i.e., tip and sample geometry as well as tip-sample thermal conductance.²⁸

The values of $T_C - T_{amb}$ are plotted as a function of $T_{NC} - T_C$ and we perform a linear fit of this plot to extract its slope, χ , which is inversely proportional to the thermal conductivity. The thermal conductivity is obtained through prior calibration of the system using reference materials. For this purpose, reference materials are Si wafers (we assume its conductivity to be 148 $\text{W m}^{-1} \text{K}^{-1}$, with the native silicon oxide contribution being negligible²⁸) and borosilicate microscope glass slide ($\kappa = 1.3 \text{ W m}^{-1} \text{K}^{-1}$), see Fig. S1 in the [supplementary material](#).

Since the quantitative estimation of thermal conductivity is extremely sensitive to the calibration parameters, we should consider one of the main sources of error in this type of measurement, which is the variation of surface area of thermal contact between the heated tip and the sample.²⁹ In order to decrease its contribution, one should pay attention to the surface roughness of the sample. In our case, for heat-treated Kapton materials, the root mean square (RMS) surface roughness is in the order of 1 nm (Fig. S2 in the [supplementary material](#)). In an attempt to improve the measurement accuracy, we used a 5 \times 5 grid pattern with a pitch of 100 nm. Figure 1(a) shows an example of data collected for Kapton-derived samples heated at 1200 and 500 $^{\circ}\text{C}$ at 1.1 V Wheatstone bridge bias. Figure 1(b) shows the plots of $T_C - T_{amb}$ vs $T_{NC} - T_C$ corresponding to one grid (25 measurements per Wheatstone bridge bias value) for the same samples obtained during one measurement session. The data for the other temperatures are given in the Fig. S3 in the [supplementary material](#).

B. Local thermal conductivity

The optical micrograph presented in Fig. 3(a) shows the heat treatment induced changes in the Kapton film and reveals the presence of nodules taller than 100 nm [Fig. 3(b)] as shown by the topographic image recorded simultaneously during the SThM scan.

For the local thermal conductivity of the 1200 $^{\circ}\text{C}$ -Kapton-derived materials, measurements were conducted using a high lateral resolution of NP SThM (ca. 100 nm). The topology in the

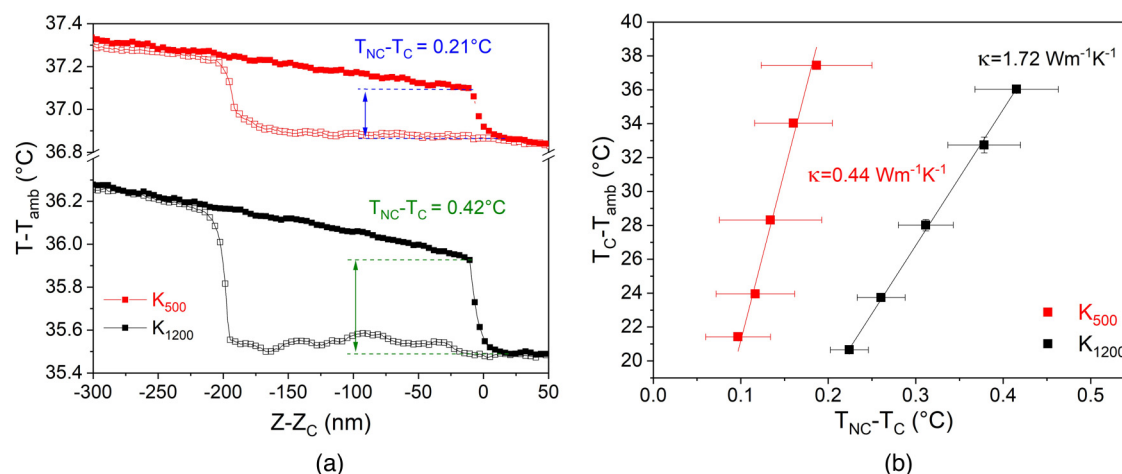


FIG. 1. (a) Example of NP SThM temperature measurement data (tip temperature as a function of scanner displacement in the Z direction): Z_C is a scanner coordinate at contact. Wheatstone bridge voltage is 1.1 V. Solid symbols correspond to the extent of the cantilever, open—to retract. (b) Plot of $T_C - T_{amb}$ as a function of $T_{NC} - T_C$ for samples of Kapton heated at 1200 °C (black) and 500 °C (red), Wheatstone bridge bias was varied between 0.7 and 1.1 V in steps of 0.1 V. Thermal conductivity marked on the figure and calculated from Eq. (1) using calibration parameters: $\alpha = 69.93 \text{ W m}^{-1} \text{ K}^{-1}$ and $\beta = 39.56 \text{ K/K}$ (see Fig. S2 in the supplementary material).

contact mode and the thermal voltage are simultaneously measured and recorded [Figs. 2(b) and 3, respectively]. The nodule is surrounded by grainy features visible in the topological image. The thermal image (Fig. 3) reveals noticeable difference between the nodule and the surrounding area, which prompted us to perform local thermal conductivity measurements. This thermal image alone, however, provides only qualitative information of the thermal conductance of the sample and is not suitable for the calculation of the local thermal conductivity due to heat losses and thermal contact area fluctuation during the surface scan.

NP SThM was performed on selected spots corresponding to the nodule and the flat surface in its proximity in order to obtain quantitative information on the thermal conductivity. Measurements were averaged over a 5×5 grid with a 100 nm pitch (red spots in Fig. 3) in order to decrease the experimental error due to thermal contact area fluctuations. The $T_C - T_{amb}$ vs $T_{NC} - T_C$ plots for the six zones (three on the sample surface and three on the grains) are presented in Fig. 4. We find that the thermal conductivity in zones 1, 2, and 6 approaches to that of the bulk material [$1.83 \pm 0.29 \text{ W m}^{-1} \text{ K}^{-1}$, see Fig. 1(b)], while for the areas near

02 January 2024 11:56:28

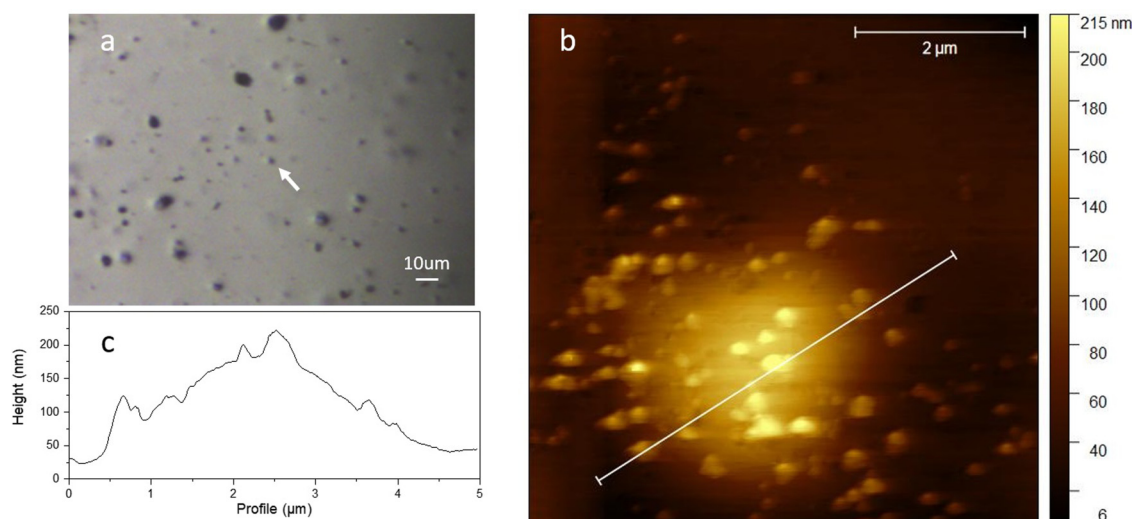


FIG. 2. Topological features of the sample treated at 1200 °C: optical image (a); topography recorded by the SThM tip in the contact mode (b); profile extracted from topographical image (c).

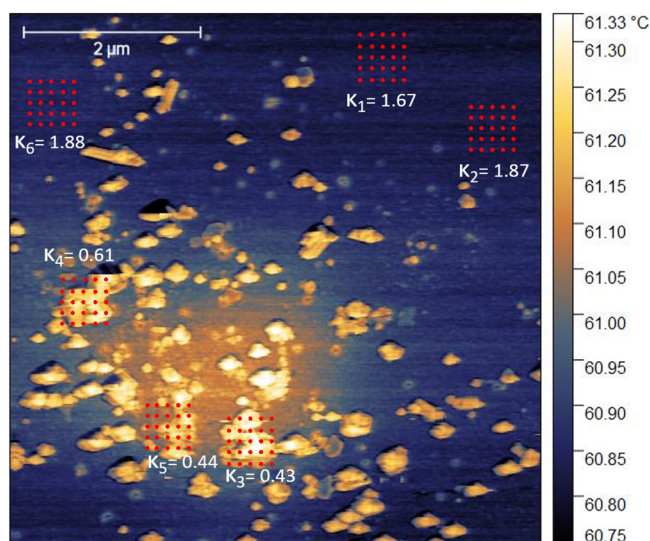


FIG. 3. Thermal image (tip temperature) of the topographic feature presented in Fig. 2. Thermal conductivity values are in $\text{W m}^{-1}\text{K}^{-1}$. Wheatstone bridge voltage is 1.2 V.

the nodule (zones 3, 4, and 5), the value is about 3 to 4 times lower. Higher resolution topographic images (Figs. S4–S6 in the supplementary material) demonstrate comparable RMS roughness for the area on the nodule (0.7 nm) and its proximity (0.6 nm).

C. Comparative analysis of thermal conductivity values

We have compared the results of the NP SThM measurements with those obtained by other techniques.¹⁰ For each sample, the

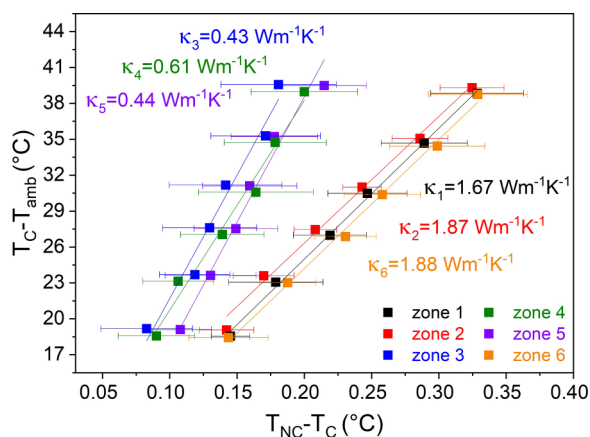


FIG. 4. Plot of $T_C - T_{amb}$ as a function of $T_{NC} - T_C$ for the six zones presented in the Fig. 3. Wheatstone bridge bias was varied between 0.7 and 1.2 V in steps of 0.1 V. Note that a new SThM tip was used for this series of measurements, hence the different calibration coefficients (see Fig. S7 in the supplementary material): $\alpha = 59.71 \text{ W m}^{-1}\text{K}^{-1}$, $\beta = 73.98 \text{ K/K}$.

measurement was performed in five different randomly selected areas with no visible topographical features on the surface in the aforementioned grid pattern. As shown in Fig. 5, the SThM data show excellent agreement with the data obtained by the three other techniques (photothermal radiometry, flash laser analysis, and micro-Raman). The uncertainty of the value increases with the temperature of treatment, which indicates that the thermal treatment results in a heterogeneous material, as we have previously demonstrated, which may be assigned to local variations of carbon graphitization³⁰ of polyimide.

IV. DISCUSSION

Thermal conductivity values derived from NP SThM data are validated by comparison with data obtained for the bulk material by photothermal radiometry, flash laser analysis, and micro-Raman thermometry. For samples heated above 900 °C, a more broad distribution of values (larger error bars) is observed, consistent with previous reports in which escape of nitrogen containing species⁸ from Kapton films at this temperature has been shown. These transformations lead to a spatial disorder of the chemical composition occurring on a mesoscopic scale, which makes the experimental data more distributed. If we compare it with the experimental error obtained for micro-Raman measurements,¹⁰ we may suggest that the lower resolution of this technique (laser spot diameter of $1.29 \mu\text{m}$) does not allow discerning local distribution of thermal conductivity in contrast to SThM.

The increase of the thermal conductivity by a factor ca. 10 (upon the thermal treatment of the Kapton film) is related to the gradual increase in the concentration of sp^2 carbon in the film and a concomitant increase in the electrical conductivity as reported in the work of Venkatchalam *et al.*⁸ Above 500 °C, the electronic contribution to the thermal conductivity start dominating the phonon contribution (ca. $0.2 \text{ W m}^{-1}\text{K}^{-1}$ for the as-received Kapton).

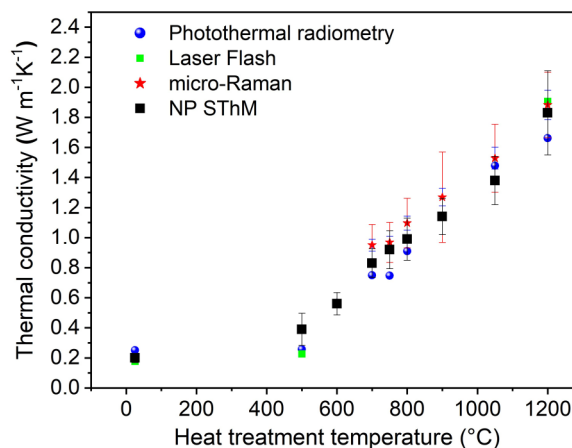


FIG. 5. Thermal conductivity of Kapton-derived carbon as a function of heat treatment temperature. Values obtained from photothermal radiometry, laser flash analysis, and micro-Raman analysis are taken from Ref. 10 for comparison.

02 January 2024 11:56:28

The advantage of SThM is its lateral resolution, which for micro-fabricated probes (KNT, used in this study) reaches 100 nm. It has been successfully applied by Li *et al.* to materials presenting multiple phase compositions.^{31,32} To estimate the thermal conductivity, Li *et al.* have relied upon finite elements modeling to circumvent the undesirable contribution of heat flow through the surrounding air and the probe cantilever. In our case, no modeling step is required, as the calibration step accounts for both the environment (conduction through the air and the cantilever) and tip geometry (thermal contact area). Gomès *et al.* have investigated the sensitivity of the SThM technique.³³ By correlating the relative Joule thermal power of the probe with the sample conductivity, they have estimated optimal sensitivity of SThM for values below tenths of $\text{W m}^{-1} \text{K}^{-1}$. Therefore, Kapton-derived carbonaceous materials in this study display thermal conductivity values, where the SThM sensitivity is optimal. In order to provide reliable estimation of thermal conductivity value, the sample topography must be taken into consideration.^{33–35} In this regard, carbonized Kapton has low surface roughness (outside of zones with nodules) suitable for consistent thermal contact area.

Graphitization of Kapton films results in gas evacuation at temperatures higher than 600 °C,⁸ which may be regarded as a possible reason for the formation of these nodules. Temperature-induced change in Kapton films has been investigated by Mamleyev *et al.*³⁶ where they demonstrated bubbling of the film surface which is followed by the release of carbon and nitrogen containing volatile species from these bubbles. Nysten *et al.*³⁷ have demonstrated the presence of bubbles of comparable sizes in partially graphitized Kapton by AFM. These nodules may produce pores linked to volatile species evacuation events during heat treatment, which also results in material swelling. It is well known that grain boundaries in porous materials contribute to phonon scattering and impede thermal transport,³⁸ which in the case of nodular regions is able to overcome the expected increase in thermal conductivity due to the chemical transformation of the polymer into the sp^2 carbon. The lower thermal conductivity on these nodules is thus consistent with the heterogeneous structure of these areas with grains and voids (air gap) as observed on SEM cross-sectional images (Fig. S8 in the [supplementary material](#)).

V. CONCLUSION

In summary, investigations of partially graphitized polyimide allow us to better understand the local heat-induced transformation of organic materials in inert atmosphere. In this work, we have demonstrated that the NP SThM is a powerful tool for investigating thermal properties of materials with low-to-moderate thermal conductivity. With a reliable calibration procedure, herein described, we have tested a series of samples for which the thermal conductivities span over one order of magnitude and found that the measured values are in excellent agreement with the three other techniques: photo-thermal radiometry, flash laser analysis, and micro-Raman thermometry.

We have also demonstrated that this technique is able to reveal the presence of heterogeneous surface structures in materials by probing local thermal conductivity in polyimide with incomplete graphitization degree. For materials heated at 1200 °C (bulk

$\kappa = 1.83 \pm 0.29 \text{ W m}^{-1} \text{K}^{-1}$), we have found regions which present lower thermal conductivity ($\kappa = 0.45 \pm 0.05 \text{ W m}^{-1} \text{K}^{-1}$), which may be attributed to the presence of pores resulting from the escape of volatile species at high temperatures. The NP SThM has demonstrated its potential to differentiate surface changes with good spatial resolution.

SUPPLEMENTARY MATERIAL

See the [supplementary material](#) for tapping mode AFM images of the samples with derived RMS roughness, NP SThM data for calibration standards, and Kapton-derived carbon samples and a SEM cross-sectional image of a sample treated at 1200 °C.

ACKNOWLEDGMENTS

The authors acknowledge financial support of the French National Research Agency (ANR), project HARVESTERS (No. ANR-16-CE05-0029). The IEMN facilities are partly supported by Renatech. We acknowledge D. Deresmes for his valuable help with the SThM instrument.

AUTHOR DECLARATIONS

Conflict of Interest

The authors have no conflicts to disclose.

DATA AVAILABILITY

The data that support the findings of this study are available from the corresponding author upon reasonable request.

REFERENCES

- 1 A. W. Topol, D. C. La Tulipe, L. Shi, D. J. Frank, K. Bernstein, S. E. Steen, A. Kumar, G. U. Singco, A. M. Young, K. W. Guarini, and M. Jeong, *IBM J. Res. Dev.* **50**, 491–506 (2006).
- 2 A. A. Balandin, *Nat. Mater.* **10**, 569–581 (2011).
- 3 Z. Han and A. Fina, *Prog. Polym. Sci.* **36**, 914–944 (2011).
- 4 P. Lv, X.-W. Tan, K.-H. Yu, R.-L. Zheng, J.-J. Zheng, and W. Wei, *Carbon* **99**, 222–228 (2016).
- 5 M. Inagaki, F. Kang, M. Toyoda, and H. Konno, *Adv. Mater. Sci. Eng. Carbon* **2**, 363–386 (2014).
- 6 Y. Hishiyama, K. Igarashi, I. Kanaoka, H. Fujii, T. Kaneda, T. Koidesawa, Y. Shimazawa, and A. Yoshida, *Carbon* **35**, 657–668 (1997).
- 7 M. Inagaki, S. Harada, T. Sato, T. Nakajima, Y. Horino, and K. Morita, *Carbon* **27**, 253–257 (1989).
- 8 S. Venkatachalam, D. Bertin, G. Ducournau, J. F. Lampin, and D. Hourlier, *Carbon* **100**, 158–164 (2016).
- 9 M. Inagaki, N. Ohta, and Y. Hishiyama, *Carbon* **61**, 1–21 (2013).
- 10 S. Venkatachalam, M. Depriester, A. H. Sahrroui, B. Capoen, M. R. Ammar, and D. Hourlier, *Carbon* **114**, 134–140 (2017).
- 11 M. N. Gueye, A. Vercouter, R. Jouclas, D. Guérin, V. Lemaury, G. Schweicher, S. Lenfant, A. Antidormi, Y. Geerts, C. Melis, J. Cornil, and D. Vuillaume, *Nanoscale* **13**, 3800–3807 (2021).
- 12 D. Trefon-Radziejewska, J. Juszczak, A. Fleming, N. Horny, J. S. Antoniow, M. Chirtoc, A. Kazmierczak-Balata, and J. Bodzenta, *Synth. Met.* **232**, 72–78 (2017).
- 13 Y. Zhang, C. Zhang, D. Wei, X. Bai, and X. Xu, *CrystEngComm* **21**, 5402–5409 (2019).
- 14 W. Chen, Y. Feng, L. Qiu, and X. Zhang, *Int. J. Heat Mass Transf.* **154**, 119750 (2020).

- ¹⁵M. Tortello, I. Pasternak, K. Zeranska-Chudek, W. Strupinski, R. S. Gonnelli, and A. Fina, *ACS Appl. Nano Mater.* **2**, 2621–2633 (2019).
- ¹⁶F. Könemann, M. Vollmann, T. Wagner, N. Mohd Ghazali, T. Yamaguchi, A. Stemmer, K. Ishibashi, and B. Gotsmann, *J. Phys. Chem. C* **123**, 12460–12465 (2019).
- ¹⁷T. Meier, F. Menges, P. Nirmalraj, H. Hölscher, H. Riel, and B. Gotsmann, *Phys. Rev. Lett.* **113**, 060801 (2014).
- ¹⁸N. Mosso, H. Sadeghi, A. Gemma, S. Sangtarash, U. Drechsler, C. Lambert, and B. Gotsmann, *Nano Lett.* **19**, 7614–7622 (2019).
- ¹⁹L. Cui, S. Hur, Z. A. Akbar, J. C. Klöckner, W. Jeong, F. Pauly, S.-Y. Jang, P. Reddy, and E. Meyhofer, *Nature* **572**, 628–633 (2019).
- ²⁰P. Gehring, J. K. Sowa, C. Hsu, J. de Bruijckere, M. van der Star, J. J. Le Roy, L. Bogani, E. M. Gauger, and H. S. J. van der Zant, *Nat. Nanotechnol.* **16**, 426–430 (2021).
- ²¹Y. Zhang, W. Zhu, F. Hui, M. Lanza, T. Borca-Tasciuc, and M. Muñoz Rojo, *Adv. Funct. Mater.* **30**, 1900892 (2020).
- ²²C. Dames, *Annu. Rev. Heat Transfer* **16**, 7–49 (2013).
- ²³L. Qiu, Y. Ouyang, Y. Feng, and X. Zhang, *Rev. Sci. Instrum.* **89**, 096112 (2018).
- ²⁴M. Ruoho, K. Valslet, T. Finstad, and I. Tittonen, *Nanotechnology* **26**, 195706 (2015).
- ²⁵J. Liu, J. Zhu, M. Tian, X. Gu, A. Schmidt, and R. Yang, *Rev. Sci. Instrum.* **84**, 034902 (2013).
- ²⁶J. Liu, X. Wang, D. Li, N. E. Coates, R. A. Segalman, and D. G. Cahill, *Macromolecules* **48**, 585–591 (2015).
- ²⁷S. Gomès, A. Assy, and P.-O. Chapuis, *Phys. Status Solidi (A)* **212**, 477–494 (2015).
- ²⁸K. Kim, J. Chung, G. Hwang, O. Kwon, and J. S. Lee, *ACS Nano* **5**, 8700–8709 (2011).
- ²⁹J. Juszczyk, A. Kaźmierczak-Bałata, P. Firek, and J. Bodzenta, *Ultramicroscopy* **175**, 81–86 (2017).
- ³⁰B. McEnaney, *Phys. Technol.* **5**, 5–7 (1974).
- ³¹E. N. Esfahani, F. Ma, S. Wang, Y. Ou, J. Yang, and J. Li, *Natl. Sci. Rev.* **5**, 59–69 (2018).
- ³²Q. Zhu, J. Liu, Y. Lin, S. Xie, and J. Li, *Appl. Phys. Lett.* **117**, 133102 (2020).
- ³³S. Gomès, L. David, V. Lysenko, A. Descamps, T. Nychyporuk, and M. Raynaud, *J. Phys. D: Appl. Phys.* **40**, 6677–6683 (2007).
- ³⁴G. Józwiak, G. Wielgoszewski, T. Gotszalk, and L. Kepiński, *Ultramicroscopy* **133**, 80–87 (2013).
- ³⁵J. Bodzenta, A. Kaźmierczak-Bałata, and K. Harris, *J. Appl. Phys.* **127**, 031103 (2020).
- ³⁶E. R. Mamleyev, S. Heissler, A. Nefedov, P. G. Weidler, N. Nordin, V. V. Kudryashov, K. Länge, N. MacKinnon, and S. Sharma, *Flex Electron.* **3**, 2 (2019).
- ³⁷B. Nysten, J.-C. Roux, S. Flandrois, C. Daulan, and H. Saadaoui, *Phys. Rev. B* **48**, 12527–12538 (1993).
- ³⁸D. S. Smith, A. Alzina, J. Bourret, B. Nait-Ali, F. Pennec, N. Tessier-Doyen, K. Otsu, H. Matsubara, P. Elser, and U. T. Gonzenbach, *J. Mater. Res.* **28**, 2260–2272 (2013).